

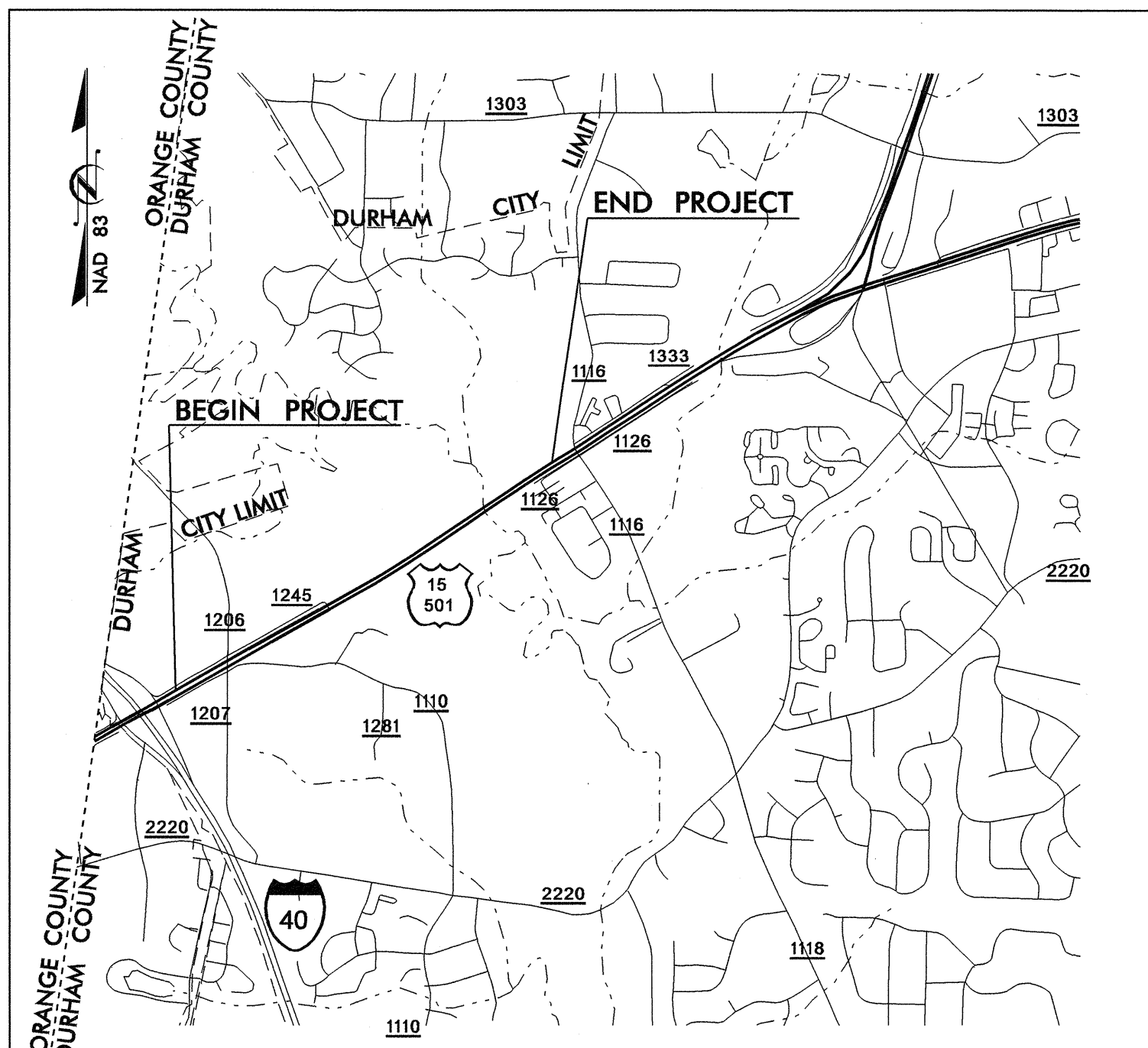
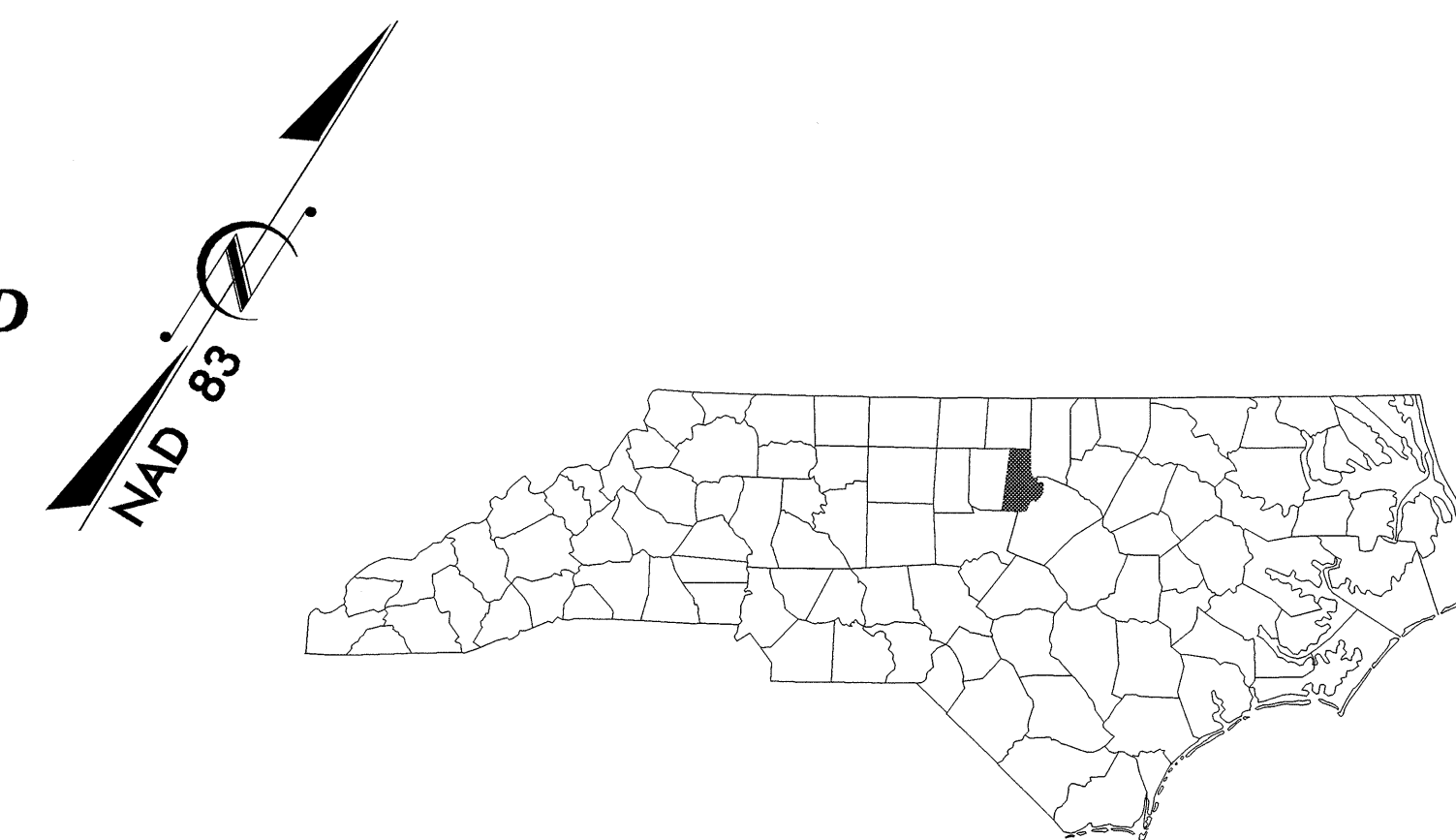
STATE OF NORTH CAROLINA
DIVISION OF HIGHWAYS

T.I.P. NO.	SHEET NO.
U-4012	UO-1

DURHAM COUNTY

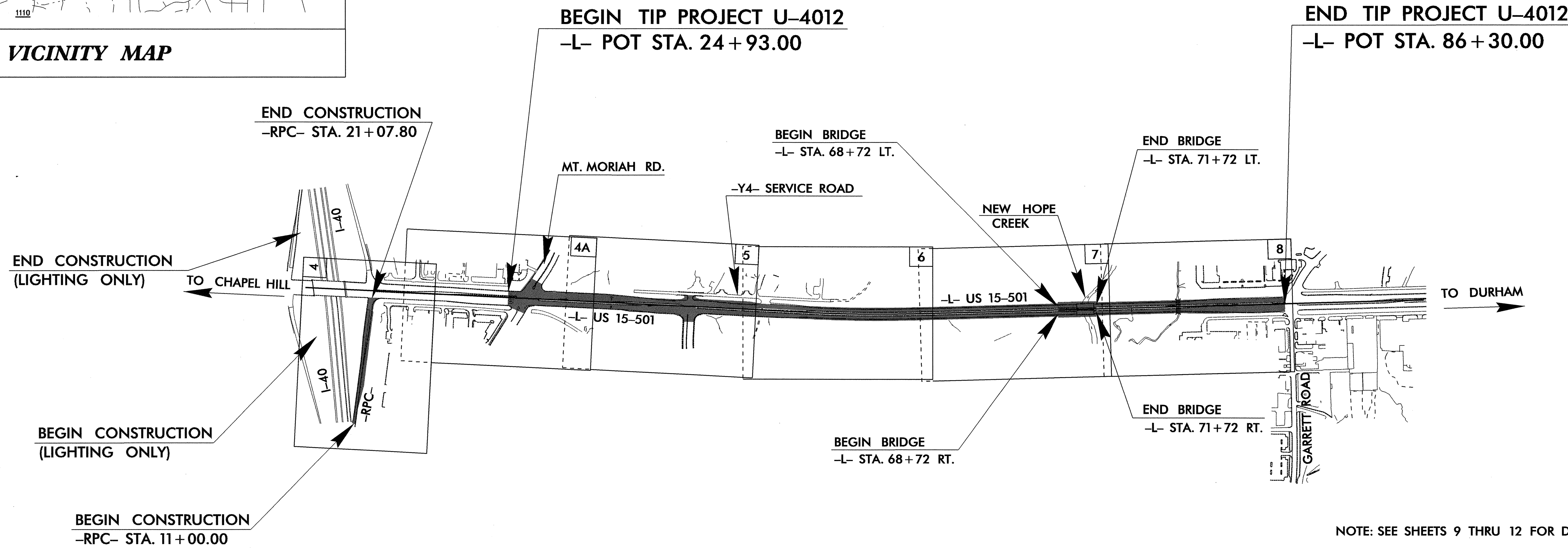
LOCATION: US 15-501 FROM NORTH OF MT MORIAH ROAD
TO SOUTH OF GARRETT ROAD

TYPE OF WORK: UTILITIES



VICINITY MAP

TIP: U-4012



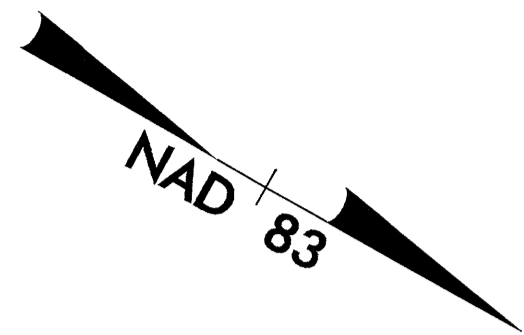
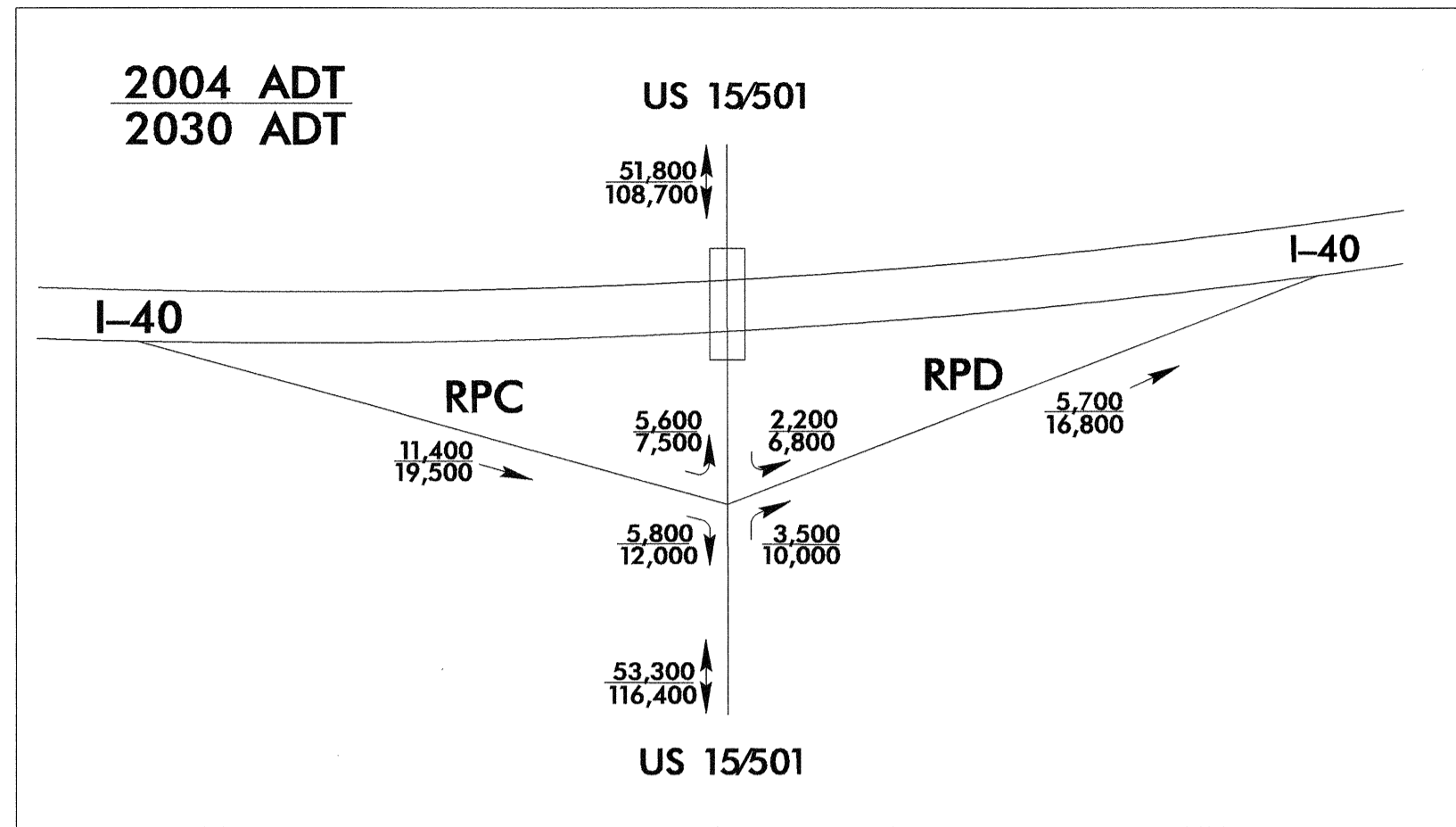
NOTE: SEE SHEETS 9 THRU 12 FOR DETOURS

INDEX OF SHEETS	
SHEET NO.	DESCRIPTION
UO-1	TITLE SHEET
UO-2 TO UO-6	UTILITIES BY OTHERS PLAN SHEETS

UTILITIES BY OTHERS ON PROJECT
(1) PROGRESS TELECOM
(2) DUKE POWER (TRANSMISSION)
(3) DUKE POWER (DISTRIBUTION)

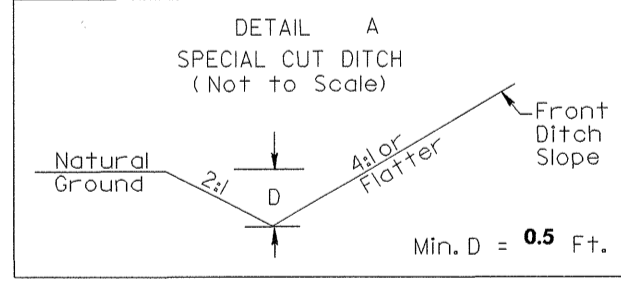
UTILITIES BY OTHERS

NOTE:
ALL PROPOSED UTILITY WORK SHOWN ON THIS SHEET WILL BE DONE BY OTHERS



END CONSTRUCTION
-RPC- STA. 21 + 07.80

BEGIN CONSTRUCTION
-RPC- STA. 11 + 00.00



RPC STA 13+50 TO 17+15 RT

★ **UPGRADE EXISTING TRAFFIC SIGNAL**

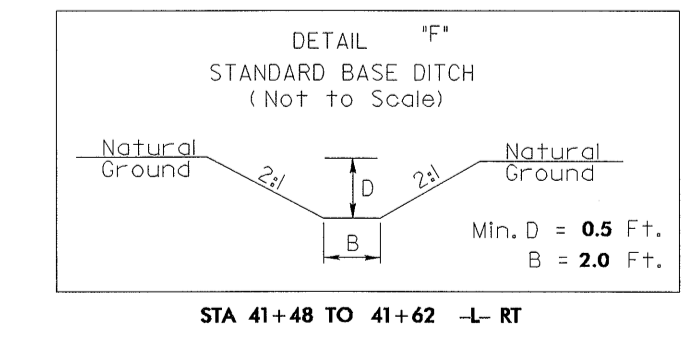
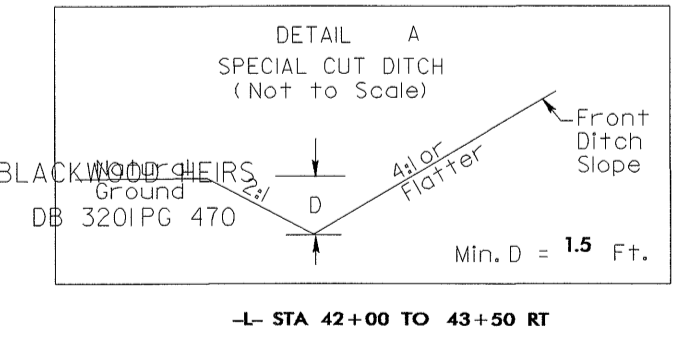
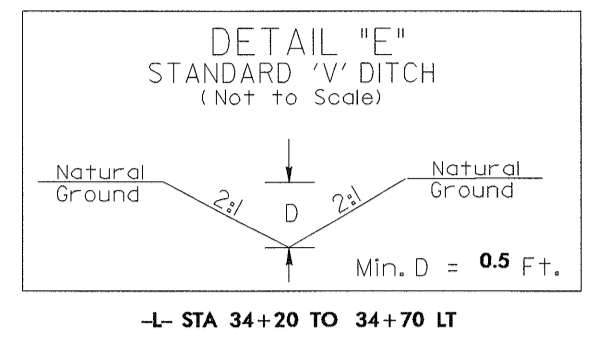
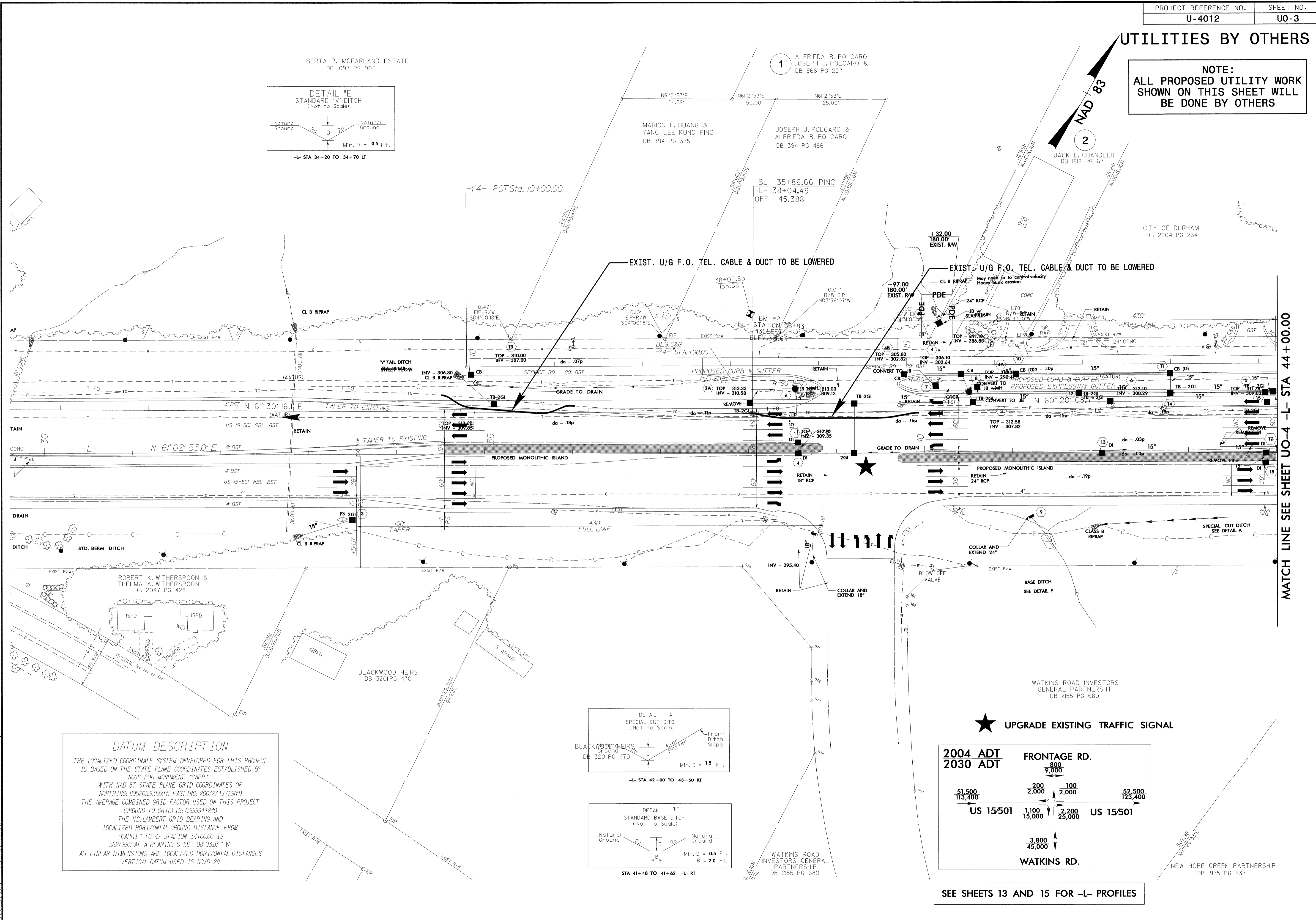
SEE SHEET 18 FOR -RPC- PROFILE

04-JAN-2005 16:55 U:\Projects\4012s4-U02.ut.psh.dgn
 R:\Utilities\4012s4-U02\Drawings\4012s4-U02.dwg
 8/17/99
 doug.leuner AT

UTILITIES BY OTHERS

NOTE:
ALL PROPOSED UTILITY WORK
SHOWN ON THIS SHEET WILL
BE DONE BY OTHERS

8/17/99
 REVISIONS
 05-JAN-2005 07:06 Pr: [unclear] 4/01/2s5_UO3_ut_psh.dgn
 Pr: [unclear] 4/01/2s5_UO3_ut_psh.dgn
 Pr: [unclear] 4/01/2s5_UO3_ut_psh.dgn
 Pr: [unclear] 4/01/2s5_UO3_ut_psh.dgn



DATUM DESCRIPTION

THE LOCALIZED COORDINATE SYSTEM DEVELOPED FOR THIS PROJECT IS BASED ON THE STATE PLANE COORDINATES ESTABLISHED BY NCGS FOR MONUMENT "CAPRI"

WITH NAD 83 STATE PLANE GRID COORDINATES OF
NORTHING: 8052059355(11) EASTING: 20072717728(11)

THE AVERAGE COMBINED GRID FACTOR USED ON THIS PROJECT (GROUND TO GRID) IS: 0.999941240

THE N.C. LAMBERT GRID BEARING AND LOCALIZED HORIZONTAL GROUND DISTANCE FROM "CAPRI" TO -L- STATION 34+00.00 IS
5827.995' AT A BEARING S 58° 08' 03.87" W

ALL LINEAR DIMENSIONS ARE LOCALIZED HORIZONTAL DISTANCES
VERTICAL DATUM USED IS NGVD 29

★ UPGRADE EXISTING TRAFFIC SIGNAL

2004 ADT		FRONTAGE RD.	
51,500	113,400	200	100
		2,000	2,000
		800	
		9,000	
		1,100	2,200
		15,000	25,000
		3,800	
		45,000	
		WATKINS RD.	

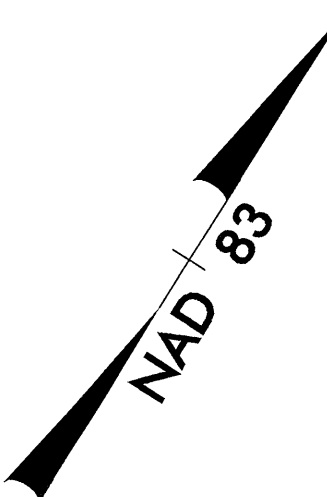
US 15/501 US 15/501

SEE SHEETS 13 AND 15 FOR -L- PROFILES

MATCH LINE SEE SHEET UO-4 -L- STA 44+00.00

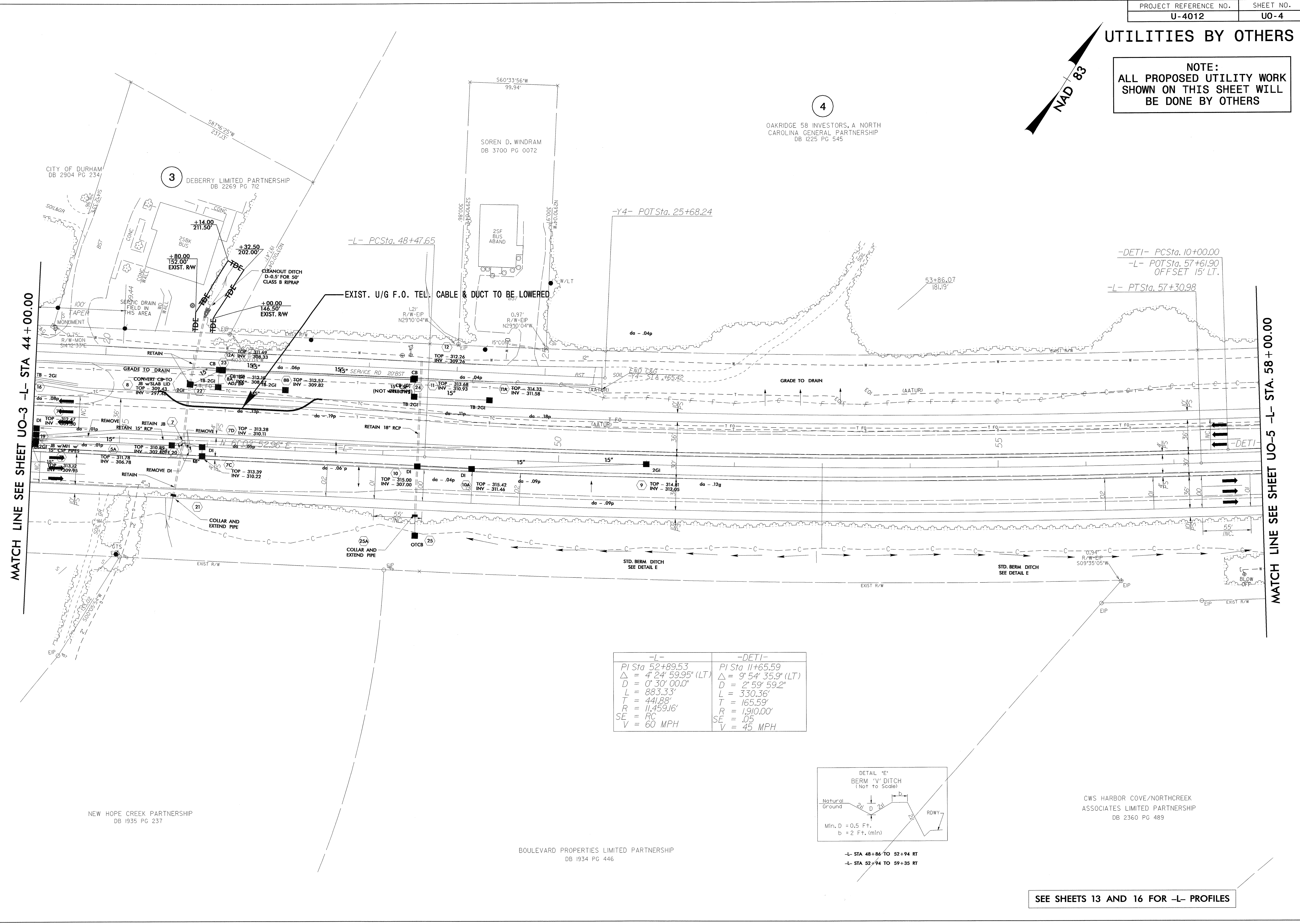
UTILITIES BY OTHERS

NOTE:
ALL PROPOSED UTILITY WORK
SHOWN ON THIS SHEET WILL
BE DONE BY OTHERS



8/17/99

05-JAN-2005 07:07
R:\Utilities\RD\UO-4\4012s6_UO4_ut_psh.dwg
dwg:psjmer RT_DS214553

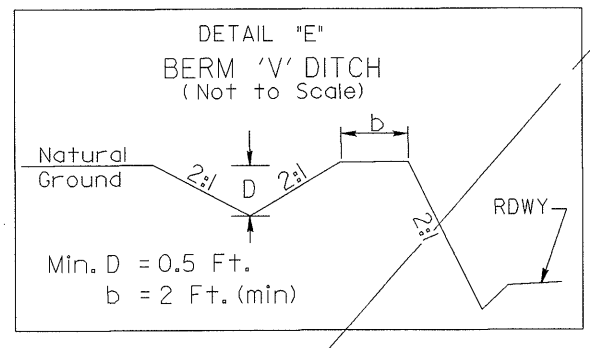


REVISIONS

MATCH LINE SEE SHEET UO-3 -L- STA 44 + 00.00

MATCH LINE SEE SHEET UO-5 -L- STA. 58 + 00.00

-L-	-DETI-
PI Sta 52+89.53	PI Sta 11+65.59
$\Delta = 4' 24' 59.95''$ (LT)	$\Delta = 9' 54' 35.9''$ (LT)
D = 0' 30' 00.0"	D = 2' 59' 59.2"
L = 883.33'	L = 330.36'
T = 441.88'	T = 165.59'
R = 11,459.16'	R = 1,910.00'
SE = RC	SE = .05
V = 60 MPH	V = 45 MPH



-L- STA 48+86 TO 52+94 RT
-L- STA 52+94 TO 59+35 RT

CWS HARBOR COVE/NORTH CREEK
ASSOCIATES LIMITED PARTNERSHIP
DB 2360 PG 489

SEE SHEETS 13 AND 16 FOR -L- PROFILES

UTILITIES BY OTHERS

NOTE:
ALL PROPOSED UTILITY WORK
SHOWN ON THIS SHEET WILL
BE DONE BY OTHERS

-DETI-	
PI Sta 11+65.59	PI Sta 14+95.95
$\Delta = 9^{\circ} 54' 35.9" (LT)$	$\Delta = 9^{\circ} 54' 35.9" (RT)$
$D = 2^{\circ} 59' 59.2"$	$D = 2^{\circ} 59' 59.2"$
$L = 330.36'$	$L = 330.36'$
$T = 165.59'$	$T = 165.59'$
$R = 1,910.00'$	$R = 1,910.00'$
$SE = .05$	$SE = .05$
$V = 45 \text{ MPH}$	$V = 45 \text{ MPH}$

PROP. RELOCATION OF 100 KV TRANSMISSION LINE

NAD 83

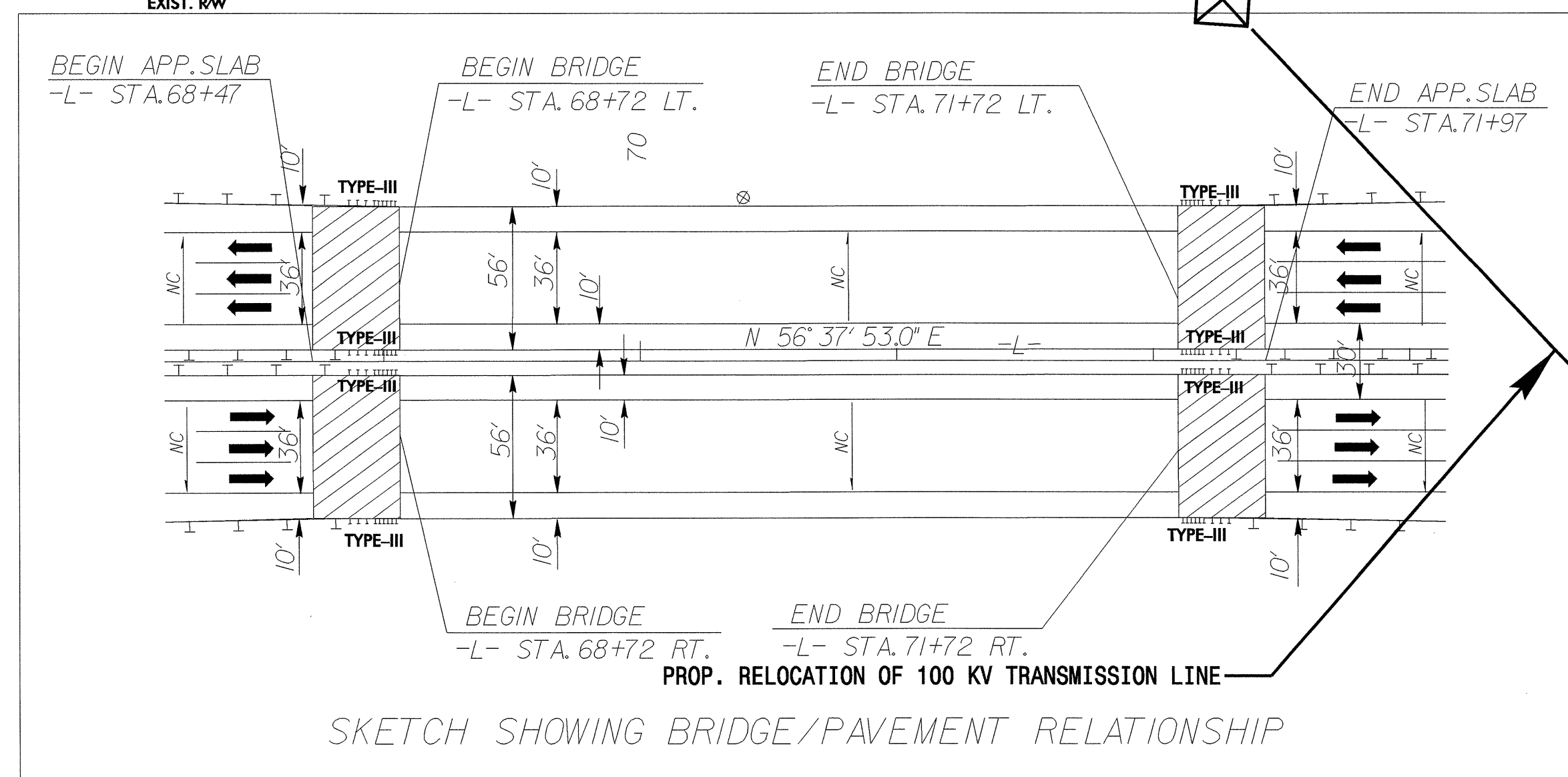
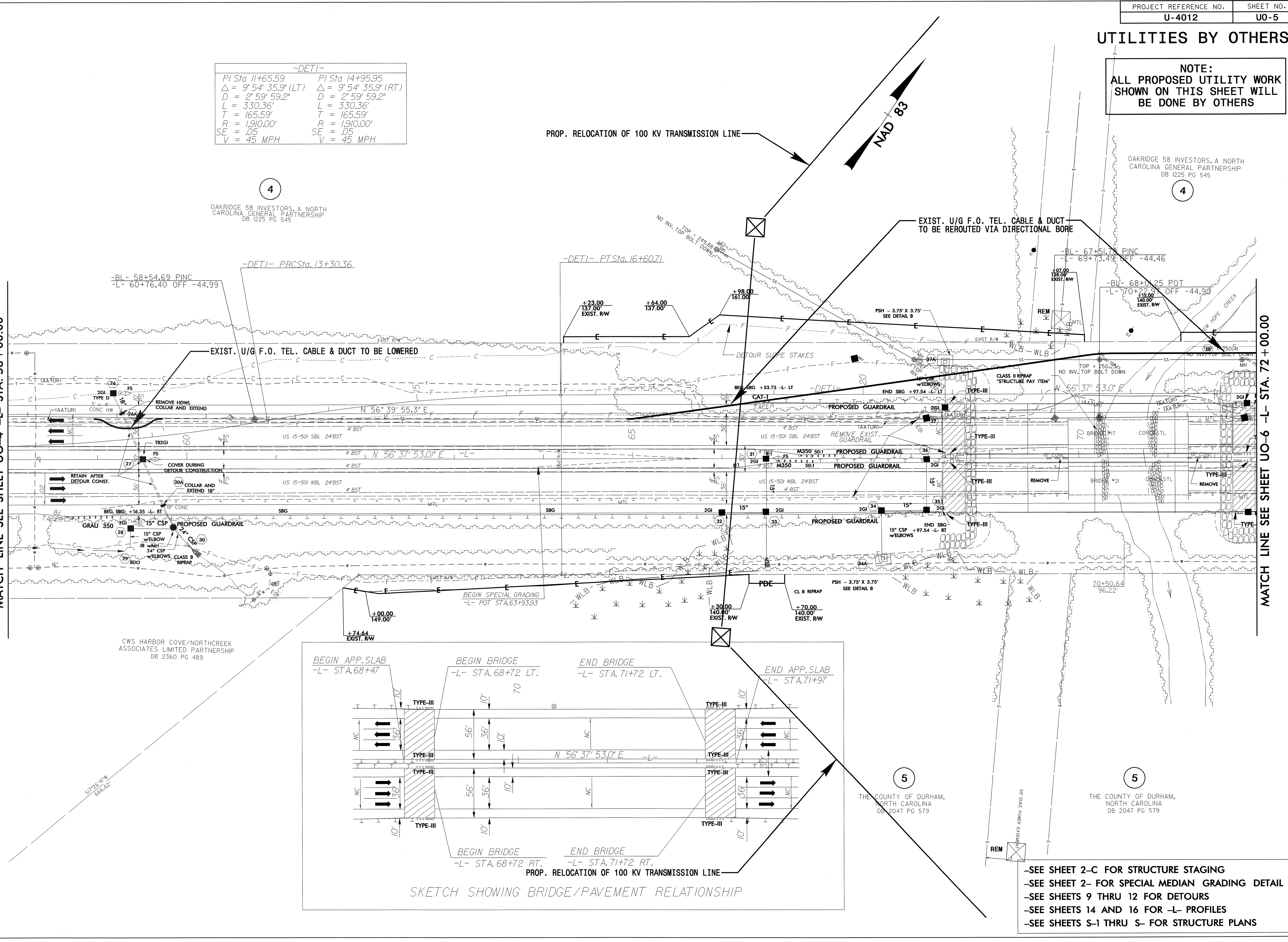
OAKRIDGE 58 INVESTORS, A NORTH CAROLINA GENERAL PARTNERSHIP DB 1225 PG 545

OAKRIDGE 58 INVESTORS, A NORTH CAROLINA GENERAL PARTNERSHIP DB 1225 PG 545

MATCH LINE SEE SHEET UO-4 -L- STA. 58+00.00

MATCH LINE SEE SHEET UO-6 -L- STA. 72+00.00

8/17/99
REVISIONS
04-JAN-2005 16:49 R:\Utilities\Fig\U-4012\7_U05.ut.psh.dwg
05214853 doug.joyner



- SEE SHEET 2-C FOR STRUCTURE STAGING
- SEE SHEET 2- FOR SPECIAL MEDIAN GRADING DETAIL
- SEE SHEETS 9 THRU 12 FOR DETOURS
- SEE SHEETS 14 AND 16 FOR -L- PROFILES
- SEE SHEETS S-1 THRU S- FOR STRUCTURE PLANS

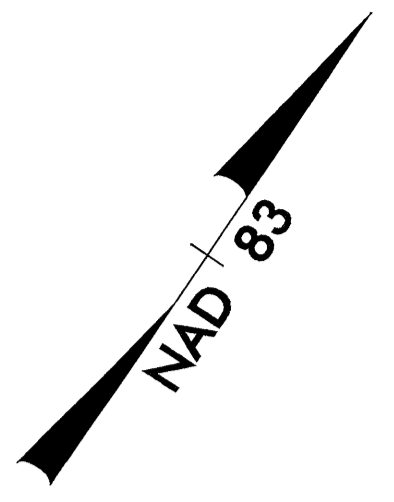
THE COUNTY OF DURHAM, NORTH CAROLINA DB 2047 PG 579

THE COUNTY OF DURHAM, NORTH CAROLINA DB 2047 PG 579

CWS HARBOR COVE/NORTHCREEK ASSOCIATES LIMITED PARTNERSHIP DB 2360 PG 489

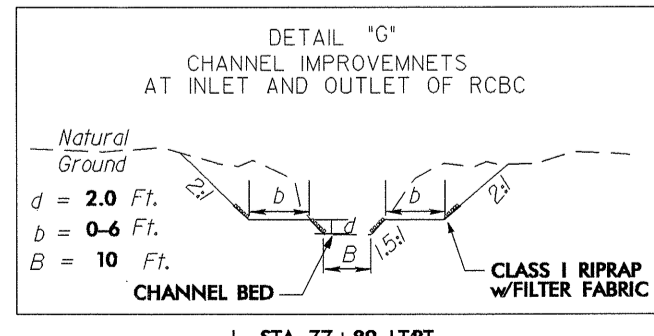
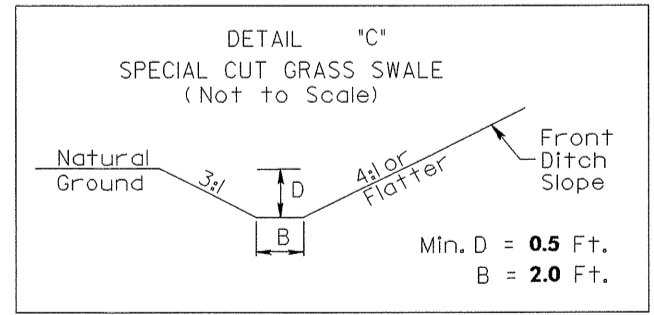
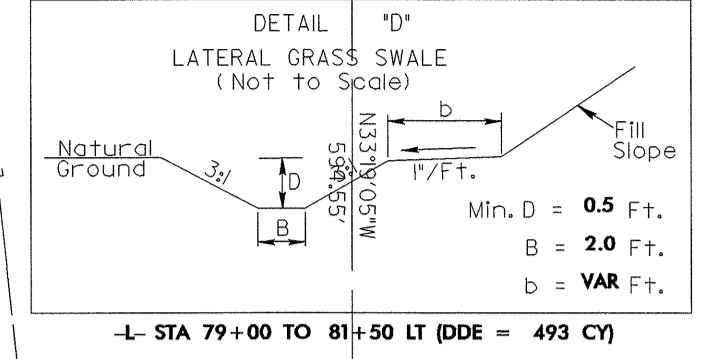
UTILITIES BY OTHERS

NOTE:
ALL PROPOSED UTILITY WORK
SHOWN ON THIS SHEET WILL
BE DONE BY OTHERS



-DETI-

PI Sta 28+03.25	PI Sta 31+33.61
$\Delta = 9' 54' 35.9" (RT)$	$\Delta = 9' 54' 35.9" (LT)$
$D = 2' 59' 59.2"$	$D = 2' 59' 59.2"$
$L = 330.36'$	$L = 330.36'$
$T = 165.59'$	$T = 165.59'$
$R = 1,910.00'$	$R = 1,910.00'$
$SE = .05$	$SE = .05$
$V = 45 \text{ MPH}$	$V = 45 \text{ MPH}$

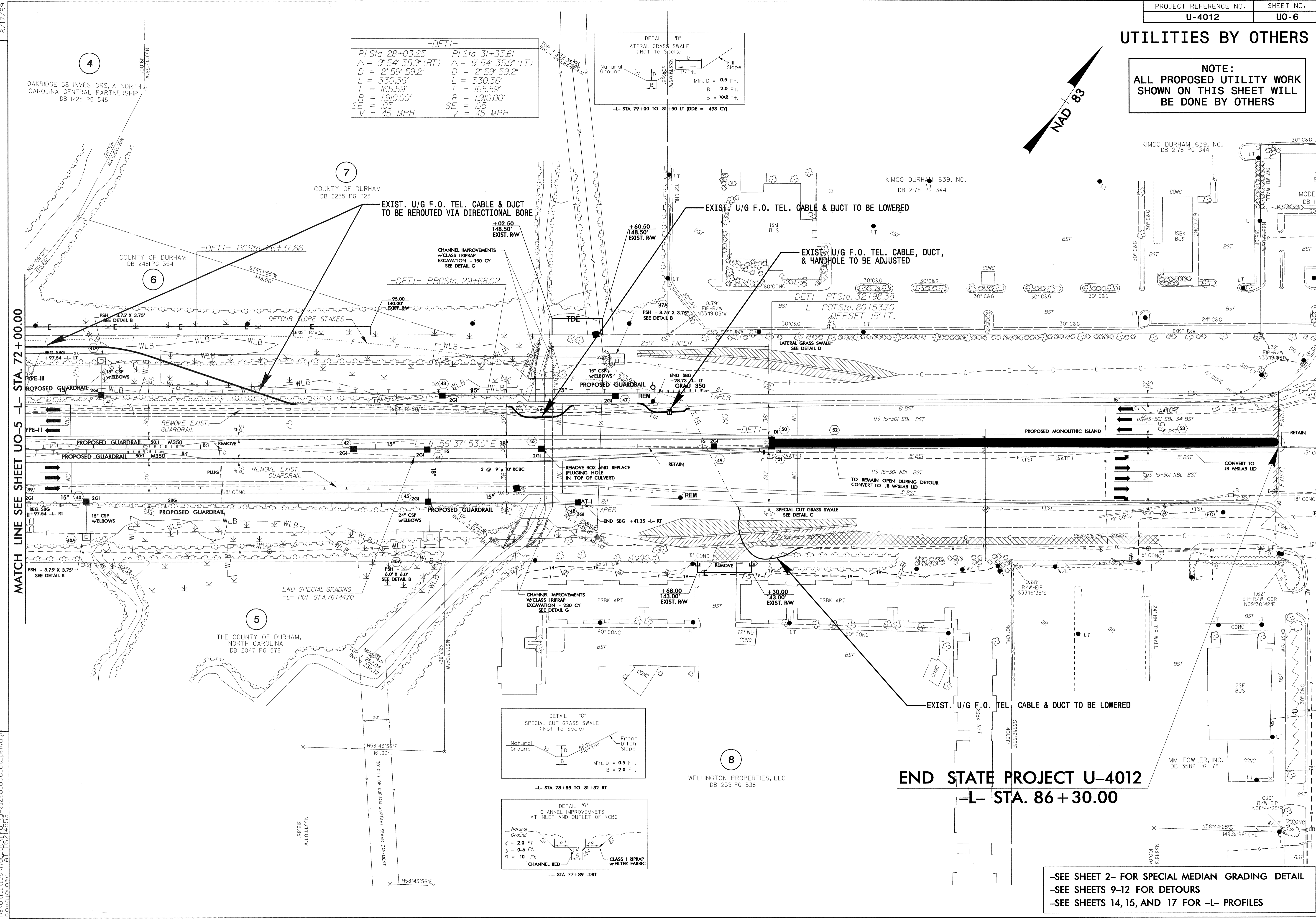


8/17/99

04-JAN-2005 16:50
R:\Utilities\Proj\U-4012\8_UO6_u.t-psh.dgn
doug.louder AT DS214553

MATCH LINE SEE SHEET UO-5 -L- STA. 72+00.00

REVISIONS



END STATE PROJECT U-4012

-L- STA. 86 + 30.00

-SEE SHEET 2- FOR SPECIAL MEDIAN GRADING DETAIL
-SEE SHEETS 9-12 FOR DETOURS
-SEE SHEETS 14, 15, AND 17 FOR -L- PROFILES