

STATE OF NORTH CAROLINA  
DIVISION OF HIGHWAYS

STATE PROJECT REFERENCE NO.	SHEET NO.
B-3446	TCP-1

**PLAN FOR PROPOSED  
TRAFFIC CONTROL, MARKING & DELINEATION  
DAVIDSON COUNTY**

B-3446

**ROADWAY STANDARD DRAWINGS**

THE FOLLOWING ROADWAY STANDARDS AS APPEAR IN "ROADWAY STANDARD DRAWINGS" - PROJECT SERVICES UNIT-N.C. DEPARTMENT OF TRANSPORTATION-RALEIGH, N.C., DATED JULY 2006 ARE APPLICABLE TO THIS PROJECT AND BY REFERENCE HEREBY ARE CONSIDERED A PART OF THESE PLANS:

STD. NO.	TITLE
1101.02	TEMPORARY LANE CLOSURES
1101.03	TEMPORARY ROAD CLOSURES
1101.04	TEMPORARY SHOULDER CLOSURES
1101.05	WORK ZONE VEHICLE ACCESSES
1101.11	TRAFFIC CONTROL DESIGN TABLES
1110.01	STATIONARY WORK ZONE SIGNS
1110.02	PORTABLE WORK ZONE SIGNS
1115.01	FLASHING ARROW PANELS
1130.01	DRUM
1135.01	CONES
1145.01	BARRICADES
1150.01	FLAGGING DEVICES
1160.01	TEMPORARY CRASH CUSHION
1180.01	SKINNY-DRUM
1205.01	PAVEMENT MARKINGS - LINE TYPES & OFFSETS
1205.02	PAVEMENT MARKINGS - 2 LANE & MULTILANE ROADWAYS
1205.04	PAVEMENT MARKINGS - INTERSECTIONS
1205.05	PAVEMENT MARKINGS - TURN LANES
1205.07	PAVEMENT MARKINGS - PEDESTRIAN CROSSWALKS
1205.08	PAVEMENT MARKINGS - SYMBOLS & WORD MESSAGES
1205.12	PAVEMENT MARKINGS - BRIDGES
1250.01	PAVEMENT MARKER SPACING
1251.01	RAISED PAVEMENT MARKERS (TEMPORARY & PERMANENT)
1253.01	SNOWPLOWABLE RAISED PAVEMENT MARKERS
1261.01	GUARDRAIL & BARRIER DELINEATOR SPACING
1261.02	GUARDRAIL & BARRIER DELINEATOR TYPES
1262.01	GUARDRAIL END DELINEATION

**INDEX OF SHEETS**

SHEET NO.	TITLE
TCP-1	LIST OF APPLICABLE ROADWAY STANDARD DRAWINGS, LEGEND AND INDEX OF SHEETS
TCP-2	PROJECT NOTES
TCP-3	PHASING AND TEMPORARY PAVEMENT MARKING SCHEDULE
TCP-4	DETAIL 1
TCP-5	DETAIL 2
TCP-6	DETOUR MAP AND SIGNING
TCP-7	SIGN DESIGN
TCP-8	DETAIL DRAWING FOR TWO-WAY UNDIVIDED AND URBAN FREEWAYS ADVANCED WORK ZONE WARNING SIGNS
PM-1	FINAL PAVEMENT MARKING PLAN AND FINAL PAVEMENT MARKING SCHEDULE

**LEGEND**

- GENERAL**
- DIRECTION OF TRAFFIC FLOW
  - NORTH ARROW
  - PROPOSED PVMT.    EXIST. PVMT.
  - WORK AREA
  - REMOVAL OF EXISTING PAVEMENT
- TRAFFIC CONTROL DEVICES**
- TYPE I BARRICADE
  - TYPE II BARRICADE
  - TYPE III BARRICADE
  - CONE
  - DRUM    SKINNY DRUM
  - FLASHING ARROW PANEL (TYPE C)
  - STATIONARY SIGN
  - PORTABLE SIGN
  - STATIONARY OR PORTABLE SIGN
  - WARNING FLAGS
  - CRASH CUSHION
  - CHANGEABLE MESSAGE SIGN
  - TRUCK MOUNTED IMPACT ATTENUATOR (TMIA)
  - POLICE
  - FLAGGER
- PAVEMENT MARKINGS**
- CRYSTAL/CRYSTAL PAVEMENT MARKER
  - YELLOW/YELLOW PAVEMENT MARKER
  - CRYSTAL/RED PAVEMENT MARKER
  - PAVEMENT MARKING SYMBOLS

TIP PROJECT:

08-MAY-2007 10:52  
\\dot\dfsroot\0\pr-oj\tipproj\projects-b\3446\tr affic\trafficocontrol\tcp-b-3446-tc-top-1.dgn  
wdakduk AT WZTC22465

APPROVED: _____ DATE: _____	PLAN PREPARED BY: N.C.D.O.T. WORK ZONE TRAFFIC CONTROL UNIT
	J. S. BOURNE, PE <u>TRAFFIC CONTROL ENGINEER</u>
	JOSEPH ISHAK, PE <u>TRAFFIC CONTROL PROJECT ENGINEER</u>
	HABIB A. LAWANDOS <u>TRAFFIC CONTROL PROJECT DESIGN ENGINEER</u>
	WALID R. DAKDUK <u>TRAFFIC CONTROL DESIGN ENGINEER</u>

# PROJECT NOTES

ADAPT THE TRAFFIC CONTROL PLANS, WHEN DIRECTED BY THE ENGINEER, TO MEET FIELD CONDITIONS TO PROVIDE SAFE AND EFFICIENT TRAFFIC MOVEMENT. CHANGES MAY BE REQUIRED WHEN PHYSICAL DIMENSIONS IN THE DETAIL DRAWINGS, STANDARD DETAILS AND ROADWAY DETAILS ARE NOT ATTAINABLE, OR RESULT IN DUPLICATE, OR UNDESIRED OVERLAPPING OF DEVICES. MODIFICATION MAY INCLUDE: MOVING, SUPPLEMENTING, COVERING OR REMOVAL OF DEVICES.

THE FOLLOWING GENERAL NOTES APPLY AT ALL FOR THE DURATION OF THE CONSTRUCTION PROJECT, EXCEPT WHEN OTHERWISE NOTED IN THE PLAN, OR DIRECTED BY THE ENGINEER.

### TIME RESTRICTIONS

- A) DO NOT CLOSE OR NARROW TRAVEL LANES DURING THE DAY OF THE BBQ FESTIVAL AS FOLLOW:

ROAD NAME	DAY AND TIME RESTRICTIONS
-L- (E. CENTER ST)	OCTOBER 27th, 2007
-Y3-	FROM 6:00AM TO 12:00AM (MIDNIGHT)
-Y5-	AND
-Y6-	OCTOBER 25th, 2008
	FROM 6:00AM TO 12:00AM (MIDNIGHT)

- B) DO NOT CONDUCT ANY HAULING OPERATIONS AGAINST THE FLOW OF TRAFFIC OF AN OPEN TRAVELWAY UNLESS THE WORK AREA IS PROTECTED BY BARRIERS OR GUARDRAIL OR OTHERWISE DIRECTED BY THE ENGINEER.

### LANE AND SHOULDER CLOSURE REQUIREMENTS

- C) REMOVE LANE CLOSURE DEVICES FROM THE LANE WHEN WORK IS NOT BEING PERFORMED BEHIND THE LANE CLOSURE OR WHEN A LANE CLOSURE IS NO LONGER NEEDED, OR AS DIRECTED BY THE ENGINEER.
- D) WHEN PERSONNEL AND/OR EQUIPMENT ARE WORKING WITHIN A LANE OF TRAVEL OF AN UNDIVIDED OR DIVIDED FACILITY, CLOSE THE LANE ACCORDING TO THE TRAFFIC CONTROL PLANS, ROADWAY STANDARD DRAWINGS OR AS DIRECTED BY THE ENGINEER. CONDUCT THE WORK SO THAT ALL PERSONNEL AND/OR EQUIPMENT REMAIN WITHIN THE CLOSED TRAVEL LANE.
- E) WHEN PERSONNEL AND/OR EQUIPMENT ARE WORKING WITHIN A LANE OF TRAVEL OF AN UNDIVIDED OR DIVIDED FACILITY, CLOSE THE LANE ACCORDING TO THE TRAFFIC CONTROL PLANS, ROADWAY STANDARD DRAWINGS OR AS DIRECTED BY THE ENGINEER. CONDUCT THE WORK SO THAT ALL PERSONNEL AND/OR EQUIPMENT REMAIN WITHIN THE CLOSED TRAVEL LANE.
- F) DO NOT WORK SIMULTANEOUSLY, ON BOTH SIDES OF AN OPEN TRAVELWAY, WITHIN THE SAME LOCATION, ON A 2 LANE-2 WAY ROAD.
- G) DO NOT PERFORM WORK INVOLVING HEAVY EQUIPMENT WITHIN 15 FT OF THE EDGE OF TRAVELWAY WHEN WORK IS BEING PERFORMED BEHIND A LANE CLOSURE ON THE OPPOSITE SIDE OF THE TRAVELWAY.
- H) DO NOT INSTALL MORE THAN ONE LANE CLOSURE, IN ANY ONE DIRECTION, ON -L- (E. CENTER STREET).

### PAVEMENT EDGE DROP OFF REQUIREMENTS

- I) BACKFILL AT A 6:1 SLOPE UP TO THE EDGE AND ELEVATION OF EXISTING PAVEMENT IN AREAS ADJACENT TO AN OPENED TRAVEL LANE THAT HAS A DROP-OFF AS FOLLOWS:

BACKFILL DROP-OFFS THAT EXCEED 1.5 INCHES ON ROADWAYS WITH POSTED SPEED LIMITS OF 45 MPH OR GREATER.

BACKFILL DROP-OFFS THAT EXCEED 2 INCHES ON ROADWAYS WITH POSTED SPEED LIMITS LESS THAN 45 MPH.

BACKFILL WITH SUITABLE COMPACTED MATERIAL, AS APPROVED BY THE ENGINEER, AT NO EXPENSE TO THE DEPARTMENT.

- J) DO NOT EXCEED A DIFFERENCE OF 2.0 INCHES IN ELEVATION BETWEEN OPEN LANES OF TRAFFIC FOR NOMINAL LIFTS OF 1.5 INCHES. INSTALL ADVANCE WARNING "UNEVEN LANES" SIGNS (W8-11) 500 FT IN ADVANCE AND A MINIMUM OF ONCE EVERY MILE THROUGHOUT THE UNEVEN AREA.

### TRAFFIC PATTERN ALTERATIONS

- K) NOTIFY THE ENGINEER TWENTY ONE (21) CALENDAR DAYS PRIOR TO ANY TRAFFIC PATTERN ALTERATION.

### SIGNING

- L) INSTALL ADVANCE WORK ZONE WARNING SIGNS WHEN WORK IS WITHIN 100 FT FROM THE EDGE OF TRAVEL LANE AND NO MORE THAN THREE DAYS PRIOR TO THE BEGINNING OF CONSTRUCTION.

WHEN NO WORK IS BEING CONDUCTED FOR A PERIOD LONGER THAN ONE WEEK, REMOVE OR COVER ALL ADVANCE WORK ZONE WARNING SIGNS, AS DIRECTED BY THE ENGINEER, AT NO COST TO THE DEPARTMENT.

- M) PROVIDE PERMANENT SIGNING.
- N) PROVIDE DETOUR SIGNING WITHIN AND OFF THE PROJECT LIMITS.
- O) COVER OR REMOVE ALL DETOUR SIGNS WITHIN AND OFF THE PROJECT LIMITS WHEN A DETOUR IS NOT IN OPERATION.
- P) ENSURE ALL NECESSARY SIGNING IS IN PLACE PRIOR TO ALTERING ANY TRAFFIC PATTERN.

### TRAFFIC CONTROL DEVICES

- Q) SPACE CHANNELIZING DEVICES IN WORK AREAS NO GREATER THAN TWICE THE POSTED SPEED LIMIT, EXCEPT 10 FT ON-CENTER IN RADII, AND 3 FT OFF THE EDGE OF AN OPEN TRAVELWAY, WHEN LANE CLOSURES ARE NOT IN EFFECT.
- R) PLACE TYPE III BARRICADES, WITH "ROAD CLOSED" SIGN R11-2 AND "DETOUR" SIGN M4-10L AND M4-10R ATTACHED, OF SUFFICIENT LENGTH TO CLOSE ENTIRE ROADWAY. STAGGER OVERLAP BARRICADES TO ALLOW FOR INGRESS OR EGRESS.
- S) PLACE SETS OF THREE DRUMS PERPENDICULAR TO THE EDGE OF THE TRAVELWAY ON 500 FT CENTERS WHEN UNOPENED LANES ARE CLOSED TO TRAFFIC. THESE DRUMS SHALL BE IN ADDITION TO CHANNELIZING DEVICES.

### PAVEMENT MARKINGS AND MARKERS

- T) INSTALL PAVEMENT MARKINGS AND PAVEMENT MARKERS ON THE FINAL SURFACE AS FOLLOWS:

ROAD NAME	MARKING	MARKER
1. -L-	THERMOPLASTIC	SNOWPLOWABLE
2. ALL -Y- LINES	THERMOPLASTIC	SNOWPLOWABLE
3. BRIDGE	COLD APPLIED	PERMANENT RAISED

- U) INSTALL TEMPORARY PAVEMENT MARKING AND TEMP. PAVEMENT MARKERS ON INTERIM LAYERS OF PAVEMENT AS FOLLOWS:

ROAD NAME	MARKING	MARKER
1. -L-	PAINT	TEMPORARY RAISED
2. ALL -Y- LINES	PAINT	TEMPORARY RAISED

- V) TIE PROPOSED PAVEMENT MARKINGS LINES TO EXISTING PAVEMENT MARKING LINES.
- W) REPLACE ANY PAVEMENT MARKINGS THAT HAVE BEEN DAMAGED BY THE END OF EACH DAY'S OPERATION.
- X) PLACE AT LEAST TWO APPLICATIONS OF PAINT ON NEW ASPHALT WITH TEMPORARY TRAFFIC PATTERNS WHICH WILL REMAIN IN PLACE OVER THREE (3) MONTHS. PLACE ADDITIONAL APPLICATIONS OF PAINT UPON SUFFICIENT DRYING TIME, AS DIRECTED BY THE ENGINEER.

### TEMPORARY/FINAL SIGNALS

- Y) SHIFT AND REVISE ALL SIGNAL HEADS AS SHOWN ON THE SIGNAL PLANS.

21-JUN-2007 09:47 \\dot\cfr\0070\proj\ipproj\projects-b\3446\tr\aff\tr\trafficcontrol\tcp\lb-3446\_tc\_tcp-2.dgn wdk\duk AT WZTC224165

APPROVED: _____ DATE: _____	<b>PROJECT NOTES</b>									
	SCALE: NONE									
	DATE: 05/07									
	DESIGN BY: WRD									
	REVIEWED BY: HAL									
		<table border="1"> <tr> <th colspan="2">REVISIONS</th> </tr> <tr> <td> </td> <td> </td> </tr> <tr> <td> </td> <td> </td> </tr> <tr> <td> </td> <td> </td> </tr> </table>	REVISIONS							
REVISIONS										



**PHASING**

AT THE END OF EACH WORK DAY RETURN TRAFFIC TO A TWO-LANE TWO-WAY TRAFFIC PATTERN UNLESS OTHERWISE IS MENTIONED IN THE PHASING.

ENSURE DRIVEWAY ACCESS IS MAINTAINED TO ALL RESIDENCES AND BUSINESSES WITHIN THE PROJECT LIMITS DURING CONSTRUCTION.

STEP 1: USING RSD 1101.02 SHEET 1 OF 9 AND SHEET 4 OF 9, PERFORM THE FOLLOWING:

- INSTALL ADVANCED WORK ZONE WARNING SIGNS. (SEE TCP-8)
- INSTALL DETOUR SIGNING AND BARRICADES TO CLOSE SR 1243 (E. CENTER ST) TO THRU TRAFFIC AND DETOUR TRAFFIC ONTO OFFSITE DETOUR. (SEE TCP-4 & TCP-6)
- PEDESTRIAN TRAFFIC WILL BE MAINTAINED BY OTHERS DURING CONSTRUCTION.
- REMOVE EXISTING SIGNALS AT -L-/-Y3- INTERSECTION AND AT -L-/-Y5-/-Y6- INTERSECTION. MODIFY PAVEMENT MARKINGS ON -L- EAST OF CHURCH ST., AND INSTALL "STOP AHEAD" AND "STOP" SIGNS AT INTERSECTION -L-/-Y5-/-Y6-, AS SHOWN ON TCP-4.
- MODIFY PAVEMENT MARKING ON E. CENTER ST. WEST OF BRIDGE TO MAINTAIN TRAFFIC TO RAILROAD ST. (SEE SHEET TCP-4)

STEP 2: AWAY FROM TRAFFIC, BEGIN THE FOLLOWING:

- \* REMOVAL OF EXISTING BRIDGE.
- \* PROPOSED CONSTRUCTION UP TO BUT NOT INCLUDING THE FINAL LAYER OF SURFACE COURSE ON -L- FROM -L- STA. 14+45+/- TO -L- STA. 19+50+/- INCLUDING PROPOSED STRUCTURE.
- \* PROPOSED DRAINAGE WORK WITHIN THE PROJECT LIMITS.
- \* UTILITY WORK INCLUDING "ITS" WORK ACCORDING TO COMMUNICATION CABLE ROUTING PLANS.
- USING RSD 1101.02 SHEETS 1 OF 9 AND 4 OF 9, PERFORM THE FOLLOWING:
- \* BEGIN PROPOSED SIGNALS WORK AT -L-/-Y5-/-Y6- INTERSECTION (SEE SIGNAL PLANS).
- \* CONSTRUCT THE LEFT SIDE WIDENING UP TO THE EDGE AND ELEVATION OF EXISTING ROADWAY FROM -L- STA. 20+20 +/- TO -L- STA. 24+00.

STEP 2A: USING RSD 1101.02 SHEETS 1 OF 9 AND 4 OF 9, PERFORM THE FOLLOWING:

- \* MODIFY THE TEMPORARY MARKINGS INSTALLED PREVIOUSLY ON E. CENTER ST., EAST OF THE BRIDGE AS SHOWN ON SHEET TCP-5.
- \* SHIFT -L- TRAFFIC AS SHOWN ON TCP-5.
- \* CONSTRUCT THE RIGHT SIDE WIDENING UP TO THE EDGE AND ELEVATION OF EXISTING ROADWAY FROM -L- STA. 20+20+/- TO -L- STA. 24+00+/-.

COMPLETE THE WORK REQUIRED IN STEP-3 IN A CONTINUOUS MANNER

STEP 3: USING RSD 1101.02 SHEETS 1 OF 9 AND 4 OF 9, PERFORM THE FOLLOWINGS:

- A) RELOCATE THE BARRICADES INSTALLED IN STEP-1 FOR -L-, WEST OF THE BRIDGE IN ORDER TO CLOSE -Y3- (RAILROAD ST.) TO TRAFFIC AS SHOWN ON SHEET TCP-5
- B) AWAY FROM TRAFFIC COMPLETE THE PROPOSED CONSTRUCTION UP TO BUT NOT INCLUDING FINAL LAYER OF SURFACE COURSE AT THE FOLLOWING LOCATIONS: (SEE ROADWAY PLANS AND SHEET TCP-5)
  - \* E. CENTER ST. FROM -L- STA. 12+15 TO -L- STA. 14+45 +/-
  - \* RAILROAD ST. FROM -Y3- STA. 10+00 TO -Y3- STA. 11+31 +/-
- USING RSD 1101.02 SHEETS 1 OF 9 AND 4 OF 9, COMPLETE INTALLATION OF PROPOSED SIGNAL AT INTERSECTION -L-/-Y5-/-Y6. (SEE SIGNAL PLANS)
- USING RSD 1101.02 SHEETS 1 OF 9 AND 4 OF 9, PERFORM THE FOLLOWING:
- CONSTRUCT UP TO BUT NOT INCLUDING FINAL LAYER OF SURFACE COURSE AT THE FOLLOWING LOCATIONS:
  - \* -L- FROM STA. 19+50+/- TO STA. 24+00.00
  - \* -Y5- FROM STA. 10+00.00 TO -Y5- STA. 11+45.00
  - \* -Y6- FROM STA. 10+00.00 TO -Y6- STA. 11+30.00

STEP 4: USING RSD 1101.02 SHEET 1 OF 9 AND SHEET 4 OF 9, PERFORM THE FOLLOWING:

- PLACE FINAL LAYER OF SURFACE COURSE AND FINAL PAVEMENT MARKING (THERMOPLASTIC) AND PAVEMENT MARKERS (SNOWPLOWABLE) ON -L- AND -Y- LINES, AND PAVEMENT MARKING (COLD APPLIED) AND PERMANENT RAISED MARKERS ON THE PROPOSED BRIDGE (SEE SHEET PM-1).
- ACTIVATE FINAL SIGNAL AT -L-/-Y5-/-Y6- INTERSECTION, AND OPEN CHURCH ST. (-Y5- AND -Y6-) AND -L- EAST OF CHURCH ST. TO THE TRAFFIC IN THE FINAL PATTERN.

STEP 5: USING RSD 1101.02, SHEET 1 OF 9, REMOVE ALL ADVANCE WORK ZONE SIGNS, REMOVE ALL TRAFFIC CONTROL DEVICES, AND OPEN -L- AND -Y- LINES TO PROPOSED TRAFFIC PATTERN.

**TEMPORARY PAVEMENT MARKING SCHEDULE**

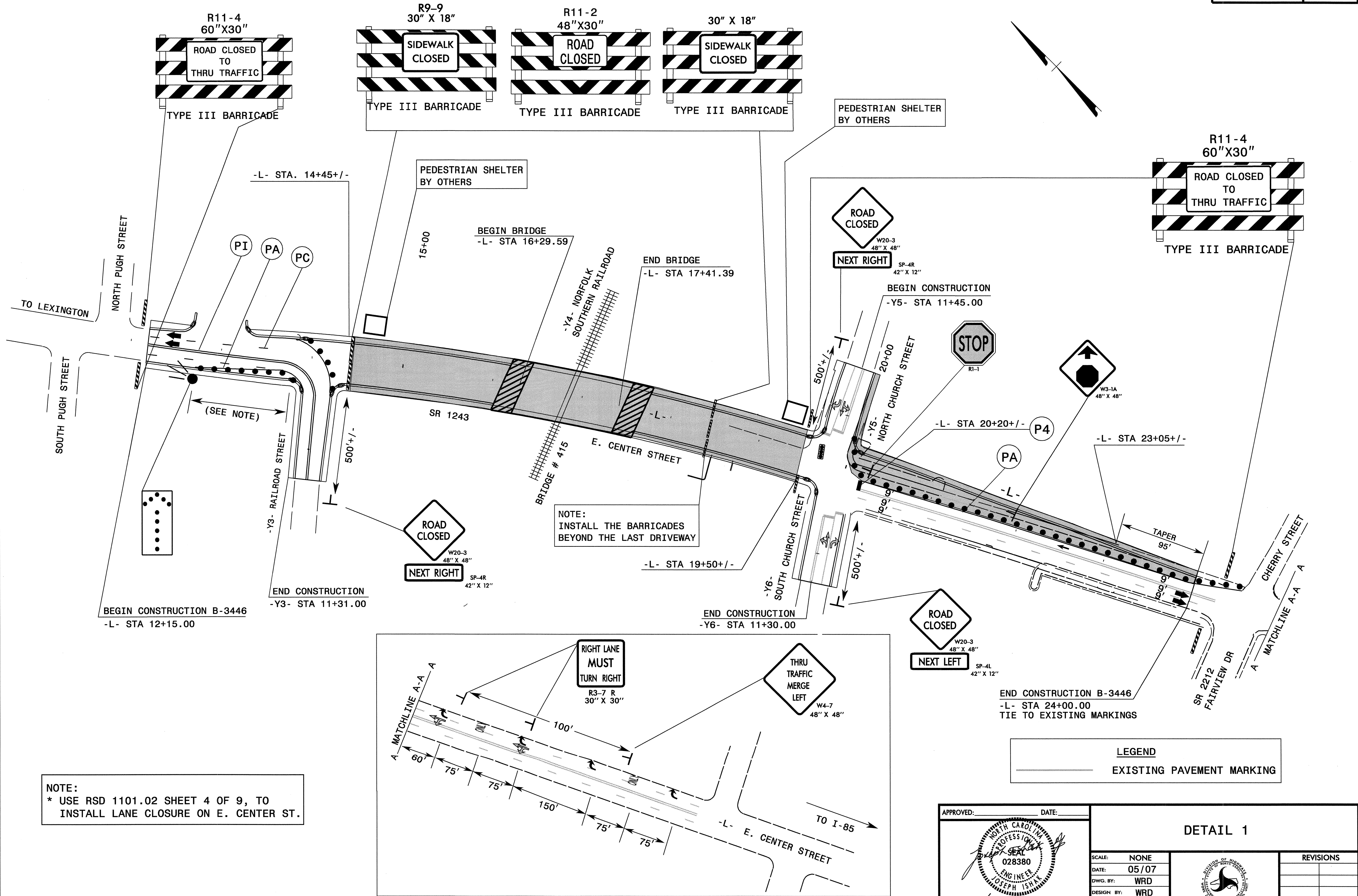
SYMBOL	DESCRIPTION	BREAKDOWN		TOTAL
		PAVEMENT MARKINGS		
PAINT (24")				
P4	WHITE STOPBAR (2X)	260	LF	TOTAL 260 LF
PAINT (4")				
PA	WHITE EDGELINE (2X)	2610	LF	TOTAL 12999 LF
PC	10 FT. WHITE SKIP (2X)	1335	LF	
PE	WHITE SOLID LANE LINE (2X)	930	LF	
PI	YELLOW DOUBLE CENTER (2X)	8124	LF	
PAINT (8")				
PX	WHITE CROSSWALK LINE (2X)	600	LF	TOTAL 600 LF
PAINTMARKING SYMBOLS				
QA	LEFT TURN ARROW (2X)	6	EA	TOTAL 32 EA
QB	RIGHT TURN ARROW (2X)	8	EA	
QC	STRAIGHT ARROW (2X)	4	EA	
QD	COMBO. STRAIGHT/LEFT (2X)	8	EA	
QE	COMBO. STRAIGHT/RIGHT (2X)	6	EA	
PAINTMARKING CHARACTERS				
QI	ALPHANUMERIC CHARACTER (2X)	32	EA	TOTAL 32 EA
MARKERS				
TEMPORARY RAISED PAVEMENT MARKERS				
MH	YELLOW & YELLOW	30	EA	TOTAL 30 EA

**NOTES:**

- 1) AS DIRECTED BY THE ENGINEER, TEMPORARY PAVEMENT MARKING (PAINT) MAY BE USED TO STRIPE THE FINAL TRAFFIC PATTERN ON -L- AND -Y- LINES. THIS SCHEDULE INCLUDES QUANTITIES FOR PLACING TWO APPLICATIONS OF PAINT ON THE FINAL SURFACE OF NEW ASPHALT WITH PERMANENT TRAFFIC PATTERNS WHICH WILL REMAIN IN PLACE UNTIL THE PROPOSED FINAL PAVEMENT MARKING IS APPLIED.
- 2) FOR EACH PAINT PAVEMENT MARKING ITEM, 1X IMPLIES A SINGLE APPLICATION, 2X IMPLIES TWO APPLICATIONS, AND 3X IMPLIES THREE APPLICATIONS.

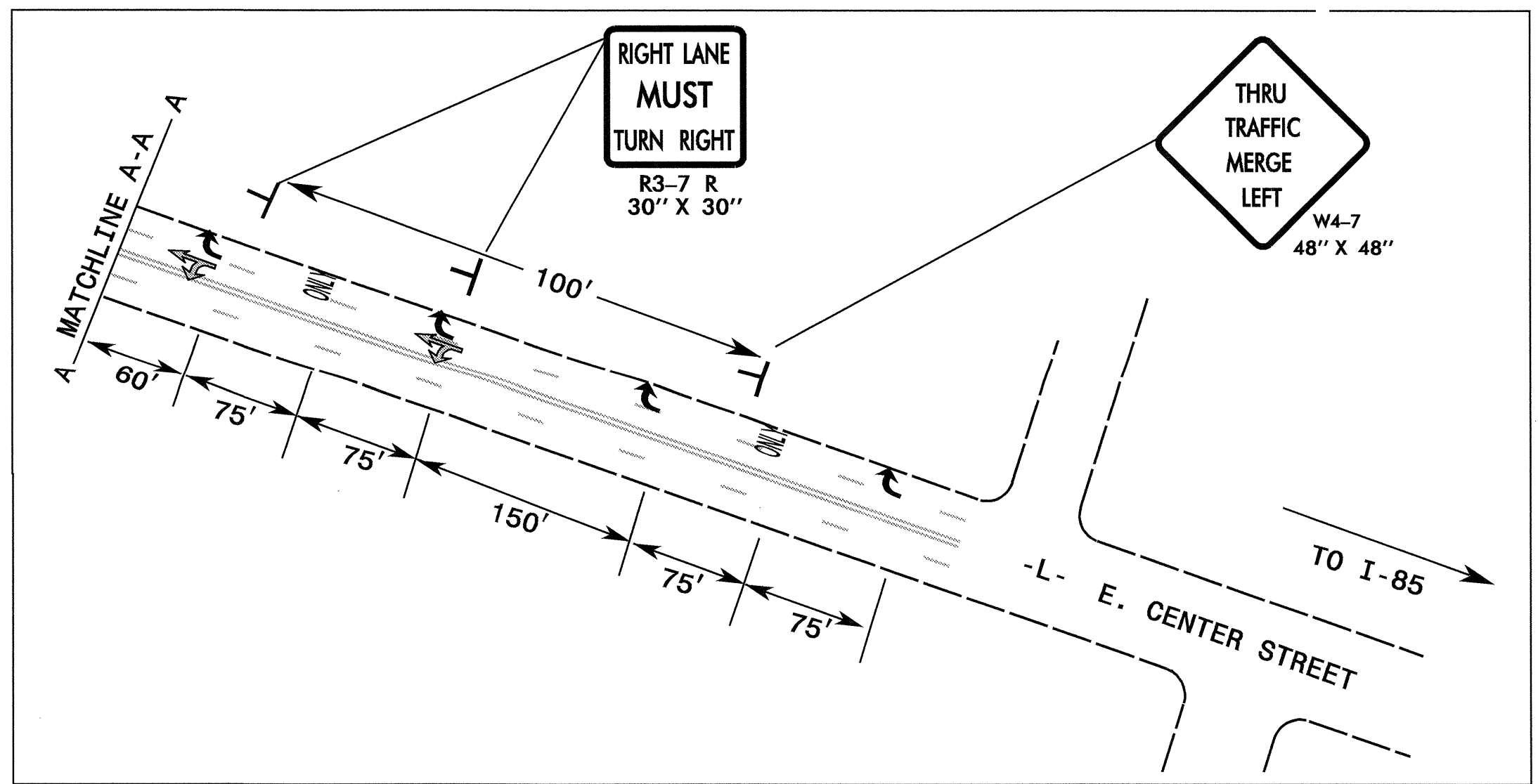
21-JUN-2007 09:47  
\\dot\dfsroot\0\proj\Hipp\proj\Traffic\TrafficControl\Top\B-3446.tc\_top-3.dgn  
WZTC224165  
WZTC224165  
WZTC224165  
WZTC224165

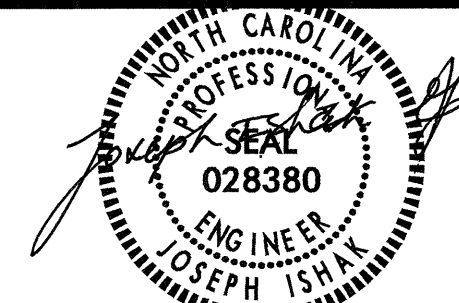
APPROVED: _____ DATE: _____	<b>PHASING AND TEMPORARY PAVEMENT MARKING SCHEDULE</b>	
	SCALE: NONE	
	DATE: 05/07	
	DWG. BY: WRD	
DESIGN BY: WRD		REVISIONS
REVIEWED BY: HAL		_____

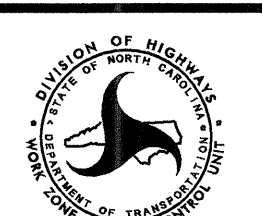


**LEGEND**  
 ——— EXISTING PAVEMENT MARKING

**NOTE:**  
 \* USE RSD 1101.02 SHEET 4 OF 9, TO  
 INSTALL LANE CLOSURE ON E. CENTER ST.

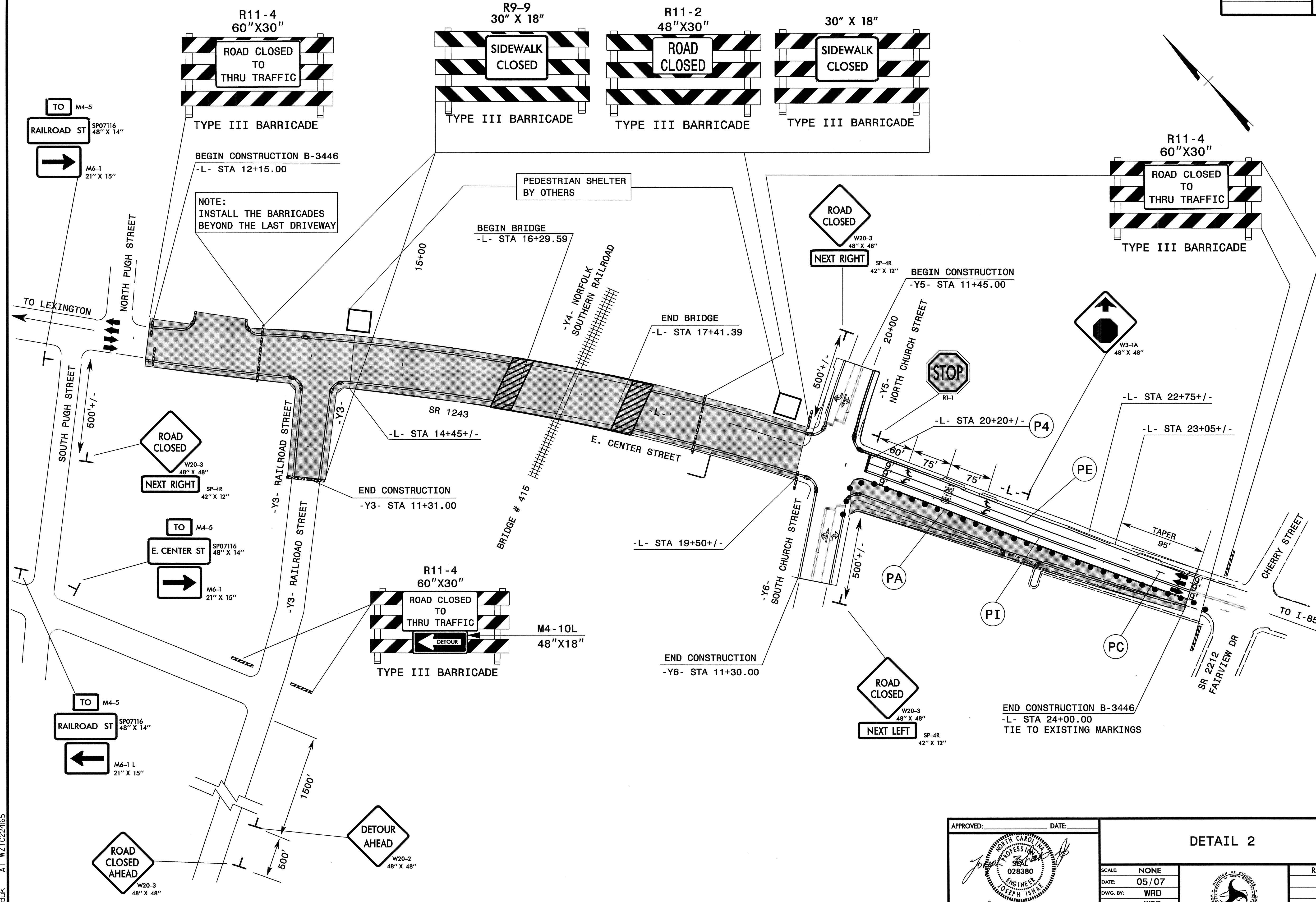


APPROVED: \_\_\_\_\_ DATE: \_\_\_\_\_  
  
 JOSEPH ISHIY  
 ENGINEER  
 028380  
 June 21, 2007

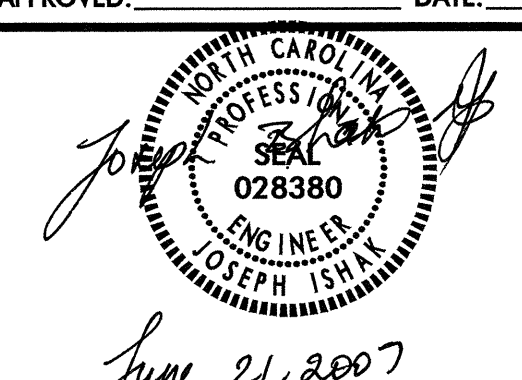

<b>DETAIL 1</b>										
SCALE: NONE		<table border="1"> <tr><th colspan="2">REVISIONS</th></tr> <tr><td> </td><td> </td></tr> <tr><td> </td><td> </td></tr> <tr><td> </td><td> </td></tr> </table>	REVISIONS							
REVISIONS										
DATE: 05/07										
DWG. BY: WRD										
DESIGN BY: WRD										
REVIEWED BY: HAL	CADD FILE									

21 JUN 2007 10:01  
 C:\p01\proj\101\proj\101\traffic\traffic\control\tcp-b-3446-rc-tcp-4.dgn  
 wdkduk AT WZ1022165

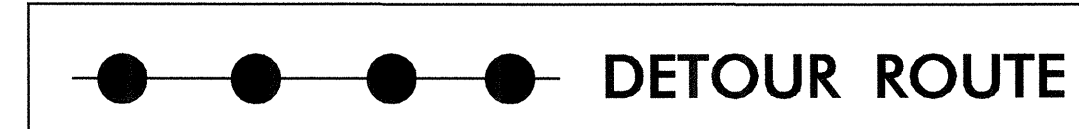
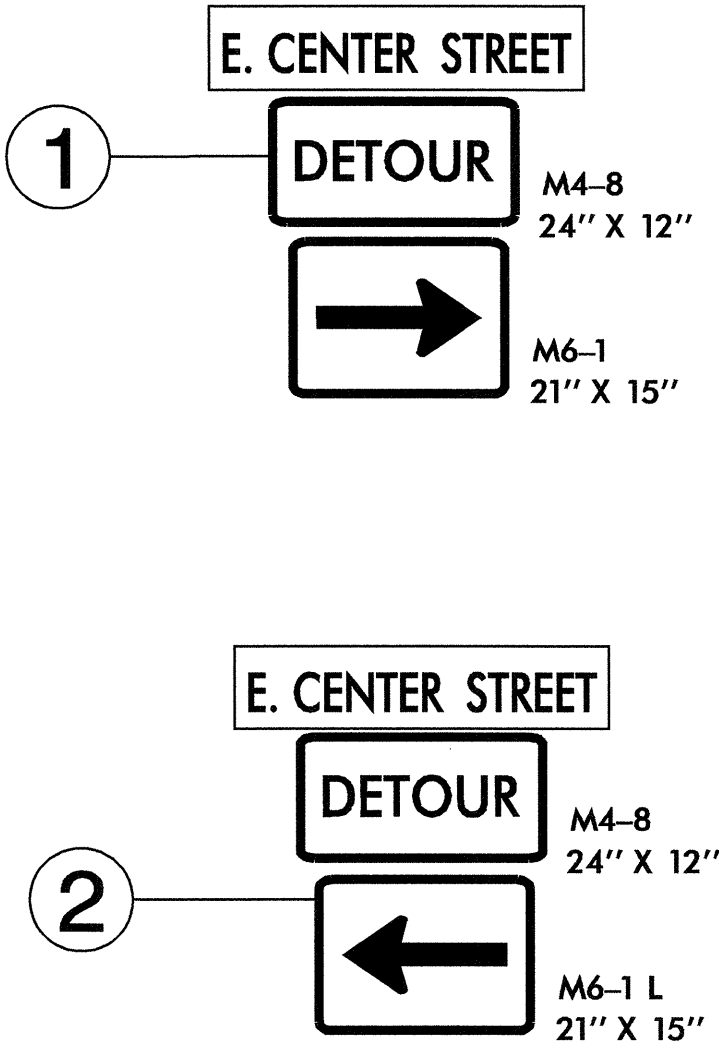
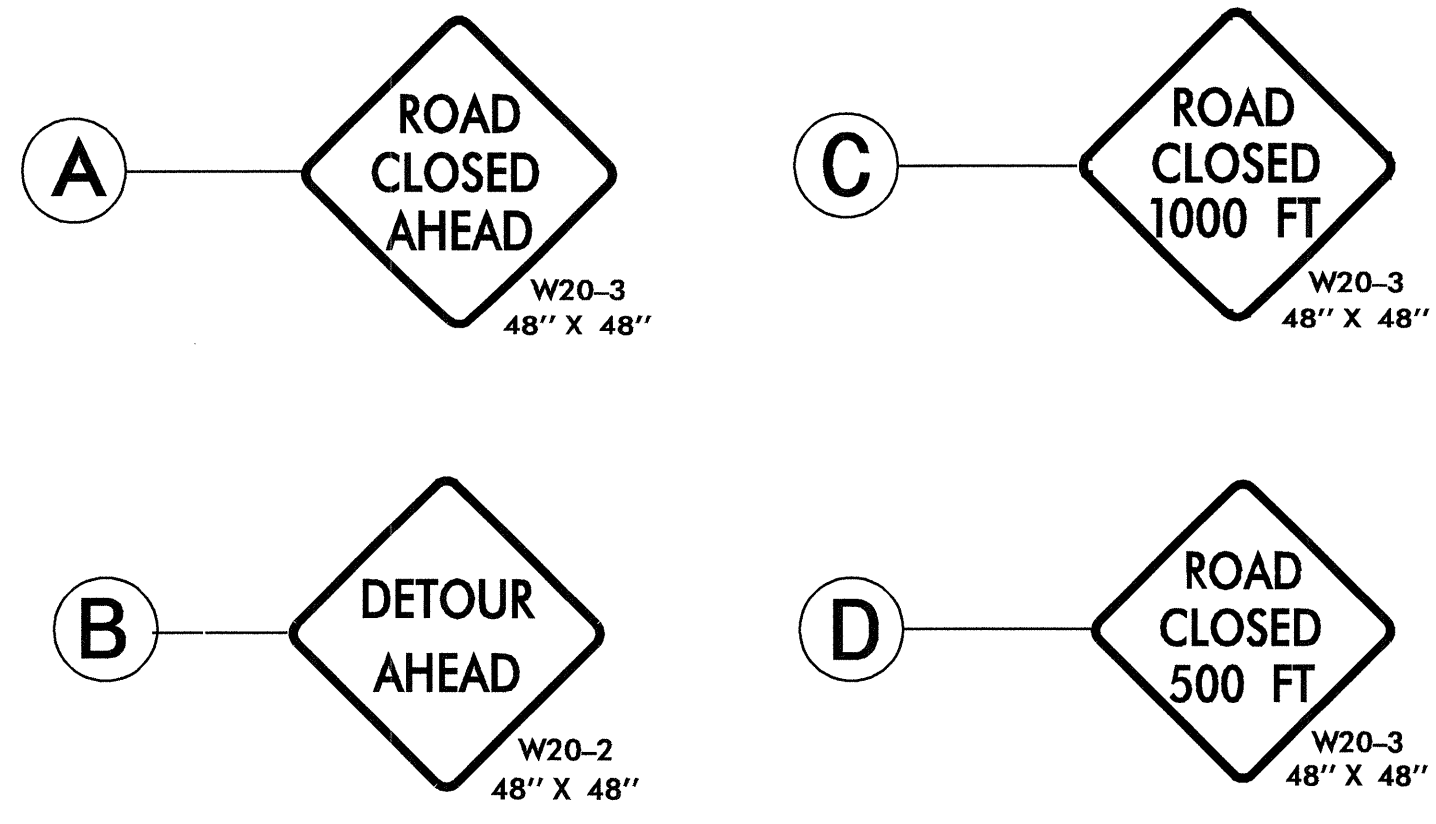
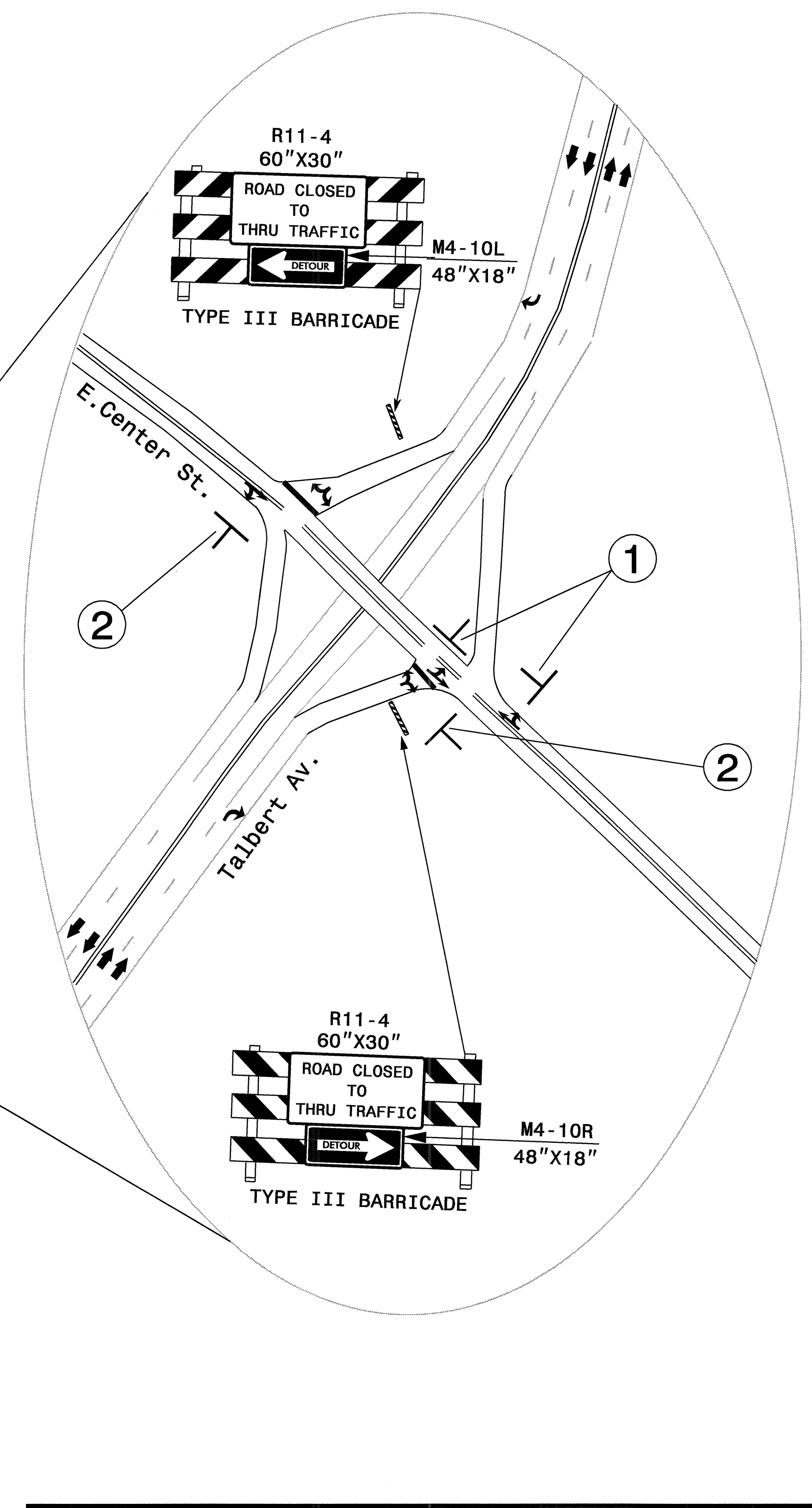
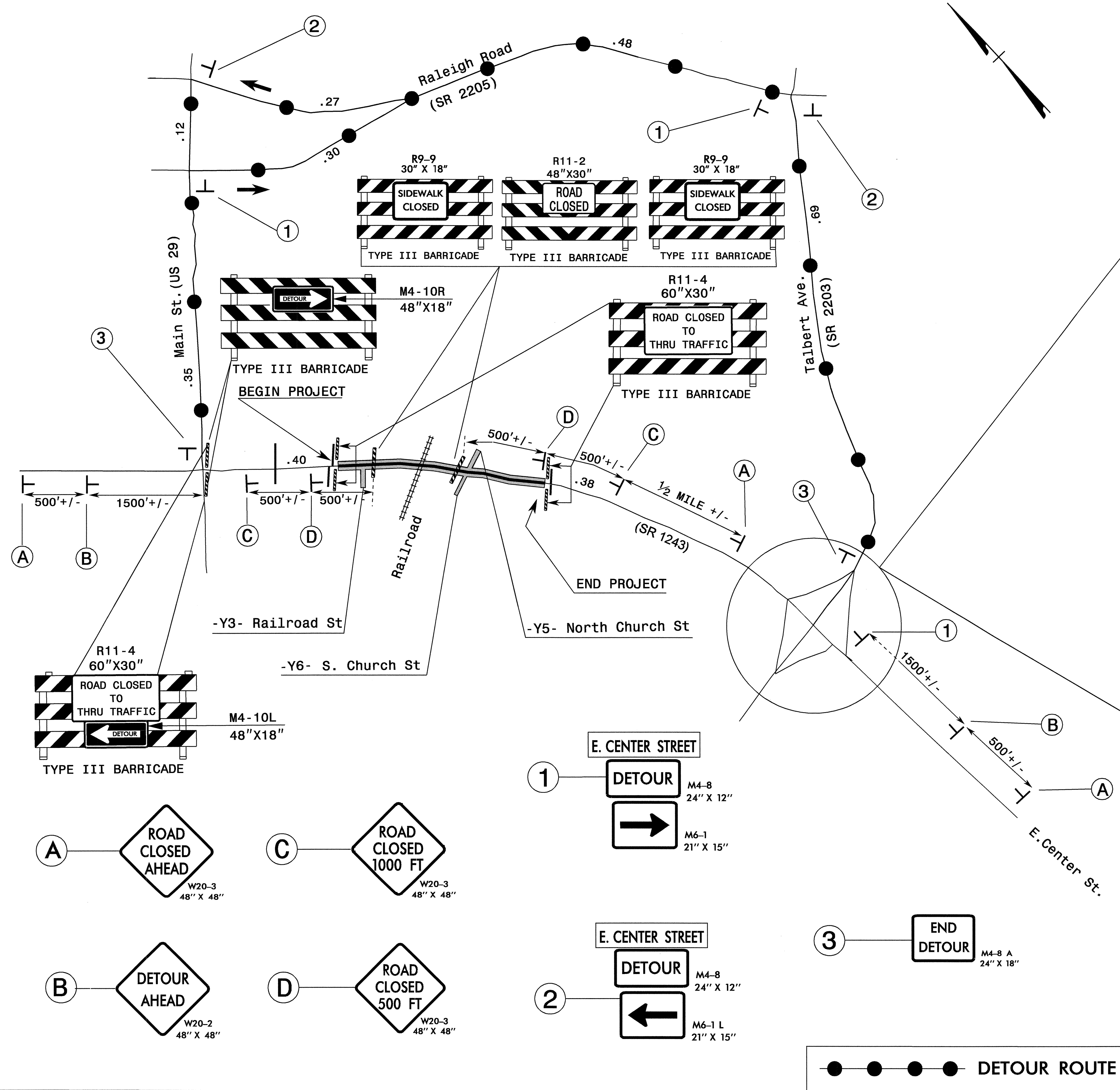




21-JUN-2007 09:49  
 \\dot\vtferoo\toprojects\b3446\trafficcontrol\top-b3446-tc-tcp-5.dgn  
 W20-3  
 AT W20-3

APPROVED: 	DATE: June 21, 2007	<b>DETAIL 2</b>	
SCALE: NONE	DATE: 05/07		REVISIONS
DWG. BY: WRD	DESIGN BY: WRD		
REVIEWED BY: HAL	REVIEWED BY: HAL		

DAVIDSON COUNTY



APPROVED: \_\_\_\_\_ DATE: \_\_\_\_\_

**DETOUR MAP AND SIGNING**

SCALE: NONE  
 DATE: 05/07  
 DWG. BY: WRD  
 DESIGN BY: WRD  
 REVIEWED BY: HAL

REVISIONS


CADD FILE

08-MAY-2007 10:55 \\dot\dfsroot\pco\proj\traffic\trafficcontrol\top\b-3446-rc\_top-6.dgn AT W:\T224165 wdakduk



**SIGN NUMBER:** SPOS242  
**TYPE:** D  
**QUANTITY:** 1  
**SIGN WIDTH:** 60"  
**HEIGHT:** 14"  
**TOTAL AREA:** 5.8 Sq.Ft.  
**BORDER TYPE:** FLUSH  
**RECESS:** 0.38"  
**WIDTH:** 0.63"  
**RADII:** 1.5"  
**NO. Z BARS:**  
**LENGTH:**

**BACKG COLOR:** Fluorescent Orange  
**COPY COLOR:** Black

SYMBOL	X	Y	WID	HT

**MAT'L:** 0.125" (3.2 mm) ALUMINUM  
0.079" COMPOSITE

**DESIGN BY:** R. HENNEIN  
**PROJECT ID:** B-3446  
**CHECKED BY:**  
**DIV:** 9  
**STD #:** N/A  
**DATE:** Aug 24, 2005

**USE NOTES:**  
1. Legend and border shall be direct applied non-reflective sheeting.  
2. Background shall be Type VII, VIII, or IX (prismatic) retroreflective sheeting.

**LETTER POSITIONS**

Letter spacings are to start of next letter													Series/Size	Text Length
E	.	C	E	N	T	E	R	S	T				C6	47.9
6	3.7	1.1	6	4.3	4	4.3	4	4	3.3	6	4.3	3	6	

Spacing Factor is 1 unless specified otherwise

FILENAME: \* NORTH CAROLINA D.O.T. SIGN DETAIL

**SIGN NUMBER:** SP07116  
**TYPE:** D  
**QUANTITY:** 1  
**SIGN WIDTH:** 48"  
**HEIGHT:** 14"  
**TOTAL AREA:** 4.7 Sq.Ft.  
**BORDER TYPE:** RECESSED  
**RECESS:** 0.38"  
**WIDTH:** 0.63"  
**RADII:** 1.5"  
**NO. Z BARS:**  
**LENGTH:**

**BACKG COLOR:** Fluorescent Orange  
**COPY COLOR:** Black

SYMBOL	X	Y	WID	HT

**MAT'L:** 0.125" (3.2 mm) ALUMINUM  
0.079" COMPOSITE

**DESIGN BY:** R. HENNEIN  
**PROJECT ID:** B-3446  
**CHECKED BY:**  
**DIV:** 9  
**DATE:** May 03, 2007

**USE NOTES:**  
1. Legend and border shall be direct applied non-reflective sheeting.  
2. Background shall be Type VII, VIII, or IX (prismatic) retroreflective sheeting.

**LETTER POSITIONS**

Letter spacings are to start of next letter													Series/Size	Text Length
R	A	I	L	R	O	A	D	S	T				C 2000	41.2
3.4	3.7	4.4	1.8	3.6	4	4	4.4	3.4	5	3.7	3.1	3.4		

Spacing Factor is 1 unless specified otherwise

FILENAME: SP07116\_railroadst NORTH CAROLINA D.O.T. SIGN DETAIL

APPROVED: \_\_\_\_\_ DATE: \_\_\_\_\_

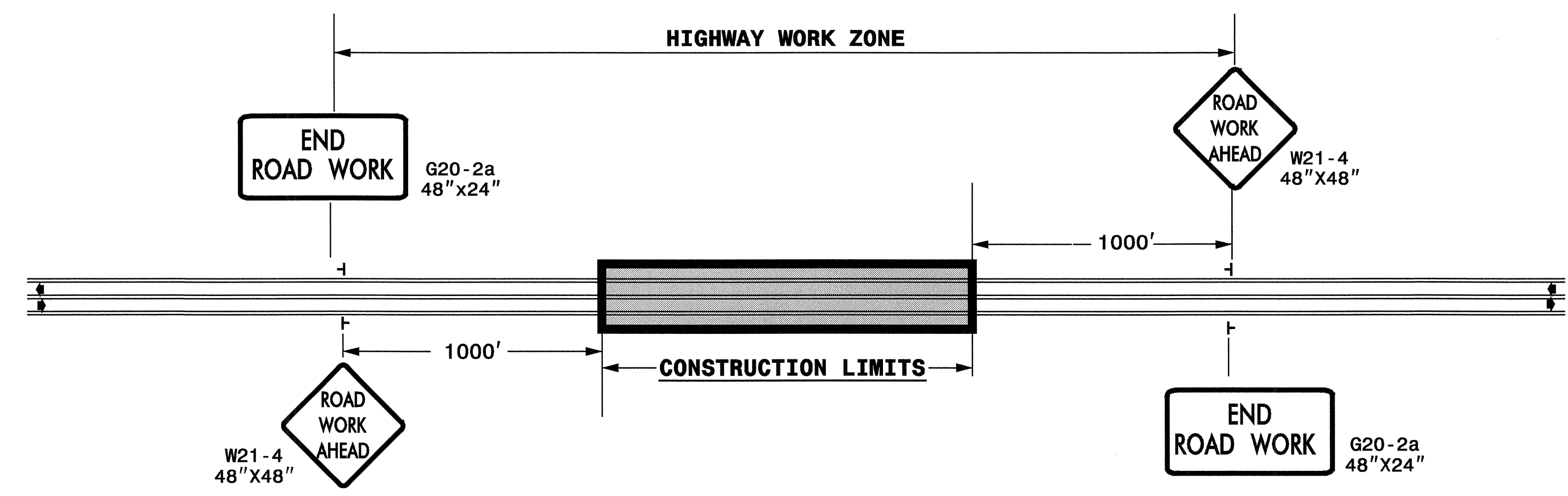
May 8, 2007

### SIGN DESIGN

SCALE:	REVISIONS
NONE	
DATE: 05/07	
DWG. BY: WRD	
DESIGN BY: WRD	
REVIEWED BY: HAL	

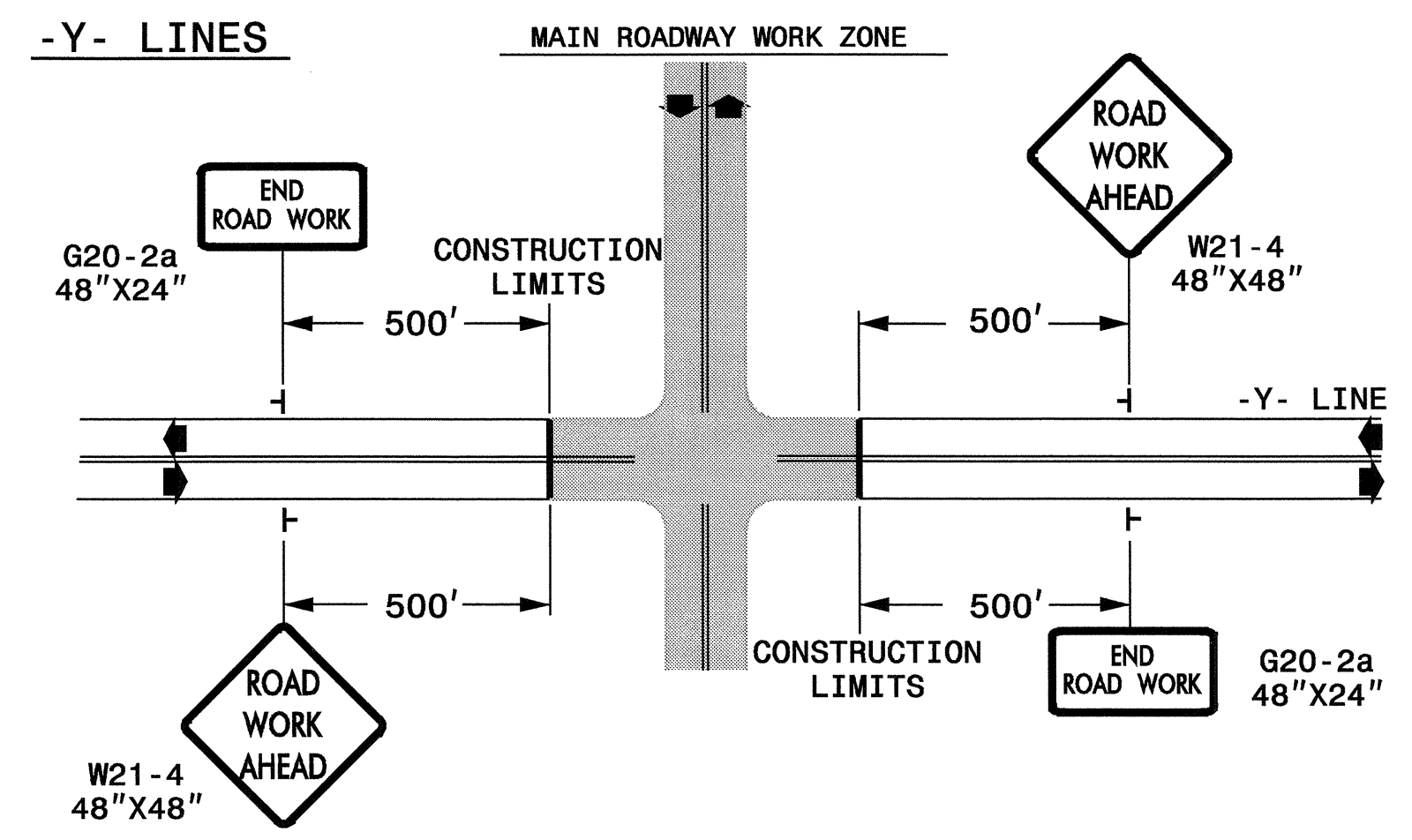
08-MAY-2007 11:12  
 \\dot\dfsroot\proj\traffic\projects-b\3446\traffic\control\top\b-3446.tc\_top-7.dgn  
 AT WZTC224165

**TWO-WAY UNDIVIDED \*\* (L-LINES)**



STATE OF NORTH CAROLINA  
 DEPT. OF TRANSPORTATION  
 DIVISION OF HIGHWAYS  
 RALEIGH, N.C.

**ROADWAYS INTERSECTING ALONG 2 WAY UNDIVIDED WORK ZONE (Y-LINES)**



DETAIL DRAWING FOR  
 TWO-WAY UNDIVIDED  
 WORK ZONE WARNING SIGNS

**GENERAL NOTES**

- USE FLUORESCENT ORANGE SHEETING (TYPE VII OR HIGHER) ON ALL ADVANCED WORK ZONE SIGNS.
- DO NOT INSTALL ADVANCE WARNING SIGNS MORE THAN 3 DAYS PRIOR TO BEGINNING OF WORK.
- SIGNS SHOWN ARE REQUIRED FOR WORK ZONES THAT WILL REMAIN IN EFFECT OVERNIGHT. FOR SHORT-TERM DAILY MAINTENANCE TYPE OPERATIONS, THIS SIGNING APPLICATION IS OPTIONAL; MAY USE ONLY APPLICABLE ROADWAY STANDARD DRAWINGS INSTEAD. HOWEVER, IF THIS SIGNING APPLICATION IS USED, SIGNS MAY BE PORTABLE MOUNTED.
- ALL SIGN SPACING DIMENSIONS ARE APPROXIMATE, FIELD ADJUST AS NECESSARY OR AS DIRECTED.
- USE 3LB STEEL U-CHANNEL POST OR 4" X 4" WOOD POST FOR ALL WORK ZONE SIGNS. 3LB STEEL U-CHANNEL POSTS MUST MEET THE REQUIREMENTS OF STANDARD SPECIFICATION SECTION 1094-1(B), MAY BE GALVANIZED STEEL, OR MAY BE PAINTED GREEN BY THE POST MANUFACTURER. SQUARE STEEL TUBING POSTS HAVING EQUIVALENT STRENGTH OF THE 3 LB STEEL U-CHANNEL POST ARE ALSO ACCEPTABLE FOR USE. ERECT SIGNS PER ROADWAY STANDARD DRAWING 1110.01. PAYMENT FOR WOOD POSTS, 3LB STEEL U-CHANNEL AND SQUARE STEEL TUBING POSTS WITH SIGNS WILL BE MADE ACCORDING TO STANDARD SPECIFICATION "WORK ZONE SIGNS" SECTION 1110.
- WHEN NECESSARY, USE SPLICING IN ACCORDANCE WITH ROADWAY STANDARD DRAWING NO. 1110.01. REMOVE ENTIRE POST WHEN REMOVING SIGNS WITH SPLICED POSTS.
- DO NOT BACK BRACE SIGN SUPPORTS.
- \*\* TWO-WAY UNDIVIDED ADVANCE WARNING SIGN CONFIGURATION MAY BE USED ON URBAN MULTI-LANE FACILITIES WHERE CONDITIONS LIMIT THE USE OF DUAL MOUNTED SIGNS AS DETERMINED BY THE ENGINEER.

**LEGEND**

- ┆ STATIONARY SIGN
- ◀ DIRECTION OF TRAFFIC FLOW

SHEET 1 OF 1

APPROVED: _____	DATE: _____	DETAIL DRAWING FOR TWO-WAY UNDIVIDED AND URBAN FREEWAYS ADVANCED WORK ZONE WARNING SIGNS	
SCALE: NONE	REVISIONS:	7-98	10/01
DATE: 05/07	DWG. BY:	10-98	03/04
DESIGN BY:	REVIEWED BY:	01/01	11/04
CADD FILE			

08-MAY-2007 10:55  
 \\dot\dfsroot\01\pco\1\p\proj\01\tr\traffic\tr\aff\control\top\b-3446-rc-top-8.dgn  
 wdakduk AT WZTC2465