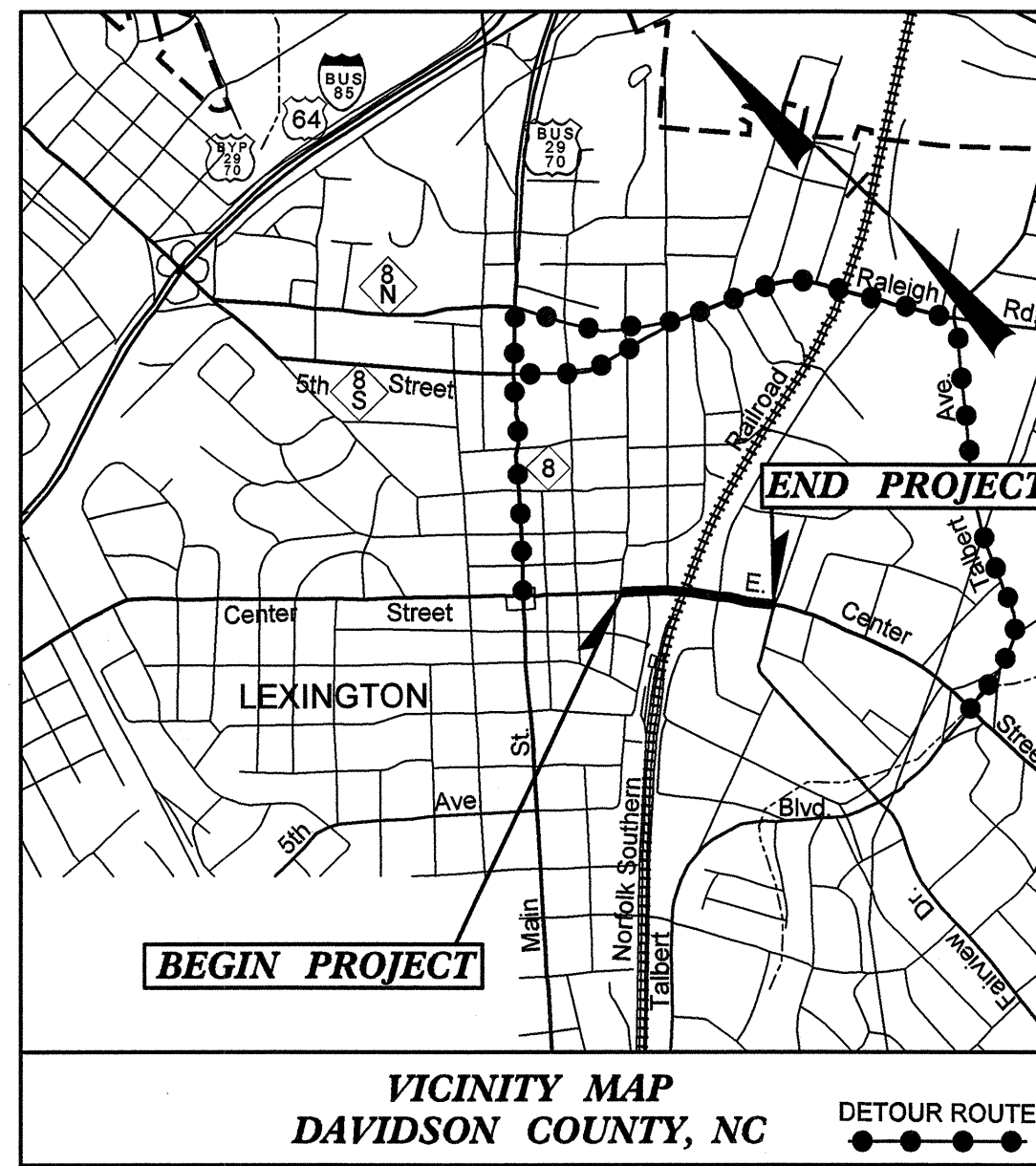


**CONTRACT: C201604**      **TIP PROJECT: B-3446**

See Sheet 1-B For Conventional Symbols



STATE OF NORTH CAROLINA  
 DIVISION OF HIGHWAYS  

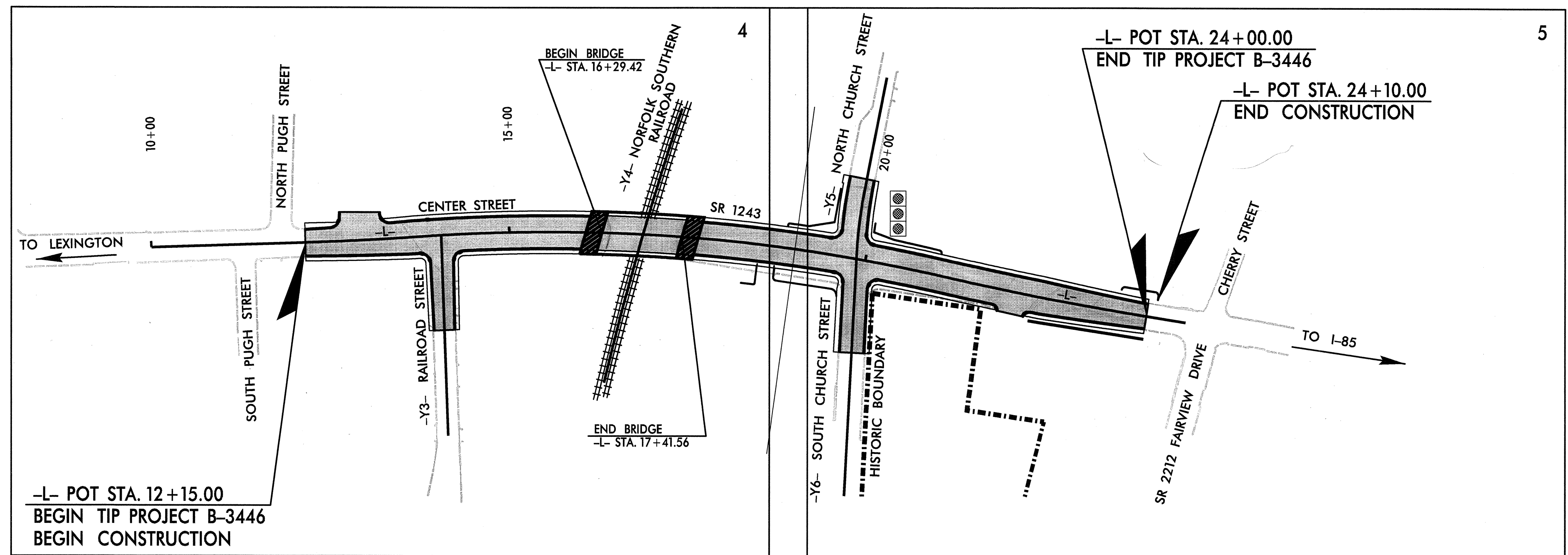
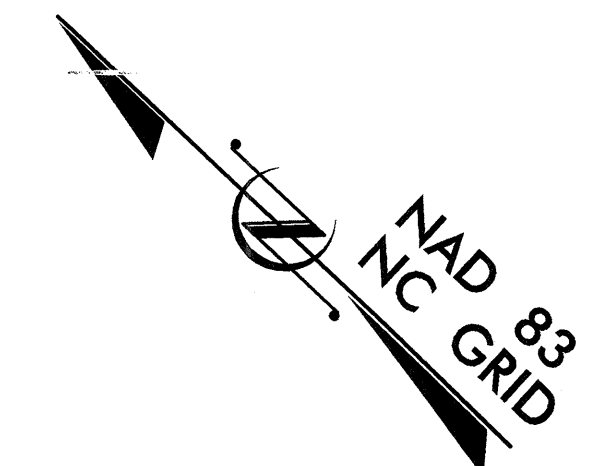

---

**DAVIDSON COUNTY**

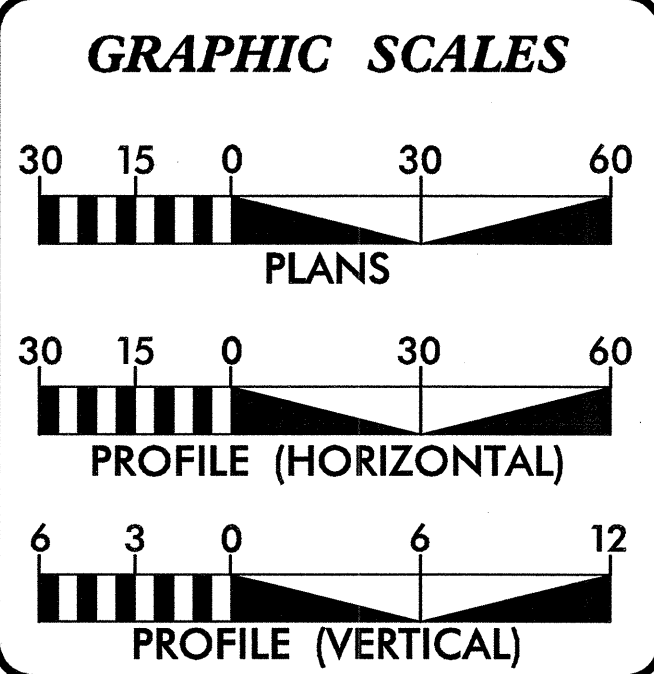

---

**LOCATION: BRIDGE #415 OVER NORFOLK SOUTHERN RAILROAD ON SR 1243 (CENTER STREET) IN LEXINGTON**  
**TYPE OF WORK: GRADING, PAVING, DRAINAGE, STRUCTURE AND SIGNALS**

STATE	STATE PROJECT REFERENCE NO.	SHEET NO.	TOTAL SHEETS
N.C.	B-3446	1	
WBS NO.	P.A. PROJ. NO.	DESCRIPTION	
33066.1.1	BRSTP-1243(2)	P.E.	
33066.2.2	BRSTP-1243(2)	R / W & UTIL.	
33066.3.2	BRSTP-1243(4)	CONSTRUCTION	



NCDOT CONTACT:  
**DOUG TAYLOR, P. E.**  
 DESIGN SERVICES-ENGINEERING COORDINATION



**DESIGN DATA**

ADT 2006 =	18,410
ADT 2026 =	25,335
DHV =	10 %
D =	55 %
T =	3 % *
V =	25 MPH
*(TTST 1% + DUAL 2%)	
FUNC CLASS =	URBAN MINOR ARTERIAL

**PROJECT LENGTH**

LENGTH OF ROADWAY TIP PROJECT B-3446	=	0.203 MILES
LENGTH OF STRUCTURE TIP PROJECT B-3446	=	0.021 MILES
TOTAL LENGTH OF TIP PROJECT B-3446	=	0.224 MILES

Prepared In the Office of:  
**ARCADIS**  
180 Corporate Center, Raleigh, NC 27601-5075  
 Tel: 919-954-4225 Fax: 919-954-5446  
 www.arcadis-us.com

for the North Carolina Department of Transportation  
 2006 STANDARD SPECIFICATIONS

RIGHT OF WAY DATE: 11-19-04	<b>LAURA FISHER, P.E.</b> PROJECT ENGINEER
LETTING DATE: 08-21-07	<b>STEPHEN SMALLWOOD, P. E.</b> PROJECT DESIGN ENGINEER

**HYDRAULICS ENGINEER**  
  
 SIGNATURE: *Max S. Price* P.E.

**ROADWAY DESIGN ENGINEER**  
  
 SIGNATURE: *Laura C. Fisher* P.E.

DIVISION OF HIGHWAYS  
 STATE OF NORTH CAROLINA

STATE DESIGN ENGINEER  
**DEPARTMENT OF TRANSPORTATION  
 FEDERAL HIGHWAY ADMINISTRATION**

APPROVED  
 DIVISION ADMINISTRATOR

ARCADIS CM, Arcadis 240450, Title: 240450, File: Arcadis\Roadway\Proj\B3446\_Lxy\_tsh.dgn



# ARCADIS

G & M of North Carolina, Inc.  
 WWW.ARCADIS-US.COM  
 801 Corporate Center Drive, Suite 300  
 Raleigh, NC 27607-5073  
 Tel: 919/854-1282 Fax: 919/854-5448

PROJECT REFERENCE NO.	SHEET NO.
-----------------------	-----------

B-3446

I-A

R/W SHEET NO.
---------------

ROADWAY DESIGN

ENGINEER

NORTH CAROLINA

PROFESSIONAL

030871

LAURA C. FISHER

ENGINEER

SEAL NOT VALID UNLESS SIGNED AND DATED

HYDRAULICS

ENGINEER

NORTH CAROLINA

PROFESSIONAL

SEAL

MAX S. PRINE

ENGINEER

6/11/09

EFF. 07-18-06

REV. 01-02-07

SHEET NUMBER	SHEET
1	TITLE SHEET
1A	INDEX OF SHEETS, GENERAL NOTES AND STANDARDS
1B	CONVENTIONAL SYMBOLS
1C	SURVEY CONTROL SHEET
2 THRU 2A	PAVEMENT SCHEDULE, TYPICAL SECTIONS, WEDGING DETAIL AND SIDEWALK DETAIL
3	SUMMARY OF QUANTITIES
3A	DRAINAGE SUMMARY
3B	SUMMARY OF EARTHWORK, SUMMARY OF ASPHALT PAVEMENT REMOVAL, SUMMARY OF BREAKING EXISTING ASPHALT AND PARCEL INDEX
4 THRU 5	PLAN SHEETS
6 THRU 7	PROFILE SHEETS
TCP-1 THRU TCP-8	TRAFFIC CONTROL PLANS
PM-1	PAVEMENT MARKING PLAN
EC-1 THRU EC-6	EROSION CONTROL PLANS
SIGN-1 THRU SIGN-3	SIGNING PLANS
SIG-1 THRU SIG-6	SIGNAL PLANS
UC-1 THRU UC-4	UTILITY CONSTRUCTION PLANS
UD-1 THRU UD-3	UTILITY BY OTHERS
X-1	CROSS SECTION SUMMARY SHEET
X-2 THRU X-15	CROSS SECTIONS
S-1 THRU S-30	STRUCTURE PLANS
W-1 THRU W-3	GRAVITY WALL PLANS

## GENERAL NOTES:

2006 SPECIFICATIONS  
 EFFECTIVE: 07-18-06  
 REVISED: 07-18-06

GRADE LINE:  
GRADING AND SURFACING:

THE GRADE LINES SHOWN DENOTE THE FINISHED ELEVATION OF THE PROPOSED SURFACING AT GRADE POINTS SHOWN ON THE TYPICAL SECTIONS. GRADE LINES MAY BE ADJUSTED AT THEIR BEGINNING AND ENDING AND AT STRUCTURES AS DIRECTED BY THE ENGINEER IN ORDER TO SECURE A PROPER TIE-IN.

## CLEARING:

CLEARING ON THIS PROJECT SHALL BE PERFORMED TO THE LIMITS ESTABLISHED BY METHOD II.

## SUPERELEVATION:

ALL CURVES ON THIS PROJECT SHALL BE SUPERELEVATED IN ACCORDANCE WITH STD. NO. 225.04 USING THE RATE OF SUPERELEVATION AND RUNOFF SHOWN ON THE PLANS. SUPERELEVATION IS TO BE REVOLVED ABOUT THE GRADE POINTS SHOWN ON THE TYPICAL SECTIONS.

## SIDE ROADS:

THE CONTRACTOR WILL BE REQUIRED TO DO ALL NECESSARY WORK TO PROVIDE SUITABLE CONNECTIONS WITH ALL ROADS, STREETS, AND DRIVES ENTERING THIS PROJECT. THIS WORK WILL BE PAID FOR AT THE CONTRACT UNIT PRICE FOR THE PARTICULAR ITEMS INVOLVED.

## DRIVEWAYS:

DRIVEWAYS SHALL BE CONSTRUCTED IN ACCORDANCE WITH STD. 848.02 USING 3' RADII OR RADII AS SHOWN ON THE PLANS. LOCATIONS OF DRIVES WILL BE AS SHOWN ON THE PLANS OR AS DIRECTED BY THE ENGINEER.

## STREET TURNOUT:

STREET RETURNS SHALL BE CONSTRUCTED IN ACCORDANCE WITH STD. NO. 848.04 USING THE RADII NOTED ON PLANS.

## TEMPORARY SHORING:

SHORING REQUIRED FOR THE MAINTENANCE OF TRAFFIC WILL BE PAID FOR AS "EXTRA WORK" IN ACCORDANCE WITH SECTION 104-7.

## SUBSURFACE PLANS:

NO SUBSURFACE PLANS ARE AVAILABLE ON THIS PROJECT. THE CONTRACTOR SHOULD MAKE HIS OWN INVESTIGATION AS TO THE SUBSURFACE CONDITIONS.

## END BENTS:

THE ENGINEER SHALL CHECK THE STRUCTURE END BENT PLANS, DETAILS, AND CROSS-SECTION PRIOR TO SETTING OF THE SLOPE STAKES FOR THE EMBANKMENT OR EXCAVATION APPROACHING A BRIDGE.

## UTILITIES:

UTILITY OWNERS ON THIS PROJECT ARE  
 DUKE ENERGY CORP. (POWER)  
 LEX COM (TELEPHONE)  
 CITY OF LEXINGTON (WATER, SANITARY SEWER, POWER, GAS)

ANY RELOCATION OF EXISTING UTILITIES WILL BE ACCOMPLISHED BY OTHERS, EXCEPT AS SHOWN ON THE PLANS.

## RIGHT-OF-WAY MARKERS:

ALL RIGHT-OF-WAY MARKERS ON THIS PROJECT SHALL BE PLACED BY OTHERS.

## WHEELCHAIR RAMPS:

WHEELCHAIR RAMPS ARE SHOWN ON THE PLANS AT APPROXIMATE LOCATIONS. THE CONSTRUCTION OF ALL WHEELCHAIR RAMPS SHALL BE IN ACCORDANCE WITH DETAILS IN PLANS.

## 2006 ROADWAY STANDARD DRAWINGS

The following Roadway Standards as appear in "Roadway Standard Drawings" Highway Design Branch - N. C. Department of Transportation - Raleigh, N. C., Dated July 18, 2006 are applicable to this project and by reference hereby are considered a part of these plans:

STD.NO.	TITLE
DIVISION 2 - EARTHWORK	
200.02	Method of Clearing - Method II
225.02	Guide for Grading Subgrade - Secondary and Local
225.04	Method of Obtaining Superelevation - Two Lane Pavement
225.06	Method of Grading Sight Distance at Intersections
DIVISION 3 - PIPE CULVERTS	
300.01	Method of Pipe Installation - Method 'A'
DIVISION 4 - MAJOR STRUCTURES	
422.10	Reinforced Bridge Approach Fills
DIVISION 6 - ASPHALT BASES AND PAVEMENTS	
654.01	Pavement Repairs
DIVISION 8 - INCIDENTALS	
840.00	Concrete Base Pad for Drainage Structures
840.01	Brick Catch Basin - 12" thru 54" Pipe
840.02	Concrete Catch Basin - 12" thru 54" Pipe
840.03	Frame, Grates and Hood - for Use on Standard Catch Basin
840.14	Concrete Drop Inlet - 12" thru 30" Pipe
840.15	Brick Drop Inlet - 12" thru 30" Pipe
840.16	Drop Inlet Frame and Grates - for use with Std. Dwg 840.14 and 840.15
840.45	Precast Drainage Structure
840.51	Brick Manhole - 12" thru 36" Pipe
840.53	Precast Manhole with Masonry Base - 12" thru 42" Pipe
840.54	Manhole Frame and Cover
840.66	Drainage Structure Steps
846.01	Concrete Curb, Gutter and Curb & Gutter
848.01	Concrete Sidewalk
848.02	Driveway Turnout - Radius Type
848.04	Street Turnout
848.05	Wheelchair Ramp - Curb Cut

REVISIONS

Note: Not to Scale

\*S.U.E. = Subsurface Utility Engineering

STATE OF NORTH CAROLINA DIVISION OF HIGHWAYS

CONVENTIONAL PLAN SHEET SYMBOLS

BOUNDARIES AND PROPERTY:

Table listing symbols for boundaries and property: State Line, County Line, Township Line, City Line, Reservation Line, Property Line, Existing Iron Pin, Property Corner, Property Monument, Parcel/Sequence Number, Existing Fence Line, Proposed Woven Wire Fence, Proposed Chain Link Fence, Proposed Barbed Wire Fence, Existing Wetland Boundary, Proposed Wetland Boundary, Existing High Quality Wetland Boundary, Existing Endangered Animal Boundary, Existing Endangered Plant Boundary.

BUILDINGS AND OTHER CULTURE:

Table listing symbols for buildings and other culture: Gas Pump Vent or U/G Tank Cap, Sign, Well, Small Mine, Foundation, Area Outline, Cemetery, Building, School, Church, Dam.

HYDROLOGY:

Table listing symbols for hydrology: Stream or Body of Water, Hydro, Pool or Reservoir, River Basin Buffer, Flow Arrow, Disappearing Stream, Spring, Swamp Marsh, Proposed Lateral, Tail, Head Ditch, False Sump.

RAILROADS:

Table listing symbols for railroads: Standard Gauge, RR Signal Milepost, Switch, RR Abandoned, RR Dismantled.

RIGHT OF WAY:

Table listing symbols for right of way: Baseline Control Point, Existing Right of Way Marker, Existing Right of Way Line, Proposed Right of Way Line, Proposed Right of Way Line with Iron Pin and Cap Marker, Proposed Right of Way Line with Concrete or Granite Marker, Existing Control of Access, Proposed Control of Access, Existing Easement Line, Proposed Temporary Construction Easement, Proposed Temporary Drainage Easement, Proposed Permanent Drainage Easement, Proposed Permanent Utility Easement.

ROADS AND RELATED FEATURES:

Table listing symbols for roads and related features: Existing Edge of Pavement, Existing Curb, Proposed Slope Stakes Cut, Proposed Slope Stakes Fill, Proposed Wheel Chair Ramp, Curb Cut for Future Wheel Chair Ramp, Existing Metal Guardrail, Proposed Guardrail, Existing Cable Guiderail, Proposed Cable Guiderail, Equality Symbol, Pavement Removal.

VEGETATION:

Table listing symbols for vegetation: Single Tree, Single Shrub, Hedge, Woods Line, Orchard, Vineyard.

EXISTING STRUCTURES:

Table listing symbols for existing structures: MAJOR: Bridge, Tunnel or Box Culvert, Bridge Wing Wall, Head Wall and End Wall; MINOR: Head and End Wall, Pipe Culvert, Footbridge, Drainage Box: Catch Basin, DI or JB, Paved Ditch Gutter, Storm Sewer Manhole, Storm Sewer.

UTILITIES:

Table listing symbols for utilities: POWER: Existing Power Pole, Proposed Power Pole, Existing Joint Use Pole, Proposed Joint Use Pole, Power Manhole, Power Line Tower, Power Transformer, U/G Power Cable Hand Hole, H-Frame Pole, Recorded U/G Power Line, Designated U/G Power Line (S.U.E.\*).

TELEPHONE:

Table listing symbols for telephone: Existing Telephone Pole, Proposed Telephone Pole, Telephone Manhole, Telephone Booth, Telephone Pedestal, Telephone Cell Tower, U/G Telephone Cable Hand Hole, Recorded U/G Telephone Cable, Designated U/G Telephone Cable (S.U.E.\*), Recorded U/G Telephone Conduit, Designated U/G Telephone Conduit (S.U.E.\*), Recorded U/G Fiber Optics Cable, Designated U/G Fiber Optics Cable (S.U.E.\*).

WATER:

Table listing symbols for water: Water Manhole, Water Meter, Water Valve, Water Hydrant, Recorded U/G Water Line, Designated U/G Water Line (S.U.E.\*), Above Ground Water Line.

TV:

Table listing symbols for TV: TV Satellite Dish, TV Pedestal, TV Tower, U/G TV Cable Hand Hole, Recorded U/G TV Cable, Designated U/G TV Cable (S.U.E.\*), Recorded U/G Fiber Optic Cable, Designated U/G Fiber Optic Cable (S.U.E.\*).

GAS:

Table listing symbols for gas: Gas Valve, Gas Meter, Recorded U/G Gas Line, Designated U/G Gas Line (S.U.E.\*), Above Ground Gas Line.

SANITARY SEWER:

Table listing symbols for sanitary sewer: Sanitary Sewer Manhole, Sanitary Sewer Cleanout, U/G Sanitary Sewer Line, Above Ground Sanitary Sewer, Recorded SS Forced Main Line, Designated SS Forced Main Line (S.U.E.\*).

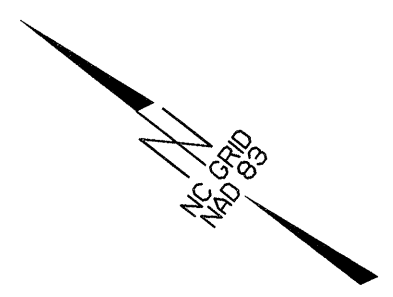
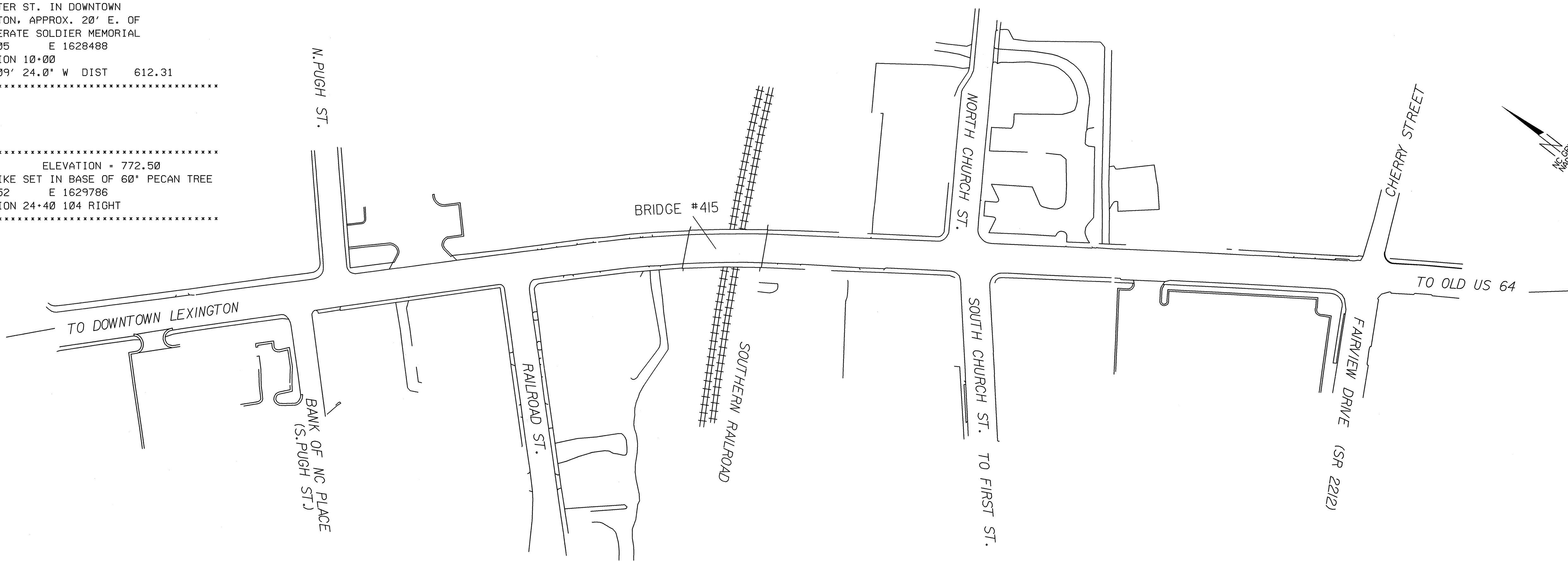
MISCELLANEOUS:

Table listing symbols for miscellaneous: Utility Pole, Utility Pole with Base, Utility Located Object, Utility Traffic Signal Box, Utility Unknown U/G Line, U/G Tank; Water, Gas, Oil, A/G Tank; Water, Gas, Oil, U/G Test Hole (S.U.E.\*), Abandoned According to Utility Records, End of Information.

# SURVEY CONTROL SHEET B-3446

.....  
 BM 110 ELEVATION = 808.44  
 NCGS/USGS 1898, SW QUADRANT OF  
 INTERSECTION OF S. MAIN ST. AND  
 E. CENTER ST. IN DOWNTOWN  
 LEXINGTON, APPROX. 20' E. OF  
 CONFEDERATE SOLDIER MEMORIAL  
 N 757105 E 1628488  
 L STATION 10+00  
 N 51° 09' 24.0" W DIST 612.31  
 .....

.....  
 BM 112 ELEVATION = 772.50  
 R/R SPIKE SET IN BASE OF 60" PECAN TREE  
 N 755552 E 1629786  
 L STATION 24+40 104 RIGHT  
 .....



BL POINT	DESC.	NORTH	EAST	ELEVATION	L STATION	OFFSET
BL-1	BL-1	756872.9045	1628861.9308	797.91	OUTSIDE PROJECT LIMITS	
BL-2	BL-2	756432.5003	1629216.0853	782.23	13+80.42	30.17 RT
BL-3	BL-3	756207.4993	1629487.4815	783.73	17+31.77	13.23 LT
BL-4	BL-4	755979.7810	1629648.6511	778.97	20+09.61	9.39 LT
BL-5	BL-5	755592.7970	1629848.9286	771.19	OUTSIDE PROJECT LIMITS	

BY1 POINT	DESC.	NORTH	EAST	ELEVATION	Y1 STATION	OFFSET
BY-6	BY-6	756605.5010	1629007.5620	784.18	10+51.51	18.63 RT
BL-2	BL-2	756432.5000	1629216.0850	782.23	10+27.86	251.28 LT

BY2 POINT	DESC.	NORTH	EAST	ELEVATION	Y2 STATION	OFFSET
BY-7	BY-7	756659.0470	1629195.7240	788.74	10+44.76	20.27 LT
BL-2	BL-2	756432.5000	1629216.0850	782.23	OUTSIDE PROJECT LIMITS	

BY3 POINT	DESC.	NORTH	EAST	ELEVATION	Y3 STATION	OFFSET
BL-2	BL-2	756432.5000	1629216.0850	782.23	10+30.90	23.47 RT
BY-8	BY-8	756247.6980	1629098.4200	767.43	12+45.01	22.96 LT

BY4 POINT	DESC.	NORTH	EAST	ELEVATION	Y4 STATION	OFFSET
BL-3	BL-3	756207.4990	1629487.4810	783.73	11+61.32	40.84 LT
BY-9	BY-9	756018.6170	1629005.5110	759.98	OUTSIDE PROJECT LIMITS	

BY5 POINT	DESC.	NORTH	EAST	ELEVATION	Y5 STATION	OFFSET
BY-10	BY-10	756157.5170	1629833.2350	763.03	OUTSIDE PROJECT LIMITS	
BL-4	BL-4	755979.7810	1629648.6510	778.97	12+50.21	23.35 LT

BY6 POINT	DESC.	NORTH	EAST	ELEVATION	Y6 STATION	OFFSET
BL-4	BL-4	755979.7810	1629648.6510	778.97	OUTSIDE PROJECT LIMITS	
BY-11	BY-11	755824.1300	1629388.3810	768.74	12+92.67	25.95 RT

**DATUM DESCRIPTION**

THE LOCALIZED COORDINATE SYSTEM DEVELOPED FOR THIS PROJECT  
 IS BASED ON THE STATE PLANE COORDINATES ESTABLISHED BY  
 NCGS FOR MONUMENT "LUMBER"  
 WITH NAD 83 STATE PLANE GRID COORDINATES OF  
 NORTHING: 760812.4548(ft) EASTING: 1625958.2573(ft)  
 THE AVERAGE COMBINED GRID FACTOR USED ON THIS PROJECT  
 (GROUND TO GRID) IS: 0.99989180  
 THE N.C. LAMBERT GRID BEARING  
 LOCALIZED HORIZONTAL GROUND DISTANCE FROM  
 "LUMBER" TO L- STATION 10+00.00 IS  
 S 36° 18' 38" E 5077.42'  
 ALL LINEAR DIMENSIONS ARE LOCALIZED HORIZONTAL DISTANCES  
 VERTICAL DATUM USED IS NGVD 29

**NOTES:**

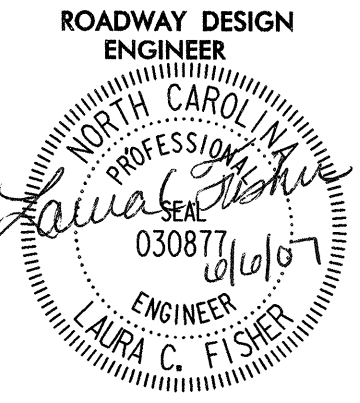
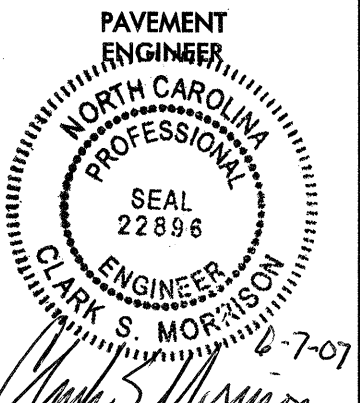
THE CONTROL DATA FOR THIS PROJECT CAN BE FOUND ELECTRONICALLY BY SELECTING  
 PROJECT CONTROL DATA AT:  
[HTTP://WWW.DOH.DOT.STATE.NC.US/PRECONSTRUCT/HIGHWAY/LOCATION/PROJECT](http://www.doh.dot.state.nc.us/preconstruct/highway/location/project)  
 SITE CALIBRATION INFORMATION HAS NOT BEEN PROVIDED FOR THIS PROJECT.  
 IF FURTHER INFORMATION IS NEEDED, PLEASE CONTACT THE LOCATION AND SURVEYS UNIT.

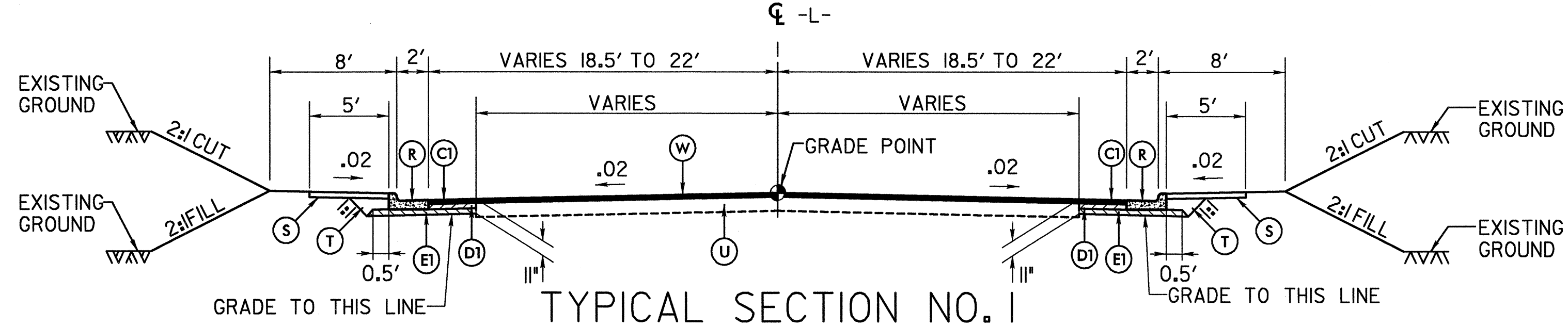
**NOTE: DRAWING NOT TO SCALE**

7/2/99

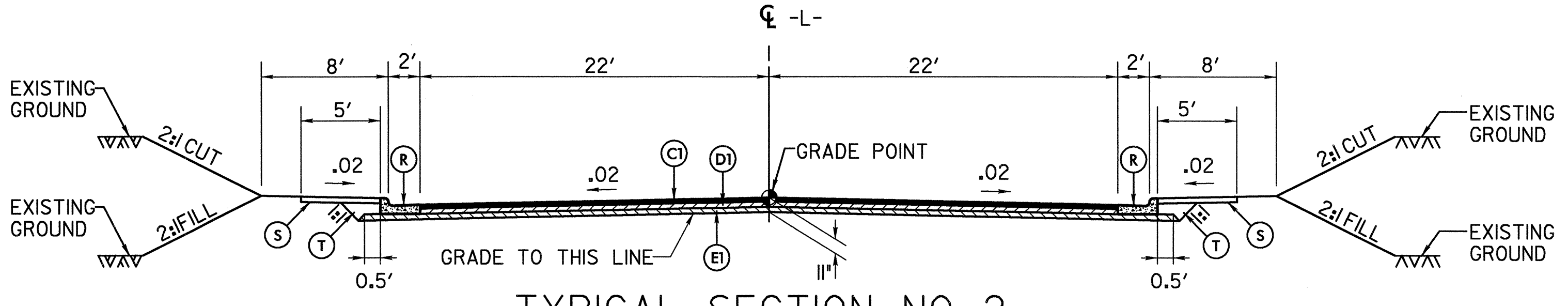


**ARCADIS**  
 G & M of North Carolina, Inc.  
 WWW.ARCADIS-US.COM  
 801 Corporate Center Drive, Suite 300  
 Raleigh, NC 27607-5073  
 Tel: 919/854-1282 Fax: 919/854-5448

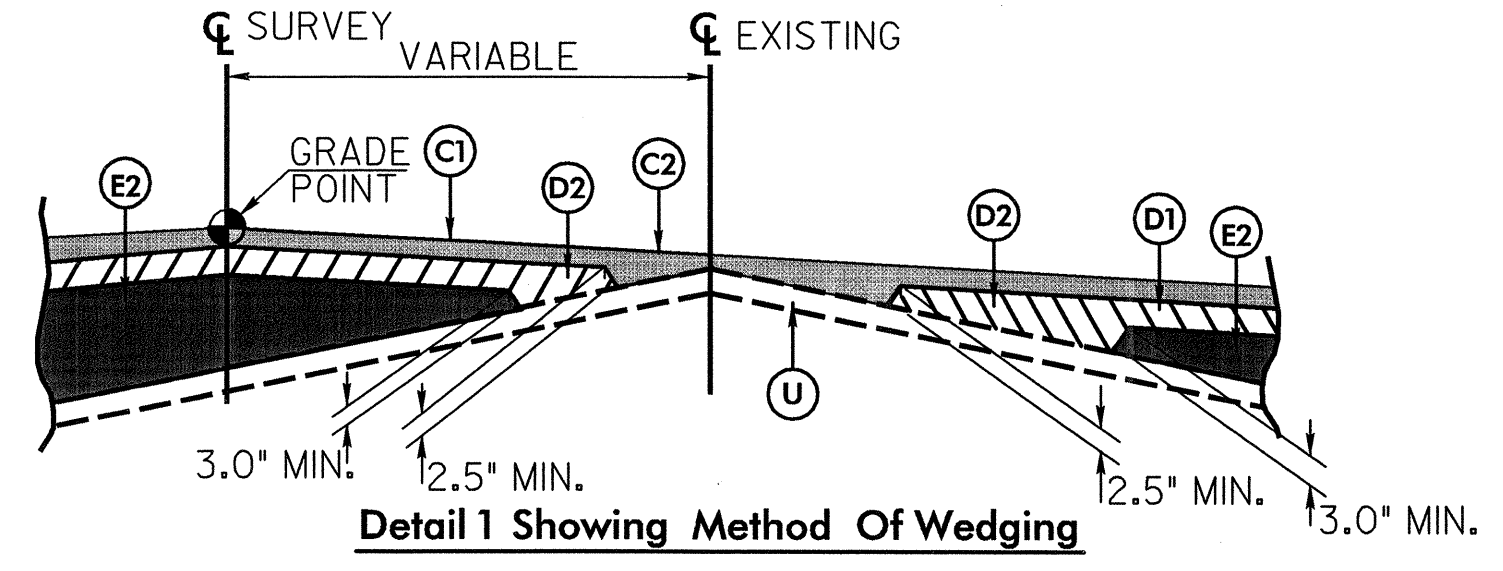
PROJECT REFERENCE NO. <b>B-3446</b>	SHEET NO. <b>2</b>
RW SHEET NO.	
ROADWAY DESIGN ENGINEER  LAURA C. FISHER ENGINEER 030877	PAVEMENT ENGINEER  CLARK S. MORRIS ENGINEER 22896 07-07



**TYPICAL SECTION NO. 1**  
 (USE IN CONJUNCTION WITH WEDGING DETAIL 1)  
 -L- STA. 12+15.00 TO -L- STA. 14+35.00  
 -L- STA. 19+45.00 TO -L- STA. 24+00.00



**TYPICAL SECTION NO. 2**  
 -L- STA. 14+35.00 TO -L- STA. 16+29.42 (BRIDGE)  
 -L- STA. 17+41.56 (BRIDGE) TO -L- STA. 19+45.00



**PAVEMENT SCHEDULE**

CODE	DESCRIPTION
C1	PROP. APPROX. 3.0" ASPHALT CONC. SURFACE COURSE, TYPE S9.5B, AT AN AVERAGE RATE OF 168 LBS. PER SQ. YD. IN EACH OF TWO LAYERS.
C2	PROP. VAR. DEPTH ASPHALT CONC. SURFACE COURSE, TYPE S9.5B, AT AN AVERAGE RATE OF 112 LBS. PER SQ. YD. PER 1" DEPTH TO BE PLACED IN LAYERS NOT LESS THAN 1.5" OR GREATER THAN 2.0" IN DEPTH.
D1	PROP. APPROX. 4.0" ASPHALT CONC. INTERMEDIATE COURSE, TYPE I19.0B, AT AN AVERAGE RATE OF 456 LBS. PER SQ. YD.
D2	PROP. VAR. DEPTH ASPHALT CONC. INTERMEDIATE COURSE, TYPE I19.0B, AT AN AVERAGE RATE OF 114 LBS. PER SQ. YD. PER 1" DEPTH TO BE PLACED IN LAYERS NOT LESS THAN 2 1/2" OR GREATER THAN 4" IN DEPTH.
E1	PROP. APPROX. 4.0" ASPHALT CONC. BASE COURSE, TYPE B25.0B, AT AN AVERAGE RATE OF 456 LBS. PER SQ. YD.
E2	PROP. VAR. DEPTH ASPHALT CONC. BASE COURSE, TYPE B25.0B, AT AN AVERAGE RATE OF 114 LBS. PER SQ. YD. PER 1" DEPTH TO BE PLACED IN LAYERS NOT LESS THAN 3" OR GREATER THAN 5 1/2" IN DEPTH.
R	2'-6" CONCRETE CURB AND GUTTER
S	4" CONCRETE SIDEWALK
T	EARTH MATERIAL
U	EXISTING PAVEMENT
W	VARIABLE DEPTH ASPHALT PAVEMENT (SEE WEDGING DETAILS)

Note: Pavement Edge Slopes are 1:1 Unless Shown Otherwise

REVISIONS

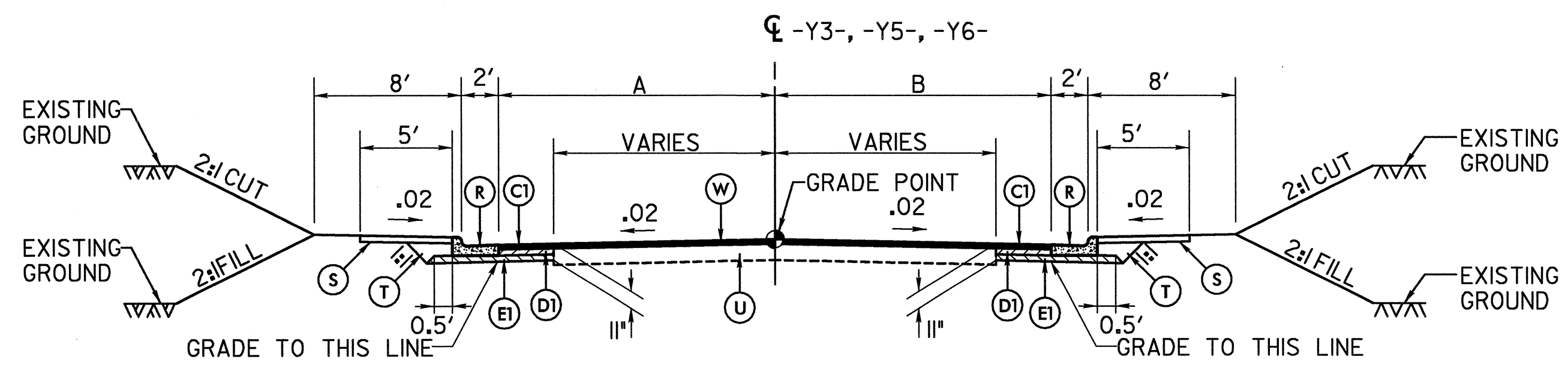
ARCADIS\_GM  
 Dct166/5/2007  
 File:arcadis\roadway\proj\B3446\_rdy.tpd.dgn

7/2/99



**ARCADIS**  
 G & M of North Carolina, Inc.  
 WWW.ARCADIS-US.COM  
 801 Corporate Center Drive, Suite 300  
 Raleigh, NC 27607-5073  
 Tel: 919/854-1282 Fax: 919/854-5448

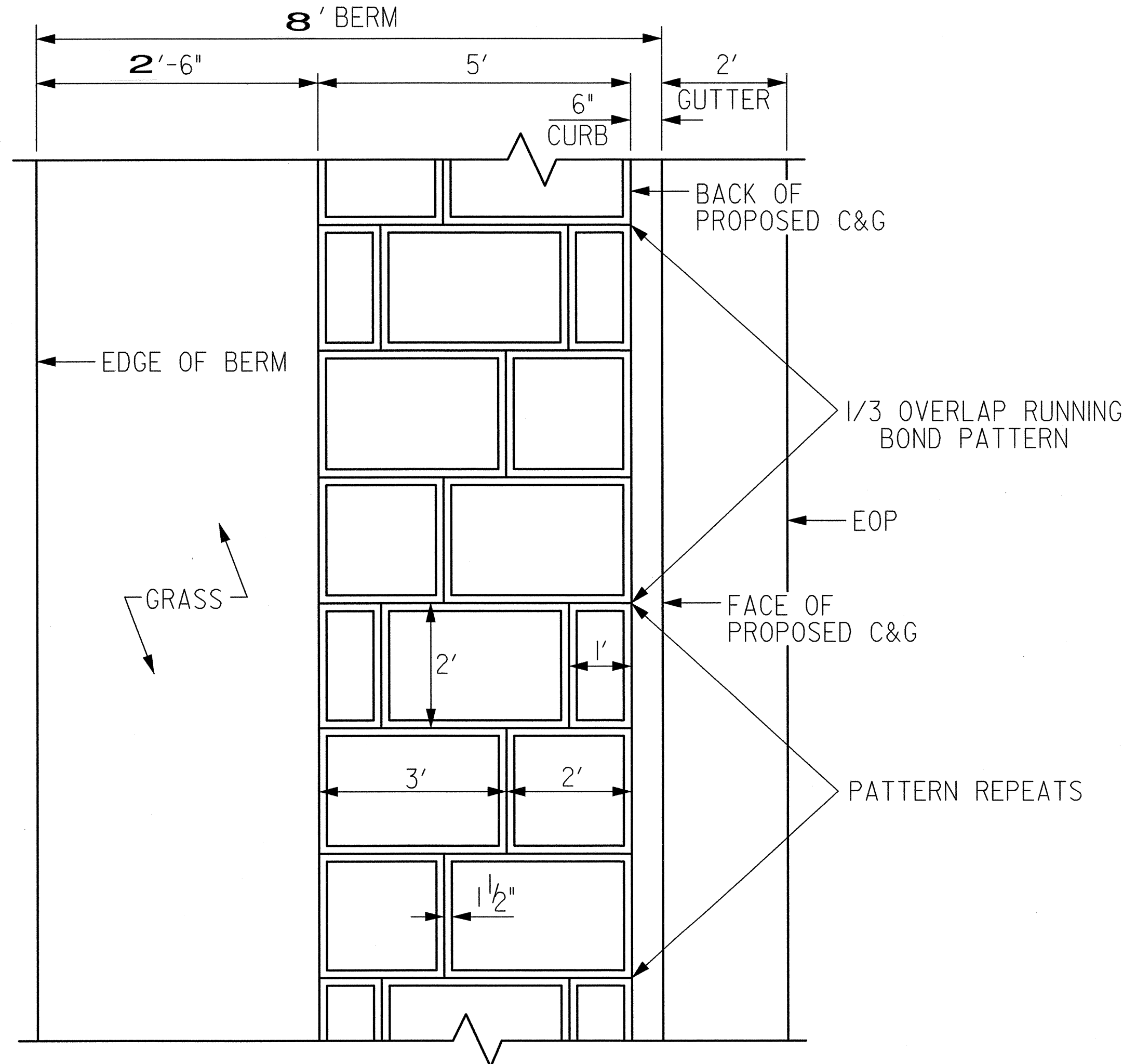
PROJECT REFERENCE NO. <b>B-3446</b>	SHEET NO. <b>2A</b>
RW SHEET NO.	
ROADWAY DESIGN ENGINEER <i>Laura C. Fisher</i> SEAL 0308177	PAVEMENT ENGINEER <i>Clark S. Morrison</i> SEAL 22896
SEAL NOT VALID UNLESS SIGNED AND DATED	



**TYPICAL SECTION NO. 3**

(USE IN CONJUNCTION WITH WEDGING DETAIL 2)

LINE	STATION USAGE	DIMENSION 'A'	DIMENSION 'B'
-Y3-	STA. 10+22.01 TO STA. 11+31.00	VARIES 13.5' TO 15'	VARIES 13.5' TO 15'
-Y5-	STA. 11+45.00 TO STA. 12+34.64	VARIES 9.5' TO 11'	VARIES 22' TO 22.7'
-Y6-	STA. 10+22.16 TO STA. 11+30.00	16.5'	16.5'



**STAMPED CONC. SIDEWALK DETAIL**  
(N.T.S.)

NOTE: SEE SPECIAL PROVISIONS

CODE	
C1	3.0" TYPE S9.5B
C2	VAR. DEPTH, TYPE S9.5B
D1	4.0", TYPE I19.0B
D2	VAR. DEPTH, TYPE I19.0B
E1	4.0", TYPE B25.0B
E2	VAR. DEPTH, TYPE B25.0B
R	2' 6" CONC. CURB & GUTTER
S	4" CONC. SIDEWALK
T	EARTH MATERIAL
U	EXISTING PAVEMENT
W	VAR. DEPTH ASPHALT PAVEMENT

Note: Pavement Edge Slopes are 1:1 Unless Shown Otherwise

REVISIONS

ARCADIS G&M  
 Date: 6/5/2007 Time: 8:36:48 AM  
 Filename: r:\roadway\p01\B3446\_r01.dwg

STATE OF NORTH CAROLINA  
DIVISION OF HIGHWAYS  
**SUMMARY OF QUANTITIES**



**ARCADIS**  
G & M of North Carolina, Inc.  
WWW.ARCADIS-US.COM  
801 Corporate Center Drive, Suite 300  
Raleigh, NC 27607-5073  
Tel: 919/854-1282 Fax: 919/854-5448

STATE OF NORTH CAROLINA  
DIVISION OF HIGHWAYS  
ROADWAY SUMMARY OF QUANTITIES FOR CONTRACT - C201604

ItemNumber	Sec #	Quantity	Unit	Description
000010000-N	800	Lump Sum		MOBILIZATION
002900000-N	SP	Lump Sum		REINFORCED BRIDGE APPROACH FILL, STATION ***** (16+85.49)
004300000-N	226	Lump Sum		GRADING
005000000-E	226	1	ACR	SUPPLEMENTARY CLEARING & GRUB-BING
005700000-E	226	500	CY	UNDERCUT EXCAVATION
008000000-E	SP	100	TON	CLASS IV SUBGRADE STABILIZATION
010600000-E	230	4,000	CY	BORROW EXCAVATION
019600000-E	270	250	SY	FABRIC FOR SOIL STABILIZATION
031800000-E	300	60	TON	FOUNDATION CONDITIONING MATERIAL, MINOR STRS
037200000-E	310	168	LF	18" RC PIPE CULVERTS, CLASS III
099500000-E	340	61	LF	PIPE REMOVAL
122000000-E	545	10	TON	INCIDENTAL STONE BASE
133000000-E	607	200	SY	INCIDENTAL MILLING
148900000-E	610	1,020	TON	ASPHALT CONC BASE COURSE, TYPE B25.0B
149800000-E	610	1,020	TON	ASPHALT CONC INTERMEDIATE COURSE, TYPE I19.0B
151900000-E	610	1,100	TON	ASPHALT CONC SURFACE COURSE, TYPE S9.5B
156000000-E	620	180	TON	ASPHALT BINDER FOR PLANT MIX, GRADE PG 64-22
169300000-E	654	60	TON	ASPHALT PLANT MIX, PAVEMENT REPAIR
228600000-N	840	10	EA	MASONRY DRAINAGE STRUCTURES
230800000-E	840	3.82	LF	MASONRY DRAINAGE STRUCTURES
236400000-N	840	3	EA	FRAME WITH TWO GRATES, STD 840.16
237400000-N	840	2	EA	FRAME WITH GRATE & HOOD, STD 840.03, TYPE ** (E)
237400000-N	840	2	EA	FRAME WITH GRATE & HOOD, STD 840.03, TYPE ** (F)
237400000-N	840	2	EA	FRAME WITH GRATE & HOOD, STD 840.03, TYPE ** (G)
239600000-N	840	1	EA	FRAME WITH COVER, STD 840.54
253500000-E	846	300	LF	***X*** CONCRETE CURB (8" X 18")
254900000-E	846	2,460	LF	2'-6" CONCRETE CURB & GUTTER
259100000-E	848	1,340	SY	4" CONCRETE SIDEWALK
260500000-N	848	17	EA	CONCRETE WHEELCHAIR RAMPS
261200000-E	848	260	SY	6" CONCRETE DRIVEWAY
273800000-E	SP	1,340	SY	GENERIC PAVING ITEM STAMPED CONCRETE SIDEWALK
365600000-E	876	150	SY	FILTER FABRIC FOR DRAINAGE
402500000-E	901	26.25	SF	CONTRACTOR FURNISHED, TYPE *** SIGN (E)
407200000-E	903	65	LF	SUPPORTS, 3-LB STEEL U-CHANNEL
410200000-N	904	5	EA	SIGN ERECTION, TYPE E
415500000-N	907	6	EA	DISPOSAL OF SIGN SYSTEM, U-CHANNEL
440000000-E	1110	636	SF	WORK ZONE SIGNS (STATIONARY)
440500000-E	1110	288	SF	WORK ZONE SIGNS (PORTABLE)
441000000-E	1110	208	SF	WORK ZONE SIGNS (BARRICADE MOUNTED)
441500000-N	1115	2	EA	FLASHING ARROW PANELS, TYPE C
442000000-N	1120	2	EA	CHANGEABLE MESSAGE SIGN
443000000-N	1130	30	EA	DRUMS
443500000-N	1135	10	EA	CONES
444500000-E	1145	168	LF	BARRICADES (TYPE III)
445000000-N	1150	480	HR	FLAGGER
448000000-N	1165	2	EA	TMIA

ItemNumber	Sec #	Quantity	Unit	Description
465000000-N	1251	30	EA	TEMPORARY RAISED PAVEMENT MARKERS
468600000-E	1205	3,780	LF	THERMOPLASTIC PAVEMENT MARKING LINES (4", 120 MILS)
469700000-E	1205	300	LF	THERMOPLASTIC PAVEMENT MARKING LINES (8", 120 MILS)
471000000-E	1205	100	LF	THERMOPLASTIC PAVEMENT MARKING LINES (24", 120 MILS)
472500000-E	1205	14	EA	THERMOPLASTIC PAVEMENT MARKING SYMBOL (90 MILS)
477000000-E	1205	280	LF	COLD APPLIED PLASTIC PAVEMENT MARKING LINES, TYPE ** (4") (III)
480500000-N	1205	2	EA	COLD APPLIED PLASTIC PAVEMENT MARKING SYMBOL, TYPE ** (III)
481000000-E	1205	12,999	LF	PAINT PAVEMENT MARKING LINES (4")
482000000-E	1205	600	LF	PAINT PAVEMENT MARKING LINES (8")
483500000-E	1205	260	LF	PAINT PAVEMENT MARKING LINES (24")
484000000-N	1205	32	EA	PAINT PAVEMENT MARKING CHARACTER
484500000-N	1205	32	EA	PAINT PAVEMENT MARKING SYMBOL
485000000-E	1205	1,500	LF	REMOVAL OF PAVEMENT MARKING LINES (4")
487500000-N	1205	4	EA	REMOVAL OF PAVEMENT MARKING SYMBOLS & CHARACTERS
490000000-N	1251	4	EA	PERMANENT RAISED PAVEMENT MARKERS
490500000-N	1253	20	EA	SNOWBLOWABLE PAVEMENT MARKERS
532560000-E	1510	64	LF	6" WATER LINE
564800000-N	1515	13	EA	RELOCATE WATER METER
566600000-E	1515	2	EA	FIRE HYDRANT
567200000-N	1515	1	EA	RELOCATE FIRE HYDRANT
577500000-E	1525	1	EA	4" DIA UTILITY MANHOLE
578100000-E	1525	3	LF	UTILITY MANHOLE WALL, 4" DIA
580000000-E	1530	348	LF	ABANDON 6" UTILITY PIPE
580100000-E	1530	115	LF	ABANDON 8" UTILITY PIPE
582800000-N	1530	1	EA	REMOVE UTILITY MANHOLE
600000000-E	1605	2,200	LF	TEMPORARY SILT FENCE
600600000-E	1610	75	TON	STONE FOR EROSION CONTROL, CLASS A
600900000-E	1610	85	TON	STONE FOR EROSION CONTROL, CLASS B
601200000-E	1610	85	TON	SEDIMENT CONTROL STONE
601500000-E	1615	0.5	ACR	TEMPORARY MULCHING
601800000-E	1620	50	LB	SEED FOR TEMPORARY SEEDING
602100000-E	1620	0.25	TON	FERTILIZER FOR TEMPORARY SEEDING
603000000-E	1630	100	CY	SILT EXCAVATION
603600000-E	1631	700	SY	MATTING FOR EROSION CONTROL
604200000-E	1632	250	LF	1/4" HARDWARE CLOTH
608400000-E	1660	1	ACR	SEEDING & MULCHING
608700000-E	1660	0.5	ACR	MOWING
609000000-E	1661	50	LB	SEED FOR REPAIR SEEDING
609300000-E	1661	0.25	TON	FERTILIZER FOR REPAIR SEEDING
609600000-E	1662	50	LB	SEED FOR SUPPLEMENTAL SEEDING
610800000-E	1665	0.75	TON	FERTILIZER TOPDRESSING
611400000-N	SP	2	HR	SPECIALIZED HAND MOWING
611700000-N	SP	8	EA	RESPONSE FOR EROSION CONTROL
706000000-E	1705	490	LF	SIGNAL CABLE
712000000-E	1705	8	EA	VEHICLE SIGNAL HEAD (12", 3 SECTION)
725200000-E	1710	90	LF	MESSENGER CABLE (1/4")
726400000-E	1710	600	LF	MESSENGER CABLE (3/8")
727900000-E	1715	540	LF	TRACER WIRE
728800000-E	1715	10	LF	PAVED TRENCHING (***** (1 CONDUIT, 2")

ItemNumber	Sec #	Quantity	Unit	Description
730000000-E	1715	290	LF	UNPAVED TRENCHING (***** (1 CONDUIT, 2")
730100000-E	1715	160	LF	DIRECTIONAL DRILL (***** (1 CONDUIT, 2")
732400000-N	1716	2	EA	JUNCTION BOX (STANDARD SIZE)
734800000-N	1716	5	EA	JUNCTION BOX (OVER-SIZED, HEAVY DUTY)
737200000-N	1721	2	EA	GUY ASSEMBLY
740800000-E	1722	1	EA	1" RISER WITH WEATHERHEAD
742000000-E	1722	2	EA	2" RISER WITH WEATHERHEAD
743200000-E	1722	2	EA	2" RISER WITH HEAT SHRINK TUBING
744400000-E	1725	600	LF	INDUCTIVE LOOP SAWCUT
745600000-E	1726	280	LF	LEAD-IN CABLE (***** (18-2)
751600000-E	1730	860	LF	COMMUNICATIONS CABLE (**FIBER) (12)
754000000-N	1731	1	EA	SPLICE ENCLOSURE
755200000-N	1731	1	EA	INTERCONNECT CENTER
756600000-N	1733	2	EA	DELINEATOR MARKER
757400000-N	SP	1	EA	FURNISH FIBER-OPTIC TRANSCEIVER
757516000-E	1734	700	LF	REMOVE EXISTING COMMUNICATIONS CABLE
768400000-N	1750	1	EA	SIGNAL CABINET FOUNDATION
775600000-N	1751	1	EA	CONTROLLER WITH CABINET (TYPE 2070L, BASE MOUNTED)
778000000-N	1751	2	EA	DETECTOR CARD (TYPE 2070L)
790100000-N	1753	1	EA	CABINET BASE EXTENDER

***** BEGIN SCHEDULE AA ***** (3 ALTERNATES)				
036000000-E	310	12	LF	12" RC PIPE CULVERTS, CLASS III
AA1				
036600000-E	310	344	LF	15" RC PIPE CULVERTS, CLASS III
AA1				
*** OR ***				
036600000-E	310	324	LF	15" RC PIPE CULVERTS, CLASS III
AA2				
053600000-E	SP	12	LF	*** HDPE PIPE CULVERTS (12")
AA2				
053600000-E	SP	20	LF	*** HDPE PIPE CULVERTS (15")
AA2				
*** OR ***				
036600000-E	310	324	LF	15" RC PIPE CULVERTS, CLASS III
AA3				
054000000-E	SP	12	LF	*** ALUMINIZED CORRUGATED STEEL PIPE CULVERTS, *** THICK (12", 0.064")
AA3				
054000000-E	SP	20	LF	*** ALUMINIZED CORRUGATED STEEL PIPE CULVERTS, *** THICK (15", 0.064")
AA3				
***** END SCHEDULE AA *****				





COMPUTED BY: BMP DATE: 5/06/04  
 CHECKED BY: LCF DATE: 3/31/05

PROJECT NO. B-3446 SHEET NO. 3-B

NCL-LFISHER

## STATE OF NORTH CAROLINA DIVISION OF HIGHWAYS

### SUMMARY OF EARTHWORK

Station	Station	Uncl. Excav.	Undercut Excav.	Embank. + %	Borrow	Waste
<b>SUMMARY #1</b>						
-L-						
12+15.00	16+29.42	41		2614	2573	
-Y3-						
10+22.19	11+31.00	15		42	27	
<b>TOTAL SUMMARY #1</b>		56		2656	2600	
<b>SUMMARY #2</b>						
-L-						
17+41.56	24+00.00	354		1446	1092	
-Y5-						
11+45.00	12+00.00	11		39	28	
-Y6-						
10+33.65	11+30.00	18		18		
<b>TOTAL SUMMARY #2</b>		383		1503	1120	
<b>SUBTOTAL SUMMARY #1 &amp; #2</b>		439		4159	3720	
<b>PROJECT TOTALS</b>		439		4159	3720	
<b>EST. 5% TO REPLACE TOPSOIL ON BORROW PIT</b>					186	
<b>GRAND TOTALS</b>		439		4159	3906	
<b>SAY</b>		500			4000	

### SUMMARY OF EXISTING ASPHALT PAVEMENT REMOVAL

LINE	Station	Station	LOC LT/RT/CL	SY
L	12+15.00	12+56.30	LT	5
L	12+15.00	13+79.06	RT	7
Y3	10+34.65	11+31.00	RT	13
Y3	10+28.56	11+31.00	LT	12
L	14+28.60	15+41.77	RT	23
L	15+41.77	16+25.76	CL	333
L	17+25.97	18+30.53	CL	435
L	18+30.53	19+67.10	RT	242
Y5	11+45.00	12+26.49	RT	29
Y5	11+45.00	11+97.71	LT	7
Y6	10+45.44	11+30.00	RT	19
Y6	10+50.20	11+30.00	LT	17
L	20+02.45	21+90.97	RT	185
L	23+10.76	24+00.00	RT	10
L	23+51.86	24+00.00	LT	5
<b>TOTAL:</b>				1342
<b>SAY:</b>				1350

### SUMMARY OF BREAKING EXISTING ASPHALT PAVEMENT

LINE	Station	Station	LOC LT/RT/CL	SY
L	14+35.00	15+41.77	CL	412
L	18+30.53	19+45.00	RT	274
<b>TOTAL:</b>				686
<b>SAY:</b>				690

NOTE: APPROXIMATE QUANTITIES ONLY. UNCLASSIFIED EXCAVATION, FINE GRADING, CLEARING AND GRUBBING, AND REMOVAL AND BREAKING OF EXISTING PAVEMENT WILL BE PAID FOR AT THE CONTRACT LUMP SUM PRICE FOR "GRADING".

### PARCEL INDEX

PARCEL No.	SHEET No.	PROPERTY OWNER NAME
1	4	PEOPLES FINANCE CO. OF LEXINGTON, INC.
2	4	SHADY SIDE PRESBYTERIAN CHURCH
3	4	CITY OF LEXINGTON
4	4	GARY & KATHRYN WOLFE
5	4	TIMOTHY H. COATES
6	4	DAN WEBB, INC.
7	4	J.M. & LETHA MORGAN
8	4	ROBERT W. CLINARD
9	4	SOUTHERN RAILROAD
10	4	SALEM BRASS INC.
11	4	HALE M. SMITH
12	4 & 5	GARNER REALTY INC
13	4 & 5	J.H. LIMITED PARTNERSHIP
14	5	DAVIDSON COUNTY
15	5	SMITH, SMITH SMITH & SMITH
16	5	DENNIS & SHERRY BAILEY
17	5	LEXINGTON ASSOC., LLC
18	5	SMITH, SMITH, SMITH, & SMITH

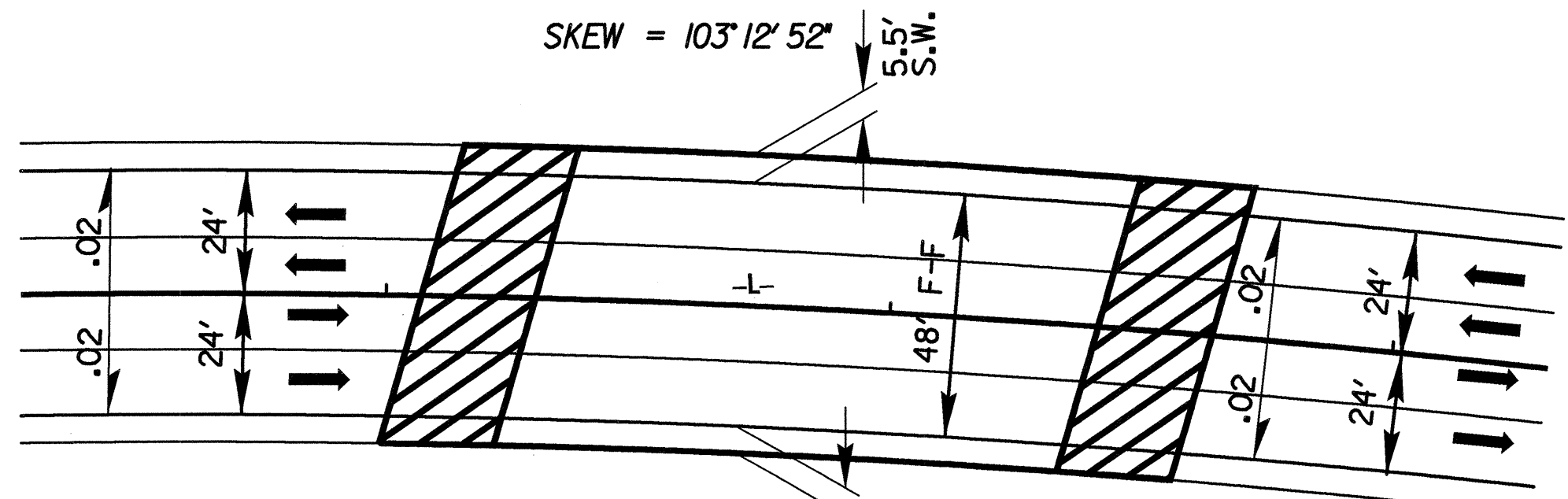
7/2/99



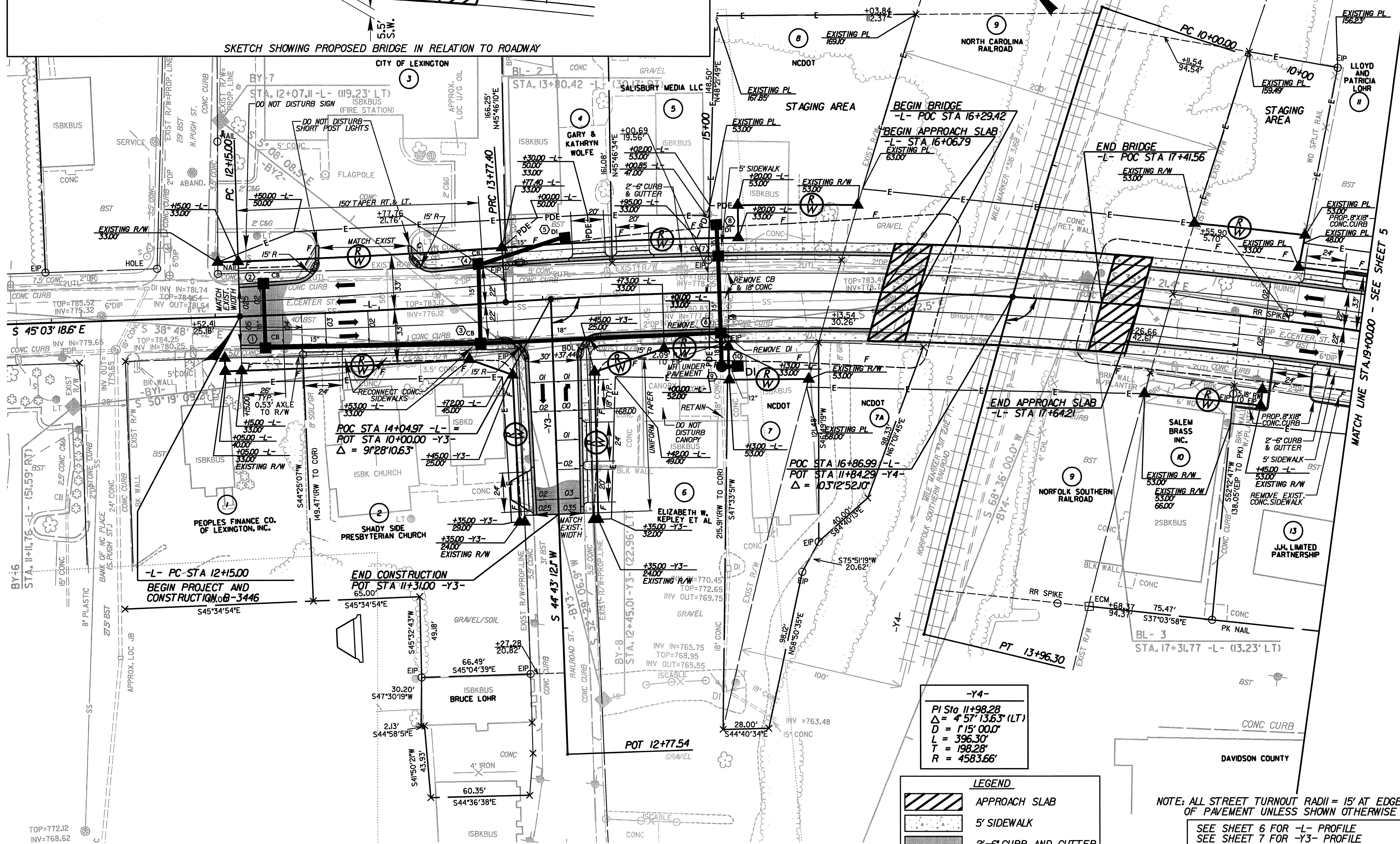
G & M of North Carolina, Inc.  
WWW.ARCADIS-US.COM  
801 Corporate Center Drive, Suite 300  
Raleigh, NC 27607-5073  
Tel: 919/854-1282 Fax: 919/854-5448

PROJECT REFERENCE NO. <b>B-3446</b>	SHEET NO. <b>4</b>
RW SHEET NO.	
ROADWAY DESIGN ENGINEER L. C. FISHER Professional Engineer No. 030811 Seal No. 030811	HYDRAULICS ENGINEER M. S. PHILLIPS Professional Engineer No. 030811 Seal No. 030811

-L-	-L-
PI Sta 12+96.21	PI Sta 17+52.65
$\Delta = 2'19"34.6"$ (LT)	$\Delta = 17'04"21.0"$ (RT)
$D = 1'25"56.6"$	$D = 2'17"30.6"$
$L = 162.40'$	$L = 744.93'$
$T = 81.21'$	$T = 375.24'$
$R = 4,000.00'$	$R = 2,500.00'$
SE = NC	SE = NC
DS = 25MPH	DS = 25MPH



SKETCH SHOWING PROPOSED BRIDGE IN RELATION TO ROADWAY



-Y4-
PI Sta 11+98.28
$\Delta = 4'57"13.63"$ (LT)
$D = 1'15"00.0"$
$L = 396.30'$
$T = 198.28'$
$R = 4583.66'$

**LEGEND**

	APPROACH SLAB
	5' SIDEWALK
	2'-6" CURB AND GUTTER

NOTE: ALL STREET TURNOUT RADII = 15' AT EDGE OF PAVEMENT UNLESS SHOWN OTHERWISE

SEE SHEET 6 FOR -L- PROFILE  
SEE SHEET 7 FOR -Y3- PROFILE  
SEE SHEETS S1 THRU S30 FOR STRUCTURE DESIGN  
SEE SHEET 2A FOR SCORED CONC. SIDEWALK DETAIL

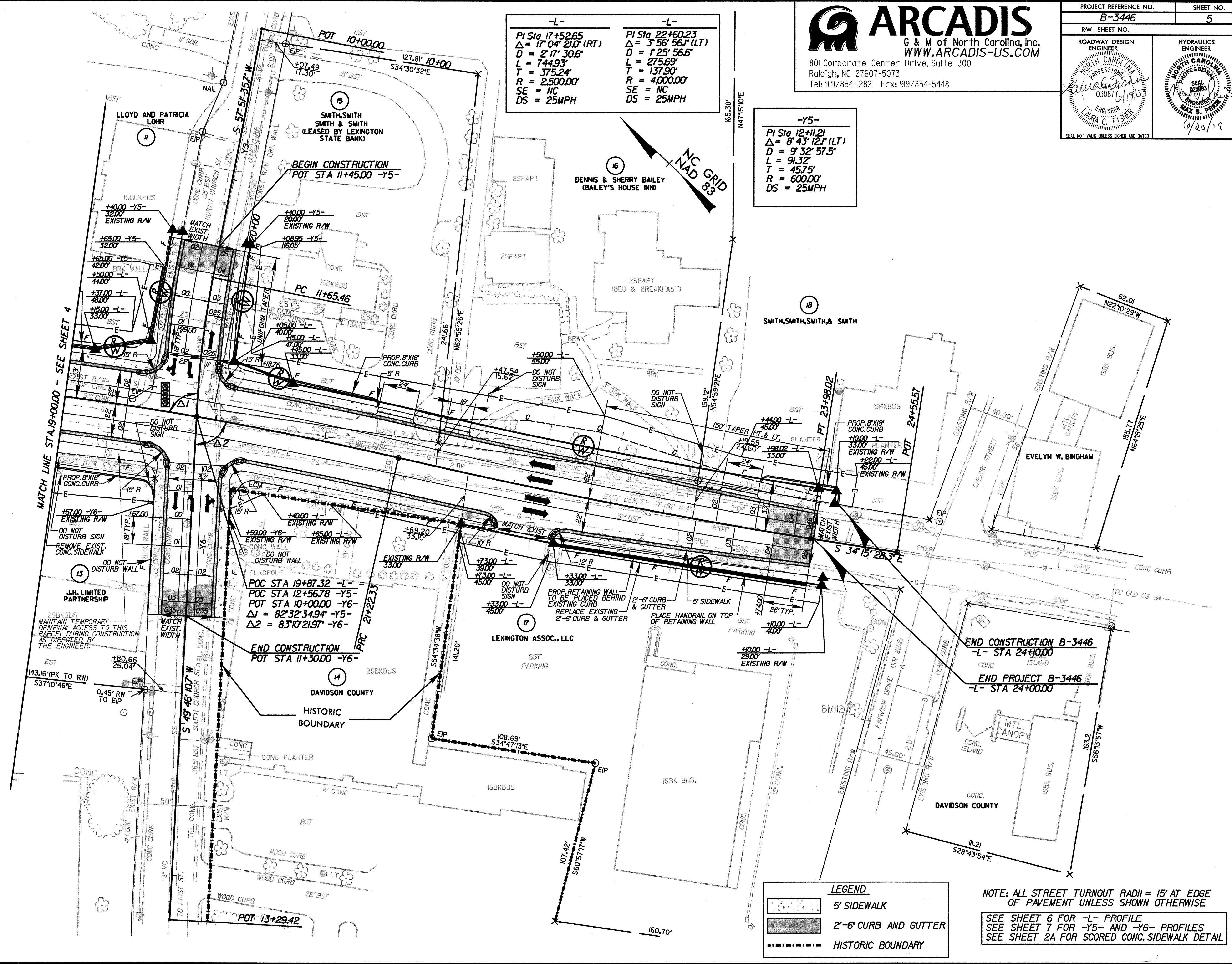
REVISIONS

ARCADIS G&M  
7/2/07 Time: 8:35:49 AM  
Filename: C:\Roadway\B3446\c3446.dwg - dyl\_psh-e04.dgn

TOP=772.12  
INV=768.62

MATCH LINE STA 19+00.00 - SEE SHEET 5

REVISIONS



**-L-**  
PI Sta 17+52.65  
 $\Delta = 17^{\circ}04'21.0''$  (RT)  
D = 2'17'30.6"  
L = 744.93'  
T = 375.24'  
R = 2,500.00'  
SE = NC  
DS = 25MPH

**-L-**  
PI Sta 22+60.23  
 $\Delta = 3^{\circ}56'56.6''$  (LT)  
D = 1'25'56.6"  
L = 275.69'  
T = 137.90'  
R = 4,000.00'  
SE = NC  
DS = 25MPH

**-Y5-**  
PI Sta 12+11.21  
 $\Delta = 8^{\circ}43'12.1''$  (LT)  
D = 9'32'57.5"  
L = 91.32'  
T = 45.75'  
R = 600.00'  
DS = 25MPH

POC STA 19+87.32 -L-  
POC STA 12+56.78 -Y5-  
POT STA 10+00.00 -Y6-  
 $\Delta 1 = 82^{\circ}32'34.94''$  -Y5-  
 $\Delta 2 = 83^{\circ}10'21.97''$  -Y6-  
END CONSTRUCTION  
POT STA 11+30.00 -Y6-

**LEGEND**

- 5' SIDEWALK
- 
- HISTORIC BOUNDARY

NOTE: ALL STREET TURNOUT RADII = 15' AT EDGE OF PAVEMENT UNLESS SHOWN OTHERWISE

SEE SHEET 6 FOR -L- PROFILE  
SEE SHEET 7 FOR -Y5- AND -Y6- PROFILES  
SEE SHEET 2A FOR SCORED CONC. SIDEWALK DETAIL

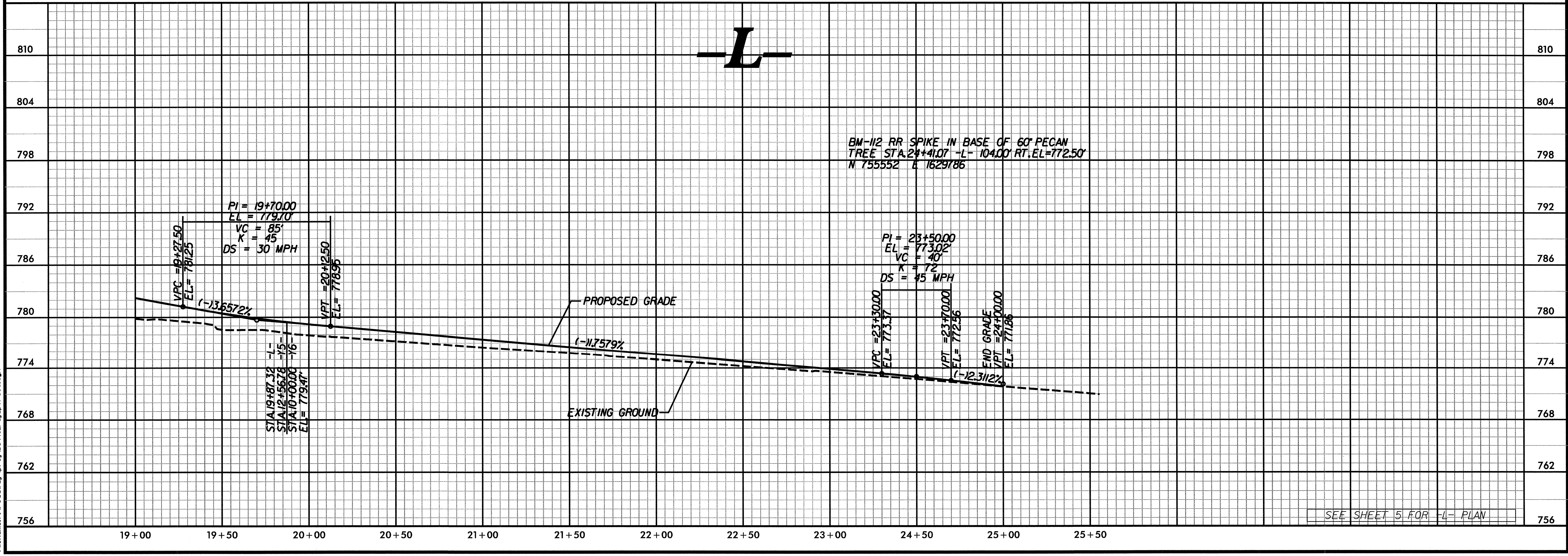
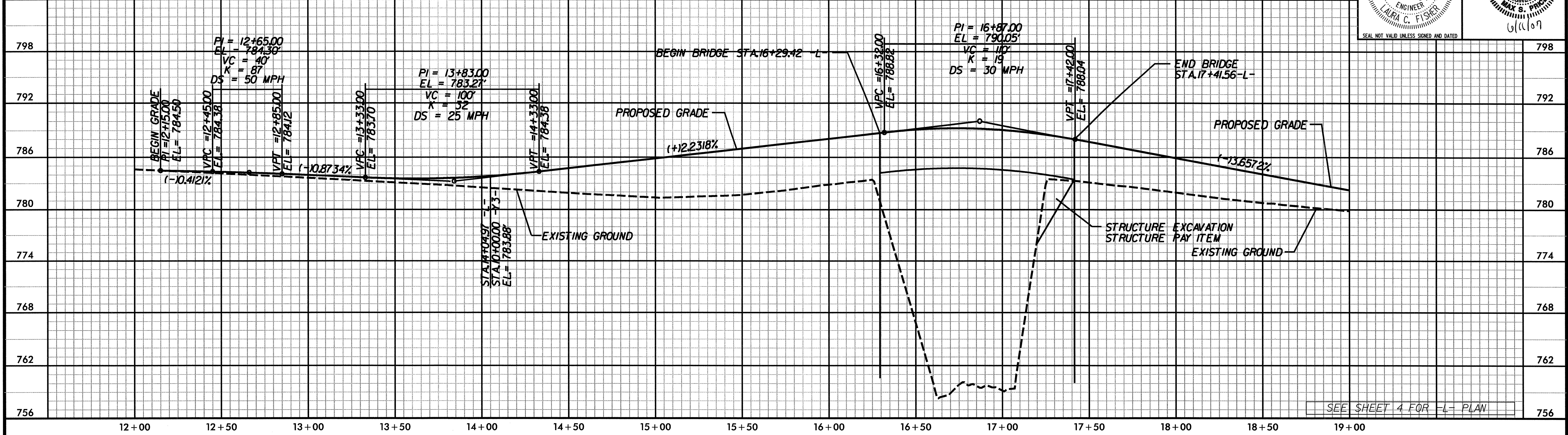
5/28/99

BM-110 CONCRETE MON. STAMPED NCGS/USGS 1898, SW QUADRANT OF INTERSECTION OF S. MAIN ST. AND E. CENTER ST. IN DOWNTOWN LEXINGTON, APPROX. 20' EAST FROM CONFEDERATE SOLDIER MEMORIAL N 757105 E 1628488 EL=808.44'

-L-

**ARCADIS**  
 G & M of North Carolina, Inc.  
 WWW.ARCADIS-US.COM  
 801 Corporate Center Drive, Suite 300  
 Raleigh, NC 27607-5073  
 Tel: 919/854-1282 Fax: 919/854-5448

PROJECT REFERENCE NO. <b>B-3446</b>	SHEET NO. <b>6</b>
ROADWAY DESIGN ENGINEER <i>Laura C. Fisher</i>	HYDRAULICS ENGINEER <i>Max S. Price</i>
SEAL NOT VALID UNLESS SIGNED AND DATED	6/1/07



ARCADIS G&M Date: 6/7/2007 Time: 2:05:17 PM Filename: r:\roadway\3446\3446\_rdy.dwg

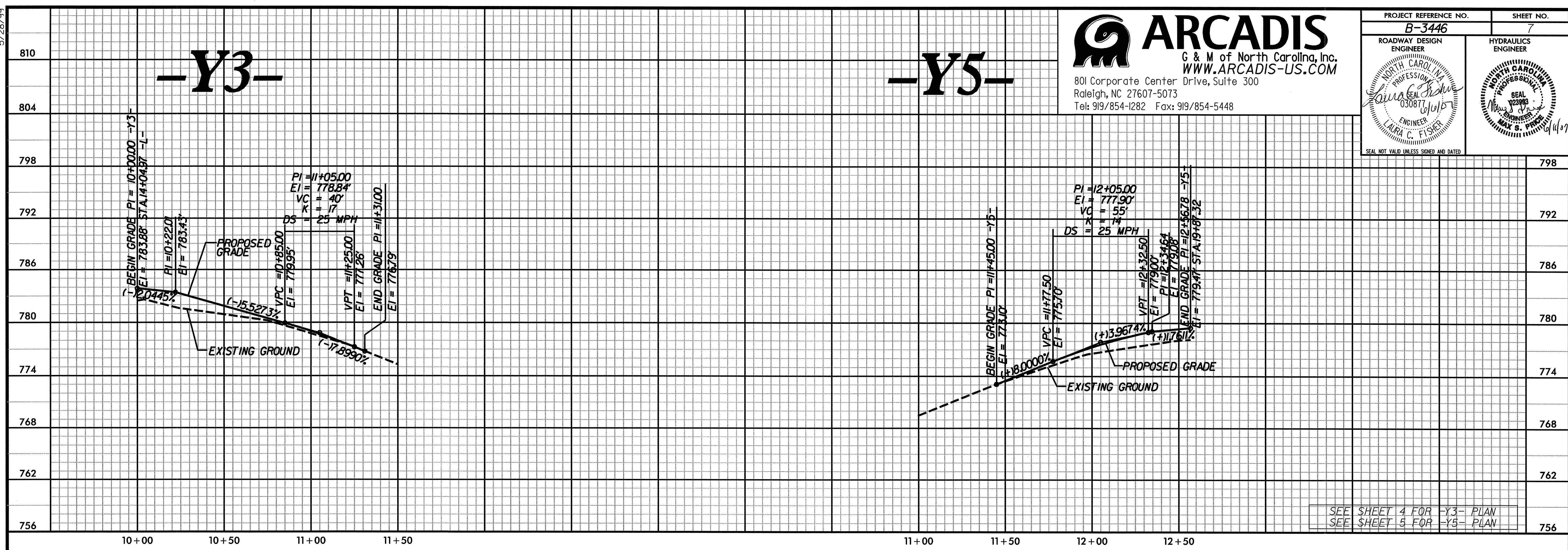
5/28/99



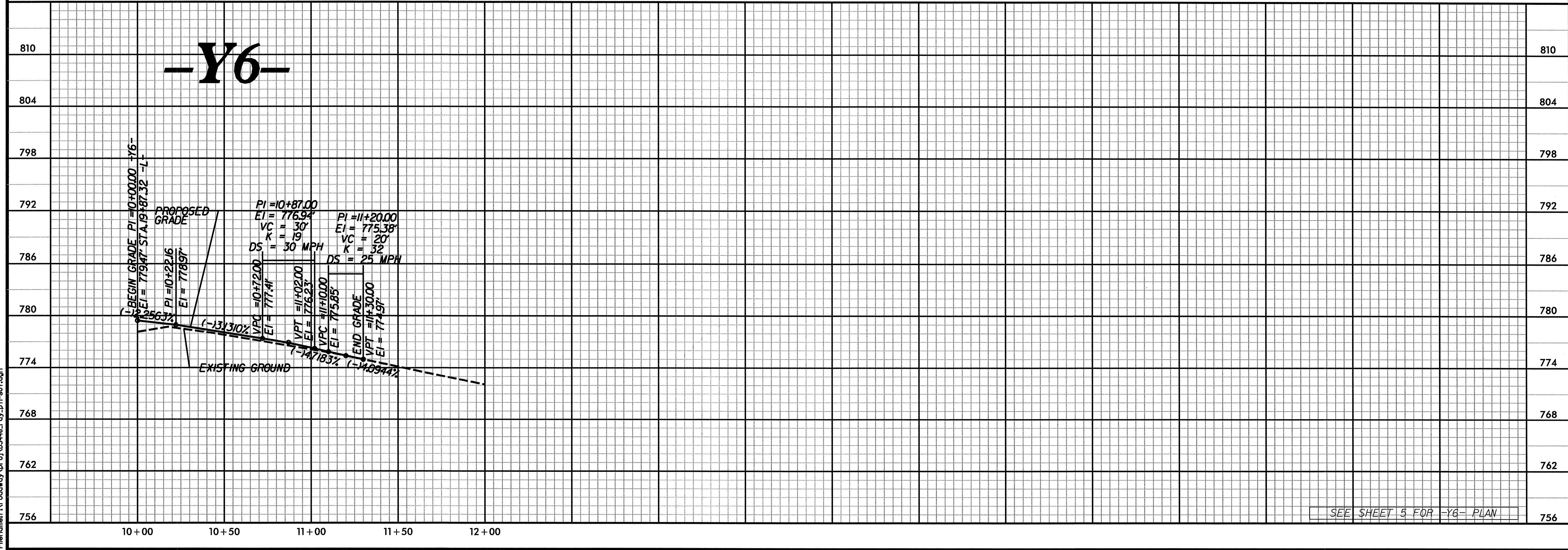
**ARCADIS**  
G & M of North Carolina, Inc.  
WWW.ARCADIS-US.COM  
801 Corporate Center Drive, Suite 300  
Raleigh, NC 27607-5073  
Tel: 919/854-1282 Fax: 919/854-5448

PROJECT REFERENCE NO. <b>B-3446</b>	SHEET NO. <b>7</b>
ROADWAY DESIGN ENGINEER <i>Laura C. Fisher</i> SEAL 03087 NORTH CAROLINA PROFESSIONAL ENGINEER	HYDRAULICS ENGINEER <i>Max S. Frank</i> SEAL 12386 NORTH CAROLINA PROFESSIONAL ENGINEER

SEAL NOT VALID UNLESS SIGNED AND DATED



SEE SHEET 4 FOR Y3- PLAN  
SEE SHEET 5 FOR Y5- PLAN



SEE SHEET 5 FOR Y6- PLAN

ARCADIS G&M  
Date: 6/5/2007 Time: 8:36:53 AM  
Filename: \\roadway\proj\B3446\_rdy\_bf1-e07.dgn