

**TIP PROJECT: B-3446**

STATE OF NORTH CAROLINA  
 DIVISION OF HIGHWAYS  
 PLAN FOR PROPOSED  
 HIGHWAY EROSION CONTROL  
**DAVIDSON COUNTY**

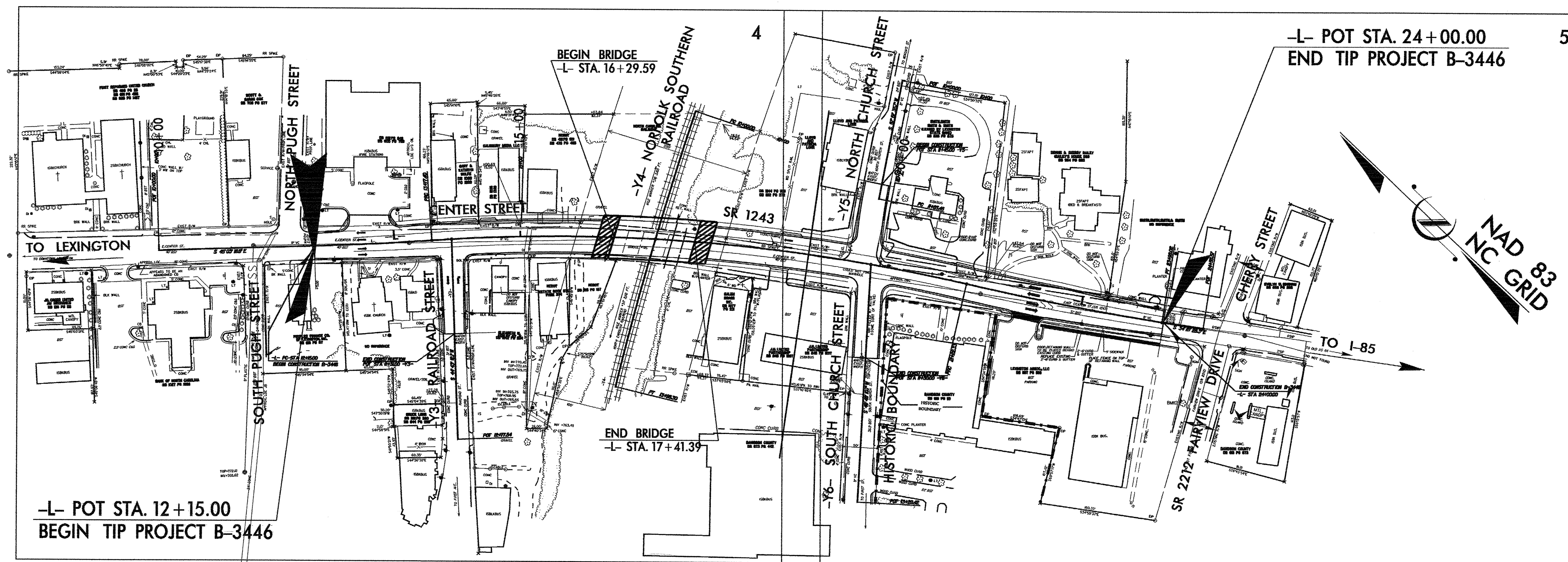
**LOCATION: BRIDGE #415 ON SR 1243 (CENTER STREET)  
 OVER NORFOLK SOUTHERN RAILROAD IN LEXINGTON**  
**TYPE OF WORK: GRADING, PAVING, DRAINAGE,  
 STRUCTURE AND SIGNALS**

STATE	STATE PROJECT REFERENCE NO.	SHEET NO.	TOTAL SHEETS
N.C.	B-3446	EC-1	
STATE PROJ. NO.	F.A. PROJ. NO.	DESCRIPTION	

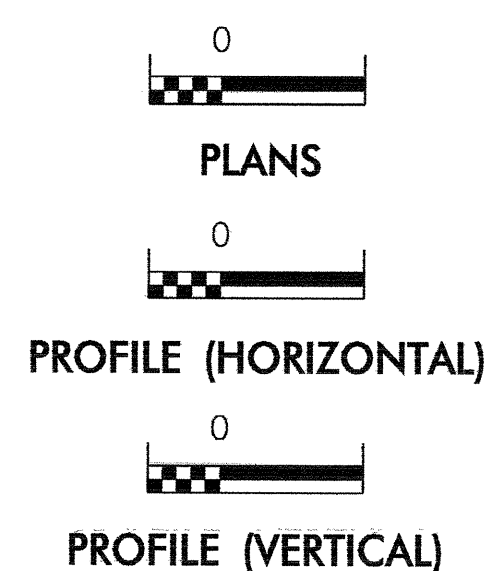
**EROSION AND SEDIMENT CONTROL MEASURES**

Std. #	Description	Symbol
	Streambank Reforestation.....	
1630.03	Temporary Silt Ditch.....	
1630.05	Temporary Diversion.....	
1605.01	Temporary Silt Fence.....	
1606.01	Special Sediment Control Fence.....	
1622.01	Temporary Berms and Slope Drains.....	
1630.01	Riser Basin.....	
1630.02	Silt Basin Type B.....	
1633.01	Temporary Rock Silt Check Type-A.....	
	Temporary Rock Silt Check Type-B.....	
1634.01	Temporary Rock Sediment Dam Type-A.....	
1634.02	Temporary Rock Sediment Dam Type-B.....	
1635.01	Rock Pipe Inlet Sediment Trap Type-A.....	
1635.02	Rock Pipe Inlet Sediment Trap Type-B.....	
1630.04	Stilling Basin.....	
	Rock Inlet Sediment Trap:	
1632.01	Type A.....	
1632.02	Type B.....	
1632.03	Type C.....	
	Skimmer Basin.....	
	Tiered Skimmer Basin.....	

**THIS PROJECT CONTAINS  
 EROSION CONTROL PLANS  
 FOR CLEARING AND  
 GRUBBING PHASE OF  
 CONSTRUCTION.**



**GRAPHIC SCALE**



ROADSIDE ENVIRONMENTAL UNIT  
 DIVISION OF HIGHWAYS  
 STATE OF NORTH CAROLINA

Prepared in the Office of:  
**ROADSIDE ENVIRONMENTAL UNIT**  
 1 South Wilmington St.  
 Raleigh, NC 27611  
**2006 STANDARD SPECIFICATIONS**

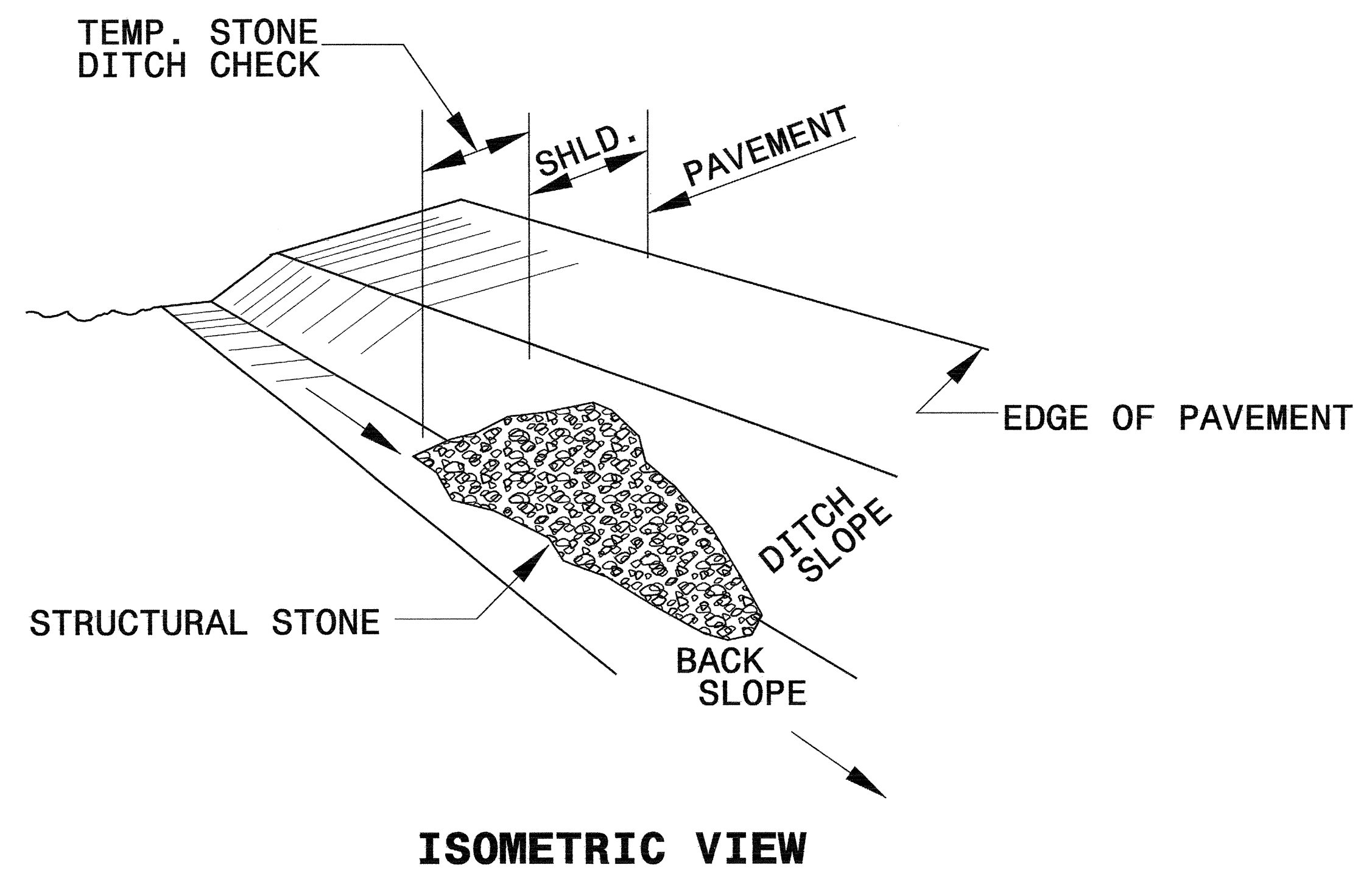
**Roadway Standard Drawings**

The following roadway english standards as appear in "Roadway Standard Drawings"- Roadway Design Unit - N. C. Department of Transportation - Raleigh, N. C., dated July 18, 2006 and the latest revision thereto are applicable to this project and by reference hereby are considered a part of these plans.

- |                                      |  |
|--------------------------------------|--|
| 1605.01 Temporary Silt Fence         | 1632.03 Rock Inlet Sediment Trap Type C  |
| 1607.01 Gravel Construction Entrance | 1633.01 Temporary Rock Silt Check Type A |

PROJECT REFERENCE NO. B-3446	SHEET NO. EC-2
RW SHEET NO.	
ROADWAY DESIGN ENGINEER	HYDRAULICS ENGINEER

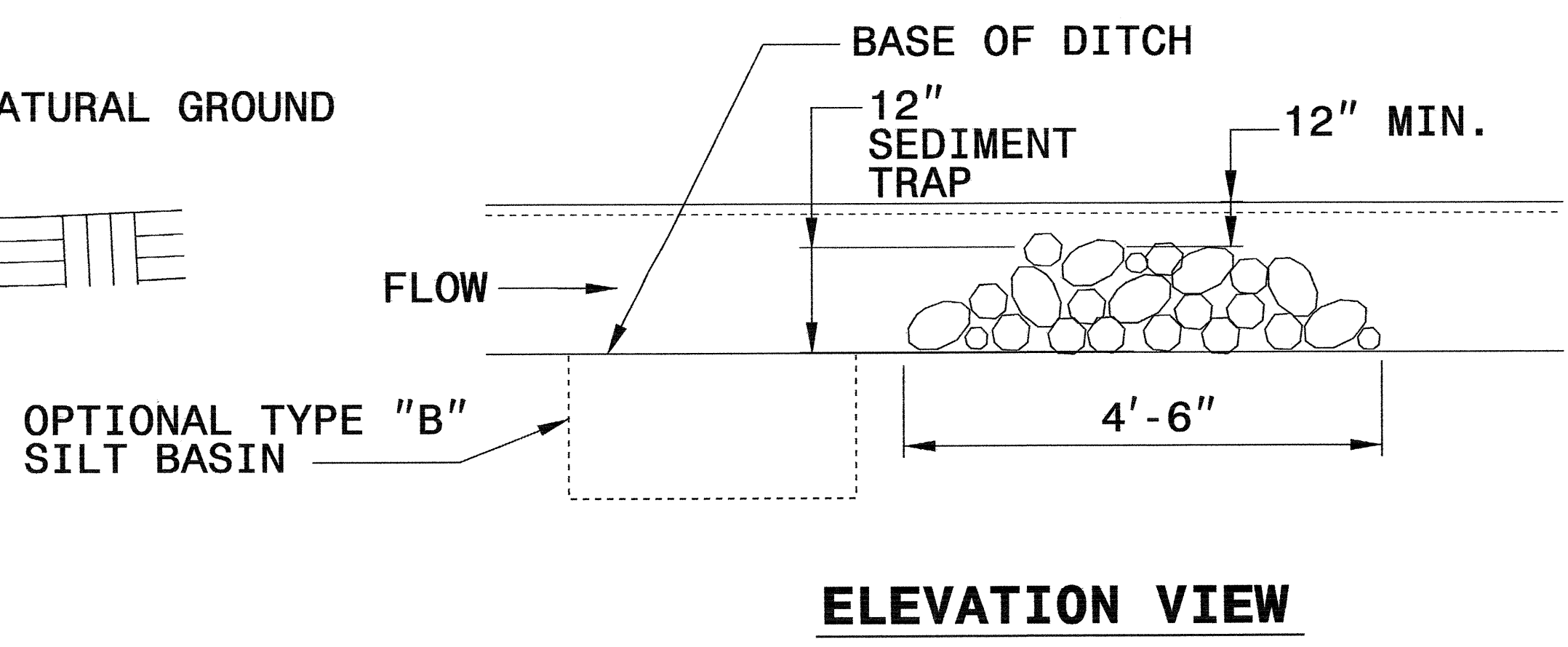
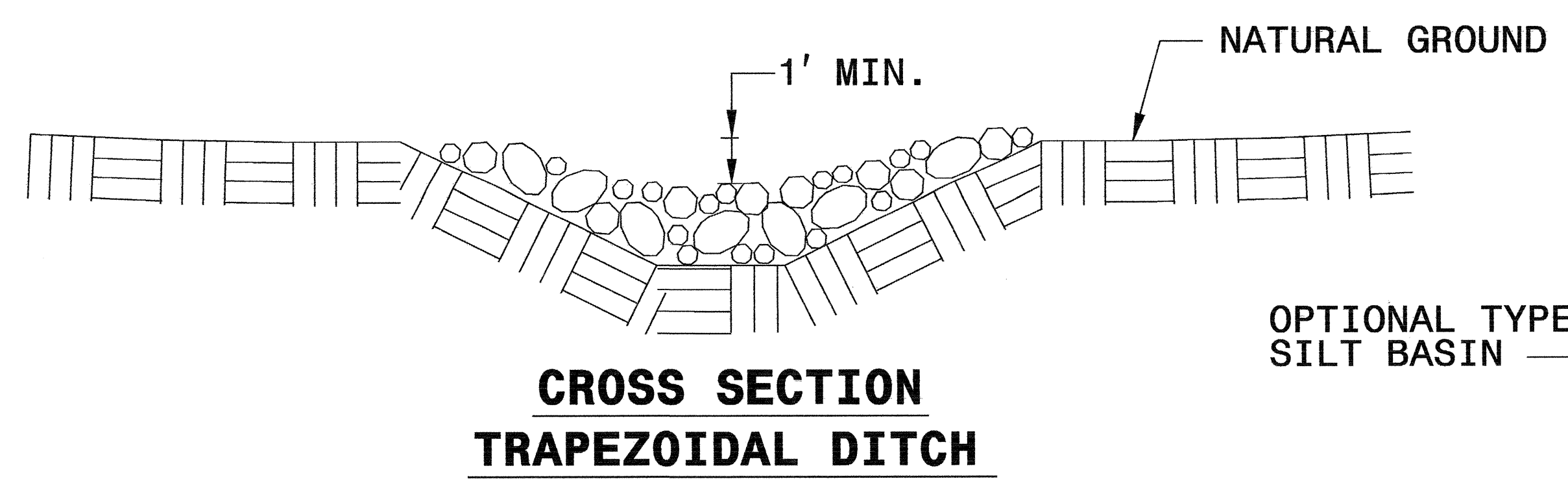
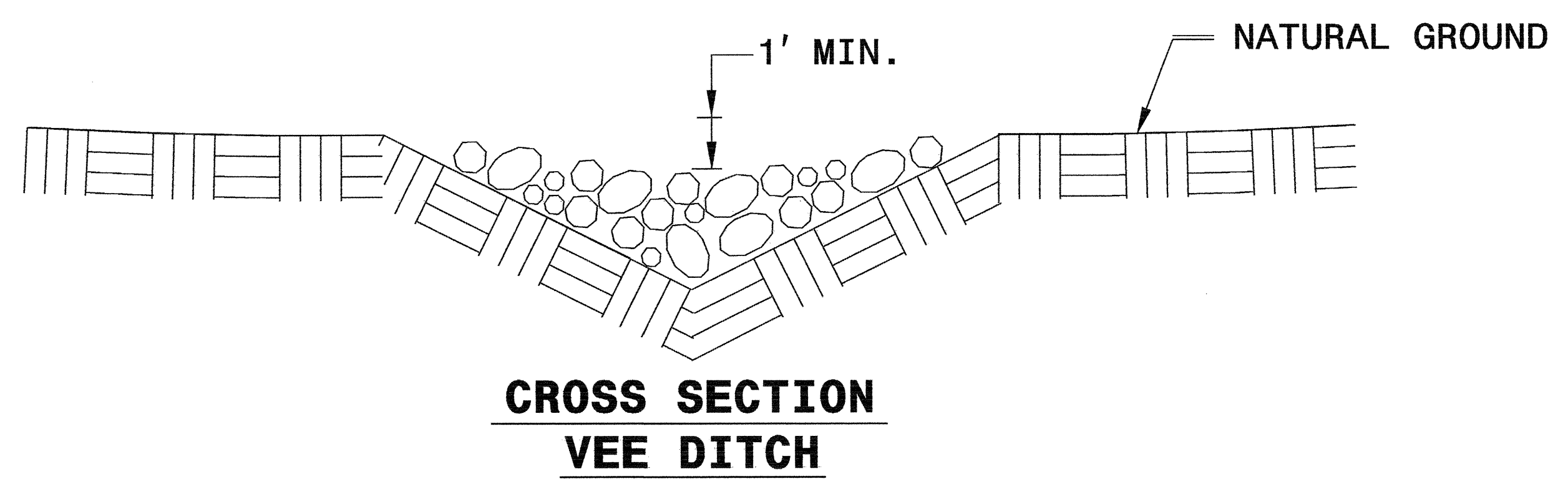
# TEMPORARY ROCK SILT CHECK TYPE 'B' DETAIL



NOTES:

USE CLASS 'B' EROSION CONTROL STONE FOR STRUCTURAL STONE.

THE ENGINEER MAY DIRECT THE OPTION OF CLASS "A" STONE FOR SITES HAVING LESS THAN ONE (1) ACRE DRAINAGE AREA AND A DITCH GRADE LESS THAN 3%.

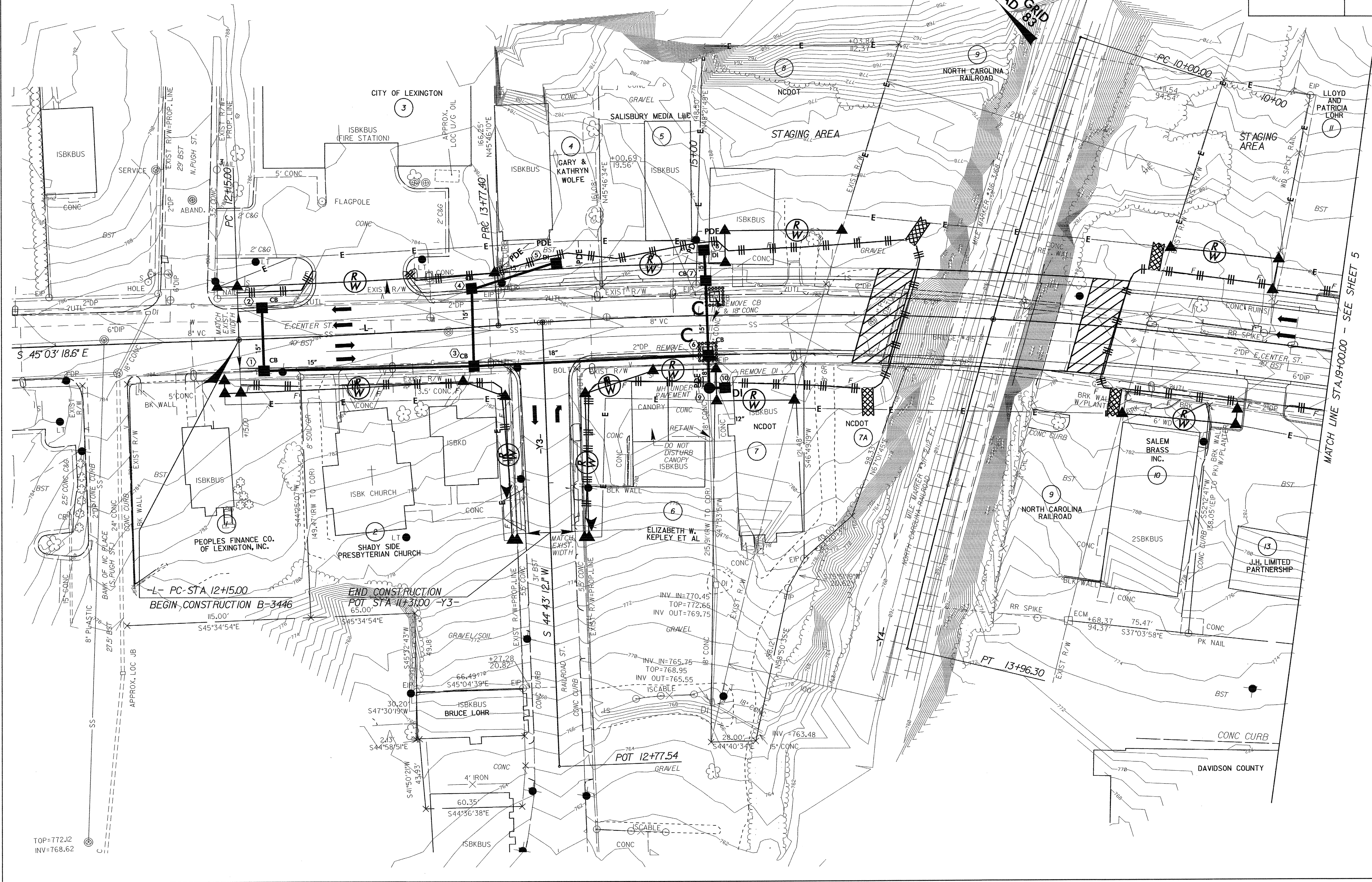




PROJECT REFERENCE NO. B-3446	SHEET NO. EC-3/CONST.4
R/W SHEET NO.	
ROADWAY DESIGN ENGINEER	HYDRAULICS ENGINEER

NOTE:  
PLACE TEMPORARY ROCK SEDIMENT DAMS TYPE - B  
AND TEMPORARY ROCK SILT CHECKS TYPE - A AT  
DRAINAGE OUTLETS.

REVISIONS



TOP=772.12  
INV=768.62



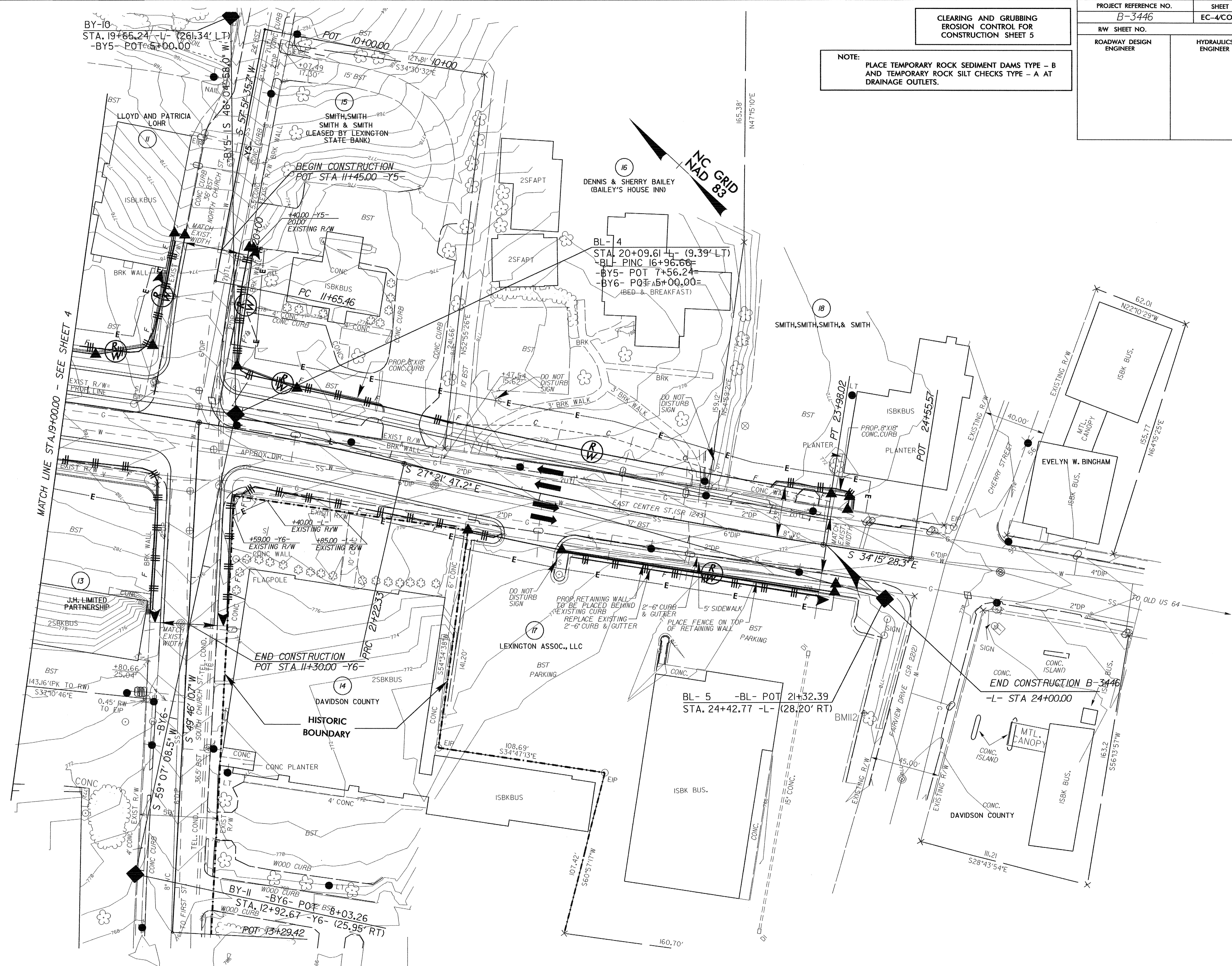
PROJECT REFERENCE NO.	SHEET NO.
B-3446	EC-4/CONST.5
R/W SHEET NO.	
ROADWAY DESIGN ENGINEER	HYDRAULICS ENGINEER

**CLEARING AND GRUBBING  
EROSION CONTROL FOR  
CONSTRUCTION SHEET 5**

**NOTE:**  
PLACE TEMPORARY ROCK SEDIMENT DAMS TYPE - B  
AND TEMPORARY ROCK SILT CHECKS TYPE - A AT  
DRAINAGE OUTLETS.

7/2/99

REVISIONS



MATCH LINE STA 19+00.00 - SEE SHEET 4

END CONSTRUCTION  
POT STA 11+30.00 -Y6

DAVIDSON COUNTY  
HISTORIC  
BOUNDARY

BL-5 -BL- POT 21+32.39  
STA. 24+42.77 -L- (28.20' RT)

END CONSTRUCTION B-3446  
-L- STA 24+00.00

BY-11  
STA. 12+92.67 -Y6- POT 13+29.42  
BY-10  
STA. 19+65.24 -L- (26.34' LT)  
BY-5  
POT 15+00.00

BL-4  
STA. 20+09.61 -L- (9.39' LT)  
BL- PINC 16+96.66  
BY-5- POT 7+56.24  
BY-6- POT 15+00.00  
(BED & BREAKFAST)

16  
DENNIS & SHERRY BAILEY  
(BAILEY'S HOUSE INN)

18  
SMITH, SMITH, SMITH & SMITH

14  
LEXINGTON ASSOC., LLC

13  
J.H. LIMITED  
PARTNERSHIP

EVELYN W. BINGHAM

LLOYD AND PATRICIA  
LOHR

SMITH, SMITH  
SMITH & SMITH  
(LEASED BY LEXINGTON  
STATE BANK)

NC GRID  
NAD 83

ISBK BUS.

ISBK BUS.

ISBK BUS.

ISBK BUS.

ISBK BUS.

ISBK BUS.

ISBK BUS.

ISBK BUS.

ISBK BUS.

ISBK BUS.

ISBK BUS.

ISBK BUS.

ISBK BUS.

ISBK BUS.

ISBK BUS.

ISBK BUS.

ISBK BUS.

ISBK BUS.

ISBK BUS.

ISBK BUS.

ISBK BUS.

ISBK BUS.

ISBK BUS.

ISBK BUS.

ISBK BUS.

ISBK BUS.

ISBK BUS.

ISBK BUS.

ISBK BUS.

ISBK BUS.

ISBK BUS.

ISBK BUS.

ISBK BUS.

ISBK BUS.

ISBK BUS.

ISBK BUS.

ISBK BUS.

ISBK BUS.

ISBK BUS.

ISBK BUS.

ISBK BUS.

ISBK BUS.

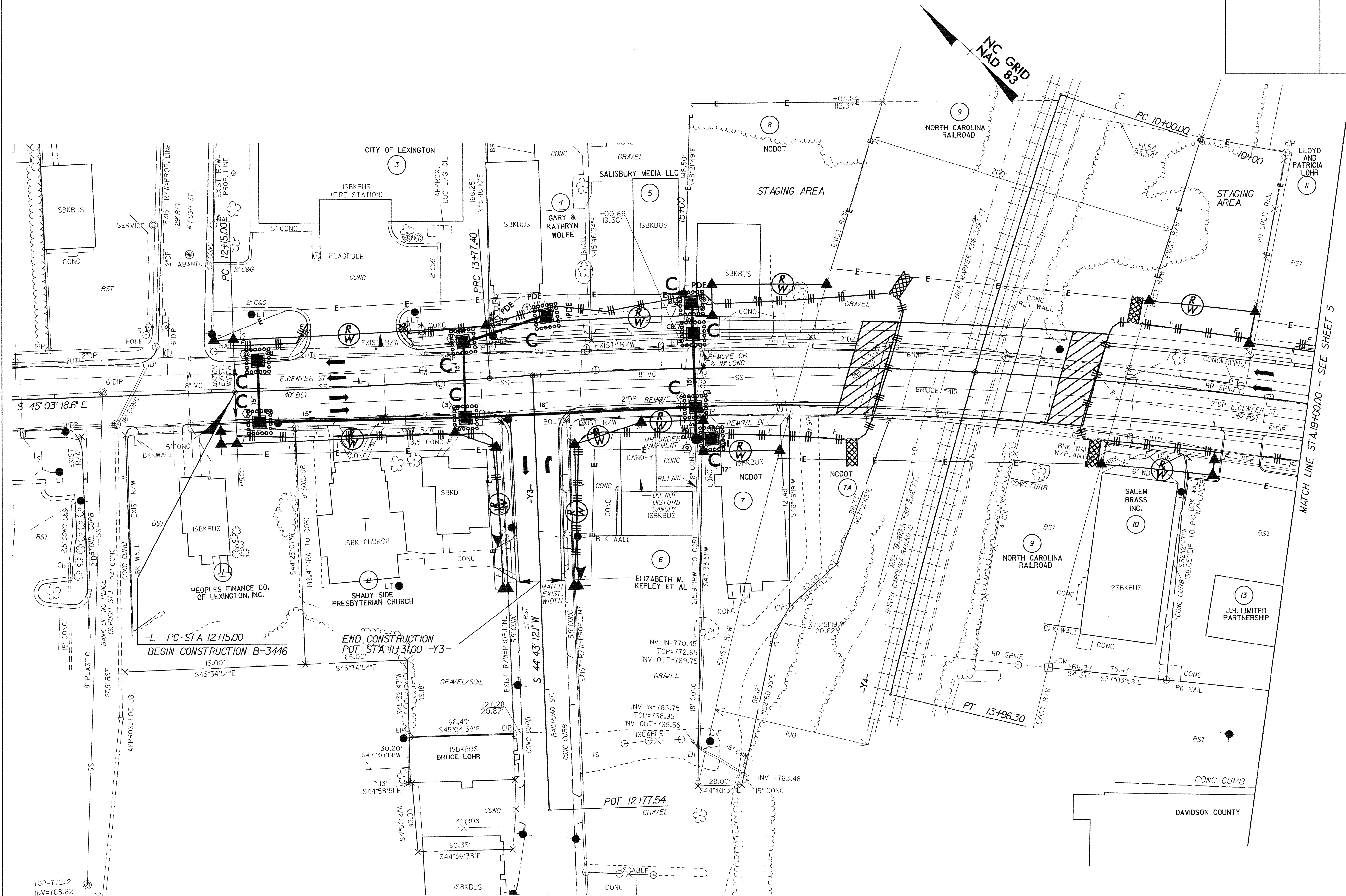
ISBK BUS.

ISBK BUS.



PROJECT REFERENCE NO.		SHEET NO.	
B-3446		EC-5/CONST.4	
RW SHEET NO.			
ROADWAY DESIGN ENGINEER		HYDRAULICS ENGINEER	

REVISIONS



TOP=772.12  
INV=768.62

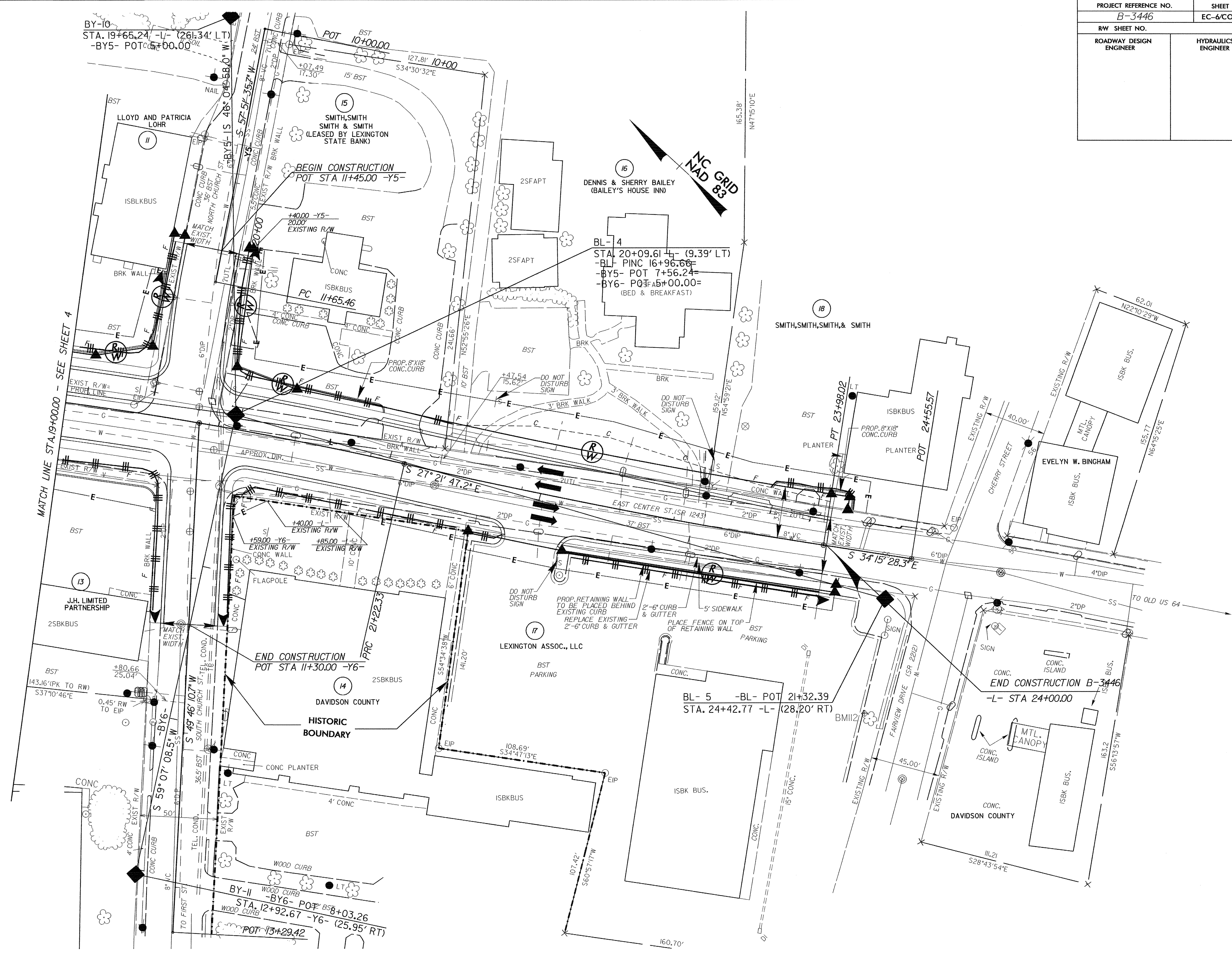
MATCH LINE STA 19+00.00 - SEE SHEET 5



PROJECT REFERENCE NO.	SHEET NO.
B-3446	EC-6/CONST.5
RW SHEET NO.	
ROADWAY DESIGN ENGINEER	HYDRAULICS ENGINEER

7/12/99

REVISIONS



BY-10  
STA. 19+66.24 -L- (261.34' LT)  
-BY5- POT 17+00.00

BEGIN CONSTRUCTION  
POT STA 11+45.00 -Y5-

BL-4  
STA. 20+09.61 -L- (9.39' LT)  
-BL- PINC 16+96.66=  
-BY5- POT 7+56.24=  
-BY6- POT 15+00.00=  
(BED & BREAKFAST)

END CONSTRUCTION  
POT STA 11+30.00 -Y6-

BL-5 -BL- POT 21+32.39  
STA. 24+42.77 -L- (28.20' RT)

END CONSTRUCTION B-3446  
-L- STA 24+00.00

BY-II  
STA. 12+92.67 -Y6- POT 13+29.42  
-BY6- POT 18+03.26  
-L- (25.95' RT)