

**TIP PROJECT: B-2950**

STATE OF NORTH CAROLINA  
DIVISION OF HIGHWAYS

---

PLAN FOR PROPOSED  
HIGHWAY EROSION CONTROL

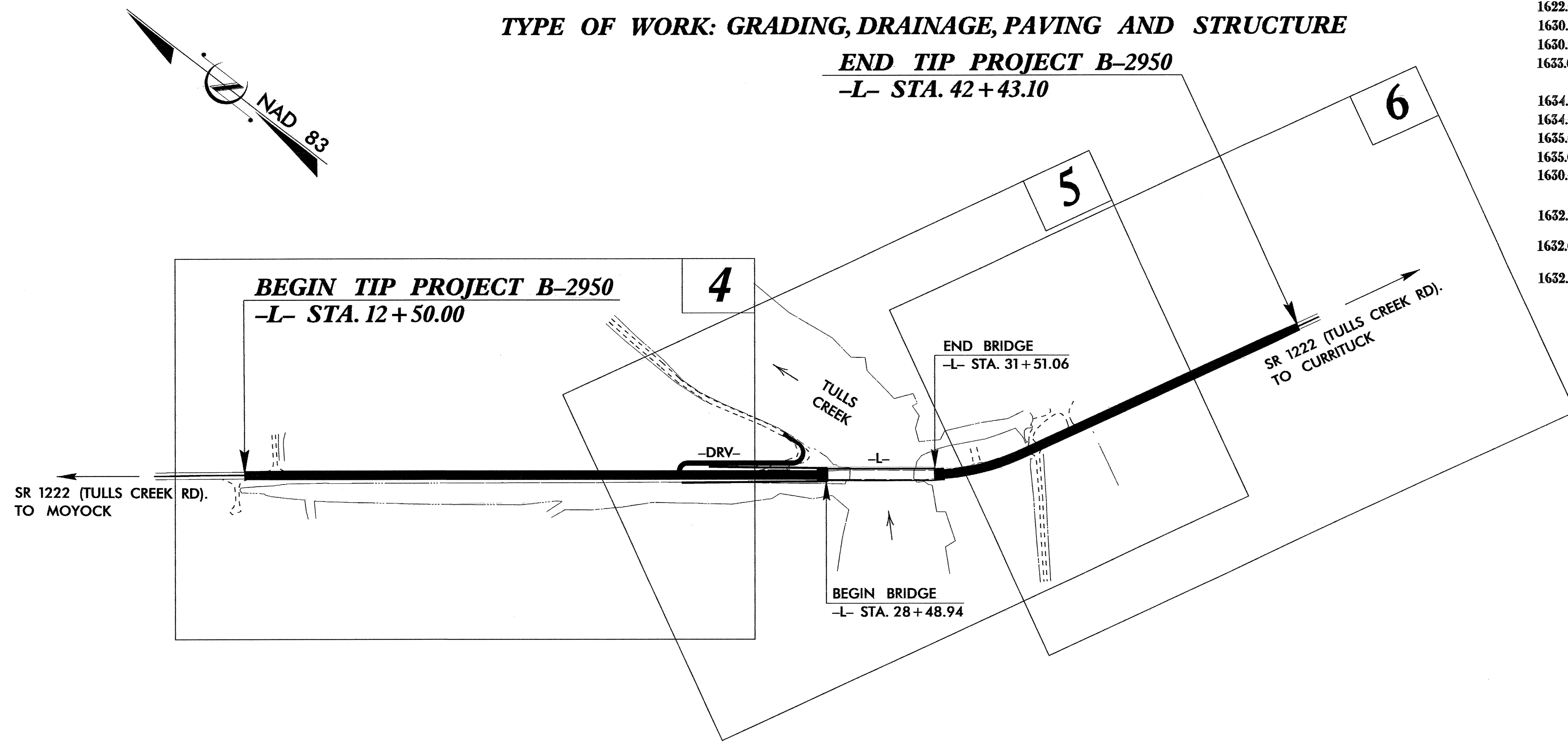
---

**CURRITUCK COUNTY**

**LOCATION: BRIDGE NO. 4 OVER TULLS CREEK  
ON SR 1222**

**TYPE OF WORK: GRADING, DRAINAGE, PAVING AND STRUCTURE**

**END TIP PROJECT B-2950  
-L- STA. 42 + 43.10**



STATE	STATE PROJECT REFERENCE NO.	SHEET NO.	TOTAL SHEETS
N.C.	B-2950	EC-1	
STATE PROJ. NO.	F.A. PROJ. NO.	DESCRIPTION	

**EROSION AND SEDIMENT CONTROL MEASURES**

Std. #	Description	Symbol
	Streambank Reforestation.....	
1630.03	Temporary Silt Ditch.....	
1630.05	Temporary Diversion.....	
1605.01	Temporary Silt Fence.....	
1606.01	Special Sediment Control Fence.....	
1622.01	Temporary Berms and Slope Drains.....	
1630.01	Riser Basin.....	
1630.02	Silt Basin Type B.....	
1633.01	Temporary Rock Silt Check Type-A.....	
	Temporary Rock Silt Check Type-B.....	
1634.01	Temporary Rock Sediment Dam Type-A.....	
1634.02	Temporary Rock Sediment Dam Type-B.....	
1635.01	Rock Pipe Inlet Sediment Trap Type-A.....	
1635.02	Rock Pipe Inlet Sediment Trap Type-B.....	
1630.04	Stilling Basin.....	
	Rock Inlet Sediment Trap:	
1632.01	Type A.....	
1632.02	Type B.....	
1632.03	Type C.....	
	Skimmer Basin.....	
	Tiered Skimmer Basin.....	

**THIS PROJECT CONTAINS  
EROSION CONTROL PLANS  
FOR CLEARING AND  
GRUBBING PHASE OF  
CONSTRUCTION.**

**THIS PROJECT HAS  
BEEN DESIGNED TO  
SENSITIVE WATERSHED  
STANDARDS.**

**ENVIRONMENTALLY  
SENSITIVE AREA(S) EXIST  
ON THIS PROJECT**  
*Refer To E. C. Special Provisions  
for Special Considerations.*

**GRAPHIC SCALE**

0

PLANS

0

PROFILE (HORIZONTAL)

0

PROFILE (VERTICAL)

ROADSIDE ENVIRONMENTAL UNIT  
DIVISION OF HIGHWAYS  
STATE OF NORTH CAROLINA

Prepared In the Office of:  
**ROADSIDE ENVIRONMENTAL UNIT**  
1 South Wilmington St.  
Raleigh, NC 27611  
**2006 STANDARD SPECIFICATIONS**

Roadway Standard Drawings

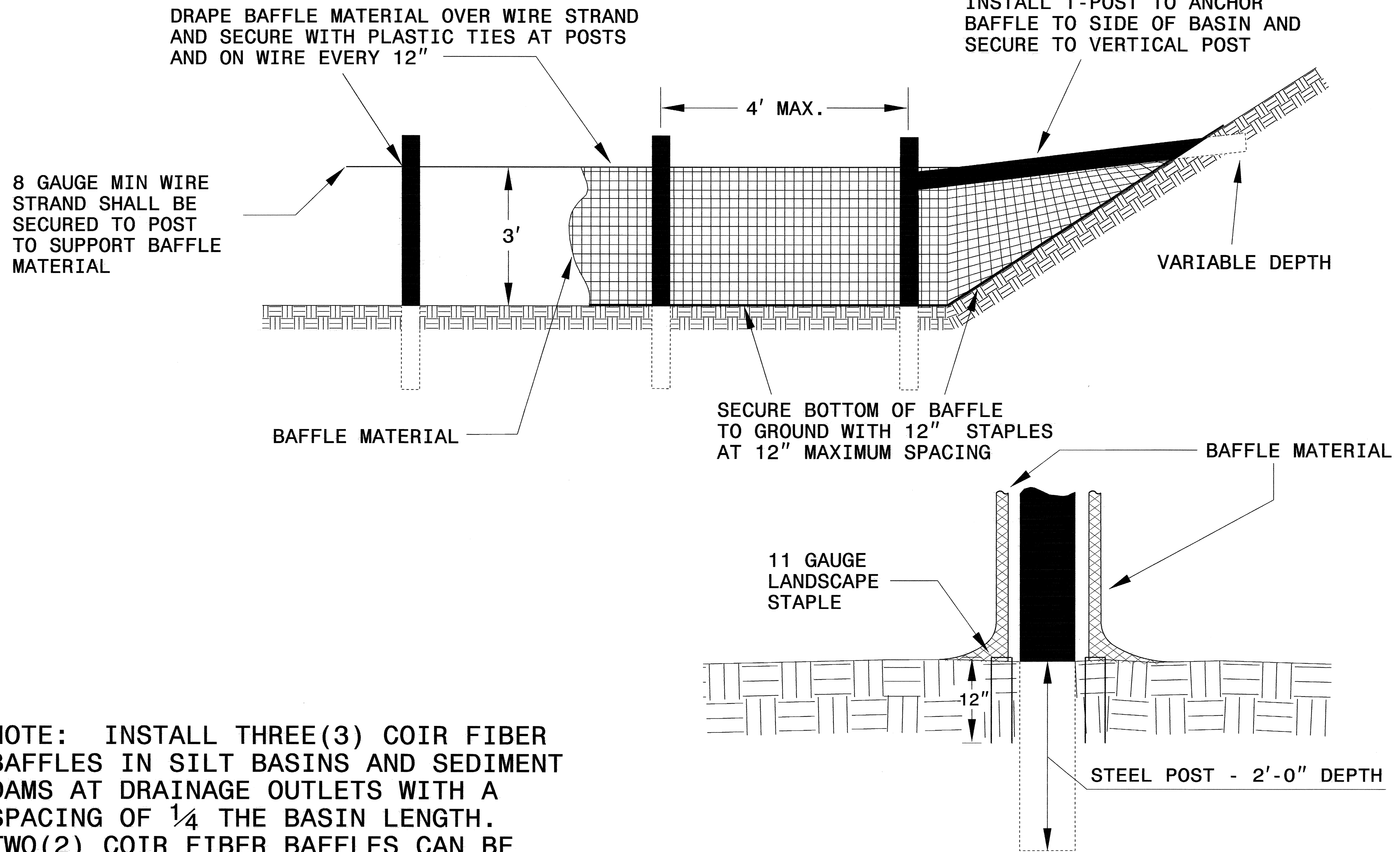
The following roadway english standards as appear in "Roadway Standard Drawings"- Roadway Design Unit - N. C. Department of Transportation - Raleigh, N. C., dated July 18, 2006 and the latest revision thereto are applicable to this project and by reference hereby are considered a part of these plans.

1605.01 Temporary Silt Fence	1630.05 Temporary Diversion
1606.01 Special Sediment Control Fence	1632.03 Rock Inlet Sediment Trap Type C
1607.01 Gravel Construction Entrance	1633.01 Temporary Rock Silt Check Type A
1622.01 Temporary Berms and Slope Drains	

06-MAR-2007 09:58  
p:\projects\2950\2950.dwg  
11/15/2006

PROJECT REFERENCE NO. B-2950	SHEET NO. EC-2
RW SHEET NO.	
ROADWAY DESIGN ENGINEER	HYDRAULICS ENGINEER

# COIR FIBER BAFFLE DETAIL

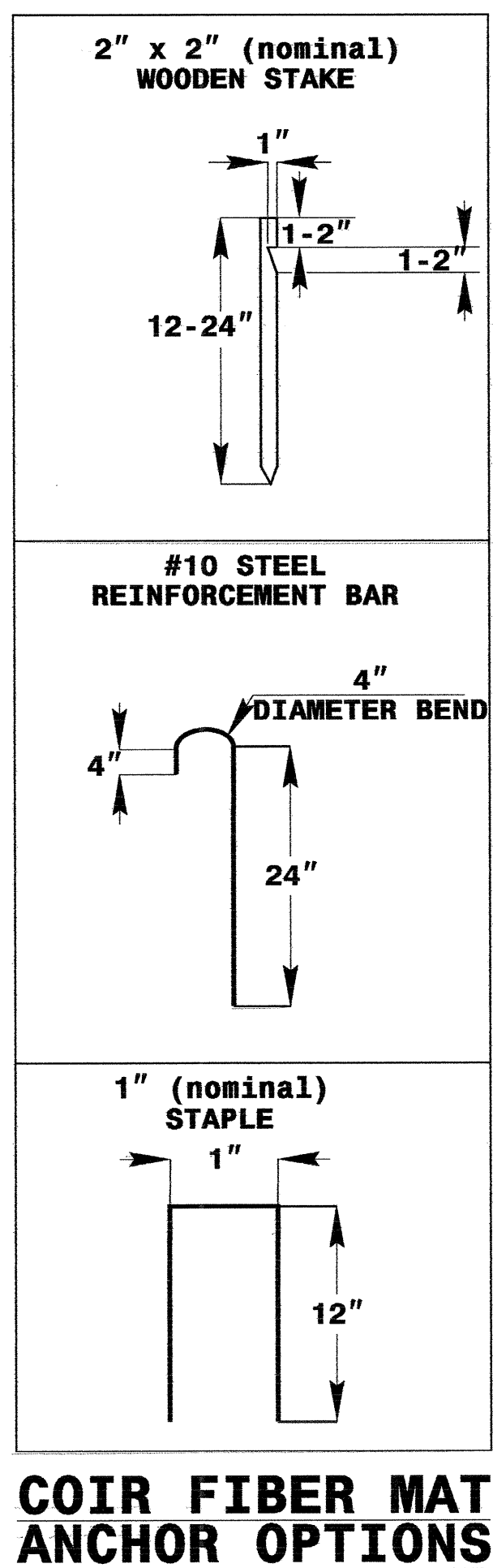
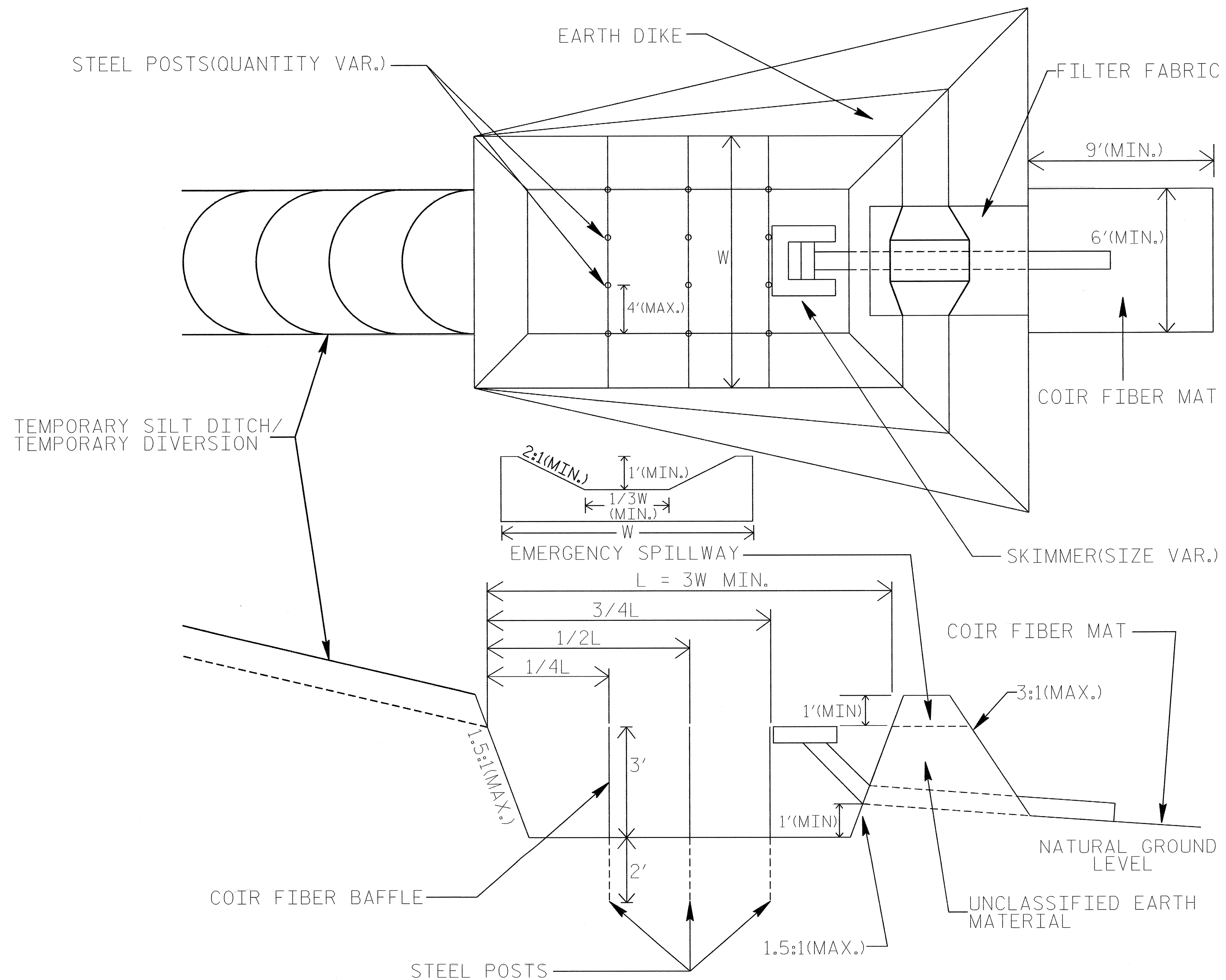


NOTE: INSTALL THREE(3) COIR FIBER BAFFLES IN SILT BASINS AND SEDIMENT DAMS AT DRAINAGE OUTLETS WITH A SPACING OF  $\frac{1}{4}$  THE BASIN LENGTH. TWO(2) COIR FIBER BAFFLES CAN BE INSTALLED IN SILT BASINS AND DAMS LESS THAN 20 FT. IN LENGTH WITH A SPACING OF  $\frac{1}{3}$  THE BASIN LENGTH.

BAFFLE MATERIAL SHALL BE SECURED TO THE BOTTOM AND SIDES OF BASIN USING 12" LANDSCAPE STAPLES

# SKIMMER BASIN WITH BAFFLES DETAIL

PROJECT REFERENCE NO. B-2950	SHEET NO. EC-2A
RW SHEET NO.	
ROADWAY DESIGN ENGINEER	HYDRAULICS ENGINEER



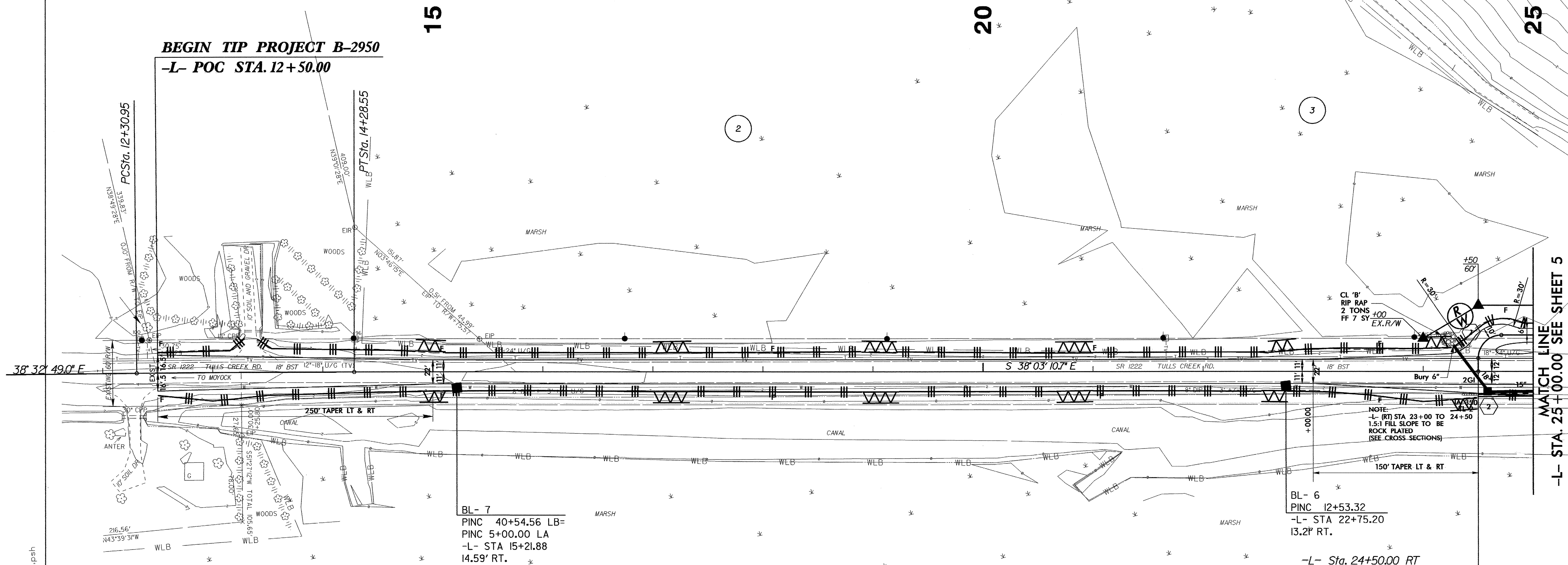
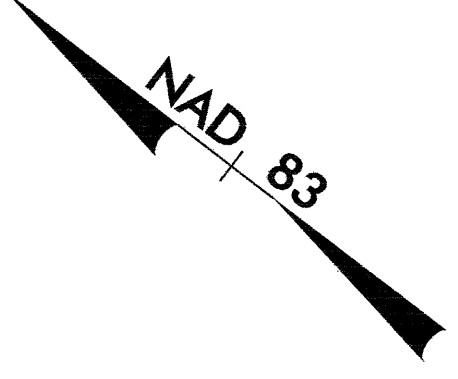


7/2/99

# CLEARING AND GRUBBING EROSION CONTROL FOR CONSTRUCTION SHEET 4

NOTE:  
PLACE TEMPORARY ROCK SILT CHECKS TYPE - A AT  
DRAINAGE OUTLETS.

PROJECT REFERENCE NO. B-2950	SHEET NO. EC-3/CONST.4
RW SHEET NO.	
ROADWAY DESIGN ENGINEER	HYDRAULICS ENGINEER



BL- 7  
 PINC 40+54.56 LB=  
 PINC 5+00.00 LA  
 -L- STA 15+21.88  
 14.59' RT.

BL- 6  
 PINC 12+53.32  
 -L- STA 22+75.20  
 13.2' RT.

-L- Sta. 24+50.00 RT  
 BEGIN RETAINING WALL &  
 SINGLE FACE CONCRETE BARRIER  
 (23.09' offset to center of wall)

- NOTE:
1. RETAINING WALL AND SINGLE FACE CONCRETE BARRIER TO FOLLOW A STRAIGHT LINE TAPER FROM FULL SHOULDER WIDTH (8') TO BRIDGE RAIL ON APPROACH SLAB.
  2. SEE STRUCTURE PLANS FOR RETAINING WALL AND BRIDGE DESIGN

P.S. = PAVED SHOULDER  
 FOR -L- & -DRV- PROFILES SEE SHEET 7 & 8  
 DESIGN EXCEPTION REQUIRED FOR DESIGN SPEED (50 MPH),  
 MIN. HORIZONTAL CURVE RADIUS (610')  
 AND HORIZONTAL STOPPING SIGHT DISTANCE (308').

06-MAR-2007 08:47  
 G:\cpr-proj\ec-3\design\environmental\design\b2950\_rdy.s04.psh  
 AT: RENV221502

PROJECT REFERENCE NO. <b>B-2950</b>	SHEET NO. EC-4/CONST.5
RW SHEET NO.	
ROADWAY DESIGN ENGINEER	HYDRAULICS ENGINEER

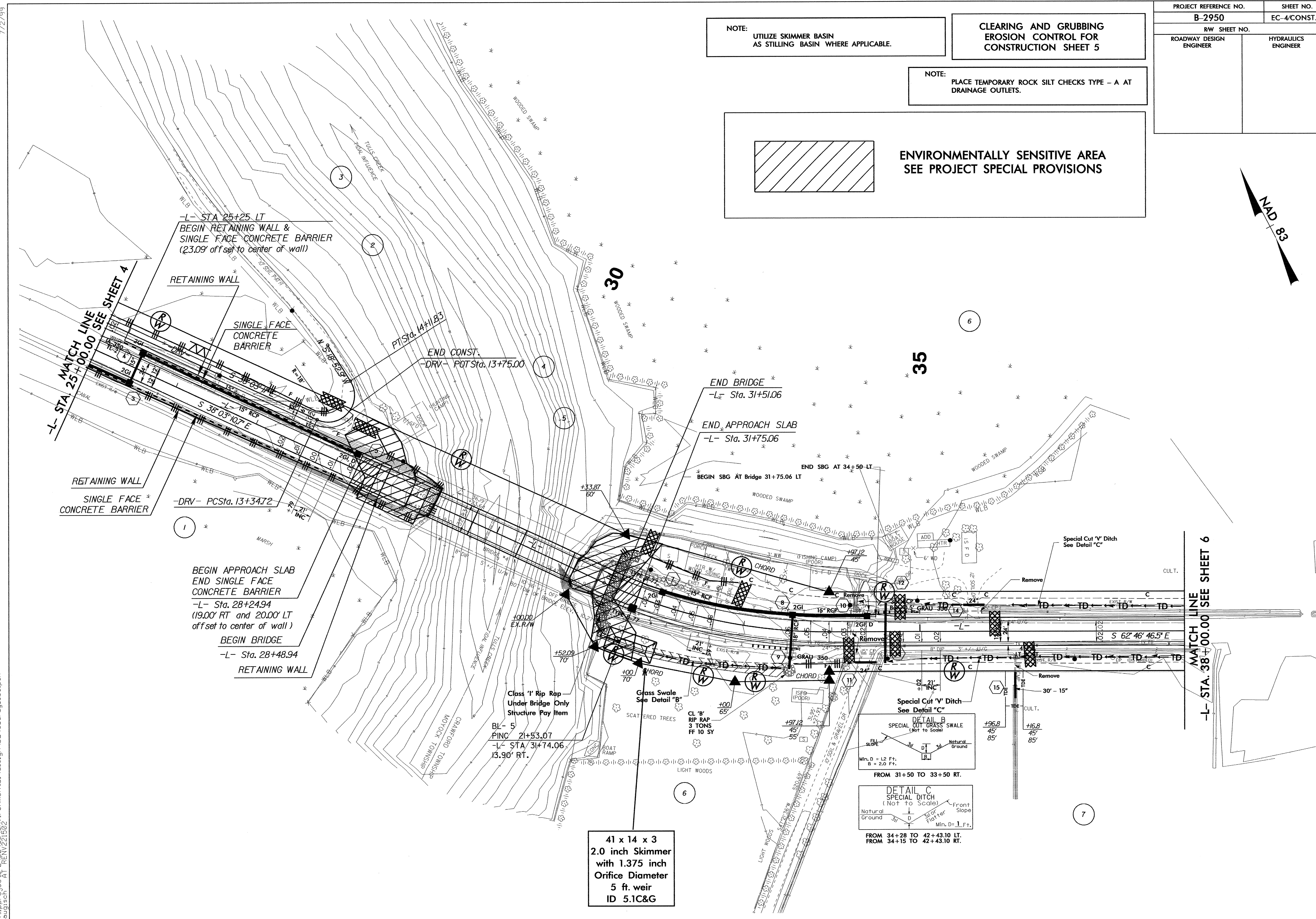
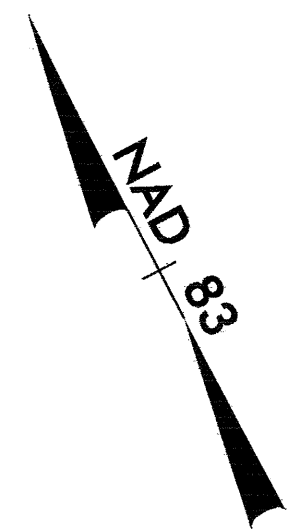
NOTE:  
UTILIZE SKIMMER BASIN  
AS STILLING BASIN WHERE APPLICABLE.

CLEARING AND GRUBBING  
EROSION CONTROL FOR  
CONSTRUCTION SHEET 5

NOTE:  
PLACE TEMPORARY ROCK SILT CHECKS TYPE - A AT  
DRAINAGE OUTLETS.



**ENVIRONMENTALLY SENSITIVE AREA**  
SEE PROJECT SPECIAL PROVISIONS



-L- STA 25+25 LT  
BEGIN RETAINING WALL &  
SINGLE FACE CONCRETE BARRIER  
(23.09' offset to center of wall)

RETAINING WALL  
SINGLE FACE  
CONCRETE  
BARRIER

END CONST.  
-DRV- POT Sta. 13+75.00

END BRIDGE  
-L- Sta. 31+51.06

END APPROACH SLAB  
-L- Sta. 31+75.06

RETAINING WALL  
SINGLE FACE  
CONCRETE BARRIER

BEGIN APPROACH SLAB  
END SINGLE FACE  
CONCRETE BARRIER

-L- Sta. 28+24.94  
(19.00' RT and 20.00' LT  
offset to center of wall)

BEGIN BRIDGE

-L- Sta. 28+48.94

RETAINING WALL

Class '1' Rip Rap  
Under Bridge Only  
Structure Pay Item

BL- 5  
PINC 21+53.07  
-L- STA 31+74.06  
13.90' RT.

41 x 14 x 3  
2.0 inch Skimmer  
with 1.375 inch  
Orifice Diameter  
5 ft. weir  
ID 5.1C&G

Special Cut 'V' Ditch  
See Detail 'C'

DETAIL B  
SPECIAL CUT GRASS SWALE  
(Not to Scale)

Min. D = 1.2 Ft.  
B = 2.0 Ft.

FROM 31+50 TO 33+50 RT.

DETAIL C  
SPECIAL DITCH  
(Not to Scale)

Natural Ground  
Front Slope  
Min. D = 1.5 Ft.

FROM 34+28 TO 42+43.10 LT.  
FROM 34+15 TO 42+43.10 RT.

7/27/99  
06-MAR-2007 08:53  
s:\tippec\ec\4-ec\4-ec\2950\environmental\design\2950\_rdy\_s05.psh  
11/27/2007 10:22:59Z



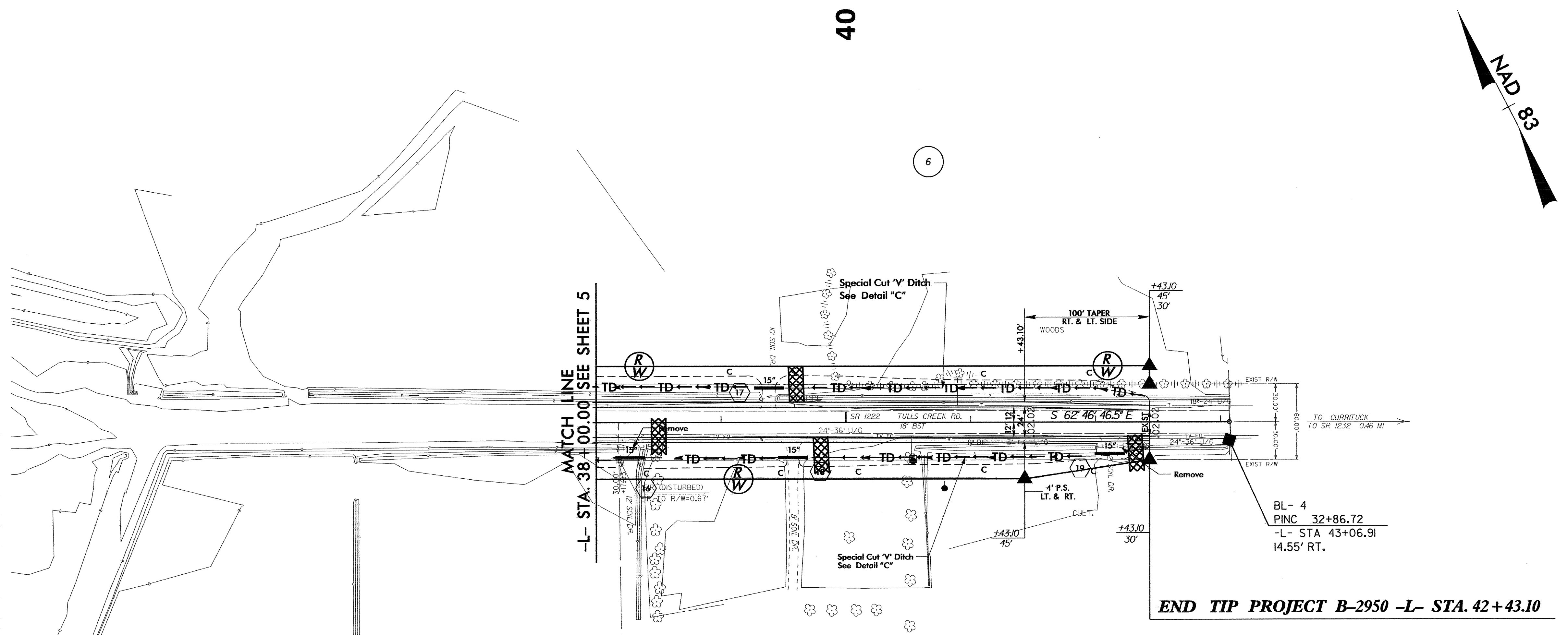
PROJECT REFERENCE NO.	SHEET NO.
B-2950	EC-5/CONST.6
RW SHEET NO.	
ROADWAY DESIGN ENGINEER	HYDRAULICS ENGINEER

NOTE:  
PLACE TEMPORARY ROCK SILT CHECKS TYPE - A AT DRAINAGE OUTLETS.

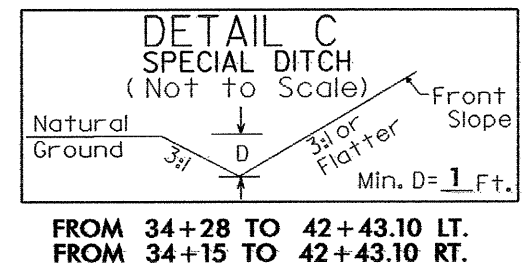
CLEARING AND GRUBBING  
EROSION CONTROL FOR  
CONSTRUCTION SHEET 6

7/12/99

06-MAR-2007 08:53  
m:\projects\ec-5\environmental\design\b2950\_rdy\_s06.psh  
m:\projects\ec-5\environmental\design\b2950\_rdy\_s06.psh  
REV 221502



7  
LESTER INTERPRISES, INC  
DB 170, PG. 765  
DB 118, PG. 350 (MAP)  
DB 142, PG. 58 (MAP)

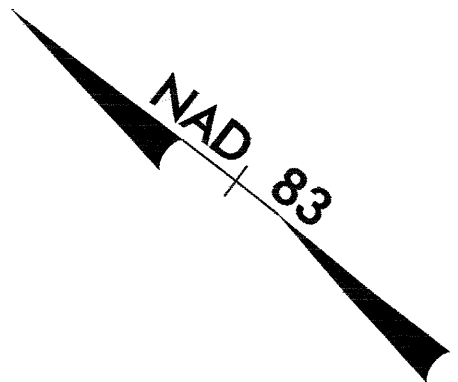


END TIP PROJECT B-2950 -L- STA. 42+43.10

P.S. = PAVED SHOULDER  
FOR -L- PROFILE SEE SHEET 8  
★DESIGN EXCEPTION REQUIRED FOR DESIGN SPEED (50 MPH),  
MIN. HORIZONTAL CURVE RADIUS (610')  
AND HORIZONTAL STOPPING SIGHT DISTANCE (308').

PROJECT REFERENCE NO.	SHEET NO.
B-2950	EC-6/CONST.4
RW SHEET NO.	
ROADWAY DESIGN ENGINEER	HYDRAULICS ENGINEER

7/2/99

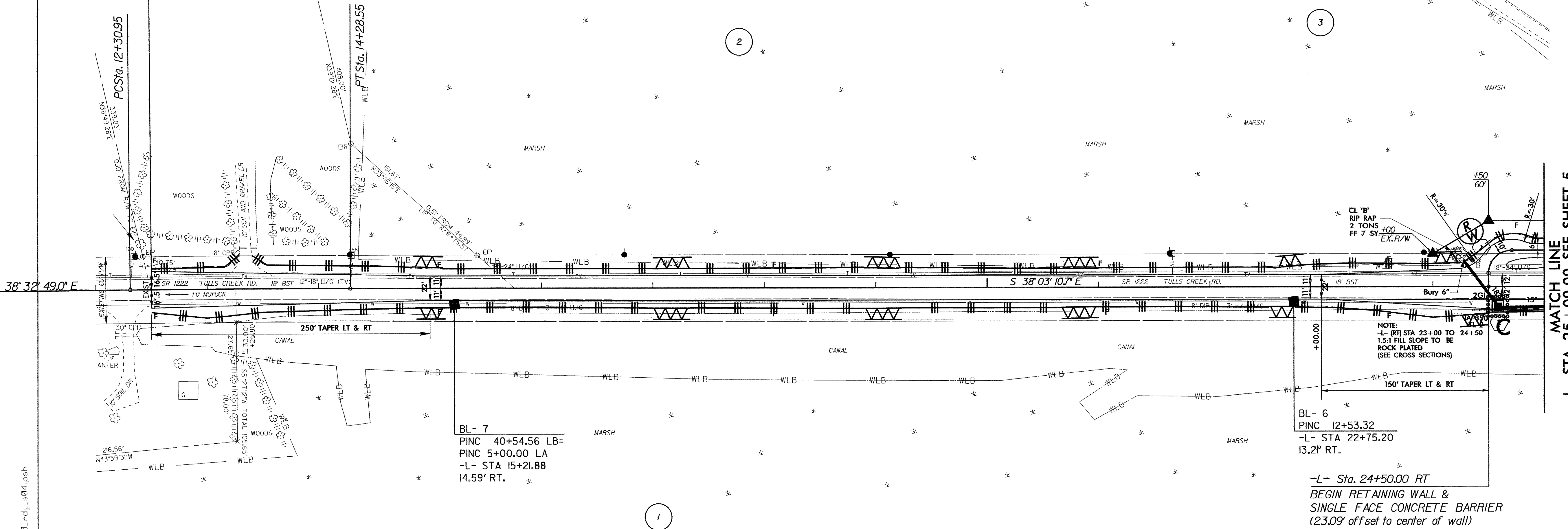


**BEGIN TIP PROJECT B-2950**  
**-L- POC STA. 12+50.00**

15

20

25



BL- 7  
 PINC 40+54.56 LB=  
 PINC 5+00.00 LA=  
 -L- STA 15+21.88  
 14.59' RT.

BL- 6  
 PINC 12+53.32  
 -L- STA 22+75.20  
 13.2' RT.

-L- Sta. 24+50.00 RT  
 BEGIN RETAINING WALL &  
 SINGLE FACE CONCRETE BARRIER  
 (23.09' off set to center of wall)

- NOTE:
1. RETAINING WALL AND SINGLE FACE CONCRETE BARRIER TO FOLLOW A STRAIGHT LINE TAPER FROM FULL SHOULDER WIDTH (8') TO BRIDGE RAIL ON APPROACH SLAB.
  2. SEE STRUCTURE PLANS FOR RETAINING WALL AND BRIDGE DESIGN

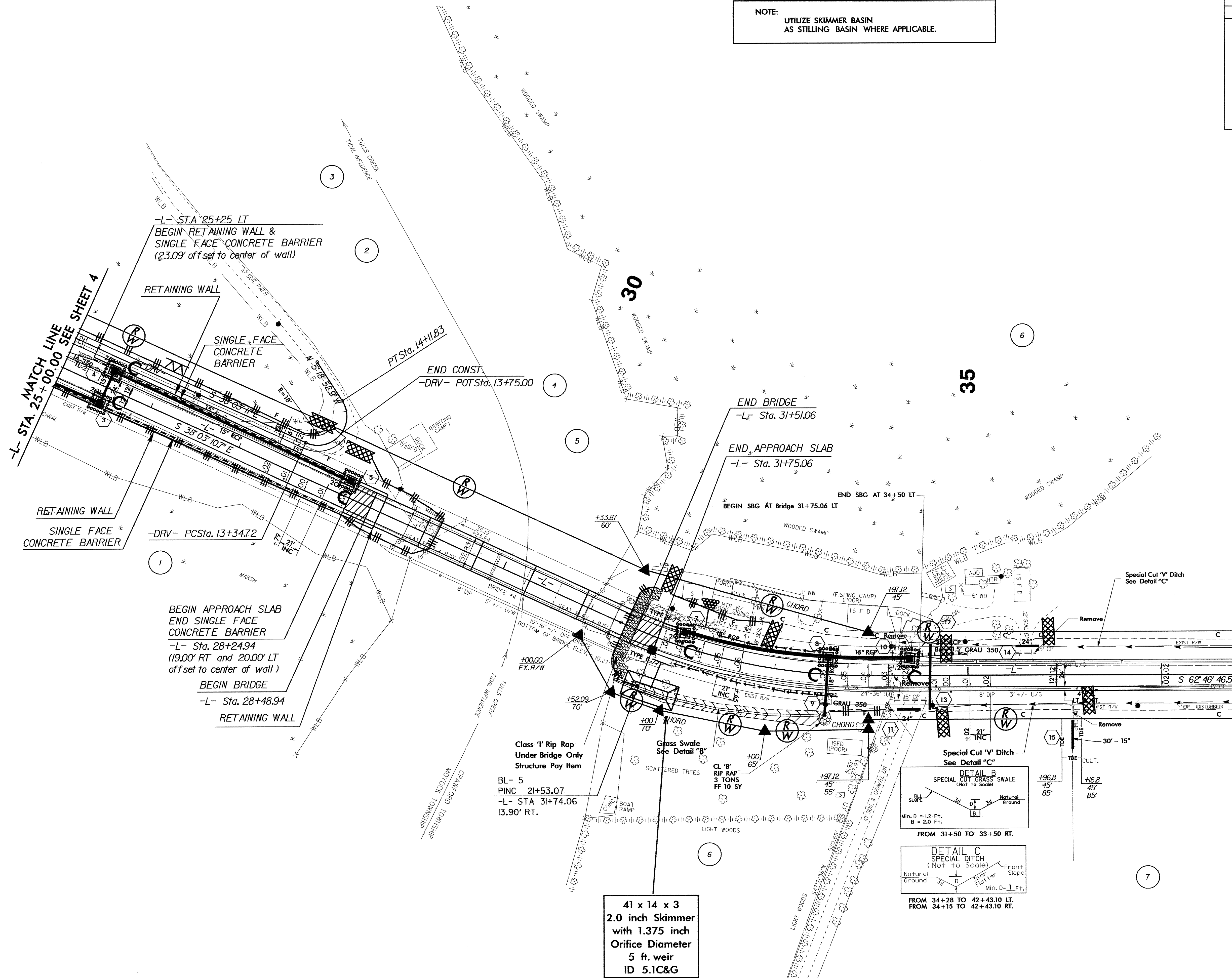
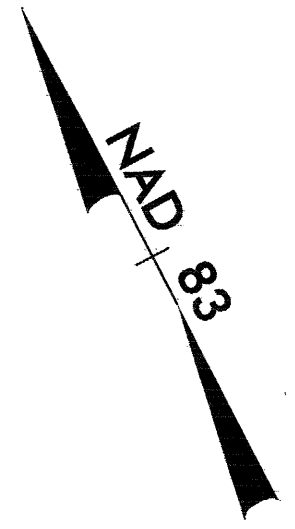
P.S. = PAVED SHOULDER  
 FOR -L- & -DRY- PROFILES SEE SHEET 7 & 8  
 DESIGN EXCEPTION REQUIRED FOR DESIGN SPEED (50 MPH),  
 MIN. HORIZONTAL CURVE RADIUS (610')  
 AND HORIZONTAL STOPPING SIGHT DISTANCE (308').

MATCH LINE  
 -L- STA. 25+00.00 SEE SHEET 5

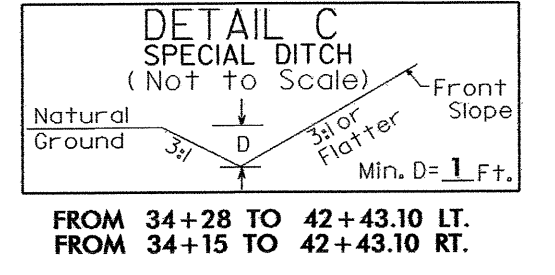
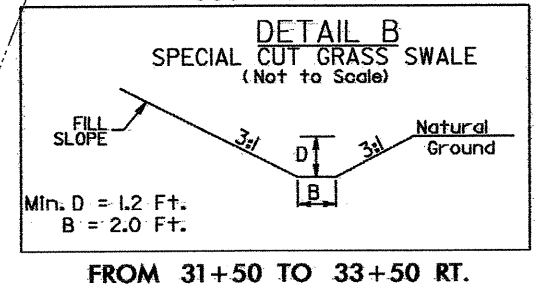
06-MAR-2007 08:48  
 p:\projects\2950\environmental\design\2950\_r.dwg.s04.psh  
 at: PENNY221502

PROJECT REFERENCE NO.	SHEET NO.
B-2950	EC-7/CONST.5
RW SHEET NO.	
ROADWAY DESIGN ENGINEER	HYDRAULICS ENGINEER

NOTE:  
UTILIZE SKIMMER BASIN  
AS STILLING BASIN WHERE APPLICABLE.



41 x 14 x 3  
2.0 inch Skimmer  
with 1.375 inch  
Orifice Diameter  
5 ft. weir  
ID 5.1C&G



-L- STA. 25+00.00 SEE SHEET 4

-L- STA. 38+00.00 SEE SHEET 6

7/2/99  
06-MAR-2007 08:51  
C:\piper\p\ec\at\REV\221502  
d:\s\m\o\environmental\design\bz2950\_rdy\_s05.psh  
REV 1/22/02

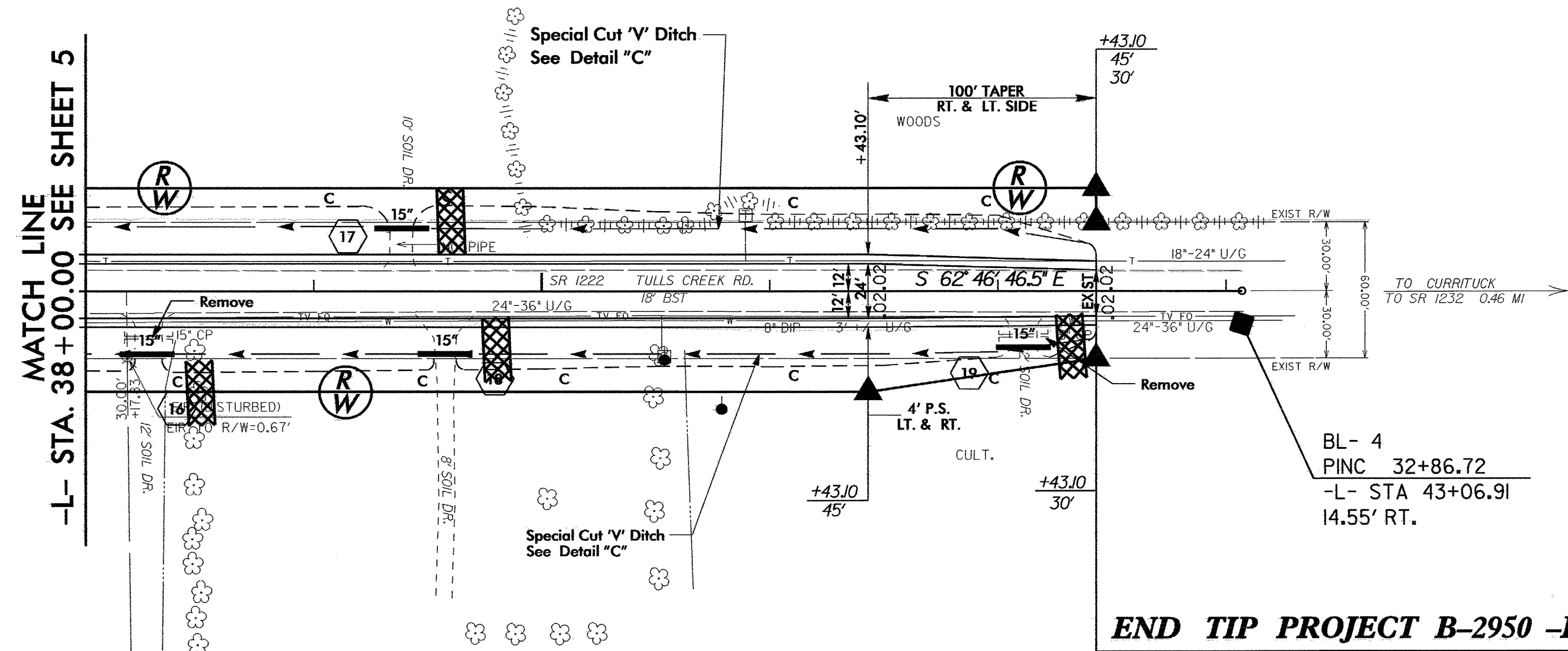
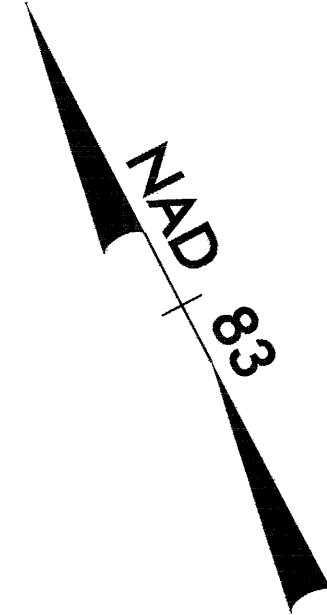


PROJECT REFERENCE NO.	SHEET NO.
B-2950	EC-B/CONST.6
RW SHEET NO.	
ROADWAY DESIGN ENGINEER	HYDRAULICS ENGINEER

7/2/99

40

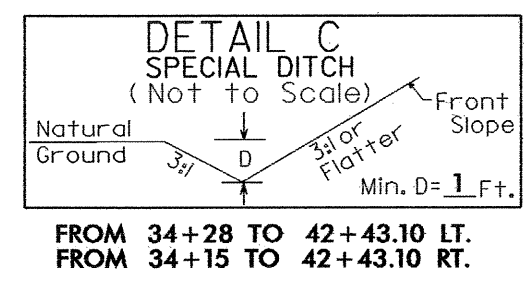
6



MATCH LINE  
-L- STA. 38+00.00 SEE SHEET 5

END TIP PROJECT B-2950 -L- STA. 42+43.10

7  
LESTER INTERPRISES, INC  
DB 170, PG. 765  
DB 118, PG. 350 (MAP)  
DB 142, PG. 58 (MAP)



P.S. = PAVED SHOULDER  
FOR -L- PROFILE SEE SHEET 8  
★DESIGN EXCEPTION REQUIRED FOR DESIGN SPEED (50 MPH),  
MIN. HORIZONTAL CURVE RADIUS (610')  
AND HORIZONTAL STOPPING SIGHT DISTANCE (308').

06-MAR-2007 08:53:29 50\envr\environmental\design\b2950-r.dj-s06.psh  
A:\adison\A\REV\221502