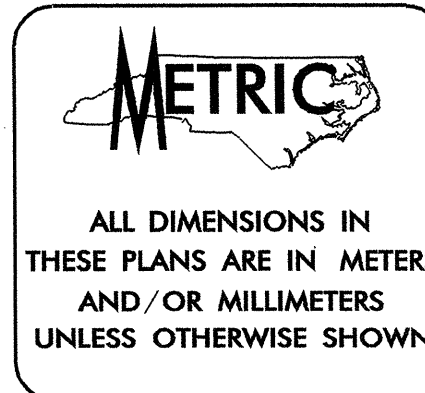
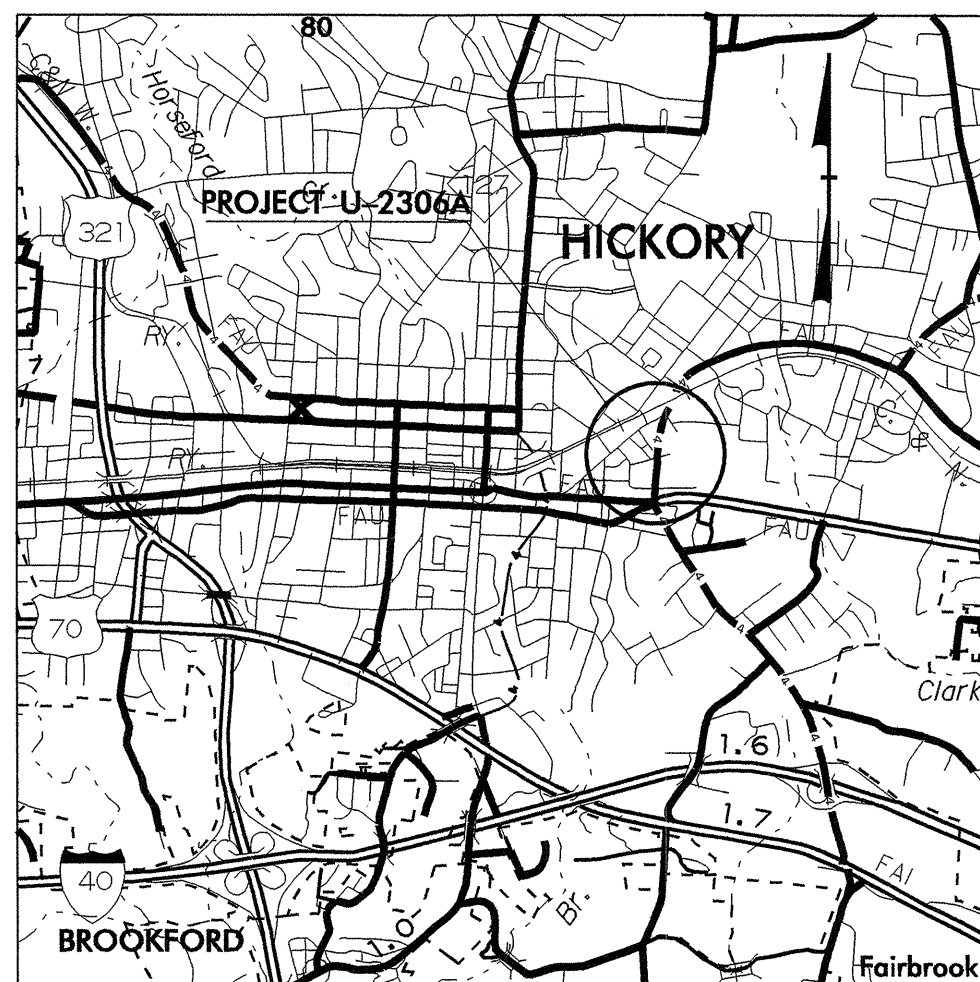


STATE OF NORTH CAROLINA
DIVISION OF HIGHWAYS



T.I.P. NO.	SHEET NO.
U-2306A	UC-1

See Sheet 1-A For Index of Sheets
See Sheet 1-B For Conventional Symbols



Vicinity of State Project U-2306A

**UTILITY CONSTRUCTION PLANS
CATAWBA COUNTY**

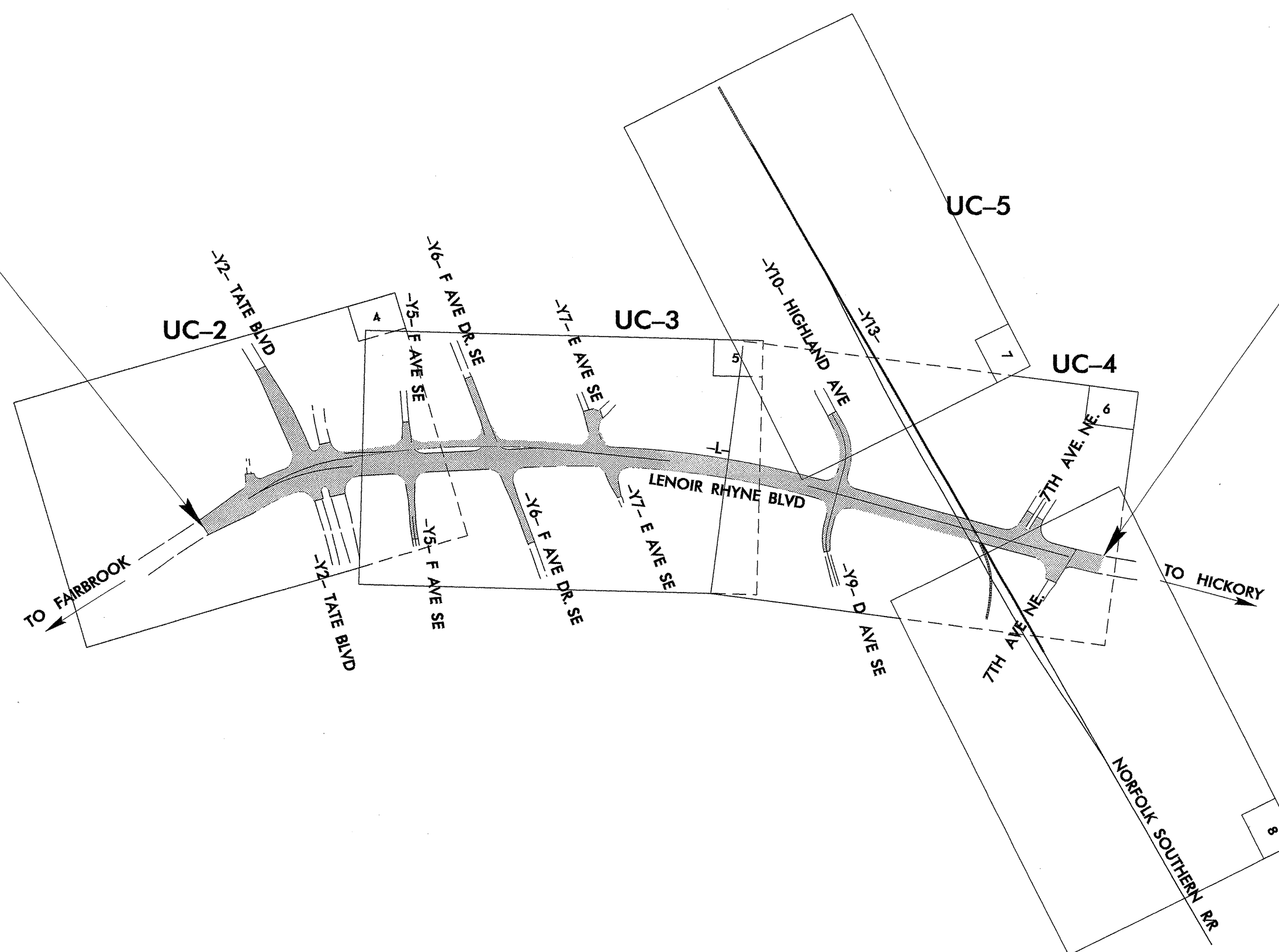
**LOCATION: LENOIR RHYNE BLVD. EXTENSION FROM
TATE BLVD. TO 7TH AVE. NE.**

TYPE OF WORK: WATER AND SEWER LINE RELOCATION



TIP: U-2306A

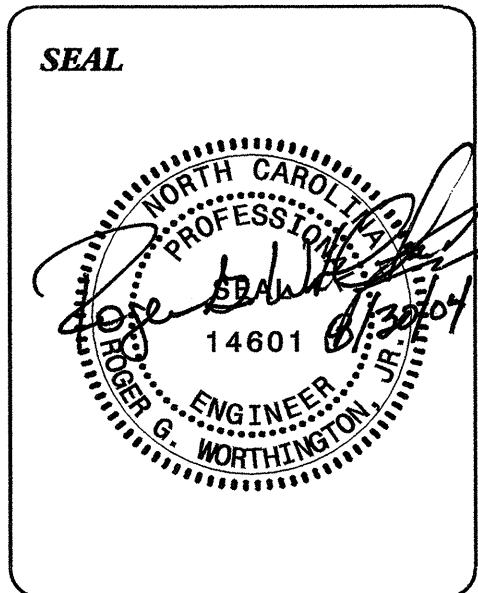
-L- POT STA. 10+73.873 BEGIN TIP U-2306A



-L- POT STA. 20+20.000 END TIP U-2306A

INDEX OF SHEETS	
SHEET NO.	DESCRIPTION
UC-1	TITLE SHEET
UC-2 THRU UC-5	UTILITY CONSTRUCTION PLAN SHEETS
UC-6 THRU UC-8	PROFILE SHEET(S)
UC-9	DETAILS SHEET(S)

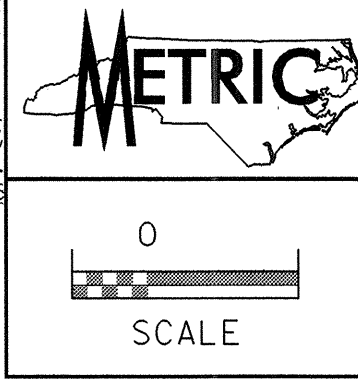
WATER AND SEWER OWNERS ON PROJECT
(1) WATER: CITY OF HICKORY
(2) SANITARY SEWER: CITY OF HICKORY
(3) WATER (PRIVATE LINES): SHERRILL FURNITURE INC.



PREPARED IN THE OFFICE OF:
**DIVISION OF HIGHWAYS
DESIGN SERVICES
UTILITY SECTION**

1591 MAIL SERVICES CENTER
RALEIGH, NC 27699-1591
PHONE (919) 250-4128
FAX (919) 250-4119

Roger Worthington, P.E. UTILITIES SECTION ENGINEER
Greg Stevens, P.E. UTILITIES SQUAD LEADER PROJECT ENGINEER
Bernie Bungartner UTILITIES PROJECT DESIGNER



UTILITY CONSTRUCTION

DATUM DESCRIPTION

THE LOCALIZED COORDINATE SYSTEM DEVELOPED FOR THIS PROJECT IS BASED ON THE STATE PLANE COORDINATES ESTABLISHED BY NCDOT FOR MONUMENT "U2306A-3001" WITH NAD 83 STATE PLANE GRID COORDINATES OF

NORTHING: 222140.654(m) EASTING: 399187.912(m)

THE AVERAGE COMBINED GRID FACTOR USED ON THIS PROJECT (GROUND TO GRID) IS: 0.999856075

THE N.C. LAMBERT GRID BEARING LOCALIZED HORIZONTAL GROUND DISTANCE FROM "U2306A-3001" TO -L- STATION 10+00.000 IS

229.2535m S 56° 18' 29.74" E

ALL LINEAR DIMENSIONS ARE LOCALIZED HORIZONTAL DISTANCES VERTICAL DATUM USED IS NGVD 29

- | | |
|--|---|
| 3 PETER ROWE
DB 1677 PG 811-812 | 15 GRACE KANIFE & LENNIE SEVER
DB 2003 PG 1220-1221 |
| 5 MURPHY SUDDERTH
DB 1199 PG 404
DB 339 PG 569 | 16 EVA JENNINGS
DB 1356 PG 915-916
DB 1331 PG 596 |
| 6 ELEANOR DAVIS
DB 1270 PG 992 | 17 WILLIAM H. CHAMBLEE
DB 1285 PG 440 |
| 9 CITY OF HICKORY
DB 1587 PG 237-238 | 18 DORIS BOST
DB 479 PG 350 |
| 10 BURRELL & MARCENIA BROWN
DB 756 PG 467 | |
| 12 NC STATE HIGHWAY COMMISSION
DB 908 PG 648 | |
| 13 MICHELLE L. DULA
DB 1651 PG 911 | |
| 14 AUDREY JOHNSTON
DB 1374 PG 938 | |

CONNECT USING NECESSARY FITTINGS

BEG. CONSTRUCTION
-Y2- POS Sta. 11+21.082

PROP. .46M - 300MM DI WATER PIPE, PC 2.41MPA
(1) - 300MM X 300MM DI TEE
(2) - 300MM GATE VALVE & VALVE BOX, 1.38MPA WP
(1) 300MM DI 45° BEND
(1) - 300MM X 150MM DI REDUCER
11M - 150MM DI WATER PIPE, 2.41MPA
(1) - 150MM DI 45° BEND

PROP. 10M - FILL OR REMOVE ABANDONED 150MM PIPE, CI WATER

PROP. 11M - 300MM DI WATER PIPE, PC 2.41MPA
(1) - 300MM GATE VALVE & VALVE BOX, 1.38MPA WP
(1) - 300MM DI 45° BEND
(1) - 300MM X 300MM DI TEE

PROFILE DRAWINGS FOR WATER LINES NO. 1 & 2 ARE SHOWN ON UTILITY CONSTRUCTION SHEET UC-6

PROP. (1) - RELOCATE EXISTING WATER METER
2.8M - 20MM COPPER WATER PIPE, TYPE K
(1) - 300MM X 20MM TAPPING SADDLE
(1) - 20MM CORPORATION STOP

PROP. 230M - FILL OR REMOVE ABANDONED 300MM PIPE, CI WATER

PROP. (1) - RELOCATE EXISTING WATER METER
5M - 20MM COPPER WATER PIPE, TYPE K
(1) - 300MM X 20MM TAPPING SADDLE
(1) - 20MM CORPORATION STOP

PROP. 32M - FILL OR REMOVE ABANDONED 150MM PIPE, CI WATER

PROP. 45M - FILL OR REMOVE ABANDONED 300MM, CI WATER

PROP. 16.9M - 150MM DI WATER PIPE, PC 2.41MPA
(1) - 300MM X 150MM DI TEE
(1) - 150MM DI 11 1/4° BEND
(1) - 150MM GATE VALVE & VALVE BOX, 1.38MPA WP

PROP. 192M - 300MM WATER PIPE, PC 2.41MPA
(4) - 300MM DI 45° BENDS
(2) - 300MM GATE VALVE & VALVE BOX, 1.38MPA WP

PROP. 46M - 600MM STEEL ENCASEMENT PIPE, 9.53MM THK., BY TRENCHLESS INSTALLATION

PROP. (1) - RELOCATE EXIST. FIRE HYDRANT
3M - 150MM DI WATER PIPE, PC 2.41MPA
(1) - 300MM X 150MM DI TEE
(1) - 150MM GATE VALVE & VALVE BOX, 1.38MPA WP

NOTE: SEE SHEET 2-B FOR CURVE DATA

NOTE: SEE SHEET 2-C AND 2-D FOR CONSTRUCTION OF DETOUR

MATCHLINE SEE SHEET UC-3

BEG. PROJECT U-2306A
-L- POT Sta. 10+73.873

-L- POT Sta. 10+00.000

-L- POC Sta. 11+94.962
-Y2- POC Sta. 12+37.461

-L- PC Sta. 1

31-AUG-2004 16:06 P:\Projects\2306A\UC-2\UC-2.dwg

METRIC

PROJECT REFERENCE NO. **U-2306A** SHEET NO. **UC-3**

DESIGNED BY: **BCB**

DRAWN BY: **BCB**

CHECKED BY: **RGW**

APPROVED BY: **RGW**

REVISED:

NORTH CAROLINA PROFESSIONAL ENGINEER SEAL 14601

NORTH CAROLINA DEPARTMENT OF TRANSPORTATION

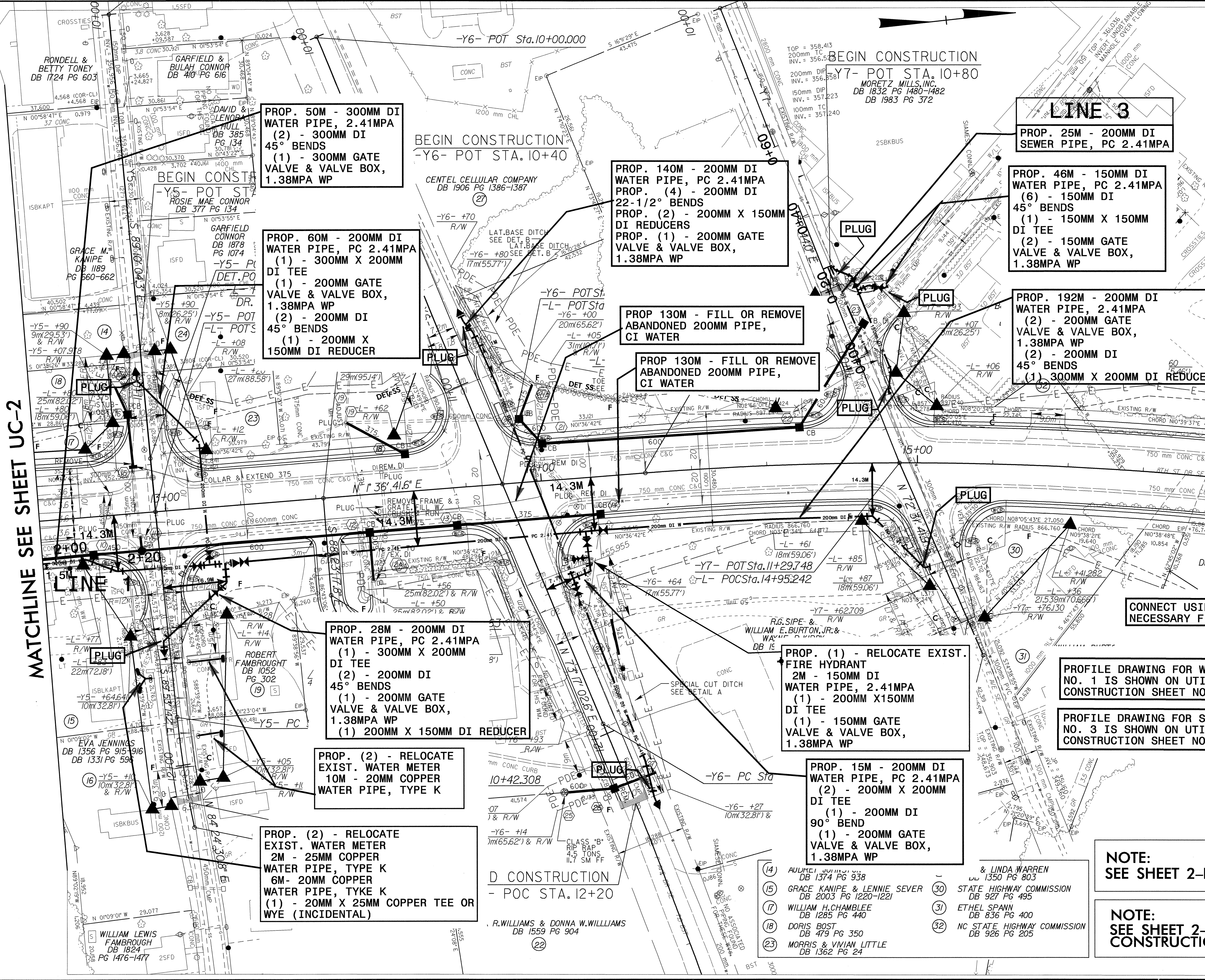
DESIGN SERVICES UNIT
PHONE: (919) 250-4128
FAX: (919) 250-4119

UTILITY CONSTRUCTION PLANS ONLY

SCALE

0

UTILITY CONSTRUCTION



PROP. 50M - 300MM DI WATER PIPE, 2.41MPA
(2) - 300MM DI 45° BENDS
(1) - 300MM GATE VALVE & VALVE BOX, 1.38MPA WP

PROP. 60M - 200MM DI WATER PIPE, PC 2.41MPA
(1) - 300MM X 200MM DI TEE
(1) - 200MM GATE VALVE & VALVE BOX, 1.38MPA WP
(2) - 200MM DI 45° BENDS
(1) - 200MM X 150MM DI REDUCER

PROP. 140M - 200MM DI WATER PIPE, PC 2.41MPA
PROP. (4) - 200MM DI 22-1/2° BENDS
PROP. (2) - 200MM X 150MM DI REDUCERS
PROP. (1) - 200MM GATE VALVE & VALVE BOX, 1.38MPA WP

LINE 3
PROP. 25M - 200MM DI SEWER PIPE, PC 2.41MPA

PROP. 46M - 150MM DI WATER PIPE, PC 2.41MPA
(6) - 150MM DI 45° BENDS
(1) - 150MM X 150MM DI TEE
(2) - 150MM GATE VALVE & VALVE BOX, 1.38MPA WP

PROP. 192M - 200MM DI WATER PIPE, 2.41MPA
(2) - 200MM GATE VALVE & VALVE BOX, 1.38MPA WP
(2) - 200MM DI 45° BENDS
(1) - 300MM X 200MM DI REDUCER

PROP 130M - FILL OR REMOVE ABANDONED 200MM PIPE, CI WATER

PROP 130M - FILL OR REMOVE ABANDONED 200MM PIPE, CI WATER

PROP. 28M - 200MM DI WATER PIPE, PC 2.41MPA
(1) - 300MM X 200MM DI TEE
(2) - 200MM DI 45° BENDS
(1) - 200MM GATE VALVE & VALVE BOX, 1.38MPA WP
(1) 200MM X 150MM DI REDUCER

PROP. (2) - RELOCATE EXIST. WATER METER
10M - 20MM COPPER WATER PIPE, TYPE K

PROP. (2) - RELOCATE EXIST. WATER METER
2M - 25MM COPPER WATER PIPE, TYPE K
6M - 20MM COPPER WATER PIPE, TYKE K
(1) - 20MM X 25MM COPPER TEE OR WYE (INCIDENTAL)

PROP. (1) - RELOCATE EXIST. FIRE HYDRANT
2M - 150MM DI WATER PIPE, 2.41MPA
(1) - 200MM X 150MM DI TEE
(1) - 150MM GATE VALVE & VALVE BOX, 1.38MPA WP

PROP. 15M - 200MM DI WATER PIPE, PC 2.41MPA
(2) - 200MM X 200MM DI TEE
(1) - 200MM DI 90° BEND
(1) - 200MM GATE VALVE & VALVE BOX, 1.38MPA WP

CONNECT USING NECESSARY FITTINGS

PROFILE DRAWING FOR WATER LINE NO. 1 IS SHOWN ON UTILITY CONSTRUCTION SHEET NO. UC-6

PROFILE DRAWING FOR SEWER LINE NO. 3 IS SHOWN ON UTILITY CONSTRUCTION SHEET NO. UC-6

NOTE:
SEE SHEET 2-B FOR CURVE DATA

NOTE:
SEE SHEET 2-C AND 2-D FOR CONSTRUCTION OF DETOUR

- (14) AURELI JENNINGS DB 1374 PG 938
- (15) GRACE KANIPE & LENNIE SEVER DB 2003 PG 1220-1221
- (17) WILLIAM H. CHAMBLEE DB 1285 PG 440
- (18) DORIS BOST DB 479 PG 350
- (23) MORRIS & VIVIAN LITTLE DB 1362 PG 24
- (30) STATE HIGHWAY COMMISSION DB 927 PG 495
- (31) ETHEL SPANN DB 836 PG 400
- (32) NC STATE HIGHWAY COMMISSION DB 926 PG 205

D CONSTRUCTION
- POC STA. 12+20

R.WILLIAMS & DONNA W.WILLIAMS
DB 1559 PG 904

MATCHLINE SEE SHEET UC-2

MATCHLINE SEE SHEET UC-4

L- PROFILE SHEET 9
Y5- PROFILE SHEET 12
Y6- PROFILE SHEET 12
Y7- PROFILE SHEET 13
DR 1- PROFILE SHEET 10

07 030497
042397
RW REVISION - 10/201 - ADDED TEMPORARY CONSTRUCTION EASEMENT TO AREAS AFFECTED BY RAILROAD DESIGN.

NOTE:
CONTRACTOR SHALL FOLLOW ALL REQUIREMENTS
OF NORFOLK SOUTHERN'S NSCE-8 SPECIFICATIONS
PIPE LINE AND CROSSING TO BE INSTALLED
AND MAINTAINED IN ACCORDANCE WITH LAST
APPROVED AMERICAN RAILWAY ENGINEERING
AND MAINTENANCE OF WAY ASSOCIATION
SPECIFICATIONS FOR PIPELINES CONVEYING
FLAMMABLE AND NON-FLAMMABLE SUBSTANCES.
BLASTING NOT PERMITTED

METRIC

PROJECT REFERENCE NO. U-2306A SHEET NO. UC-4

DESIGNED BY: BCB
DRAWN BY: BCB
CHECKED BY: RGW
APPROVED BY: RGW
REVISED:

NORTH CAROLINA PROFESSIONAL ENGINEER
14601
G. WORTHINGTON

NORTH CAROLINA DEPARTMENT OF TRANSPORTATION
DESIGN SERVICES UNIT
PHONE: (919)250-4128
FAX: (919)250-4119

UTILITY CONSTRUCTION PLANS ONLY

SCALE

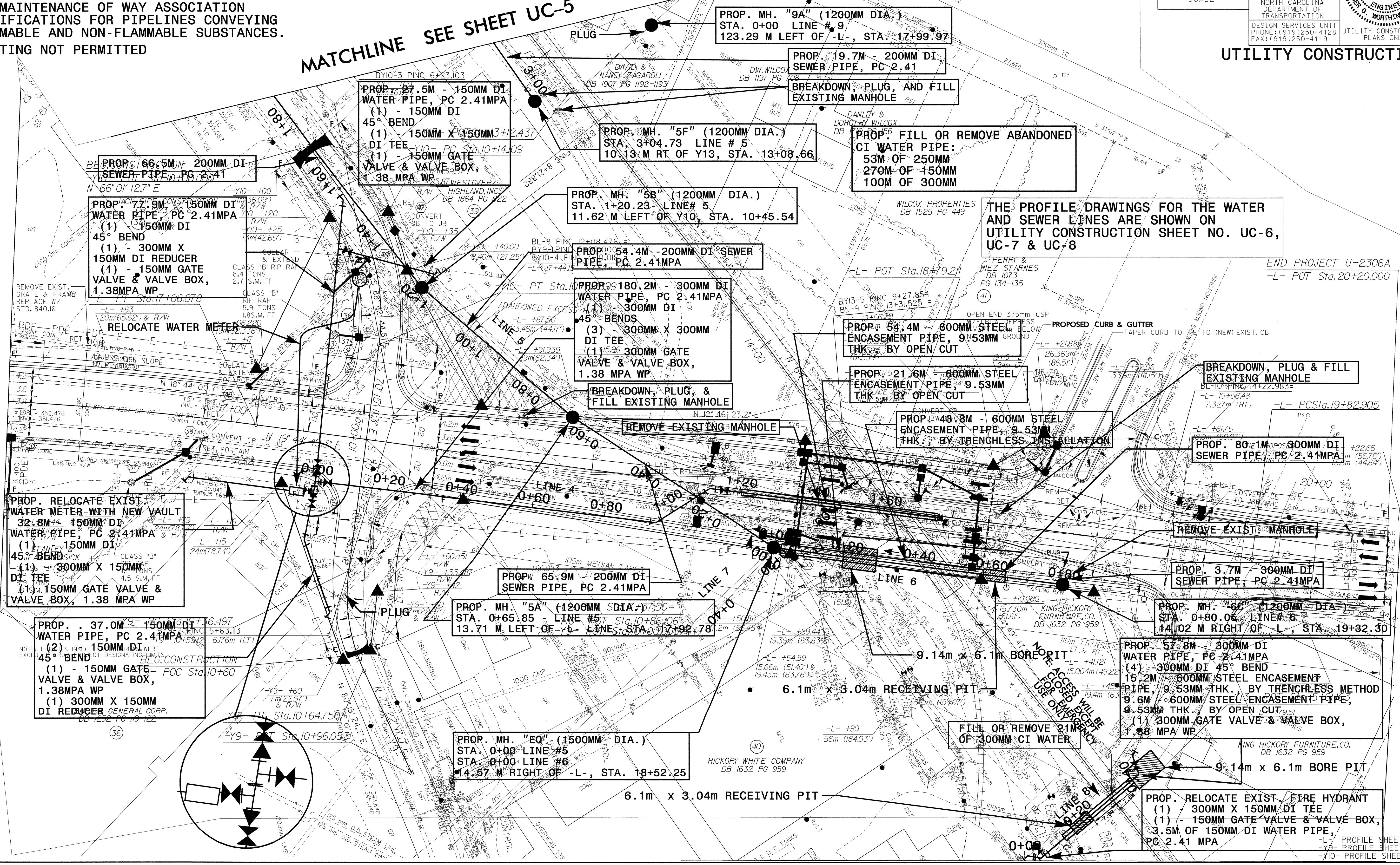
MATCHLINE SEE SHEET UC-5

MATCHLINE SEE SHEET UC-3

UTILITY CONSTRUCTION

THE PROFILE DRAWINGS FOR THE WATER AND SEWER LINES ARE SHOWN ON UTILITY CONSTRUCTION SHEET NO. UC-6, UC-7 & UC-8

END PROJECT U-2306A
-L- POT Sta.20+20.000



PROP. RELOCATE EXIST. WATER METER WITH NEW VAULT
32.8M ± 150MM DI WATER PIPE, PC 2.41MPA
(1) 150MM DI 45° BEND
(1) 300MM X 150MM DI TEE
(1) 150MM GATE VALVE & VALVE BOX, 1.38 MPA WP

PROP. 77.9M ± 150MM DI WATER PIPE, PC 2.41MPA
(1) 150MM DI 45° BEND
(1) 300MM X 150MM DI REDUCER
(1) 150MM GATE VALVE & VALVE BOX, 1.38MPA WP

PROP. 27.5M ± 150MM DI WATER PIPE, PC 2.41MPA
(1) 150MM DI 45° BEND
(1) 150MM X 150MM DI TEE
(1) 150MM GATE VALVE & VALVE BOX, 1.38 MPA WP

PROP. MH. "5F" (1200MM DIA.)
STA. 3+04.73 LINE # 5
10.13 M RT OF Y13, STA. 13+08.66

PROP. 99.180.2M ± 300MM DI WATER PIPE, PC 2.41MPA
(1) 300MM DI 45° BENDS
(3) 300MM X 300MM DI TEE
(1) 300MM GATE VALVE & VALVE BOX, 1.38 MPA WP

PROP. MH. "9A" (1200MM DIA.)
STA. 0+00 LINE # 9
123.29 M LEFT OF -L-, STA. 17+99.97

PROP. 19.7M ± 200MM DI SEWER PIPE, PC 2.41
BREAKDOWN, PLUG, AND FILL EXISTING MANHOLE

PROP. FILL OR REMOVE ABANDONED CI WATER PIPE:
53M OF 250MM
270M OF 150MM
100M OF 300MM

PROP. 54.4M ± 600MM STEEL ENCASEMENT PIPE, 9.53MM THK. BY OPEN CUT

PROP. 21.6M ± 600MM STEEL ENCASEMENT PIPE, 9.53MM THK. BY TRENCHLESS INSTALLATION

BREAKDOWN, PLUG & FILL EXISTING MANHOLE
BL-10 PINE 14+22.983
-L- 19+56.48
7.327m (RT) -L- PCSta.19+82.905

PROP. 80.1M ± 300MM DI SEWER PIPE, PC 2.41MPA

PROP. 3.7M ± 300MM DI SEWER PIPE, PC 2.41MPA

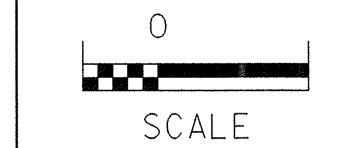
PROP. MH. "5C" (1200MM DIA.)
STA. 0+80.05 LINE # 6
14.02 M RIGHT OF -L-, STA. 19+32.30

PROP. 57.8M ± 300MM DI WATER PIPE, PC 2.41MPA
(4) 300MM DI 45° BEND
15.2M 600MM STEEL ENCASEMENT PIPE, 9.53MM THK. BY TRENCHLESS METHOD
9.6M 600MM STEEL ENCASEMENT PIPE, 9.53MM THK. BY OPEN CUT
(1) 300MM GATE VALVE & VALVE BOX, 1.38 MPA WP

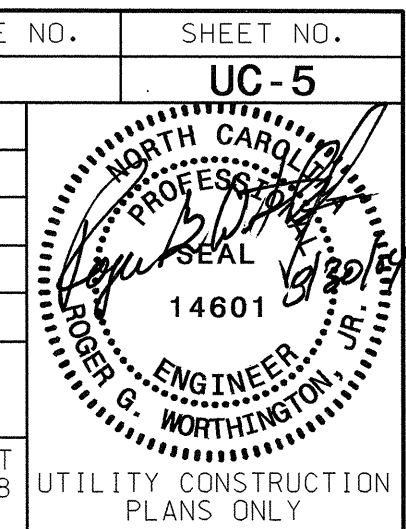
PROP. RELOCATE EXIST. FIRE HYDRANT
(1) 300MM X 150MM DI TEE
(1) 150MM GATE VALVE & VALVE BOX,
3.5M OF 150MM DI WATER PIPE, PC 2.41 MPA

-L- PROFILE SHEET 10
-Y9- PROFILE SHEET 13
-Y10- PROFILE SHEET 13

07.1894.67



PROJECT REFERENCE NO.	UC-5
DESIGNED BY:	BCB
DRAWN BY:	BCB
CHECKED BY:	RGW
APPROVED BY:	RGW
REVISED:	
NORTH CAROLINA DEPARTMENT OF TRANSPORTATION	
DESIGN SERVICES UNIT PHONE: (919) 250-4128 FAX: (919) 250-4119	
UTILITY CONSTRUCTION PLANS ONLY	

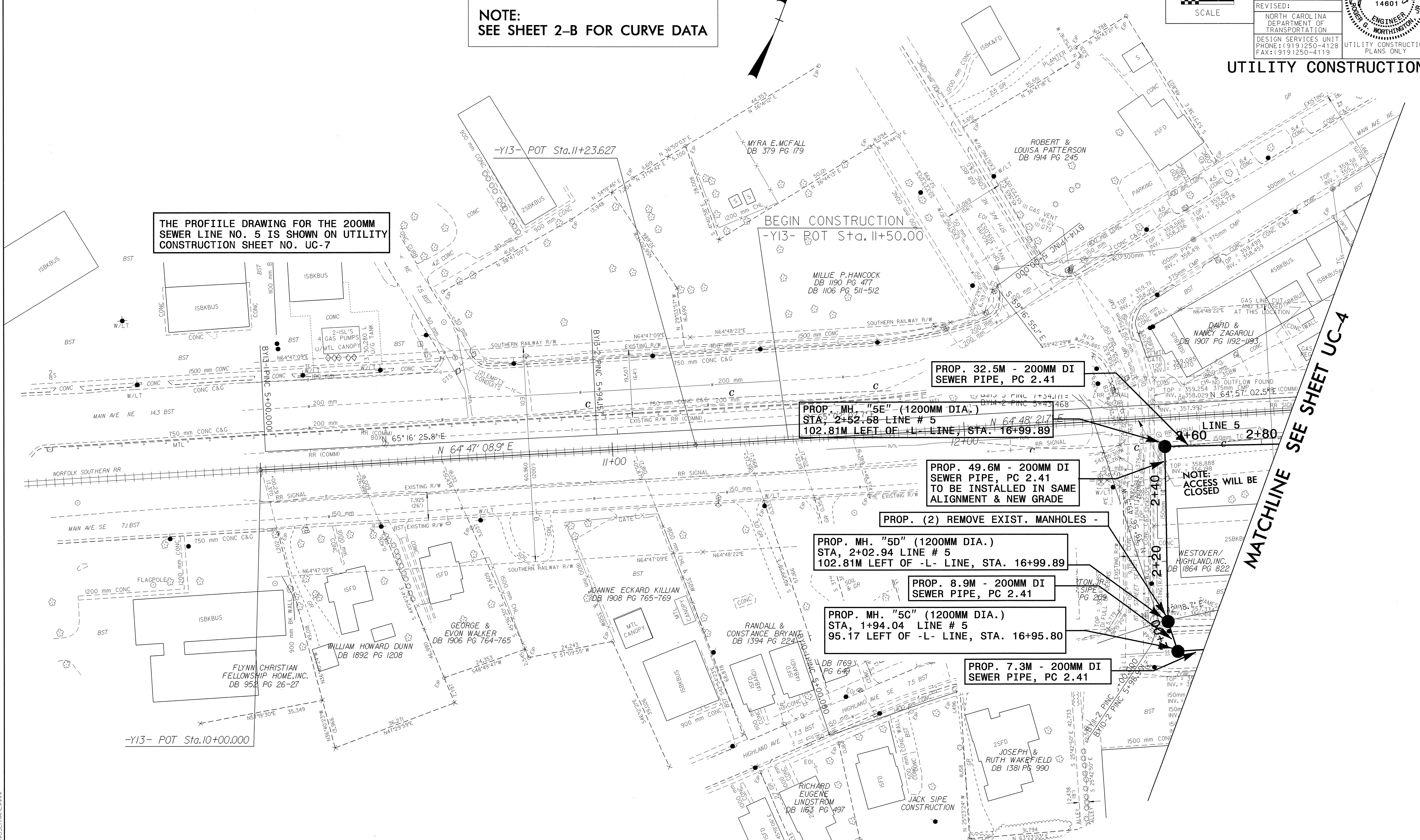


NOTE:
SEE SHEET 2-B FOR CURVE DATA

THE PROFILE DRAWING FOR THE 200MM SEWER LINE NO. 5 IS SHOWN ON UTILITY CONSTRUCTION SHEET NO. UC-7

BEGIN CONSTRUCTION
-Y13- POT Sta. 11+50.00

UTILITY CONSTRUCTION



PROP. 32.5M - 200MM DI SEWER PIPE, PC 2.41

PROP. MH. "5E" (1200MM DIA.)
STA. 2+52.58 LINE # 5
102.81M LEFT OF -L- LINE, STA. 16+99.89

PROP. 49.6M - 200MM DI SEWER PIPE, PC 2.41
TO BE INSTALLED IN SAME ALIGNMENT & NEW GRADE

PROP. (2) REMOVE EXIST. MANHOLES -

PROP. MH. "5D" (1200MM DIA.)
STA. 2+02.94 LINE # 5
102.81M LEFT OF -L- LINE, STA. 16+99.89

PROP. 8.9M - 200MM DI SEWER PIPE, PC 2.41

PROP. MH. "5C" (1200MM DIA.)
STA. 1+94.04 LINE # 5
95.17 LEFT OF -L- LINE, STA. 16+95.80

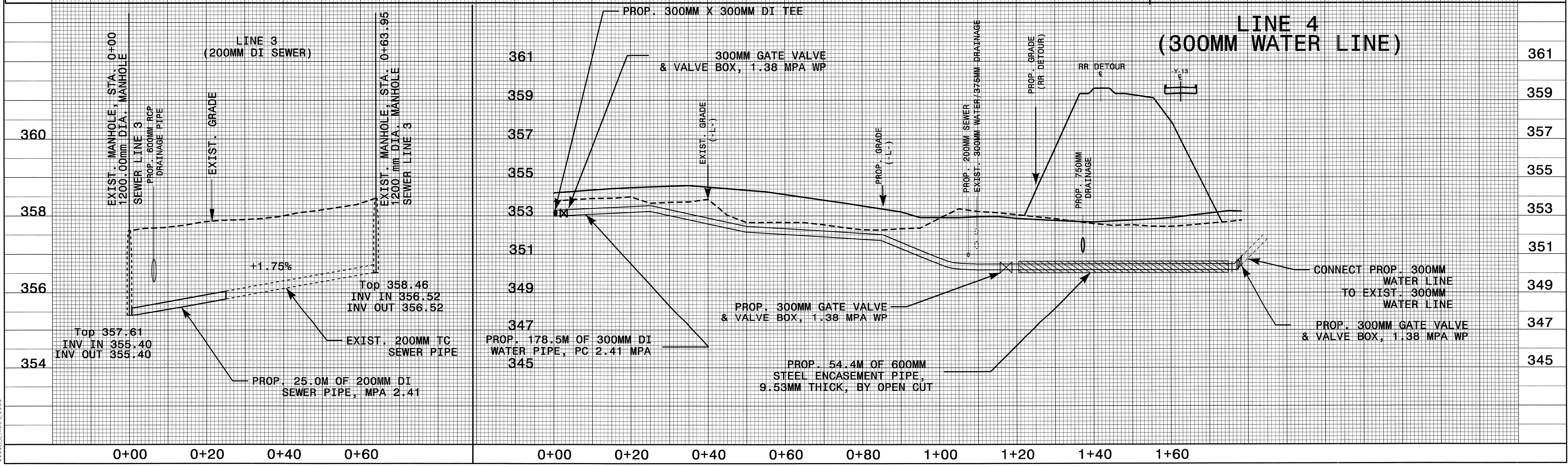
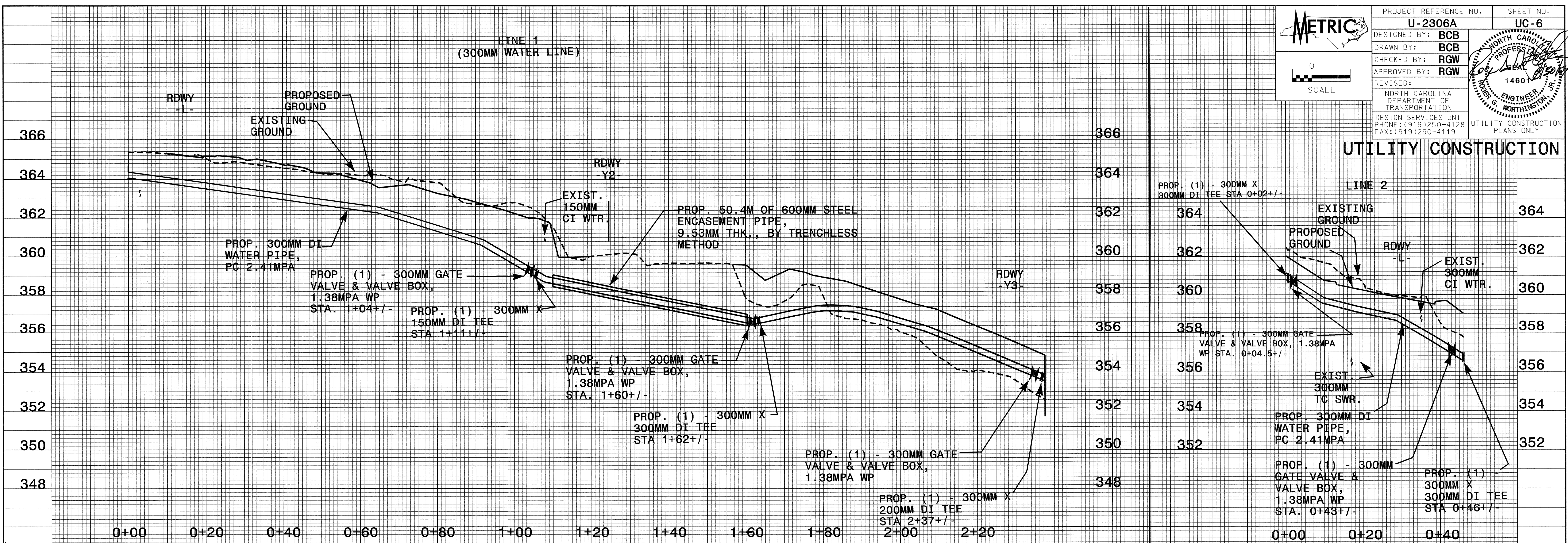
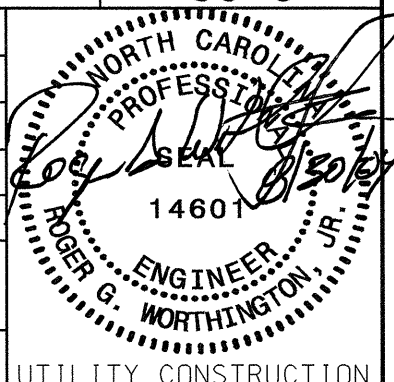
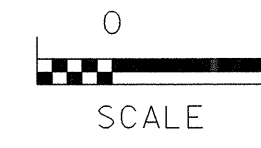
PROP. 7.3M - 200MM DI SEWER PIPE, PC 2.41

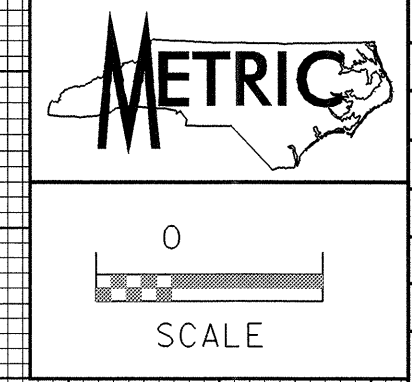
NOTE: ACCESS WILL BE CLOSED

MATCHLINE SEE SHEET UC-4



PROJECT REFERENCE NO.	SHEET NO.
U-2306A	UC-6
DESIGNED BY: BCB	
DRAWN BY: RGW	
CHECKED BY: RGW	
APPROVED BY: RGW	
REVISED:	
NORTH CAROLINA DEPARTMENT OF TRANSPORTATION	
DESIGN SERVICES UNIT PHONE: (919)250-4128 FAX: (919)250-4119	
UTILITY CONSTRUCTION PLANS ONLY	

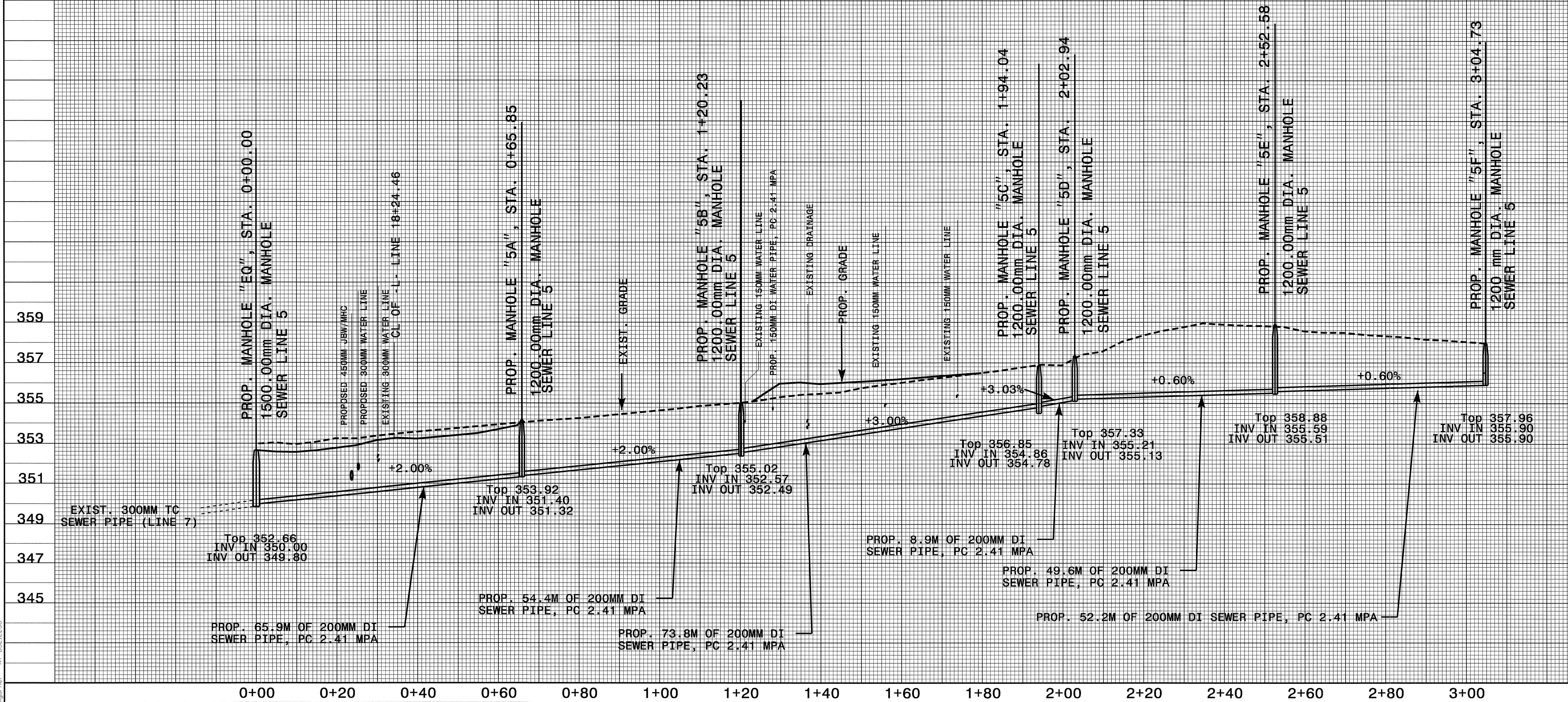




PROJECT REFERENCE NO.	SHEET NO.
U-2306A	UC-7
DESIGNED BY: BCB	
DRAWN BY: BCB	
CHECKED BY: RGW	
APPROVED BY: RGW	
REVISED:	
NORTH CAROLINA DEPARTMENT OF TRANSPORTATION DESIGN SERVICES UNIT PHONE: (919)250-4128 FAX: (919)250-4119	
UTILITY CONSTRUCTION PLANS ONLY	

UTILITY CONSTRUCTION

LINE 5 (200MM SEWER LINE)



B:\11-25-AUG-2004 10:45 AM\112306A.ut.upr.Y17.dgn
 bburgarner

METRIC

PROJECT REFERENCE NO. **U-2306A** SHEET NO. **UC-9**

DESIGNED BY: **BCB**

DRAWN BY: **BCB**

CHECKED BY: **RGW**

APPROVED BY: **RGW**

REVISED:

NORTH CAROLINA DEPARTMENT OF TRANSPORTATION

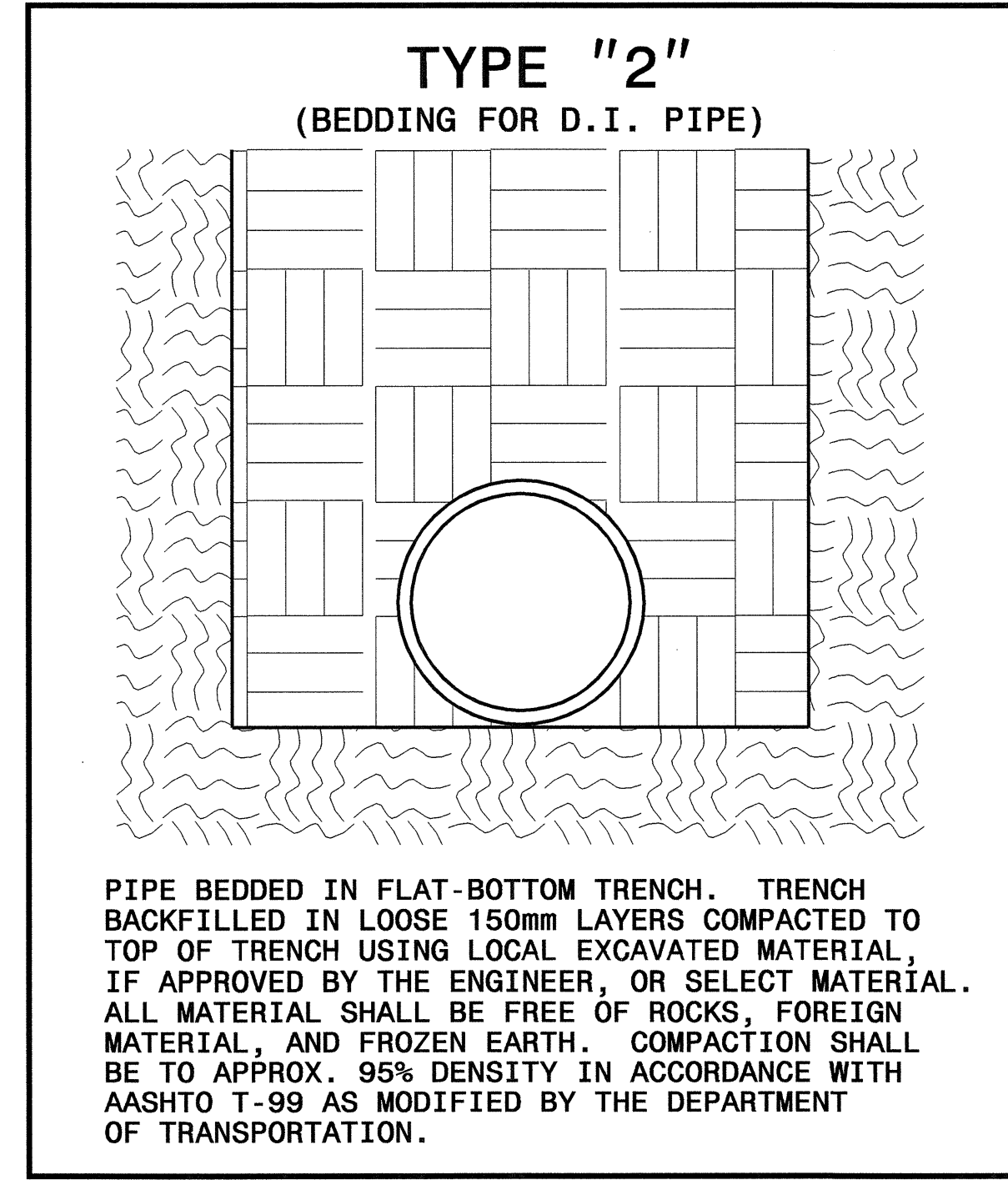
DESIGN SERVICES UNIT
PHONE: (919)250-4128
FAX: (919)250-4119

UTILITY CONSTRUCTION PLANS ONLY

0
SCALE
NOT TO SCALE

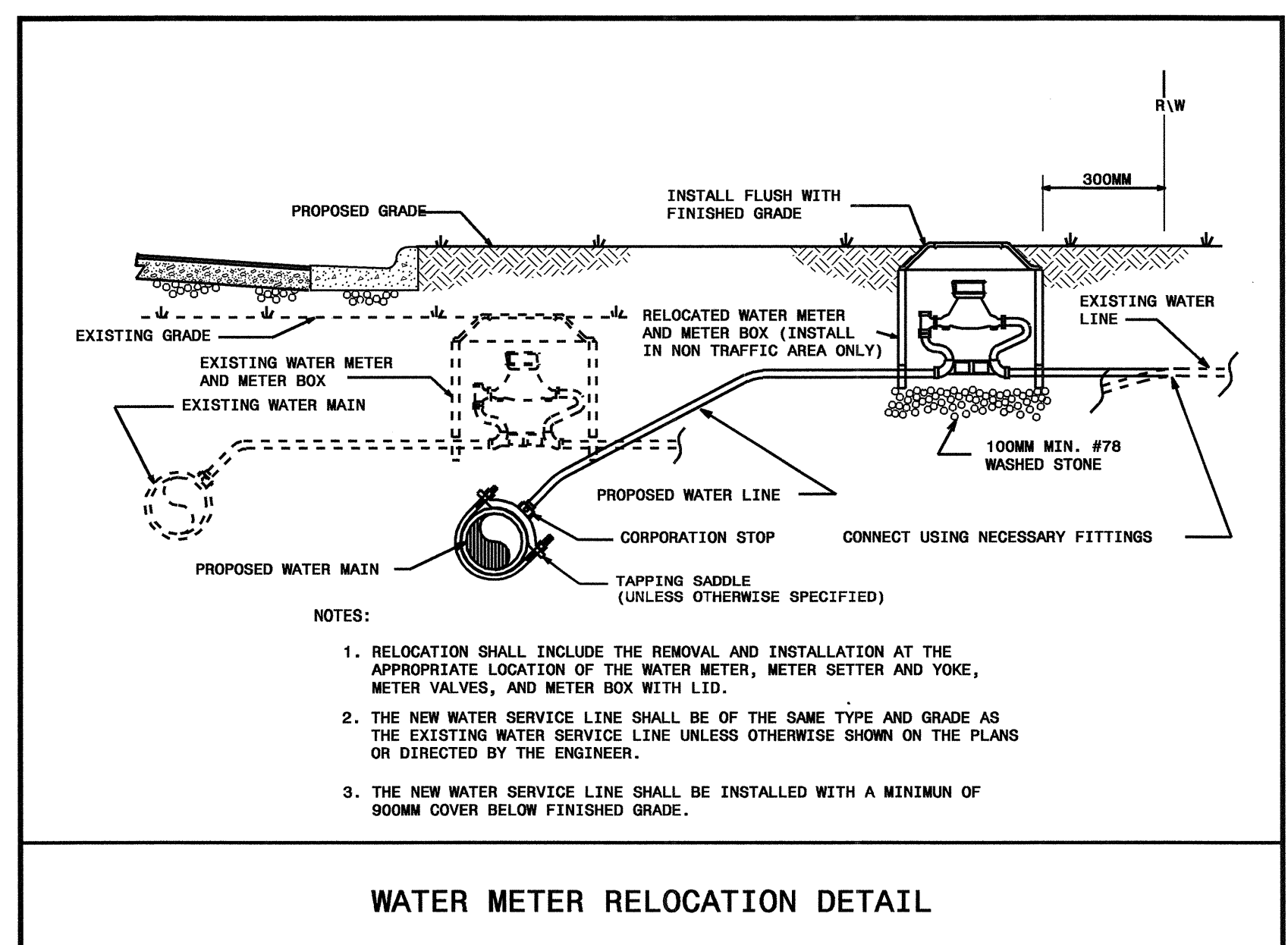
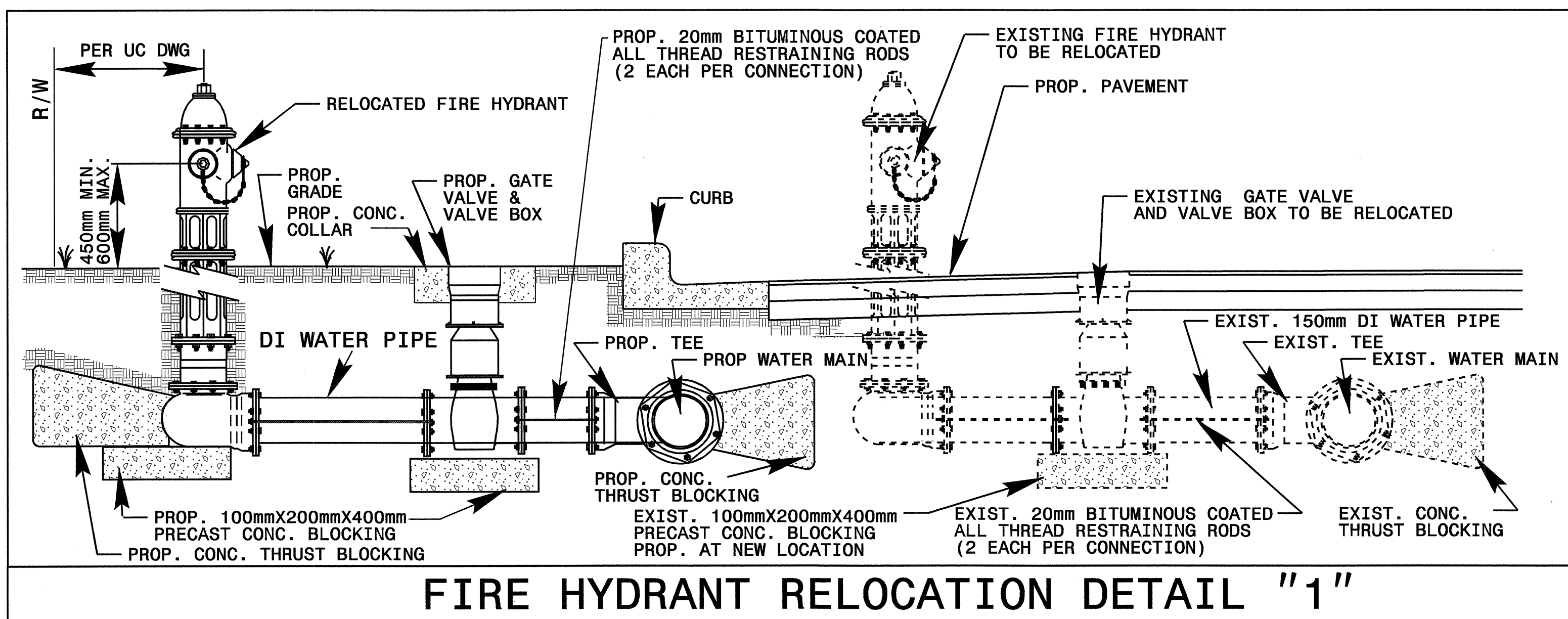
14601
ENGINEER
WORTHINGTON, NC

UTILITY CONSTRUCTION

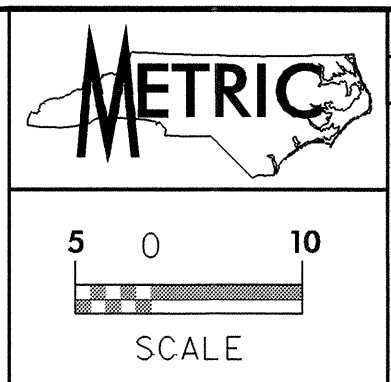


MAXIMUM TRENCH WIDTH AT TOP OF PIPE

NOMINAL PIPE SIZE (mm)	TRENCH WIDTH (meters)	NOMINAL PIPE SIZE (mm)	TRENCH WIDTH (meters)
102	0.72	508	1.12
152	0.76	610	1.22
203	0.81	762	1.37
254	0.86	914	1.57
305	0.91	1067	1.68
356	0.97	1219	1.83
406	1.02	1400	1.98
457	1.07		



04/25/04
 R:\UT\11-24-AUG-2004\664\U-2306A\UT_UC.dwg
 bbgarnier



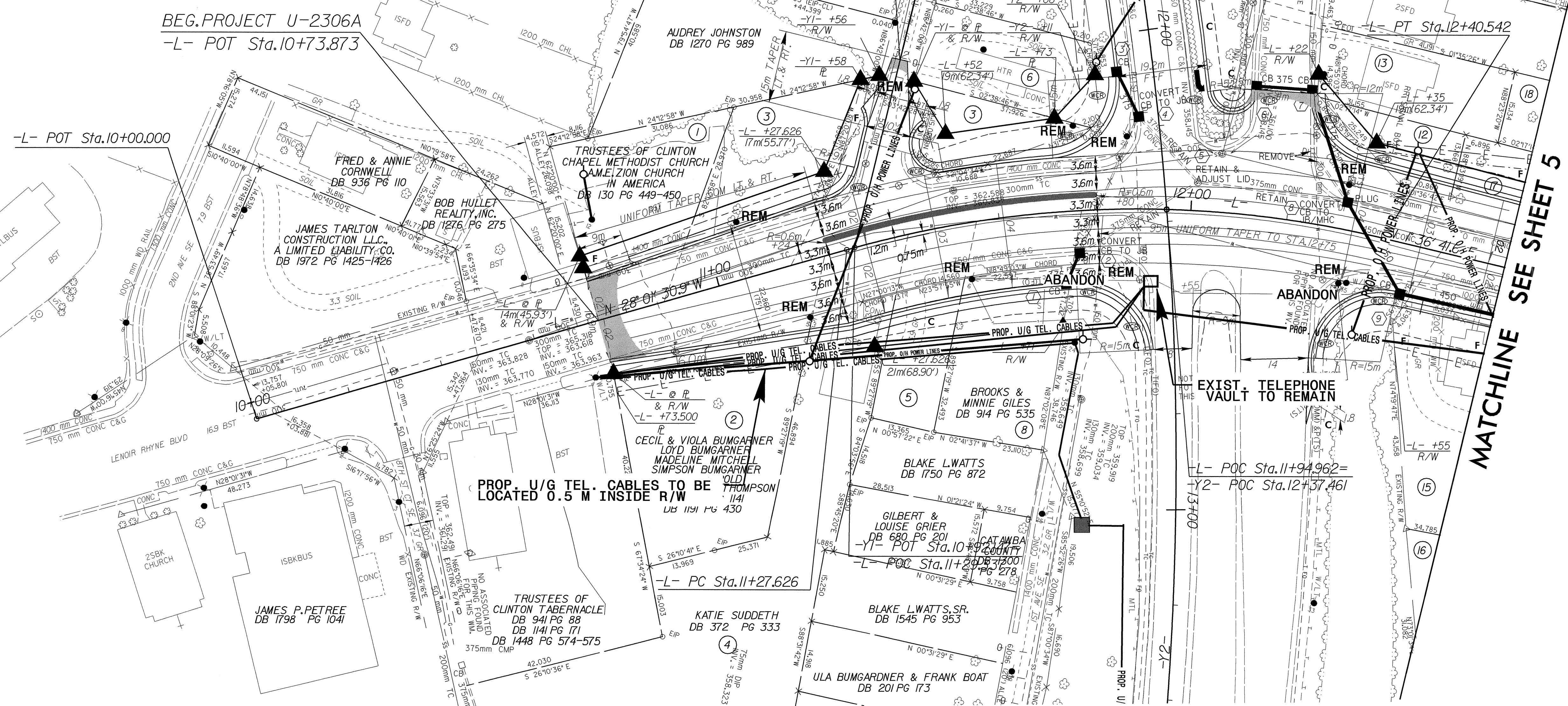
UTILITIES BY OTHERS

NOTE: ALL PROPOSED UTILITY WORK SHOWN ON THIS SHEET WILL BE DONE BY OTHERS

DATUM DESCRIPTION

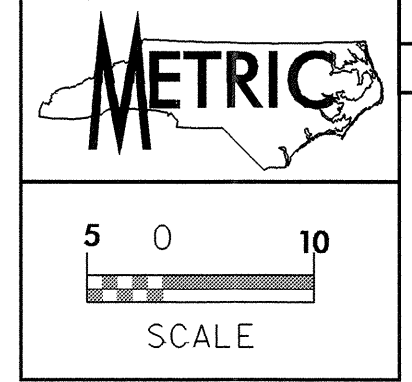
THE LOCALIZED COORDINATE SYSTEM DEVELOPED FOR THIS PROJECT IS BASED ON THE STATE PLANE COORDINATES ESTABLISHED BY NCDOT FOR MONUMENT "U2306A-5001" WITH NAD 83 STATE PLANE GRID COORDINATES OF NORTHING: 222140.654(m) EASTING: 399187.912(m) THE AVERAGE COMBINED GRID FACTOR USED ON THIS PROJECT (GROUND TO GRID) IS: 0.999856075 THE N.C. LAMBERT GRID BEARING LOCALIZED HORIZONTAL GROUND DISTANCE FROM "U2306A-5001" TO -L- STATION 10+00.000 IS 229.2335m S 36° 18' 29.74" E ALL LINEAR DIMENSIONS ARE LOCALIZED HORIZONTAL DISTANCES VERTICAL DATUM USED IS NGVD 29

- ③ PETER ROWE DB 1677 PG 811-812
- ⑤ MURPHY SUDDERTH DB 1199 PG 404 DB 339 PG 569
- ⑥ ELEANOR DAVIS DB 1270 PG 992
- ⑨ CITY OF HICKORY DB 1587 PG 237-238
- ⑩ BURRELL & MARCENIA BROWN DB 756 PG 467
- ⑫ NC STATE HIGHWAY COMMISSION DB 908 PG 648
- ⑬ MICHELLE L. DULA DB 1651 PG 911
- ⑭ AUDREY JOHNSTON DB 1374 PG 938
- ⑮ GRACE KANIPE & LENNIE SEVER DB 2003 PG 1220-1221
- ⑯ EVA JENNINGS DB 1356 PG 915-916 DB 1331 PG 596
- ⑰ WILLIAM H. CHAMBLEE DB 1285 PG 440
- ⑱ DORIS BOST DB 479 PG 350



MATCHLINE SEE SHEET 5

-L- PROFILE SHEET 9
-Y1- PROFILE SHEET 10
-Y2- PROFILE SHEET 11



UTILITIES BY OTHERS

NOTE: ALL PROPOSED UTILITY WORK SHOWN ON THIS SHEET WILL BE DONE BY OTHERS

NOTE: SEE SHEET 2-B FOR CURVE DATA

MATCHLINE SEE SHEET 7

MATCHLINE SEE SHEET 5

MATCHLINE SEE SHEET 8

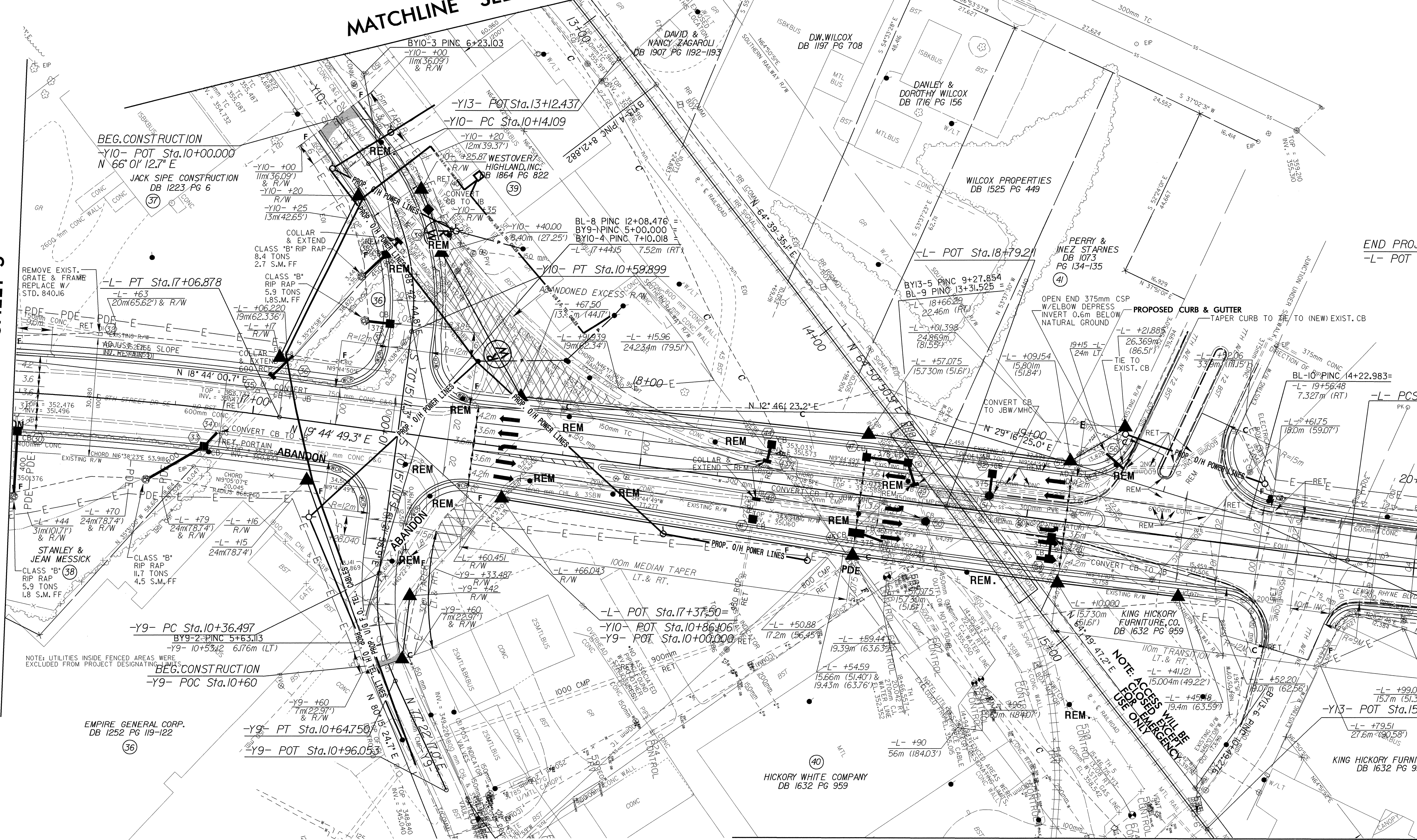
END PROJECT U-2306A
-L- POT Sta.20+20.000

MATCHLINE SEE SHEET 8

-L- PROFILE SHEET 10
-Y9- PROFILE SHEET 13
-Y10- PROFILE SHEET 13

RW REVISION - 101201 - ADDED TEMPORARY CONSTRUCTION EASEMENT TO AREAS AFFECTED BY RAILROAD DESIGN.

56-AUG-2004 (453) U-2306A.dwg
R:\U-2306A\Drawings\UO-3.dwg
B:\Users\j...
b...
b...



BEG. CONSTRUCTION
-Y10- POT Sta.10+00.000
N 66° 01' 12.7" E

JACK SIPE CONSTRUCTION
DB 1223 PG 6

-L- PT Sta.17+06.878
-L- +63
20m(65.62') & R/W

STANLEY & JEAN MESSICK
CLASS "B" RIP RAP
5.9 TONS
1.8 S.M. FF

-Y9- PC Sta.10+36.497
BY9-2-PINC 5+63.113
-Y9- 10+53.12 6.176m (LT)

BEG. CONSTRUCTION
-Y9- POC Sta.10+60

-Y9- PT Sta.10+64.750
-Y9- POT Sta.10+96.053

-Y13- POT Sta.13+12.437
-Y10- PC Sta.10+14.109

-Y10- +00
11m(36.09') & R/W

-Y10- +20
13m(42.65') & R/W

-Y10- +40.00
13.40m (44.11')

-Y10- PT Sta.10+59.899

-L- +67.50
13.32m (44.11')

-L- +91.239
19m(62.34')

-L- +15.96
24.23m (79.51')

-L- POT Sta.17+37.50
-Y10- POT Sta.10+86.106
-Y9- POT Sta.10+00.000

-L- +50.88
17.2m (56.45')

-L- +59.44
19.39m (63.63')

-L- +54.59
15.66m (51.40') &
19.43m (63.76')

-L- +90
56m (184.03')

-L- POT Sta.18+79.21

BY13-5 PINC 9+27.854
BL-9 PINC 13+31.525 =
18+66.29
22.46m (73.85')

-L- +01.398
24.859m (81.559')

-L- +57.075
15.730m (51.61')

-L- +09.154
15.801m (51.84')

-L- +19.000
25.0' E

-L- +10.000

-L- +15.730m (51.61')

-L- +41.121
15.004m (49.22')

-L- +45.8
19.4m (63.59')

-L- +99.07
15.7m (51.35')

-Y13- POT Sta.15+61.163
-L- +79.51
27.6m (90.58')

BL-10 PINC 14+22.983=
-L- 19+56.48
7.327m (24.03')

-L- +61.75
18.0m (59.07')

-L- +22.66
17.3m (56.76') &
13.6m (44.64')

-L- +19.000
25.0' E

-L- +10.000

-L- +15.730m (51.61')

-L- +41.121
15.004m (49.22')

-L- +45.8
19.4m (63.59')

-L- +99.07
15.7m (51.35')

-Y13- POT Sta.15+61.163
-L- +79.51
27.6m (90.58')

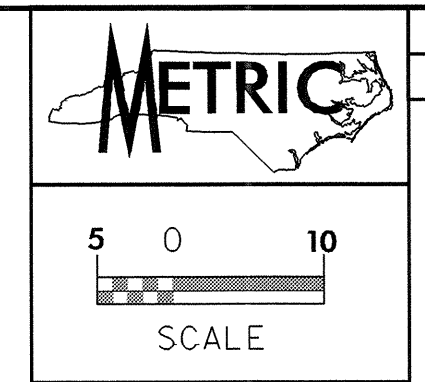
NOTE: ACCESS WILL BE
EXCEPT IN EMERGENCY
USE ONLY

OT 00000000

OT 00000000

OT 00000000

OT 00000000



UTILITIES BY OTHERS

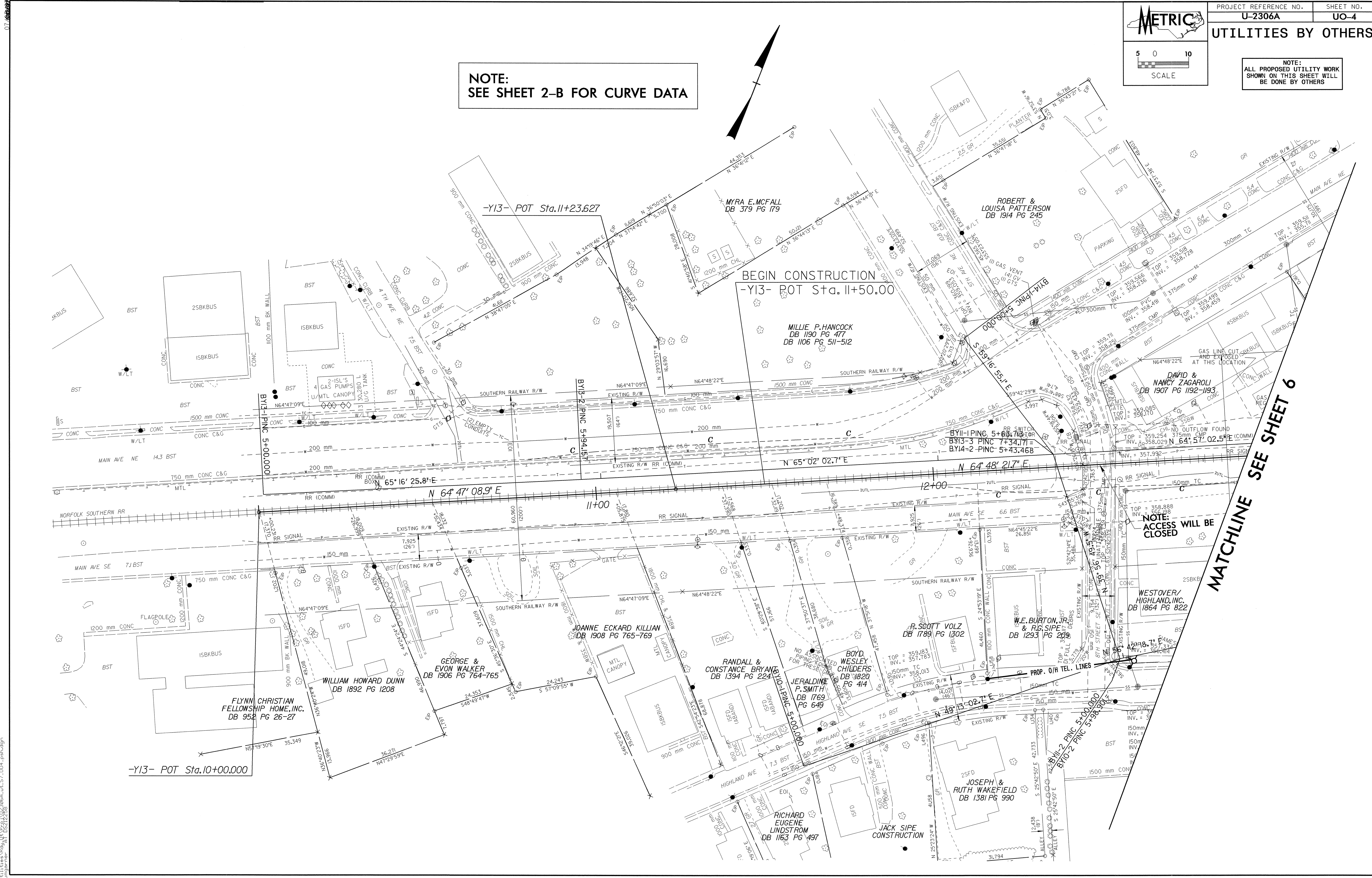
NOTE: ALL PROPOSED UTILITY WORK SHOWN ON THIS SHEET WILL BE DONE BY OTHERS

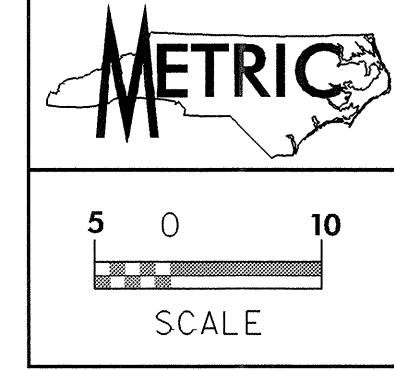
NOTE: SEE SHEET 2-B FOR CURVE DATA

BEGIN CONSTRUCTION -Y13- POT Sta. 11+50.00

MATCHLINE SEE SHEET 6

NOTE: ACCESS WILL BE CLOSED





UTILITIES BY OTHERS

NOTE: ALL PROPOSED UTILITY WORK SHOWN ON THIS SHEET WILL BE DONE BY OTHERS

-L- POT Sta. 20+86.379

-L- PT Sta. 20+57.472

MATCHLINE SEE SHEET 6

NOTE: SEE SHEET 2-B FOR CURVE DATA

PNR, INC. DB 1683 PG 283-286

END CONSTRUCTION -Y13- POT Sta. 17+50.00

-Y13- POT Sta. 16+80.902

KING HICKORY FURNITURE, CO. DB 154 PG 498

DUMONDE, INC. DB 1151 PG 123

CHARLES & SHERRY LINGLE DB 1862 PG 1367 DB 218 PG 285 DB 1926 PG 1417

HAROLD & LINDA GREENE DB 1882 PG 705

CRANFORD WOODCARVING, INC. DB 1370 PG 578

HICKORY WHITE COMPANY DB 1612 PG 117-118

HICKORY CHAIR COMPANY DB 370 PG 36-37 DB 611 PG 293

HICKORY CHAIR COMPANY DB 370 PG 36-37 DB 611 PG 293

MATCHLINE SEE SHEET 6