





PROJECT NO.	SHEET NO.	TOTAL NO.
3CR.10821.44	3	
3CR.10311.44		

## SUMMARY OF QUANTITIES

PROJECT NO	COUNTY	MAP NO	ROUTE	DESCRIPTION	TYP NO	LENGTH MI	WIDTH FT	PATCHING EXISTING PAVEMENT (FULL DEPTH) TONS
3CR.10821.44	Sampson	1	US 421	PENDER CO. LINE TO DUPLIN COUNTY LINE	1 OR 2	4.9	24	4,400
		"	"	FULL WIDTH	1 OR 2	0.32	38	
		"	"	TAPER 24' - 37'	1 OR 2	0.13	30.5	
		"	"	TAPER 24' - 38'	1 OR 2	0.26	31	
		"	"	TAPER 24' - 39'	1 OR 2	0.07	31.5	
		"	"	TAPER 37' - 38'	1 OR 2	0.12	37.5	
		"	"	TAPER 37' - 39'	1 OR 2	0.16	38	
<b>TOTAL FOR MAP NO. 1</b>						<b>4.9</b>		<b>4,400</b>
	Sampson	3	US 421	DUPLIN CO. LINE TO BEGIN DIVIDED HIGHWAY	1 OR 2	17.2	24	3,400
		"	"	FULL WIDTH	1 OR 2	0.16	37	
		"	"	FULL WIDTH	1 OR 2	0.31	39	
		"	"	TAPER 24' - 37'	1 OR 2	0.14	30.5	
		"	"	TAPER 24' - 39'	1 OR 2	0.13	31.5	
<b>TOTAL FOR MAP NO. 3</b>						<b>17.2</b>		<b>3,400</b>
<b>TOTAL FOR PROJ NO. 3CR.10821.44</b>						<b>22.1</b>		<b>7,800</b>
3CR.10311.44	Duplin	2	US 421	SAMPSON CO LINE TO SAMPSON CO LINE	1 OR 2	0.23	24	10
<b>TOTAL FOR PROJ NO. 3CR.10311.44</b>						<b>0.23</b>		<b>10</b>
<b>GRAND TOTAL</b>						<b>22.33</b>		<b>7,810</b>

PROJECT NO.	SHEET NO.	TOTAL NO.
3CR.10311.44	4	
3CR.10821.44		

<b>SUMMARY OF QUANTITIES-ALTERNATE ONE</b>										
PROJECT NO	COUNTY	MAP NO	ROUTE	DESCRIPTION	TYP NO	LENGTH MI	WIDTH FT	2 1/2" MILLING SY	INTERMEDIATE COURSE, 119.0B TONS	PG 64-22 PLANT MIX TONS
3CR.10821.44	Sampson	1	US 421	PENDER CO. LINE TO DUPLIN COUNTY LINE	1 OR 2	4.9	24	54,067	7,771	365
		"	"	FULL WIDTH	1 OR 2	0.32	38	7,134	1,022	48
		"	"	TAPER 24' - 37'	1 OR 2	0.13	30.5	2,326	334	16
		"	"	TAPER 24' - 38'	1 OR 2	0.26	31	4,729	678	32
		"	"	TAPER 24' - 39'	1 OR 2	0.07	31.5	1,294	186	9
		"	"	TAPER 37' - 38'	1 OR 2	0.12	37.5	2,640	378	18
		"	"	TAPER 37' - 39'	1 OR 2	0.16	38	3,567	511	24
<b>TOTAL FOR MAP NO. 1</b>						<b>4.9</b>		<b>75,757</b>	<b>10,880</b>	<b>512</b>
	Sampson	3	US 421	DUPLIN CO. LINE TO BEGIN DIVIDED HIGHWAY	1 OR 2	17.2	24	231,757	33,312	1,566
		"	"	FULL WIDTH	1 OR 2	0.16	37	3,473	498	23
		"	"	FULL WIDTH	1 OR 2	0.31	39	7,093	1,016	48
		"	"	TAPER 24' - 37'	1 OR 2	0.14	30.5	2,505	359	17
		"	"	TAPER 24' - 39'	1 OR 2	0.13	31.5	2,402	345	16
<b>TOTAL FOR MAP NO. 3</b>						<b>17.2</b>		<b>247,230</b>	<b>35,530</b>	<b>1,670</b>
<b>TOTAL FOR PROJ NO. 3CR.10821.44</b>						<b>22.1</b>		<b>322,987</b>	<b>46,410</b>	<b>2,182</b>
3CR.10311.44	Duplin	2	US 421	SAMPSON CO LINE TO SAMPSON CO LINE	1 OR 2	0.23	24	3,238	465	22
<b>TOTAL FOR PROJ NO. 3CR.10311.44</b>						<b>0.23</b>		<b>3,238</b>	<b>465</b>	<b>22</b>
<b>GRAND TOTAL</b>						<b>22.33</b>		<b>326,225</b>	<b>46,875</b>	<b>2,204</b>

PROJECT NO.	SHEET NO.	TOTAL NO.
3CR.10311.44	5	
3CR.10821.44		

## SUMMARY OF QUANTITIES - ALTERNATE TWO

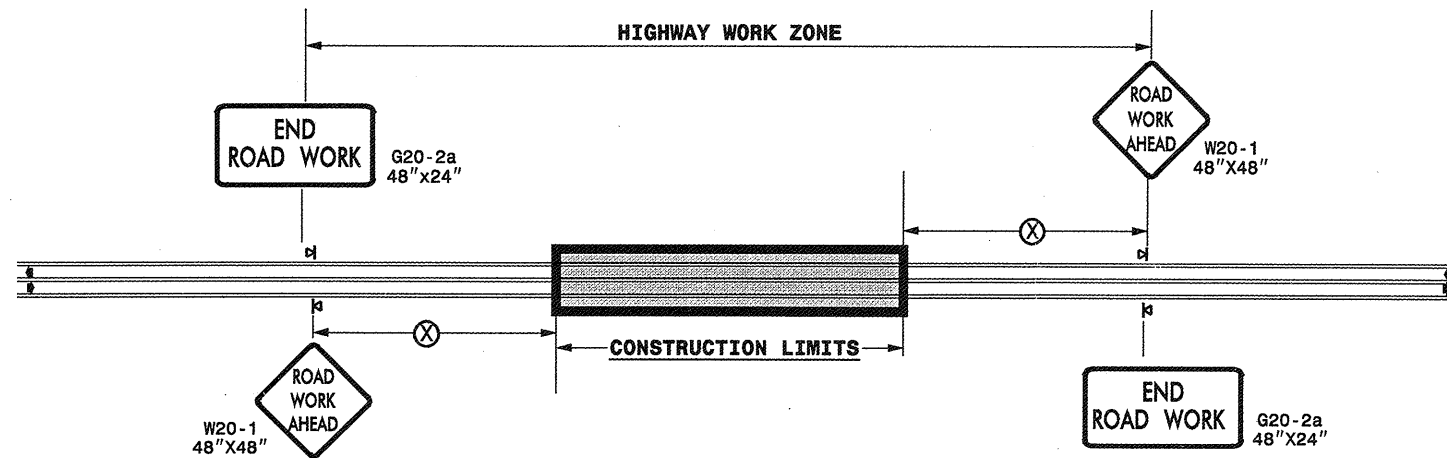
PROJECT NO	COUNTY	MAP NO	ROUTE	DESCRIPTION	TYP NO	LENGTH MI	WIDTH FT	HOT-IN-PLACE RECYCLED ASPHALT CONCRETE, TYPE I19.0B SY	EMULSIFIED ASPHALT REJUVENATING AGENT GAL	HOT MIX ASPHALT ADMIXTURE TON	PG 64-22 PLANT MIX HIPR TON
3CR.10821.44	Sampson	1	US 421	PENDER CO. LINE TO DUPLIN COUNTY LINE	1 OR 2	4.9	24	54,067	5,454	1,363	82
		"	"	FULL WIDTH	1 OR 2	0.32	38	7,134	717	179	11
		"	"	TAPER 24' - 37'	1 OR 2	0.13	30.5	2,326	234	59	4
		"	"	TAPER 24' - 38'	1 OR 2	0.26	31	4,729	476	119	7
		"	"	TAPER 24' - 39'	1 OR 2	0.07	31.5	1,294	130	33	2
		"	"	TAPER 37' - 38'	1 OR 2	0.12	37.5	2,640	265	66	4
		"	"	TAPER 37' - 39'	1 OR 2	0.16	38	3,567	359	90	5
<b>TOTAL FOR MAP NO. 1</b>						<b>4.9</b>		<b>75,757</b>	<b>7,635</b>	<b>1,909</b>	<b>115</b>
	Sampson	3	US 421	DUPLIN CO. LINE TO BEGIN DIVIDED HIGHWAY	1 OR 2	17.2	24	231,757	23,377	5,844	351
		"	"	FULL WIDTH	1 OR 2	0.16	37	3,473	349	87	5
		"	"	FULL WIDTH	1 OR 2	0.31	39	7,093	713	178	11
		"	"	TAPER 24' - 37'	1 OR 2	0.14	30.5	2,505	252	63	4
		"	"	TAPER 24' - 39'	1 OR 2	0.13	31.5	2,402	242	60	4
<b>TOTAL FOR MAP NO. 3</b>						<b>17.2</b>		<b>247,230</b>	<b>24,933</b>	<b>6,232</b>	<b>375</b>
<b>TOTAL FOR PROJ NO. 3CR.10821.44</b>						<b>22.1</b>		<b>322,987</b>	<b>32,568</b>	<b>8,141</b>	<b>490</b>
3CR.10311.44	Duplin	2	US 421	SAMPSON CO LINE TO SAMPSON CO LINE	1 OR 2	0.23	24	3,238	327	82	5
<b>TOTAL FOR PROJ NO. 3CR.10311.44</b>						<b>0.23</b>		<b>3,238</b>	<b>327</b>	<b>82</b>	<b>5</b>
<b>GRAND TOTAL</b>						<b>22.33</b>		<b>326,225</b>	<b>32,895</b>	<b>8,223</b>	<b>495</b>

PROJECT NO.	SHEET NO.	TOTAL NO.
3CR.10821.44	6	
3CR.10311.44		

## THERMOPLASTIC AND PAINT QUANTITIES

PROJECT NO	COUNTY	MAP NO	ROUTE	DESCRIPTION	4810000000-E		4820000000-E		4835000000-E	4840000000-N	4845000000-N				4900000000-N	
					4" WHITE PAINT LF	4" YELLOW PAINT LF	8" WHITE PAINT LF	8" YELLOW PAINT LF	24" WHITE PAINT LF	PAINT MSG SCHOOL EA	PAINT LT ARROW EA	PAINT STR ARROW EA	PAINT RT ARROW EA	PAINT STR & RT ARROW EA	YELLOW & YELLOW MARKERS EA	CYAN & RED MARKERS EA
3CR.10821.44	Sampson	1	US 421	PENDER CO. LINE TO BEGIN DIVIDED HIGHWAY	103,911	114,471		600	100		17	10		15	453	10
	"	3	"	PENDER CO. LINE TO BEGIN DIVIDED HIGHWAY	370,144	346,501	1,350	600	100	12	17	10	3	15	1,183	20
<b>TOTAL FOR PROJ NO. 3CR.10821.44</b>					<b>474,055</b>	<b>460,972</b>	<b>1,350</b>	<b>1,200</b>	<b>200</b>	<b>12</b>	<b>34</b>	<b>20</b>	<b>3</b>	<b>30</b>	<b>1,636</b>	<b>30</b>
					<b>935,027</b>		<b>2,550</b>				<b>87</b>				<b>1,666</b>	
3CR.10311.44	Duplin	2	US 421	SAMPSON CO LINE TO SAMPSON CO LINE	4,950	7,424									15	
<b>TOTAL FOR PROJ NO. 3CR.10311.44</b>					<b>4,950</b>	<b>7,424</b>									<b>15</b>	
					<b>12,374</b>											
<b>GRAND TOTAL</b>					<b>479,005</b>	<b>468,396</b>	<b>1,350</b>	<b>1,200</b>	<b>200</b>	<b>12</b>	<b>34</b>	<b>20</b>	<b>3</b>	<b>30</b>	<b>1,651</b>	<b>30</b>
					<b>947,401</b>		<b>2,550</b>				<b>87</b>				<b>1,681</b>	

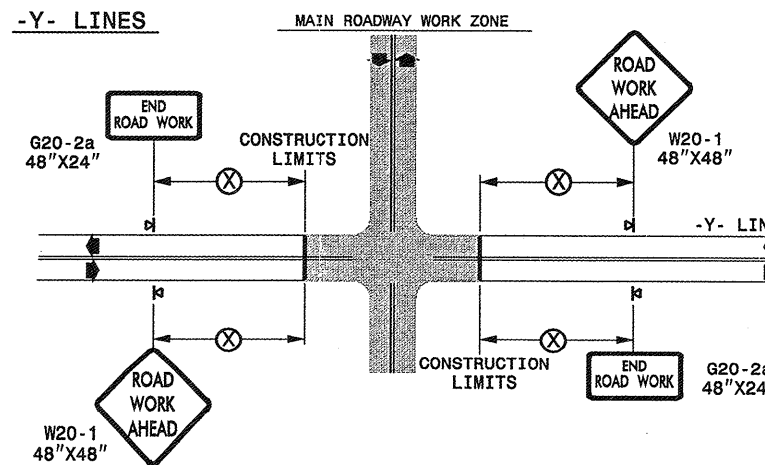
**TWO-WAY UNDIVIDED \*\* (L-LINES)**



POSTED SPEED LIMIT (M.P.H.)	RECOMMENDED MINIMUM SIGN SPACING
≤ 50	500'
≥ 55	1000'

STATE OF NORTH CAROLINA  
DEPT. OF TRANSPORTATION  
DIVISION OF HIGHWAYS  
RALEIGH, N.C.

**ROADWAYS INTERSECTING ALONG 2 WAY UNDIVIDED WORK ZONE (Y-LINES)**



DETAIL DRAWING  
FOR TWO-WAY UNDIVIDED  
WORK ZONE WARNING SIGNS

**GENERAL NOTES**

- USE FLUORESCENT ORANGE SHEETING (TYPE VII OR HIGHER) ON ALL ADVANCED WORK ZONE SIGNS.
- DO NOT INSTALL ADVANCE WARNING SIGNS MORE THAN 3 DAYS PRIOR TO BEGINNING OF WORK.
- ALL SIGN SPACING DIMENSIONS ARE APPROXIMATE, FIELD ADJUST AS NECESSARY OR AS DIRECTED.
- USE PORTABLE WORK ZONE SIGNS ONLY WITH PORTABLE WORK ZONE SIGN STANDS SPECIFICALLY DESIGNED FOR ONE ANOTHER. PORTABLE WORK ZONE SIGNS MAY BE ROLL UP OR APPROVED COMPOSITE.
- PROVIDE PORTABLE WORK ZONE SIGN STANDS, PORTABLE SIGNS AND SIGN SHEETING WHICH ARE LISTED ON THE NORTH CAROLINA DEPARTMENT OF TRANSPORTATION'S APPROVED PRODUCT LIST OR ACCEPTED AS TRAFFIC QUALIFIED BY THE TRAFFIC CONTROL UNIT.
- \*\* TWO-WAY UNDIVIDED ADVANCE WARNING SIGN CONFIGURATION MAY BE USED ON URBAN MULTI-LANE FACILITIES WHERE CONDITIONS LIMIT THE USE OF DUAL MOUNTED SIGNS AS DETERMINED BY THE ENGINEER.

LEGEND	
◀	PORTABLE SIGN
➔	DIRECTION OF TRAFFIC FLOW

SHEET 1 OF 1

APPROVED: _____	DATE: _____	DETAIL DRAWING FOR TWO-WAY UNDIVIDED ADVANCED WORK ZONE WARNING SIGNS			
SEAL 	SCALE: NONE				
	DATE: _____			REVISIONS	
	DWG. BY: _____			7-98	10/01
	DESIGN BY: _____			10-98	03/04
REVIEWED BY: _____		01/01	11/04		

25-MAY-2007 16:31  
 \\DOT\DF-SR001\GROUPS-WZTCC\design\group4\resurfacing\resurfacing2006\div03\3cr1031144etc\_2wayundivurbfrwysjuly2006.dgn  
 AT WZTCC206427