

**TIP PROJECT: B-3876**

STATE OF NORTH CAROLINA  
DIVISION OF HIGHWAYS

---

PLAN FOR PROPOSED  
HIGHWAY EROSION CONTROL

---

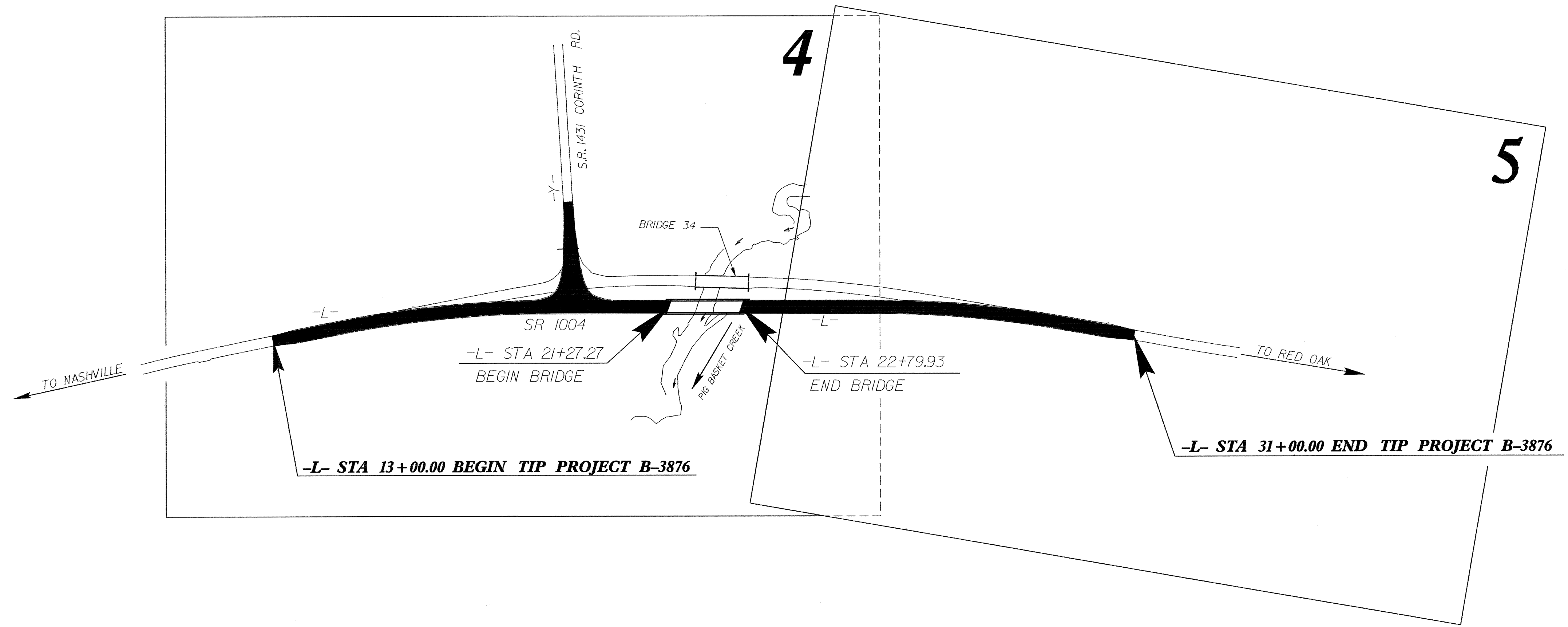
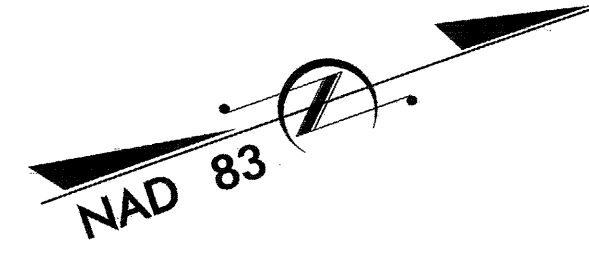
**NASH COUNTY**

STATE	STATE PROJECT REFERENCE NO.	SHEET NO.	TOTAL SHEETS
N.C.	B-3876	EC-1	
STATE PROJ. NO.	F.A. PROJ. NO.	DESCRIPTION	

**EROSION AND SEDIMENT CONTROL MEASURES**

Std. #	Description	Symbol
1630.03	Streambank Reformation	
1630.05	Temporary Silt Ditch	
1605.01	Temporary Diversion	
1606.01	Temporary Silt Fence	
1622.01	Special Sediment Control Fence	
1622.01	Temporary Berms and Slope Drains	
1630.01	Riser Basin	
1630.02	Silt Basin Type B	
1635.01	Temporary Rock Silt Check Type-A	
1635.01	Temporary Rock Silt Check Type-B	
1634.01	Temporary Rock Sediment Dam Type-A	
1634.02	Temporary Rock Sediment Dam Type-B	
1635.01	Rock Pipe Inlet Sediment Trap Type-A	
1635.02	Rock Pipe Inlet Sediment Trap Type-B	
1630.04	Stilling Basin	
Rock Inlet Sediment Trap:		
1632.01	Type A	
1632.02	Type B	
1632.03	Type C	
	Skimmer Basin	
	Tiered Skimmer Basin	

**LOCATION: BRIDGE 34 ON SR 1004 OVER PIG BASKET CREEK**  
**TYPE OF WORK: GRADING, DRAINAGE, PAVING AND STRUCTURE**



**THIS PROJECT CONTAINS  
EROSION CONTROL PLANS  
FOR CLEARING AND  
GRUBBING PHASE OF  
CONSTRUCTION.**

**THIS PROJECT HAS  
BEEN DESIGNED TO  
SENSITIVE WATERSHED  
STANDARDS.**

**ENVIRONMENTALLY  
SENSITIVE AREA(S) EXIST  
ON THIS PROJECT**  
*Refer To E. C. Special Provisions  
for Special Considerations.*

**GRAPHIC SCALE**

0

PLANS

0

PROFILE (HORIZONTAL)

0

PROFILE (VERTICAL)

ROADSIDE ENVIRONMENTAL UNIT  
DIVISION OF HIGHWAYS  
STATE OF NORTH CAROLINA

Prepared in the Office of:  
**ROADSIDE ENVIRONMENTAL UNIT**  
1 South Wilmington St.  
Raleigh, NC 27611

**2006 STANDARD SPECIFICATIONS**

Roadway Standard Drawings

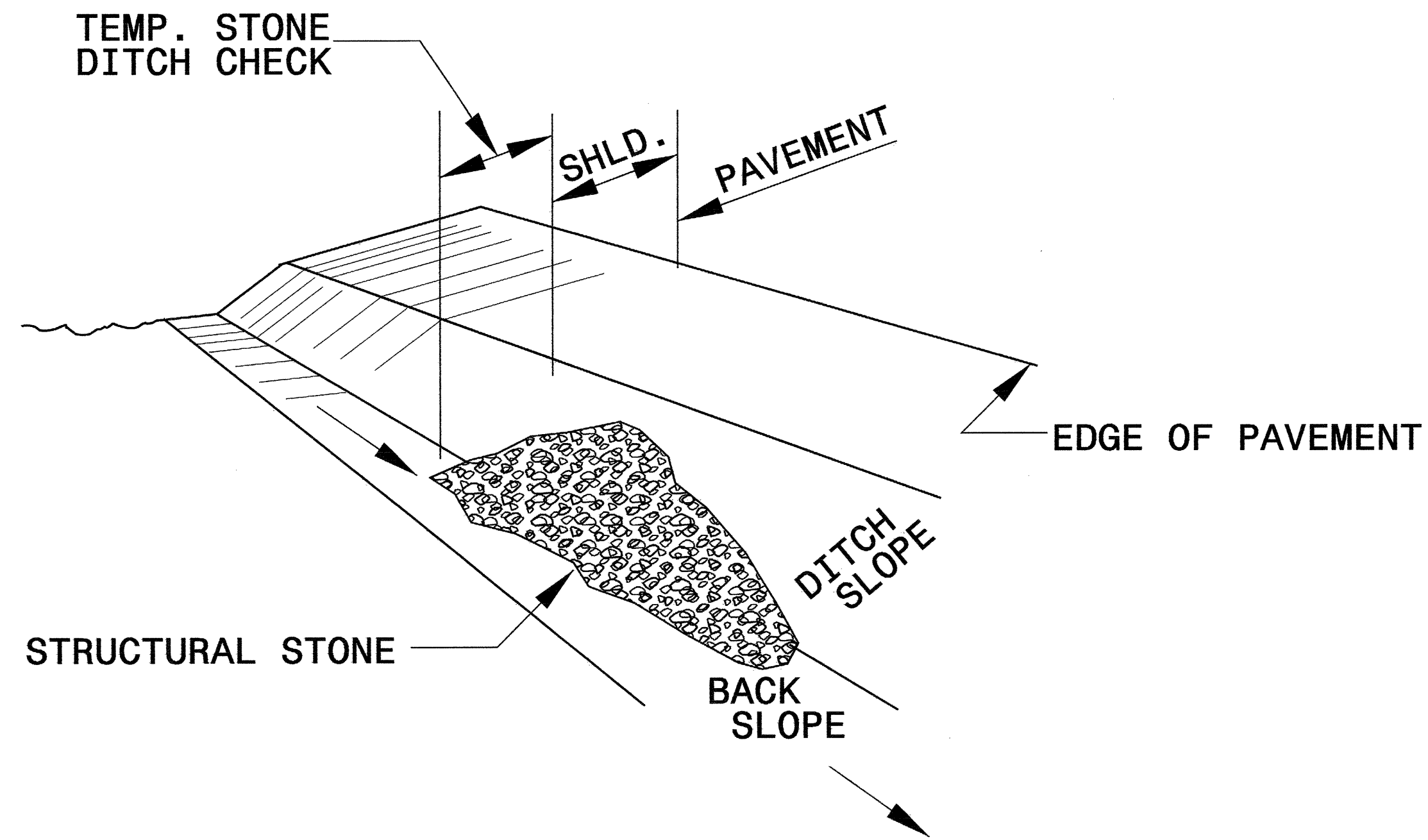
The following roadway english standards as appear in "Roadway Standard Drawings"- Roadway Design Unit - N. C. Department of Transportation - Raleigh, N. C., dated July 18, 2006 and the latest revision thereto are applicable to this project and by reference hereby are considered a part of these plans.

1605.01 Temporary Silt Fence	1632.03 Rock Inlet Sediment Trap Type C
1607.01 Gravel Construction Entrance	1633.01 Temporary Rock Silt Check Type A
1622.01 Temporary Berms and Slope Drains	1634.02 Temporary Rock Sediment Dam Type B
1630.03 Temporary Silt Ditch	

I:\Projects\15\3876\Roadside Environmental\design\3876\_rdu\_tah.dgn  
11/15/2007 15:03  
153876\Roadside Environmental\design\3876\_rdu\_tah.dgn  
11/15/2007 15:03

PROJECT REFERENCE NO. B-3876	SHEET NO. EC-2
RW SHEET NO.	
ROADWAY DESIGN ENGINEER	HYDRAULICS ENGINEER

# TEMPORARY ROCK SILT CHECK TYPE 'B' DETAIL

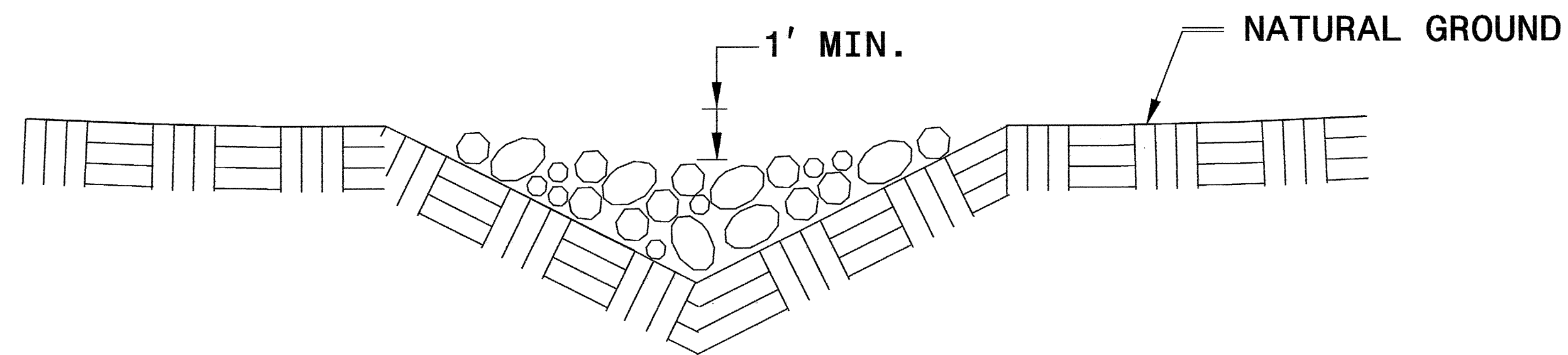


**ISOMETRIC VIEW**

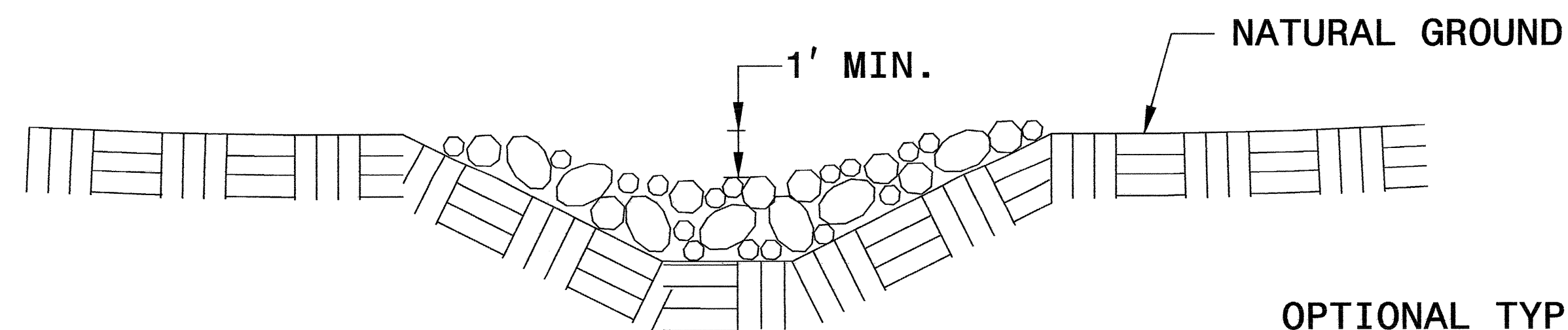
**NOTES:**

USE CLASS 'B' EROSION CONTROL STONE FOR STRUCTURAL STONE.

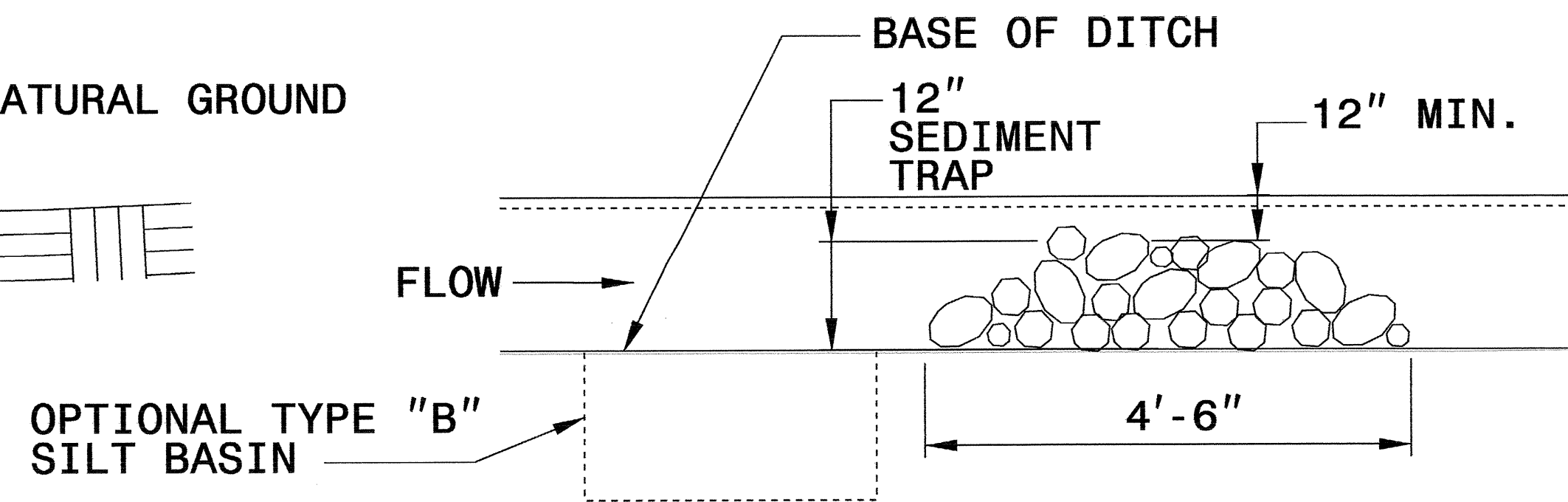
THE ENGINEER MAY DIRECT THE OPTION OF CLASS "A" STONE FOR SITES HAVING LESS THAN ONE (1) ACRE DRAINAGE AREA AND A DITCH GRADE LESS THAN 3%.



**CROSS SECTION  
VEE DITCH**



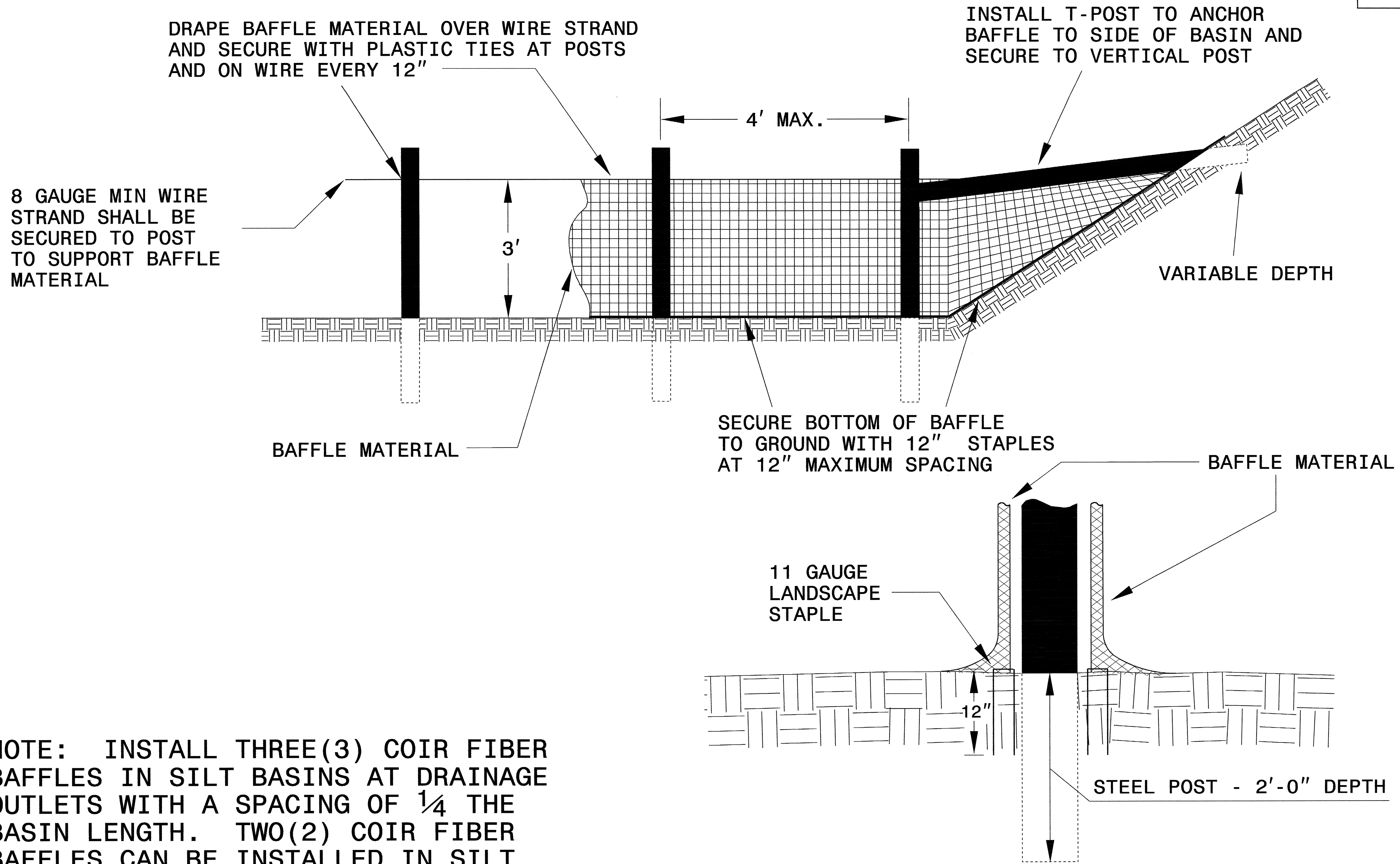
**CROSS SECTION  
TRAPEZOIDAL DITCH**



**ELEVATION VIEW**

PROJECT REFERENCE NO. B-3876	SHEET NO. EC-2A
RW SHEET NO.	
ROADWAY DESIGN ENGINEER	HYDRAULICS ENGINEER

# COIR FIBER BAFFLE DETAIL

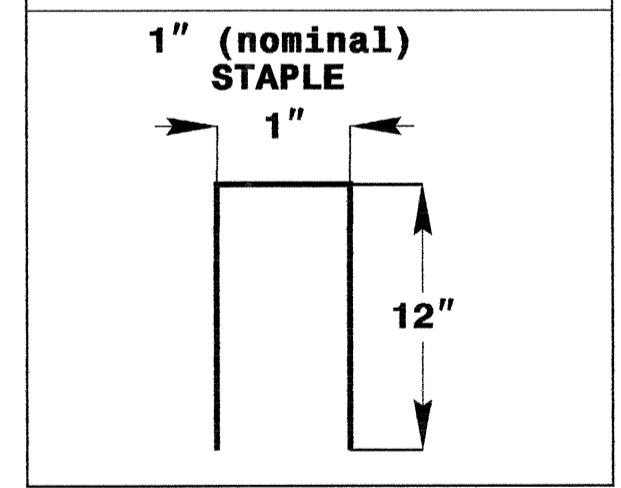
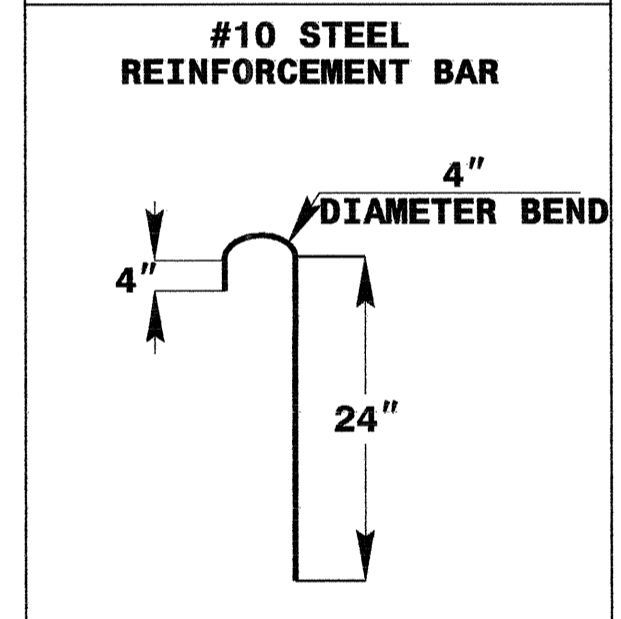
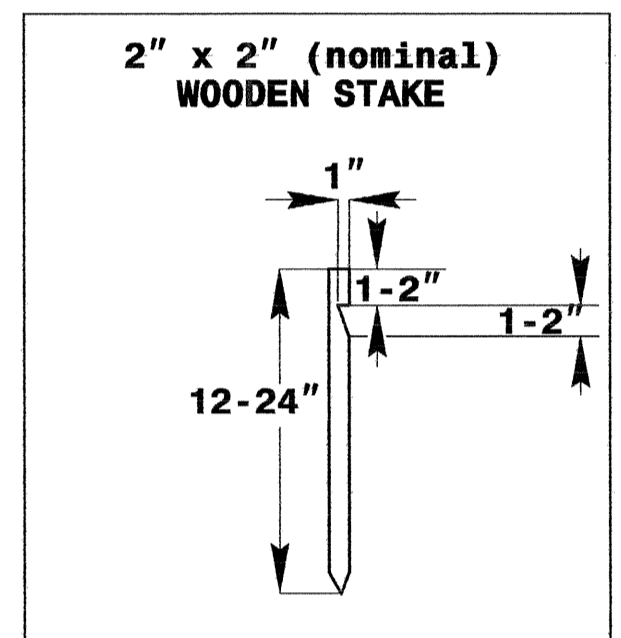
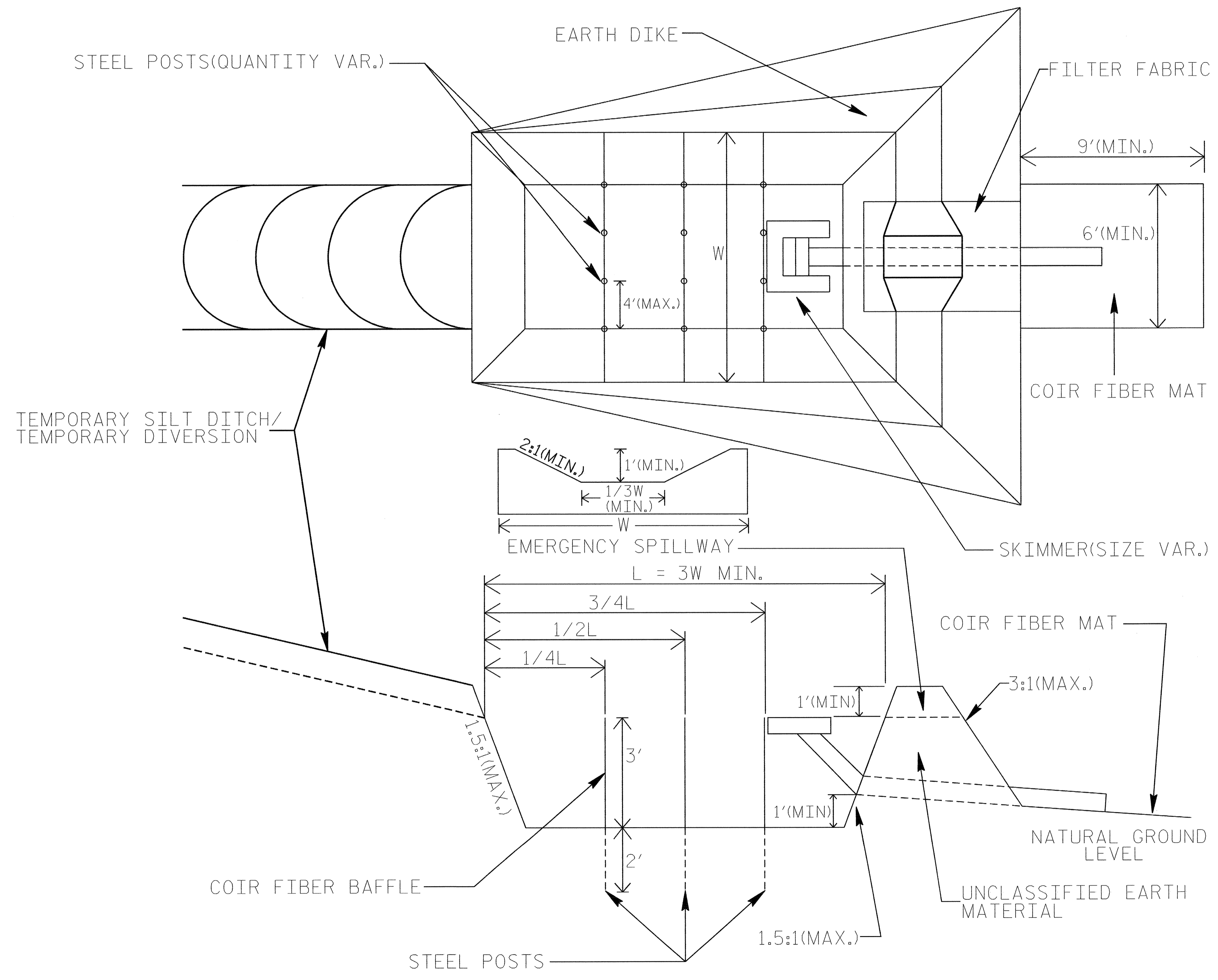


NOTE: INSTALL THREE(3) COIR FIBER BAFFLES IN SILT BASINS AT DRAINAGE OUTLETS WITH A SPACING OF  $\frac{1}{4}$  THE BASIN LENGTH. TWO(2) COIR FIBER BAFFLES CAN BE INSTALLED IN SILT BASINS LESS THAN 20 FT. IN LENGTH WITH A SPACING OF  $\frac{1}{3}$  THE BASIN LENGTH.

BAFFLE MATERIAL SHALL BE SECURED TO THE BOTTOM AND SIDES OF BASIN USING 12" LANDSCAPE STAPLES

# SKIMMER BASIN WITH BAFFLES DETAIL

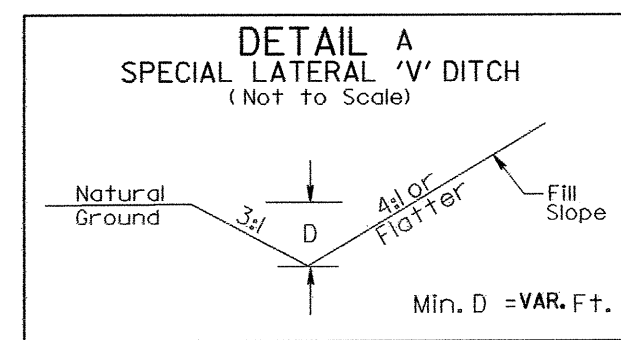
PROJECT REFERENCE NO. B-3876	SHEET NO. EC-2B
RW SHEET NO.	
ROADWAY DESIGN ENGINEER	HYDRAULICS ENGINEER



**COIR FIBER MAT ANCHOR OPTIONS**



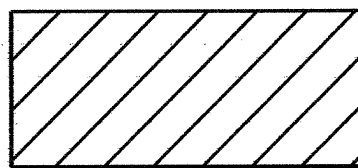
PROJECT REFERENCE NO.	SHEET NO.
B-3876	EC-4/CONST.4
RW SHEET NO.	
ROADWAY DESIGN ENGINEER	HYDRAULICS ENGINEER



STA 14+00-L- TO STA 17+50-L- (RIGHT)

CLEARING AND GRUBBING  
EROSION CONTROL FOR  
CONSTRUCTION SHEET 4

NOTE:  
PLACE TEMPORARY ROCK SEDIMENT DAMS TYPE - B  
AND TEMPORARY ROCK SILT CHECKS TYPE - A AT  
DRAINAGE OUTLETS.

 ENVIRONMENTALLY SENSITIVE AREA  
SEE PROJECT SPECIAL PROVISIONS

NOTE:  
UTILIZE TEMPORARY ROCK SILT CHECK TYPE - A  
AS STILLING BASIN WHERE APPLICABLE.

-L-  
PI Sta 11+08.97  
Δ = 3' 17" 31.1" (RT)  
D = 2' 08" 48.6"  
L = 153.34'  
T = 76.69'  
R = 2668.83'  
e = EXISTING

-L- POT 13+19.62  
(25.37' LT.)

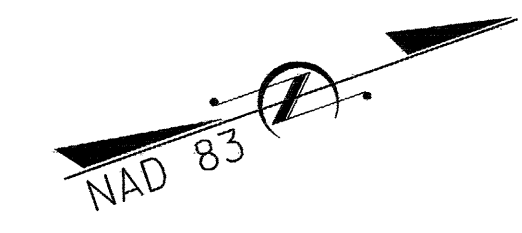
35 x 10 x 3  
4' weir  
ID 4.3

NOTE: USE 5.0' O/S FOR 3-CENTERED  
CURVE (120'-40'-120')

GUY W. & BEVERLY VICK  
D.B. 877 PG. 305  
P.B. 9 PG. 57

25 x 13 x 3  
4' weir  
ID 4.4

THREE MR LTD PARTNERSHIP, ETAL  
D.B. 1834 PG. 825  
P.B. 18 PG. 298



RICHARD L. & KATHERYN TYSON  
NO DEED REFERENCE  
P.B. 25 PG. 103

-L- POT 18+90.46 (71.44' LT)

GRADE TO DRAIN FROM  
STA 16+50-L- TO 18+50-L- (LEFT)

-Y- STA 14+50.00  
BEGIN CONSTRUCTION

NOTE: REMOVE EXISTING 42" CMP AND REPLACE WITH  
A 60 INCH RCP. BURY THE 60 INCH RCP A FOOT.

THREE MR LTD PARTNERSHIP, ETAL  
D.B. 1834 PG. 825  
P.B. 18 PG. 298

-L- POT 23+05.99 (65.95' LT.)

46 x 13 x 3  
4' weir  
ID 4.10b

MORRIS BATTLE  
HEIRS  
NO DEED REFERENCE

MATCHLINE SEE SHEET 5 -L- STA. 25 + 00.00

13-MAR-2007 10:22  
91:\t\p\proj\ec-4-const-4-b-3876\environmental\design\b3876\_rdy\_psh04.dgn  
chen AT RENY21415

ETHEL J. DANIELS  
D.B. 1239 PG. 711  
P.B. 16 PG. 503

ETHEL J. DANIELS  
D.B. 751 PG. 460

WILLIAM MICHAEL BRASWELL  
D.B. 1258 PG. 374

90 x 15 x 3  
2.0 inch Skimmer  
with 2.0 inch  
Orifice Diameter  
6 ft. weir  
ID 4.1

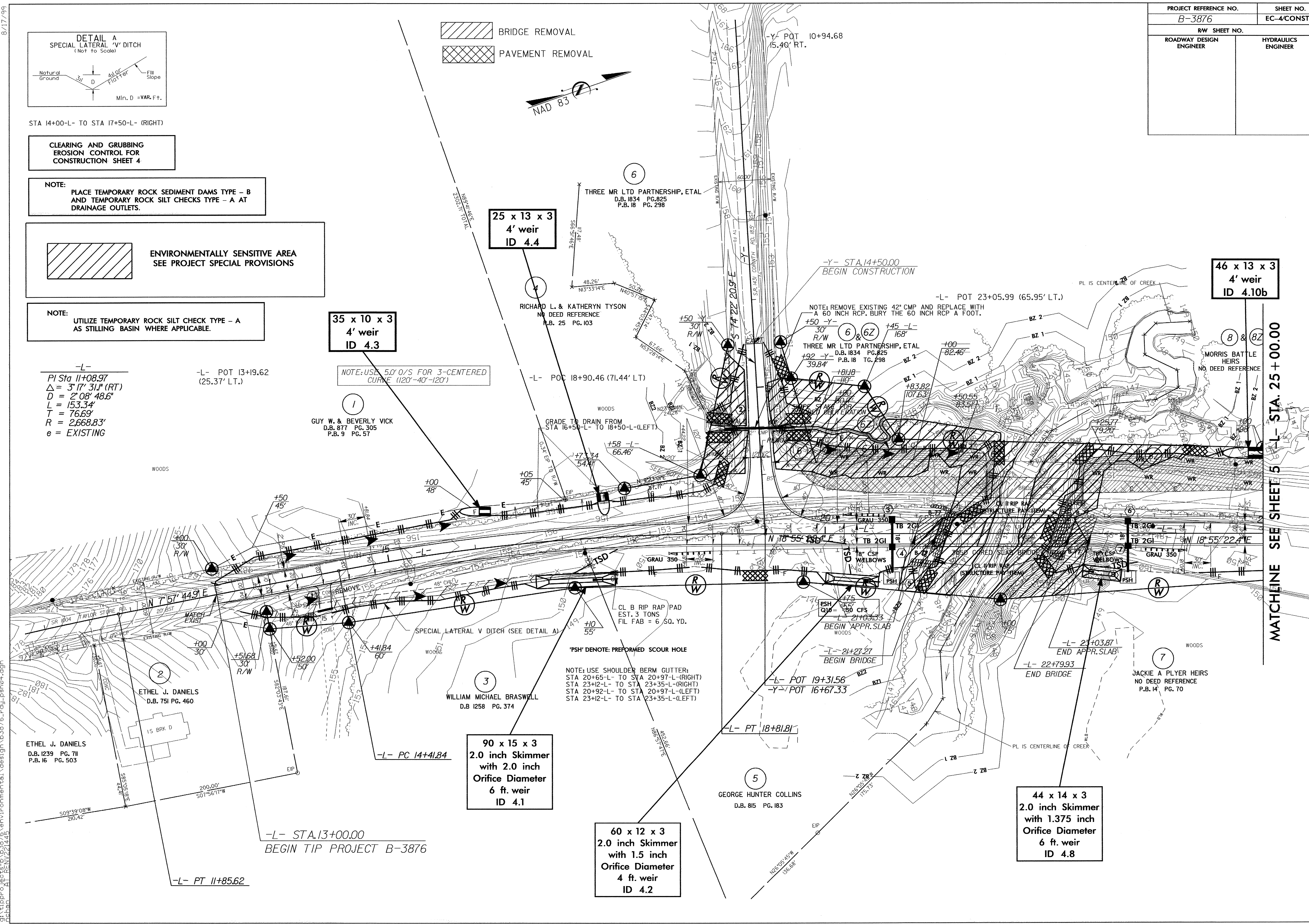
NOTE: USE SHOULDER BERM GUTTER:  
STA 20+65-L- TO STA 20+97-L- (RIGHT)  
STA 23+12-L- TO STA 23+35-L- (RIGHT)  
STA 20+92-L- TO STA 20+97-L- (LEFT)  
STA 23+12-L- TO STA 23+35-L- (LEFT)

GEORGE HUNTER COLLINS  
D.B. 815 PG. 183

60 x 12 x 3  
2.0 inch Skimmer  
with 1.5 inch  
Orifice Diameter  
4 ft. weir  
ID 4.2

44 x 14 x 3  
2.0 inch Skimmer  
with 1.375 inch  
Orifice Diameter  
6 ft. weir  
ID 4.8

JACKIE A PLYER  
HEIRS  
NO DEED REFERENCE  
P.B. 14 PG. 70



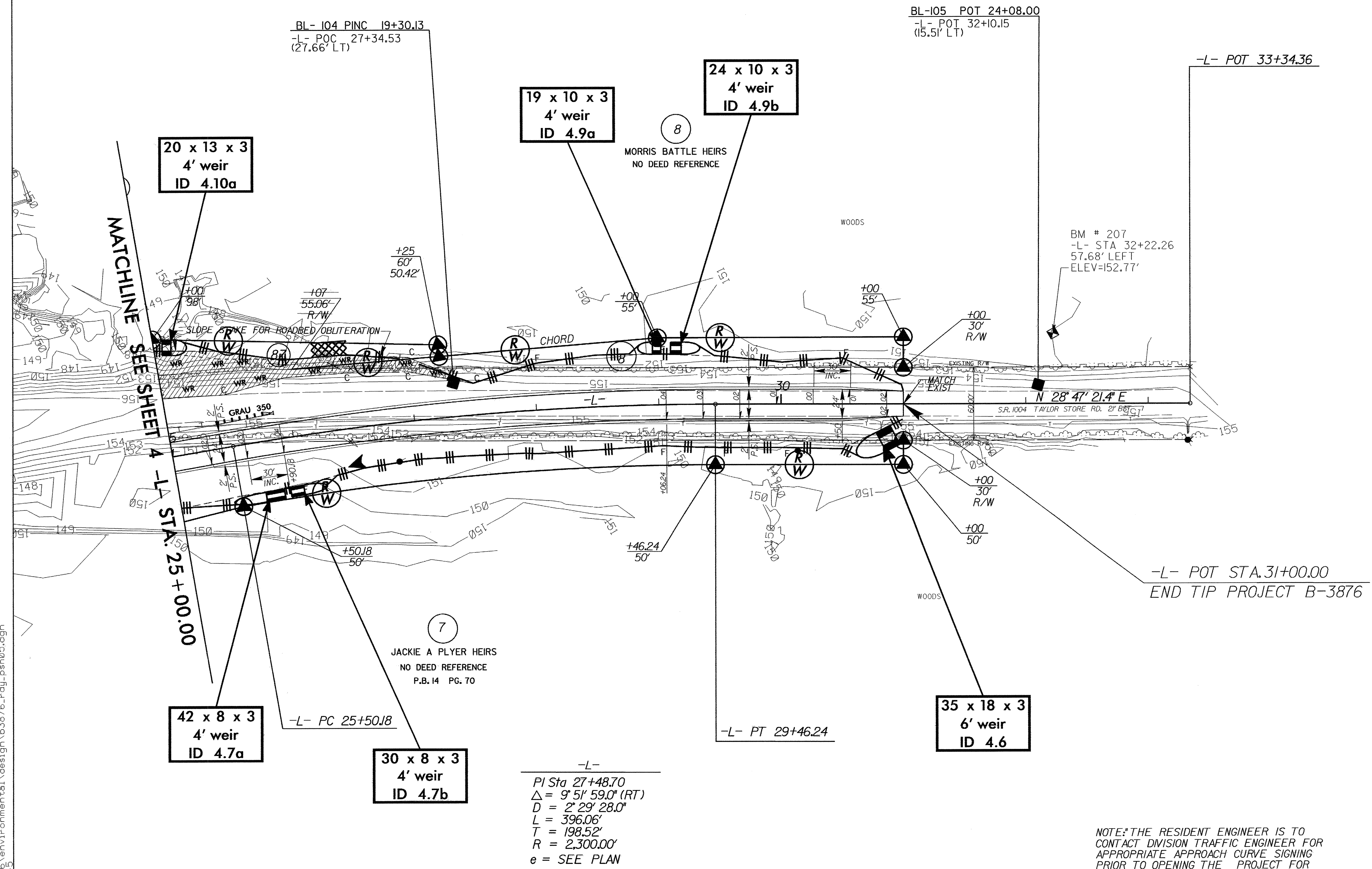
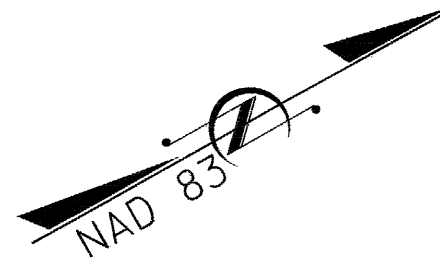
8/17/99

CLEARING AND GRUBBING  
EROSION CONTROL FOR  
CONSTRUCTION SHEET 5

NOTE:  
PLACE TEMPORARY ROCK SEDIMENT DAMS TYPE - B  
AND TEMPORARY ROCK SILT CHECKS TYPE - A AT  
DRAINAGE OUTLETS.

NOTE:  
UTILIZE TEMPORARY ROCK SILT CHECK TYPE - A  
AS STILLING BASIN WHERE APPLICABLE.

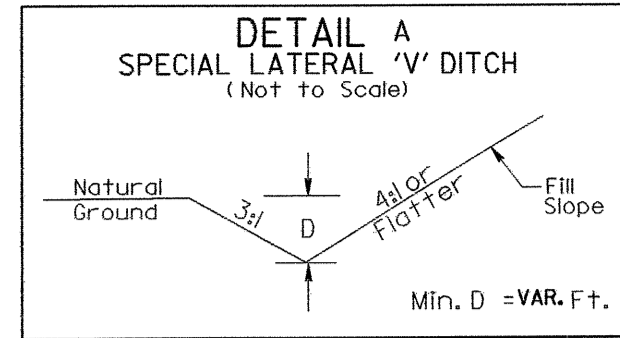
PROJECT REFERENCE NO. B-3876	SHEET NO. EC-5/CONST.5
RW SHEET NO.	
ROADWAY DESIGN ENGINEER	HYDRAULICS ENGINEER



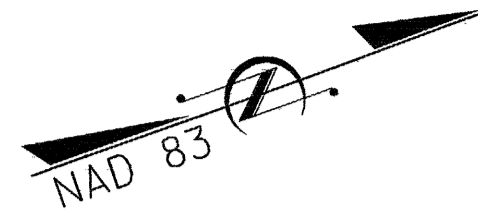
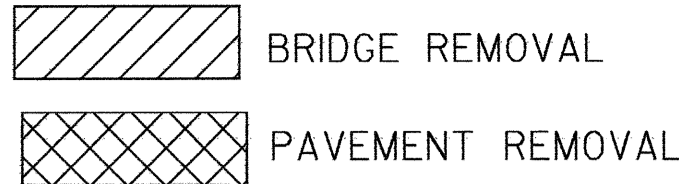
13-MAR-2007 10:23  
g:\tpp\o\ec\ec-b\3876\environmental\design\3876\_rdy\_psh05.dgn  
schan AT RENY221445

8/17/99

PROJECT REFERENCE NO.	SHEET NO.
B-3876	EC-6/CONST.4
RW SHEET NO.	
ROADWAY DESIGN ENGINEER	HYDRAULICS ENGINEER

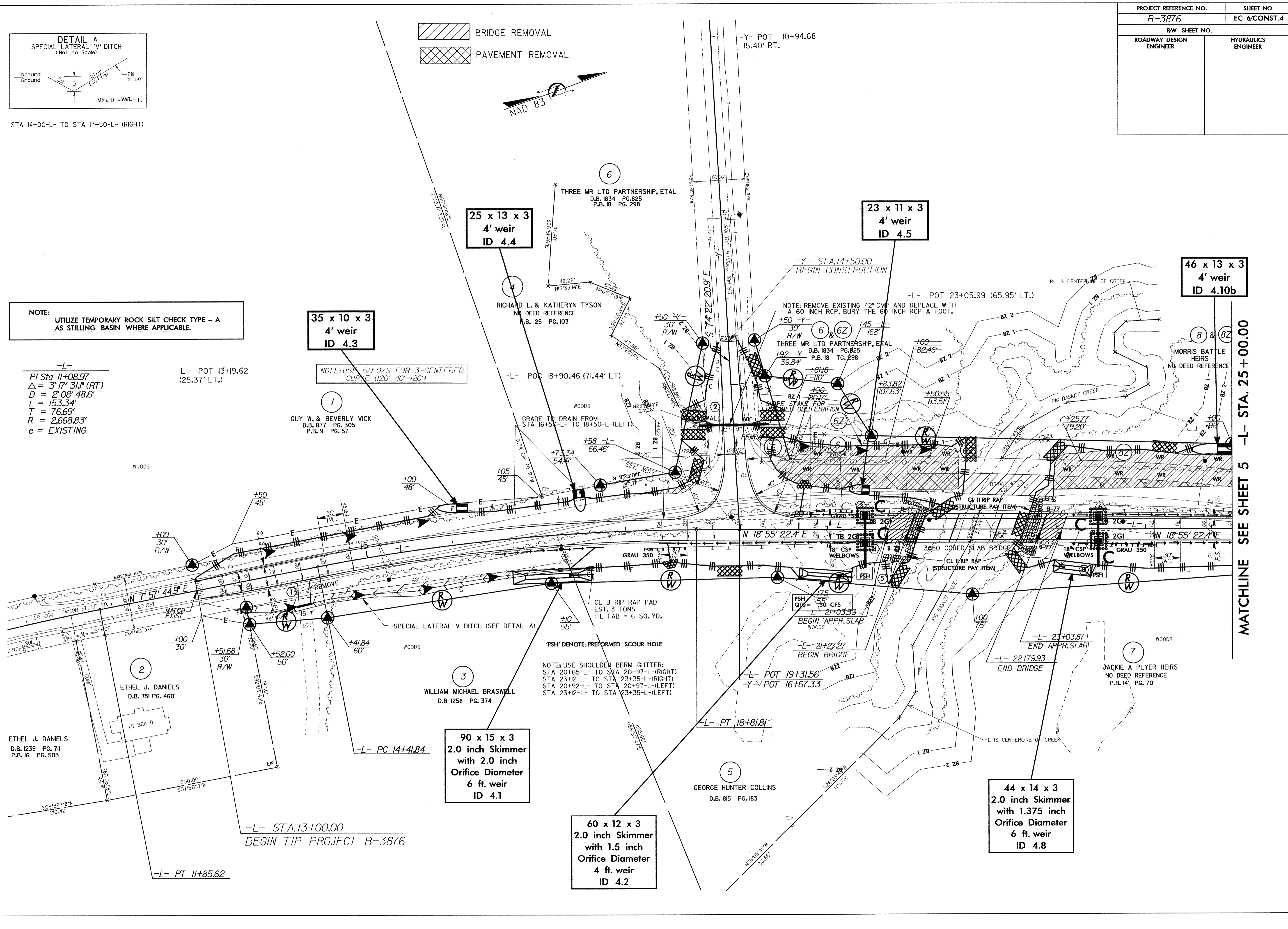


STA 14+00-L TO STA 17+50-L (RIGHT)



**NOTE:**  
UTILIZE TEMPORARY ROCK SILT CHECK TYPE - A AS STILLING BASIN WHERE APPLICABLE.

-L-  
PI Sta 11+08.97  
 $\Delta = 3' 17' 31''$  (RT)  
 $D = 2' 08' 48.6''$   
 $L = 153.34'$   
 $T = 76.69'$   
 $R = 2,668.83'$   
 $e = \text{EXISTING}$



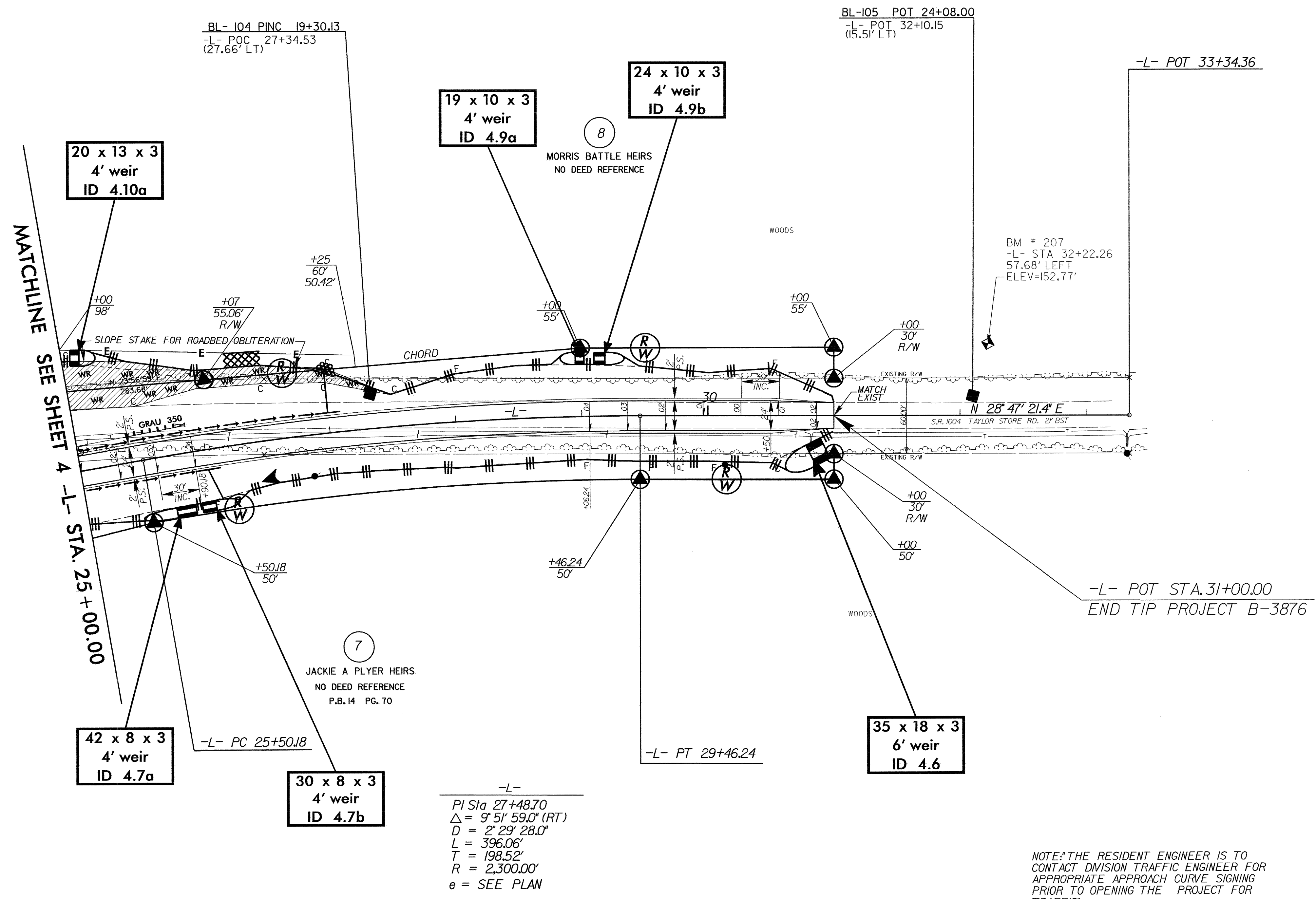
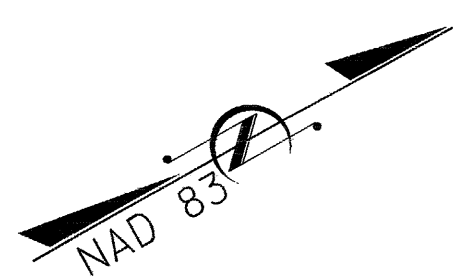
MATCHLINE SEE SHEET 5 -L- STA. 25+00.00

I3-MAR-2007 10:21  
 st:\tippr\j\ec\psh04.dgn  
 Design: B3876\_rdy.psh04.dgn  
 PLOT: B3876.rdy.psh04.dgn



PROJECT REFERENCE NO.	SHEET NO.
B-3876	EC-7/CONST.5
RW SHEET NO.	
ROADWAY DESIGN ENGINEER	HYDRAULICS ENGINEER

NOTE: UTILIZE TEMPORARY ROCK SILT CHECK TYPE - A AS STILLING BASIN WHERE APPLICABLE.

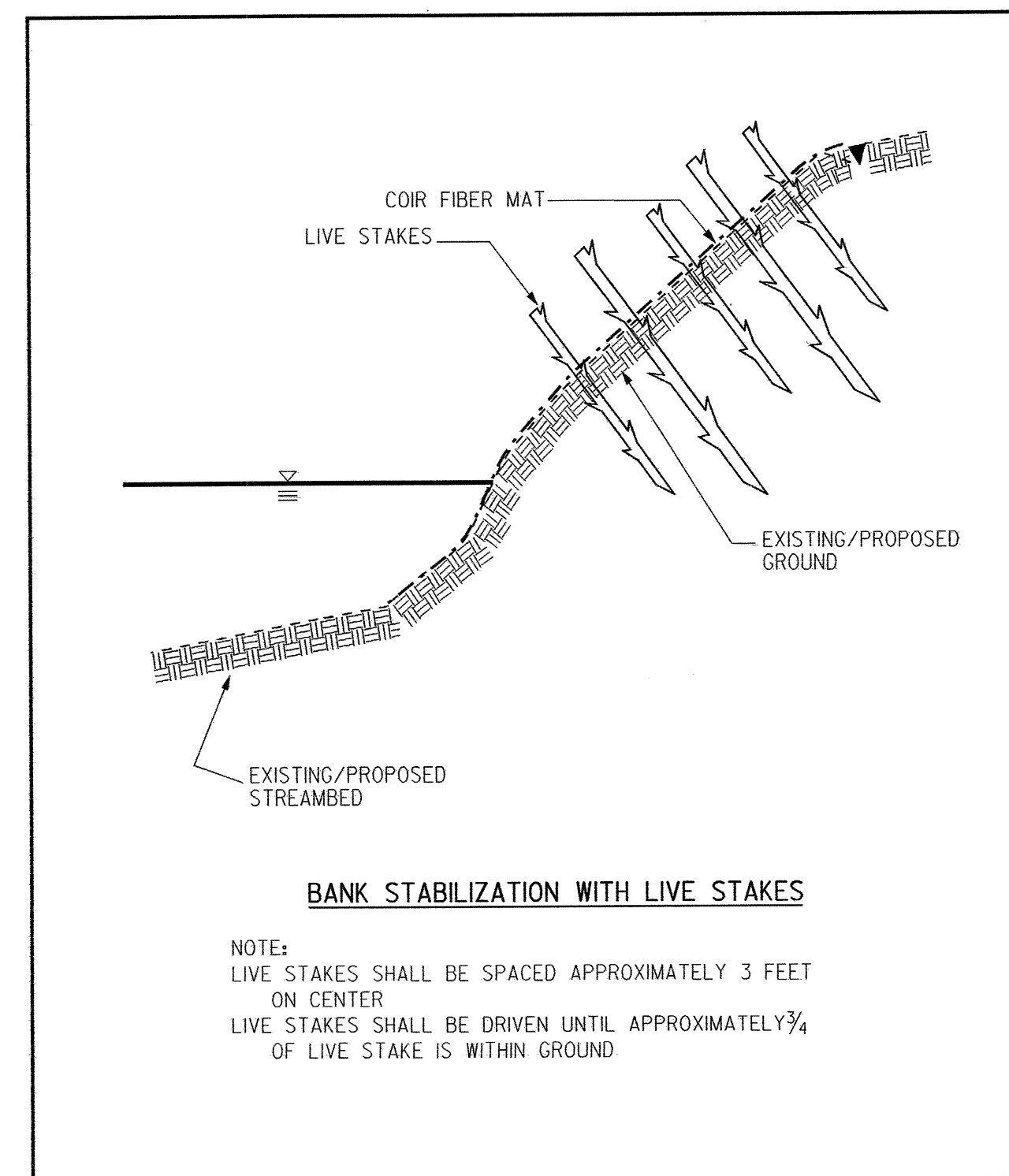
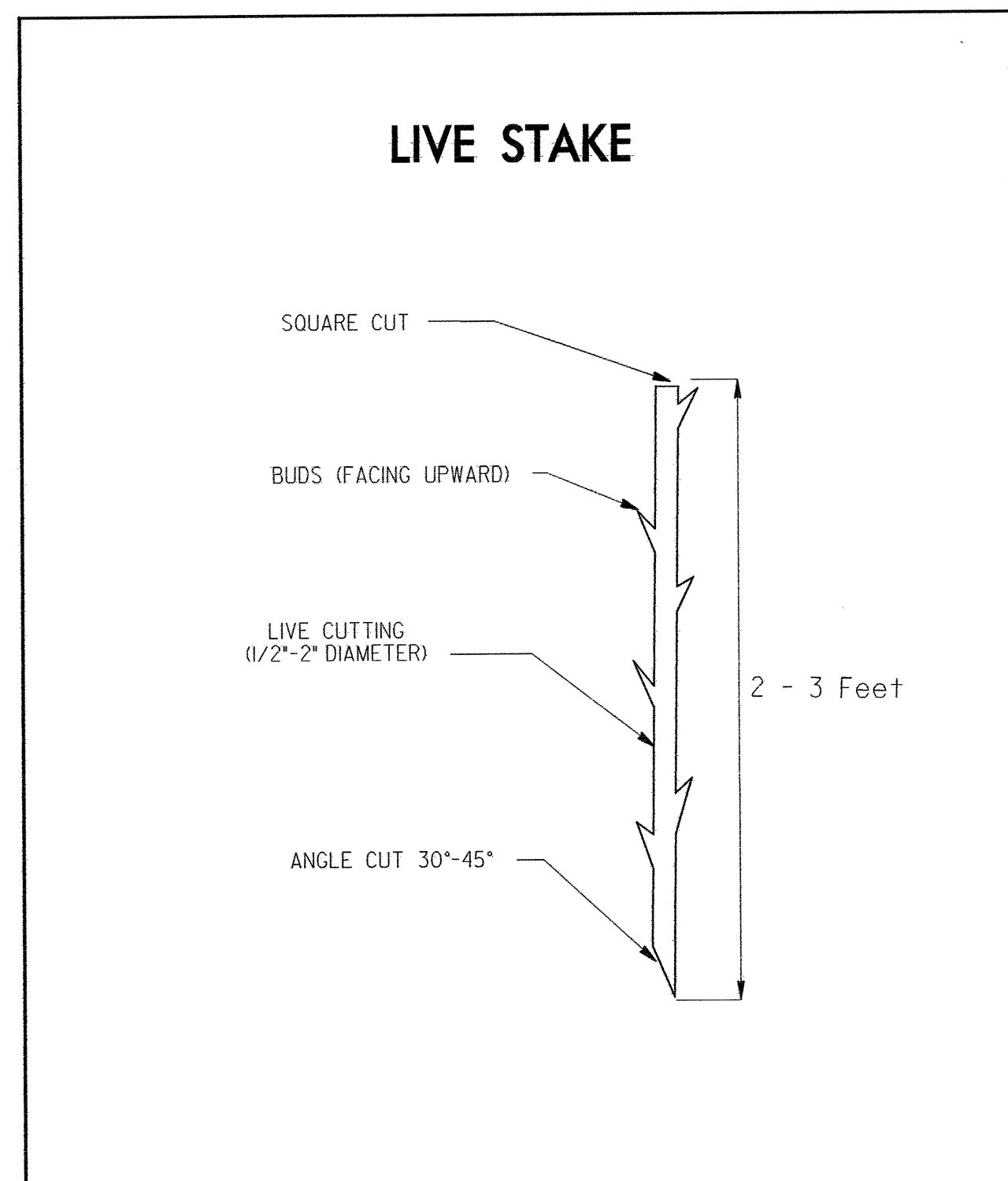


NOTE: THE RESIDENT ENGINEER IS TO CONTACT DIVISION TRAFFIC ENGINEER FOR APPROPRIATE APPROACH CURVE SIGNING PRIOR TO OPENING THE PROJECT FOR TRAFFIC

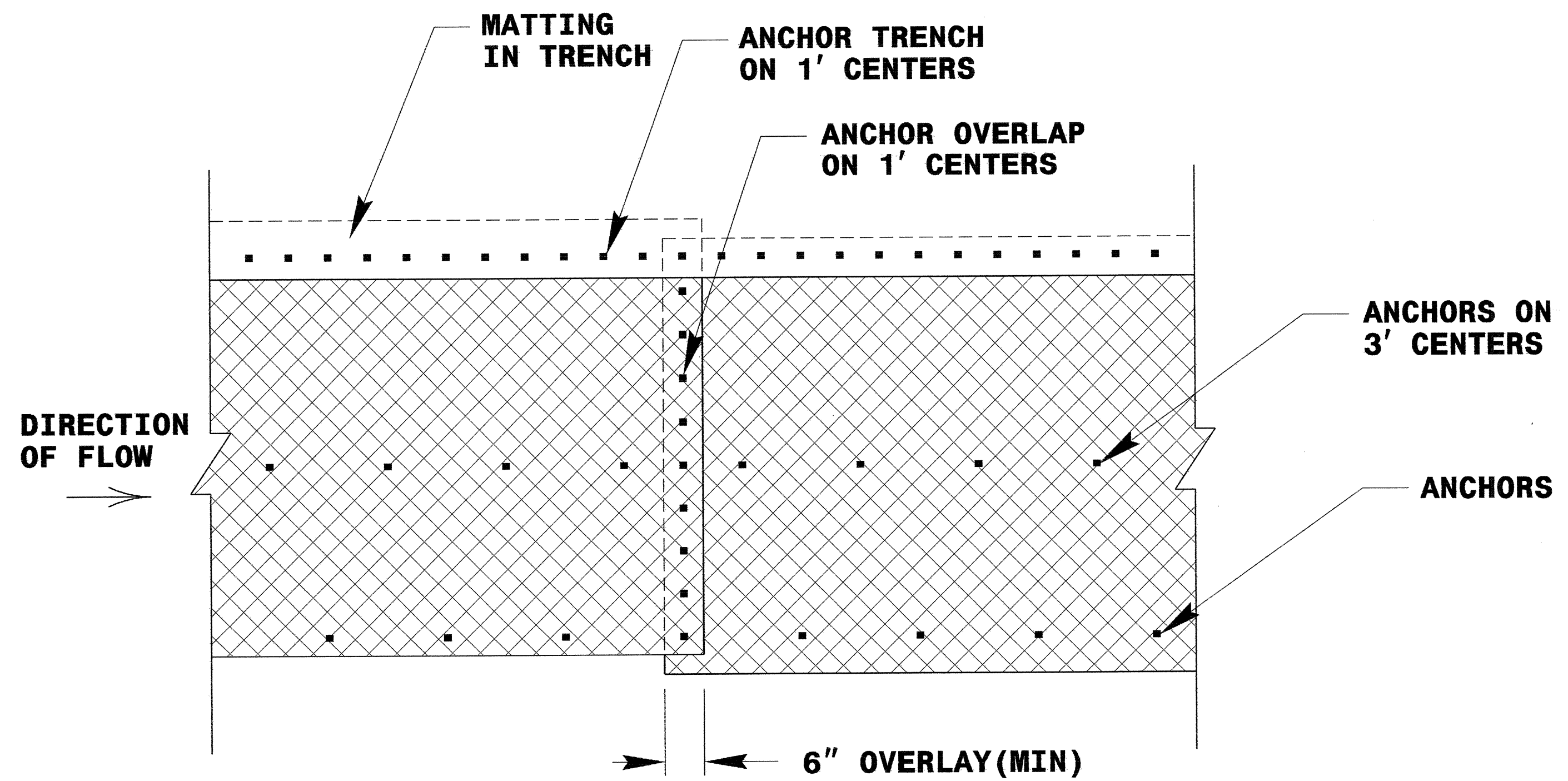
8/17/99  
 I7-JAN-2007 15:12  
 g:\ti\ppro\ec\ss\p\3876\environmental\design\b3876\_rdy\_psh05.dgn  
 d:\han\_HI\_REN\221446

PROJECT REFERENCE NO. B-3876	SHEET NO. EC-8
RW SHEET NO.	
ROADWAY DESIGN ENGINEER	HYDRAULICS ENGINEER

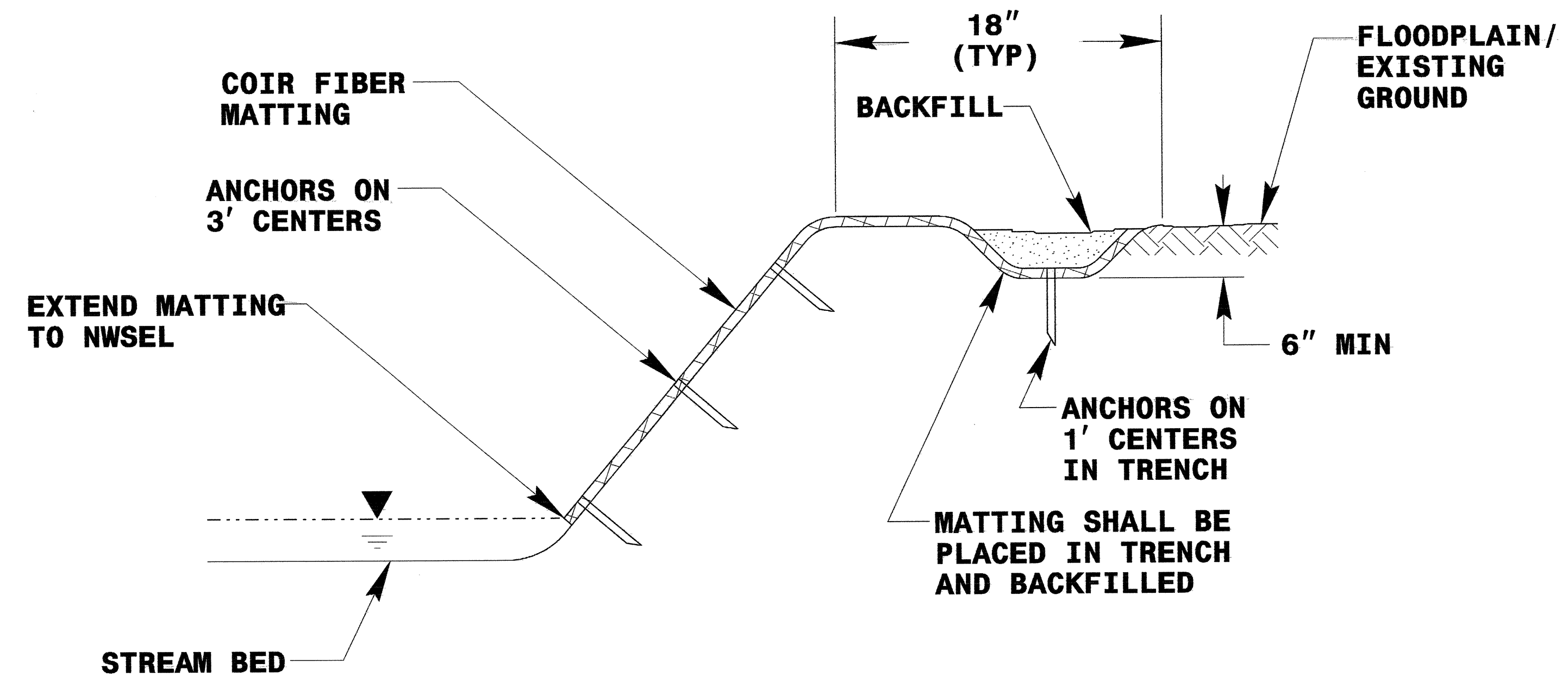
# LIVE STAKES PLANTING DETAILS



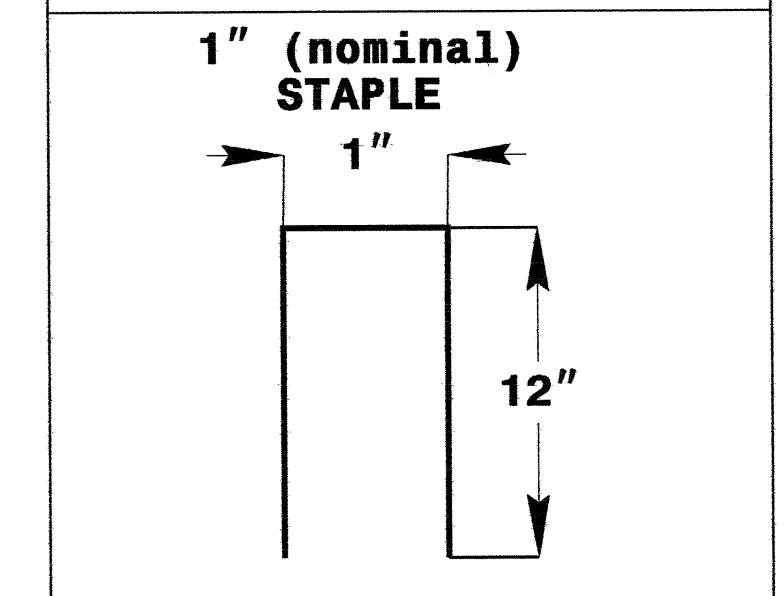
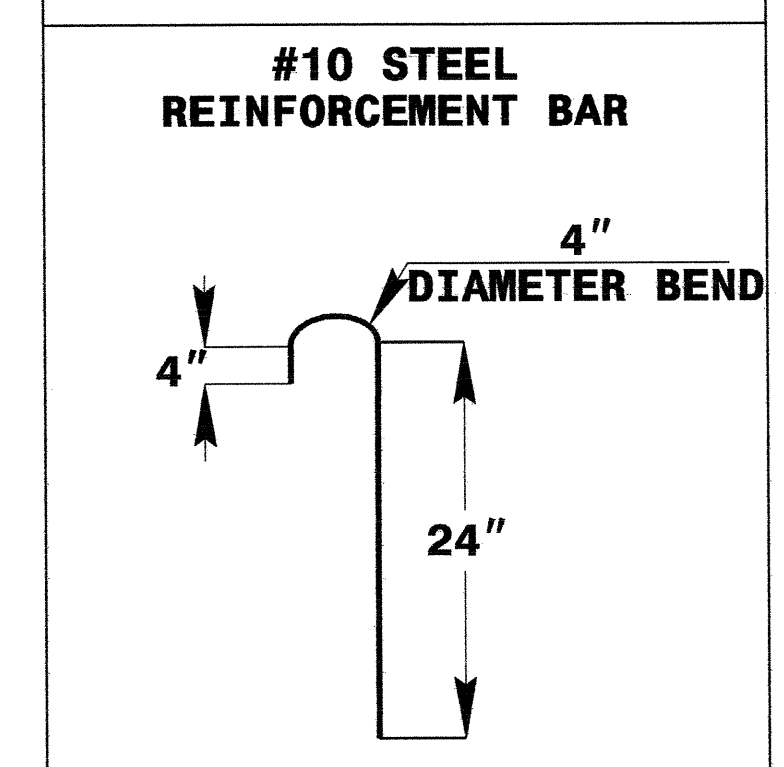
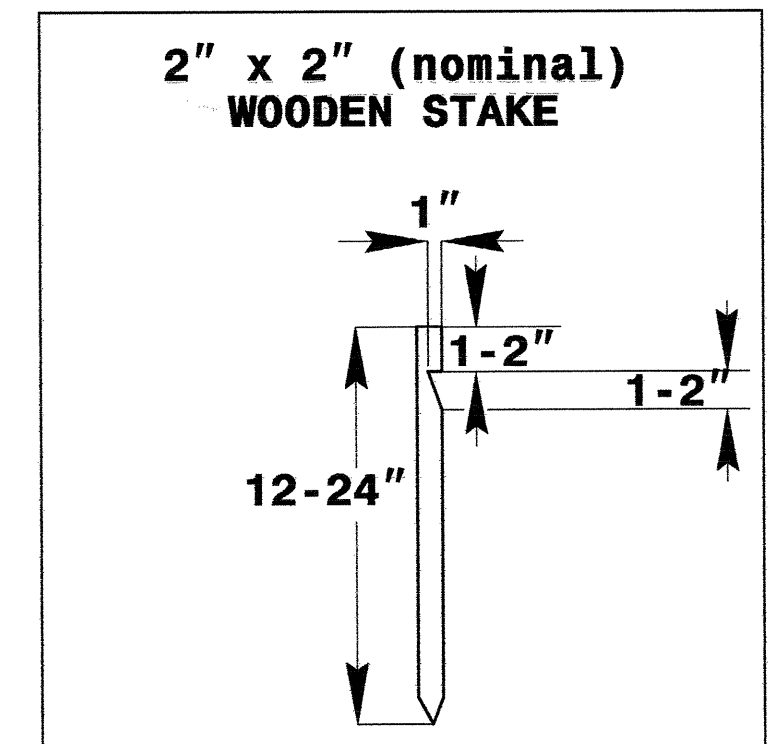
# COIR FIBER MATTING DETAIL



**PLAN VIEW**



**TYPICAL CROSS SECTION**



**ANCHOR OPTIONS**

**LIVE STAKING  
DETAIL SHEET**  
N.C.D.O.T. - ROADSIDE ENVIRONMENTAL UNIT