

C201797

HYDE COUNTY STRUCTURE SUBSURFACE INVESTIGATION

CAUTION NOTICE

THE SUBSURFACE INFORMATION AND THE SUBSURFACE INVESTIGATION ON WHICH IT IS BASED WAS MADE FOR THE PURPOSE OF STUDY, PLANNING AND DESIGN, AND NOT FOR CONSTRUCTION OR PAY PURPOSES. THE VARIOUS FIELD BORING LOGS, ROCK CORES, AND SOIL TEST DATA AVAILABLE MAY BE REVIEWED OR INSPECTED IN RALEIGH BY CONTACTING THE N.C. DEPARTMENT OF TRANSPORTATION, GEOTECHNICAL UNIT @ (919) 250-4088. NEITHER THE SUBSURFACE PLANS AND REPORTS, NOR THE FIELD BORING LOGS, ROCK CORES, OR SOIL TEST DATA IS PART OF THE CONTRACT.

GENERAL SOIL AND ROCK STRATA DESCRIPTIONS AND INDICATED BOUNDARIES ARE BASED ON A GEOTECHNICAL INTERPRETATION OF ALL AVAILABLE SUBSURFACE DATA AND MAY NOT NECESSARILY REFLECT THE ACTUAL SUBSURFACE CONDITIONS BETWEEN BORINGS OR BETWEEN SAMPLED STRATA WITHIN THE BOREHOLE, THE LABORATORY SAMPLE DATA AND THE IN SITU (IN-PLACE) TEST DATA CAN BE RELIED ON ONLY TO THE DEGREE OF RELIABILITY INHERENT IN THE STANDARD TEST METHOD. THE OBSERVED WATER LEVELS OR SOIL MOISTURE CONDITIONS INDICATED IN THE SUBSURFACE INVESTIGATIONS ARE AS RECORDED AT THE TIME OF THE INVESTIGATION. THESE WATER LEVELS OR SOIL MOISTURE CONDITIONS MAY VARY CONSIDERABLY WITH TIME ACCORDING TO CLIMATIC CONDITIONS INCLUDING TEMPERATURES, PRECIPITATION AND WIND, AS WELL AS OTHER NON-CLIMATIC FACTORS.

THE BIDDER OR CONTRACTOR IS CAUTIONED THAT DETAILS SHOWN ON THE SUBSURFACE PLANS ARE PRELIMINARY ONLY AND IN MANY CASES THE FINAL DESIGN DETAILS ARE DIFFERENT. FOR BIDDING AND CONSTRUCTION PURPOSES, REFER TO THE CONSTRUCTION PLANS AND DOCUMENTS FOR FINAL DESIGN INFORMATION ON THIS PROJECT. THE DEPARTMENT DOES NOT WARRANT OR GUARANTEE THE SUFFICIENCY OR ACCURACY OF THE INVESTIGATION MADE, NOR THE INTERPRETATIONS MADE OR OPINION OF THE DEPARTMENT AS TO THE TYPE OF MATERIALS AND CONDITIONS TO BE ENCOUNTERED. THE BIDDER OR CONTRACTOR IS CAUTIONED TO MAKE SUCH INDEPENDENT SUBSURFACE INVESTIGATIONS AS HE DEEMS NECESSARY TO SATISFY HIMSELF AS TO CONDITIONS TO BE ENCOUNTERED ON THIS PROJECT. THE CONTRACTOR SHALL HAVE NO CLAIM FOR ADDITIONAL COMPENSATION OR FOR AN EXTENSION OF TIME FOR ANY REASON RESULTING FROM THE ACTUAL CONDITIONS ENCOUNTERED AT THE SITE DIFFERING FROM THOSE INDICATED IN THE SUBSURFACE INFORMATION.



2736 ROWLAND ROAD
 RALEIGH, NORTH CAROLINA 27615
 Phone (919) 871-0800 Fax (919) 871-0803

N.C.D.O.T. GEOTECHNICAL UNIT
 BORING LOG

SHEET 1 OF 1

PROJECT NO. 6211-05-003		ID.	COUNTY HYDE		GEOLOGIST J. HOWARD										
SITE DESCRIPTION BR #10 ON NC 12 OVER ISLAND CREEK						GROUND WATER (ft)									
BORING NO. EB1B		BORING LOCATION 9+67		OFFSET 18' RT	ALIGNMENT -L-	0 HR.	5.5								
COLLAR ELEV. 100.06 ft		NORTHING		EASTING		24 HR.	7.0								
TOTAL DEPTH 60.0 ft		DRILL MACHINE DIEDRICH 50		DRILL METHOD MUD ROTARY		HAMMER TYPE AUTO									
DATE STARTED 2-21-06		COMPLETED 2-21-06		SURFACE WATER DEPTH N/A											
ELEV. (ft)	DEPTH (ft)	BLOW COUNT			BLOWS PER FOOT					SAMP. NO.	LOG	SOIL AND ROCK DESCRIPTION			
		0.5ft	0.5ft	0.5ft	0	20	40	60	80				100		
100.1															
	0.0	1	1	2									100.1	0.0	
	3.5														
	95	1	2	3									93.6	6.5	RWDY EMB: TAN, V. LOOSE TO LOOSE, FINE SAND (A-3)
	8.5														
	90	4	5	6											
	13.5														
	85	5	5	11											
	18.5														
	80	9	10	15											
	23.5														
	75	7	10	14											
	28.5														
	70	1	1	1									73.1	27.0	CP: DARK GRAY, V. LOOSE, SILTY SAND (A-2-4)
	33.5														
	65	10	11	19									68.6	31.5	CP: GRAY, MED. DENSE TO V. DENSE, FINE SAND (A-3)
	38.5														
	60	11	18	21											
	43.5														
	55	12	18	20											
	48.5														
	50	7	8	9											
	53.5														
	45	12	20	30											
	58.5														
	60	15	21	39									40.1	60.0	BORING TERMINATED @ 60.0' BELOW EXISTING GROUND

NCDOT_BORE_05-003 BR 10 - HYDE CO.GPJ NCDOT.GDT_3/31/06



TIERRA
 GEOTECHNICAL • MATERIALS
 ENGINEERING

2736 ROWLAND ROAD
 RALEIGH, NORTH CAROLINA 27615
 Phone (919) 871-0800 Fax (919) 871-0803

N.C.D.O.T. GEOTECHNICAL UNIT
 BORING LOG

SHEET 1 OF 1

PROJECT NO. 6211-05-003		ID.		COUNTY HYDE		GEOLOGIST J. HOWARD								
SITE DESCRIPTION BR #10 ON NC 12 OVER ISLAND CREEK							GROUND WATER (ft)							
BORING NO. B1A		BORING LOCATION 10+08		OFFSET 7' LT		ALIGNMENT -L-	0 HR. N/A							
COLLAR ELEV. 92.09 ft		NORTHING		EASTING			24 HR. N/A							
TOTAL DEPTH 90.0 ft		DRILL MACHINE DIEDRICH 50		DRILL METHOD MUD ROTARY		HAMMER TYPE AUTO								
DATE STARTED 2-15-06		COMPLETED 2-15-06		SURFACE WATER DEPTH 1.2 FT										
ELEV. (ft)	DEPTH (ft)	BLOW COUNT			BLOWS PER FOOT					SAMP. NO.	MOI	LOG	SOIL AND ROCK DESCRIPTION	
		0.5ft	0.5ft	0.5ft	0	20	40	60	80					100
92.1														
	0.0	1	2	3										
	3.5	3	5	8										
	8.5	8	14	18										
	13.5	9	10	12										
	18.5	8	10	11										
	23.5	1	WOH	1										
	28.5	8	11	15										
	33.5	8	14	16										
	38.5	10	16	18										
	43.5	12	20	41										
	48.5	17	21	30										
	53.5	10	16	20										
	58.5	18	28	38										
	63.5	18	33	43										
	68.5	12	9	5										
	73.5	12	15	16										
	78.5	14	15	36										
	83.5	28	33	40										
	88.5	26	35	60/3										

NCDOT_BORE 05-003 BR 10 - HYDE CO.GPJ NCDOT.GDT 3/31/06

EXISTING GROUND

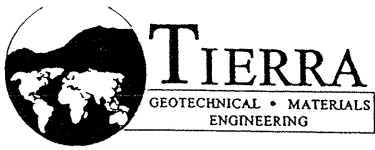
L
O
G

92.1 0.0
 90 3.5
 85 8.5
 80 13.5
 75 18.5
 70 23.5
 65 28.5
 60 33.5
 55 38.5
 50 43.5
 45 48.5
 40 53.5
 35 58.5
 30 63.5
 25 68.5
 20 73.5
 15 78.5
 10 83.5
 5 88.5

SS-1
 SS-2

92.1
 70.1
 65.1
 22.3
 19.6
 2.1

CP: GRAY, LOOSE TO DENSE, FINE SAND (A-3)
 CP: GRAY, V. LOOSE, SILTY SAND (A-2-4) WITH TRACE SHELLS
 CP: GRAY, MED. DENSE TO V. DENSE, FINE SAND (A-3)
 CP: GRAY, SOFT, CLAY (A-7)
 CP: GRAY, DENSE TO V. DENSE, FINE SAND (A-3)
 BORING TERMINATED @ 90.0' BELOW EXISTING GROUND



2736 ROWLAND ROAD
 RALEIGH, NORTH CAROLINA 27615
 Phone (919) 871-0800 Fax (919) 871-0803

N.C.D.O.T. GEOTECHNICAL UNIT
 BORING LOG

SHEET 1 OF 1

PROJECT NO. 6211-05-003			ID.	COUNTY HYDE			GEOLOGIST J. HOWARD							
SITE DESCRIPTION BR #10 ON NC 12 OVER ISLAND CREEK							GROUND WATER (ft)							
BORING NO. B2B		BORING LOCATION 10+80			OFFSET 7' RT		ALIGNMENT -L-		0 HR. N/A					
COLLAR ELEV. 92.44 ft		NORTHING			EASTING		24 HR. N/A							
TOTAL DEPTH 90.0 ft		DRILL MACHINE DIEDRICH 50		DRILL METHOD MUD ROTARY			HAMMER TYPE AUTO							
DATE STARTED 2-15-06			COMPLETED 2-15-06		SURFACE WATER DEPTH 1.3 FT									
ELEV. (ft)	DEPTH (ft)	BLOW COUNT			BLOWS PER FOOT					SAMP. NO.	L O G	SOIL AND ROCK DESCRIPTION		
		0.5ft	0.5ft	0.5ft	0	20	40	60	80				100	
92.4	0.0	WOH			EXISTING GROUND								92.4	0.0
90	3.5	9	9	10	8								CP: GRAY, LOOSE TO V. DENSE, FINE SAND (A-3) WITH TRACE SHELLS	
85	8.5	7	10	14	19									
80	13.5	6	10	16	24									
75	18.5	3	5	15	26									
70	23.5	4	9	15	20					SS-3				
65	28.5	10	12	13	24									
60	33.5	7	11	14	25									
55	38.5	11	15	19	25									
50	43.5	9	17	20	34									
45	48.5	17	34	21	37									
40	53.5	14	28	28	55									
35	58.5	21	31	60/4	56									
30	63.5	1	2	3	60/4					SS-4			30.4	62.0
25	68.5	17	31	33	64								26.4	66.0
20	73.5	17	31	60/4	60/4									
15	78.5	31	43	60/3	60/3									
10	83.5	15	30	60/4	60/4									
5	88.5	WOH			60/4	60/4								
		3	3		6					SS-5	29%		5.4	87.0
													2.4	90.0
												CP: GRAY, MED. STIFF, CLAYEY SILT (A-4)		
												BORING TERMINATED @ 90.0' BELOW EXISTING GROUND		

NCDOT_BORE_05-003 BR 10 - HYDE CO.GPJ NCDOT.GDT 3/31/06



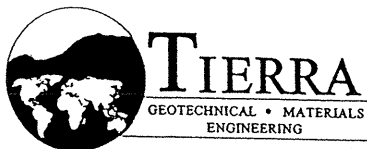
2736 ROWLAND ROAD
 RALEIGH, NORTH CAROLINA 27615
 Phone (919) 871-0800 Fax (919) 871-0803

N.C.D.O.T. GEOTECHNICAL UNIT
 BORING LOG

SHEET 1 OF 1

PROJECT NO. 6211-05-003		ID.		COUNTY HYDE		GEOLOGIST J. HOWARD									
SITE DESCRIPTION BR #10 ON NC 12 OVER ISLAND CREEK							GROUND WATER (ft)								
BORING NO. EB2A		BORING LOCATION 11+10		OFFSET 18' LT		ALIGNMENT -L-									
COLLAR ELEV. 98.96 ft		NORTHING		EASTING		0 HR. 5.5									
TOTAL DEPTH 60.0 ft		DRILL MACHINE DIEDRICH 50		DRILL METHOD MUD ROTARY		HAMMER TYPE AUTO									
DATE STARTED 2-16-06		COMPLETED 2-16-06		SURFACE WATER DEPTH N/A											
ELEV. (ft)	DEPTH (ft)	BLOW COUNT			BLOWS PER FOOT					SAMP. NO.	LOG	SOIL AND ROCK DESCRIPTION			
		0.5ft	0.5ft	0.5ft	0	20	40	60	80				100		
99.0					EXISTING GROUND										
	0.0	1	1	2									99.0	0.0	RDWY EMB: TAN, V. LOOSE TO MED. DENSE, FINE SAND (A-3)
	3.5														
	8.5														
	13.5														
	18.5														
	23.5														
	28.5														
	33.5														
	38.5														
	43.5														
	48.5														
	53.5														
	58.5														
	60.0	18	33	60/4									60.0	60.0	BORING TERMINATED @ 60.0' BELOW EXISTING GROUND

NCDOT_BORE_05-003 BR 10 - HYDE CO.GPJ NCDOT.GDT 3/31/06



2736 ROWLAND ROAD
 RALEIGH, NORTH CAROLINA 27615
 Phone (919) 871-0800 Fax (919) 871-0803

PROJECT NO. 6211-05-004			ID.	COUNTY HYDE	GEOLOGIST J. HOWARD			
SITE DESCRIPTION BR #31 ON NC 12 OVER OLD HAMMOCK CREEK							GROUND WATER (ft) 0 HR. 5.0 24 HR. 6.6	
BORING NO. EB1B	BORING LOCATION 9+75			OFFSET 17' RT	ALIGNMENT -L-			
COLLAR ELEV. 99.40 ft	NORTHING		EASTING					
TOTAL DEPTH 60.0 ft	DRILL MACHINE DIEDRICH 50		DRILL METHOD MUD ROTARY			HAMMER TYPE AUTO		
DATE STARTED 2-14-06		COMPLETED 2-14-06		SURFACE WATER DEPTH N/A				
ELEV. (ft)	DEPTH (ft)	BLOW COUNT			BLOWS PER FOOT 0 20 40 60 80 100	SAMP. NO.	LOG MOI	SOIL AND ROCK DESCRIPTION
		0.5ft	0.5ft	0.5ft				
99.4								EXISTING GROUND
	0.0	1	1	2	3			99.4 0.0
	3.5							
95		1	2	3		SS-1		RWDY EMB: TAN, V. LOOSE TO LOOSE, FINE SAND (A-3)
	8.5							
90		2	2	3				91.4 8.0
	13.5							CP: GRAY, LOOSE, SAND (A-1-b)
85		8	12	13	25			87.4 12.0
	18.5							CP: GRAY, MED. DENSE, FINE SAND (A-3)
80		6	10	11	21	SS-2		
	23.5							
75		6	7	9	16			
	28.5	WOH	WOH	WOH	0			72.9 26.5
70								CP: GRAY, V. SOFT, SANDY CLAY (A-7-6)
	33.5	WOH	2	4	6			66.9 32.5
65								CP: GRAY, LOOSE, SILTY SAND (A-2-4)
	38.5							62.9 36.5
60		2	5	8	13			CP: GRAY, MED. DENSE TO DENSE, FINE SAND (A-3)
	43.5							
55		14	17	21	38			
	48.5							
50		10	14	18	32			
	53.5							
45		13	18	28	46			
	58.5							
40		10	16	24	40			39.4 60.0
								BORING TERMINATED @ 60.0' BELOW EXISTING GROUND

NCDOT_BORE 05-004 BR 31 - HYDE CO.GPJ NCDOT.GDT 4/3/06



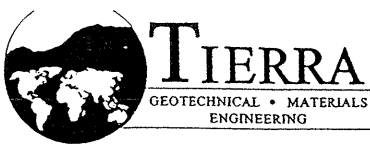
2736 ROWLAND ROAD
 RALEIGH, NORTH CAROLINA 27615
 Phone (919) 871-0800 Fax (919) 871-0803

BORING LOG

SHEET 1 OF 1

PROJECT NO. 6211-05-004		ID.		COUNTY HYDE		GEOLOGIST J. HOWARD							
SITE DESCRIPTION BR #31 ON NC 12 OVER OLD HAMMOCK CREEK							GROUND WATER (ft)						
BORING NO. B1A		BORING LOCATION 10+05		OFFSET 7' LT		ALIGNMENT -L-							
COLLAR ELEV. 90.24 ft		NORTHING		EASTING		0 HR. N/A							
TOTAL DEPTH 90.0 ft		DRILL MACHINE DIEDRICH 50		DRILL METHOD MUD ROTARY		HAMMER TYPE AUTO							
DATE STARTED 2-14-06		COMPLETED 2-14-06		SURFACE WATER DEPTH 1.25 FT									
ELEV. (ft)	DEPTH (ft)	BLOW COUNT			BLOWS PER FOOT					SAMP. NO.	L O G	SOIL AND ROCK DESCRIPTION	
		0.5ft	0.5ft	0.5ft	0	20	40	60	80				100
90.2	0.0	1	1	1	EXISTING GROUND							90.2	0.0
	3.5	7	12	16	2	28					SS-3		CP: GRAY, V. LOOSE TO MED. DENSE, FINE SAND (A-3) WITH TRACE ORGANICS AND TRACE SHELLS
	8.5	8	14	19	3	33							
	13.5	10	11	10	4	21							
	18.5	1	1	2	5	3							CP: GRAY, SOFT TO V. SOFT, SANDY CLAY (A-7-6)
	23.5	WOH	WOH	WOH	6	0					SS-4	42%	
	28.5	7	8	5	7	13							CP: GRAY, MED. DENSE TO DENSE, FINE SAND (A-3) WITH CLAY LENSES
	33.5	13	17	20	8	37							
	38.5	10	10	11	9	21							
	43.5	13	18	20	10	38							
	48.5	18	20	26	11	46							
	53.5	10	9	5	12	14							
	58.5	5	14	16	13	30							
	63.5	7	6	13	14	19							
	68.5	3	4	4	15	8					SS-5		CP: GRAY, LOOSE, SILTY SAND (A-2-4)
	73.5	7	11	15	16	26							CP: GRAY, MED. DENSE TO V. DENSE, FINE SAND (A-3)
	78.5	7	18	34	17	52							
	83.5	13	17	13	18	30							CP: GRAY, MED. DENSE, SAND (A-1-b)
	88.5	7	8	10	19	18							
													BORING TERMINATED @ 90.0' BELOW EXISTING GROUND

NCDOT_BORE 05-004 BR 31 - HYDE CO.GPJ NCDOT.GDT 4/3/06



2736 ROWLAND ROAD
 RALEIGH, NORTH CAROLINA 27615
 Phone (919) 871-0800 Fax (919) 871-0803

PROJECT NO. 6211-05-004		ID.		COUNTY HYDE		GEOLOGIST J. HOWARD								
SITE DESCRIPTION BR #31 ON NC 12 OVER OLD HAMMOCK CREEK						GROUND WATER (ft)								
BORING NO. B2B		BORING LOCATION 10+59		OFFSET 7' RT		ALIGNMENT -L-								
COLLAR ELEV. 91.55 ft		NORTHING		EASTING		0 HR. N/A								
TOTAL DEPTH 90.0 ft		DRILL MACHINE DIEDRICH 50		DRILL METHOD MUD ROTARY		HAMMER TYPE AUTO								
DATE STARTED 2-9-06		COMPLETED 2-9-06		SURFACE WATER DEPTH 0.3 FT										
ELEV. (ft)	DEPTH (ft)	BLOW COUNT			BLOWS PER FOOT					SAMP. NO.	LOG	SOIL AND ROCK DESCRIPTION		
		0.5ft	0.5ft	0.5ft	0	20	40	60	80				100	
91.6	0.0	WOH	WOH	1	EXISTING GROUND							91.6	0.0	
	3.5	3	14	16	●1									CP: GRAY, V. LOOSE TO DENSE, FINE SAND (A-3)
	8.5	11	17	21	●30									
	13.5	1	WOH	WOH	●38									
	18.5	3	3	2	●0					SS-6		78.1	13.5	CP: GRAY, V. LOOSE, SILTY SAND (A-2-4)
	23.5	1	WOH	WOH	●5							74.6	17.0	CP: GRAY, LOOSE, FINE SAND (A-3)
	28.5	2	WOH	3	●0					SS-7	36%	69.6	22.0	CP: GRAY, V. SOFT, SANDY CLAY (A-7-6)
	33.5	12	20	30	●3							64.1	27.5	CP: GRAY, V. LOOSE, SILTY SAND (A-2-4)
	38.5	13	18	27	●50							60.6	31.0	CP: GRAY, DENSE TO MED. DENSE TO V. DENSE, FINE SAND (A-3)
	43.5	14	16	27	●45									
	48.5	14	21	25	●43									
	53.5	7	13	24	●46									
	58.5	2	5	9	●37									
	63.5	12	21	32	●14									
	68.5	1	5	2	●53							24.6	67.0	CP: GRAY, LOOSE, SILTY SAND (A-2-4) WITH TRACE SHELLS
	73.5	5	10	10	●20							19.6	72.0	CP: GRAY, MED. DENSE, FINE SAND (A-3) WITH TRACE SHELLS AND TRACE ORGANICS
	78.5	6	8	10	●18							15.6	76.0	CP: GRAY, MED. DENSE, SAND (A-1-b)
	83.5	12	15	15	●30					SS-8		9.1	82.5	CP: GRAY, MED. DENSE, FINE SAND (A-3)
	88.5	11	14	11	●25							3.1	88.5	CP: GRAY, MED. DENSE, SAND (A-1-b) WITH TRACE SHELLS
												1.6	90.0	BORING TERMINATED @ 90.0' BELOW EXISTING GROUND

NCDOT_BORE 05-004 BR 31 - HYDE CO. GR. J. NCDOT.GDT 4/3/06

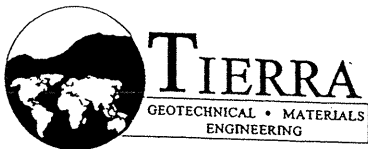


2736 ROWLAND ROAD
 RALEIGH, NORTH CAROLINA 27615
 Phone (919) 871-0800 Fax (919) 871-0803

PROJECT NO. 6211-05-004	ID.	COUNTY HYDE	GEOLOGIST J. HOWARD
SITE DESCRIPTION BR #31 ON NC 12 OVER OLD HAMMOCK CREEK			GROUND WATER (ft)
BORING NO. EB2A	BORING LOCATION 10+84	OFFSET 16' LT	ALIGNMENT -L-
COLLAR ELEV. 99.44 ft	NORTHING	EASTING	0 HR. 6.5 24 HR. 6.5
TOTAL DEPTH 60.0 ft	DRILL MACHINE DIEDRICH 50	DRILL METHOD MUD ROTARY	HAMMER TYPE AUTO
DATE STARTED 2-13-06	COMPLETED 2-13-06	SURFACE WATER DEPTH N/A	

ELEV. (ft)	DEPTH (ft)	BLOW COUNT			BLOWS PER FOOT					SAMP. NO.	MOI	LOG	SOIL AND ROCK DESCRIPTION
		0.5ft	0.5ft	0.5ft	0	20	40	60	80				
99.4					EXISTING GROUND								
	0.0	1	1	1									RDWY EMB: TAN, V. LOOSE, FINE SAND (A-3)
	3.5												
95		1	WOH	1									
	8.5												
90		4	8	9									CP: GRAY, LOOSE TO MED. DENSE, FINE SAND (A-3) WITH TRACE SHELLS
	13.5												
85		3	4	4						SS-9			
	18.5												
80		7	7	10									
	23.5												
75		8	10	12									
	28.5												
70		1	WOH	4									CP: GRAY, LOOSE, SILTY SAND (A-2-4)
	33.5												
65		WOH	WOH	WOH						SS-10	47%		CP: GRAY, V. SOFT, CLAY (A-7-6)
	38.5												
60		1	2	3									CP: GRAY, LOOSE, SILTY SAND (A-2-4)
	43.5												
55		9	10	18									CP: GRAY, MED. DENSE TO V. DENSE, FINE SAND (A-3)
	48.5												
50		11	16	21									
	53.5												
45		10	14	20									
	58.5												
40		16	26	30									
													BORING TERMINATED @ 60.0' BELOW EXISTING GROUND

NCDOT_BORE_05-004_BR_31 - HYDE CO.GPJ NCDOT.GDT 4/3/06



2736 ROWLAND ROAD
 RALEIGH, NORTH CAROLINA 27615
 Phone (919) 871-0800 Fax (919) 871-0803

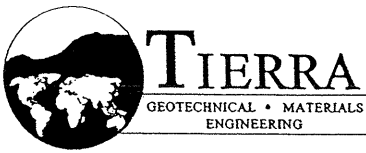
N.C.D.O.T. GEOTECHNICAL UNIT
 BORING LOG

SHEET 1 OF 1

PROJECT NO. 6211-05-002			ID.			COUNTY HYDE			GEOLOGIST J. HOWARD		
SITE DESCRIPTION BR #39 ON NC 12 OVER MOLASSES CREEK									GROUND WATER (ft)		
BORING NO. EB1B			BORING LOCATION 9+75			OFFSET 20' RT		ALIGNMENT -L-		0 HR.	8.5
COLLAR ELEV. 99.71 ft			NORTHING			EASTING			24 HR.	N/A	
TOTAL DEPTH 60.0 ft			DRILL MACHINE DIEDRICH 50		DRILL METHOD MUD ROTARY			HAMMER TYPE AUTO			
DATE STARTED 2-3-06			COMPLETED 2-3-06			SURFACE WATER DEPTH N/A					

ELEV. (ft)	DEPTH (ft)	BLOW COUNT			BLOWS PER FOOT	SAMP. NO.	MOI	LOG	SOIL AND ROCK DESCRIPTION
		0.5ft	0.5ft	0.5ft					
99.7									
	0.0	2	2	1	3			EXISTING GROUND	
	3.5				12				
95		4	5	7				RWDY EMB: TAN, V. LOOSE TO MED. DENSE, FINE SAND (A-3)	
	8.5								
90		8	13	13	26			CP: TAN AND GRAY, MED. DENSE TO V. LOOSE, FINE SAND (A-3) WITH TRACE TO SOME SHELLS	
	15.0								
85		5	9	13	22				
	20.0								
80		4	5	5	10			SS-1	
	25.0								
75		7	10	11	21				
	30.0								
70		1	1	1	2				
	35.0								
65		WOH	WOH	WOH	0			SS-2 66%	
	38.5							67.7 GRAY, V. SOFT, SILTY CLAY (A-7-5) WITH TRACE ORGANICS	
60		14	17	17	34			63.2 CP: GRAY, DENSE, FINE SAND (A-3) WITH TRACE TO SOME SHELLS	
	43.5								
55		14	20	23	43				
	48.5								
50		14	21	24	45				
	53.5								
45		12	18	20	38				
	58.5								
40		12	15	16	31			39.7	
								60.0 BORING TERMINATED @ 60.0' BELOW EXISTING GROUND	

NCDDOT_BORE_05-002 BR 39 - HYDE CO.GPJ NCDOT.GDT 3/31/06



2736 ROWLAND ROAD
 RALEIGH, NORTH CAROLINA 27615
 Phone (919) 871-0800 Fax (919) 871-0803

N.C.D.O.T. GEOTECHNICAL UNIT
 BORING LOG

SHEET 1 OF 1

PROJECT NO. 6211-05-002		ID.		COUNTY HYDE		GEOLOGIST J. HOWARD							
SITE DESCRIPTION BR #39 ON NC 12 OVER MOLASSES CREEK							GROUND WATER (ft)						
BORING NO. B2A		BORING LOCATION 10+75		OFFSET 7' LT		ALIGNMENT -L-							
COLLAR ELEV. 89.14 ft		NORTHING		EASTING		0 HR. N/A							
TOTAL DEPTH 90.0 ft		DRILL MACHINE DIEDRICH 50		DRILL METHOD MUD ROTARY		HAMMER TYPE AUTO							
DATE STARTED 2-8-06		COMPLETED 2-8-06		SURFACE WATER DEPTH 2.3 FT									
ELEV. (ft)	DEPTH (ft)	BLOW COUNT			BLOWS PER FOOT					SAMP. NO.	LOG	SOIL AND ROCK DESCRIPTION	
		0.5ft	0.5ft	0.5ft	0	20	40	60	80				100
89.1	0.0	WOH	WOH	WOH	EXISTING GROUND							89.1	0.0
	3.5									SS-6		CP: BROWN AND GRAY, V. LOOSE TO V. DENSE, FINE SAND (A-3) WITH TRACE SHELLS	
85		2	1	1									
	8.5												
80		3	5	6									
	13.5												
75		3	7	13									
	18.5									SS-7			
70		1	1	4									
	23.5												
65		9	15	18									
	28.5												
60		8	8	9									
	33.5												
55		9	16	21									
	38.5												
50		11	14	20									
	43.5												
45		14	19	24									
	50.0												
40		12	19	24									
	55.0												
35		24	28	30									
	60.0												
30		8	13	17									
	65.0												
25		7	7	8									
	70.0												
20		2	3	4									
	73.5												
15		3	5	9									
	78.5												
10		12	24	60/4									
	83.5												
5		25	36	60/4									
	88.5												
0		3	3	4						SS-8	30%		
												21.6	67.5
												1.1	88.0
												-0.9	90.0

NCDOT_BORE_05-002 BR 39 - HYDE CO.GPJ NCDOT.GDT 3/31/06



2736 ROWLAND ROAD
 RALEIGH, NORTH CAROLINA 27615
 Phone (919) 871-0800 Fax (919) 871-0803

PROJECT NO. 6211-05-002		ID.		COUNTY HYDE		GEOLOGIST J. HOWARD									
SITE DESCRIPTION BR #39 ON NC 12 OVER MOLASSES CREEK							GROUND WATER (ft)								
BORING NO. B3B		BORING LOCATION 11+25		OFFSET 8' RT		ALIGNMENT -L-									
COLLAR ELEV. 86.39 ft		NORTHING		EASTING		0 HR.	N/A								
TOTAL DEPTH 90.0 ft		DRILL MACHINE DIEDRICH 50		DRILL METHOD MUD ROTARY		24 HR.	N/A								
DATE STARTED 2-8-06		COMPLETED 2-8-06		SURFACE WATER DEPTH 3.75 FT		HAMMER TYPE AUTO									
ELEV. (ft)	DEPTH (ft)	BLOW COUNT			BLOWS PER FOOT					SAMP. NO.	MOI	LOG	SOIL AND ROCK DESCRIPTION		
		0.5ft	0.5ft	0.5ft	0	20	40	60	80					100	
86.4					EXISTING GROUND										
85.0	0.0	WOH	3	4	7									86.4	0.0
81.5	3.5		4	5	13									85.9	0.5
78.0	8.5		8	11	25										
73.5	13.5		8	11	25									73.9	12.5
70.0	18.5	WOH	WOH	2	2						SS-9				
66.5	23.5	WOH	WOH	WOH	2						SS-10	62%		67.4	19.0
60.0	28.5		12	13	26									64.4	22.0
55.0	33.5		11	17	38										
50.0	38.5		9	15	31										
45.0	43.5		10	24	54										
40.0	48.5		15	20	44										
35.0	53.5		14	20	41										
30.0	58.5		6	7	18										
25.0	63.5		7	7	17										
20.0	68.5		1	4	10										
15.0	73.5		1	3	8										
10.0	78.5		2	2	10										
5.0	83.5		21	17	18										
0.0	88.5		2	3	4						SS-11	27%		2.9	83.5
			35	17	14									-0.6	87.0
														-3.6	90.0

NCDOT_BORE 05-002 BR 39 - HYDE CO.GPJ NCDOT.GDT 3/31/06



2736 ROWLAND ROAD
 RALEIGH, NORTH CAROLINA 27615
 Phone (919) 871-0800 Fax (919) 871-0803

PROJECT NO. 6211-05-002	ID.	COUNTY HYDE	GEOLOGIST J. HOWARD
-------------------------	-----	-------------	---------------------

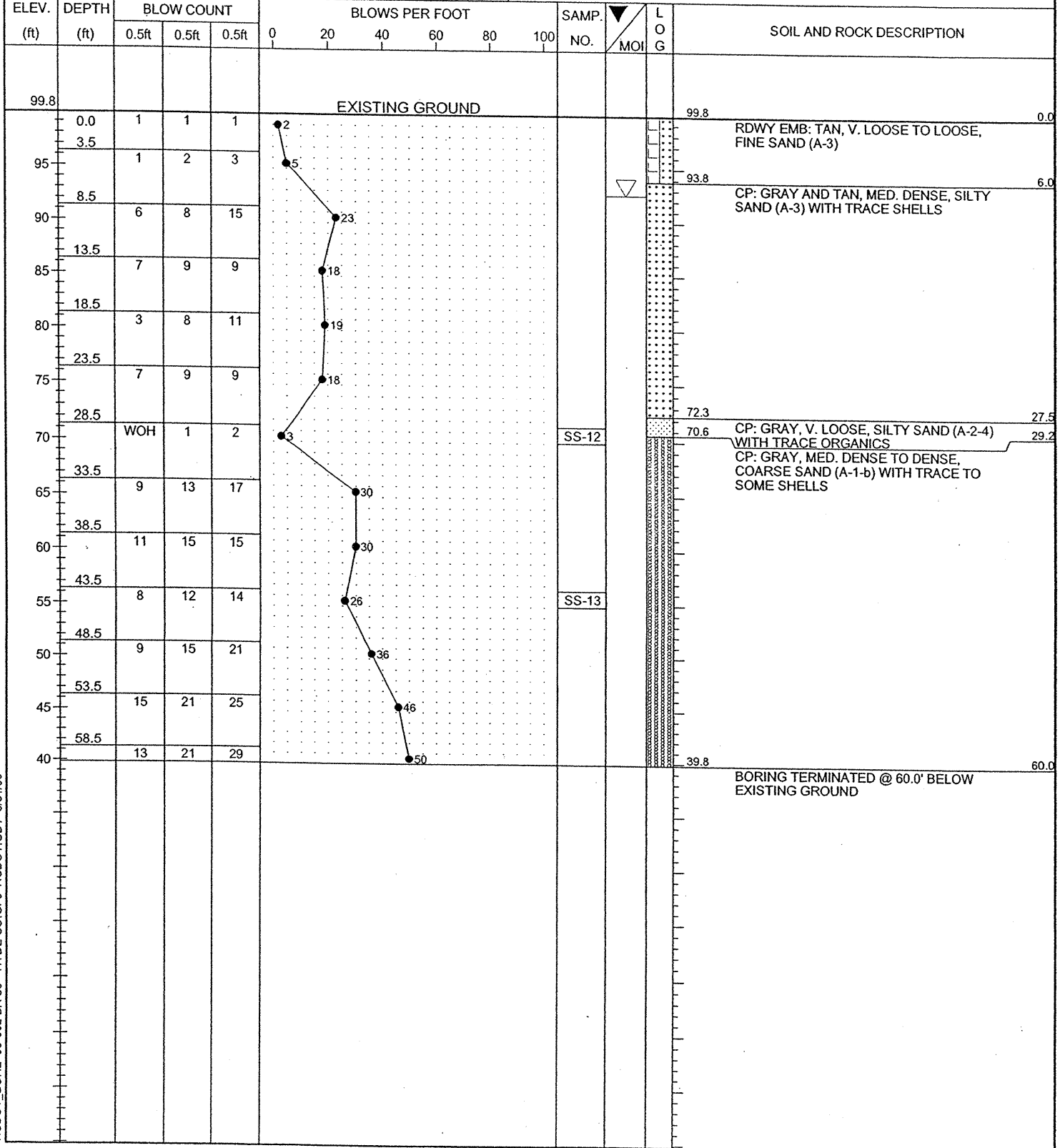
SITE DESCRIPTION BR #39 ON NC 12 OVER MOLASSES CREEK			GROUND WATER (ft)
--	--	--	-------------------

BORING NO. EB2A	BORING LOCATION 11+76	OFFSET 22' LT	ALIGNMENT -L-	0 HR. 7.3
-----------------	-----------------------	---------------	---------------	-----------

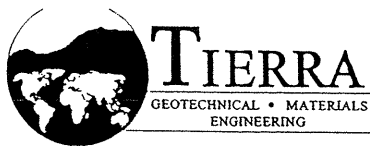
COLLAR ELEV. 99.83 ft	NORTHING	EASTING	24 HR. CAVE 6'
-----------------------	----------	---------	----------------

TOTAL DEPTH 60.0 ft	DRILL MACHINE DIEDRICH 50	DRILL METHOD MUD ROTARY	HAMMER TYPE AUTO
---------------------	---------------------------	-------------------------	------------------

DATE STARTED 2-7-06	COMPLETED 2-7-06	SURFACE WATER DEPTH N/A
---------------------	------------------	-------------------------



NCDOT_BORE_05-002 BR 39 - HYDE CO.GPJ NCDOT.GDT_3/31/06



2736 ROWLAND ROAD
 RALEIGH, NORTH CAROLINA 27615
 Phone (919) 871-0800 Fax (919) 871-0803

N.C.D.O.T. GEOTECHNICAL UNIT
 BORING LOG

SHEET 1 OF 1

PROJECT NO. 6211-05-001		ID.		COUNTY HYDE		GEOLOGIST J. HOWARD									
SITE DESCRIPTION BR #42 ON NC 12 OVER QUORKS POINT CREEK							GROUND WATER (ft)								
BORING NO. EB1B		BORING LOCATION 9+89		OFFSET 20' RT		ALIGNMENT -L-									
COLLAR ELEV. 98.92 ft		NORTHING		EASTING		0 HR. 4.0									
TOTAL DEPTH 60.0 ft		DRILL MACHINE DIEDRICH 50		DRILL METHOD MUD ROTARY		HAMMER TYPE AUTO									
DATE STARTED 1-31-06		COMPLETED 1-31-06		SURFACE WATER DEPTH N/A											
ELEV. (ft)	DEPTH (ft)	BLOW COUNT			BLOWS PER FOOT					SAMP. NO.	LOG	SOIL AND ROCK DESCRIPTION			
		0.5ft	0.5ft	0.5ft	0	20	40	60	80				100		
98.9					EXISTING GROUND										
	0.0	1	1	1	2						SS-1	D	98.9	0.0	RWDY EMB: TAN, V. LOOSE, FINE SAND (A-3)
	3.5				2										
	6.0	1	1	1									93.4	5.5	CP: GRAY, MED. DENSE, FINE SAND (A-3) WITH TRACE SHELLS
	8.5	6	9	12											
	90	6	9	9											
	13.5				12										
	85	5	6	6											
	18.5				14										
	80	7	7	7											
	23.5				11										
	75	3	5	6											
	28.5				23										
	70	7	11	12											
	33.5	1	WOH	WOH											
	65										SS-2	72%	65.9	33.0	CP: GRAY, V. SOFT, SILTY CLAY (A-7-5)
	38.5	1	2	4									60.9	38.0	CP: GRAY, LOOSE TO DENSE, FINE SAND (A-3) WITH TRACE SHELLS
	60										SS-3				
	43.5	11	12	16											
	55				28										
	48.5														
	50	12	17	26											
	45				43										
	53.5	12	16	18											
	40				34										
	58.5	8	9	10											
	40				19								38.9	60.0	BORING TERMINATED @ 60.0' BELOW EXISTING GROUND

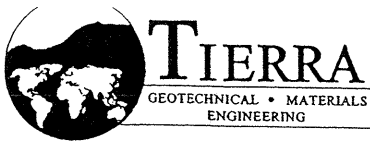
NCDOT_BORE 05-001 BR 42 - HYDE CO.GPJ NCDOT.GDT 3/29/06



2736 ROWLAND ROAD
RALEIGH, NORTH CAROLINA 27615
Phone (919) 871-0800 Fax (919) 871-0803

PROJECT NO. 6211-05-001		ID.	COUNTY HYDE		GEOLOGIST J. HOWARD									
SITE DESCRIPTION BR #42 ON NC 12 OVER QUORKS POINT CREEK						GROUND WATER (ft)								
BORING NO. B1A		BORING LOCATION 10+18		OFFSET 8' LT	ALIGNMENT -L-	0 HR. N/A								
COLLAR ELEV. 92.11 ft		NORTHING		EASTING		24 HR. N/A								
TOTAL DEPTH 100.0 ft		DRILL MACHINE DIEDRICH 50		DRILL METHOD MUD ROTARY		HAMMER TYPE AUTO								
DATE STARTED 2-1-06		COMPLETED 2-1-06		SURFACE WATER DEPTH 0.6 FT										
ELEV. (ft)	DEPTH (ft)	BLOW COUNT			BLOWS PER FOOT					SAMP. NO.	L O G	SOIL AND ROCK DESCRIPTION		
		0.5ft	0.5ft	0.5ft	0	20	40	60	80				100	
92.1					EXISTING GROUND									
	0.0	1	3	3	6						SS-4		92.1 0.0	CP: GRAY, LOOSE TO MED. DENSE, FINE SAND (A-3) WITH TRACE SHELLS
	3.5				15									
	8.5	5	7	8	12									
	13.5	5	6	6	17									
	18.5	8	11	8	19									
	23.5	WOH	WOH	WOH							SS-5 84%		70.1 22.0	CP: GRAY, V. SOFT, SILTY CLAY (A-7-5) WITH TRACE ORGANICS
	28.5	WOH	2	5	7								62.9 29.2	CP: GRAY, LOOSE TO V. DENSE, FINE SAND (A-3) WITH TRACE SHELLS
	33.5	13	17	18	35									
	38.5	5	7	10	17									
	43.5	16	20	22	42									
	50.0	12	17	19	36									
	55.0	7	8	10	18									
	60.0	7	8	6	14									
	65.0	4	4	3	7									
	70.0	10	35	46										
	73.5	34	45	55/4										
	78.5	31	60/4											
	83.5	32	43	58/4										
	88.5	3	3	5							SS-6 27%		-4.1 88.0	CP: GRAY, MED. STIFF, SANDY CLAY (A-6) WITH TRACE ORGANIC AND TRACE SHELLS
	98.5	7	10	14	24								-4.4 96.5	CP: GRAY, MED. DENSE SILTY SAND (A-2-4)
													-7.9 100.0	BORING TERMINATED @ 100.0' BELOW EXISTING GROUND

NCDOT_BORE 05-001 BR 42 - HYDE CO.GPJ NCDOT.GDT 3/29/06



2736 ROWLAND ROAD
 RALEIGH, NORTH CAROLINA 27615
 Phone (919) 871-0800 Fax (919) 871-0803

PROJECT NO. 6211-05-001		ID.	COUNTY HYDE	GEOLOGIST J. HOWARD	
SITE DESCRIPTION BR #42 ON NC 12 OVER QUORKS POINT CREEK					GROUND WATER (ft)
BORING NO. B2B		BORING LOCATION 10+68		OFFSET 8' RT	ALIGNMENT -L-
COLLAR ELEV. 92.81 ft		NORTHING		EASTING	
TOTAL DEPTH 90.0 ft		DRILL MACHINE DIEDRICH 50		DRILL METHOD MUD ROTARY	
DATE STARTED 2-2-06		COMPLETED 2-2-06		SURFACE WATER DEPTH N/A	
				HAMMER TYPE AUTO	

ELEV. (ft)	DEPTH (ft)	BLOW COUNT			BLOWS PER FOOT					SAMP. NO.	L O G	SOIL AND ROCK DESCRIPTION
		0.5ft	0.5ft	0.5ft	0	20	40	60	80			
92.8					EXISTING GROUND							
90	0.0	1	3	4	7							CP: GRAY, LOOSE TO MED. DENSE, FINE SAND (A-3) WITH TRACE SHELLS
	3.5	5	7	8	15							
85	8.5	7	7	9	16							
80	13.5	3	5	6	11							
75	18.5	4	5	7	12							
70	23.5	WOH	WOH	WOH	4							
65	28.5	1	2	2	4					SS-7 76%		CP: GRAY, V. SOFT, SILTY CLAY (A-7-5) WITH TRACE ORGANICS
60	33.5	12	14	16	30					SS-8		CP: GRAY, LOOSE TO V. DENSE, FINE SAND (A-3) WITH TRACE SHELLS
55	38.5	8	12	13	25							
50	43.5	16	21	27	48							
45	48.5	5	6	8	14							
40	53.5	6	10	11	21							
35	58.5	8	11	14	25							
30	63.5	3	4	4	8							
25	68.5	19	60/4		60/4							
20	73.5	39	60/4		60/4							
15	78.5	26	39	60/4	60/4							
10	83.5	28	40	37	77							
5	88.5	3	3	4								
												CP: GRAY, MED. STIFF, SANDY CLAY (A-6) WITH TRACE SHELLS
												BORING TERMINATED @ 90.0' BELOW EXISTING GROUND

NCDOT_BORE_05-001 BR 42 - HYDE CO.GPJ NCDOT.GDT 3/29/06



TIERRA
 GEOTECHNICAL • MATERIALS
 ENGINEERING

2736 ROWLAND ROAD
 RALEIGH, NORTH CAROLINA 27615
 Phone (919) 871-0800 Fax (919) 871-0803

N.C.D.O.I. GEOTECHNICAL UNIT
 BORING LOG

SHEET 1 OF 1

PROJECT NO. 6211-05-001	ID.	COUNTY HYDE	GEOLOGIST J. HOWARD
SITE DESCRIPTION BR #42 ON NC 12 OVER QUORKS POINT CREEK			
BORING NO. EB2A	BORING LOCATION 11+18	OFFSET 20' LT	ALIGNMENT -L-
COLLAR ELEV. 100.01 ft	NORTHING	EASTING	GROUND WATER (ft) 0 HR. 7.0 24 HR. 10.0
TOTAL DEPTH 60.0 ft	DRILL MACHINE DIEDRICH 50	DRILL METHOD MUD ROTARY	HAMMER TYPE AUTO
DATE STARTED 2-2-06	COMPLETED 2-2-06	SURFACE WATER DEPTH N/A	

ELEV. (ft)	DEPTH (ft)	BLOW COUNT			BLOWS PER FOOT					SAMP. NO.	MOI	LOG	SOIL AND ROCK DESCRIPTION	
		0.5ft	0.5ft	0.5ft	0	20	40	60	80					100
100.0	0.0	1	1	1										EXISTING GROUND
95.0	3.5	1	1	2										RDWY EMB: GRAY, TAN, V. LOOSE, FINE SAND (A-3) WITH GRAVEL
90.0	8.5	5	7	7										CP: TAN AND GRAY, LOOSE TO MED. DENSE, FINE SAND (A-3) WITH TRACE SHELLS
85.0	13.5	3	3	4										
80.0	18.5	7	8	14										
75.0	23.5	7	10	12										
70.0	28.5	7	7	7										
65.0	33.5	WOH	WOH	WOH										CP: GRAY, V. SOFT, SILTY CLAY (A-7-5) WITH TRACE ORGANICS
60.0	38.5	1	2	4							SS-9	76%		CP: GRAY, LOOSE TO DENSE, FINE SAND (A-3) WITH TRACE SHELLS
55.0	43.5	9	12	13										
50.0	48.5	6	13	11										
45.0	53.5	12	16	18										
	58.5	5	8	12										
														BORING TERMINATED @ 60.0' BELOW EXISTING GROUND

NCDOT_BORE 05-001 BR 42 - HYDE CO.GPJ NCDOT.GDT 3/29/06



2736 ROWLAND ROAD
 RALEIGH, NORTH CAROLINA 27615
 Phone (919) 871-0800 Fax (919) 871-0803

N.C.D.O.T. GEOTECHNICAL UNIT
 BORING LOG

SHEET 1 OF 1

PROJECT NO. 6211-07-008	ID.	COUNTY HYDE COUNTY, NC	GEOLOGIST S. HAN
SITE DESCRIPTION BRIDGE #46 ON NC 12 OVER PARKER CREEK			GROUND WATER (ft)
BORING NO. EB1	BORING LOCATION 14+69	OFFSET 11' LT	ALIGNMENT
COLLAR ELEV. 7 ft	NORTHING	EASTING	0 HR. 6
TOTAL DEPTH 60.0 ft	DRILL MACHINE CME 45	DRILL METHOD MUD ROTARY	24 HR. 7.5
DATE STARTED 3-5-07	COMPLETED 3-5-07	SURFACE WATER DEPTH N/A	
HAMMER TYPE MANUAL			

ELEV. (ft)	DEPTH (ft)	BLOW COUNT			BLOWS PER FOOT						SAMP. NO.	L O G	SOIL AND ROCK DESCRIPTION	
		0.5ft	0.5ft	0.5ft	0	20	40	60	80	100				
7.0					EXISTING GROUND									
5	1.0	3	4	4									W	RDWY EMB: GRAY AND BROWN, LOOSE TO V. LOOSE TO MED. DENSE, SAND (A-3)
	3.5	3	2	1									W	
	6.0	3	3	4									W	
	8.5	3	6	10									W	
	13.5	22	31	31									W	CP: GRAY, BROWN AND TAN, V. DENSE TO DENSE, SAND (A-3)
	18.5	18	19	24									W	
	23.5	21	36	44									W	
	28.5	21	32	31									SS-1	
	33.5	27	25	31									W	
	38.5	17	23	25									W	
	43.5	24	32	29									W	
	48.5	2	2	2									W	CP: BROWN, GRAY AND TAN, V. LOOSE, SILTY SAND (A-2-4)
	53.5	7	10	13									W	CP: BROWN, GRAY AND TAN, MED. DENSE, SAND (A-3)
	58.5	7	8	6									W	
														BORING TERMINATED AT 60.0' BELOW EXISTING GROUND

DRAFT

NCDOT_BORE 07-008 BRIDGE 46.GPJ NCDOT.GDT 4/6/07



2736 ROWLAND ROAD
 RALEIGH, NORTH CAROLINA 27615
 Phone (919) 871-0800 Fax (919) 871-0803

N.C.D.O.T. GEOTECHNICAL UNIT
 BORING LOG

SHEET 1 OF 1

PROJECT NO. 6211-07-008		ID.		COUNTY HYDE COUNTY, NC		GEOLOGIST S. HAN								
SITE DESCRIPTION BRIDGE #46 ON NC 12 OVER PARKER CREEK							GROUND WATER (ft)							
BORING NO. B1		BORING LOCATION 15+03		OFFSET 5' RT		ALIGNMENT								
COLLAR ELEV. 0 ft		NORTHING		EASTING		0 HR.	N/A							
TOTAL DEPTH 65.0 ft		DRILL MACHINE CME 45		DRILL METHOD MUD ROTARY		24 HR.	N/A							
DATE STARTED 3-6-07		COMPLETED 3-6-07		SURFACE WATER DEPTH 3'		HAMMER TYPE MANUAL								
ELEV. (ft)	DEPTH (ft)	BLOW COUNT			BLOWS PER FOOT					SAMP. NO.	MOI	LOG	SOIL AND ROCK DESCRIPTION	
		0.5ft	0.5ft	0.5ft	0	20	40	60	80					100
0.0														
	0.0	2	7	11										0.0
	3.5													
	-5	20	21	20										
	8.5													
	-10	16	15	16										
	13.5													
	-15	15	20	18										
	18.5													
	-20	20	25	30										
	23.5													
	-25	23	27	40										
	28.5													
	-30	20	24	32										
	33.5													
	-35	21	32	43										
	38.5													
	-40	2	1	2										
	43.5													
	-45	8	15	20										
	48.5													
	-50	6	9	13										
	53.5													
	-55	33	52	50/4										
	58.5													
	-60	49	50/4											
	63.5													
	-65	3	3	10										

DRAFT

NCDOT_BORE 07-008 BRIDGE 46.GPJ NCDOT.GDT 4/6/07



TIERRA
 GEOTECHNICAL • MATERIALS
 ENGINEERING

2736 ROWLAND ROAD
 RALEIGH, NORTH CAROLINA 27615
 Phone (919) 871-0800 Fax (919) 871-0803

N.C.D.O.T. GEOTECHNICAL UNIT
 BORING LOG

SHEET 1 OF 1

PROJECT NO. 6211-07-008		ID.		COUNTY HYDE COUNTY, NC		GEOLOGIST S. HAN									
SITE DESCRIPTION BRIDGE #46 ON NC 12 OVER PARKER CREEK							GROUND WATER (ft)								
BORING NO. B2		BORING LOCATION 15+51		OFFSET 5' LT		ALIGNMENT									
COLLAR ELEV. 1 ft		NORTHING		EASTING		0 HR. 0									
TOTAL DEPTH 75.0 ft		DRILL MACHINE CME 45		DRILL METHOD MUD ROTARY		HAMMER TYPE MANUAL									
DATE STARTED 3-6-07		COMPLETED 3-6-07		SURFACE WATER DEPTH N/A											
ELEV. (ft)	DEPTH (ft)	BLOW COUNT			BLOWS PER FOOT.					SAMP. NO.	LOG	SOIL AND ROCK DESCRIPTION			
		0.5ft	0.5ft	0.5ft	0	20	40	60	80				100		
1.0					EXISTING GROUND										
0	0.0	14	7	5							SS-6	W	1.0	0.0	CP: GRAY, BROWN AND TAN, MED. DENSE TO DENSE TO V. DENSE, SAND (A-3)
	3.5	7	6	5								W			
	8.5	14	17	17								W			
	13.5	17	17	20								W			
	18.5	22	22	28								W			
	23.5	25	24	28								W			
	28.5	16	21	25								W			
	33.5	19	22	28								W			
	38.5	16	20	32								W			
	43.5	2	1	1							SS-7	W	-41.5	42.5	CP: BROWN, GRAY AND TAN, V. LOOSE, SILTY SAND (A-2-4)
	48.5	6	9	12								W	-46.5	47.5	CP: GRAY, BROWN AND TAN, MED. DENSE TO V. DENSE, SAND (A-3)
	53.5	10	11	13								W			
	58.5	42	50	65								W			
	63.5	40	35	31								W			
	68.5	5	1	8								W	-66.5	67.5	CP: GRAY, BROWN AND TAN, LOOSE, SILTY SAND (A-2-4)
	73.5	14	50/4									W	-71.0	72.0	CP: GRAY, BROWN AND TAN, V. DENSE, SAND (A-3)
												W	-74.0	75.0	BORING TERMINATED AT 75.0' BELOW EXISTING GROUND

DRAFT

NCDOT_BORE_07-008 BRIDGE 46.GPJ NCDOT.GDT_4/6/07



2736 ROWLAND ROAD
 RALEIGH, NORTH CAROLINA 27615
 Phone (919) 871-0800 Fax (919) 871-0803

N.C.D.O.T. GEOTECHNICAL UNIT
 BORING LOG

SHEET 1 OF 1

PROJECT NO. 6211-07-008	ID.	COUNTY HYDE COUNTY, NC	GEOLOGIST S. HAN
SITE DESCRIPTION BRIDGE #46 ON NC 12 OVER PARKER CREEK			GROUND WATER (ft)
BORING NO. EB2	BORING LOCATION 15+86	OFFSET 16' RT	ALIGNMENT
COLLAR ELEV. 7 ft	NORTHING	EASTING	0 HR. 6.5 24 HR. CAVE @ 7
TOTAL DEPTH 60.0 ft	DRILL MACHINE CME 45	DRILL METHOD MUD ROTARY	HAMMER TYPE MANUAL
DATE STARTED 3-5-07	COMPLETED 3-5-07	SURFACE WATER DEPTH N/A	

ELEV. (ft)	DEPTH (ft)	BLOW COUNT			BLOWS PER FOOT					SAMP. NO.	LOG	SOIL AND ROCK DESCRIPTION					
		0.5ft	0.5ft	0.5ft	0	20	40	60	80				100				
7.0		EXISTING GROUND										7.0		0.0			
5	1.0	3	2	4							6	W	RDWY EMB: GRAY, LOOSE TO MED. DENSE, SAND (A-3)				
	3.5	3	3	3							6	W					
0	6.0	8	12	16								W					
	8.5	8	12	11							28	W					
											23	SS-8					
-5	13.5	19	19	21							40	W	CP: GRAY, BROWN AND TAN, DENSE TO V. DENSE, SAND (A-3)				
	18.5	15	18	22							40	W					
	23.5	18	26	30							56	W					
	28.5	17	24	27							51	W					
	33.5	19	26	34							60	W					
	38.5	10	22	25							47	W					
	43.5	17	38	50/4							50/4	W					
	48.5	2	1	1							2	SS-9	CP: GRAY, BROWN AND TAN, V. LOOSE, SILTY SAND (A-2-4)	47.5			
	53.5	9	13	16							29	W	CP: GRAY, BROWN AND TAN, MED. DENSE, SAND (A-3)	52.5			
	58.5	8	11	17							28	W		60.0			
					BORING TERMINATED AT 60.0' BELOW EXISTING GROUND												

NCDOT_BORE_07-008 BRIDGE 46.GPJ NCDOT_GDT_4/6/07

DRAFT



2736 ROWLAND ROAD
RALEIGH, NORTH CAROLINA 27615
Phone (919) 871-0800 Fax (919) 871-0803

N.C.D.O.T. GEOTECHNICAL UNIT
BORING LOG

SHEET 1 OF 1

PROJECT NO. 6211-07-008	ID.	COUNTY HYDE COUNTY, NC	GEOLOGIST S. HAN
SITE DESCRIPTION BRIDGE #49 ON NC 12 OVER TRY YARD CREEK			GROUND WATER (ft)
BORING NO. B2	BORING LOCATION 15+47	OFFSET 5' LT	ALIGNMENT
COLLAR ELEV. 8 ft	NORTHING	EASTING	0 HR. 4.8 24 HR. 8.5
TOTAL DEPTH 70.0 ft	DRILL MACHINE CME 45	DRILL METHOD MUD ROTARY	HAMMER TYPE MANUAL
DATE STARTED 3-7-07	COMPLETED 3-7-07	SURFACE WATER DEPTH N/A	

ELEV. (ft)	DEPTH (ft)	BLOW COUNT			BLOWS PER FOOT						SAMP. NO.	LOG	SOIL AND ROCK DESCRIPTION	
		0.5ft	0.5ft	0.5ft	0	20	40	60	80	100				
8.0		EXISTING GROUND												
	1.0	7	10	9										RDWY EMB: GRAY AND TAN, MED. DENSE TO LOOSE, SAND (A-3) WITH ROCK FRAGMENTS
	3.5	9	9	8								W		
	6.0	6	5	4								W		
	8.5	3	4	5								W		
	13.5	10	9	10							SS-5	W		
	18.5	10	13	17								W		
	23.5	12	12	14								W		
	28.5	15	18	24								W		
	33.5	7	3	3							SS-6	W		CP: GRAY, BROWN AND TAN, LOOSE, SAND (A-3)
	38.5	17	10	12							SS-7	W		CP: GRAY, BROWN AND TAN, MED. DENSE TO V. DENSE, SAND (A-3)
	43.5	20	23	29								W		
	48.5	22	24	39								W		
	53.5	16	26	43								W		
	58.5	19	20	32								W		
	63.5	50	50/4									W		
	68.5	11	27	28								W		
		BORING TERMINATED AT 70.0' BELOW EXISTING GROUND												

NCDOT_BORE_07-008 BRIDGE 49.GPJ NCDOT.GDT 4/13/07

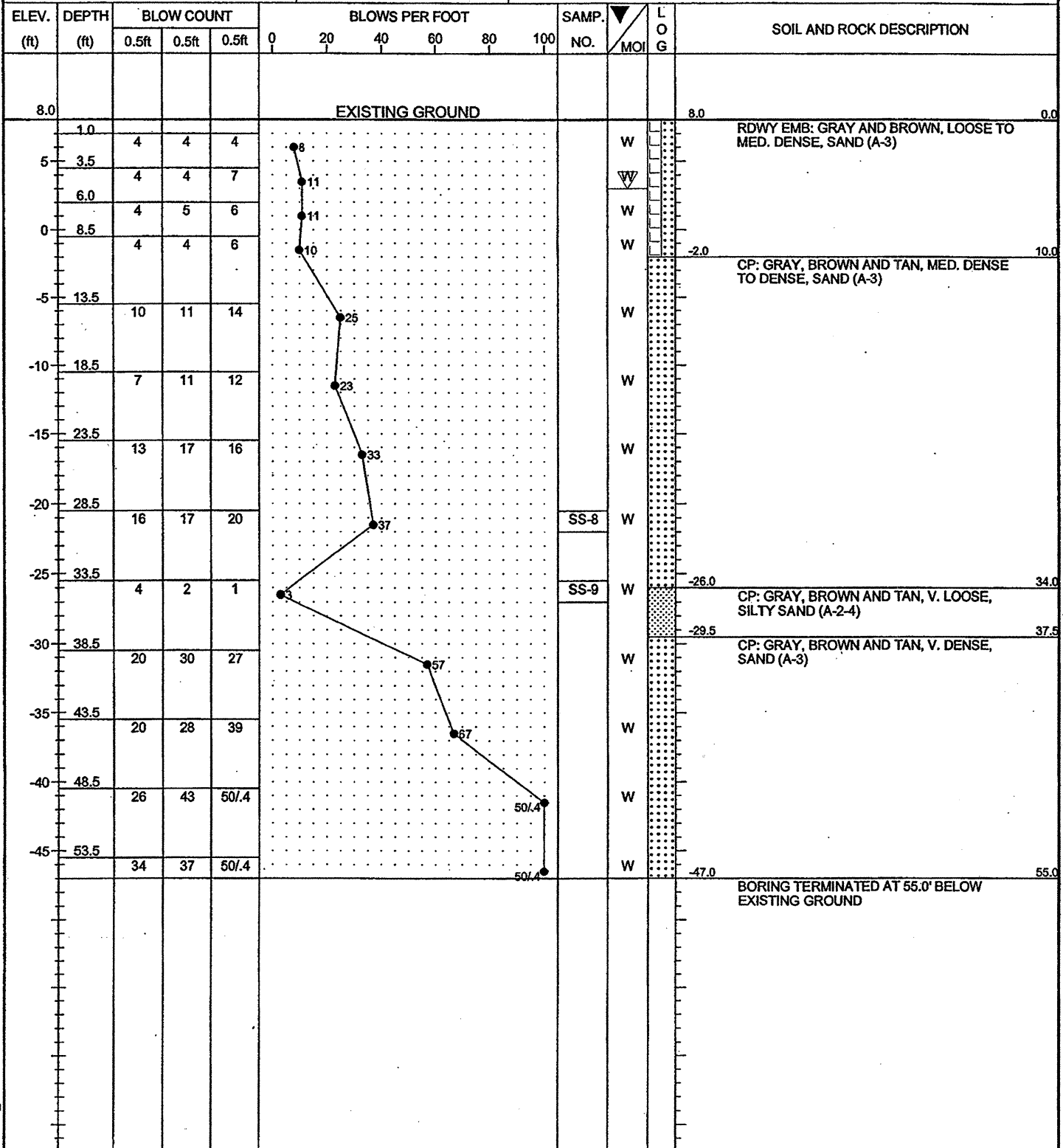


2736 ROWLAND ROAD
RALEIGH, NORTH CAROLINA 27615
Phone (919) 871-0800 Fax (919) 871-0803

N.C.D.O.T. GEOTECHNICAL UNIT
BORING LOG

SHEET 1 OF 1

PROJECT NO. 6211-07-008	ID.	COUNTY HYDE COUNTY, NC	GEOLOGIST S. HAN	
SITE DESCRIPTION BRIDGE #49 ON NC 12 OVER TRY YARD CREEK			GROUND WATER (ft)	
BORING NO. EB2	BORING LOCATION 15+78	OFFSET 15' RT	ALIGNMENT	0 HR. 5
COLLAR ELEV. 8 ft	NORTHING	EASTING		24 HR. CAVE @ 7
TOTAL DEPTH 55.0 ft	DRILL MACHINE CME 45	DRILL METHOD MUD ROTARY	HAMMER TYPE MANUAL	
DATE STARTED 3-5-07	COMPLETED 3-5-07	SURFACE WATER DEPTH N/A		



NCDOT_BORE 07-008 BRIDGE 49.GPJ NCDOT.GDT 4/13/07