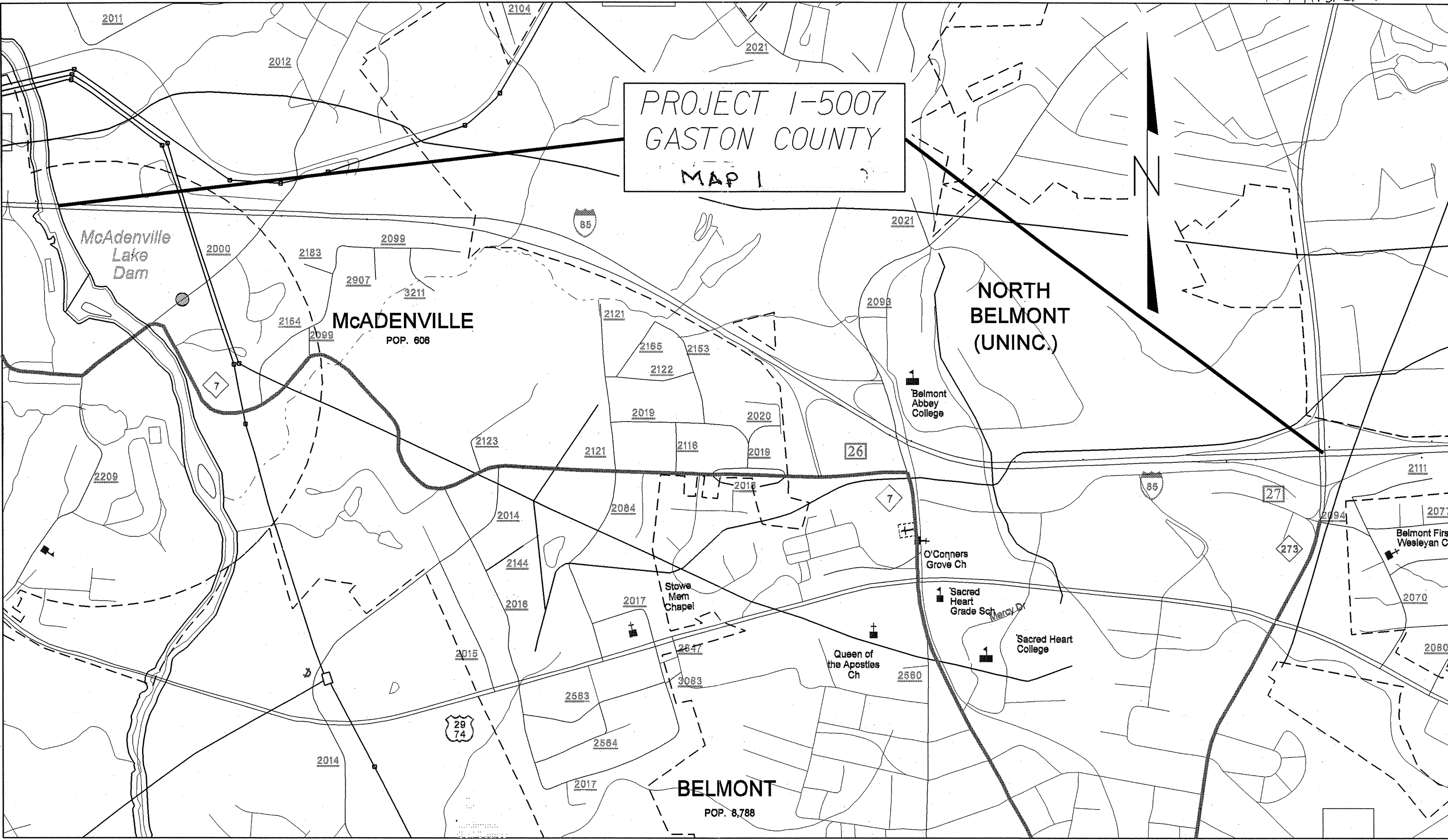
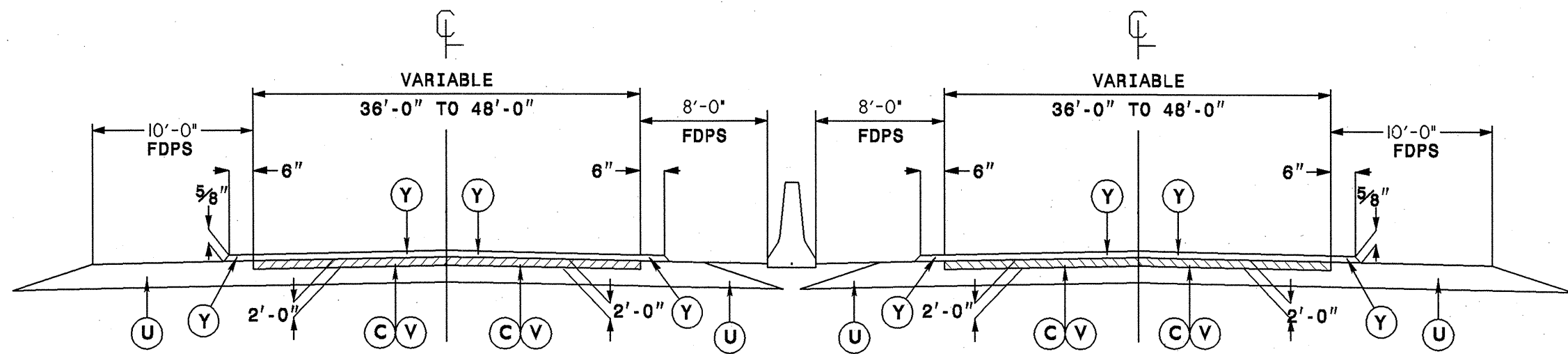
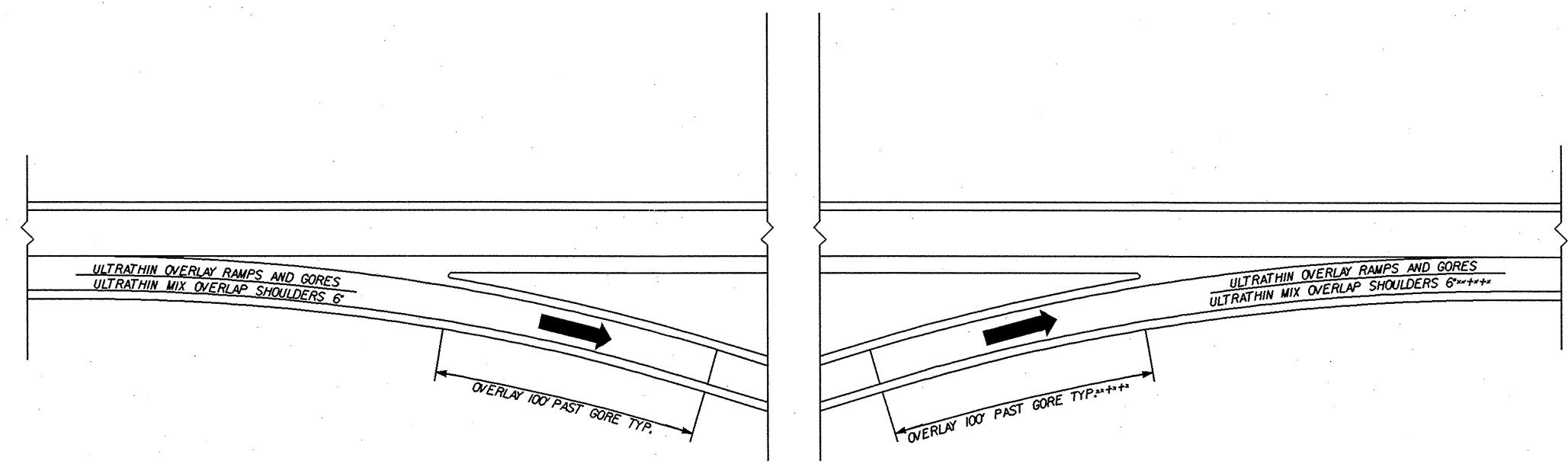


PROJECT I-5007  
GASTON COUNTY  
MAP 1

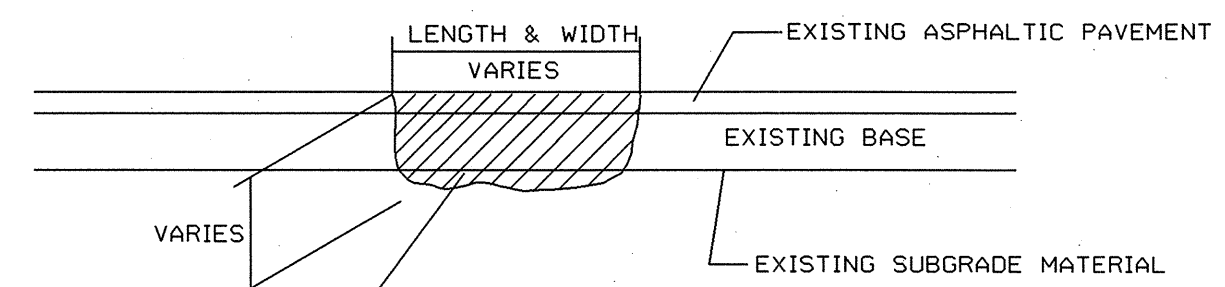




**TYPICAL SECTION NO. 1**



*DETAIL OF GORE AND RAMP RESURFACING*



MILL EXISTING ASPHALT PAVEMENT AND REMOVE EXISTING LOOSE BASE AND/OR SUBGRADE MATERIAL AND REPLACE WITH ACBC OR ACSC AS DIRECTED BY THE ENGINEER

**PATCHING EXISTING PAVEMENT**

C	PROP. APPROX. 2" ASPHALT CONCRETE SURFACE COURSE, TYPE 89.5D, AT AN AVERAGE RATE OF 224 LBS. PER SQ. YD.
U	EXISTING PAVEMENT.
V	MILLING BITUMINOUS PAVEMENT. 2" DEPTH.
Y	PROP. APPROX. 5/8" ULTRA-THIN BONDED WEARING COURSE, AT AN AVERAGE RATE OF 70 LBS. PER SQ. YD. PER 5/8" DEPTH

NOTE: PAVEMENT EDGE SLOPES 1:1 UNLESS OTHERWISE SHOWN

PROJECT NO.	SHEET NO.	TOTAL NO.
I-5007, 41471.3.GV1	3	3

## SUMMARY OF QUANTITIES

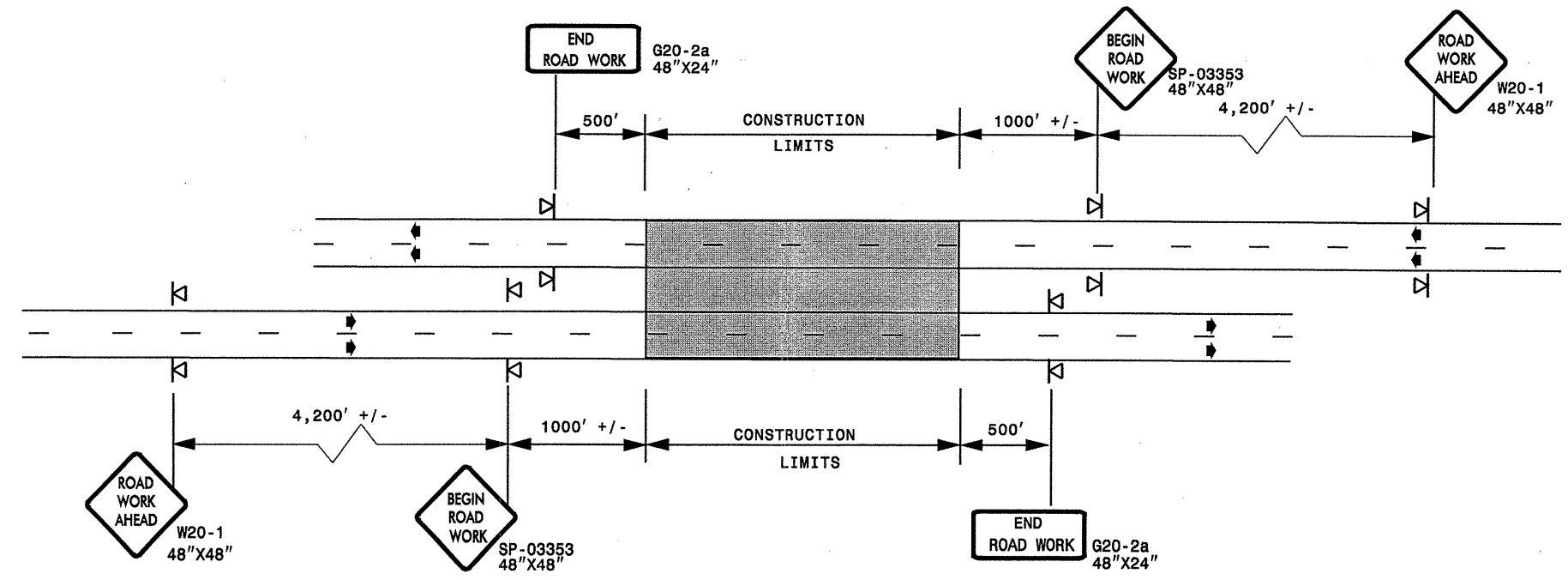
PROJECT NO	COUNTY	MAP NO	ROUTE	DESCRIPTION	TYP NO	LENGTH MI	WIDTH FT	MOBILIZATION LS	2" MILLING SY	INCIDENTAL MILLING SY	SURFACE COURSE, S9.5D TONS	PG 76-22 PLANT MIX TONS	PG 70-28 PLANT MIX TONS	PATCHING EXISTING PAVEMENT TONS	ULTRATHIN ASPHALT TYPE B TONS	APPLICATION OF ULTRATHIN SY	STEEL BM GUARDRAIL LF	ADDITIONAL GUARDRAIL POSTS EA	GUARDRAIL ANCHOR UNITS, TYPE 350 EA	PORTABLE LIGHTING LS
I-5007	Gaston	1	I-85	I-85 FROM SOUTHFORK RIVER BRIDGE TO EXIT 27	1	3.1	VAR 36-48 (each direction)	LS	141,867	1,000	16,207	895	295	500	5,583	159,514	500	5	8	LS
<b>TOTAL FOR PROJ NO. I-5007</b>						<b>3.1</b>		<b>LS</b>	<b>141,867</b>	<b>1,000</b>	<b>16,207</b>	<b>895</b>	<b>295</b>	<b>500</b>	<b>5,583</b>	<b>159,514</b>	<b>500</b>	<b>5</b>	<b>8</b>	<b>LS</b>
<b>GRAND TOTAL</b>						<b>3.1</b>		<b>LS</b>	<b>141,867</b>	<b>1,000</b>	<b>16,207</b>	<b>895</b>	<b>295</b>	<b>500</b>	<b>5,583</b>	<b>159,514</b>	<b>500</b>	<b>5</b>	<b>8</b>	<b>LS</b>

## THERMOPLASTIC AND PAINT QUANTITIES

PROJECT NO	COUNTY	MAP NO	ROUTE	DESCRIPTION	4400000000-E	4405000000-E	4415000000-N	4420000000-N	4430000000-N	4480000000-N	4688000000-E	4690000000-E	4700000000-E	4721000000-E	4725000000-E	4810000000-E	4820000000-E	4905000000-N
					STATIONARY WORK ZONE SIGN SF	PORTABLE WORK ZONE SIGN SF	FLASHING ARROW PNL TYPE C EA	CHANGEABLE MESSAGE SIGNS EA	DRUMS EA	TRUCK MTD IMP. ATTN. 60 MPH EA	6" WIDE THERMO 90 MILS LF	6" WIDE THERMO 120 MILS LF	12" X 90 M WHITE THERMO LF	THRM PVT MKG CHAR 120M EA	THERMO PVT SYMBOL 90 MIL EA	4" WHITE PAINT LF	8" WHITE PAINT LF	SNOW PLOWABLE MARKERS EA
I-5007	Gaston	1	I-85	I-85 FROM SOUTHFORK RIVER BRIDGE TO EXIT 27	216	128	2	2	125	1	47,570	20,000	4,450	41	4	202,710	13,350	1,200
<b>TOTAL FOR PROJ NO. I-5007</b>					<b>216</b>	<b>128</b>	<b>2</b>	<b>2</b>	<b>125</b>	<b>1</b>	<b>47,570</b>	<b>20,000</b>	<b>4,450</b>	<b>41</b>	<b>4</b>	<b>202,710</b>	<b>13,350</b>	<b>1,200</b>
<b>GRAND TOTAL</b>					<b>216</b>	<b>128</b>	<b>2</b>	<b>2</b>	<b>125</b>	<b>1</b>	<b>47,570</b>	<b>20,000</b>	<b>4,450</b>	<b>41</b>	<b>4</b>	<b>202,710</b>	<b>13,350</b>	<b>1,200</b>

**ADVANCED WORK ZONE WARNING SIGNING FOR FREEWAYS (4 LANES OR GREATER)**

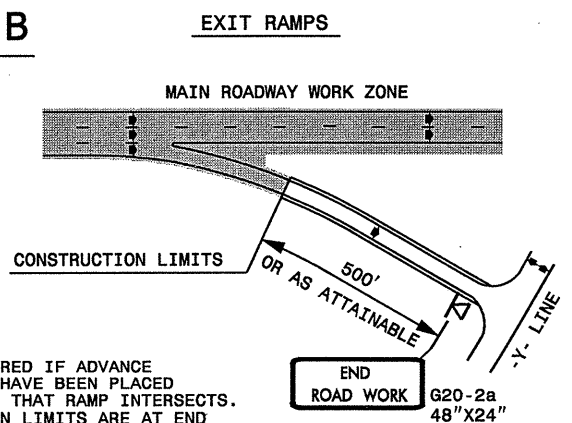
**DETAIL A**



STATE OF NORTH CAROLINA  
DEPT. OF TRANSPORTATION  
DIVISION OF HIGHWAYS  
RALEIGH, N.C.

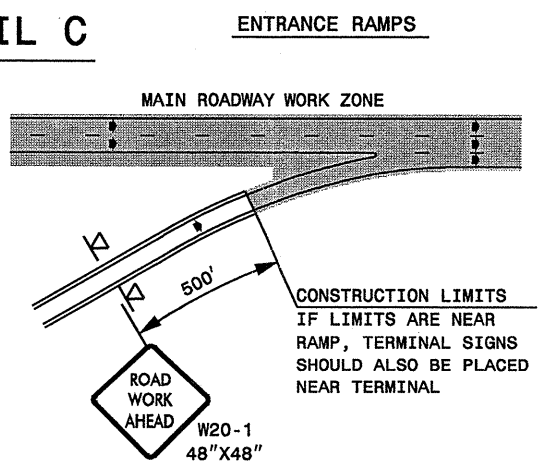
**ROADWAYS INTERSECTING ALONG FREEWAY WORK ZONE (Y-LINES)**

**DETAIL B**

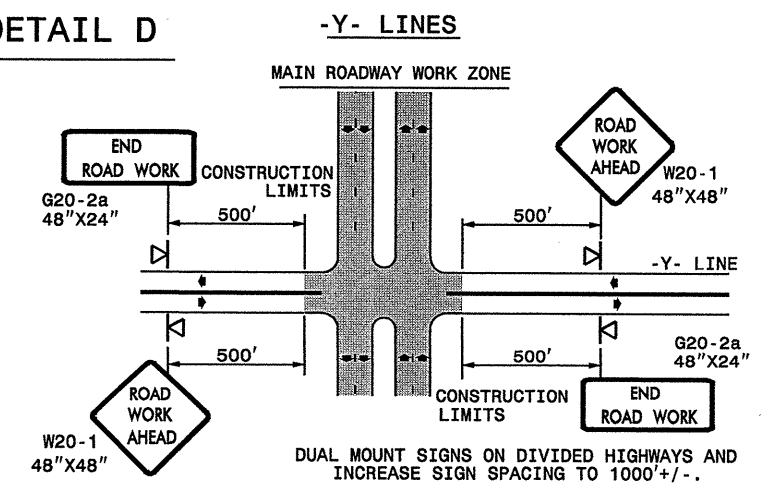


NOTE:  
SIGN NOT REQUIRED IF ADVANCE WARNING SIGNS HAVE BEEN PLACED ALONG -Y- LINE THAT RAMP INTERSECTS. IF CONSTRUCTION LIMITS ARE AT END OF RAMP, PLACE SIGN AT END OF RAMP.

**DETAIL C**



**DETAIL D**



**DETAIL DRAWING  
FOR FREEWAYS  
WORK ZONE WARNING SIGNS  
(SHORT-DURATION LANE CLOSURES)**

**GENERAL NOTES**

- USE FLUORESCENT ORANGE SHEETING (TYPE VII OR HIGHER) ON ALL ADVANCED WORK ZONE SIGNS.
- DO NOT INSTALL ADVANCE WARNING SIGNS MORE THAN 3 DAYS PRIOR TO BEGINNING OF WORK.
- ALL SIGN SPACING DIMENSIONS ARE APPROXIMATE, FIELD ADJUST AS NECESSARY OR AS DIRECTED.
- USE PORTABLE WORK ZONE SIGNS ONLY WITH PORTABLE WORK ZONE SIGN STANDS SPECIFICALLY DESIGNED FOR ONE ANOTHER. PORTABLE WORK ZONE SIGNS MAY BE ROLL UP OR APPROVED COMPOSITE.
- PROVIDE PORTABLE WORK ZONE SIGN STANDS, PORTABLE SIGNS AND SIGN SHEETING WHICH ARE LISTED ON THE NORTH CAROLINA DEPARTMENT OF TRANSPORTATION'S APPROVED PRODUCT LIST OR ACCEPTED AS TRAFFIC QUALIFIED BY THE TRAFFIC CONTROL UNIT.
- \*\* TWO-WAY UNDIVIDED ADVANCE WARNING SIGN CONFIGURATION MAY BE USED ON MULTI-LANE FACILITIES WHERE CONDITIONS LIMIT THE USE OF DUAL MOUNTED SIGNS AS DETERMINED BY THE ENGINEER.

**LEGEND**

◁ PORTABLE SIGN

➔ DIRECTION OF TRAFFIC FLOW

APPROVED: _____	DATE: _____	<b>DETAIL DRAWING FOR FREEWAYS WORK ZONE WARNING SIGNS</b>	
SEAL 	SCALE: NONE	 REVISIONS 7-98 10/01 10-98 03/04 01/01 11/04 CADD FILE	
	DATE: _____		
	DESIGN BY: _____		
	REVIEWED BY: _____		

10-MAY-2007 14:33 \\DOT\DFSROOT\GROUPS-WZTCCC\design\group4\resurfacing\resurfacing2006\d1v2\414713gv1fr\_ee4lanesgreat\july2006.dgn psymore AT WZTCCC206427

**SP 03353**

SIGN NUMBER: SP-03353 TYPE: A QUANTITY: 1 SIGN WIDTH: 4'-0" HEIGHT: 4'-0" TOTAL AREA: 16.0 Sq.Ft. BORDER TYPE: FLUSH RECESS: 0.39" WIDTH: 0.75" RADIUS: 1.38" NO. Z BARS: N/A LENGTH: N/A	BACKG COLOR: Fluorescent Orange COPY COLOR: Black	DESIGN BY: CL DOWNEY PROJECT ID: ALL PROJECTS	CHECKED BY: CHECKED DIV: DIV STD #: W20-1 DATE: Aug 20, 2003
--	--	--	---

SYMBOL	X	Y	WID	HT

BORDER  
R=1.38"  
TH=0.75"  
IN=0.59"

LETTER POSITIONS

Letter spacings are to start of next letter

Letter	Series/Size	Text Length
B	C7	22.4
E	C7	5.3
G	C7	4.6
I	C7	2.5
N	C7	3.8
R	C7	22.4
W	C7	22.6
O	C7	5.6
R	C7	4
K	C7	22.6

Spacing Factor is 1 unless specified otherwise

FILENAME: SPECI04X

**GENERAL NOTES FOR SIGN SP-03353 "BEGIN ROAD WORK"**

- SIGN SP-03353 "BEGIN ROAD WORK" ONLY APPLIES TO FULL CONTROL AND PARTIAL CONTROL OF ACCESS ROADWAYS
- WHEN USED, INSTALL SIGN SP-03353 "BEGIN ROAD WORK" ACCORDING TO DETAIL FOR FREEWAY WORK ZONE SIGNS

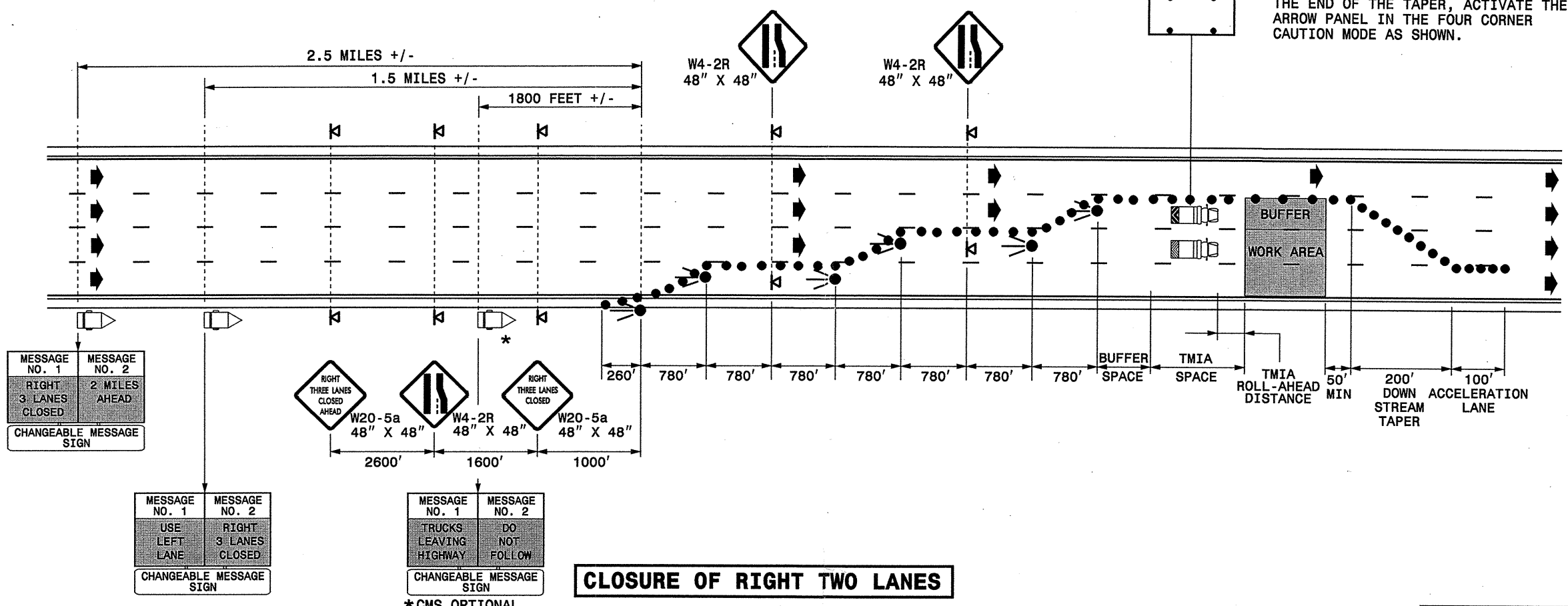
STATE OF NORTH CAROLINA  
 DEPT. OF TRANSPORTATION  
 DIVISION OF HIGHWAYS  
 RALEIGH, N.C.

DETAIL DRAWING FOR  
 WORK ZONE SIGNS  
 BEGIN ROAD WORK

APPROVED: _____	DATE: _____	DETAIL DRAWING FOR ADVANCED WORK ZONE WARNING SIGN DESIGNS	
SEAL 	SCALE: NONE		REVISIONS
	DATE: 08/03		04/04
	DWG. BY:		11/04
	DESIGN BY:		
REVIEWED BY:		CADD FILE	

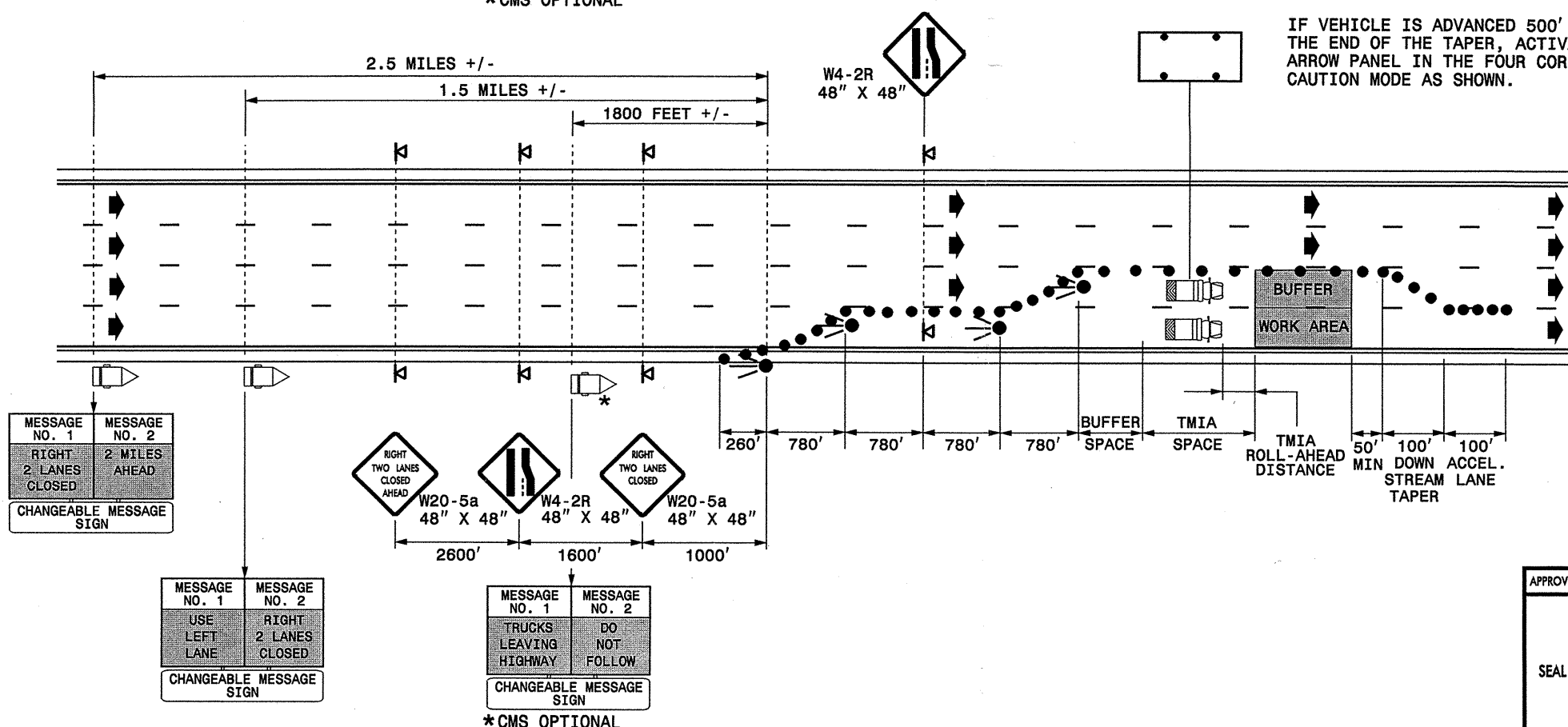
IO-MAY-2007 14:34  
 \DOT\DFSROOT\GROUPS-WZTCCC\design\group4\resur-facing\resur-facing2006\div2\414713GV1\SignDesigns\July2006.dgn  
 psymore AT WZTCCC

### CLOSURE OF RIGHT THREE LANES



IF VEHICLE IS ADVANCED 500' FROM THE END OF THE TAPER, ACTIVATE THE ARROW PANEL IN THE FOUR CORNER CAUTION MODE AS SHOWN.

### CLOSURE OF RIGHT TWO LANES



IF VEHICLE IS ADVANCED 500' FROM THE END OF THE TAPER, ACTIVATE THE ARROW PANEL IN THE FOUR CORNER CAUTION MODE AS SHOWN.

- #### GENERAL NOTES
- 1-Refer to Notes on Rdwy Std 1101.02 Sheet 3 of 9.
  - 2-Coordinate use of overhead DMSS with the Division.
  - 3-Use following configuration for FAP (Flashing Arrow Panel)
  - 4-Symbols shown are for Right Lane Closure, use appropriate signs, messages and arrows for Left Lane Closure. Portable CMSs to remain positioned as shown.

- #### LEGEND
- FLASHING ARROW PANEL (TYPE C) (FAP)
  - TRUCK MOUNTED IMPACT ATTENUATOR (TMIA)
  - DRUM
  - PORTABLE SIGN
  - CHANGEABLE MESSAGE SIGN (CMS)
  - DIRECTION OF TRAFFIC FLOW

APPROVED: \_\_\_\_\_ DATE: \_\_\_\_\_

SEAL

### INTERSTATE DUAL/TRIPLE LANE CLOSURE

SCALE: NONE		REVISIONS
DATE: 03-09-06		
DWG. BY: PS		
DESIGN BY: JPG		
REVIEWED BY: SK		

I:\MAY-2007\10:37\DOT\DFSR0010\GROUPS-WZTCCC\designgroup4\resurfacing\resurfacing2006\dlv2\414713gv1\_14713doublefaps040406.dgn  
 pseymore AT WZTCCC