

STATE	STATE PROJECT REFERENCE NO.	SHEET NO.	TOTAL SHEETS
N.C.	B-3126	EC-1	
STATE PROJ. NO.	F.A. PROJ. NO.	DESCRIPTION	

**EROSION AND SEDIMENT CONTROL MEASURES**

Std. #	Description	Symbol
	Streambank Reforestation.....	
1630.03	Temporary Silt Ditch.....	
1630.05	Temporary Diversion.....	
1605.01	Temporary Silt Fence.....	
1606.01	Special Sediment Control Fence.....	
1622.01	Temporary Berms and Slope Drains.....	
1630.01	Riser Basin.....	
1630.02	Silt Basin Type B.....	
1633.01	Temporary Rock Silt Check Type-A.....	
	Temporary Rock Silt Check Type-B.....	
1634.01	Temporary Rock Sediment Dam Type-A.....	
1634.02	Temporary Rock Sediment Dam Type-B.....	
1635.01	Rock Pipe Inlet Sediment Trap Type-A.....	
1635.02	Rock Pipe Inlet Sediment Trap Type-B.....	
1630.04	Stilling Basin.....	
	Rock Inlet Sediment Trap:	
	Type A.....	
1632.01	Type B.....	
1632.02	Type C.....	
	Skimmer Basin.....	
	Tiered Skimmer Basin.....	

**THIS PROJECT CONTAINS EROSION CONTROL PLANS FOR CLEARING AND GRUBBING PHASE OF CONSTRUCTION.**

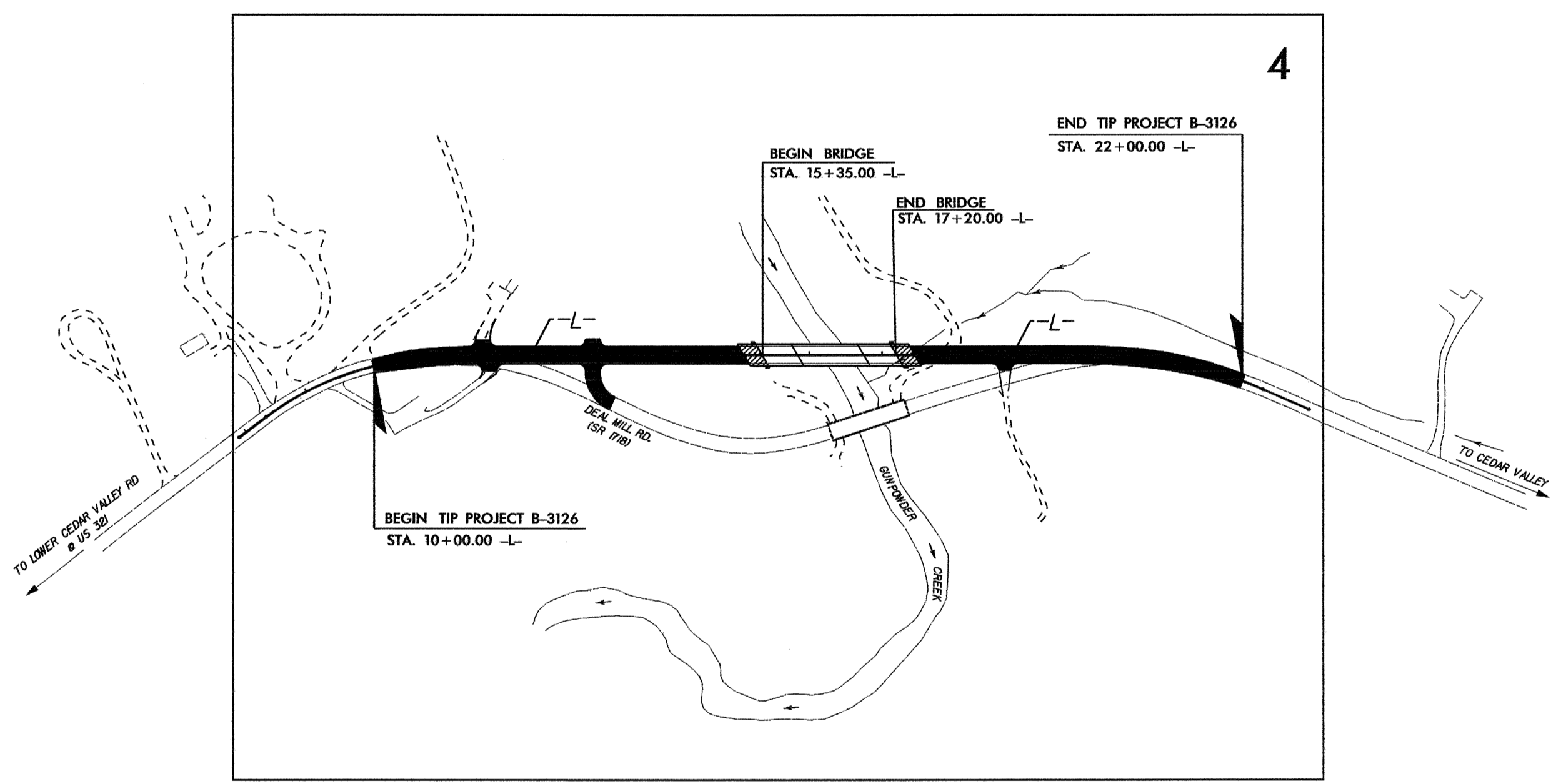
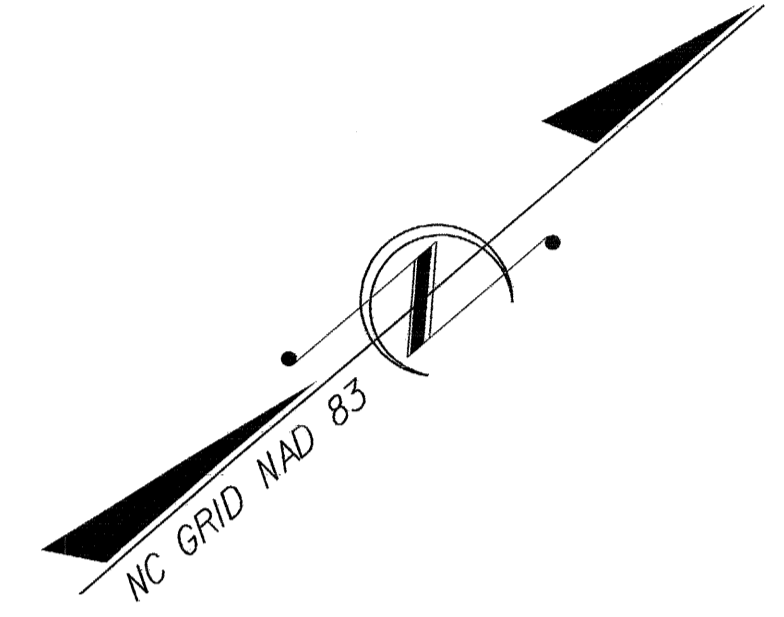
**ENVIRONMENTALLY SENSITIVE AREA(S) EXIST ON THIS PROJECT**

*Refer To E. C. Special Provisions for Special Considerations.*

**TIP PROJECT: B-3126**

STATE OF NORTH CAROLINA  
 DIVISION OF HIGHWAYS  
 PLAN FOR PROPOSED  
 HIGHWAY EROSION CONTROL  
**CALDWELL COUNTY**

**LOCATION: BRIDGE #90 OVER GUNPOWDER CREEK ON SR 1718**  
**TYPE OF WORK: GRADING, PAVING, DRAINAGE, AND STRUCTURE**



**GRAPHIC SCALE**

0

PLANS

0

PROFILE (HORIZONTAL)

0

PROFILE (VERTICAL)

ROADSIDE ENVIRONMENTAL UNIT  
 DIVISION OF HIGHWAYS  
 STATE OF NORTH CAROLINA

Prepared in the Office of:  
**ROADSIDE ENVIRONMENTAL UNIT**  
 1 South Wilmington St.  
 Raleigh, NC 27611

**2006 STANDARD SPECIFICATIONS**

Roadway Standard Drawings

The following roadway english standards as appear in "Roadway Standard Drawings"- Roadway Design Unit - N. C. Department of Transportation - Raleigh, N. C., dated July 18, 2006 and the latest revision thereto are applicable to this project and by reference hereby are considered a part of these plans.

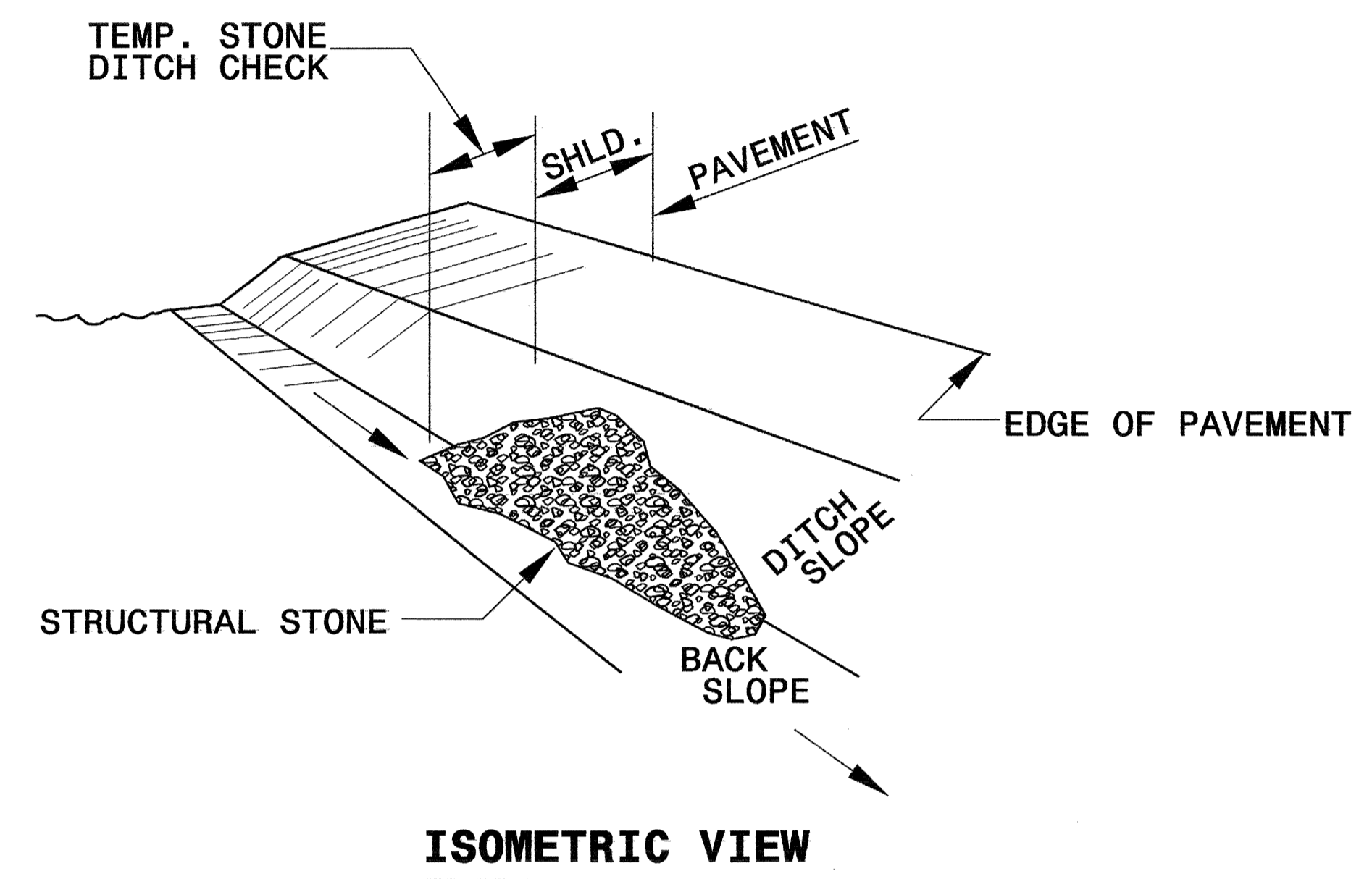
1605.01 Temporary Silt Fence	1632.03 Rock Inlet Sediment Trap Type C
1607.01 Gravel Construction Entrance	1633.01 Temporary Rock Silt Check Type A
1622.01 Temporary Berms and Slope Drains	1634.02 Temporary Rock Sediment Dam Type B
1630.05 Temporary Diversion	1635.02 Rock Pipe Inlet Sediment Trap Type B
1630.06 Special Stilling Basin	

Prepared in the Office of:  
**ROADSIDE ENVIRONMENTAL UNIT**  
 1 South Wilmington St.  
 Raleigh, NC 27611

**2006 STANDARD SPECIFICATIONS**

PROJECT REFERENCE NO. <i>B-3126</i>	SHEET NO. <i>EC-2</i>
RW SHEET NO.	
ROADWAY DESIGN ENGINEER	HYDRAULICS ENGINEER

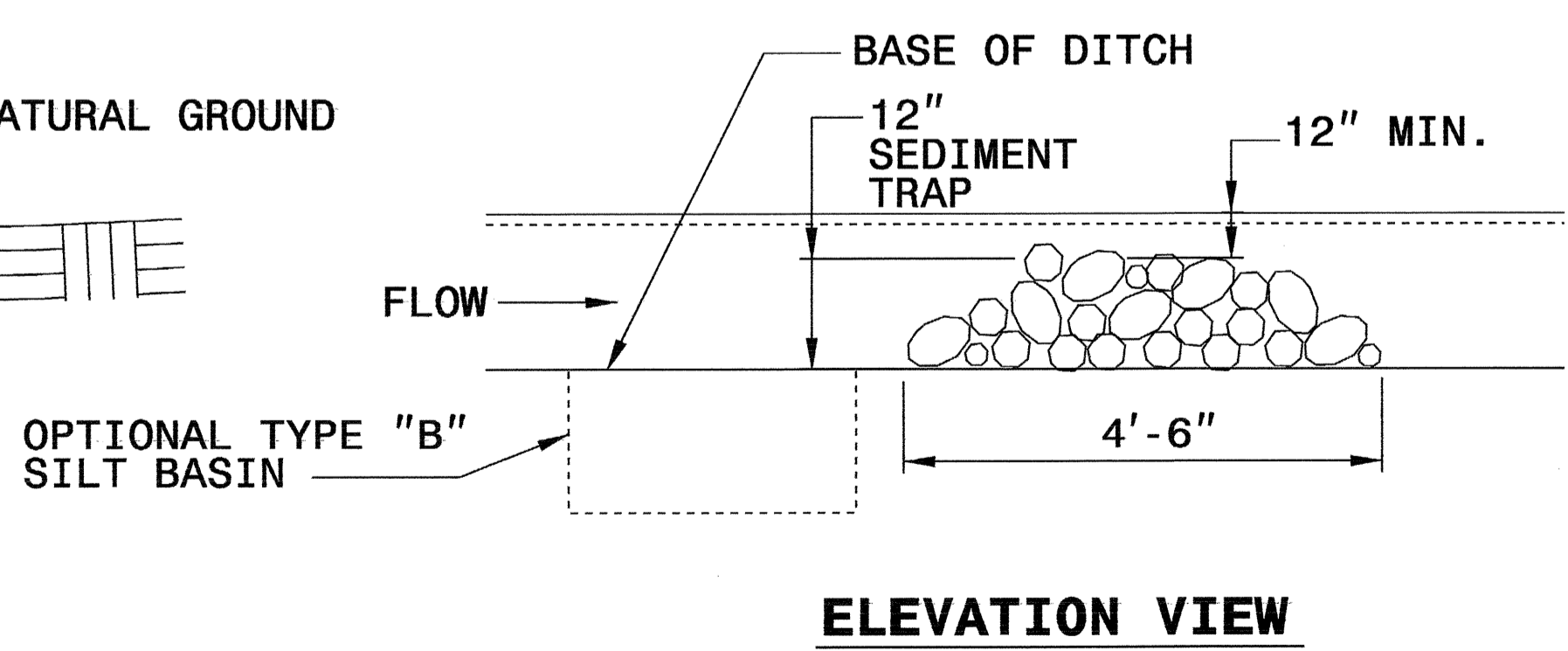
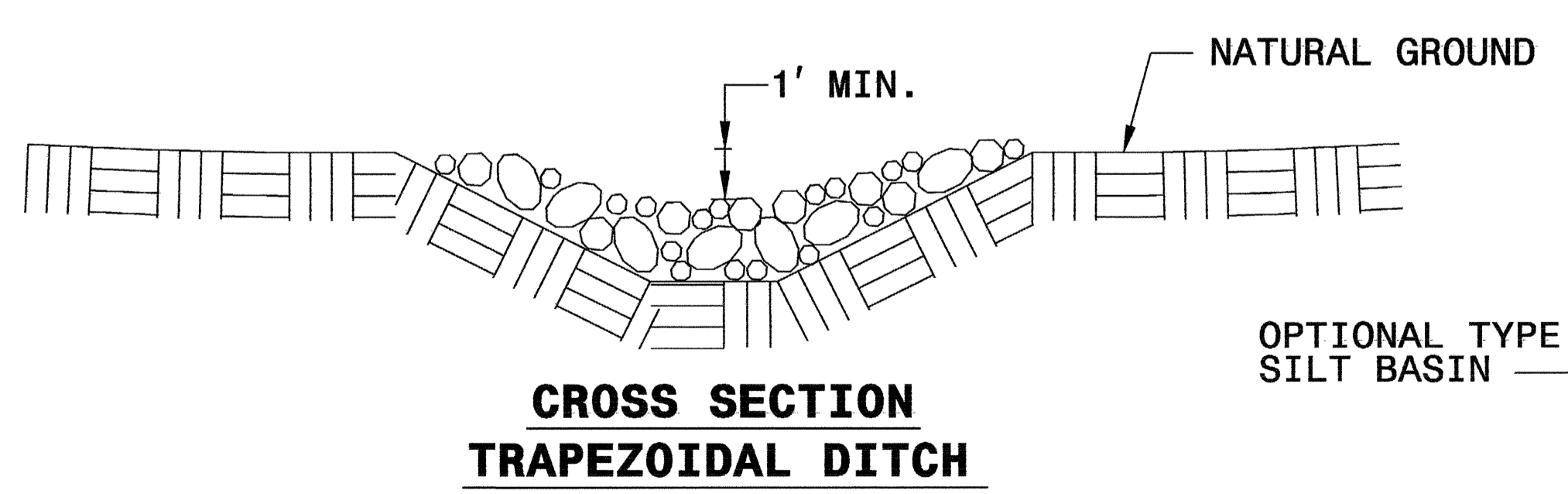
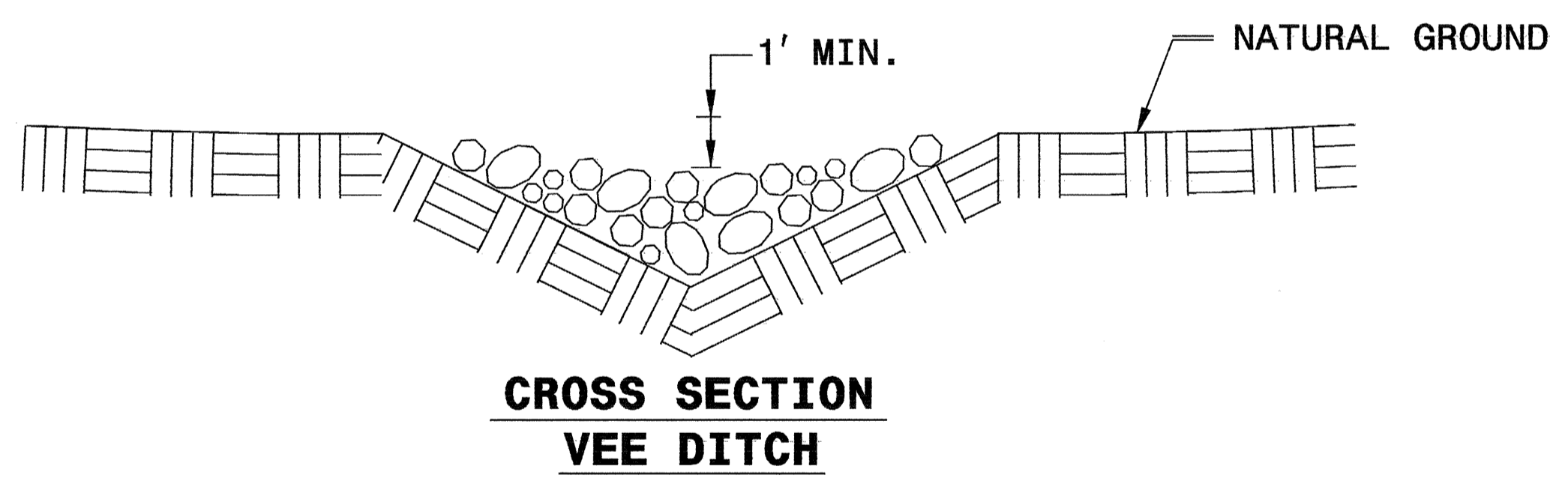
# TEMPORARY ROCK SILT CHECK TYPE 'B' DETAIL



**NOTES:**

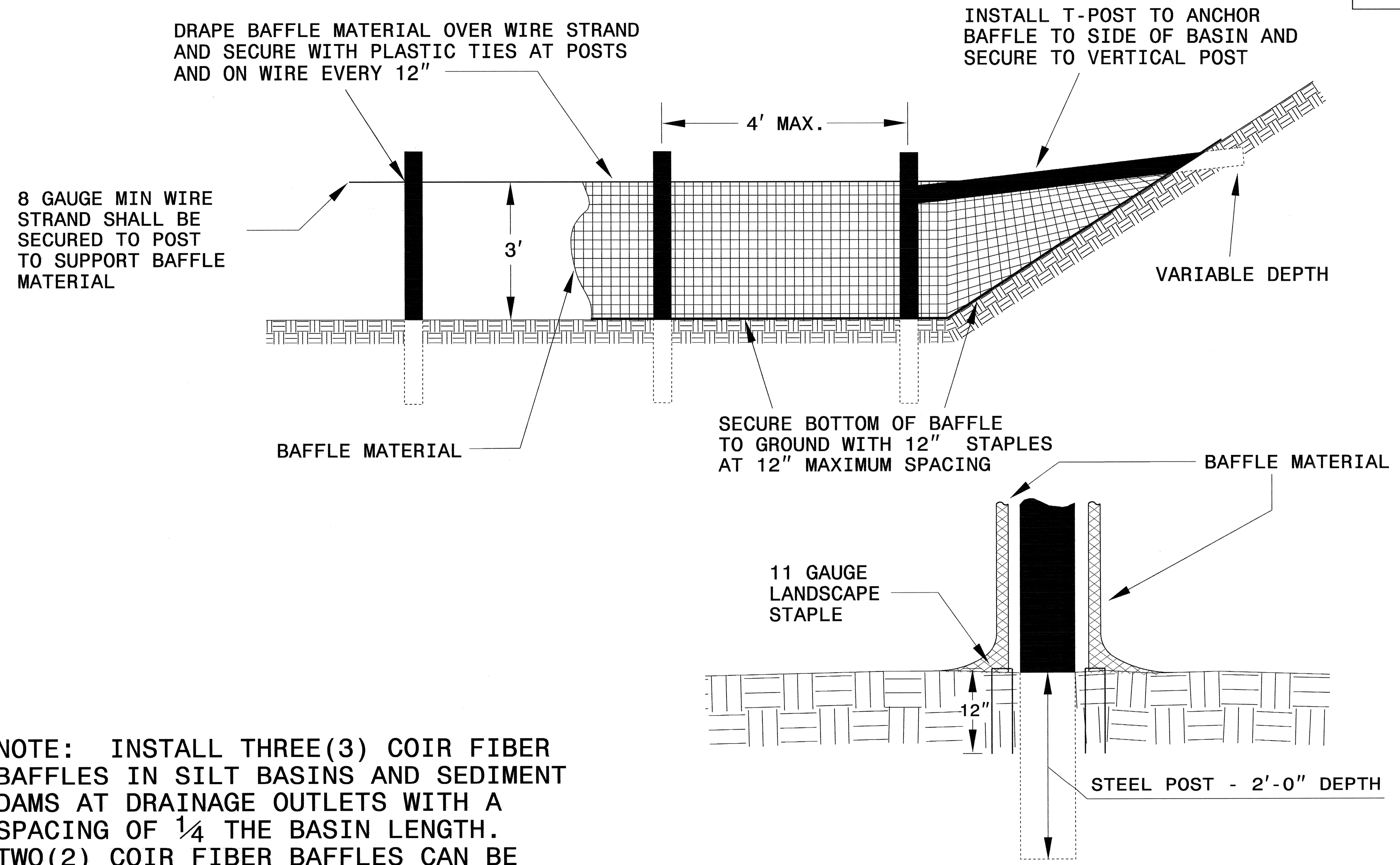
USE CLASS 'B' EROSION CONTROL STONE FOR STRUCTURAL STONE.

THE ENGINEER MAY DIRECT THE OPTION OF CLASS "A" STONE FOR SITES HAVING LESS THAN ONE (1) ACRE DRAINAGE AREA AND A DITCH GRADE LESS THAN 3%.



PROJECT REFERENCE NO. <i>B-3126</i>	SHEET NO. <i>EC-2A</i>
RW SHEET NO.	
ROADWAY DESIGN ENGINEER	HYDRAULICS ENGINEER

# COIR FIBER BAFFLE DETAIL

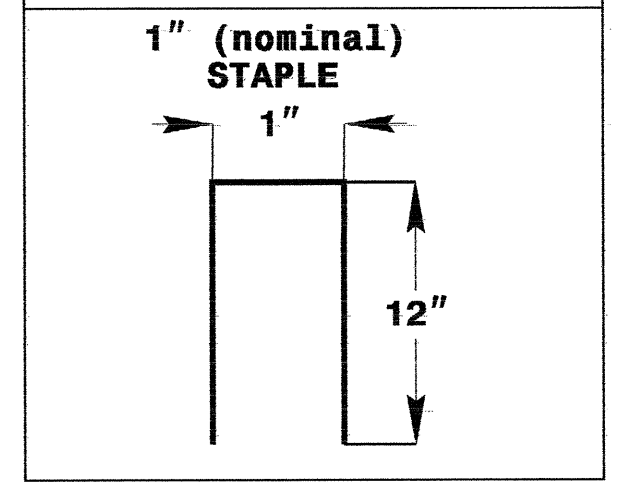
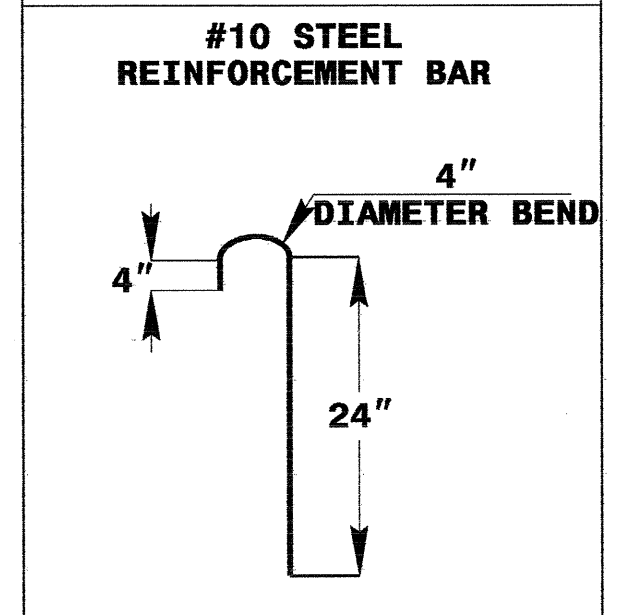
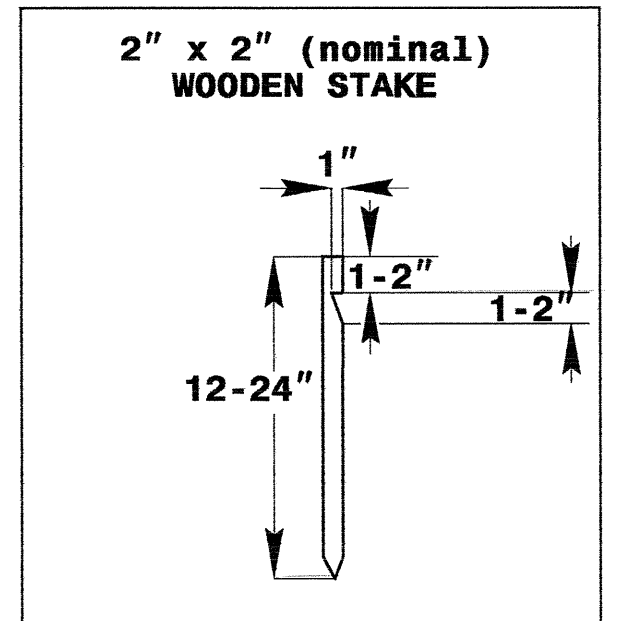
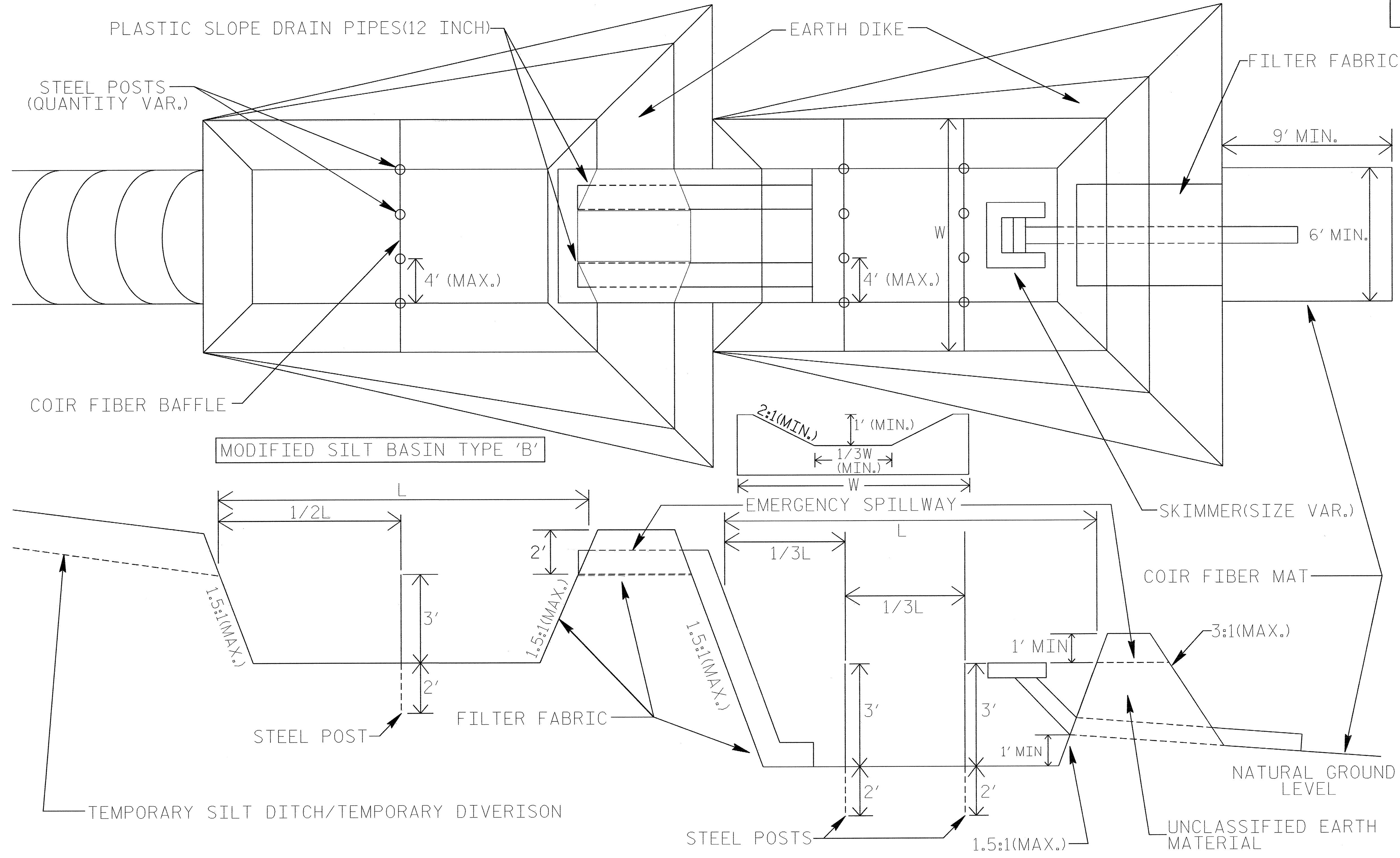


NOTE: INSTALL THREE(3) COIR FIBER BAFFLES IN SILT BASINS AND SEDIMENT DAMS AT DRAINAGE OUTLETS WITH A SPACING OF  $\frac{1}{4}$  THE BASIN LENGTH. TWO(2) COIR FIBER BAFFLES CAN BE INSTALLED IN SILT BASINS AND DAMS LESS THAN 20 FT. IN LENGTH WITH A SPACING OF  $\frac{1}{3}$  THE BASIN LENGTH.

BAFFLE MATERIAL SHALL BE SECURED TO THE BOTTOM AND SIDES OF BASIN USING 12" LANDSCAPE STAPLES

# TIERED SKIMMER BASIN DETAIL

PROJECT REFERENCE NO. B-3126	SHEET NO. EC-2B
RW SHEET NO.	
ROADWAY DESIGN ENGINEER	HYDRAULICS ENGINEER



**COIR FIBER MAT ANCHOR OPTIONS**

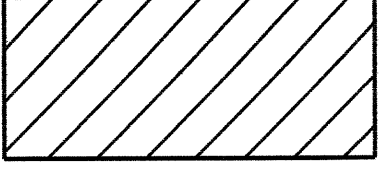
NOTE  
ADDITIONAL MODIFIED SILT BASINS TYPE 'B' MAY BE NEEDED DEPENDING ON SLOPE.



CLEARING AND GRUBBING  
EROSION CONTROL FOR  
CONSTRUCTION SHEET 4

NOTE:  
PLACE TEMPORARY ROCK SEDIMENT DAMS TYPE - B  
AND TEMPORARY ROCK SILT CHECKS TYPE - A AT  
DRAINAGE OUTLETS.

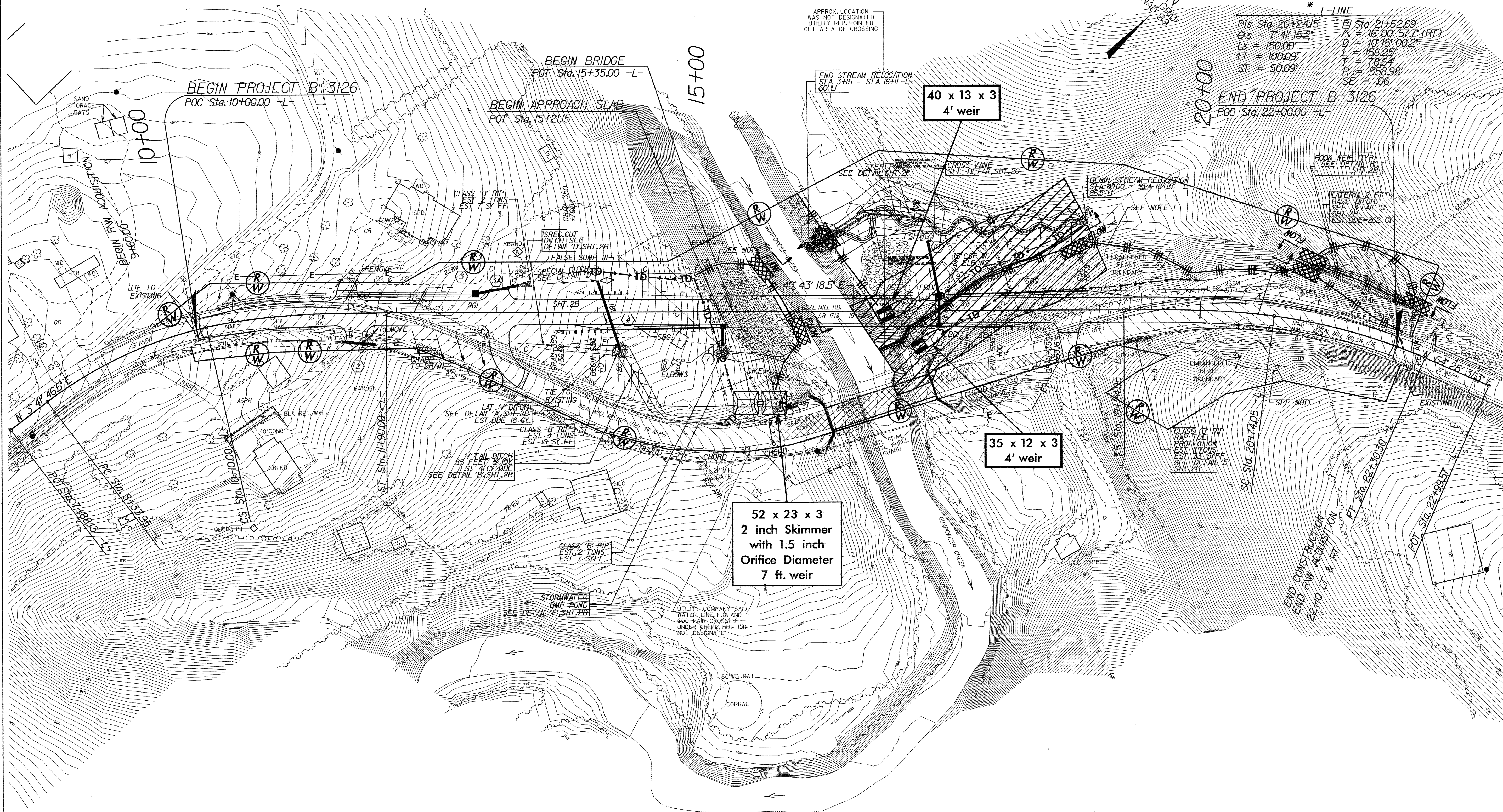
NOTE: UTILIZE TEMPORARY ROCK SEDIMENT DAM TYPE - B  
OR SPECIAL STILLING BASIN AS STILLING BASIN  
WHERE APPLICABLE.

 ENVIRONMENTALLY SENSITIVE AREA  
SEE PROJECT SPECIAL PROVISIONS

MATting SHALL BE INSTALLED ON  
FILL SLOPES ADJACENT TO STREAM  
RELOCATION SITES (EST 2100 SY)

THREATENED AND ENDANGERED SPECIES  
EXIST ON PROJECT. SEE PROJECT SPECIAL  
PROVISIONS

25 0 50 CONST. REV. R/W REV.	PROJECT REFERENCE NO. <b>B-3126</b>	SHEET NO. EC-04/CONST.04
	ROADWAY DESIGN ENGINEER	HYDRAULICS ENGINEER

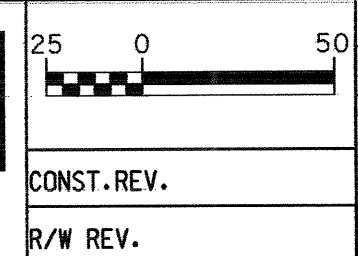


NOTE 1: -L- STA.14+52.24 TO -L- STA.15+45.22 AND  
-L- STA.18+80.35 TO -L- STA.19+78.77. CONSTRUCTION  
LIMITS IN AREAS WHERE ENDANGERED PLANTS ARE  
LOCATED WILL BE LIMITED TO 5' OUTSIDE THE SLOPE STAKES.

REFERENCES:  
1. FOR -L-LINE PROFILE, SEE SHEET 5  
FOR PROP. GRADING DETAIL, SEE SHEET 2B  
2. FOR DITCH DETAILS, SEE SHEET 2B

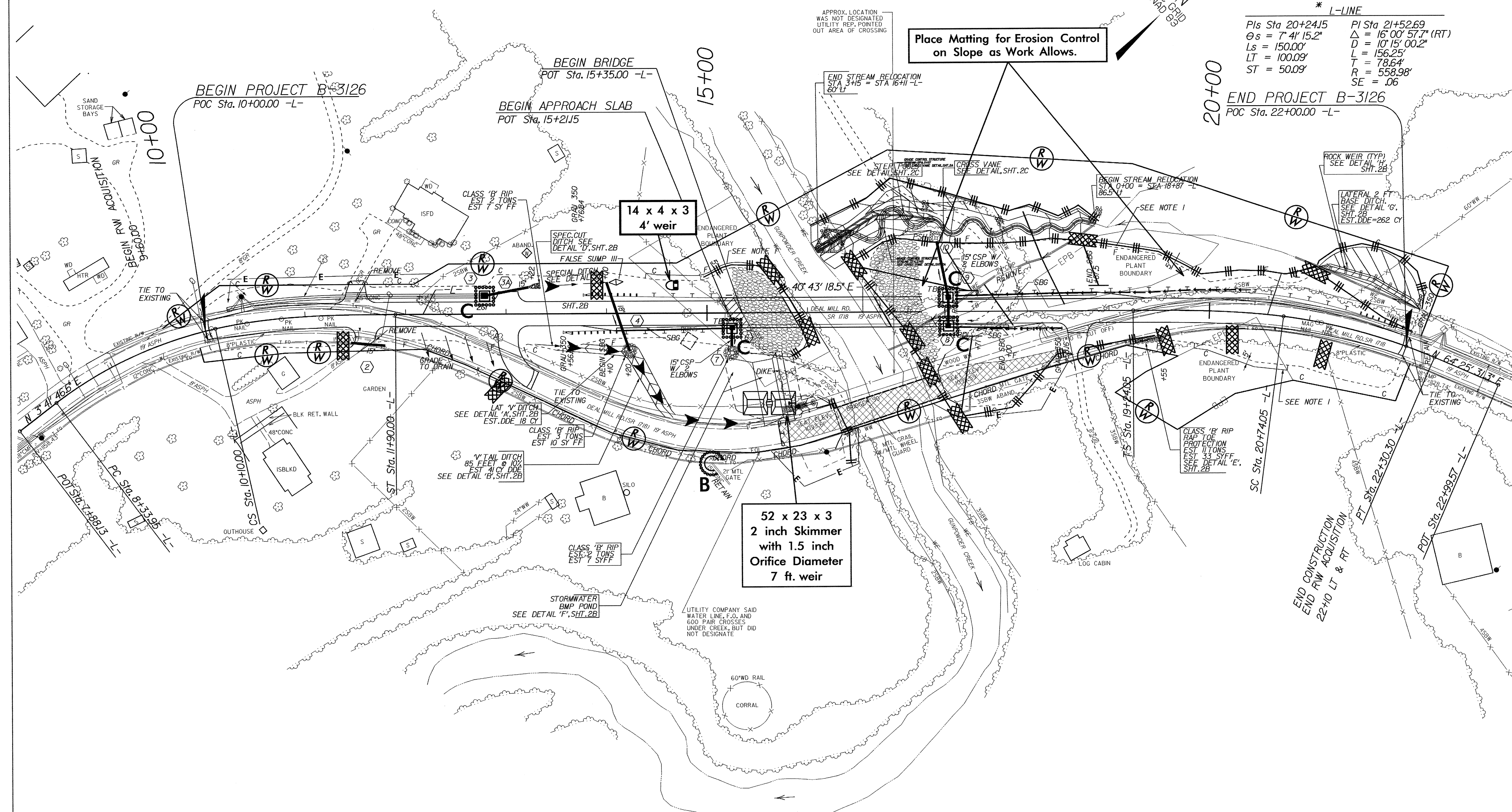
MATTING SHALL BE INSTALLED ON FILL SLOPES ADJACENT TO STREAM RELOCATION SITES (EST 2100 SY)

THREATENED AND ENDANGERED SPECIES EXIST ON PROJECT. SEE PROJECT SPECIAL PROVISIONS



PROJECT REFERENCE NO.		SHEET NO.	
B-3126		EC-05/CONST.04	
ROADWAY DESIGN ENGINEER		HYDRAULICS ENGINEER	
CONST. REV.		R/W REV.	

NOTE: UTILIZE TEMPORARY ROCK SEDIMENT DAM TYPE - B OR SPECIAL STILLING BASIN AS STILLING BASIN WHERE APPLICABLE.



Place Matting for Erosion Control on Slope as Work Allows.

14 x 4 x 3  
4' weir

52 x 23 x 3  
2 inch Skimmer  
with 1.5 inch  
Orifice Diameter  
7 ft. weir

\* L-LINE  
 Pls Sta 20+24.15 PI Sta 21+52.69  
 $\theta_s = 7^\circ 41' 15.2''$   $\Delta = 16' 00' 57.7''$  (RT)  
 $L_s = 150.00'$   $D = 10' 15' 00.2''$   
 $L_T = 100.09'$   $L = 156.25'$   
 $ST = 50.09'$   $T = 78.64'$   
 $R = 558.98'$   
 $SE = .06$

NOTE 1: -L- STA.14+52.24 TO -L- STA.15+45.22 AND  
 -L- STA.18+80.35 TO -L- STA.19+78.77. CONSTRUCTION  
 LIMITS IN AREAS WHERE ENDANGERED PLANTS ARE  
 LOCATED WILL BE LIMITED TO 5' OUTSIDE THE SLOPE STAKES.

REFERENCES:  
 1. FOR -L-LINE PROFILE, SEE SHEET 5  
 FOR PROP. GRADING DETAIL, SEE SHEET 2B  
 2. FOR DITCH DETAILS, SEE SHEET 2B

PROJECT REFERENCE NO.	SHEET NO.
B-3126	EC-06/CONST.04
RW SHEET NO.	
ROADWAY DESIGN ENGINEER	HYDRAULICS ENGINEER

**0.40 ACRE STREAMBANK REFORESTATION**  
**SEE RF-2, RF-3 AND PROJECT SPECIAL PROVISIONS**

