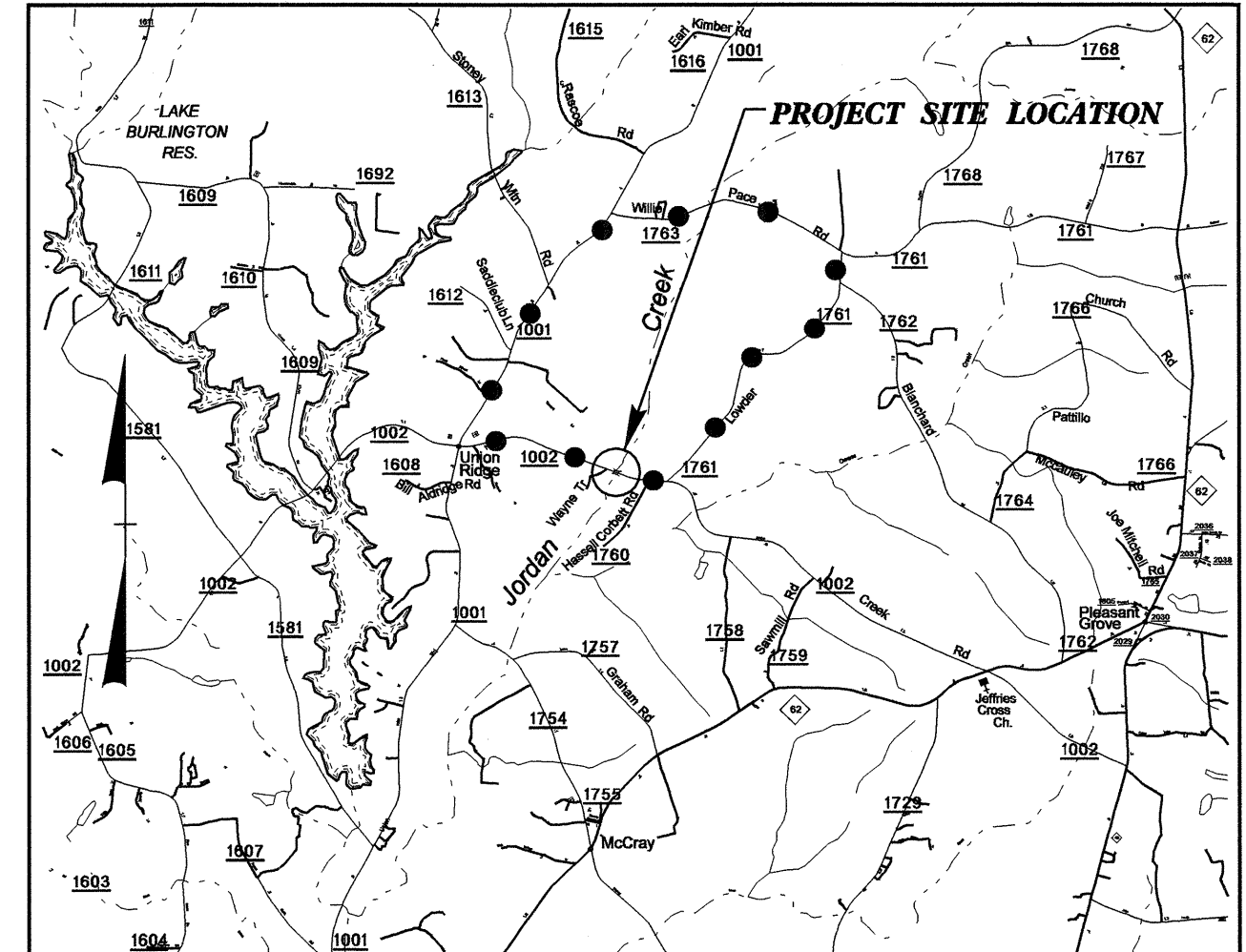


TIP PROJECT: B-4000



VICINITY MAP
DETOUR ROUTE ●-●-●-●-●

THIS PROJECT IS NOT WITHIN ANY MUNICIPAL BOUNDARIES.

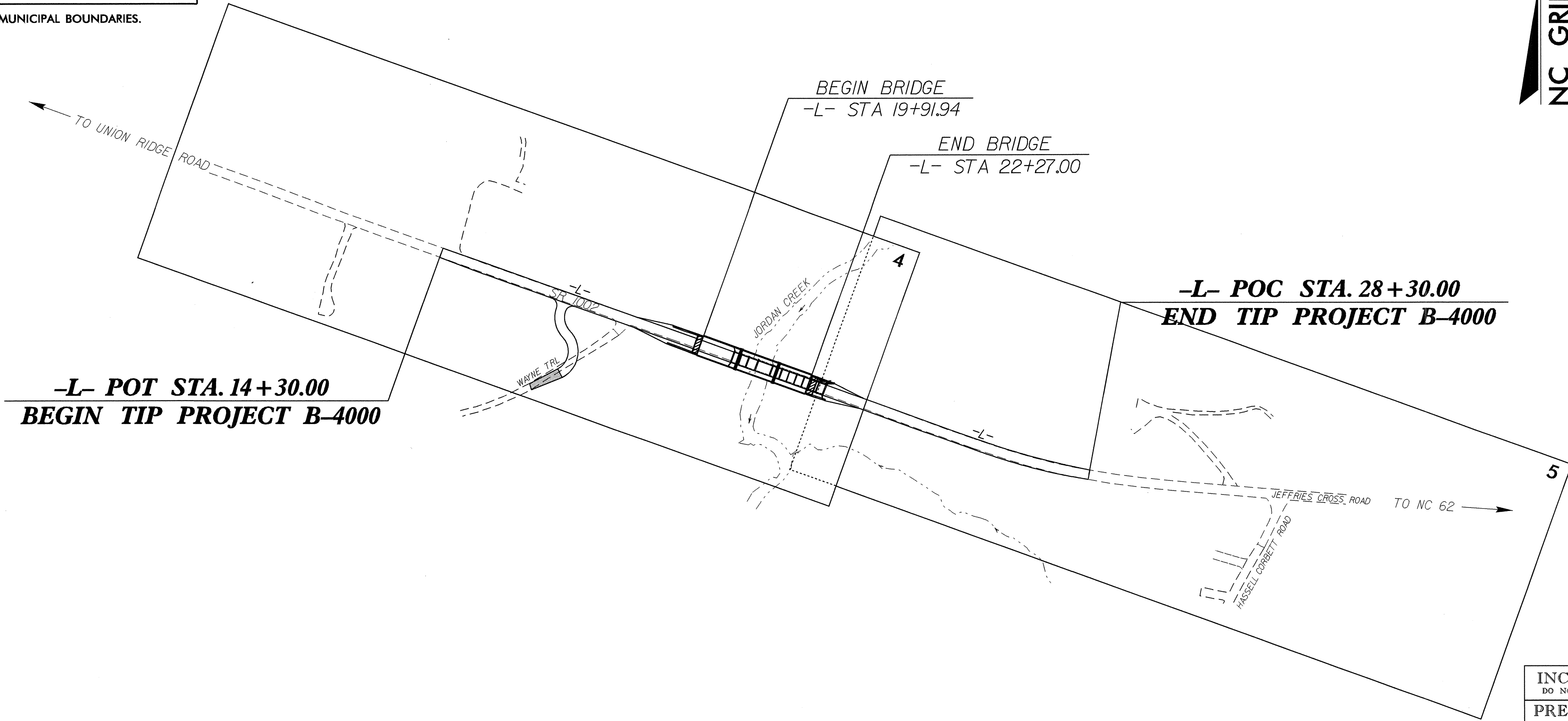
STATE OF NORTH CAROLINA
DIVISION OF HIGHWAYS

UTILITY BY OTHERS PLANS
ALAMANCE COUNTY

LOCATION: BRIDGE NO. 45 OVER JORDAN CREEK
ON SR 1002 (JEFFRIES CROSS ROAD)

TYPE OF WORK: UTILITIES

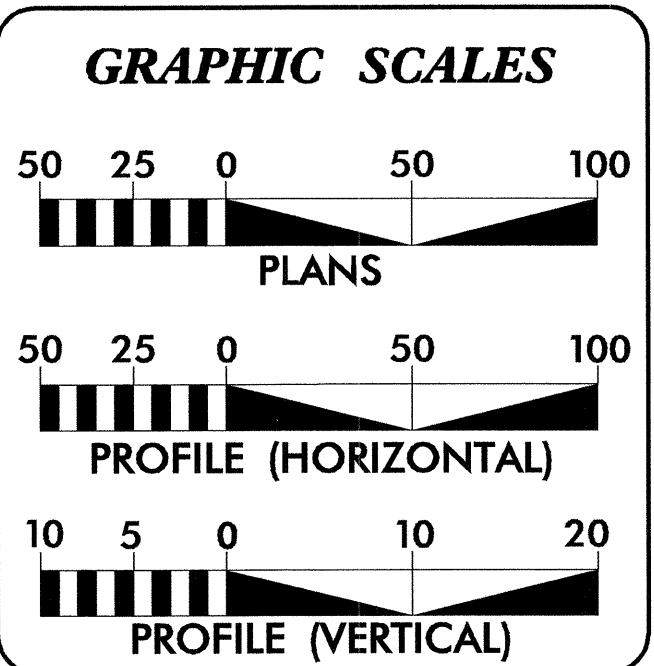
NC GRID
NAD 83



INCOMPLETE PLANS
DO NOT USE FOR R/W ACQUISITION

PRELIMINARY PLANS
DO NOT USE FOR CONSTRUCTION

2006 STANDARD SPECIFICATIONS

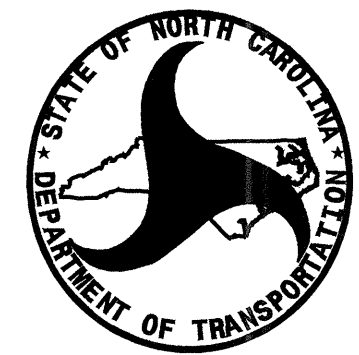


INDEX OF SHEETS

SHEET NO.	DESCRIPTION
UO-1	TITLE SHEET
UO-2	UTILITY BY OTHERS PLAN SHEETS
UO-3	UTILITY BY OTHERS PLAN SHEETS

UTILITY OWNERS ON PROJECT

(1) Duke Power
(2) BellSouth



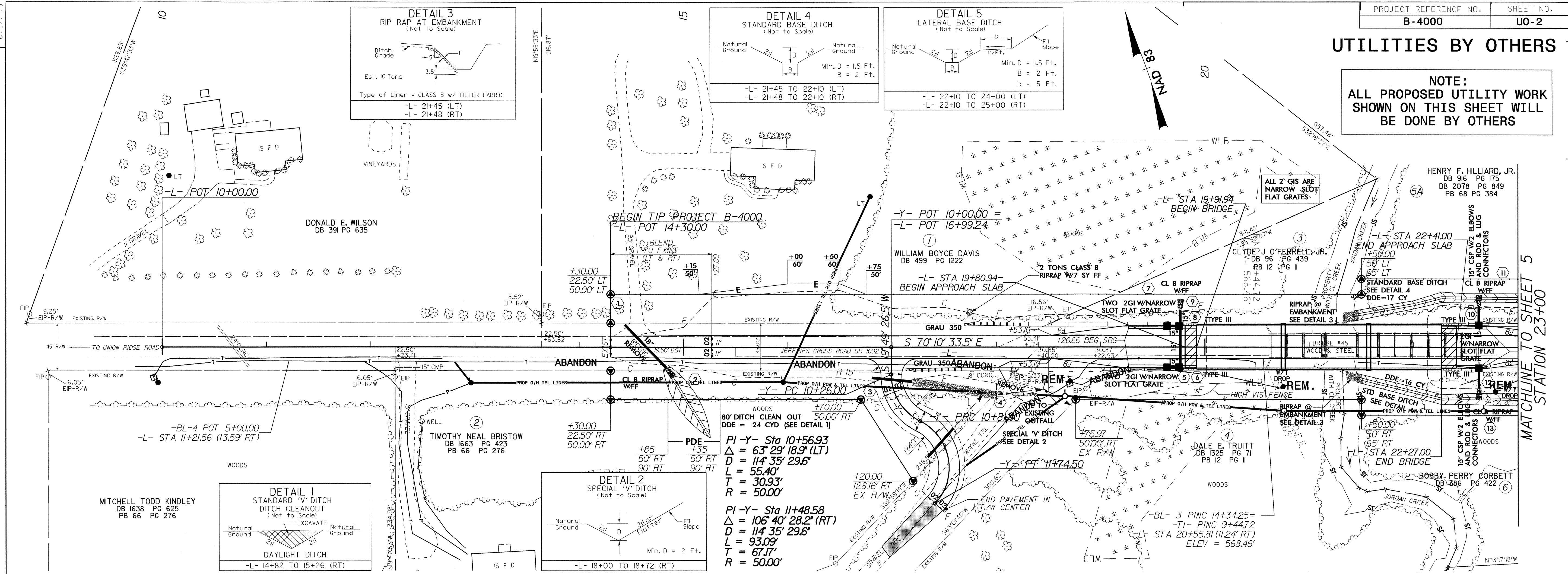
PREPARED IN THE OFFICE OF:
DIVISION OF HIGHWAYS
DESIGN SERVICES
UTILITY SECTION

1591 MAIL SERVICES CENTER
RALEIGH NC 27699-1591
PHONE (919) 250-4128
FAX (919) 250-4119

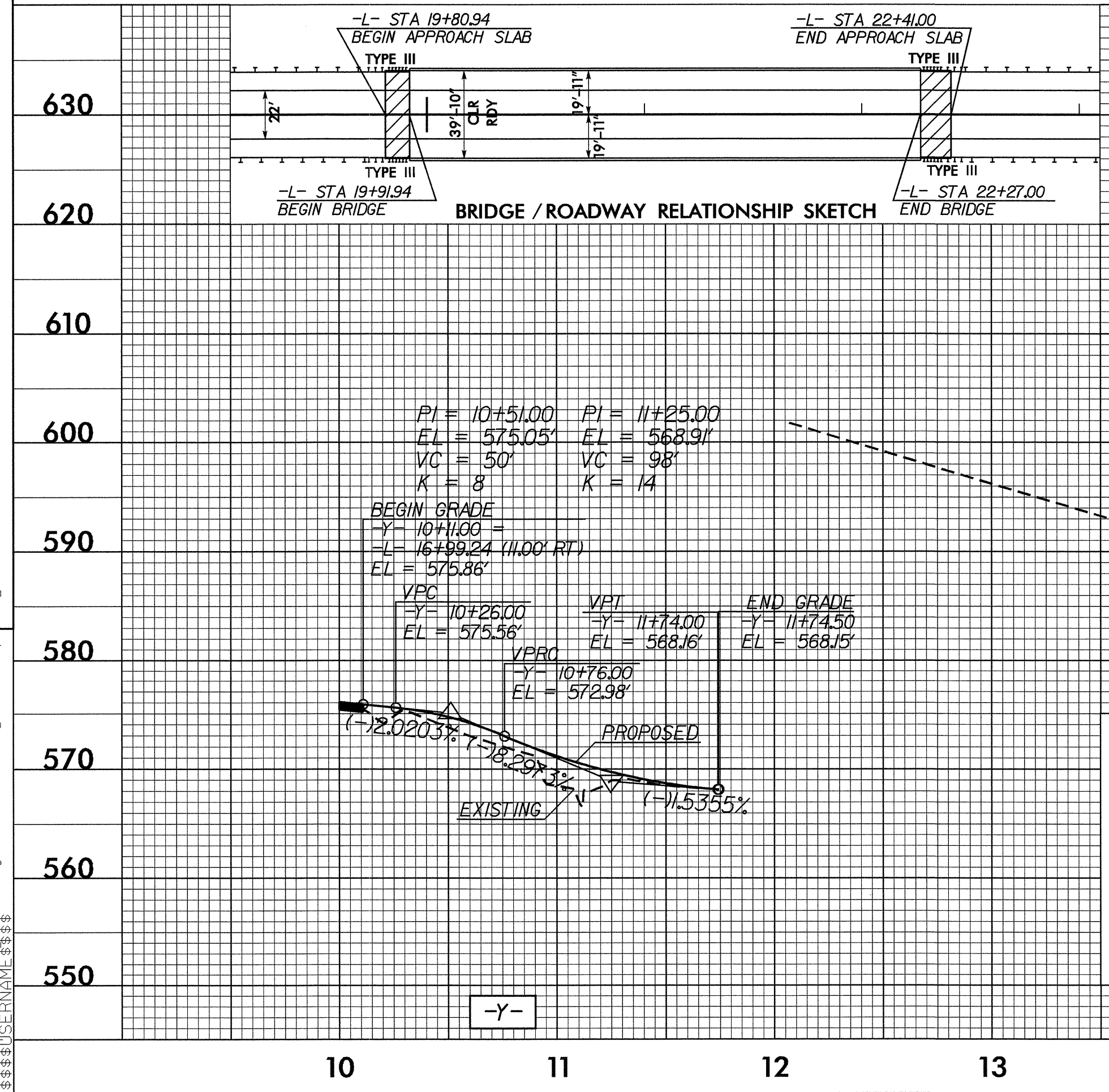
Roger Worthington, P.E. UTILITIES SECTION ENGINEER
Corey Bousquet, P.E. UTILITIES SQUAD LEADER PROJECT ENGINEER
Nabil Hamdan UTILITIES PROJECT DESIGNER

UTILITIES BY OTHERS

NOTE:
ALL PROPOSED UTILITY WORK
SHOWN ON THIS SHEET WILL
BE DONE BY OTHERS

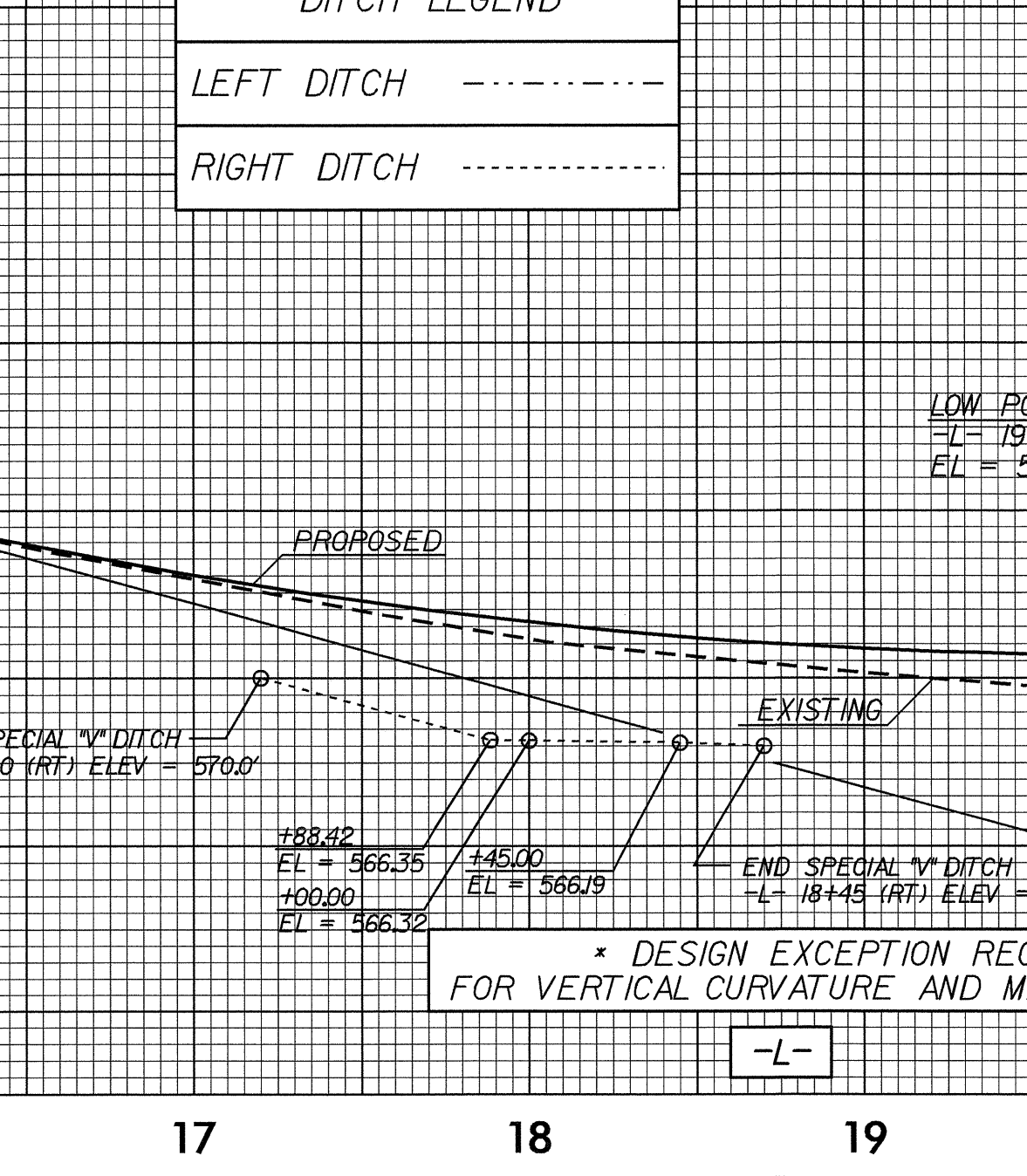
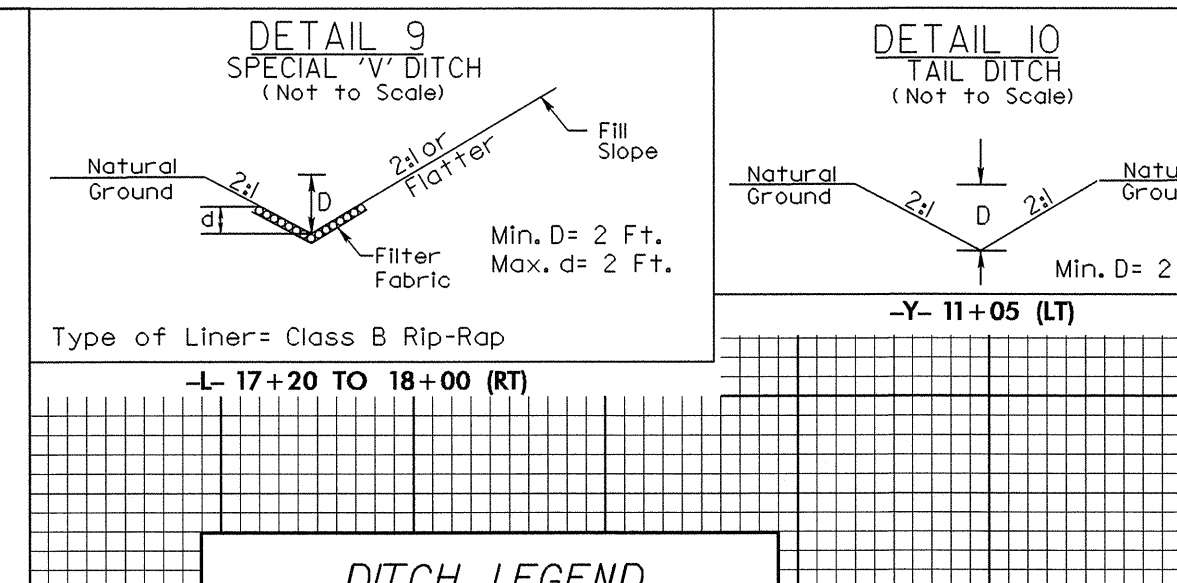


R/W REVISION: ADDED PARCEL 5A; MODIFIED PARCEL 5. 9/11/06 RBE



DATUM DESCRIPTION
THE LOCALIZED COORDINATE SYSTEM DEVELOPED FOR THIS PROJECT IS BASED ON THE STATE PLANE COORDINATES ESTABLISHED BY MCDOT FOR MONUMENT "84000-1" WITH NAD 1983/95 STATE PLANE GRID COORDINATES OF NORTHING: 893565.927(11) EASTING: 1887627.646(11) THE AVERAGE COMBINED GRID FACTOR USED ON THIS PROJECT (GROUND TO GRID) IS: 0.99998579 THE N.C. LAMBERT GRID BEARING AND LOCALIZED HORIZONTAL GROUND DISTANCE FROM "84000-1" TO L- STATION 14+30.00 IS N 70° 45' 13.11" W 1494.9778 FT ALL LINEAR DIMENSIONS ARE LOCALIZED HORIZONTAL DISTANCES VERTICAL DATUM USED IS NAVD 88

PIPE HYDRAULIC DATA
DRAINAGE STRUCTURE NO. 1
DRAINAGE AREA = 1.9 AC
DESIGN FREQUENCY = 25 YRS
DESIGN DISCHARGE = 3.8 CFS
DESIGN HW ELEVATION = 585.6 FT
100 YEAR DISCHARGE = 4.9 CFS
100 YEAR HW ELEVATION = 585.77 FT
OVERTOPPING FREQUENCY = 500+ YRS
OVERTOPPING DISCHARGE = 19 CFS
OVERTOPPING ELEVATION = 589 FT



BRIDGE HYDRAULIC DATA BOX GIRDER BRIDGE	
DESIGN DISCHARGE	= 2600 CFS
DESIGN FREQUENCY	= 25 YRS
DESIGN HW ELEVATION	= 569.2 FT
100 YEAR DISCHARGE	= 3800 CFS
100 YEAR HW ELEVATION	= 570.7 FT
OVERTOPPING DISCHARGE	= 4600 CFS
OVERTOPPING FREQUENCY	= 200 YRS
OVERTOPPING ELEVATION	= 571.5 FT
DATE OF SURVEY	= 12/7/04
W.S. ELEVATION AT DATE OF SURVEY	= 561.1 FT

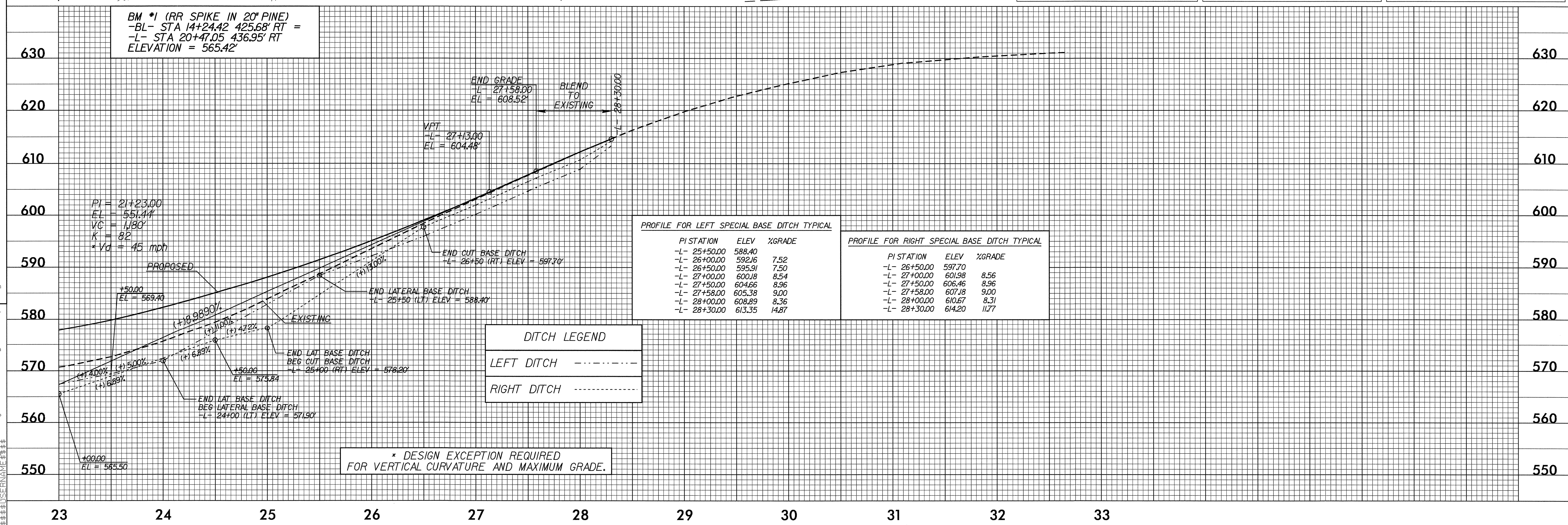
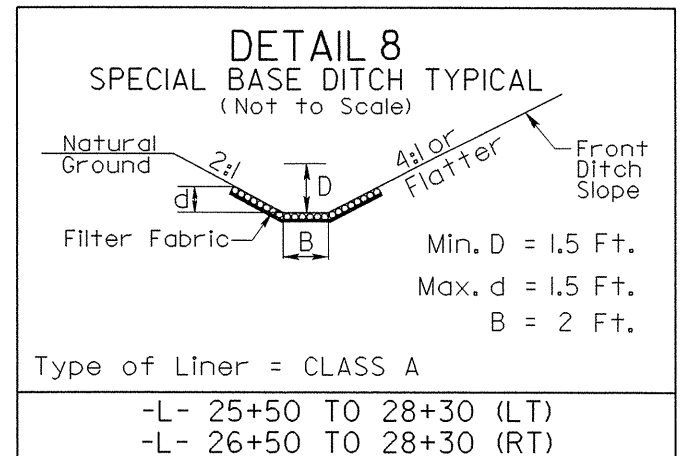
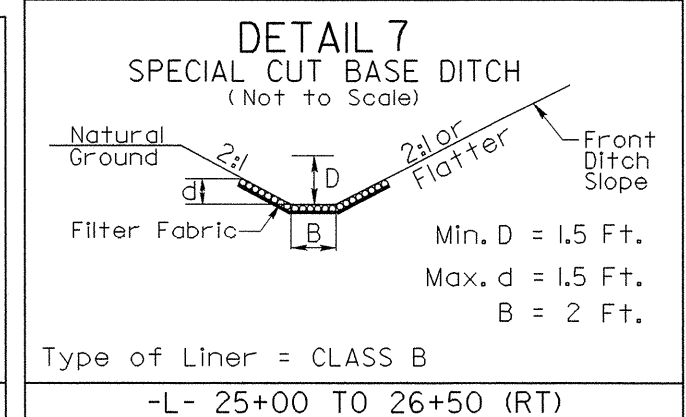
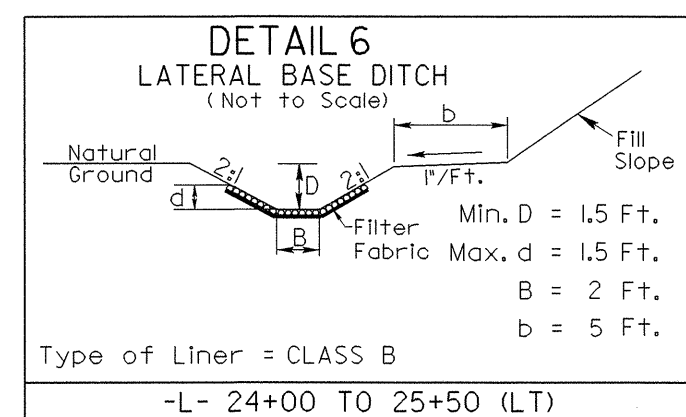
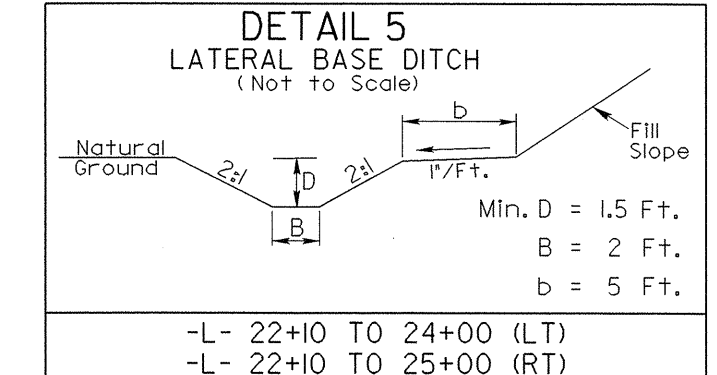
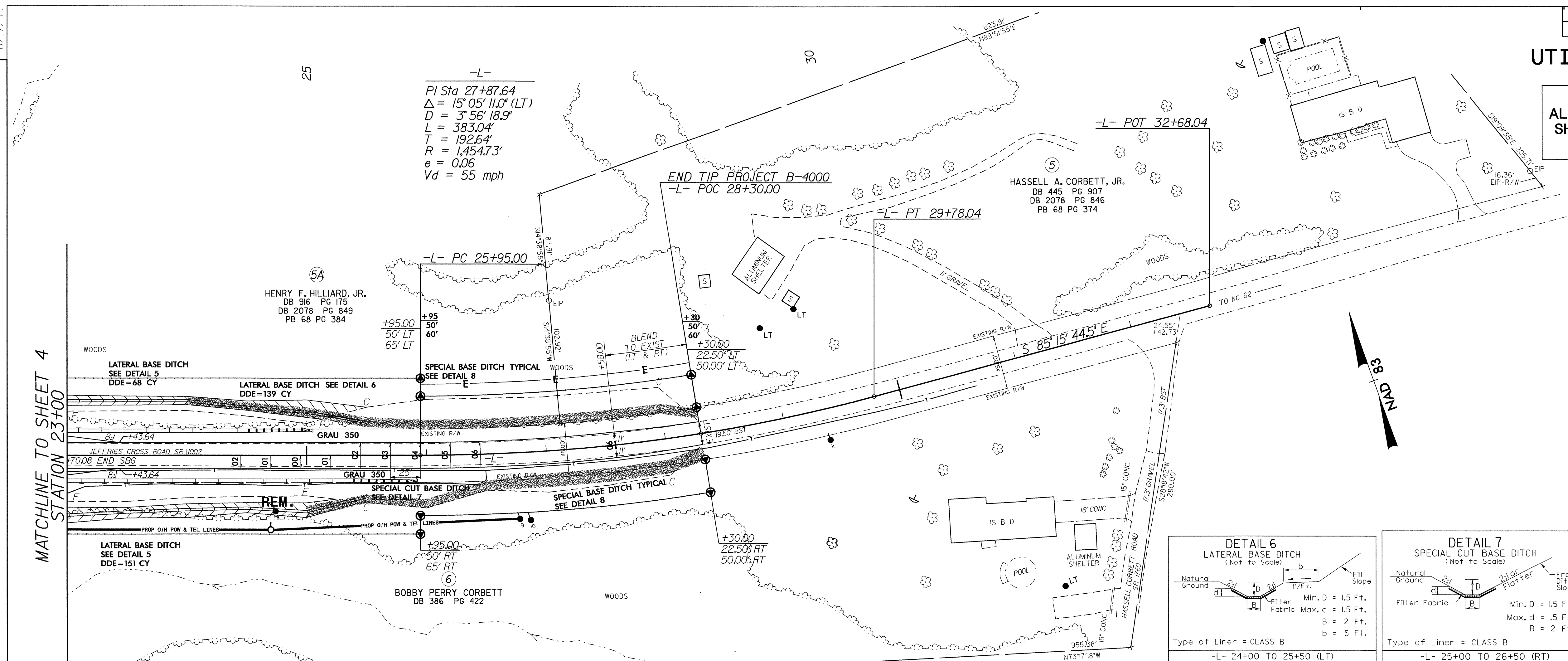
DITCH LEGEND	
LEFT DITCH	-----
RIGHT DITCH	-----

BRIDGE DATA	
PI = 21+23.00	EL = 551.44'
VC = 118.0'	K = 82
* Vd = 45 mph	
END BRIDGE	L- 22+27.00

8/17/09
15-FEB-2007 10:42 J:\P\04\B40000-Ut_rdy04_U02-ph.dgn
5:34:31 PM

UTILITIES BY OTHERS

NOTE:
 ALL PROPOSED UTILITY WORK
 SHOWN ON THIS SHEET WILL
 BE DONE BY OTHERS



8/17/99

REVISIONS

14-FEB-2007 14:05 U:\P\1340000\Uo_rdu05_U03_pfd.dgn
 3:38:41 PM
 3:38:41 PM