

STATE OF
NORTH CAROLINA
DEPT. OF TRANSPORTATION
DIVISION OF HIGHWAYS
RALEIGH, N.C.

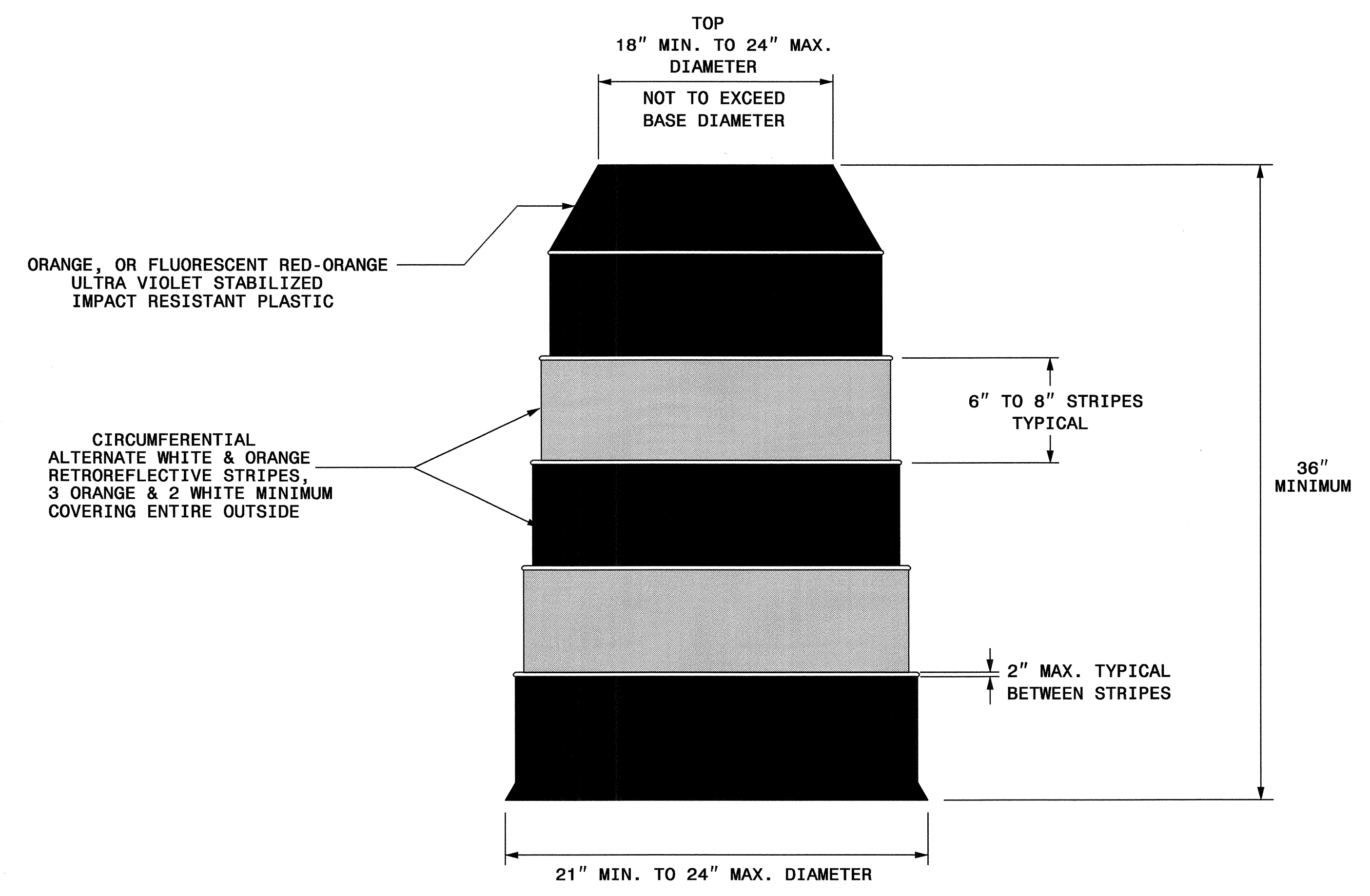
ENGLISH STANDARD DRAWING FOR
DRUMS

SHEET 1 OF 1
1130D01

STATE OF
NORTH CAROLINA
DEPT. OF TRANSPORTATION
DIVISION OF HIGHWAYS
RALEIGH, N.C.

ENGLISH STANDARD DRAWING FOR
DRUMS

SHEET 1 OF 1
1130D01



GENERAL NOTES

- BALLASTING SHALL BE ACHIEVED BY THE SAND BAG, TIRE-SIDEWALL BALLAST, OR PREFORMED WEIGHTED BASE BALLASTING METHODS. DO NOT PLACE BALLAST ON TOP OF THE DRUM.
- IF NECESSARY PLACE THE NAME OF THE AGENCY, CONTRACTOR, OR SUPPLIER ON NON-RETROREFLECTIVE DRUM SURFACES. SHOW THE LETTERS AND NUMBERS USING A NON-RETROREFLECTIVE COLOR AND NOT OVER 2" IN HEIGHT.

APPROVED: _____	DATE: _____	REPLACEMENT DETAIL FOR RSD 1130.01	
		DATE: 4/02	11/02
		DWG. BY: MMM	
		DESIGN BY: MMM	
		REVIEWED BY: MMM	

09-MAR-2007 09:28
 \\D01\DFSR001\GROUPS-WZT\CCC\design\group4\resur-facing\resur-facing2006\div04\37740\decombenc97spec2002\tcp1drums_eng1sh030405.dgn
 pseymore AT WZTC206427

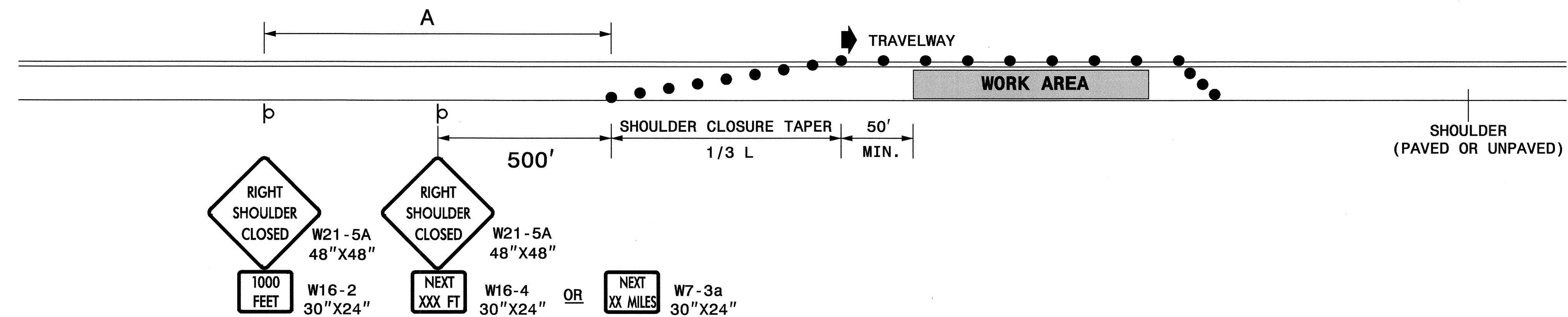
STATE OF NORTH CAROLINA
DEPT. OF TRANSPORTATION
DIVISION OF HIGHWAYS
RALEIGH, N.C.

1-05

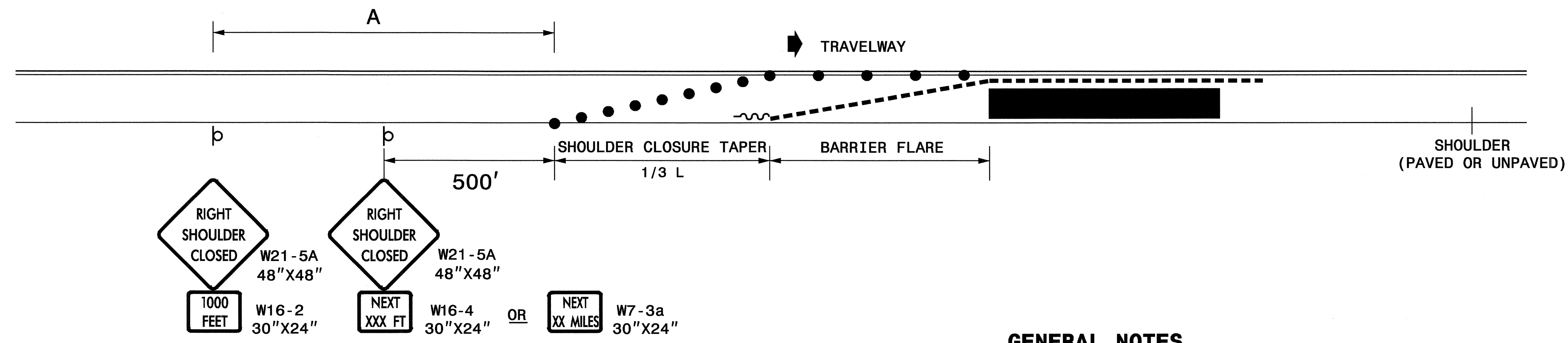
ENGLISH STANDARD DRAWING FOR
TEMPORARY SHOULDER CLOSURES

SHEET 1 OF 1
1101D04

SHOULDER CLOSURES UTILIZING DRUMS



SHOULDER CLOSURES UTILIZING TEMPORARY BARRIER



GENERAL NOTES

- PLACE SHOULDER CLOSURE SIGNS ON THE SAME SIDE AS THE SHOULDER THAT IS CLOSED.
- PLACE DRUMS IN THE SHOULDER TAPER AT THE MAXIMUM SPACING EQUAL IN FEET TO THE POSTED SPEED LIMIT. THE MAXIMUM SPACING OF DRUMS ALONG THE WORK AREA AND BARRIER FLARE IS EQUAL IN FEET TO 2 TIMES THE POSTED SPEED LIMIT.
- FLARE THE APPROACH END OF PORTABLE CONCRETE BARRIER BEYOND THE SHOULDER AND USE A CRASH CUSHION FOR PROTECTION IF THE EXPOSED END OF THE BARRIER IS WITHIN THE "CLEAR ZONE".
- USE STATIONARY SIGNS FOR LONG TERM OPERATIONS (LONGER THAN 3 DAYS).
- REFER TO STD. 1101.11 SHEETS 1, 3, & 4, FOR "L" DISTANCE, BARRIER FLARE RATES, AND SIGN SPACING.

LEGEND

- ~ TEMPORARY CRASH CUSHION
- - - PORTABLE CONCRETE BARRIER
- DRUM
- ⊔ STATIONARY OR PORTABLE SIGN
- ➔ DIRECTION OF TRAFFIC FLOW

STATE OF NORTH CAROLINA
DEPT. OF TRANSPORTATION
DIVISION OF HIGHWAYS
RALEIGH, N.C.

1-05

ENGLISH STANDARD DRAWING FOR
TEMPORARY SHOULDER CLOSURES

SHEET 1 OF 1
1101D04

APPROVED: _____ DATE: _____	<p>REPLACEMENT DETAIL FOR RSD 1101.04</p>	SCALE: NONE	REVISIONS
		DATE: 11/04	08/05
	DWG. BY: PS		
	DESIGN BY: JPG		
	REVIEWED BY: MMM		

09-MAR-2007 09:30
 \\D01\OFFS00\010\GROUPS-WZ\TCCC\design\group4\resur-facing\resur-facing\2006\div04\37740\edgecombenc97spec2002\top2\shoulder\closur-es05.dgn
 psey@more

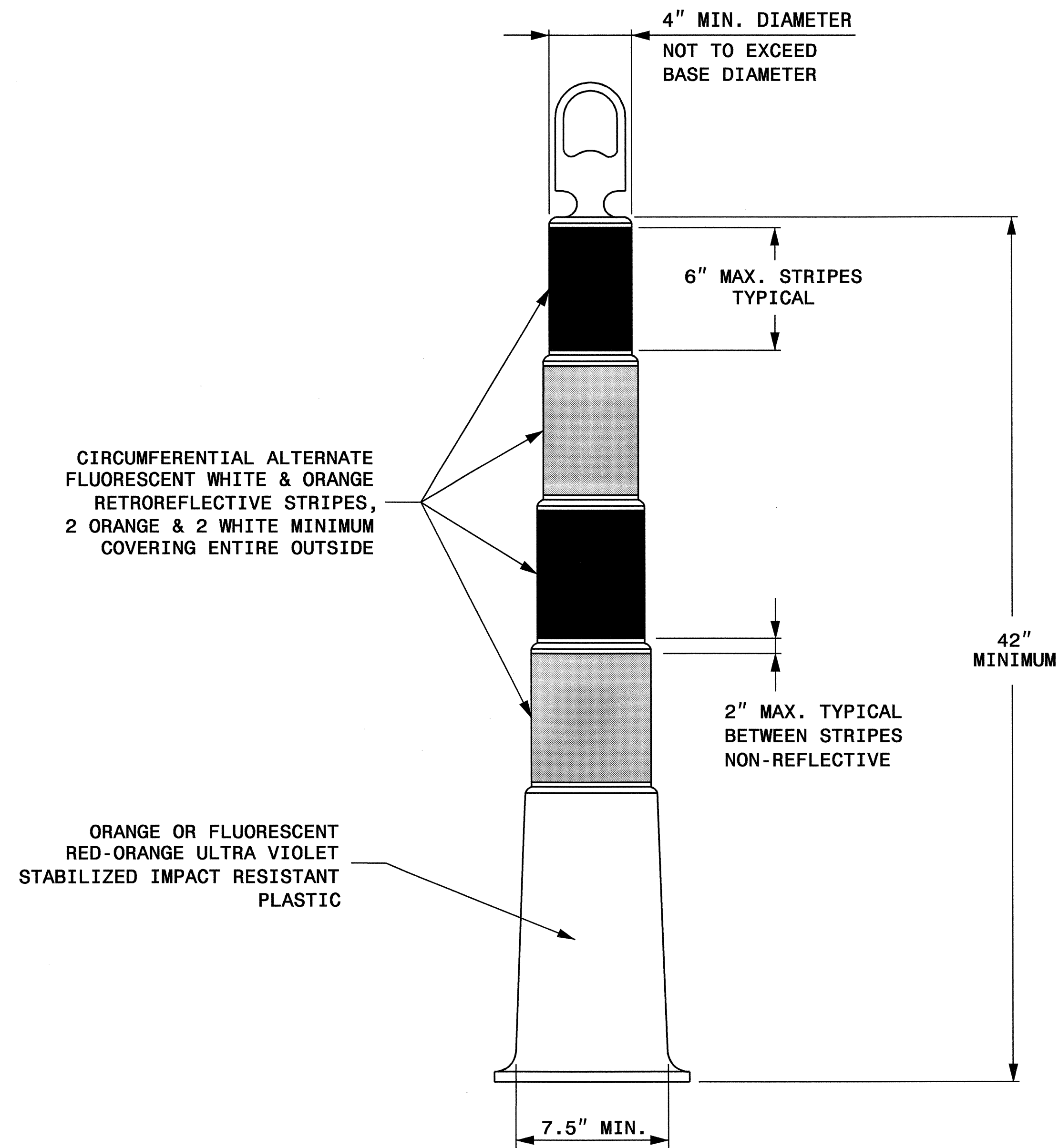
STATE OF
NORTH CAROLINA
DEPT. OF TRANSPORTATION
DIVISION OF HIGHWAYS
RALEIGH, N.C.

7-06

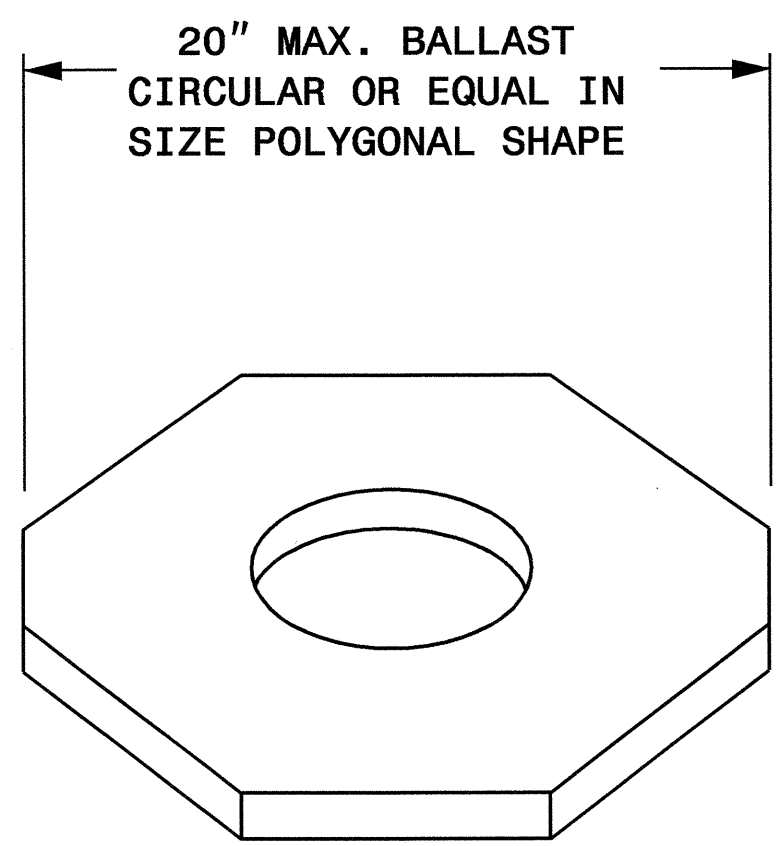
ENGLISH STANDARD DRAWING FOR
SKINNY - DRUM

SHEET 1 OF 1

1180.01



TYPICAL BALLAST



BALLAST WILL BE A MINIMUM OF 20 POUNDS

GENERAL NOTES

- 1-BALLASTING SHALL BE ACHIEVED BY THE PREFORMED WEIGHTED BASE OR FACTORY SAND FILLED BALLASTING METHODS. DO NOT PLACE BALLAST ON TOP OF THE DRUM. USE BALLAST AS SPECIFIED BY THE MANUFACTURER.
- 2-IF NECESSARY, PLACE THE NAME OF THE AGENCY, CONTRACTOR, OR SUPPLIER ON NON-RETROREFLECTIVE DRUM SURFACES. IF THE NAME DOES NOT FIT ON A NON-RETROREFLECTIVE SURFACE. SHOW THE LETTERS AND NUMBERS USING A NON-RETROREFLECTIVE COLOR AND NOT OVER 2" IN HEIGHT.

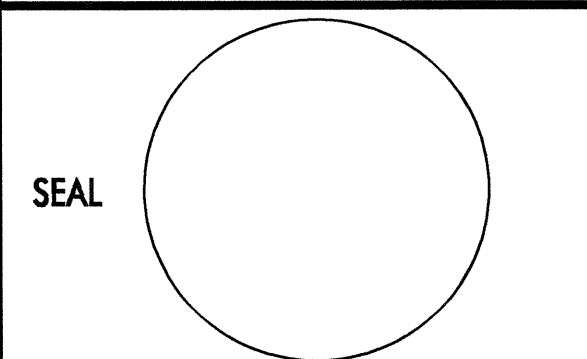

STATE OF
NORTH CAROLINA
DEPT. OF TRANSPORTATION
DIVISION OF HIGHWAYS
RALEIGH, N.C.

7-06

ENGLISH STANDARD DRAWING FOR
SKINNY - DRUM

SHEET 1 OF 1

1180D01

APPROVED: _____	DATE: _____	REPLACEMENT DETAIL FOR RSD 1180.01	
			
SCALE: NONE	DATE: 03-02-07		REVISIONS
DWG. BY: _____	DESIGN BY: _____		
REVIEWED BY: _____			

09-MAR-2007 09:32
 \\P01VDESIGN\GROUPS\GROUPS-WZT\CC\design\group4\resur-facing\resur-facing2006\div04\37740\edge\combenc97spec2002\11800101.dgn
 pssymore AT WZT\206427