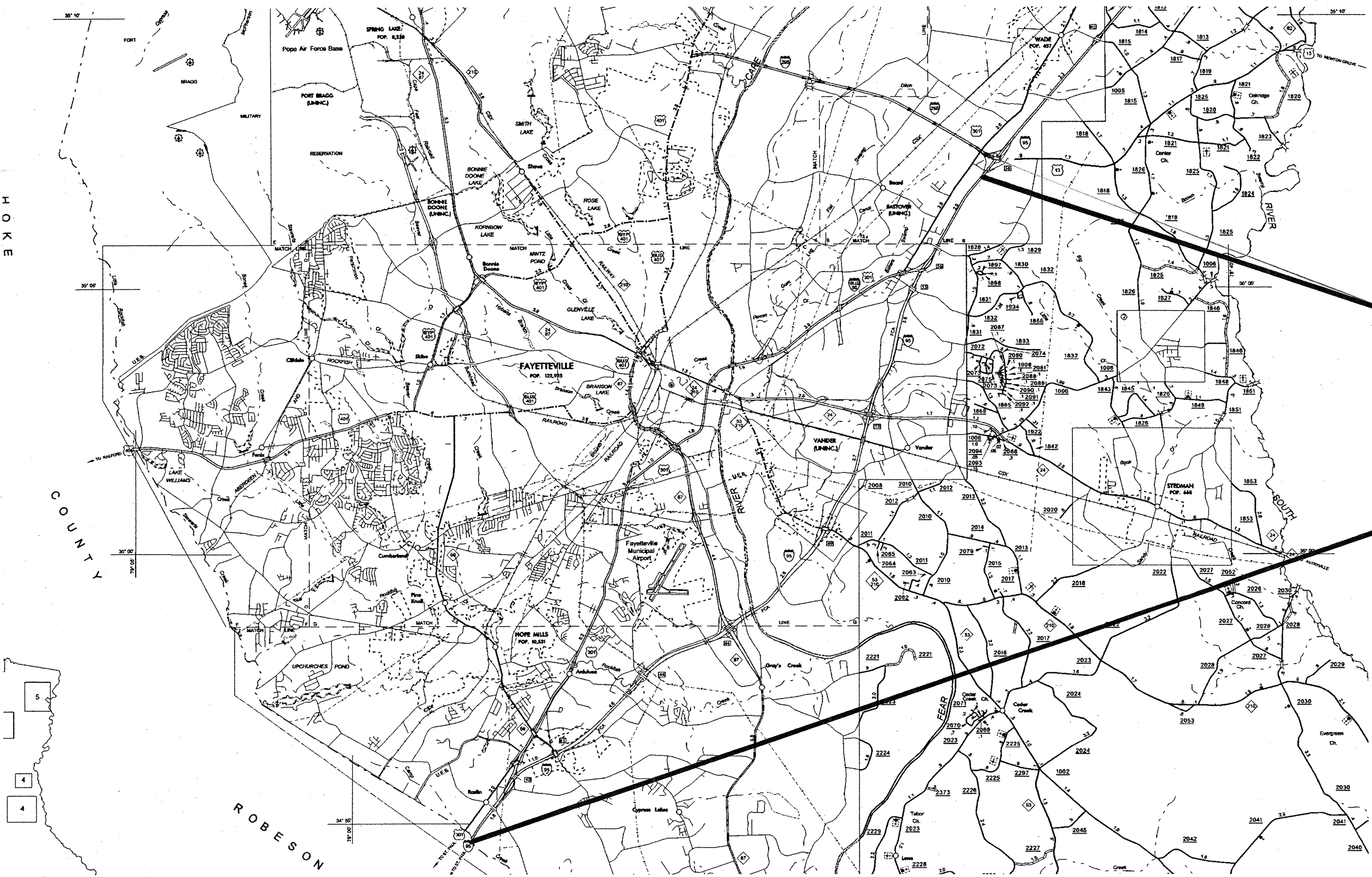


40222.3.GV1
Sheet No. 1
-201748

I-4917
Cumberland Co.

MAP
1

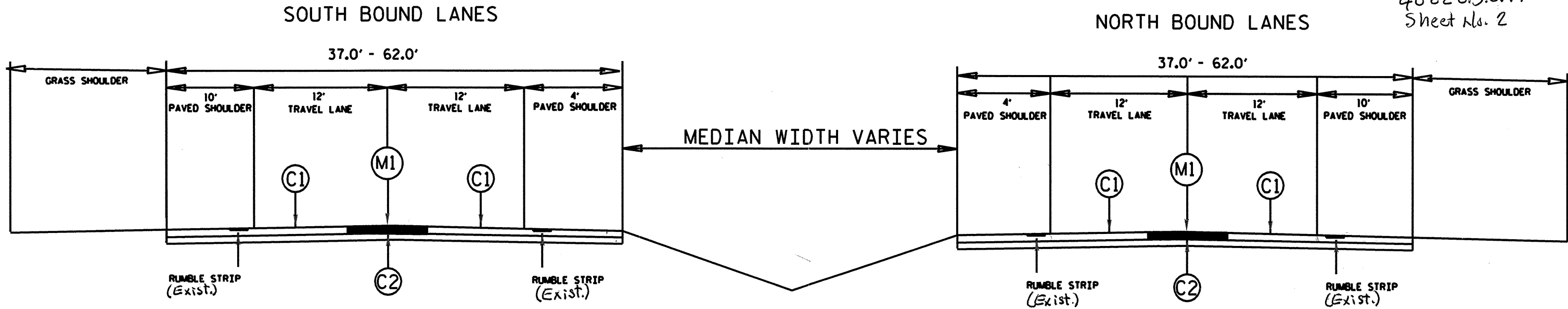


HOKE

COUNTY

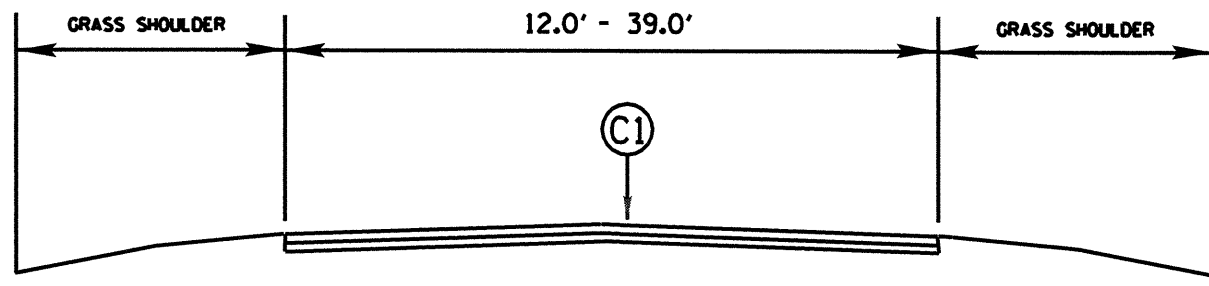
ROBESON





TYPICAL SECTION NO. 1

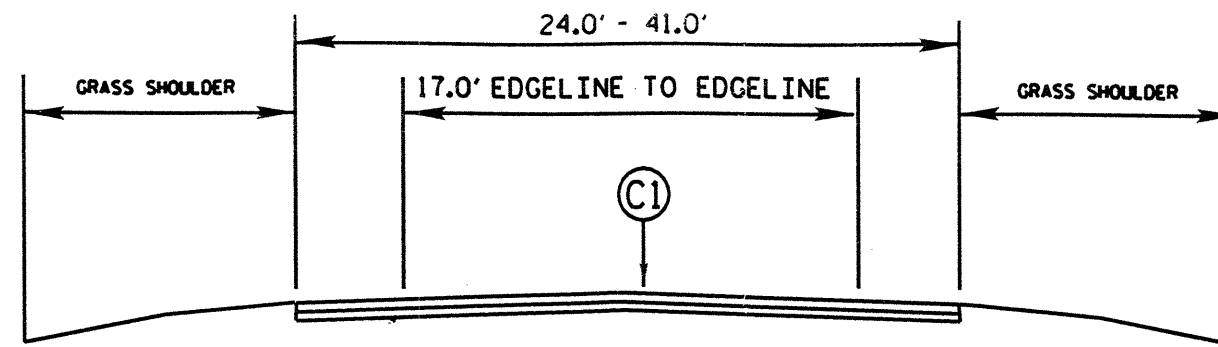
PAVEMENT SCHEDULE	
C1	PROP. ULTRATHIN BONDED WEARING COURSE AT AN AVERAGE RATE OF 70 LBS. PER SQ. YD.
C2	PROP. APPROX. 3.0" ASPHALT CONCRETE SURFACE COURSE, TYPE S12.5D, AT AN AVERAGE RATE OF 336 LBS. PER SQ. YD.
C3	PROP. APPROX. 2.5" ASPHALT CONCRETE SURFACE COURSE, TYPE S12.5D, AT AN AVERAGE RATE OF 280 LBS. PER SQ. YD.
M1	MILLING AT AN AVERAGE DEPTH OF 3.0" AT A WIDTH OF 4'. (2' EACH SIDE OF THE CENTERLINE JOINT)
M2	MILLING AT AN AVERAGE DEPTH OF 2.5" FOR A LENGTH OF 50' AT THE BRIDGE APPROACHMENTS AND DEPARTURES.



**RAMP TIE-INS
AND
RAMPS**

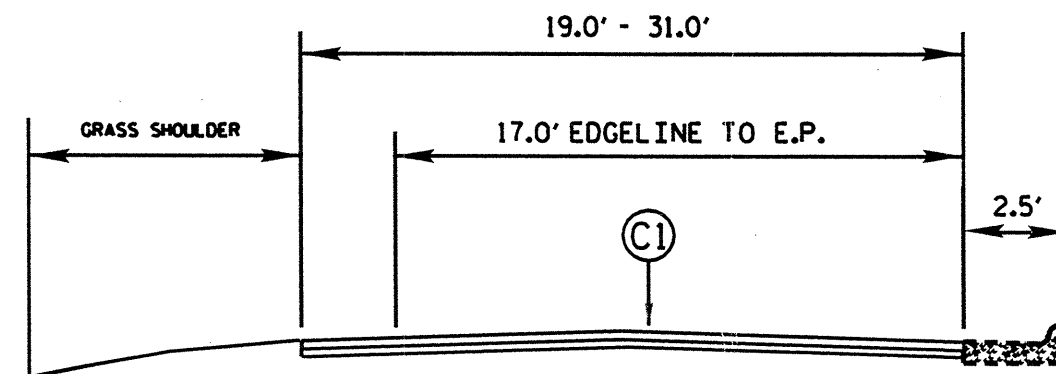
TYPICAL SECTION NO. 2

NOTE: FOR ALL MAINLINE AND RAMP TIE-INS, PLACE ULTRATHIN FROM EDGE OF RUMBLE STRIP TO EDGE OF RUMBLE STRIP.



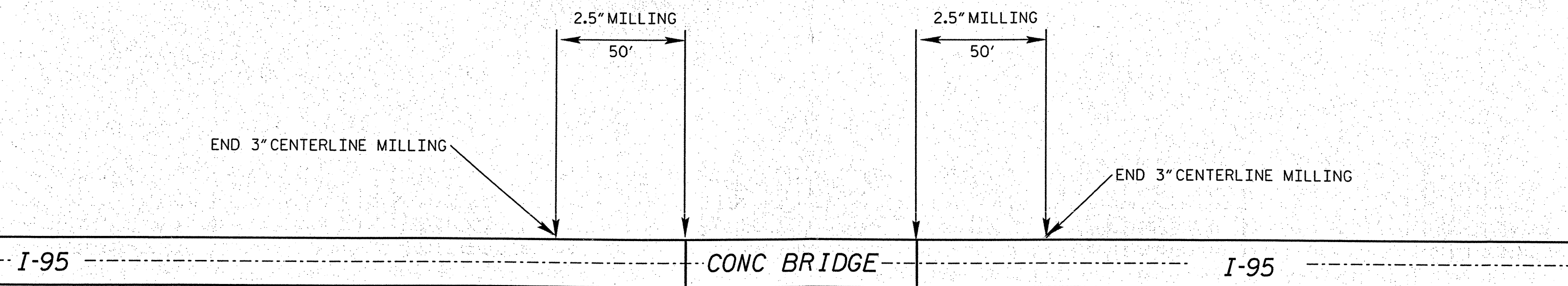
COLLECTORS/DISTRIBUTORS
TYPICAL SECTION NO. 3

NOTE: FOR ALL COLLECTOR/DISTRIBUTORS, PLACE ULTRATHIN FROM OUTSIDE OF EDGELINE TO OUTLINE OF EDGELINE.

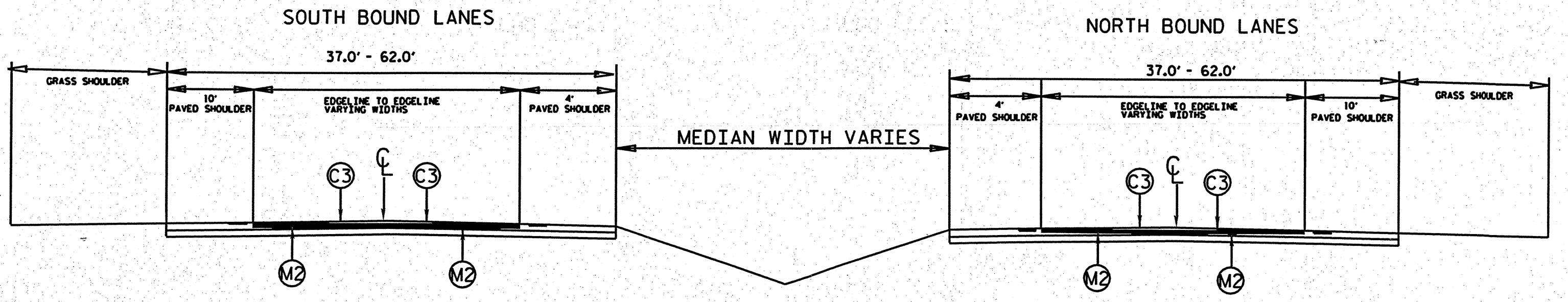


LOOPS
TYPICAL SECTION NO. 4

NOTE: FOR ALL LOOPS, PLACE ULTRATHIN FROM OUTSIDE OF EDGELINE TO EDGE OF PAVEMENT.



* MILLING WILL BE FROM EDGELINE TO EDGELINE. WIDTHS WILL VARY.



TYPICAL SECTION NO. 5

	SHEET NO.
40222.3.GV1	5

SUMMARY OF QUANTITIES

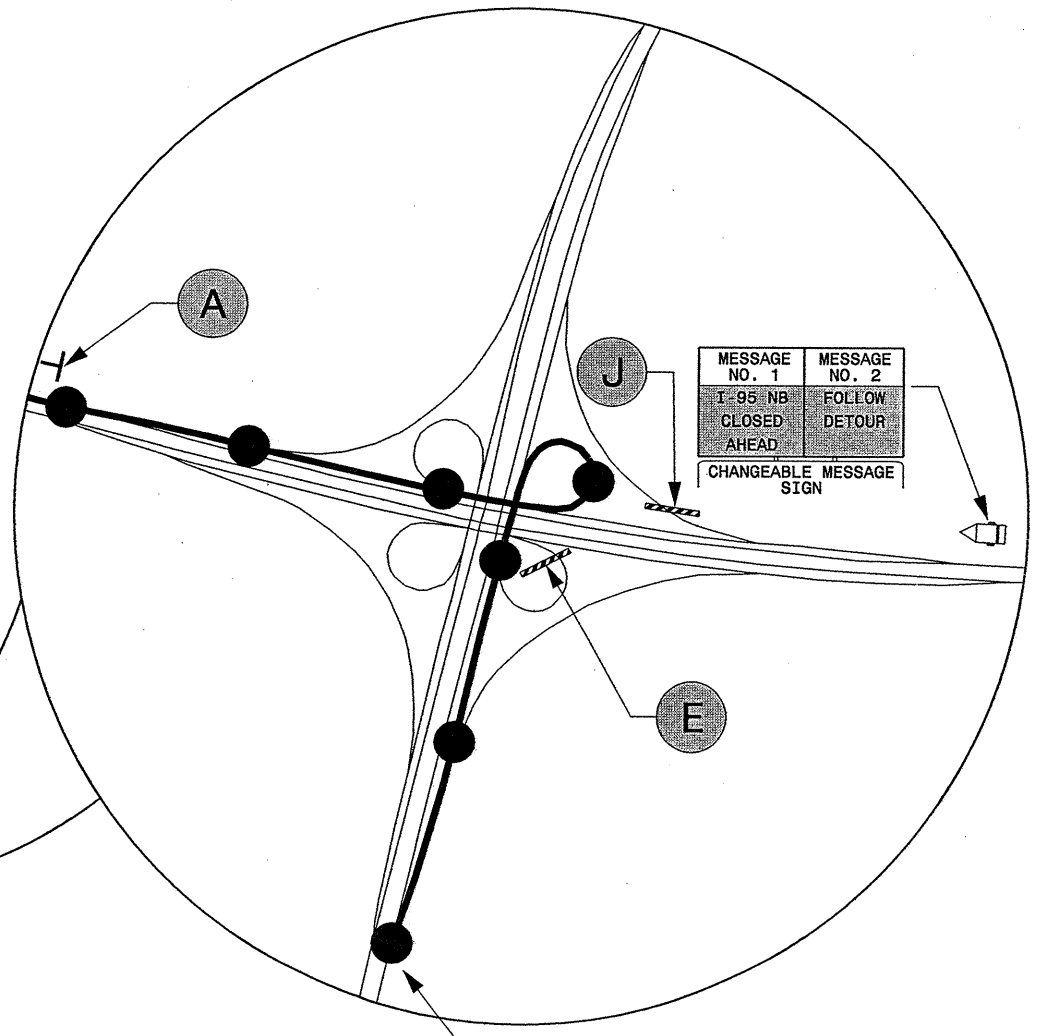
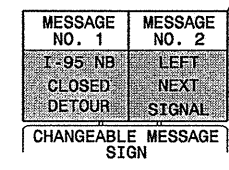
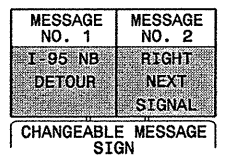
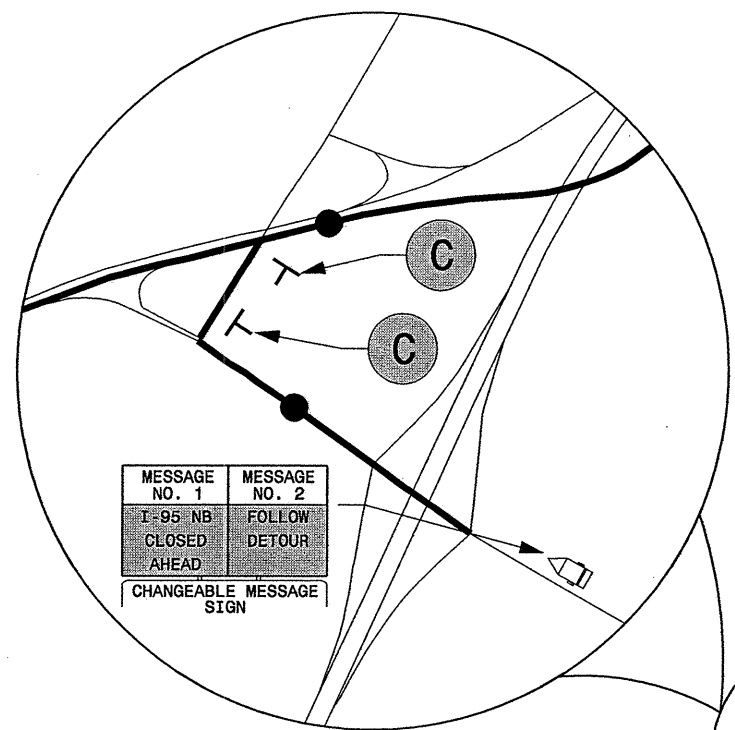
PROJECT	COUNTY	MAP	ROUTE	DESCRIPTION	TYP	LENGTH	WIDTH	ULTRATHIN HOT MIX ASPHALT TYPE B	APPLICATION OF ULTRATHIN HOT MIX	PATCHING EXISTING PAVEMENT	2.5 " MILLING	3" MILLING	SURFACE COURSE, S12.5D	PG 70-28 PLANT MIX	PG 76-22 PLANT MIX
NO		NO			NO	MI	FT	TON	SY	TON	SY	SY	TONS	TONS	TONS
40222.3.GV1	Cumberland	1	I-95 NBL	FROM ROBESON COUNTY LINE TO PAVEMENT JT. @ I-295	1	18.4	25.5	9634	275264	400		43179	7,254	501	399
		1	I-95 SBL	FROM ROBESON COUNTY LINE TO PAVEMENT JT. @ I-295	1	18.44	25.5	9655	275863	400		43273	7,270	502	400
		1	COLLECTOR/DISTRIBUTOR	NC 24 & NC 87 NBL & SBL	3	4.4	17	1536	43883					80	
		1	RAMP TIE-INS	FROM ROBESON COUNTY LINE TO PAVEMENT JT. @ I-295	2	9.14	17	3190	91157					166	
		1	RAMPS	@ EXIT 41, 44, 49, & 55	2	2.81	17	1065	28025					56	
		1	I-95 LOOPS	@ NC 24 & NC 87	4	1.96	17	684	19548					36	
		1	I-95 NBL	BRIDGE APPROACHES	5	0.14	25.5				2546		357		17
		1	I-95 SBL	BRIDGE APPROACHES	5	0.14	31				2546		357		17
TOTAL FOR PROJ NO. 40222.3.GV1						55.43		25764	733740	800	5092	86452	15,238	1,341	833

NOTE: BRIDGE APPROACHES QUANTITIES INCLUDE DECEL. AND ACCEL. LANES.

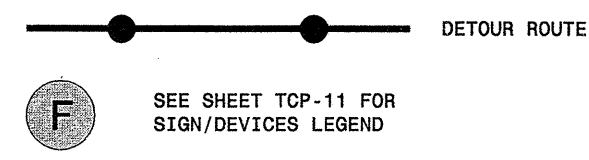
THERMOPLASTIC AND PAINT QUANTITIES

PROJECT	COUNTY	MAP	ROUTE	DESCRIPTION	4688000000-E		4689000000-E	4700000000-E	4702000000-E	4688500000-E		4688600000-E	4695000000-E	4710000000-E	4725000000-E					4810000000-E		4815000000-E	4820000000-E	4825000000-E	
					6" WHITE THERMO 90 MILS	6" YELLOW THERMO 90 MIL	6" WHITE THERMO 120 MIL	12" WHITE THERMO 90 MIL	12" WHITE THERMO 120 MIL	4" WHITE THERMO 90 MILS	4" YELLOW THERMO 90 MILS	4" WHITE THERMO 120 MILS	8" WHITE THERMO 90 MILS	24" WHITE THERMO 120 MILS	THERMO STR ARROW 90 M	THERMO LT ARROW 90 M	THERMO RT ARROW 90 M	THERMO RAMP ARROW 90 MIL	THERMO STR & LT ARROW 90 M	4" WHITE PAINT	4" YELLOW PAINT	6" WHITE PAINT	6" YELLOW PAINT	8" WHITE PAINT	12" WHITE PAINT
NO		NO			LF	LF	LF	LF	LF	LF	LF	LF	LF	LF	EA	EA	EA	EA	EA	LF	LF	LF	LF	LF	LF
40222.3.GV1	Cumberland	1	I-95 NBL	FROM ROBESON COUNTY LINE TO PAVEMENT JT. @ I-295	198000	196000	53000		26000						50								260,000	200,000	25,000
		1	I-95 SBL	FROM ROBESON COUNTY LINE TO PAVEMENT JT. @ I-295																					
		1	COLLECTOR/DISTRIBUTOR	NC 24 & NC 87 NBL & SBL	20000	22000	2000	6,000							12							22,000	22,000	6,000	
		1	RAMP TIE-INS	FROM ROBESON COUNTY LINE TO PAVEMENT JT. @ I-295																					
	Cumberland	1	RAMPS	@ EXIT 41, 44, 49, & 55						18,000	7,323	100	3,000	60	1	4	7	8	3	18,000	18,000			3,000	
		1	I-95 LOOPS	@ NC 24 & NC 87							10677														
TOTAL FOR PROJ NO. 40222.3.GV1					218000	218000	55000	6000	26000	18,000	18,000	100	3,000	60	63	4	7	8	3	18,000	18,000	282,000	222,000	3,000	31,000
GRAND TOTAL FOR 40222.3.GV1					436000		55000	6000	26000	36,000		100	3,000	60	85					36,000		504,000	3,000	31,000	

PROJECT	COUNTY	MAP	ROUTE	DESCRIPTION	4835000000-E	4850000000-E	4855000000-E	4900000000-N	4400000000-E	4405000000-E	4410000000-E	4415000000-E	4420000000-E	4430000000-E	4445000000-E	4480000000-E	4510000000-E	5255000000-N	4905000000-N
					24" WHITE PAINT	4" LINE REMOVAL	6" LINE REMOVAL	CYAN & RED MARKERS	STATIONARY WORK ZONE SIGNS	PORTABLE WORK ZONE SIGNS	BARRICADE MOUNTED WORK ZONE SIGNS	FLASHING ARROW PANELS, TYPE C	CHANGEABLE MESSAGE SIGNS	DRUMS	BARRICADES (TYPE III)	TRUNK MOUNTED IMPACT ATTENUATORS (60 MPH)	POLICE	PORTABLE LIGHTING	SNOW PLOWABLE MARKERS
NO		NO			LF	LF	LF	EA	SF	SF	SF	EA	EA	EA	FL	EA	HR	LS	EA
40222.3.GV1	Cumberland	1	I-95 NBL	FROM ROBESON COUNTY LINE TO PAVEMENT JT. @ I-295			485000		227	160	116	2	7	336	88	2	240	1	4,000
		1	I-95 SBL	FROM ROBESON COUNTY LINE TO PAVEMENT JT. @ I-295															
		1	COLLECTOR/DISTRIBUTOR	NC 24 & NC 87 NBL & SBL		50,000													300
		1	RAMP TIE-INS	FROM ROBESON COUNTY LINE TO PAVEMENT JT. @ I-295															
	Cumberland	1	RAMPS	@ EXIT 41, 44, 49, & 55	60	39,060		300											
		1	I-95 LOOPS	@ NC 24 & NC 87															
TOTAL FOR PROJ NO. 40222.3.GV1					60	89,060	485000	300	227	160	116	2	7	336	88	2	240	1	4,300
GRAND TOTAL FOR 40222.3.GV1					60	89,060	485000	300	227	160	116	2	7	336	88	2	240	1	4,300



SEE SHEET TCP-10 FOR ADVANCE WARNING SIGNS AND DEVICES FOR CLOSURE OF I-95 LANES



APPROVED: *Jessica D. Nuse* DATE: 04/07

SEAL:

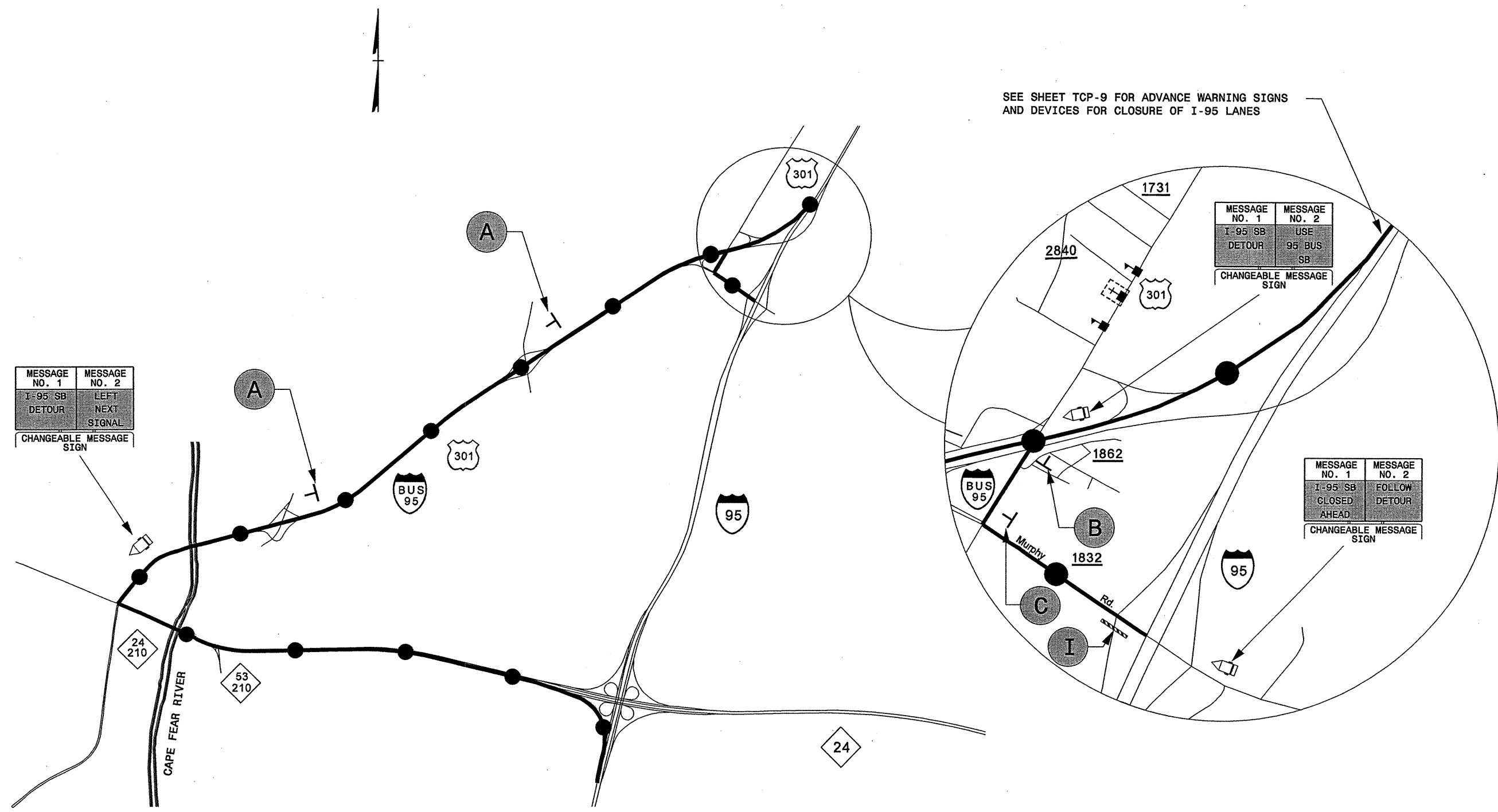
SEGMENT 1 NB I-95 CLOSURE DETOUR

SCALE: NONE		REVISIONS
DATE: 04/07		
DWG. BY: DWB		
DESIGN BY: DWB		

REVIEWED BY: JDK

18-APR-2007 08:48 \\ADOIT\DFSP00101\GROUPS-WZTCCC\design\group\pl\dglisqa\I-4917\I-4917.fc.tcp_01.dgn
 rindarrett AT WZTCC2223

SEE SHEET TCP-9 FOR ADVANCE WARNING SIGNS AND DEVICES FOR CLOSURE OF I-95 LANES



MESSAGE NO. 1	MESSAGE NO. 2
I-95 SB	LEFT
DETOUR	NEXT
CHANGEABLE MESSAGE SIGN	

MESSAGE NO. 1	MESSAGE NO. 2
I-95 SB	USE
DETOUR	95 BUS
	SB
CHANGEABLE MESSAGE SIGN	

MESSAGE NO. 1	MESSAGE NO. 2
I-95 SB	FOLLOW
CLOSED	DETOUR
AHEAD	
CHANGEABLE MESSAGE SIGN	

—●—●—●— DETOUR ROUTE

X SEE SHEET TCP-11 FOR SIGN/DEVICES LEGEND

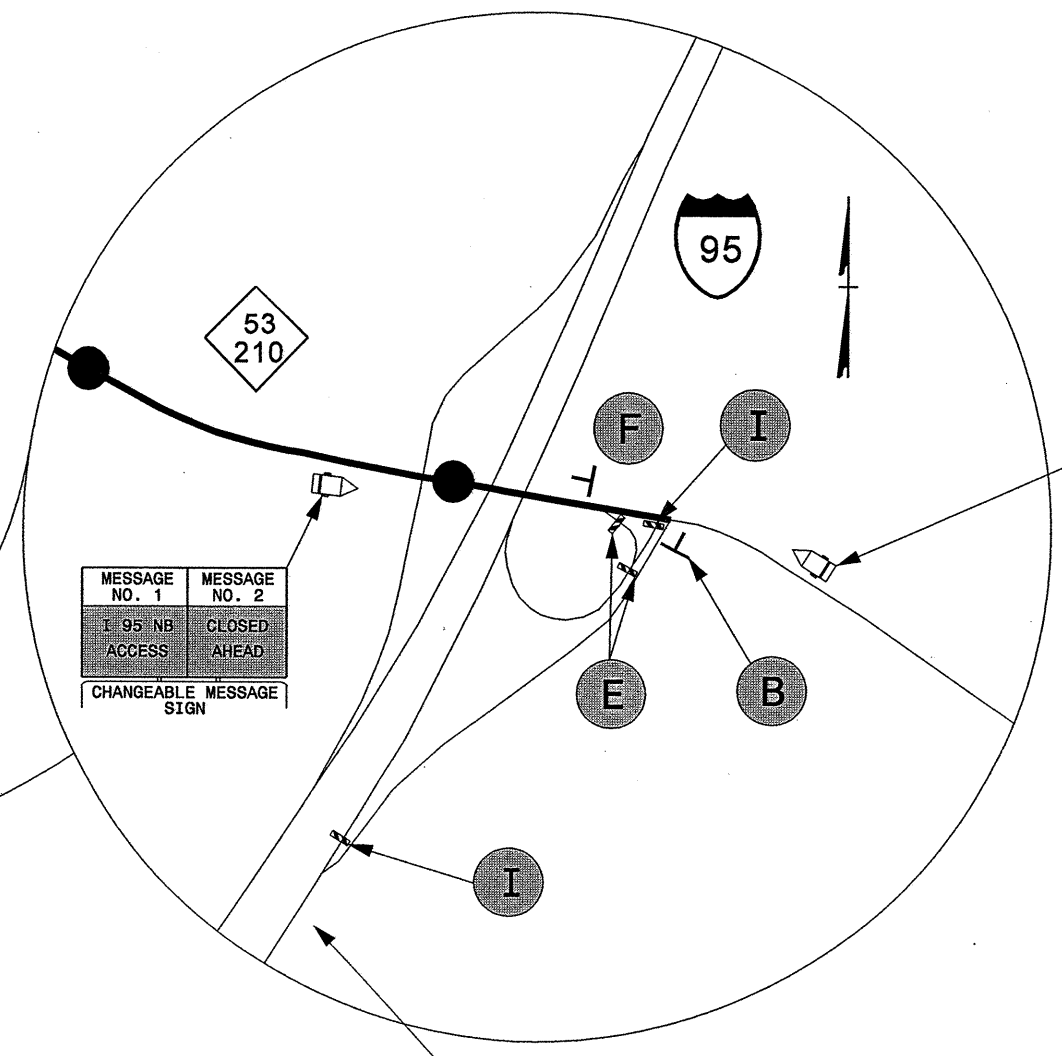
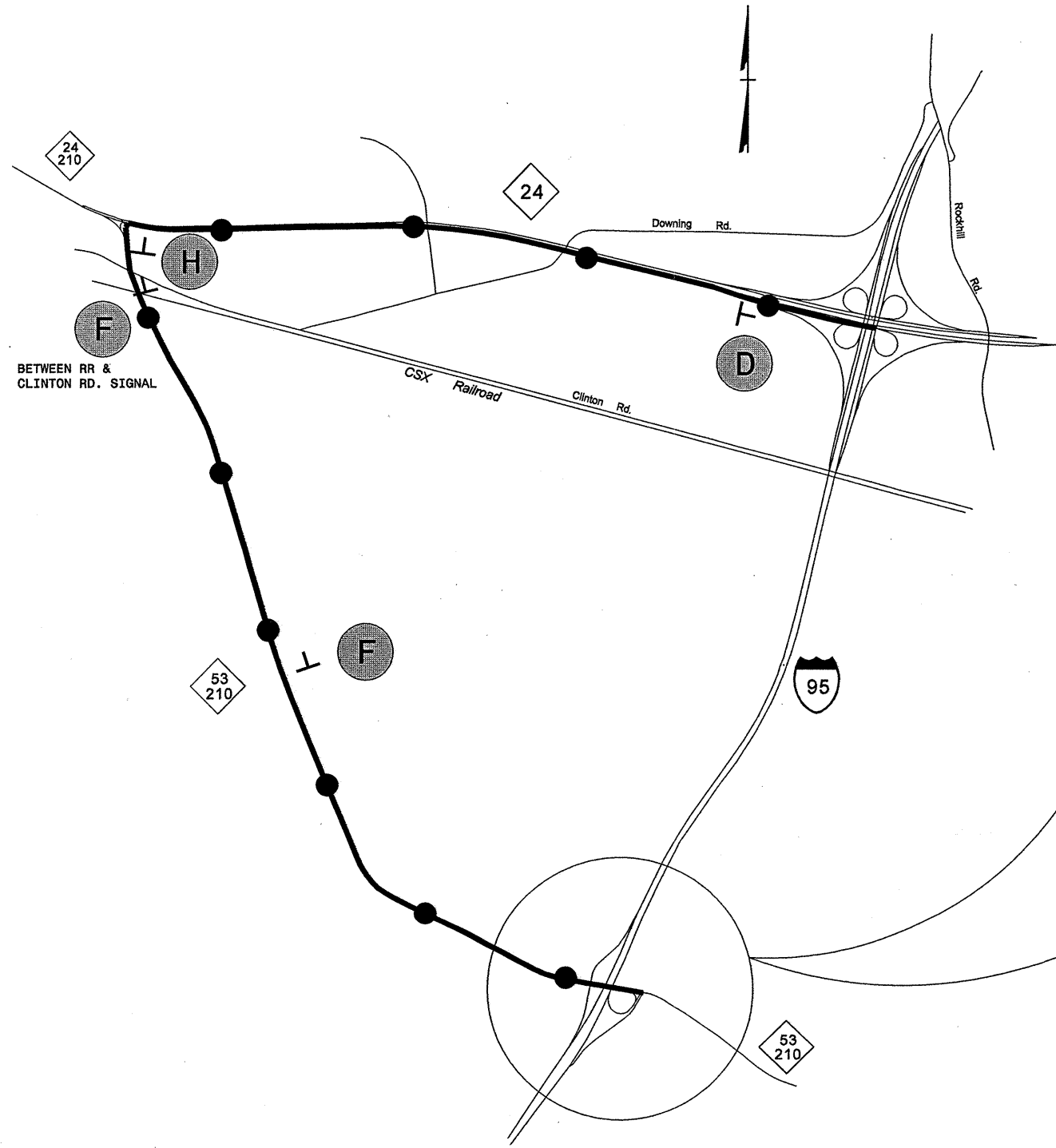
APPROVED: *Jessica D. Kuse* DATE: 4/13/07

**SEGMENT 1
SB I-95 CLOSURE DETOUR**

SCALE: NONE		REVISIONS
DATE: 04/07		
DWG. BY: DWB		
DESIGN BY: DWB		
REVIEWED BY: JDK		

CADD FILE

13-APR-2007 09:42
 \DOT\DFSROOT\GROUPS\WZTCCC\design\group\1-4917\1-4917.TC.TCP_04.dgn
 rmgarratt AT WZTCCC2229



MESSAGE NO. 1	MESSAGE NO. 2
I 95 NB ACCESS CLOSED	FOLLOW DETOUR

CHANGEABLE MESSAGE SIGN

MESSAGE NO. 1	MESSAGE NO. 2
I 95 NB ACCESS CLOSED	CLOSED AHEAD

CHANGEABLE MESSAGE SIGN

SEE SHEET TCP-9 FOR ADVANCE WARNING SIGNS AND DEVICES FOR CLOSURE OF I-95 LANES.



X SEE SHEET TCP-11 FOR SIGN / DEVICES LEGEND.

APPROVED: <i>Josiah</i> DATE: 11/13/07	SEGMENT 2A NB I-95 CLOSURE DETOUR	
	SCALE: NONE	
	DATE: 03/07	
	DWG. BY: RMG	
	DESIGN BY: RMG	
REVIEWED BY: JDK	REVISIONS	

13-APR-2007 09:42
 \\dot\dfsroot\group\wz\cccc\design\group\1-4917\1-4917_TC_TCP_05.dgn
 AT W11C2225j
 rmgarrrett

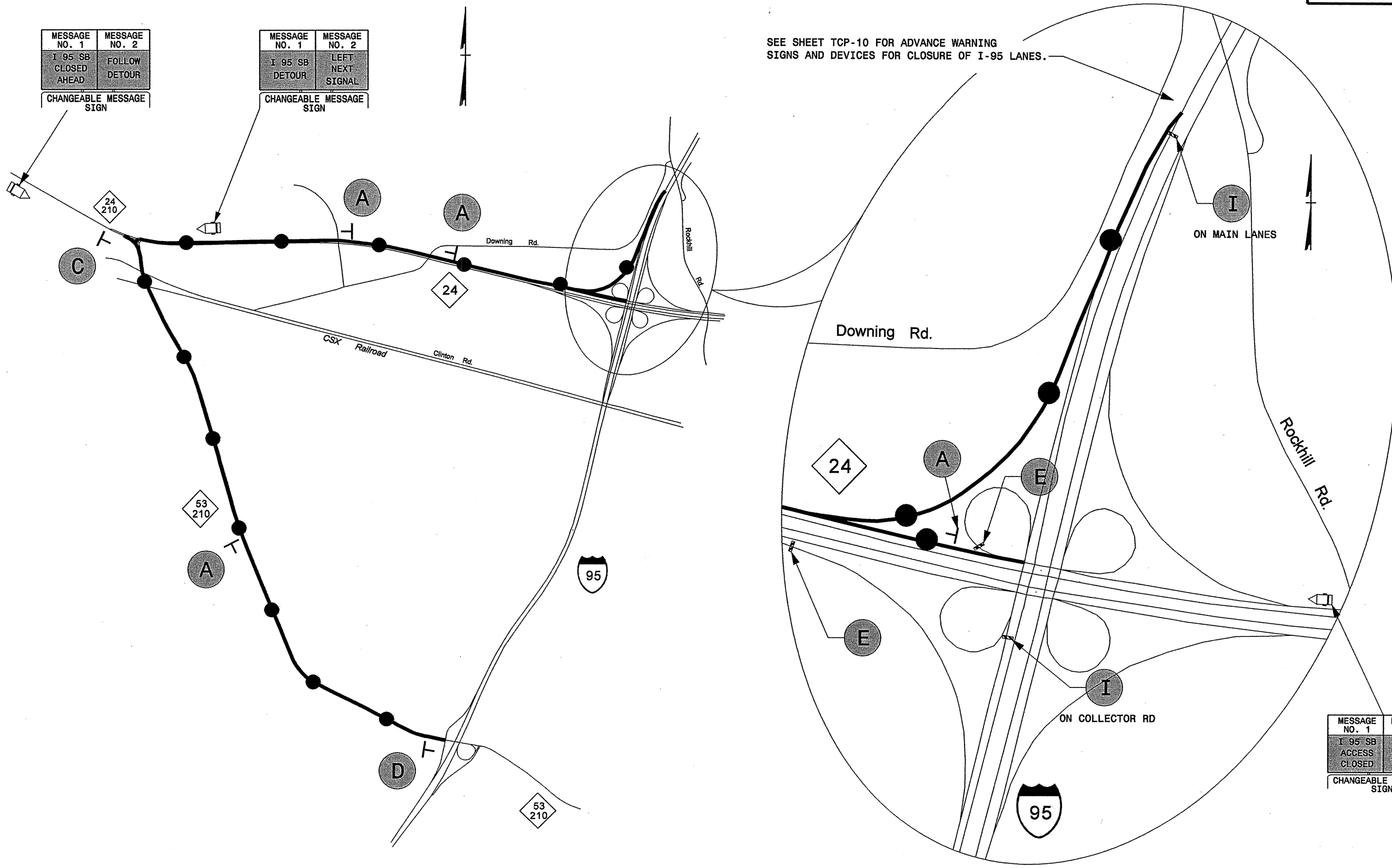
MESSAGE NO. 1	MESSAGE NO. 2
I 95 SB CLOSED AHEAD	FOLLOW DETOUR

CHANGEABLE MESSAGE SIGN

MESSAGE NO. 1	MESSAGE NO. 2
I 95 SB DETOUR	LEFT NEXT SIGNAL

CHANGEABLE MESSAGE SIGN

SEE SHEET TCP-10 FOR ADVANCE WARNING SIGNS AND DEVICES FOR CLOSURE OF I-95 LANES.



●—●—●—● DETOUR ROUTE

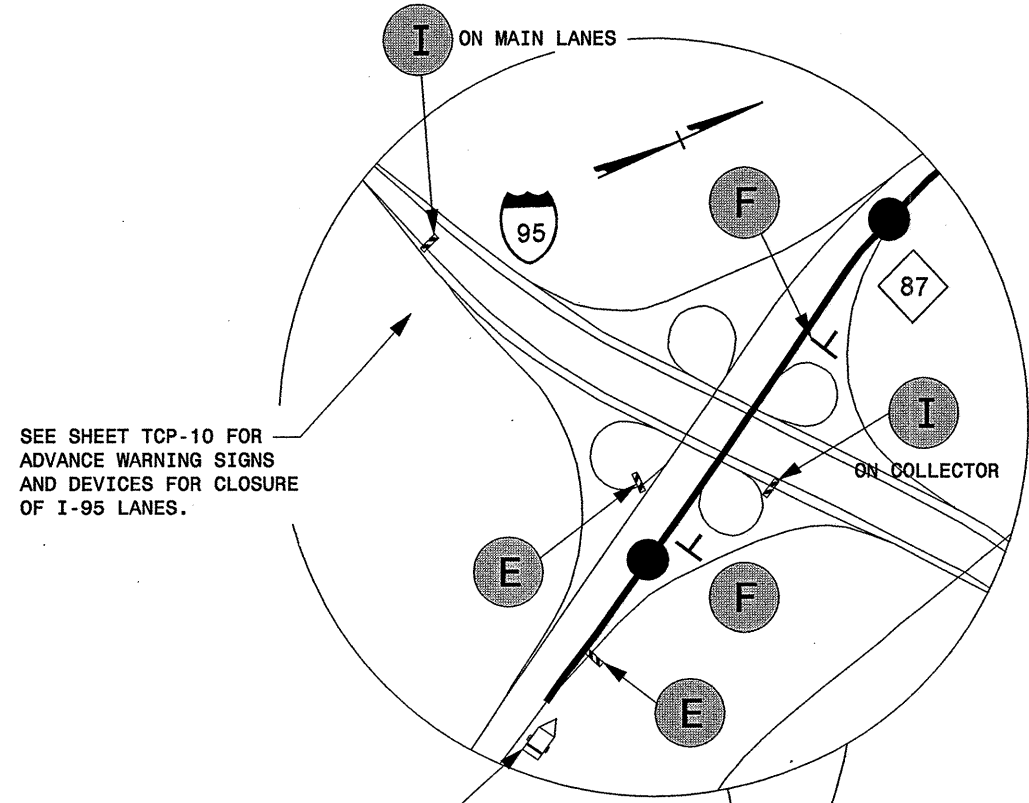
X SEE SHEET TCP-11 FOR SIGN / DEVICES LEGEND.

MESSAGE NO. 1	MESSAGE NO. 2
I 95 SB ACCESS CLOSED	FOLLOW DETOUR

CHANGEABLE MESSAGE SIGN

13-APR-2007 09:42
 \\DOT\DFSR001\GROUPS-WZTCCC\design\group\pl\dglscq\1-4917\1-4917.TCP_06.dgn
 AT WZTC2229
 rmgarrett

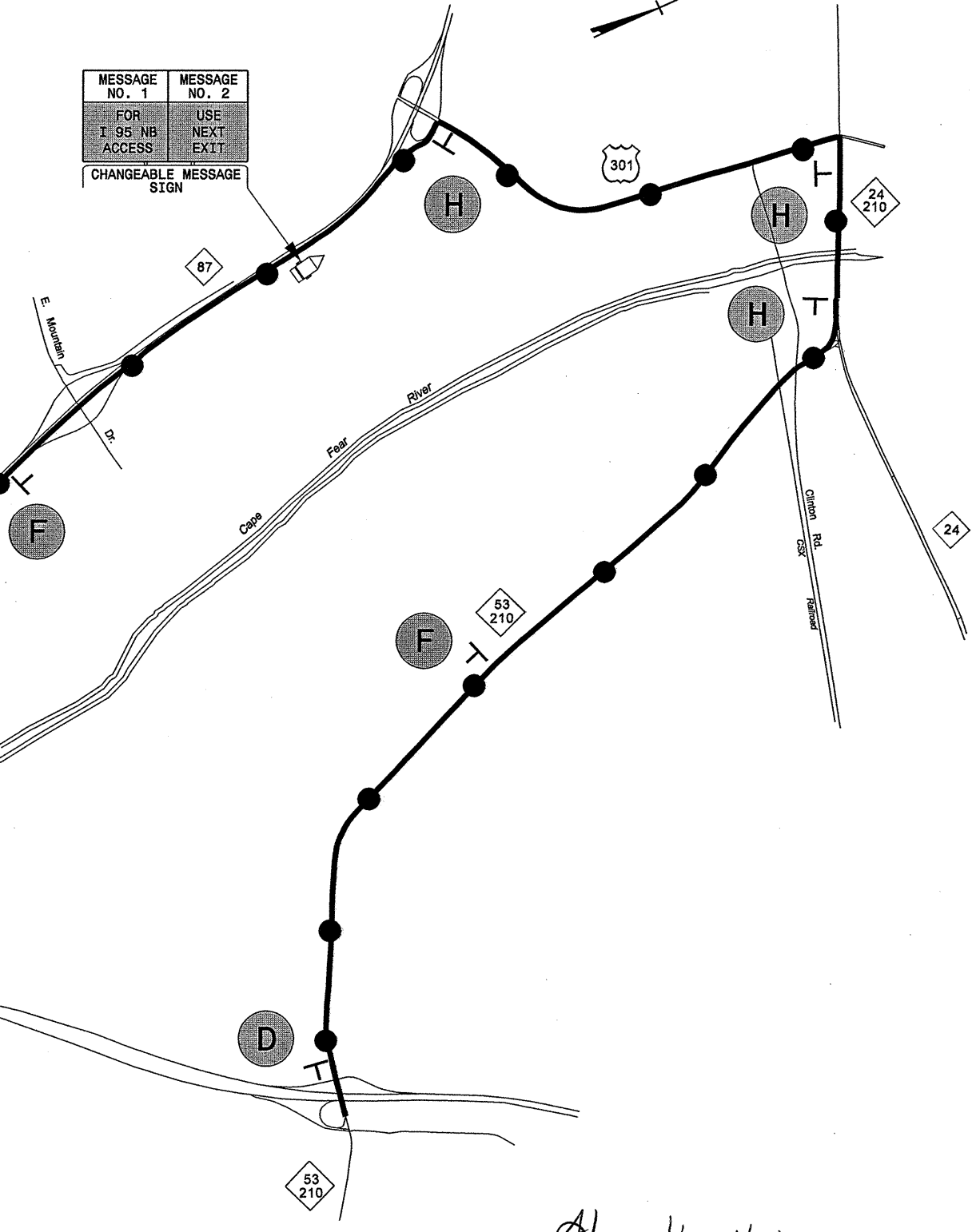
APPROVED: <i>Jessica D. Kuse</i> DATE: 4/13/07	SEGMENT 2A									
SEAL	SB I-95 CLOSURE DETOUR									
	SCALE: NONE	<table border="1"> <tr> <th colspan="2">REVISIONS</th> </tr> <tr> <td> </td> <td> </td> </tr> <tr> <td> </td> <td> </td> </tr> <tr> <td> </td> <td> </td> </tr> </table>	REVISIONS							
	REVISIONS									
DATE: 03/07										
DWG. BY: RMG										
DESIGN BY: RMG										
REVIEWED BY: JDK	CADD FILE									



MESSAGE NO. 1	MESSAGE NO. 2
I 95 NB ACCESS CLOSED	FOLLOW DETOUR
CHANGEABLE MESSAGE SIGN	

MESSAGE NO. 1	MESSAGE NO. 2
FOR I 95 NB ACCESS	USE NEXT EXIT
CHANGEABLE MESSAGE SIGN	

MESSAGE NO. 1	MESSAGE NO. 2
I 95 NB ACCESS AHEAD	CLOSED AHEAD
CHANGEABLE MESSAGE SIGN	



X SEE SHEET TCP-11 FOR SIGN / DEVICES LEGEND.

13-APR-2007 09:41 \\dot\dfs\00101\groups\wz\cccc\design\poupi\dgisqa\I-4917\I-4917.TC.TCP-07.dgn

APPROVED SEAL	DATE: 4/13/07		SEGMENT 2B NB I-95 CLOSURE DETOUR	
	SCALE: NONE DATE: 03/07 DWG. BY: RMG DESIGN BY: RMG REVIEWED BY: JDK			REVISIONS
CAD FILE				REVISIONS

MESSAGE NO. 1	MESSAGE NO. 2
FOR I 95 SB ACCESS	EXIT NC 87 SOUTH

CHANGEABLE MESSAGE SIGN

MESSAGE NO. 1	MESSAGE NO. 2
I 95 SB DETOUR	LEFT AT SIGNAL

CHANGEABLE MESSAGE SIGN

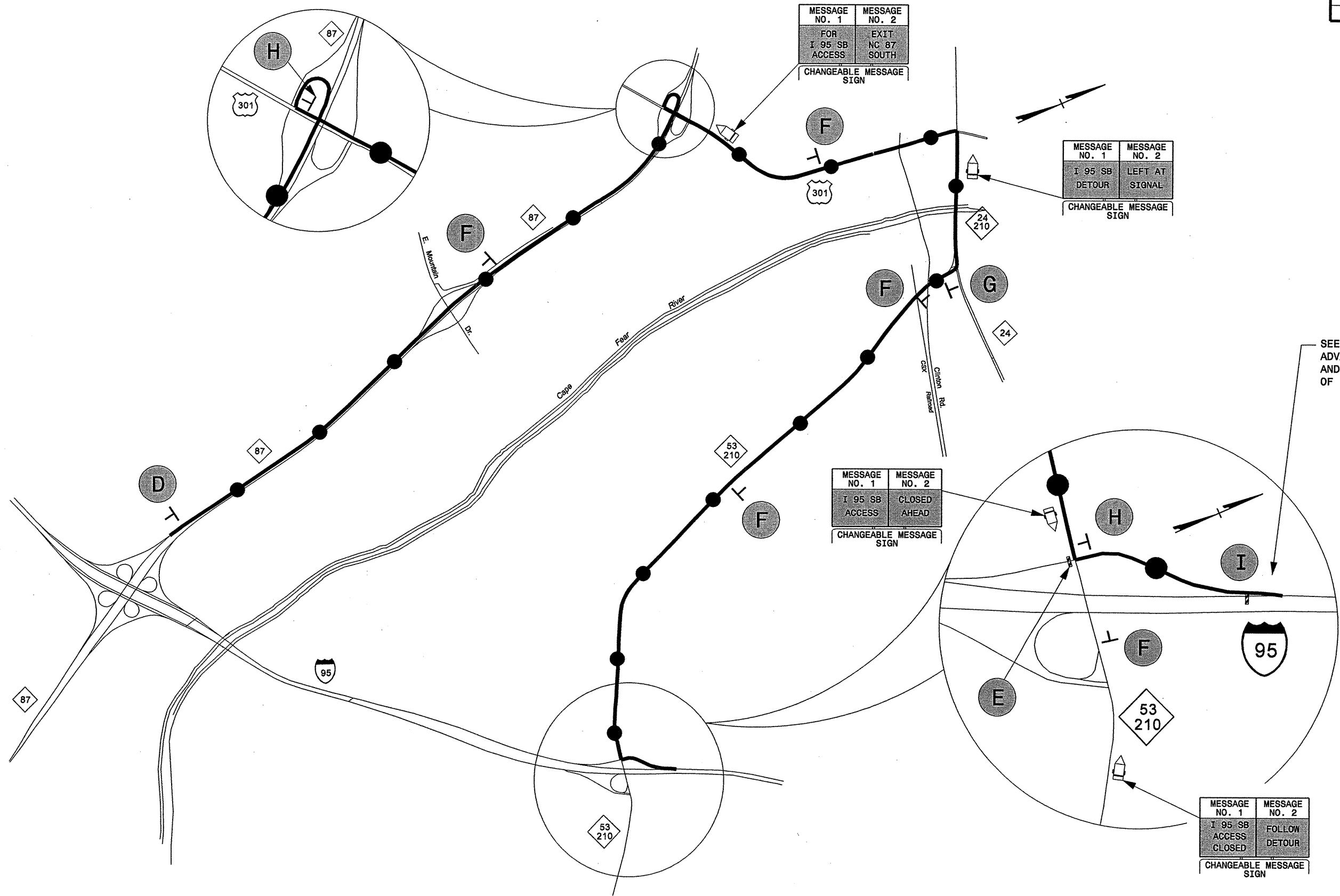
MESSAGE NO. 1	MESSAGE NO. 2
I 95 SB ACCESS	CLOSED AHEAD

CHANGEABLE MESSAGE SIGN


MESSAGE NO. 1	MESSAGE NO. 2
I 95 SB ACCESS CLOSED	FOLLOW DETOUR

CHANGEABLE MESSAGE SIGN


SEE SHEET TCP-9 FOR ADVANCE WARNING SIGNS AND DEVICES FOR CLOSURE OF I-95 LANES.




 DETOUR ROUTE

 SEE SHEET TCP-11 FOR SIGN / DEVICES LEGEND.

13-APR-2007 09:41 \\DOT\DF\BROD\01\GROUPS-WZTCCC\design\group\1-4917\1-4917.TC.TCP-08.dgn

APPROVED:  DATE: 4/13/07

SEAL



SEGMENT 2B
SB I-95 CLOSURE DETOUR

SCALE: NONE
DATE: 03/07
DWG. BY: RMG
DESIGN BY: RMG
REVIEWED BY: JDK

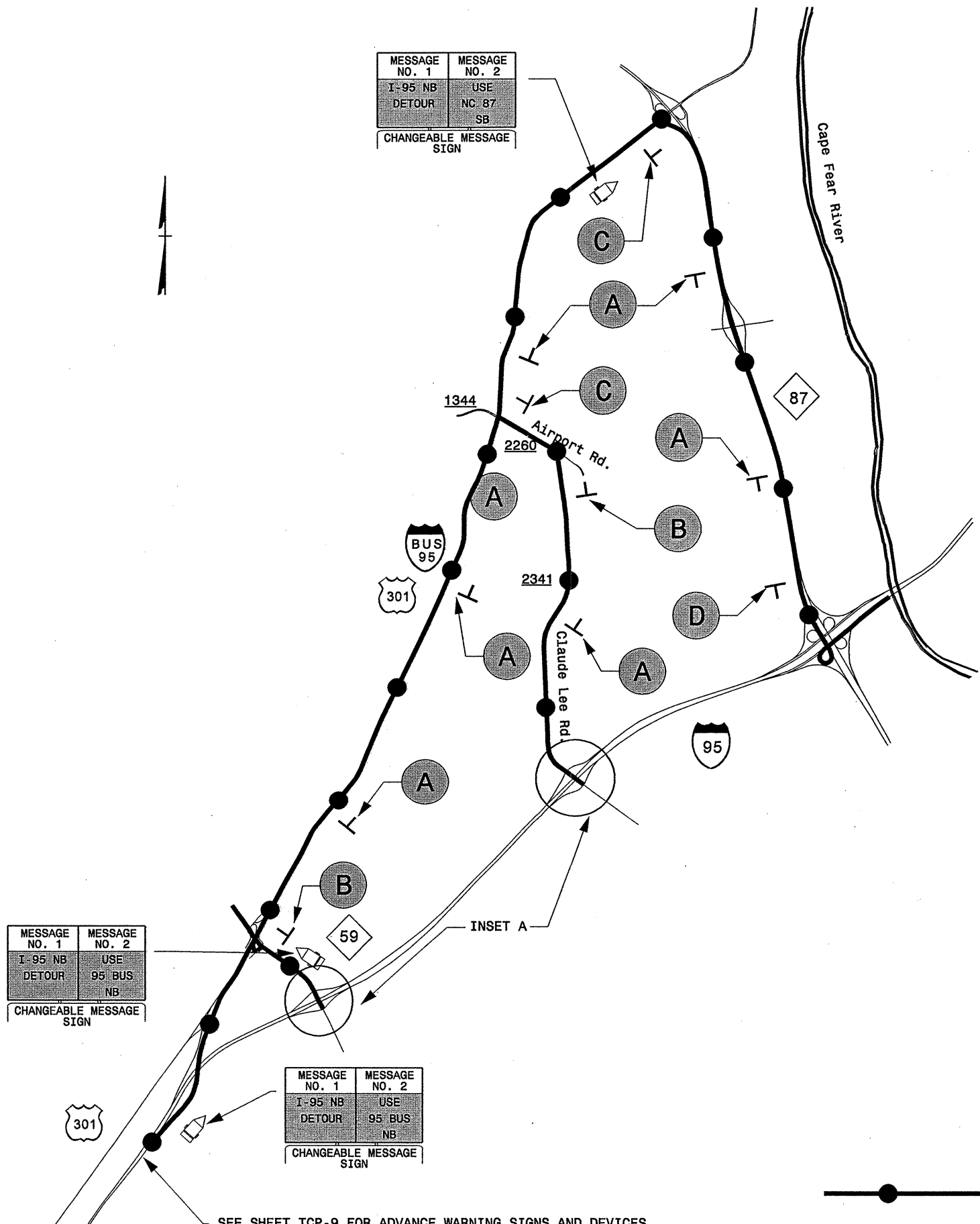


REVISIONS	

MESSAGE NO. 1	MESSAGE NO. 2
I-95 NB DETOUR	USE NC 87 SB
CHANGEABLE MESSAGE SIGN	

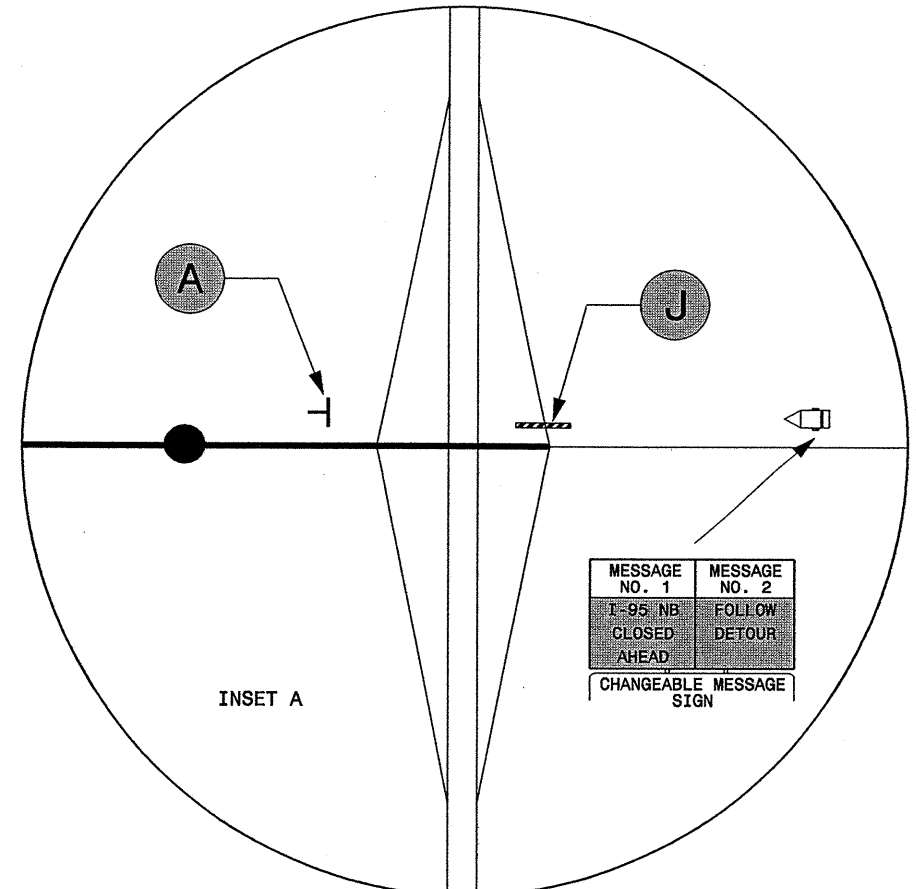
SEE SHEET TCP-9 FOR ADVANCE WARNING SIGNS AND DEVICES FOR CLOSURE OF I-95 LANES

PLACE DETOUR GUIDE SIGNS A MAXIMUM OF 2 MILES APART



MESSAGE NO. 1	MESSAGE NO. 2
I-95 NB DETOUR	USE 95 BUS NB
CHANGEABLE MESSAGE SIGN	

MESSAGE NO. 1	MESSAGE NO. 2
I-95 NB DETOUR	USE 95 BUS NB
CHANGEABLE MESSAGE SIGN	



MESSAGE NO. 1	MESSAGE NO. 2
I-95 NB CLOSED AHEAD	FOLLOW DETOUR
CHANGEABLE MESSAGE SIGN	

13-APR-2007 09:41 \\dot\dfsroot\ton\groups-wz\tccc\design\group\1-4917\1-4917-TC-TCP-09.dgn

SEE SHEET TCP-9 FOR ADVANCE WARNING SIGNS AND DEVICES FOR CLOSURE OF I-95 LANES

APPROVED: <i>[Signature]</i> DATE: 4/13/07	SEGMENT 3 NB I-95 CLOSURE DETOUR							
	SCALE: NONE							
	DATE: 04/07							
	DESIGN BY: DWB							
	REVIEWED BY: JDK							
		<table border="1"> <tr> <th colspan="2">REVISIONS</th> </tr> <tr> <td> </td> <td> </td> </tr> <tr> <td> </td> <td> </td> </tr> </table>	REVISIONS					
REVISIONS								

NOTES:

PLACE DETOUR GUIDE SIGNS A MAXIMUM OF 2 MILES APART

MESSAGE NO. 1	MESSAGE NO. 2
I-95 SB DETOUR	USE 95 BUS SB

CHANGEABLE MESSAGE SIGN

MESSAGE NO. 1	MESSAGE NO. 2
I-95 SB CLOSED AT NC 87	STAY ON 95 BUS SB

CHANGEABLE MESSAGE SIGN

MESSAGE NO. 1	MESSAGE NO. 2
I-95 SB ACCESS	CLOSED AHEAD

CHANGEABLE MESSAGE SIGN

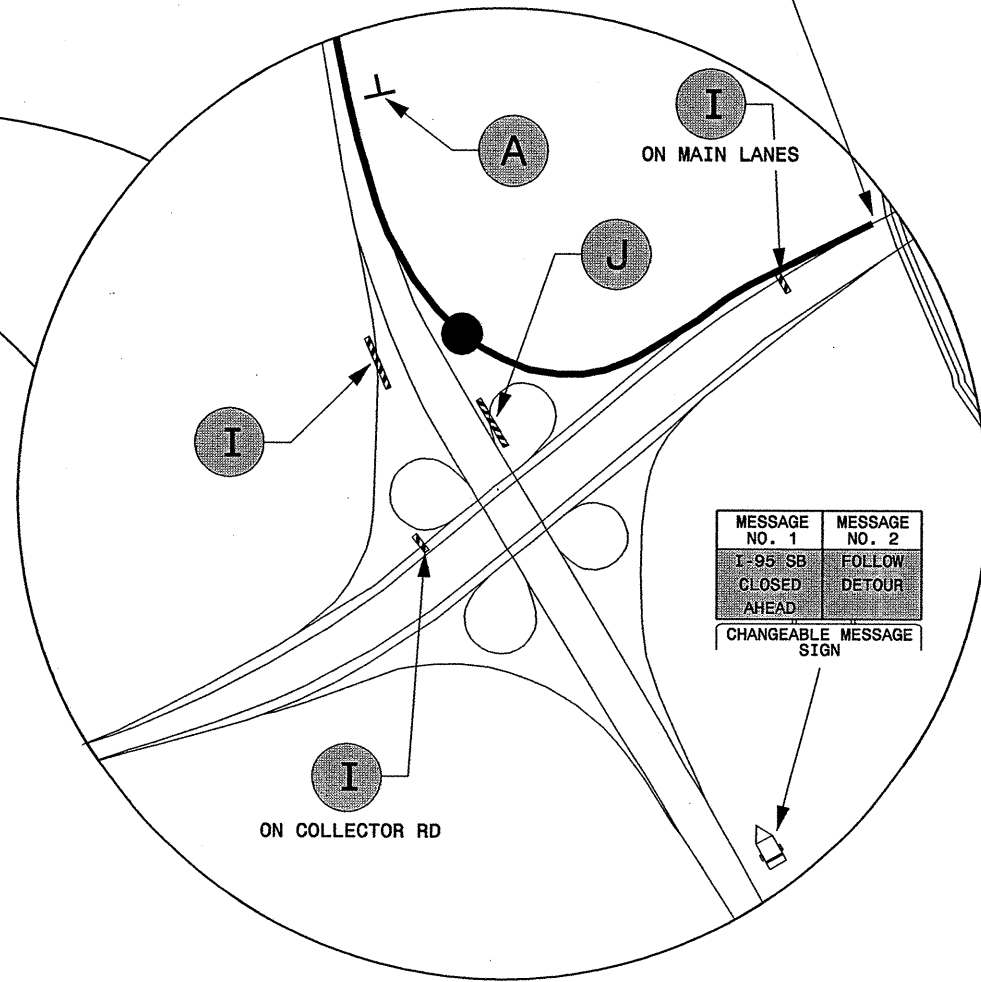
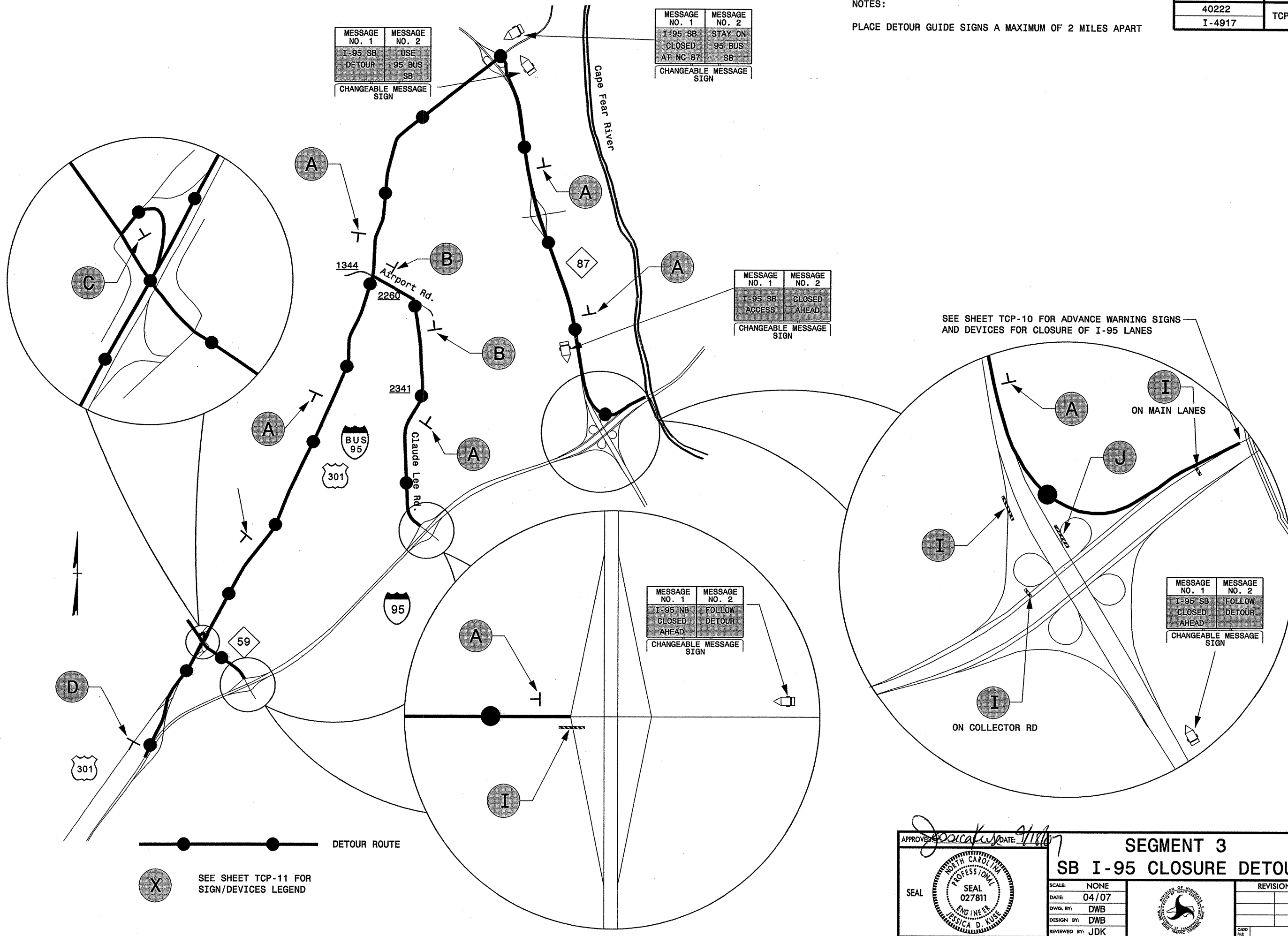
MESSAGE NO. 1	MESSAGE NO. 2
I-95 NB CLOSED AHEAD	FOLLOW DETOUR

CHANGEABLE MESSAGE SIGN

MESSAGE NO. 1	MESSAGE NO. 2
I-95 SB CLOSED AHEAD	FOLLOW DETOUR

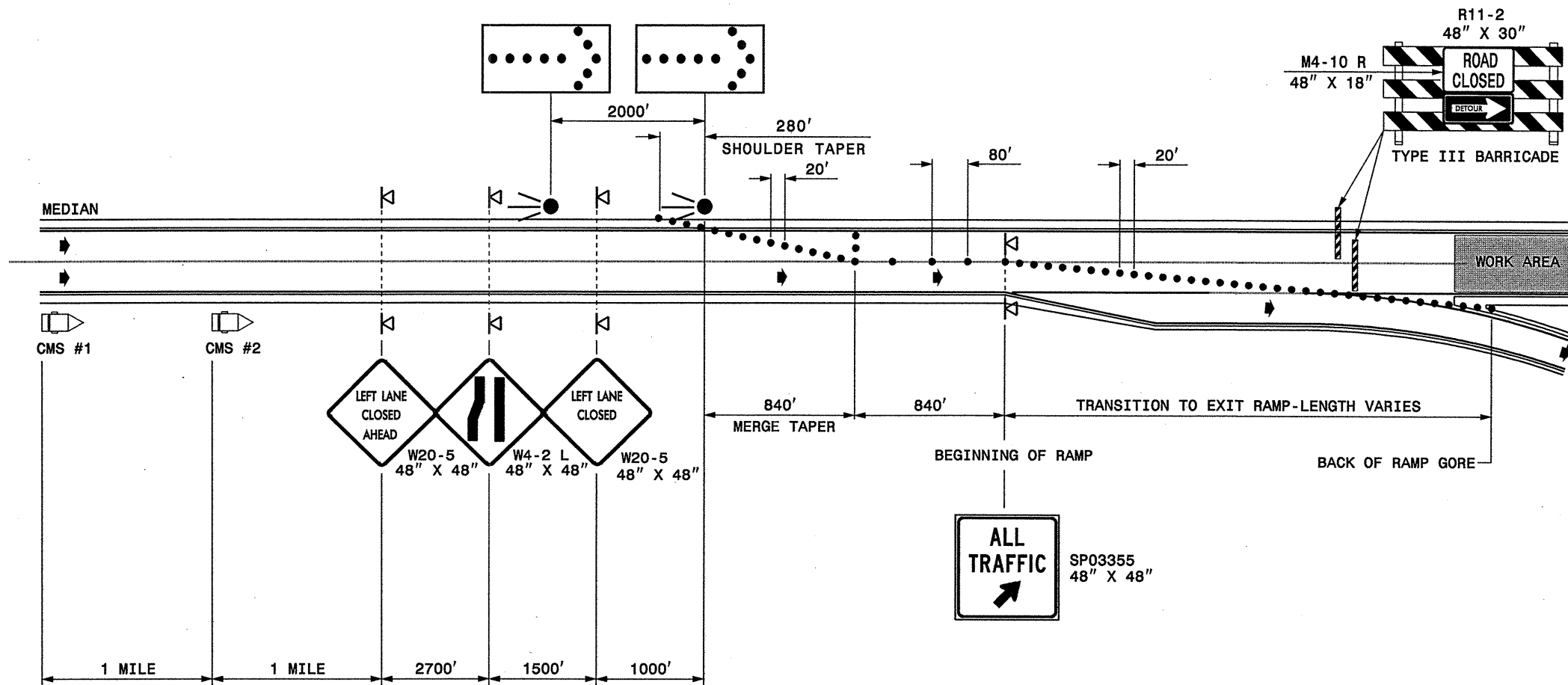
CHANGEABLE MESSAGE SIGN

SEE SHEET TCP-10 FOR ADVANCE WARNING SIGNS AND DEVICES FOR CLOSURE OF I-95 LANES



18-APR-2007 08:18 \\DOT\DFSR00101\GROUPS-WZTC\CC\design\group\gisqa\I-4917\I-4917.TC.TCP-08.dgn
imgart.rtf AT WZTC222591

APPROVED: <i>Jessica D. Kuse</i> DATE: <i>4/10/07</i>	SEGMENT 3							
	SB I-95 CLOSURE DETOUR							
	SCALE: NONE	DATE: 04/07						
DWG. BY: DWB	DESIGN BY: DWB	REVIEWED BY: JDK						
		<table border="1"> <tr> <th colspan="2">REVISIONS</th> </tr> <tr> <td> </td> <td> </td> </tr> <tr> <td> </td> <td> </td> </tr> </table>	REVISIONS					
REVISIONS								



CMS #1		CMS #2	
MESSAGE NO. 1	MESSAGE NO. 2	MESSAGE NO. 1	MESSAGE NO. 2
ROAD CLOSED 2 MILES	ALL TRAFFIC EXIT	ROAD CLOSED 1 MILE	ALL TRAFFIC EXIT
CHANGEABLE MESSAGE SIGN		CHANGEABLE MESSAGE SIGN	

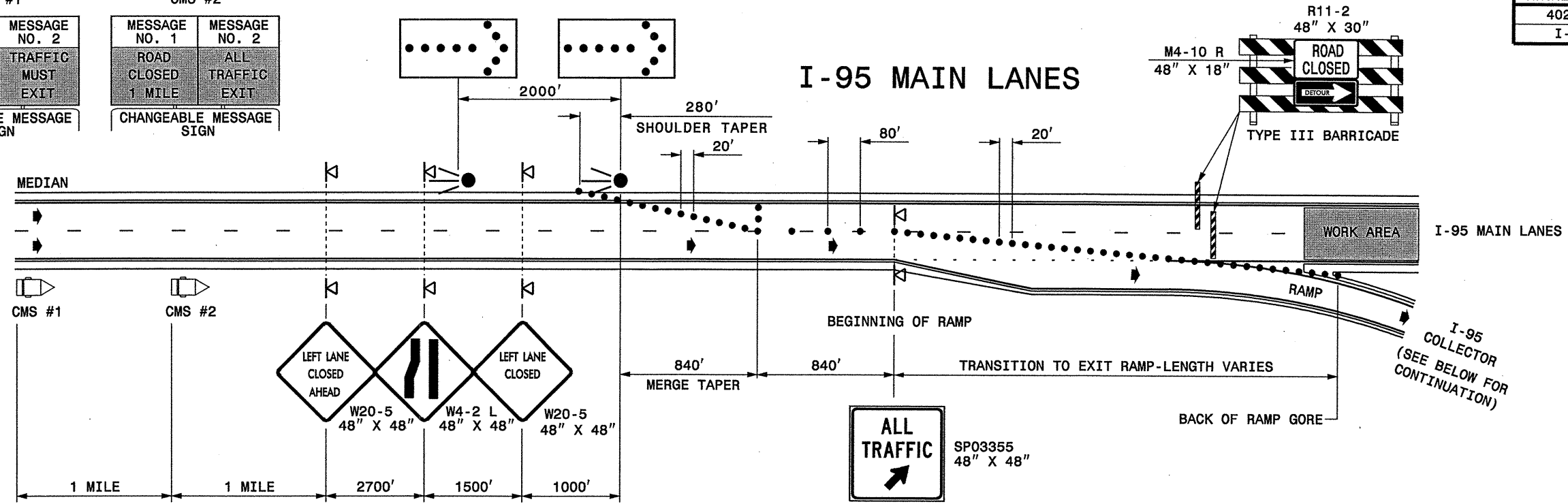
LEGEND	
	CHANGEABLE MESSAGE SIGN (CMS)
	FLASHING ARROW PANEL (TYPE C)
	DRUM
	PORTABLE SIGN
	DIRECTION OF TRAFFIC FLOW

- LOCAL NOTES**
- 1-IF NECESSARY USE FLAGGERS OR POLICE OFFICERS TO DIRECT TRAFFIC AT RAMP TERMINAL AS DIRECTED BY THE PLANS OR THE ENGINEER.
 - 2-IF RAMP TERMINAL IS SIGNALIZED, SIGNALS MAY BE PLACED IN FLASH MODE.
 - 3-PLACE CHANGEABLE MESSAGE SIGN ON THE OUTSIDE OF THE TRAVELWAY AS DIRECTED BY THE ENGINEER. IF IT IS ANTICIPATED THAT TRAFFIC WILL BACK UP TO WHERE CMS #1 IS LOCATED, PLACE CMS #1 APPROXIMATELY 1/2 MILE PRIOR TO ANTICIPATED BACKUPS AND CHANGE MESSAGE ACCORDINGLY. MONITOR BACKUPS, SUCH THAT, FOR FUTURE LANE CLOSURES THE SIGN IS PLACED APPROXIMATELY 1/2 MILE PRIOR TO WHERE TRAFFIC IS ANTICIPATED TO BACK UP.
 - 4-DISPLAY CHANGEABLE MESSAGE SIGN (CMS) MESSAGES AS SHOWN OR AS DEEMED NECESSARY BY THE ENGINEER. USE NO MORE THAN 2 MESSAGE DISPLAYS WITH ANY CYCLE UNLESS ADDITIONAL CHANGEABLE MESSAGE SIGNS ARE USED.
 - 5-ILLUMINATE EXIT POINTS AT EACH INTERCHANGE AREA DURING DETOUR OPERATION.

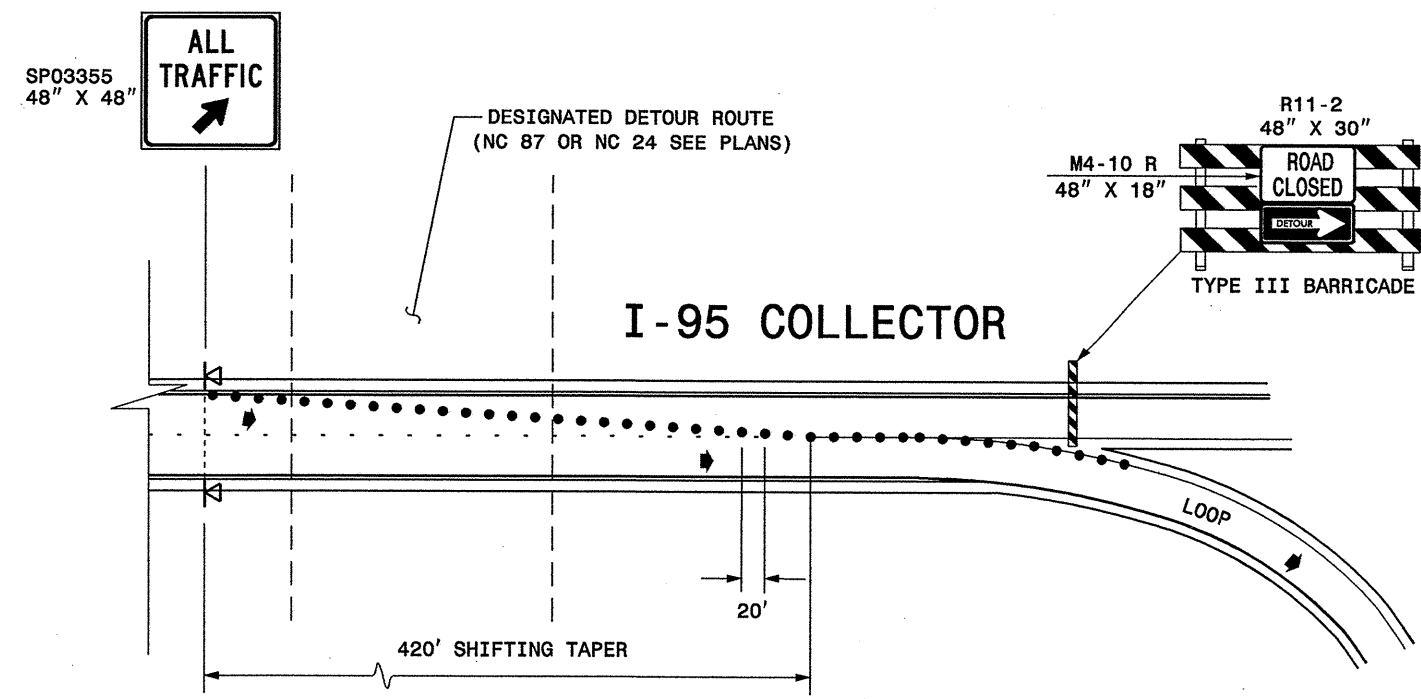
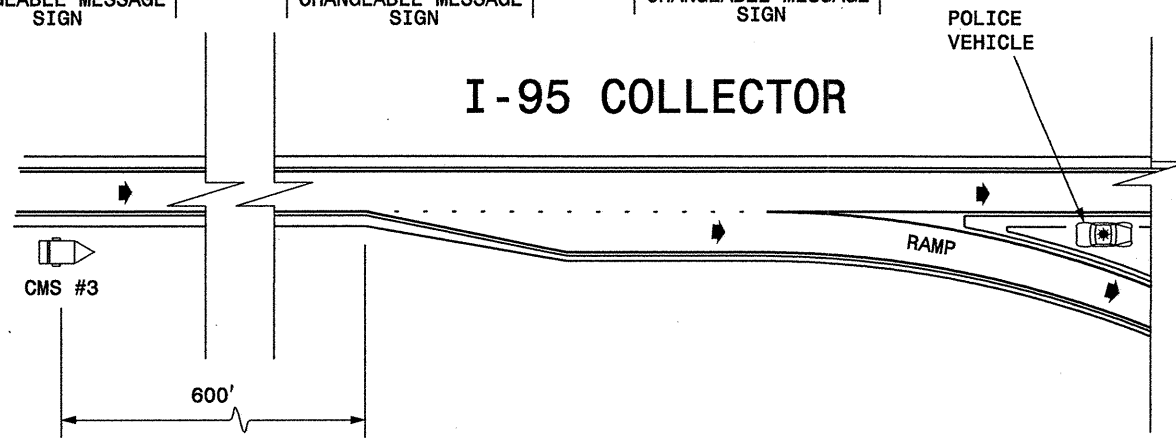
I3-APR-2007 09:40
 \\DOT\dfs\00701\GROUPS-WZ\TCCC\design\group\I-4917\I-4917.TCP-IL.dgn
 AT WZTC22251
 rm90r.rtt

APPROVED:	DATE: 11/3/07	I-95 CLOSURE	
SEAL 	SCALE: NONE		REVISIONS
	DATE: 03/07		
	DWG. BY: DWB		
	DESIGN BY: DWB		
	REVIEWED BY: JDK		

CMS #1		CMS #2	
MESSAGE NO. 1	MESSAGE NO. 2	MESSAGE NO. 1	MESSAGE NO. 2
ROAD CLOSED 2 MILES	TRAFFIC MUST EXIT	ROAD CLOSED 1 MILE	ALL TRAFFIC EXIT
CHANGEABLE MESSAGE SIGN		CHANGEABLE MESSAGE SIGN	



CMS #3		CMS #3		CMS #3	
MESSAGE FOR SEGMENT 2B (TCP-7)		MESSAGE FOR SEGMENT 2A (TCP-6)		MESSAGE FOR SEGMENT 3 (TCP-10)	
MESSAGE NO. 1	MESSAGE NO. 2	MESSAGE NO. 1	MESSAGE NO. 2	MESSAGE NO. 1	MESSAGE NO. 2
NC 87 SB NEXT EXIT	NC 87 NB EXIT AHEAD	NC 24 EB NEXT EXIT	NC 24 WB EXIT AHEAD	NC 87 NB NEXT EXIT	NC 87 SB EXIT AHEAD
CHANGEABLE MESSAGE SIGN		CHANGEABLE MESSAGE SIGN		CHANGEABLE MESSAGE SIGN	



LOCAL NOTES

- 1-IF NECESSARY USE FLAGGERS OR POLICE OFFICERS TO DIRECT TRAFFIC AT RAMP TERMINAL AS DIRECTED BY THE PLANS OR THE ENGINEER.
- 2-IF RAMP TERMINAL IS SIGNALIZED, SIGNALS MAY BE PLACED IN FLASH MODE.
- 3-PLACE CHANGEABLE MESSAGE SIGN ON THE OUTSIDE OF THE TRAVELWAY AS DIRECTED BY THE ENGINEER. IF IT IS ANTICIPATED THAT TRAFFIC WILL BACK UP TO WHERE CMS #1 IS LOCATED, PLACE CMS #1 APPROXIMATELY 1/2 MILE PRIOR TO ANTICIPATED BACKUPS AND CHANGE MESSAGE ACCORDINGLY. MONITOR BACKUPS, SUCH THAT, FOR FUTURE LANE CLOSURES THE SIGN IS PLACED APPROXIMATELY 1/2 MILE PRIOR TO WHERE TRAFFIC IS ANTICIPATED TO BACK UP.
- 4-DISPLAY CHANGEABLE MESSAGE SIGN (CMS) MESSAGES AS SHOWN OR AS DEEMED NECESSARY BY THE ENGINEER. USE NO MORE THAN 2 MESSAGE DISPLAYS WITH ANY CYCLE UNLESS ADDITIONAL CHANGEABLE MESSAGE SIGNS ARE USED.
- 5-ILLUMINATE EXIT POINTS AT EACH INTERCHANGE AREA DURING DETOUR OPERATION.

LEGEND

- ◻ CHANGEABLE MESSAGE SIGN (CMS)
- ◄ FLASHING ARROW PANEL (TYPE C)
- DRUM
- ◀ PORTABLE SIGN
- ➔ DIRECTION OF TRAFFIC FLOW

I-95 CLOSURE

APPROVED: *Jessica D. Kuse*

SEAL: *Jessica D. Kuse*

SCALE: NONE
DATE: 03/07
DWG. BY: DWB
DESIGN BY: DWB
REVIEWED BY: JDK

REVISIONS

13-APR-2007 09:40
 \\dot\dfsroot\groups\wztc\design\groups\4917\I-4917.TC.TCP.dgn
 AT WZTC2229
 mgarrrett

DETOUR M4-8
24" X 12"

SOUTH M3-3
24" X 12"



A

DETOUR M4-8
24" X 12"

SOUTH M3-3
24" X 12"



B

DETOUR M4-8
24" X 12"

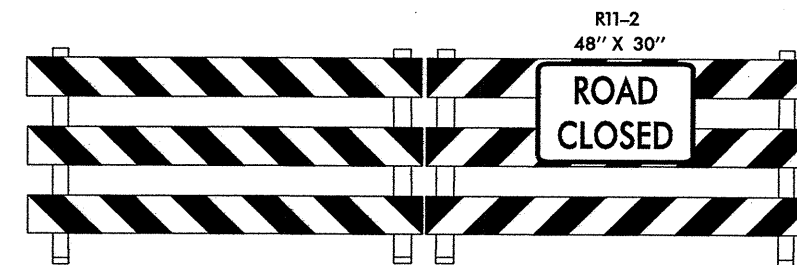
SOUTH M3-3
24" X 12"



C

END
DETOUR M4-8 A
24" X 18"

D



TYPE III BARRICADE(S)

DETOUR M4-8
24" X 12"

NORTH M3-1
24" X 12"



F

DETOUR M4-8
24" X 12"

NORTH M3-1
24" X 12"



G

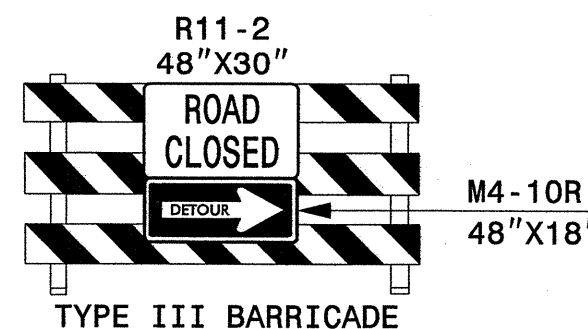
DETOUR M4-8
24" X 12"

NORTH M3-1
24" X 12"



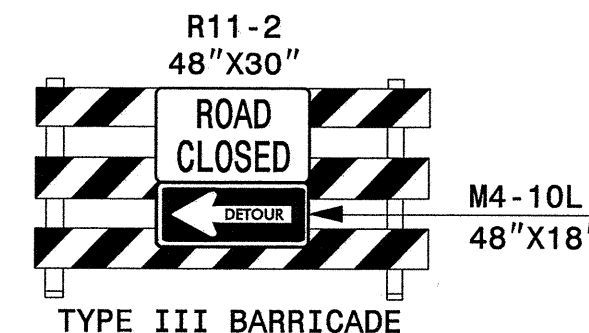
H

E



TYPE III BARRICADE

I

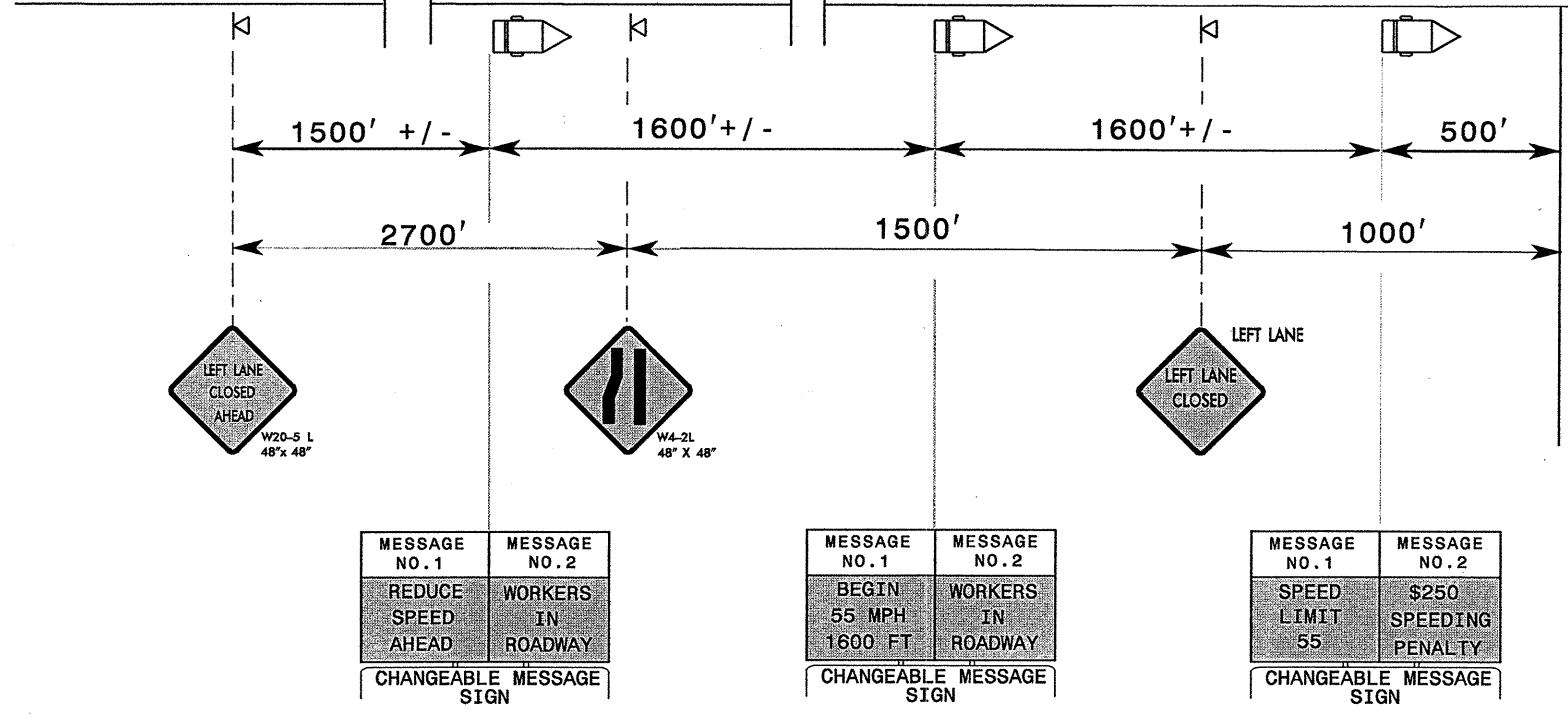
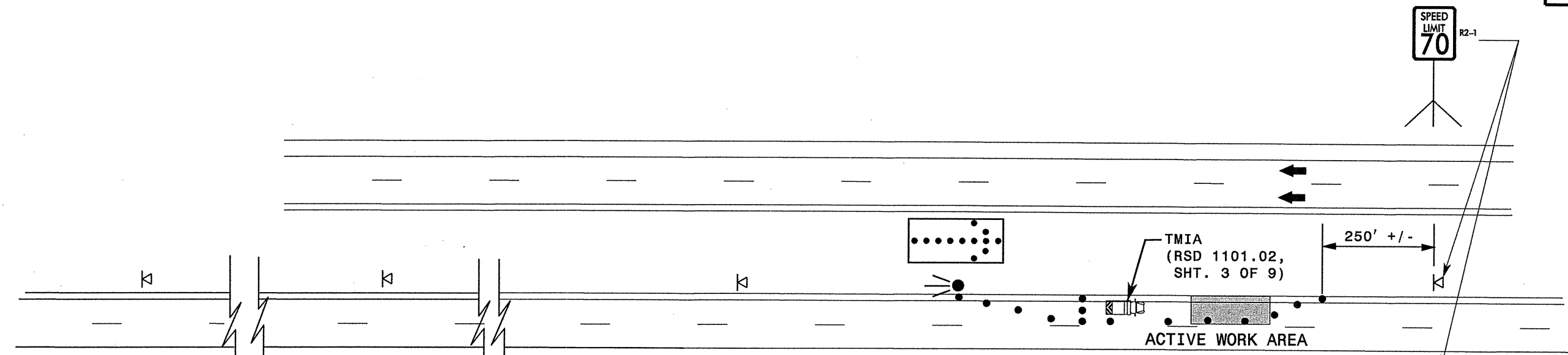


TYPE III BARRICADE

J

13-APR-2007 09:39
 \DOT\DFSROOT\GROUPS-WZTCC\design\group\pl\gisqa\I-4917\I-4917.TCP.J3.dgn
 rimgarrett AT WZTCC2229

APPROVED: <i>Jessica D. Kuse</i> DATE: 11/3/07	I-95 ROAD CLOSURE DETOUR SIGNS / DEVICES LEGEND	
	SCALE: NONE	
	DATE: 03/07	
	DWG. BY: RMG	
	DESIGN BY: RMG	
REVIEWED BY: JDK	REVISIONS	



MESSAGE NO. 1	MESSAGE NO. 2
REDUCE SPEED AHEAD	WORKERS IN ROADWAY

CHANGEABLE MESSAGE SIGN

MESSAGE NO. 1	MESSAGE NO. 2
BEGIN 55 MPH 1600 FT	WORKERS IN ROADWAY

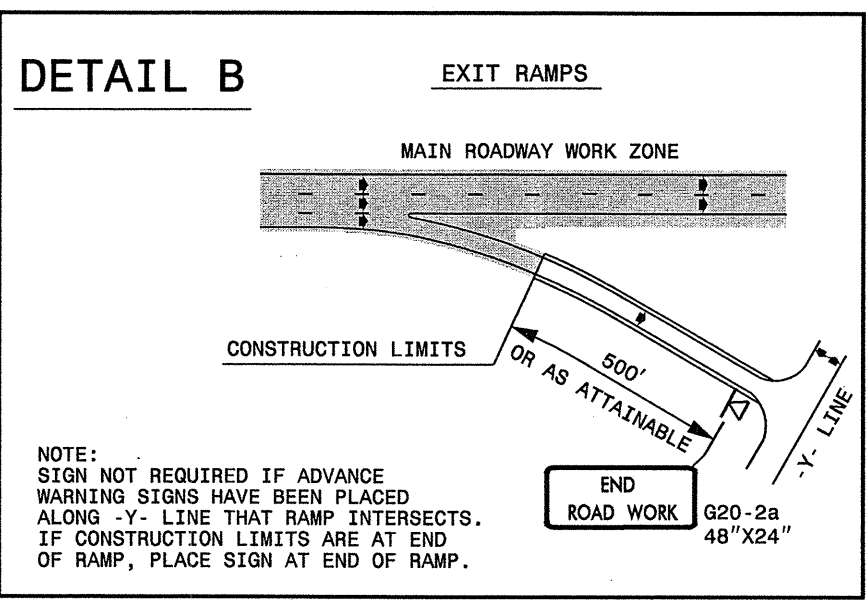
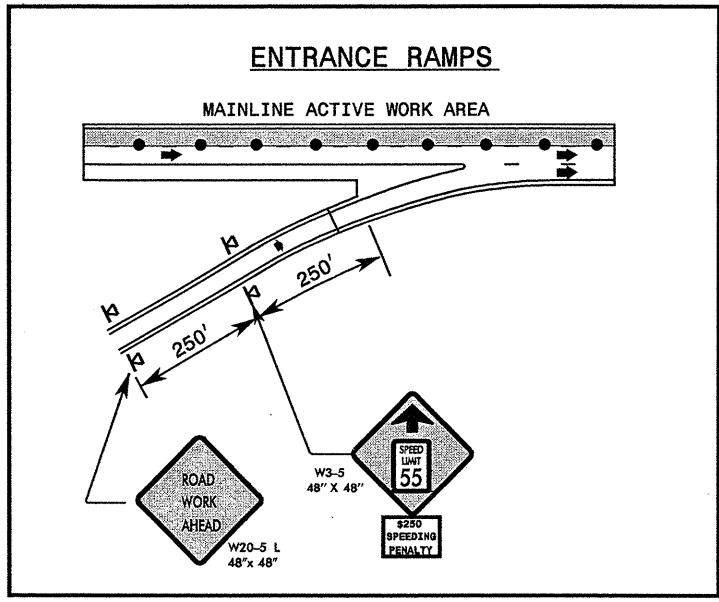
CHANGEABLE MESSAGE SIGN

MESSAGE NO. 1	MESSAGE NO. 2
SPEED LIMIT 55	\$250 SPEEDING PENALTY

CHANGEABLE MESSAGE SIGN

GENERAL NOTES

1. THIS DRAWING IS INTENDED TO SHOW THE CMS LOCATION AND MESSAGING REQUIRED FOR A "TEMPORARY SPEED LIMIT" REDUCTION ON A FREEWAY WHICH IS TO BE REDUCED FROM 70 MPH TO 55 MPH. REFER TO THE ROADWAY STANDARD DRAWING 1101.02 SHEET 3 OF 9 FOR ADDITIONAL LANE CLOSURE REQUIREMENTS AND GENERAL NOTES.
 2. EACH DIRECTION OF THE PROJECT IS TO BE EVALUATED FOR THE "TEMPORARY SPEED LIMIT" REDUCTION. THIS DRAWING INTENTIONALLY HAS 1 DIRECTION SIGNED AS A REMINDER TO CAREFULLY CONSIDER WHETHER BOTH DIRECTIONS OF THE PROJECT NEED TO HAVE THE SPEED LIMIT REDUCED.
 3. IN ADDITION, FOR ACTIVE WORK AREAS THAT EXCEED 1 MILE IN LENGTH, AN EVALUATION IS TO BE MADE TO DETERMINE IF ADDITIONAL CMS'S ARE NEEDED TO SUPPLEMENT THE INITIAL ONES. PORTABLE MOUNTED W3-5 SIGNS WITH SPEED PENALTY SIGNS ARE TO BE PLACED ALONG ENTRANCE RAMP LOCATED WITHIN THE ACTIVE WORK AREA.
 4. THE \$250 SPEEDING PENALTY APPLIES FOR ALL PROJECTS THAT QUALIFY FOR A "TEMPORARY SPEED LIMIT" REDUCTION.
 5. THE "TEMPORARY SPEED LIMIT" REDUCTION IS ONLY IN EFFECT WHEN WORKERS ARE PRESENT. THE SPEED LIMIT AND SPEED PENALTY MESSAGES ARE TO BE REMOVED AND THE SIGNS ARE TO BE TURNED OFF OR OTHER PERTINENT MESSAGING MAY BE DISPLAYED AT THE DIRECTION OF THE ENGINEER IN COORDINATION WITH THE WORK ZONE TRAFFIC CONTROL UNIT (919-250-4159). AT THE COMPLETION OF THE ACTIVITY, THE REGIONAL TRAFFIC ENGINEER SHALL BE NOTIFIED BY THE RESIDENT ENGINEER TO RESCIND THE ORDINANCE.
 6. WHEN "TEMPORARY SPEED LIMIT" REDUCTIONS ARE IN EFFECT, THE CONTRACTOR IS TO COVER ANY EXISTING SPEED LIMIT SIGNS LOCATED WITHIN THE ACTIVE WORK AREA THAT CONFLICT WITH THE "TEMPORARY SPEED LIMIT" REDUCTION.
 7. USE FLUORESCENT ORANGE SHEETING (TYPE VII OR HIGHER) ON ALL ADVANCED WORK ZONE SIGNS.
 8. DO NOT INSTALL ADVANCE WARNING SIGNS MORE THAN 3 DAYS PRIOR TO BEGINNING OF WORK.
 9. ALL SIGN SPACING DIMENSIONS ARE APPROXIMATE, FIELD ADJUST AS NECESSARY OR AS DIRECTED.
 10. USE PORTABLE WORK ZONE SIGNS ONLY WITH PORTABLE WORK ZONE SIGN STANDS SPECIFICALLY DESIGNED FOR ONE ANOTHER. PORTABLE WORK ZONE SIGNS MAY BE ROLL UP OR APPROVED COMPOSITE.
 11. PROVIDE PORTABLE WORK ZONE SIGN STANDS, PORTABLE SIGNS AND SIGN SHEETING WHICH ARE LISTED ON THE NORTH CAROLINA DEPARTMENT OF TRANSPORTATION'S APPROVED PRODUCT LIST OR ACCEPTED AS TRAFFIC QUALIFIED BY THE TRAFFIC CONTROL UNIT.
- ** TWO-WAY UNDIVIDED ADVANCE WARNING SIGN CONFIGURATION MAY BE USED ON MULTI-LANE FACILITIES WHERE CONDITIONS LIMIT THE USE OF DUAL MOUNTED SIGNS AS DETERMINED BY THE ENGINEER.



APPROVED: *[Signature]* DATE: 4/30/07

"TEMPORARY SPEED LIMIT" REDUCTION WITH PORTABLE CMS'S- ABOVE 10 MPH

SCALE: NONE	REVISIONS
DATE: 02/15/07	
DWG. BY: JSK	
DESIGN BY: JSK	
REVIEWED BY: JSK	

SEAL: NORTH CAROLINA PROFESSIONAL ENGINEER JOHN S. KITE, JR. SEAL 022104

30-APR-2007 13:52
 \\DOT\DFSR00701\GROUPS-WZTCCC\design\group\ndglsqa\miscellaneous no project folder available\I-4917\I-4917-TC-TCP-12.dgn
 rmdgrrt AT WZTCCC22291

SIGN NUMBER: SP-03350 TYPE: D QUANTITY: 1 SIGN WIDTH: 4'-0" HEIGHT: 2'-6" TOTAL AREA: 10.0 Sq.Ft. BORDER TYPE: FLUSH RECESS: 0.4" WIDTH: 0.5" RADIUS: 1.5" NO. Z BARS: N/A LENGTH: N/A	BACKG COLOR: White COPY COLOR: Black SYMBOL X Y WID HT	DESIGN BY: CL DOWNEY PROJECT ID: CHECKED BY: DIV: DIV STD #: REGULATORY DATE: Aug 18, 2003
---	--	---

SP 03350

USE NOTES: 2,4
 1. Legend and border shall be direct applied Type III reflective sheeting.
 2. Legend and border shall be direct applied non-reflective sheeting.
 3. Shields shall be Type III reflective sheeting on 0.032" (0.8mm) aluminum and demountable.
 4. Background shall be Type III reflective sheeting.
 5. Background shall be Type I reflective sheeting.
 6. Center arrow(s) vertically on sign.
 7. Bottom panel shall be yellow Type III sheeting. Legend shall be direct applied black non-reflective sheeting. Yellow panel is:

LETTER POSITIONS

Letter spacings are to start of next letter

Series/Size	Text Length
15.1	17.8
9.1	31.8
11.9	28

Spacing Factor is 1 unless specified otherwise

SIGN NUMBER: SP07008 TYPE: D QUANTITY: 1 SIGN WIDTH: 48" HEIGHT: 30" TOTAL AREA: 10.0 Sq.Ft. BORDER TYPE: FLUSH RECESS: 0.5" WIDTH: 0.75" RADIUS: 1.88" NO. Z BARS: LENGTH:	BACKG COLOR: White COPY COLOR: Black SYMBOL X Y WID HT	DESIGN BY: R. HENNEIN PROJECT ID: N/A CHECKED BY: DIV: N/A STD #: N/A DATE: Jan 12, 2007
--	--	---

SP 07008

USE NOTES:
 1. Legend and border shall be direct applied Type III reflective sheeting.
 2. Background shall be Type III reflective sheeting.

LETTER POSITIONS

Letter spacings are to start of next letter

Series/Size	Text Length
6.9	34.3
8.1	31.7
9.9	28.2

Spacing Factor is 1 unless specified otherwise

SP 03353

SIGN NUMBER: SP-03353 TYPE: A QUANTITY: 1 SIGN WIDTH: 4'-0" HEIGHT: 4'-0" TOTAL AREA: 16.0 Sq.Ft. BORDER TYPE: FLUSH RECESS: 0.59" WIDTH: 0.75" RADIUS: 1.38" NO. Z BARS: N/A LENGTH: N/A	BACKG COLOR: Fluorescent Orange COPY COLOR: Black SYMBOL X Y WID HT	DESIGN BY: CL DOWNEY PROJECT ID: ALL PROJECTS CHECKED BY: CHECKED DIV: DIV STD #: W20-1 DATE: Aug 20, 2003
--	---	---

BORDER
R=1.38"
TH=0.75"
IN=0.59"

USE NOTES: 2, 4
 1. Legend and border shall be direct applied Type VII reflective sheeting.
 2. Legend and border shall be direct applied non-reflective sheeting.
 3. Shields shall be Type VII reflective sheeting on 0.032" (0.8mm) aluminum and demountable.
 4. Background shall be Type VII reflective sheeting.
 5. Background shall be Type I reflective sheeting.
 6. Center arrow(s) vertically on sign.
 7. Bottom panel shall be yellow Type III sheeting. Legend shall be direct applied black non-reflective sheeting. Yellow panel is:

LETTER POSITIONS

Letter spacings are to start of next letter

Series/Size	Text Length
22.4	21.6
23.4	19.8
22.6	21.2

Spacing Factor is 1 unless specified otherwise

APPROVED: *J. J. [Signature]* 1/13/07

SIGN DESIGNS

SCALE: NONE
 DATE: 02/07
 DWG. BY: DWB
 DESIGN BY: DWB
 REVIEWED BY: JDK

SEAL: [Professional Engineer Seal for Jessica D. Kuse, State of North Carolina, License No. 027811]

REVISIONS

13-APR-2007 09:38
 \\001\dfs\root\01\groups-wz\000\design\group\dl\sqc\1-4917\1-4917-TC-13-15.dgn
 pmgarr@tt AT WZTC22283