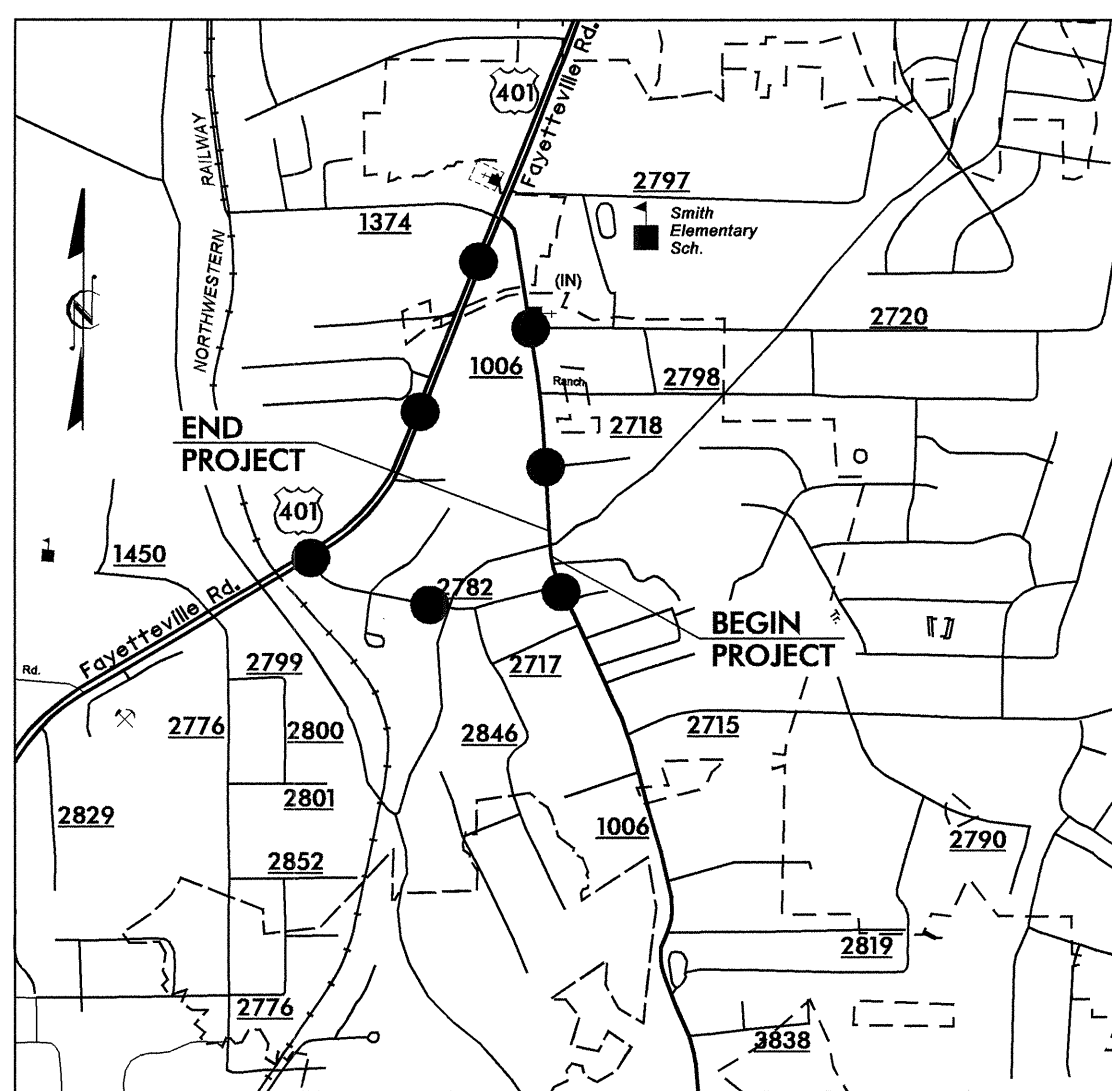


STATE OF NORTH CAROLINA
DIVISION OF HIGHWAYS

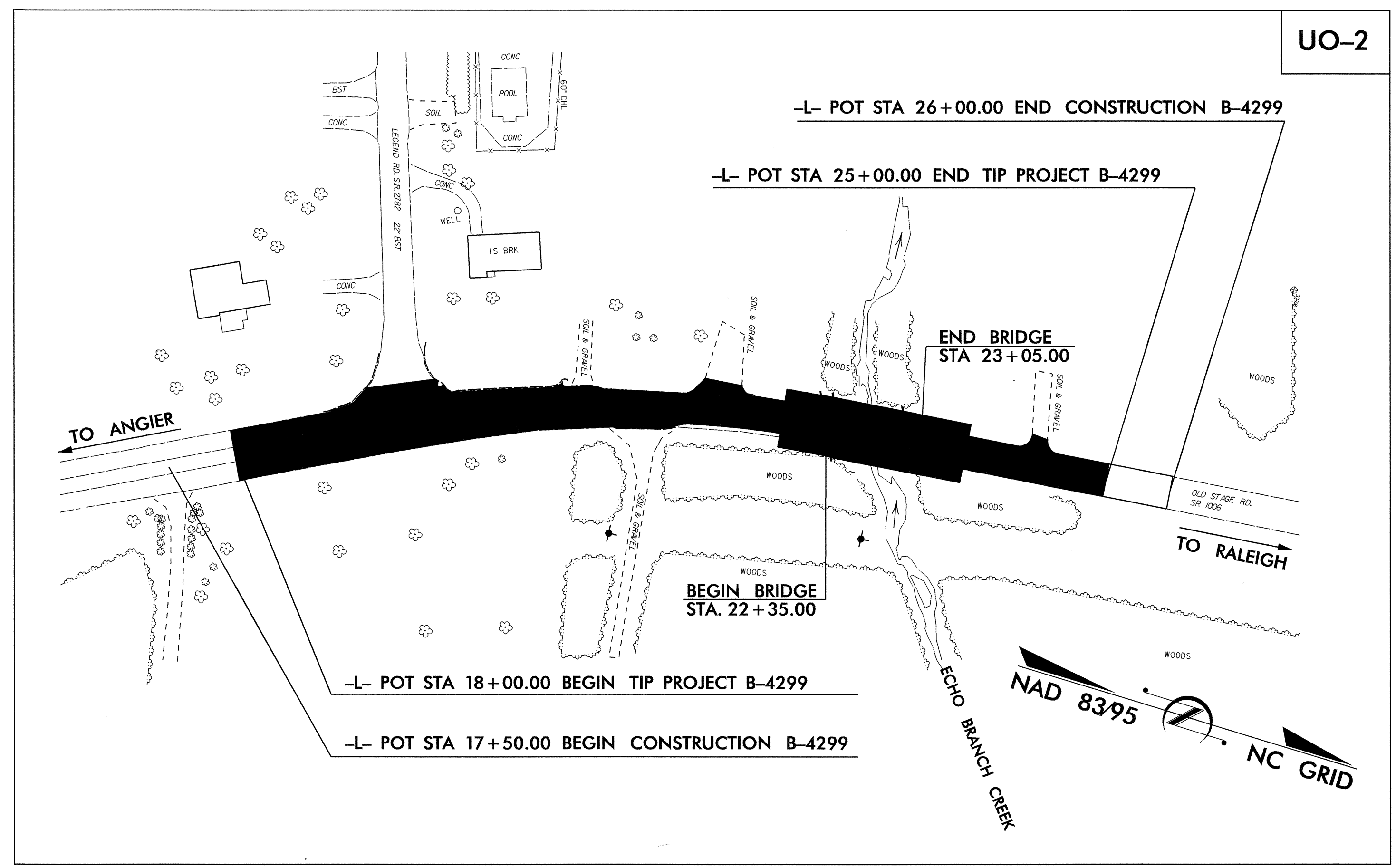
**UTILITY BY OTHERS PLANS
WAKE COUNTY**

LOCATION: BRIDGE NO. 255 OVER ECHO BRANCH CREEK ON SR 1006

TYPE OF WORK: UTILITIES BY OTHERS

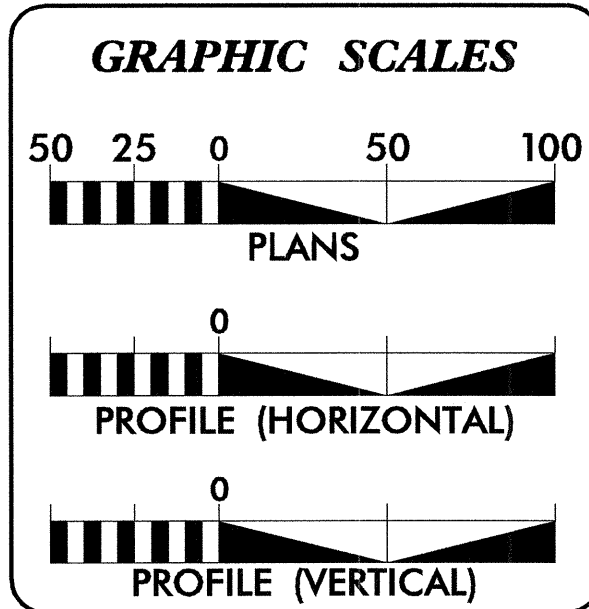


●●●●● DENOTES OFFSITE DETOUR
VICINITY MAP



TIP PROJECT: B-4299

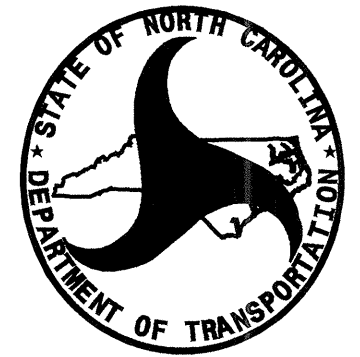
CONTRACT: C201446



SHEET NO.	DESCRIPTION
UO-1	TITLE SHEET
UO-2	UTILITY BY OTHERS PLAN SHEET

UTILITY OWNERS ON PROJECT

- PROGRESS ENERGY - POWER
- BELL SOUTH - TELEPHONE
- TIME WARNER - CATV



PREPARED IN THE OFFICE OF:
**DIVISION OF HIGHWAYS
DESIGN SERVICES
UTILITY SECTION**

1591 MAIL SERVICES CENTER
RALEIGH, NC 27699-1591
PHONE (919) 250-4128
FAX (919) 250-4119

Roger Worthington, P.E. UTILITIES SECTION ENGINEER
R. B. WILKINS, P.E. UTILITIES SQUAD LEADER PROJECT ENGINEER
MICHAEL R. BRIGHT UTILITIES PROJECT DESIGNER

28-MAR-2006 08:55
r:\u\Filifiles\ydy\ut\p\g\1\4299_ut_title_uol_psh.dgn
mbright AT PS22287

