

TIP PROJECT: B-4299

STATE OF NORTH CAROLINA
DIVISION OF HIGHWAYS

PLAN FOR PROPOSED
HIGHWAY EROSION CONTROL

WAKE COUNTY

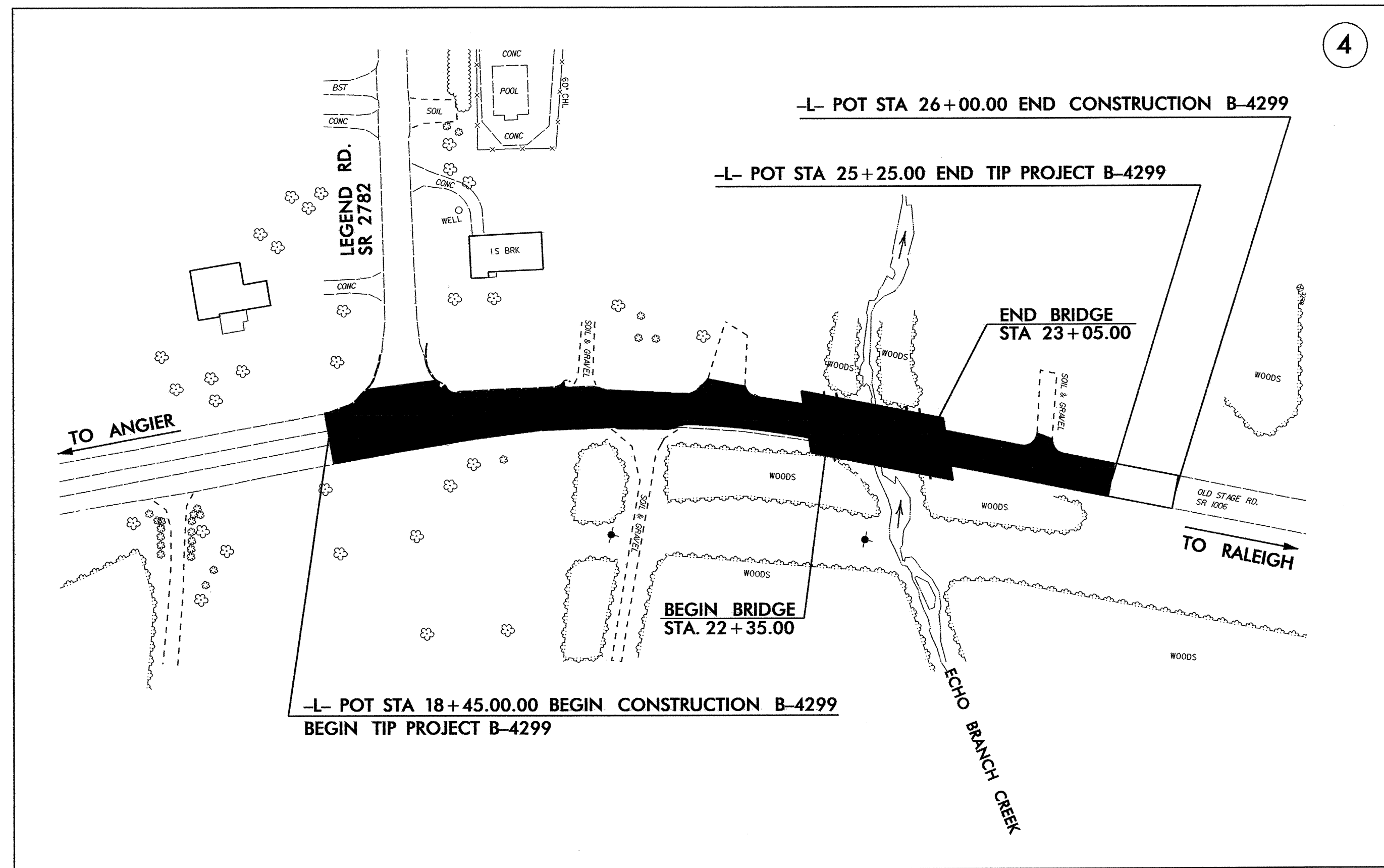
**LOCATION: BRIDGE NO. 255 OVER ECHO BRANCH CREEK
ON SR 1006**

**TYPE OF WORK: GRADING, PAVING, DRAINAGE AND
STRUCTURE**

STATE	STATE PROJECT REFERENCE NO.	SHEET NO.	TOTAL SHEETS
N.C.	B-4299	EC-1	
STATE PROJ. NO.	F.A. PROJ. NO.	DESCRIPTION	

EROSION AND SEDIMENT CONTROL MEASURES

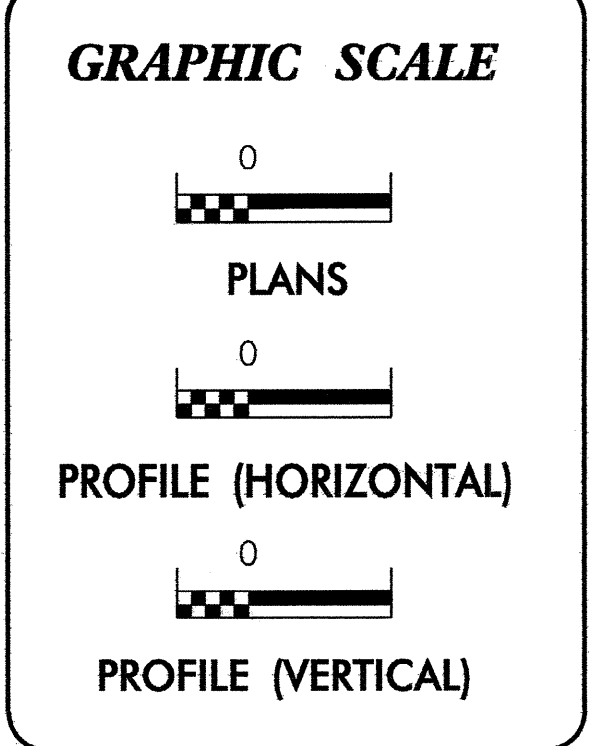
Std. #	Description	Symbol
	Streambank Reforestation.....	
1630.03	Temporary Silt Ditch.....	
1630.05	Temporary Diversion.....	
1605.01	Temporary Silt Fence.....	
1606.01	Special Sediment Control Fence.....	
1622.01	Temporary Berms and Slope Drains.....	
1630.01	Riser Basin.....	
1630.02	Silt Basin Type B.....	
1633.01	Temporary Rock Silt Check Type-A.....	
	Temporary Rock Silt Check Type-B.....	
1634.01	Temporary Rock Sediment Dam Type-A.....	
1634.02	Temporary Rock Sediment Dam Type-B.....	
1635.01	Rock Pipe Inlet Sediment Trap Type-A.....	
1635.02	Rock Pipe Inlet Sediment Trap Type-B.....	
1630.04	Stilling Basin.....	
	Rock Inlet Sediment Trap:	
1632.01	Type A.....	
1632.02	Type B.....	
1632.03	Type C.....	
	Skimmer Basin.....	
	Tiered Skimmer Basin.....	



**THIS PROJECT CONTAINS
EROSION CONTROL PLANS
FOR CLEARING AND
GRUBBING PHASE OF
CONSTRUCTION.**

**THIS PROJECT HAS
BEEN DESIGNED TO
SENSITIVE WATERSHED
STANDARDS.**

**ENVIRONMENTALLY
SENSITIVE AREA(S) EXIST
ON THIS PROJECT**
*Refer To E. C. Special Provisions
for Special Considerations.*



ROADSIDE ENVIRONMENTAL UNIT
DIVISION OF HIGHWAYS
STATE OF NORTH CAROLINA

Prepared In the Office of:
ROADSIDE ENVIRONMENTAL UNIT
1 South Wilmington St.
Raleigh, NC 27611
2006 STANDARD SPECIFICATIONS

Roadway Standard Drawings

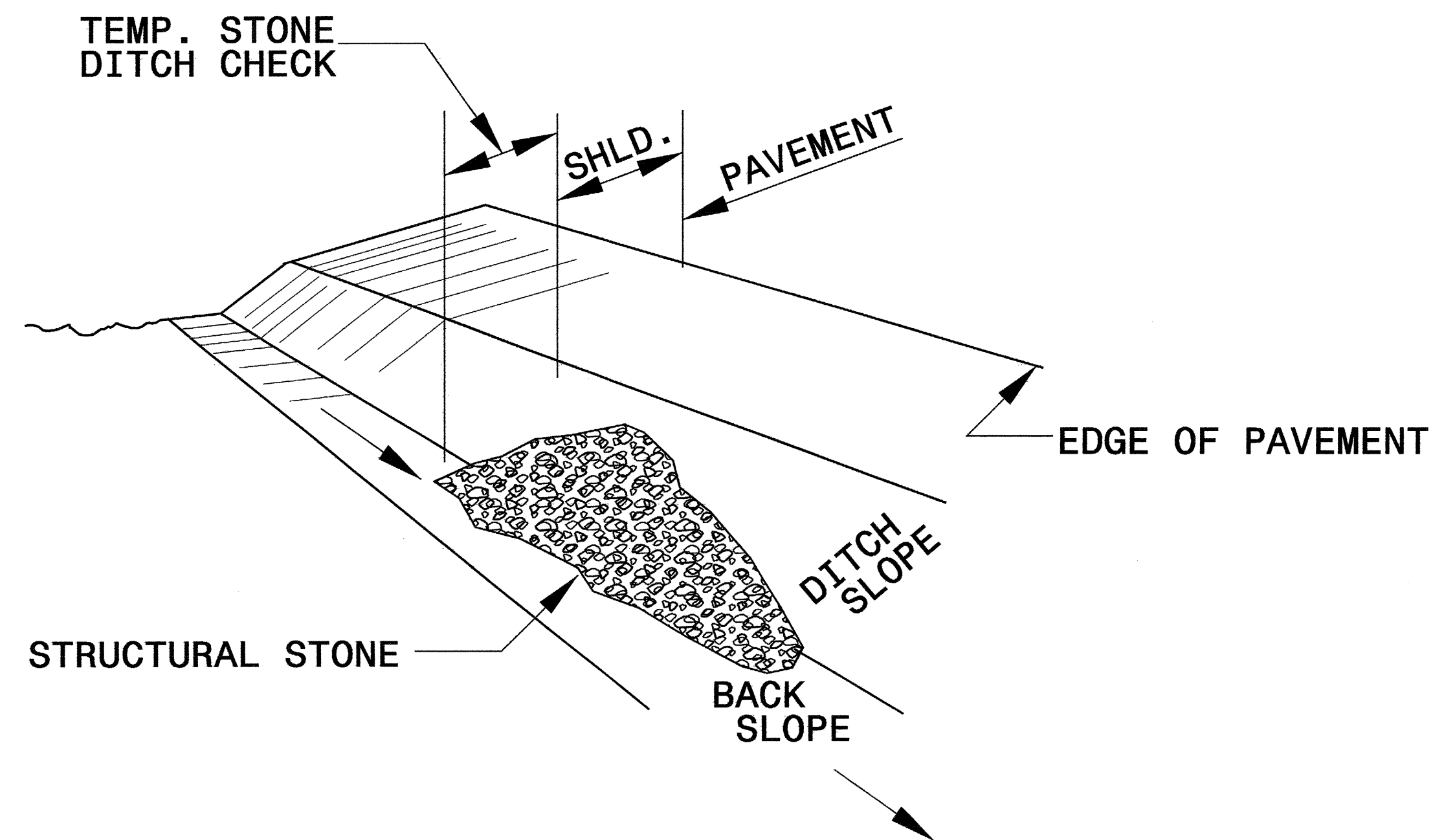
The following roadway english standards as appear in "Roadway Standard Drawings"- Roadway Design Unit - N. C. Department of Transportation - Raleigh, N. C., dated July 18, 2006 and the latest revision thereto are applicable to this project and by reference hereby are considered a part of these plans.

1605.01 Temporary Silt Fence	1632.01 Rock Inlet Sediment Trap Type A
1607.01 Gravel Construction Entrance	1632.02 Rock Inlet Sediment Trap Type B
1622.01 Temporary Berms and Slope Drains	1633.01 Temporary Rock Silt Check Type A
1630.02 Silt Basin Type B	1634.02 Temporary Rock Sediment Dam Type B

05-14N-2007 1000
s:\projects\61614\2007\roadside\environmental\design\B4299_da_tah.dgn
11/15/07 11:21:43 AM

PROJECT REFERENCE NO. B-4299	SHEET NO. EC-2
RW SHEET NO.	
ROADWAY DESIGN ENGINEER	HYDRAULICS ENGINEER

TEMPORARY ROCK SILT CHECK TYPE 'B' DETAIL

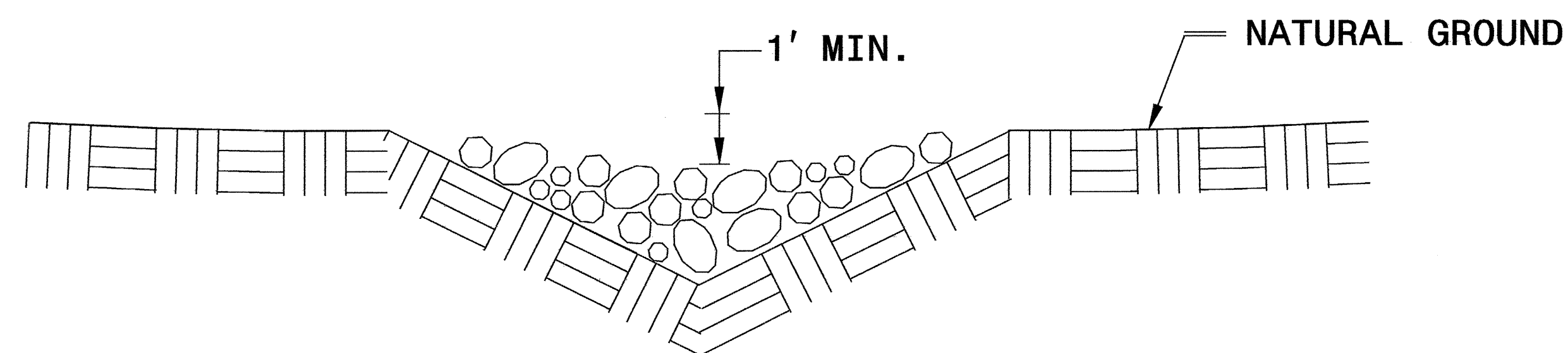


ISOMETRIC VIEW

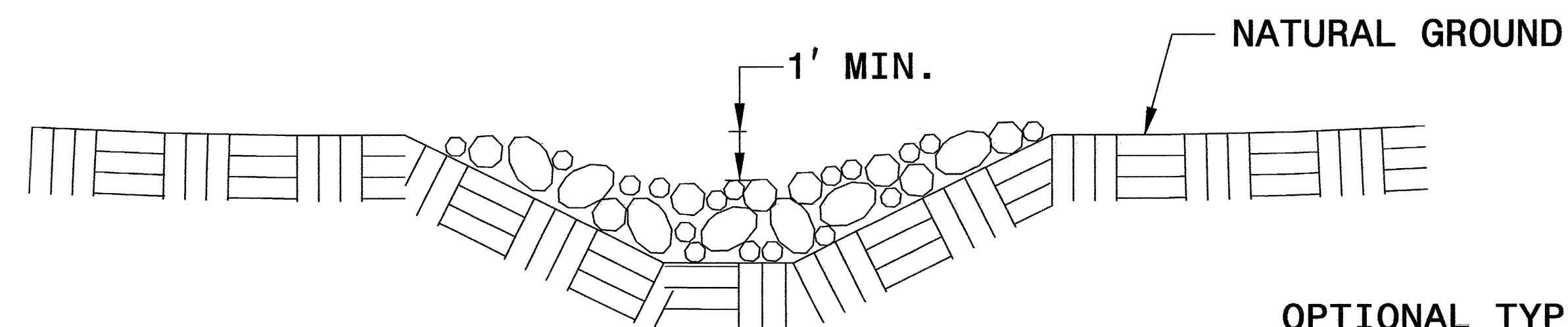
NOTES:

USE CLASS 'B' EROSION CONTROL STONE FOR STRUCTURAL STONE.

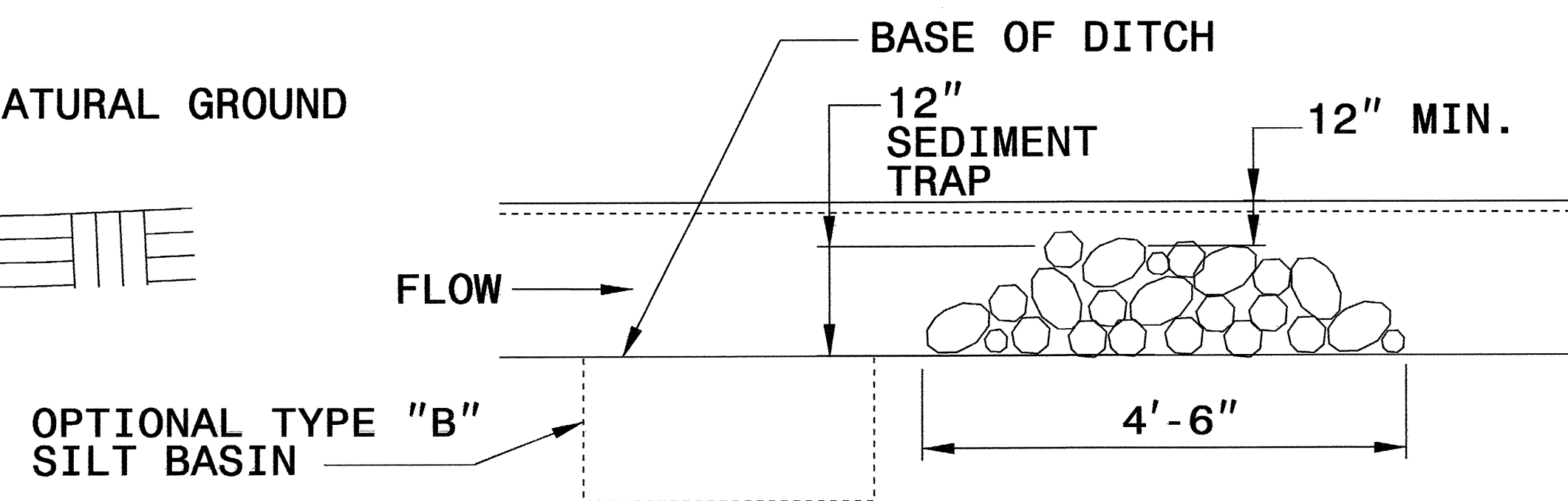
THE ENGINEER MAY DIRECT THE OPTION OF CLASS "A" STONE FOR SITES HAVING LESS THAN ONE (1) ACRE DRAINAGE AREA AND A DITCH GRADE LESS THAN 3%.



CROSS SECTION VEE DITCH



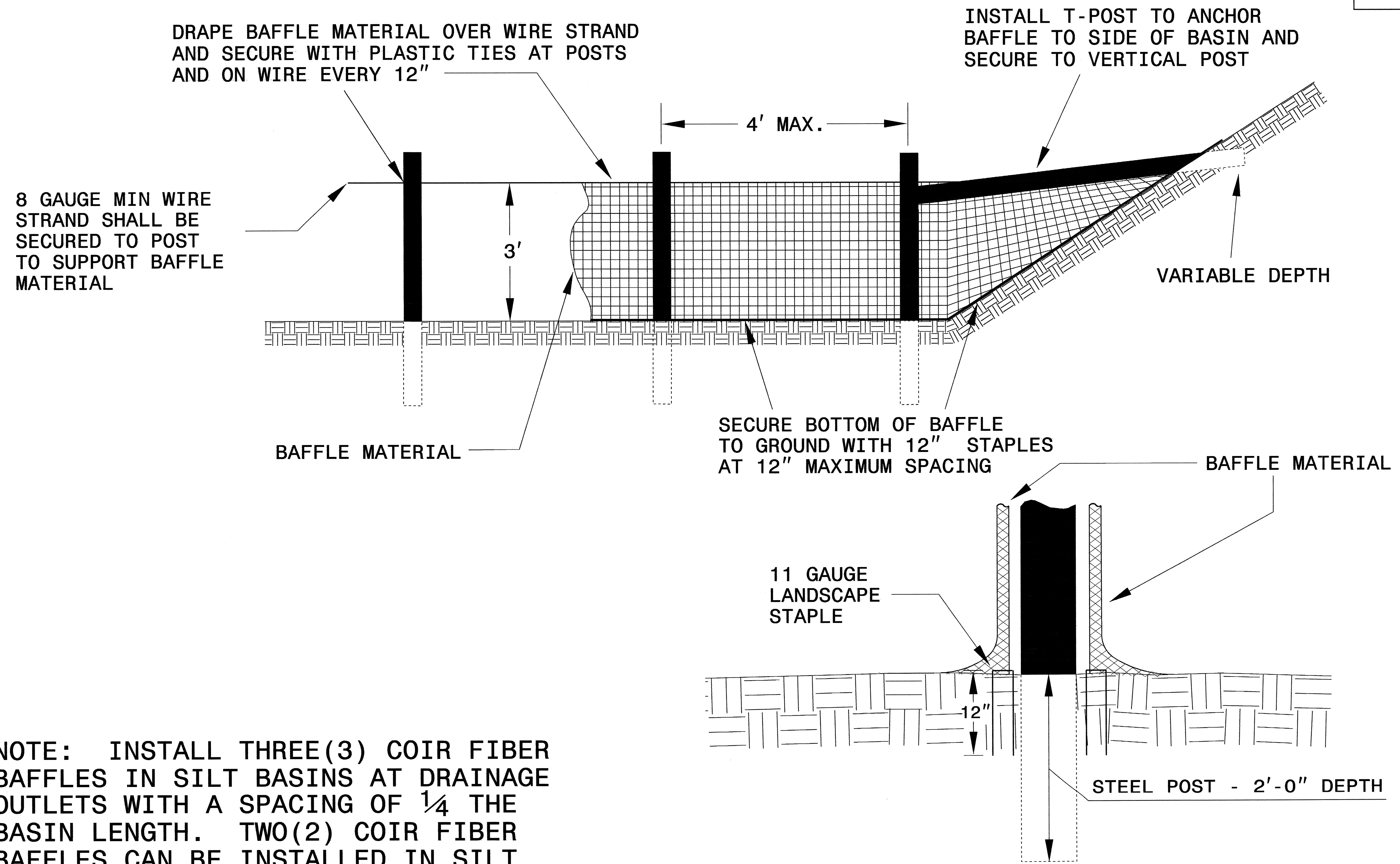
CROSS SECTION TRAPEZOIDAL DITCH



ELEVATION VIEW

PROJECT REFERENCE NO. B-4299	SHEET NO. EC-2A
RW SHEET NO.	
ROADWAY DESIGN ENGINEER	HYDRAULICS ENGINEER

COIR FIBER BAFFLE DETAIL

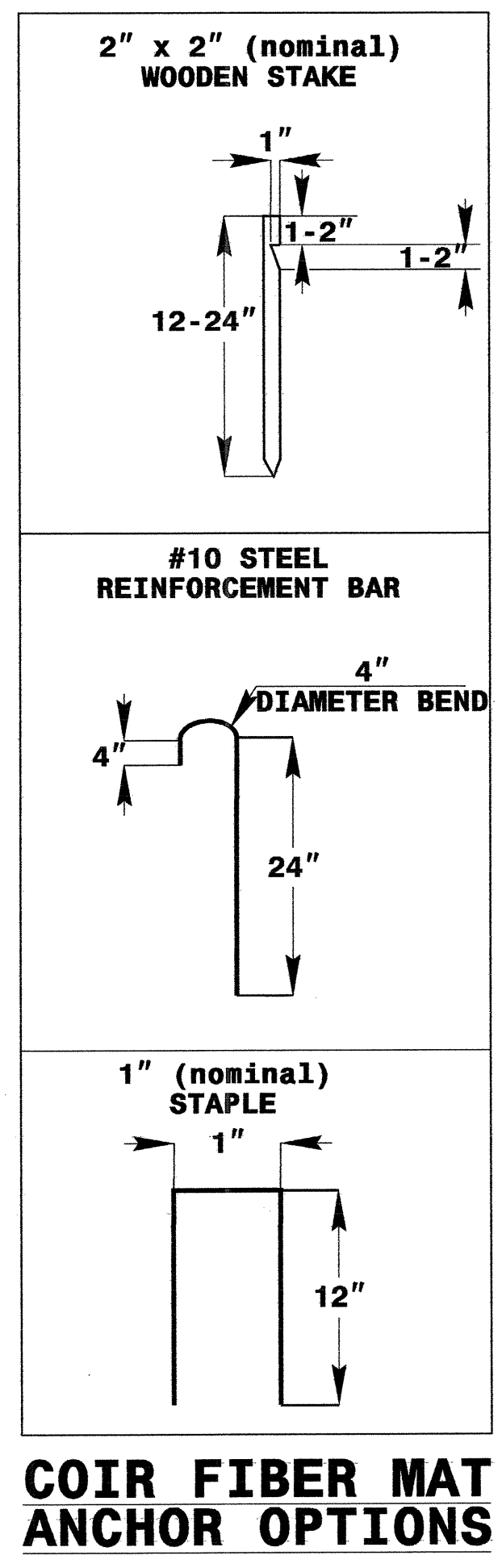
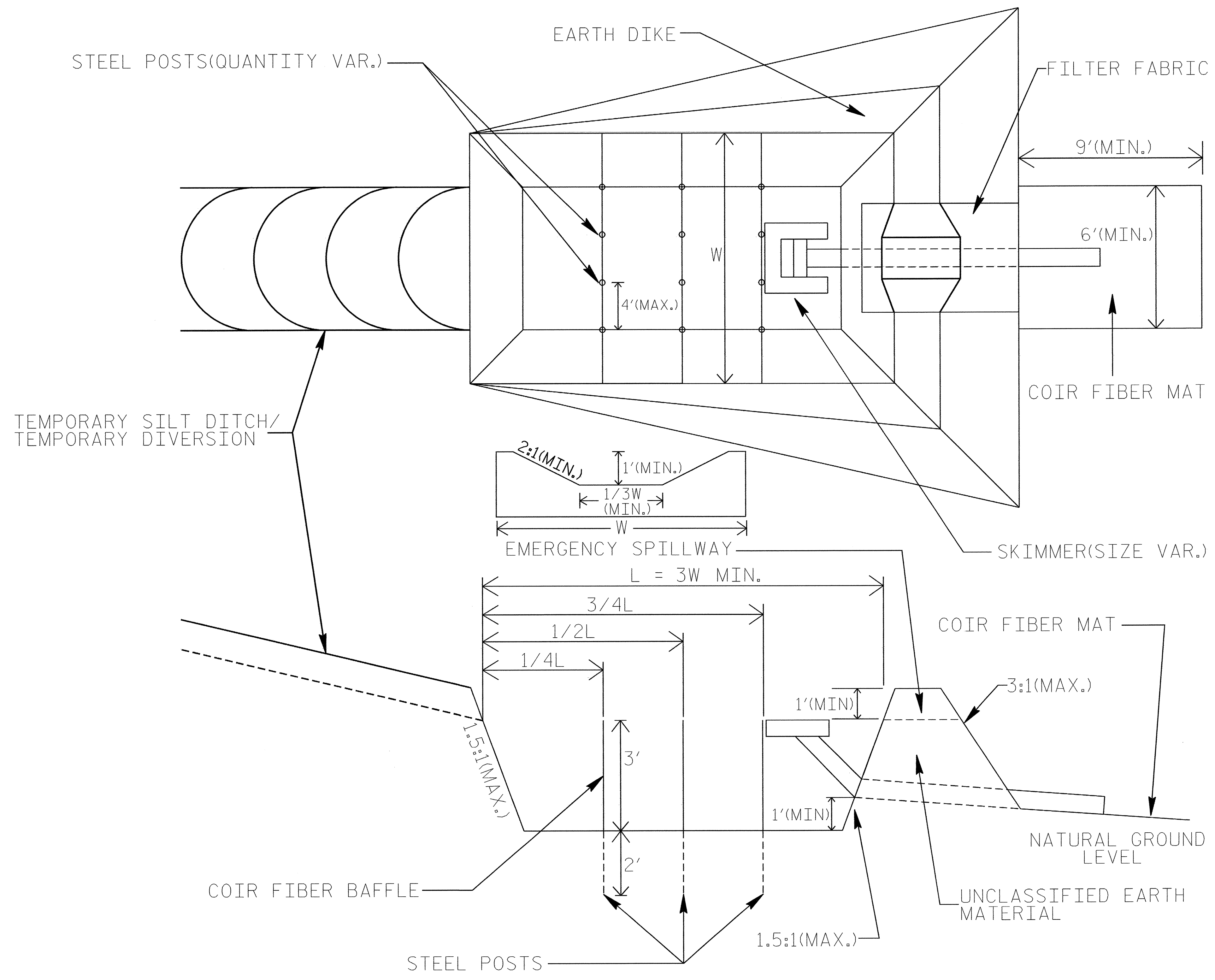


NOTE: INSTALL THREE(3) COIR FIBER BAFFLES IN SILT BASINS AT DRAINAGE OUTLETS WITH A SPACING OF $\frac{1}{4}$ THE BASIN LENGTH. TWO(2) COIR FIBER BAFFLES CAN BE INSTALLED IN SILT BASINS LESS THAN 20 FT. IN LENGTH WITH A SPACING OF $\frac{1}{3}$ THE BASIN LENGTH.

BAFFLE MATERIAL SHALL BE SECURED TO THE BOTTOM AND SIDES OF BASIN USING 12" LANDSCAPE STAPLES

SKIMMER BASIN WITH BAFFLES DETAIL

PROJECT REFERENCE NO. B-4299	SHEET NO. EC-2B
RW SHEET NO.	
ROADWAY DESIGN ENGINEER	HYDRAULICS ENGINEER

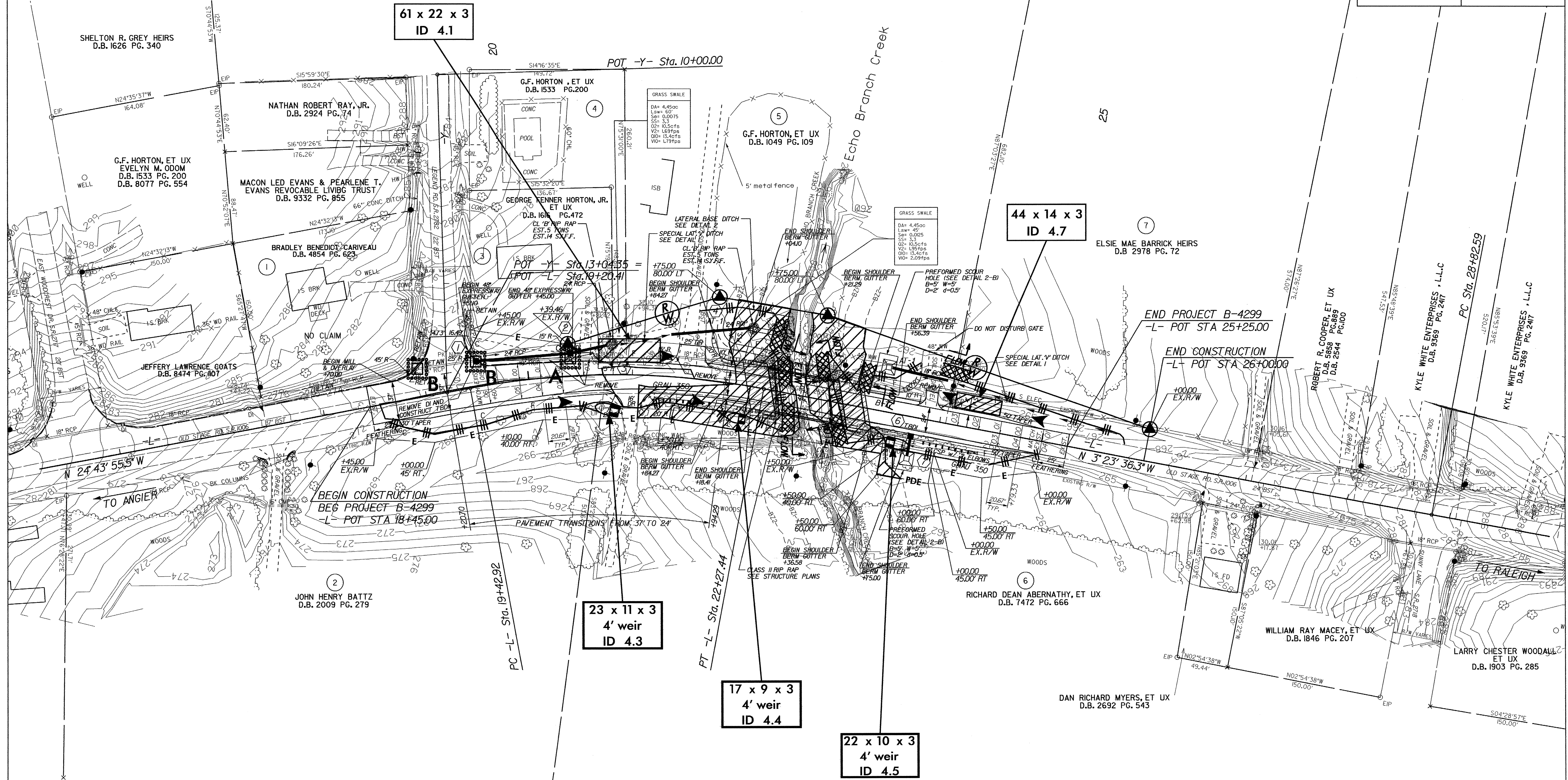


PROJECT REFERENCE NO. B-4299	SHEET NO. EC-4/CONST.4
RW SHEET NO.	
ROADWAY DESIGN ENGINEER	HYDRAULICS ENGINEER

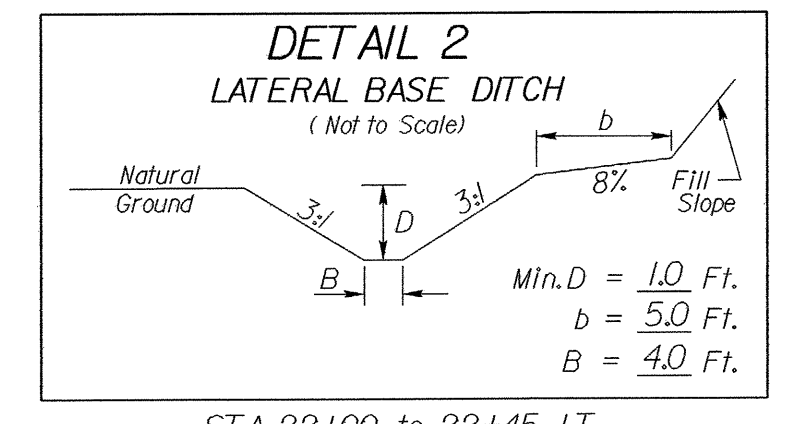
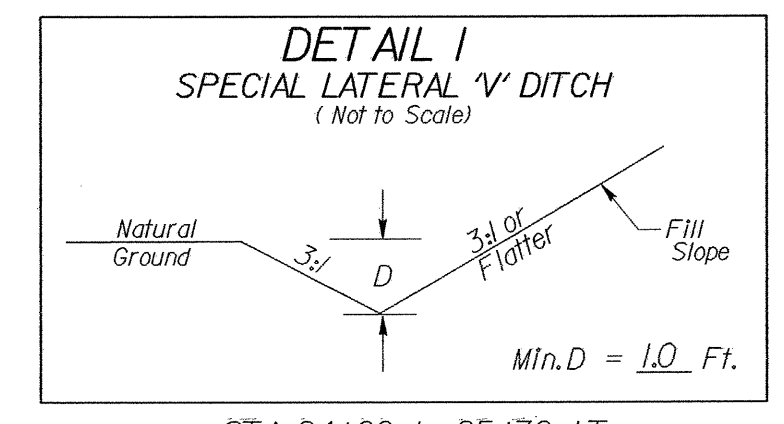
CLEARING AND GRUBBING
EROSION CONTROL FOR
CONSTRUCTION SHEET 4

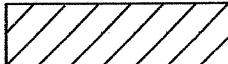
NOTE:
UTILIZE TEMPORARY ROCK SILT CHECK TYPE - A
AS STILLING BASIN WHERE APPLICABLE.

NOTE:
PLACE TEMPORARY ROCK SEDIMENT DAMS TYPE - B
AND TEMPORARY ROCK SILT CHECKS TYPE - A AT
DRAINAGE OUTLETS.



 ENVIRONMENTALLY SENSITIVE AREA
SEE PROJECT SPECIAL PROVISIONS



 DENOTES APPROACH SLAB
SEE SHEET NO.6 FOR PROFILE
SEE SHEETS S-1 THRU S-4 FOR STRUCTURE PLANS

STA. 24+00 TO 25+70 LT
STA. 20+75 TO 21+35 LT.

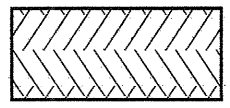
STA. 22+00 TO 22+45 LT

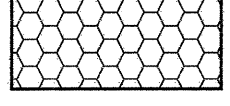
10/26/01

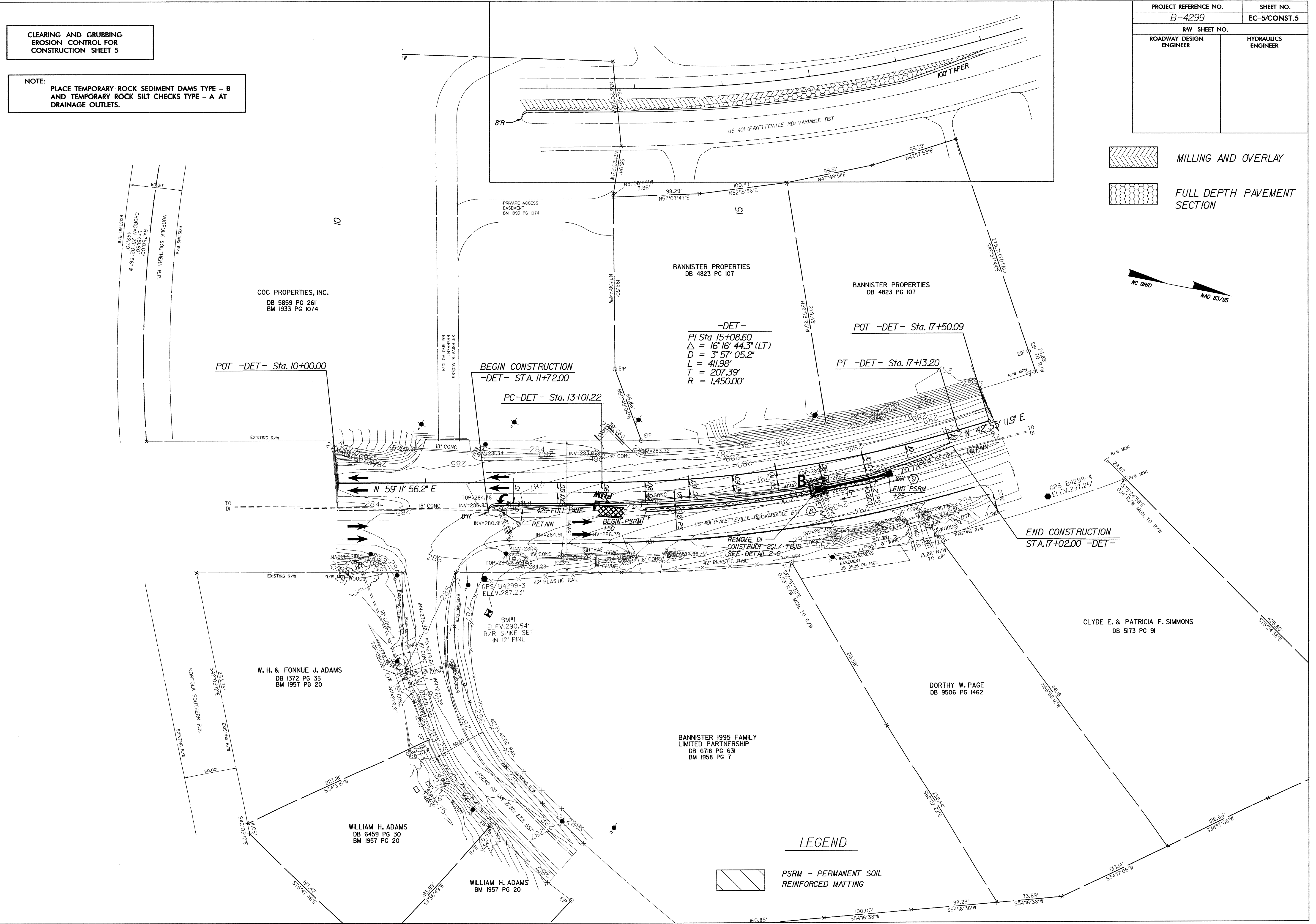
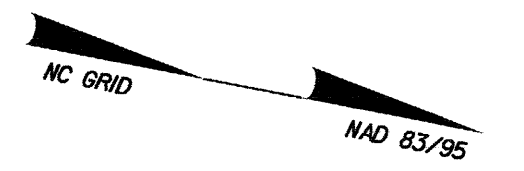
CLEARING AND GRUBBING
EROSION CONTROL FOR
CONSTRUCTION SHEET 5

NOTE:
PLACE TEMPORARY ROCK SEDIMENT DAMS TYPE - B
AND TEMPORARY ROCK SILT CHECKS TYPE - A AT
DRAINAGE OUTLETS.

PROJECT REFERENCE NO. B-4299	SHEET NO. EC-5/CONST.5
RW SHEET NO.	
ROADWAY DESIGN ENGINEER	HYDRAULICS ENGINEER

 MILLING AND OVERLAY

 FULL DEPTH PAVEMENT SECTION




-DET-
PI Sta. 15+08.60
 $\Delta = 16' 16' 44.3''$ (LT)
D = 3' 57' 05.2"
L = 411.98'
T = 207.39'
R = 1,450.00'

POT -DET- Sta. 17+50.09
PT -DET- Sta. 17+13.20

BEGIN CONSTRUCTION
-DET- STA. 11+72.00
PC-DET- Sta. 13+01.22

END CONSTRUCTION
STA. 17+02.00 -DET-

LEGEND

 PSRM - PERMANENT SOIL REINFORCED MATTING

COC PROPERTIES, INC.
DB 5859 PG 261
BM 1933 PG 1074

BANNISTER PROPERTIES
DB 4823 PG 107

BANNISTER PROPERTIES
DB 4823 PG 107

W. H. & FONNUE J. ADAMS
DB 1372 PG 35
BM 1957 PG 20

WILLIAM H. ADAMS
DB 6459 PG 30
BM 1957 PG 20

WILLIAM H. ADAMS
BM 1957 PG 20

BANNISTER 1995 FAMILY
LIMITED PARTNERSHIP
DB 6718 PG 631
BM 1958 PG 7

DORTHY W. PAGE
DB 9506 PG 1462

CLYDE E. & PATRICIA F. SIMMONS
DB 5173 PG 91

PROJECT REFERENCE NO.	SHEET NO.
B-4299	EC-6/CONST.4
RW SHEET NO.	
ROADWAY DESIGN ENGINEER	HYDRAULICS ENGINEER

NOTE:
UTILIZE TEMPORARY ROCK SILT CHECK TYPE - A
AS STILLING BASIN WHERE APPLICABLE.

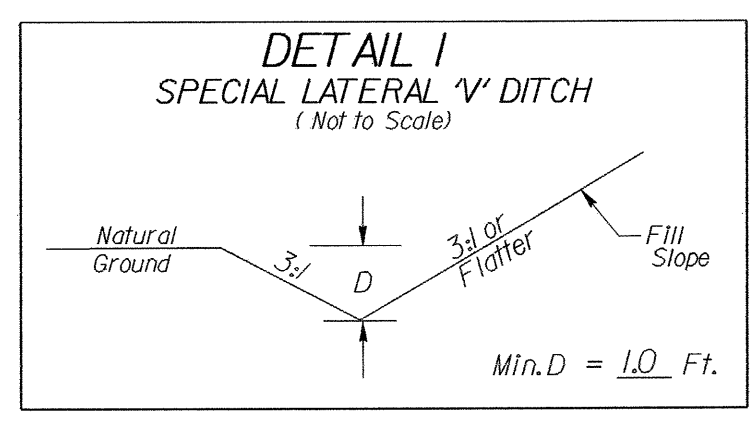
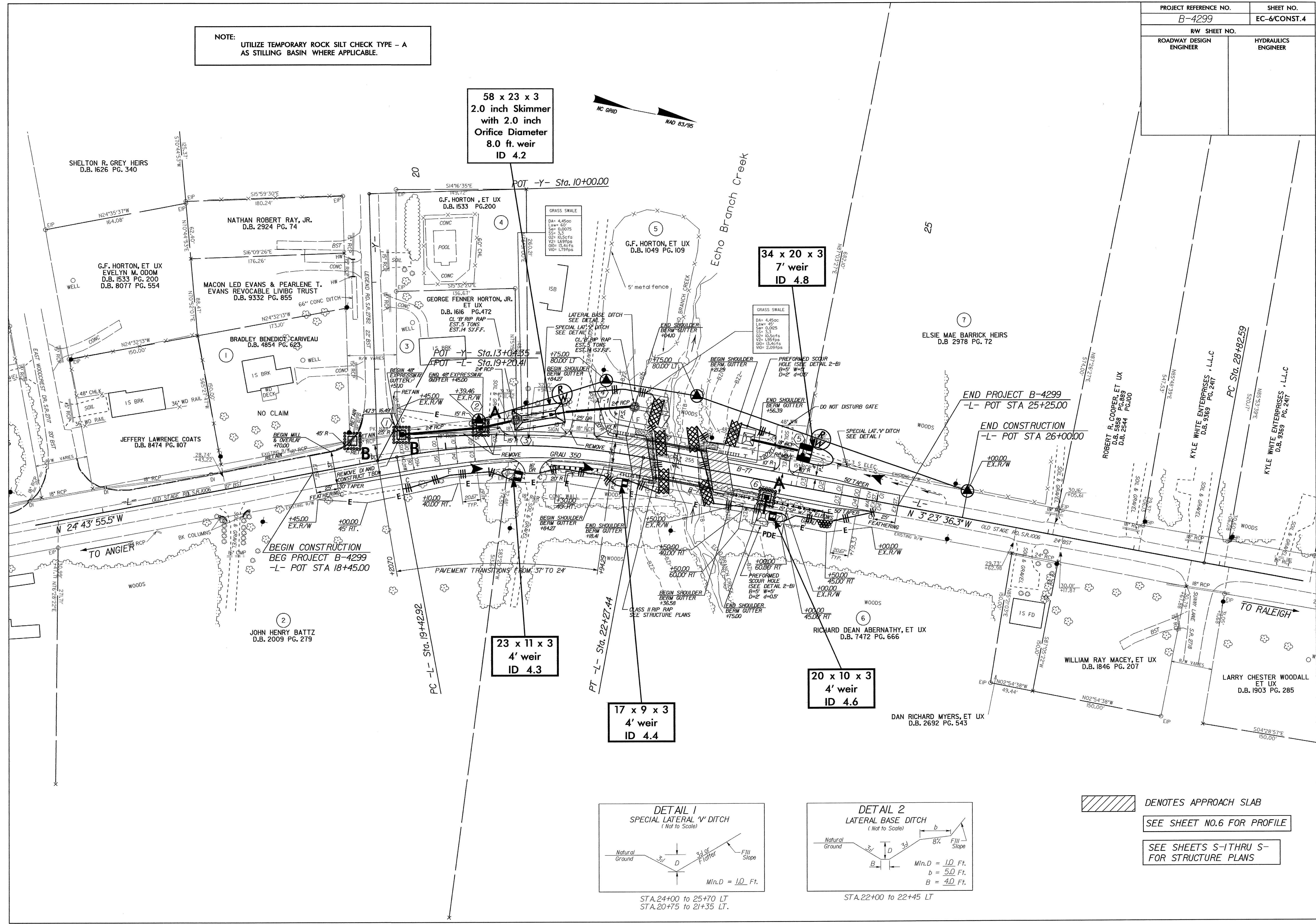
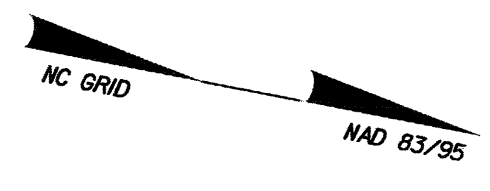
58 x 23 x 3
2.0 inch Skimmer
with 2.0 inch
Orifice Diameter
8.0 ft. weir
ID 4.2

34 x 20 x 3
7' weir
ID 4.8

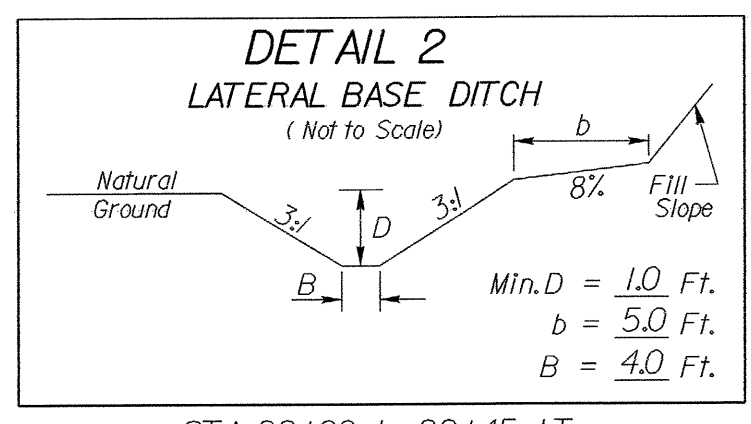
23 x 11 x 3
4' weir
ID 4.3

17 x 9 x 3
4' weir
ID 4.4

20 x 10 x 3
4' weir
ID 4.6



STA. 24+00 TO 25+70 LT
STA. 20+75 TO 21+35 LT.



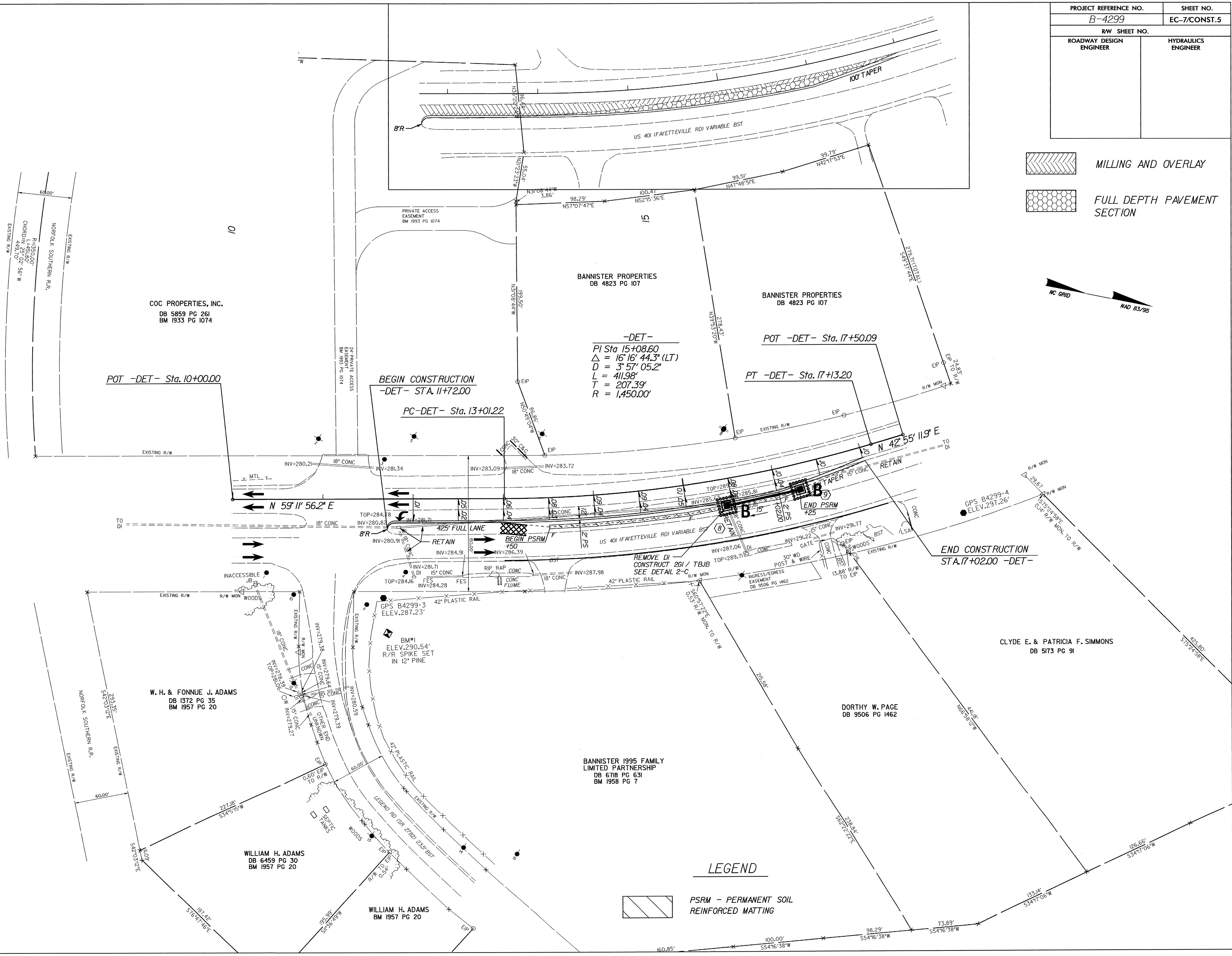
STA. 22+00 TO 22+45 LT

DENOTES APPROACH SLAB
SEE SHEET NO. 6 FOR PROFILE
SEE SHEETS S-1 THRU S-
FOR STRUCTURE PLANS

10/26/98

PROJECT REFERENCE NO.	SHEET NO.
B-4299	EC-7/CONST.5
RW SHEET NO.	
ROADWAY DESIGN ENGINEER	HYDRAULICS ENGINEER

-  MILLING AND OVERLAY
-  FULL DEPTH PAVEMENT SECTION



-DET-
 PI Sta. 15+08.60
 $\Delta = 16^{\circ} 16' 44.3''$ (LT)
 $D = 3' 57' 05.2''$
 $L = 411.98'$
 $T = 207.39'$
 $R = 1,450.00'$

LEGEND

 PSRM - PERMANENT SOIL REINFORCED MATTING