

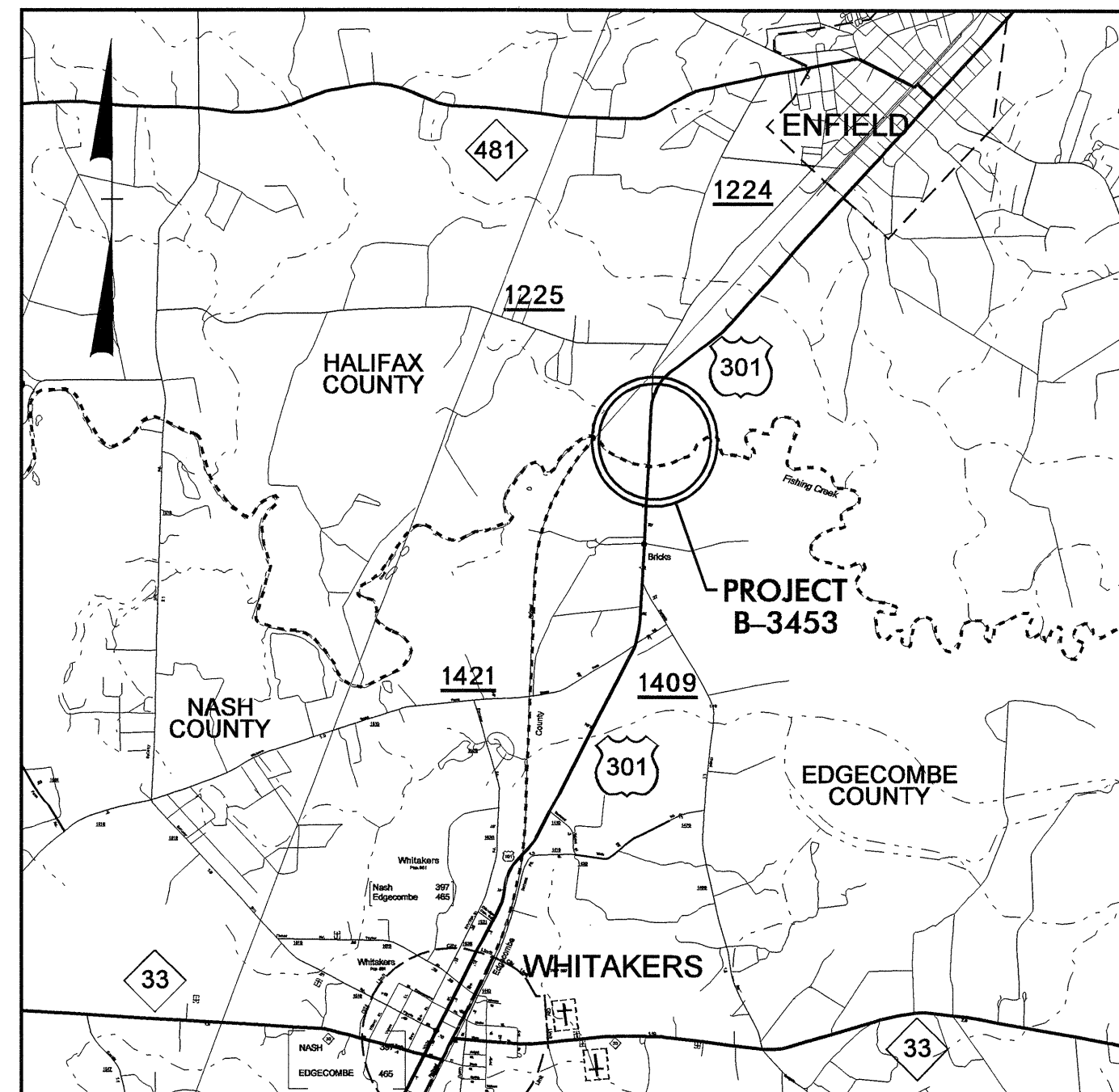
TIP: B-3453

CONTRACT: C201794

T.I.P. NO.	SHEET NO.
B-3453	UO-1

STATE OF NORTH CAROLINA
DIVISION OF HIGHWAYS

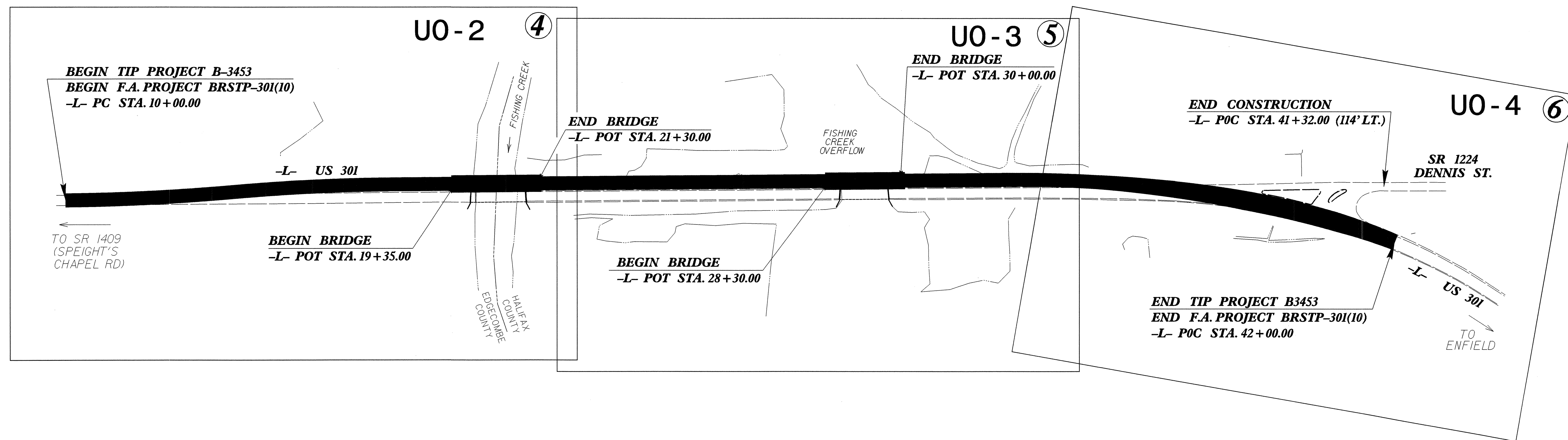
**UTILITIES BY OTHERS PLANS
EDGECOMBE & HALIFAX COUNTY**



VICINITY MAP

**LOCATION: BRIDGE NO. 23 OVER FISHING CREEK AND BRIDGE
NO. 17 OVER FISHING CREEK OVERFLOW ON US 301**

TYPE OF WORK: UTILITIES

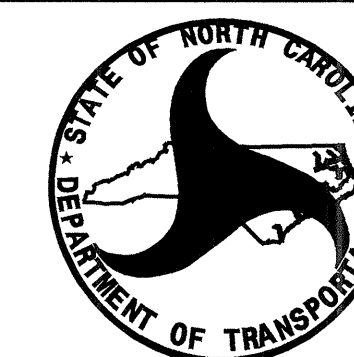


INDEX OF SHEETS

<u>SHEET NO.</u>	<u>DESCRIPTION</u>
UO-1	TITLE SHEET
UO-2 Thru UO-4	UTILITIES BY OTHERS PLAN SHEETS

UTILITY OWNERS ON PROJECT

- (1) Dominion Power
- (2) Sprint
- (3) Adelphia
- (4) Town of Enfield



PREPARED IN THE OFFICE OF:
**DIVISION OF HIGHWAYS
DESIGN SERVICES
UTILITY SECTION**
1591 MAIL SERVICES CENTER
RALEIGH NC 27699-1591
PHONE (919) 250-4128
FAX (919) 250-4119

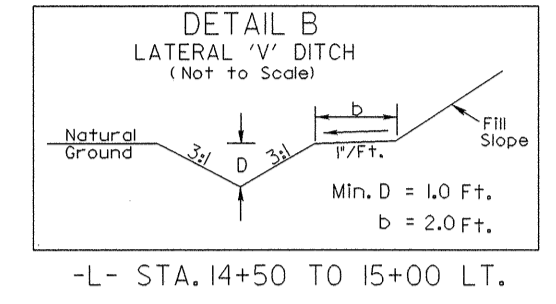
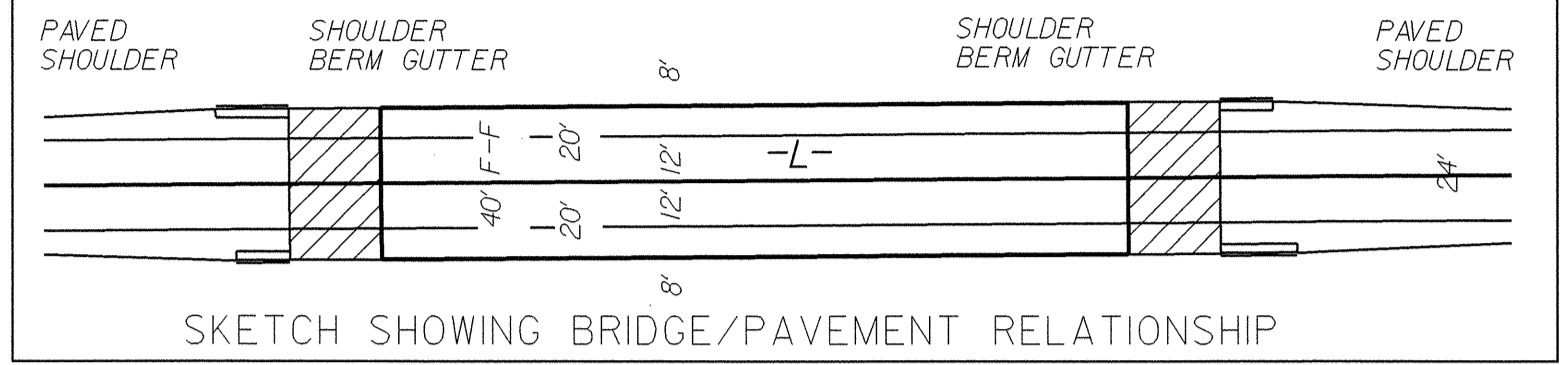
Roger Worthington, P.E. UTILITIES SECTION ENGINEER
Steve McKee, P.E. UTILITIES SQUAD LEADER PROJECT ENGINEER
Nabil Hamdan UTILITIES PROJECT DESIGNER

UTILITIES BY OTHERS

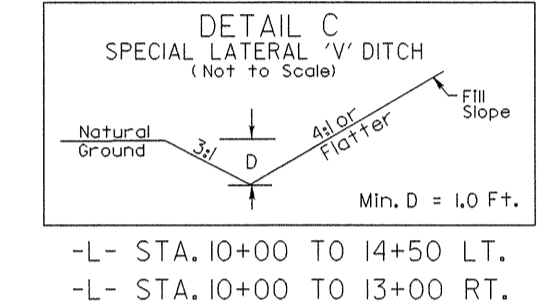
NOTE:
ALL PROPOSED UTILITY WORK
SHOWN ON THIS SHEET WILL
BE DONE BY OTHERS

NAD 8395

-L-
 PI Sta 11+97.00 PI Sta 15+90.81
 $\Delta = 4' 30'' 45.6''$ (LT) $\Delta = 4' 30'' 45.6''$ (RT)
 $D = 1' 08'' 45.3''$ $D = 1' 08'' 45.3''$
 $L = 393.80'$ $L = 393.80'$
 $T = 197.00'$ $T = 197.00'$
 $R = 5,000.00'$ $R = 5,000.00'$
 $SE = 0.035$ $SE = 0.035$
 $RO = 87.50'$ $RO = 87.50'$

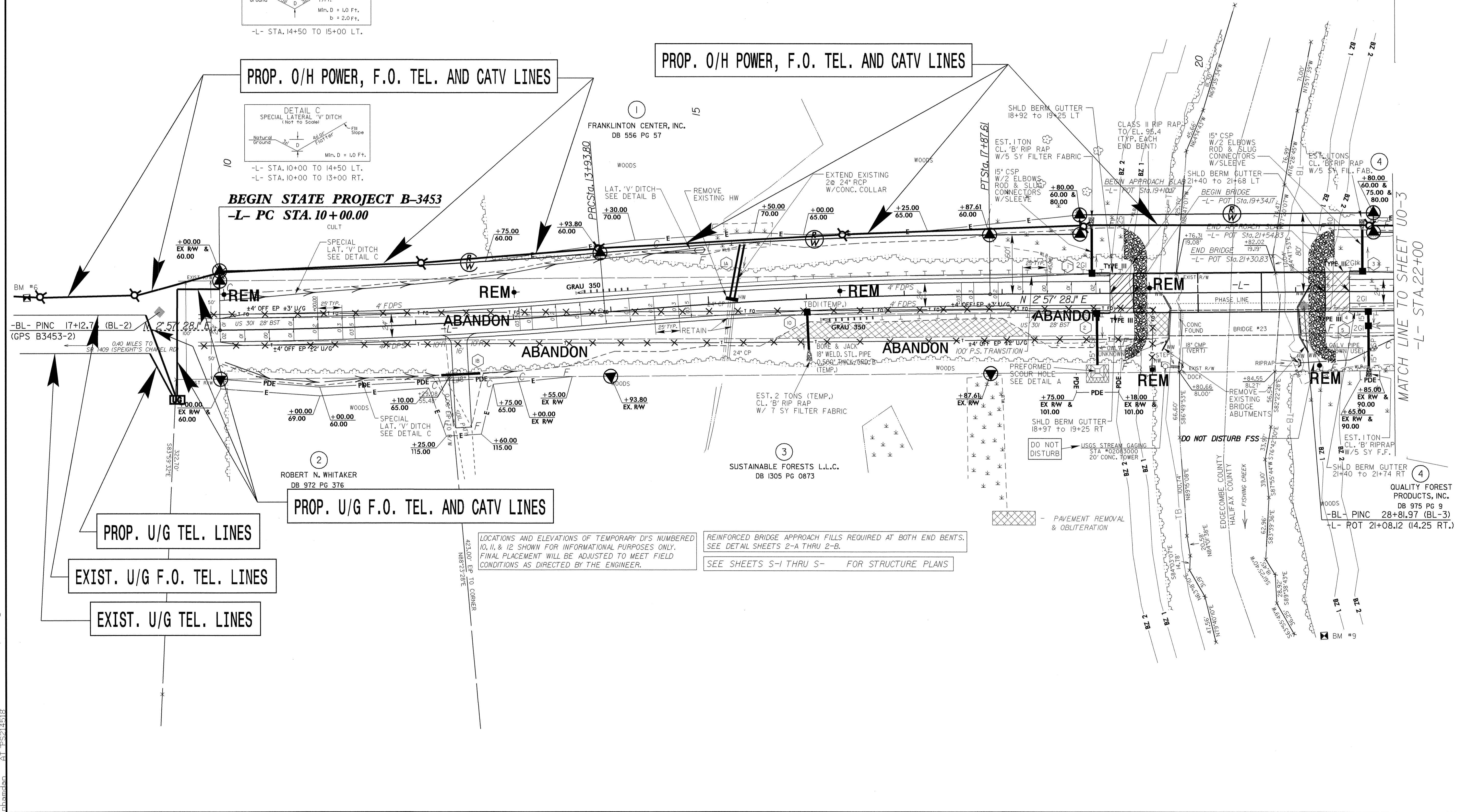


-L- STA. 14+50 TO 15+00 LT.



-L- STA. 10+00 TO 14+50 LT.
-L- STA. 10+00 TO 13+00 RT.

BEGIN STATE PROJECT B-3453
-L- PC STA. 10+00.00



PROP. U/G TEL. LINES

EXIST. U/G F.O. TEL. LINES

EXIST. U/G TEL. LINES

PROP. U/G F.O. TEL. AND CATV LINES

PROP. O/H POWER, F.O. TEL. AND CATV LINES

PROP. O/H POWER, F.O. TEL. AND CATV LINES

LOCATIONS AND ELEVATIONS OF TEMPORARY D'S NUMBERED 10, 11, & 12 SHOWN FOR INFORMATIONAL PURPOSES ONLY. FINAL PLACEMENT WILL BE ADJUSTED TO MEET FIELD CONDITIONS AS DIRECTED BY THE ENGINEER.

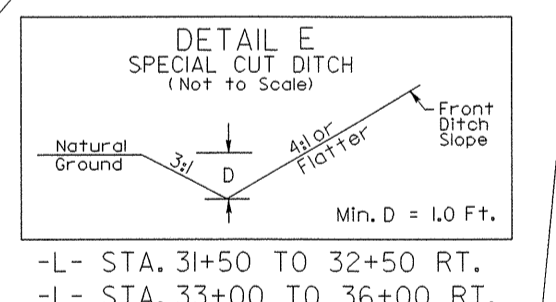
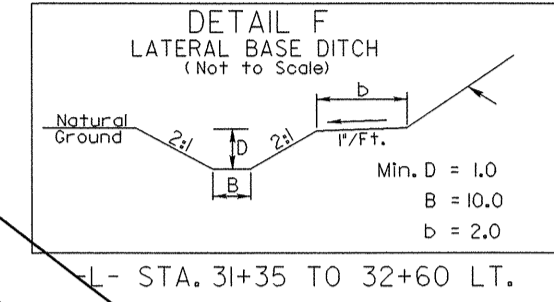
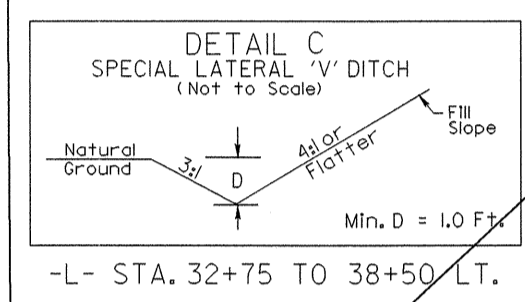
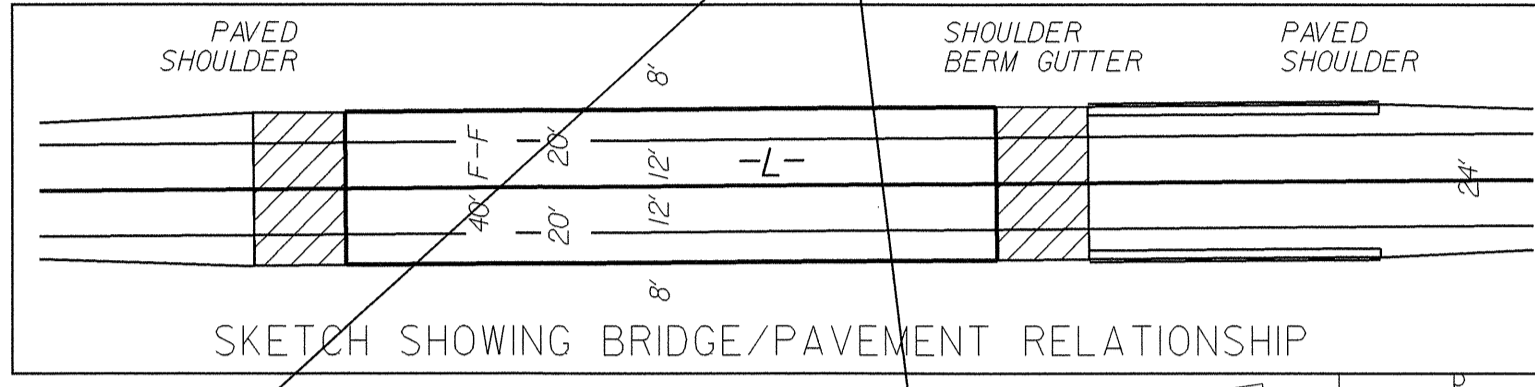
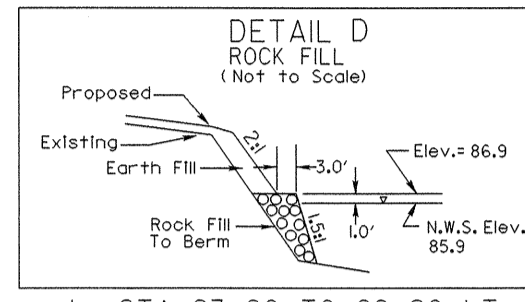
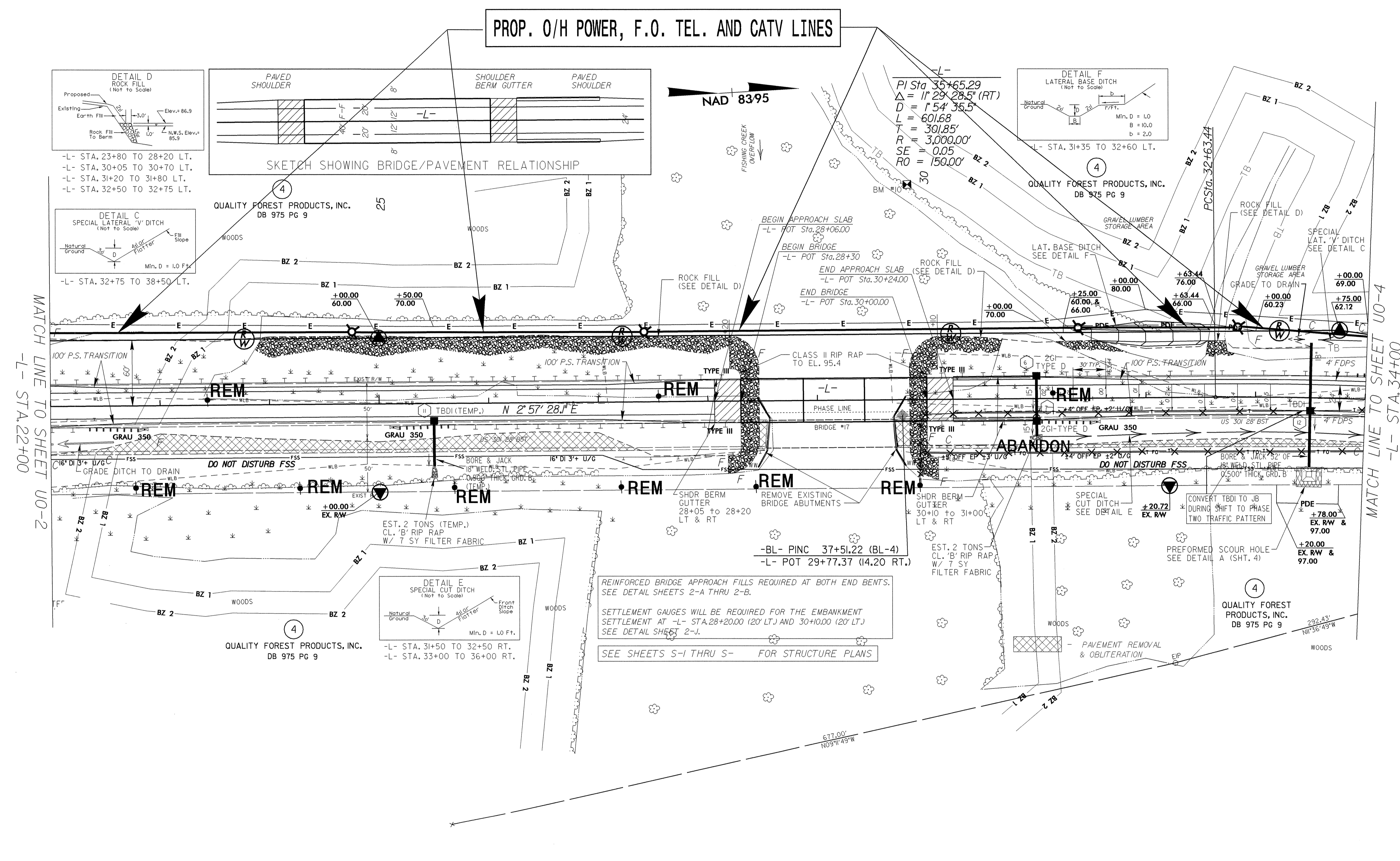
REINFORCED BRIDGE APPROACH FILLS REQUIRED AT BOTH END BENTS. SEE DETAIL SHEETS 2-A THRU 2-B. SEE SHEETS S-1 THRU S- FOR STRUCTURE PLANS

8/17/99
10-APR-2006 14:55
r:\utilities\cdh\ut\proj\b3453_ut_uo2_psh4.dgn
nhamdan AT 15:21:51

UTILITIES BY OTHERS

NOTE:
ALL PROPOSED UTILITY WORK SHOWN ON THIS SHEET WILL BE DONE BY OTHERS

PROP. O/H POWER, F.O. TEL. AND CATV LINES



REINFORCED BRIDGE APPROACH FILLS REQUIRED AT BOTH END BENTS. SEE DETAIL SHEETS 2-A THRU 2-B.
SETTLEMENT GAUGES WILL BE REQUIRED FOR THE EMBANKMENT SETTLEMENT AT -L- STA.28+20.00 (20' LT.) AND 30+10.00 (20' LT.) SEE DETAIL SHEET 2-J.
SEE SHEETS S-1 THRU S- FOR STRUCTURE PLANS

MATCH LINE TO SHEET UO-2
-L- STA.22+00

MATCH LINE TO SHEET UO-4
-L- STA.34+00

REVISIONS

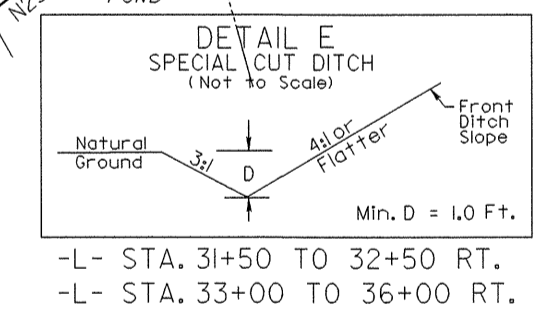
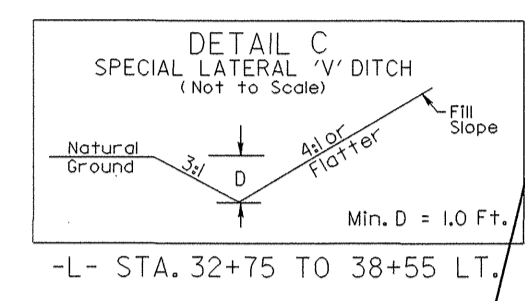
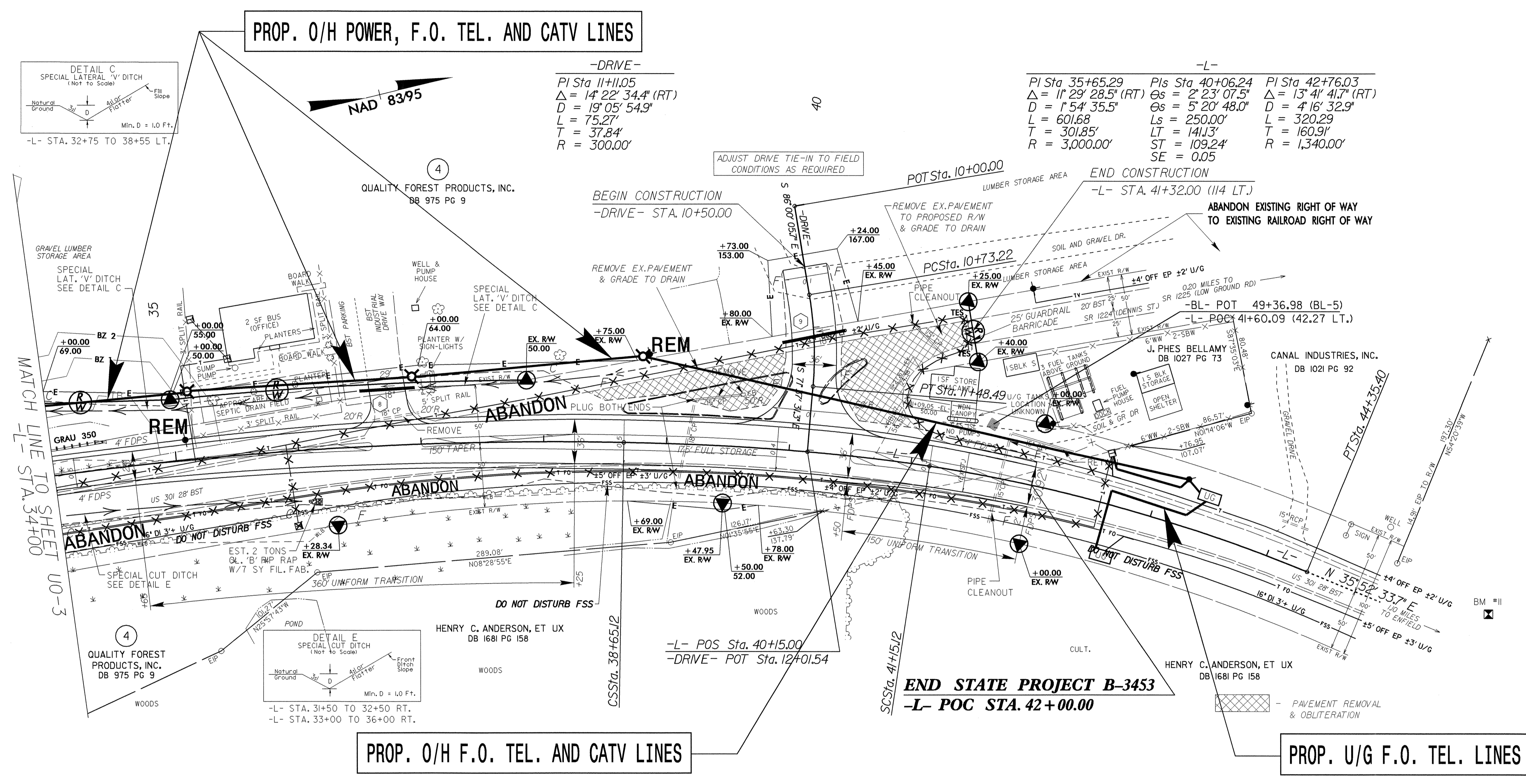
HENRY C. ANDERSON, ET UX
DB 1681 PG 158

8/17/99

07-APR-2006 09:59
r:\utilities\psh5\ps214518\ps3453_ut_uo3_psh5.dgn
ps214518

UTILITIES BY OTHERS

NOTE:
 ALL PROPOSED UTILITY WORK
 SHOWN ON THIS SHEET WILL
 BE DONE BY OTHERS



-DRIVE-
 PI Sta 11+11.05
 $\Delta = 14^\circ 22' 34.4''$ (RT)
 $D = 19^\circ 05' 54.9''$
 $L = 75.27'$
 $T = 37.84'$
 $R = 300.00'$

-L-

PI Sta 35+65.29 $\Delta = 1^\circ 29' 28.5''$ (RT) $D = 1^\circ 54' 35.5''$ $L = 601.68'$ $T = 301.85'$ $R = 3,000.00'$	PIs Sta 40+06.24 $\Theta_s = 2^\circ 23' 07.5''$ $\Theta_s = 5^\circ 20' 48.0''$ $L_s = 250.00'$ $LT = 141.13'$ $ST = 109.24'$ $SE = 0.05$	PI Sta 42+76.03 $\Delta = 13^\circ 41' 41.7''$ (RT) $D = 4^\circ 16' 32.9''$ $L = 320.29'$ $T = 160.91'$ $R = 1,340.00'$
--	--	---

END STATE PROJECT B-3453
-L- POC STA. 42+00.00

8/17/99
 07-APR-2006 09:58
 C:\Utilities\psh6\PS214518\B3453_ut_U04_psh6.dgn
 nhamdan