

STATE OF NORTH CAROLINA
DIVISION OF HIGHWAYS

STATE PROJECT REFERENCE NO.	SHEET NO.
R-2606A	TCP-1

**PLAN FOR PROPOSED
TRAFFIC CONTROL, MARKING & DELINEATION
RANDOLPH COUNTY**

ROADWAY STANDARD DRAWINGS

THE FOLLOWING ROADWAY STANDARDS AS APPEAR IN "ROADWAY STANDARD DRAWINGS" - ROADWAY DESIGN UNIT-N.C. DEPARTMENT OF TRANSPORTATION-RALEIGH, N.C., DATED JANUARY 2006 ARE APPLICABLE TO THIS PROJECT AND BY REFERENCE HEREBY ARE CONSIDERED A PART OF THESE PLANS:

STD. NO.	TITLE
1101.02	TEMPORARY LANE CLOSURES
1101.03	TEMPORARY ROAD CLOSURES
1101.04	TEMPORARY SHOULDER CLOSURES
1101.05	WORK ZONE VEHICLE ACCESSES
1101.11	TRAFFIC CONTROL PLAN DESIGN TABLES
1110.01	STATIONARY WORK ZONE SIGNS
1110.02	PORTABLE WORK ZONE SIGNS
1115.01	FLASHING ARROW PANELS
1130.01	DRUMS
1135.01	CONES
1145.01	BARRICADES
1150.01	FLAGGERS
1205.01	PAVEMENT MARKINGS - LINE TYPES & OFFSETS
1205.02	PAVEMENT MARKINGS - 2 LANE & MULTILANE ROADWAYS
1205.04	PAVEMENT MARKINGS - INTERSECTIONS
1205.05	PAVEMENT MARKINGS - TURN LANES
1205.06	PAVEMENT MARKINGS - THRU LANE DROPS
1205.08	PAVEMENT MARKINGS - SYMBOLS & WORD MESSAGES
1205.09	PAVEMENT MARKINGS - PAINTED ISLANDS
1205.12	PAVEMENT MARKINGS - BRIDGES
1250.01	PAVEMENT MARKER SPACING
1251.01	RAISED PAVEMENT MARKERS (TEMPORARY & PERMANENT)
1253.01	SNOWPLOWABLE RAISED PAVEMENT MARKERS
1261.01	GUARDRAIL & BARRIER DELINEATOR SPACING
1261.02	GUARDRAIL & BARRIER DELINEATOR TYPES
1262.01	GUARDRAIL END DELINEATION
1264.01	OBJECT MARKERS
1264.02	PLACEMENT OF OBJECT MARKERS
1267.01	FLEXIBLE DELINEATOR INSTALLATION
1267.02	FLEXIBLE DELINEATOR SPACING
1267.03	FLEXIBLE DELINEATOR - INTERCHANGES

INDEX OF SHEETS

SHEET NO.	TITLE
TCP-1	LEGEND, INDEX OF SHEETS, AND LIST OF APPLICABLE ROADWAY STANDARD DRAWINGS
TCP-2	PROJECT NOTES
TCP-3	PHASING
TCP-4	TEMPORARY PAVEMENT MARKING SCHEDULE
TCP-5 THRU TCP-6	PHASE I OVERVIEW
TCP-7 THRU TCP-8	PHASE II OVERVIEW
TCP-9 THRU TCP-13	PHASE II DETAILS
TCP-14 THRU TCP-15	PHASE III DETAILS
TCP-16	ADVANCED WORK ZONE WARNING SIGNS
PM-1	FINAL PAVEMENT MARKING SCHEDULE
PM-2 THRU PM-8	FINAL PAVEMENT MARKING PLANS

LEGEND

- GENERAL**
- DIRECTION OF TRAFFIC FLOW
 - NORTH ARROW
 - PROPOSED PVMT. EXIST. PVMT.
 - WORK AREA
 - REMOVAL OF EXISTING PAVEMENT
- TRAFFIC CONTROL DEVICES**
- TYPE I BARRICADE
 - TYPE II BARRICADE
 - TYPE III BARRICADE
 - CONE
 - DRUM
 - FLASHING ARROW PANEL (TYPE C)
 - TYPE 'B' WARNING LIGHT
 - STATIONARY SIGN
 - PORTABLE SIGN
 - STATIONARY OR PORTABLE SIGN
 - WARNING FLAGS
 - CRASH CUSHION
 - CHANGEABLE MESSAGE SIGN
 - TRUCK MOUNTED IMPACT ATTENUATOR (TMIA)
 - POLICE
 - FLAGGER
- PAVEMENT MARKINGS**
- CRYSTAL/CRYSTAL PAVEMENT MARKER
 - YELLOW/YELLOW PAVEMENT MARKER
 - CRYSTAL/RED PAVEMENT MARKER
 - PAVEMENT MARKING SYMBOLS

N.C.D.O.T. WORK ZONE TRAFFIC CONTROL UNIT REVIEW AND CONTACT PERSONNEL	
J. S. BOURNE, P.E.	WORK ZONE TRAFFIC CONTROL ENGINEER
J. ISHAK, P.E.	WORK ZONE TRAFFIC CONTROL PROJECT ENGINEER
B. WATSON, P.E.	WORK ZONE TRAFFIC CONTROL PROJECT DESIGN ENGINEER
A. LYUDMIRSKAYA	WORK ZONE TRAFFIC CONTROL DESIGN ENGINEER
	WORK ZONE TRAFFIC CONTROL DESIGN TECHNICIAN

PLAN PREPARED IN THE OFFICE OF:	APPROVED:	KUBILINS TRANSPORTATION GROUP, INC.
	DATE: 05/01/06	
TRANSPORTATION GROUP, INC. 800 W. Hill Street, Suite 202 CHARLOTTE, NC 28208 PH: (980) 321-0202 FAX: (980) 321-0108	SEAL 	TIMOTHY M. AREY, P.E. PRINCIPAL PROJECT MANAGER LARRY D. ASHLEY DESIGN ENGINEER DESIGN TECHNICIAN

PROJECT NOTES

PROJ. REFERENCE NO.	SHEET NO.
R-2606A	TCP-2

GENERAL NOTES

ADAPT THE TRAFFIC CONTROL PLANS, WHEN DIRECTED BY THE ENGINEER, TO MEET FIELD CONDITIONS TO PROVIDE SAFE AND EFFICIENT TRAFFIC MOVEMENT. CHANGES MAY BE REQUIRED WHEN PHYSICAL DIMENSIONS IN THE DETAIL DRAWINGS, STANDARD DETAILS AND ROADWAY DETAILS ARE NOT ATTAINABLE, OR RESULT IN DUPLICATE, OR UNDESIRED OVERLAPPING OF DEVICES. MODIFICATION MAY INCLUDE: MOVING, SUPPLEMENTING, COVERING OR REMOVAL OF DEVICES.

THE FOLLOWING GENERAL NOTES APPLY AT ALL TIMES FOR THE DURATION OF THE CONSTRUCTION PROJECT, EXCEPT WHEN OTHERWISE NOTED IN THE PLAN, OR DIRECTED BY THE ENGINEER.

TIME RESTRICTIONS

A) DO NOT CLOSE OR NARROW TRAVEL LANES AS FOLLOWS:

ROAD NAME	DAY AND TIME RESTRICTIONS
1. -Y2- (US 311)	MONDAY THROUGH FRIDAY 7:00AM TO 9:00AM & 4:00PM TO 6:00PM, MON-FRI

B) DO NOT CLOSE OR NARROW TRAVEL LANES DURING HOLIDAYS AND SPECIAL EVENTS AS FOLLOWS:

ROAD NAME	HOLIDAY
1. -Y2- (US 311)	
1.	FOR ANY EVENT THAT CREATES UNUSUALLY HIGH TRAFFIC VOLUMES, AS DIRECTED BY THE ENGINEER.
2.	FOR NEW YEAR'S, BETWEEN THE HOURS OF 4:00 P.M. DECEMBER 31ST TO 9:00 A.M. JANUARY 2ND. IF NEW YEAR'S DAY IS ON A SATURDAY OR A SUNDAY, THEN UNTIL 9:00 A.M. THE FOLLOWING TUESDAY.
3.	FOR EASTER, BETWEEN THE HOURS OF 4:00 P.M. THURSDAY AND 9:00 A.M. MONDAY.
4.	FOR MEMORIAL DAY, BETWEEN THE HOURS OF 4:00 P.M. FRIDAY TO 9:00 A.M. TUESDAY.
5.	FOR INDEPENDENCE DAY, BETWEEN THE HOURS OF 4:00 P.M. THE DAY BEFORE INDEPENDENCE DAY AND 9:00 A.M. THE DAY AFTER INDEPENDENCE DAY.
	IF INDEPENDENCE DAY IS ON A SATURDAY OR SUNDAY, THEN BETWEEN THE HOURS OF 4:00 P.M. THE THURSDAY BEFORE INDEPENDENCE DAY AND 9:00 A.M. THE TUESDAY AFTER INDEPENDENCE DAY.
6.	FOR LABOR DAY, BETWEEN THE HOURS OF 4:00 P.M. FRIDAY TO 9:00 A.M. TUESDAY.
7.	FOR THANKSGIVING, BETWEEN THE HOURS OF 4:00 P.M. TUESDAY TO 9:00 A.M. MONDAY.
8.	FOR CHRISTMAS, BETWEEN THE HOURS OF 4:00 P.M. THE FRIDAY BEFORE THE WEEK OF CHRISTMAS DAY AND 9:00 A.M. THE FOLLOWING MONDAY AFTER THE WEEK OF CHRISTMAS.
9.	FOR EVENTS AT HIGH POINT FURNITURE MART, BETWEEN THE HOURS OF 4:00 P.M. THE DAY BEFORE THE EVENT BEGINS AND 9:00 A.M. THE DAY AFTER THE EVENT ENDS.

C) DO NOT CONDUCT ANY HAULING OPERATIONS AGAINST THE FLOW OF TRAFFIC OF AN OPEN TRAVELWAY UNLESS THE WORK AREA IS PROTECTED BY BARRIER OR GUARDRAIL OR OTHERWISE DIRECTED BY THE ENGINEER.

D) DO NOT STOP TRAFFIC FOR MORE THAN 15 MINUTES AS FOLLOWS:

ROAD NAME	OPERATION
1. US 311	SHIFTING TRAFFIC

LANE AND SHOULDER CLOSURE REQUIREMENTS

E) REMOVE LANE CLOSURE DEVICES FROM THE LANE WHEN WORK IS NOT BEING PERFORMED BEHIND THE LANE CLOSURE OR WHEN A LANE CLOSURE IS NO LONGER NEEDED, OR AS DIRECTED BY THE ENGINEER.

F) WHEN PERSONNEL AND/OR EQUIPMENT ARE WORKING WITHIN 40 FT OF AN OPEN TRAVEL LANE, CLOSE THE NEAREST OPEN SHOULDER USING TCP-16 UNLESS THE WORK AREA IS PROTECTED BY BARRIER OR GUARDRAIL.

G) WHEN PERSONNEL AND/OR EQUIPMENT ARE WORKING ON THE SHOULDER ADJACENT TO AN UNDIVIDED FACILITY AND WITHIN 5 FT OF AN OPEN TRAVEL LANE, CLOSE THE NEAREST OPEN TRAVEL LANE USING ROADWAY STANDARD DRAWING NO. 1101.02 UNLESS THE WORK AREA IS PROTECTED BY BARRIER OR GUARDRAIL.

WHEN PERSONNEL AND/OR EQUIPMENT ARE WORKING ON THE SHOULDER ADJACENT TO A DIVIDED FACILITY AND WITHIN 10 FT OF AN OPEN TRAVEL LANE, CLOSE THE NEAREST OPEN TRAVEL LANE USING ROADWAY STANDARD DRAWING NO. 1101.02 UNLESS THE WORK AREA IS PROTECTED BY BARRIER OR GUARDRAIL.

H) WHEN PERSONNEL AND/OR EQUIPMENT ARE WORKING WITHIN A LANE OF TRAVEL OF AN UNDIVIDED OR DIVIDED FACILITY, CLOSE THE LANE ACCORDING TO THE TRAFFIC CONTROL PLANS, ROADWAY STANDARD DRAWINGS OR AS DIRECTED BY THE ENGINEER. CONDUCT THE WORK SO THAT ALL PERSONNEL AND/OR EQUIPMENT REMAIN WITHIN THE CLOSED TRAVEL LANE.

I) DO NOT WORK SIMULTANEOUSLY, ON BOTH SIDES OF AN OPEN TRAVELWAY, WITHIN THE SAME LOCATION, ON A TWO-LANE, TWO-WAY ROAD.

J) DO NOT PERFORM WORK INVOLVING HEAVY EQUIPMENT WITHIN 15 FT OF THE EDGE OF TRAVELWAY WHEN WORK IS BEING PERFORMED BEHIND A LANE CLOSURE ON THE OPPOSITE SIDE OF THE TRAVELWAY.

PAVEMENT EDGE DROP OFF REQUIREMENTS

K) BACKFILL AT A 6:1 SLOPE UP TO THE EDGE AND ELEVATION OF EXISTING PAVEMENT IN AREAS ADJACENT TO AN OPENED TRAVEL LANE THAT HAS A DROP-OFF AS FOLLOWS:

BACKFILL DROP-OFFS THAT EXCEED 2 INCHES ON ROADWAYS WITH POSTED SPEED LIMITS OF 45 MPH OR GREATER.

BACKFILL DROP-OFFS THAT EXCEED 3 INCHES ON ROADWAYS WITH POSTED SPEED LIMITS LESS THAN 45 MPH.

BACKFILL WITH SUITABLE COMPACTED MATERIAL, AS APPROVED BY THE ENGINEER, AT NO EXPENSE TO THE DEPARTMENT.

L) DO NOT EXCEED A DIFFERENCE OF 1.5 inches IN ELEVATION BETWEEN OPEN LANES OF TRAFFIC. INSTALL ADVANCE WARNING "UNEVEN LANES" SIGNS (W8-11) 500 FT IN ADVANCE AND A MINIMUM OF ONCE EVERY MILE THROUGHOUT THE UNEVEN AREA.

TRAFFIC PATTERN ALTERATIONS

M) NOTIFY THE ENGINEER TWENTY ONE (21) CALENDAR DAYS PRIOR TO ANY TRAFFIC PATTERN ALTERATION.

SIGNING

N) INSTALL ADVANCE WORK ZONE WARNING SIGNS WHEN WORK IS WITHIN 100 FT FROM THE EDGE OF TRAVEL LANE AND NO MORE THAN THREE (3) DAYS PRIOR TO THE BEGINNING OF CONSTRUCTION.

WHEN NO WORK IS BEING CONDUCTED FOR A PERIOD LONGER THAN ONE WEEK, REMOVE OR COVER ALL ADVANCE WORK ZONE WARNING SIGNS, AS DIRECTED BY THE ENGINEER, AT NO COST TO THE DEPARTMENT.

O) PROVIDE PERMANENT SIGNING.

P) STATE FORCES WILL BE RESPONSIBLE FOR DETOUR SIGNING WITHIN AND OFF THE PROJECT LIMITS.

Q) COVER OR REMOVE ALL DETOUR SIGNS WITHIN THE PROJECT LIMITS WHEN A DETOUR IS NOT IN OPERATION.
STATE FORCES WILL COVER OR REMOVE ALL DETOUR SIGNS OFF THE PROJECT LIMITS WHEN A DETOUR IS NOT IN OPERATION.

R) ENSURE ALL NECESSARY SIGNING IS IN PLACE PRIOR TO ALTERING ANY TRAFFIC PATTERN.

S) INSTALL BLACK ON ORANGE "DIP" SIGNS (W8-2) 500 FT IN ADVANCE OF THE UNEVEN AREA.

T) INSTALL BLACK ON ORANGE "BUMP" SIGNS (W8-1) 500 FT IN ADVANCE OF THE UNEVEN AREA.

TRAFFIC CONTROL DEVICES

U) WHEN USING ROADWAY STANDARD NO. 1101.02 SHEET 1 OF 7, DRUMS MAY BE USED IN LIEU OF CONES ON ALL ROADS.

V) SPACE CHANNELIZING DEVICES IN WORK AREAS NO GREATER THAN TWICE THE POSTED SPEED LIMIT (MPH), EXCEPT 10 FT ON-CENTER IN RADII, AND 3 FT OFF THE EDGE OF AN OPEN TRAVELWAY, WHEN LANE CLOSURES ARE NOT IN EFFECT.

W) PLACE TYPE III BARRICADES, WITH "ROAD CLOSED" SIGN R11-2 ATTACHED, OF SUFFICIENT LENGTH TO CLOSE ENTIRE ROADWAY. STAGGER OR OVERLAP BARRICADES TO ALLOW FOR INGRESS OR EGRESS.

X) PLACE SETS OF THREE DRUMS PERPENDICULAR TO THE EDGE OF THE TRAVELWAY ON 500 FT CENTERS WHEN UNOPENED LANES ARE CLOSED TO TRAFFIC. THESE DRUMS SHALL BE IN ADDITION TO CHANNELIZING DEVICES.

PAVEMENT MARKINGS AND MARKERS

Y) INSTALL PAVEMENT MARKINGS AND PAVEMENT MARKERS ON THE FINAL SURFACE AS FOLLOWS:

ROAD NAME	MARKING	MARKER
1. -L-	POLYUREA	SNOWPLOWABLE
2. -Y1-	THERMOPLASTIC	PERMANENT RAISED
3. -Y2-	POLYUREA	PERMANENT RAISED
4. -SR-	PAINT	PERMANENT RAISED

Z) INSTALL TEMPORARY PAVEMENT MARKINGS AND TEMPORARY PAVEMENT MARKERS ON INTERIM LAYERS OF PAVEMENT AS FOLLOWS:

ROAD NAME	MARKING	MARKER
1. ALL ROADS	PAINT	TEMPORARY RAISED

AA) PLACE AT LEAST TWO APPLICATIONS OF PAINT PAVEMENT MARKINGS ON THE FINAL WEARING SURFACE ON NEW ASPHALT PAVEMENT. PLACE ADDITIONAL APPLICATIONS OF PAINT UPON SUFFICIENT DRYING TIME, AS DETERMINED BY THE ENGINEER.

BB) TIE PROPOSED PAVEMENT MARKING LINES TO EXISTING PAVEMENT MARKING LINES.

CC) REPLACE ANY PAVEMENT MARKINGS THAT HAVE BEEN DAMAGED BY THE END OF EACH DAY'S OPERATION.

DD) TRACE THE EDGE OF PROPOSED MONOLITHIC ISLANDS WITH THE PROPER COLOR PAVEMENT MARKING PRIOR TO INSTALLATION OF A PROPOSED MONOLITHIC ISLAND.

EE) PLACE AT LEAST TWO APPLICATIONS OF PAINT ON NEW ASPHALT WITH TEMPORARY TRAFFIC PATTERNS WHICH WILL REMAIN IN PLACE OVER THREE (3) MONTHS. PLACE ADDITIONAL APPLICATIONS OF PAINT UPON SUFFICIENT DRYING TIME, AS DETERMINED BY THE ENGINEER.

TEMPORARY/FINAL SIGNALS

FF) NOTIFY THE ENGINEER TWO (2) MONTHS BEFORE A TRAFFIC SIGNAL INSTALLATION BY OTHERS IS REQUIRED.

GG) SHIFT AND REVISE ALL SIGNAL HEADS AS SHOWN ON THE SIGNAL PLANS.

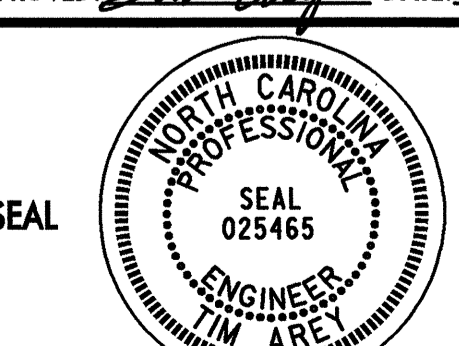
MISCELLANEOUS

HH) IN THE EVENT A TIE-IN CANNOT BE MADE IN ONE DAYS TIME, BRING THE TIE-IN AREA TO AN APPROPRIATE ROADWAY ELEVATION, AS DETERMINED BY THE ENGINEER. PLACE BLACK ON ORANGE "LOOSE GRAVEL" SIGNS (W8-7) AND BLACK ON ORANGE "PAVEMENT ENDS" SIGNS (W8-3) 500 FT AND 1000 FT RESPECTIVELY IN ADVANCE OF THE UNEVEN AREAS. USE DRUMS TO DELINEATE THE EDGE OF ROADWAY ALONG UNPAVED AREAS.

II) PLACE DRUMS TO DELINEATE EXISTING AND PROPOSED ISLANDS AFTER REMOVAL AND BEFORE INSTALLATION.

PLAN PREPARED IN THE OFFICE OF:

Kubilins
TRANSPORTATION GROUP, INC.
800 W. HILL STREET, SUITE 202
CHARLOTTE, NC 28208
PH: (980) 321-0202 FAX: (980) 321-0108

APPROVED: <i>[Signature]</i> DATE: 5/1/16	PROJECT NOTES					
	SCALE: NONE DATE: 4/06 DWG. BY: LDA DESIGN BY: TMA REVIEWED BY: TMA	REVISIONS <table border="1" style="width: 100%; border-collapse: collapse;"> <tr> <td style="width: 50%; height: 20px;"></td> <td style="width: 50%;"></td> </tr> <tr> <td style="width: 50%; height: 20px;"></td> <td style="width: 50%;"></td> </tr> </table>				

PHASE I

PROJECT PHASING

PROJ. REFERENCE NO.	SHEET NO.
R-2606A	TCP-3

STEP 1: USING ROADWAY STANDARD DRAWING NO. 1101.02, SHEET 1 OF 7, INSTALL WORK ZONE WARNING SIGNS ON ALL ROADWAYS WITHIN THE PROJECT LIMITS AS SHOWN ON SHEET TCP-16.

STEP 2: BEGIN CONSTRUCTION ON THE FOLLOWING UP TO BUT NOT INCLUDING THE FINAL LAYER OF SURFACE COURSE:

- -L-: ALL LOCATIONS SHOWN ON SHEETS TCP-5 AND TCP-6. PLACE TYPE III BARRICADES AND DRUMS ALONG THE -L- LINE IN THE LOCATIONS SHOWN ON SHEETS TCP-5 AND TCP-6.
- -L-: DUAL BRIDGES OVER MUDDY CREEK.
- -RAMPA-: IN THE LOCATIONS SHOWN ON SHEET TCP-6.
- -LOOPA-: IN THE LOCATIONS SHOWN ON SHEET TCP-6.
- -RAMPC-: IN THE LOCATIONS SHOWN ON SHEET TCP-6.
- -RAMPD-: IN THE LOCATIONS SHOWN ON SHEET TCP-6.
- -Y1-: IN THE LOCATIONS SHOWN ON SHEET TCP-6 INCLUDING THE PROPOSED -Y1- BRIDGE OVER -L-. PLACE TYPE III BARRICADES ON -Y1- IN THE LOCATIONS SHOWN ON SHEET TCP-6 AND BEGIN INSTALLATION OF THE PROPOSED TRAFFIC SIGNAL AT THE -Y1-/-Y2- INTERSECTION.

USING ROADWAY STANDARD DRAWING NO. 1101.02, SHEET 1 OF 7, BEGIN CONSTRUCTION ON THE PROPOSED -Y2- WIDENING UP TO BUT NOT INCLUDING THE FINAL LAYER OF SURFACE COURSE IN THE LOCATIONS SHOWN ON SHEET TCP-6.

STEP 3: CONSTRUCT PROPOSED -SR- UP TO BUT NOT INCLUDING THE FINAL LAYER OF SURFACE COURSE FROM STA. 15+60 +/- -SR- TO 67+35 +/- -SR- INCLUDING THE TEMPORARY -SR- CONNECTOR FROM STA. 67+35 +/- -SR- TO THE EXISTING CEDAR SQUARE ROAD INTERSECTION AS SHOWN ON SHEETS TCP-5 AND TCP-6. ALL EXISTING DRIVEWAY GRADES CROSSING THE PROPOSED -SR- ALIGNMENT SHALL BE PROVIDED WITH A TEMPORARY GRADE, COORDINATED WITH THE ENGINEER, DURING THE CONSTRUCTION OF PROPOSED -SR- AS SHOWN ON SHEETS TCP-5 AND TCP-6.

CONSTRUCT PROPOSED -DRIVE3-, -DRIVE4-, -DRIVE5-, -DRIVE6-, AND -DRIVE7- UP TO BUT NOT INCLUDING THE FINAL LAYER OF SURFACE COURSE IN THE LOCATIONS SHOWN ON SHEETS TCP-5 AND TCP-6.

WITHOUT INTERFERING WITH EXISTING TRAFFIC PATTERNS ON -Y-, INSTALL STAGE I OF THE PROPOSED BOX CULVERT AT STA. 46+00 +/- -L- NO CLOSER THAN 30' FROM THE EDGE OF TRAVEL WAY ON -Y- AS SHOWN ON SHEET TCP-5.

INTERMEDIATE CONTRACT TIME: COMPLETE THE WORK REQUIRED OF PHASE I, STEP 4 IN 120 CONSECUTIVE CALENDAR DAYS. (SEE SPECIAL PROVISIONS)

STEP 4: USING ROADWAY STANDARD DRAWINGS #1101.03, SHEET 2 OF 9 CLOSE POOLE ROAD AT THE LOCATIONS SHOWN ON SHEET TCP-5, INSET 1 AND INSTALL STAGE II OF THE PROPOSED BOX CULVERT AT STA. 46+00 +/- -L- AND CONSTRUCT THE -SR- TIE-IN FROM STA. 10+00 +/- -SR- TO STA. 15+60 +/- -SR- AS SHOWN ON SHEET TCP-5.

PHASE II

STEP 1: INSTALL TEMPORARY PAINT PAVEMENT MARKINGS AND MARKERS ON -SR- AND ON THE TEMPORARY -SR- CONNECTOR AS SHOWN ON SHEETS TCP-7 AND TCP-8. OPEN -Y- AND PROPOSED -SR- TO TRAFFIC AS SHOWN ON SHEETS TCP-7 AND TCP-8.

CONSTRUCT THE PROPOSED EXISTING POOLE ROAD CUL-DE-SAC AS SHOWN ON SHEET TCP-7.

INTERMEDIATE CONTRACT TIME: COMPLETE THE WORK REQUIRED OF PHASE II, STEP 2 IN 210 CONSECUTIVE CALENDAR DAYS. (SEE SPECIAL PROVISIONS)

NOTE: PHASE II, STEP 2 MAY BE CONSTRUCTED AT ANY TIME UP TO AND INCLUDING PHASE III, STEP 2. WHEN -Y- IS CLOSED PER PHASE II, STEP 2, THE CONTRACTOR HAS 210 CONSECUTIVE CALENDAR DAYS TO COMPLETE THE WORK OF PHASE II, STEP 2.

STEP 2: CLOSE -Y- FROM STA. 12+00 +/- TO STA. 18+10 +/- AS SHOWN ON TCP-7. CONSTRUCT -Y- FROM STA. 12+00 +/- -Y- TO STA. 18+10 +/- -Y- UP TO BUT NOT INCLUDING THE FINAL LAYER OF SURFACE COURSE INCLUDING THE PROPOSED -Y- BRIDGE OVER -L- AS SHOWN ON SHEET TCP-7 AND OPEN TO FINAL TRAFFIC PATTERN.

STEP 3: BEGIN CONSTRUCTION ON THE FOLLOWING UP TO BUT NOT INCLUDING THE FINAL LAYER OF SURFACE COURSE AS SHOWN ON SHEETS TCP-7 AND TCP-8:

- STA. 34+75 +/- -L- SB TO STA. 36+60 +/- -L- SB
- STA. 34+75 +/- -L- NB TO STA. 36+60 +/- -L- NB
- STA. 47+47 +/- -L- SB TO STA. 50+04 +/- -L- SB
- STA. 45+68 +/- -L- NB TO STA. 48+54 +/- -L- NB
- STA. 57+70 +/- -L- SB TO STA. 59+40 +/- -L- SB
- STA. 58+72 +/- -L- NB TO STA. 60+03 +/- -L- NB
- STA. 75+01 +/- -L- SB TO STA. 81+50 +/- -L- SB
- STA. 74+00 +/- -L- NB TO STA. 81+50 +/- -L- NB
- STA. 96+30 +/- -L- SB TO STA. 97+20 +/- -L- SB
- STA. 94+70 +/- -L- NB TO STA. 96+60 +/- -L- NB

STEP 4: COMPLETE CONSTRUCTION ON PROPOSED -Y1- UP TO BUT NOT INCLUDING THE FINAL LAYER OF SURFACE COURSE IN THE LOCATIONS SHOWN ON SHEET TCP-6 INCLUDING THE PROPOSED -Y1- BRIDGE OVER -L- AND THE PROPOSED TRAFFIC SIGNAL INSTALLATION AT THE PROPOSED -Y1-/-Y2- INTERSECTION.

COMPLETE CONSTRUCTION ON THE PROPOSED -Y2- WIDENING UP TO BUT NOT INCLUDING THE FINAL LAYER OF SURFACE COURSE IN THE LOCATIONS SHOWN ON SHEET TCP-6.

INTERMEDIATE CONTRACT TIME: COMPLETE THE WORK REQUIRED OF PHASE II, STEP 5 THROUGH STEP 7 IN 120 CONSECUTIVE CALENDAR DAYS. (SEE SPECIAL PROVISIONS)

STEP 5: INSTALL THE TRAFFIC CONTROL DEVICES AND MARKINGS FOR THE PROPOSED 3-WAY STOP CONDITION AT THE -SR-/SR 1928 (CEDAR SQUARE RD.) INTERSECTION AS SHOWN ON SHEET TCP-9 AND SIMULTANEOUSLY CLOSE EXISTING SR 1928 (CEDAR SQUARE RD.) TO THRU TRAFFIC AT THE LOCATIONS SHOWN ON 'DETAIL A', SHEETS TCP-8 AND TCP-11 USING THE OFF SITE DETOUR SIGNED BY STATE FORCES.

STEP 6: CONSTRUCT PROPOSED -Y1- UP TO BUT NOT INCLUDING THE FINAL LAYER OF SURFACE COURSE FROM STA. 40+00 -Y1- TO STA. 46+00 -Y1- AS SHOWN ON SHEETS TCP-8 AND TCP-11.

STEP 7: WITHOUT INTERFERING WITH EXISTING TRAFFIC PATTERNS, INSTALL TEMPORARY PAVEMENT MARKINGS AND MARKERS ON -Y1- IN THE LOCATIONS AND PATTERNS SHOWN ON SHEETS TCP-8, TCP-10, TCP-11, AND TCP-12.

USING ROADWAY STANDARD DRAWING NO. 1101.02, SHEET 1 OF 7, INSTALL TEMPORARY PAVEMENT MARKINGS AND MARKERS ON -Y2- IN THE LOCATIONS AND PATTERNS SHOWN ON SHEETS TCP-8, TCP-12, AND TCP-13, ACTIVATE THE PROPOSED TRAFFIC SIGNAL AT THE -Y1-/-Y2- INTERSECTION, AND OPEN -Y1- AND -Y2- TO THE TRAFFIC PATTERNS SHOWN ON SHEETS TCP-8, TCP-10, TCP-11, TCP-12, AND TCP-13.

STEP 8: CONSTRUCT THE FOLLOWING UP TO BUT NOT INCLUDING THE FINAL LAYER OF SURFACE COURSE WHILE MAINTAINING ONLY RESIDENTIAL ACCESS ALONG THE REMAINING SECTION OF -SR- (STA. 67+90 +/- -SR- TO STA. 81+20 +/- -SR-):

- -SR-: FROM STA. 67+90 +/- -SR- TO STA. 81+20 +/- -SR- (SEE SHEETS TCP-9 AND TCP-10). USE A TEMPORARY GRADE ON CEDAR SQUARE RD. TO MATCH PROPOSED -SR- GRADE AS SHOWN ON SHEET TCP-9.
- -DRIVE1- (SEE SHEET TCP-10 AND TCP-11).
- -DRIVE2- (SEE SHEETS TCP-10).

PHASE III

STEP 1: INSTALL TEMPORARY PAVEMENT MARKINGS AND MARKERS ON -SR- AND -DRIVE1- IN THE LOCATIONS AND PATTERNS SHOWN ON SHEETS TCP-14 AND TCP-15 AND OPEN PROPOSED -SR-, -DRIVE1-, AND -DRIVE2- TO THE PATTERNS SHOWN ON SHEETS TCP-14 AND TCP-15. PERMANENTLY CLOSE CEDAR SQUARE RD. AND REMOVE EXISTING PAVEMENT AND THE TEMPORARY -SR- CONNECTOR AS SHOWN ON TCP-14.

STEP 2: COMPLETE CONSTRUCTION ON ALL REMAINING ROADWAYS UP TO BUT NOT INCLUDING THE FINAL LAYER OF SURFACE COURSE.

STEP 3: PLACE THE FINAL LAYER OF SURFACE COURSE, FINAL PAVEMENT MARKINGS, AND FINAL PAVEMENT MARKERS ON -L-, -RAMP A-, -LOOP A-, -RAMP C-, AND -RAMP D- AS SHOWN ON THE FINAL PAVEMENT MARKING PLANS. INSTALL THE TRAFFIC CONTROL DEVICES FOR THE 'ALL TRAFFIC EXIT' PATTERN AT -RAMP C-. ALSO, SET UP THE TRAFFIC CONTROL DEVICES TO PREVENT ACCESS TO -RAMP A- AND -RAMP D- AS SHOWN ON SHEETS PM-6 AND PM-7.

USING ROADWAY STANDARD DRAWING #1101.02, SHEETS 1 AND 2 OF 7, PLACE THE FINAL LAYER OF SURFACE COURSE, FINAL PAVEMENT MARKINGS, AND FINAL PAVEMENT MARKERS -Y-, -Y1-, -Y2-, AND -SR- AS SHOWN IN THE FINAL PAVEMENT MARKING PLANS AND OPEN ALL ROADWAYS TO THE FINAL PATTERN AS SHOWN IN THE FINAL PAVEMENT MARKING PLANS.

PLAN PREPARED IN THE OFFICE OF:

Kubilins
 TRANSPORTATION GROUP, INC.
 800 W. HILL STREET, SUITE 202
 CHARLOTTE, NC 28208
 PH: (980) 321-0202 FAX: (980) 321-0108

APPROVED: <i>[Signature]</i> DATE: 10/26/06	PHASING									
	SCALE: NONE									
	DATE: 4/06									
	DESIGN BY: TMA									
	REVIEWED BY: TMA									
		<table border="1"> <tr> <th colspan="2">REVISIONS</th> </tr> <tr> <td> </td> <td> </td> </tr> <tr> <td> </td> <td> </td> </tr> <tr> <td> </td> <td> </td> </tr> </table>	REVISIONS							
REVISIONS										

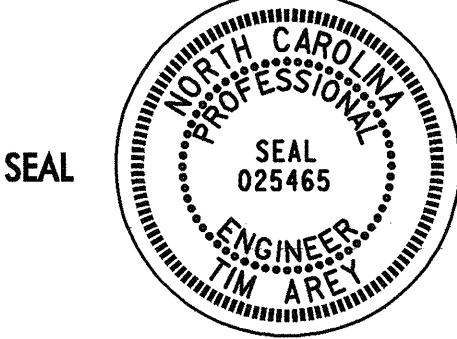

TEMPORARY PAVEMENT MARKING SCHEDULE

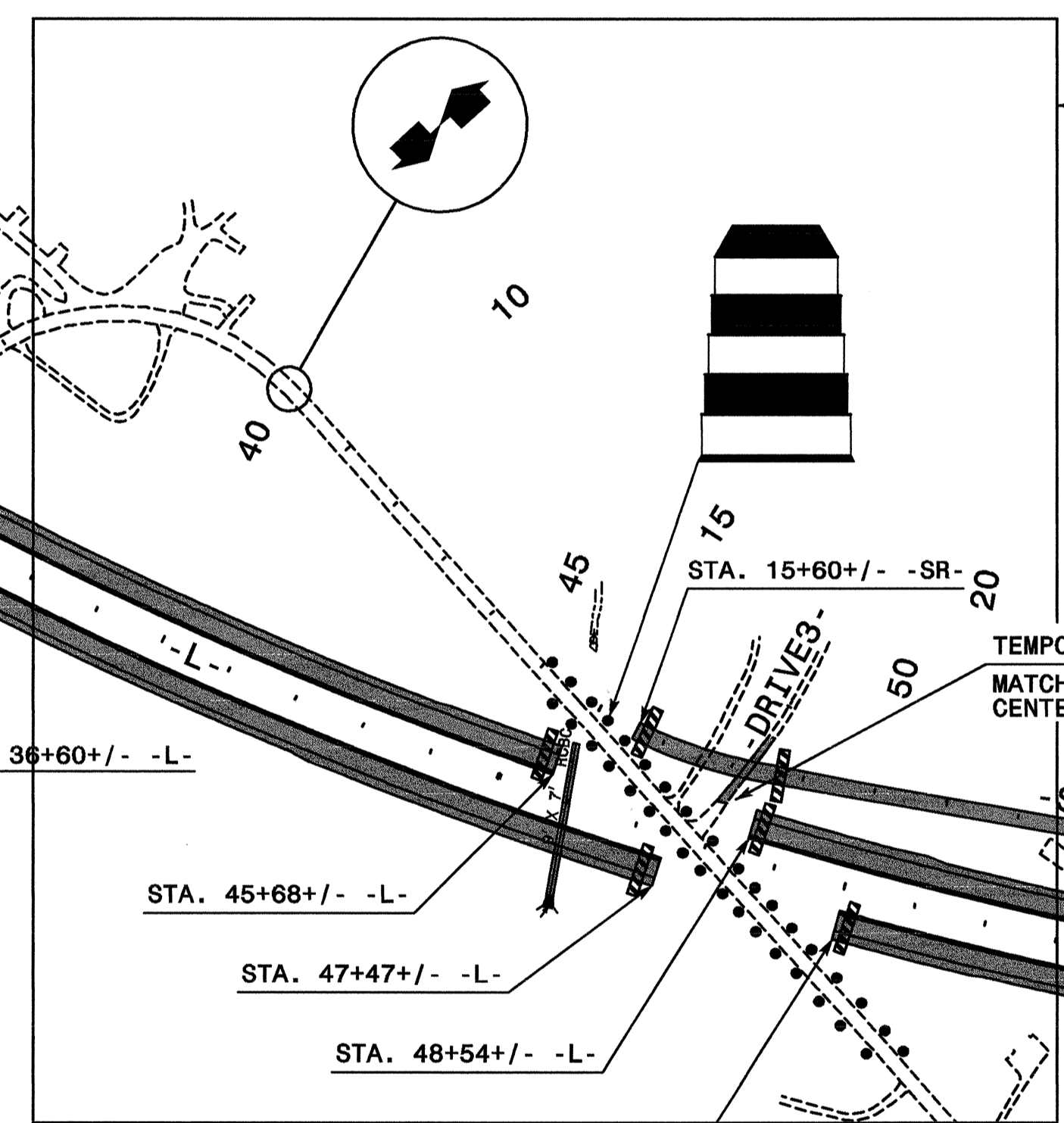
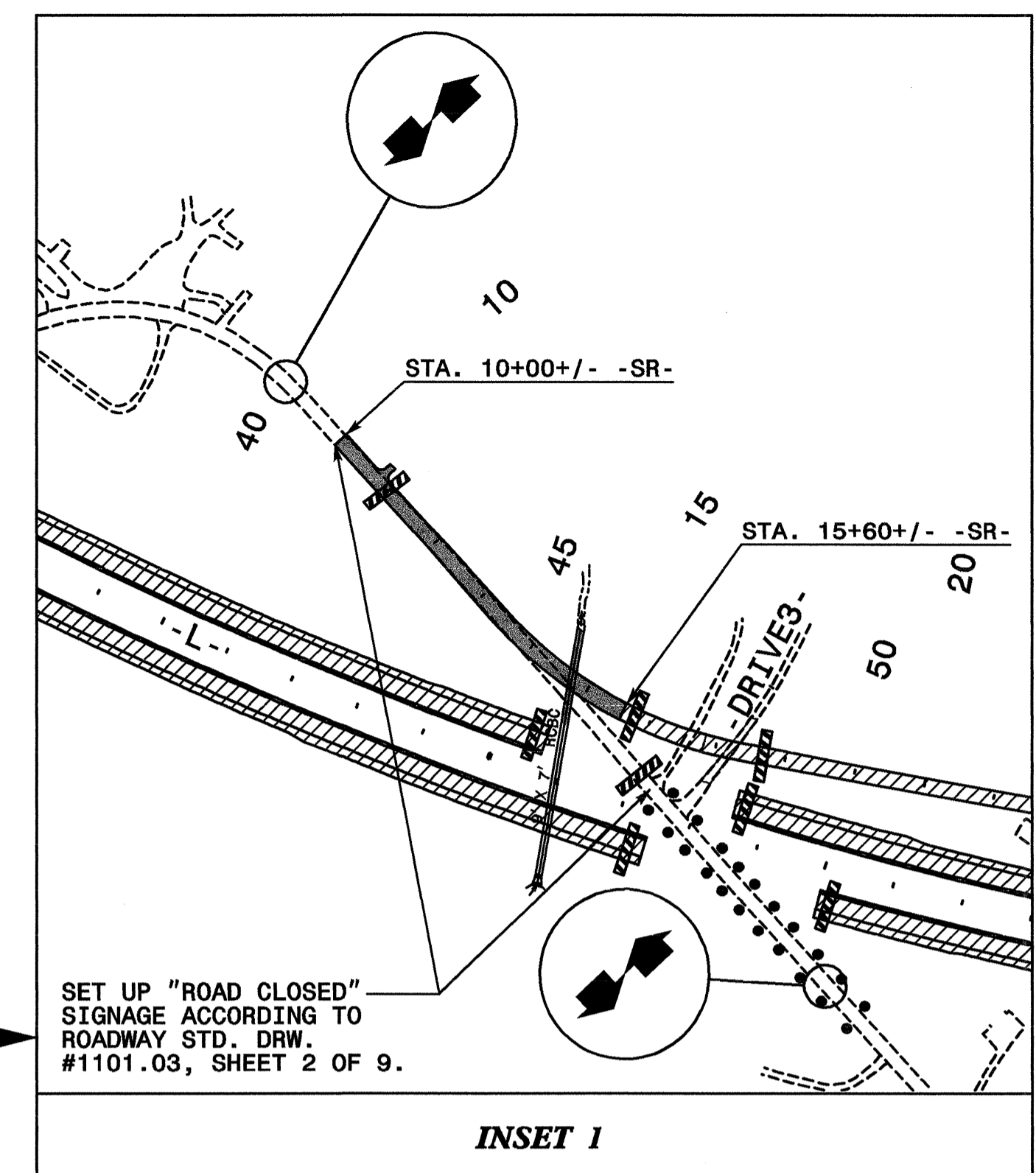
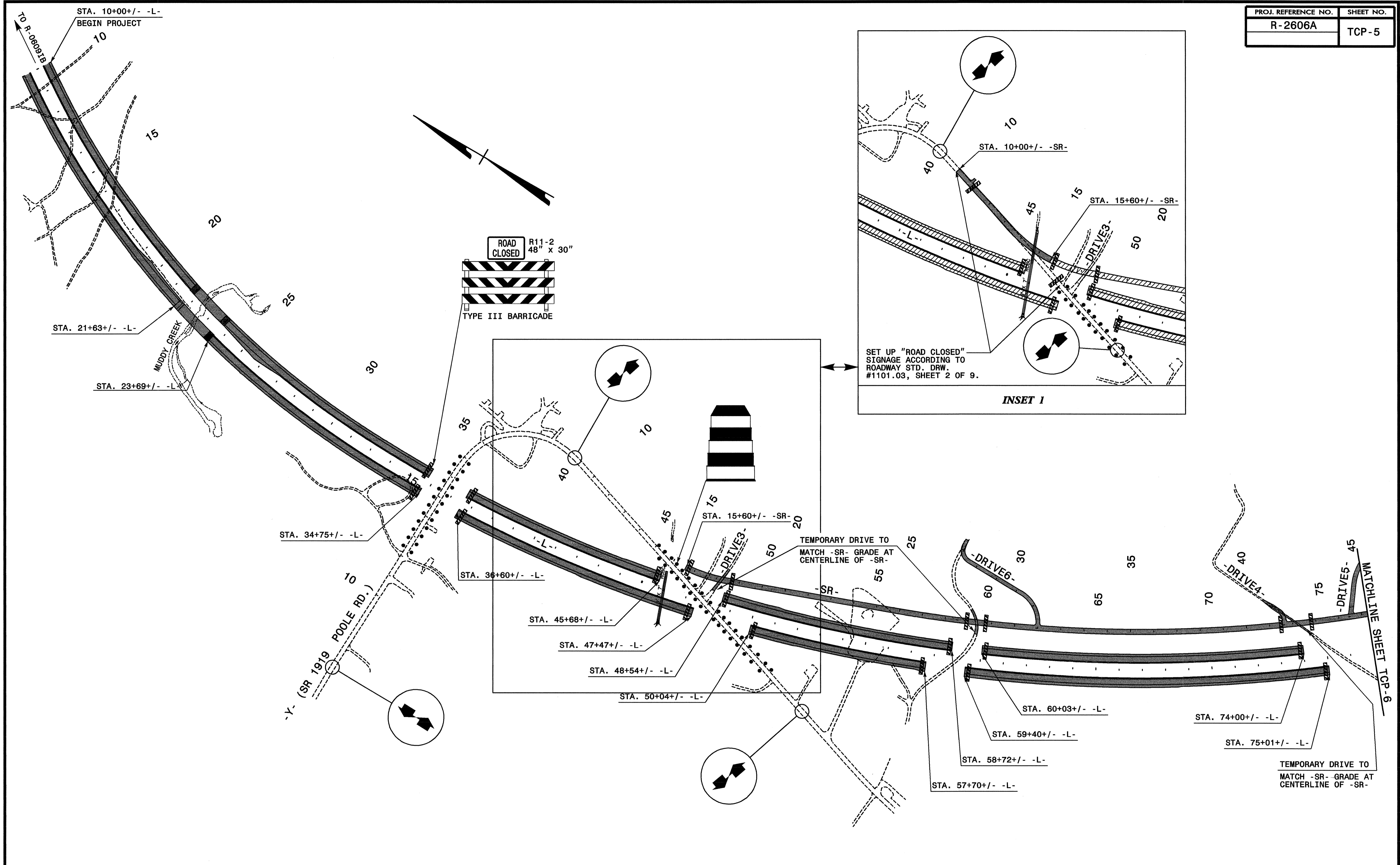
SYMBOL	DESCRIPTION	PAY ITEM QUANTITY BREAKDOWN		TOTAL QUANTITY	
INTERMEDIATE					
PAVEMENT MARKINGS					
PAINT (4") (100 MM)					
PA	WHITE EDGELINE (2X)	51200	LF	(15606 M)	
PB	YELLOW EDGELINE (2X)	2000	LF	(610 M)	
PC	10 FT. WHITE SKIP (2X)	100	LF	(30 M)	
PD	2 FT. WHITE MINISKIP (2X)	204	LF	(62 M)	
PE	WHITE SOLID LANE LINE (2X)	1894	LF	(577 M)	
PF	10 FT. YELLOW SKIP (2X)	1364	LF	(416 M)	
PH	YELLOW SINGLE CENTER (2X)	5456	LF	(1663 M)	
PI	YELLOW DOUBLE CENTER (2X)	36000	LF	(10973 M)	
				TOTAL	98218 LF (29937 M)
PAINT (8") (200 MM)					
PV	YELLOW DIAGONAL (2X)	900	LF	(274 M)	
				TOTAL	900 LF (274 M)
PAINT (24") (600 MM)					
P4	WHITE STOPBAR (2X)	350	LF	(107 M)	
				TOTAL	350 LF (107 M)
PAINT MARKING CHARACTERS					
QI	ALPHANUMERIC CHAR. (2X)	4	EA		
				TOTAL	4 EA
PAINT MARKING SYMBOLS					
QA	LEFT TURN ARROW (2X)	38	EA		
QB	RIGHT TURN ARROW (2X)	18	EA		
				TOTAL	56 EA
MARKERS					
TEMPORARY RAISED PAVEMENT MARKERS					
MH	YELLOW & YELLOW	380	EA		
MI	CRYSTAL & RED	100	EA		
				TOTAL	480 EA

- NOTES: 1. AS DIRECTED BY THE ENGINEER, TEMPORARY PAVEMENT MARKING (PAINT) MAY BE USED TO STRIPE THE FINAL TRAFFIC PATTERN ON -Y1- AND -Y2- (US 311). THE TEMPORARY PAVEMENT MARKING SCHEDULE INCLUDES QUANTITIES FOR PLACING TWO APPLICATIONS OF PAINT ON THE FINAL SURFACE OF NEW ASPHALT WITH PERMANENT TRAFFIC PATTERN WHICH WILL REMAIN IN PLACE UNTIL THE PROPOSED FINAL PAVEMENT MARKING (THERMOPLASTIC) IS APPLIED.
2. FOR EACH PAINT PAVEMENT MARKING ITEM, 1X IMPLIES A SINGLE APPLICATION, 2X IMPLIES TWO APPLICATIONS, AND 3X IMPLIES THREE APPLICATIONS.

PLAN PREPARED IN THE OFFICE OF:

Kubilins
 TRANSPORTATION GROUP, INC.
 800 W. HILL STREET, SUITE 202
 CHARLOTTE, NC 28208
 PH: (980) 321-0202 FAX: (980) 321-0108

APPROVED: <i>[Signature]</i>	DATE: 5/3/06	TEMPORARY PAVEMENT MARKING SCHEDULE									
	SCALE: NONE										
	DATE: 4/06										
	DWG. BY: LDA										
	DESIGN BY: TMA										
REVIEWED BY: TMA		<table border="1" style="width: 100%; border-collapse: collapse;"> <tr> <th colspan="2">REVISIONS</th> </tr> <tr> <td style="width: 50%;"> </td> <td style="width: 50%;"> </td> </tr> <tr> <td> </td> <td> </td> </tr> <tr> <td> </td> <td> </td> </tr> </table>		REVISIONS							
REVISIONS											



PLAN PREPARED IN THE OFFICE OF:

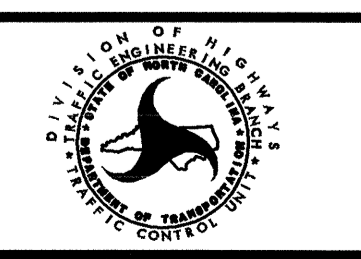
Kubilins
 TRANSPORTATION GROUP, INC.
 800 W. HILL STREET, SUITE 202
 CHARLOTTE, NC 28208
 PH: (980) 321-0202 FAX: (980) 321-0108

APPROVED: *[Signature]* DATE: *5/16/06*

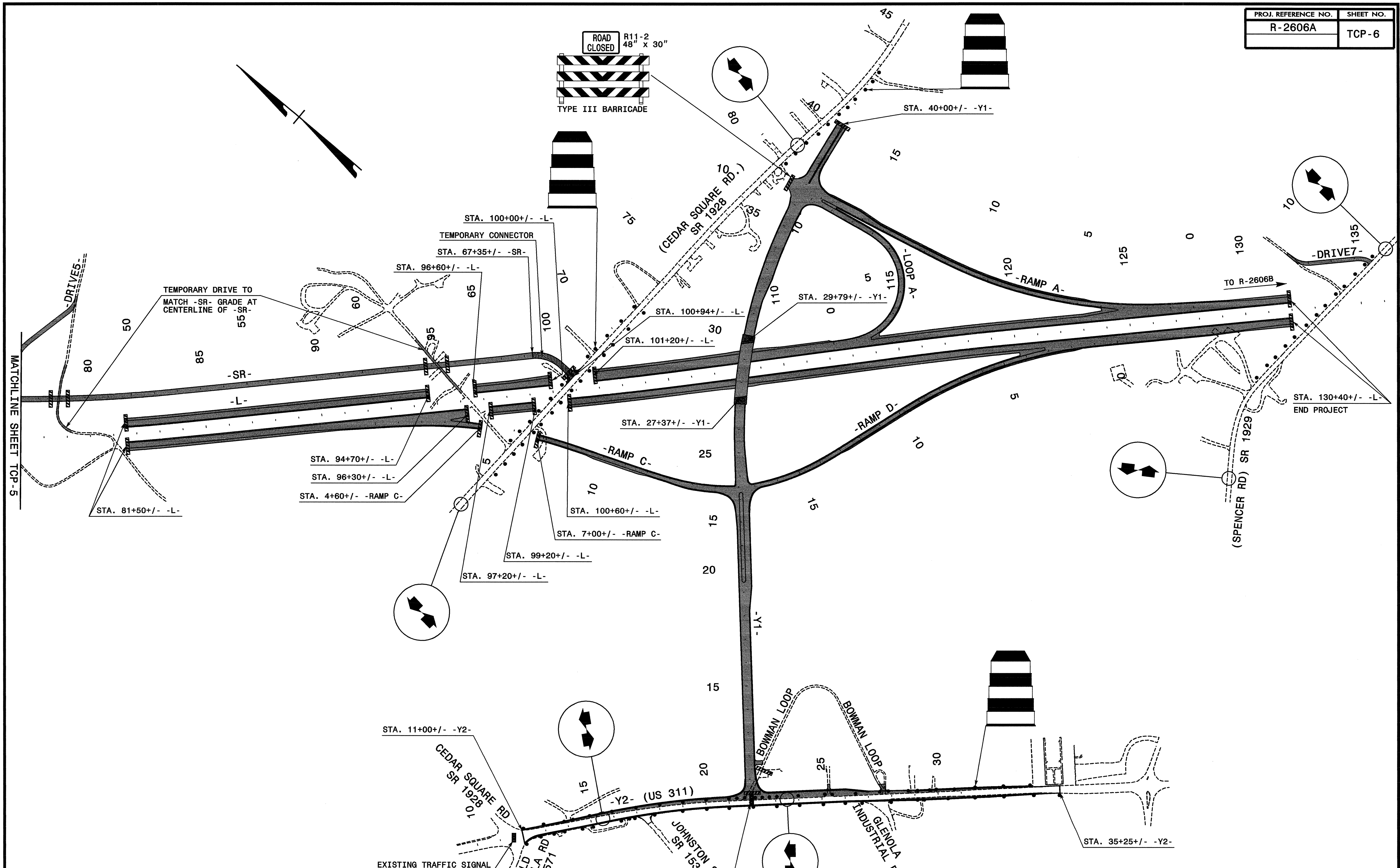
SEAL:

PHASE I OVERVIEW
 SHEET 1 OF 2

SCALE:	NONE
DATE:	4/06
DWG. BY:	LDA
DESIGN BY:	TMA
REVIEWED BY:	TMA



REVISIONS	



MATCHLINE SHEET TCP-5

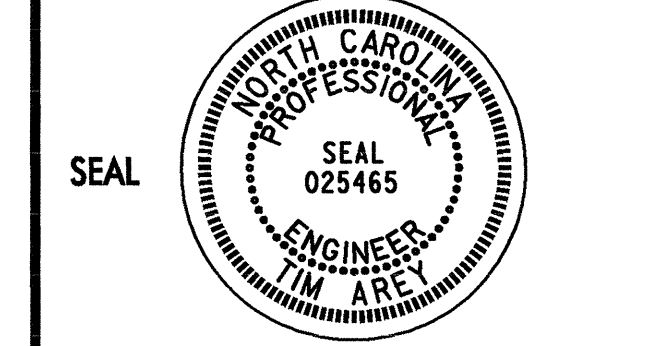
TO R-2606B

(SPENCER RD) SR 1929

PLAN PREPARED IN THE OFFICE OF:

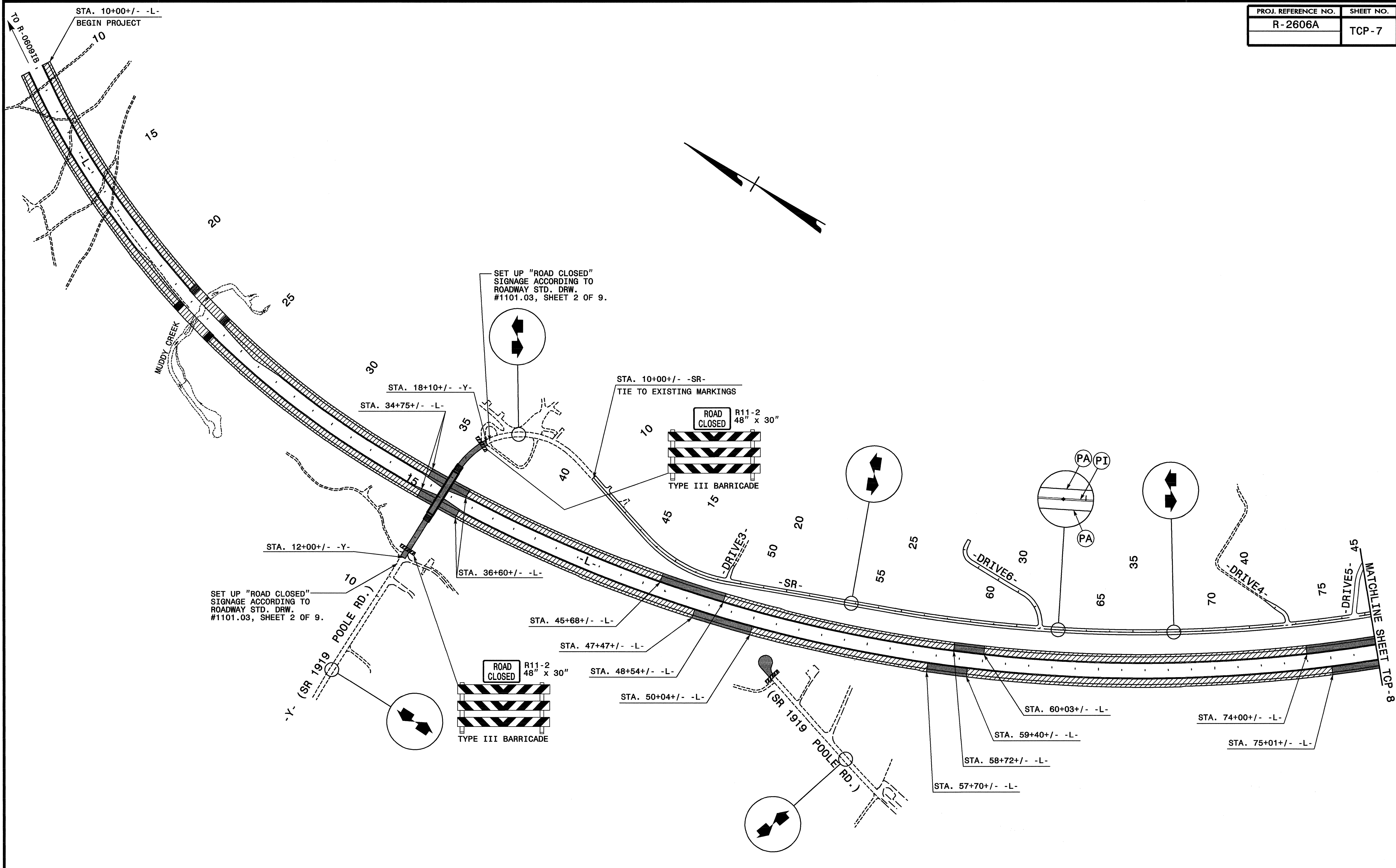
Kubilins
 TRANSPORTATION GROUP, INC.
 800 W. HILL STREET, SUITE 202
 CHARLOTTE, NC 28208
 PH: (980) 321-0202 FAX: (980) 321-0108

APPROVED: *[Signature]* DATE: 5/1/06



PHASE I OVERVIEW
SHEET 2 OF 2

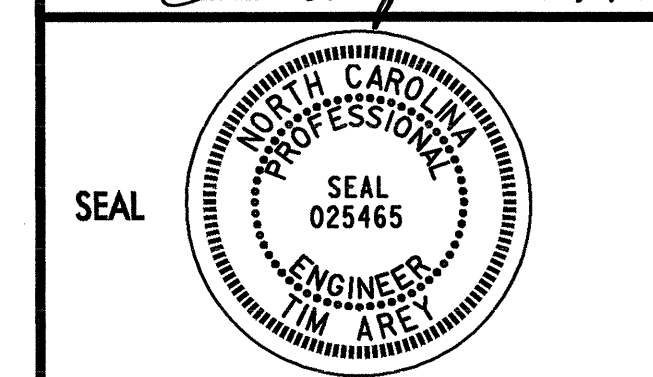
SCALE: NONE		<table border="1"> <tr> <th colspan="2">REVISIONS</th> </tr> <tr> <td> </td> <td> </td> </tr> <tr> <td> </td> <td> </td> </tr> <tr> <td> </td> <td> </td> </tr> <tr> <td> </td> <td> </td> </tr> </table>	REVISIONS									
REVISIONS												
DATE: 4/06												
DWG. BY: LDA												
DESIGN BY: TMA												
REVIEWED BY: TMA												



PLAN PREPARED IN THE OFFICE OF:

Kubilins
 TRANSPORTATION GROUP, INC.
 800 W. HILL STREET, SUITE 202
 CHARLOTTE, NC 28208
 PH: (980) 321-0202 FAX: (980) 321-0108

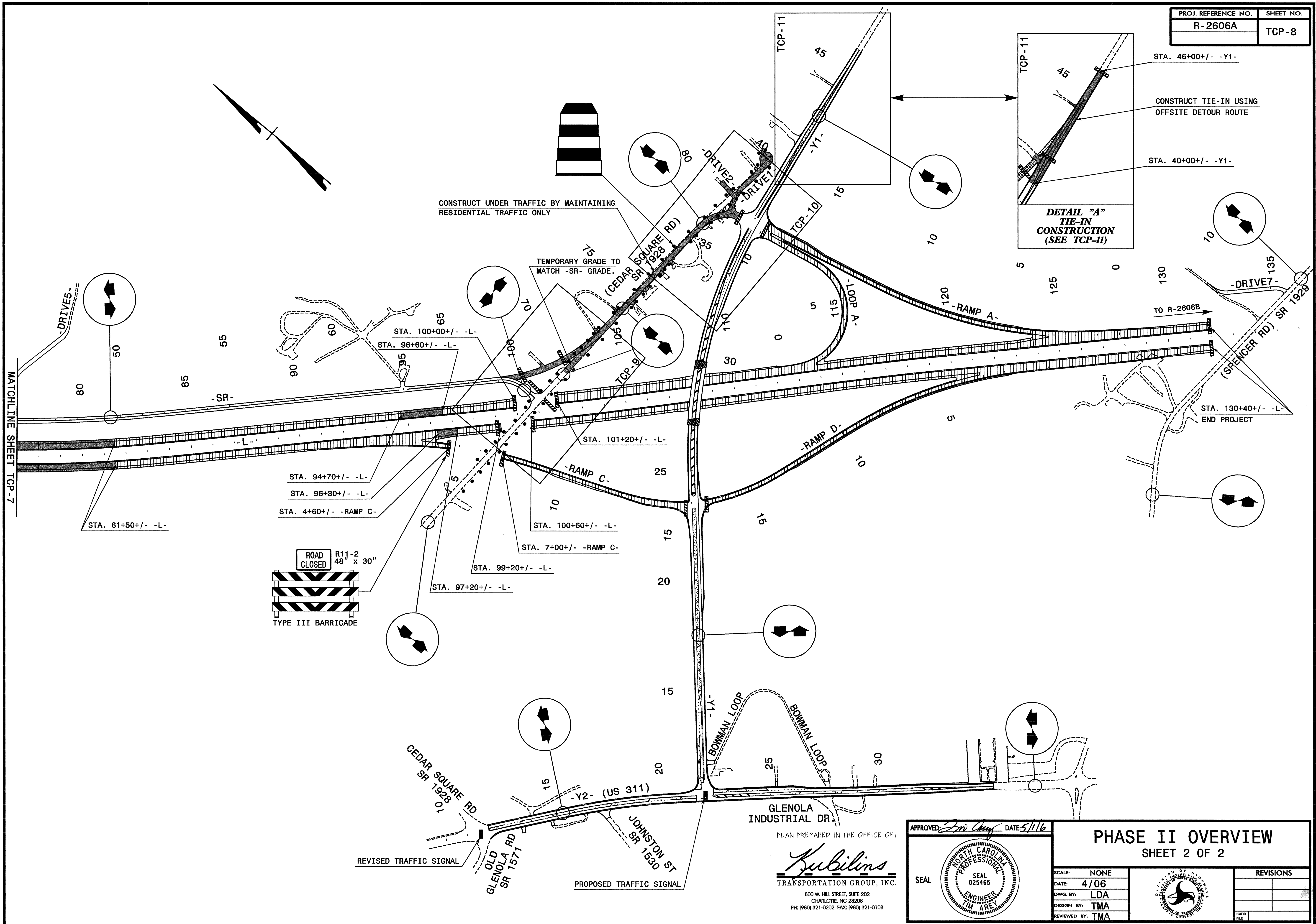
APPROVED: *[Signature]* DATE: 5/16



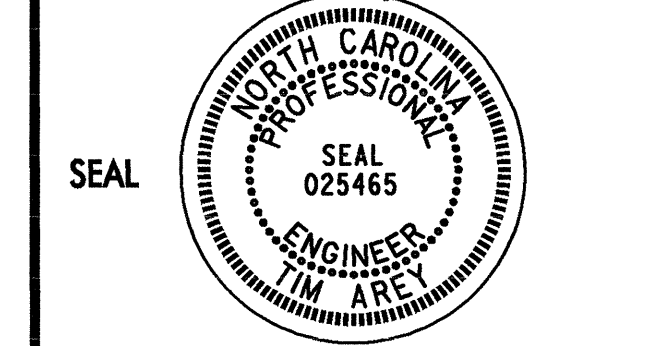
PHASE II OVERVIEW
 SHEET 1 OF 2

SCALE: NONE
 DATE: 4/06
 DWG. BY: LDA
 DESIGN BY: TMA
 REVIEWED BY: TMA

REVISIONS	



APPROVED: *[Signature]* DATE: 5/1/16



PHASE II OVERVIEW		REVISIONS										
SHEET 2 OF 2												
SCALE:	NONE	<table border="1"> <tr><td> </td><td> </td></tr> <tr><td> </td><td> </td></tr> <tr><td> </td><td> </td></tr> <tr><td> </td><td> </td></tr> <tr><td> </td><td> </td></tr> </table>										
DATE:	4/06											
DWG. BY:	LDA											
DESIGN BY:	TMA											
REVIEWED BY:	TMA											

PLAN PREPARED IN THE OFFICE OF:

Kubilins

TRANSPORTATION GROUP, INC.

800 W. HILL STREET, SUITE 202
CHARLOTTE, NC 28203
PH: (980) 321-0202 FAX: (980) 321-0108

REVISOR'S NAME

REVISOR'S DATE

REVISOR'S NO.

REVISOR'S DESCRIPTION

REVISOR'S SIGNATURE

REVISOR'S SEAL

REVISOR'S LICENSE NO.

REVISOR'S EXPIRES

REVISOR'S TITLE

REVISOR'S FIRM

REVISOR'S ADDRESS

REVISOR'S PHONE

REVISOR'S FAX

REVISOR'S EMAIL

REVISOR'S WEBSITE

REVISOR'S SOCIAL MEDIA

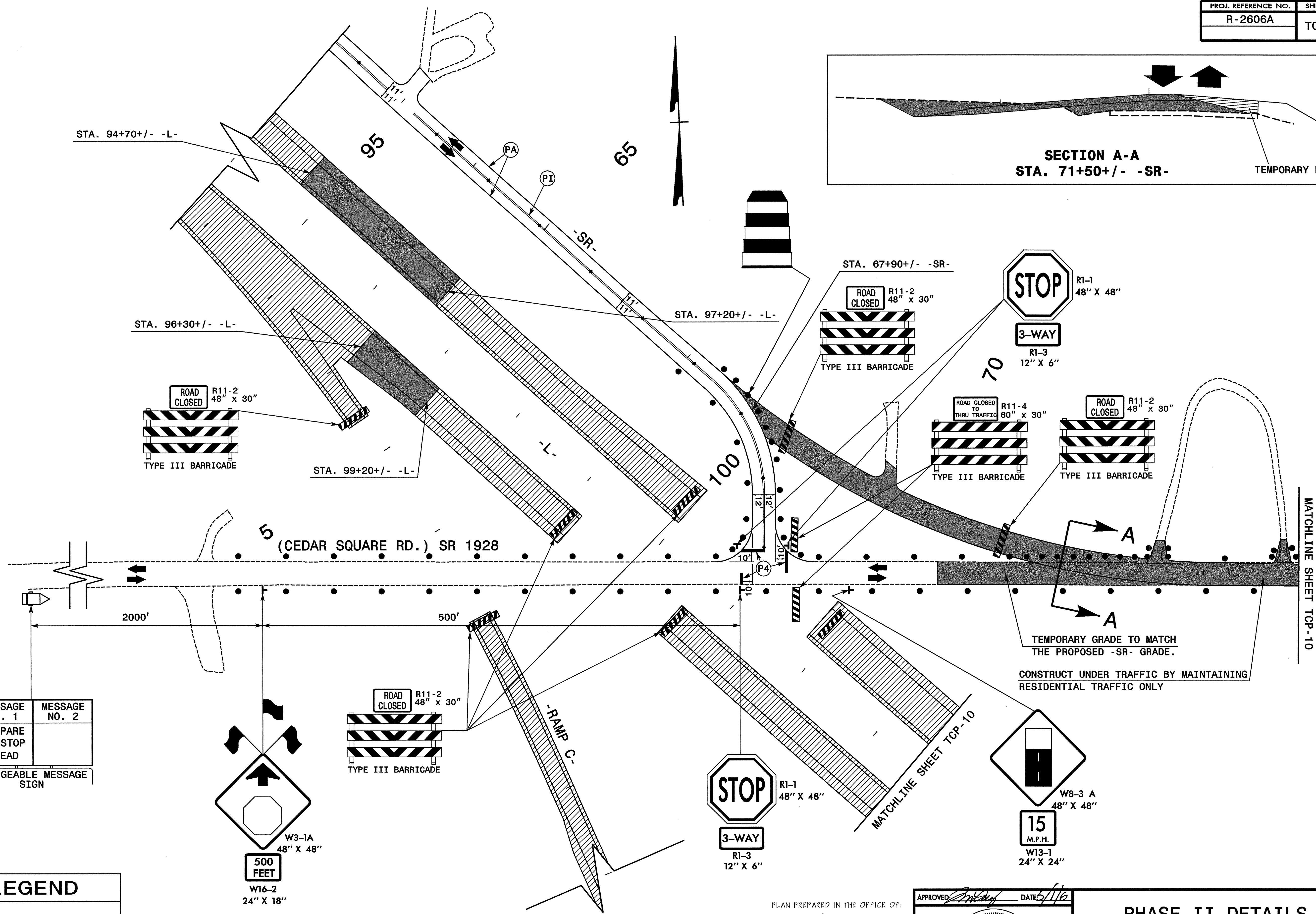
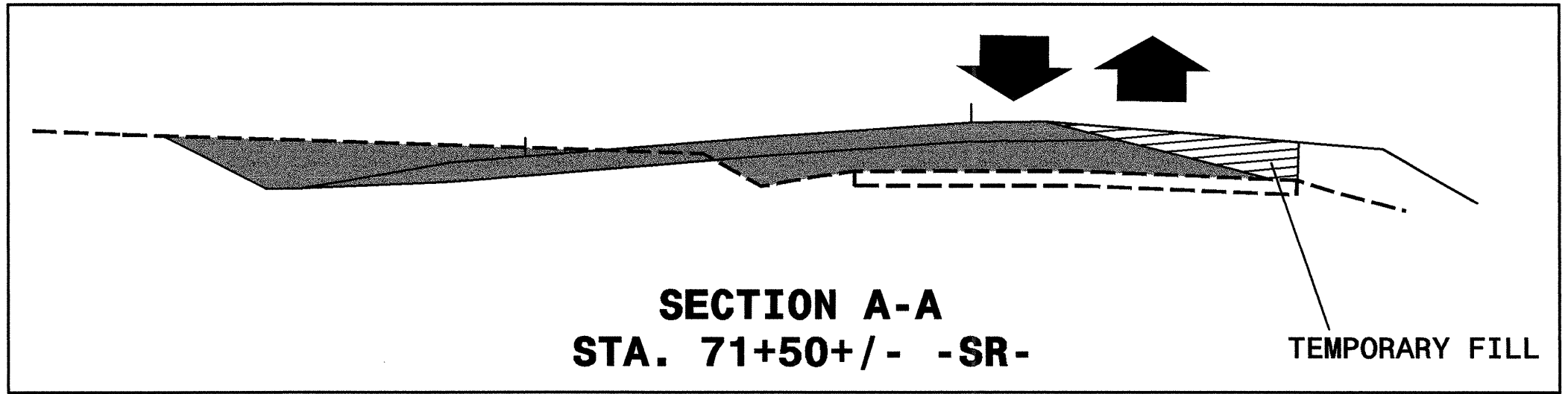
REVISOR'S CONTACT INFO

REVISOR'S NOTES

REVISOR'S COMMENTS

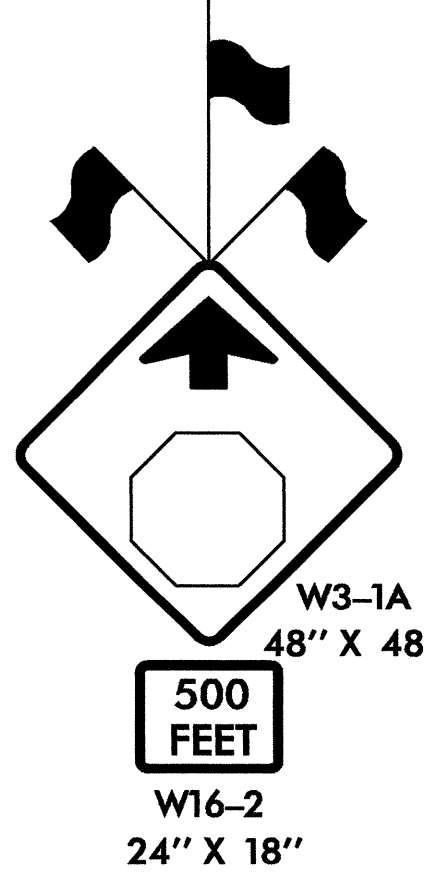
REVISOR'S REVISIONS

REVISOR'S APPROVALS



TEMPORARY GRADE TO MATCH THE PROPOSED -SR- GRADE.
CONSTRUCT UNDER TRAFFIC BY MAINTAINING RESIDENTIAL TRAFFIC ONLY

MESSAGE NO. 1	MESSAGE NO. 2
PREPARE TO STOP AHEAD	
CHANGEABLE MESSAGE SIGN	



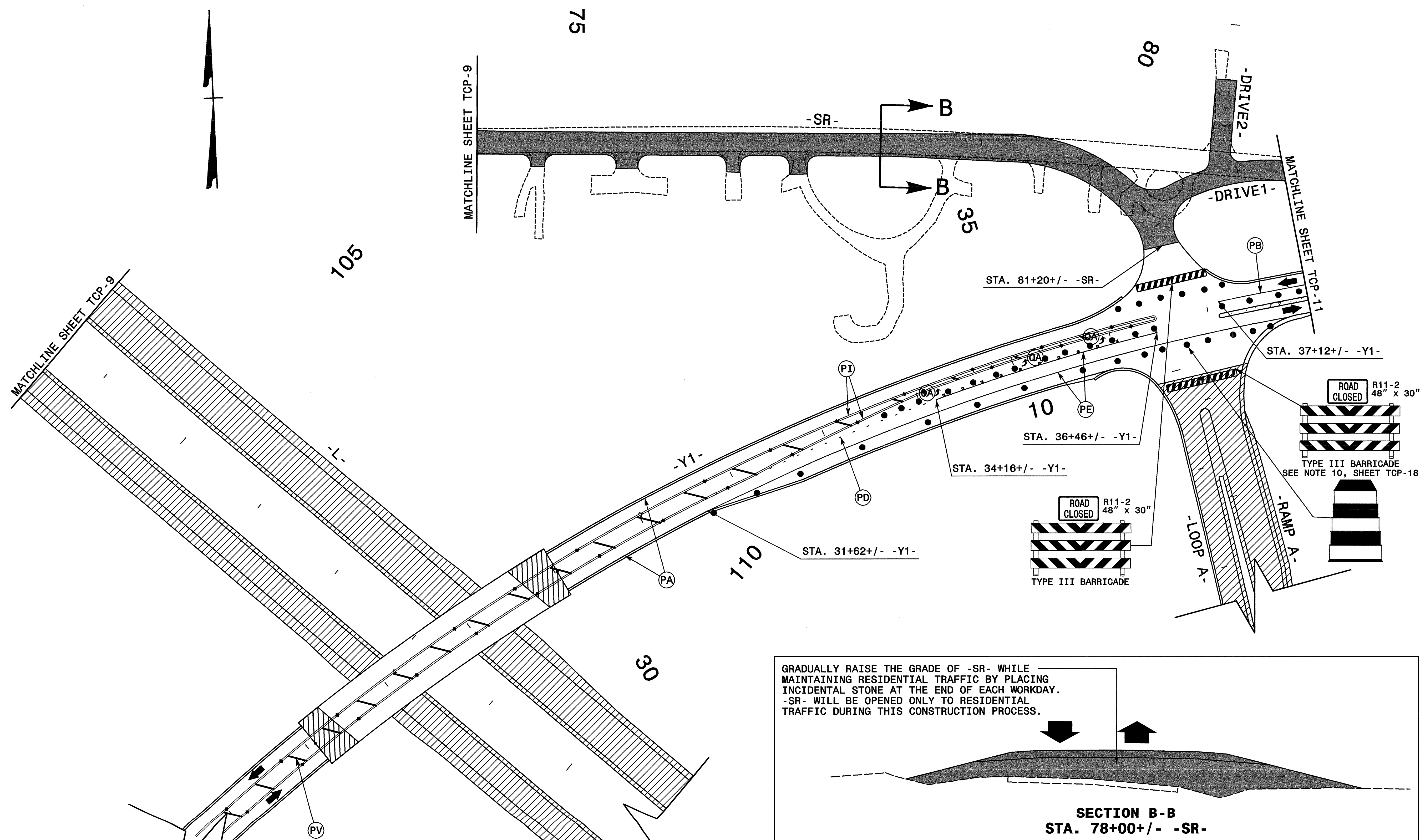
LEGEND	
	NEW CONSTRUCTION
	ONGOING CONSTRUCTION
	REMOVAL OF EXISTING PAVEMENT

PLAN PREPARED IN THE OFFICE OF:
Kubilins
TRANSPORTATION GROUP, INC.
800 W. HILL STREET, SUITE 202
CHARLOTTE, NC 28208
PH: (980) 321-0202 FAX: (980) 321-0108

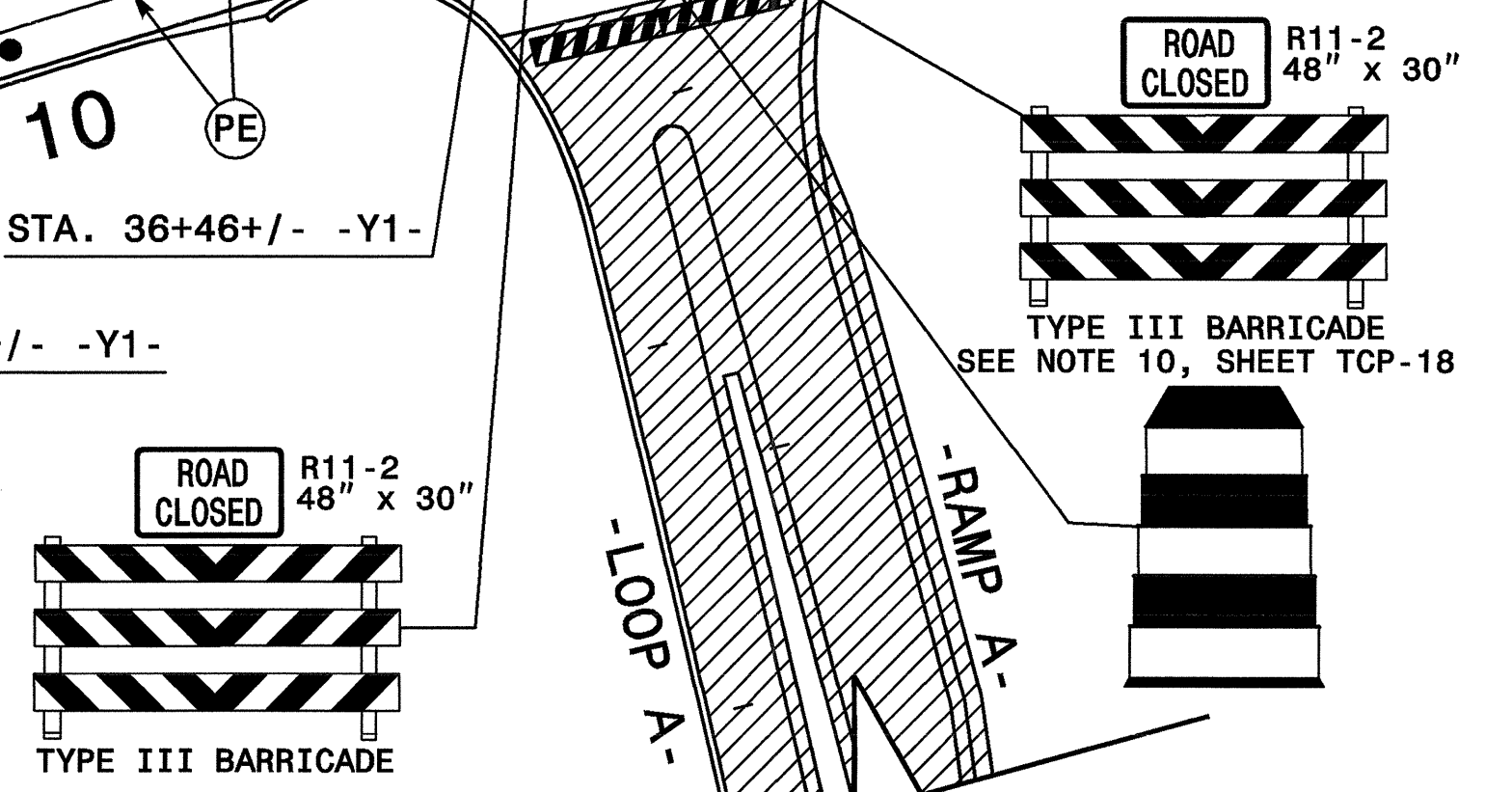
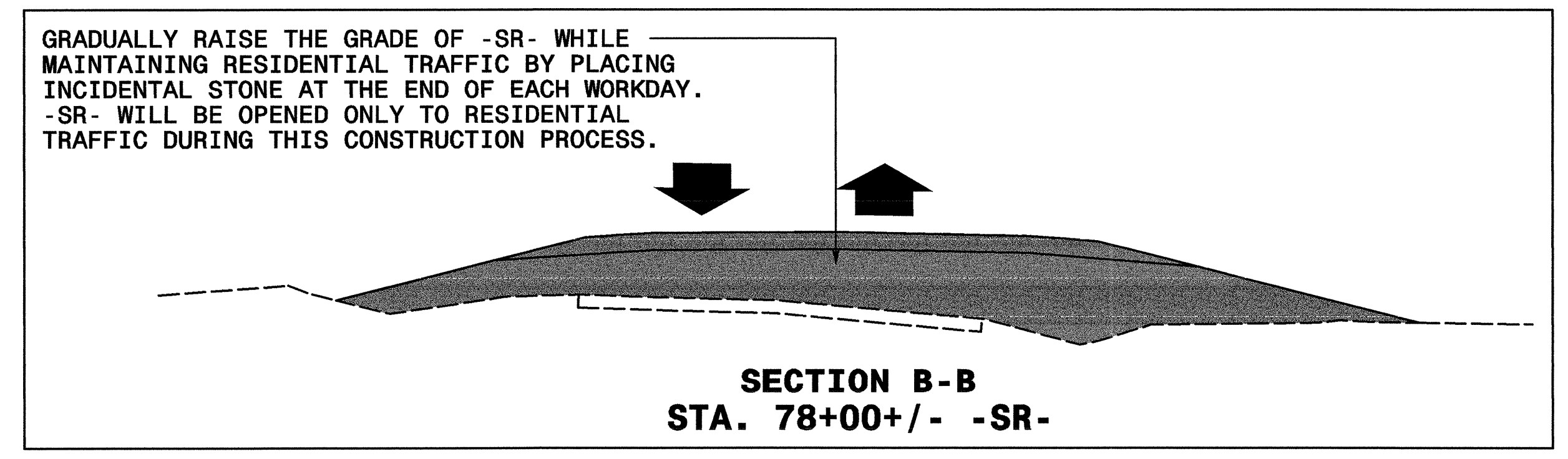
APPROVED: *[Signature]* DATE: 4/16

SEAL
TIMOTHY AREY
ENGINEER
STATE OF NORTH CAROLINA
LICENSE NO. 025465

PHASE II DETAILS		REVISIONS
SCALE: NONE	DATE: 4/06	
DWG. BY: LDA	DESIGN BY: TMA	
REVIEWED BY: TMA		



LEGEND	
	NEW CONSTRUCTION
	ONGOING CONSTRUCTION
	REMOVAL OF EXISTING PAVEMENT

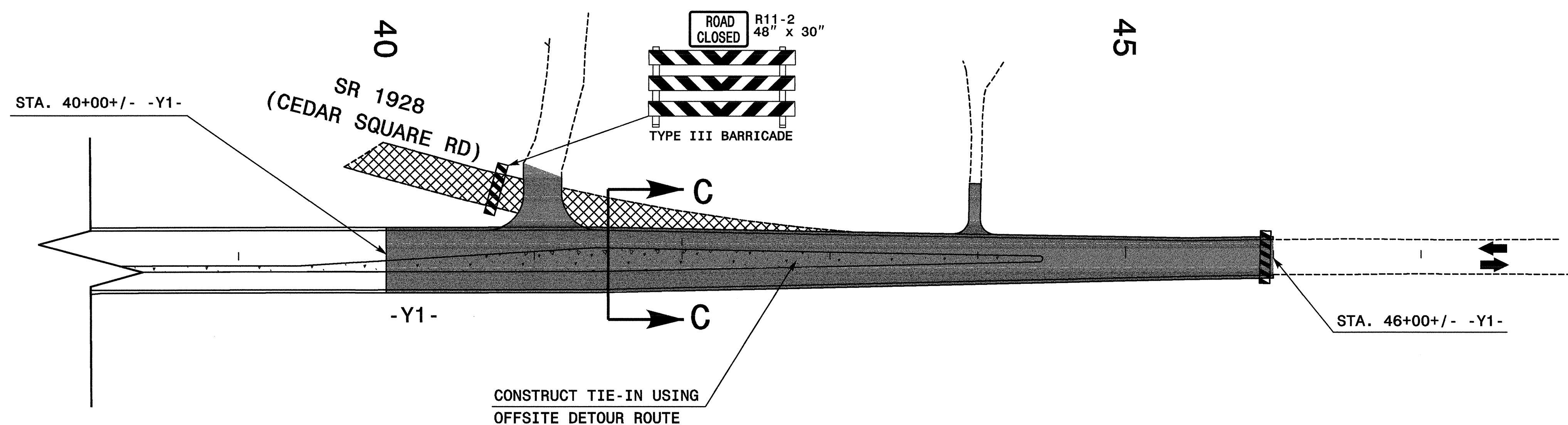
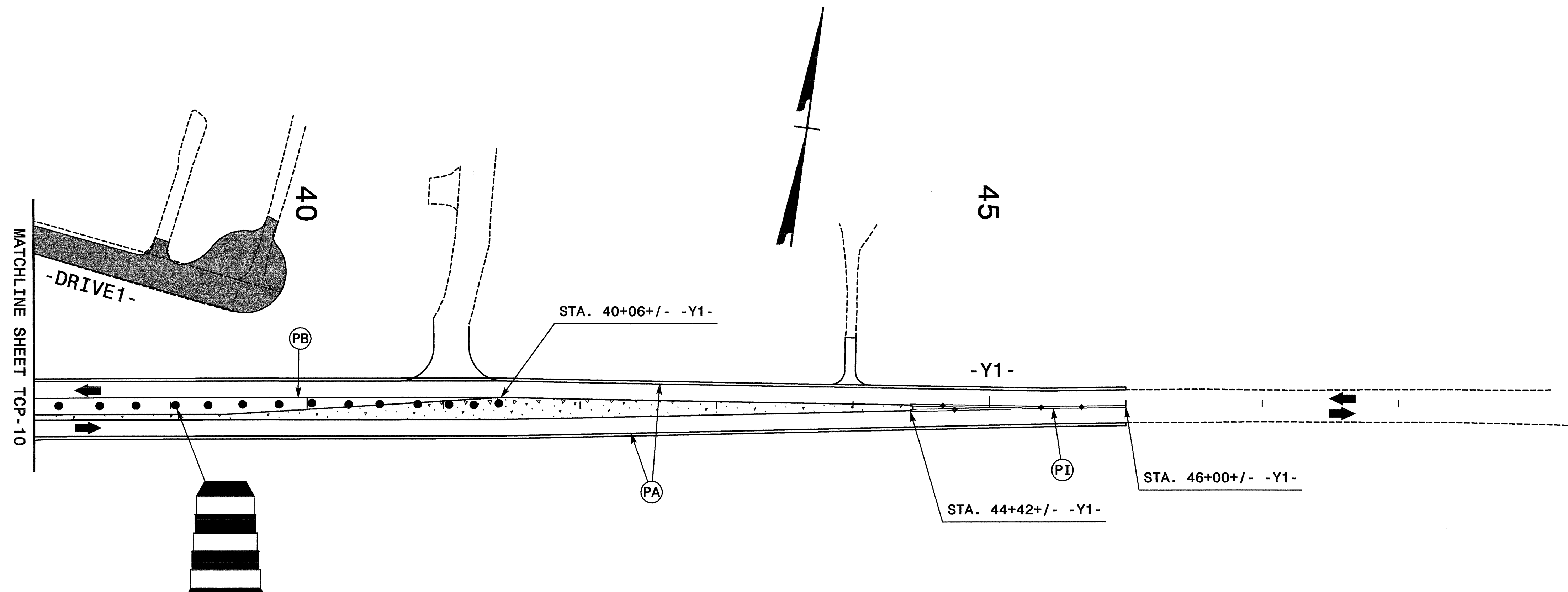


PLAN PREPARED IN THE OFFICE OF:
Kubilins
TRANSPORTATION GROUP, INC.
800 W. HILL STREET, SUITE 202
CHARLOTTE, NC 28208
PH: (980) 321-0202 FAX: (980) 321-0108

APPROVED: *[Signature]* DATE: 5/1/06

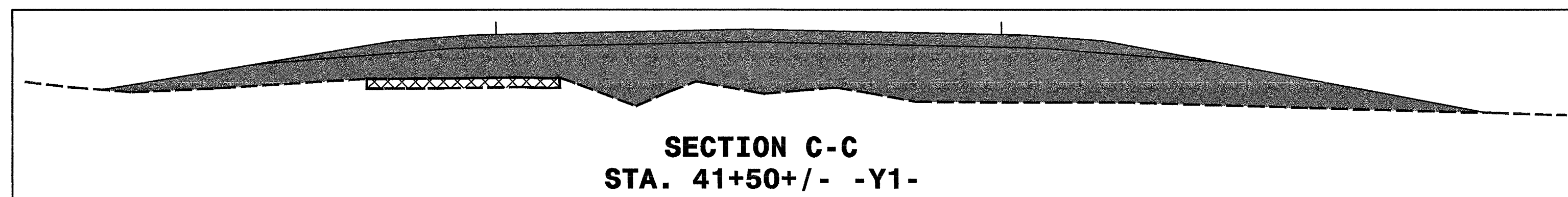
SEAL

PHASE II DETAILS		REVISIONS
SCALE: NONE	DATE: 4/06	
DWG. BY: LDA	DESIGN BY: TMA	
REVIEWED BY: TMA		



**DETAIL "A"
TIE-IN
CONSTRUCTION**

LEGEND	
	NEW CONSTRUCTION
	ONGOING CONSTRUCTION
	REMOVAL OF EXISTING PAVEMENT

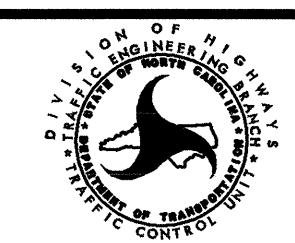


PLAN PREPARED IN THE OFFICE OF:
Kubilins
TRANSPORTATION GROUP, INC.
800 W. HILL STREET, SUITE 202
CHARLOTTE, NC 28208
PH: (980) 321-0202 FAX: (980) 321-0108

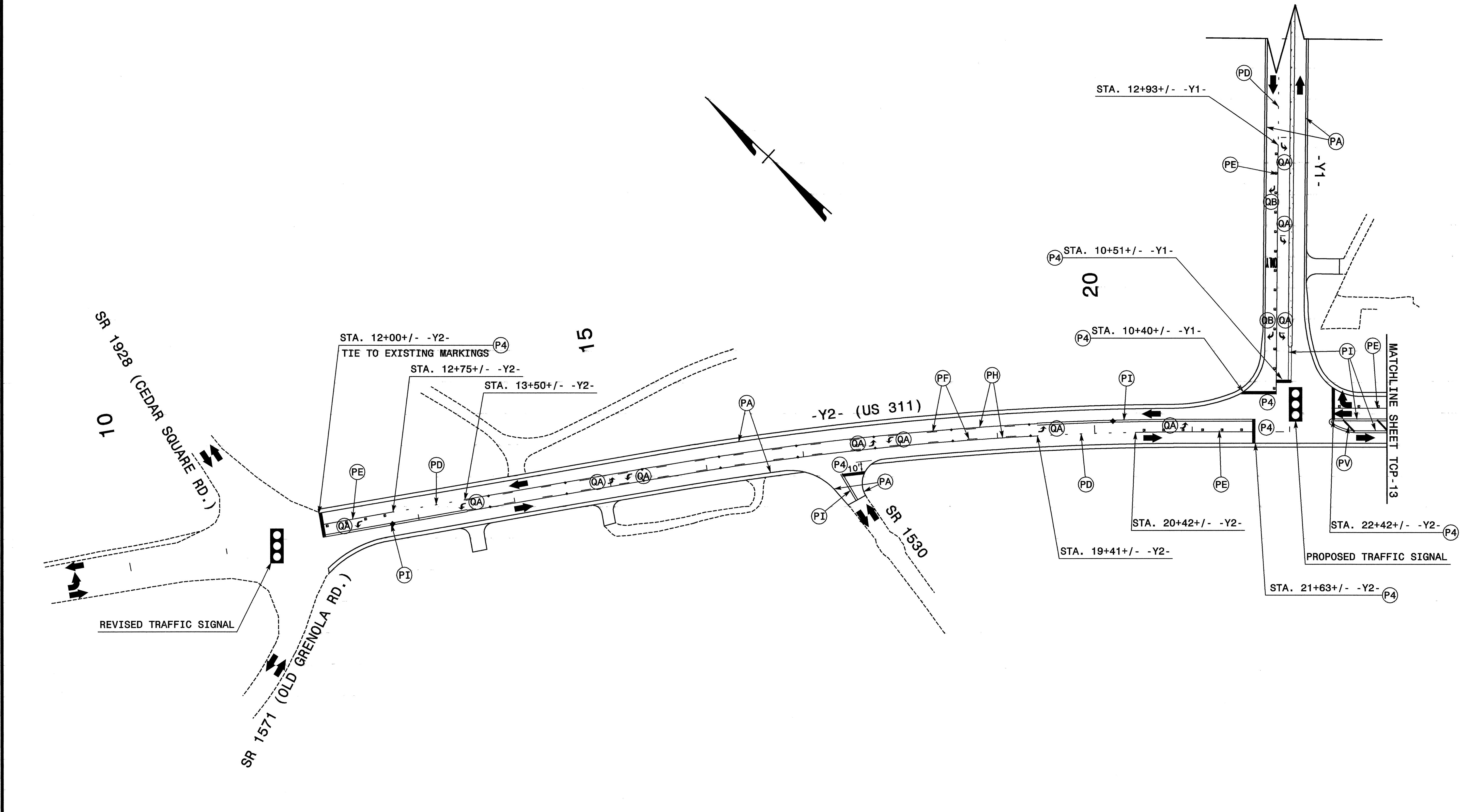
APPROVED: *[Signature]* DATE: 3/1/06
SEAL:

PHASE II DETAILS

SCALE: NONE
DATE: 4/06
DWG. BY: LDA
DESIGN BY: TMA
REVIEWED BY: TMA



REVISIONS	



LEGEND	
	NEW CONSTRUCTION
	ONGOING CONSTRUCTION
	REMOVAL OF EXISTING PAVEMENT

PLAN PREPARED IN THE OFFICE OF:

 TRANSPORTATION GROUP, INC.
 800 W. HILL STREET, SUITE 202
 CHARLOTTE, NC 28208
 PH: (980) 321-0202 FAX: (980) 321-0108

APPROVED: DATE: 5/19/06

SEAL

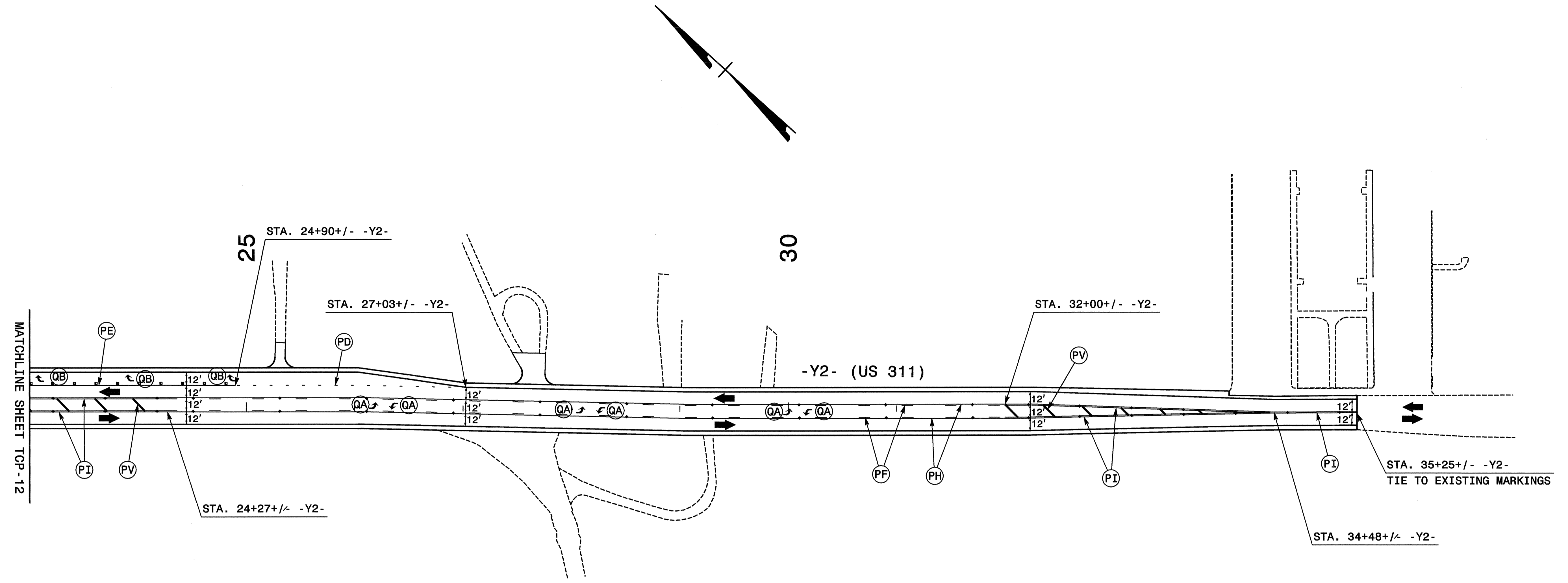
 ENGINEER
 TMA

PHASE II DETAILS

SCALE: NONE
 DATE: 4/06
 DWG. BY: LDA
 DESIGN BY: TMA
 REVIEWED BY: TMA

REVISIONS	

CADD FILE



LEGEND	
	NEW CONSTRUCTION
	ONGOING CONSTRUCTION
	REMOVAL OF EXISTING PAVEMENT

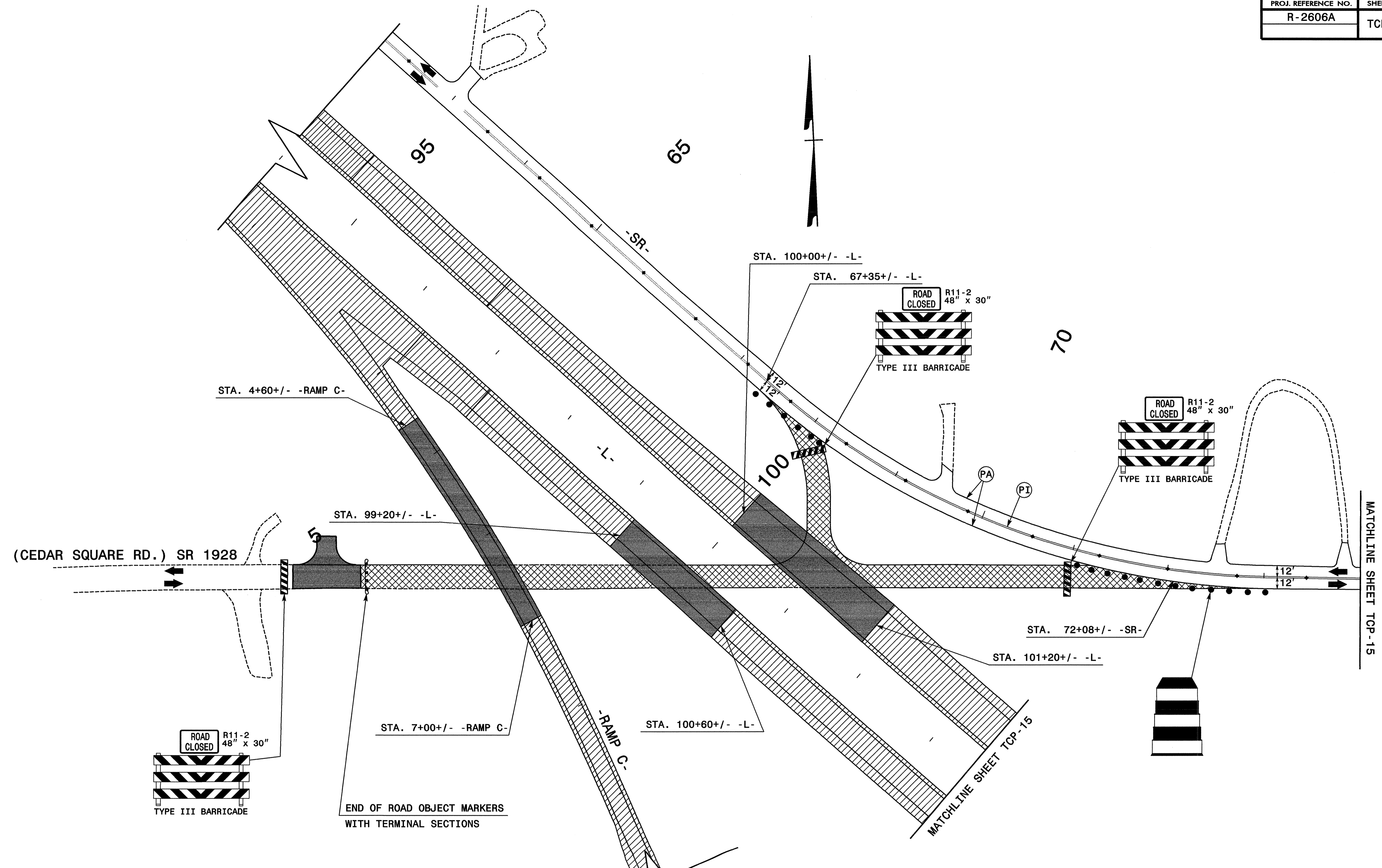
PLAN PREPARED IN THE OFFICE OF:
Kubilins
 TRANSPORTATION GROUP, INC.
 800 W. HILL STREET, SUITE 202
 CHARLOTTE, NC 28208
 PH: (980) 321-0202 FAX: (980) 321-0108

APPROVED: *[Signature]* DATE: 5/1/16

SEAL

PHASE II DETAILS

SCALE: NONE		<table border="1"> <thead> <tr> <th colspan="2">REVISIONS</th> </tr> <tr> <th>NO.</th> <th>DESCRIPTION</th> </tr> <tr> <td> </td> <td> </td> </tr> <tr> <td> </td> <td> </td> </tr> </thead> </table>	REVISIONS		NO.	DESCRIPTION				
REVISIONS										
NO.			DESCRIPTION							
DATE: 4/06										
DWG. BY: LDA										
DESIGN BY: TMA										
REVIEWED BY: TMA	CADD FILE									



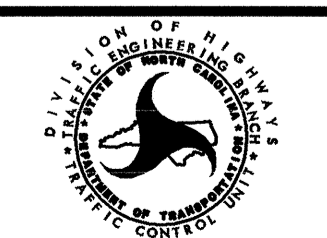
LEGEND	
	NEW CONSTRUCTION
	TEMPORARY PAVEMENT
	ONGOING CONSTRUCTION

PLAN PREPARED IN THE OFFICE OF:
Kubilins
 TRANSPORTATION GROUP, INC.
 800 W. HILL STREET, SUITE 202
 CHARLOTTE, NC 28208
 PH: (980) 321-0202 FAX: (980) 321-0108

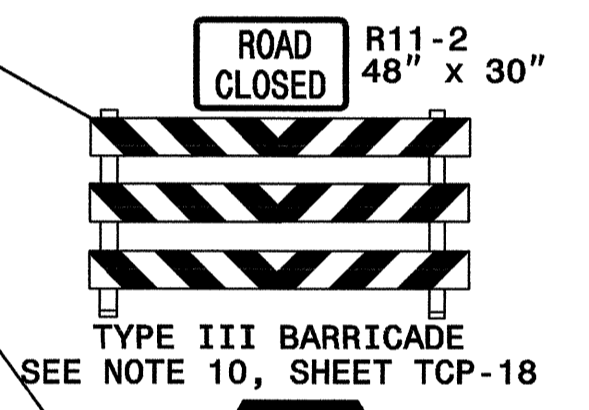
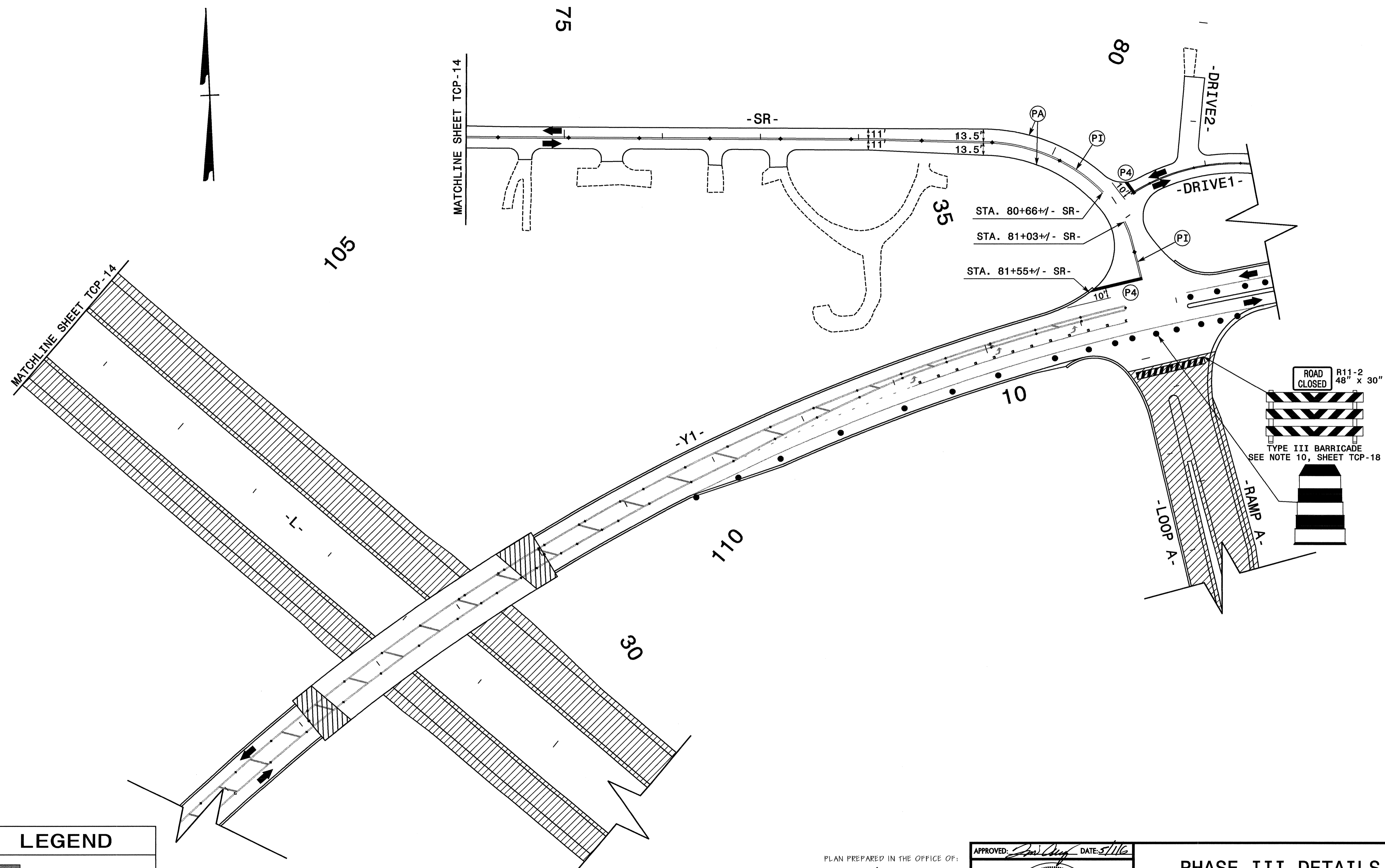
APPROVED: *[Signature]* DATE: 5/1/06

SEAL

PHASE III DETAILS												
SCALE:	NONE	<table border="1"> <thead> <tr> <th colspan="2">REVISIONS</th> </tr> <tr> <th>NO.</th> <th>DESCRIPTION</th> </tr> <tr> <td> </td> <td> </td> </tr> <tr> <td> </td> <td> </td> </tr> <tr> <td> </td> <td> </td> </tr> </thead></table>	REVISIONS		NO.	DESCRIPTION						
REVISIONS												
NO.	DESCRIPTION											
DATE:	4/06											
DWG. BY:	LDA											
DESIGN BY:	TMA											
REVIEWED BY:	TMA											



MATCHLINE SHEET TCP-15



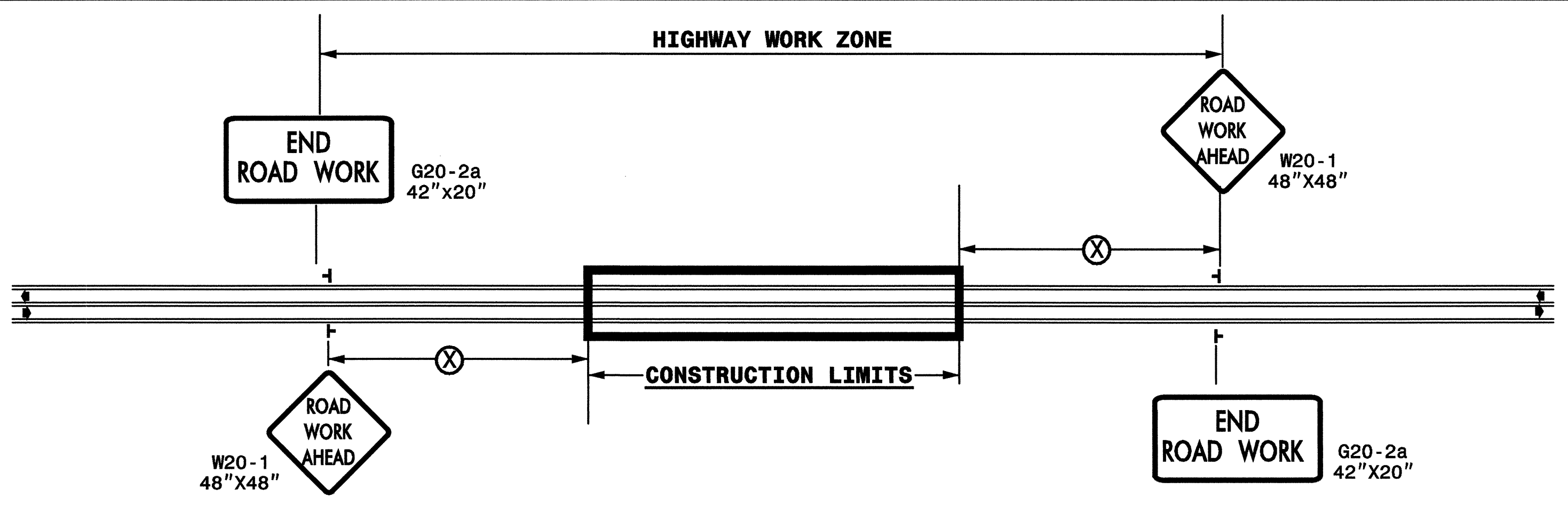
LEGEND	
	NEW CONSTRUCTION
	TEMPORARY PAVEMENT
	ONGOING CONSTRUCTION

PLAN PREPARED IN THE OFFICE OF:
Kubilins
 TRANSPORTATION GROUP, INC.
 800 W. HILL STREET, SUITE 202
 CHARLOTTE, NC 28208
 PH: (980) 321-0202 FAX: (980) 321-0108

APPROVED: *[Signature]* DATE: 5/1/16

PHASE III DETAILS										
SCALE: NONE		<table border="1"> <thead> <tr> <th colspan="2">REVISIONS</th> </tr> <tr> <th>NO.</th> <th>DESCRIPTION</th> </tr> <tr> <td> </td> <td> </td> </tr> <tr> <td> </td> <td> </td> </tr> </thead> </table>	REVISIONS		NO.	DESCRIPTION				
REVISIONS										
NO.			DESCRIPTION							
DATE: 4/06										
DWG. BY: LDA										
DESIGN BY: TMA										
REVIEWED BY: TMA	<table border="1"> <tr> <td>CARD</td> <td>FILE</td> </tr> <tr> <td> </td> <td> </td> </tr> </table>	CARD	FILE							
CARD	FILE									

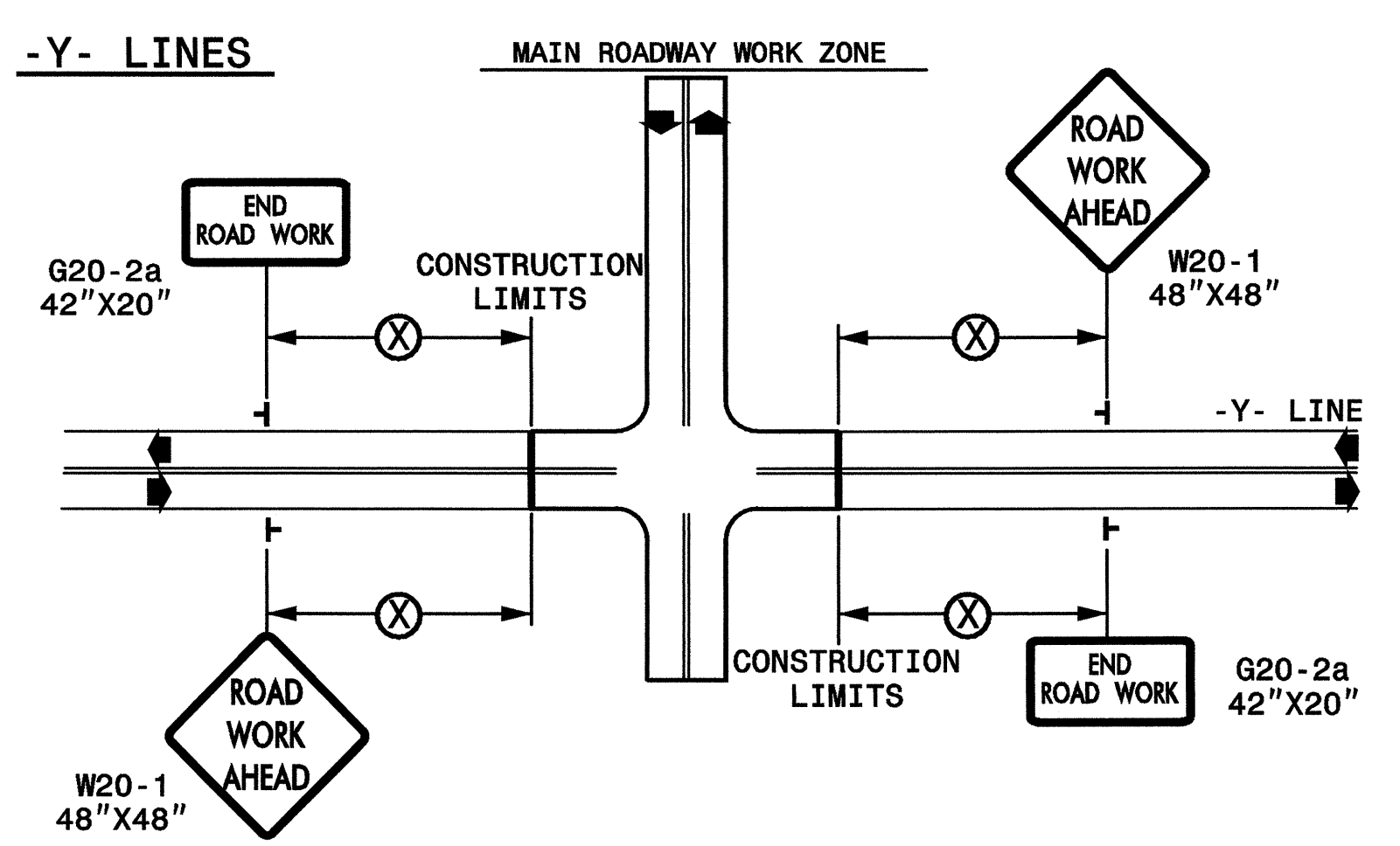
TWO-WAY UNDIVIDED & URBAN FREEWAYS (L-LINES)



POSTED SPEED LIMIT (M.P.H.)	RECOMMENDED MINIMUM SIGN SPACING
≤ 50	500'
≥ 55	1000'

STATE OF NORTH CAROLINA
DEPT. OF TRANSPORTATION
DIVISION OF HIGHWAYS
RALEIGH, N.C.

ROADWAYS INTERSECTING ALONG 2 WAY UNDIVIDED WORK ZONE (Y-LINES)



DETAIL DRAWING FOR
TWO-WAY UNDIVIDED
WORK ZONE WARNING SIGNS

GENERAL NOTES

- USE FLUORESCENT ORANGE SHEETING (TYPE VII OR IX) ON ALL ADVANCED WORK ZONE SIGNS.
- DO NOT INSTALL ADVANCE WARNING SIGNS MORE THAN 3 DAYS PRIOR TO BEGINNING OF WORK.
- SIGNS SHOWN ARE REQUIRED FOR WORK ZONES THAT WILL REMAIN IN EFFECT OVERNIGHT. FOR SHORT-TERM DAILY MAINTENANCE TYPE OPERATIONS, THIS SIGNING APPLICATION IS OPTIONAL; MAY USE ONLY APPLICABLE ROADWAY STANDARD DRAWINGS INSTEAD. HOWEVER, IF THIS SIGNING APPLICATION IS USED, SIGNS MAY BE PORTABLE MOUNTED.
- ALL SIGN SPACING DIMENSIONS ARE APPROXIMATE, FIELD ADJUST AS NECESSARY OR AS DIRECTED.
- USE 3LB STEEL U-CHANNEL POST OR 4" X 4" WOOD POST FOR ALL WORK ZONE SIGNS. 3LB STEEL U-CHANNEL POSTS MUST MEET THE REQUIREMENTS OF STANDARD SPECIFICATION SECTION 1094-1(B). MAY BE GALVANIZED STEEL, OR MAY BE PAINTED GREEN BY THE POST MANUFACTURER. SQUARE STEEL TUBING POSTS HAVING EQUIVALENT STRENGTH OF THE 3 LB STEEL U-CHANNEL POST ARE ALSO ACCEPTABLE FOR USE. ERECT SIGNS PER ROADWAY STANDARD DRAWING 1110.01. PAYMENT FOR WOOD POSTS, 3LB STEEL U-CHANNEL AND SQUARE STEEL TUBING POSTS WITH SIGNS WILL BE MADE ACCORDING TO STANDARD SPECIFICATION "WORK ZONE SIGNS" SECTION 1110.
- WHEN NECESSARY, USE SPLICING IN ACCORDANCE WITH ROADWAY STANDARD DRAWING NO. 1110.01. REMOVE ENTIRE POST WHEN REMOVING SIGNS WITH SPLICED POSTS.
- DO NOT BACK BRACE SIGN SUPPORTS.

LEGEND

⊥ STATIONARY SIGN
← DIRECTION OF TRAFFIC FLOW

SHEET 1 OF 1

PLAN PREPARED IN THE OFFICE OF:
Kubilins
TRANSPORTATION GROUP, INC.
800 W. HILL STREET, SUITE 202
CHARLOTTE, NC 28208
PH: (980) 321-0202 FAX: (980) 321-0108

APPROVED: *Tim Arcy* DATE: 5/1/16

SEAL
NORTH CAROLINA PROFESSIONAL ENGINEER
TIM ARCY
025465

DETAIL DRAWING FOR TWO-WAY UNDIVIDED AND URBAN FREEWAYS ADVANCED WORK ZONE WARNING SIGNS

SCALE: NONE		REVISIONS	
DATE: 4/06		7-98	10/01
DWG. BY:		10-98	
DESIGN BY:		01/01	
REVIEWED BY:			