



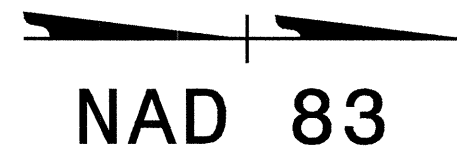
PAVEMENT MARKING SCHEDULE

SYMBOL	DESCRIPTION	FINAL PAVEMENT MARKINGS POLYUREA (4", 20MLS)	PAY ITEM QUANTITY BREAKDOWN		TOTAL QUANTITY	
			QUANTITY	UNIT	QUANTITY	UNIT
VA	WHITE EDGELINE		55212	LF		
VB	YELLOW EDGELINE		8340	LF		
VC	10 FT. WHITE SKIP		10708	LF		
VD	2 FT. WHITE MINISKIP		759	LF		
VE	WHITE SOLID LANE LINE		3768	LF		
VF	10 FT. YELLOW SKIP		785	LF		
VH	YELLOW SINGLE CENTER		3140	LF		
VI	YELLOW DOUBLE CENTER		13052	LF		
					TOTAL	95764 LF
VT	YELLOW DIAGONAL	POLYUREA (8", 20MLS)	74	LF		
					TOTAL	74 LF
V2	WHITE STOPBAR	POLYUREA (24" 20MILS)	418	LF		
					TOTAL	418 LF
WI	ALPHANUMERIC	POLYUREA PAVEMENT MARKING CHARACTER	16	EA		
					TOTAL	16 EA
WA	LEFT TURN ARROW	POLYUREA PAVEMENT MARKING SYMBOL	43	EA		
WB	RIGHT TURN ARROW		17	EA		
WC	STRAIGHT ARROW		14	EA		
WE	COMBO STRAIGHT/RIGHT		2	EA		
					TOTAL	76 EA
		MARKERS				
		PERMANENT RAISED PAVEMENT MARKERS				
MA	YELLOW & YELLOW		2	EA		
MB	CRYSTAL & RED		25	EA		
					TOTAL	27 EA
		SNOWPLOWABLE RAISED PAVEMENT MARKERS				
ME	YELLOW & YELLOW		164	EA		
MF	CRYSTAL & RED		724	EA		
					TOTAL	888 EA
		TEMPORARY PAVEMENT MARKINGS COLD APPLIED PLASTIC (TYPE 4) (4")				
CA	WHITE EDGELINE		326	LF		
CI	YELLOW DOUBLE CENTER		326	LF		
					TOTAL	652 LF
		PAINT (4")				
PA	WHITE EDGELINE		128266	LF		
PC	10 FT. WHITE SKIP		1688	LF		
PD	2 FT. WHITE MINISKIP		848	LF		
PE	WHITE SOLID LANE LINE		4790	LF		
PF	10 FT. YELLOW SKIP		1570	LF		
PH	YELLOW SINGLE CENTER		6280	LF		
PI	YELLOW DOUBLE CENTER		53880	LF		
					TOTAL	197322 LF
PV	YELLOW DIAGONAL	PAINT (8")	340	LF		
					TOTAL	340 LF
P4	WHITE STOPBAR	PAINT (24")	1740	LF		
					TOTAL	1740 LF
QI	ALPHANUMERIC CHAR.	PAINT MARKING CHARACTERS	16	EA		
					TOTAL	16 EA
		PAINT MARKING SYMBOLS				
QA	LEFT TURN ARROW		56	EA		
QB	RIGHT TURN ARROW		30	EA		
QC	STRAIGHT ARROW		32	EA		
QE	COMBO STRAIGHT/RIGHT		4	EA		
					TOTAL	122 EA
		MARKERS				
		TEMPORARY RAISED PAVEMENT MARKERS				
MH	YELLOW & YELLOW		337	EA		
MI	CRYSTAL & RED		286	EA		
					TOTAL	623 EA

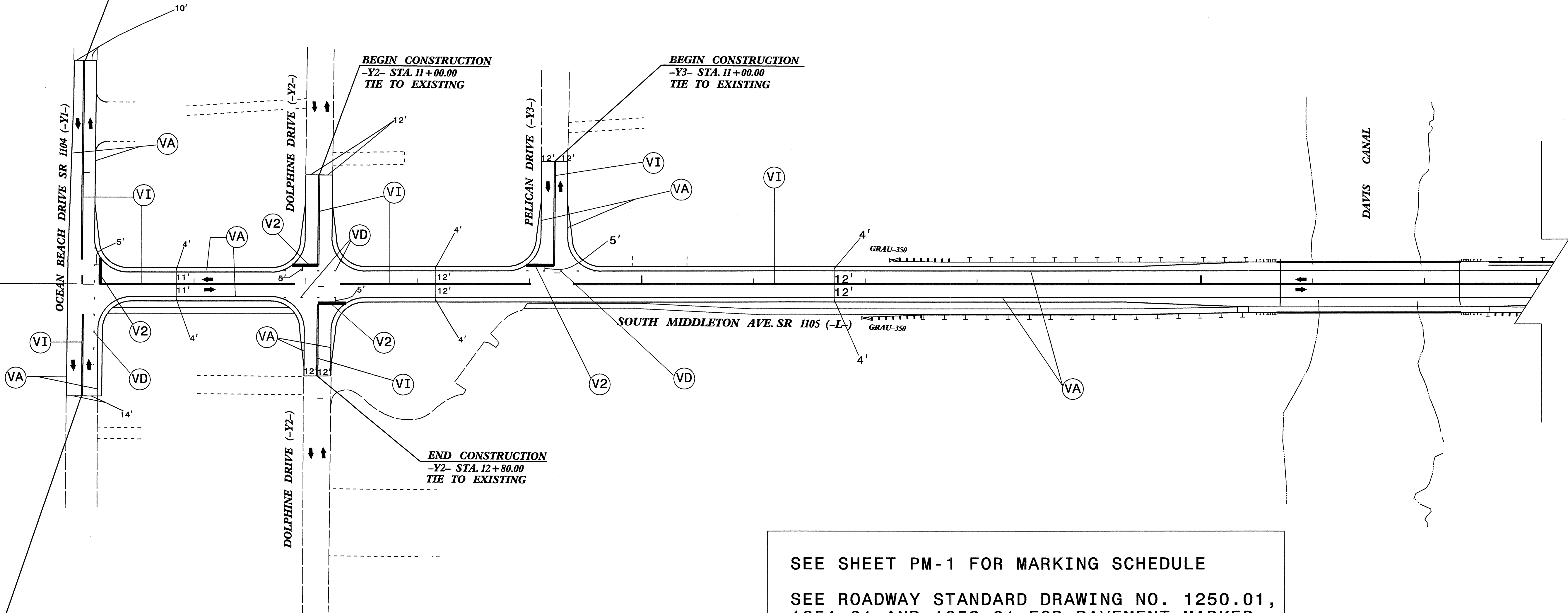
23-MAY-2006 08:51
 05-CCT18033
 MWGB103JD AT WZTC224188
 2458\TrafficControl\Top\PM\2245.TC.dml.dgn

APPROVED:  DATE: 05/06	PAVEMENT MARKING SCHEDULE	
	SCALE: NONE	REVISIONS
	DATE: 05/06	
	DWG. BY: MW	
	DESIGN BY: MW	
REVIEWED BY: JWG		
		CAUD FILE

BEGIN TIP PROJECT R-2245
-L- POT Sta. 10+00.00 =
-Y1- POT Sta. 11+99.95



BEGIN CONSTRUCTION
-Y1- STA. 10+00.00
TIE TO EXISTING



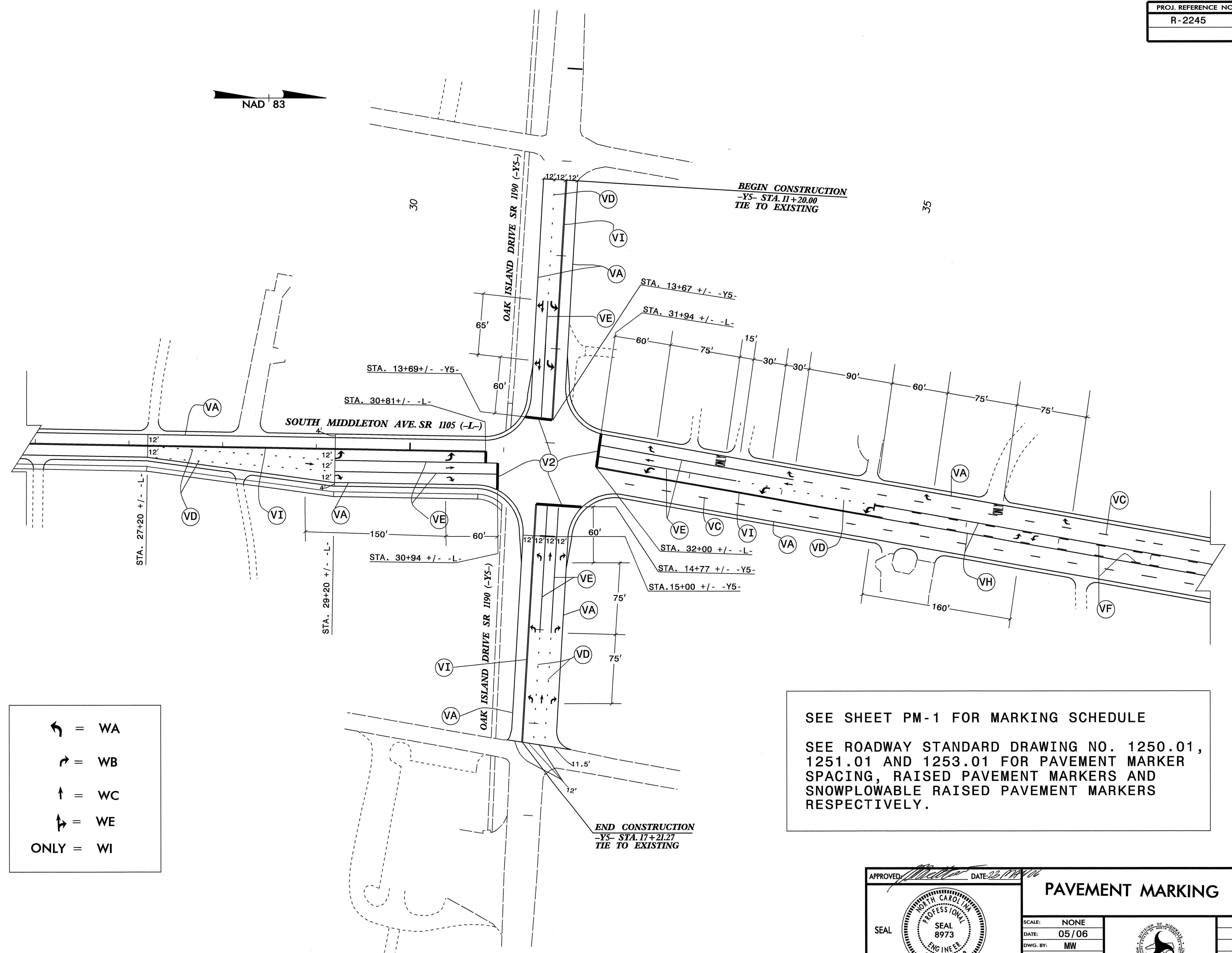
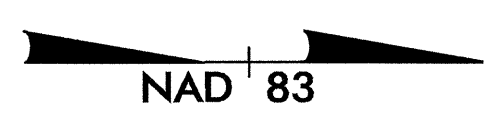
END CONSTRUCTION
-Y1- STA. 13+00.00
TIE TO EXISTING

END CONSTRUCTION
-Y2- STA. 12+80.00
TIE TO EXISTING

SEE SHEET PM-1 FOR MARKING SCHEDULE
 SEE ROADWAY STANDARD DRAWING NO. 1250.01,
 1251.01 AND 1253.01 FOR PAVEMENT MARKER
 SPACING, RAISED PAVEMENT MARKERS AND
 SNOWPLOWABLE RAISED PAVEMENT MARKERS
 RESPECTIVELY.

23-MAY-2006 08:50
 \\lets-ccfs03\2245\TrafficControl\top\pmp\2245.Tc_pm2.dgn
 AT WZTC22468
 mwashaya

APPROVED:	DATE: 05/06	PAVEMENT MARKING PLAN	
SCALE: NONE	REVISIONS		
DATE: 05/06			
DWG. BY: MW			
DESIGN BY: MW			
REVIEWED BY: JWG			



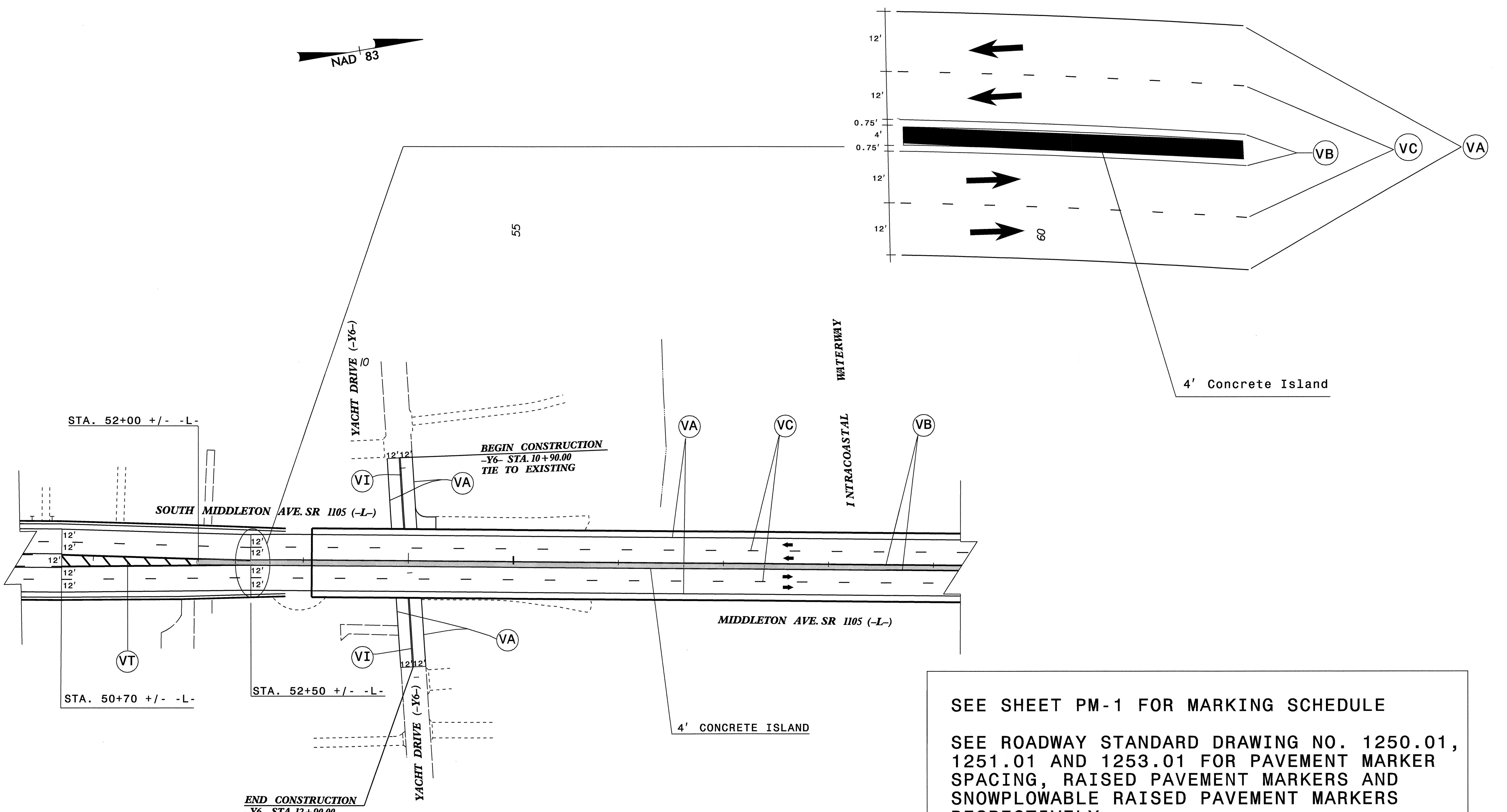
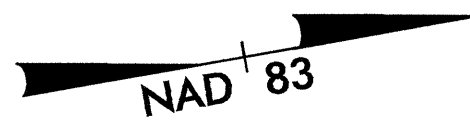
	=	WA
	=	WB
	=	WC
	=	WE
ONLY	=	WI

SEE SHEET PM-1 FOR MARKING SCHEDULE

SEE ROADWAY STANDARD DRAWING NO. 1250.01, 1251.01 AND 1253.01 FOR PAVEMENT MARKER SPACING, RAISED PAVEMENT MARKERS AND SNOWPLOWABLE RAISED PAVEMENT MARKERS RESPECTIVELY.

23-MAY-2006 08:50
 C:\GIS\cct1803\AT\WZTC224168
 mwg\gcyg AT WZTC224168

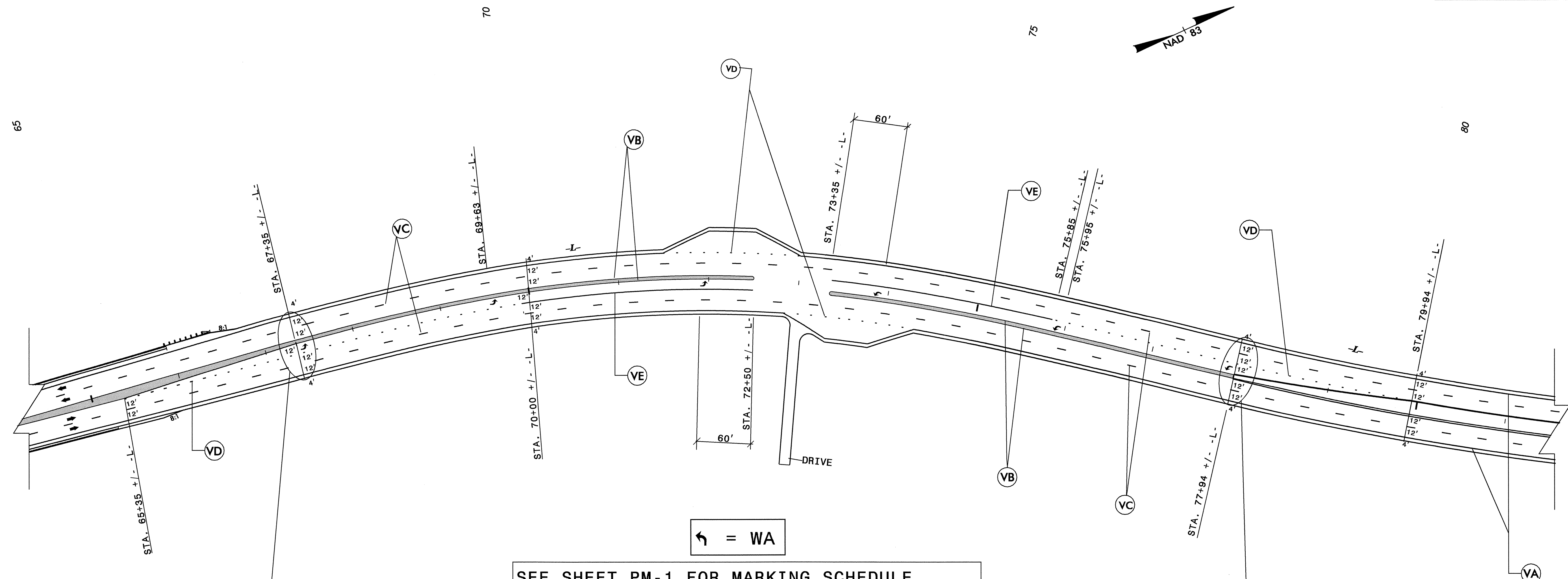
APPROVED:	DATE: 05/11/06	PAVEMENT MARKING PLAN	
		DATE: 05/06	REVISIONS
DWG. BY: MW			
DESIGN BY: MW			
REVIEWED BY: JWG			



SEE SHEET PM-1 FOR MARKING SCHEDULE
 SEE ROADWAY STANDARD DRAWING NO. 1250.01,
 1251.01 AND 1253.01 FOR PAVEMENT MARKER
 SPACING, RAISED PAVEMENT MARKERS AND
 SNOWPLOWABLE RAISED PAVEMENT MARKERS
 RESPECTIVELY.

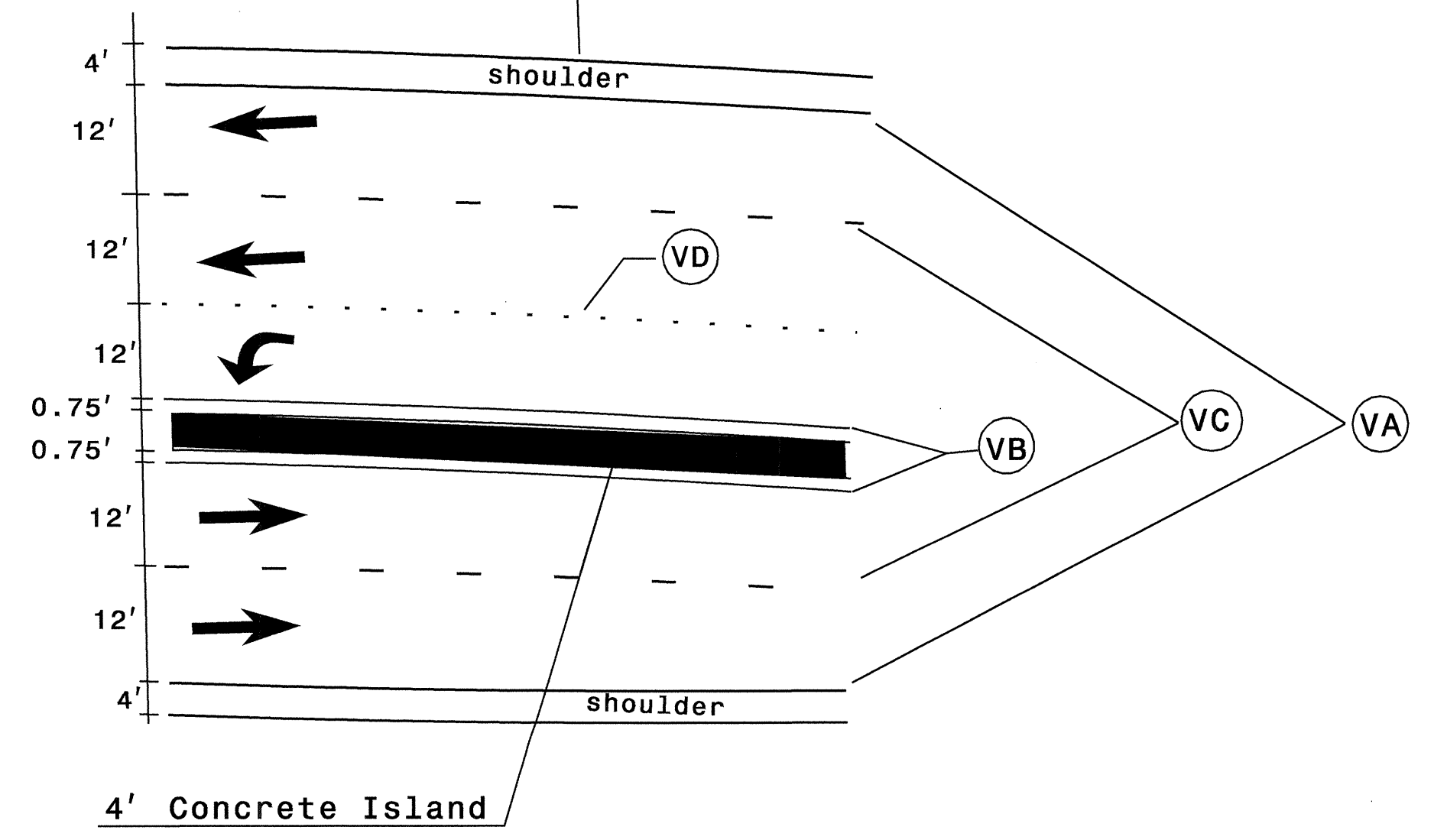
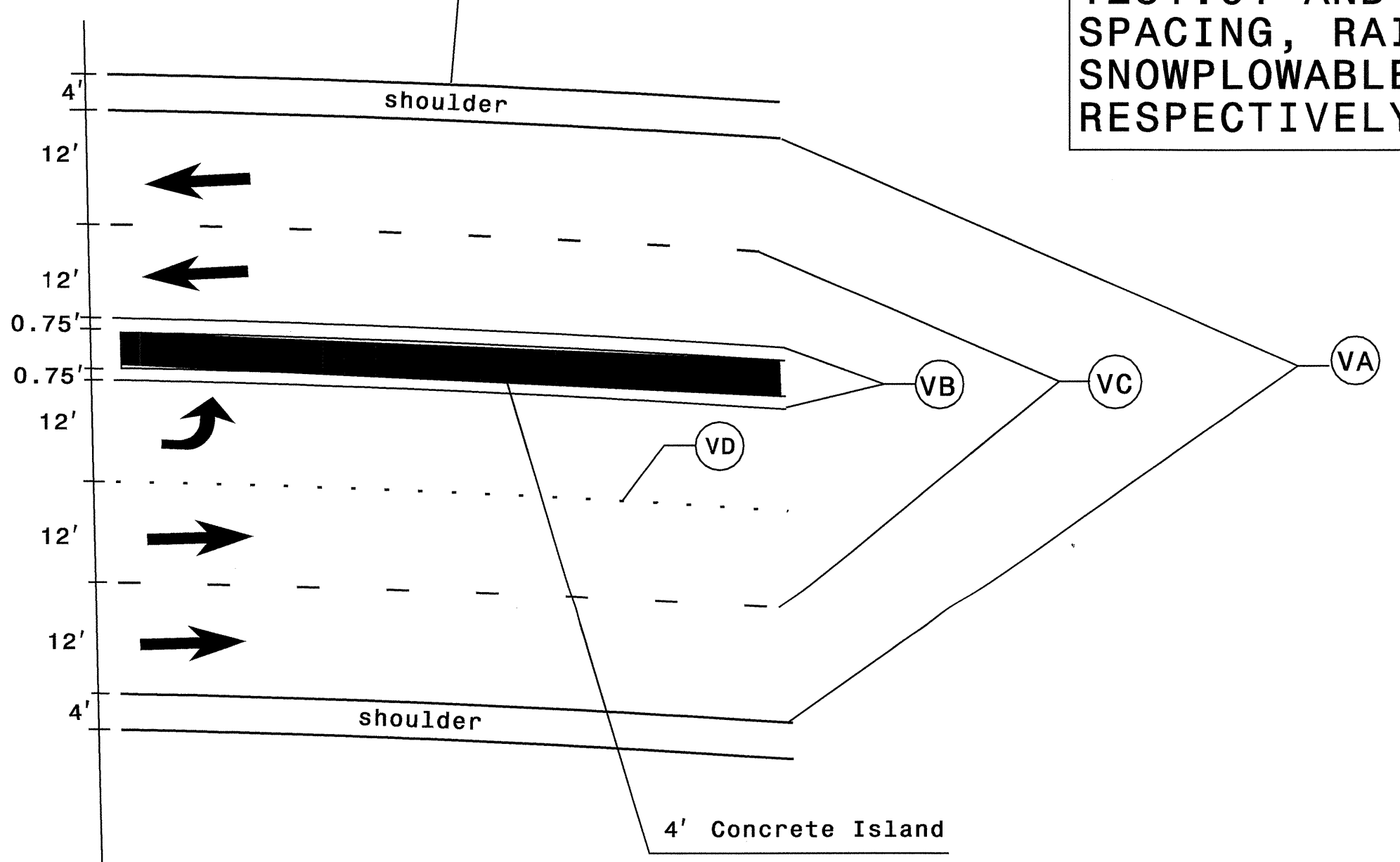
23-MAY-2006 08:49
 \\efs-ccfs03\22458\Traffic\TrafficControl\top\PM\2245_TC.pml4.dgn
 mwashoyg AT WZTC224168

APPROVED:	DATE: 05/06	PAVEMENT MARKING PLAN	
SCALE: NONE	DATE: 05/06		REVISIONS
DWG. BY: MW	DESIGN BY: MW		
REVIEWED BY: JWG			



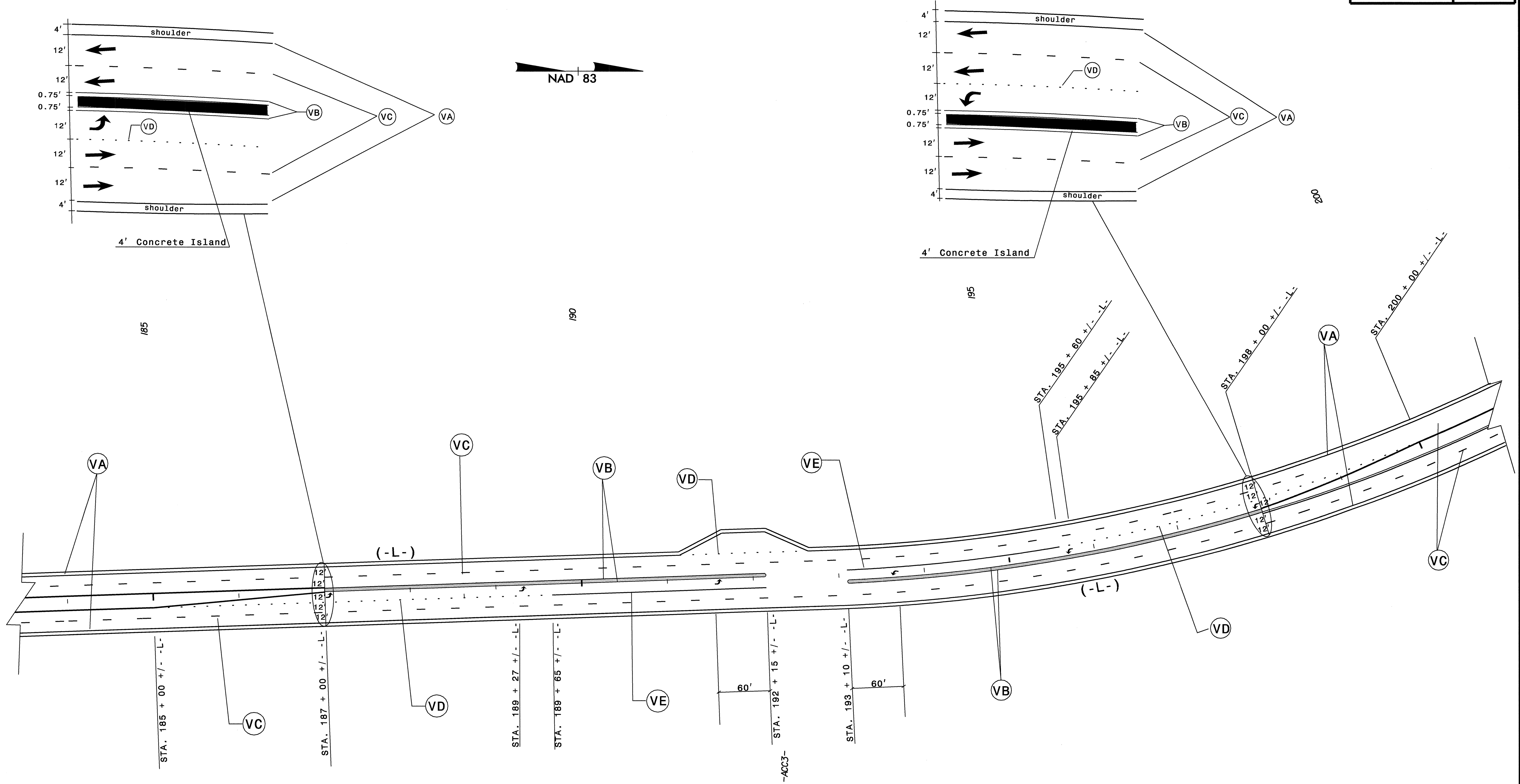
↩ = WA

SEE SHEET PM-1 FOR MARKING SCHEDULE
 SEE ROADWAY STANDARD DRAWING NO. 1250.01,
 1251.01 AND 1253.01 FOR PAVEMENT MARKER
 SPACING, RAISED PAVEMENT MARKERS AND
 SNOWPLOWABLE RAISED PAVEMENT MARKERS
 RESPECTIVELY.



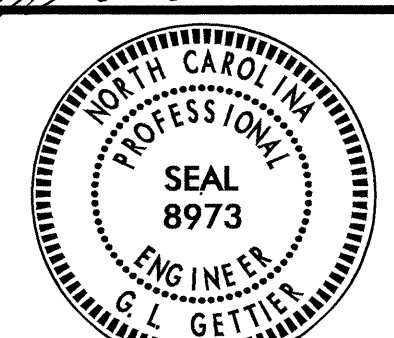
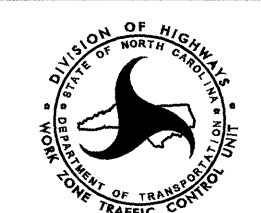
05-JAN-2007 16:15
 \\dot\dfsro\proj\h\proj\traffic\trafficcontrol\top\pmp\2245-TC-pm5.dgn
 mwshayc AT 12/22/06

APPROVED:	DATE: 1/12/07	PAVEMENT MARKING PLAN							
SCALE: NONE DATE: 01/07 DWG. BY: MW DESIGN BY: MW REVIEWED BY: JWG		<table border="1"> <tr> <th colspan="2">REVISIONS</th> </tr> <tr> <td> </td> <td> </td> </tr> <tr> <td> </td> <td> </td> </tr> </table>		REVISIONS					
REVISIONS									
		CAD FILE							

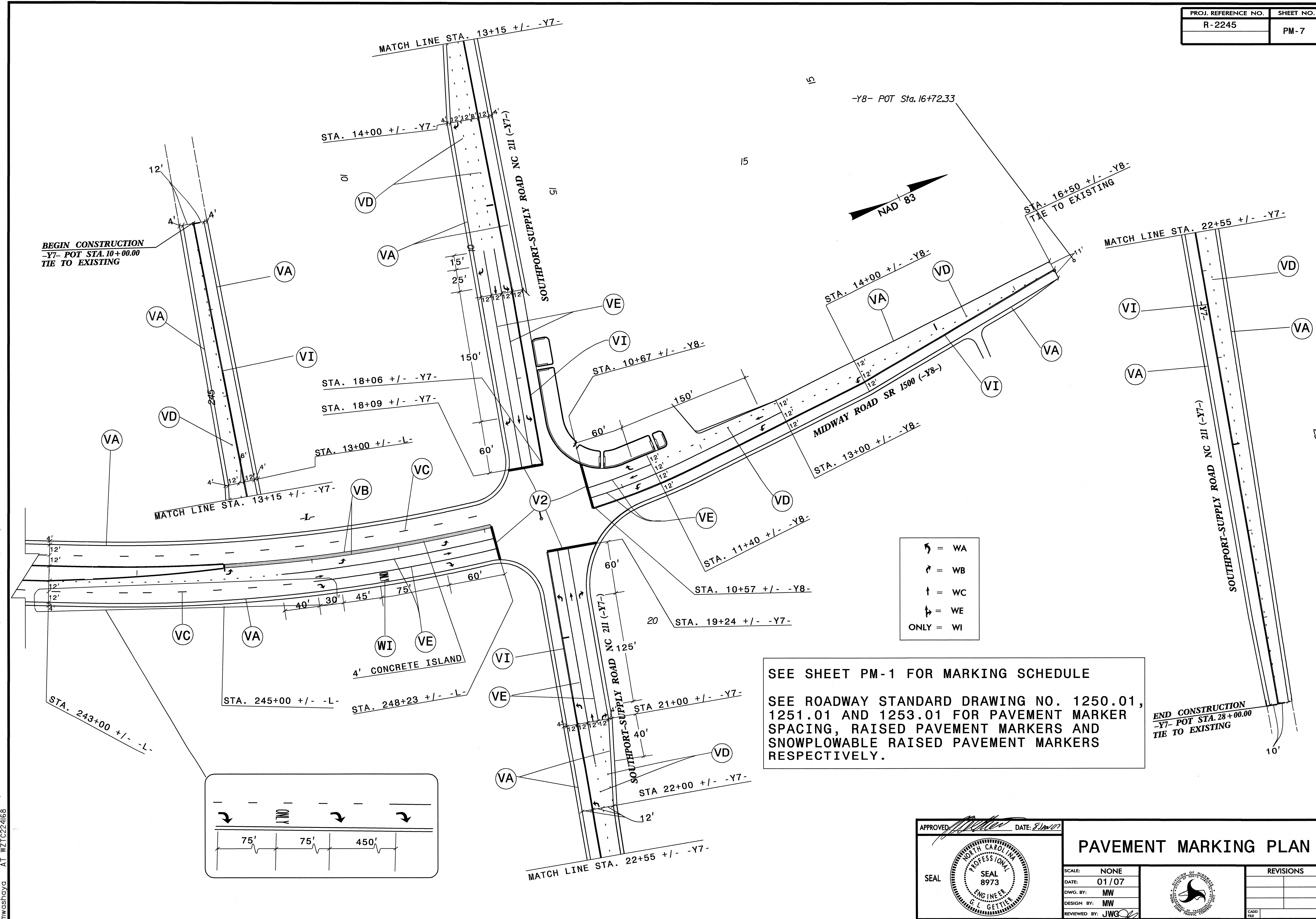


↩ = WA

SEE SHEET PM-1 FOR MARKING SCHEDULE
 SEE ROADWAY STANDARD DRAWING NO. 1250.01,
 1251.01 AND 1253.01 FOR PAVEMENT MARKER
 SPACING, RAISED PAVEMENT MARKERS AND
 SNOWPLOWABLE RAISED PAVEMENT MARKERS
 RESPECTIVELY.

APPROVED: <i>[Signature]</i> DATE: 5 Jan 07	PAVEMENT MARKING PLAN							
								
SCALE: NONE	REVISIONS							
DATE: 01/07	<table border="1"> <tr><td> </td><td> </td></tr> <tr><td> </td><td> </td></tr> <tr><td> </td><td> </td></tr> </table>							
DWG. BY: MW	CADD FILE							
DESIGN BY: MW								
REVIEWED BY: JWG								

05-JAN-2007 16:16
 \\dot\dfsroot\ncdot\projects\2245\trafficcontrol\top\pmp\2245_TC.pml6.dgn
 mwg@ndyd AT MZTC2245

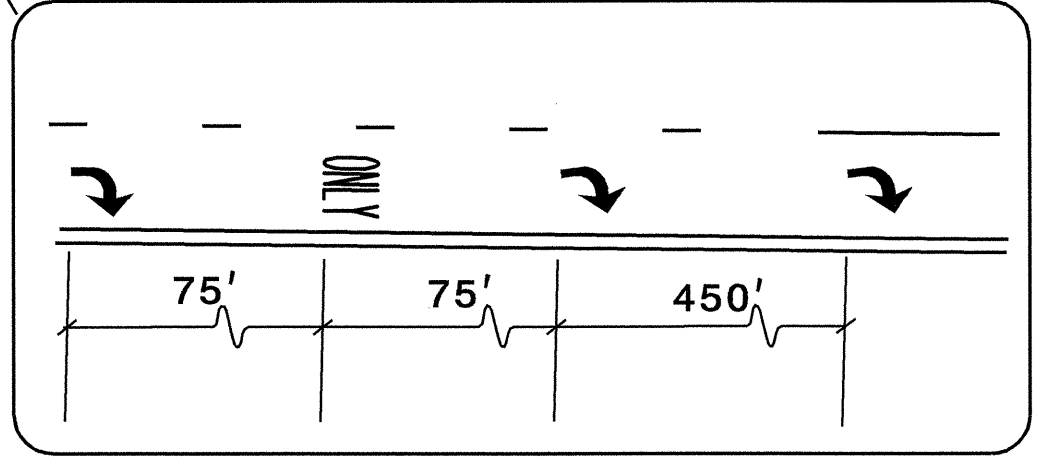


BEGIN CONSTRUCTION
-Y7- POT STA. 10+00.00
TIE TO EXISTING

END CONSTRUCTION
-Y7- POT STA. 28+00.00
TIE TO EXISTING

SEE SHEET PM-1 FOR MARKING SCHEDULE

SEE ROADWAY STANDARD DRAWING NO. 1250.01, 1251.01 AND 1253.01 FOR PAVEMENT MARKER SPACING, RAISED PAVEMENT MARKERS AND SNOWPLOWABLE RAISED PAVEMENT MARKERS RESPECTIVELY.



- ↗ = WA
- ↘ = WB
- ↑ = WC
- ↓ = WE
- = WI

APPROVED: *[Signature]* DATE: 8/10/07

SEAL

PAVEMENT MARKING PLAN

SCALE: NONE		REVISIONS
DATE: 01/07		
DWG. BY: MW		
DESIGN BY: MW		
REVIEWED BY: JWG		

05-MAN-2007 (6/17)
 \\dot\dfsroot\top\proj\traffic\trafficcontrol\top\MP\2245-TC-pm7.dgn
 MWGshaya AT WZT2245