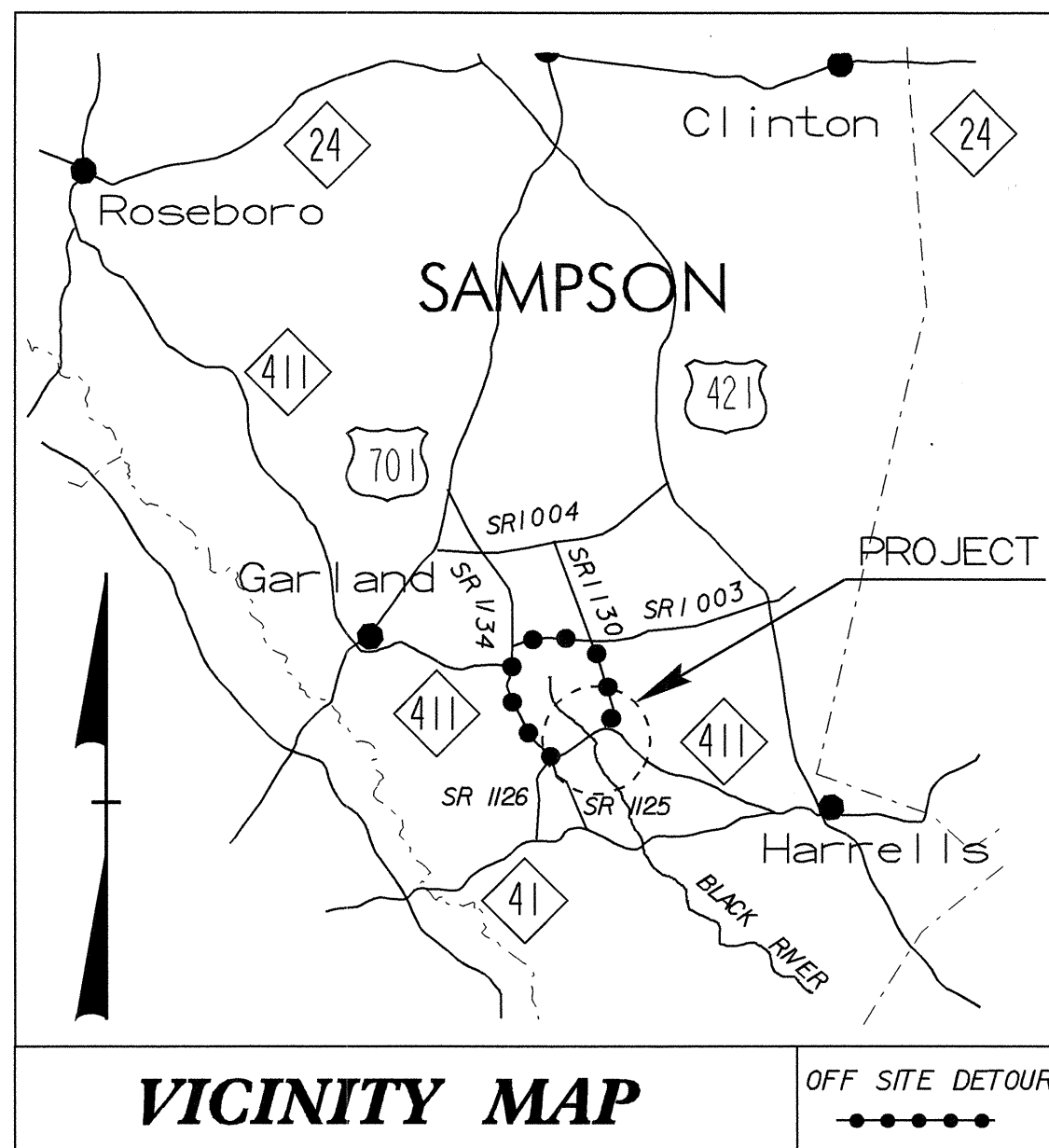


9/09/99

See Sheet 1-A For Index of Sheets



STATE OF NORTH CAROLINA
DIVISION OF HIGHWAYS

**UTILITIES BY OTHERS PLANS
SAMPSON COUNTY**

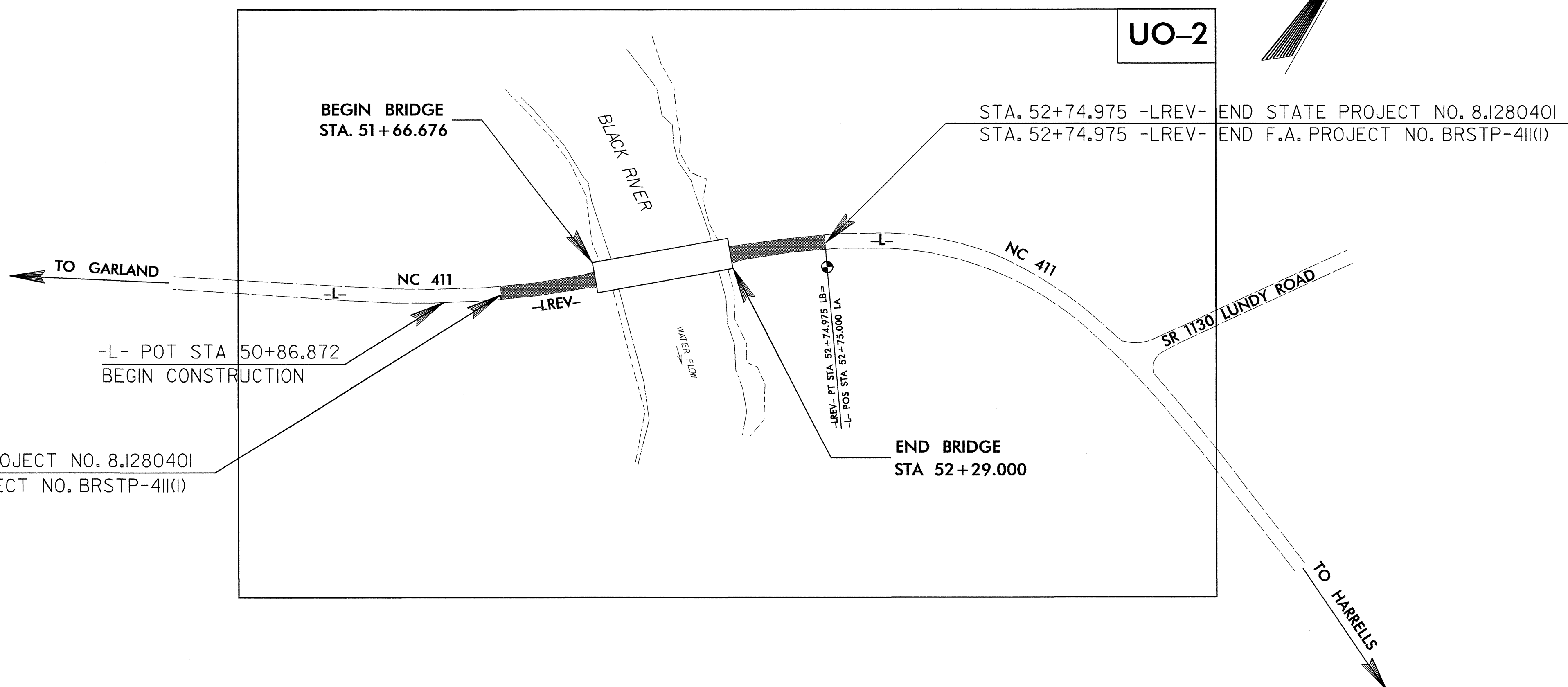
**LOCATION: BRIDGE 14 OVER BLACK RIVER AND APPROACHES
ON NC 411 (AT CLEAR RUN) WEST OF HARRELLS**

TYPE OF WORK: UTILITIES RELOCATION

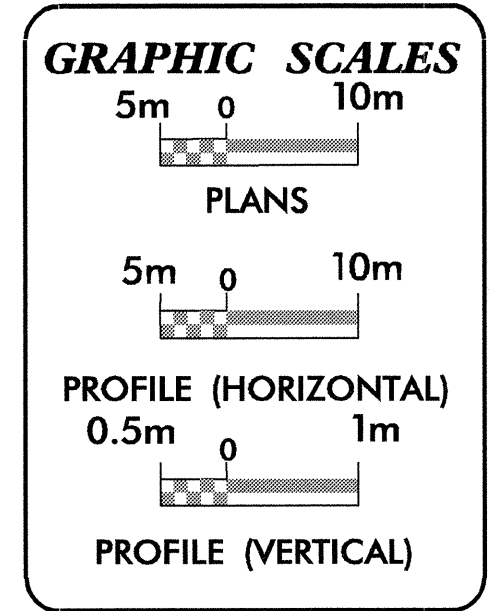
METRIC

ALL DIMENSIONS IN THESE PLANS ARE IN METERS AND/OR MILLIMETERS UNLESS OTHERWISE SHOWN

T.I.P. NO.	SHEET NO.
B-1381	UO-1



PROJECT: WBS 32594.1.1 TIP: B-1381



INDEX OF SHEETS

SHEET NO.	DESCRIPTION
UO-1	TITLE SHEET
UO-2	UTILITIES BY OTHERS PLAN SHEET

UTILITY OWNERS ON PROJECT

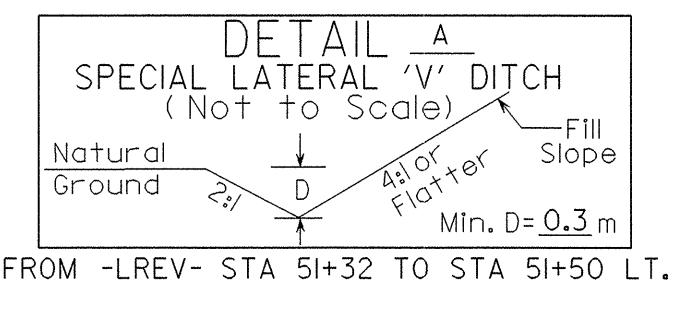
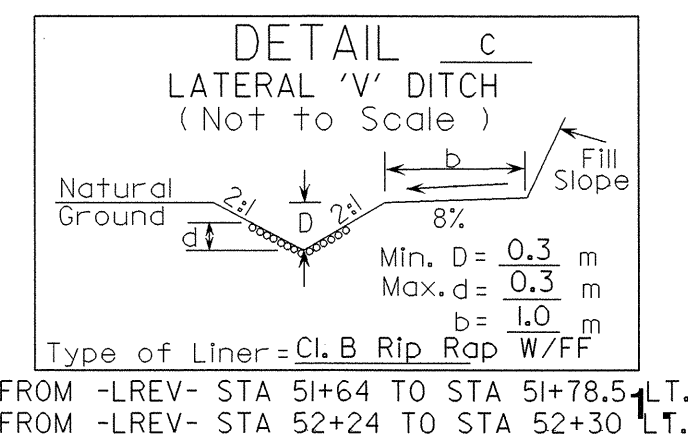
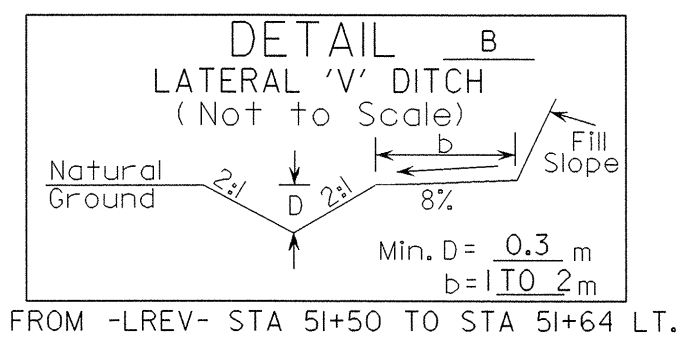
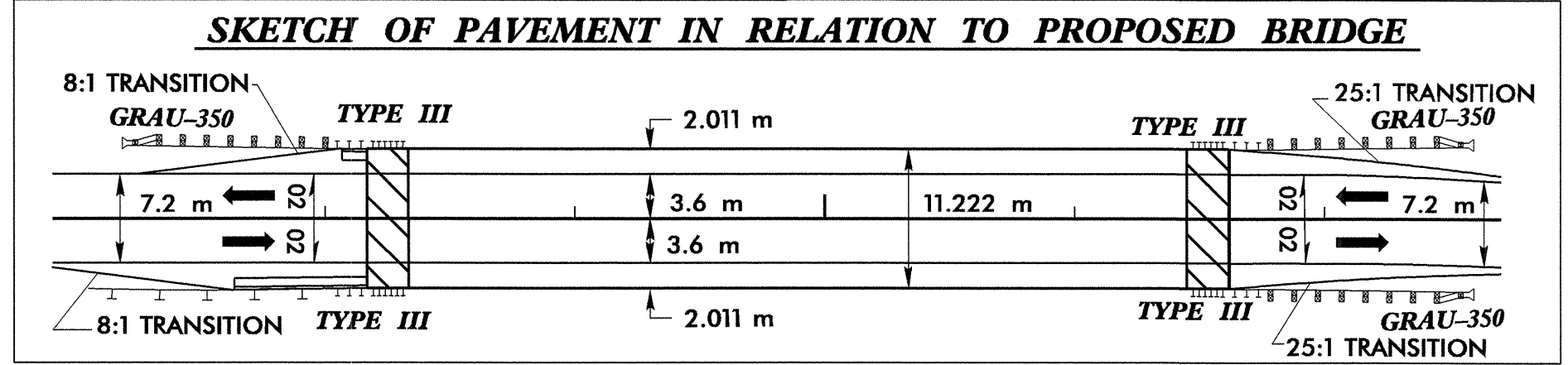
(1) STAR TELEPHONE - TELEPHONE

PREPARED IN THE OFFICE OF:
**DIVISION OF HIGHWAYS
PROJECT SERVICES
UTILITY SECTION**

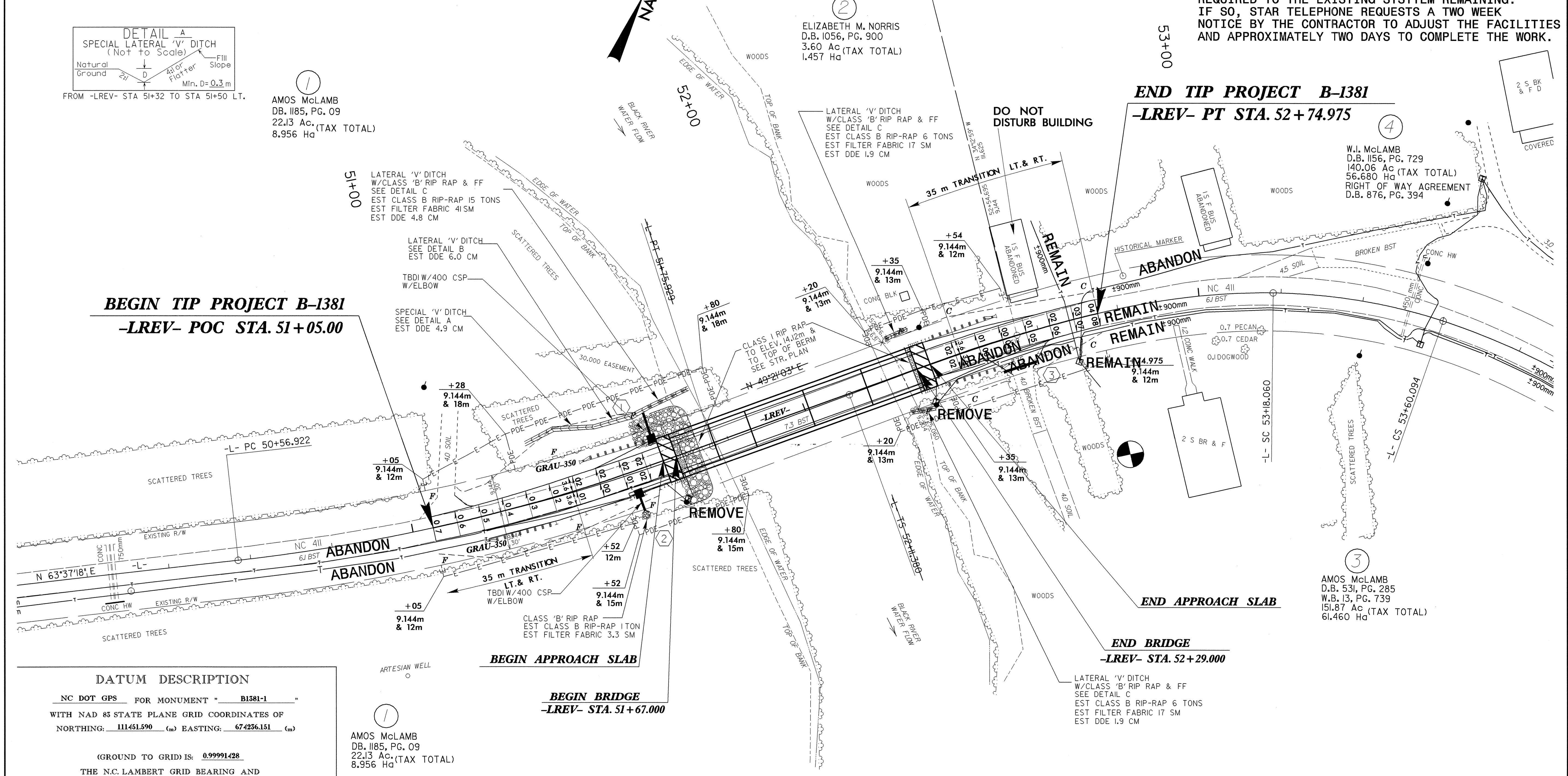
1591 MAIL SERVICES CENTER
RALEIGH NC 27699-1591
PHONE (919) 250-4128
FAX (919) 250-4119

Roger Worthington, P.E. UTILITIES SECTION ENGINEER
Steve McKee, P.E. UTILITIES SQUAD LEADER PROJECT ENGINEER
Donald Proper UTILITIES PROJECT DESIGNER

04-DEC-2006 08:45
r:\utilities\rd\ut\p\04\bi1381.u00_1sh.dgn
dwgname AT PS22283



NOTES TO CONTRACTOR:
 STAR TELEPHONE: ALL WORK AS SHOWN ON THE PLANS SHALL BE COMPLETED BY THE DATE OF AVAILABILITY. SOME MINOR ADJUSTMENTS MAY BE REQUIRED TO THE EXISTING SYSTEM REMAINING. IF SO, STAR TELEPHONE REQUESTS A TWO WEEK NOTICE BY THE CONTRACTOR TO ADJUST THE FACILITIES AND APPROXIMATELY TWO DAYS TO COMPLETE THE WORK.



DATUM DESCRIPTION

NC DOT GPS FOR MONUMENT " B1581-1 "

WITH NAD 83 STATE PLANE GRID COORDINATES OF

NORTHING: 111451.590 (m) EASTING: 674236.151 (m)

(GROUND TO GRID) IS: 0.99991428

THE N.C. LAMBERT GRID BEARING AND LOCALIZED HORIZONTAL GROUND DISTANCE FROM " B1581-1 " TO -LREV- STATION 51+05.000 IS

N 64°12'11.8" E 437.9034m

ALL LINEAR DIMENSIONS ARE LOCALIZED HORIZONTAL DISTANCES

VERTICAL DATUM USED IS NGVD 29

AMOS McLAMB
 D.B. 1185, PG. 09
 22.13 Ac. (TAX TOTAL)
 8.956 Ha

ELIZABETH M. NORRIS
 D.B. 1056, PG. 900
 3.60 Ac. (TAX TOTAL)
 1.457 Ha

W.I. McLAMB
 D.B. 1156, PG. 729
 140.06 Ac. (TAX TOTAL)
 56.680 Ha (TAX TOTAL)
 RIGHT OF WAY AGREEMENT
 D.B. 876, PG. 394

AMOS McLAMB
 D.B. 531, PG. 285
 W.B. 13, PG. 739
 151.87 Ac. (TAX TOTAL)
 61.460 Ha

PI Sta	Rls Sta	PI Sta	Pls Sta
51+16.735	52+83.029	53+39.230	54+01.455
$\Delta = 14' 16" 15.0" (LT)$	$\Delta = 21' 26" 48.4"$	$\Delta = 16' 54" 01.9" (RT)$	$\Delta = 24' 30" 38.0"$
L = 119.007	Ls = 106.680	L = 42.033	Ls = 121.920
T = 59.813	LT = 11.649	T = 21.170	LT = 82.073
R = 477.800	ST = 36.042	R = 142.500	ST = 41.362

FOR -L- PROFILE
 SEE SHEET 5

FOR STRUCTURE PLANS
 SEE SHEETS S-1 THRU S-

04-DEC-2006 09:29 AM (P:\Projects\B-1381\wpcap\sh04.dgn) G:\p04\at\11451590.dwg