

**TIP PROJECT: B-1381**

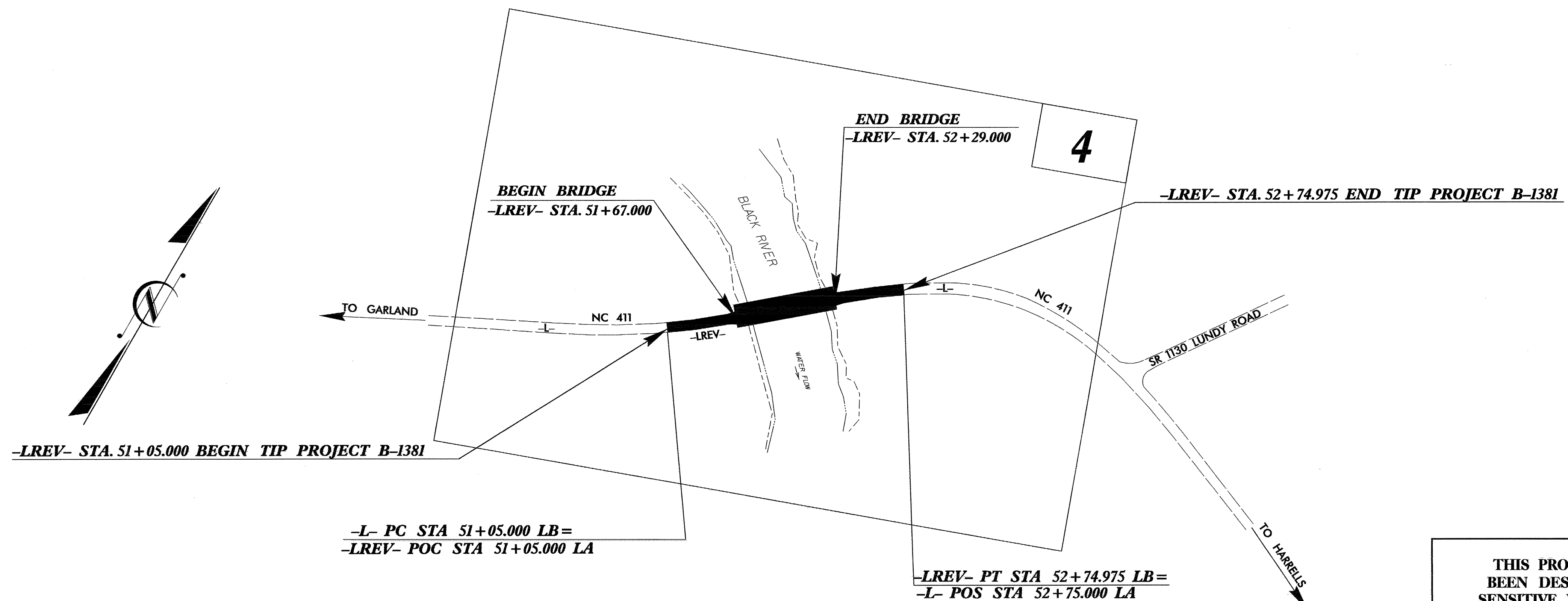
STATE OF NORTH CAROLINA  
DIVISION OF HIGHWAYS

PLAN FOR PROPOSED  
HIGHWAY EROSION CONTROL

**SAMPSON COUNTY**

**LOCATION: BRIDGE NO. 14 OVER BLACK RIVER AND APPROACHES  
ON NC 411 AT CLEAR RUN WEST OF HARRELS**

**TYPE OF WORK: GRADING, PAVING, DRAINAGE, AND STRUCTURE**



ALL DIMENSIONS IN THESE  
PLANS ARE IN METERS  
UNLESS OTHERWISE SHOWN

STATE	STATE PROJECT REFERENCE NO.	SHEET NO.	TOTAL SHEETS
N.C.	B-1381	EC-1	
STATE PROJ. NO.	F.A. PROJ. NO.	DESCRIPTION	

**EROSION AND SEDIMENT CONTROL MEASURES**

Std. #	Description	Symbol
1630.03	Streambank Reforestation	
1630.05	Temporary Silt Ditch	
1605.01	Temporary Diversion	
1605.01	Temporary Silt Fence	
1606.01	Special Sediment Control Fence	
1622.01	Temporary Berms and Slope Drains	
1630.01	Riser Basin	
1630.02	Silt Basin Type B	
1633.01	Temporary Rock Silt Check Type-A	
1633.02	Temporary Rock Silt Check Type-B	
1634.01	Temporary Rock Sediment Dam Type-A	
1634.02	Temporary Rock Sediment Dam Type-B	
1635.01	Rock Pipe Inlet Sediment Trap Type-A	
1635.02	Rock Pipe Inlet Sediment Trap Type-B	
1630.04	Stilling Basin	
Rock Inlet Sediment Trap:		
1632.01	Type A	
1632.02	Type B	
1632.03	Type C	
	Skimmer Basin	
	Tiered Skimmer Basin	

**THIS PROJECT CONTAINS  
EROSION CONTROL PLANS  
FOR CLEARING AND  
GRUBBING PHASE OF  
CONSTRUCTION.**

**HIGH QUALITY WATER(S) EXIST  
ON THIS PROJECT**  
  
High Quality Water Zone(s) Exist  
From Sta. \_\_\_\_\_ Beginning  
to Sta. \_\_\_\_\_ End  
Refer To E. C. Special Provisions  
for Special Considerations.

**THIS PROJECT HAS  
BEEN DESIGNED TO  
SENSITIVE WATERSHED  
STANDARDS**

**ENVIRONMENTALLY  
SENSITIVE AREA(S) EXIST  
ON THIS PROJECT**  
  
Refer To E. C. Special Provisions  
for Special Considerations.

**GRAPHIC SCALE**

0

PLANS

0

PROFILE (HORIZONTAL)

0

PROFILE (VERTICAL)

ROADSIDE ENVIRONMENTAL UNIT  
DIVISION OF HIGHWAYS  
STATE OF NORTH CAROLINA

Prepared In the Office of:  
**ROADSIDE ENVIRONMENTAL UNIT**  
1 South Wilmington St.  
Raleigh, NC 27611  
  
**2002 STANDARD SPECIFICATIONS**

Roadway Standard Drawings

The following roadway metric standards as appear in "Roadway Standard Drawings"- Roadway Design Unit - N. C. Department of Transportation - Raleigh, N. C., dated January 20, 2002 and the latest revision thereto are applicable to this project and by reference hereby are considered a part of these plans.

1605.01 Temporary Silt Fence	1632.03 Rock Inlet Sediment Trap Type C
1622.01 Temporary Berms and Slope Drains	1633.01 Temporary Rock Silt Check Type A
	1633.02 Temporary Rock Silt Check Type B
	1634.02 Temporary Rock Sediment Dam Type B

28-Nov-2006 14:43 \\spproject\env\mental\desig\bl1381\_rdy\_tsh.dgn

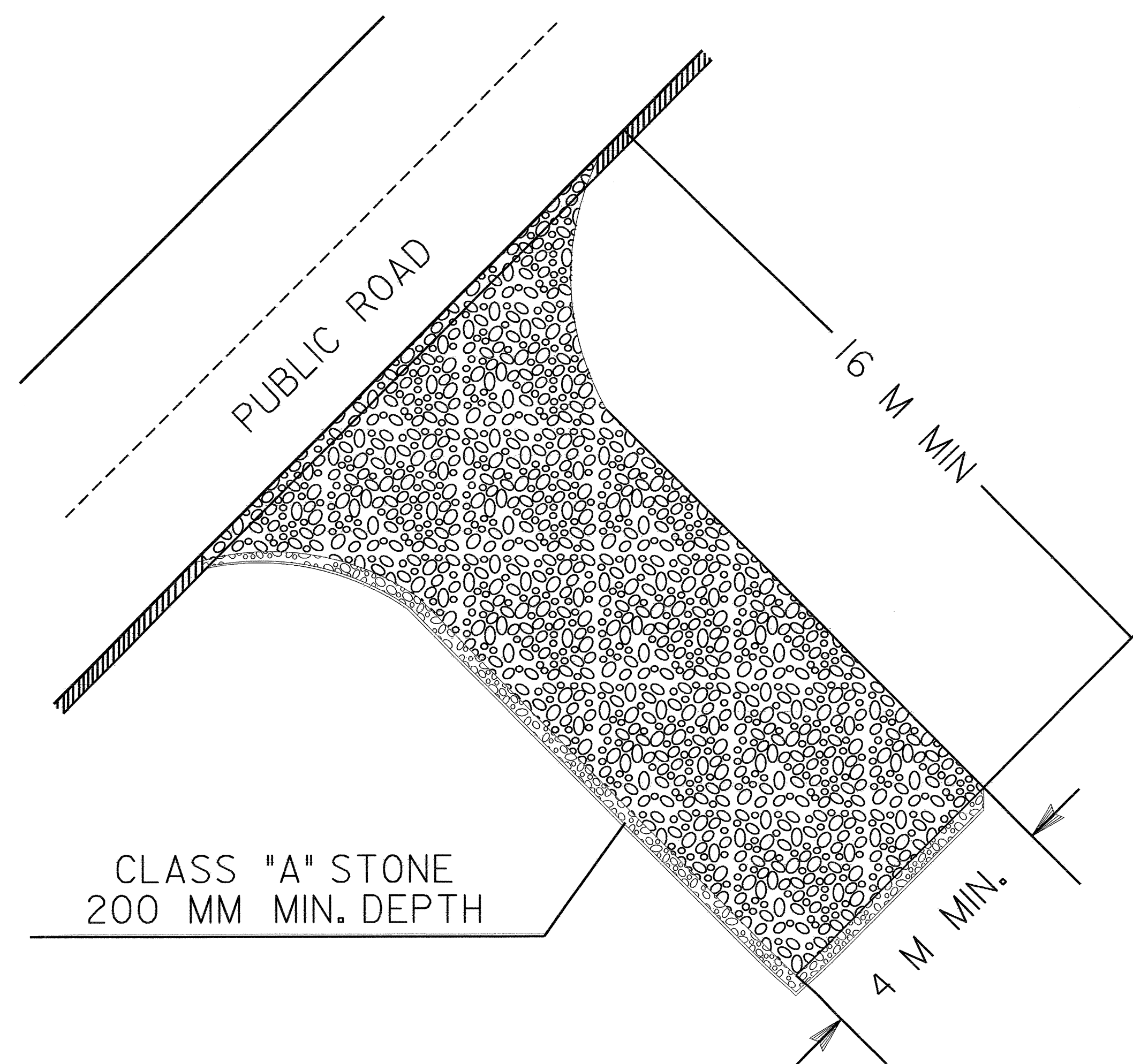


PROJECT REFERENCE NO. B-1381	SHEET NO. EC-2
R/W SHEET NO.	
ROADWAY DESIGN ENGINEER	HYDRAULICS ENGINEER

## TEMPORARY GRAVEL CONSTRUCTION ENTRANCE

### NOTES:

1. TURNING RADIUS SUFFICIENT TO ACCOMODATE LARGE TRUCKS SHALL BE PROVIDED.
2. ENTRANCE(S) SHOULD BE LOCATED TO PROVIDE FOR UTILIZATION BY ALL CONSTRUCTION VEHICLES.
3. MUST BE MAINTAINED IN A CONDITION WHICH WILL PREVENT TRACKING OR DIRECT FLOW OF MUD ONTO STREETS. PERIODIC TOPDRESSING WITH STONE WILL BE NECESSARY.
4. ANY MATERIAL TRACKED ONTO THE ROADWAY MUST BE CLEANED UP IMMEDIATELY.
5. GRAVEL CONSTRUCTION ENTRANCE SHALL BE LOCATED AT ALL POINTS OF INGRESS AND EGRESS UNTIL SITE IS STABILIZED. FREQUENT CHECKS OF THE DEVICE AND TIMELY MAINTENANCE MUST BE PROVIDED.
6. NUMBER AND LOCATION OF CONSTRUCTION ENTRANCES TO BE DETERMINED BY THE ENGINEER

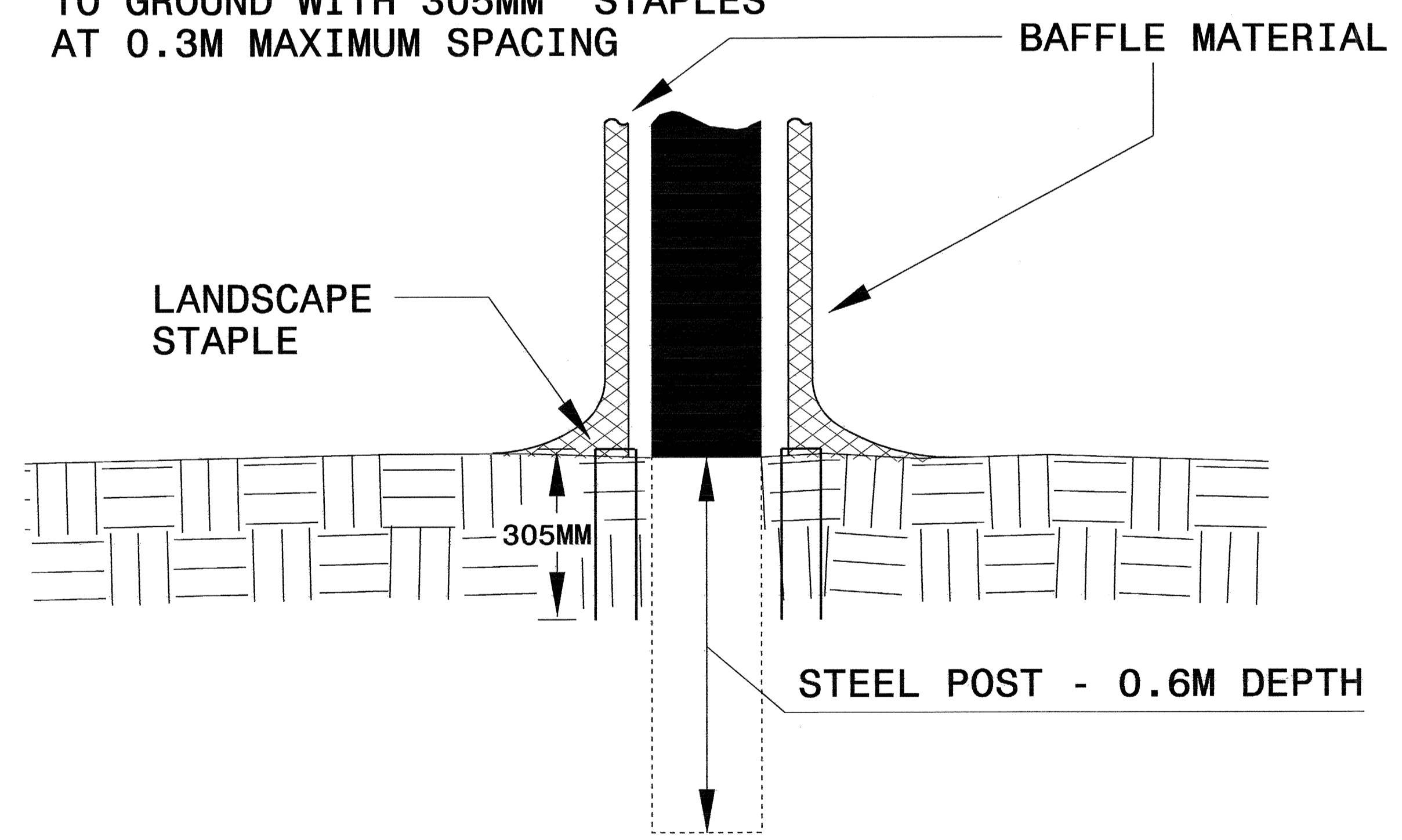
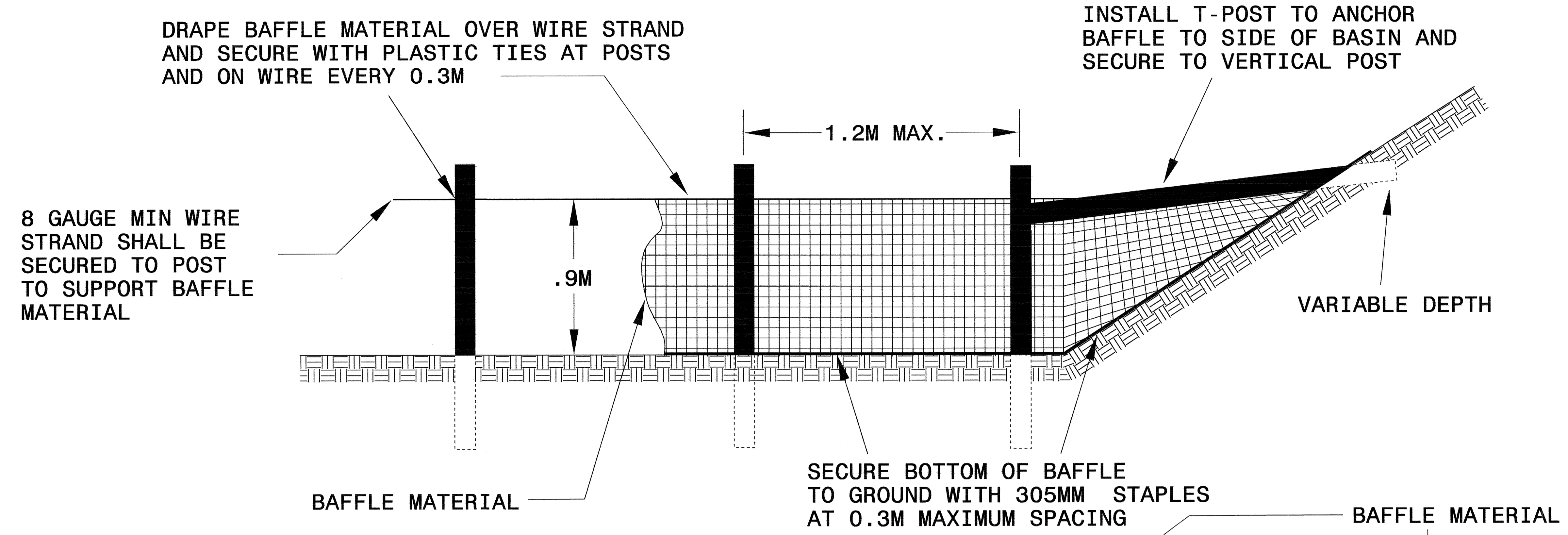


NOTE: FILTER FABRIC TO BE PLACED BENEATH STONE



PROJECT REFERENCE NO. B-1381	SHEET NO. EC-2A
R/W SHEET NO.	
ROADWAY DESIGN ENGINEER	HYDRAULICS ENGINEER

# COIR FIBER BAFFLE DETAIL



NOTE: INSTALL THREE(3) COIR FIBER BAFFLES IN SILT BASINS AT DRAINAGE OUTLETS WITH A SPACING OF  $\frac{1}{4}$  THE BASIN LENGTH. TWO(2) COIR FIBER BAFFLES CAN BE INSTALLED IN SILT BASINS LESS THAN 6 M IN LENGTH WITH A SPACING OF  $\frac{1}{3}$  THE BASIN LENGTH.


BAFFLE MATERIAL SHALL BE SECURED TO THE BOTTOM AND SIDES OF BASIN USING 305MM LANDSCAPE STAPLES

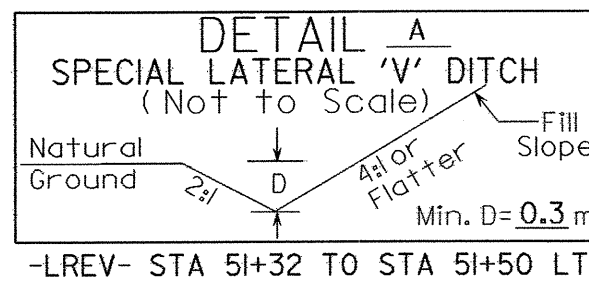




28-NOV-2006 14:48 C:\Users\jrb\Documents\envr\commen\ca\design\1381\rdw\sh4.dgn

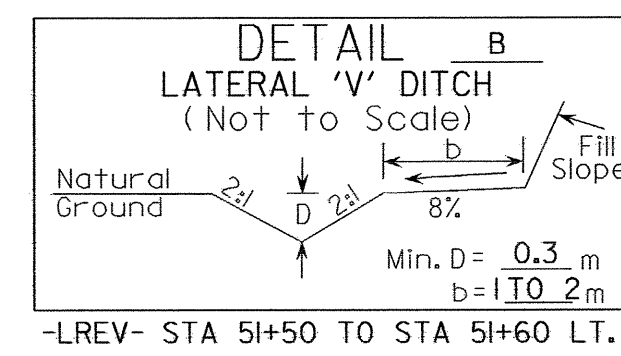
NOTE:  
UTILIZE TEMPORARY ROCK SEDIMENT DAM TYPE - B AS STILLING BASIN WHERE APPLICABLE.

 5 0 10 CONST.REV. R/W REV.	PROJECT REFERENCE NO. B-1381	SHEET NO. EC-5/CONST.4
	R/W SHEET NO.	
ROADWAY DESIGN ENGINEER	HYDRAULICS ENGINEER	

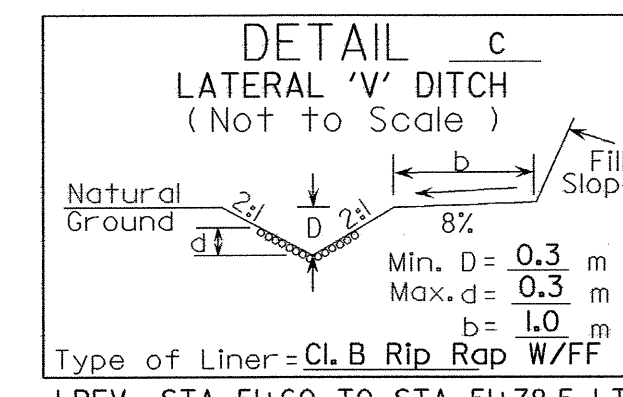


-LREV- STA 51+32 TO STA 51+50 LT.

1  
AMOS McLAMB  
D.B. 1185, PG. 09  
22.13 Ac. (TAX TOTAL)  
8.956 Ha



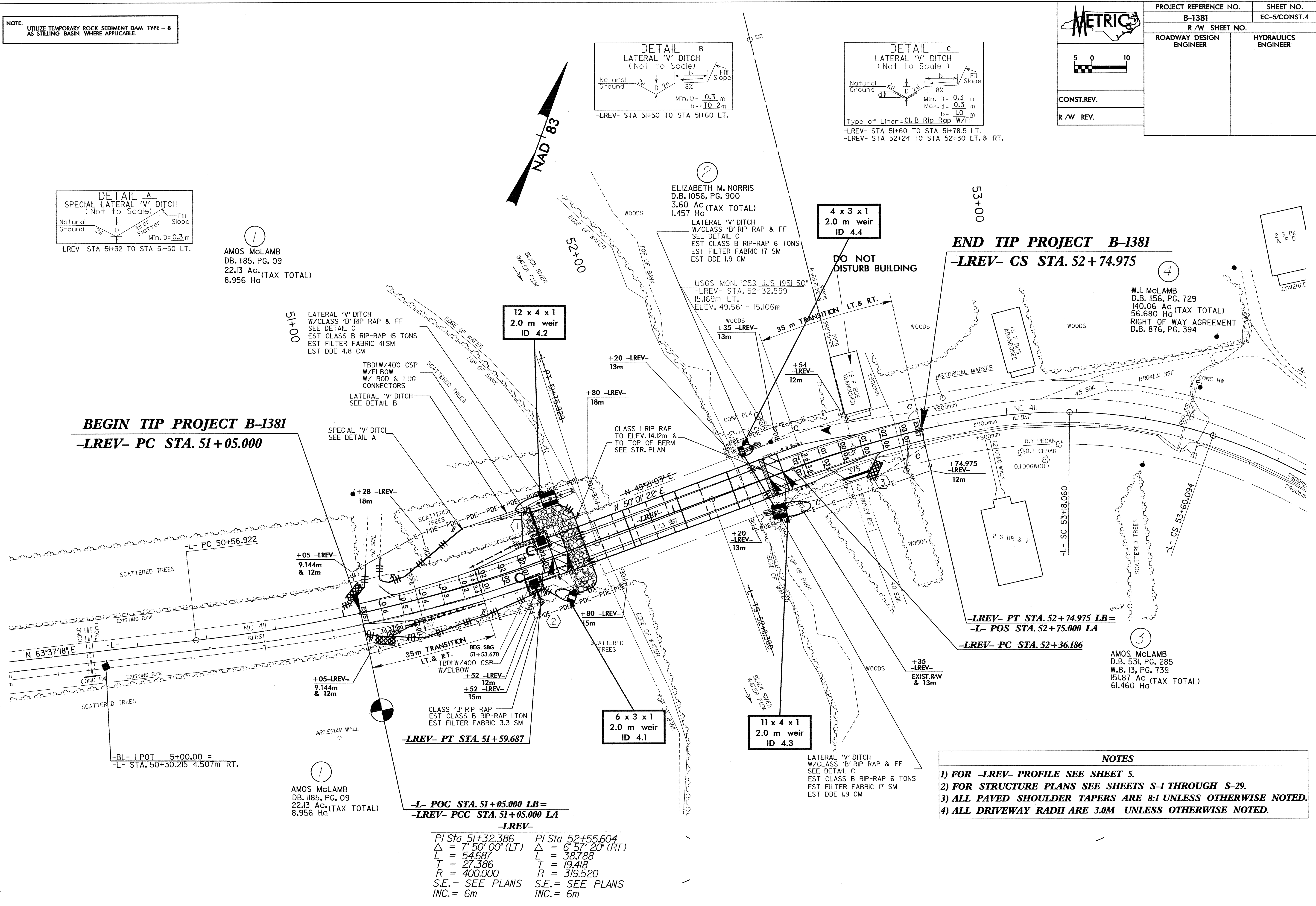
-LREV- STA 51+50 TO STA 51+60 LT.



Type of Liner = Cl. B Rip Rap W/FF  
-LREV- STA 51+60 TO STA 51+78.5 LT.  
-LREV- STA 52+24 TO STA 52+30 LT. & RT.

**BEGIN TIP PROJECT B-1381**  
**-LREV- PC STA. 51+05.000**

**END TIP PROJECT B-1381**  
**-LREV- CS STA. 52+74.975**



PI Sta 51+32.386	PI Sta 52+55.604
Δ = 7° 50' 00" (LT)	Δ = 6° 57' 20" (RT)
L = 54.687	L = 38.788
T = 27.386	T = 19.418
R = 400.000	R = 319.520
S.E. = SEE PLANS	S.E. = SEE PLANS
INC. = 6m	INC. = 6m

- NOTES**
- 1) FOR -LREV- PROFILE SEE SHEET 5.
  - 2) FOR STRUCTURE PLANS SEE SHEETS S-1 THROUGH S-29.
  - 3) ALL PAVED SHOULDER TAPERS ARE 8:1 UNLESS OTHERWISE NOTED.
  - 4) ALL DRIVEWAY RADII ARE 3.0M UNLESS OTHERWISE NOTED.