

# TEMPORARY PAVEMENT MARKING SCHEDULE

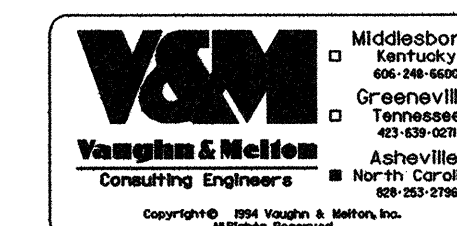
FOR EACH PAINT PAVEMENT MARKING ITEM, 1X IMPLIES A SINGLE APPLICATION,  
2X IMPLIES TWO APPLICATIONS, AND 3X IMPLIES THREE APPLICATIONS.

PROJECT REFERENCE NO. <b>37840</b>	SHEET NO. <b>PM-1</b>
RW SHEET NO.	
ROADWAY DESIGN ENGINEER	HYDRAULICS ENGINEER

SYMBOL	DESCRIPTION	QUANTITY BREAKDOWN	PAY ITEM	TOTAL QUANTITY	SUBTOTAL
PAVEMENT MARKING LINES					
AC	2' WHITE MINISKIP (1X)	260 FT	PAINT (4")	260 FT	
AD	WHITE EDGELINE (1X)	25400 FT	PAINT (4")	25400 FT	
AU	YELLOW DOUBLE CENTER (2X)	15000 FT	PAINT (4")	30000 FT	55660 FT
AO	WHITE STOP BAR (1X)	164 FT	PAINT (24")	164 FT	164 FT
AY	YELLOW DIAGONAL (1X)	120 FT	PAINT (8")	120 FT	120 FT
AX	YELLOW DOUBLE CENTER (2X)	370 FT	COLD APPLIED PLASTIC TYPE IV (4")	740 FT	
AZ	WHITE EDGELINE (1X)	440 FT	COLD APPLIED PLASTIC TYPE IV (4")	440 FT	1180 FT
PAVEMENT MARKING SYMBOLS					
BD	LEFT TURN ARROW (1X)	3 EA	PAINT	3 EA	
BE	RIGHT TURN ARROW (1X)	1 EA	PAINT	1 EA	4 EA

# FINAL PAVEMENT MARKING SCHEDULE

SYMBOL	DESCRIPTION	QUANTITY BREAKDOWN	PAY ITEM	TOTAL QUANTITY	SUBTOTAL
PAVEMENT MARKING LINES					
AA	WHITE SOLID LINE	100 FT	THERMOPLASTIC (4", 120 MILS)	100 FT	
AC	2' WHITE MINISKIP	120 FT	THERMOPLASTIC (4", 120 MILS)	120 FT	
AD	WHITE SOLID LANE LINE	6070 FT	THERMOPLASTIC (4", 120 MILS)	6070 FT	
AF	10' YELLOW SKIP	830 FT	THERMOPLASTIC (4", 120 MILS)	830 FT	
AP	YELLOW SOLID LANE LINE	3470 FT	THERMOPLASTIC (4", 120 MILS)	3470 FT	
AU	YELLOW DOUBLE CENTER LINE	3265 FT	THERMOPLASTIC (4", 120 MILS)	3265 FT	13855 FT
AY	YELLOW DIAGONAL	60 FT	THERMOPLASTIC (8", 120 MILS)	60 FT	
AS	PEDESTRIAN CROSSWALK	82 FT	THERMOPLASTIC (8", 120 MILS)	82 FT	142 FT
AO	WHITE STOP BAR	180 FT	THERMOPLASTIC (24", 120 MILS)	180 FT	180 FT
PAVEMENT MARKING SYMBOLS					
BC	STRAIGHT ARROW	2 EA	THERMOPLASTIC (90 MILS)	2 EA	
BD	LEFT TURN ARROW	16 EA	THERMOPLASTIC (90 MILS)	16 EA	
BE	RIGHT TURN ARROW	1 EA	THERMOPLASTIC (90 MILS)	1 EA	19 EA
BF	SCHOOL SYMBOL (CHARACTER)	12 EA	THERMOPLASTIC CHARACTER (120 MILS)	12 EA	12 EA



APPROVED: *[Signature]* DATE: 2/2/07

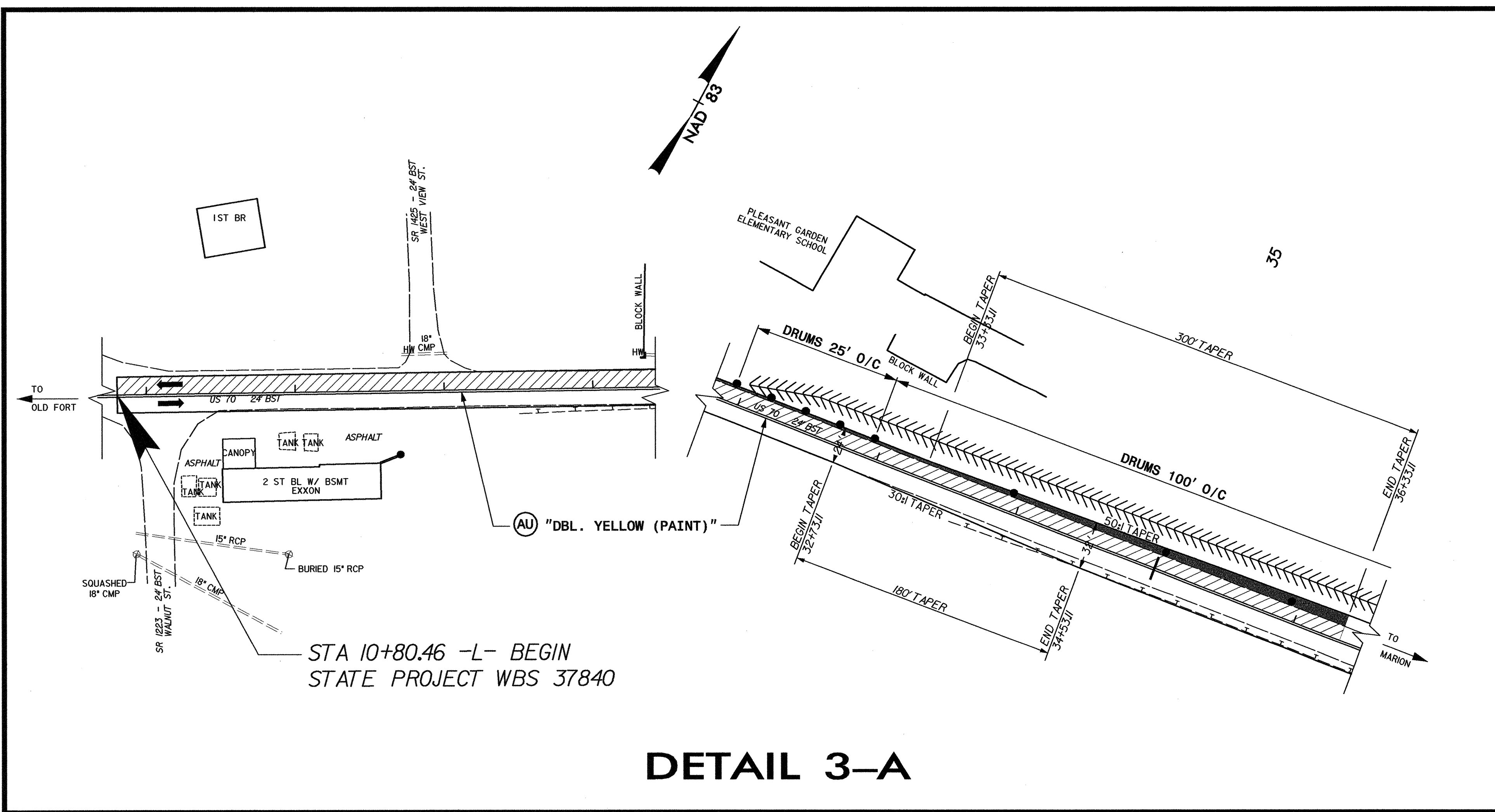
SEAL

**TEMPORARY & FINAL PAVEMENT MARKING SCHEDULE**

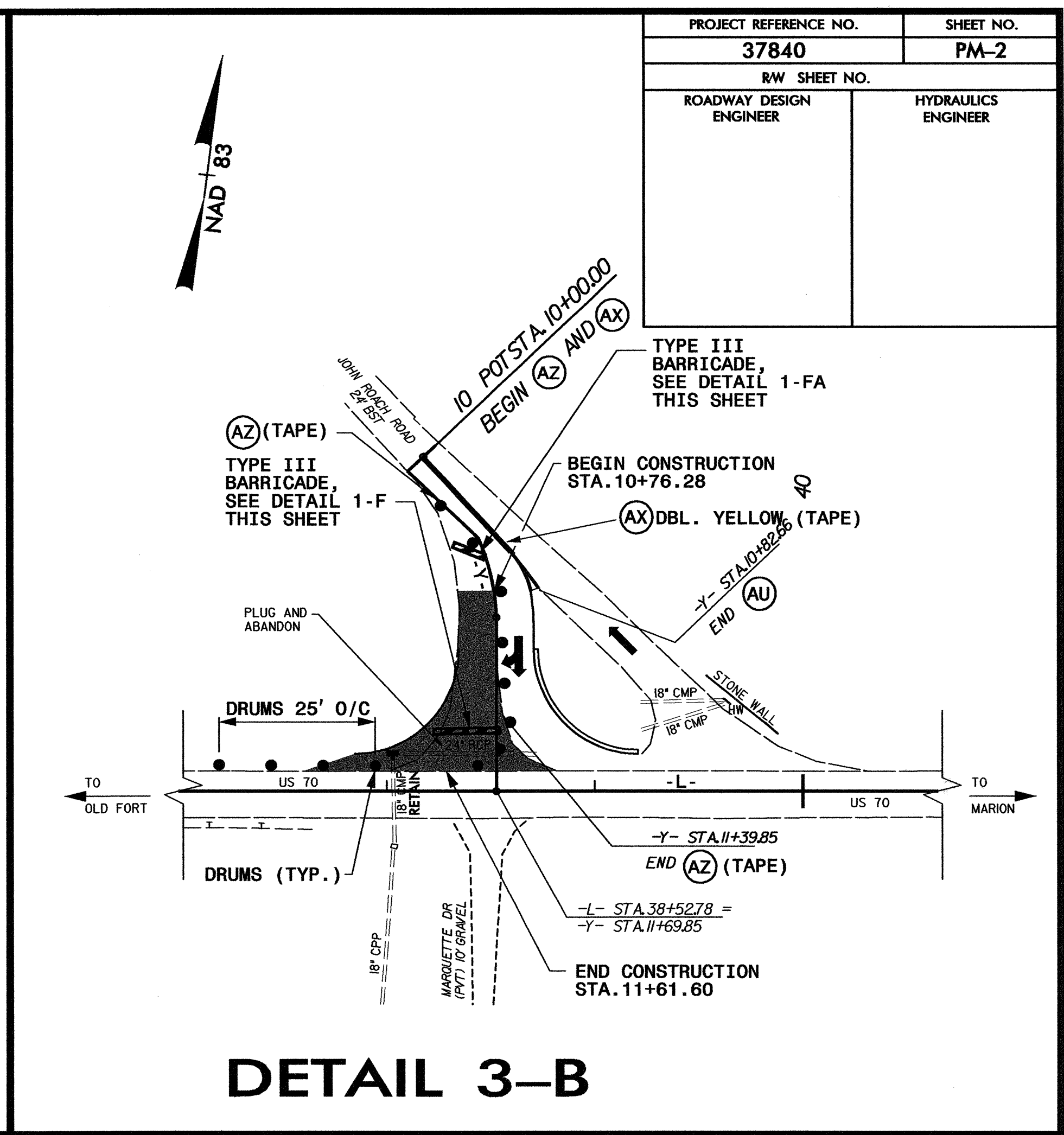
SCALE: NONE		REVISIONS
DATE: JUNE 06		
DESIGN BY: SF		
REVIEWED BY: RMS		

CADD FILE: MA1303BRPM01.DGN

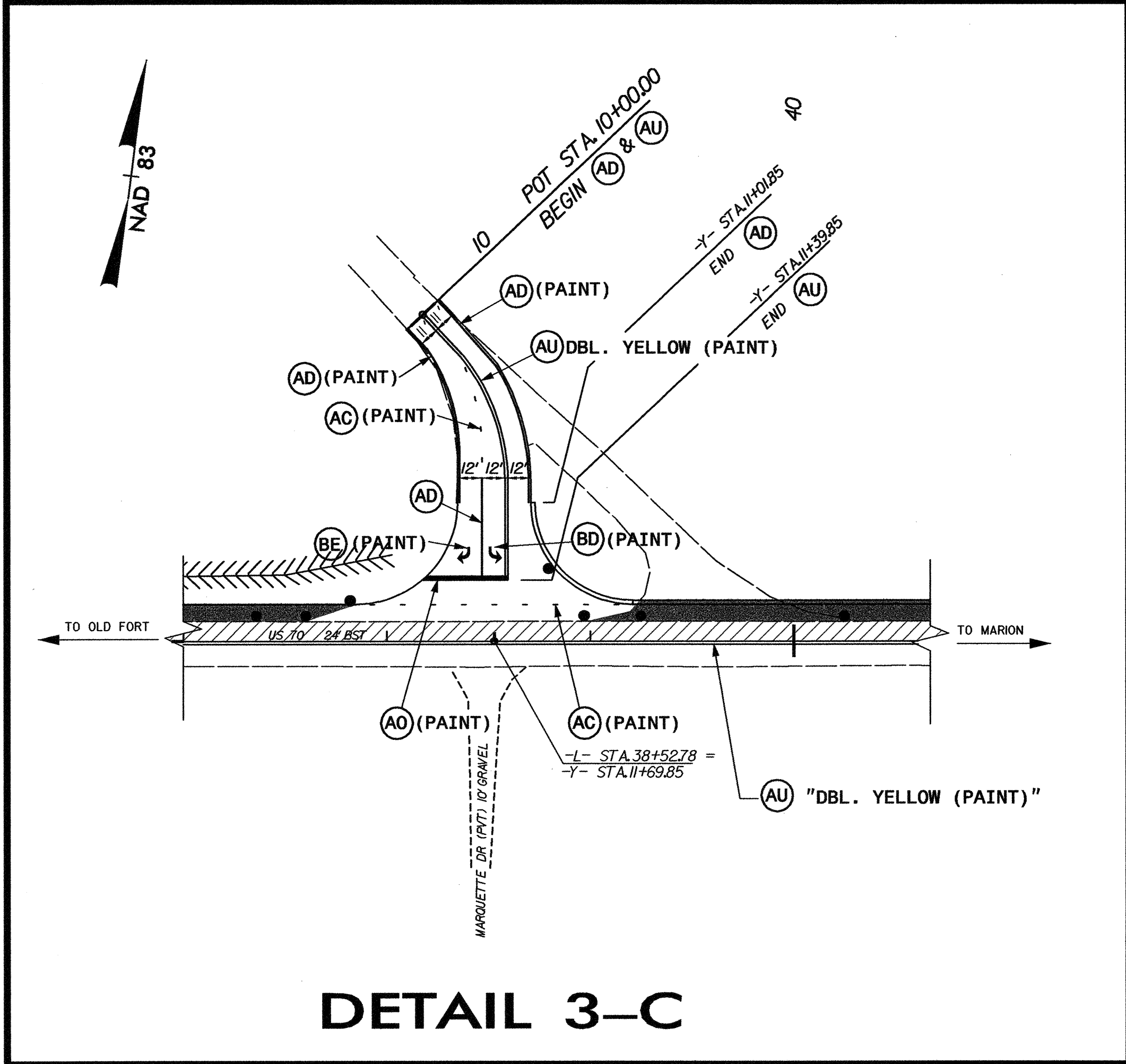
PROJECT REFERENCE NO.	SHEET NO.
37840	PM-2
R/W SHEET NO.	
ROADWAY DESIGN ENGINEER	HYDRAULICS ENGINEER



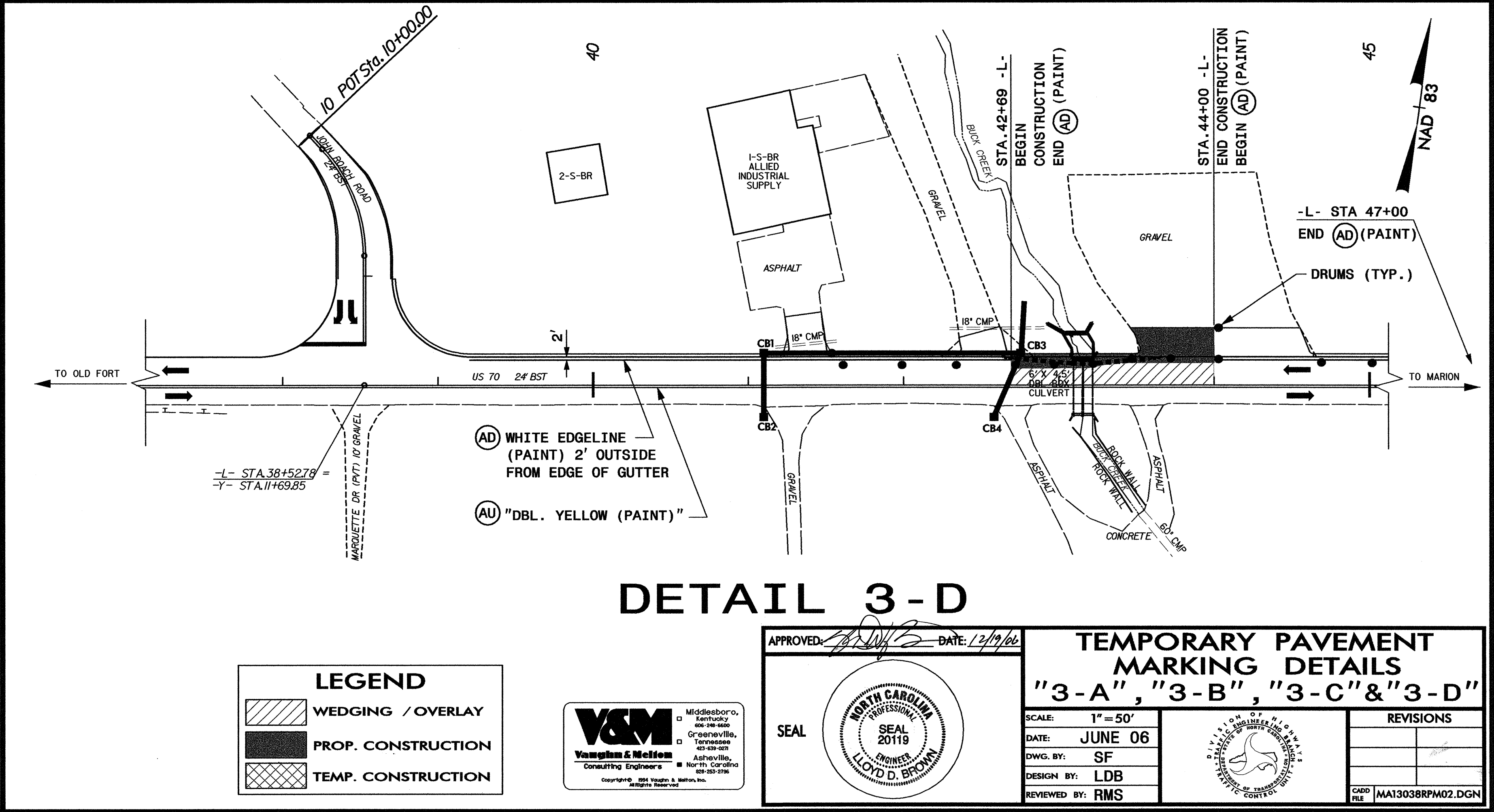
DETAIL 3-A



DETAIL 3-B



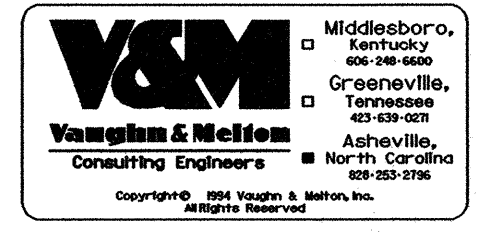
DETAIL 3-C



DETAIL 3-D

**LEGEND**

	WEDGING / OVERLAY
	PROP. CONSTRUCTION
	TEMP. CONSTRUCTION



APPROVED: DATE: 12/17/06

**TEMPORARY PAVEMENT MARKING DETAILS**  
**"3-A", "3-B", "3-C" & "3-D"**

SCALE: 1" = 50'

DATE: JUNE 06  
 DWG. BY: SF  
 DESIGN BY: LDB  
 REVIEWED BY: RMS

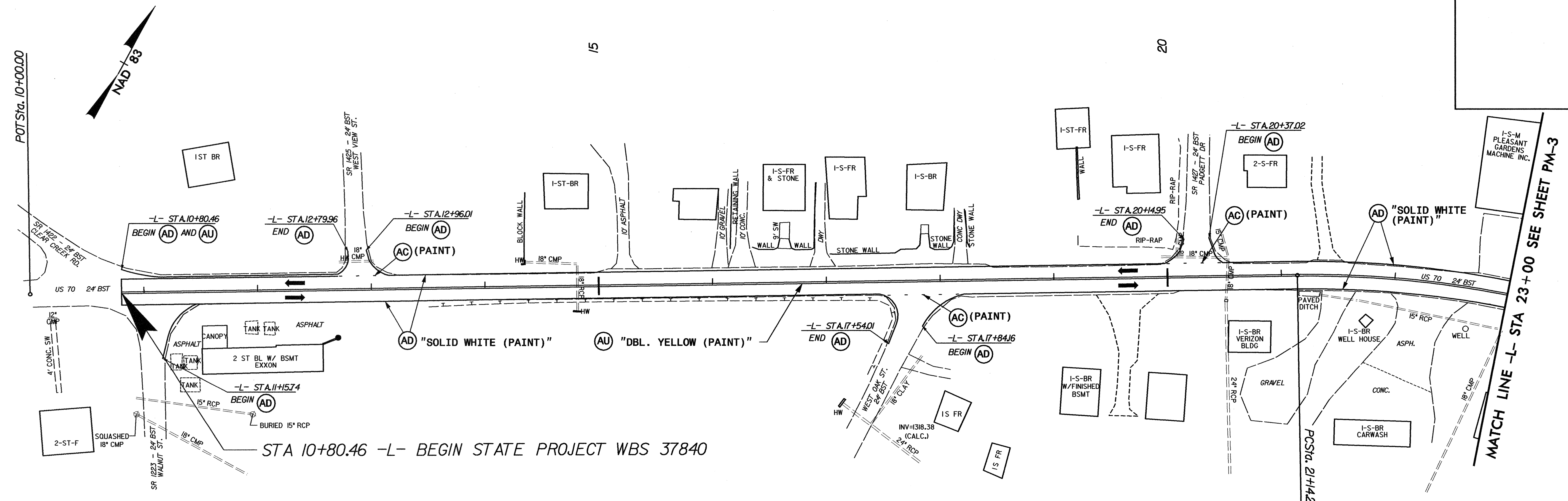
SEAL:

REVISIONS

CADD FILE: MA13038RPM02.DGN

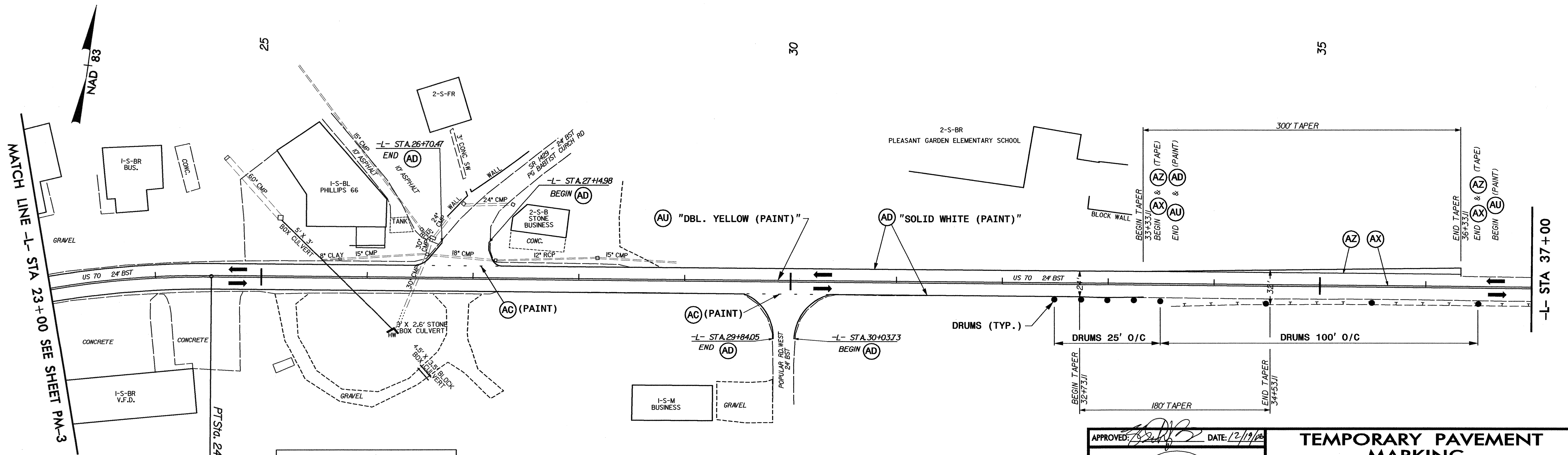


PROJECT REFERENCE NO. <b>37840</b>	SHEET NO. <b>PM-3</b>
RW SHEET NO.	
ROADWAY DESIGN ENGINEER	HYDRAULICS ENGINEER



STA 10+80.46 -L- BEGIN STATE PROJECT WBS 37840

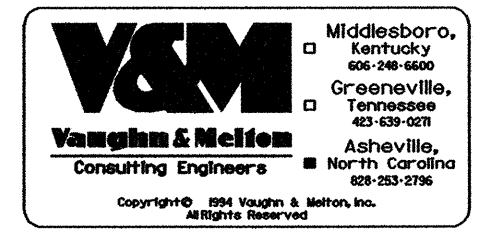
**DETAIL 3-E**



**LEGEND**

	WEDGING / OVERLAY
	PROP. CONSTRUCTION
	TEMP. CONSTRUCTION

**DETAIL 3-F**



APPROVED: *[Signature]* DATE: 12/19/20

**TEMPORARY PAVEMENT MARKING DETAILS "3-E" & "3-F"**

SCALE: 1" = 50'

DATE: JUNE 06

DWG. BY: SF

DESIGN BY: LDB

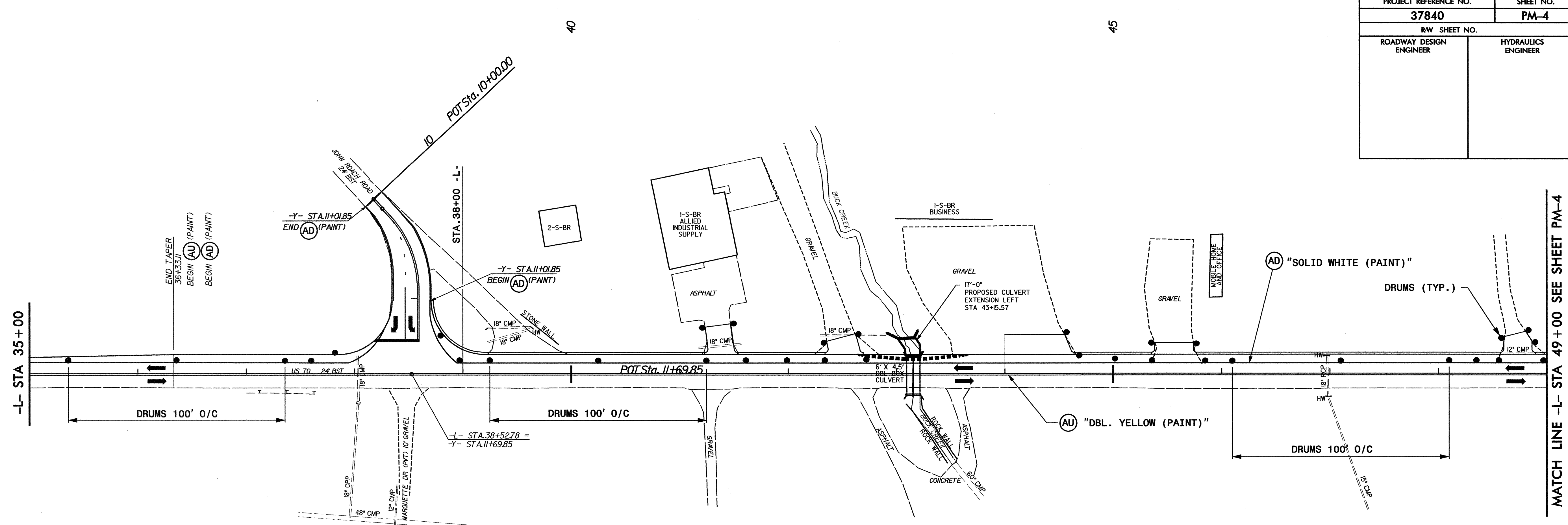
REVIEWED BY: RMS

SEAL: *[Professional Seal]*

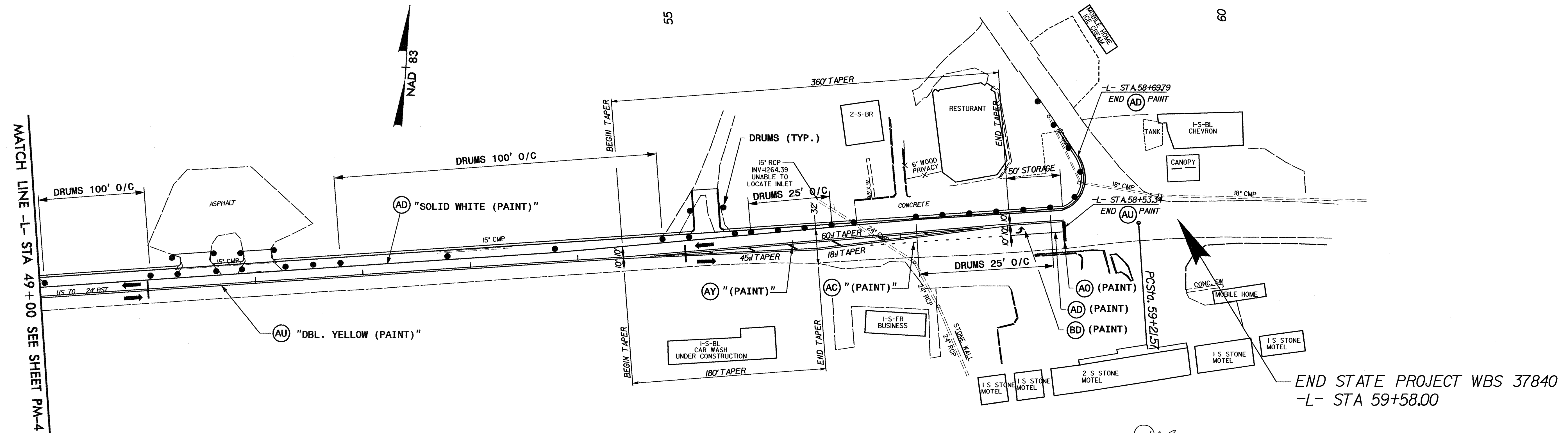
REVISIONS

CADD FILE: MA13038RPM03.DGN

PROJECT REFERENCE NO.	SHEET NO.
37840	PM-4
RW SHEET NO.	
ROADWAY DESIGN ENGINEER	HYDRAULICS ENGINEER



DETAIL 3-G



DETAIL 3-H

APPROVED: *[Signature]* DATE: 12/19/12

**TEMPORARY PAVEMENT MARKING DETAILS**  
**"3-G" & "3-H"**

SCALE: NONE  
DATE: JUNE 06  
DWG. BY: SF  
DESIGN BY: LDB  
REVIEWED BY: RMS

SEAL: *[Professional Seal]*

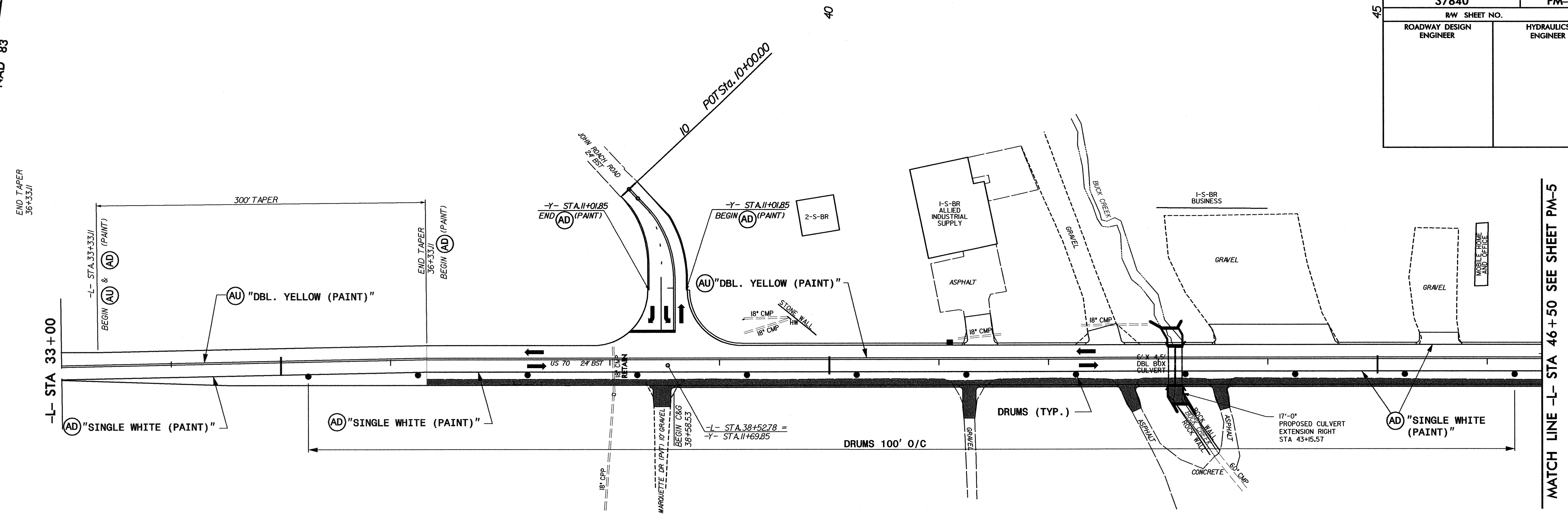
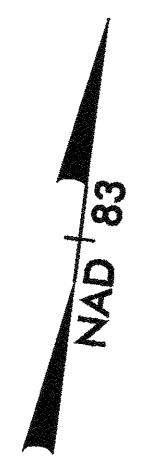
Middleboro, Tennessee  
Vaughn & Melton  
Consulting Engineers

REVISIONS

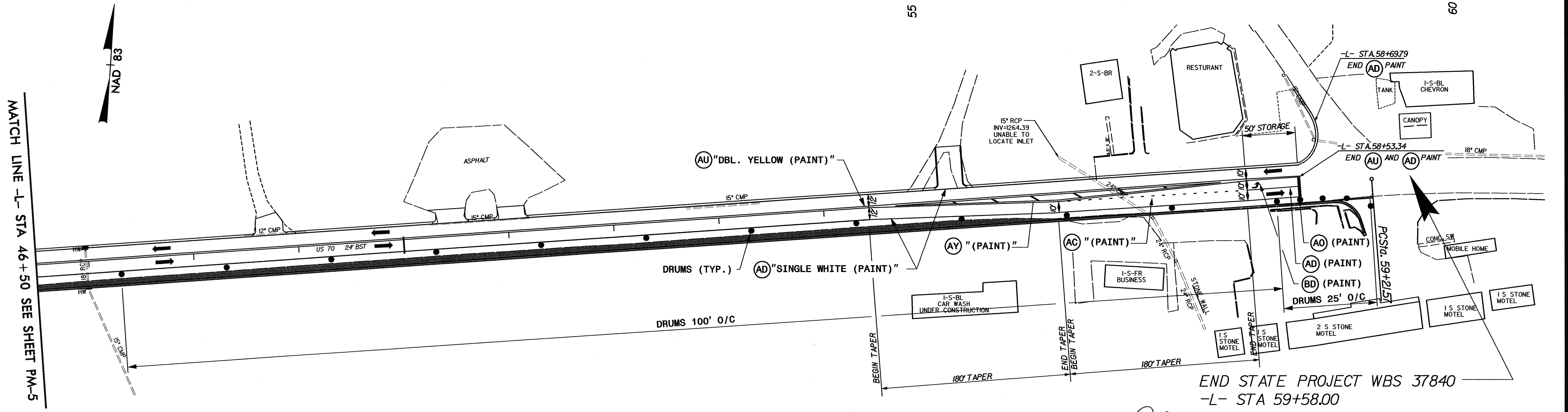
MA13038RPM04.DGN



PROJECT REFERENCE NO. <b>37840</b>	SHEET NO. <b>PM-5</b>
RW SHEET NO.	
ROADWAY DESIGN ENGINEER	HYDRAULICS ENGINEER



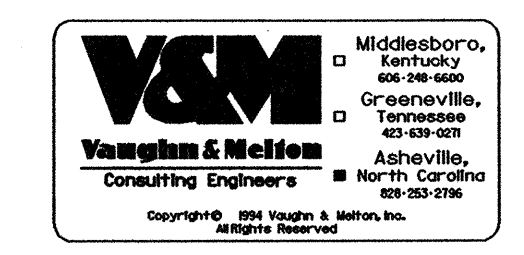
**DETAIL 3-I**



**DETAIL 3-J**

**LEGEND**

	WEDGING / OVERLAY
	PROP. CONSTRUCTION
	TEMP. CONSTRUCTION



APPROVED: DATE: 12/17/06

SEAL:

**TEMPORARY PAVEMENT MARKING DETAILS "3-I" & "3-J"**

SCALE: NONE  
 DATE: JUNE 06  
 DWG. BY: SF  
 DESIGN BY: LDB  
 REVIEWED BY: RMS

REVISIONS	

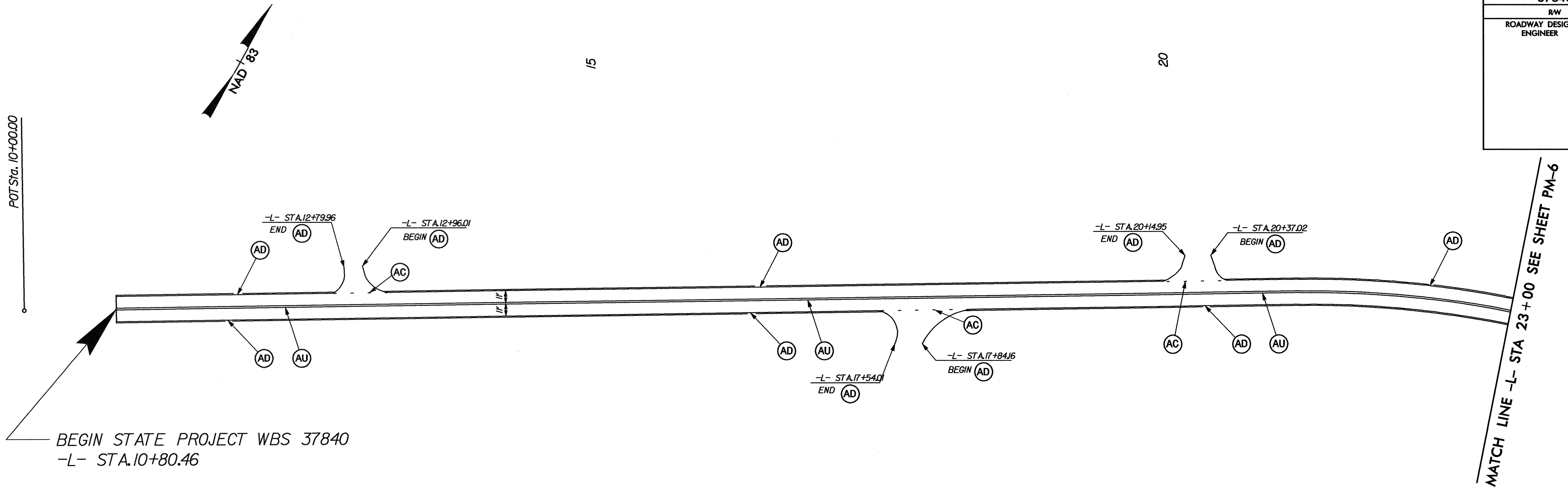
CHD FILE: MA13038RPM5.DGN

MATCH LINE -L- STA 46+50 SEE SHEET PM-5

MATCH LINE -L- STA 46+50 SEE SHEET PM-5

END STATE PROJECT WBS 37840  
 -L- STA 59+58.00

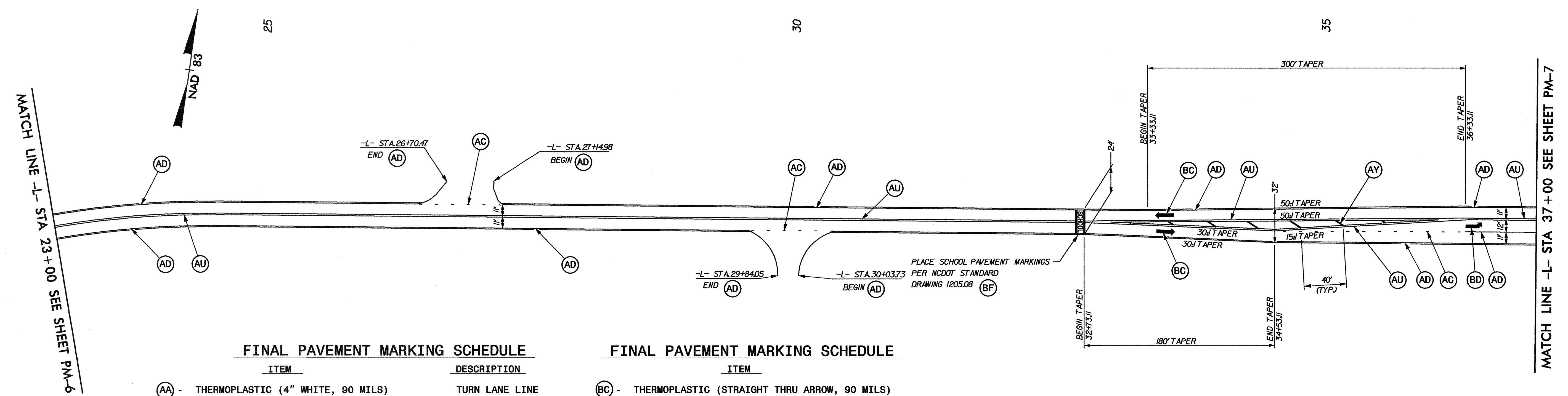
PROJECT REFERENCE NO.	SHEET NO.
37840	PM-6
RW SHEET NO.	
ROADWAY DESIGN ENGINEER	HYDRAULICS ENGINEER



BEGIN STATE PROJECT WBS 37840  
-L- STA.10+80.46

MATCH LINE -L- STA 23+00 SEE SHEET PM-6

### DETAIL 3-K



MATCH LINE -L- STA 23+00 SEE SHEET PM-6

MATCH LINE -L- STA 37+00 SEE SHEET PM-7

#### FINAL PAVEMENT MARKING SCHEDULE

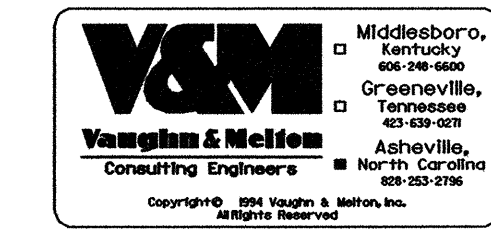
ITEM	DESCRIPTION
(AA) - THERMOPLASTIC (4" WHITE, 90 MILS)	TURN LANE LINE
(AC) - THERMOPLASTIC (4" WHITE, 120 MILS)	4" x 2' MINI-SKIP
(AD) - THERMOPLASTIC (4" WHITE, 120 MILS)	SOLID LANE LINE
(AF) - THERMOPLASTIC (4" YELLOW, 120 MILS)	10' YELLOW SKIP
(AO) - THERMOPLASTIC (24" WHITE, 120 MILS)	STOP BAR
(AP) - THERMOPLASTIC (4" YELLOW, 120 MILS)	EDGELINE
(AU) - THERMOPLASTIC (4" YELLOW, 120 MILS)	DOUBLE CENTER LINE
(AY) - THERMOPLASTIC (8" YELLOW, 120 MILS)	DIAGONALS

#### FINAL PAVEMENT MARKING SCHEDULE

(BC) - THERMOPLASTIC (STRAIGHT THRU ARROW, 90 MILS)
(BD) - THERMOPLASTIC (LEFT TURN ARROW, 90 MILS)
(BE) - THERMOPLASTIC (RIGHT TURN ARROW, 90 MILS)
(BF) - THERMOPLASTIC (SCHOOL SYMBOL, 120 MILS)

PLACE SCHOOL PAVEMENT MARKINGS  
PER NCDOT STANDARD  
DRAWING 1205.08 (BF)

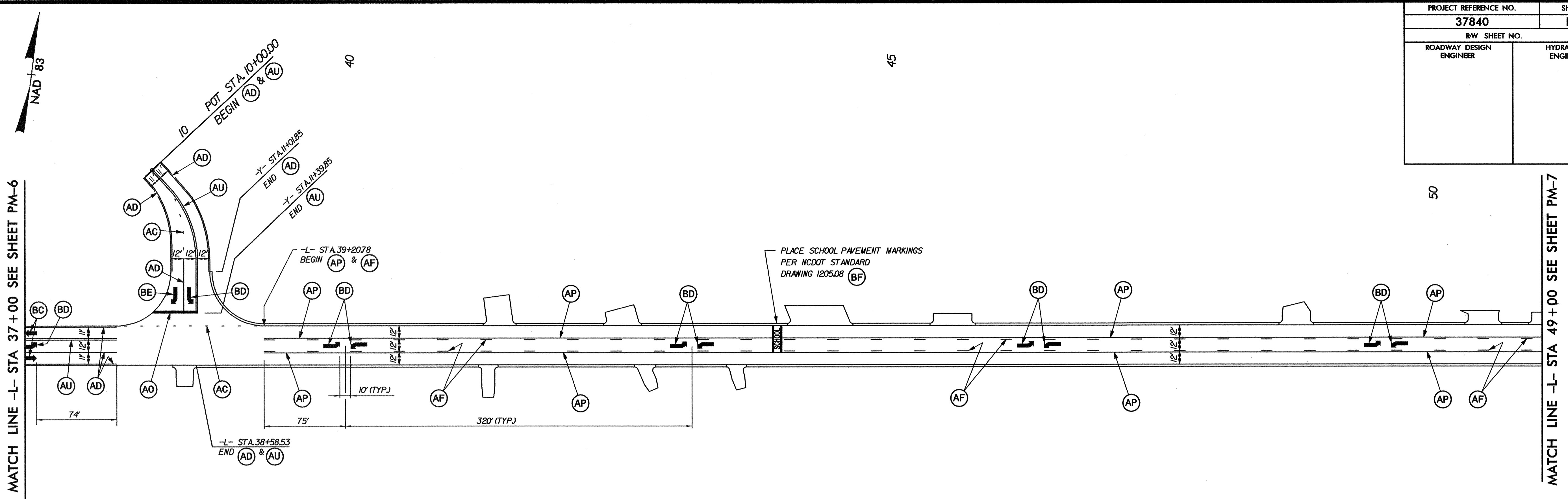
### DETAIL 3-L



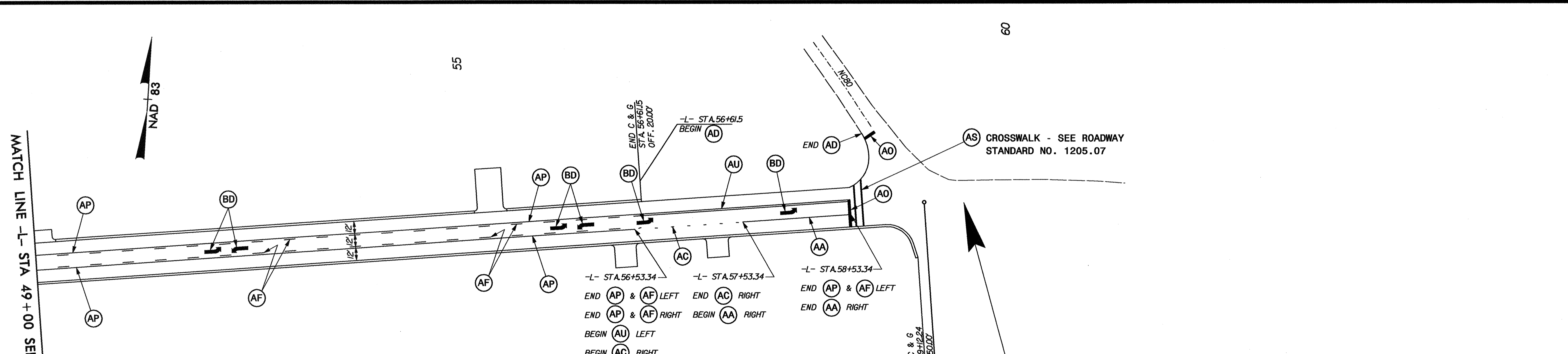
APPROVED:	DATE: 12/17/02	<h3>FINAL PAVEMENT MARKING PLAN</h3> <h4>DETAILS "3-K" &amp; "3-L"</h4>					
SEAL							
SCALE: 1" = 50'	DATE: JUNE 06	REVISIONS					
DWG. BY: SF	DESIGN BY: LDB	<table border="1"> <tr> <td> </td> <td> </td> </tr> <tr> <td> </td> <td> </td> </tr> </table>					
REVIEWED BY: RMS		<small>CADD FILE: MA13038RPM06.DGN</small>					



PROJECT REFERENCE NO.		SHEET NO.	
37840		PM-7	
RW SHEET NO.			
ROADWAY DESIGN ENGINEER		HYDRAULICS ENGINEER	



### DETAIL 3-M



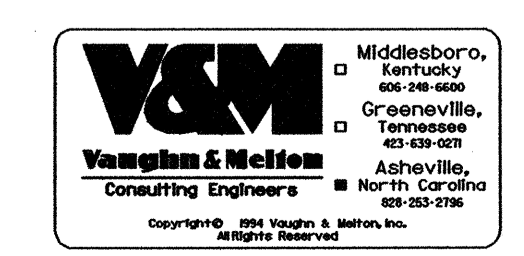
#### FINAL PAVEMENT MARKING SCHEDULE

ITEM	DESCRIPTION
(AA) - THERMOPLASTIC (4" WHITE, 90 MILS)	TURN LANE LINE
(AC) - THERMOPLASTIC (4" WHITE, 120 MILS)	4" x 2' MINI-SKIP
(AD) - THERMOPLASTIC (4" WHITE, 120 MILS)	SOLID LANE LINE
(AF) - THERMOPLASTIC (4" YELLOW, 120 MILS)	10' YELLOW SKIP
(AO) - THERMOPLASTIC (24" WHITE, 120 MILS)	STOP BAR
(AP) - THERMOPLASTIC (4" YELLOW, 120 MILS)	EDGELINE
(AU) - THERMOPLASTIC (4" YELLOW, 120 MILS)	DOUBLE CENTER LINE
(AY) - THERMOPLASTIC (8" YELLOW, 120 MILS)	DIAGONALS
(AS) - THERMOPLASTIC (8" WHITE, 120 MILS)	PEDESTRIAN CROSSWALK

#### FINAL PAVEMENT MARKING SCHEDULE

ITEM	DESCRIPTION
(BC) - THERMOPLASTIC (STRAIGHT THRU ARROW, 90 MILS)	
(BD) - THERMOPLASTIC (LEFT TURN ARROW, 90 MILS)	
(BE) - THERMOPLASTIC (RIGHT TURN ARROW, 90 MILS)	
(BF) - THERMOPLASTIC (SCHOOL SYMBOL, 120 MILS)	

### DETAIL 3-N



APPROVED: *[Signature]* DATE: 6/19/06

SEAL

### FINAL PAVEMENT MARKING PLAN DETAILS "3-M" & "3-N"

SCALE: NONE  
DATE: JUNE 06  
DWG. BY: SF  
DESIGN BY: LDB  
REVIEWED BY: RMS

REVISIONS

CARD FILE MAT303BRPM07.DGN