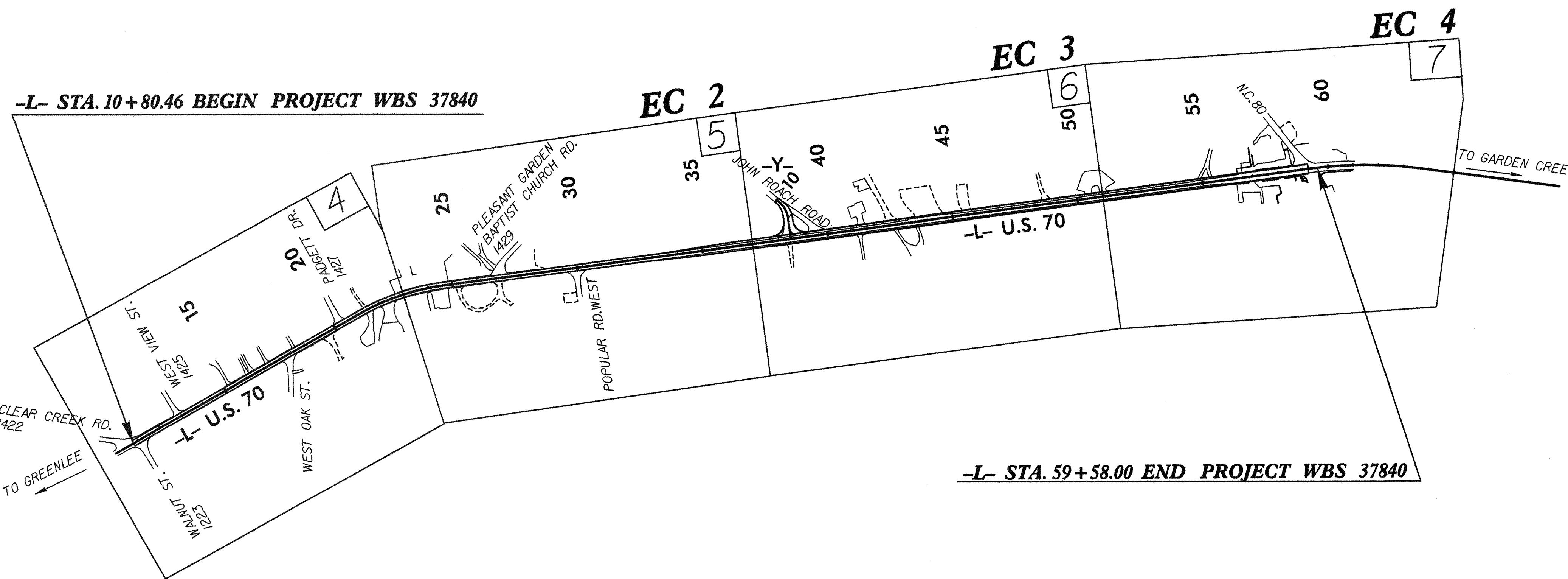
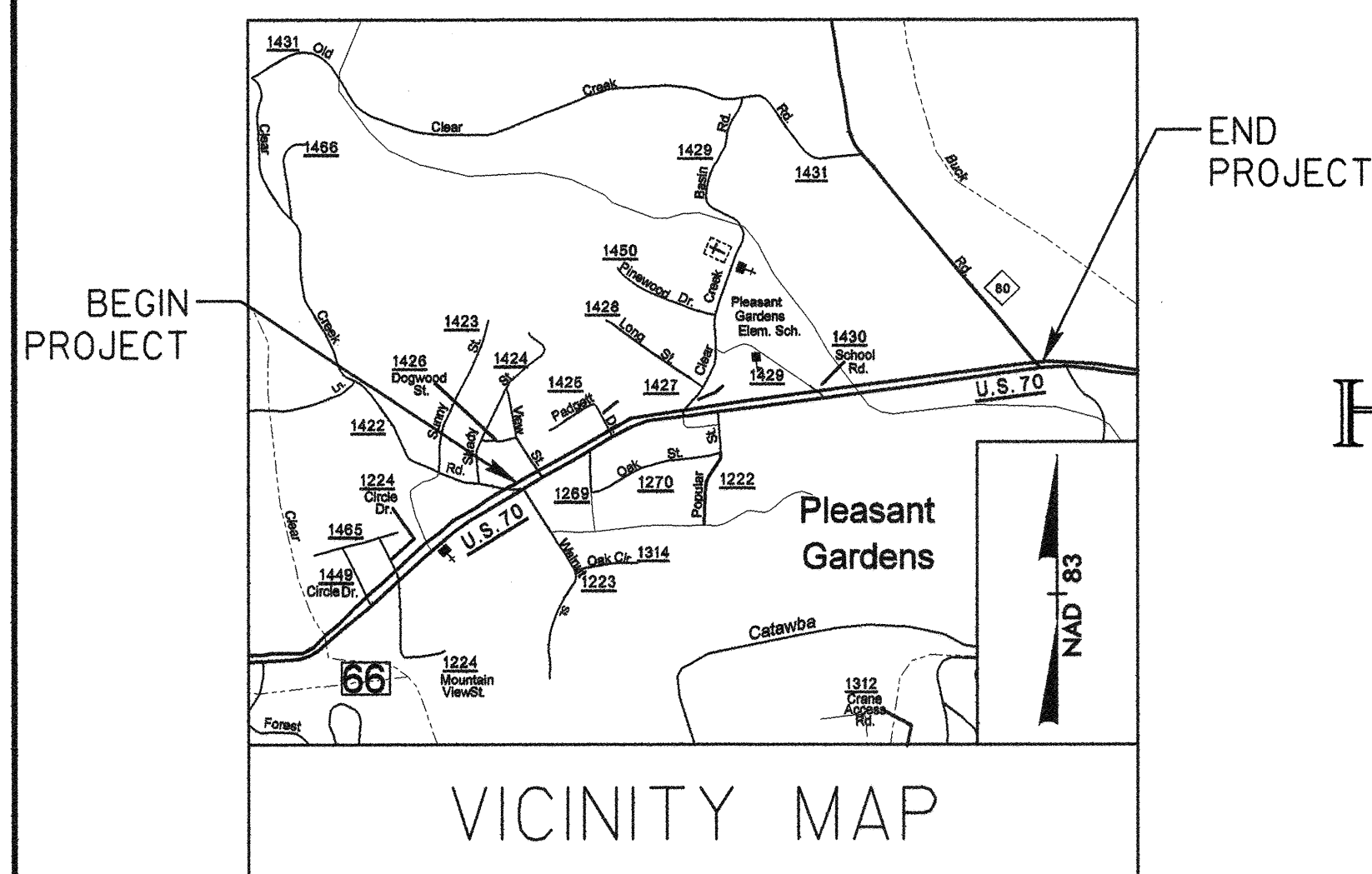


PROJECT: WBS 37840

STATE OF NORTH CAROLINA
 DIVISION OF HIGHWAYS
 PLAN FOR PROPOSED
 HIGHWAY EROSION CONTROL

LOCATION: U.S. 70 From S.R. 1422 To N.C. 80

**TYPE OF WORK: Grading, Pavement, Drainage, Guardrail,
 Structures, Utilities, and Pavement Markers
 and Markings**

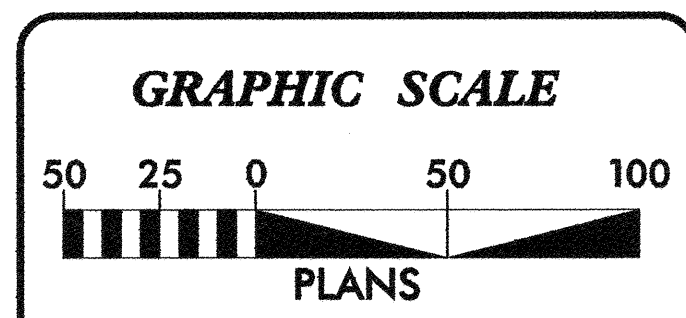


STATE	STATE PROJECT REFERENCE NO.	SHEET NO.	TOTAL SHEETS
N.C.	37840	EC-1	
STATE PROJ. NO.	F.A. PROJ. NO.	DESCRIPTION	

EROSION AND SEDIMENT CONTROL MEASURES

Std. #	Description	Symbol
1630.03	Streambank Reformation	
1630.05	Temporary Silt Ditch	
1630.05	Temporary Diversion	
1605.01	Temporary Silt Fence	
1606.01	Special Sediment Control Fence	
1622.01	Temporary Berms and Slope Drains	
1630.01	Riser Basin	
1630.02	Silt Basin Type B	
1633.01	Temporary Rock Silt Check Type-A	
1633.02	Temporary Rock Silt Check Type-B	
1634.01	Temporary Rock Sediment Dam Type-A	
1634.02	Temporary Rock Sediment Dam Type-B	
1635.01	Rock Pipe Inlet Sediment Trap Type-A	
1635.02	Rock Pipe Inlet Sediment Trap Type-B	
1636.01	Rock Silt Screen	
1630.04	Stilling Basin	
Rock Inlet Sediment Trap:		
1632.01	Type A	OR
1632.02	Type B	OR
1632.03	Type C	OR

THIS PROJECT CONTAINS
 EROSION CONTROL PLANS
 FOR CLEARING AND
 GRUBBING PHASE OF
 CONSTRUCTION.



Plans Prepared for:
DIVISION OF HIGHWAYS
 2006 STANDARD SPECIFICATIONS

Plans Prepared by:

V&M
 Vaughn & Melton
 Consulting Engineers

Middlesboro, Kentucky 606-246-6600
 Greenville, Tennessee 423-639-0271
 Asheville, North Carolina 828-253-2786

Copyright © 1994 Vaughn & Melton, Inc. All Rights Reserved

Roadway Standard Drawings

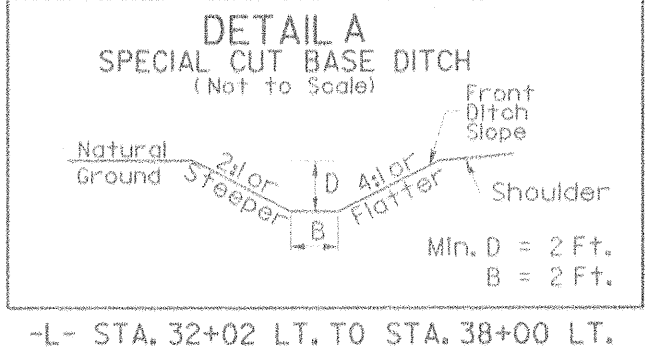
The following roadway English standards as appear in "Roadway Standard Drawings"- Roadway Design Unit - N. C. Department of Transportation - Raleigh, N. C., dated July, 2006 and the latest revision thereto are applicable to this project and by reference hereby are considered a part of these plans.

1605.01 Temporary Silt Fence	1632.03 Rock Inlet Sediment Trap Type C
1622.01 Temporary Berms and Slope Drains	1633.01 Temporary Rock Silt Check Type A
1630.02 Silt Basin Type B	1633.02 Temporary Rock Silt Check Type B
1630.04 Stilling Basin	1634.02 Temporary Rock Sediment Dam Type B
	1635.02 Rock Pipe Inlet Sediment Trap Type B

8/17/99

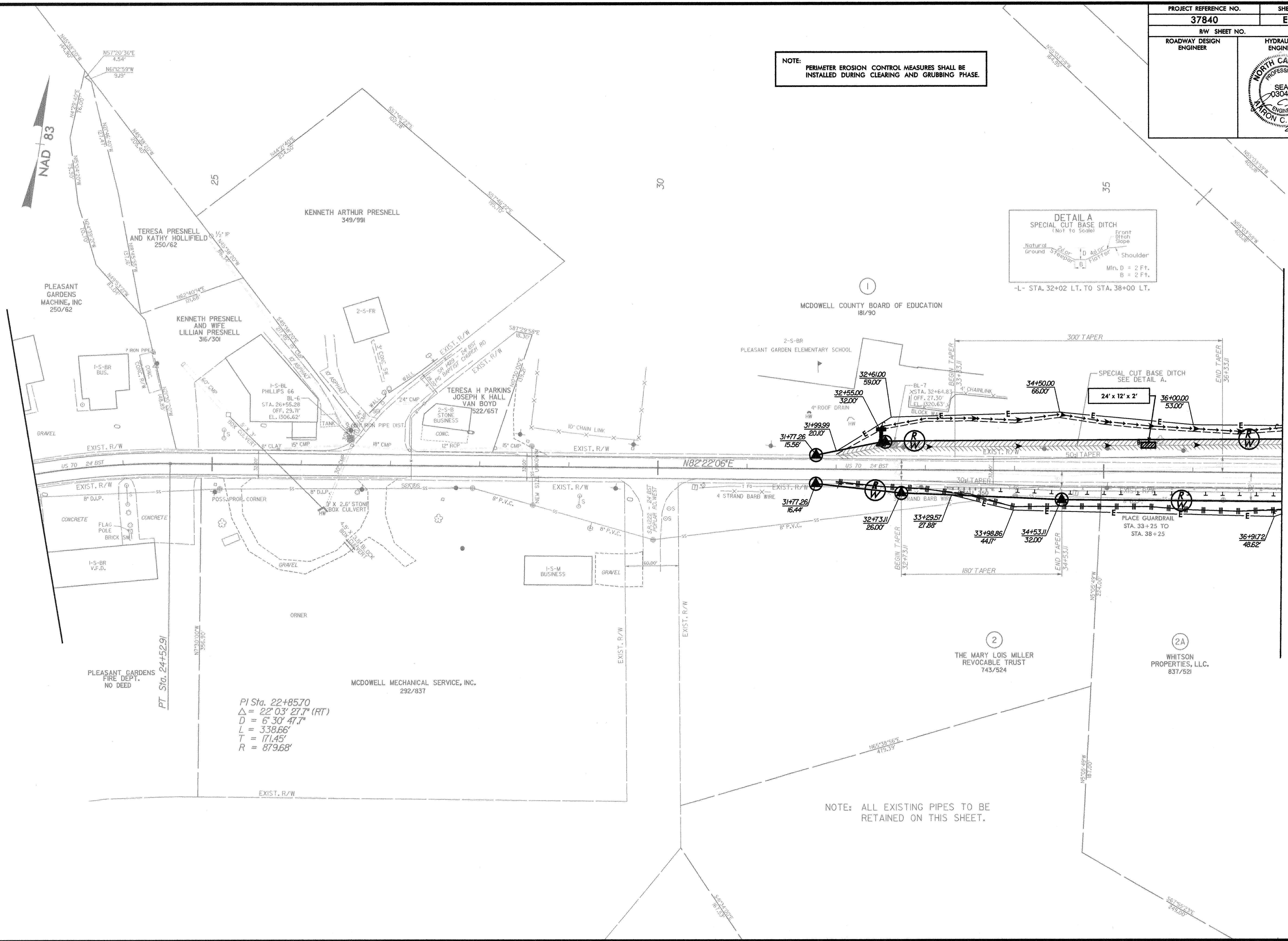
PROJECT REFERENCE NO.		SHEET NO.	
37840		EC-2	
RW SHEET NO.			
ROADWAY DESIGN ENGINEER		HYDRAULICS ENGINEER	

NOTE: PERIMETER EROSION CONTROL MEASURES SHALL BE INSTALLED DURING CLEARING AND GRUBBING PHASE.



REVISIONS


MATCH LINE -L- STA 37+00 SEE SHEET EC-3



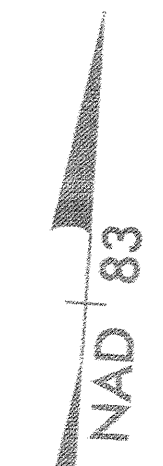
PT Sta. 22+52.91
 PI Sta. 22+85.70
 $\Delta = 22^\circ 03' 27.7''$ (RT)
 $D = 6' 30' 47.7''$
 $L = 338.66'$
 $T = 171.45'$
 $R = 879.68'$

NOTE: ALL EXISTING PIPES TO BE RETAINED ON THIS SHEET.

8/17/99

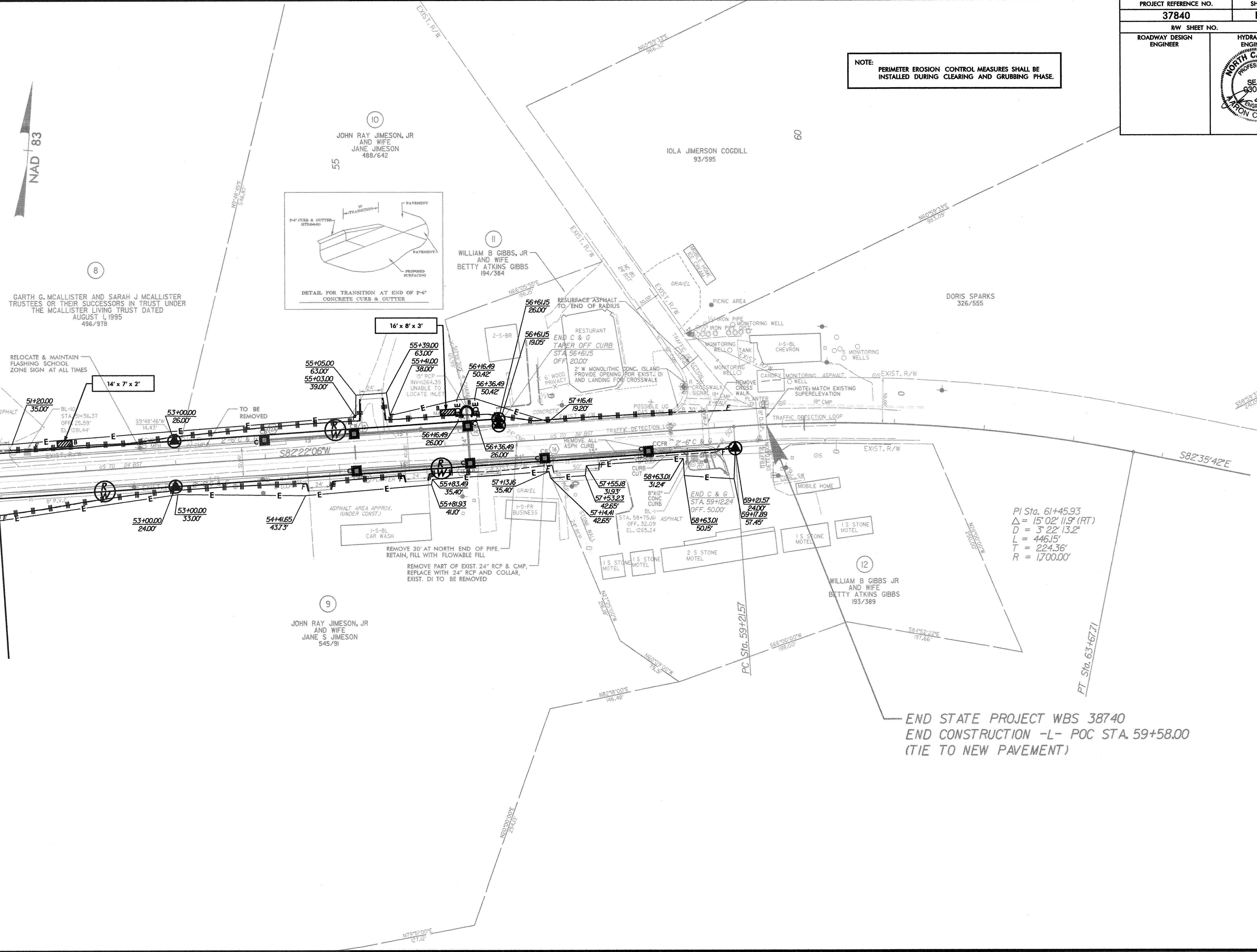
PROJECT REFERENCE NO.	SHEET NO.
37840	EC-4
RW SHEET NO.	
ROADWAY DESIGN ENGINEER	HYDRAULICS ENGINEER
	

NOTE: PERIMETER EROSION CONTROL MEASURES SHALL BE INSTALLED DURING CLEARING AND GRUBBING PHASE.



MATCH LINE -L- STA 51+00 SEE SHEET EC-3

REVISIONS



$PI \text{ Sta. } 61+45.93$
 $\Delta = 15^\circ 02' 11.9'' \text{ (RT)}$
 $D = 3^\circ 22' 13.2''$
 $L = 446.15'$
 $T = 224.36'$
 $R = 1,700.00'$

END STATE PROJECT WBS 38740
 END CONSTRUCTION -L- POC STA. 59+58.00
 (TIE TO NEW PAVEMENT)

10' 12' 15' 18' 21' 24' 27' 30' 33' 36' 39' 42' 45' 48' 51' 54' 57' 60' 63' 66' 69' 72' 75' 78' 81' 84' 87' 90' 93' 96' 99' 102' 105' 108' 111' 114' 117' 120' 123' 126' 129' 132' 135' 138' 141' 144' 147' 150' 153' 156' 159' 162' 165' 168' 171' 174' 177' 180' 183' 186' 189' 192' 195' 198' 201' 204' 207' 210' 213' 216' 219' 222' 225' 228' 231' 234' 237' 240' 243' 246' 249' 252' 255' 258' 261' 264' 267' 270' 273' 276' 279' 282' 285' 288' 291' 294' 297' 300' 303' 306' 309' 312' 315' 318' 321' 324' 327' 330' 333' 336' 339' 342' 345' 348' 351' 354' 357' 360' 363' 366' 369' 372' 375' 378' 381' 384' 387' 390' 393' 396' 399' 402' 405' 408' 411' 414' 417' 420' 423' 426' 429' 432' 435' 438' 441' 444' 447' 450' 453' 456' 459' 462' 465' 468' 471' 474' 477' 480' 483' 486' 489' 492' 495' 498' 501' 504' 507' 510' 513' 516' 519' 522' 525' 528' 531' 534' 537' 540' 543' 546' 549' 552' 555' 558' 561' 564' 567' 570' 573' 576' 579' 582' 585' 588' 591' 594' 597' 600' 603' 606' 609' 612' 615' 618' 621' 624' 627' 630' 633' 636' 639' 642' 645' 648' 651' 654' 657' 660' 663' 666' 669' 672' 675' 678' 681' 684' 687' 690' 693' 696' 699' 702' 705' 708' 711' 714' 717' 720' 723' 726' 729' 732' 735' 738' 741' 744' 747' 750' 753' 756' 759' 762' 765' 768' 771' 774' 777' 780' 783' 786' 789' 792' 795' 798' 801' 804' 807' 810' 813' 816' 819' 822' 825' 828' 831' 834' 837' 840' 843' 846' 849' 852' 855' 858' 861' 864' 867' 870' 873' 876' 879' 882' 885' 888' 891' 894' 897' 900' 903' 906' 909' 912' 915' 918' 921' 924' 927' 930' 933' 936' 939' 942' 945' 948' 951' 954' 957' 960' 963' 966' 969' 972' 975' 978' 981' 984' 987' 990' 993' 996' 999' 1002' 1005' 1008' 1011' 1014' 1017' 1020' 1023' 1026' 1029' 1032' 1035' 1038' 1041' 1044' 1047' 1050' 1053' 1056' 1059' 1062' 1065' 1068' 1071' 1074' 1077' 1080' 1083' 1086' 1089' 1092' 1095' 1098' 1101' 1104' 1107' 1110' 1113' 1116' 1119' 1122' 1125' 1128' 1131' 1134' 1137' 1140' 1143' 1146' 1149' 1152' 1155' 1158' 1161' 1164' 1167' 1170' 1173' 1176' 1179' 1182' 1185' 1188' 1191' 1194' 1197' 1200' 1203' 1206' 1209' 1212' 1215' 1218' 1221' 1224' 1227' 1230' 1233' 1236' 1239' 1242' 1245' 1248' 1251' 1254' 1257' 1260' 1263' 1266' 1269' 1272' 1275' 1278' 1281' 1284' 1287' 1290' 1293' 1296' 1299' 1302' 1305' 1308' 1311' 1314' 1317' 1320' 1323' 1326' 1329' 1332' 1335' 1338' 1341' 1344' 1347' 1350' 1353' 1356' 1359' 1362' 1365' 1368' 1371' 1374' 1377' 1380' 1383' 1386' 1389' 1392' 1395' 1398' 1401' 1404' 1407' 1410' 1413' 1416' 1419' 1422' 1425' 1428' 1431' 1434' 1437' 1440' 1443' 1446' 1449' 1452' 1455' 1458' 1461' 1464' 1467' 1470' 1473' 1476' 1479' 1482' 1485' 1488' 1491' 1494' 1497' 1500' 1503' 1506' 1509' 1512' 1515' 1518' 1521' 1524' 1527' 1530' 1533' 1536' 1539' 1542' 1545' 1548' 1551' 1554' 1557' 1560' 1563' 1566' 1569' 1572' 1575' 1578' 1581' 1584' 1587' 1590' 1593' 1596' 1599' 1602' 1605' 1608' 1611' 1614' 1617' 1620' 1623' 1626' 1629' 1632' 1635' 1638' 1641' 1644' 1647' 1650' 1653' 1656' 1659' 1662' 1665' 1668' 1671' 1674' 1677' 1680' 1683' 1686' 1689' 1692' 1695' 1698' 1701' 1704' 1707' 1710' 1713' 1716' 1719' 1722' 1725' 1728' 1731' 1734' 1737' 1740' 1743' 1746' 1749' 1752' 1755' 1758' 1761' 1764' 1767' 1770' 1773' 1776' 1779' 1782' 1785' 1788' 1791' 1794' 1797' 1800' 1803' 1806' 1809' 1812' 1815' 1818' 1821' 1824' 1827' 1830' 1833' 1836' 1839' 1842' 1845' 1848' 1851' 1854' 1857' 1860' 1863' 1866' 1869' 1872' 1875' 1878' 1881' 1884' 1887' 1890' 1893' 1896' 1899' 1902' 1905' 1908' 1911' 1914' 1917' 1920' 1923' 1926' 1929' 1932' 1935' 1938' 1941' 1944' 1947' 1950' 1953' 1956' 1959' 1962' 1965' 1968' 1971' 1974' 1977' 1980' 1983' 1986' 1989' 1992' 1995' 1998' 2001' 2004' 2007' 2010' 2013' 2016' 2019' 2022' 2025' 2028' 2031' 2034' 2037' 2040' 2043' 2046' 2049' 2052' 2055' 2058' 2061' 2064' 2067' 2070' 2073' 2076' 2079' 2082' 2085' 2088' 2091' 2094' 2097' 2100' 2103' 2106' 2109' 2112' 2115' 2118' 2121' 2124' 2127' 2130' 2133' 2136' 2139' 2142' 2145' 2148' 2151' 2154' 2157' 2160' 2163' 2166' 2169' 2172' 2175' 2178' 2181' 2184' 2187' 2190' 2193' 2196' 2199' 2202' 2205' 2208' 2211' 2214' 2217' 2220' 2223' 2226' 2229' 2232' 2235' 2238' 2241' 2244' 2247' 2250' 2253' 2256' 2259' 2262' 2265' 2268' 2271' 2274' 2277' 2280' 2283' 2286' 2289' 2292' 2295' 2298' 2301' 2304' 2307' 2310' 2313' 2316' 2319' 2322' 2325' 2328' 2331' 2334' 2337' 2340' 2343' 2346' 2349' 2352' 2355' 2358' 2361' 2364' 2367' 2370' 2373' 2376' 2379' 2382' 2385' 2388' 2391' 2394' 2397' 2400' 2403' 2406' 2409' 2412' 2415' 2418' 2421' 2424' 2427' 2430' 2433' 2436' 2439' 2442' 2445' 2448' 2451' 2454' 2457' 2460' 2463' 2466' 2469' 2472' 2475' 2478' 2481' 2484' 2487' 2490' 2493' 2496' 2499' 2502' 2505' 2508' 2511' 2514' 2517' 2520' 2523' 2526' 2529' 2532' 2535' 2538' 2541' 2544' 2547' 2550' 2553' 2556' 2559' 2562' 2565' 2568' 2571' 2574' 2577' 2580' 2583' 2586' 2589' 2592' 2595' 2598' 2601' 2604' 2607' 2610' 2613' 2616' 2619' 2622' 2625' 2628' 2631' 2634' 2637' 2640' 2643' 2646' 2649' 2652' 2655' 2658' 2661' 2664' 2667' 2670' 2673' 2676' 2679' 2682' 2685' 2688' 2691' 2694' 2697' 2700' 2703' 2706' 2709' 2712' 2715' 2718' 2721' 2724' 2727' 2730' 2733' 2736' 2739' 2742' 2745' 2748' 2751' 2754' 2757' 2760' 2763' 2766' 2769' 2772' 2775' 2778' 2781' 2784' 2787' 2790' 2793' 2796' 2799' 2802' 2805' 2808' 2811' 2814' 2817' 2820' 2823' 2826' 2829' 2832' 2835' 2838' 2841' 2844' 2847' 2850' 2853' 2856' 2859' 2862' 2865' 2868' 2871' 2874' 2877' 2880' 2883' 2886' 2889' 2892' 2895' 2898' 2901' 2904' 2907' 2910' 2913' 2916' 2919' 2922' 2925' 2928' 2931' 2934' 2937' 2940' 2943' 2946' 2949' 2952' 2955' 2958' 2961' 2964' 2967' 2970' 2973' 2976' 2979' 2982' 2985' 2988' 2991' 2994' 2997' 3000' 3003' 3006' 3009' 3012' 3015' 3018' 3021' 3024' 3027' 3030' 3033' 3036' 3039' 3042' 3045' 3048' 3051' 3054' 3057' 3060' 3063' 3066' 3069' 3072' 3075' 3078' 3081' 3084' 3087' 3090' 3093' 3096' 3099' 3102' 3105' 3108' 3111' 3114' 3117' 3120' 3123' 3126' 3129' 3132' 3135' 3138' 3141' 3144' 3147' 3150' 3153' 3156' 3159' 3162' 3165' 3168' 3171' 3174' 3177' 3180' 3183' 3186' 3189' 3192' 3195' 3198' 3201' 3204' 3207' 3210' 3213' 3216' 3219' 3222' 3225' 3228' 3231' 3234' 3237' 3240' 3243' 3246' 3249' 3252' 3255' 3258' 3261' 3264' 3267' 3270' 3273' 3276' 3279' 3282' 3285' 3288' 3291' 3294' 3297' 3300' 3303' 3306' 3309' 3312' 3315' 3318' 3321' 3324' 3327' 3330' 3333' 3336' 3339' 3342' 3345' 3348' 3351' 3354' 3357' 3360' 3363' 3366' 3369' 3372' 3375' 3378' 3381' 3384' 3387' 3390' 3393' 3396' 3399' 3402' 3405' 3408' 3411' 3414' 3417' 3420' 3423' 3426' 3429' 3432' 3435' 3438' 3441' 3444' 3447' 3450' 3453' 3456' 3459' 3462' 3465' 3468' 3471' 3474' 3477' 3480' 3483' 3486' 3489' 3492' 3495' 3498' 3501' 3504' 3507' 3510' 3513' 3516' 3519' 3522' 3525' 3528' 3531' 3534' 3537' 3540' 3543' 3546' 3549' 3552' 3555' 3558' 3561' 3564' 3567' 3570' 3573' 3576' 3579' 3582' 3585' 3588' 3591' 3594' 3597' 3600' 3603' 3606' 3609' 3612' 3615' 3618' 3621' 3624' 3627' 3630' 3633' 3636' 3639' 3642' 3645' 3648' 3651' 3654' 3657' 3660' 3663' 3666' 3669' 3672' 3675' 3678' 3681' 3684' 3687' 3690' 3693' 3696' 3699' 3702' 3705' 3708' 3711' 3714' 3717' 3720' 3723' 3726' 3729' 3732' 3735' 3738' 3741' 3744' 3747' 3750' 3753' 3756' 3759' 3762' 3765' 3768' 3771' 3774' 3777' 3780' 3783' 3786' 3789' 3792' 3795' 3798' 3801' 3804' 3807' 3810' 3813' 3816' 3819' 3822' 3825' 3828' 3831' 3834' 3837' 3840' 3843' 3846' 3849' 3852' 3855' 3858' 3861' 3864' 3867' 3870' 3873' 3876' 3879' 3882' 3885' 3888' 3891' 3894' 3897' 3900' 3903' 3906' 3909' 3912' 3915' 3918' 3921' 3924' 3927' 3930' 3933' 3936' 3939' 3942' 3945' 3948' 3951' 3954' 3957' 3960' 3963' 3966' 3969' 3972' 3975' 3978' 3981' 3984' 3987' 3990' 3993' 3996' 3999' 4002' 4005' 4008' 4011' 4014' 4017' 4020' 4023' 4026' 4029' 4032' 4035' 4038' 4041' 4044' 4047' 4050' 4053' 4056' 4059' 4062' 4065' 4068' 4071' 4074' 4077' 4080' 4083' 4086' 4089' 4092' 4095' 4098' 4101' 4104' 4107' 4110' 4113' 4116' 4119' 4122' 4125' 4128' 4131' 4134' 4137' 4140' 4143' 4146' 4149' 4152' 4155' 4158' 4161' 4164' 4167' 4170' 4173' 4176' 4179' 4182' 4185' 4188' 4191' 4194' 4197' 4200' 4203' 4206' 4209' 4212' 4215' 4218' 4221' 4224' 4227' 4230' 4233' 4236' 4239' 4242' 4245' 4248' 4251' 4254' 4257' 4260' 4263' 4266' 4269' 4272' 4275' 4278' 4281' 4284' 4287' 4290' 4293' 4296' 4299' 4302' 4305' 4308' 4311' 4314' 4317' 4320' 4323' 4326' 4329' 4332' 4335' 4338' 4341' 4344' 4347' 4350' 4353' 4356' 4359' 4362' 4365' 4368' 4371' 4374' 4377' 4380' 4383' 4386' 4389' 4392' 4395' 4398' 4401' 4404' 4407' 4410' 4413' 4416' 4419' 4422' 4425' 4428' 4431' 4434' 4437' 4440' 4443' 4446' 4449' 4452' 4455' 4458' 4461' 4464' 4467' 4470' 4473' 4476' 4479' 4482' 4485' 4488' 4491' 4494' 4497' 4500' 4503' 4506' 4509' 4512' 4515' 4518' 4521' 4524' 4527' 4530' 4533' 4536' 4539' 4542' 4545' 4548' 4551' 4554' 4557' 4560' 4563' 4566' 4569' 4572' 4575' 4578' 4581' 4584' 4587' 4590' 4593' 4596' 4599' 4602' 4605' 4608' 4611' 4614' 4617' 4620' 4623' 4626' 4629' 4632' 4635' 4638' 4641' 4644' 4647' 4650' 4653' 4656' 4659' 4662' 4665' 4668' 4671' 4674' 4677' 4680' 4683' 4686' 4689' 4692' 4695' 4698' 4701' 4704' 4707' 4710' 4713' 4716' 4719' 4722' 4725' 4728' 4731' 4734' 4737' 4740' 4743' 4746' 4749' 4752' 4755' 4758' 4761' 4764' 4767' 4770' 4773' 4776' 4779' 4782' 4785' 4788' 4791' 4794' 4797' 4800' 4803' 4806' 4809' 4812' 4815' 4818' 4821' 4824' 4827' 4830' 4833' 4836' 4839' 4842' 4845' 4848' 4851' 4854' 4857' 4860' 4863' 4866' 4869' 4872' 4875' 4878' 4881' 4884' 4887' 4890' 4893' 4896' 4899' 4902' 4905' 4908' 4911' 4914' 4917' 4920' 4923' 4926' 4929' 4932' 4935' 4938' 4941' 4944' 4947' 4950' 4953' 4956' 4959' 4962' 4965' 4968' 4971' 4974' 4977' 4980' 4983' 4986' 4989' 4992' 4995' 4998' 5001' 5004' 5007' 5010' 5013' 5016' 5019' 5022' 5025' 5028' 5031' 5034' 5037' 5040' 5043' 5046' 5049' 5052' 5055' 5058' 5061' 5064' 5067' 5070' 5073' 5076' 5079' 5082' 5085' 5088' 5091' 5094' 5097' 5100' 5103' 5106' 5109' 5112' 5115' 5118' 5121' 5124' 5127' 5130' 5133' 5136' 5139' 5142' 5145' 5148' 5151' 5154' 5157' 5160' 5163' 5166' 5169' 5172' 5175' 5178' 5181' 5184' 5187' 5190' 5193' 5196' 5199' 5202' 5205' 5208' 5211' 5214' 5217' 5220' 5223' 5226' 5229' 5232' 5235' 5238' 5241' 5244' 5247' 5250' 5253' 5256' 5259' 5262' 5265' 5268' 5271' 5274' 5277' 5280' 5283' 5286' 5289' 5292' 5295' 5298' 5301' 5304' 5307' 5310' 5313' 5316' 5319' 5322' 5325' 5328' 5331' 5334' 5337' 5340' 5343' 5346' 5349' 5352' 5355' 5358' 5361' 5364' 5367' 5370' 5373' 5376' 5379' 5382' 5385' 5388' 5391' 5394' 5397' 5400' 5403' 5406' 5409' 5412' 5415' 5418' 5421' 5424' 5427' 5430' 5433' 5436' 5439' 5442' 5445' 5448' 5451' 5454' 5457' 5460' 5463' 5466' 5469' 5472' 5475' 5478' 5481' 5484' 5487' 5490' 5493' 5496' 5499' 5502' 5505' 5508' 5511' 5514' 5517' 5520' 5523' 5526' 5529' 5532' 5535' 5538' 5541' 5544' 5547' 5550' 5553' 5556' 5559' 5562' 5565' 5568' 5571' 5574' 5577' 5580' 5583' 5586' 5589' 5592' 5595' 5598' 5601' 5604' 5607' 5610' 5613' 5616' 5619' 5622' 5625' 5628' 5631' 5634' 5637' 5640' 5643' 5646' 5649' 5652' 5655' 5658' 5661' 5664' 5667' 5670' 5673' 5676' 5679' 5682' 5685' 5688' 5691' 5694' 5697' 5700' 5703' 5706' 5709' 5712' 5715' 5718' 5721' 5724' 5727' 5730' 5733' 5736' 5739' 5742' 5745' 5748' 5751' 5754' 5757' 5760' 5763' 5766' 5769' 5772' 5775' 5778' 5781' 5784' 5787' 5790' 5793' 5796' 5799' 5802' 5805' 5808' 5811' 5814' 5817' 5820' 5823' 5826' 5829' 5832' 5835' 5838' 5841' 5844' 5847' 5850' 5853' 5856' 5859' 5862' 5865' 5868' 5871' 5874' 5877' 5880' 5883' 5886' 5889' 5892'