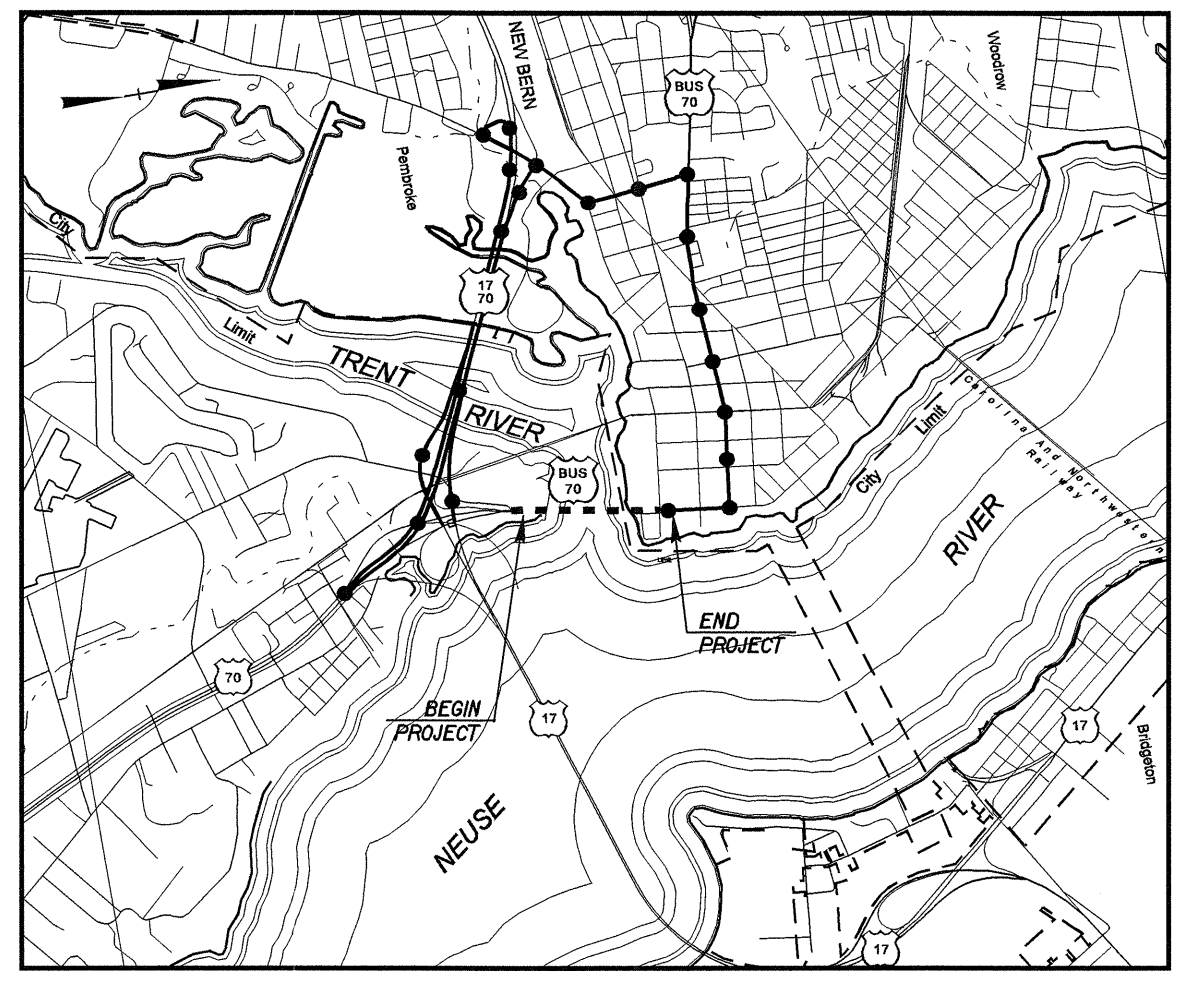


STATE OF NORTH CAROLINA
DIVISION OF HIGHWAYS

**UTILITY CONSTRUCTION PLANS
CRAVEN COUNTY**

LOCATION: ALFRED CUNNINGHAM BRIDGE REPLACEMENT

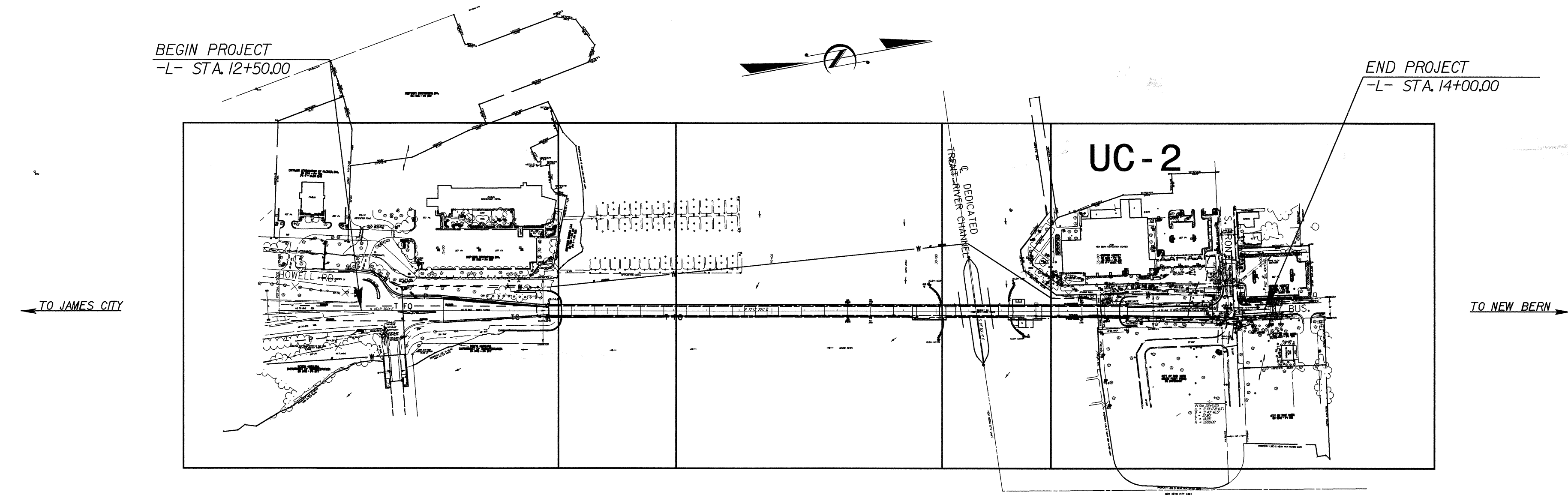
TYPE OF WORK: WATER AND SEWER



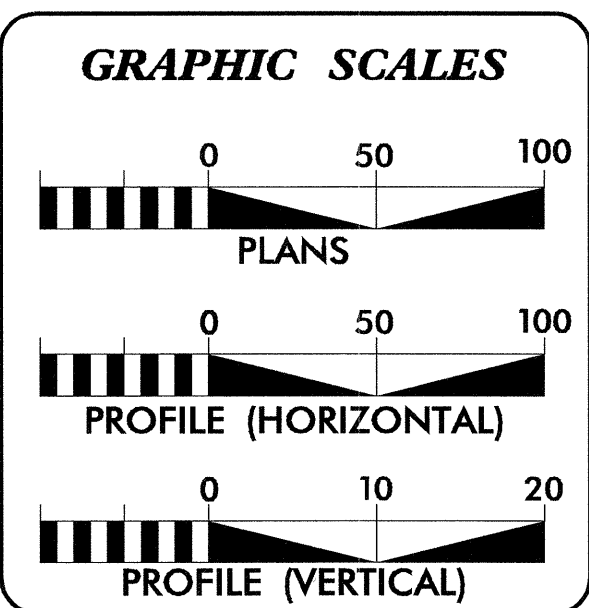
VICINITY MAP

TIP PROJECT: B-2532

CONTRACT: C201581



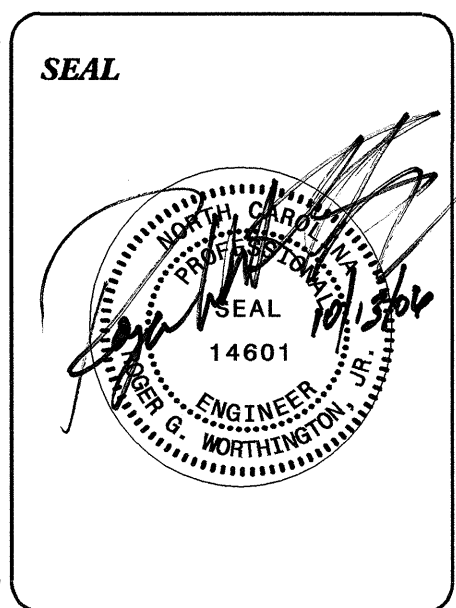
2006 STANDARD SPECIFICATION FOR ROADS AND STRUCTURES
4" PVC SEWER PIPE, SDR 35
1-1/2" PVC WATER LINE, SDR 21 ATTACHED TO THE BRIDGE
1-1/2" PE TUBING, SDR 9, 200# WP UNDER THE ROADWAY



INDEX OF SHEETS	
SHEET NO.	DESCRIPTION
UC-1	TITLE SHEET
UC-2	UTILITY CONSTRUCTION PLAN SHEETS
UC-3	PROFILE SHEET
UC-4 THRU UC-7	UTILITY CONSTRUCTION PLAN SHEETS (BRIDGE ATTACHMENT)
UC-8	DETAILS SHEET

WATER AND SEWER OWNERS ON PROJECT

(1) WATER CITY OF NEW BERN
(2) SANITARY SEWER CITY OF NEW BERN



PREPARED IN THE OFFICE OF:
**DIVISION OF HIGHWAYS
PROJECT SERVICES
UTILITY SECTION**

1591 MAIL SERVICES CENTER
RALEIGH, NC 27699-1591
PHONE (919) 250-4128
FAX (919) 250-4119

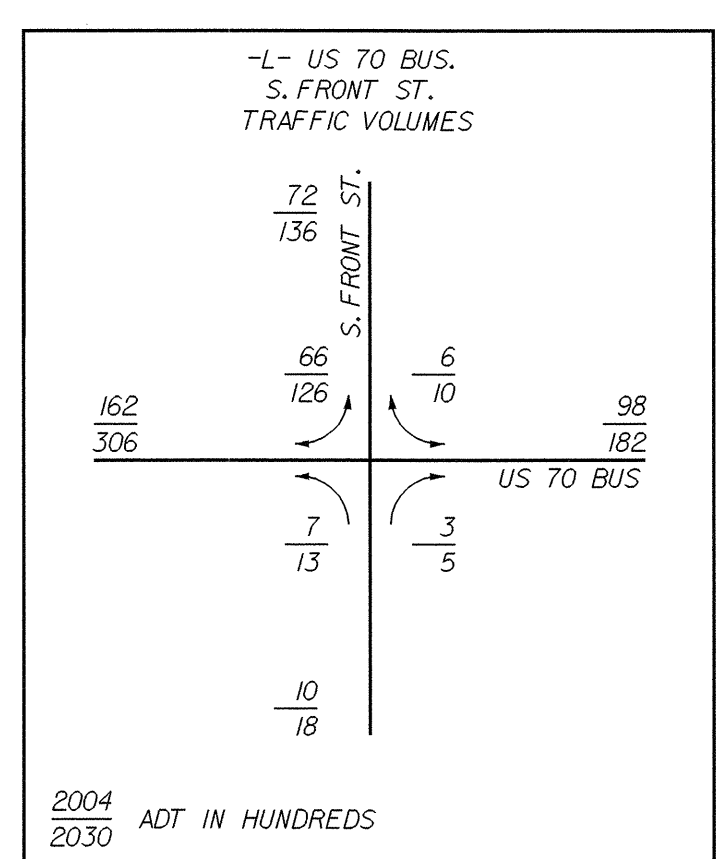
Roger Worthington, P.E. UTILITIES SECTION ENGINEER
Carl Barclay, P.E. UTILITIES SQUAD LEADER PROJECT ENGINEER
Ali Kouchehi UTILITIES PROJECT DESIGNER

10-OCT-2006 15:09
R:\Utilities\proj\B2532_rdy_tsh_01.dgn
USER:RWB

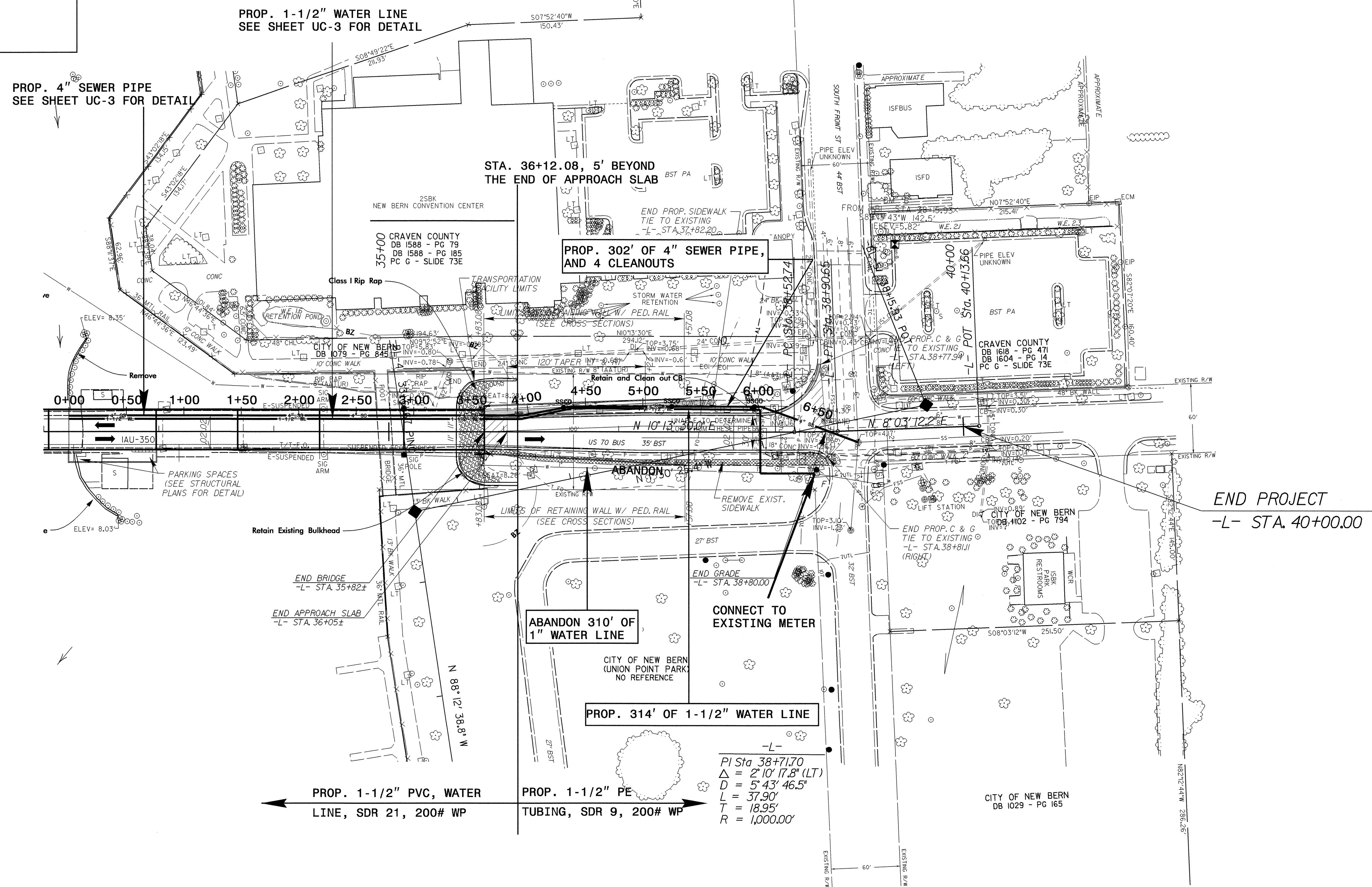
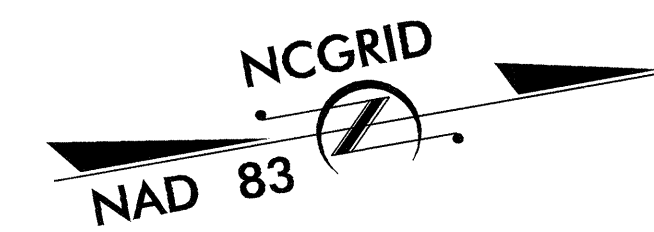
UTILITY CONSTRUCTION

ITEM	STATION	OFFSET
PROP SEWER CLEANOUT	36+13	L -14.00
S 22 1/2 BEND	36+15	L -14.00
PROP SEWER CLEANOUT	36+52	L -21.00
S 22 1/2 BEND	36+58	L -22.00
PROP SEWER CLEANOUT	37+46	L -22.00
PROP SEWER CLEANOUT	38+18	L -22.00
S 22 1/2 BEND	38+24	L -22.00

N Coordinate:	E Coordinate:
498468.07	2587204.14
498469.86	2587204.86
498507.69	2587204.17
498507.69	2587204.17
498600.37	2587219.87
498671.26	2587232.67
498677.17	2587233.72



NOTE: THE CONTRACTOR SHALL PROTECT THE EXISTING FOOTBRIDGE FROM DAMAGE DURING CONSTRUCTION. THE CONTRACTOR MAY REMOVE THE FOOTBRIDGE TEMPORARILY AND REPLACE IN ITS EXISTING LOCATION.



END PROJECT
-L- STA. 40+00.00

-L-
PI Sta. 38+71.70
Δ = 2' 10" (7.8" (LT))
D = 5' 43" 46.5"
L = 37.90'
T = 18.95'
R = 1,000.00'

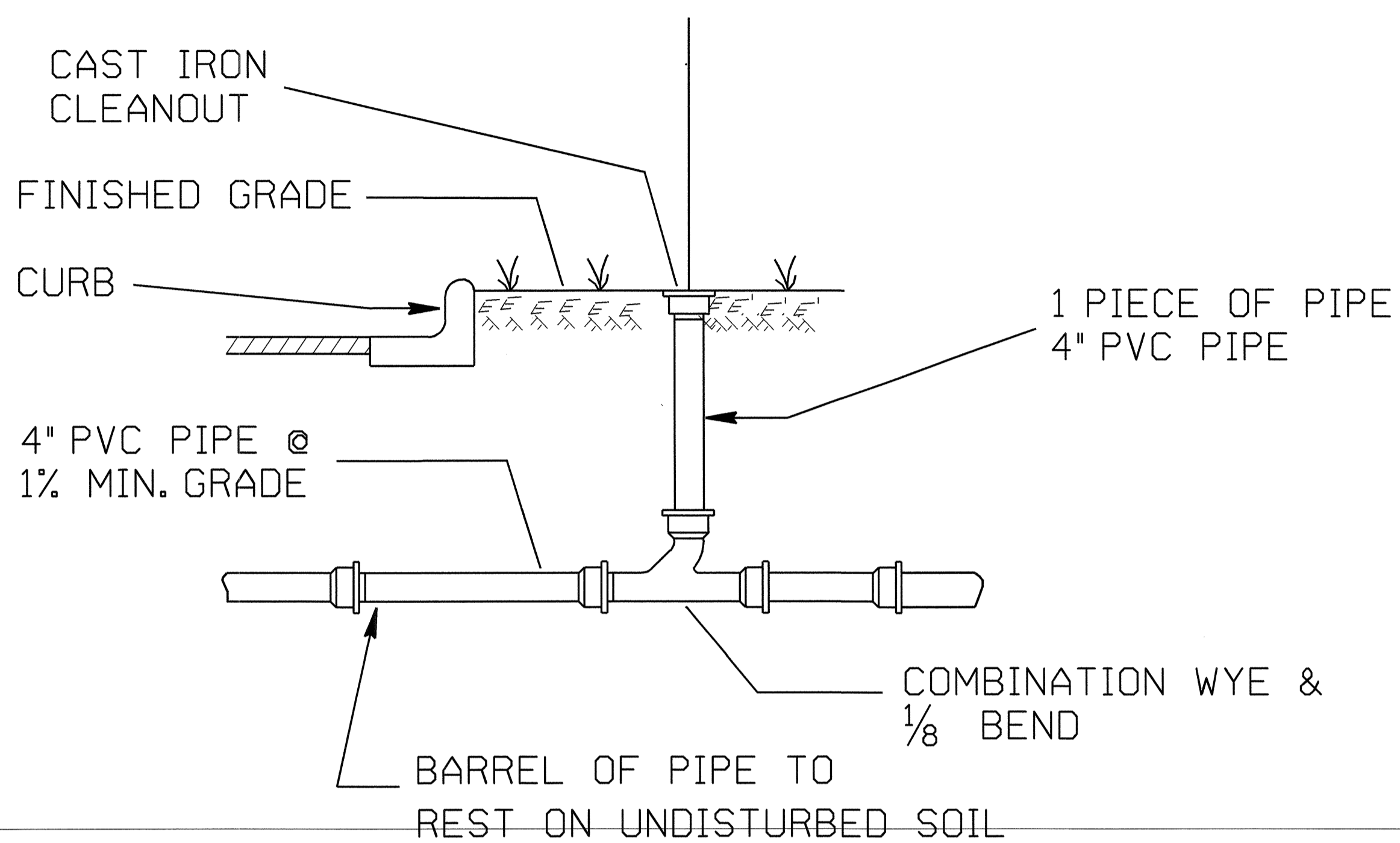
NOTE:
FOR -L- PROFILE, SEE SHEET No. 7.
FOR WALL ENVELOPE, SEE SHEET No. 2-B

5/14/09
20-OCT-2006 09:21
C:\Users\jgarcia\Documents\B2532.PSH-06.UC-2.dgn

8/17/99

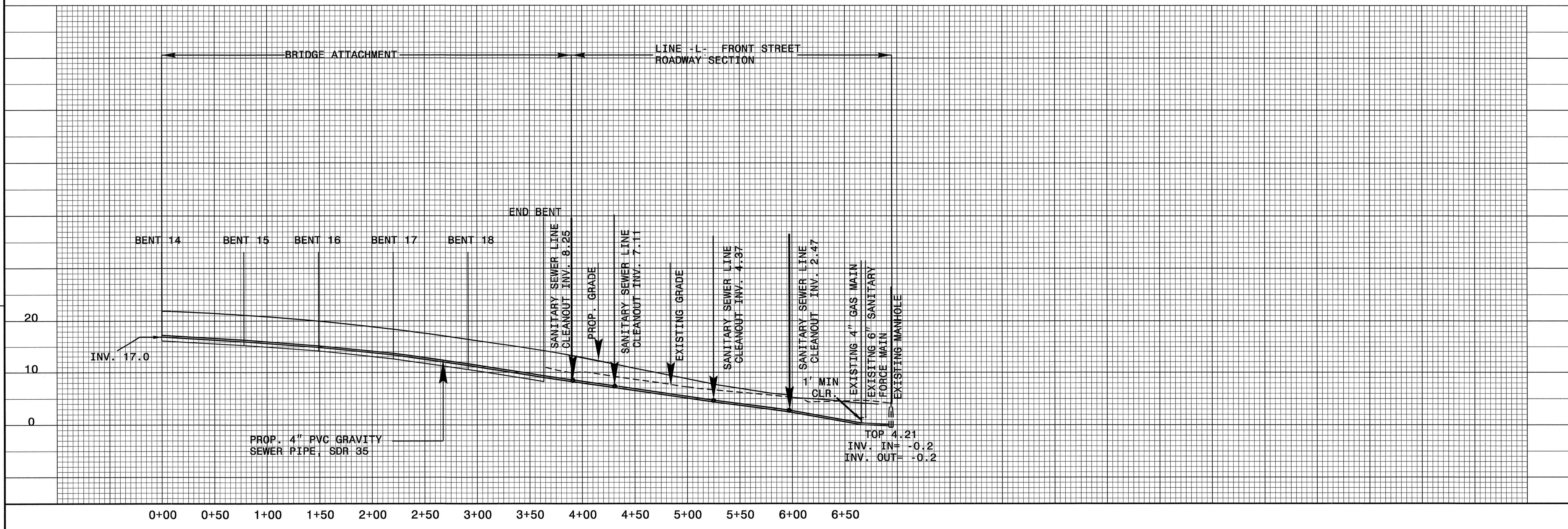
REVISIONS

SANITARY SEWER CLEANOUT



PROJECT REFERENCE NO.	SHEET NO.
B-2532	UC-3
DESIGNED BY: ARK	
DRAWN BY: ARK	
CHECKED BY: RGW	
APPROVED BY: RGW	
REVISED:	
NORTH CAROLINA DEPARTMENT OF TRANSPORTATION	
PROJECT SERVICES UNIT PHONE: (919)250-4128 FAX: (919)250-4119	
UTILITY CONSTRUCTION PLANS ONLY	

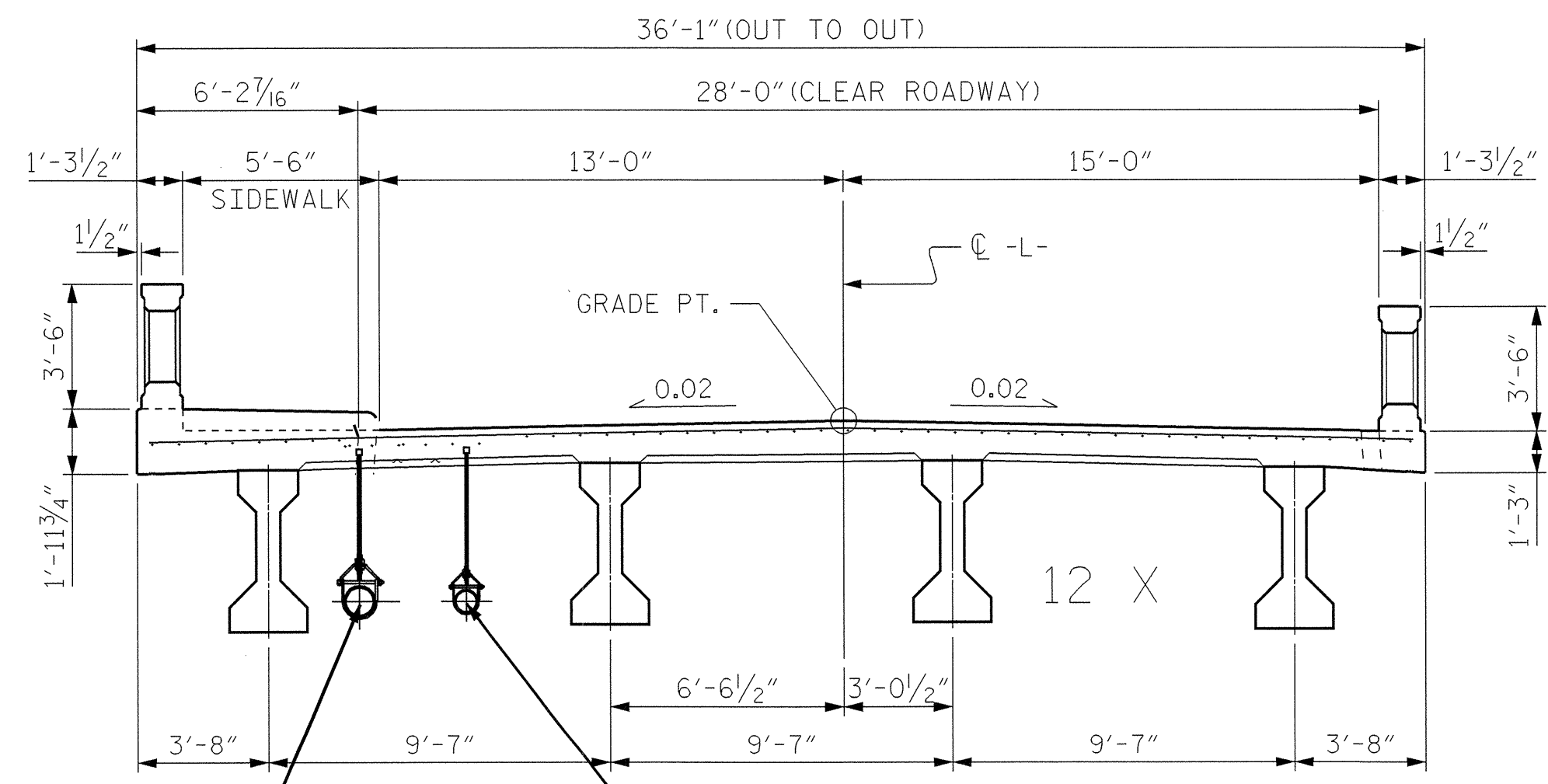
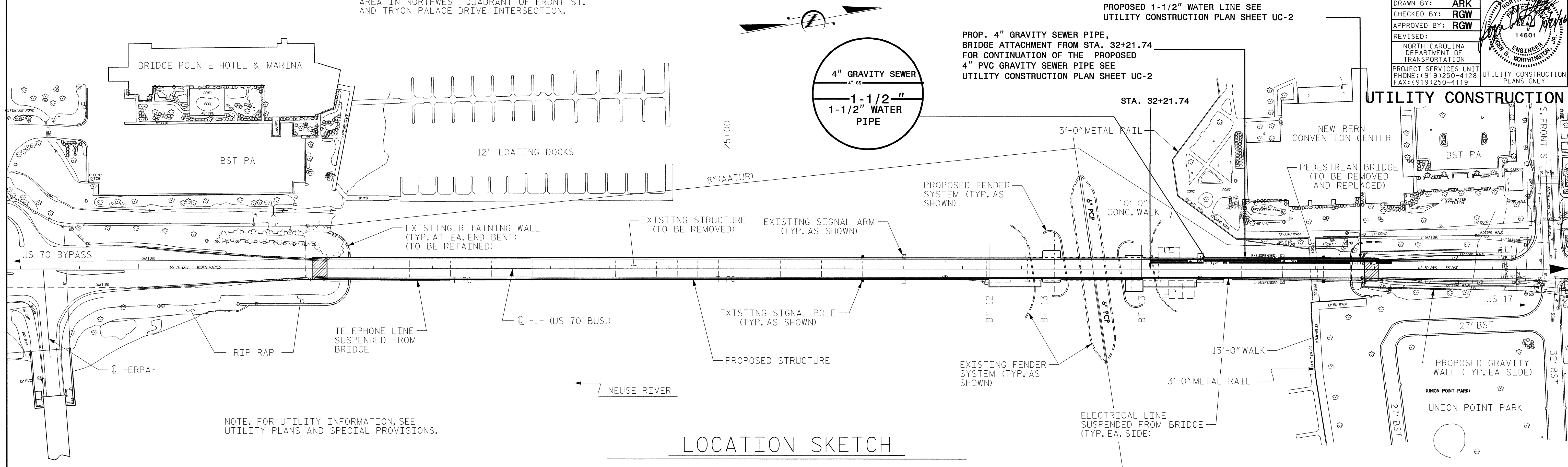
UTILITY CONSTRUCTION



BENCH MARK:
RR SPIKE IN SOUTHWEST CORNER OF PARKING
AREA IN NORTHWEST QUADRANT OF FRONT ST.
AND TRYON PALACE DRIVE INTERSECTION.

PROP. 1-1/2" WATER PIPE,
WATER MAIN BRIDGE ATTACHMENT BEGIN
AT STA. 32+21.74 FOR CONTINUATION OF THE
PROPOSED 1-1/2" WATER LINE SEE
UTILITY CONSTRUCTION PLAN SHEET UC-2

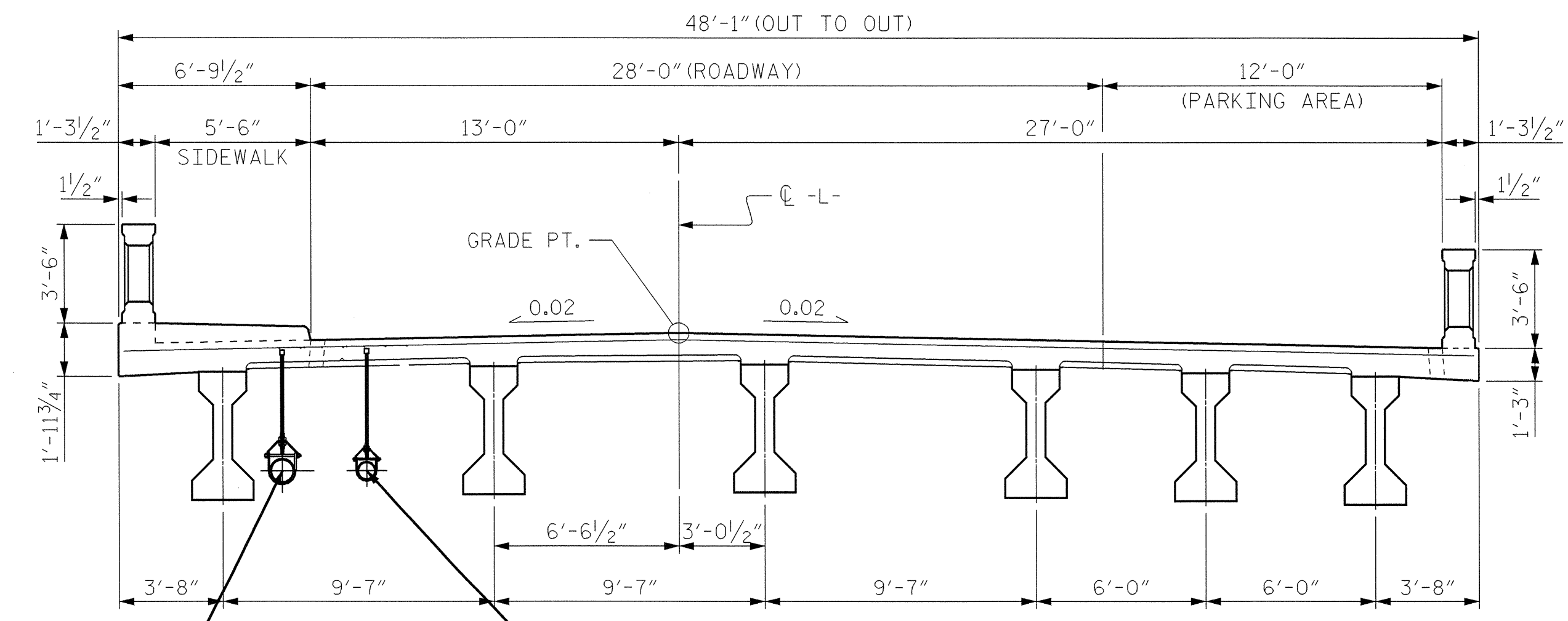
PROJECT REFERENCE NO.	SHEET NO.
B-2532	UC-4
DESIGNED BY: ARK	
DRAWN BY: ARK	
CHECKED BY: RGW	
APPROVED BY: RGW	
REVISED:	
NORTH CAROLINA DEPARTMENT OF TRANSPORTATION	
PROJECT SERVICES UNIT PHONE: (919) 250-4128 FAX: (919) 250-4119	
UTILITY CONSTRUCTION PLANS ONLY	



TYPICAL SECTION
SPANS "P" THRU "S" CONTINUOUS FOR LIVE LOAD
WITH COMPOSITE DECK ON 54" PRESTRESSED CONCRETE GIRDERS

PROPOSED 4" PVC GRAVITY SEWER PIPE, SDR 35
BRIDGE ATTACHMENT.

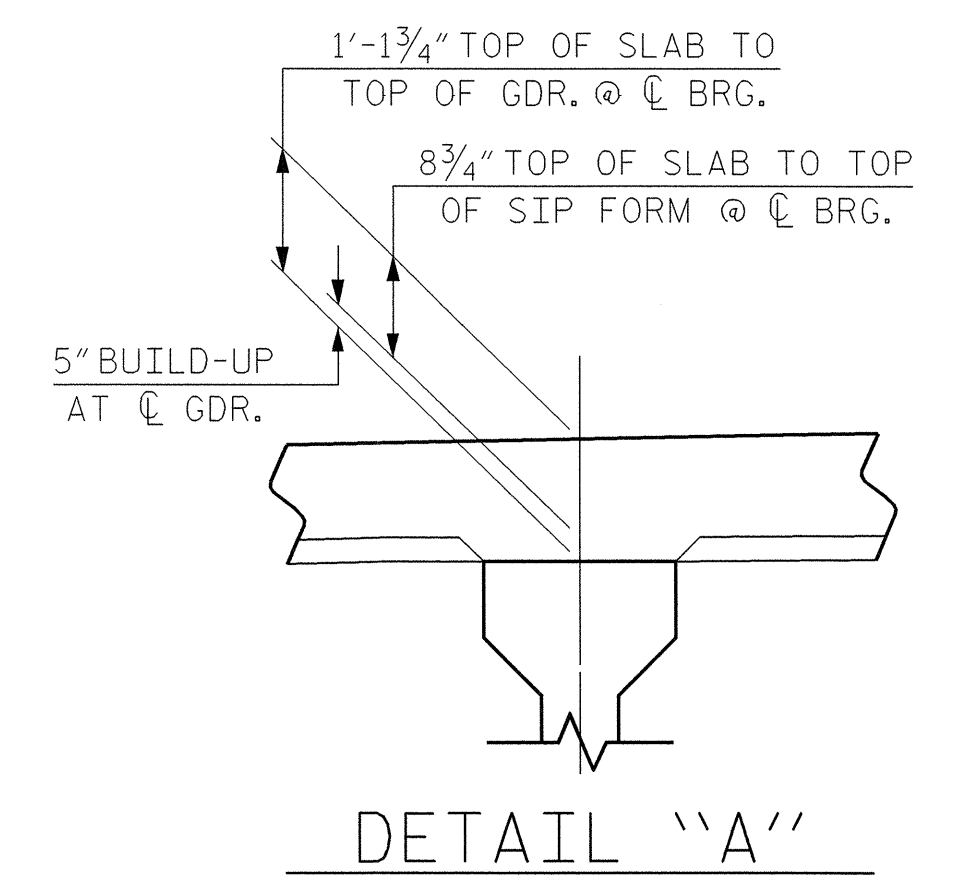
PROPOSED 1-1/2" PVC SDR 21 WATER MAIN
BRIDGE ATTACHMENT.



TYPICAL SECTION
SPAN "M" AND SPAN "O" SIMPLE SPANS WITH COMPOSITE
DECK ON 54" PRESTRESSED CONCRETE GIRDERS

PROPOSED 4" PVC GRAVITY SEWER PIPE, SDR 35
BRIDGE ATTACHMENT.

PROPOSED 1-1/2" PVC SDR 21 WATER MAIN
BRIDGE ATTACHMENT.

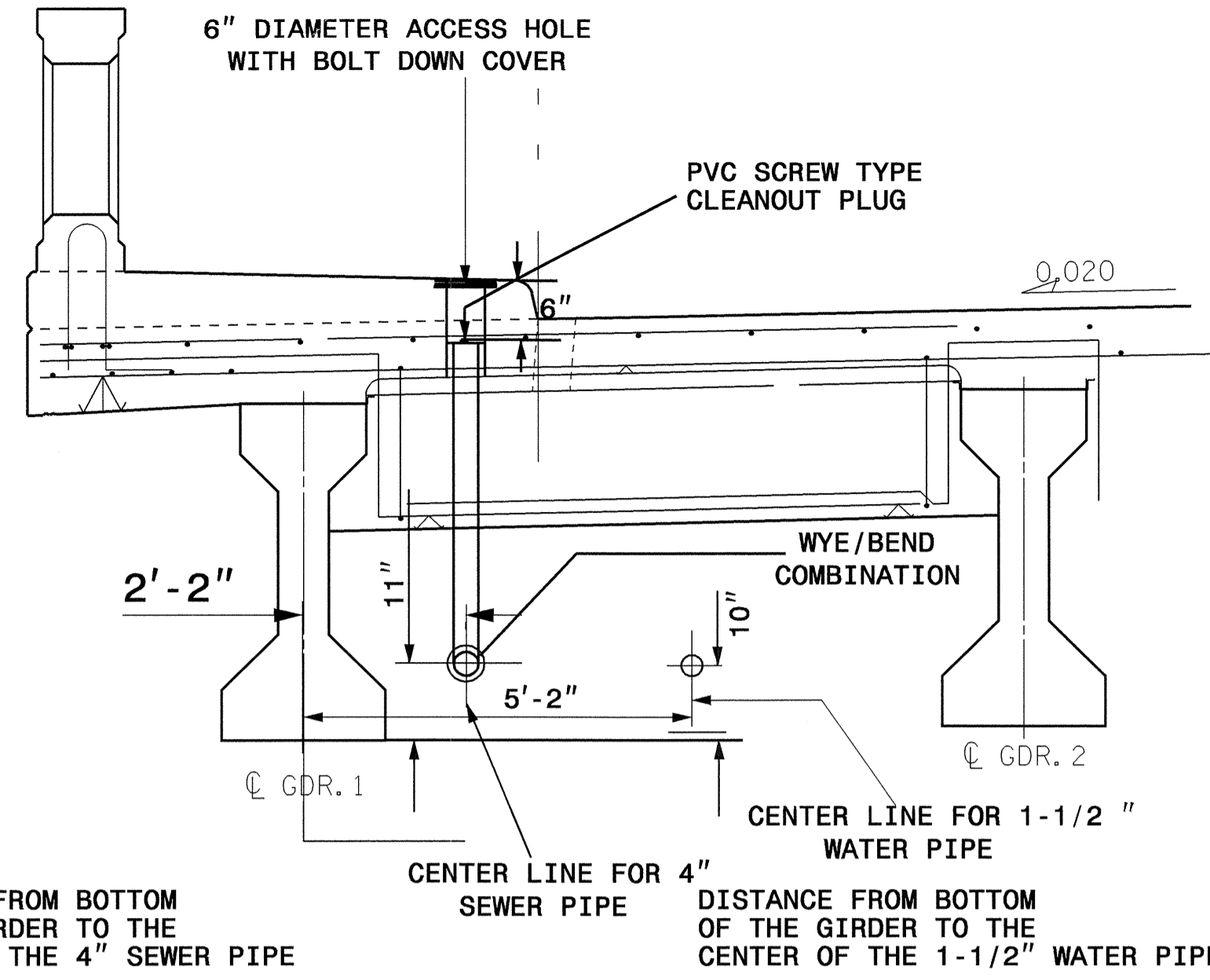


REVISIONS						SHEET NO.
NO.	BY:	DATE:	NO.	BY:	DATE:	TOTAL SHEETS
1			3			
2			4			

PROJECT REFERENCE NO. B-2532	SHEET NO. UC-6
DESIGNED BY: ARK	
DRAWN BY: ARK	
CHECKED BY: RGW	
APPROVED BY: RGW	
REVISED:	
NORTH CAROLINA DEPARTMENT OF TRANSPORTATION	
PROJECT SERVICES UNIT PHONE: (919)250-4128 FAX: (919)250-4119	
UTILITY CONSTRUCTION PLANS ONLY	

THE DIMENSIONS SHOWN ON THE UTILITY CONSTRUCTION PLANS ARE FOR UTILITY ATTACHMENT ONLY, SEE STRUCTURE PLANS FOR DETAILS PERTAINING TO THE STRUCTURE.

UTILITY CONSTRUCTION



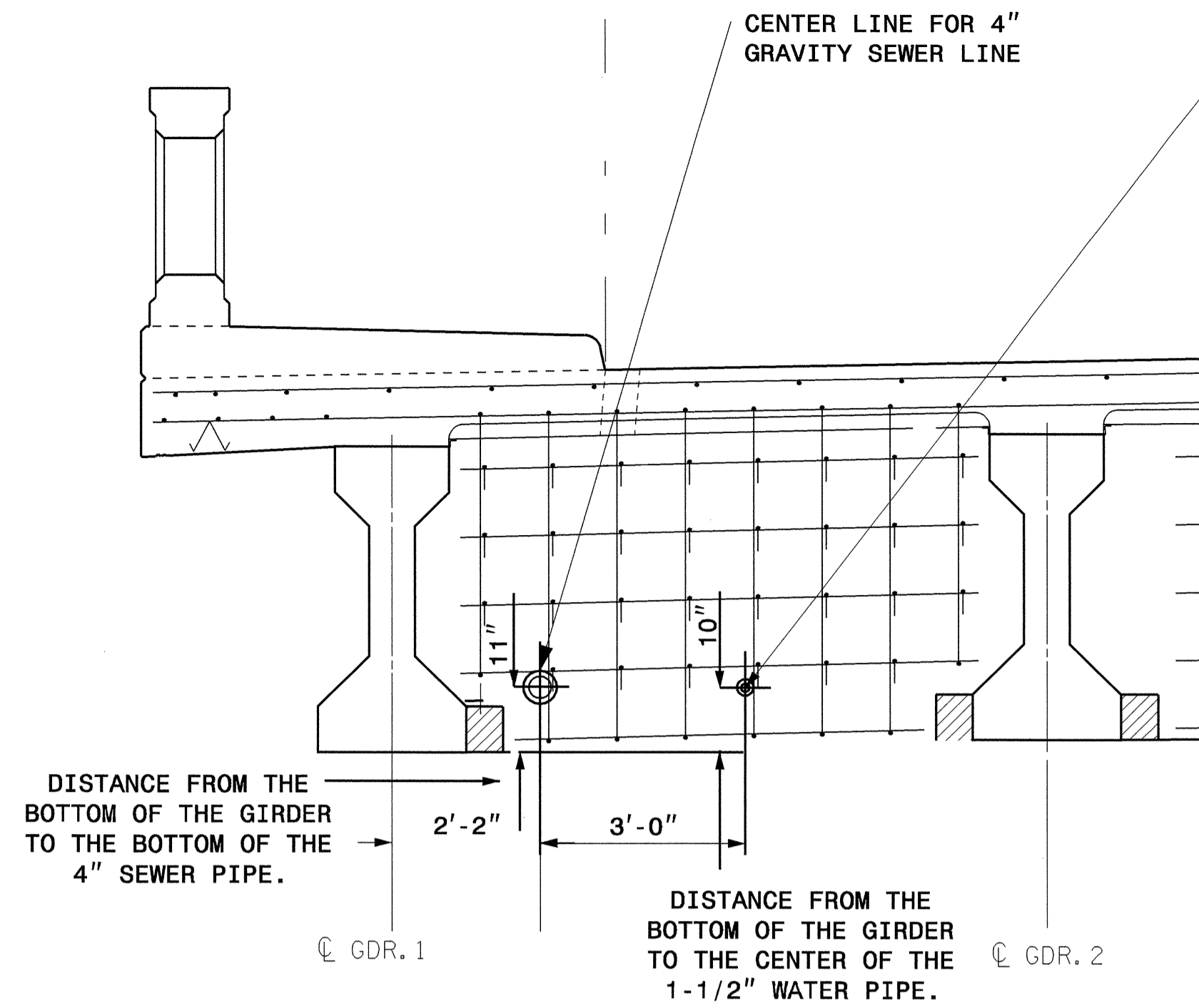
DISTANCE FROM BOTTOM OF THE GIRDER TO THE CENTER OF THE 4" SEWER PIPE

INSTALL HANGER 6" TO 12" FROM CLEANOUT

AT END BENT AND BENT DIAPHRAGMS

TYPICAL SECTION

(FOR "P" THRU "S")

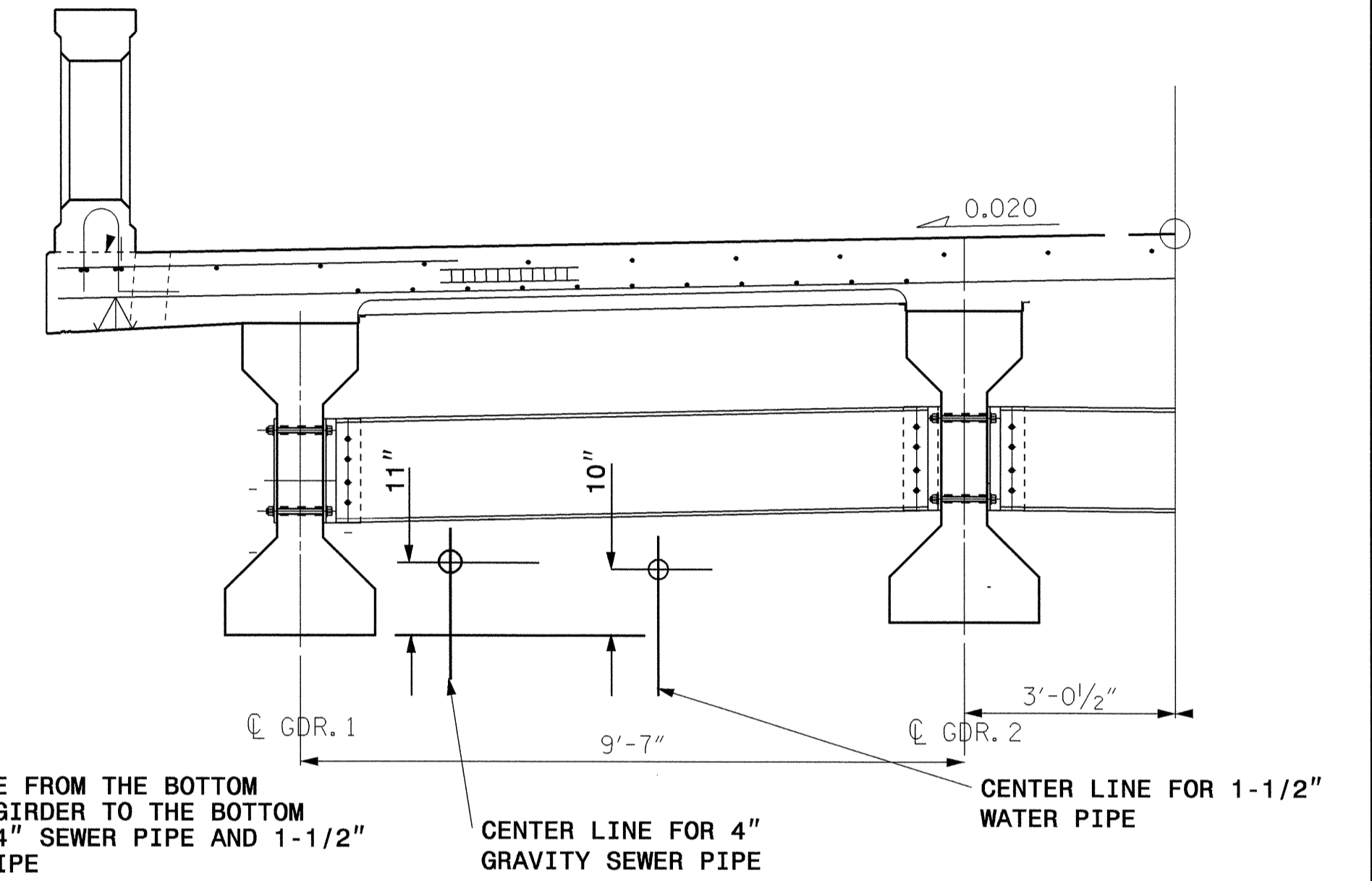


4" SEWER PIPE AND 1-1/2" WATER PIPE. FIELD BEND REINFORCING STEEL AS NECESSARY TO PROVIDE FOR HOLE.

PROVIDE 6" HOLE FOR 4" SEWER
PROVIDE 3" HOLE FOR 1-1/2" WATER

TYPICAL SECTION

AT CONTINUOUS BENT DIAPHRAGMS

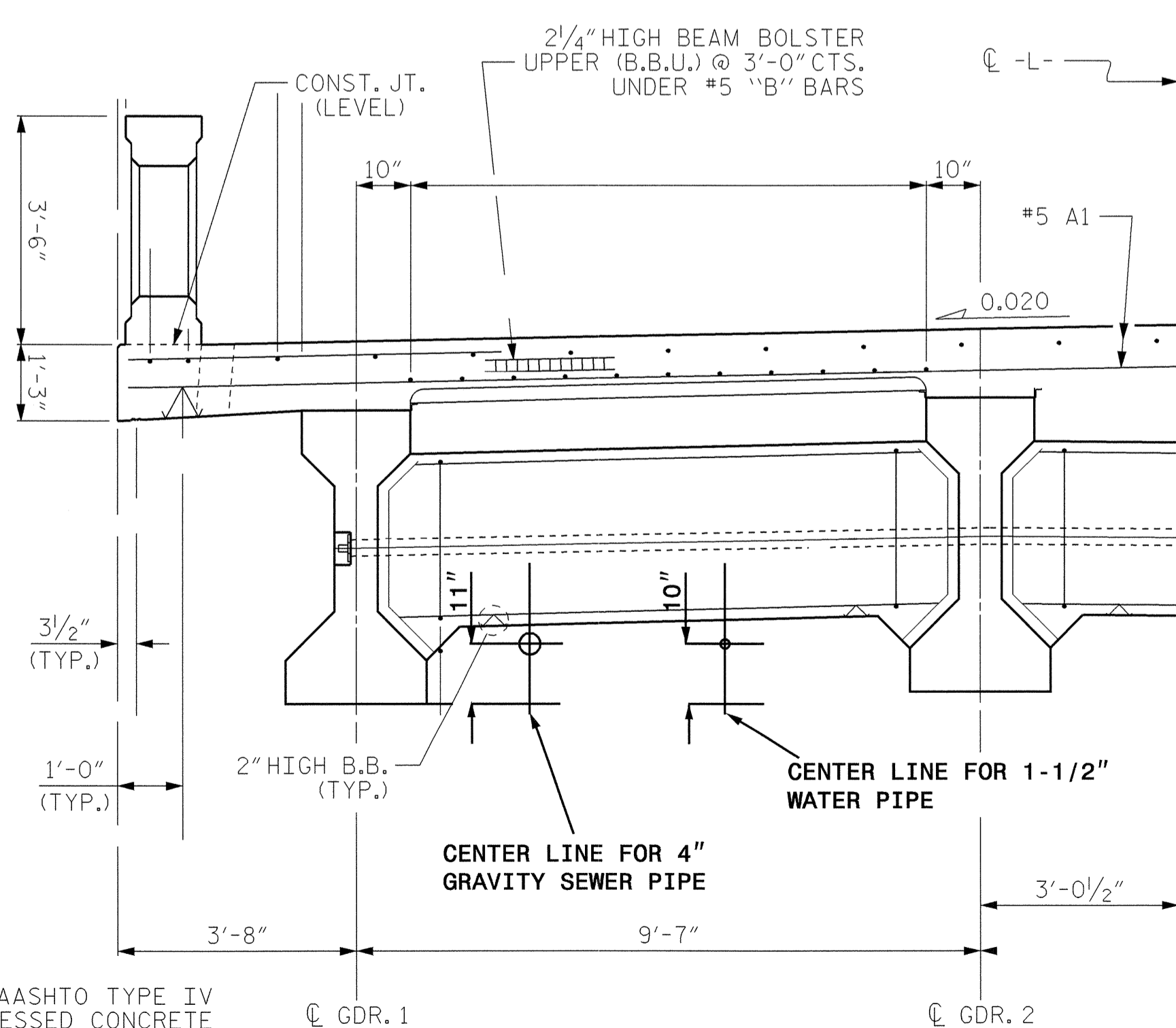


DISTANCE FROM THE BOTTOM OF THE GIRDER TO THE BOTTOM OF THE 4" SEWER PIPE AND 1-1/2" WATER PIPE

AT STEEL INTERMEDIATE DIAPHRAGMS

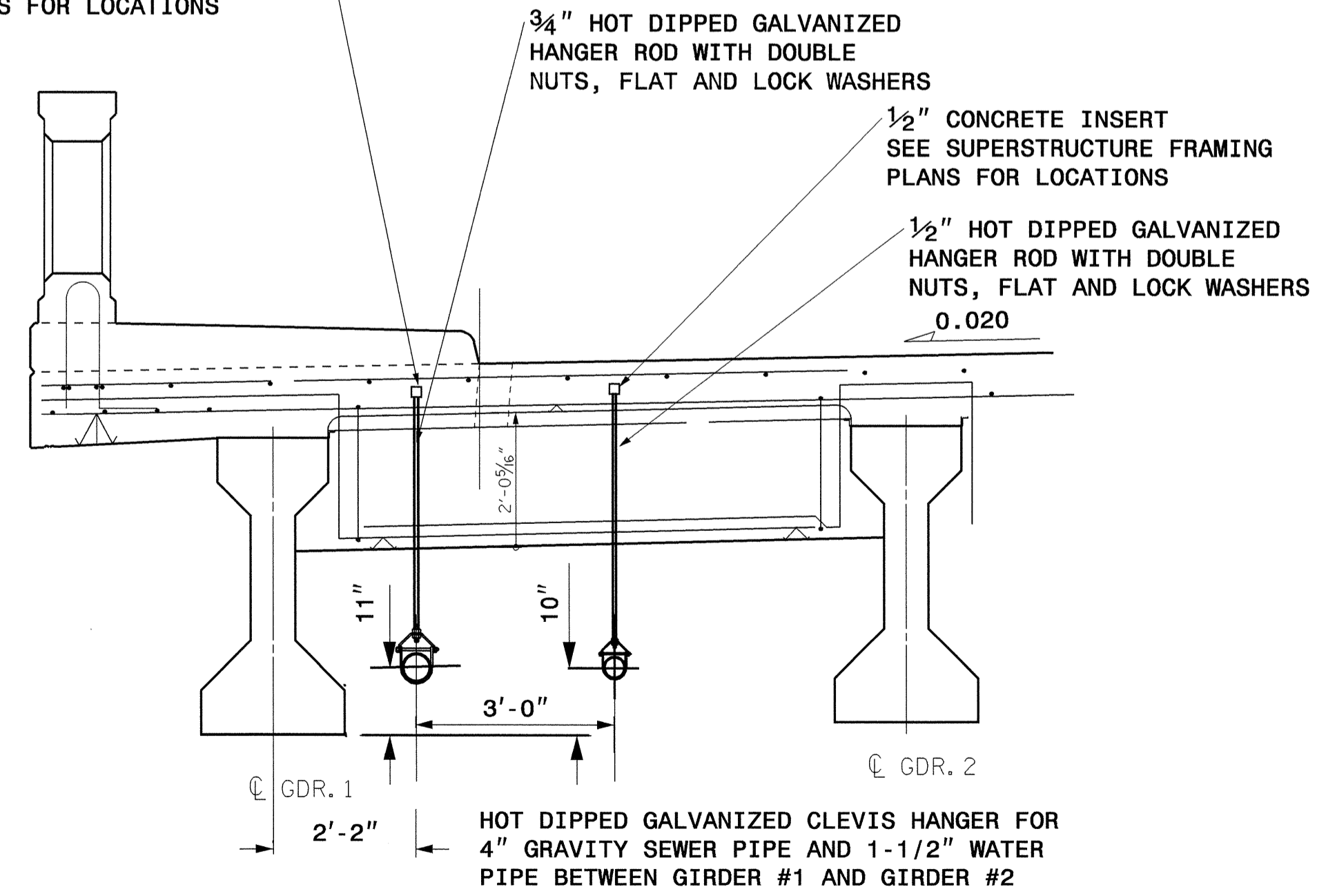
AT STEEL INTERMEDIATE DIAPHRAGMS

TYPICAL SECTION SHOWING STEEL INTERMEDIATE DIAPHRAGMS



AT CONCRETE INTERMEDIATE DIAPHRAGMS

3/4" CONCRETE INSERT
SEE SUPERSTRUCTURE FRAMING PLANS FOR LOCATIONS



HOT DIPPED GALVANIZED CLEVIS HANGER FOR 4" GRAVITY SEWER PIPE AND 1-1/2" WATER PIPE BETWEEN GIRDER #1 AND GIRDER #2

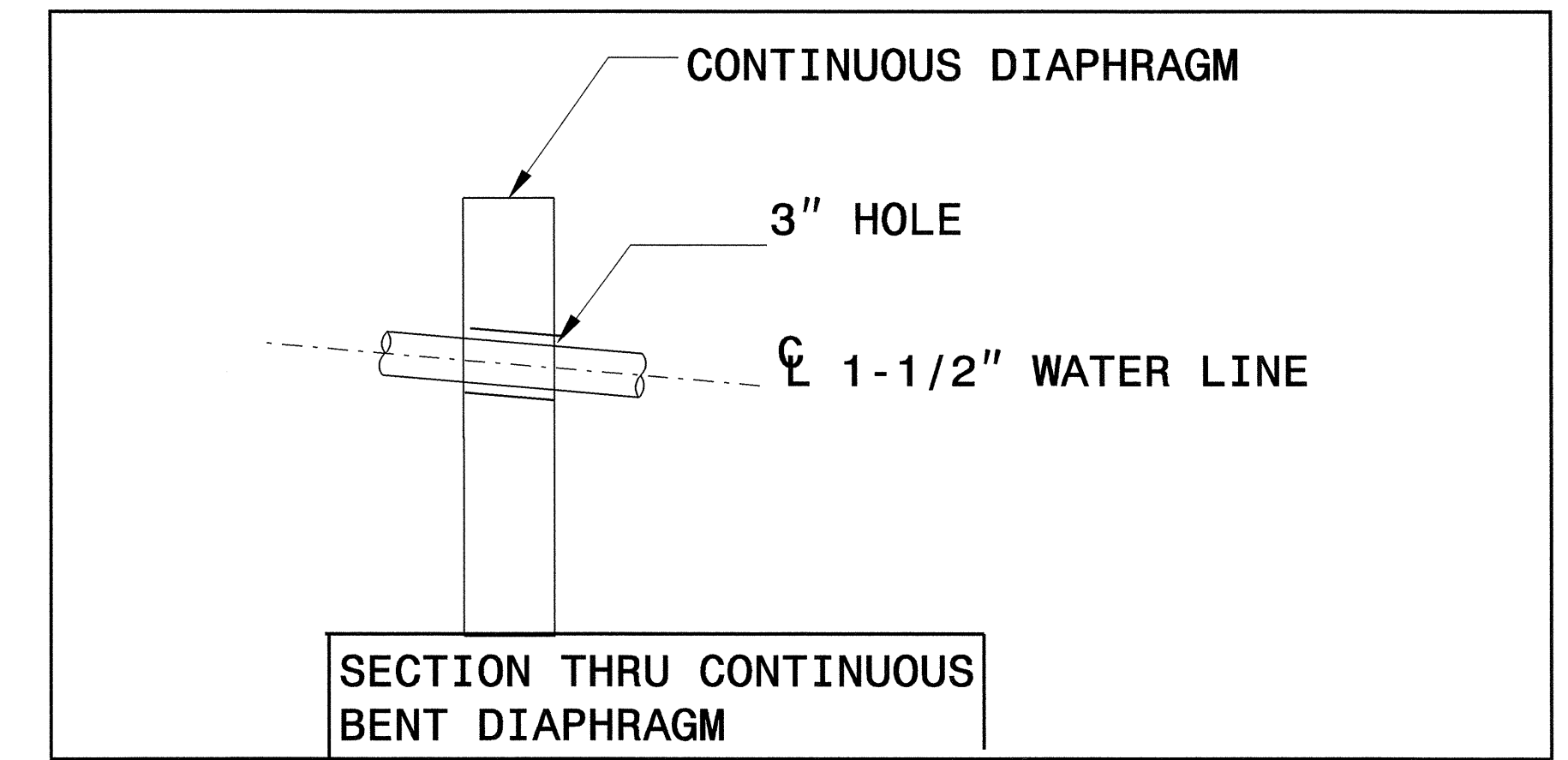
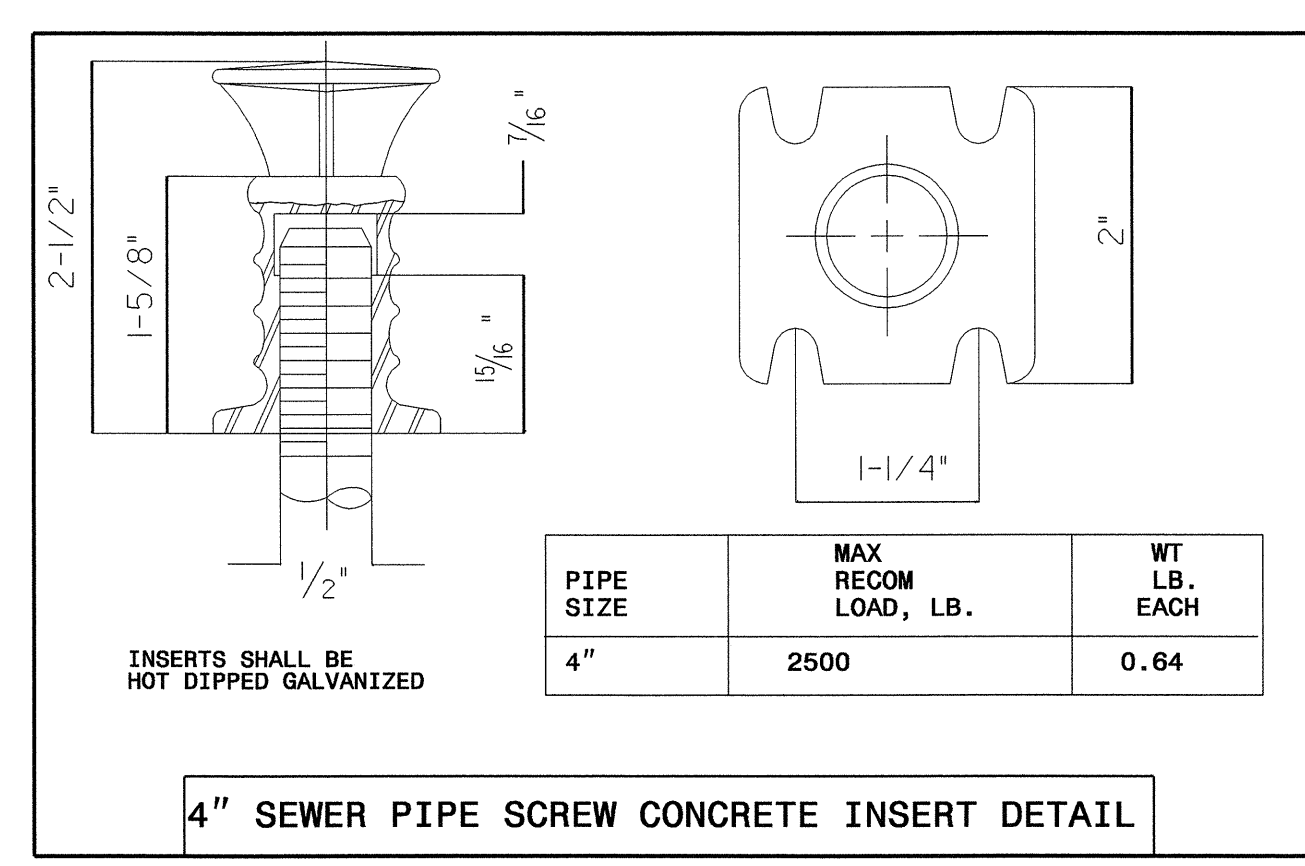
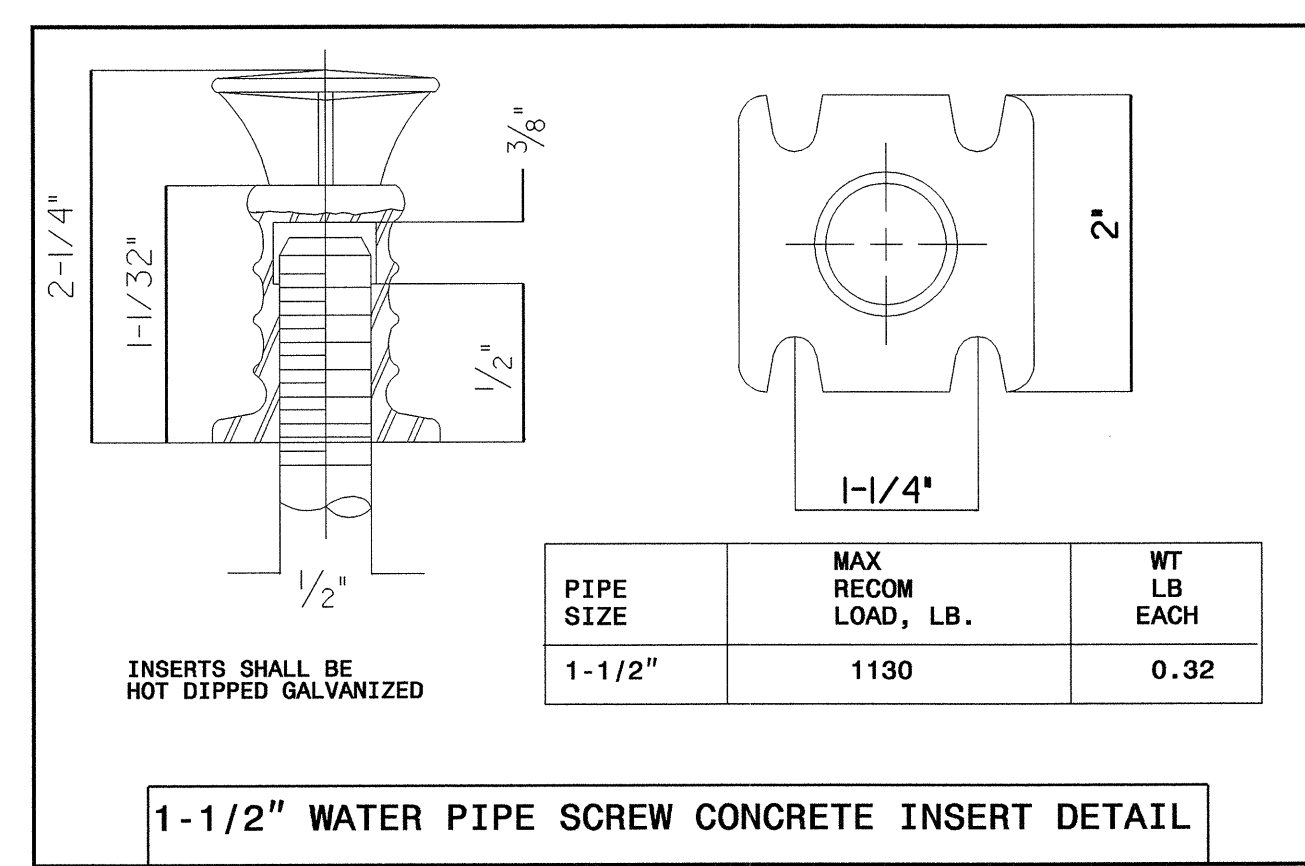
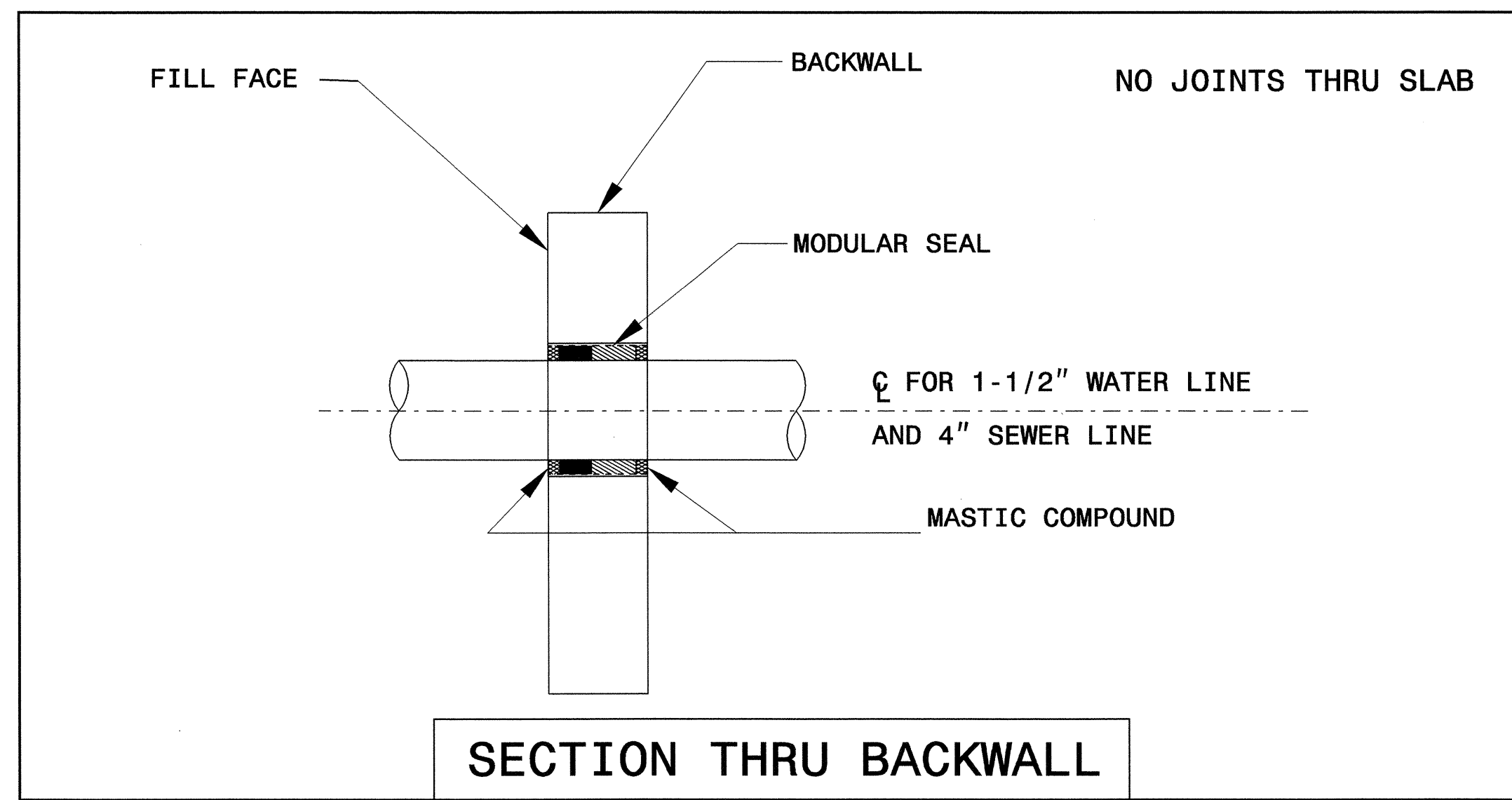
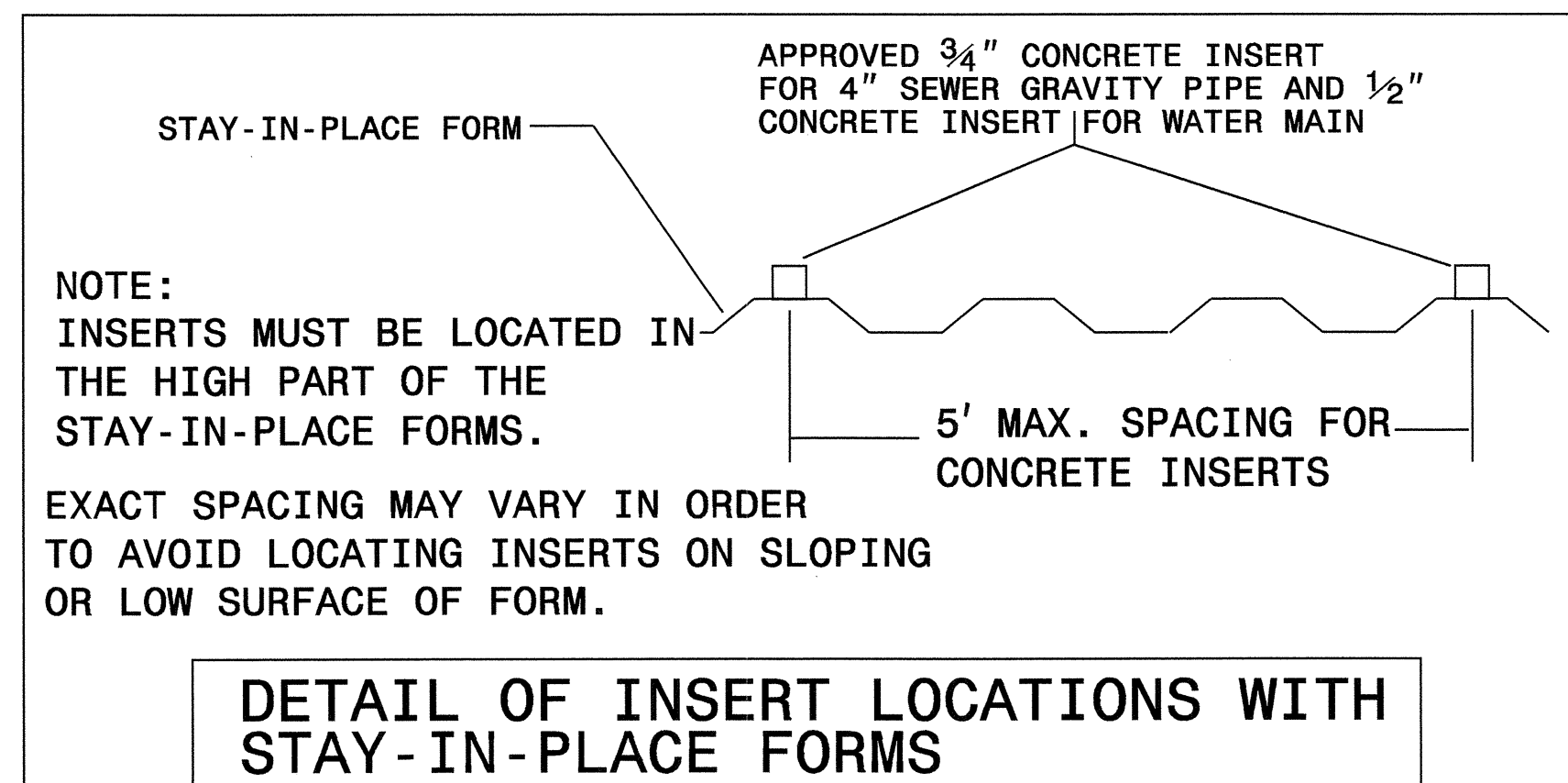
ALL BOLTS, NUTS AND WASHERS SHALL BE HOT DIPPED GALVANIZED

SHEET 1 OF 5

REVISIONS						SHEET NO.
NO.	BY:	DATE:	NO.	BY:	DATE:	TOTAL SHEETS
1			3			
2			4			

PROJECT REFERENCE NO. B-2532	SHEET NO. UC-7
DESIGNED BY: ARK	
DRAWN BY: ARK	
CHECKED BY: RGW	
APPROVED BY: RGW	
REVISED:	
NORTH CAROLINA DEPARTMENT OF TRANSPORTATION PROJECT SERVICES UNIT PHONE: (919) 250-4128 FAX: (919) 250-4119	
UTILITY CONSTRUCTION PLANS ONLY	

UTILITY CONSTRUCTION

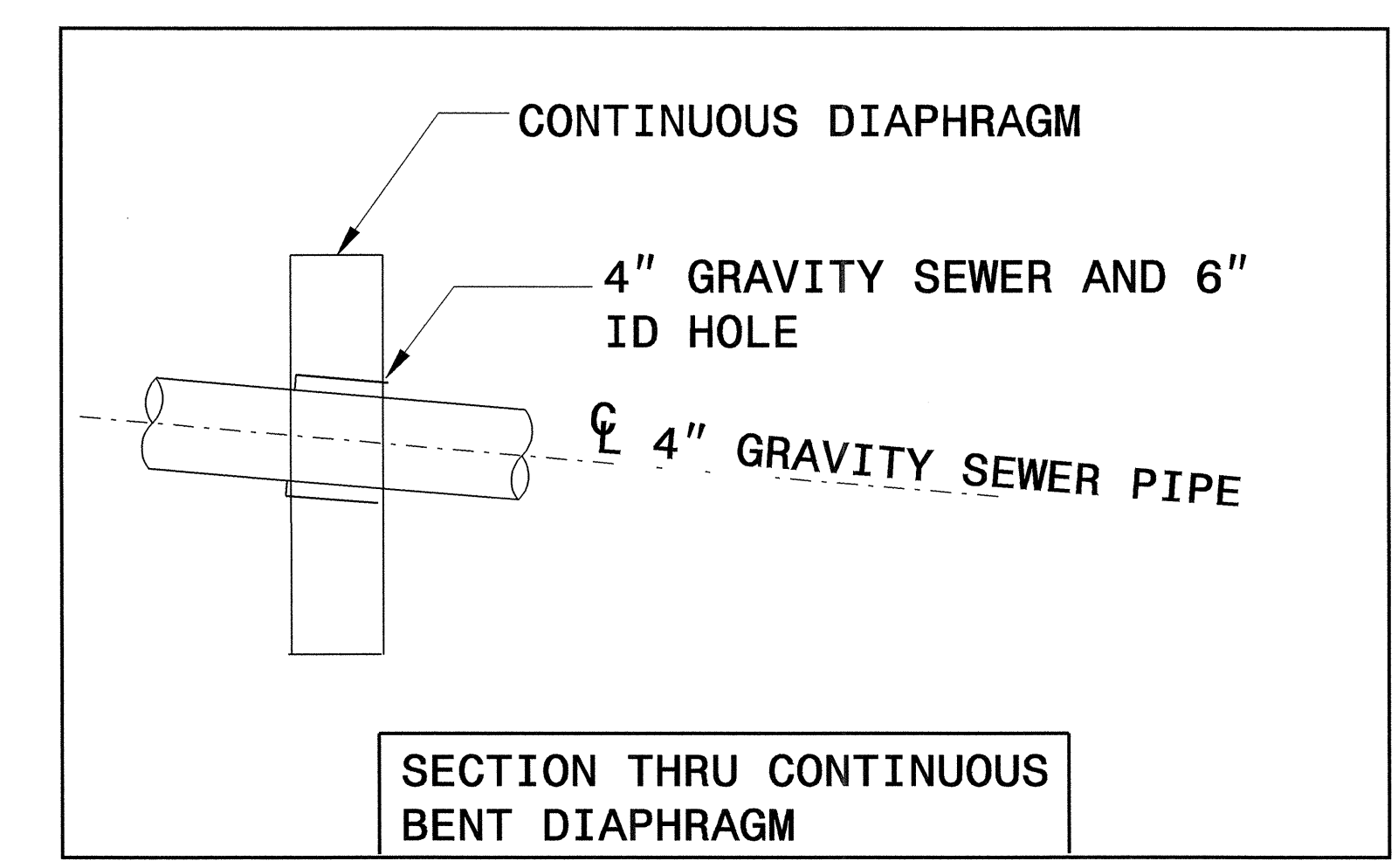


BILL OF MATERIALS FOR 1-1/2" WATER MAIN		
NO.	UNITS	ITEMS
1	75 EA	1/2" GALV. CONCRETE INSERTS
2	75 EA	GALVANIZED CLEVIS HANGER TYPE FOR 1-1/2" PVC SDR 21 WATER PIPE
3	390 FT	1-1/2" PVC SDR 21, WATER PIPE
4	1 EA	MODULAR TYPE CASING SEAL
5	14 LB	MASTIC COMPOUND

THESE MATERIALS ARE ESTIMATED QUANTITIES ONLY AND ARE TO BE FURNISHED BY THE CONTRACTOR FOR THE ATTACHMENT TO THE PROPOSED BRIDGE

BILL OF MATERIALS FOR 4" SEWER MAIN		
NO.	UNITS	ITEMS
1	75 EA	3/4" GALV. CONCRETE INSERTS
2	75 EA	GALVANIZED CLEVIS HANGER FOR 4" SEWER PIPE
3	390 FT	4" PVC SDR 35 SEWER PIPE
4	1 EA	MODULAR TYPE SEAL
5	25 LB	MASTIC COMPOUND
6	5 EA	4" CLEANOUTS
7	5 EA	6" CLEANOUT ACCESS HOLE WITH COVER

THESE MATERIALS ARE ESTIMATED QUANTITIES ONLY AND ARE TO BE FURNISHED BY THE CONTRACTOR FOR THE ATTACHMENT TO THE PROPOSED BRIDGE



REVISIONS						SHEET NO.
NO.	BY:	DATE:	NO.	BY:	DATE:	TOTAL SHEETS
1			3			
2			4			

