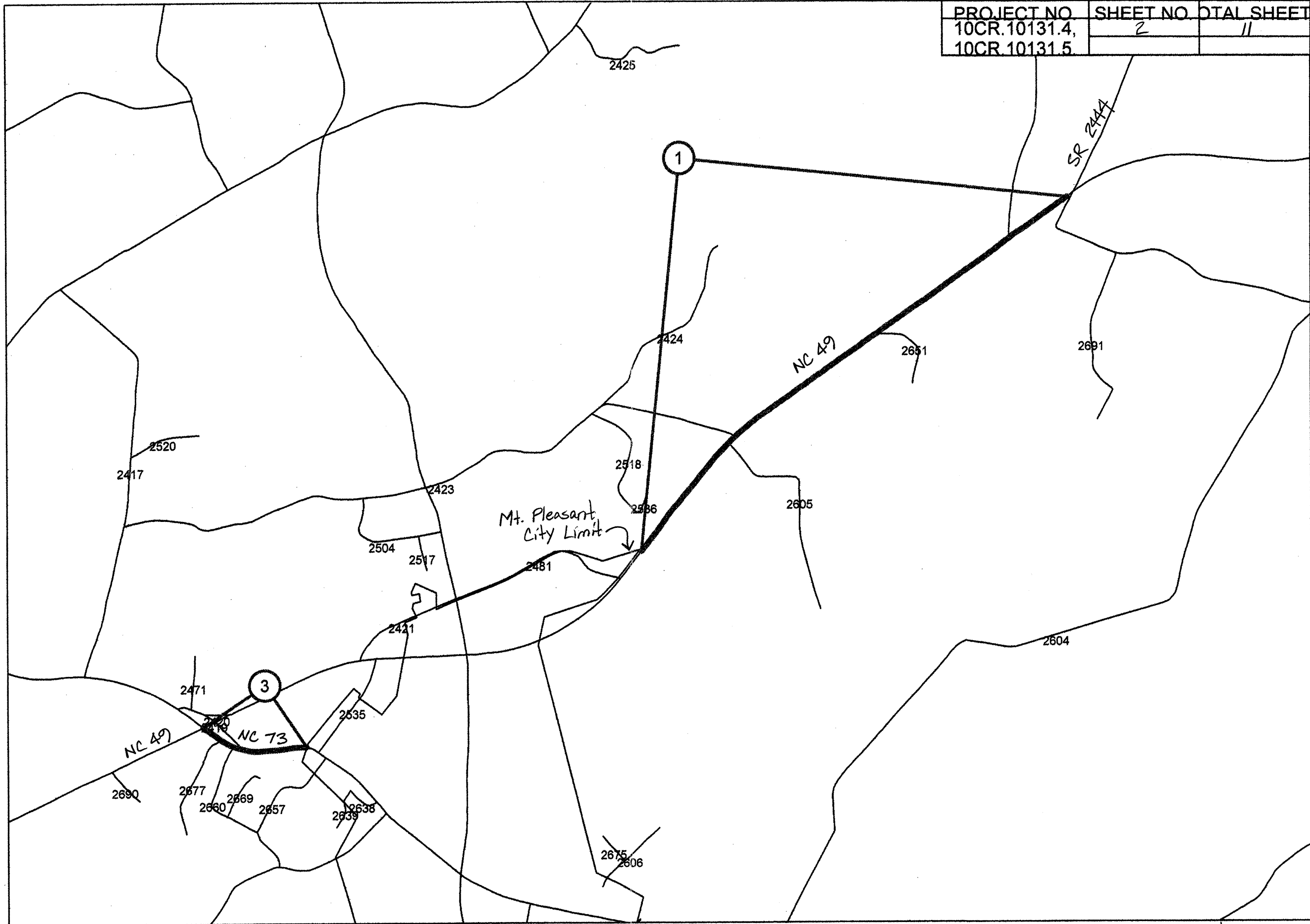
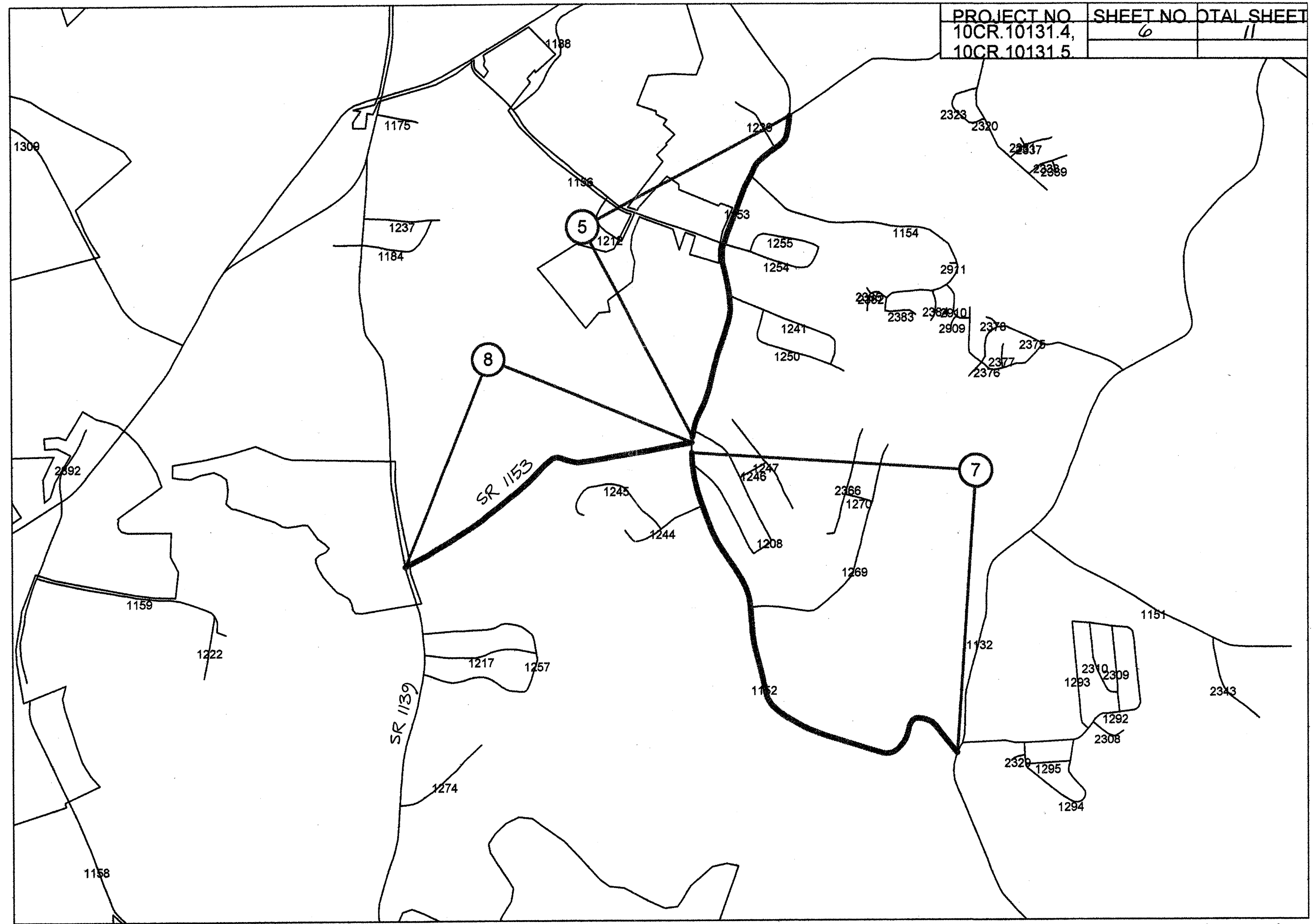


PROJECT NO	SHEET NO	TOTAL SHEETS
10CR.10131.4, 10CR.10131.5	2	11



Cabbarus County



Cabarrus County

PROJECT NO.	SHEET NO.	TOTAL NO.
10CR.10131.4, ETC.	8	11

SUMMARY OF QUANTITIES

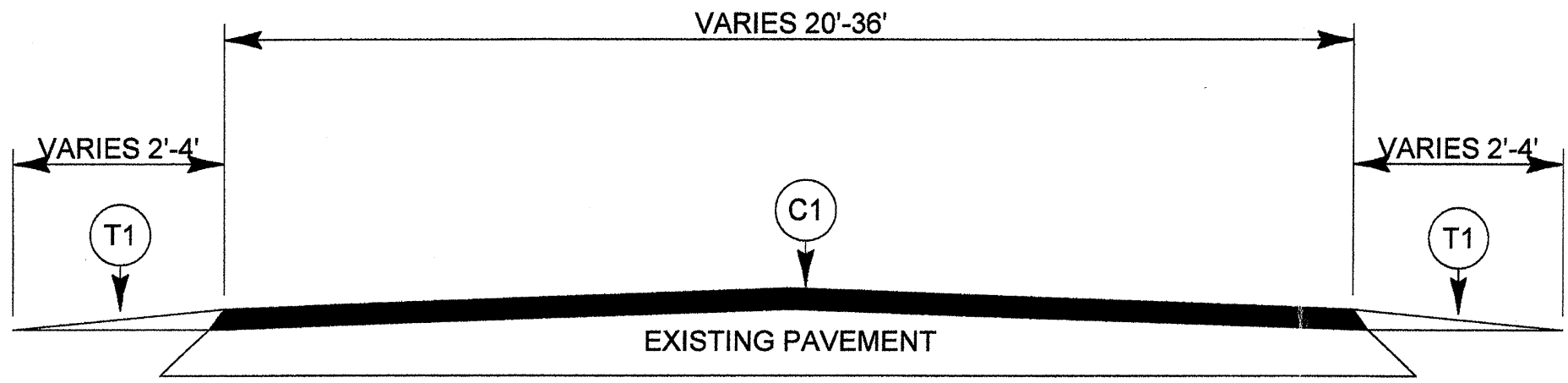
PROJECT NO	COUNTY	MAP NO	ROUTE	DESCRIPTION	TYP	LENGTH MI	WIDTH FT	INCIDENTAL STONE BASE TONS	SHOULDER CON- STRUCTION SMI	SHOULDER RECON- STRUCTION SMI	DITCHING LF	1½" MILLING SY	INCIDENT. MILLING SY	BASE COURSE, B25.0C TONS	INTERMED. COURSE, I19.0C TONS	SURFACE COURSE, S9.5C TONS	LEVELING COURSE, S9.5C TONS	PG 64-22 PLANT MIX TONS	PG 70-22 PLANT MIX TONS	PATCHING EXISTING PAVEMENT TONS	6" DRIVEWAYS SY	ADJUST CATCH BASIN EA	ADJUST MANHOLES EA	ADJUST METER OR VALVE BOX EA	SEED & MULCHING AC
10CR.10131.4	Cabarrus	1	NC 49	FROM SR 2444 (ST STEPHENS CH. RD) TO NCL MT. PLEASANT	1	2.6	22	156		5.2			650			2,935	520		210	780					3.15
TOTAL FOR PROJ NO. 10CR.10131.4						2.6		156		5.2			650			2,935	520		210	780					3.15
10CR.10131.5	Cabarrus	2	NC 200	FROM US 601 TO SR 1006	1	2.63	24	158		5.26			150			3,277	526		231	526					3.18
TOTAL FOR PROJ NO. 10CR.10131.5						2.63		158		5.26			150			3,277	526		231	526					3.18
10CR.10131.6	Cabarrus	3	NC 73	FROM NC 49 TO WCL MT. PLEASANT	1	0.42	24	0		0.84		5914	60			749	42		48	84					0.51
TOTAL FOR PROJ NO. 10CR.10131.6						0.42		0		0.84		5914	60			749	42		48	84					0.51
10CR.20131.20	Cabarrus	4	SR 1394 (POPLAR TENT RD)	FROM PVMT JOINT AT SR 1449 (HARRIS RD) TO MECK CO LINE	2	1.2	21	72		2.4			120		2,228	1,374	120	105	90	360		1	1	1	1.45
TOTAL FOR PROJ NO. 10CR.20131.20						1.2		72		2.4		0	120		2,228	1,374	120	105	90	360		1	1	1	1.45
10CR.2031.21	Cabarrus	5	SR 1153 (ZION CH RD)	FROM SR 1153 (ARCHIBALD RD) TO SR 1153 (ZION CH RD E)	1	1.22	21	73		2.44			170			1,520	366		115	366					1.48
TOTAL FOR PROJ NO. 10CR.2031.21						1.22		73		2.44		0	170			1,520	366		115	366					1.48
10CR.20131.22	Cabarrus	6	SR 2411 (IRISH POTATO RD)	FROM NC 73 TO SR 2408 (GOLD HILL RD)	1	2	24	120		4			140			2,453	600		186	600					2.42
TOTAL FOR PROJ NO. 10CR.20131.22						2		120		4		0	140			2,453	600		186	600					2.42
10CR.20131.23	Cabarrus	7	SR 1152 (ZION CH RD)	FROM SR 1132 (FLOWES STORE RD) TO SR 1153 (ARCHIBALD RD)	1	1.7	20	102		3.4			140			1,761	170		117	340					2.06
TOTAL FOR PROJ NO. 10CR.20131.23						1.7		102		3.4		0	140			1,761	170		117	340					2.06
10CR.20131.24	Cabarrus	8	SR 1153 (ARCHIBALD RD)	FROM SR 1139 (ROCKY RIVER RD) TO SR 1152 (ZION CH RD)	3	1.13	20	68	2.26		452		110	806		1,121	226	35	82	226	140				2.73
TOTAL FOR PROJ NO. 10CR.20131.24						1.13		68	2.26	0	452	0	110	806		1,121	226	35	82	226	140				2.73
10CR.20131.25	Cabarrus	9	SR 2400 (IRISH POTATO RD)	FROM SR 1002 (OLD CONC-SALS RD) TO SR 2402 (SAPP RD)	1	1.3	24	0		2.6			150			1,646	325		120	455					1.57
TOTAL FOR PROJ NO. 10CR.20131.25						1.3		0	0	2.6	0	0	150			1,646	325		120	455					1.57
10CR.20131.26	Cabarrus	10	SR 1600 (SHILOH CH RD)	FROM SR 1601 (ODELL SCHOOL RD) TO PVMT JT	3	2.3	20	138	4.6		920		140	1,641		2,356	460	71	171	460	25				5.57
TOTAL FOR PROJ NO. 10CR.20131.26						2.3		138	4.6	0	920	0	140	1,641		2,356	460	71	171	460	25				5.57
GRAND TOTAL						16.5		887	6.86	26.14	1,372	5,914	1,830	2,447	2,228	19,192	3,355	211	1,370	4,197	165	1	1	1	24.12

PROJECT NO.	SHEET NO.	TOTAL NO.
10CR.10131.4, 10CR.10131.5 10CR.10131.6, ETC.	9	11

THERMOPLASTIC AND PAINT QUANTITIES

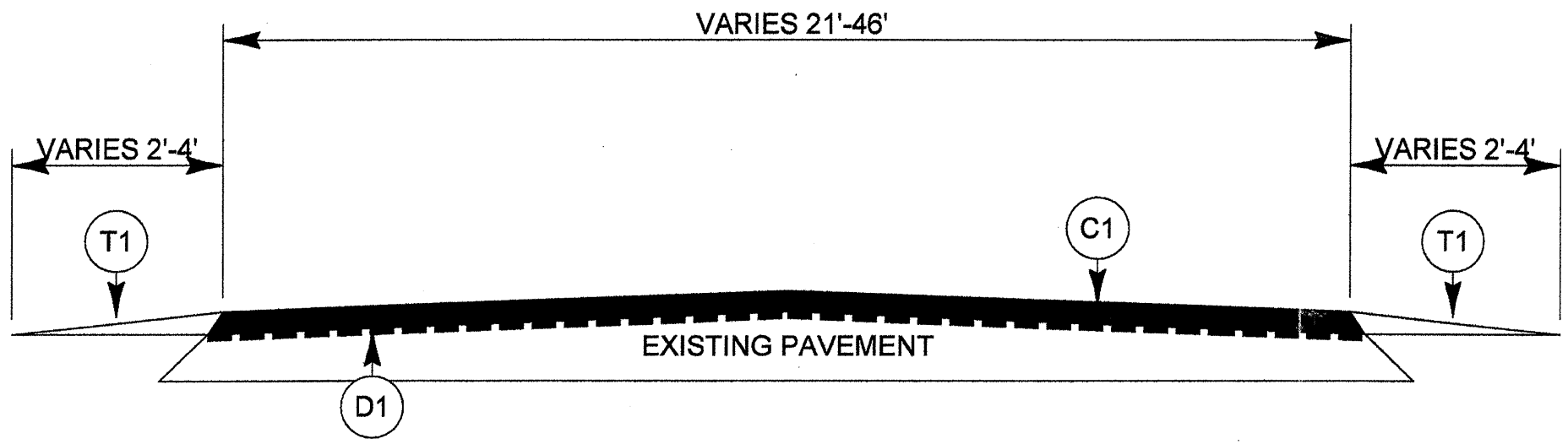
PROJECT NO	COUNTY	MAP NO	ROUTE	DESCRIPTION	4685000000-E	4686000000-E	4725000000-E		4810000000-E		4900000000-N	
					4" X 90 M WHITE THERMO LF	4" X 120 M YELLOW THERMO LF	THERMO LT ARROW 90 M EA	THERMO RT ARROW 90 M EA	4" WHITE PAINT LF	4" YELLOW PAINT LF	YELLOW & YELLOW MARKERS EA	CYAN & RED MARKERS EA
10CR.10131.4	Cabarrus	1	NC 49	FROM SR 2444 (ST STEPHENS CH. RD) TO NCL MT. PLEASANT	27,976	17,160					172	
TOTAL FOR PROJ NO. 10CR.10131.4					27,976	17,160					172	
					172							
10CR.10131.5	Cabarrus	2	NC 200	FROM US 601 TO SR 1006	28,299	17,358					174	
TOTAL FOR PROJ NO. 10CR.10131.5					28,299	17,358					174	
					174							
10CR.10131.6	Cabarrus	3	NC 73	FROM NC 49 TO WCL MT. PLEASANT	4,519	2,772	2				55	21
TOTAL FOR PROJ NO. 10CR.10131.6					4,519	2,772	2				55	21
							2		76			
10CR.20131.20	Cabarrus	4	SR 1394 (POPLAR TENT RD)	FROM PVMT JOINT AT SR 1449 (HARRIS RD) TO MECK CO LINE	12,912	7,920	2	2	12,912	7,920	79	40
TOTAL FOR PROJ NO. 10CR.20131.20					12,912	7,920	2	2	12,912	7,920	79	40
							4		20,832		119	
10CR.2031.21	Cabarrus	5	SR 1153 (ZION CH RD)	FROM SR 1153 (ARCHIBALD RD) TO SR 1153 (ZION CH RD E)	13,127	8,052					81	20
TOTAL FOR PROJ NO. 10CR.2031.21					13,127	8,052					81	20
					101							
10CR.20131.22	Cabarrus	6	SR 2411 (IRISH POTATO RD)	FROM NC 73 TO SR 2408 (GOLD HILL RD)	21,520	13,200					132	
TOTAL FOR PROJ NO. 10CR.20131.22					21,520	13,200					132	
					132							
10CR.20131.23	Cabarrus	7	SR 1152 (ZION CH RD)	FROM SR 1132 (FLOWES STORE RD) TO SR 1153 (ARCHIBALD RD)	18,292	11,220					112	
TOTAL FOR PROJ NO. 10CR.20131.23					18,292	11,220					112	
					112							
10CR.20131.24	Cabarrus	8	SR 1153 (ARCHIBALD RD)	FROM SR 1139 (ROCKY RIVER RD) TO SR 1152 (ZION CH RD)	12,159	7,458					75	
TOTAL FOR PROJ NO. 10CR.20131.24					12,159	7,458					75	
					75							
10CR.20131.25	Cabarrus	9	SR 2400 (IRISH POTATO RD)	FROM SR 1002 (OLD CONC-SALS RD) TO SR 2402 (SAPP RD)	13,988	8,580					86	
TOTAL FOR PROJ NO. 10CR.20131.25					13,988	8,580					86	
					86							
10CR.20131.26	Cabarrus	10	SR 1600 (SHILOH CH RD)	FROM SR 1601 (ODELL SCHOOL RD) TO PVMT JT	24,748	15,180					152	
TOTAL FOR PROJ NO. 10CR.20131.26					24,748	15,180					152	
					152							
GRAND TOTAL					177,540	108,900	4	2	12,912	7,920	1,118	81
							6		20,832		1,199	

PROJECT NO.	SHEET NO.	TOTAL SHEETS
10CR.10131.4, 10CR.10131.5,	10	11

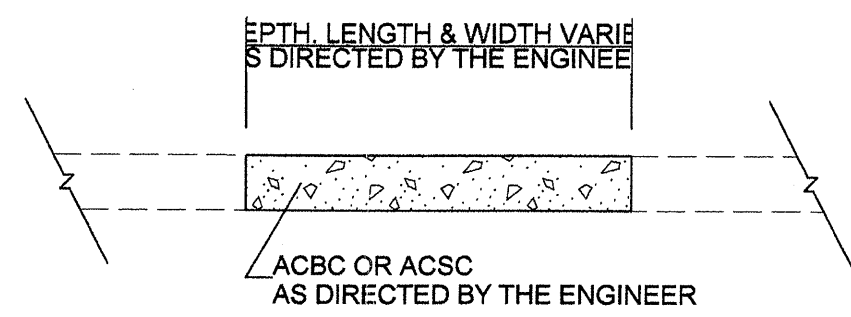


MILL 1.5" ON MAP 3.

TYPICAL SECTION NO. 1



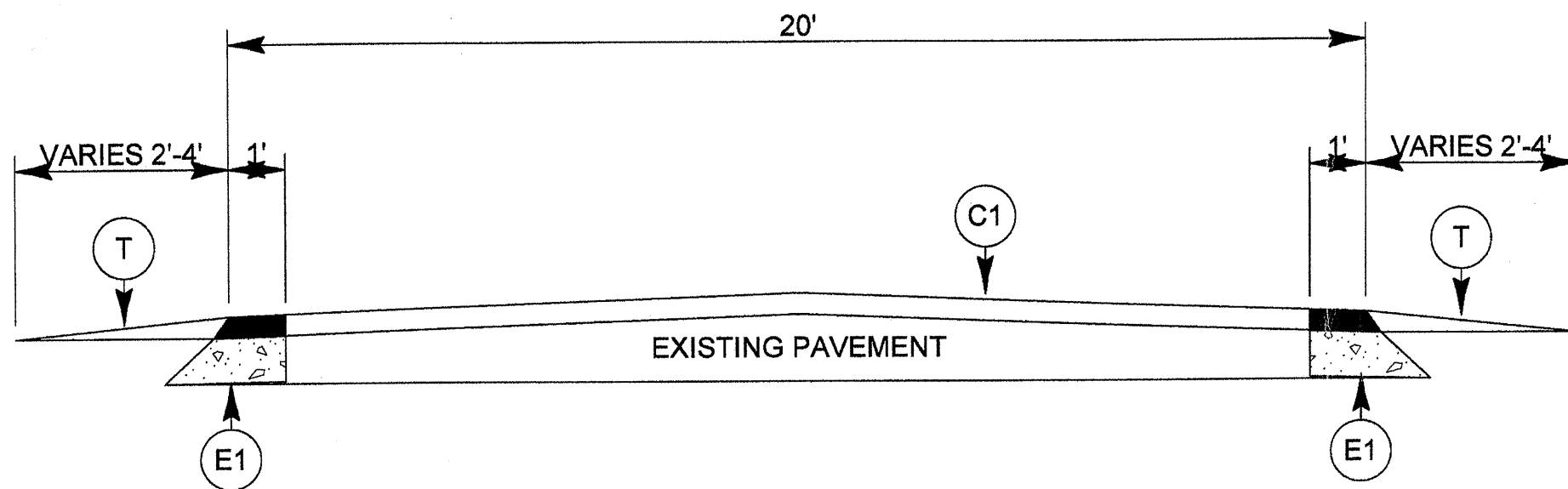
TYPICAL SECTION NO. 2



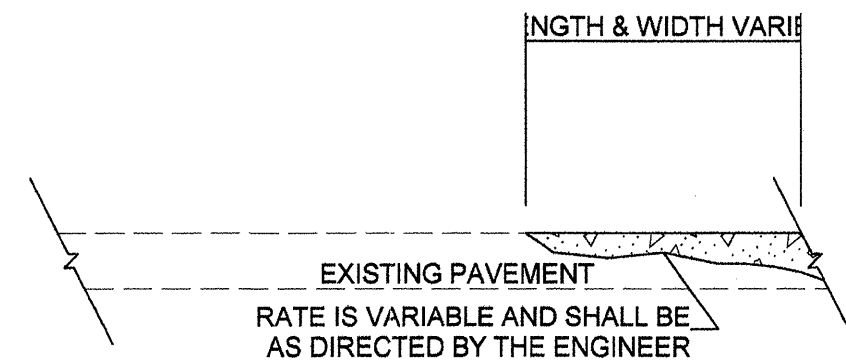
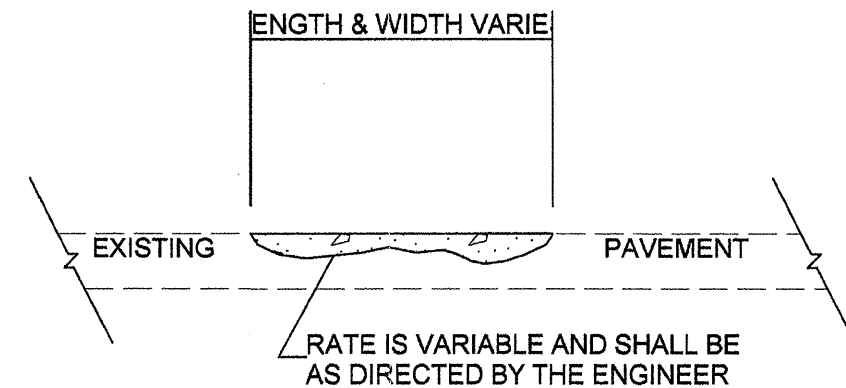
PATCHING EXISTING PAVEMENT

PAVEMENT SCHEDULE	
C1	PROP. APPROX. 1.5" ASPHALT CONC. SURFACE COURSE, TYPE S9.5C, AT AN AVERAGE RATE OF 168 LBS. PER SQ. YD.
D1	PROP. APPROX. 2.5" ASPHALT CONC. BINDER COURSE, TYPE I19.0C, AT AN AVERAGE RATE OF 285 LBS. PER SQ. YD.
E1	PROP. APPROX. 8" ASPHALT CONC. BASE COURSE, TYPE B25.0C, AT AN AVERAGE RATE OF 456 LBS. PER SQ. YD. IN EACH OF TWO LAYERS
T	SHOULDER CONSTRUCTION
T1	SHOULDER RECONSTRUCTION

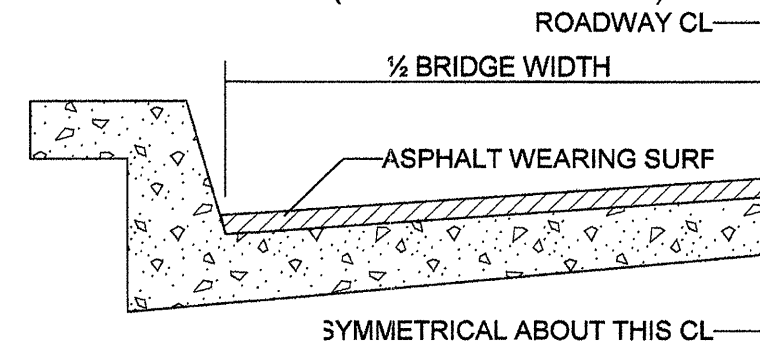
PROJECT NO.	SHEET NO.	TOTAL SHEETS
10CR.10131.4, 10CR.10131.5,	//	//



TYPICAL SECTION NO. 3



ASPHALT CONCRETE SURFACE COURSE (LEVELING COURSE)



BRIDGE HALF TYPICAL SECTION

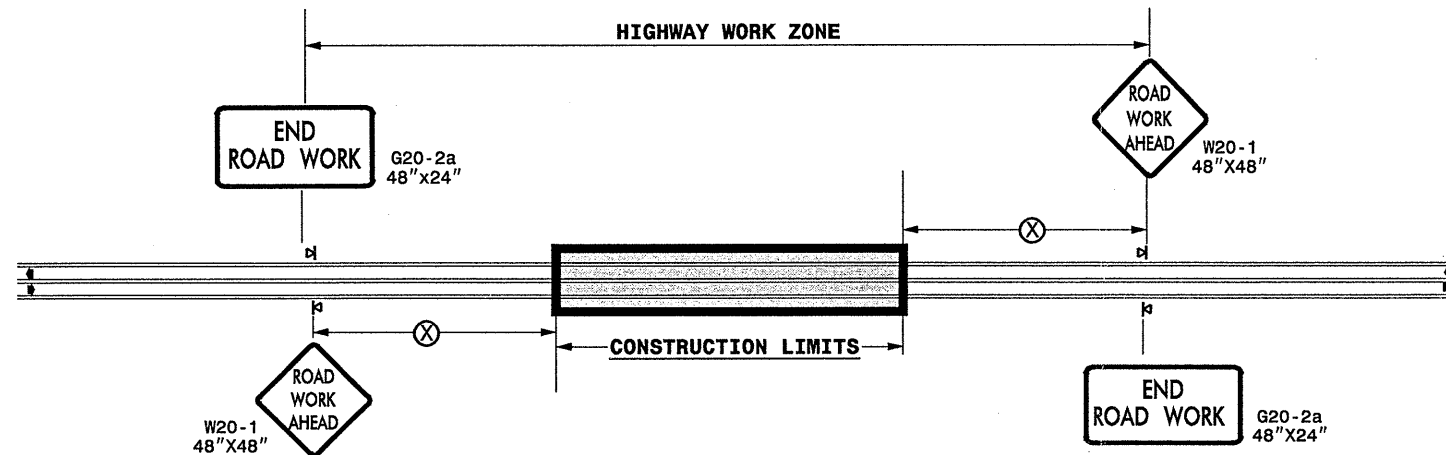
FOR BRIDGES WITH FLOOR DRAINS, CARE SHALL BE EXERCISED IN PLACING THE WEARING SURFACE AROUND FLOOR DRAINS SO AS NOT TO HINDER EFFECTIVE DRAINAGE. ALL DRAINS SHALL BE LEFT OPEN

THE PROPOSED WEARING SURFACE SHALL VARY IN THICKNESS AS NECESSARY TO PROVIDE A SMOOTH RIDING SURFACE. A THICKNESS OF NOT LESS THAN 5/8" SHALL BE PROVIDED. THE MAXIMUM THICKNESS SHALL PREFERABLY BE 1 1/2" UNLESS IT IS IMPRACTICAL TO PROVIDE A SMOOTH RIDING SURFACE OTHERWISE.

NOTES

ALL UNPAVED ROADS TO BE RESURFACED 50' FROM EDGE OF PAVEMENT OF MAIN PROJECT.
 ALL PAVED S.R. ROADS TO BE RESURFACED TO THE ENDS OF THE RADII, OR AS DIRECTED BY THE ENGINEER.
 EDGES, PAVEMENT WIDENING, INTERSECTIONS AND BRIDGE FLARES ARE INCLUDED IN THE TABLE OF QUANTITIES.
 SHOULDERS AND DITCHES ARE TO BE CONSTRUCTED BY OTHERS UNLESS OTHERWISE INDICATED.
 BRIDGES ARE TO BE RESURFACED AT LOCATIONS AND TO DEPTH AS DIRECTED BY THE ENGINEER.

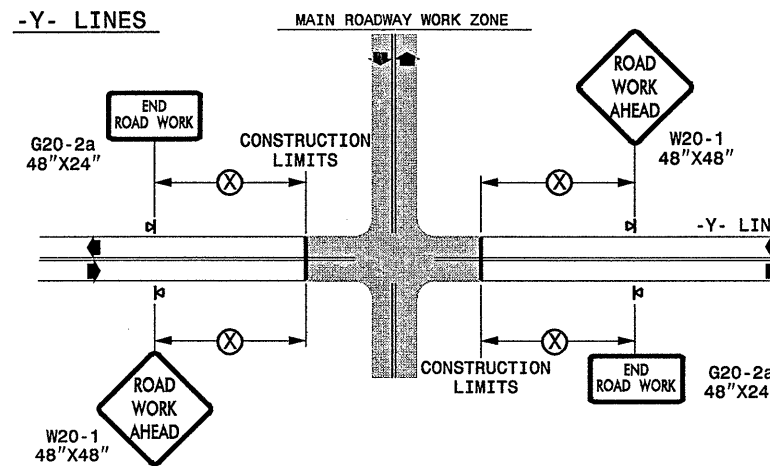
TWO-WAY UNDIVIDED ** (L-LINES)



POSTED SPEED LIMIT (M.P.H.)	RECOMMENDED MINIMUM SIGN SPACING
≤ 50	500'
≥ 55	1000'

STATE OF NORTH CAROLINA
DEPT. OF TRANSPORTATION
DIVISION OF HIGHWAYS
RALEIGH, N.C.

ROADWAYS INTERSECTING ALONG 2 WAY UNDIVIDED WORK ZONE (Y-LINES)



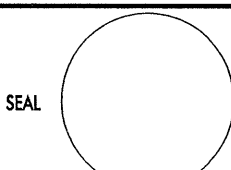

DETAIL DRAWING
FOR TWO-WAY UNDIVIDED
WORK ZONE WARNING SIGNS

GENERAL NOTES

- USE FLUORESCENT ORANGE SHEETING (TYPE VII OR HIGHER) ON ALL ADVANCE WORK ZONE SIGNS.
- DO NOT INSTALL ADVANCE WARNING SIGNS MORE THAN 3 DAYS PRIOR TO BEGINNING OF WORK.
- ALL SIGN SPACING DIMENSIONS ARE APPROXIMATE, FIELD ADJUST AS NECESSARY OR AS DIRECTED.
- USE PORTABLE WORK ZONE SIGNS ONLY WITH PORTABLE WORK ZONE SIGN STANDS SPECIFICALLY DESIGNED FOR ONE ANOTHER. PORTABLE WORK ZONE SIGNS MAY BE ROLL UP OR APPROVED COMPOSITE.
- PROVIDE PORTABLE WORK ZONE SIGN STANDS, PORTABLE SIGNS AND SIGN SHEETING WHICH ARE LISTED ON THE NORTH CAROLINA DEPARTMENT OF TRANSPORTATION'S APPROVED PRODUCT LIST OR ACCEPTED AS TRAFFIC QUALIFIED BY THE TRAFFIC CONTROL UNIT.
- ** TWO-WAY UNDIVIDED ADVANCE WARNING SIGN CONFIGURATION MAY BE USED ON URBAN MULTI-LANE FACILITIES WHERE CONDITIONS LIMIT THE USE OF DUAL MOUNTED SIGNS AS DETERMINED BY THE ENGINEER.

LEGEND	
◀	PORTABLE SIGN
➔	DIRECTION OF TRAFFIC FLOW

SHEET 1 OF 1

APPROVED: _____	DATE: _____	DETAIL DRAWING FOR TWO-WAY UNDIVIDED ADVANCED WORK ZONE WARNING SIGNS	
			
SCALE: NONE	REVISIONS		
DATE: _____	7-98 10/01	CADD FILE	
DWG. BY: _____	10-98 03/04		
DESIGN BY: _____	01/01 11/04		
REVIEWED BY: _____			

14-DEC-2006 10:17
 I:\D:\OFFICE\GROUPS-WZT\CC\designgroup4\resurfacing\resurfacing2006\div\0\10cr101314etccobarrus\0cr101314_2wayundivurbfrwys\july2006.dgn
 Desymors AT WZTC206427