

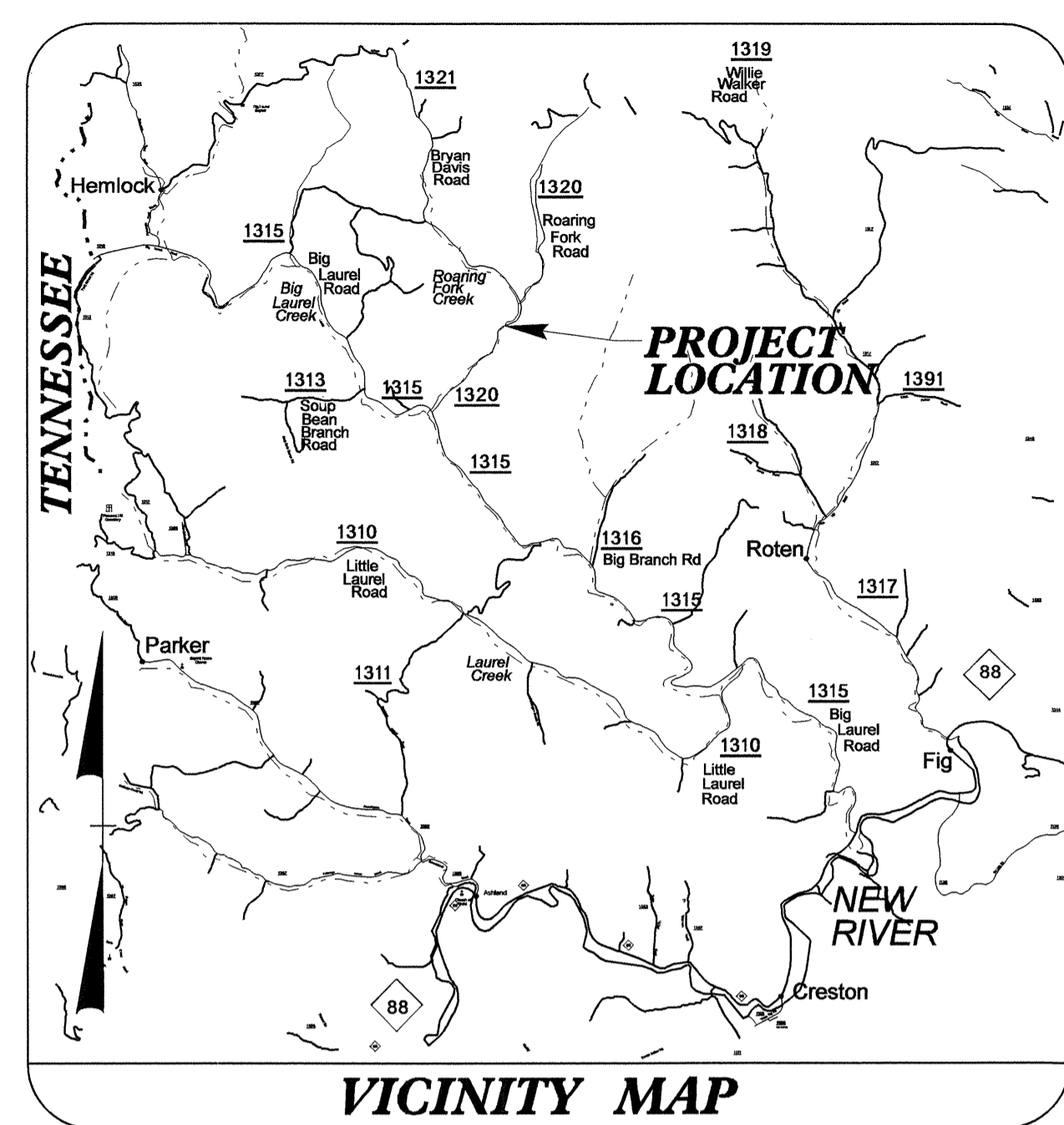
09/08/09

TIP PROJECT: B-4013

T.I.P. NO.	SHEET NO.
B-4013	UO-1

STATE OF NORTH CAROLINA
DIVISION OF HIGHWAYS

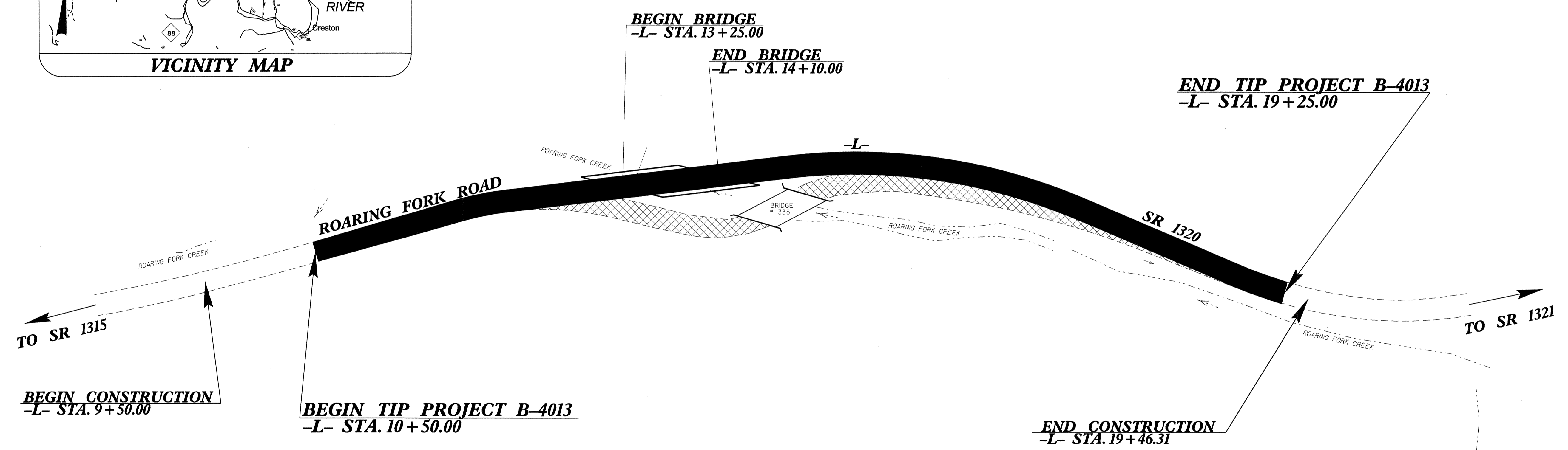
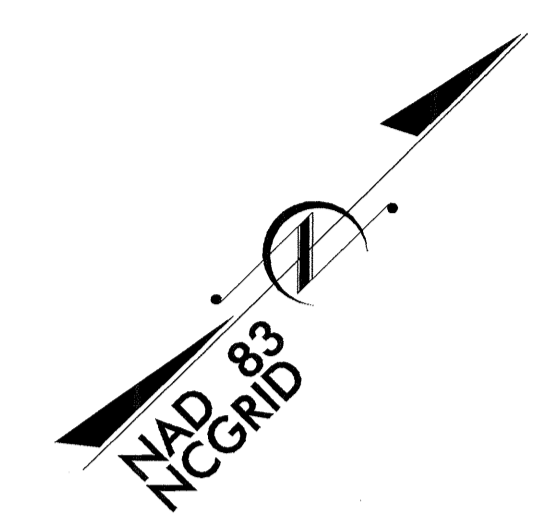
UTILITY BY OTHERS PLANS
ASHE COUNTY



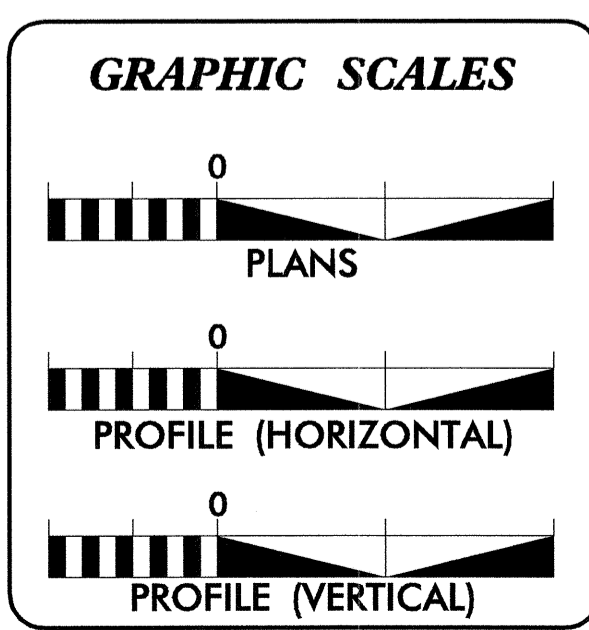
VICINITY MAP

LOCATION: BRIDGE NO.33 OVER ROARING FORK CREEK
ON SR 1320 (ROARING FORK RD.)

TYPE OF WORK: RELOCATE POWER AND TELEPHONE LINES

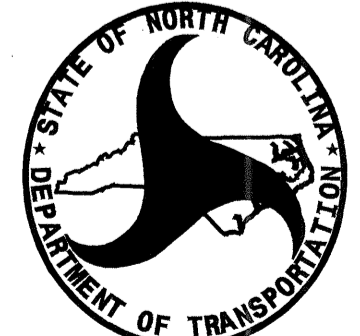


30-OCT-2006 08:23
\\fs1\proj\104013\ut_ucl.dgn
USER: [unreadable]



INDEX OF SHEETS	
SHEET NO.	DESCRIPTION
UO-1	TITLE SHEET
UO-2	UTILITY BY OTHERS PLAN SHEETS

UTILITY OWNERS ON PROJECT
(1) SKYLINE TELEPHONE
(2) BLUE RIDGE EMC



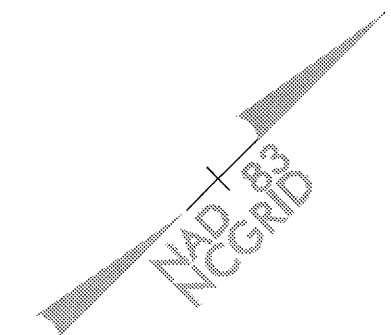
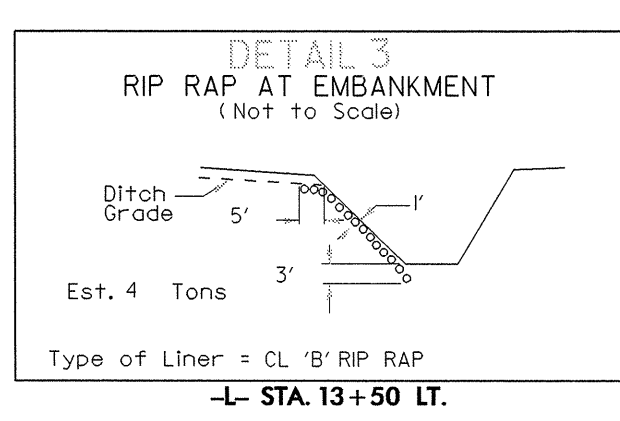
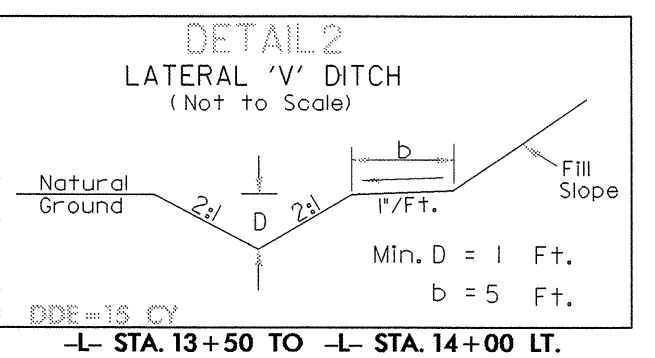
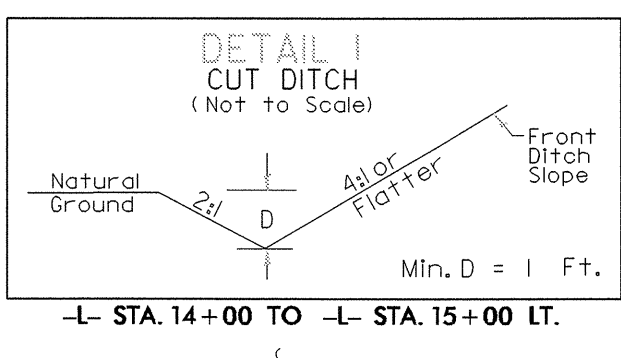
PREPARED IN THE OFFICE OF:
DIVISION OF HIGHWAYS
DESIGN SERVICES
UTILITY SECTION

1591 MAIL SERVICES CENTER
RALEIGH, NC 27699-1591
PHONE (919) 250-4128
FAX (919) 250-4119

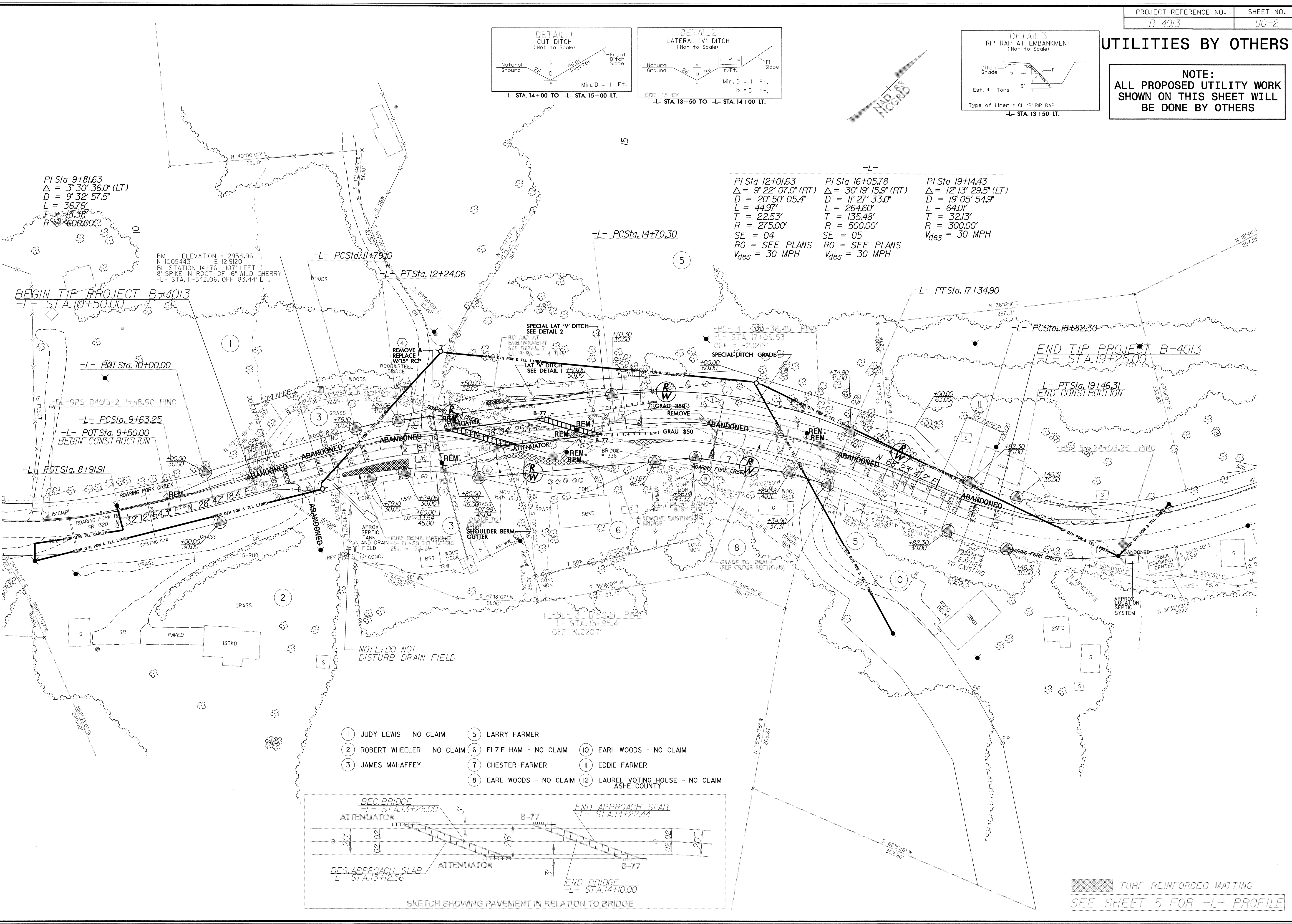
Roger Worthington, P.E. UTILITIES SECTION ENGINEER
Corey Bousquet, P.E. UTILITIES SQUAD LEADER PROJECT ENGINEER
Kifah Kamil UTILITIES PROJECT DESIGNER

UTILITIES BY OTHERS

NOTE:
ALL PROPOSED UTILITY WORK
SHOWN ON THIS SHEET WILL
BE DONE BY OTHERS



5/14/2006 15:50 pro:\b\1013.ut.uo2.dgn



BM 1 ELEVATION = 2958.96
 N 1005443 E 1219120
 BL STATION 14+76.107 LEFT
 8' SPIKE IN ROOT OF 16" WILD CHERRY
 -L- STA. 11+542.06, OFF 83.44' LT.

PI Sta 12+01.63 $\Delta = 9^\circ 22' 07.0''$ (RT) $D = 20^\circ 50' 05.4''$ $L = 44.97'$ $T = 22.53'$ $R = 275.00'$ SE = 04 RO = SEE PLANS Vdes = 30 MPH	PI Sta 16+05.78 $\Delta = 30^\circ 19' 15.9''$ (RT) $D = 11^\circ 27' 33.0''$ $L = 264.60'$ $T = 135.48'$ $R = 500.00'$ SE = 05 RO = SEE PLANS Vdes = 30 MPH	PI Sta 19+14.43 $\Delta = 12^\circ 13' 29.5''$ (LT) $D = 19^\circ 05' 54.9''$ $L = 64.01'$ $T = 32.13'$ $R = 300.00'$ Vdes = 30 MPH
---	--	---

- 1 JUDY LEWIS - NO CLAIM
- 2 ROBERT WHEELER - NO CLAIM
- 3 JAMES MAHAFFEY
- 4
- 5 LARRY FARMER
- 6 ELZIE HAM - NO CLAIM
- 7 CHESTER FARMER
- 8 EARL WOODS - NO CLAIM
- 9
- 10 EARL WOODS - NO CLAIM
- 11 EDDIE FARMER
- 12 LAUREL VOTING HOUSE - NO CLAIM
ASHE COUNTY

