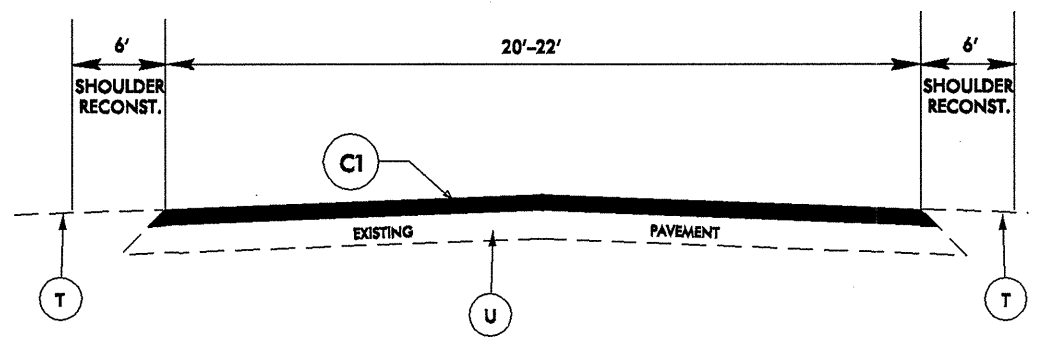


C20170

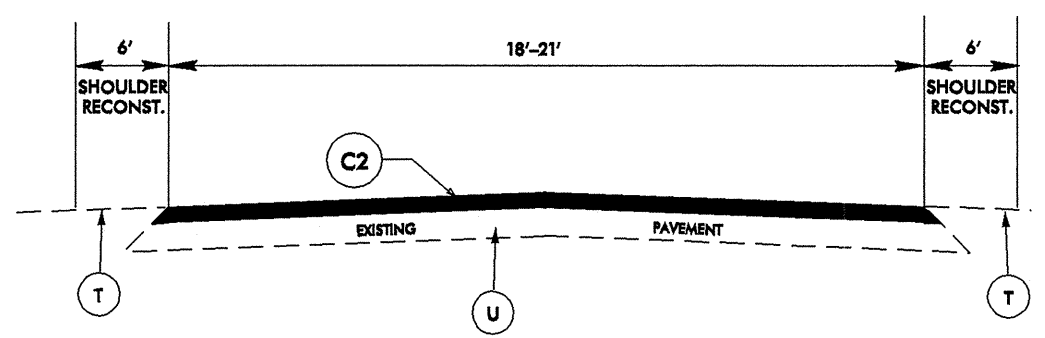
PROJECT NO.	SHEET NO.	TOTAL NO.
8.CR10631.6, 8CR.20631.6	1	7

SUMMARY OF QUANTITIES

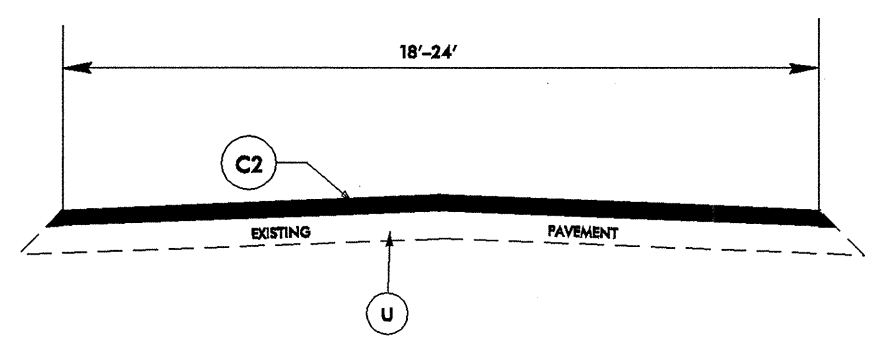
PROJECT NO	COUNTY	MAP NO	ROUTE	DESCRIPTION	TYP NO	LENGTH MI	WIDTH FT	INCIDENTAL STONE BASE TONS	SHOULDER RECONSTRUCTION SMI	INCIDENTAL MILLING SY	SURFACE COURSE, S9.5B TONS	PG 64-22 PLANT MIX TONS	ADJ. OF MANHOLES EA	ADJ. OF METER OR VALVE BOX EA	SEED & MULCHING AC		
8.CR10631.6	Moore	1	NC 73	FROM NC 211 TO SR 1125	1	4	20-22	20	8	103	8,210	493			6.00		
		2	NC 73	FROM SR 1125 TO MONTGOMERY COUNTY LINE	2	2.1	18-21	11	4.2	34	2,184	131			3.00		
		3	NC 2-EBL	FROM END OF CONCRETE ISLAND AT TRAFFIC CIRCLE TO NC 22	3	3.57	20	18		90	3,905	234	1	1			
		4	NC 2-WBL	FROM END OF CONCRETE ISLAND AT TRAFFIC CIRCLE TO NC 22	3	3.57	20	18		90	3,905	234					
TOTAL FOR PROJ NO. 8.CR10631.6						13.24		67	12.2	317	18,204	1,092	1	1	9.00		
8CR.20631.6	Moore	5	SR 1261	FROM SR 1210 TO SR 1265	3	2.13	18	11		60	1,998	120					
		6	SR 2036	FROM END C & G TO SR 2074	3	1.55	24	8		80	1,935	116	10	1			
		7	SR 2105	FROM SR 2080 TO SR 2036	3	0.56	13	3		60	525	32	8	10			
		8	SR 1270	FROM SR 1210 TO EQUESTRIAN LN(PRIVATE)	3	1.92	20	10		67	1,999	120					
		9	SR 1122	FROM NC 73 TO BRIDGE #25	3	1.76	20	9		178	1,833	110					
		10	SR 1803	FROM WCL OF VASS TO OAKWOOD ROAD	3	0.6	20	3		67	625	37					
		11	SR 1803	FROM OAKWOOD ROAD TO US 1 BUSINESS	4	0.19	48	1		160	473	28					
		12	SR 1275	FROM SR 1002 TO SR 1428	3	2.2	20	11		67	2,291	137					
		13	SR 1125	FROM NC 73 TO NC 73 (LOOP RD)	3	0.38	18	6		60	360	22					
		14	SR 1126	FROM SR 1125 TO SR 1137	3	1.57	18	8		60	1,475	89					
		15	SR 2017	FROM NC 690 TO HARNETT CO LINE	3	2.36	18	12		60	2,215	133					
		TOTAL FOR PROJ NO. 8CR.20631.6						15.22		82	0	919	15,729	944	18	11	
		GRAND TOTAL						28.46		149	12.2	1,236	33,933	2,036	19	12	9.00



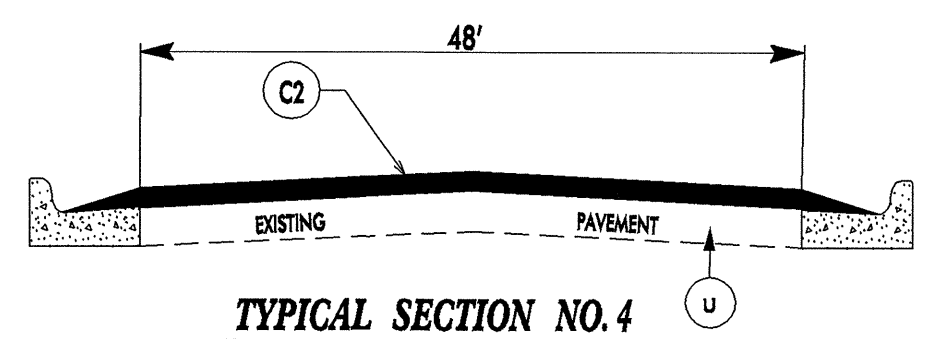
TYPICAL SECTION NO. 1



TYPICAL SECTION NO. 2



TYPICAL SECTION NO. 3



TYPICAL SECTION NO. 4

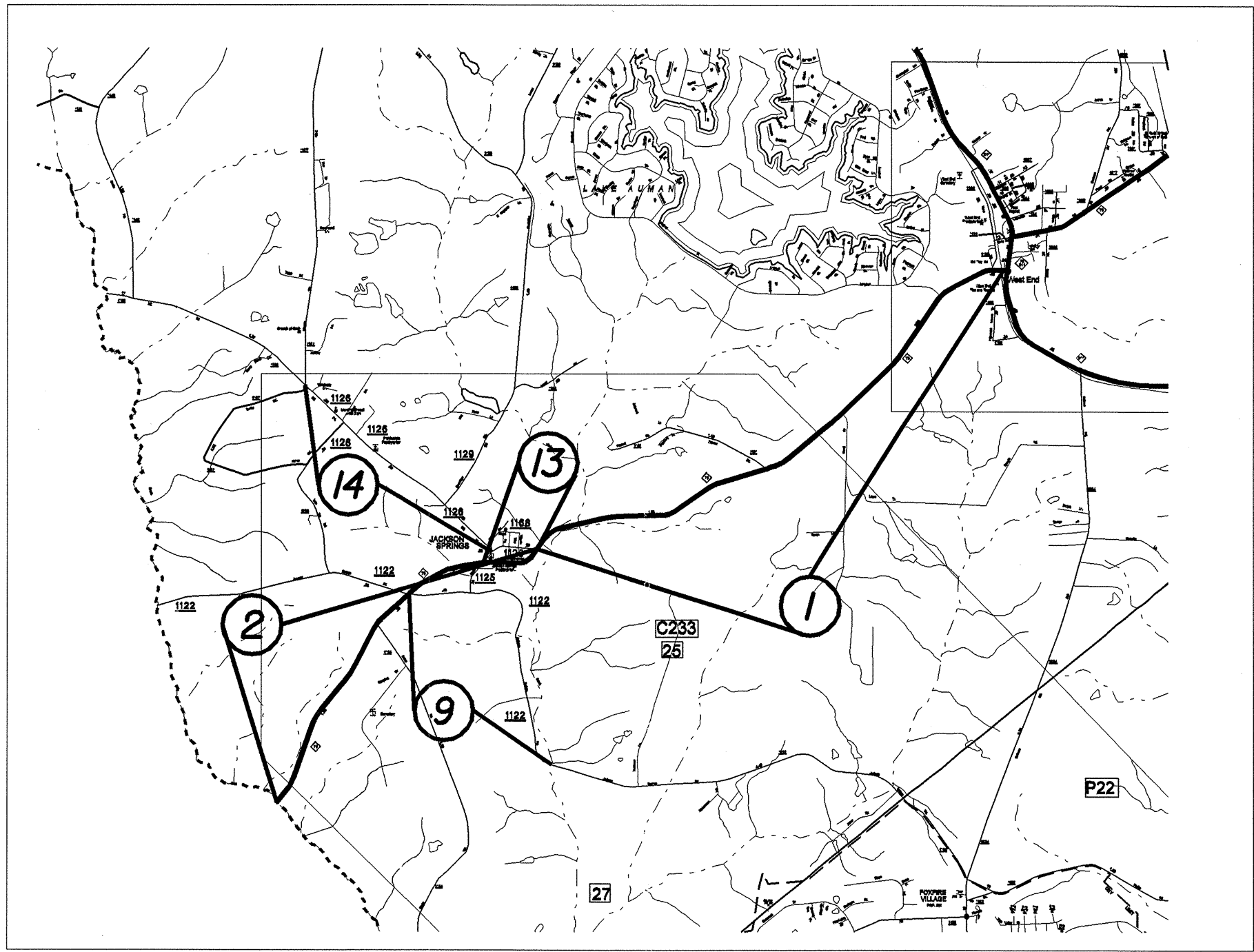
PAVEMENT SCHEDULE	
C1	PROP. APPROX. 3.0" ASPHALT CONC. SURFACE COURSE, TYPE S9.5B, AT AN AVERAGE RATE OF 168 LBS. PER SQ. YD. IN EACH OF TWO LAYERS
C2	PROP. APPROX. 1.5" ASPHALT CONC. SURFACE COURSE, TYPE S9.5B, AT AN AVERAGE RATE OF 168 LBS. PER SQ. YD.
T	EARTH MATERIAL
U	EXISTING PAVEMENT

0408957

27-NOV-2006 08:40
 \contracts\projects\2006\08-40\08-40.dgn
 8\6c-106514\08-40.dgn

WBS ELEMENT	SHEET NO.
SCR.10491.4, SCR.20491.4	4

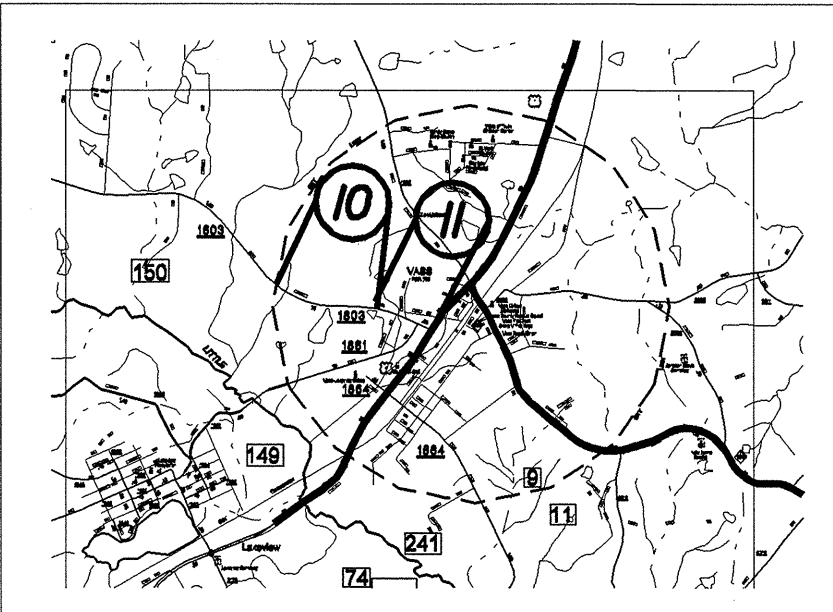
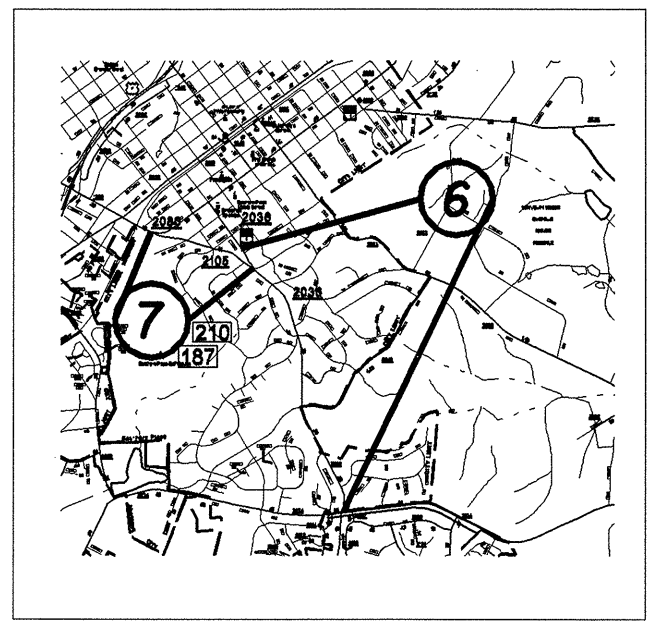
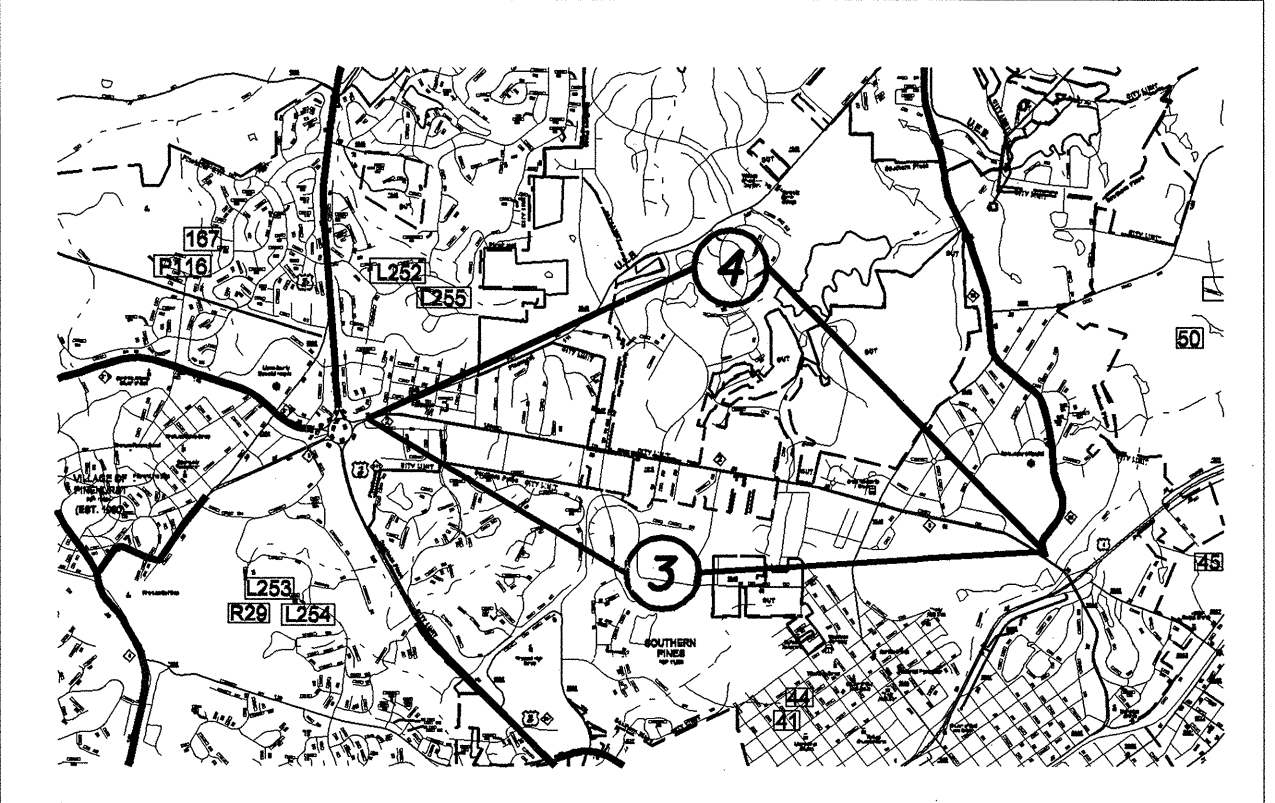
MOORE CO.



04/03/97

\\contracts\contract\working\1122\1122.dwg 01/08/2006 12:34:58

MOORE CO.



049397

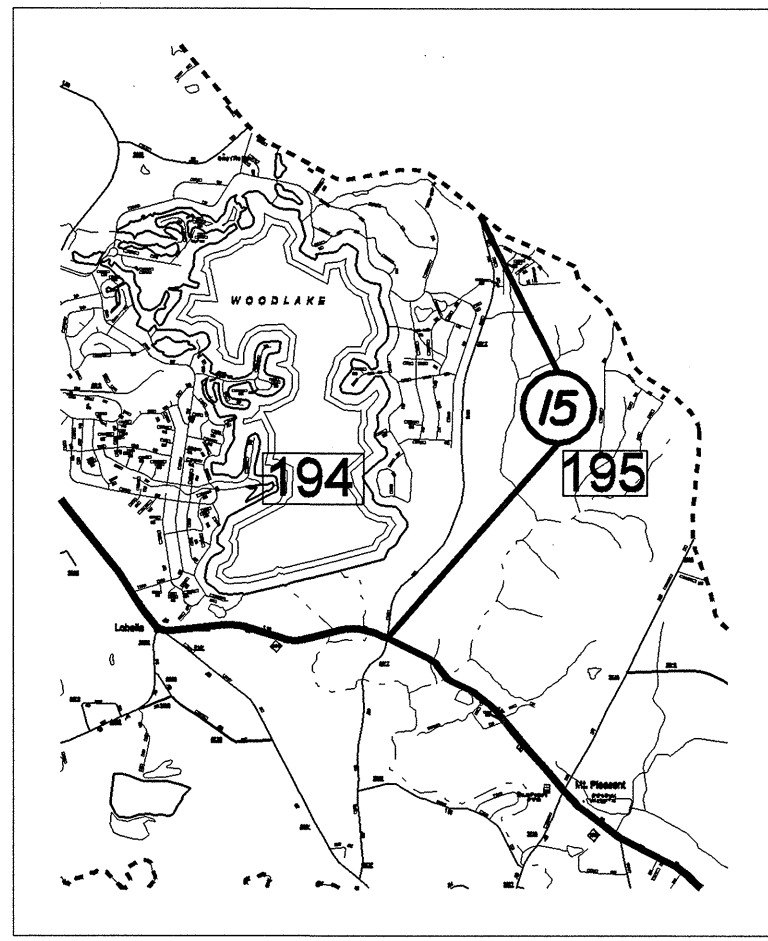
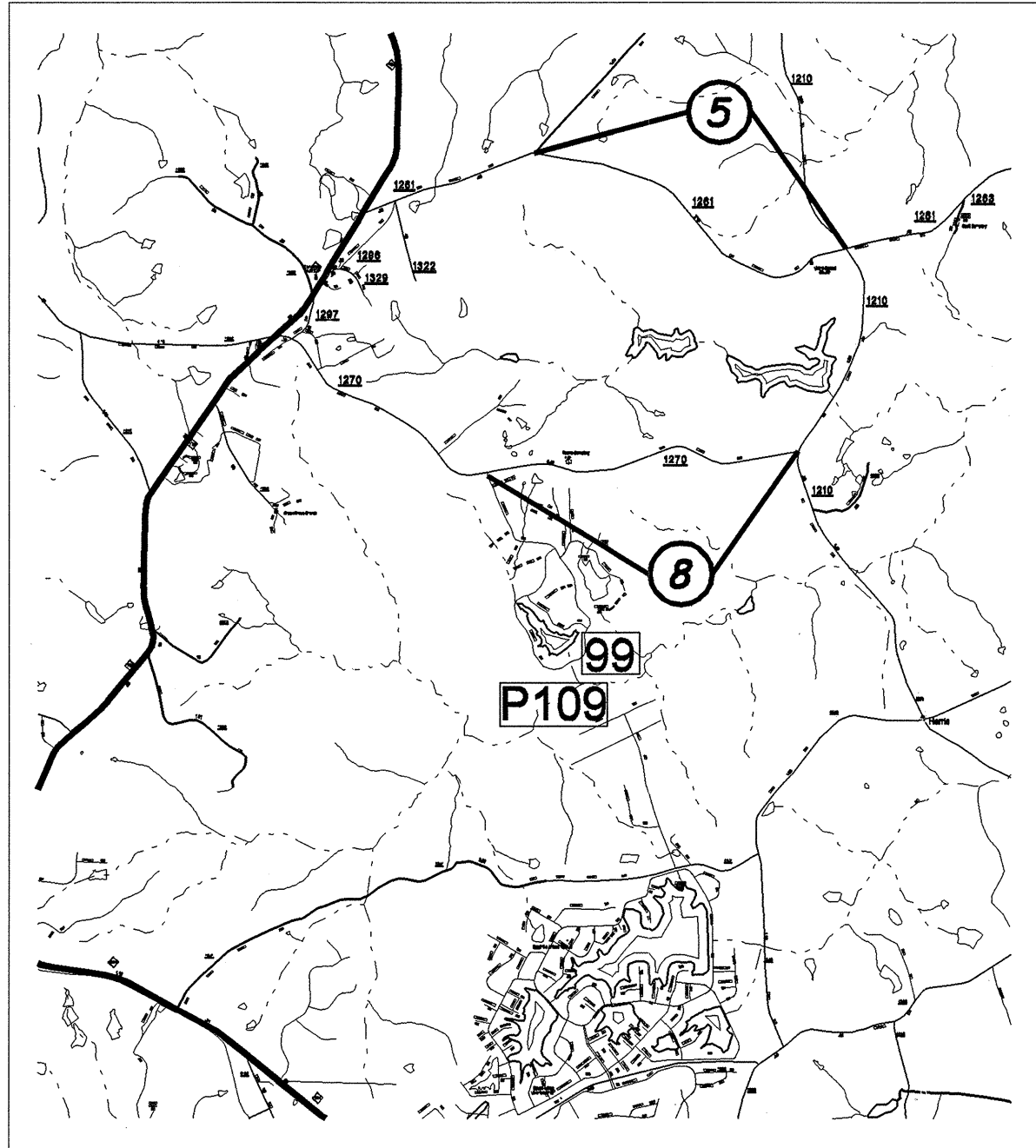
6-NOV-2006 15:35
 c:\projects\aveer\aveer\division 8\bor-10631.6\moore-submittal\moore.dgn

846397

\\projects\contracts\vegas\refining\116316\moore-submittal\moore.dgn
11-NOV-2006 15:17
Created by 116316

MOORE CO.

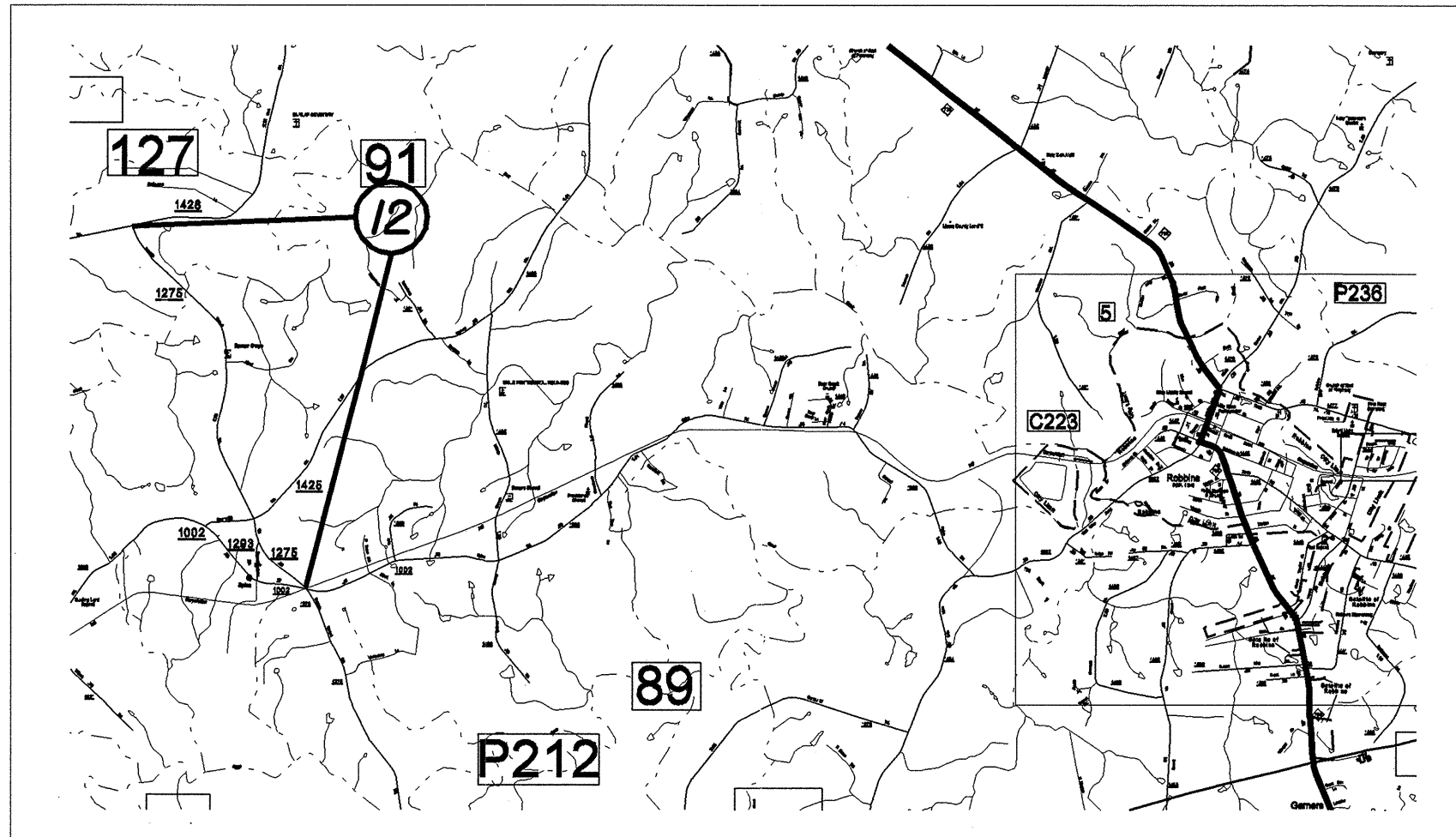
WBS ELEMENT	SHEET NO.
SCR.10681.6, SCR.10681.6	6



04037

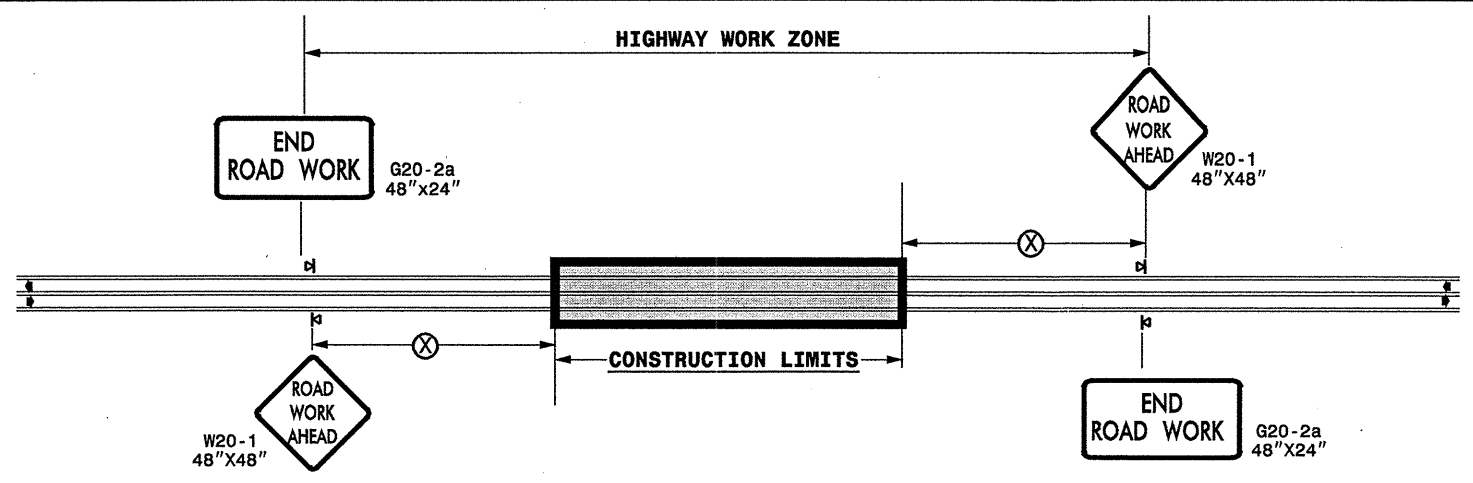
VMS ELEMENT	SHEET NO.
SCL104814, SCL204814	7

MOORE CO.



at\contracts\contract\12-NOV-2006_031
D:\projects\12-NOV-2006_031\12-NOV-2006_031.dwg

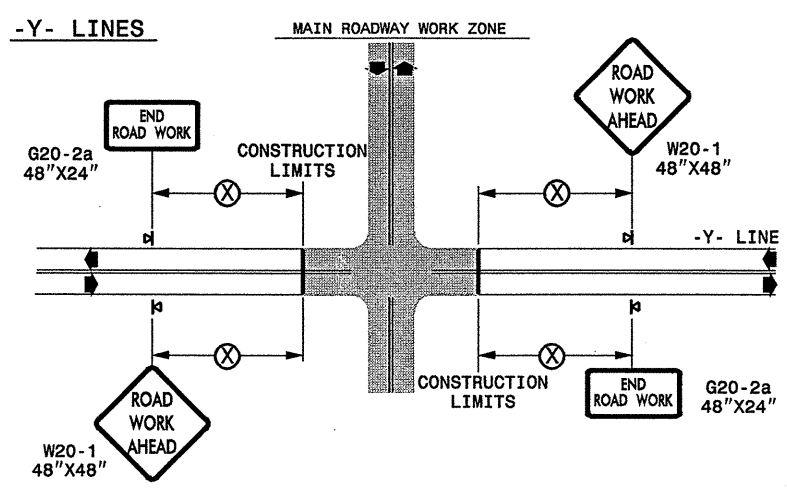
TWO-WAY UNDIVIDED ** (L-LINES)



POSTED SPEED LIMIT (M.P.H.)	RECOMMENDED MINIMUM SIGN SPACING
≤ 50	500'
≥ 55	1000'

STATE OF NORTH CAROLINA
DEPT. OF TRANSPORTATION
DIVISION OF HIGHWAYS
RALEIGH, N.C.

ROADWAYS INTERSECTING ALONG 2 WAY UNDIVIDED WORK ZONE (Y-LINES)



DETAIL DRAWING
FOR TWO-WAY UNDIVIDED
WORK ZONE WARNING SIGNS

GENERAL NOTES

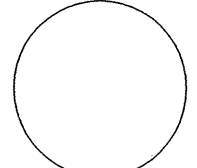

- USE FLUORESCENT ORANGE SHEETING (TYPE VII OR HIGHER) ON ALL ADVANCED WORK ZONE SIGNS.
- DO NOT INSTALL ADVANCE WARNING SIGNS MORE THAN 3 DAYS PRIOR TO BEGINNING OF WORK.
- ALL SIGN SPACING DIMENSIONS ARE APPROXIMATE, FIELD ADJUST AS NECESSARY OR AS DIRECTED.
- USE PORTABLE WORK ZONE SIGNS ONLY WITH PORTABLE WORK ZONE SIGN STANDS SPECIFICALLY DESIGNED FOR ONE ANOTHER. PORTABLE WORK ZONE SIGNS MAY BE ROLL UP OR APPROVED COMPOSITE.
- PROVIDE PORTABLE WORK ZONE SIGN STANDS, PORTABLE SIGNS AND SIGN SHEETING WHICH ARE LISTED ON THE NORTH CAROLINA DEPARTMENT OF TRANSPORTATION'S APPROVED PRODUCT LIST OR ACCEPTED AS TRAFFIC QUALIFIED BY THE TRAFFIC CONTROL UNIT.
- ** TWO-WAY UNDIVIDED ADVANCE WARNING SIGN CONFIGURATION MAY BE USED ON URBAN MULTI-LANE FACILITIES WHERE CONDITIONS LIMIT THE USE OF DUAL MOUNTED SIGNS AS DETERMINED BY THE ENGINEER.

LEGEND

◀ PORTABLE SIGN

➡ DIRECTION OF TRAFFIC FLOW

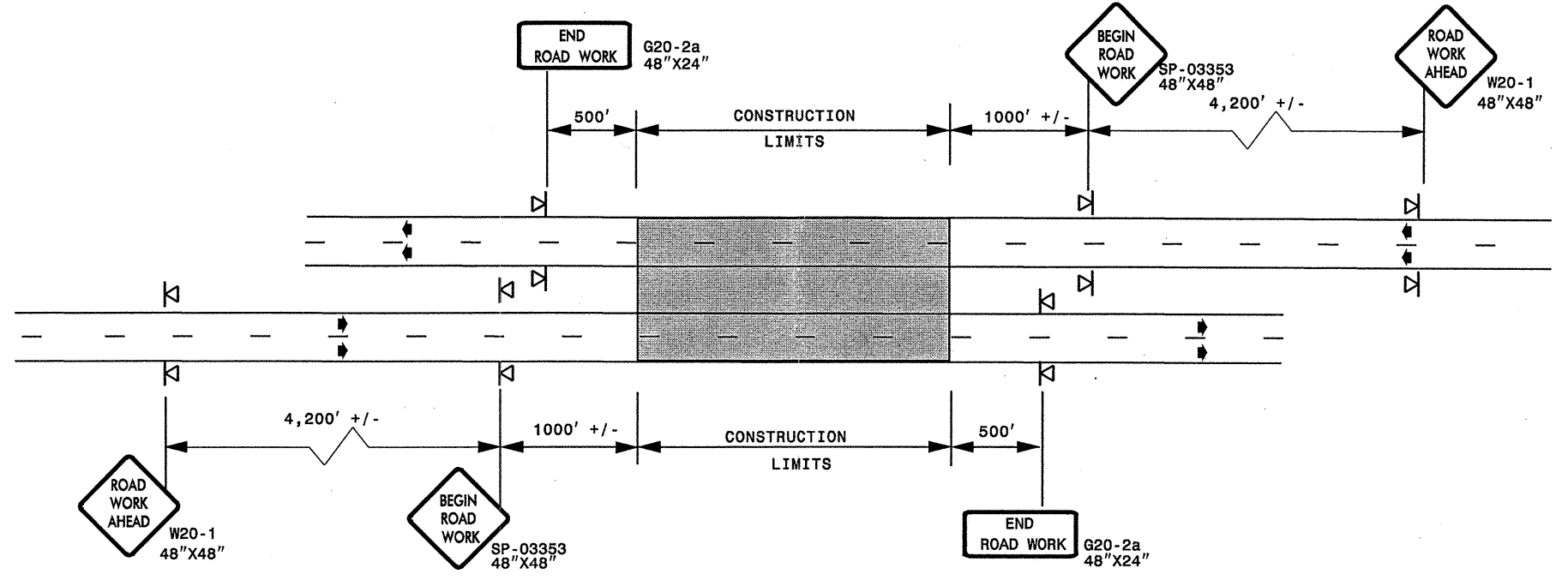
SHEET 1 OF 1

APPROVED: _____	DATE: _____	DETAIL DRAWING FOR TWO-WAY UNDIVIDED ADVANCED WORK ZONE WARNING SIGNS	
SEAL 			
SCALE: NONE		REVISIONS	
DATE: _____		7-98	10/01
DWG. BY: _____		10-98	03/04
DESIGN BY: _____		01/01	11/04
REVIEWED BY: _____			

22-NOV-2006 17:38
 \\ADOT\DFSROOT\GROUPS-WZTCCC\designgroup\resurfacing\resurfacing2006\div08\8cr106316etcmoore\8cr106316-2wayundivurbfrwysjuly2006.dgn
 pseymore AT WZTC206427

ADVANCED WORK ZONE WARNING SIGNING FOR FREEWAYS (4 LANES OR GREATER)

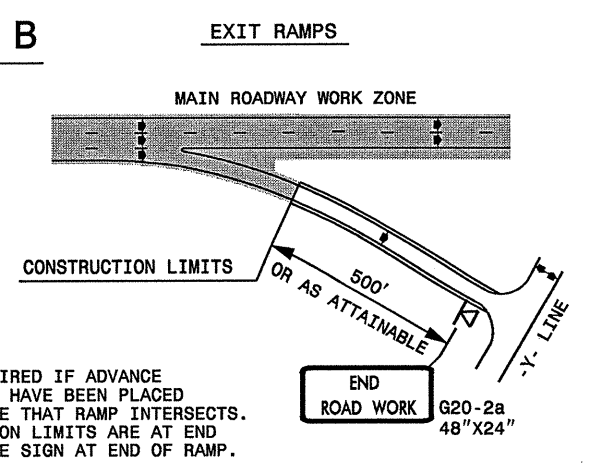
DETAIL A



STATE OF NORTH CAROLINA
DEPT. OF TRANSPORTATION
DIVISION OF HIGHWAYS
RALEIGH, N.C.

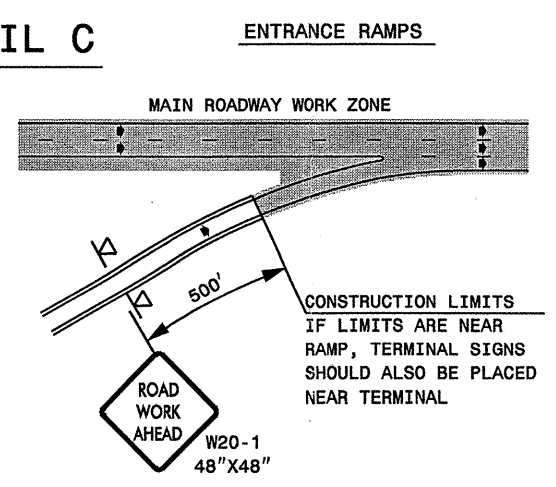
ROADWAYS INTERSECTING ALONG FREEWAY WORK ZONE (Y-LINES)

DETAIL B



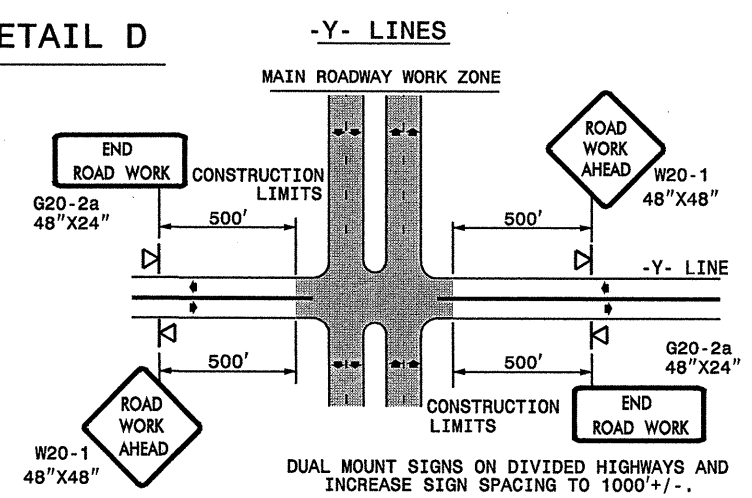
NOTE:
SIGN NOT REQUIRED IF ADVANCE WARNING SIGNS HAVE BEEN PLACED ALONG -Y- LINE THAT RAMP INTERSECTS. IF CONSTRUCTION LIMITS ARE AT END OF RAMP, PLACE SIGN AT END OF RAMP.

DETAIL C



CONSTRUCTION LIMITS IF LIMITS ARE NEAR RAMP, TERMINAL SIGNS SHOULD ALSO BE PLACED NEAR TERMINAL

DETAIL D



DUAL MOUNT SIGNS ON DIVIDED HIGHWAYS AND INCREASE SIGN SPACING TO 1000'+/-.

**DETAIL DRAWING
FOR FREEWAYS
WORK ZONE WARNING SIGNS
(SHORT-DURATION LANE CLOSURES)**


GENERAL NOTES

- USE FLUORESCENT ORANGE SHEETING (TYPE VII OR HIGHER) ON ALL ADVANCED WORK ZONE SIGNS.
- DO NOT INSTALL ADVANCE WARNING SIGNS MORE THAN 3 DAYS PRIOR TO BEGINNING OF WORK.
- ALL SIGN SPACING DIMENSIONS ARE APPROXIMATE, FIELD ADJUST AS NECESSARY OR AS DIRECTED.
- USE PORTABLE WORK ZONE SIGNS ONLY WITH PORTABLE WORK ZONE SIGN STANDS SPECIFICALLY DESIGNED FOR ONE ANOTHER. PORTABLE WORK ZONE SIGNS MAY BE ROLL UP OR APPROVED COMPOSITE.
- PROVIDE PORTABLE WORK ZONE SIGN STANDS, PORTABLE SIGNS AND SIGN SHEETING WHICH ARE LISTED ON THE NORTH CAROLINA DEPARTMENT OF TRANSPORTATION'S APPROVED PRODUCT LIST OR ACCEPTED AS TRAFFIC QUALIFIED BY THE TRAFFIC CONTROL UNIT.
- ** TWO-WAY UNDIVIDED ADVANCE WARNING SIGN CONFIGURATION MAY BE USED ON MULTI-LANE FACILITIES WHERE CONDITIONS LIMIT THE USE OF DUAL MOUNTED SIGNS AS DETERMINED BY THE ENGINEER.

LEGEND

◀ PORTABLE SIGN

➔ DIRECTION OF TRAFFIC FLOW

APPROVED: _____ DATE: _____	DETAIL DRAWING FOR FREEWAYS WORK ZONE WARNING SIGNS									
SEAL	SCALE: NONE	<table border="1"> <tr> <th colspan="2">REVISIONS</th> </tr> <tr> <td>7-98</td> <td>10/01</td> </tr> <tr> <td>10-98</td> <td>03/04</td> </tr> <tr> <td>01/01</td> <td>11/04</td> </tr> </table>	REVISIONS		7-98	10/01	10-98	03/04	01/01	11/04
	REVISIONS									
	7-98		10/01							
	10-98		03/04							
01/01	11/04									
DESIGN BY: _____										
REVIEWED BY: _____										

22-NOV-2006 17:33 \\dot\p\5r00101\p\groups\wz\ccc\designgroup4\resurfacing\resurfacing2006\div08\8cr106316freeway4lanesgreatjuly2006.dgn

SP 03353

SIGN NUMBER: SP-03353 TYPE: A QUANTITY: 1 SIGN WIDTH: 4'-0" HEIGHT: 4'-0" TOTAL AREA: 16.0 Sq.Ft. BORDER TYPE: FLUSH RECESS: 0.59" WIDTH: 0.75" RADII: 1.38" NO. Z BARS: N/A LENGTH: N/A	BACKG COLOR: Fluorescent Orange COPY COLOR: Black DESIGN BY: CL DOWNEY PROJECT ID: ALL PROJECTS CHECKED BY: CHECKED DIV: DIV STD #: W20-1 DATE: Aug 20,2003
---	--

SYMBOL	X	Y	WID	HT

BORDER
R=1.38"
TH=0.75"
IN=0.59"

Letter positions table:

Letter spacings are to start of next letter										Series/Size	Text Length
22.4	5.3	4.6	5.4	2.5	3.8	22.4				C7	21.6
23.4	5	5.2	5.6	3.8	23.4					C7	19.6
22.6	6.4	5.6	5.2	4	22.6					C7	21.2

Spacing Factor is 1 unless specified otherwise
FILENAME: SPEC18A4X NORTH CAROLINA D.O.T. SIGN DETAIL

STATE OF NORTH CAROLINA
DEPT. OF TRANSPORTATION
DIVISION OF HIGHWAYS
RALEIGH, N.C.

DETAIL DRAWING FOR
WORK ZONE SIGNS
BEGIN ROAD WORK

GENERAL NOTES FOR SIGN SP-03353 "BEGIN ROAD WORK"

- SIGN SP-03353 "BEGIN ROAD WORK" ONLY APPLIES TO FULL CONTROL AND PARTIAL CONTROL OF ACCESS ROADWAYS
- WHEN USED, INSTALL SIGN SP-03353 "BEGIN ROAD WORK" ACCORDING TO DETAIL FOR FREEWAY WORK ZONE SIGNS

APPROVED: _____ DATE: _____	DETAIL DRAWING FOR ADVANCED WORK ZONE WARNING SIGN DESIGNS	
SEAL 	SCALE: NONE	REVISIONS
	DATE: 08/03	04/04
	DWG. BY:	11/04
	DESIGN BY:	
REVIEWED BY:		COPY FILE

22-NOV-2006 17:39
 \\DDOT\DF-SR00101\groups-wz\TCCC\designgroup\resur-facing\resur-facing2006\div08\8cr106316etcmoore\8CR106316SignDesignsJuly2006.dgn
 pseymore AT WZTC206421