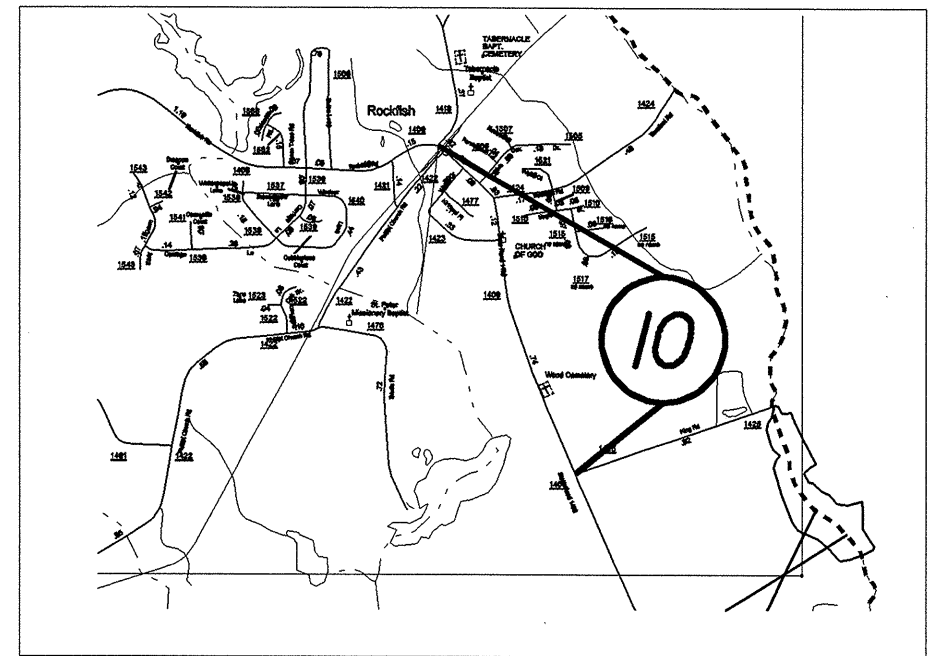
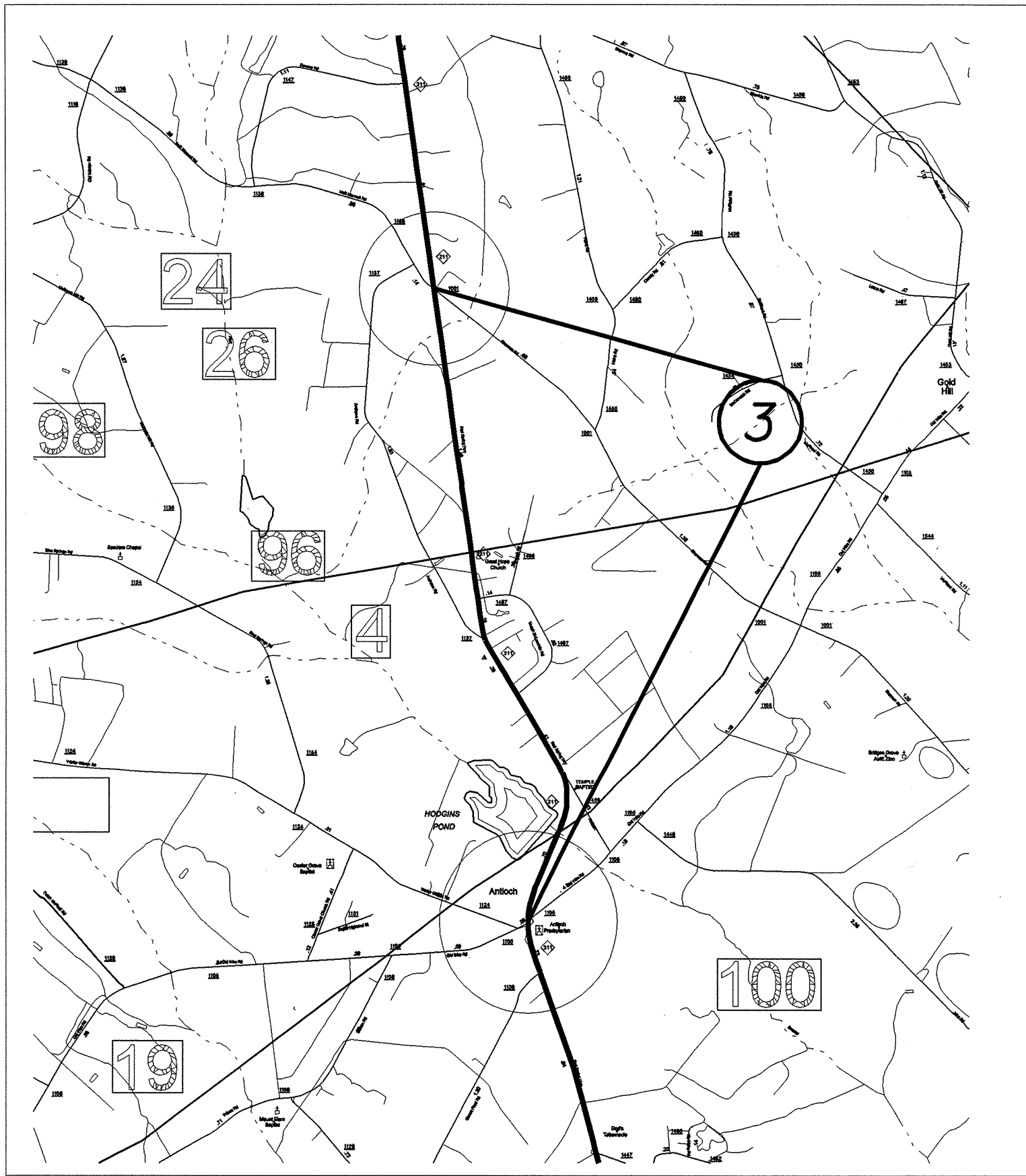
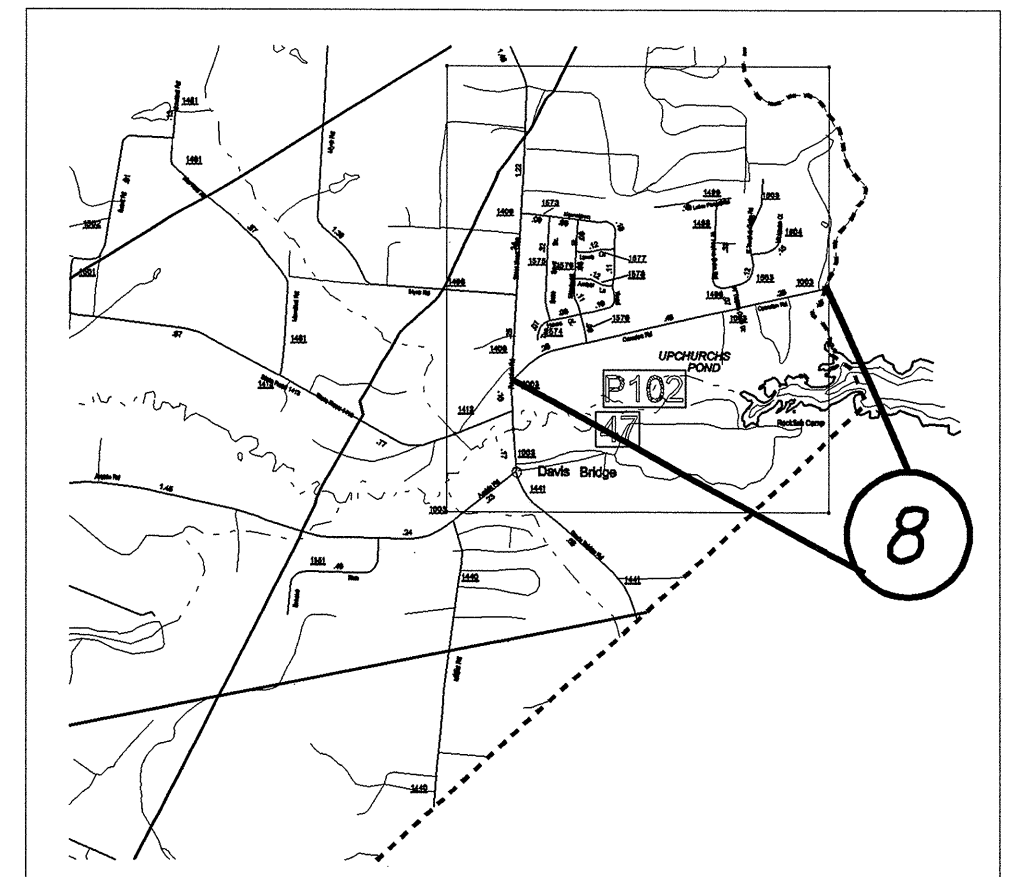


HOKE CO.



HOKE CO.



PLANNING & ENGINEERING
 1100 N. W. 11th St.
 Ft. Lauderdale, FL 33304
 Phone: (305) 555-1100
 Fax: (305) 555-1101
 Website: www.planning-engineering.com

PROJECT NO.	SHEET NO.	TOTAL NO.
8CR.10471.6, 8CR.20471.6	5	6

SUMMARY OF QUANTITIES

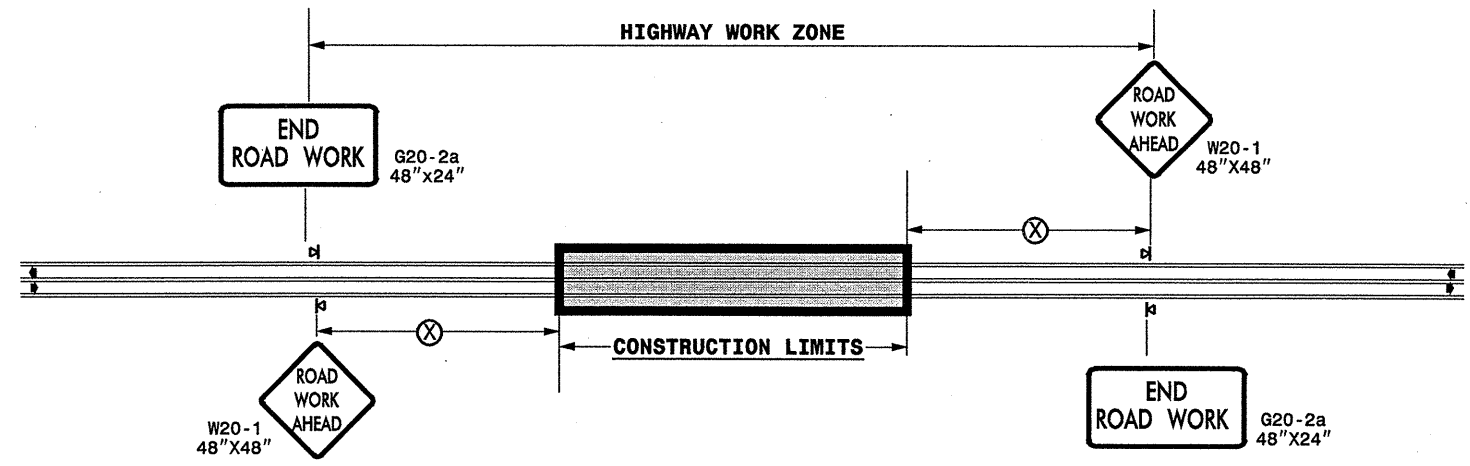
PROJECT NO	COUNTY	MAP NO	ROUTE	DESCRIPTION	TYP NO	LENGTH MI	WIDTH FT	INCIDENTAL STONE BASE TONS	SHOULDER RECONSTRUCTION SMI	INCIDENTAL MILLING SY	SURFACE COURSE, S9.5B TONS	SURFACE COURSE, S9.5C TONS	PG 64-22 PLANT MIX TONS	PG 70-22 PLANT MIX TONS	ADJ. OF MANHOLES EA	ADJ. OF METER OR VALVE BOX EA	SEED & MULCHING AC
8CR.10471.6	Hoke	1	US 401 NBL	FROM US 401 BUS. TO SR 1346	1	0.57	28		1.14	100		1,150		69	1		0.83
		2	US 401 NBL	FROM SR 1346 TO CUMBERLAND CO. LINE	2	5.47	28		10.94	100		8,830		530	1		7.96
		3	NC 211	FROM SR 1001 TO SR 1105	3	3	22		6	100	3467		208				4.36
TOTAL FOR PROJ NO. 8CR.10471.6						9.04			18.08	300	3467	9,980	208	599	2		13.15
8CR.20471.6	Hoke	4	SR 1244	FROM NC 211 TO END OF THREE LANE SECTION	4	0.22	38			63	433		26				
		5	SR 1244	FROM END OF THREE LANE TO 401 BYPASS	4	0.8	24			40	971		58			3	
		6	SR 1149	FROM 401 BYPASS TO NC 211 SOUTH OF RAEFORD	4	1.16	28	6		93	1628		98			1	
		7	SR 1214	FROM SR 1228 TO MOORE COUNTY LINE	4	1.7	22	9		73	1950		117				
		8	SR 1003	FROM SR 1406 TO CUMBERLAND COUNTY LINE	4	0.81	22	4		73	930		56				
		9	SR 1317	FROM US 401 TO SR 1305	4	0.59	20	3		67	615		37				
		10	SR 1406	FROM SR 1418 TO SR 1425	4	0.95	20	5		267	1002		60				
TOTAL FOR PROJ NO. 8CR.20471.6						6.23		27	0	676	7529		452			4	
GRAND TOTAL						15.27		27	18.08	976	10996	9,980	660	599	2	4	13.15

PROJECT NO.	SHEET NO.	TOTAL NO.
8CR.10471.6, 8CR.20471.6	6	6

THERMOPLASTIC AND PAINT QUANTITIES

PROJECT NO	COUNTY	MAP NO	ROUTE	DESCRIPTION	4685000000-E		4686000000-E		4697000000-E		4705000000-E	4710000000-E	4721000000-E		4725000000-E			4810000000-E		4900000000-N			
					4" X 90 M WHITE THERMO LF	4" X 90 M YELLOW THERMO LF	4" X 120 M WHITE THERMO LF	4" X 120 M YELLOW THERMO LF	8" X 120 M WHITE THERMO LF	8" X 120 M YELLOW THERMO LF	16" X 120 M WHITE THERMO LF	24" X 120 M WHITE THERMO LF	THERMO MSG SCHOOL 120 M EA	THERMO RXR 120 M EA	THERMO LT ARROW 90 M EA	THERMO STR ARROW 90 M EA	THERMO RT ARROW 90 M EA	THERMO STR & RT ARROW 90 M EA	4" WHITE PAINT LF	4" YELLOW PAINT LF	YELLOW & YELLOW MARKERS EA	CYAN & RED MARKERS EA	
8CR.10471.6	Hoke	1	US 401 NBL	FROM US 401 BUS. TO SR 1346	2,800	2,400	1,200	500	455	52			118	6		2	16	3			50	50	
		2	US 401 NBL	FROM SR 1346 TO CUMBERLAND CO. LINE	26,000	29,500	14,820	973					40			54	136	14				365	
		3	NC 211	FROM SR 1001 TO SR 1105	30,900			15,000					42									265	45
TOTAL FOR PROJ NO. 8CR.10471.6					59,700	31,900	16,020	16,473	455	52		200	6		56	152	17			315	460		
					91,600		32,493		507				6		225						775		
8CR.20471.6	Hoke	4	SR 1244	FROM NC 211 TO END OF THREE LANE SECTION	2,282			2,100		300			50	6		10			2			50	
		5	SR 1244	FROM END OF THREE LANE TO 401 BYPASS	8,400			8,363					50	6									53
		6	SR 1149	FROM 401 BYPASS TO NC 211 SOUTH OF RAEFORD	12,383			9,435				150	300		6								77
		7	SR 1214	FROM SR 1228 TO MOORE COUNTY LINE																		33,556	15,704
		8	SR 1003	FROM SR 1406 TO CUMBERLAND COUNTY LINE	8,560			6,850															112
		9	SR 1317	FROM US 401 TO SR 1305																		12,488	12,488
		10	SR 1406	FROM SR 1418 TO SR 1425	10,000			9,270			120		100			1	2	1					75
TOTAL FOR PROJ NO. 8CR.20471.6					41,625		36,018	420	150	500	12	6	11	2	1	2	2	46,044	28,192	367			
					41,625		36,018	420	150	500	18	6	16	16	18	2	2	46,044	28,192	367			
GRAND TOTAL					101,325	31,900	16,020	52,491	455	472	150	700	18	6	67	154	18	2	46,044	28,192	682	460	
					133,225		68,511	927				24		241				74,236		1,142			

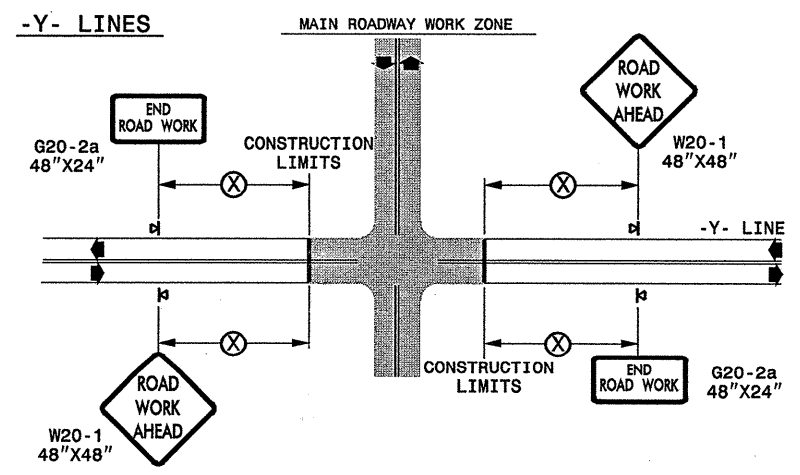
TWO-WAY UNDIVIDED ** (L-LINES)



POSTED SPEED LIMIT (M.P.H.)	RECOMMENDED MINIMUM SIGN SPACING
≤ 50	500'
≥ 55	1000'

STATE OF NORTH CAROLINA
DEPT. OF TRANSPORTATION
DIVISION OF HIGHWAYS
RALEIGH, N.C.

ROADWAYS INTERSECTING ALONG 2 WAY UNDIVIDED WORK ZONE (Y-LINES)



GENERAL NOTES

- USE FLUORESCENT ORANGE SHEETING (TYPE VII OR HIGHER) ON ALL ADVANCED WORK ZONE SIGNS.
- DO NOT INSTALL ADVANCE WARNING SIGNS MORE THAN 3 DAYS PRIOR TO BEGINNING OF WORK.
- ALL SIGN SPACING DIMENSIONS ARE APPROXIMATE, FIELD ADJUST AS NECESSARY OR AS DIRECTED.
- USE PORTABLE WORK ZONE SIGNS ONLY WITH PORTABLE WORK ZONE SIGN STANDS SPECIFICALLY DESIGNED FOR ONE ANOTHER. PORTABLE WORK ZONE SIGNS MAY BE ROLL UP OR APPROVED COMPOSITE.
- PROVIDE PORTABLE WORK ZONE SIGN STANDS, PORTABLE SIGNS AND SIGN SHEETING WHICH ARE LISTED ON THE NORTH CAROLINA DEPARTMENT OF TRANSPORTATION'S APPROVED PRODUCT LIST OR ACCEPTED AS TRAFFIC QUALIFIED BY THE TRAFFIC CONTROL UNIT.
- ** TWO-WAY UNDIVIDED ADVANCE WARNING SIGN CONFIGURATION MAY BE USED ON URBAN MULTI-LANE FACILITIES WHERE CONDITIONS LIMIT THE USE OF DUAL MOUNTED SIGNS AS DETERMINED BY THE ENGINEER.

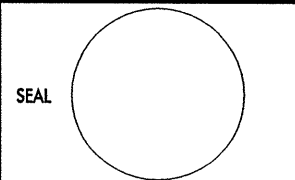

LEGEND

◀ PORTABLE SIGN

➡ DIRECTION OF TRAFFIC FLOW

DETAIL DRAWING
FOR TWO-WAY UNDIVIDED
WORK ZONE WARNING SIGNS

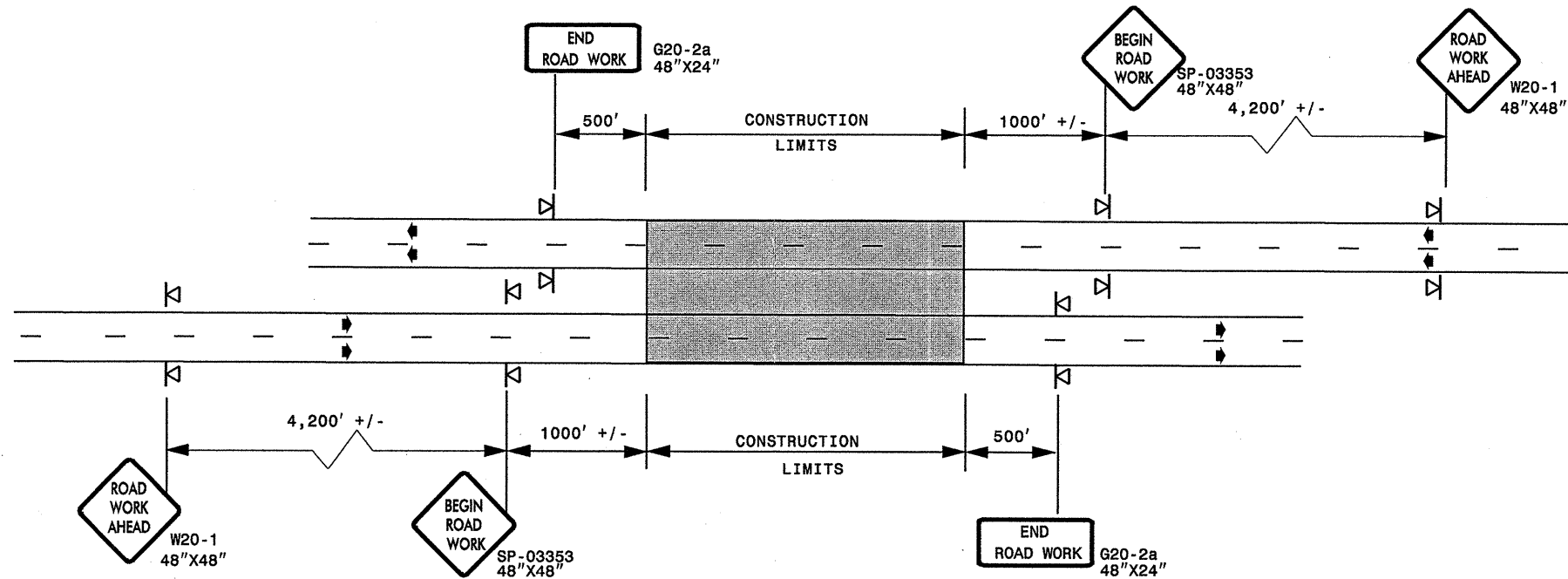
SHEET 1 OF 1

APPROVED: _____	DATE: _____	DETAIL DRAWING FOR TWO-WAY UNDIVIDED ADVANCED WORK ZONE WARNING SIGNS	
			
SCALE: NONE		REVISIONS	
DATE: _____		7-98	10/01
DWG. BY: _____		10-98	03/04
DESIGN BY: _____		01/01	11/04
REVIEWED BY: _____			

22-NOV-2006 17:00
 \\DOT\DFSROOT\TONGROUPS\WZTCCC\design\group4\resurfacing\resurfacing2006\dlv08\8cr104716etchoke\8cr104716_2wayundivurbfr.wys\july2006.dgn
 pseymore AT WZTC206427

ADVANCED WORK ZONE WARNING SIGNING FOR FREEWAYS (4 LANES OR GREATER)

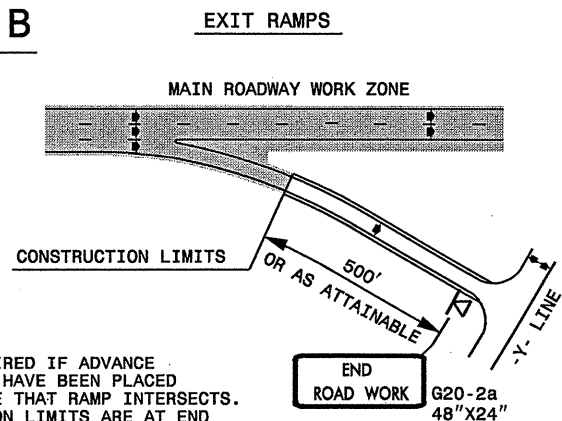
DETAIL A



STATE OF NORTH CAROLINA
DEPT. OF TRANSPORTATION
DIVISION OF HIGHWAYS
RALEIGH, N.C.

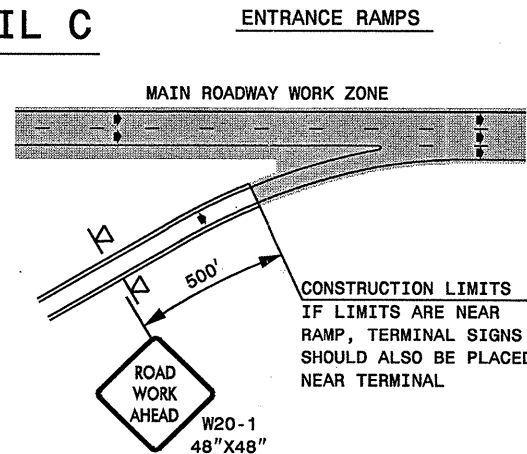
ROADWAYS INTERSECTING ALONG FREEWAY WORK ZONE (Y-LINES)

DETAIL B



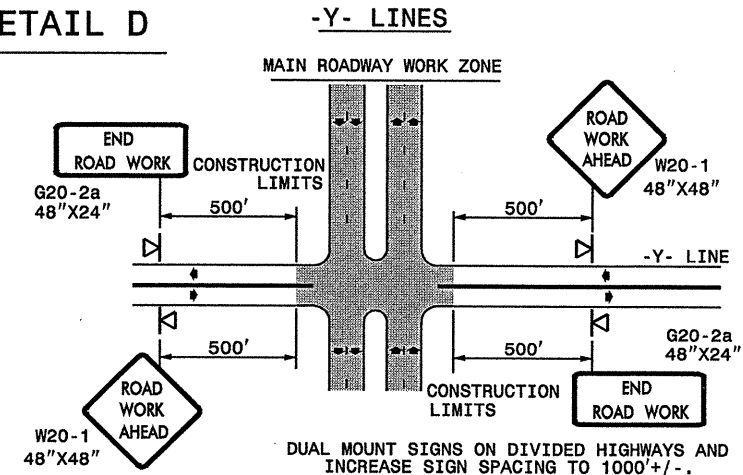
NOTE:
SIGN NOT REQUIRED IF ADVANCE WARNING SIGNS HAVE BEEN PLACED ALONG -Y- LINE THAT RAMP INTERSECTS. IF CONSTRUCTION LIMITS ARE AT END OF RAMP, PLACE SIGN AT END OF RAMP.

DETAIL C



CONSTRUCTION LIMITS IF LIMITS ARE NEAR RAMP, TERMINAL SIGNS SHOULD ALSO BE PLACED NEAR TERMINAL

DETAIL D



DUAL MOUNT SIGNS ON DIVIDED HIGHWAYS AND INCREASE SIGN SPACING TO 1000'+/-.

GENERAL NOTES

- USE FLUORESCENT ORANGE SHEETING (TYPE VII OR HIGHER) ON ALL ADVANCED WORK ZONE SIGNS.
- DO NOT INSTALL ADVANCE WARNING SIGNS MORE THAN 3 DAYS PRIOR TO BEGINNING OF WORK.
- ALL SIGN SPACING DIMENSIONS ARE APPROXIMATE, FIELD ADJUST AS NECESSARY OR AS DIRECTED.
- USE PORTABLE WORK ZONE SIGNS ONLY WITH PORTABLE WORK ZONE SIGN STANDS SPECIFICALLY DESIGNED FOR ONE ANOTHER. PORTABLE WORK ZONE SIGNS MAY BE ROLL UP OR APPROVED COMPOSITE.
- PROVIDE PORTABLE WORK ZONE SIGN STANDS, PORTABLE SIGNS AND SIGN SHEETING WHICH ARE LISTED ON THE NORTH CAROLINA DEPARTMENT OF TRANSPORTATION'S APPROVED PRODUCT LIST OR ACCEPTED AS TRAFFIC QUALIFIED BY THE TRAFFIC CONTROL UNIT.
- ** TWO-WAY UNDIVIDED ADVANCE WARNING SIGN CONFIGURATION MAY BE USED ON MULTI-LANE FACILITIES WHERE CONDITIONS LIMIT THE USE OF DUAL MOUNTED SIGNS AS DETERMINED BY THE ENGINEER.

LEGEND

- ◁ PORTABLE SIGN
- ➔ DIRECTION OF TRAFFIC FLOW

**DETAIL DRAWING
FOR FREEWAYS
WORK ZONE WARNING SIGNS
(SHORT-DURATION LANE CLOSURES)**

SHEET 1 OF 1

APPROVED: _____	DATE: _____	DETAIL DRAWING FOR FREEWAYS WORK ZONE WARNING SIGNS	
SEAL	SCALE: NONE	REVISIONS	
	DATE:	7-98	10/01
	DESIGN BY:	10-98	03/04
	REVIEWED BY:	01/01	11/04

22-NOV-2006 17:01 \\DOT\DFS\root\GROUPTS-WZTCCC\design\group4\resurfacing\resurfacing2006\div08\8cr104716\free4lanes\creat-july2006.dgn pseymore . AT WZTC206427

