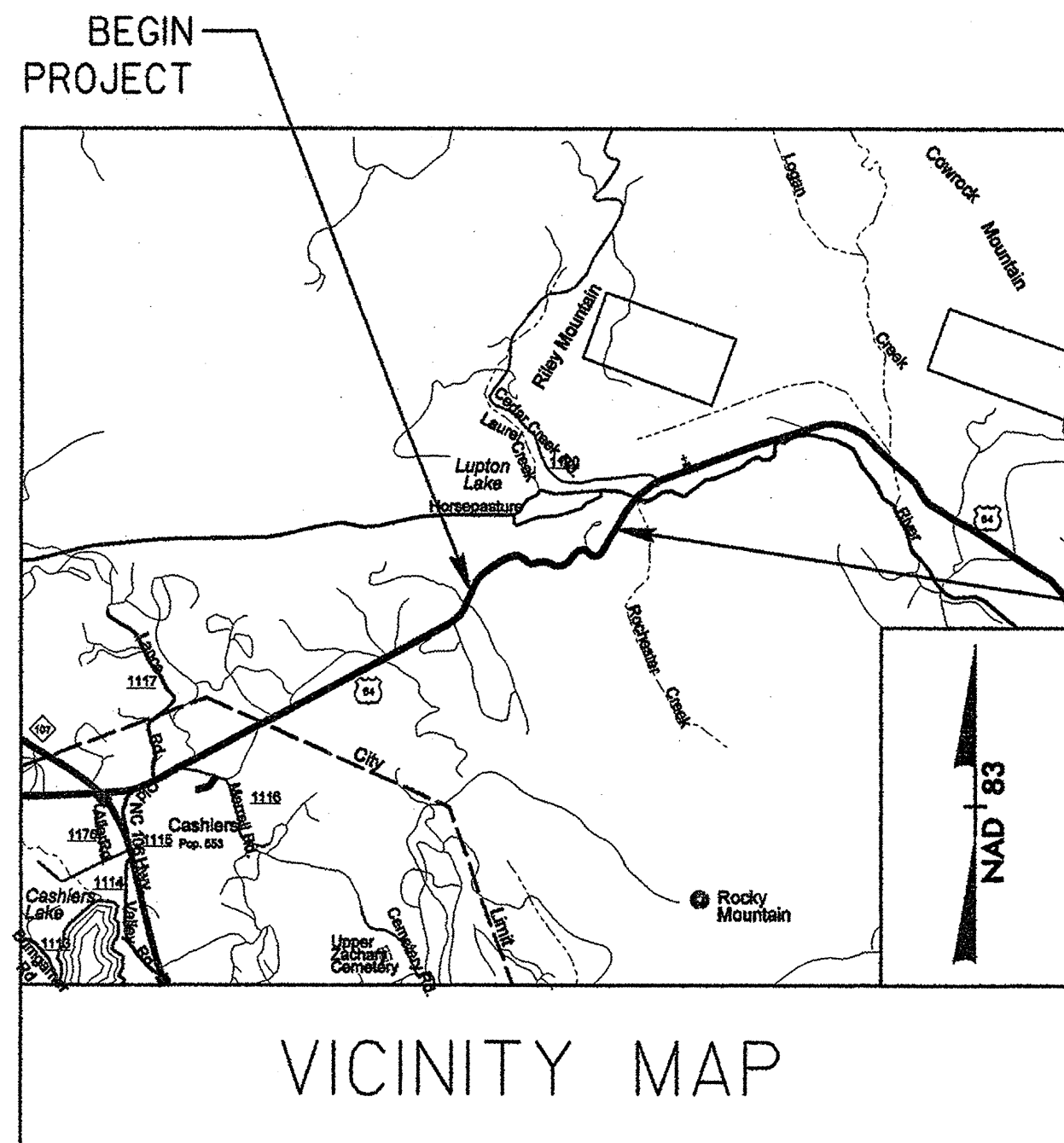


**TIP PROJECT: R-2409B**

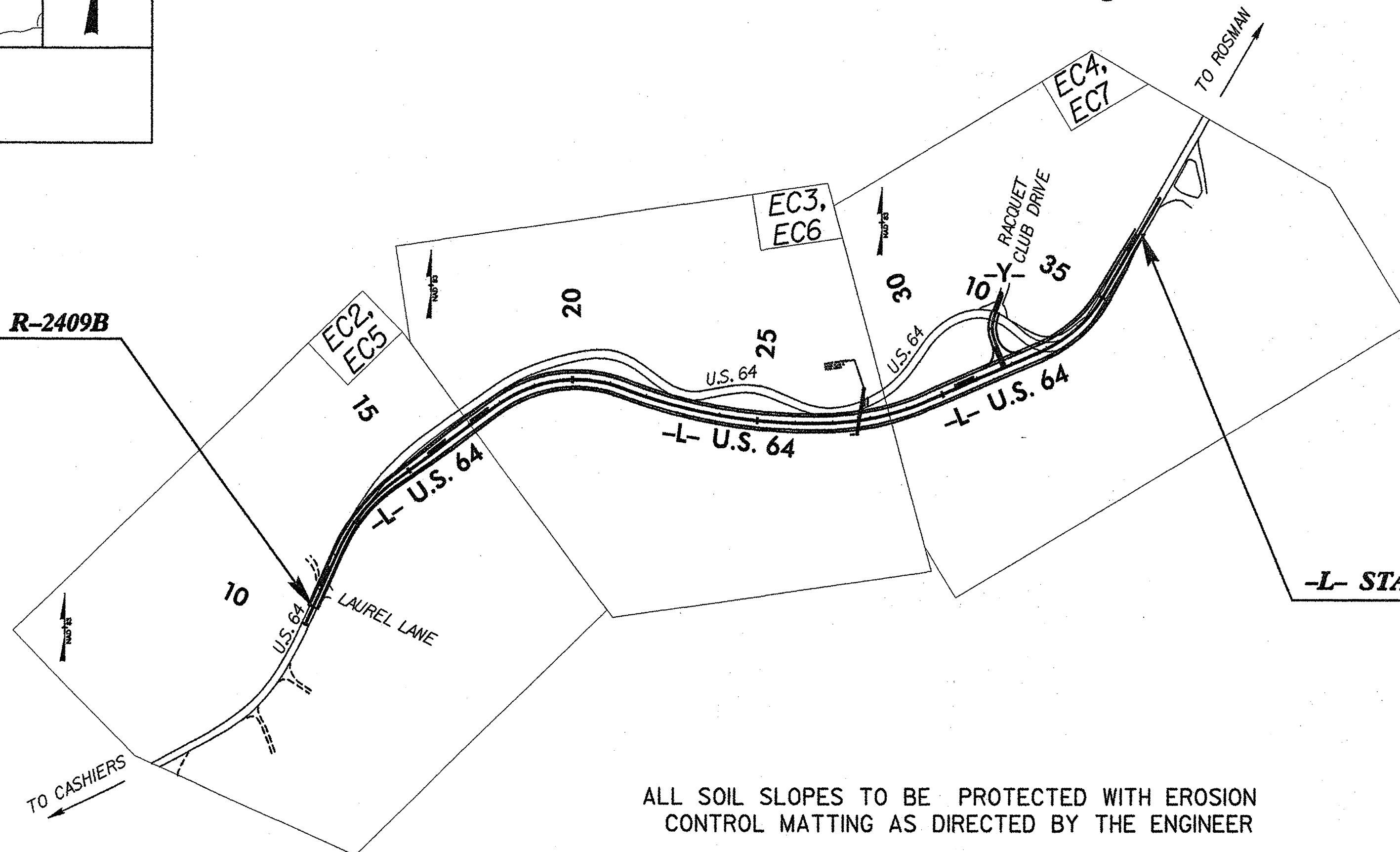
STATE OF NORTH CAROLINA  
 DIVISION OF HIGHWAYS  
 PLAN FOR PROPOSED  
 HIGHWAY EROSION CONTROL

**LOCATION: U.S. 64 East of Cashiers**

**TYPE OF WORK: Grading, Pavement, Drainage, Guardrail,  
 Pavement Markers and Markings**



-L- STA 10+50.00 BEGIN PROJECT R-2409B



-L- STA 37+00.00 END PROJECT R-2409B

ALL SOIL SLOPES TO BE PROTECTED WITH EROSION  
 CONTROL MATTING AS DIRECTED BY THE ENGINEER

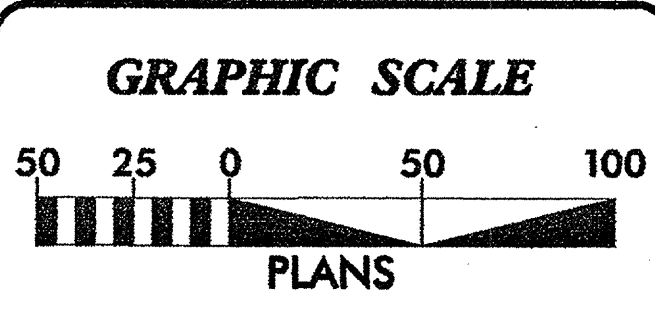
STATE	STATE PROJECT REFERENCE NO.	SHEET NO.	TOTAL SHEETS
N.C.	R-2409B	EC-1	
STATE PROJ. NO.	P.A. PROJ. NO.	DESCRIPTION	

**EROSION AND SEDIMENT CONTROL MEASURES**

Std. #	Description	Symbol
	Reforestation	
1630.03	Temporary Silt Ditch	
1630.05	Temporary Diversion	
1605.01	Temporary Silt Fence	
1606.01	Special Sediment Control Fence	
1622.01	Temporary Berms and Slope Drains	
1630.01	Riser Basin	
1630.02	Silt Basin Type B	
1633.01	Temporary Rock Silt Check Type-A	
1635.02	Temporary Rock Silt Check Type-B	
1634.01	Temporary Rock Sediment Dam Type-A	
1634.02	Temporary Rock Sediment Dam Type-B	
1635.01	Rock Pipe Inlet Sediment Trap Type-A	
1635.02	Rock Pipe Inlet Sediment Trap Type-B	
1636.01	Rock Silt Screen	
1630.04	Stilling Basin	
	Rock Inlet Sediment Trap:	
1632.01	Type A	OR
1632.02	Type B	OR
1632.03	Type C	OR

THIS PROJECT CONTAINS  
 EROSION CONTROL PLANS  
 FOR CLEARING AND  
 GRUBBING PHASE OF  
 CONSTRUCTION.

NORTH CAROLINA  
 PROFESSIONAL ENGINEER  
 SEAL  
 26860  
 RICHARD M. SCHULTE  
 11/13/05



Plans Prepared for:  
**DIVISION OF HIGHWAYS**  
 2002 STANDARD SPECIFICATIONS

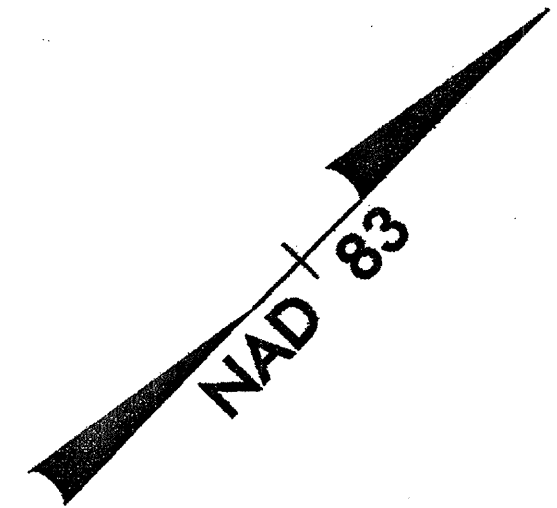
Plans Prepared by:  
  
**Vaughn & Melton**  
 Consulting Engineers  
 Middlesboro, Kentucky 40288-5000  
 Greenville, Tennessee 37430-9223  
 Asheville, North Carolina 28803-2796  
 Copyright © 2004 Vaughn & Melton, Inc. All Rights Reserved.

Roadway Standard Drawings

The following roadway English standards as appear in "Roadway Standard Drawings"- Roadway Design Unit - N. C. Department of Transportation - Raleigh, N. C., dated January 15, 2002 and the latest revision thereto are applicable to this project and by reference hereby are considered a part of these plans.

1605.01 Temporary Silt Fence	1632.01 Rock Inlet Sediment Trap Type A
1606.01 Special Sediment Control Fence	1632.03 Rock Inlet Sediment Trap Type C
1622.01 Temporary Berms and Slope Drains	1633.01 Temporary Rock Silt Check Type A
1630.01 Riser Basin	1633.02 Temporary Rock Silt Check Type B
1630.02 Silt Basin Type B	1634.01 Temporary Rock Sediment Dam Type A
1630.03 Temporary Silt Ditch	1634.02 Temporary Rock Sediment Dam Type B
1630.04 Stilling Basin	1635.01 Rock Pipe Inlet Sediment Trap Type A
1630.05 Temporary Diversion	1636.01 Rock Silt Screen

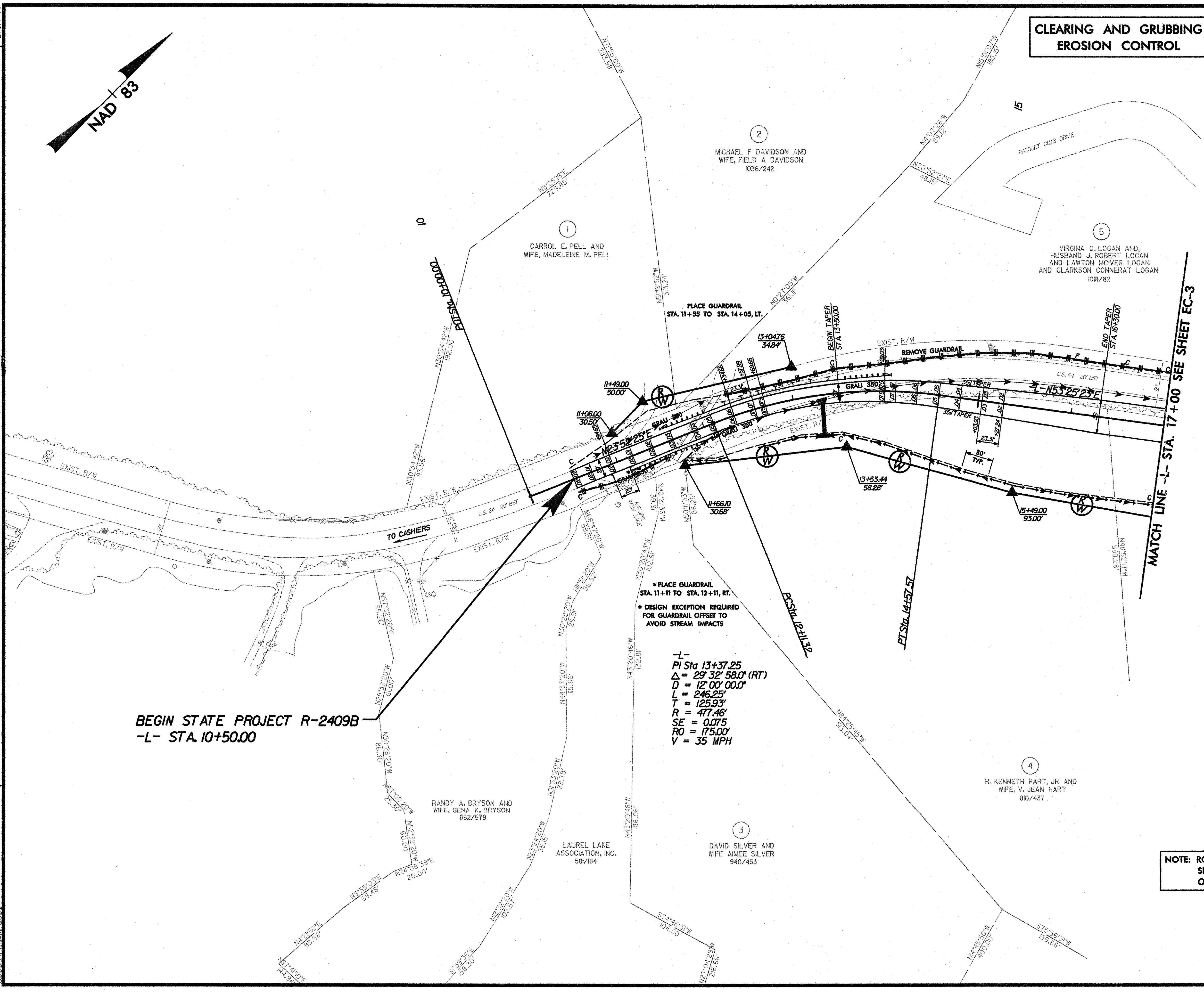
8/17/99



# CLEARING AND GRUBBING EROSION CONTROL

PROJECT REFERENCE NO. <b>R-2409B</b>	SHEET NO. <b>EC-2/CONST. 4</b>
RW SHEET NO.	
ROADWAY DESIGN ENGINEER 	HYDRAULICS ENGINEER

REVISIONS



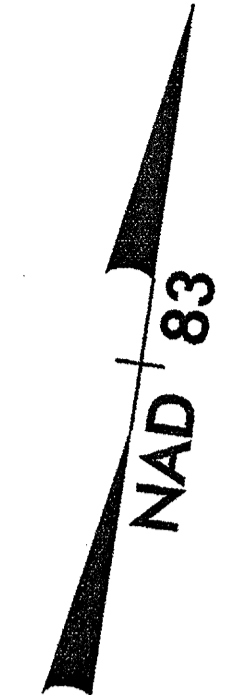
**BEGIN STATE PROJECT R-2409B**  
**-L- STA. 10+50.00**

**NOTE: ROCK SILT CHECKS SHALL BE SPACED AT 30 FT. O.C UNLESS OTHERWISE NOTED.**

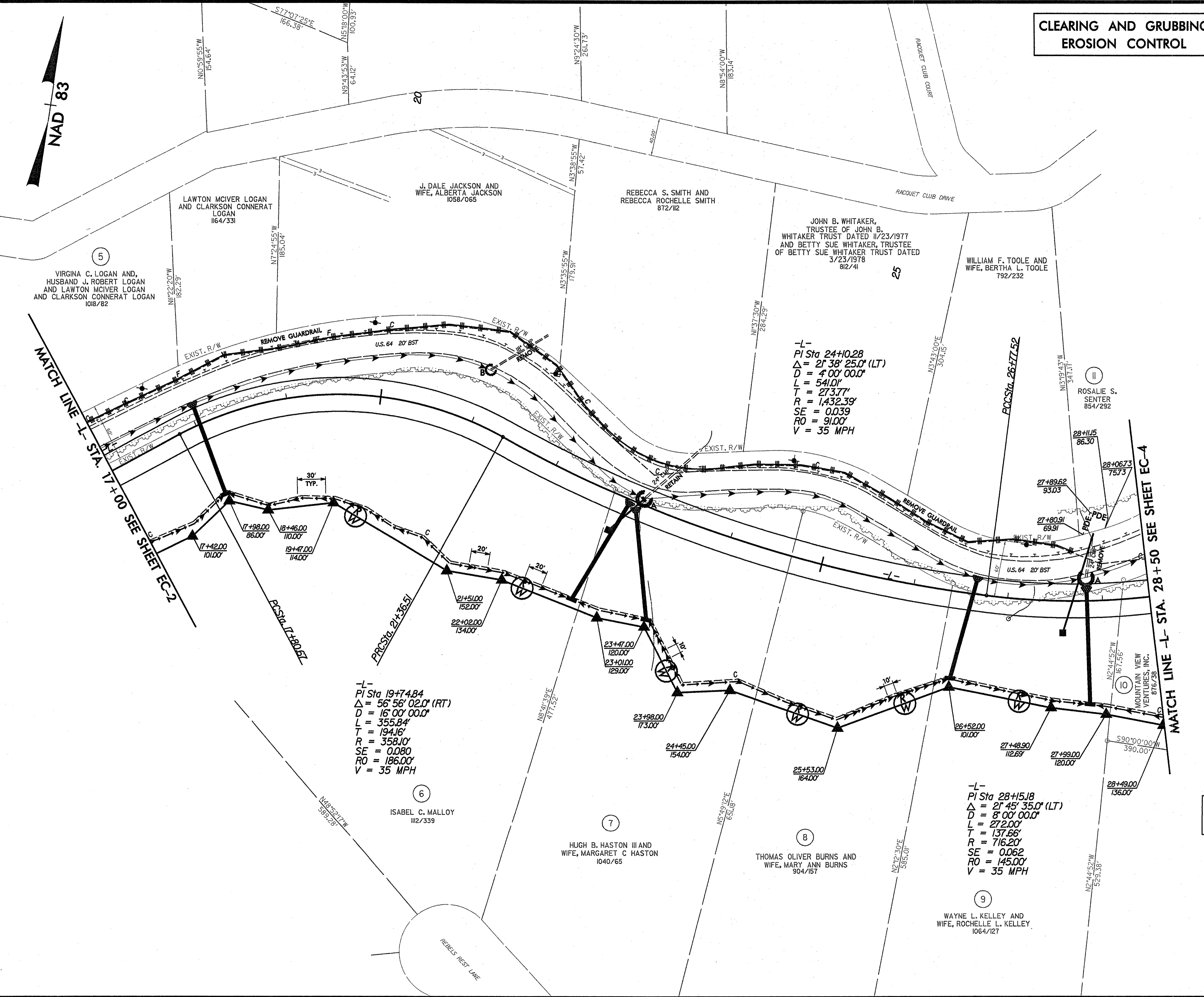
\*\*\*\*\*  
CYSTIME  
\*\*\*\*\*

PROJECT REFERENCE NO. <b>R-2409B</b>	SHEET NO. <b>EC-3/CONST.5</b>
RW SHEET NO.	
ROADWAY DESIGN ENGINEER <b>REBECCA M. SCHULTE</b> SEAL 26960 10/31/05	HYDRAULICS ENGINEER

**CLEARING AND GRUBBING  
EROSION CONTROL**



8/17/99



-L-  
PI Sta 24+10.28  
Δ = 21° 38' 25.0" (LT)  
D = 4' 00' 00.0"  
L = 541.0'  
T = 273.77'  
R = 1,432.39'  
SE = 0.039  
RO = 91.00'  
V = 35 MPH

-L-  
PI Sta 19+74.84  
Δ = 56° 56' 02.0" (RT)  
D = 16' 00' 00.0"  
L = 355.84'  
T = 194.16'  
R = 358.10'  
SE = 0.080  
RO = 186.00'  
V = 35 MPH

-L-  
PI Sta 28+15.18  
Δ = 21° 45' 35.0" (LT)  
D = 8' 00' 00.0"  
L = 272.00'  
T = 137.66'  
R = 716.20'  
SE = 0.062  
RO = 145.00'  
V = 35 MPH

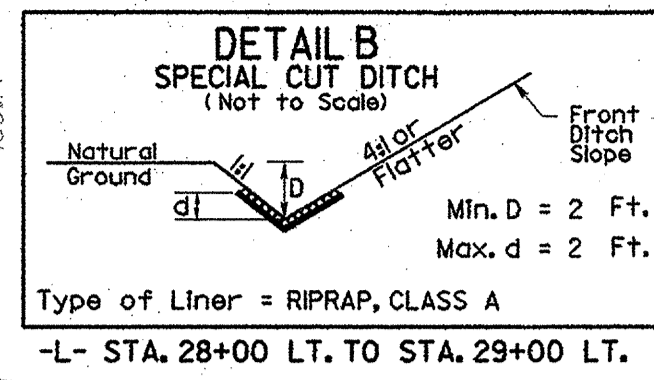
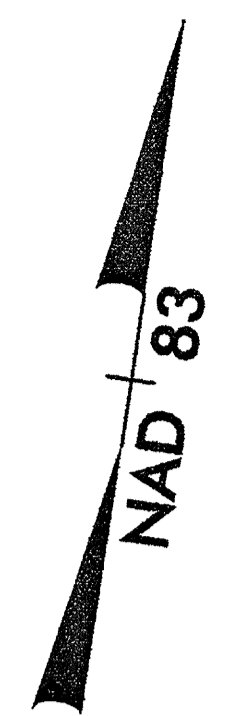
NOTE: ROCK SILT CHECKS SHALL BE SPACED AT 30 FT. O.C UNLESS OTHERWISE NOTED.

REVISIONS

\*\*\*\*\*  
SYSTEMS  
\*\*\*\*\*



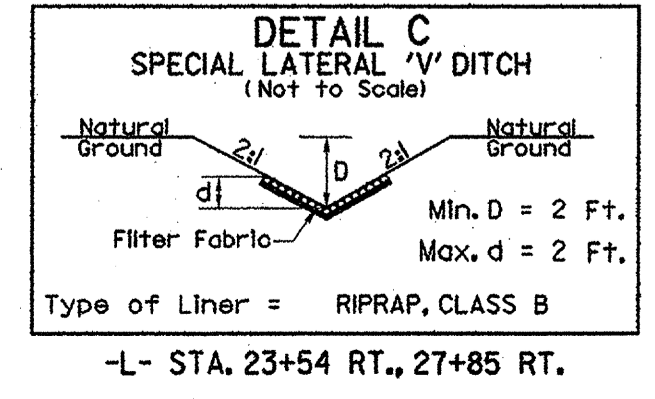




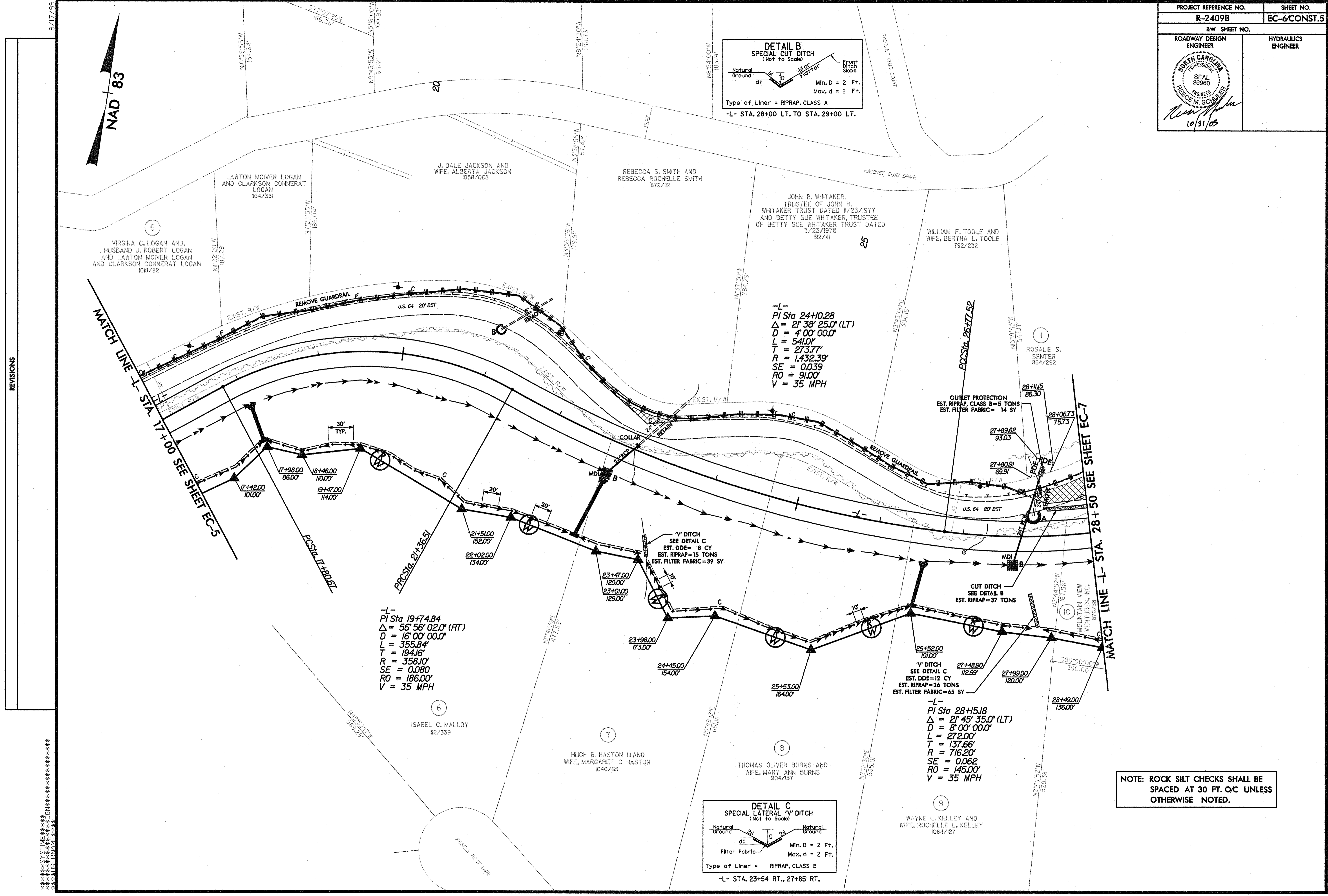
-L-  
PI Sta 24+10.28  
 $\Delta = 2^\circ 38' 25.0''$  (LT)  
D = 4' 00' 00.0"  
L = 541.0'  
T = 273.77'  
R = 1,432.39'  
SE = 0.039  
RO = 91.00'  
V = 35 MPH

-L-  
PI Sta 19+74.84  
 $\Delta = 56^\circ 56' 02.0''$  (RT)  
D = 16' 00' 00.0"  
L = 355.84'  
T = 194.16'  
R = 358.10'  
SE = 0.080  
RO = 186.00'  
V = 35 MPH

-L-  
PI Sta 28+15.18  
 $\Delta = 2^\circ 45' 35.0''$  (LT)  
D = 8' 00' 00.0"  
L = 272.00'  
T = 137.66'  
R = 716.20'  
SE = 0.062  
RO = 145.00'  
V = 35 MPH

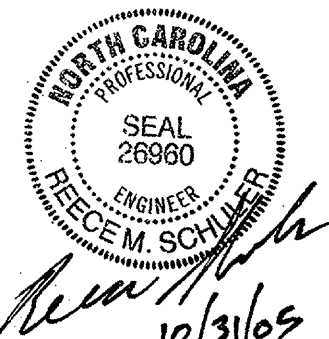


NOTE: ROCK SILT CHECKS SHALL BE SPACED AT 30 FT. O.C UNLESS OTHERWISE NOTED.

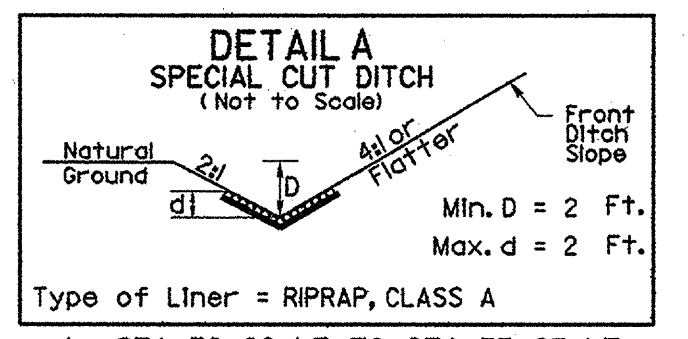


REVISIONS

8/17/99

PROJECT REFERENCE NO. <b>R-2409B</b>	SHEET NO. <b>EC-7/CONST.6</b>
R/W SHEET NO.	
ROADWAY DESIGN ENGINEER  REBECCA M. SCHULLER 10/31/09	HYDRAULICS ENGINEER

12  
CEDAR CREEK RACQUET CLUB, INC.  
770\506



- L- STA. 32+29 LT. TO STA. 33+25 LT.
- L- STA. 34+22 LT. TO STA. 36+50 LT.
- L- STA. 34+75 RT. TO STA. 32+91 RT.
- L- STA. 33+50 RT. TO STA. 37+00 RT.
- Y- STA. 10+70 LT./RT. TO STA. 11+31 LT./RT.

MCKEE DEVELOPMENT, INC.  
193/79

-Y-  
PI Sta 10+947.2  
 $\Delta = 43^{\circ} 50' 02.0''$  (LT)  
D = 57' 17" 44.8"  
L = 76.50'  
T = 40.23'  
R = 100.00'

END CONSTRUCTION  
-Y- STA. 10+48

MATCH LINE -L- STA. 28+50 SEE SHEET EC-6

-L- STA. 31+80.00=  
-Y- STA. 12+00.00

56 x 28 x 8  
16' weir

CUT DITCH SEE DETAIL A  
EST. RIPRAP=43 TONS

CUT DITCH SEE DETAIL A  
EST. RIPRAP=46 TONS

CUT DITCH SEE DETAIL A  
EST. RIPRAP=36 TONS

CUT DITCH SEE DETAIL A  
EST. RIPRAP=85 TONS

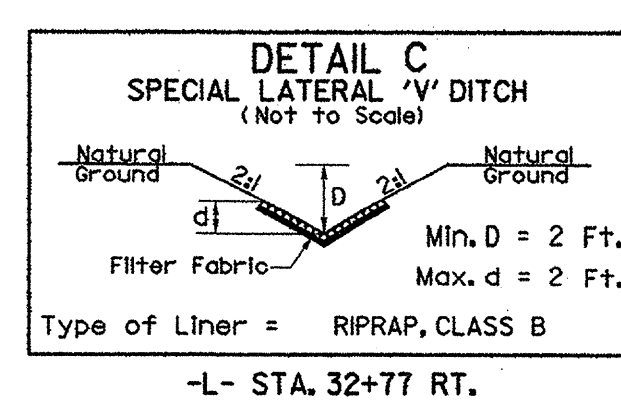
CUT DITCH SEE DETAIL A  
EST. RIPRAP=130 TONS

CUT DITCH SEE DETAIL A  
EST. RIPRAP=47 TONS

Y' DITCH SEE DETAIL C  
EST. DDE=45 CY  
EST. RIPRAP=47 TONS  
EST. FILTER FABRIC=125 SY

PI Sta 33+95.53  
 $\Delta = 37^{\circ} 10' 08.0''$  (LT)  
D = 16' 00' 00.0"  
L = 232.31'  
T = 120.41'  
R = 358.10'  
SE = 0.080  
RO = 186.00'  
V = 35 MPH

END STATE PROJECT R-2409B  
-L- STA. 37+00.00



-L- STA. 32+77 RT.

NOTE: ROCK SILT CHECKS SHALL BE SPACED AT 30 FT. O/C UNLESS OTHERWISE NOTED.

REVISIONS

8/17/99

SYSTEMS  
DESIGN  
INC.