

**TIP PROJECT: B-3701**

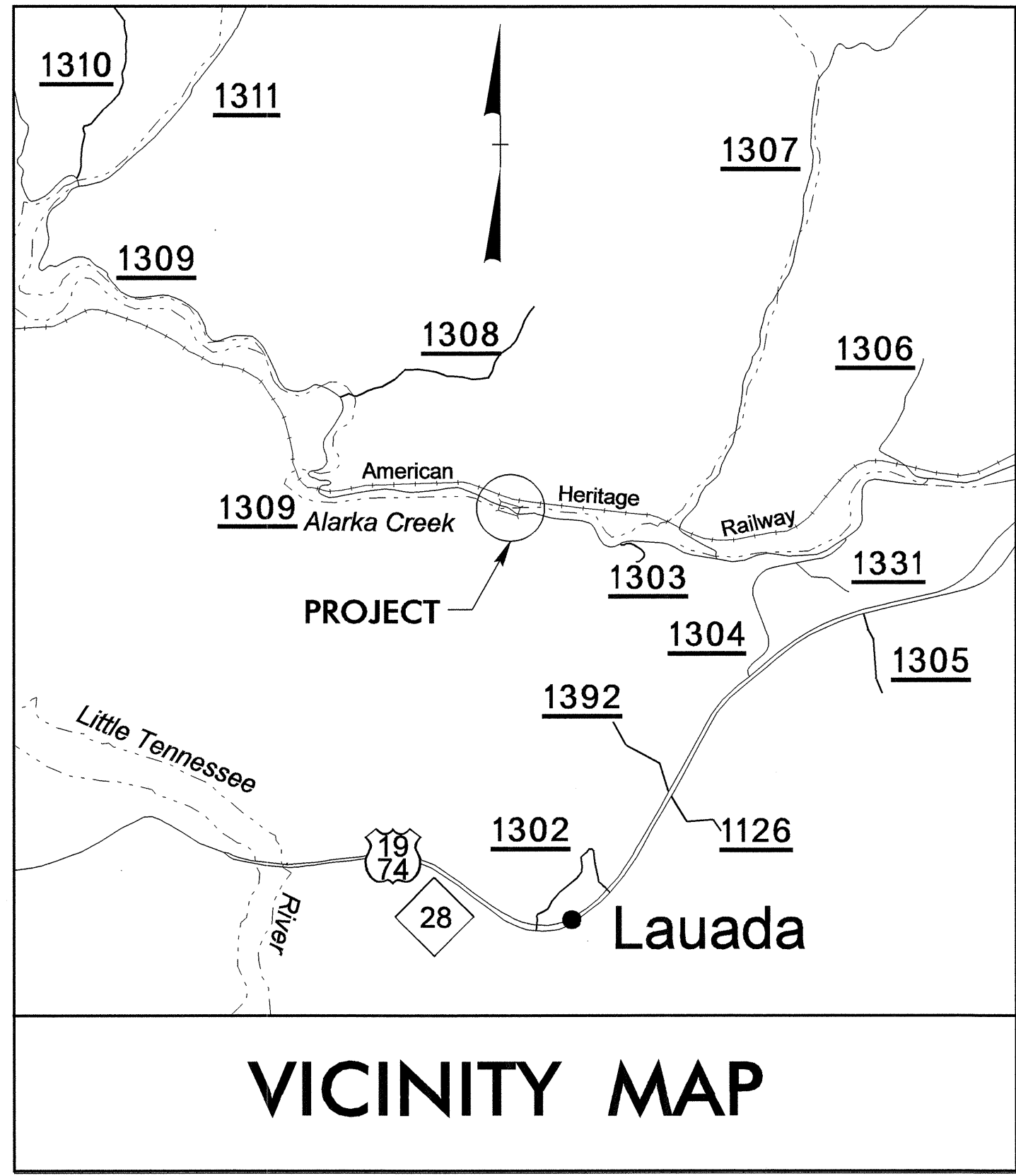
T.I.P. NO.	SHEET NO.
B-3701	UO-1

STATE OF NORTH CAROLINA  
DIVISION OF HIGHWAYS

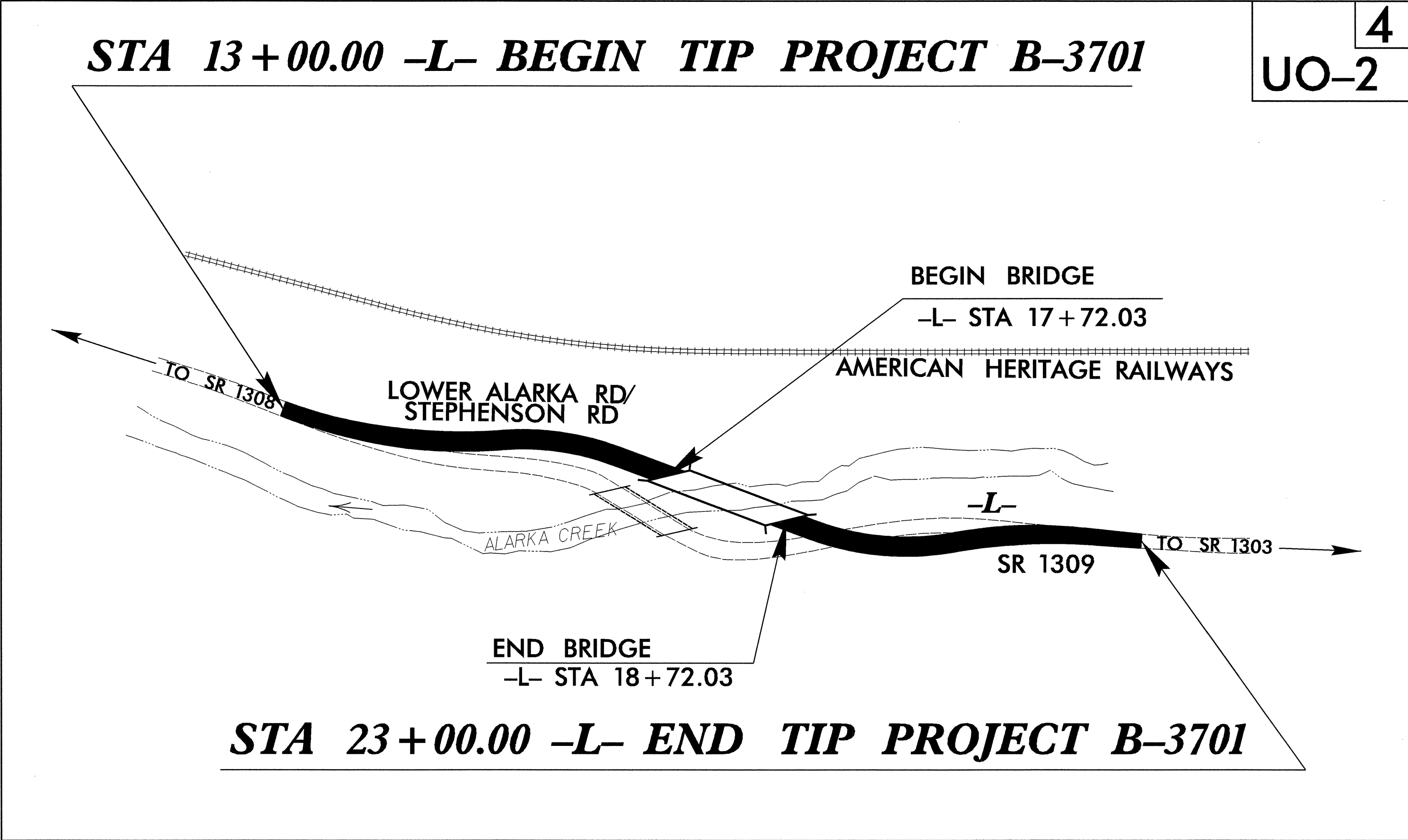
**UTILITY BY OTHERS PLANS  
SWAIN COUNTY**

**LOCATION: BRIDGE NO. 106 OVER ALARKA CREEK ON  
SR 1309 (LOWER ALARKA RD/STEPHENSON BRANCH RD)**

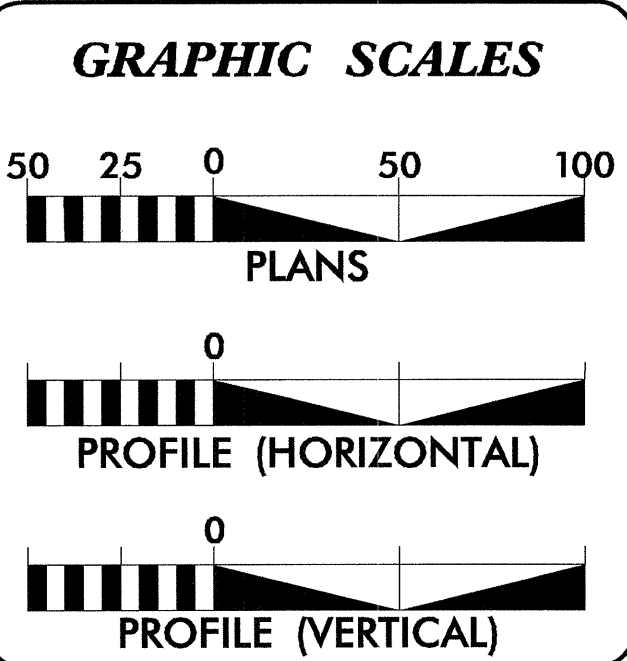
**TYPE OF WORK: UTILITIES**



**VICINITY MAP**



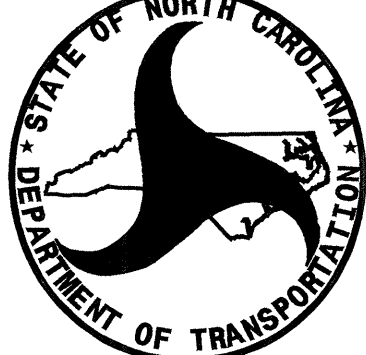
**4**  
**UO-2**



<b>INDEX OF SHEETS</b>	
<u>SHEET NO.</u>	<u>DESCRIPTION</u>
UO-1	TITLE SHEET
UO-2	UTILITY BY OTHERS PLAN SHEET

**UTILITY OWNERS ON PROJECT**

(1) Duke Energy



PREPARED IN THE OFFICE OF:  
**DIVISION OF HIGHWAYS  
 DESIGN SERVICES  
 UTILITY SECTION**

1591 MAIL SERVICES CENTER  
 RALEIGH NC 27699-1591  
 PHONE (919) 250-4128  
 FAX (919) 250-4119

**Roger Worthington, P.E.** UTILITIES SECTION ENGINEER  
**Steve Mckee, P.E.** UTILITIES SQUAD LEADER PROJECT ENGINEER  
**Nabil Hamdan** UTILITIES PROJECT DESIGNER

16-MAR-2006 14:36 P:\utilities\rdy\ut\proj\b3701\ut\_title\_uol\_psh.dgn nhamdan AT P521458

UTILITIES BY OTHERS

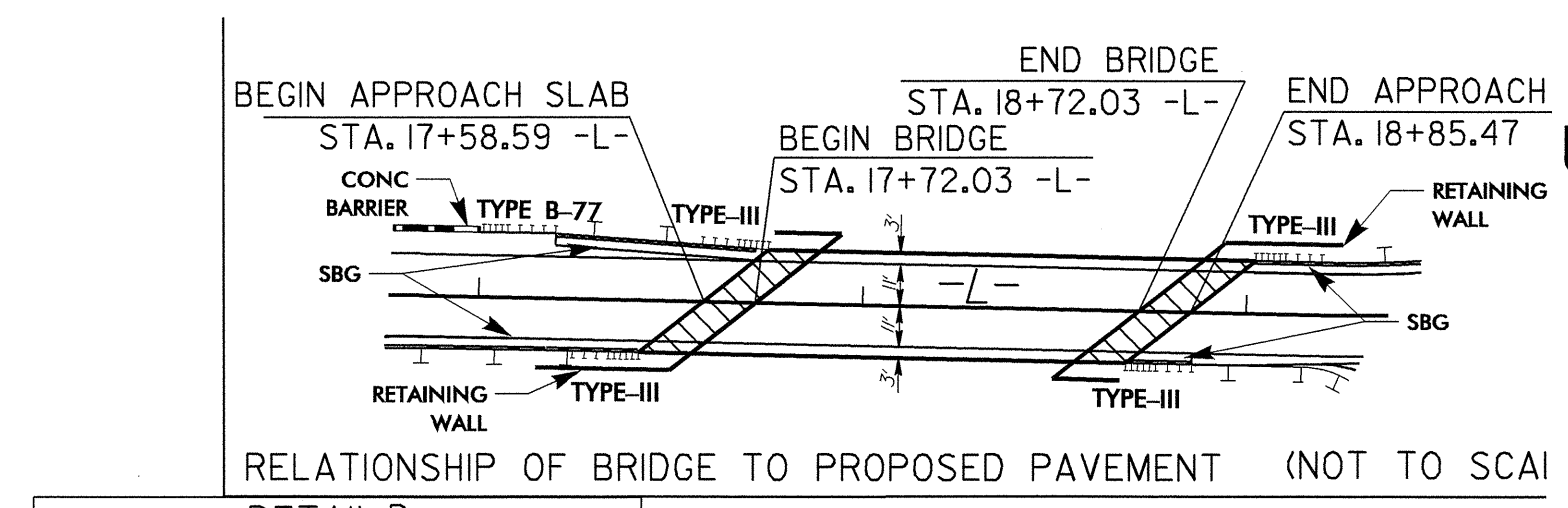
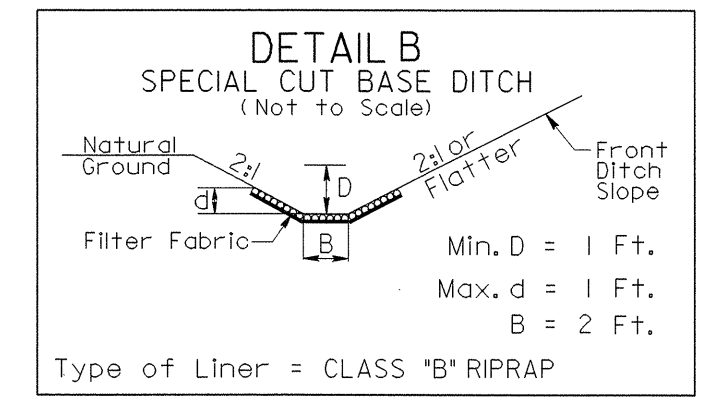
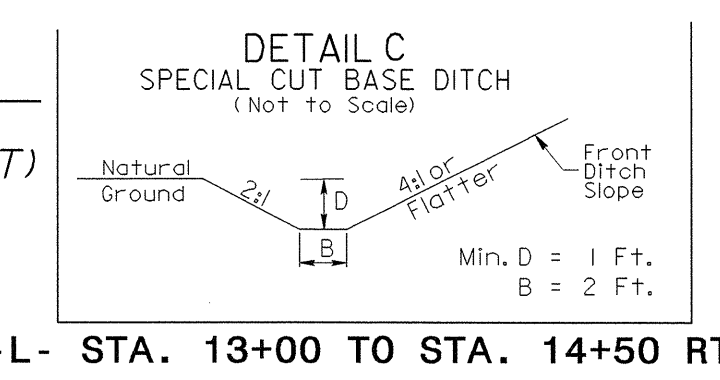
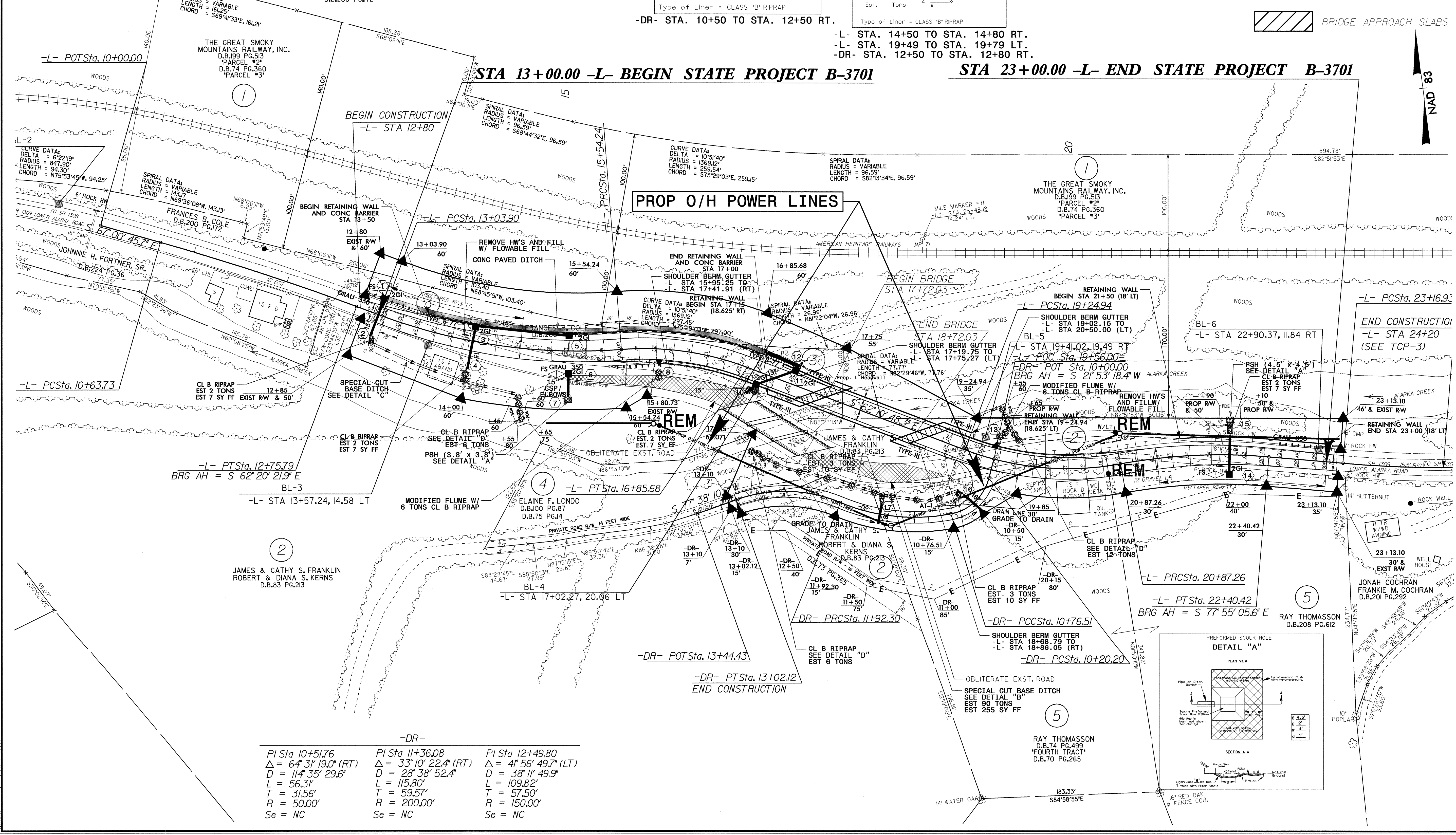
NOTE:  
ALL PROPOSED UTILITY WORK  
SHOWN ON THIS SHEET WILL  
BE DONE BY OTHERS

BRIDGE APPROACH SLABS

PI Sta 11+69.82 Δ = 4° 40' 23.9" (RT) D = 2' 12" 13.3" L = 212.07' T = 106.09' R = 2,600.00' Se = 0.04 Run off = see plans **V = 60 MPH	PI Sta 14+31.08 Δ = 24° 56' 39.8" (LT) D = 9' 57" 52.1" L = 250.33' T = 127.18' R = 575.00' Se = 0.04 Run off = see plans **V = 40 MPH	PI Sta 16+21.03 Δ = 25° 06' 13.4" (RT) D = 19' 05" 54.9" L = 131.44' T = 66.79' R = 300.00' Se = 0.04 Run off = see plans **V = 30 MPH	PI Sta 20+08.14 Δ = 31° 00' 00.0" (LT) D = 19' 05" 54.9" L = 162.32' T = 83.20' R = 300.00' Se = 0.04 Run off = see plans **V = 30 MPH	PI Sta 21+64.30 Δ = 15° 15' 42.7" (RT) D = 9' 57" 52.1" L = 153.16' T = 77.04' R = 575.00' Se = 0.04 Run off = see plans **V = 40 MPH	PI Sta 24+06.99 Δ = 8° 14' 30.6" (LT) D = 4' 35" 01.2" L = 179.81' T = 90.06' R = 1,250.00' Se = 0.04 Run off = see plans **V = 40 MPH
---	--	--	--	---	--

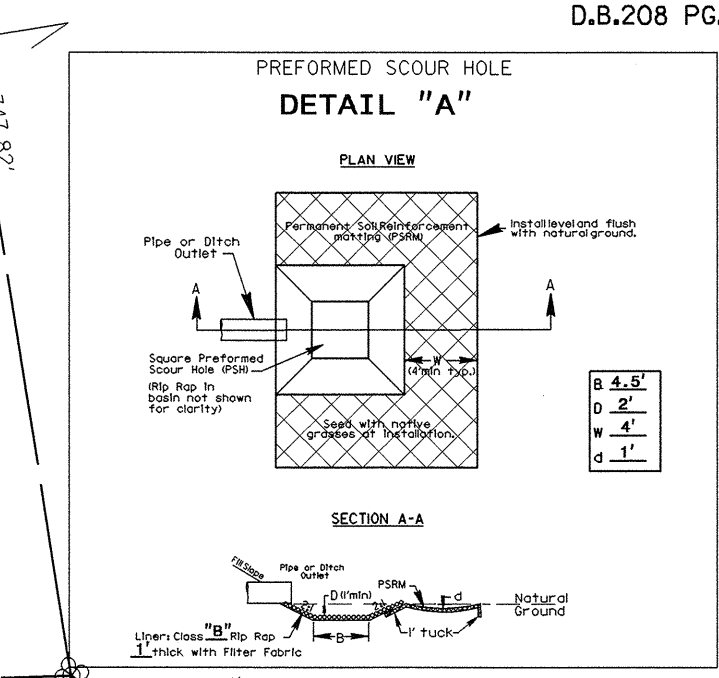
\*\*DESIGN EXCEPTION REQUIRED FOR DESIGN SPEED (30 MPH)

ATA:  
= 13° 44' 42"  
= 1072.90'  
= 257.39'  
= S79° 34' 57"E, 256.77'



- L- STA. 13+00 TO STA. 14+50 RT.
- DR- STA. 10+50 TO STA. 12+50 RT.
- L- STA. 14+50 TO STA. 14+80 RT.
- L- STA. 19+49 TO STA. 19+79 LT.
- DR- STA. 19+50 TO STA. 19+80 RT.
- L- STA. 14+50 TO STA. 14+80 RT.
- L- STA. 19+49 TO STA. 19+79 LT.
- DR- STA. 19+50 TO STA. 19+80 RT.
- STA 13+00.00 -L- BEGIN STATE PROJECT B-3701
- STA 23+00.00 -L- END STATE PROJECT B-3701

PI Sta 10+51.76 Δ = 64° 31' 19.0" (RT) D = 114' 35" 29.6" L = 56.31' T = 31.56' R = 50.00' Se = NC	PI Sta 11+36.08 Δ = 33° 10' 22.4" (RT) D = 28' 38" 52.4" L = 115.80' T = 59.57' R = 200.00' Se = NC	PI Sta 12+49.80 Δ = 41° 56' 49.7" (LT) D = 38' 11" 49.9" L = 109.82' T = 57.50' R = 150.00' Se = NC
--	---	---



16-MAR-2006 16:18  
R:\utilities\y-ch\ut\p\B3701\ut\_04\_uo2\_psh.dgn  
5/14/09