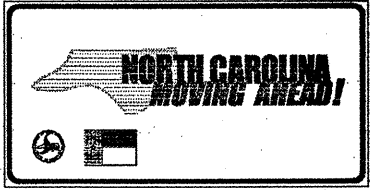


# TWO LANE, TWO WAY WORK ZONE (L-LINES)

FURNISHED BY THE DEPARTMENT

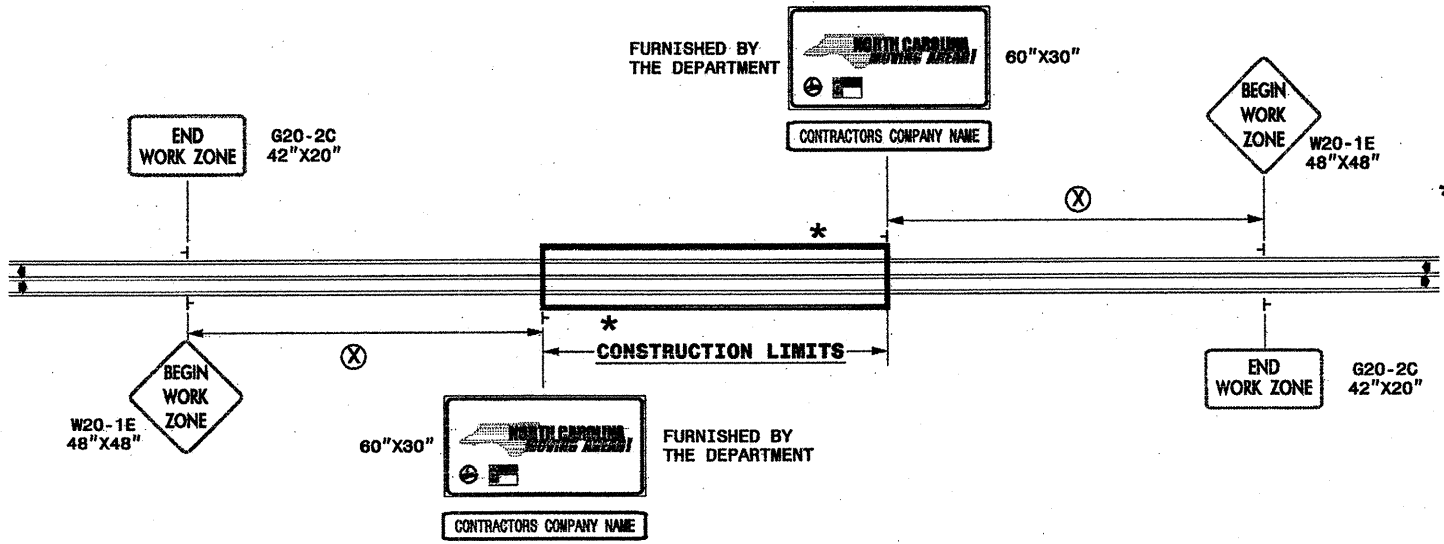


60"X30"

---

CONTRACTORS COMPANY NAME

60" Max. X 12"



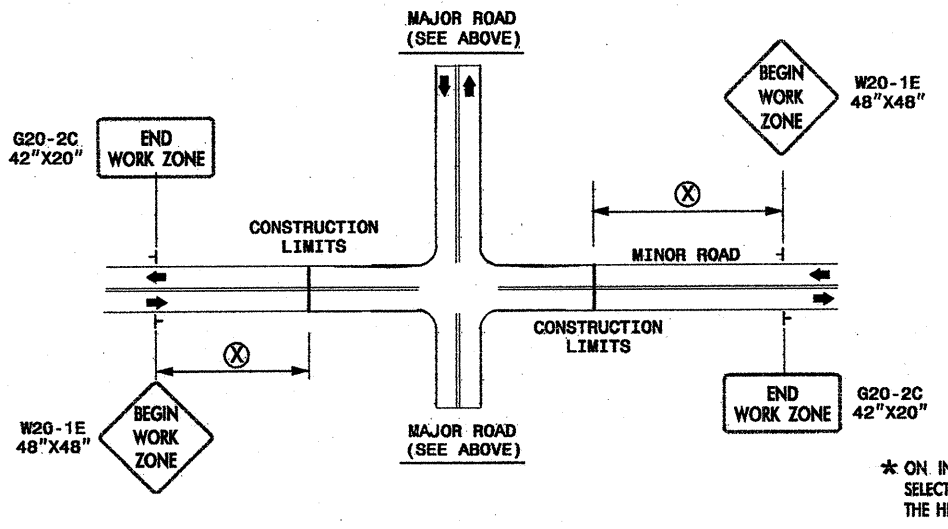
POSTED SPEED LIMIT (M.P.H.)	RECOMMENDED MINIMUM SIGN SPACING
P.S.L. ≤ 50	350'
P.S.L. ≥ 55	500'

\* WORK ZONE NEXT XX MILES G20-1 42"X20"

\* THIS SIGN TO BE USED ON PROJECTS LONGER THAN 2 MILES THE NUMBER DISPLAYED ON THE SIGN IS TO BE A WHOLE NUMBER ROUNDED UP TO THE NEXT MILE IT'S TO BE LOCATED 1,500 FEET INSIDE OF THE CONSTRUCTION LIMITS

STATE OF NORTH CAROLINA  
DEPT. OF TRANSPORTATION  
DIVISION OF HIGHWAYS  
RALEIGH, N.C.

# INTERSECTIONS (-Y- LINES)

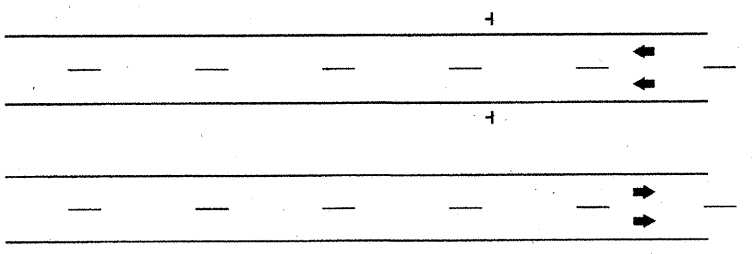


\* ON INTERSECTION TYPE PROJECTS, SELECT THE MAJOR ROAD BASED ON THE HIGHER ADT.

# FREEWAYS/INTERSTATES

DUAL MOUNT "BEGIN WORK ZONE" SIGNS 1,000' IN ADVANCE OF PROJECT LIMITS

DUAL MOUNT "MOVING AHEAD" SIGNS 500' IN ADVANCE OF PROJECT LIMITS



# GENERAL NOTES

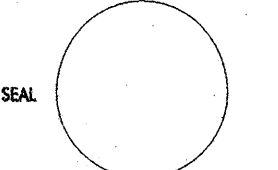

SEE SPECIAL PROVISIONS FOR "NORTH CAROLINA MOVING AHEAD" REQUIREMENTS.

**LEGEND**

— STATIONARY SIGN

← DIRECTION OF TRAFFIC FLOW

DETAIL DRAWING FOR ADVANCE WARNING WORK ZONE SIGNS

APPROVED: _____	DATE: _____	<b>ADVANCE WARNING WORK ZONE SIGNS FOR "MOVING AHEAD"</b>	
			
SCALE: NONE	DATE: 07/03		REVISIONS
DESIGN BY: JSK	REVIEWED BY: SK		

\$\$\$\$\$SYTIME\$\$\$\$\$  
\$\$\$\$\$SYPRNAME\$\$\$\$\$

