

TIP: B-3509

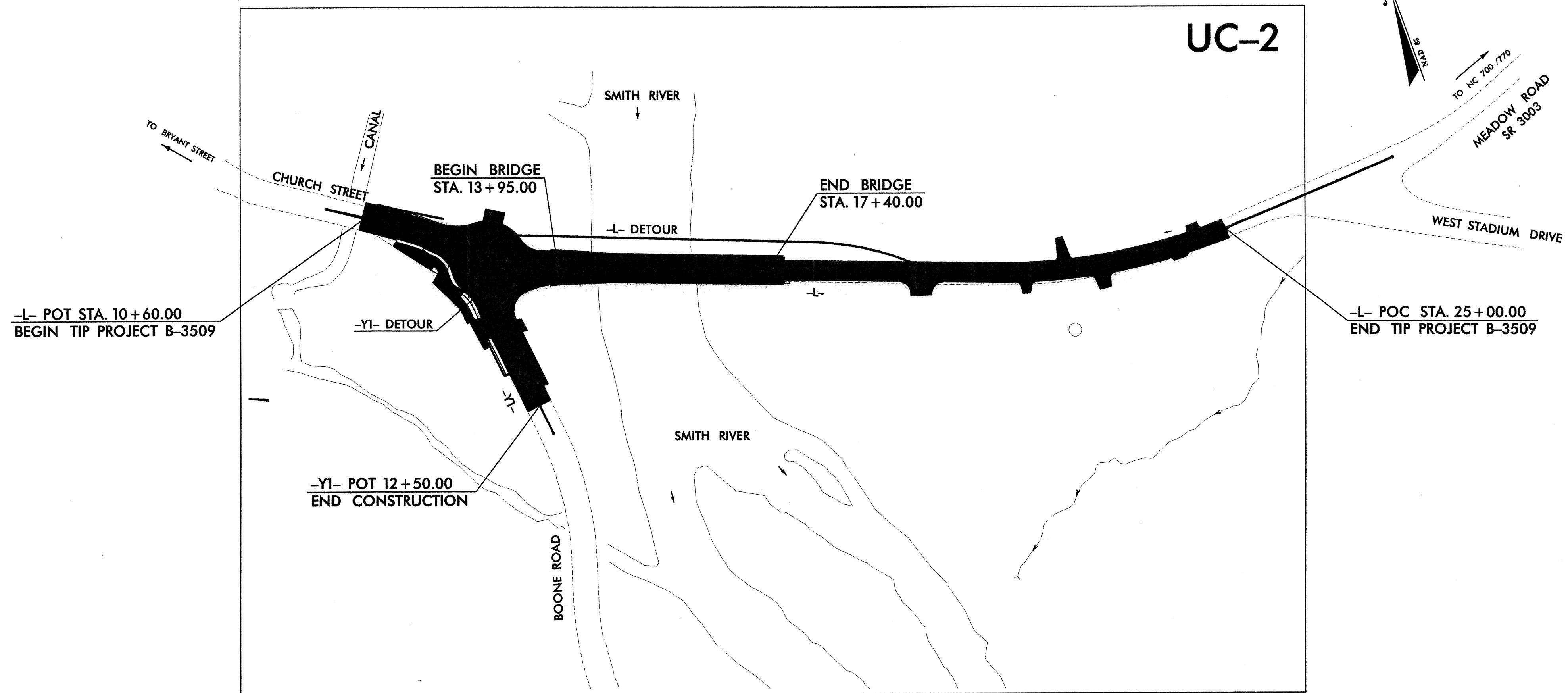
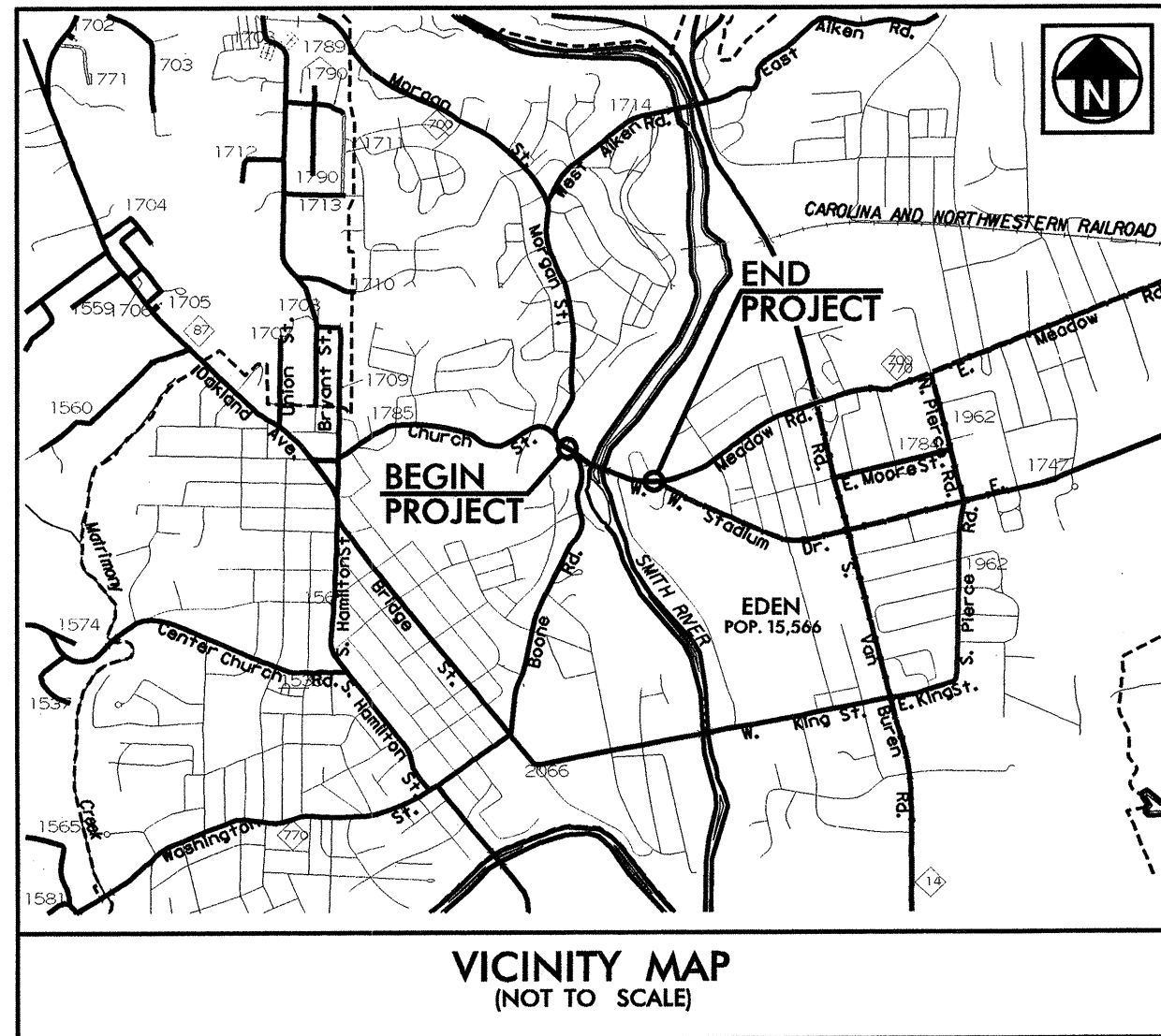
CONTRACT: C201290

T.I.P. NO.	SHEET NO.
B - 3509	UC-1

STATE OF NORTH CAROLINA
DIVISION OF HIGHWAYS

ROCKINGHAM COUNTY

LOCATION: BRIDGE NO. 75 OVER SMITH RIVER AND APPROACHES ON SR 3003 (MEADOW ROAD)
TYPE OF WORK: UTILITY CONSTRUCTION



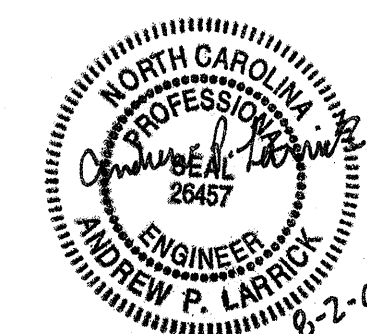
THIS PROJECT IS WITHIN THE MUNICIPAL BOUNDARY OF EDEN

INDEX OF SHEETS

<u>SHEET NO.</u>	<u>DESCRIPTION</u>
UC-1	TITLE SHEET
UC-2	UTILITY CONSTRUCTION PLAN SHEET
UC-3	UTILITY CONSTRUCTION PROFILE SHEET
UC-4	UTILITY CONSTRUCTION PROFILE SHEET
UC-5	UTILITY CONSTRUCTION DETAIL SHEET

WATER AND SEWER OWNERS ON PROJECT

WATER - CITY OF EDEN
SEWER - CITY OF EDEN

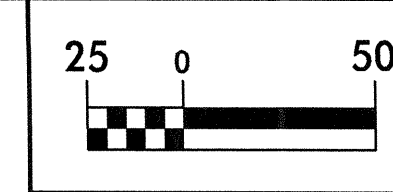
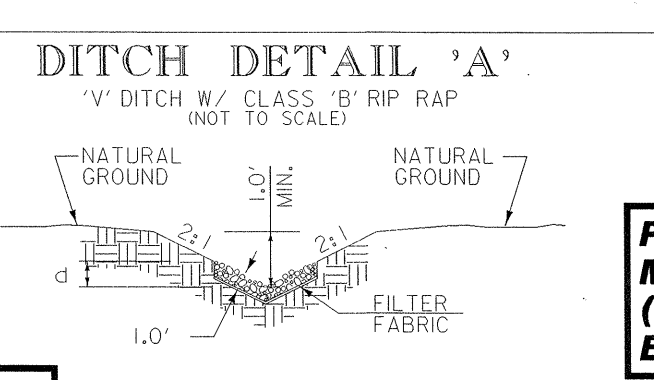
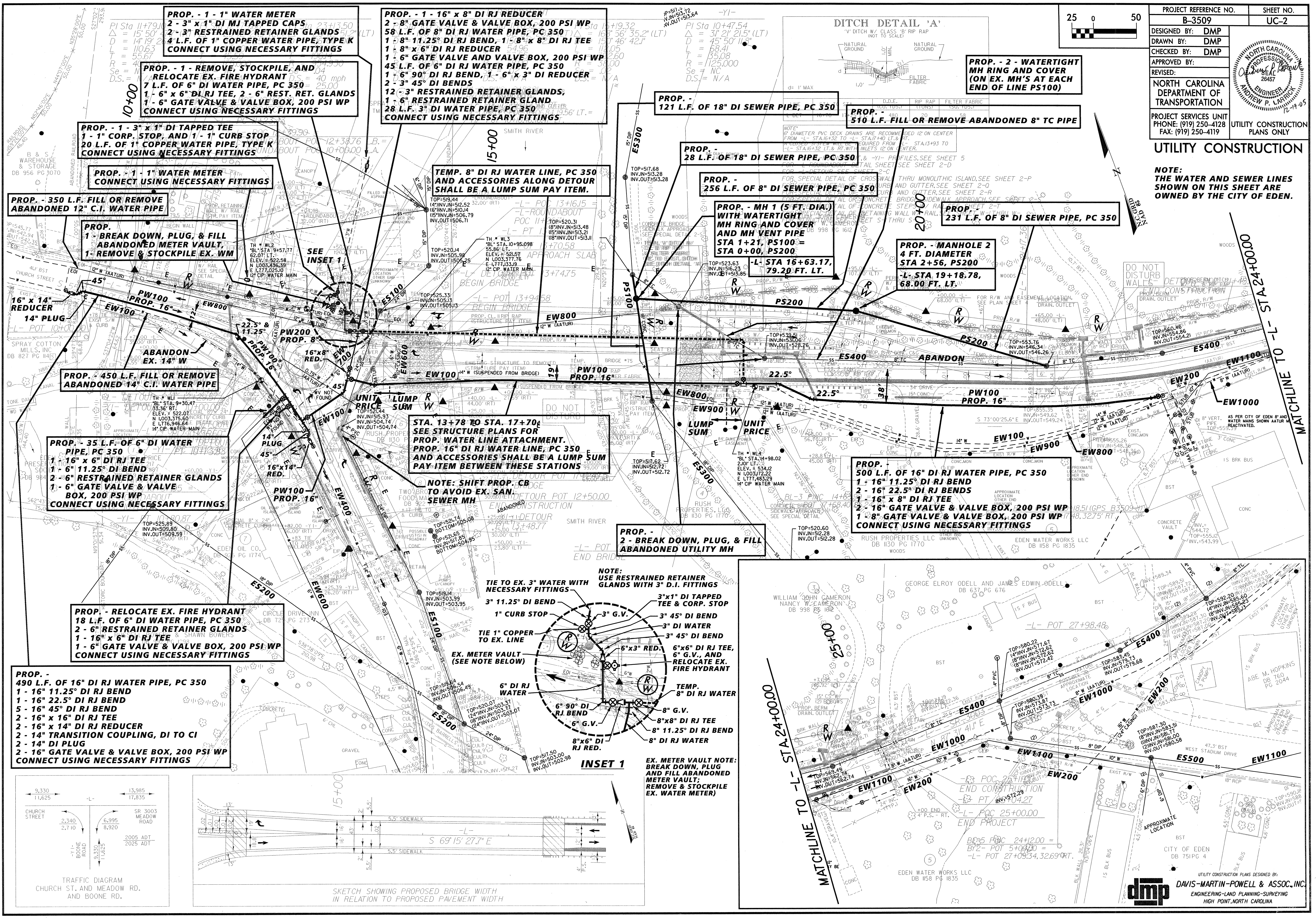


PREPARED IN THE OFFICE OF:
DAVIS-MARTIN-POWELL AND ASSOCIATES, INC.
6415 OLD PLANK ROAD
HIGH POINT, NC 27265
PHONE (336) 886-4821
FAX (336) 886-4458

Randy McNeill, P.E. UTILITIES PROJECT MANAGER
Andy Larrick, P.E. UTILITIES PROJECT ENGINEER
Ralph Lowe UTILITIES PROJECT DESIGNER

UTILITY CONSTRUCTION

NOTE:
THE WATER AND SEWER LINES SHOWN ON THIS SHEET ARE OWNED BY THE CITY OF EDEN.



PROP. - 1 - 1" WATER METER
2 - 3" x 1" DI MJ TAPPED CAPS
2 - 3" RESTRAINED RETAINER GLANDS
4 L.F. OF 1" COPPER WATER PIPE, TYPE K
CONNECT USING NECESSARY FITTINGS

PROP. - 1 - REMOVE, STOCKPILE, AND RELOCATE EX. FIRE HYDRANT
7 L.F. OF 6" DI WATER PIPE, PC 350
1 - 6" x 6" DI RJ TEE, 2 - 6" REST. RET. GLANDS
1 - 6" GATE VALVE & VALVE BOX, 200 PSI WP
CONNECT USING NECESSARY FITTINGS

PROP. - 1 - 3" x 1" DI TAPPED TEE
1 - 1" CORP. STOP, AND 1 - 1" CURB STOP
20 L.F. OF 1" COPPER WATER PIPE, TYPE K
CONNECT USING NECESSARY FITTINGS

PROP. - 1 - 1" WATER METER
CONNECT USING NECESSARY FITTINGS

PROP. - 350 L.F. FILL OR REMOVE ABANDONED 12" C.I. WATER PIPE

PROP. - 1 - BREAK DOWN, PLUG, & FILL ABANDONED METER VAULT,
1 - REMOVE & STOCKPILE EX. WM

PROP. - 1 - 16" x 8" DI RJ REDUCER
2 - 8" GATE VALVE & VALVE BOX, 200 PSI WP
58 L.F. OF 8" DI RJ WATER PIPE, PC 350
1 - 8" 11.25" DI RJ BEND, 1 - 8" x 8" DI RJ TEE
1 - 8" x 6" DI RJ REDUCER
1 - 6" GATE VALVE AND VALVE BOX, 200 PSI WP
45 L.F. OF 6" DI RJ WATER PIPE, PC 350
1 - 6" 90° DI RJ BEND, 1 - 6" x 3" DI REDUCER
2 - 3" 45° DI BENDS
12 - 3" RESTRAINED RETAINER GLANDS
2 - 6" RESTRAINED RETAINER GLAND
28 L.F. 3" DI WATER PIPE, PC 350
CONNECT USING NECESSARY FITTINGS

TEMP. 8" DI RJ WATER LINE, PC 350 AND ACCESSORIES ALONG DETOUR SHALL BE A LUMP SUM PAY ITEM.

PROP. - 121 L.F. OF 18" DI SEWER PIPE, PC 350

PROP. - 510 L.F. FILL OR REMOVE ABANDONED 8" TC PIPE

PROP. - 28 L.F. OF 18" DI SEWER PIPE, PC 350

PROP. - 256 L.F. OF 8" DI SEWER PIPE, PC 350

PROP. - MH 1 (5 FT. DIA.) WITH WATERTIGHT MH RING AND COVER AND MH VENT PIPE
STA 1+21, PS100 = STA 0+00, PS200

PROP. - 231 L.F. OF 8" DI SEWER PIPE, PC 350

PROP. - MANHOLE 2 4 FT. DIAMETER
STA 2+56, PS200
L- STA 19+18.78, 68.00 FT. LT.

PROP. - 450 L.F. FILL OR REMOVE ABANDONED 14" C.I. WATER PIPE

PROP. - 35 L.F. OF 6" DI WATER PIPE, PC 350
1 - 6" 11.25" DI BEND
2 - 6" RESTRAINED RETAINER GLANDS
1 - 6" GATE VALVE & VALVE BOX, 200 PSI WP
CONNECT USING NECESSARY FITTINGS

STA. 13+78 TO STA. 17+70
SEE STRUCTURE PLANS FOR PROP. 16" DI RJ WATER LINE, PC 350 AND ACCESSORIES SHALL BE A LUMP SUM PAY ITEM BETWEEN THESE STATIONS

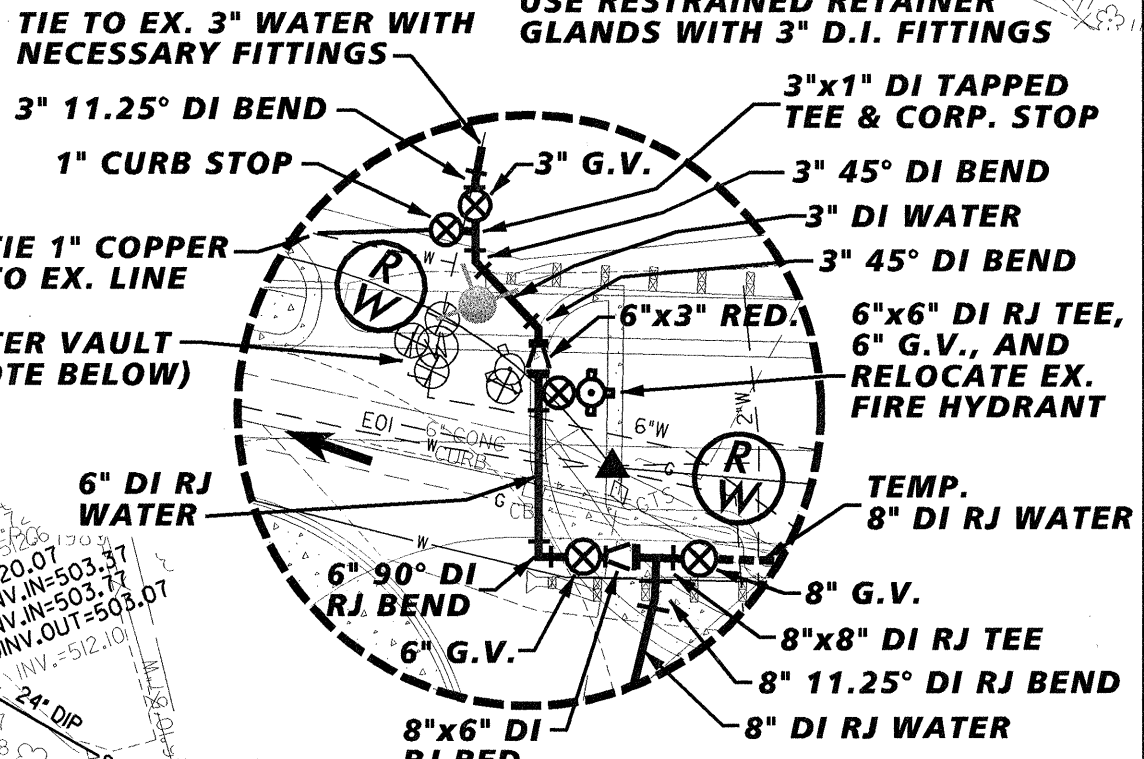
NOTE: SHIFT PROP. CB TO AVOID EX. SAN. SEWER MH

PROP. - 2 - BREAK DOWN, PLUG, & FILL ABANDONED UTILITY MH

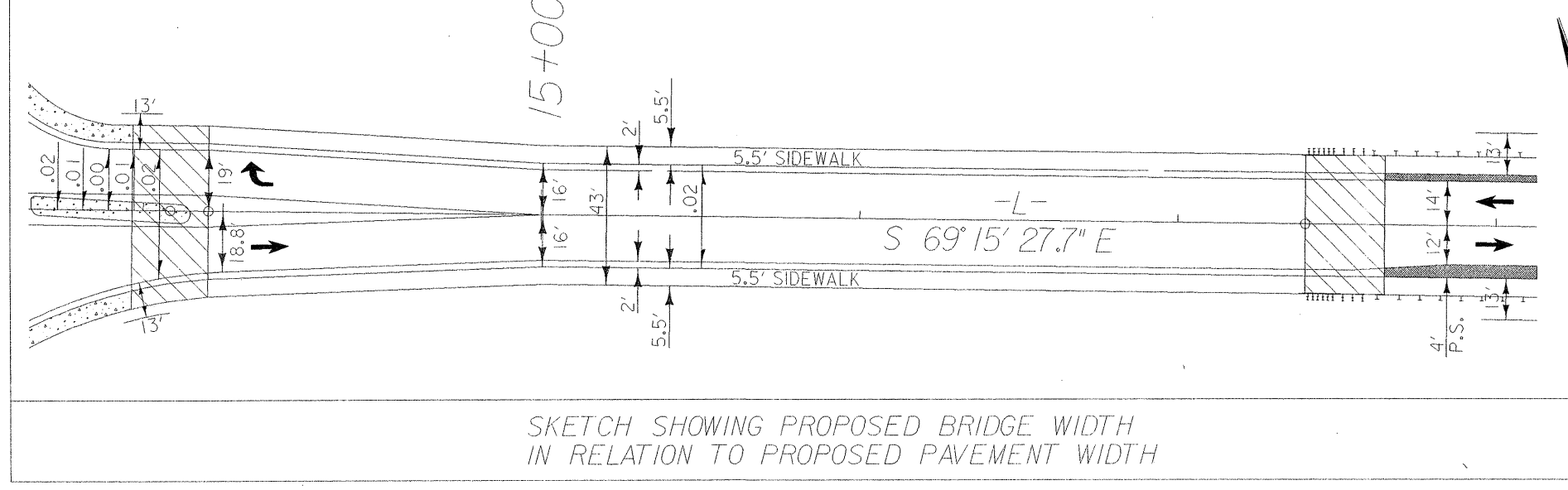
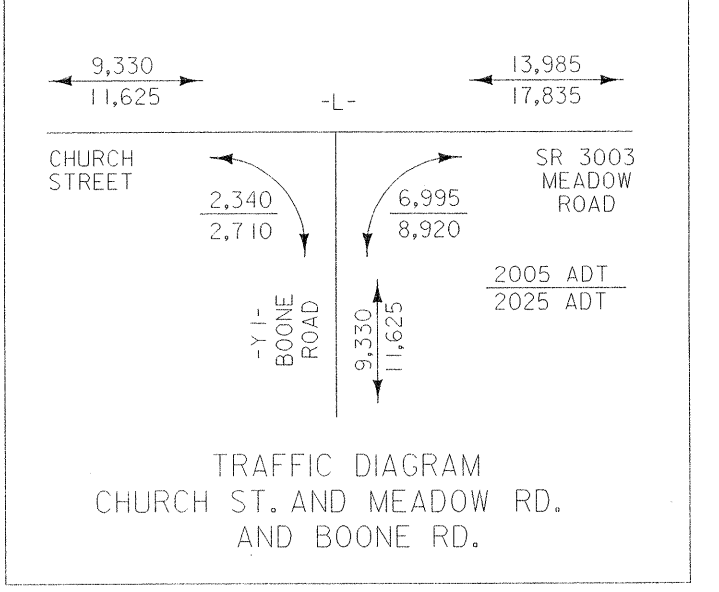
PROP. - 500 L.F. OF 16" DI RJ WATER PIPE, PC 350
1 - 16" 11.25" DI RJ BEND
2 - 16" 22.5" DI RJ BENDS
1 - 16" x 8" DI RJ TEE
2 - 16" GATE VALVE & VALVE BOX, 200 PSI WP
1 - 8" GATE VALVE & VALVE BOX, 200 PSI WP
CONNECT USING NECESSARY FITTINGS

PROP. - RELOCATE EX. FIRE HYDRANT
18 L.F. OF 6" DI WATER PIPE, PC 350
2 - 6" RESTRAINED RETAINER GLANDS
1 - 16" x 6" DI RJ TEE
1 - 6" GATE VALVE & VALVE BOX, 200 PSI WP
CONNECT USING NECESSARY FITTINGS

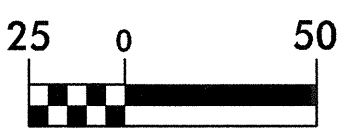
PROP. - 490 L.F. OF 16" DI RJ WATER PIPE, PC 350
1 - 16" 11.25" DI RJ BEND
1 - 16" 22.5" DI RJ BEND
5 - 16" 45" DI RJ BEND
2 - 16" x 16" DI RJ TEE
2 - 16" x 14" DI RJ REDUCER
2 - 14" TRANSITION COUPLING, DI TO CI
2 - 14" DI PLUG
2 - 16" GATE VALVE & VALVE BOX, 200 PSI WP
CONNECT USING NECESSARY FITTINGS



EX. METER VAULT NOTE: BREAK DOWN, PLUG, AND FILL ABANDONED METER VAULT; REMOVE & STOCKPILE EX. WATER METER

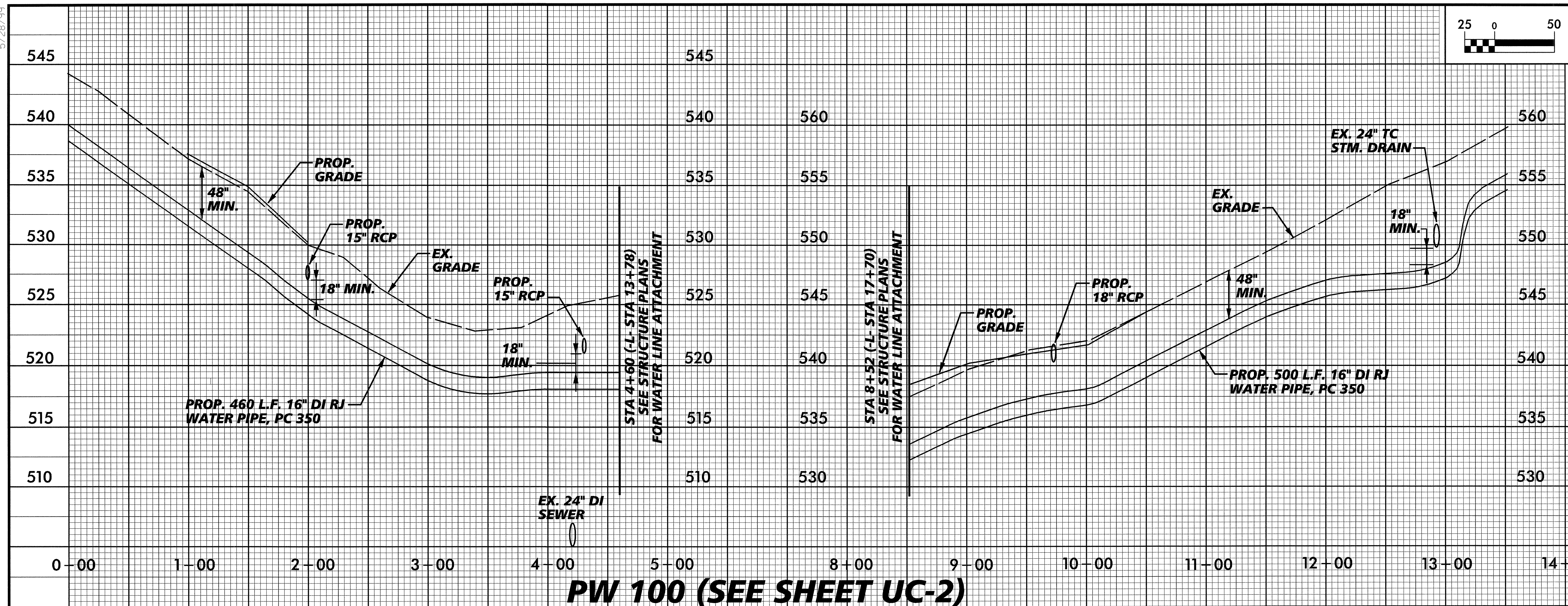


5/28/99

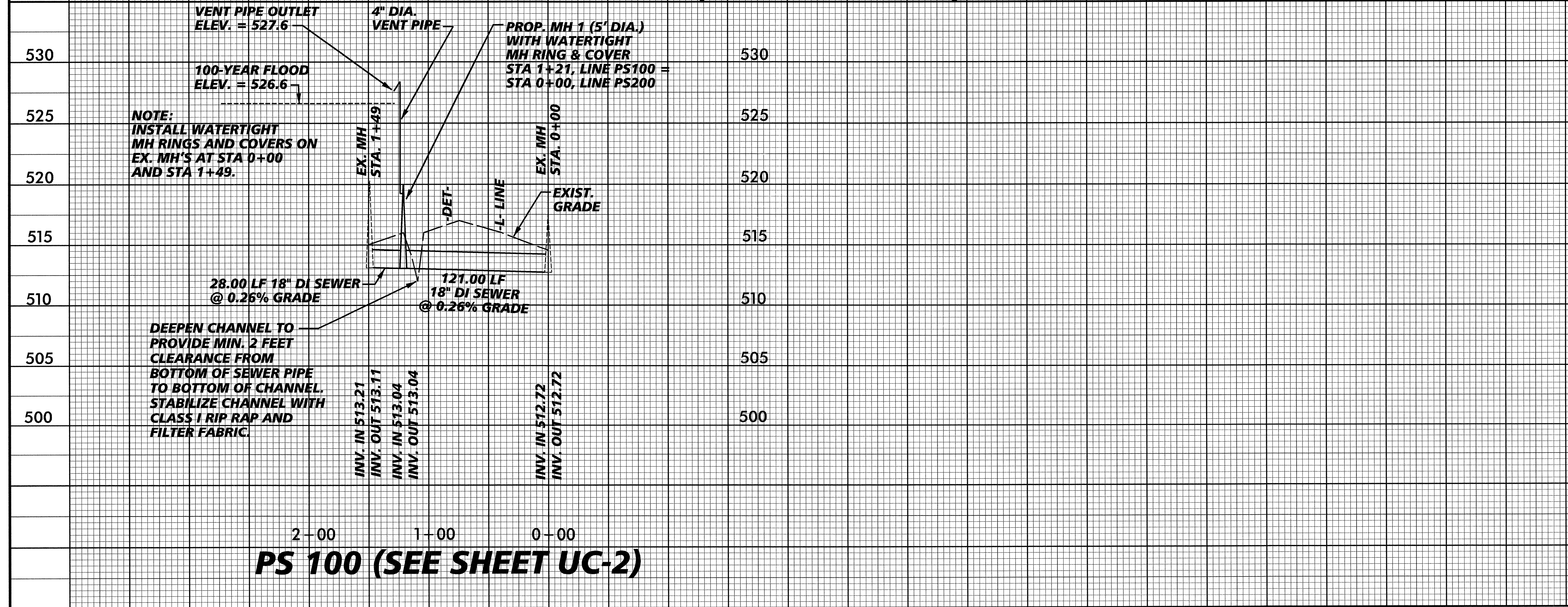


PROJECT REFERENCE NO. B-3509	SHEET NO. UC-3
DESIGNED BY: DMP	
DRAWN BY: DMP	
CHECKED BY: DMP	
APPROVED BY: DMP	
REVISED:	
NORTH CAROLINA DEPARTMENT OF TRANSPORTATION	
PROJECT SERVICES UNIT PHONE: (919) 250-4128 FAX: (919) 250-4119	
UTILITY CONSTRUCTION PLANS ONLY	

UTILITY CONSTRUCTION

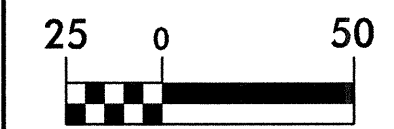


PW 100 (SEE SHEET UC-2)

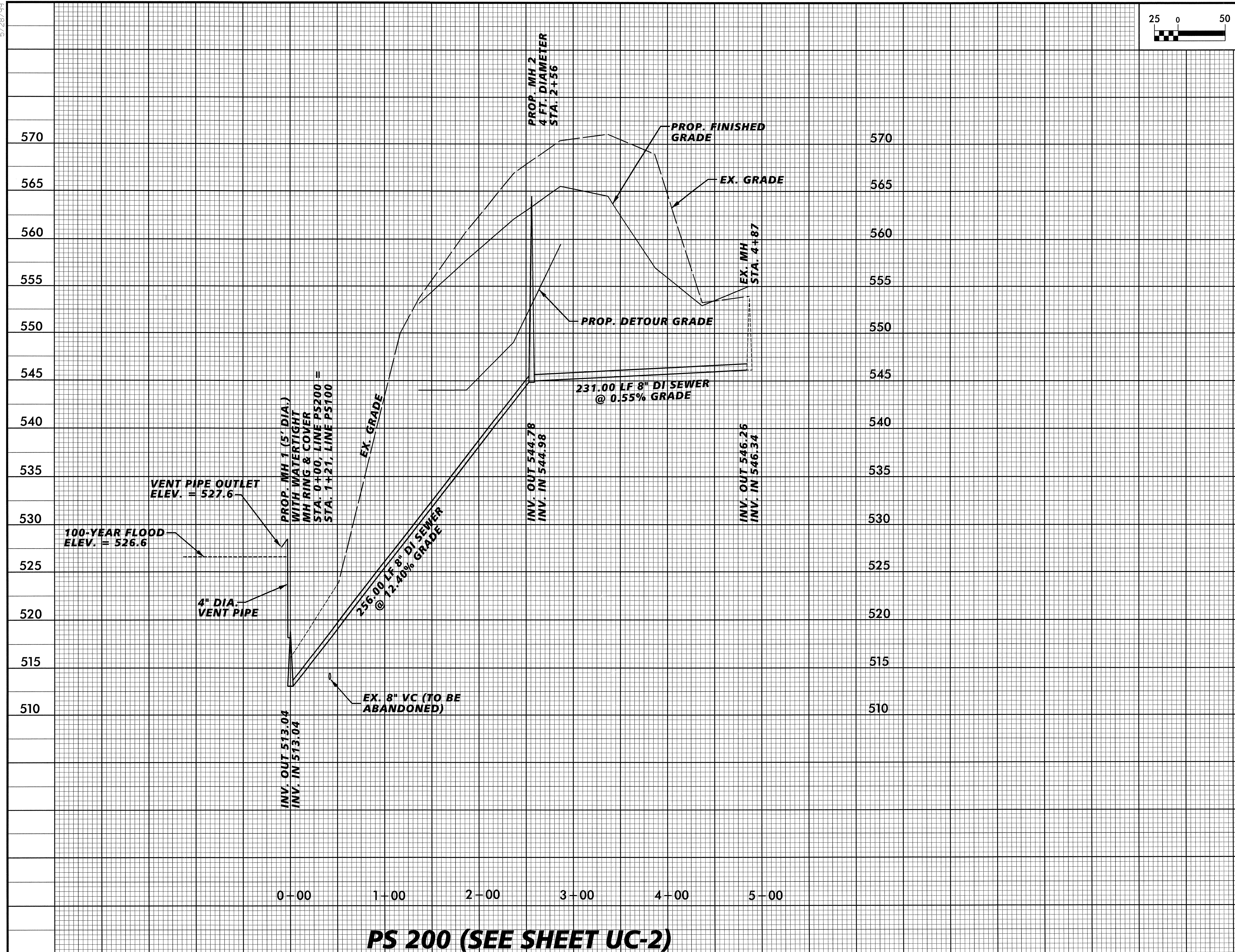


PS 100 (SEE SHEET UC-2)

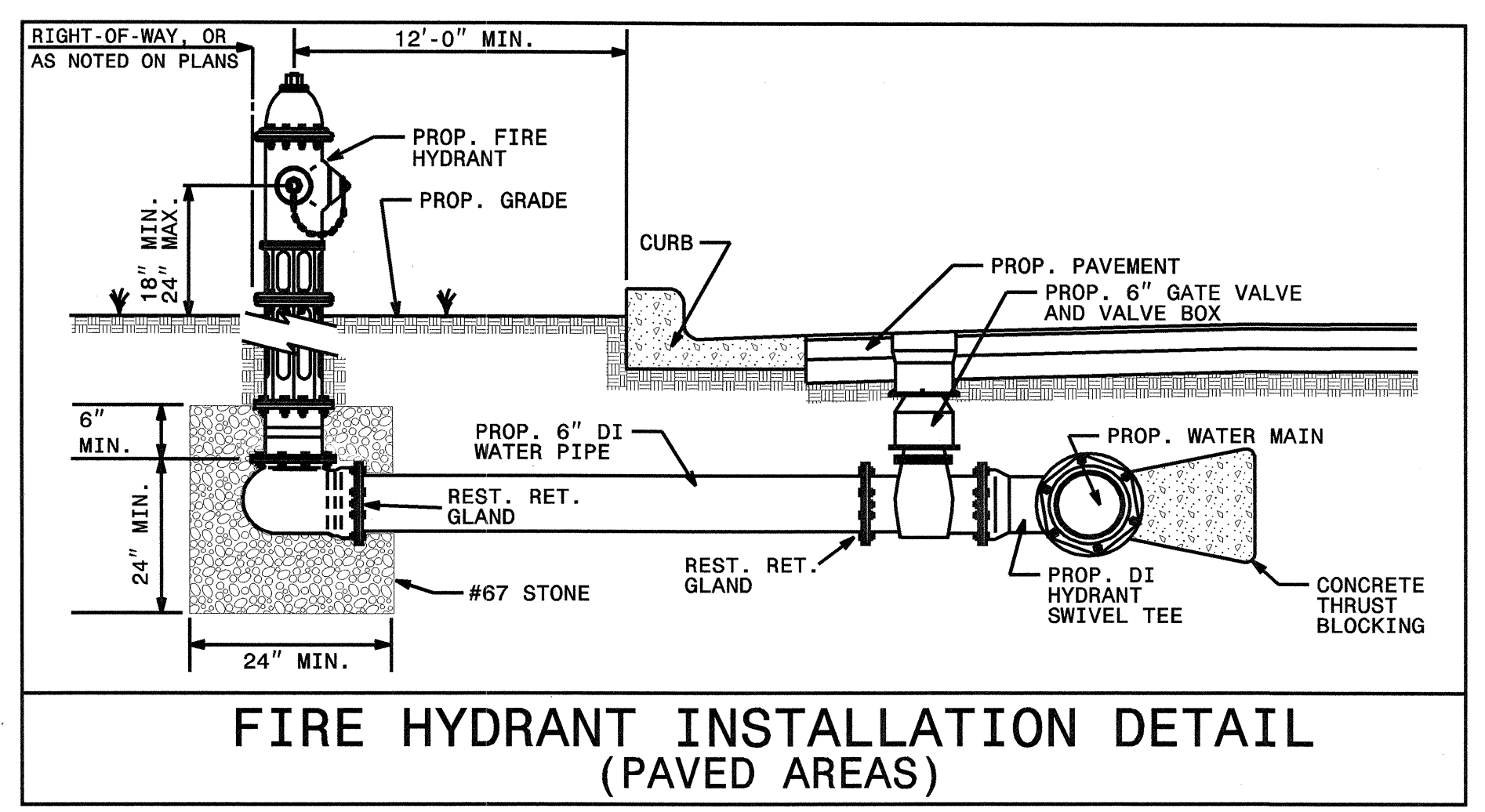
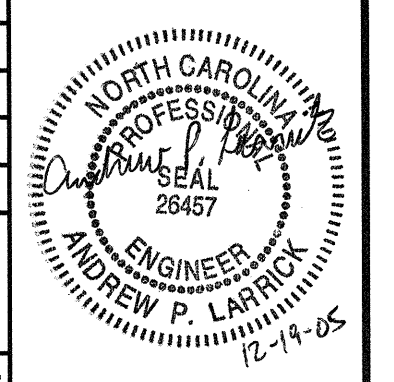
5/28/99



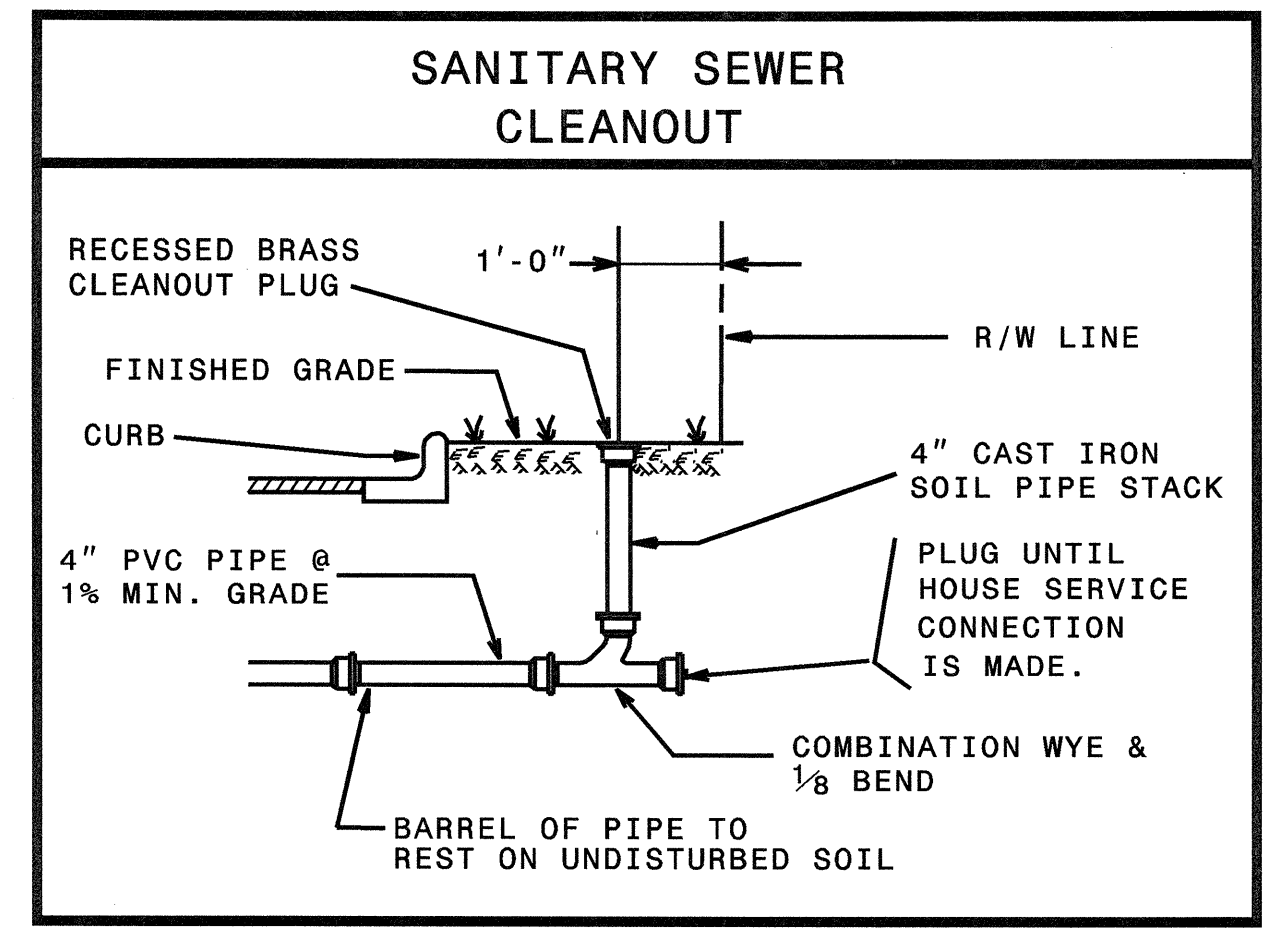
PROJECT REFERENCE NO. B-3509	SHEET NO. UC-4
DESIGNED BY: DMP	
DRAWN BY: DMP	
CHECKED BY: DMP	
APPROVED BY:	
REVISD:	
NORTH CAROLINA DEPARTMENT OF TRANSPORTATION	
PROJECT SERVICES UNIT PHONE: (919) 250-4128 FAX: (919) 250-4119	
UTILITY CONSTRUCTION PLANS ONLY	



PS 200 (SEE SHEET UC-2)



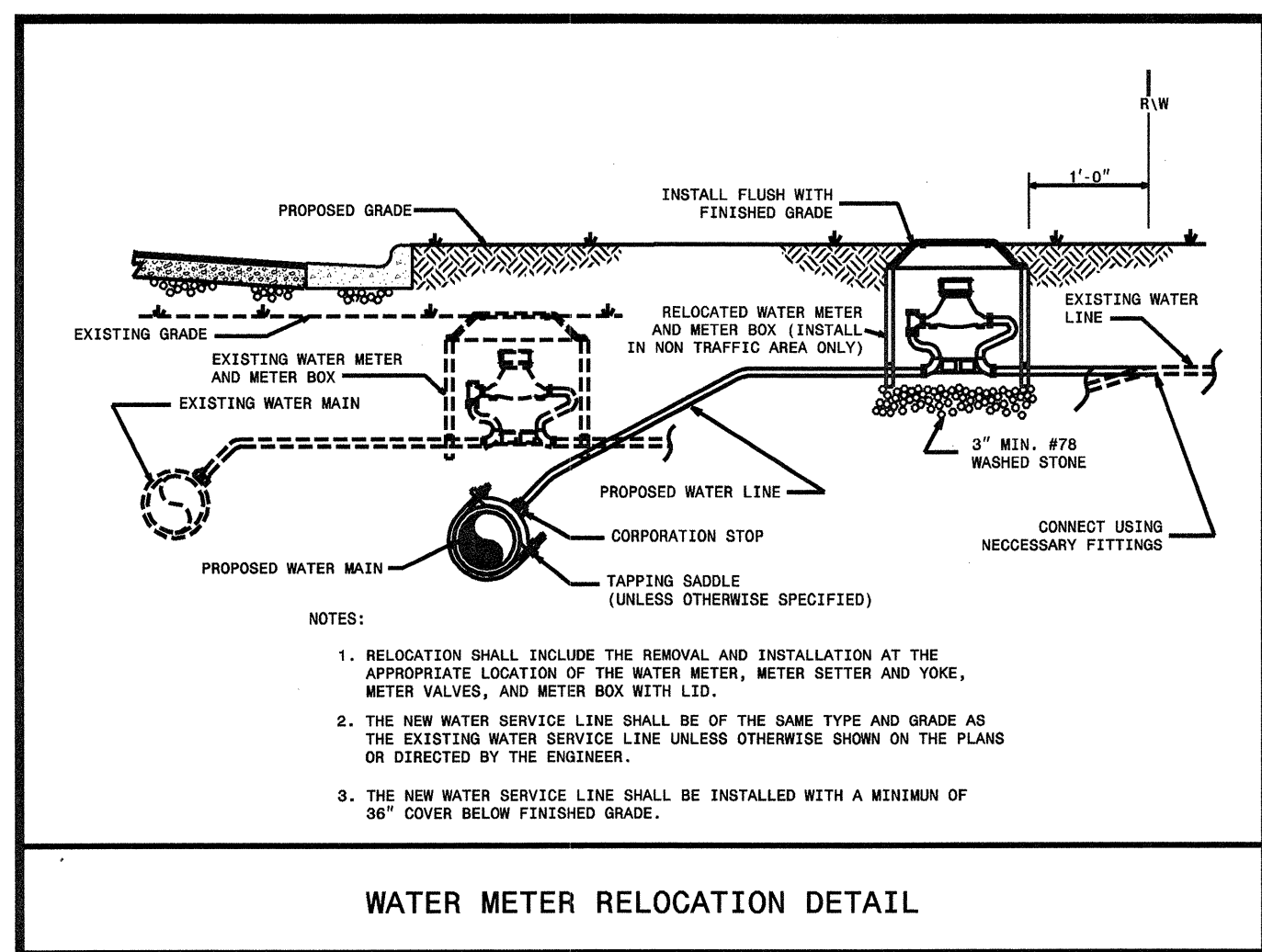
FIRE HYDRANT INSTALLATION DETAIL (PAVED AREAS)



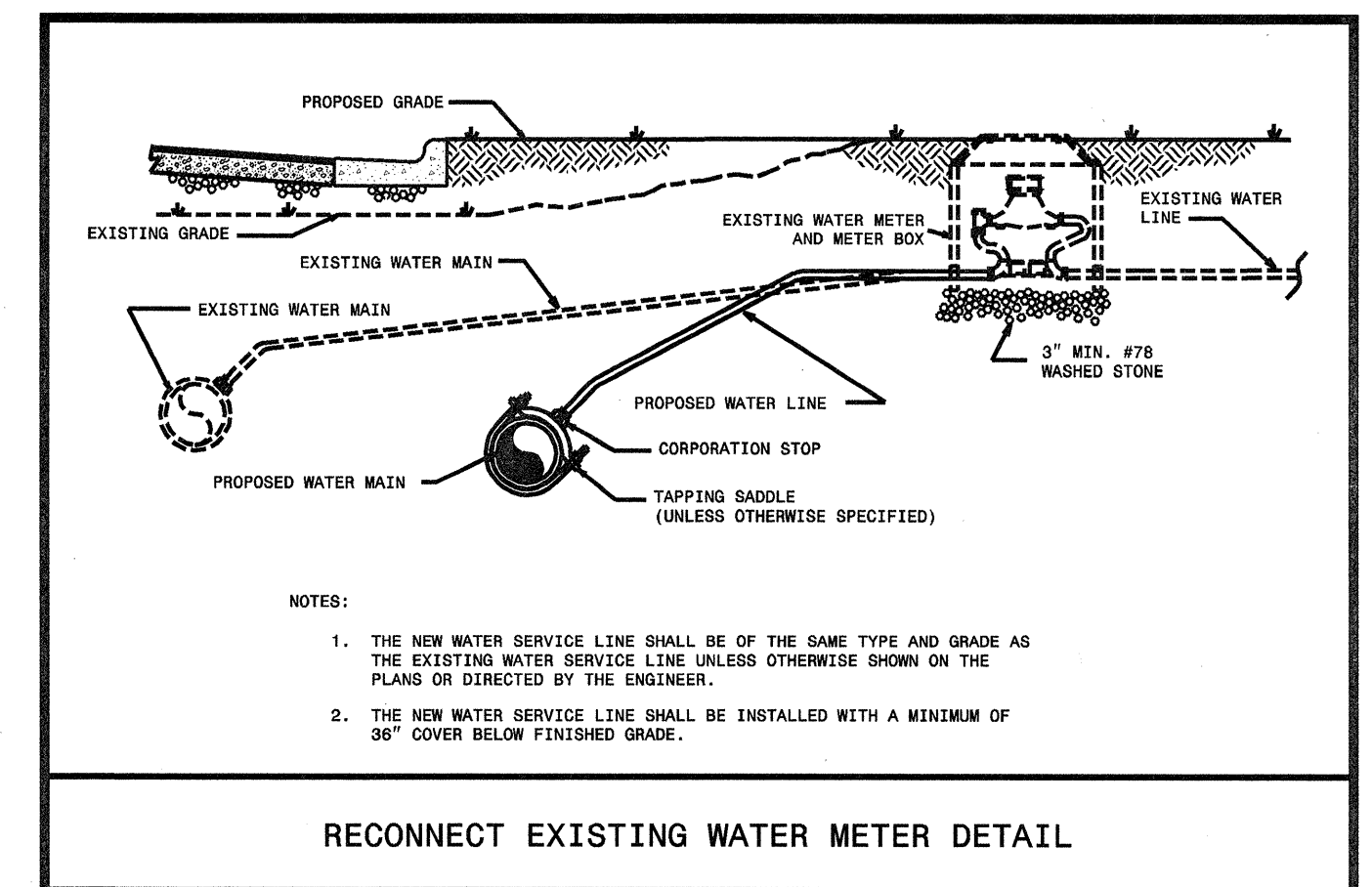
THE CONTRACTOR SHALL REPLACE ANY DAMAGED SEWER LATERALS AND/OR CLEANOUTS AS DIRECTED BY THE ENGINEER. THE NECESSARY QUANTITIES HAVE BEEN ADDED TO THE CONTRACT TO FACILITATE THIS PROCEDURE.

MAXIMUM TRENCH WIDTH AT TOP OF PIPE

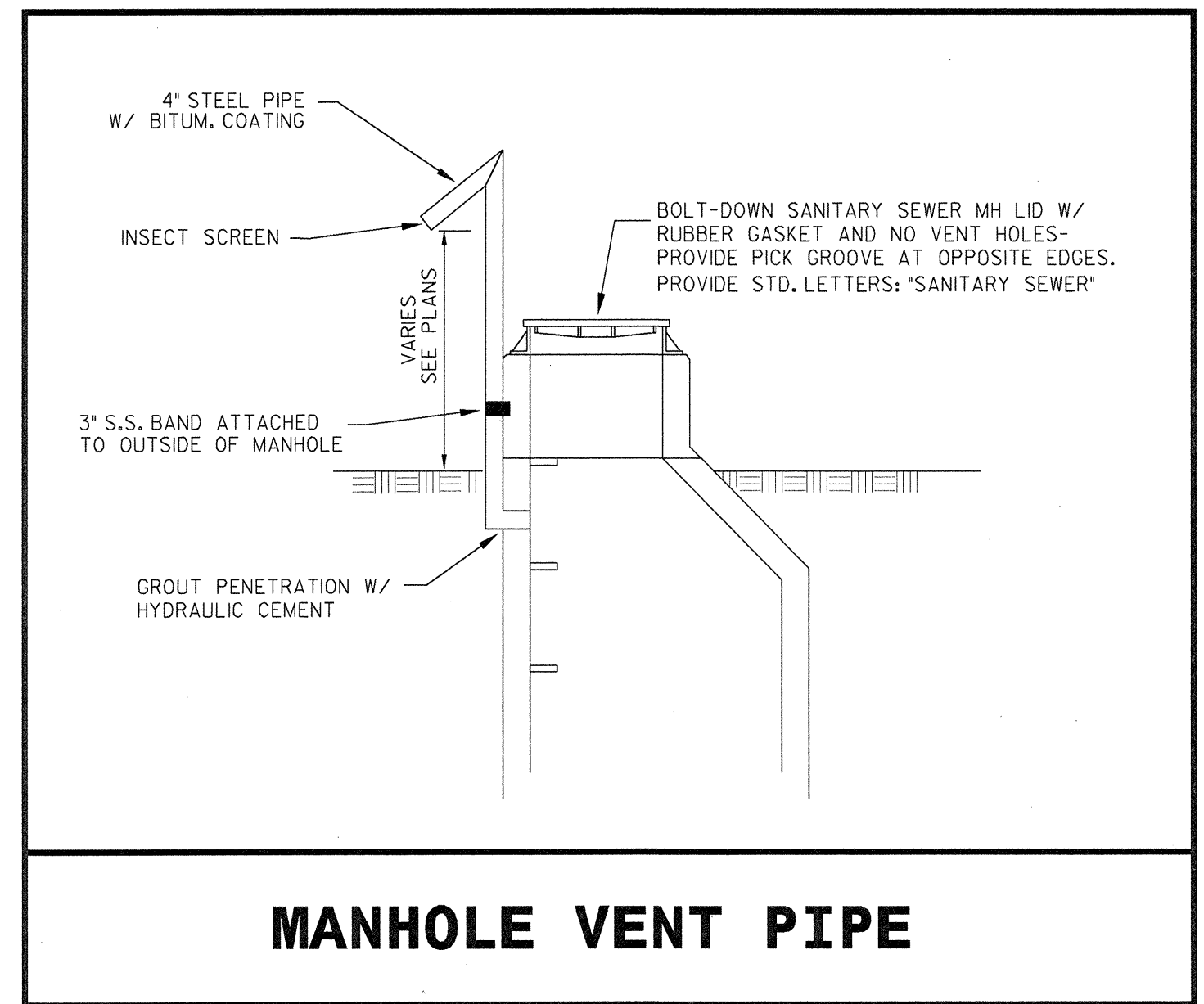
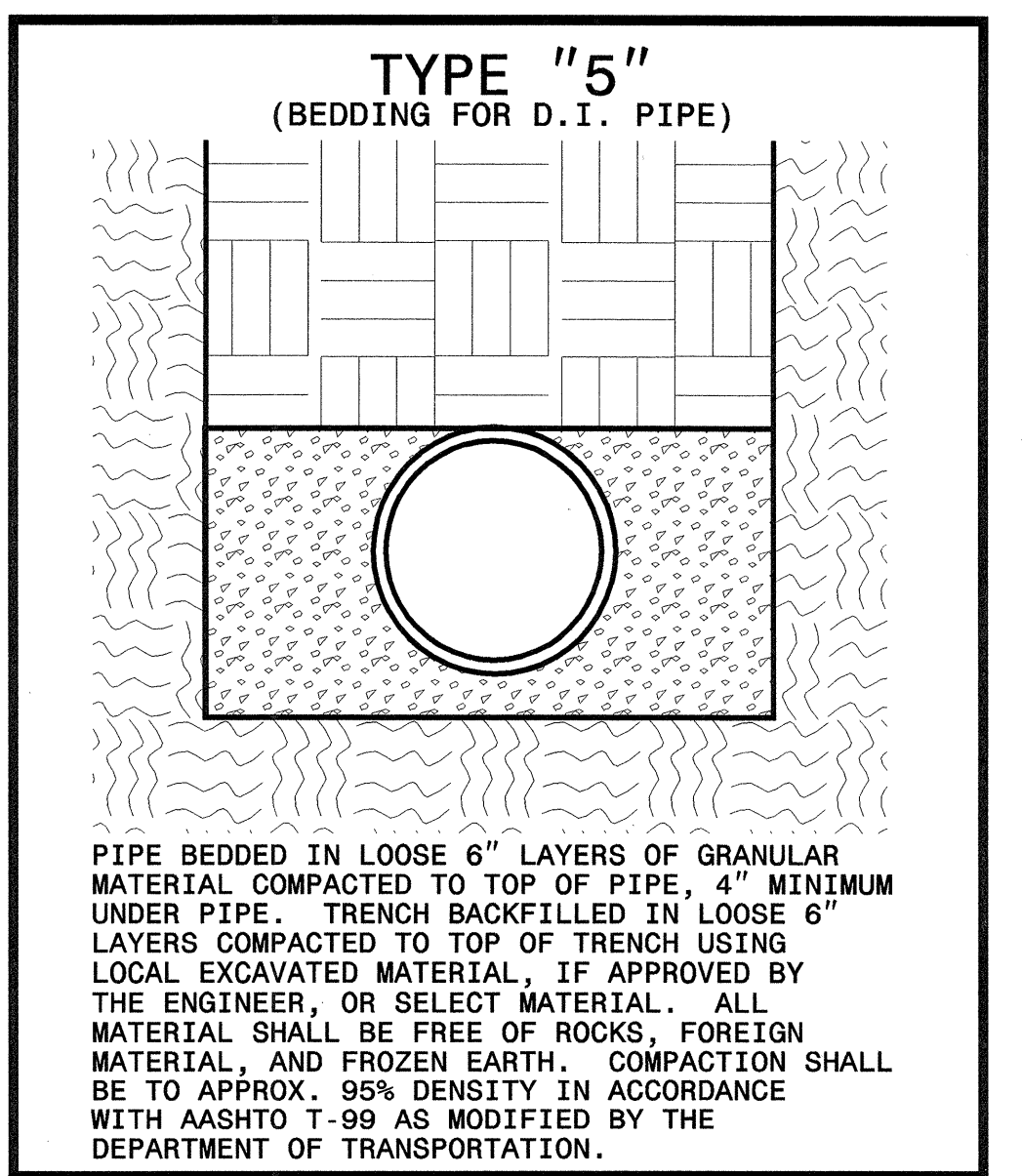
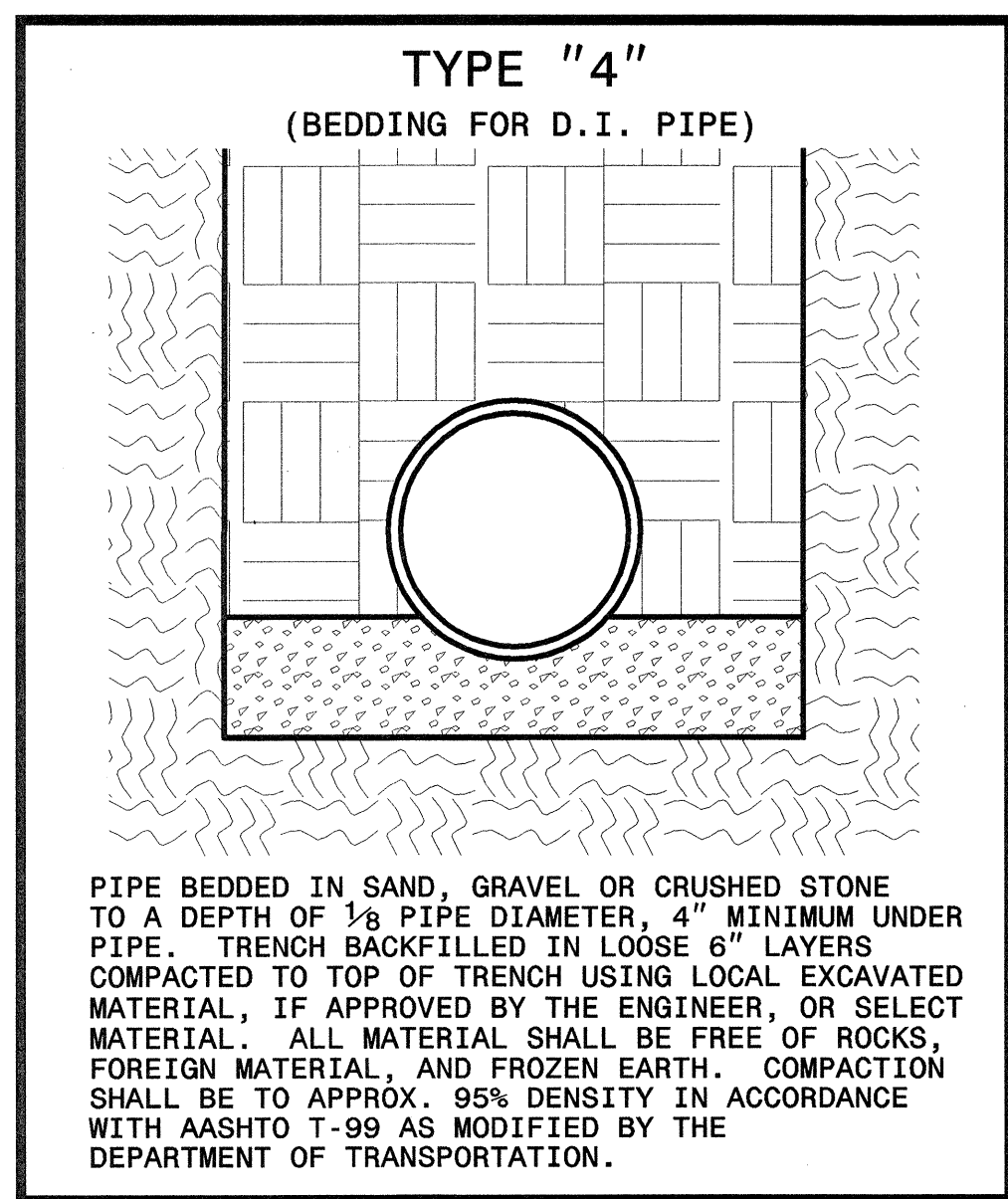
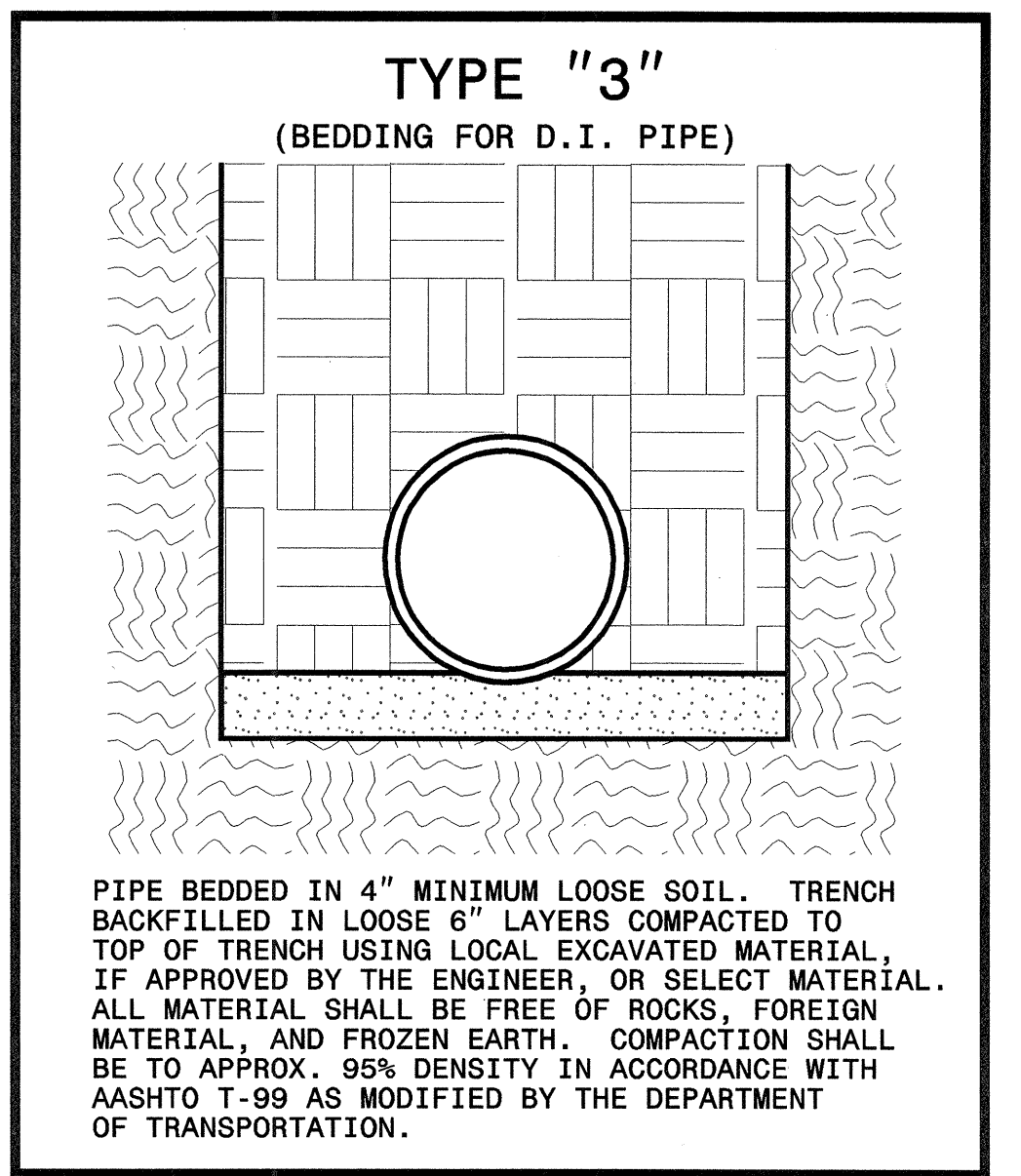
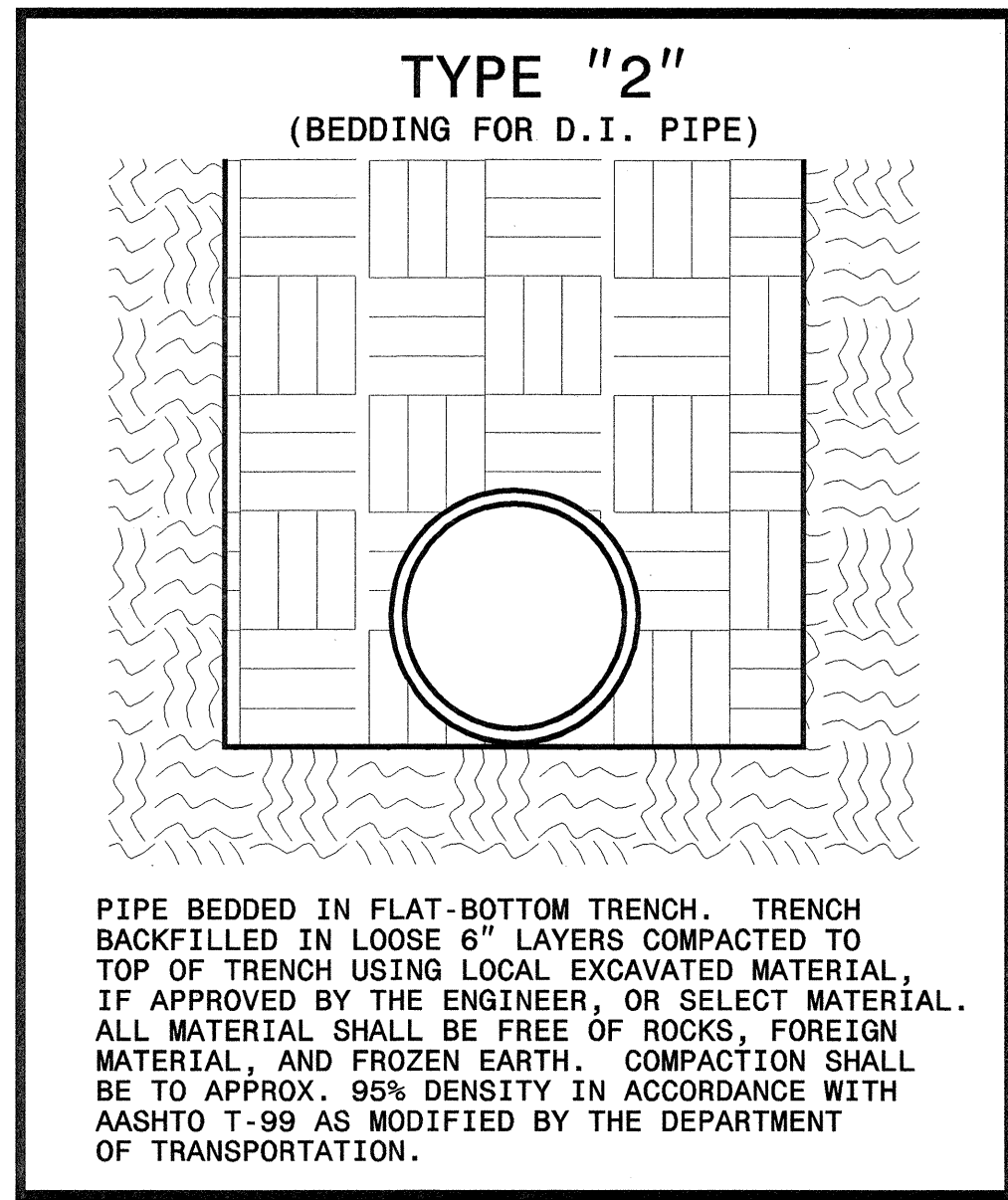
NOMINAL PIPE SIZE (INCHES)	TRENCH WIDTH (INCHES)	NOMINAL PIPE SIZE (INCHES)	TRENCH WIDTH (INCHES)
4	28	20	44
6	30	24	48
8	32	30	54
10	34	36	60
12	36	42	66
14	38	48	72
16	40	54	78
18	42		



WATER METER RELOCATION DETAIL



RECONNECT EXISTING WATER METER DETAIL



MANHOLE VENT PIPE

TIP: B-3509

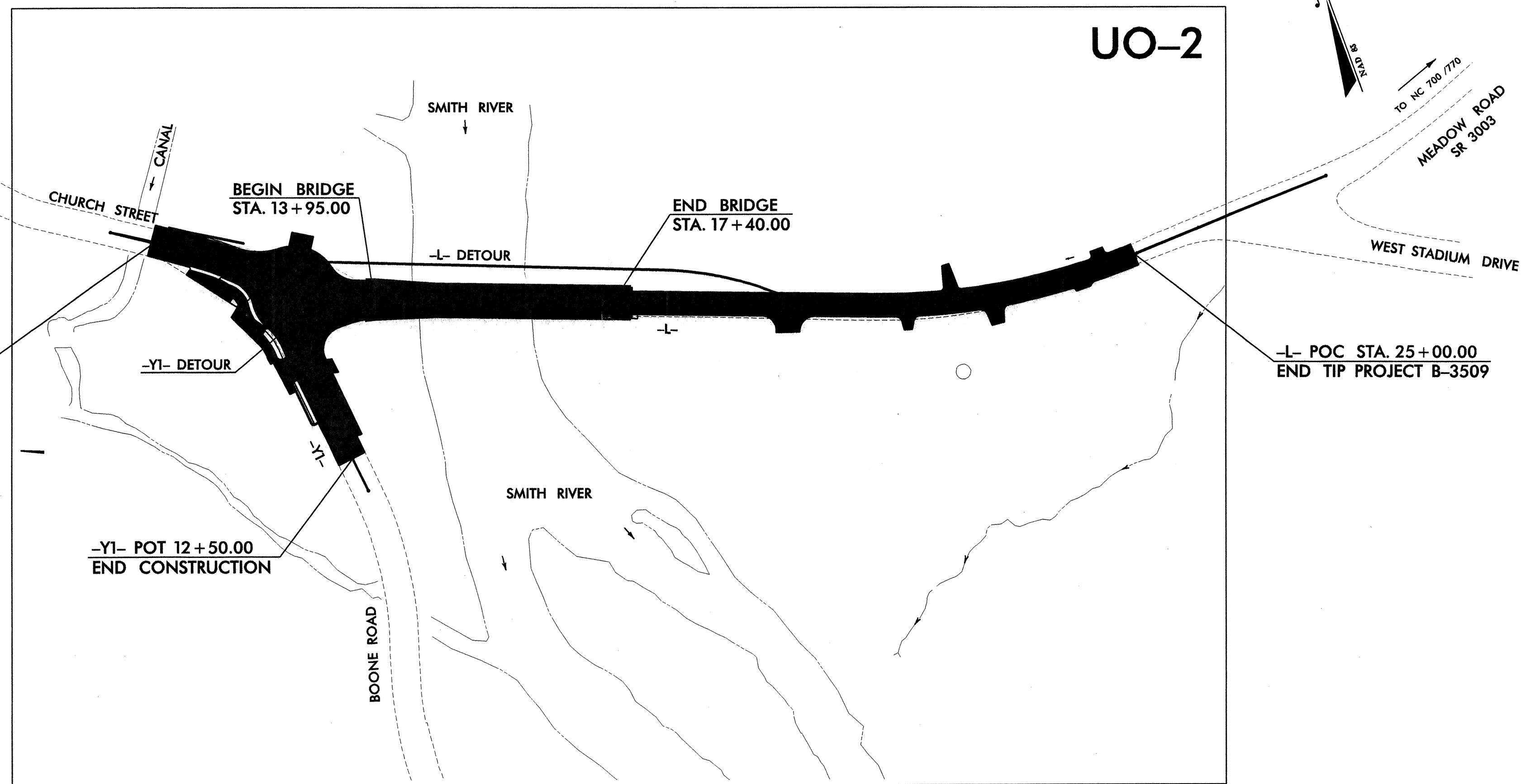
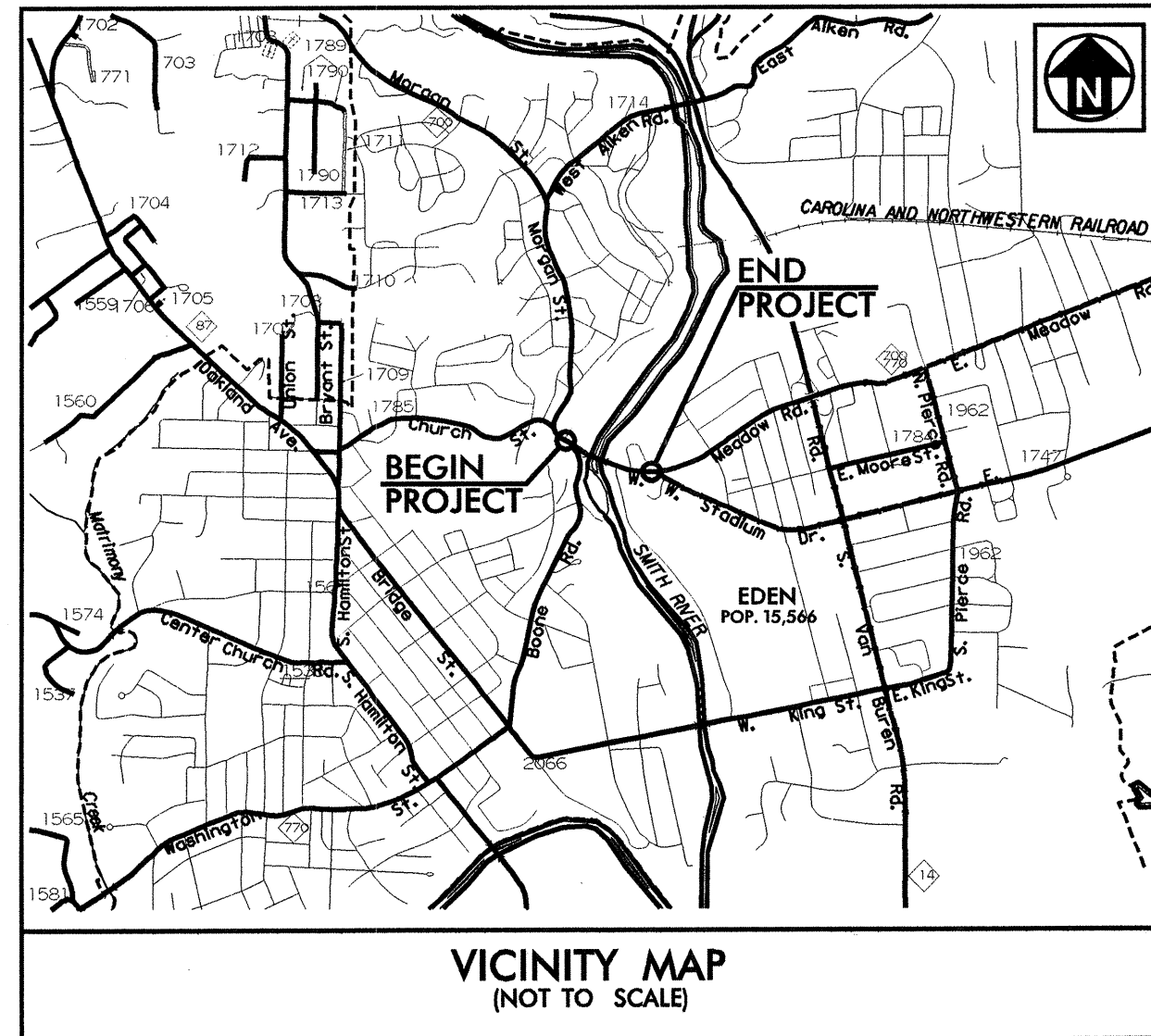
CONTRACT: C201290

T.I.P. NO.	SHEET NO.
B-3509	UO-1

STATE OF NORTH CAROLINA
DIVISION OF HIGHWAYS

ROCKINGHAM COUNTY

LOCATION: BRIDGE NO. 75 OVER SMITH RIVER AND APPROACHES ON SR 3003 (MEADOW ROAD)
TYPE OF WORK: UTILITIES



THIS PROJECT IS WITHIN THE MUNICIPAL BOUNDARY OF EDEN

INDEX OF SHEETS

<u>SHEET NO.</u>	<u>DESCRIPTION</u>
UO-1	TITLE SHEET
UO-2	UTILITIES BY OTHERS PLAN SHEET

UTILITY OWNERS ON PROJECT

- (1) DUKE ENERGY (POWER TRANSMISSION)
- (2) DUKE ENERGY (POWER DISTRIBUTION)
- (3) SPRINT COMMUNICATIONS (TELEPHONE)
- (4) PIEDMONT NATURAL GAS (GAS)
- (5) TIME WARNER (CATV)

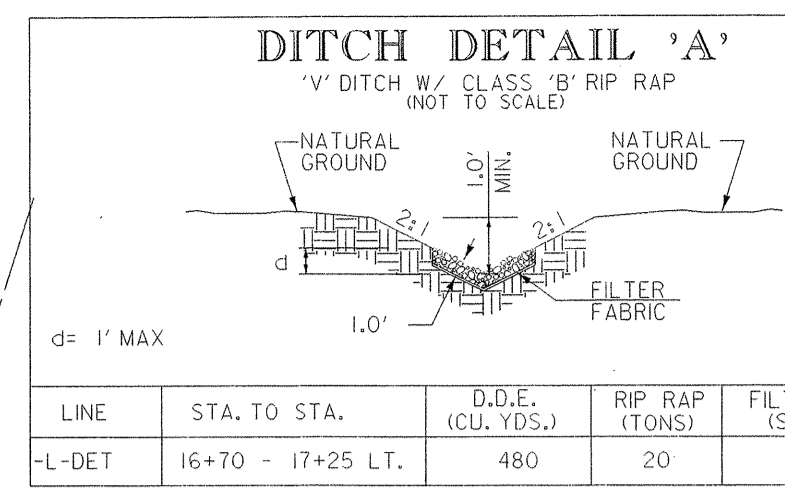


PREPARED IN THE OFFICE OF:
**DAVIS-MARTIN-POWELL
AND ASSOCIATES, INC.**
6415 OLD PLANK ROAD
HIGH POINT, NC 27265
PHONE (336) 886-4821
FAX (336) 886-4458

Randy McNeill, P.E. UTILITIES PROJECT MANAGER
Andy Larrick, P.E. UTILITIES PROJECT ENGINEER
Ralph Lowe UTILITIES PROJECT DESIGNER

UTILITIES BY OTHERS

NOTE: ALL PROPOSED UTILITY WORK SHOWN ON THIS SHEET WILL BE DONE BY OTHERS

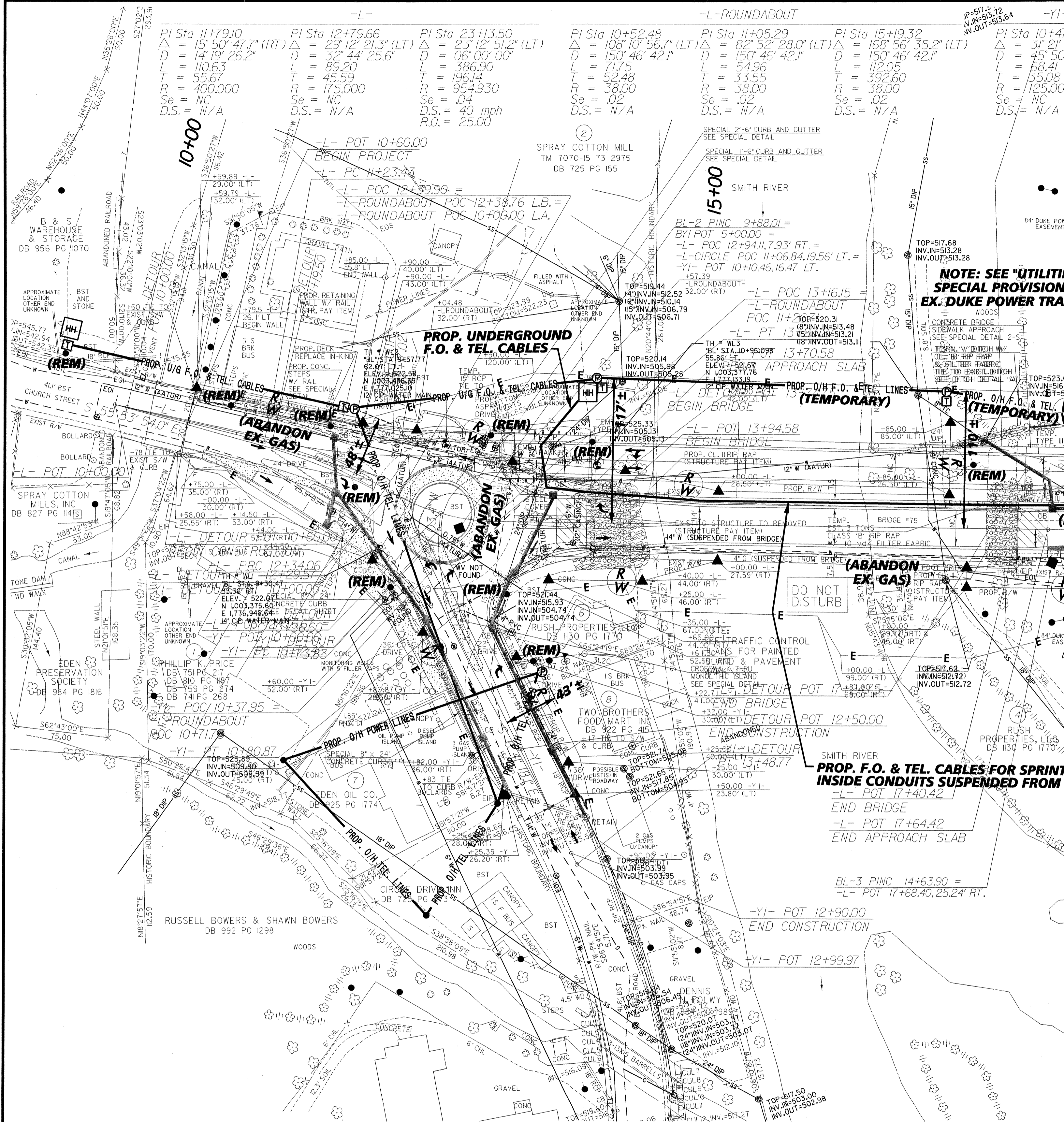


- LEGEND**
- HH PROPOSED TELEPHONE HAND HOLE
 - TT PROPOSED TELEPHONE PEDESTAL
 - ⊕ PROPOSED POWER / TELEPHONE POLE
 - ⊙ PROPOSED LIGHT POLE

LINE	STA. TO STA.	D.D.E. (CU. YDS.)	RIP RAP (TONS)	FILTER FABRIC (SQ. YDS.)
-L-DET	16+70 - 17+25 LT.	480	20	58

NOTE: 6" DIAMETER PVC DECK DRAINS ARE RECOMMENDED 12" ON CENTER FROM -L- STA.16+32 TO -L- STA.17+40 LT. & RT. A CLOSED SYSTEM WILL BE REQUIRED FROM -L- STA.13+93 TO -L- STA.16+32 LT. & RT. WITH INLETS 12" ON CENTER.

FOR -L-, -L-ROUNDABOUT, & -YI- PROFILES, SEE SHEET 5
 FOR -L-ROUNDABOUT DETAIL SHEET, SEE SHEET 2-D
 FOR -L-DETOUR SEE SHEET 2-C
 FOR SPECIAL DETAIL OF CROSSWALK THRU MONOLITHIC ISLAND, SEE SHEET 2-P
 FOR SPECIAL DETAIL OF 1'-6" CURB AND GUTTER, SEE SHEET 2-R
 FOR SPECIAL DETAIL OF CONCRETE BRIDGE SIDEWALK APPROACH, SEE SHEET 2-T
 FOR SPECIAL DETAIL OF CONCRETE STEPS W/ RAIL, SEE SHEET 2-T
 FOR SPECIAL DETAIL OF RETAINING WALL W/ RAIL, SEE SHEET W-1 THRU W-4
 FOR SPECIAL DETAIL OF BRIDGE S-1 THRU S-5



NOTE: SEE "UTILITIES BY OTHERS" SPECIAL PROVISIONS REGARDING EX. DUKE POWER TRANSMISSION LINE

PROP. F.O. & TEL. CABLES FOR SPRINT INSIDE CONDUITS SUSPENDED FROM BRIDGE
 -L- POT 17+40.42
 END BRIDGE
 -L- POT 17+64.42
 END APPROACH SLAB

PROP. (2) 4" CONDUITS FOR UNDERGROUND F.O. & TEL. CABLES

