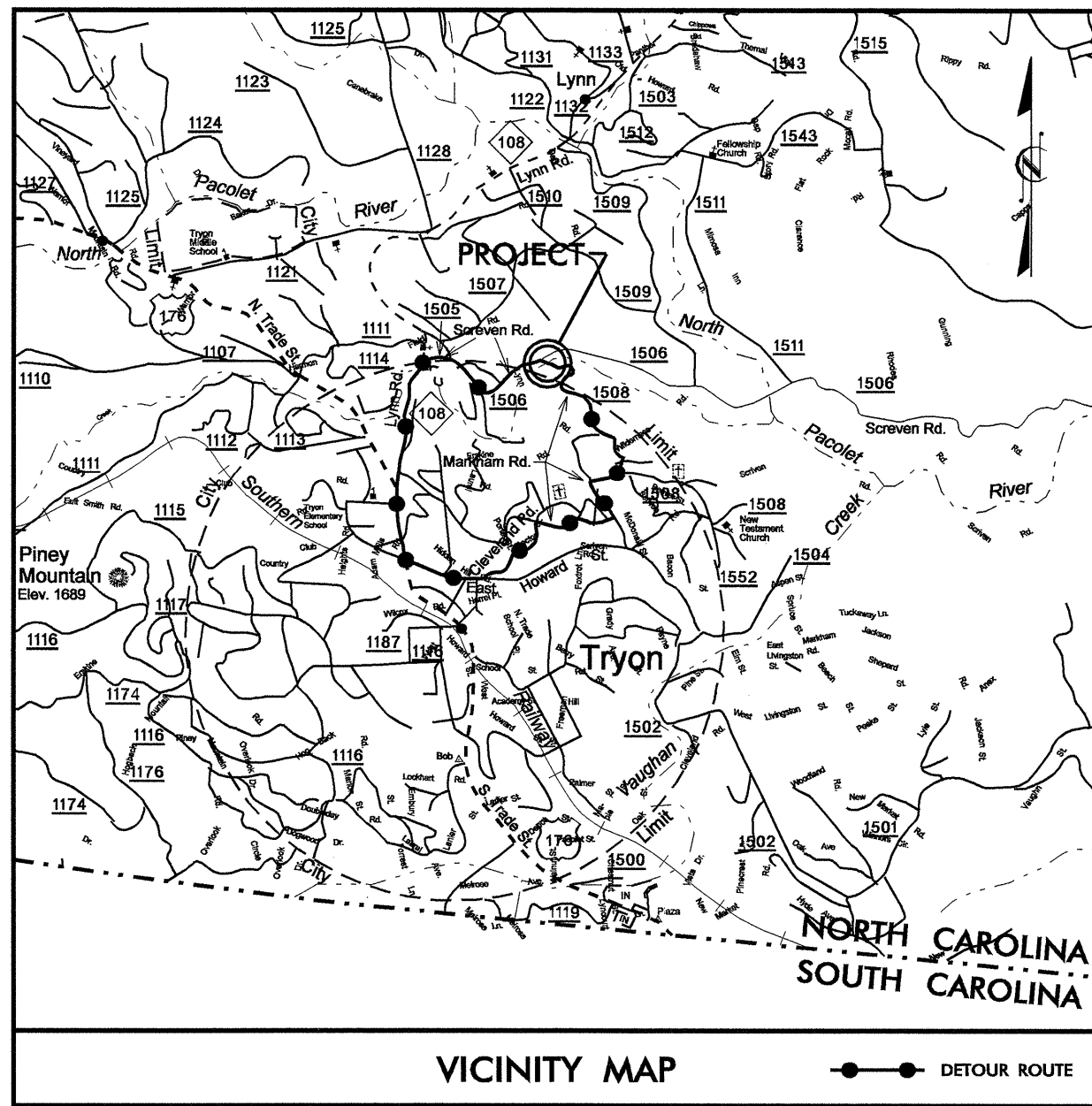


See Sheet 1-A For Index of Sheets



STATE OF NORTH CAROLINA  
DIVISION OF HIGHWAYS

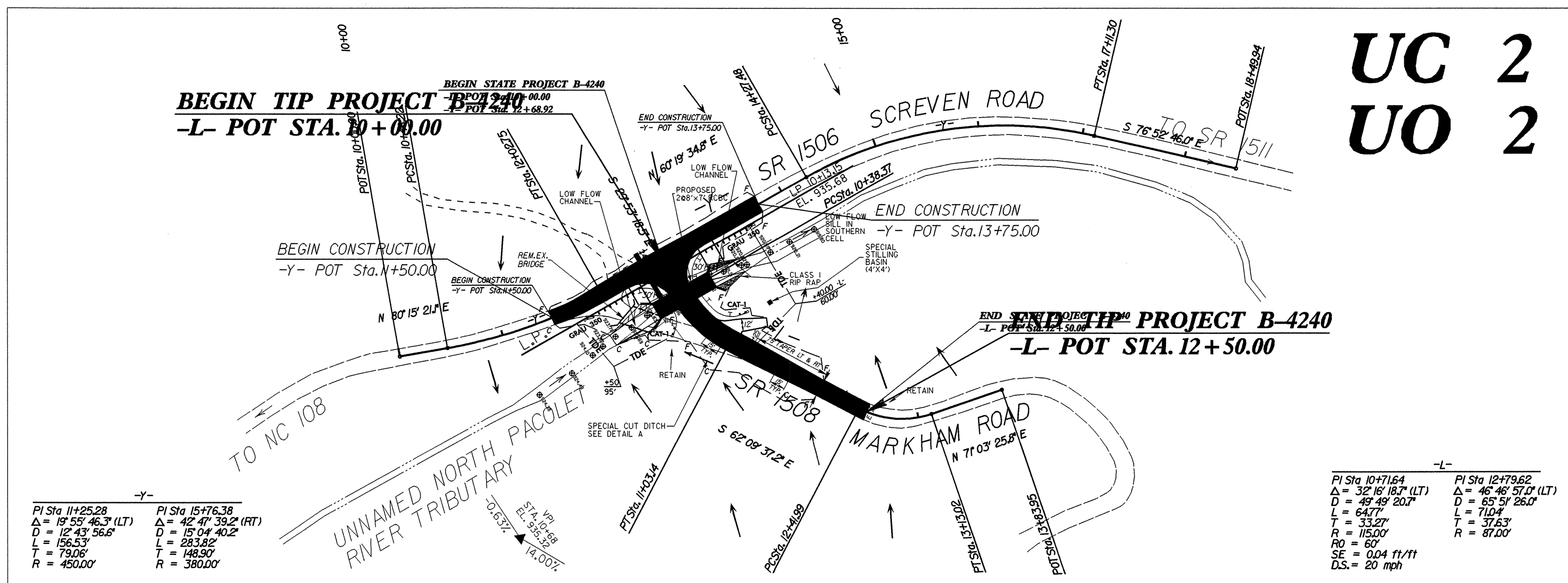
T.I.P. NO.	SHEET NO.
B-4240	UC-1

**UTILITY CONSTRUCTION PLANS**  
**POLK COUNTY**

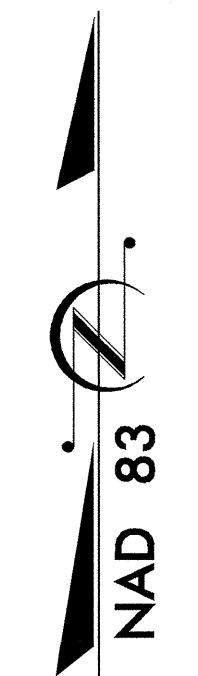
**LOCATION: BRIDGE #193 OVER UNNAMED NORTH PACOLET RIVER  
TRIBUTARY ON SR 1508 (MARKHAM ROAD) AND  
APPROACHES**

**TYPE OF WORK: SEWER AND WATER RELOCATIONS**

**TIP: B-4240**



**UC 2**  
**UO 2**



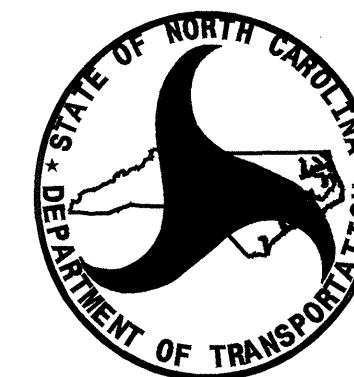
**2002 STANDARD  
SPECIFICATIONS  
FOR ROADWAYS  
AND STRUCTURES**

<b>INDEX OF SHEETS</b>	
<u>SHEET NO.</u>	<u>DESCRIPTION</u>
UC-1	TITLE SHEET
UC-2	UTILITY CONSTRUCTION PLAN SHEET
UC-3	DETAILS AND PROFILE SHEET

**WATER AND SEWER OWNERS ON PROJECT**

- (1) WATER - TOWN OF TRYON
- (2) SANITARY SEWER - TOWN OF TRYON

SEAL



PREPARED IN THE OFFICE OF:  
**DIVISION OF HIGHWAYS  
DESIGN SERVICES  
UTILITY SECTION**  
1591 MAIL SERVICES CENTER  
RALEIGH NC 27699-1591  
PHONE (919) 250-4128  
FAX (919) 250-4119

**R. G. WORTHINGTON, P.E.** UTILITIES SECTION ENGINEER  
**R. B. WILKINS, P.E.** UTILITIES SQUAD LEADER PROJECT ENGINEER  
**JOHN A. NIGRO, P.E.** UTILITIES PROJECT DESIGNER

5/14/99  
 28-FEB-2006 16:03  
 r:\utilities\cdu\proj\4240\uc2.dgn  
 uc2 - AT 18212416

PROP 392' - 10" PVC SEWER PIPE, SDR 21  
 2 - 4' DIAMETER PRECAST CONCRETE SEWER MANHOLE, 0 - 6' DEPTH  
 1 - 4' DIAMETER PRECAST CONCRETE FALSE BOTTOM MANHOLE, 0 - 6' DEPTH  
 8' - PRECAST CONC. MANHOLE WALL, 4' DIA, OVER 6' HT.  
 2 - SANITARY SEWER CLEANOUT  
 30' - 4" PVC SEWER PIPE, SDR 21  
 CONNECT USING NECESSARY FITTINGS

PROP. 211' - 2" PVC WATER PIPE, SDR 13.5, 315# WP  
 PROP. 4 - 2" PVC 45° BENDS  
 PROP. 3' - 3/4" COPPER WATER PIPE, TYPE K  
 PROP. 1 - 3/4" CORPORATION STOP  
 PROP. 1 - 2" X 3/4" TAPPING SADDLE  
 CONNECT USING NECESSARY FITTINGS

PROP. MH "B1" (4' DIA. FALSE BOTTOM)  
 STA. 0+37.192 LINE 1  
 STA. 13+15.678 -Y-  
 24.822 RT.

PROP. MH "A1" (4' DIA.)  
 STA. 0+00.00 LINE 1  
 STA. 13+12.160 -Y-  
 61.847 RT.

PROP. 201' - REMOVE ABANDONED 10" PIPE

EXIST. MH D1 (4' DIA.)  
 STA. 4+29.532 LINE 1  
 STA. 10+00 -Y-  
 1.304 LT.

PROP 37' - 12" DI RIGID RESTRAINED JOINT SEWER PIPE, CLASS PC 350

MANHOLE C1 4' DIA.  
 STA 2+28.356 LINE 1  
 STA 11+26.734 -Y- LINE  
 3.240 LT

PROP - 1 - FIRE HYDRANT EXTENSION

PROP 96' - FILL OR REMOVE ABANDONED 10" PIPE, VC SEWER  
 103' - FILL OR REMOVE ABANDONED 12" PIPE, DI SEWER  
 1 - BREAKDOWN, PLUG, FILL ABANDONED UTILITY MANHOLE

-Y-  
 PI Sta 11+25.28      PI Sta 15+76.38  
 $\Delta = 19^{\circ} 55' 46.3" (LT)$        $\Delta = 42^{\circ} 47' 39.2" (RT)$   
 $D = 12^{\circ} 43' 56.6"$        $D = 15^{\circ} 04' 40.2"$   
 $L = 156.53'$        $L = 283.82'$   
 $T = 79.06'$        $T = 148.90'$   
 $R = 450.00'$        $R = 380.00'$

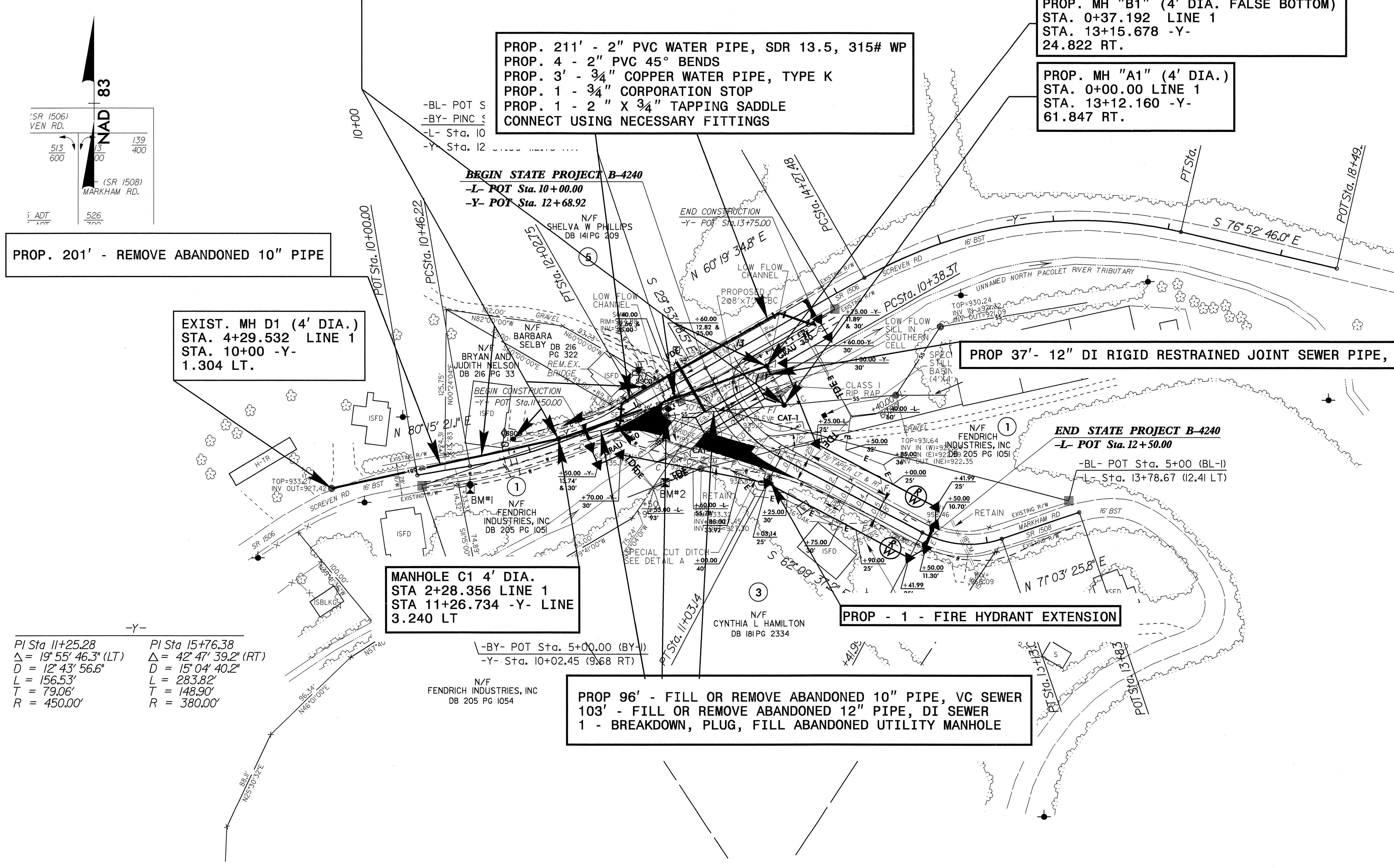
-BY- POT Sta. 5+00.00 (BY-I)  
 -Y- Sta. 10+02.45 (9.68 RT)

SEE SHEETS C-1 THRU C-5 FOR C

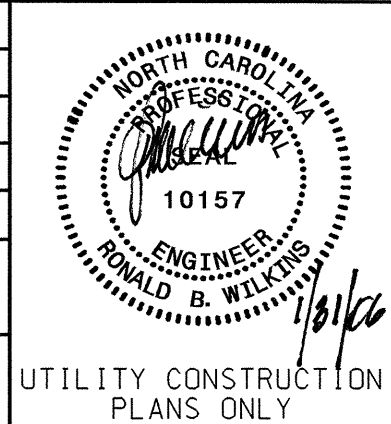
-L-  
 PI Sta 10+71.64      PI S  
 $\Delta = 32^{\circ} 16' 18.7" (LT)$        $\Delta =$   
 $D = 49^{\circ} 49' 20.7"$        $D =$   
 $L = 64.77'$        $L =$   
 $T = 33.27'$        $T =$   
 $R = 115.00'$        $R =$   
 $RO = 60'$   
 $SE = 0.04 \text{ ft/ft}$   
 $D.S. = 20 \text{ mph}$

PROJECT REFERENCE NO.	SHEET NO.
B-4240	UC-2
DESIGNED BY: JAN	
DRAWN BY: JAN	
CHECKED BY: RBW	
APPROVED BY: RBW	
REVISED:	
NORTH CAROLINA DEPARTMENT OF TRANSPORTATION	
PROJECT SERVICES UNIT PHONE: (919) 250-4128 FAX: (919) 250-4119	
UTILITY CONSTRUCTION PLANS ONLY	

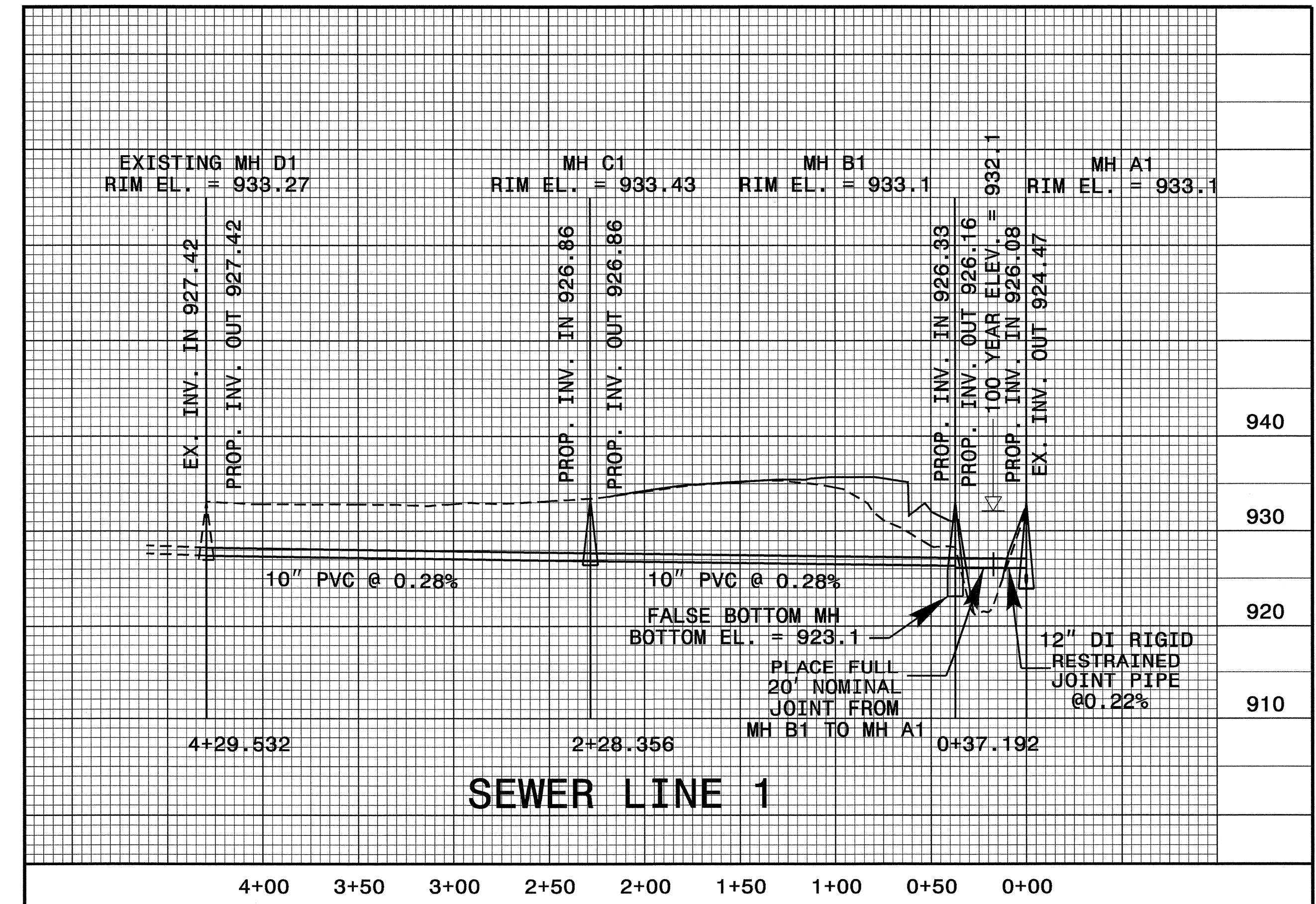
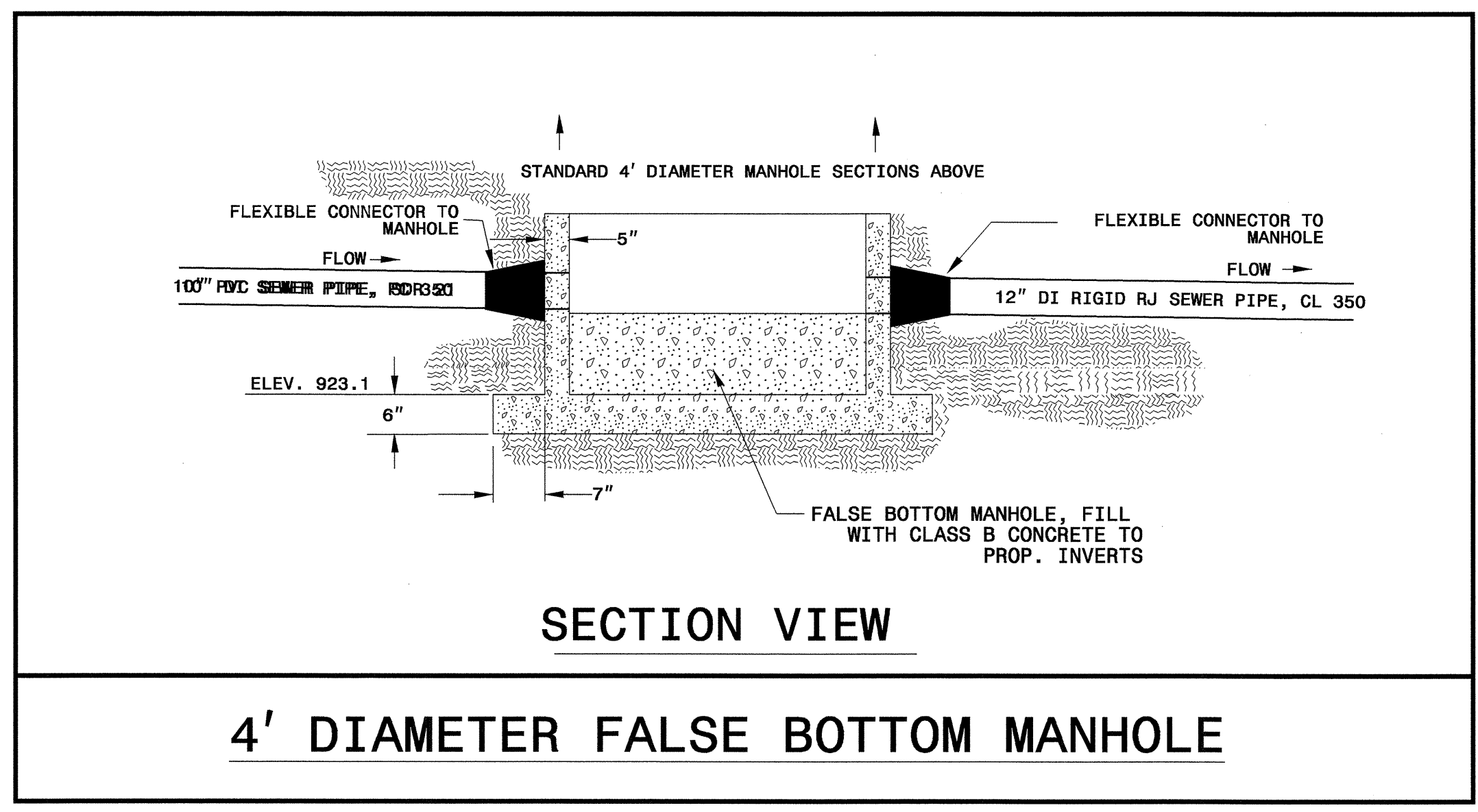
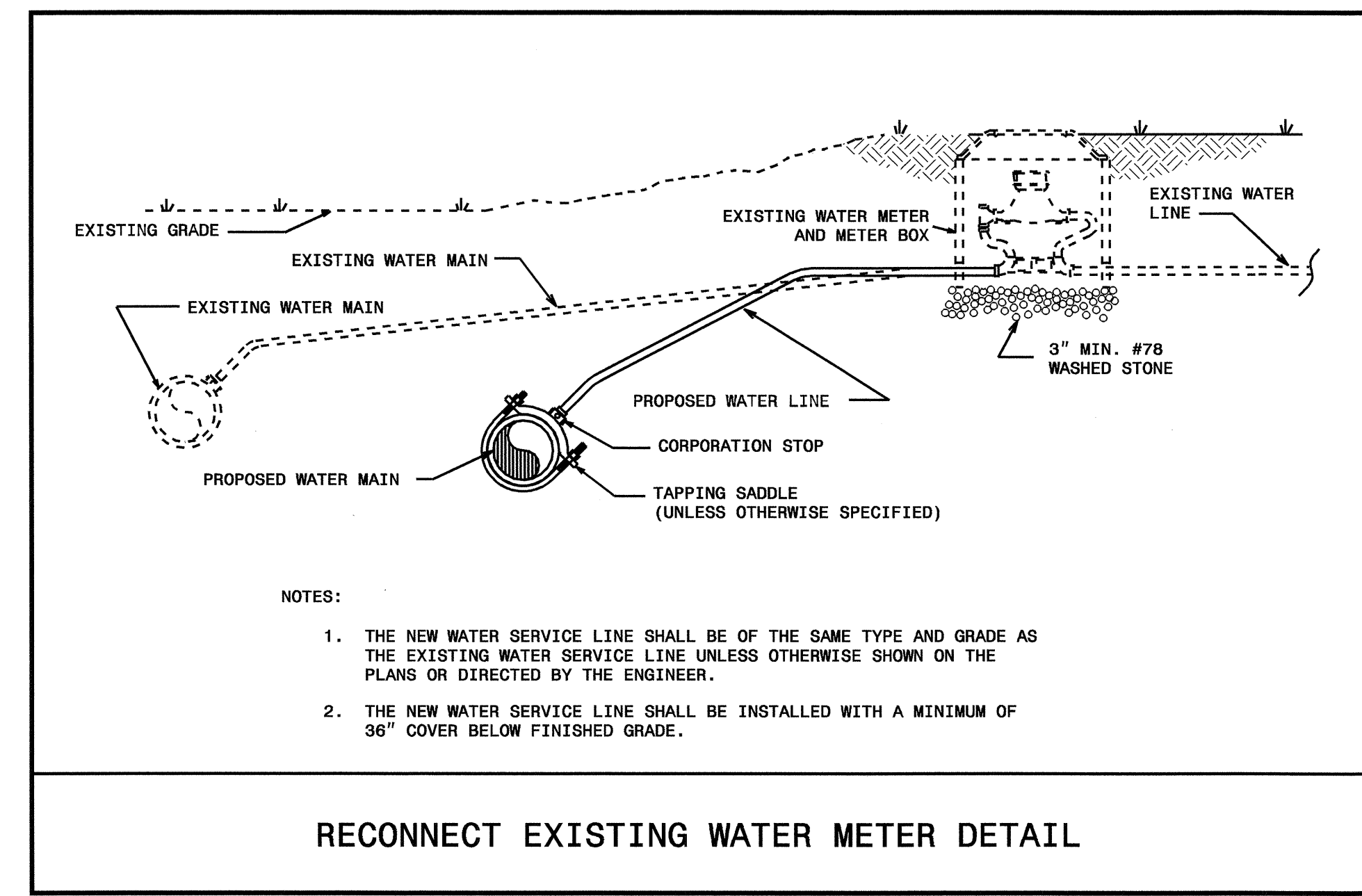
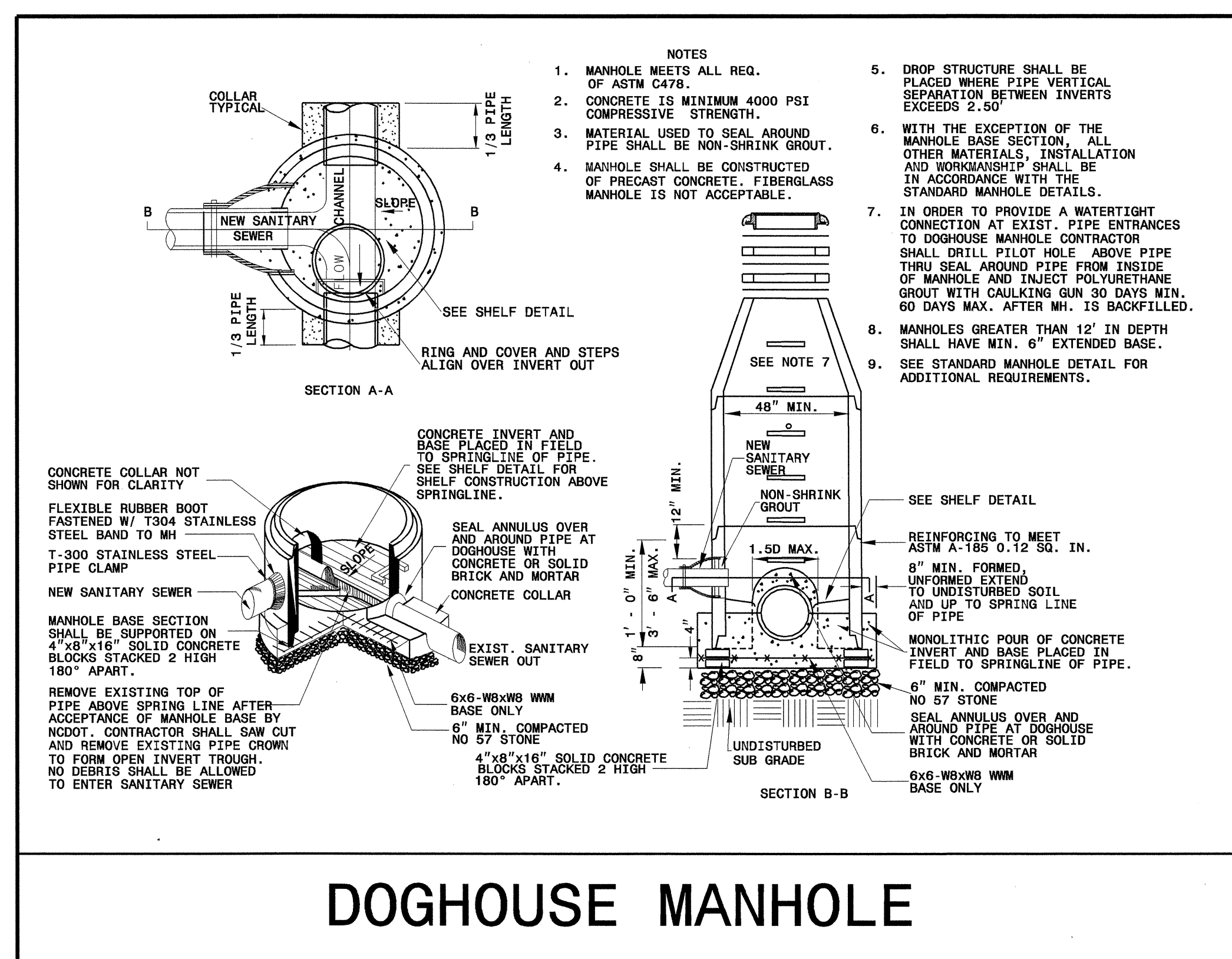
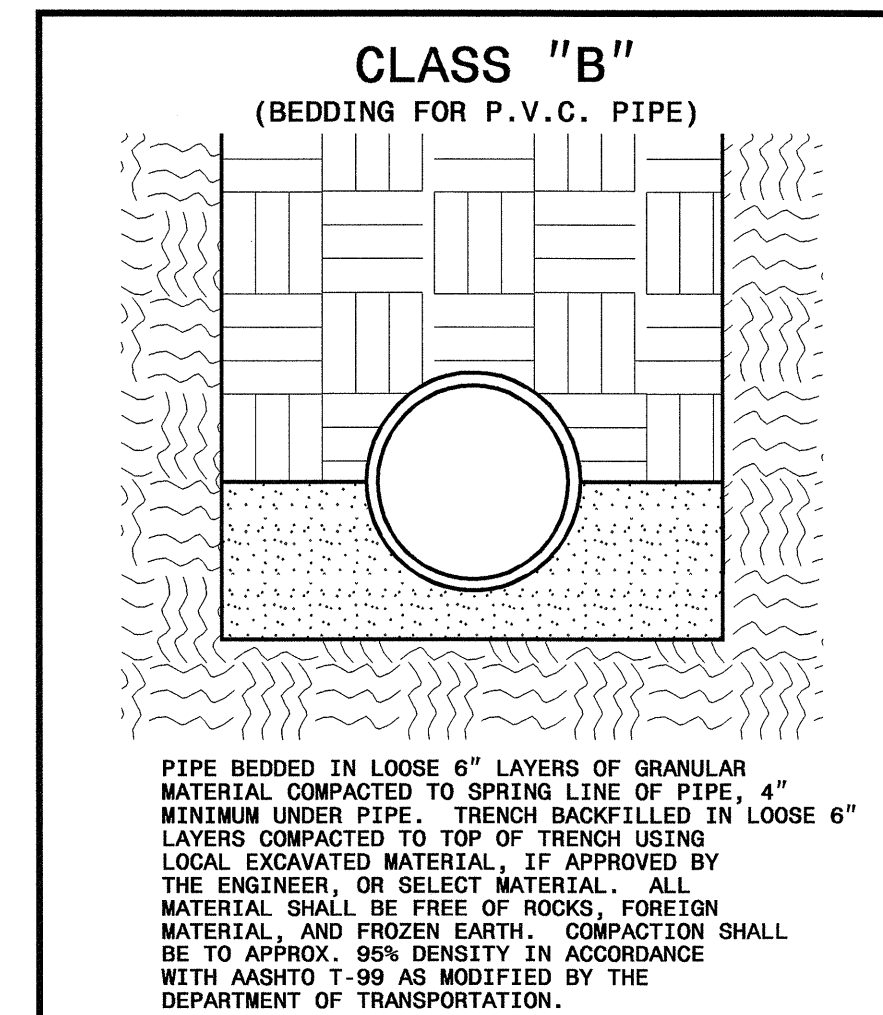
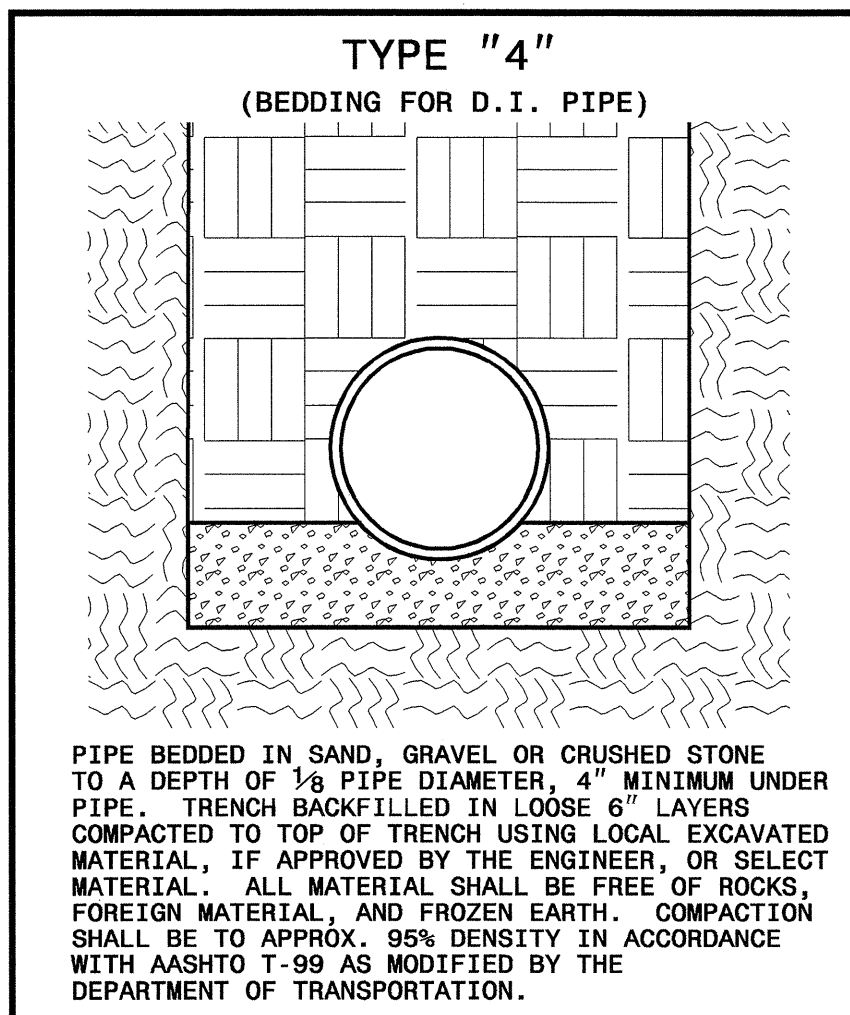
UTILITY CONSTRUCTION

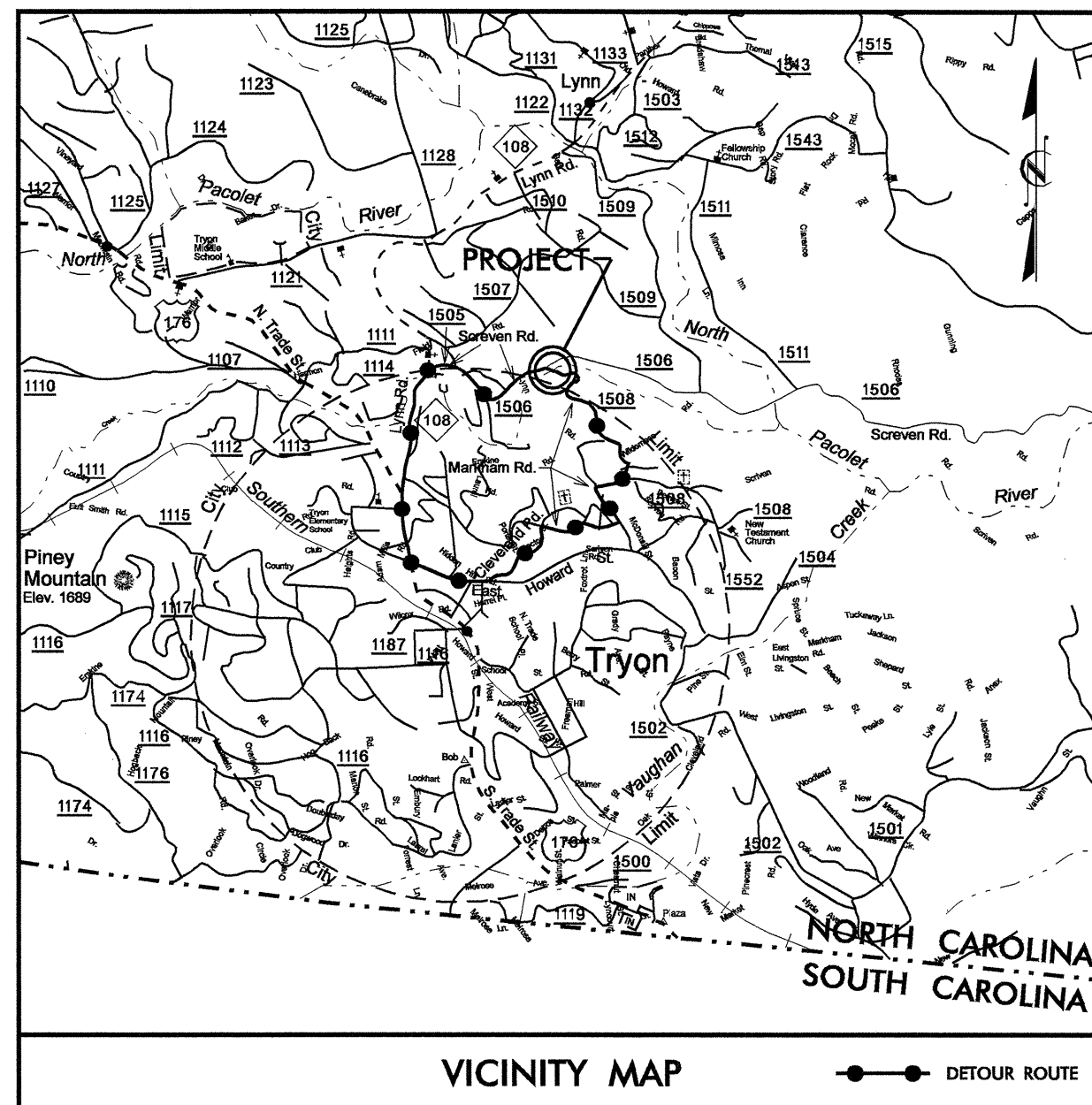






**UTILITY CONSTRUCTION**





STATE OF NORTH CAROLINA  
DIVISION OF HIGHWAYS

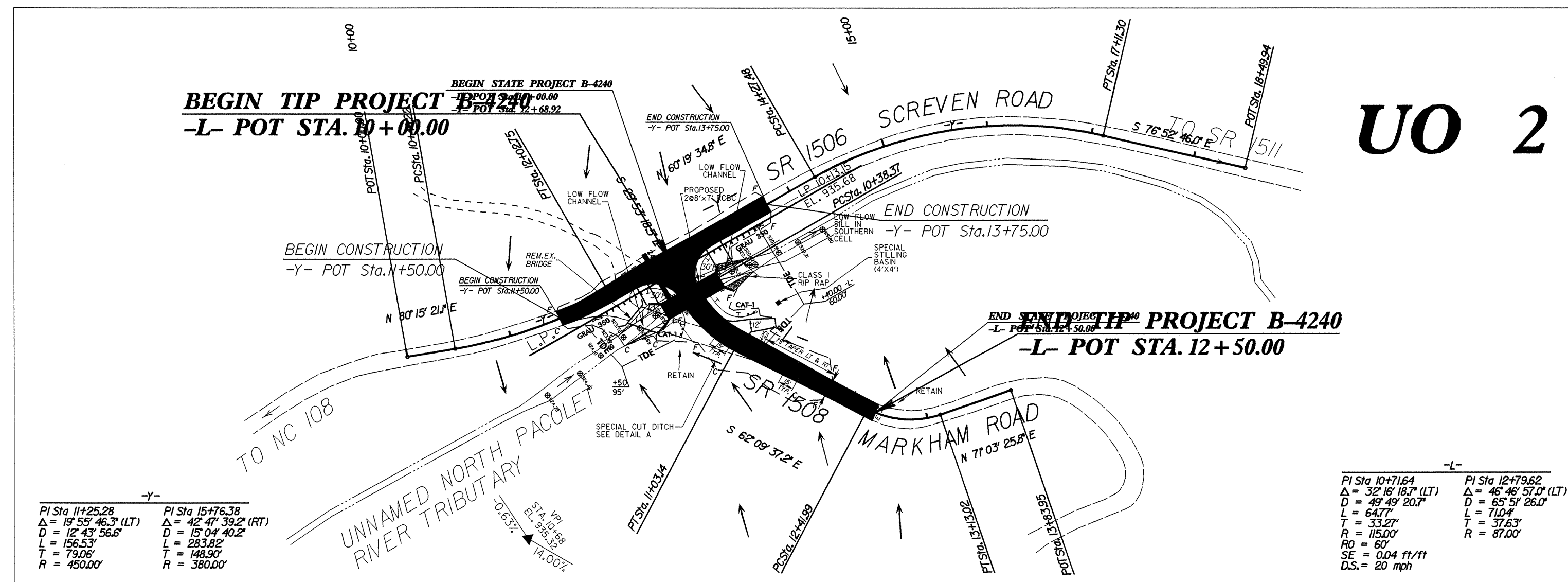
T.I.P. NO.	SHEET NO.
B-4240	UO-1

**UTILITY CONSTRUCTION PLANS**  
**POLK COUNTY**

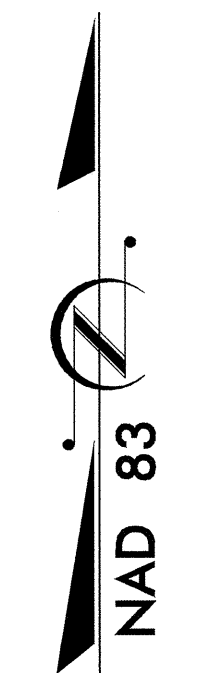
**LOCATION: BRIDGE #193 OVER UNNAMED NORTH PACOLET RIVER  
TRIBUTARY ON SR 1508 (MARKHAM ROAD) AND  
APPROACHES**

**TYPE OF WORK: UTILITY RELOCATIONS**

**TIP: B-4240**



**UO 2**



**2002 STANDARD SPECIFICATIONS FOR ROADWAYS AND STRUCTURES**

INDEX OF SHEETS	
SHEET NO.	DESCRIPTION
UO-1	TITLE SHEET
UO-2	UTILITIES BY OTHERS PLAN SHEET

- UTILITY OWNERS ON PROJECT**
- (1) CABLE TV CHARTER COMMUNICATION
  - (2) POWER DISTRIBUTION DUKE ENERGY
  - (3) TELEPHONE ALLTEL

PREPARED IN THE OFFICE OF:  
**DIVISION OF HIGHWAYS  
DESIGN SERVICES  
UTILITY SECTION**

1591 MAIL SERVICES CENTER  
RALEIGH NC 27699-1591  
PHONE (919) 250-4128  
FAX (919) 250-4119

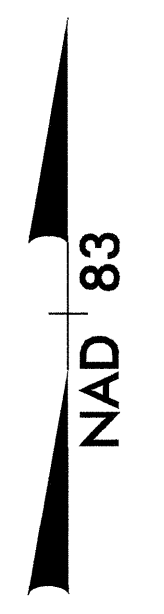
<b>R. G. WORTHINGTON, P.E.</b>	UTILITIES SECTION ENGINEER
<b>R. B. WILKINS, P.E.</b>	UTILITIES SQUAD LEADER PROJECT ENGINEER
<b>JOHN A. NIGRO, P.E.</b>	UTILITIES PROJECT DESIGNER



UTILITIES BY OTHERS

NOTE:  
ALL PROPOSED UTILITY WORK  
SHOWN ON THIS SHEET WILL  
BE DONE BY OTHERS

5/14/99



-Y-  
PI Sta 11+25.28  
Δ = 19° 55' 46.3" (LT)  
D = 12' 43' 56.6"  
L = 156.53'  
T = 79.06'  
R = 450.00'

PI Sta 15+76.38  
Δ = 42° 47' 39.2" (RT)  
D = 15' 04' 40.2"  
L = 283.82'  
T = 148.90'  
R = 380.00'

-BY- PINC Sta. 7+36.51 (BY-2)  
-L- Sta. 10+12.63 (31.97 RT)  
-Y- Sta. 12+37.00 (12.75 RT)

**BEGIN STATE PROJECT B-4240**  
-L- POT Sta. 10+00.00  
-Y- POT Sta. 12+68.92

-Y- Sta. 13+91.57 (11.17 RT)

**END STATE PROJECT B-4240**  
-L- POT Sta. 12+50.00

-BL- POT Sta. 5+00 (BL-)  
-L- Sta. 13+78.67 (12.41 LT)

-BY- POT Sta. 5+00.00 (BY-1)  
-Y- Sta. 10+02.45 (9.68 RT)

-L-  
PI Sta 10+71.64 Δ = 32° 16' 18.7" (LT)  
D = 49' 49' 20.7" L = 64.77'  
T = 33.27' R = 115.00'  
RO = 60' SE = 0.04 ft/ft  
D.S. = 20 mph

PI Sta 12+79.62 Δ = 46° 46' 57.0" (LT)  
D = 65' 51' 26.0" L = 71.04'  
T = 37.63' R = 87.00'