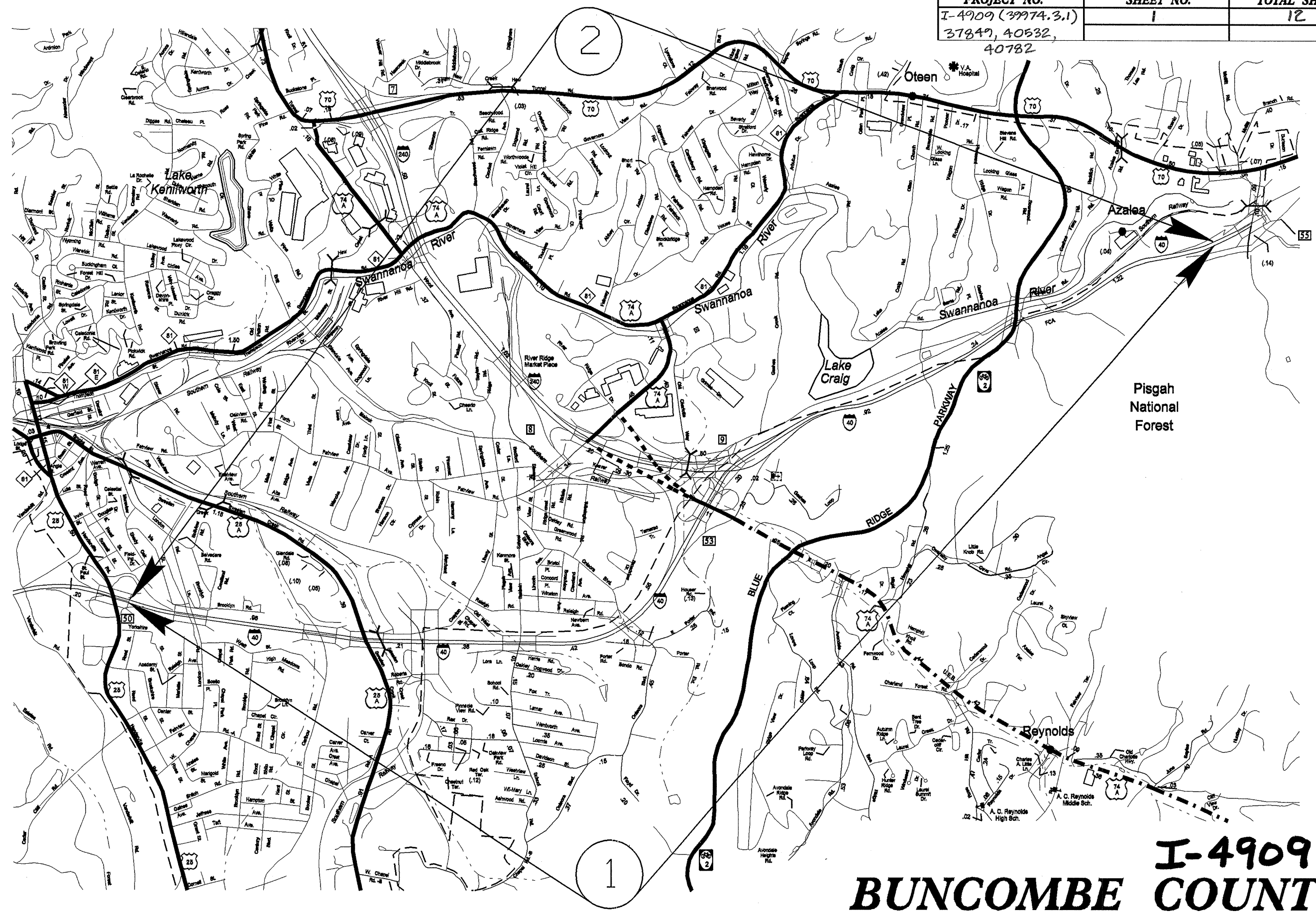
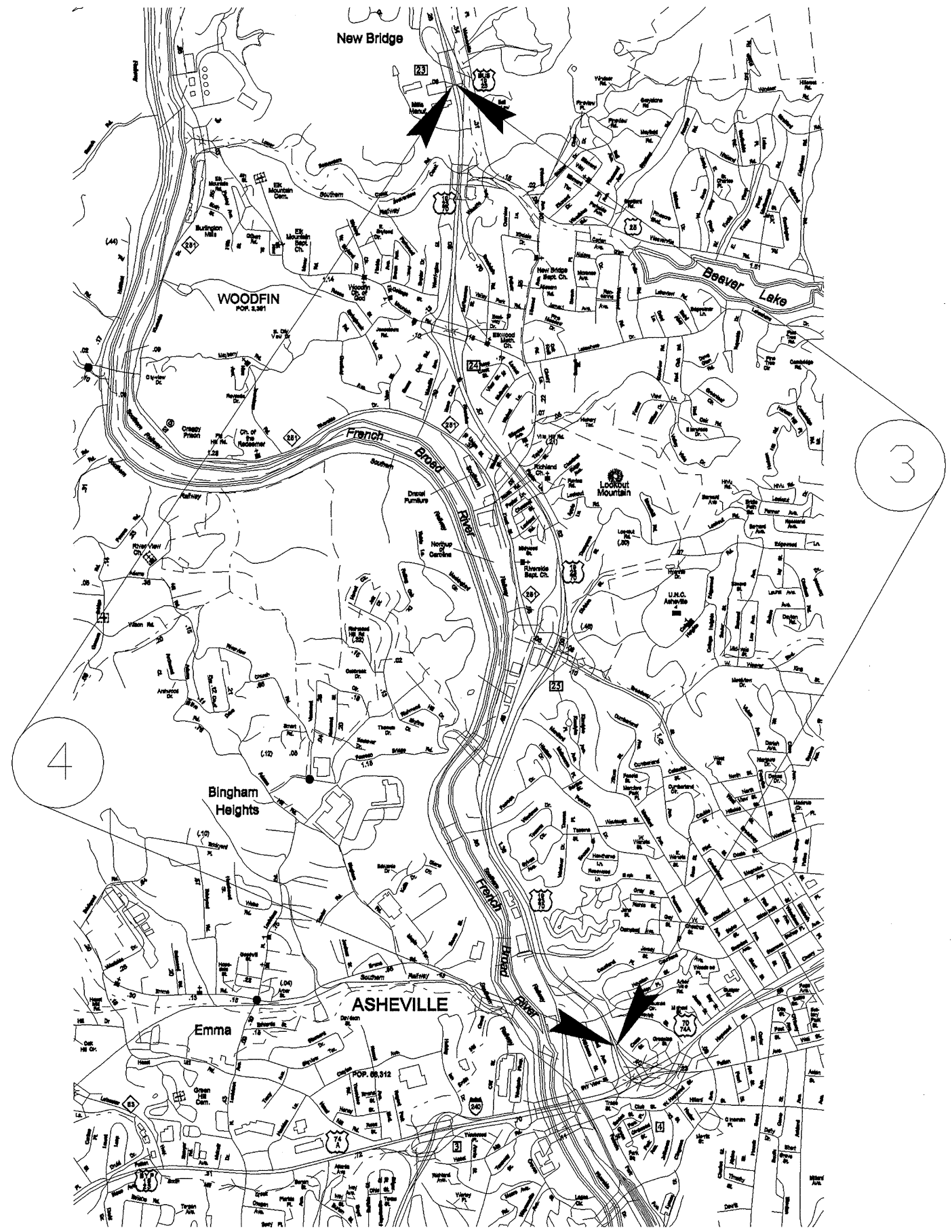


PROJECT NO.	SHEET NO.	TOTAL SHEETS
I-4909 (39974.3,1)	1	12
37849, 40532,		
40782		



I-4909
BUNCOMBE COUNTY

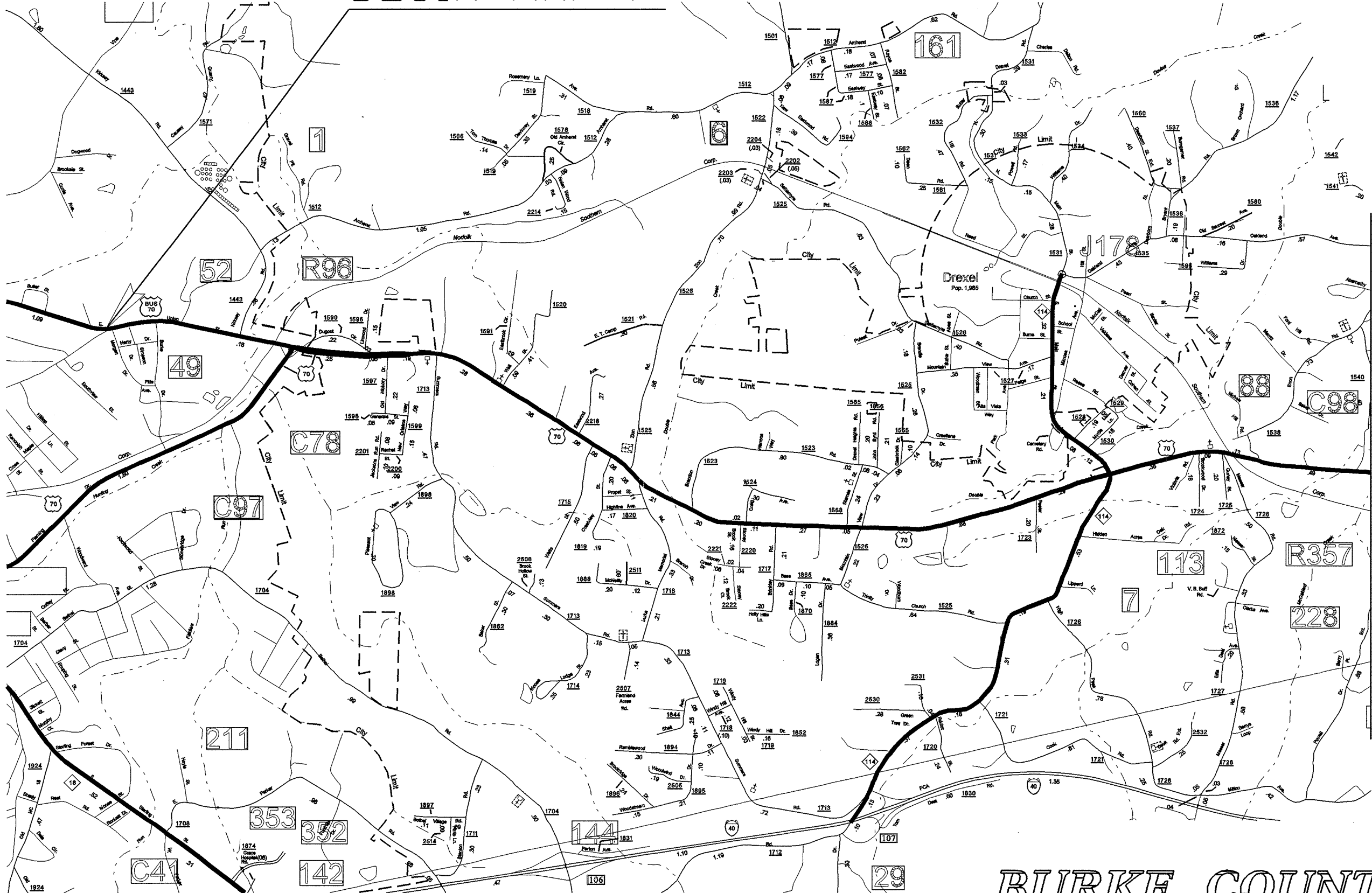
PROJECT NO.	SHEET NO.	TOTAL SHEETS
I-4909 (39974.3.1)	2	12
37849, 40532,		
40782		



BUNCOMBE COUNTY

PROJECT NO.	SHEET NO.	TOTAL SHEETS
39974.3.1, 40782	3	12
37849, 40532		

BEGIN MAP 7



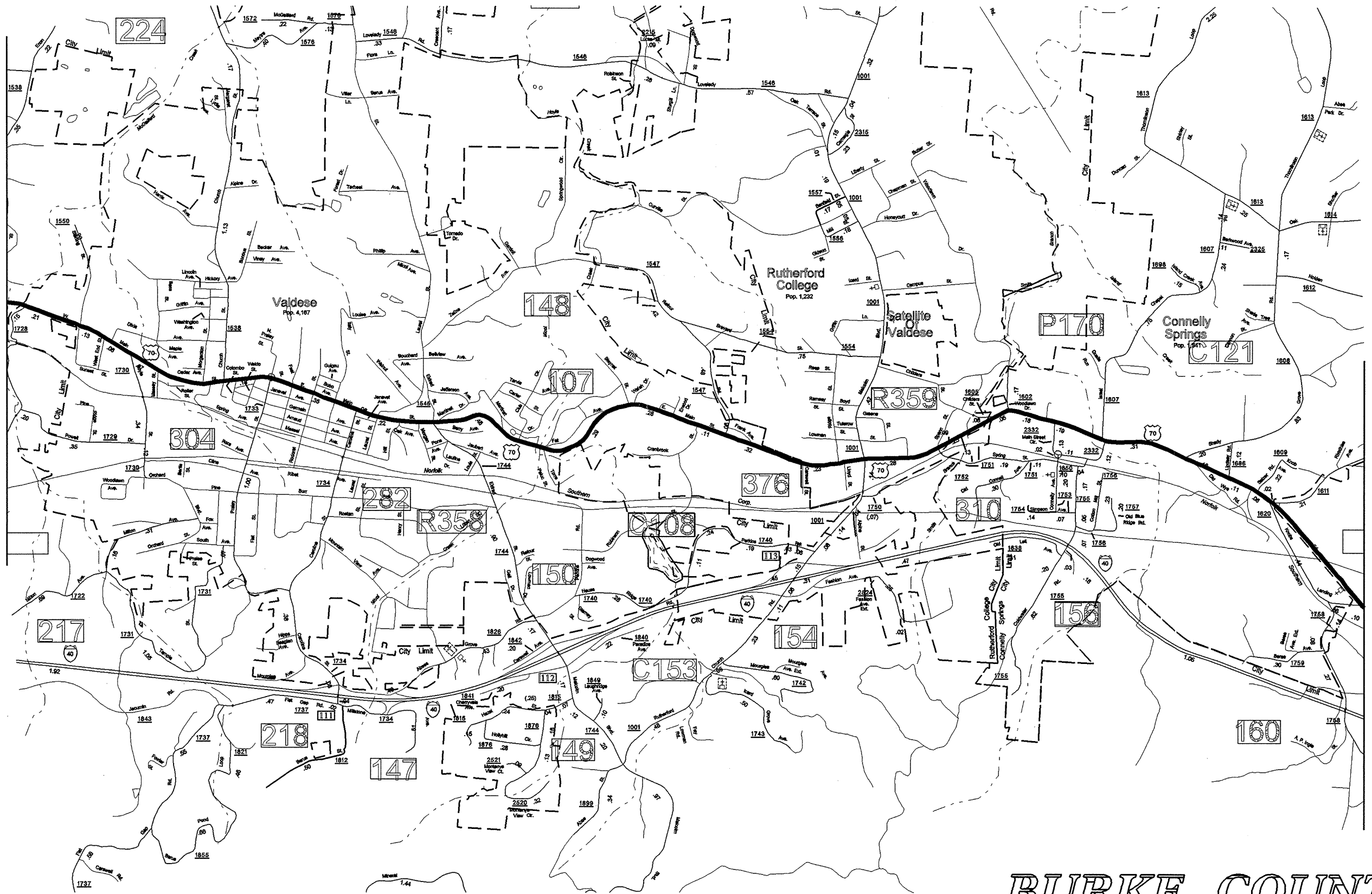
MATCH LINE
SEE SHEET 4

BURKE COUNTY

← CONTINUE MAP 7 →

PROJECT NO.	SHEET NO.	TOTAL SHEETS
39974.3.1, 40782	4	12
37849, 40532		

SEE SHEET 3
MATCH LINE



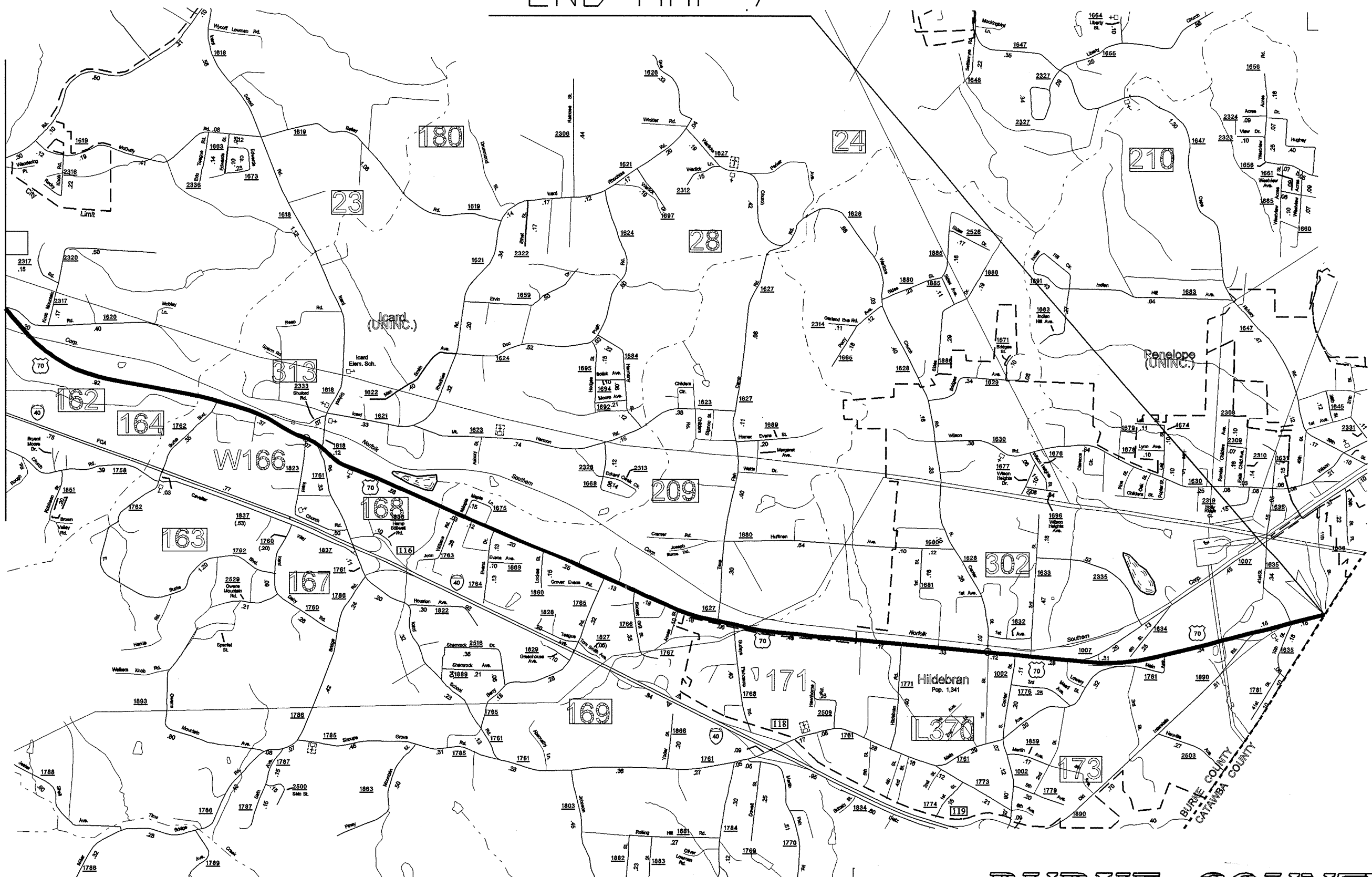
MATCH LINE
SEE SHEET 5

BURKE COUNTY

PROJECT NO.	SHEET NO.	TOTAL SHEETS
39974.3.1, 40782	5	12
37849, 40532		

END MAP 7

MATCH LINE SEE SHEET 4

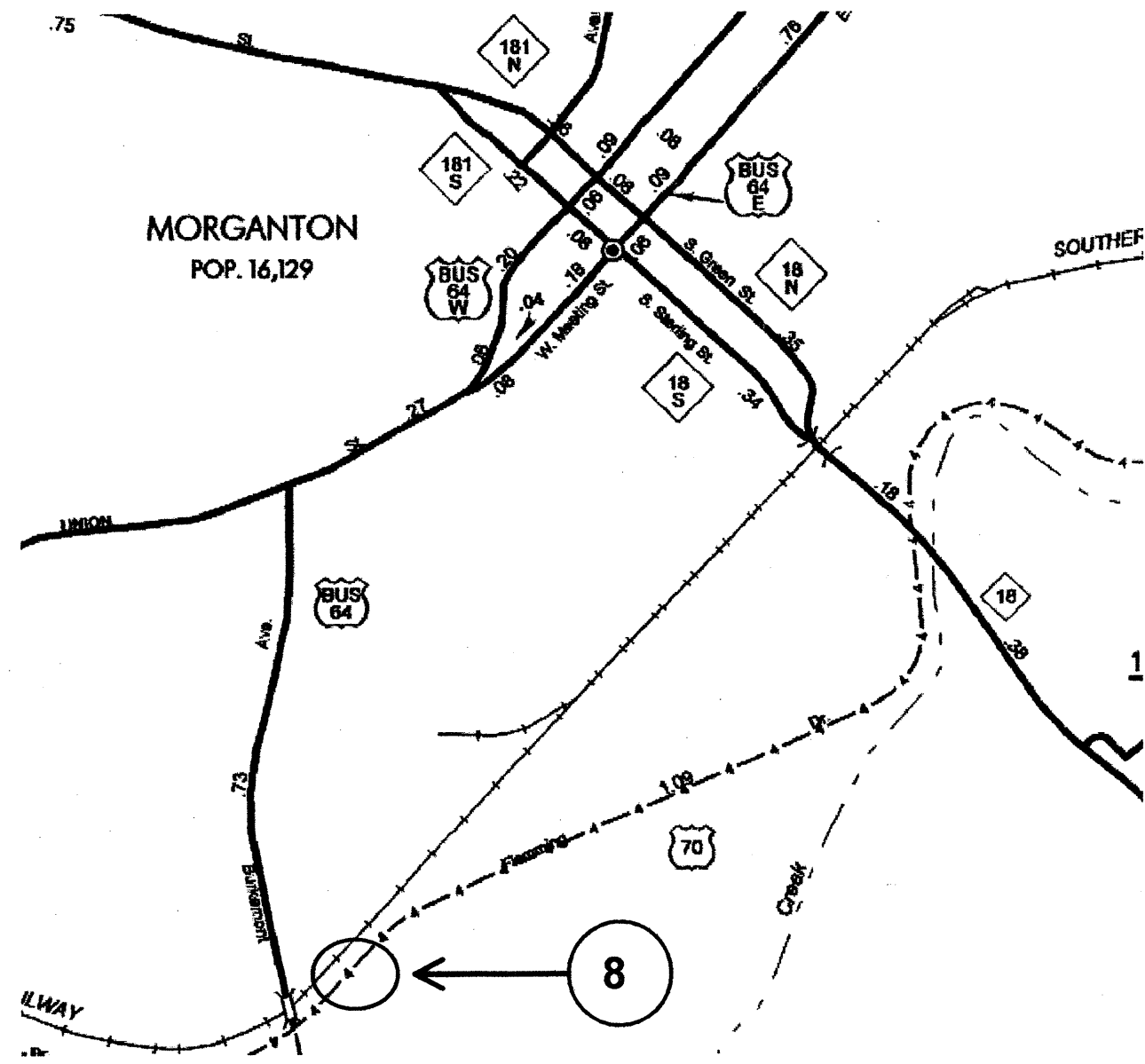


BURKE COUNTY

PROJECT NO.	SHEET NO.	TOTAL SHEETS
I-4909 (39974.3.1)	6	12
37849, 40532,		

40782

Project 39974.3.1, 40782, 37849, 40532



BURKE COUNTY

PROJECT NO.	SHEET NO.	TOTAL NO.
I-4909 (39974.3.1), 40782, 37849, 40532	7	12

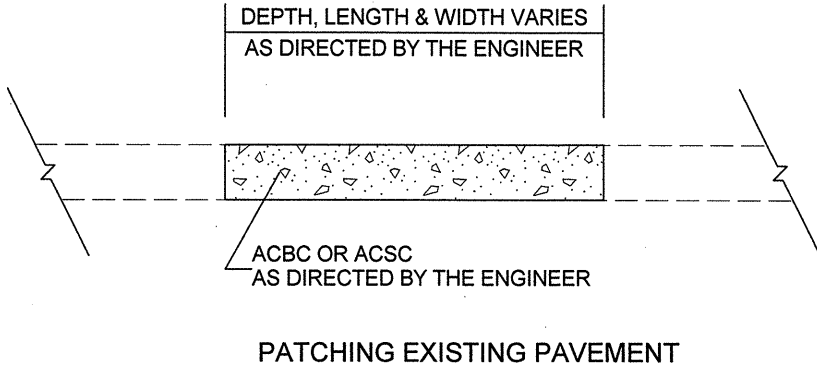
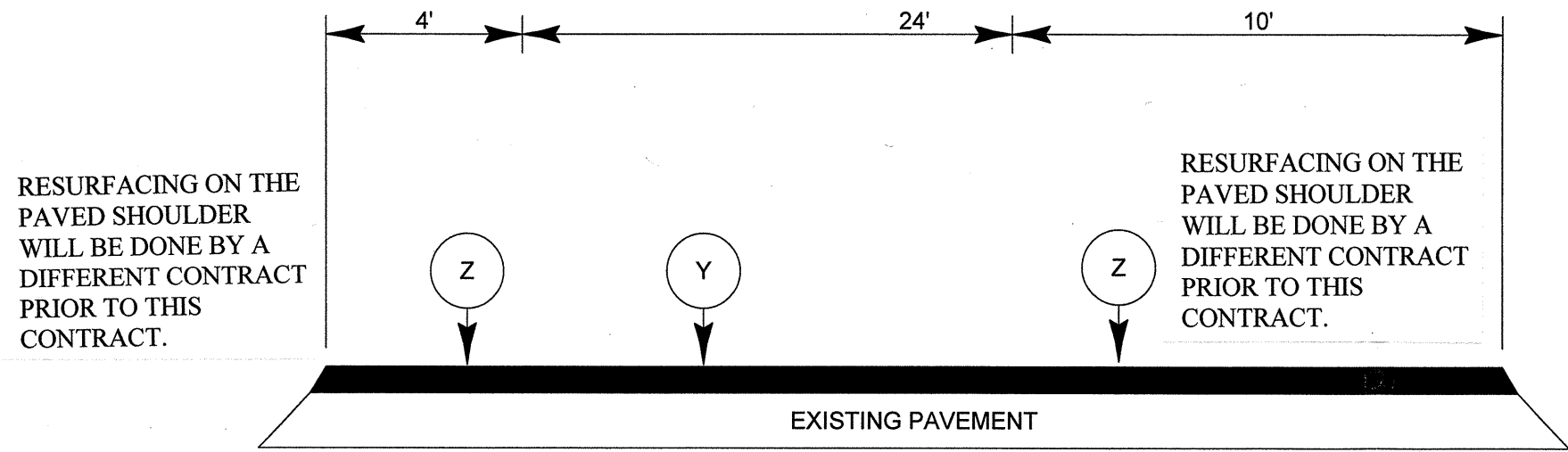
SUMMARY OF QUANTITIES

PROJECT NO	COUNTY	MAP NO	ROUTE	DESCRIPTION	TYP NO	LENGTH MI	WIDTH FT	SHOULDER RECONSTRUCTION SMI	2" MILLING SY	INTERMEDIATE COURSE, I19.0B TONS	SURFACE COURSE, S9.5C TONS	SURFACE COURSE, SF9.5A TON	PG 64-22 PLANT MIX TONS	PG 70-22 PLANT MIX TONS	PATCHING EXISTING PAVEMENT TONS	ULTRATHIN HOT MIX ASPHALT, TYPE B TON	APPLICATION OF ULTRATHIN HOT MIX ASPHALT SY	MILLED RUMBLE STRIPS LF	PG 70-28 PLANT MIX TON	MILLING JOINTS EA	MANHOLES EA	METER OR VALVE BOX EA
39974.3.1	Buncombe	1	I-40 EASTBOUND	US 25 TO END OF CONCRETE	1	4.8	25									2,593	70,402	50,688	142			
		2	I-40 WESTBOUND	BEGIN CONCRETE TO US 25	1	4.8	25									2,593	70,402	50,688	142			
TOTAL FOR PROJ NO. 39974.3.1						9.6										5,186	140,804	101,376	284			
40782	Buncombe	3	US 19-23 NORTHBOUND	I-240 TO END OF CONCRETE	1	3.8	25									2,150	55,735	40,128	118			
		4	US 19-23 SOUTHBOUND	START OF CONCRETE TO I-240	1	3.8	25									2,150	55,735	40,128	118			
		5	US 19-23 WESTBOUND	PATTON AVE FROM START OF BRIDGE OVER I-240 RAMP TO END OF CONCRETE	2, 3	0.3	37									255	6,623		14			
		6	US 19-23 EASTBOUND	PATTON AVE FROM START OF CONCRETE TO END OF BRIDGE OVER I-240 RAMP	2, 3	0.3	37									261	6,779		14			
TOTAL FOR PROJ NO. 40782						8.2										4,816	124,872	80,256	264			
37849	Burke	7	US 70BUS - US 70	END C&G IN MORGANTON TO CATAWBA COUNTY	4, 5, 6	16.29	25	26.38	37,130	4,970	3,430	770	284	206	400	9,516	272,000		523	117	31	43
TOTAL FOR PROJ NO. 37849						16.29		26.38	37,130	4,970	3,430	770	284	206	400	9,516	272,000		523	117	31	43
40532	Burke	8	US 70	E. FLEMING DR. BEGINNING .10 MILE EAST OF US 64 FOR 800 FEET	3	0.16	60									217	5,334		12			
TOTAL FOR PROJ NO. 40532						0.16		0	0	0	0	0	0	0	0	217	5,334		12			
GRAND TOTAL						34.25		26.38	37,130	4,970	3,430	770	284	206	400	19,735	543,010	181,632	1,083	117	31	43

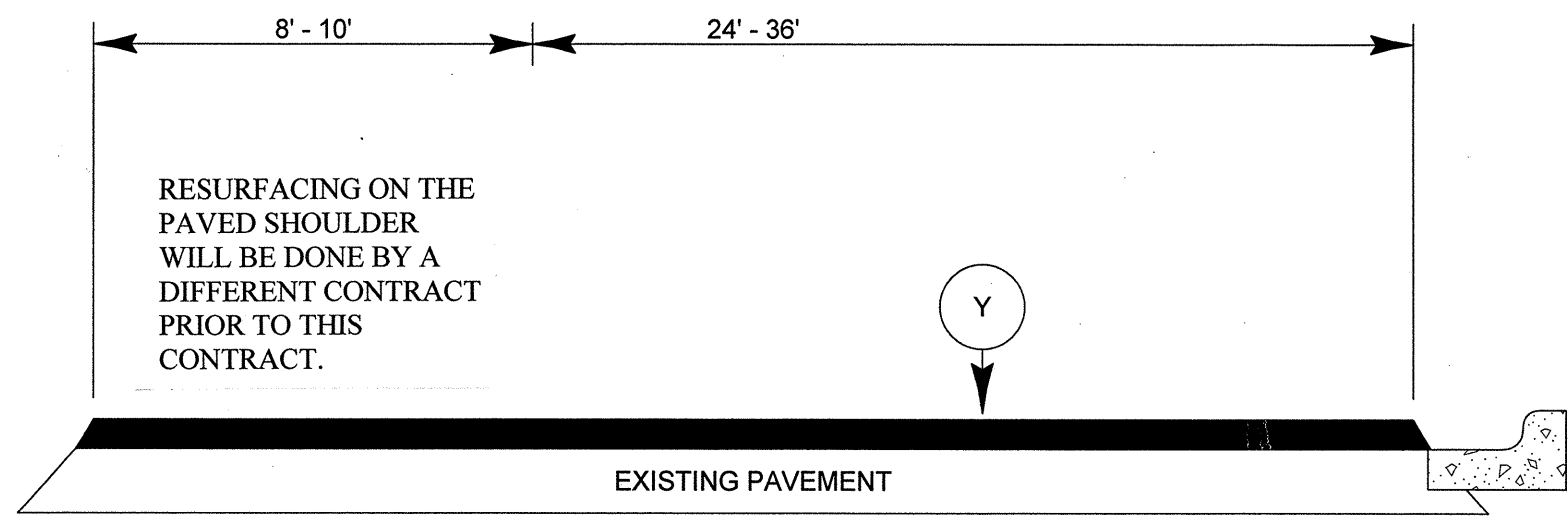
THERMOPLASTIC AND PAINT QUANTITIES

PROJECT NO	COUNTY	MAP NO	ROUTE	DESCRIPTION	4685000000-E		4686000000-E		4688000000-E	4690000000-E	4697000000-E	4700000000-E	4710000000-E	4721000000-E					4725000000-E	4810000000-E	4890000000-N	4905000000-N	4415000000-N	4480000000-N	
					4" X 90 M THERMO LF	4" X 120 M THERMO LF	4" X 120 M WHITE THERMO LF	4" X 120 M YELLOW THERMO LF	6" X 90 M THERMO LF	6" X 120 M THERMO LF	8" X 120 M THERMO LF	12" X 90 M THERMO LF	24" X 120 M WHITE THERMO LF	THERMO MSG I-26 RIGHT LANE 120 M EA	THERMO MSG I-26 NEXT EXIT 120 M EA	THERMO MSG LANE ENDS 500 FEET 120 M EA	THERMO MSG SCHOOL 120 M EA	THERMO MSG ONLY 120 M EA	THERMO LT ARROW 90 M EA	4" PAINT LF	HOT SPRAY THERMO 6" X 40 M LF	SNOW PLOWABLE MARKERS EA	FLASHING ARROW PANEL, TYPE C EA	TRUCK MOUNTED IMPACT ATTENUATOR (60 MPH) EA	
39974.3.1	Buncombe	1	I-40 EASTBOUND	US 25 TO END OF CONCRETE					50,688	6,336		1,200													
		2	I-40 WESTBOUND	BEGIN CONCRETE TO US 25					50,688	6,336		1,200													
TOTAL FOR PROJ NO. 39974.3.1									101,376	12,672		2,400													
40782	Buncombe	3	US 19-23 NORTHBOUND	I-240 TO END OF CONCRETE					40,128	5,016															
		4	US 19-23 SOUTHBOUND	START OF CONCRETE TO I-240					40,128	11,856				13	12										
		5	US 19-23 WESTBOUND	PATTON AVE FROM START OF BRIDGE OVER I-240 RAMP TO END OF CONCRETE					3,168	900			44												
		6	US 19-23 EASTBOUND	PATTON AVE FROM START OF CONCRETE TO END OF BRIDGE OVER I-240 RAMP					3,168	956			48						4						
TOTAL FOR PROJ NO. 40782									86,592	18,728		92	13	12			29	4	3				502	*	*
37849	Burke	7	US 70BUS - US 70	END C&G IN MORGANTON TO CATAWBA COUNTY	157,000	172,000						700						15		12		16			
TOTAL FOR PROJ NO. 37849					157,000	172,000						700						15		12		16			
GRAND TOTAL					157,000	172,000	422	2,112	187,968	31,400	700	2,400	820	13	12	15	12	20	96	24,000	101,376	1,502	1	1	

PROJECT NO. 39974.3.1, 40782, 37849, ETC.	SHEET NO. 8	TOTAL SHEETS 12
----------------------------------------------	----------------	--------------------



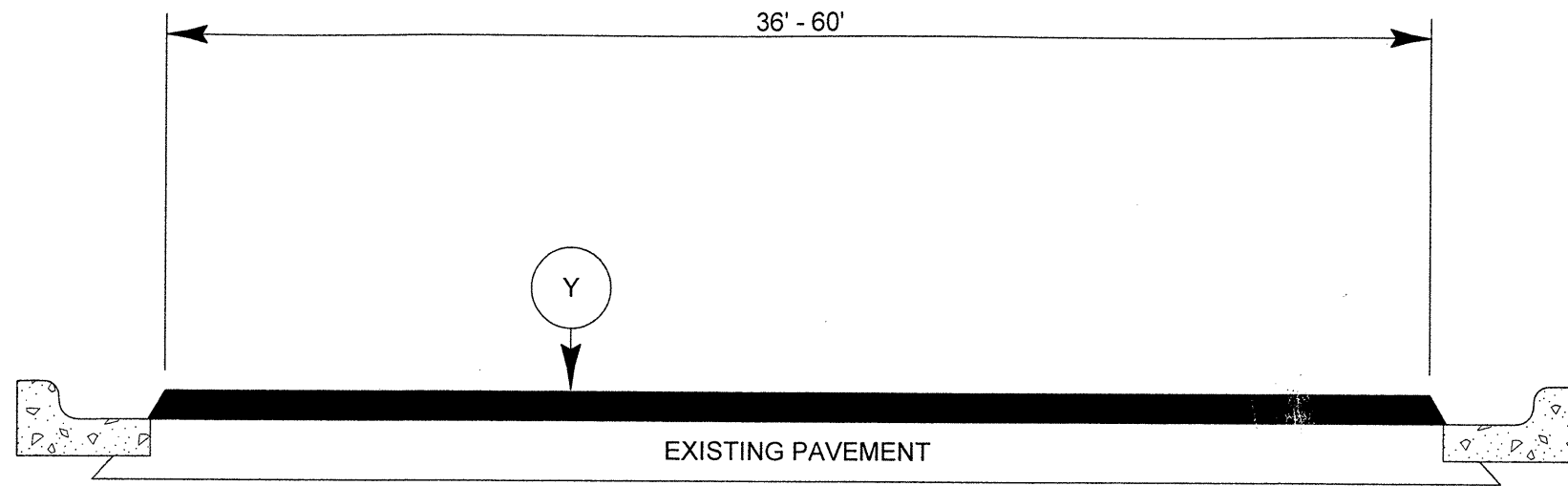
TYPICAL SECTION NO. 1



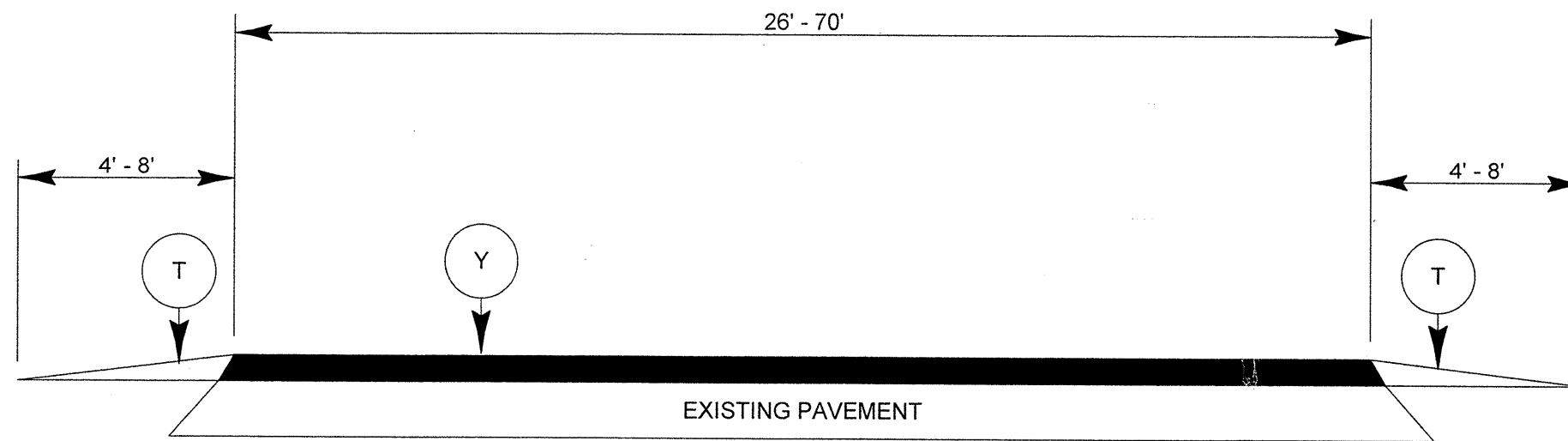
TYPICAL SECTION NO. 2

PAVEMENT SCHEDULE	
C1	PROP. APPROX. 1.5" ASPHALT CONCRETE SURFACE COURSE, TYPE S9.5C, AT AN AVERAGE RATE OF 168 LBS. PER SQ. YARD
C2	PROP. APPROX. 1-1/2" ASPHALT CONCRETE SURFACE COURSE, TYPE SF9.5A, AT CENTER OF JOINT 0'-0" TO 25'-0" AHEAD AND BACK OF JOINT
D	PROP. APPROX. 6" ASPHALT CONCRETE INTERMEDIATE COURSE, TYPE I19.0B, AT AN AVERAGE RATE OF 342 LBS. PER SQ. YARD IN EACH OF TWO LAYERS
T	EARTH MATERIAL
U	EXISTING CONCRETE WITH VARIABLE DEPTH ASPHALT OVERLAY
V	MILLING BITUMINOUS PAVEMENT AT A VARIABLE DEPTH
Y	PROP. APPROX. 5/8" ULTRATHIN HOT MIX ASPHALT, TYPE B, AT AN AVERAGE RATE OF 70 LBS. PER SQ. YARD
Z	MILLED RUMBLE STRIPS IN ACCORDANCE WITH STANDARD DRAWING 665.01

PROJECT NO.	SHEET NO.	TOTAL SHEETS
39974.3.1, 40782, 37849, ETC.	9	12



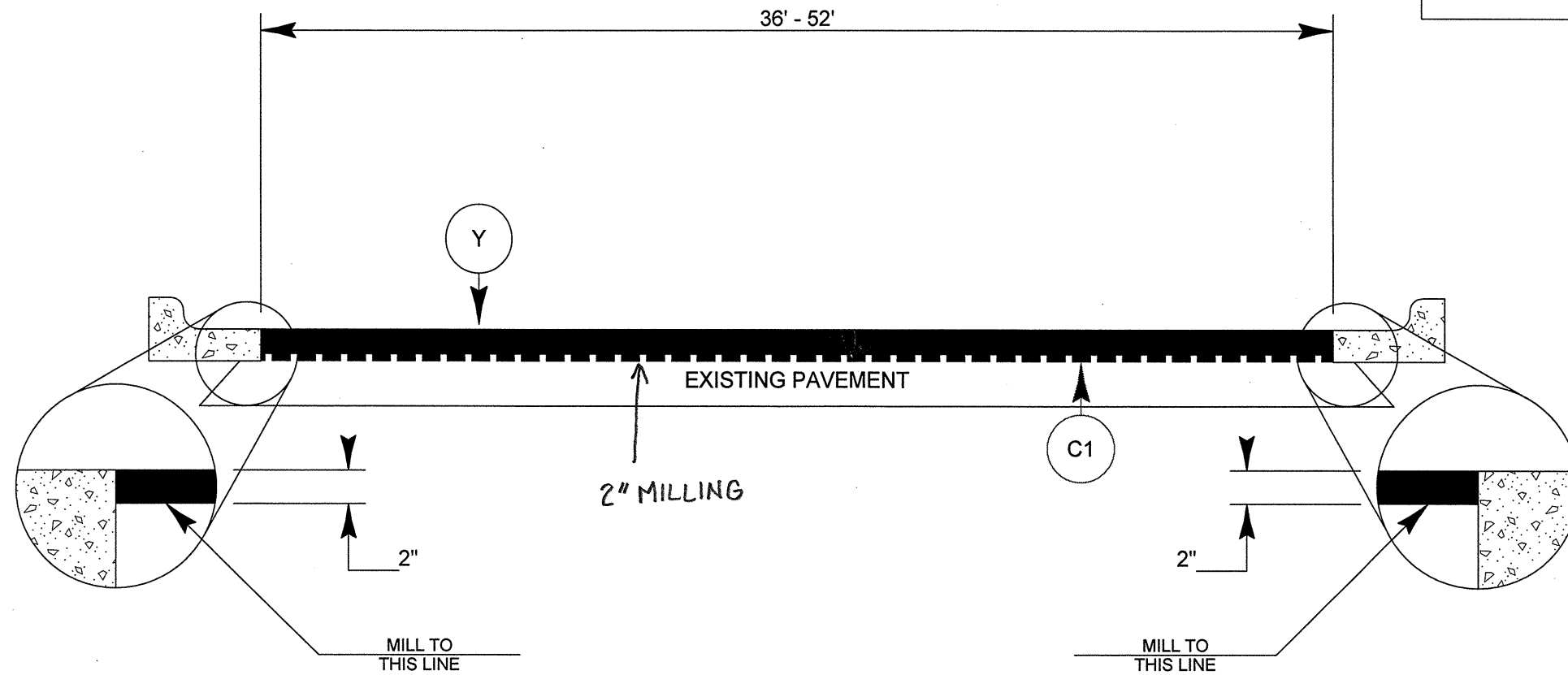
TYPICAL SECTION NO. 3



TYPICAL SECTION NO. 4

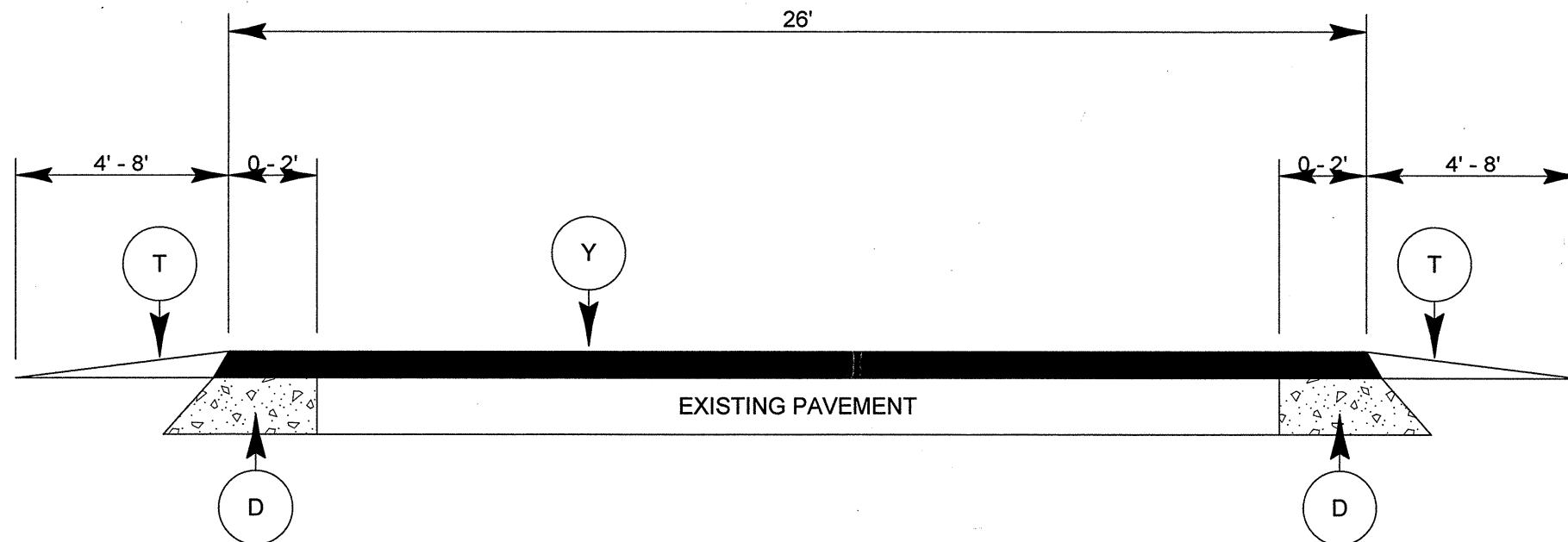
**TYPICAL SECTION NO. 4
IS TO BE USED WHERE
THE EXISTING PAVEMENT
WIDTH IS 26' OR GREATER.**

PROJECT NO. 39974.3.1, 40782, 37849, ETC.	SHEET NO. 10	TOTAL SHEETS 12
----------------------------------------------	-----------------	--------------------



TYPICAL SECTION NO. 5

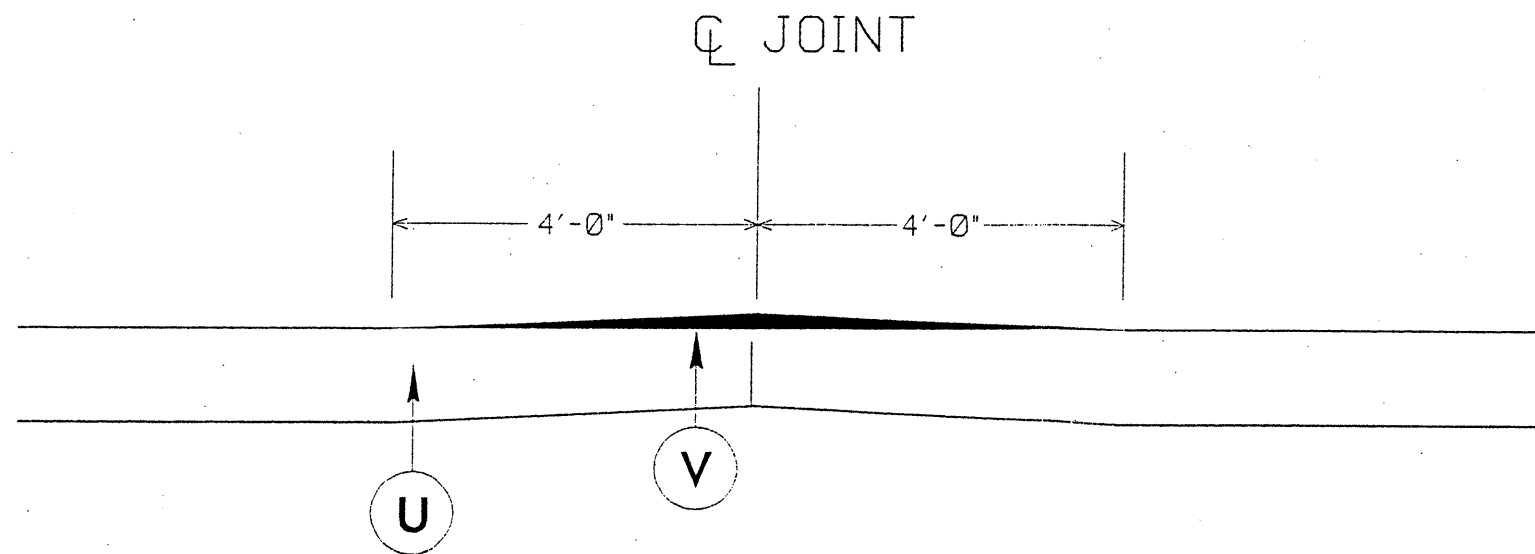
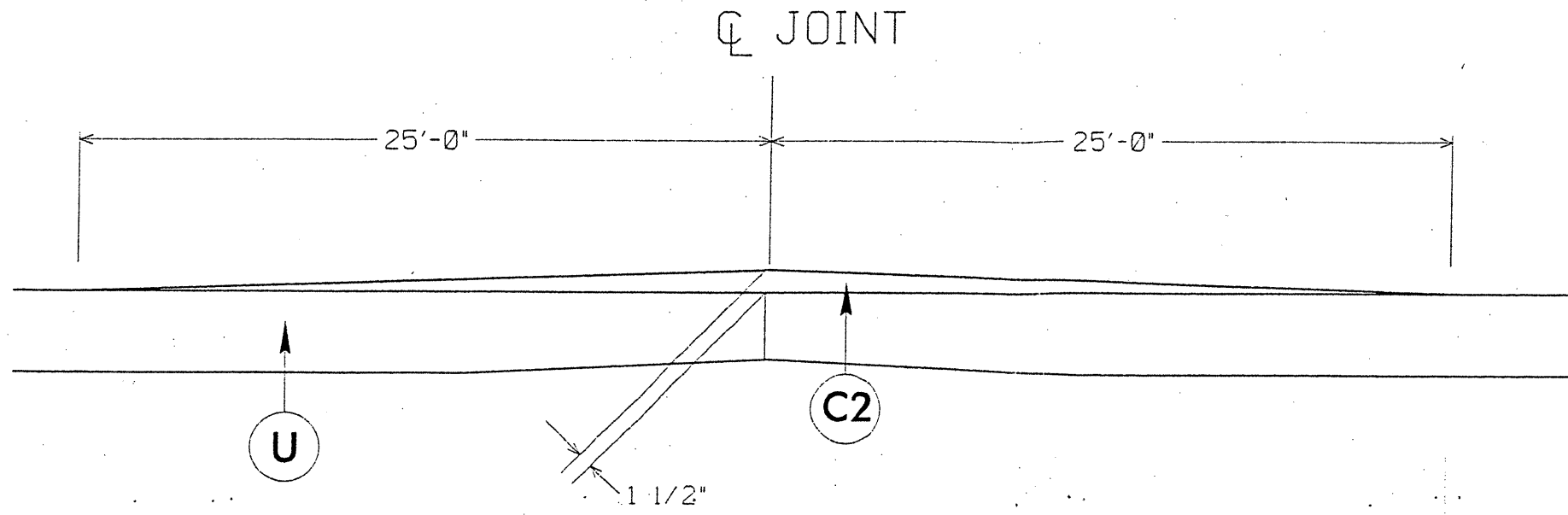
TYPICAL SECTION NO. 5 IS TO BE USED ON THE C&G SECTION WITHIN THE CITY LIMITS OF VALDESE.



TYPICAL SECTION NO. 6

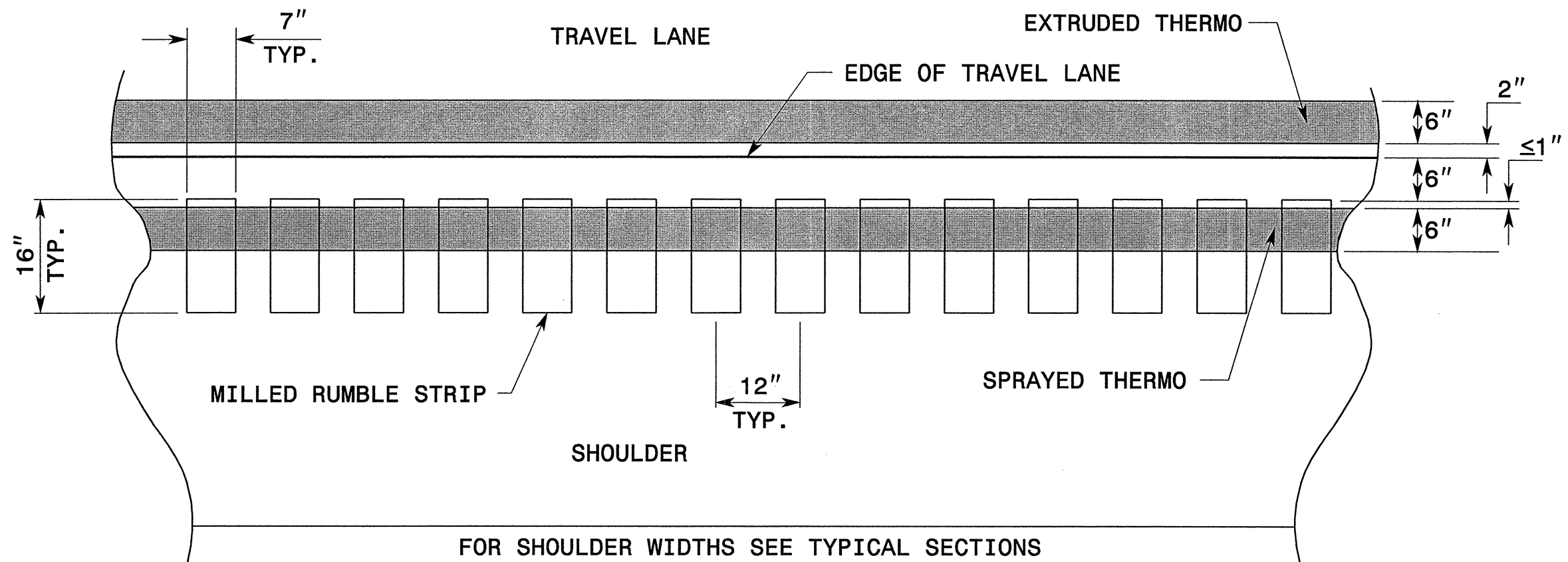
TYPICAL SECTION NO. 6 IS TO BE USED WHERE THE EXISTING PAVEMENT WIDTH IS 24' OR LESS.

PROJECT NO.	SHEET NO.	TOTAL SHEETS
39974.3.1, 40782	11	12
37849, 40532		



JOINT REPAIR DETAIL

PROJECT NO.	SHEET NO.	TOTAL SHEETS
I-4909 (39974.3.1), 37849, 40532, 40782	12	12

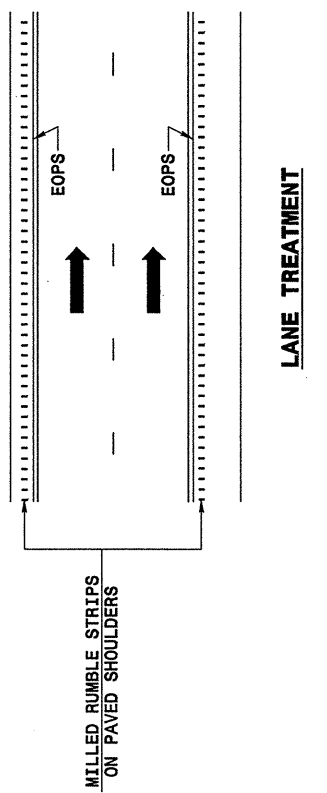
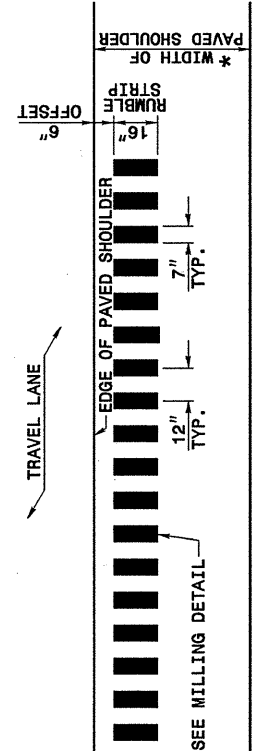
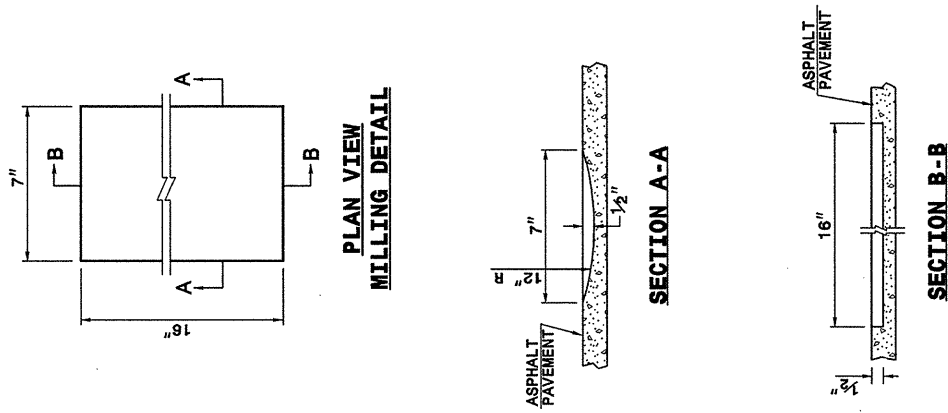


DETAIL FOR ADDITIONAL REFLECTIVE EDGE LINE

STATE OF NORTH CAROLINA
DEPT. OF TRANSPORTATION
DIVISION OF HIGHWAYS
RALEIGH, N.C.

ENGLISH DETAIL DRAWING FOR
**ASPHALT SHOULDERS
MILLED RUMBLE STRIPS**

SHEET 1 OF 2
665D01



STATE OF NORTH CAROLINA
DEPT. OF TRANSPORTATION
DIVISION OF HIGHWAYS
RALEIGH, N.C.

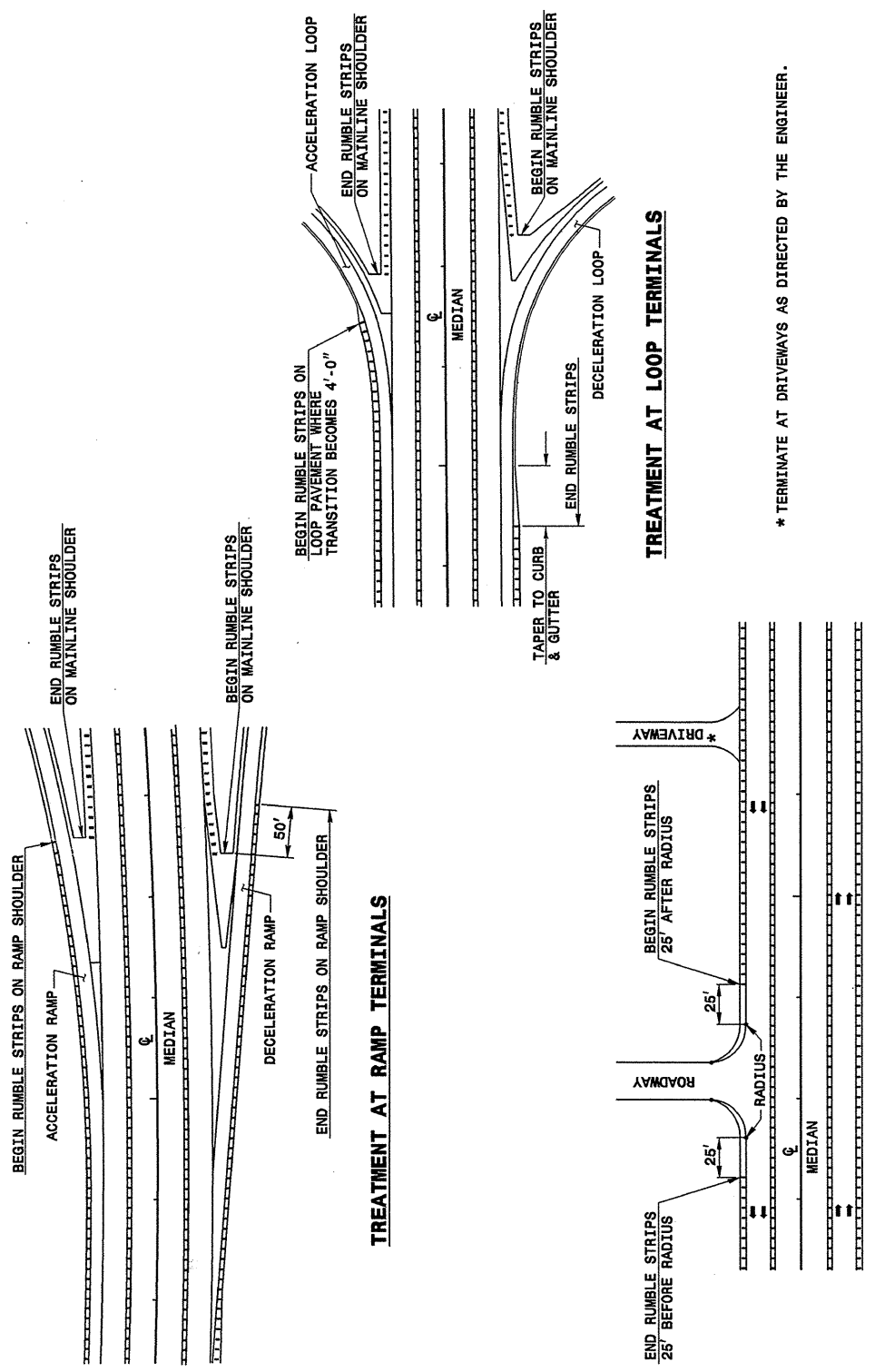
ENGLISH DETAIL DRAWING FOR
**ASPHALT SHOULDERS
MILLED RUMBLE STRIPS**

SHEET 1 OF 2
665D01

STATE OF NORTH CAROLINA
DEPT. OF TRANSPORTATION
DIVISION OF HIGHWAYS
RALEIGH, N.C.

ENGLISH DETAIL DRAWING FOR
**ASPHALT SHOULDERS
MILLED RUMBLE STRIPS**

SHEET 2 OF 2
665D01



TREATMENT AT LOOP TERMINALS

* TERMINATE AT DRIVEWAYS AS DIRECTED BY THE ENGINEER.

STATE OF NORTH CAROLINA
DEPT. OF TRANSPORTATION
DIVISION OF HIGHWAYS
RALEIGH, N.C.

ENGLISH DETAIL DRAWING FOR
**ASPHALT SHOULDERS
MILLED RUMBLE STRIPS**

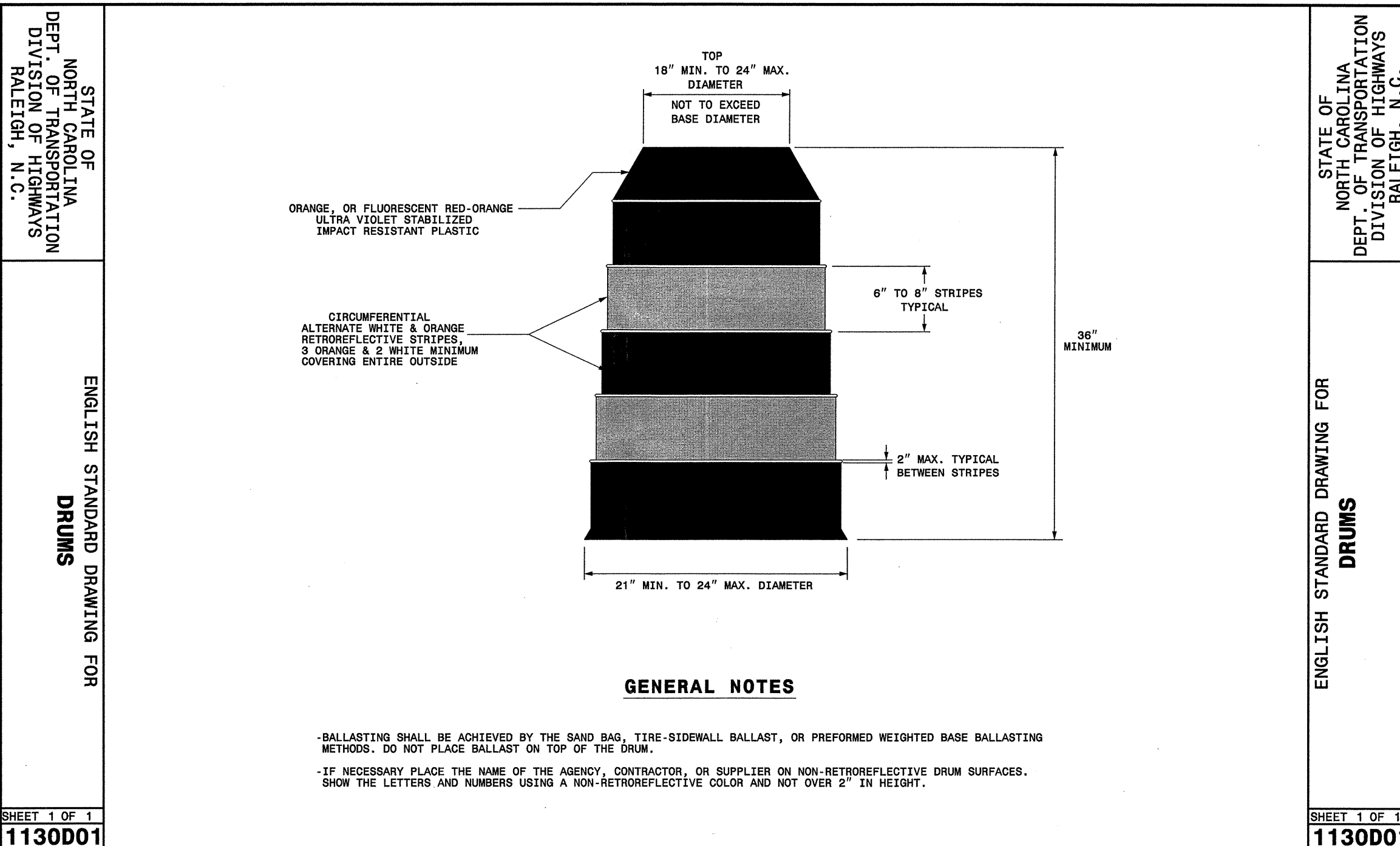
SHEET 2 OF 2
665D01

28-OCT-2004 10:41 AM \\spc\Special Details\ward\stds\02\stds to Special Details\english\665D01\665D01.dgn
Printed At: 08/12/06

**PROJECT SERVICES UNIT
STANDARDS AND SPECIAL DESIGN**
Office 919-250-4128 FAX 919-250-4119

SEE PLATE FOR TITLE

ORIGINAL BY: 2002 STANDARDS DATE: 01-15-02
MODIFIED BY: E.E. WARD DATE: 09-16-04
CHECKED BY: DATE:
FILE SPEC.: stds/02stdstodetails/english/665D01.dgn



30-MAR-2006 11:30
U:\00\DESR001\01\2100\DESIGNGROUP4\resurfacing\div13\37849\tobuncburke1-4909\37849\tcptcpdrums.dgn
DESIGNER: AL WZTC06-427

APPROVED: _____	DATE: _____	REPLACEMENT DETAIL FOR RSD 1130.01	
SEAL 	SCALE: NONE		REVISIONS
	DATE: 4/02		11/02
	DWG. BY: MMM		
	DESIGN BY: MMM		
REVIEWED BY: MMM			

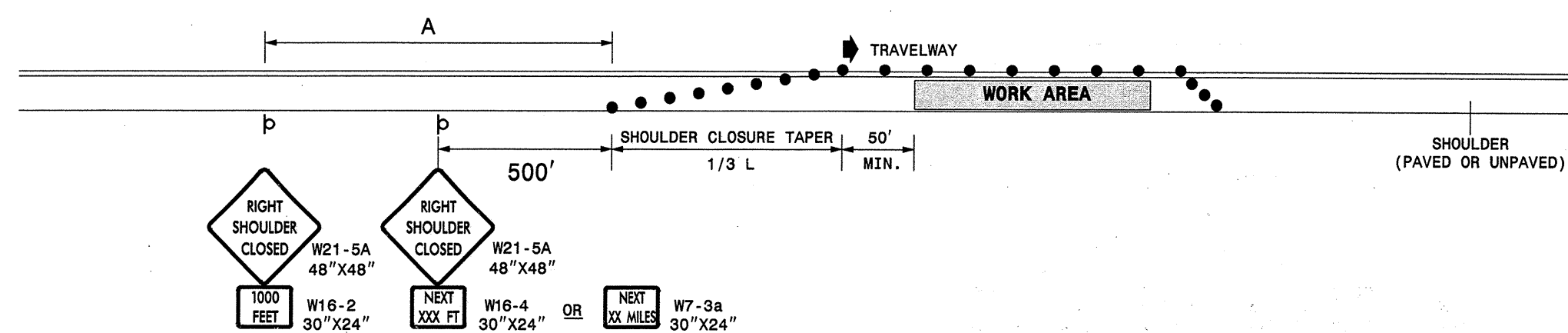
STATE OF NORTH CAROLINA
DEPT. OF TRANSPORTATION
DIVISION OF HIGHWAYS
RALEIGH, N.C.

1-05

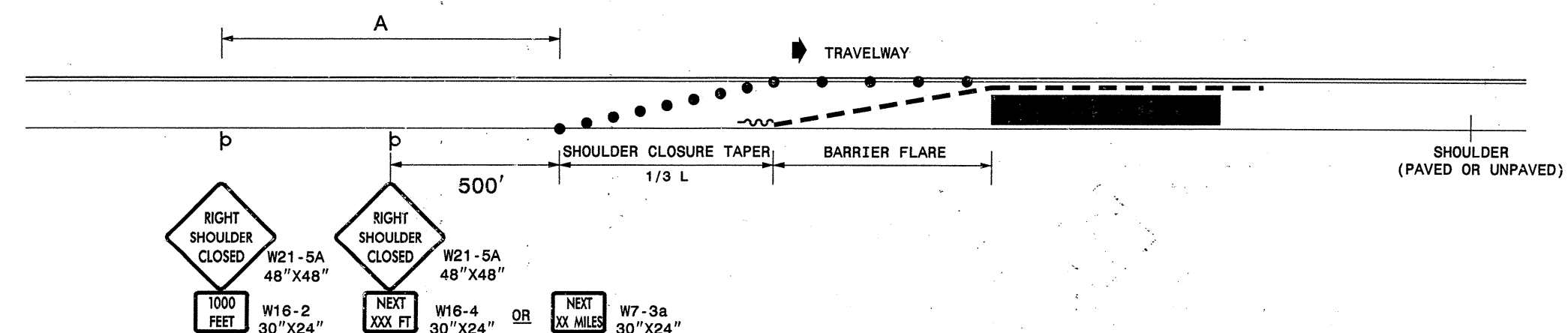
ENGLISH STANDARD DRAWING FOR
TEMPORARY SHOULDER CLOSURES

SHEET 1 OF 1
1101D04

SHOULDER CLOSURES UTILIZING DRUMS



SHOULDER CLOSURES UTILIZING TEMPORARY BARRIER



GENERAL NOTES

- PLACE SHOULDER CLOSURE SIGNS ON THE SAME SIDE AS THE SHOULDER THAT IS CLOSED.
- PLACE DRUMS IN THE SHOULDER TAPER AT THE MAXIMUM SPACING EQUAL IN FEET TO THE POSTED SPEED LIMIT. THE MAXIMUM SPACING OF DRUMS ALONG THE WORK AREA AND BARRIER FLARE IS EQUAL IN FEET TO 2 TIMES THE POSTED SPEED LIMIT.
- FLARE THE APPROACH END OF PORTABLE CONCRETE BARRIER BEYOND THE SHOULDER AND USE A CRASH CUSHION FOR PROTECTION IF THE EXPOSED END OF THE BARRIER IS WITHIN THE "CLEAR ZONE".
- USE STATIONARY SIGNS FOR LONG TERM OPERATIONS (LONGER THAN 3 DAYS).
- REFER TO STD. 1101.11 SHEETS 1, 3, & 4, FOR "L" DISTANCE, BARRIER FLARE RATES, AND SIGN SPACING.

LEGEND

- ~ TEMPORARY CRASH CUSHION
- - - PORTABLE CONCRETE BARRIER
- DRUM
- Ⓟ STATIONARY OR PORTABLE SIGN
- ➔ DIRECTION OF TRAFFIC FLOW

STATE OF NORTH CAROLINA
DEPT. OF TRANSPORTATION
DIVISION OF HIGHWAYS
RALEIGH, N.C.

1-05

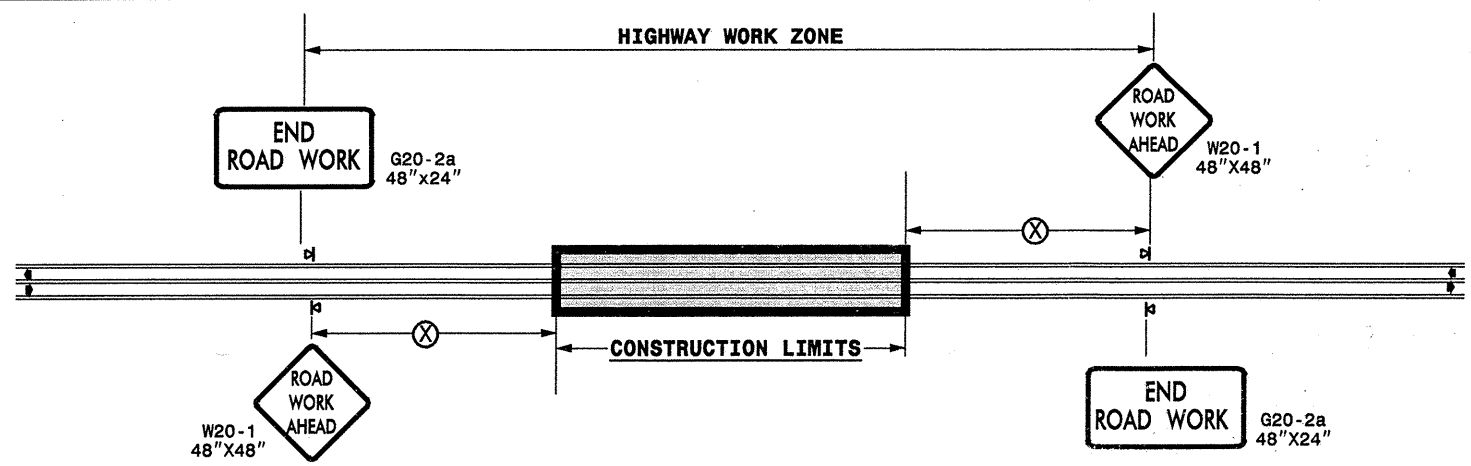
ENGLISH STANDARD DRAWING FOR
TEMPORARY SHOULDER CLOSURES

SHEET 1 OF 1
1101D04

30-MAR-2006 17:33 \\DOT\DFSR0010\GROUPS-WZTCC\design\oup4\squad40\resur\facimg\div13\37849etcbuncbur\kell\4909\37849etctop2shoulderclosures05.dgn pseyvmore AT WZTC206427

APPROVED: _____	DATE: _____	REPLACEMENT DETAIL FOR RSD 1101.04	
		DATE: 11/04	08/05
DESIGN BY: PS	REVIEWED BY: MMM		

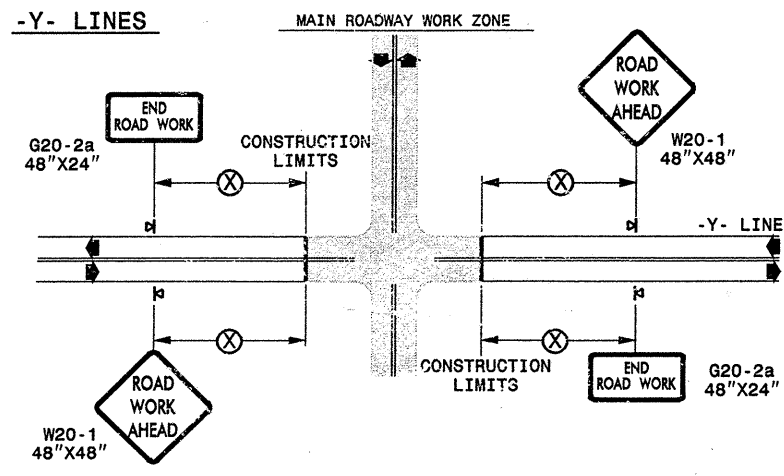
TWO-WAY UNDIVIDED ** (L-LINES)



POSTED SPEED LIMIT (M.P.H.)	RECOMMENDED MINIMUM SIGN SPACING
≤ 50	500'
≥ 55	1000'

STATE OF NORTH CAROLINA
DEPT. OF TRANSPORTATION
DIVISION OF HIGHWAYS
RALEIGH, N.C.

ROADWAYS INTERSECTING ALONG 2 WAY UNDIVIDED WORK ZONE (Y-LINES)



GENERAL NOTES

- USE FLUORESCENT ORANGE SHEETING (TYPE VII OR HIGHER) ON ALL ADVANCED WORK ZONE SIGNS.
- DO NOT INSTALL ADVANCE WARNING SIGNS MORE THAN 3 DAYS PRIOR TO BEGINNING OF WORK.
- ALL SIGN SPACING DIMENSIONS ARE APPROXIMATE, FIELD ADJUST AS NECESSARY OR AS DIRECTED.
- USE PORTABLE WORK ZONE SIGNS ONLY WITH PORTABLE WORK ZONE SIGN STANDS SPECIFICALLY DESIGNED FOR ONE ANOTHER. PORTABLE WORK ZONE SIGNS MAY BE ROLL UP OR APPROVED COMPOSITE.
- PROVIDE PORTABLE WORK ZONE SIGN STANDS, PORTABLE SIGNS AND SIGN SHEETING WHICH ARE LISTED ON THE NORTH CAROLINA DEPARTMENT OF TRANSPORTATION'S APPROVED PRODUCT LIST OR ACCEPTED AS TRAFFIC QUALIFIED BY THE TRAFFIC CONTROL UNIT.
- ** TWO-WAY UNDIVIDED ADVANCE WARNING SIGN CONFIGURATION MAY BE USED ON URBAN MULTI-LANE FACILITIES WHERE CONDITIONS LIMIT THE USE OF DUAL MOUNTED SIGNS AS DETERMINED BY THE ENGINEER.

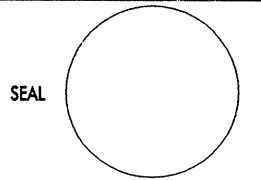
LEGEND

▢ PORTABLE SIGN

← DIRECTION OF TRAFFIC FLOW

DETAIL DRAWING
FOR TWO-WAY UNDIVIDED
WORK ZONE WARNING SIGNS

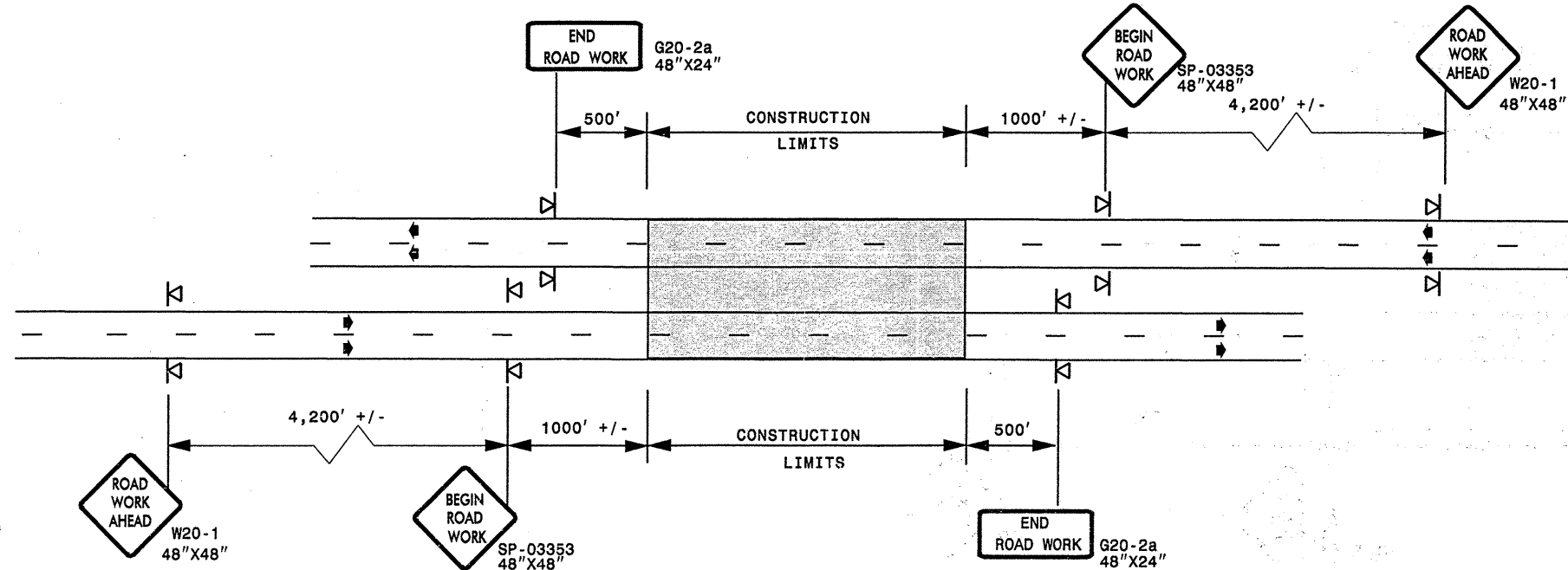
SHEET 1 OF 1

APPROVED: _____ DATE: _____	DETAIL DRAWING FOR TWO-WAY UNDIVIDED ADVANCED WORK ZONE WARNING SIGNS
SEAL 	
SCALE: NONE	REVISIONS
DATE: _____	7-98 10/01
DWG. BY: _____	10-98 03/04
DESIGN BY: _____	01/01 11/04
REVIEWED BY: _____	CHD FILE

30-MAR-2006 17:34
 \\DD1\DFSRO\GROUPS-WZ\TCCC\design\group4\squad4a\resur-facing\div13\37849etcbuncbur\kell4909\37849etcbuncbur\wysrev05.dgn
 pseyvmore AT WZT206427

ADVANCED WORK ZONE WARNING SIGNING FOR FREEWAYS (4 LANES OR GREATER)

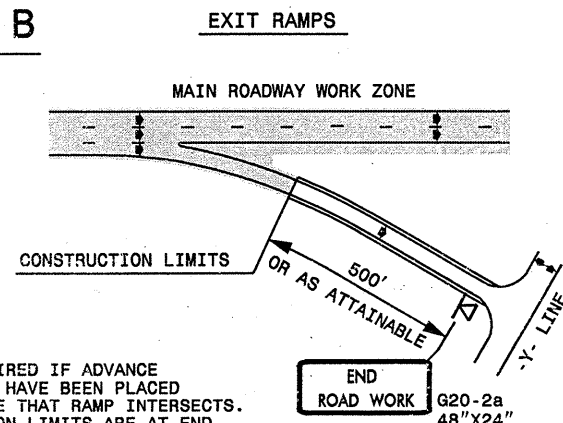
DETAIL A



STATE OF NORTH CAROLINA
DEPT. OF TRANSPORTATION
DIVISION OF HIGHWAYS
RALEIGH, N.C.

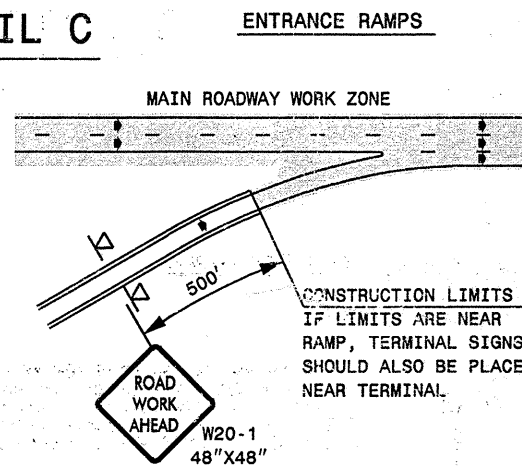
ROADWAYS INTERSECTING ALONG FREEWAY WORK ZONE (Y-LINES)

DETAIL B



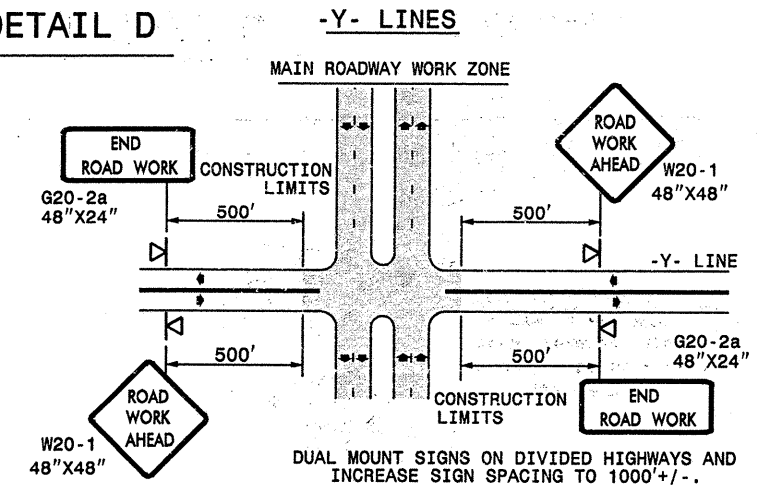
NOTE:
SIGN NOT REQUIRED IF ADVANCE WARNING SIGNS HAVE BEEN PLACED ALONG -Y- LINE THAT RAMP INTERSECTS. IF CONSTRUCTION LIMITS ARE AT END OF RAMP, PLACE SIGN AT END OF RAMP.

DETAIL C



CONSTRUCTION LIMITS IF LIMITS ARE NEAR RAMP, TERMINAL SIGNS SHOULD ALSO BE PLACED NEAR TERMINAL.

DETAIL D



DUAL MOUNT SIGNS ON DIVIDED HIGHWAYS AND INCREASE SIGN SPACING TO 1000'+/-.

GENERAL NOTES

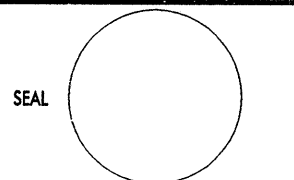

- USE FLUORESCENT ORANGE SHEETING (TYPE VII OR HIGHER) ON ALL ADVANCED WORK ZONE SIGNS.
- DO NOT INSTALL ADVANCE WARNING SIGNS MORE THAN 3 DAYS PRIOR TO BEGINNING OF WORK.
- ALL SIGN SPACING DIMENSIONS ARE APPROXIMATE, FIELD ADJUST AS NECESSARY OR AS DIRECTED.
- USE PORTABLE WORK ZONE SIGNS ONLY WITH PORTABLE WORK ZONE SIGN STANDS SPECIFICALLY DESIGNED FOR ONE ANOTHER. PORTABLE WORK ZONE SIGNS MAY BE ROLL UP OR APPROVED COMPOSITE.
- PROVIDE PORTABLE WORK ZONE SIGN STANDS, PORTABLE SIGNS AND SIGN SHEETING WHICH ARE LISTED ON THE NORTH CAROLINA DEPARTMENT OF TRANSPORTATION'S APPROVED PRODUCT LIST OR ACCEPTED AS TRAFFIC QUALIFIED BY THE TRAFFIC CONTROL UNIT.
- ** TWO-WAY UNDIVIDED ADVANCE WARNING SIGN CONFIGURATION MAY BE USED ON MULTI-LANE FACILITIES WHERE CONDITIONS LIMIT THE USE OF DUAL MOUNTED SIGNS AS DETERMINED BY THE ENGINEER.

LEGEND

- PORTABLE SIGN
- DIRECTION OF TRAFFIC FLOW

DETAIL DRAWING
FOR FREEWAYS
WORK ZONE WARNING SIGNS
(SHORT-DURATION LANE CLOSURES)

SHEET 1 OF 1

APPROVED: _____	DATE: _____	DETAIL DRAWING FOR FREEWAYS WORK ZONE WARNING SIGNS	
SEAL 			
SCALE: NONE		REVISIONS	
DATE: _____		7-98	10/01
DWG. BY: _____		10-98	03/04
DESIGN BY: _____		01/01	11/04
REVIEWED BY: _____	DATE: _____	CAD FILE	

30-MAR-2006 17:36
 \\D01VDESRO01\GROUPS-WZTCCC\design\poup4\sqoud40\resurfacing\div\3\37849etcbuncburk\4909\37849etcfreelanesgreatrev05.dgn
 pseyemore AT WZTCCC

TWO LANE, TWO WAY WORK ZONE (L-LINES)

WBS Elements: 37849, 39974.3.1 (I-4909), 40532 & 40782


PROJ. REFERENCE NO. See to the Left	SHEET NO. NCMA-1
----------------------------------------	---------------------

POSTED SPEED LIMIT (M.P.H.)	RECOMMENDED MINIMUM SIGN SPACING
P.S.L. ≤ 50	350'
P.S.L. ≥ 55	500'

*** ROAD WORK NEXT XX MILES** G20-1A 60"x24"

THIS SIGN TO BE USED ON PROJECTS LONGER THAN 2 MILES
THE NUMBER DISPLAYED ON THE SIGN IS TO BE A WHOLE NUMBER ROUNDED UP TO THE NEXT MILE
IT'S TO BE LOCATED 1,500 FEET INSIDE OF THE CONSTRUCTION LIMITS

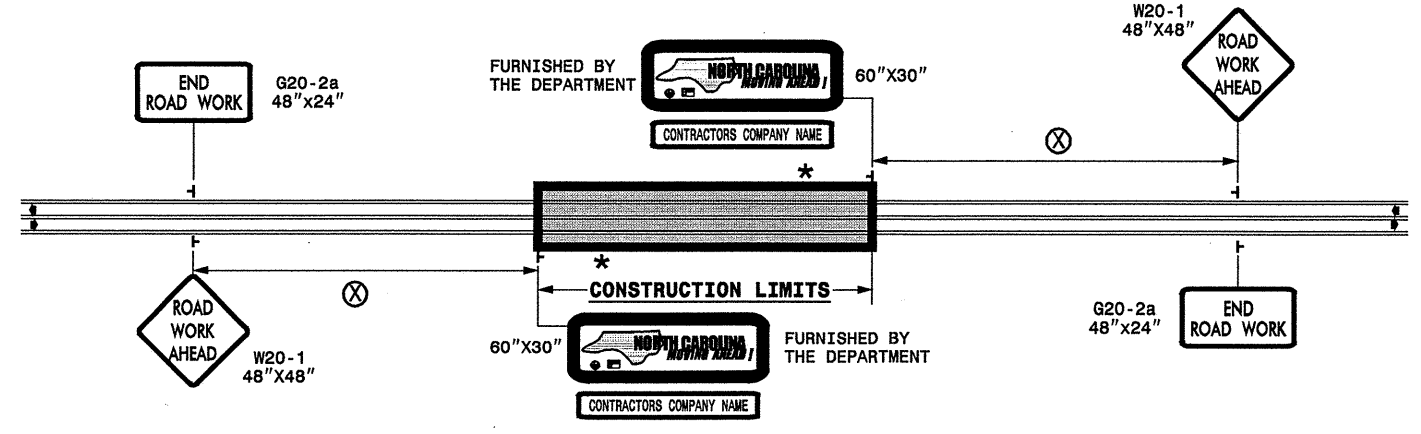
FURNISHED BY THE DEPARTMENT



60"x30"

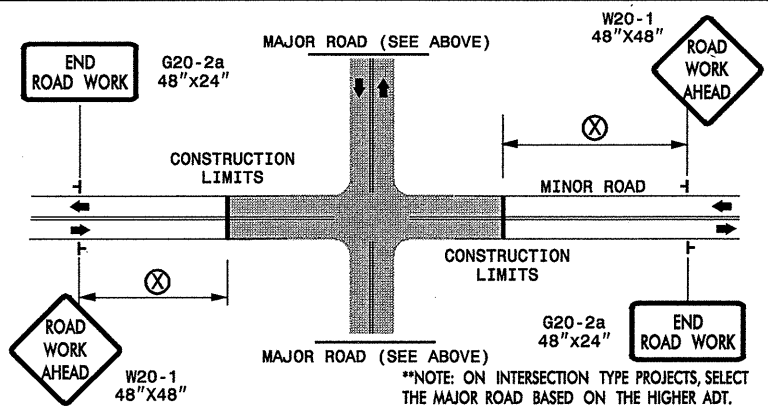
CONTRACTORS COMPANY NAME

60" Max. X 12"



STATE OF NORTH CAROLINA
DEPT. OF TRANSPORTATION
DIVISION OF HIGHWAYS
RALEIGH, N.C.

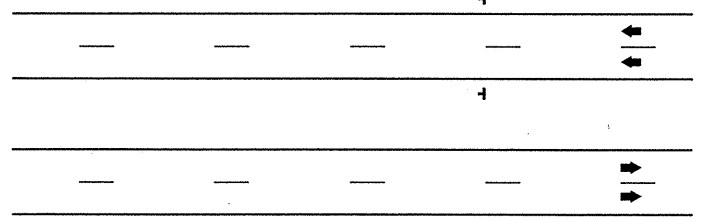
INTERSECTIONS (-Y- LINES)



FREEWAYS/INTERSTATES

DUAL MOUNT "ROAD WORK AHEAD" SIGNS 1,000' IN ADVANCE OF PROJECT LIMITS

DUAL MOUNT "MOVING AHEAD" SIGNS 500' IN ADVANCE OF PROJECT LIMITS



DETAIL DRAWING FOR ADVANCE
WARNING WORK ZONE SIGNS

GENERAL NOTES

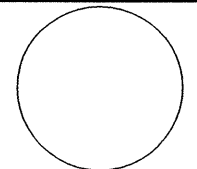

- USE FLUORESCENT ORANGE SHEETING (TYPE VII OR HIGHER) ON ALL ADVANCED WORK ZONE SIGNS.
- DO NOT INSTALL ADVANCE WARNING SIGNS MORE THAN 3 DAYS PRIOR TO BEGINNING OF WORK.
- SIGNS SHOWN ARE REQUIRED FOR WORK ZONES THAT WILL REMAIN IN EFFECT OVERNIGHT. FOR SHORT-TERM DAILY MAINTENANCE TYPE OPERATIONS, THIS SIGNING APPLICATION IS OPTIONAL; MAY USE ONLY APPLICABLE ROADWAY STANDARD DRAWINGS INSTEAD. HOWEVER, IF THIS SIGNING APPLICATION IS USED, SIGNS MAY BE PORTABLE MOUNTED. USE PORTABLE WORK ZONE SIGNS ONLY WITH PORTABLE WORK ZONE SIGN STANDS SPECIFICALLY DESIGNED FOR ONE ANOTHER. PORTABLE WORK ZONE SIGNS MAY BE ROLL UP OR APPROVED COMPOSITE.
- ALL SIGN SPACING DIMENSIONS ARE APPROXIMATE, FIELD ADJUST AS NECESSARY OR AS DIRECTED.
- USE 3LB STEEL U-CHANNEL POST OR 4" X 4" WOOD POST FOR ALL WORK ZONE SIGNS. 3LB STEEL U-CHANNEL POSTS MUST MEET THE REQUIREMENTS OF STANDARD SPECIFICATION SECTION 1094-1(B), MAY BE GALVANIZED STEEL, OR MAY BE PAINTED GREEN BY THE POST MANUFACTURER. SQUARE STEEL TUBING POSTS HAVING EQUIVALENT STRENGTH OF THE 3 LB STEEL U-CHANNEL POST ARE ALSO ACCEPTABLE FOR USE. ERECT SIGNS PER ROADWAY STANDARD DRAWING 1110.01. PAYMENT FOR WOOD POSTS, 3LB STEEL U-CHANNEL AND SQUARE STEEL TUBING POSTS WITH SIGNS WILL BE MADE ACCORDING TO STANDARD SPECIFICATION "WORK ZONE SIGNS" SECTION 1110.
- WHEN NECESSARY, USE SPLICING IN ACCORDANCE WITH ROADWAY STANDARD DRAWING NO. 1110.01. REMOVE ENTIRE POST WHEN REMOVING SIGNS WITH SPLICED POSTS.
- DO NOT BACK BRACE SIGN SUPPORTS.

LEGEND

┆ STATIONARY SIGN

◄ DIRECTION OF TRAFFIC FLOW

SHEET 1 OF 1

APPROVED: _____ DATE: _____	ADVANCE WARNING WORK ZONE SIGNS FOR "MOVING AHEAD"	
SEAL 	SCALE: NONE	REVISIONS
	DATE: 07/03	11/04
	DWG. BY: JSK	12/04
	DESIGN BY: JSK	
REVIEWED BY: SK		CAD FILE