

05/08/04

See Sheet 1-A For Index of Sheets

STATE OF NORTH CAROLINA
DIVISION OF HIGHWAYS

ROBESON COUNTY

**LOCATION: I-95 FROM MILEPOST 22.1 TO
CUMBERLAND COUNTY LINE**

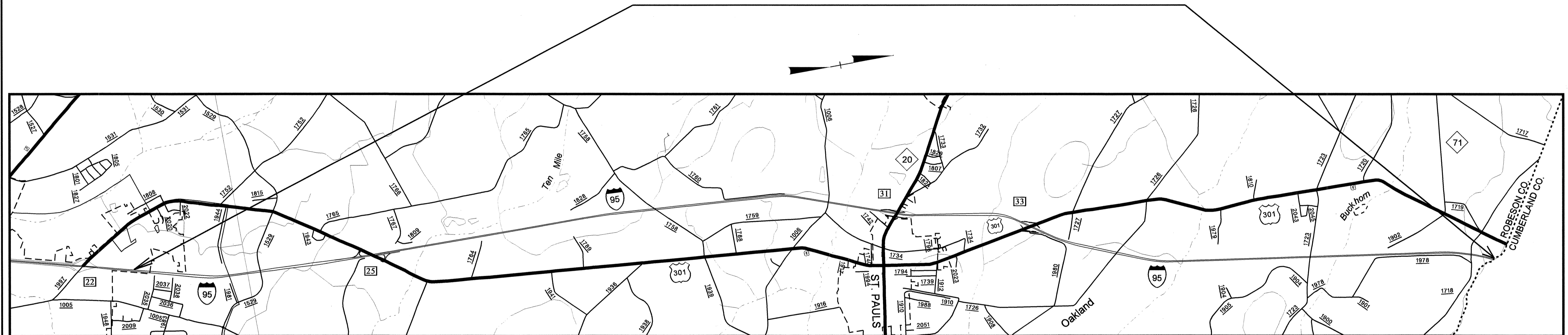
**TYPE OF WORK: MILLING, RESURFACING, DRAINAGE
AND GUARDRAIL**

STATE	STATE PROJECT REFERENCE NO.	SHEET NO.	TOTAL SHEETS
N.C.	I-4711	1	
STATE PROJ. NO.	F.A. PROJ. NO.	DESCRIPTION	
38724.1.1		PRELIMINARY	
38724.3.1	IMS-09 5-1(59)22	CONSTRUCTION	

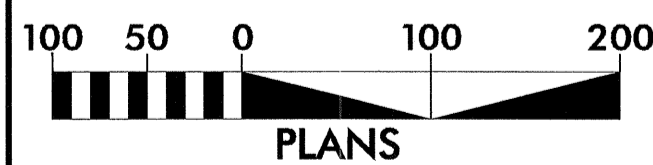
TIP PROJECT: I - 4711

CONTRACT: 38724.3.1

PROJECT LIMITS



GRAPHIC SCALES



DESIGN DATA

ADT (2003) = 43,000
DUALS = 5%
TTSTs = 18%
2.5% GROWTH

PROJECT LENGTH

LENGTH OF ROADWAY PROJECT I-4711 (38724.1.1) = 16.9 MILES

Prepared In the Office of:
DIVISION OF HIGHWAYS
1000 Birch Ridge Dr., Raleigh NC, 27610

2002 STANDARD SPECIFICATIONS

RIGHT OF WAY DATE:
NA

LETTING DATE:
2-21-06

G. W. BURNS, P.E.
PROJECT ENGINEER

D. J. UNDERWOOD
PROJECT DESIGN ENGINEER

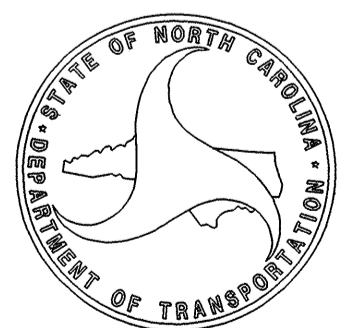
HYDRAULICS ENGINEER

SIGNATURE: _____ P.E.

ROADWAY DESIGN
ENGINEER

SIGNATURE: _____ P.E.

DIVISION OF HIGHWAYS
STATE OF NORTH CAROLINA



STATE HIGHWAY DESIGN ENGINEER P.E.