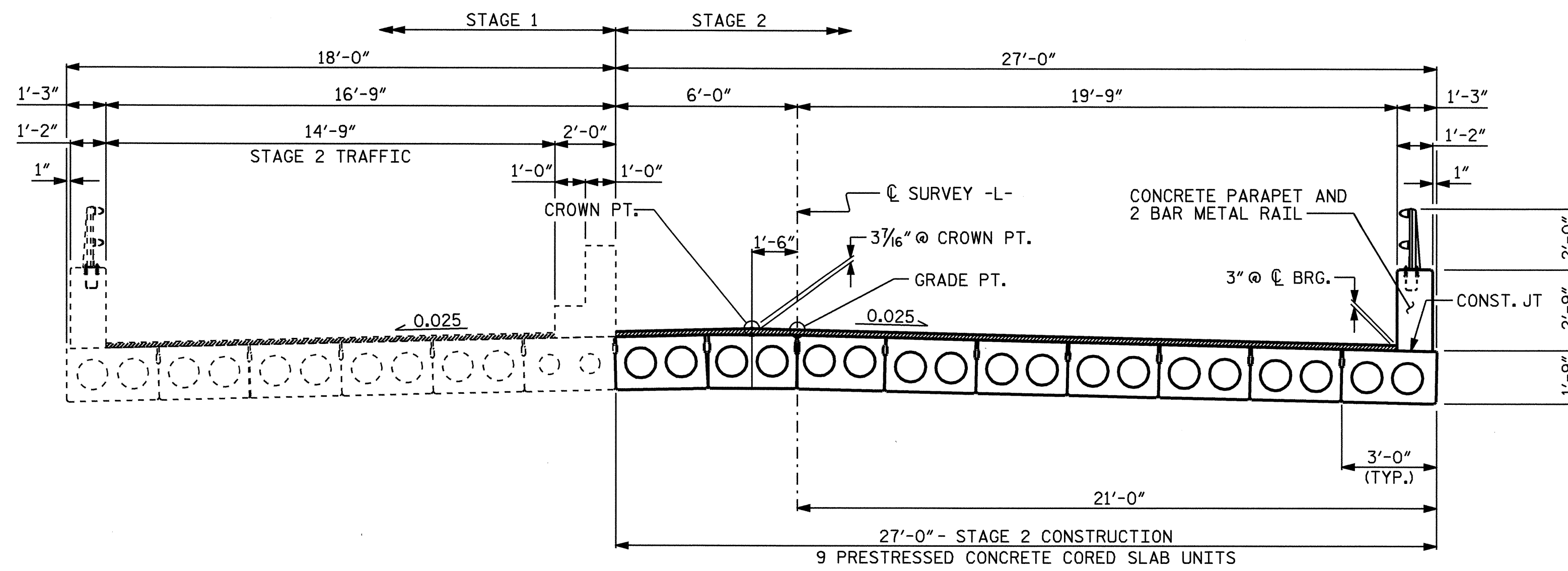
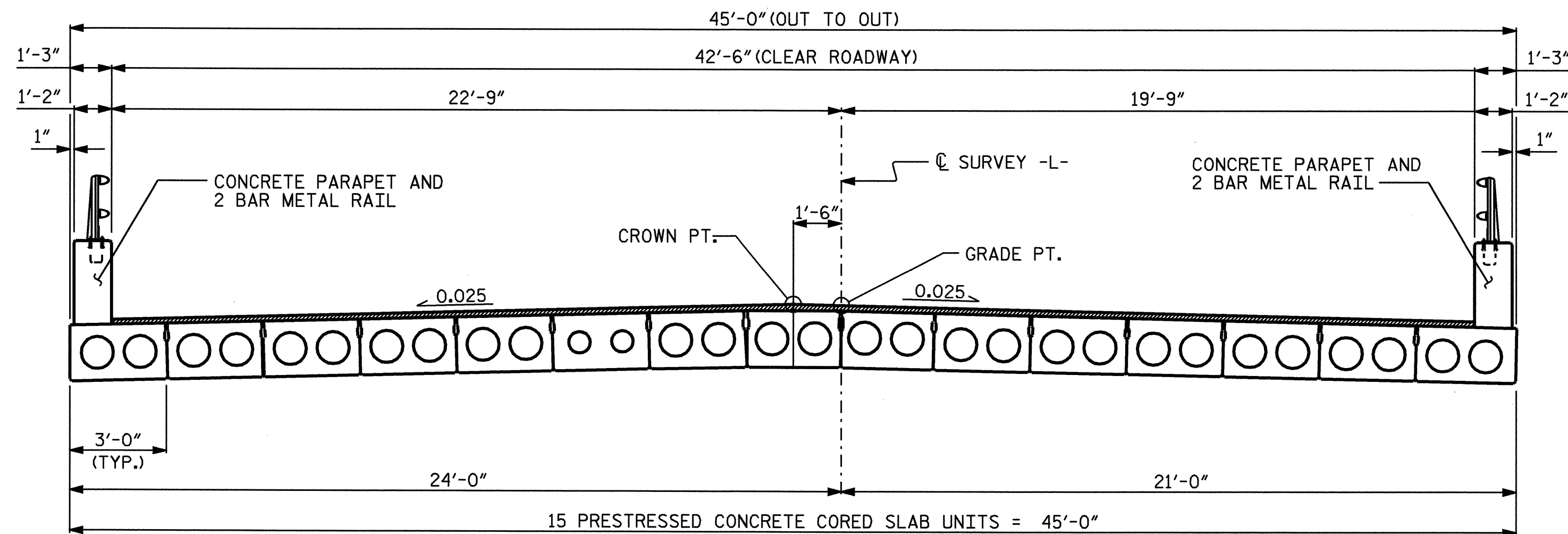


**STAGE 1 CONSTRUCTION**



**STAGE 2 CONSTRUCTION**

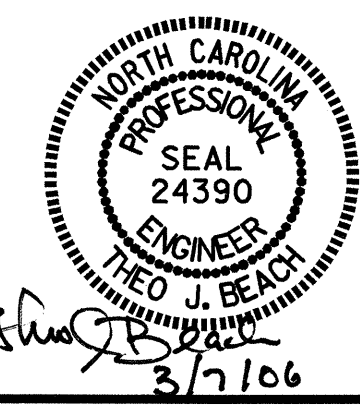


**COMPLETED CONSTRUCTION**

**NOTES:**  
 FOR MAINTENANCE OF TRAFFIC, SEE TRAFFIC CONTROL PLANS.  
 ▲ SEE TRAFFIC CONTROL PLANS FOR LOCATION AND PAY LIMITS OF THE ANCHORED PORTABLE CONCRETE BARRIER.  
 THE CONTRACTOR'S ATTENTION IS CALLED TO THE FACT THAT THE PROPOSED CUT LINE IN THE EXISTING BRIDGE MAY OCCUR IN THE SUBSTRUCTURE UNITS SUCH THAT A TEMPORARY FRAMING SYSTEM WILL BE REQUIRED TO MAINTAIN THE BENT UNIT. THE CONTRACTOR SHALL SUBMIT THIS SYSTEM TO THE ENGINEER FOR APPROVAL PRIOR TO PARTIAL REMOVAL OF EXISTING BRIDGE. ANY COST ASSOCIATED WITH THIS FRAMING SYSTEM WILL BE INCLUDED IN THE LUMP SUM PAY ITEM FOR REMOVAL OF EXISTING STRUCTURE.

PROJECT NO. B-3349  
HYDE COUNTY  
 STATION: 15+69.00 -L-

SHEET 3 OF 4  
 STATE OF NORTH CAROLINA  
 DEPARTMENT OF TRANSPORTATION  
 RALEIGH  
**GENERAL DRAWING**  
 BRIDGE OVER ROSE BAY CREEK  
 ON US 264 BETWEEN  
 SR 1139 AND SR 1304



DRAWN BY: P.C. BREWER DATE: 2/05  
 CHECKED BY: T. BEACH DATE: 2/05

REVISIONS						SHEET NO.
NO.	BY:	DATE:	NO.	BY:	DATE:	S-3
1			3			TOTAL SHEETS
2			4			44