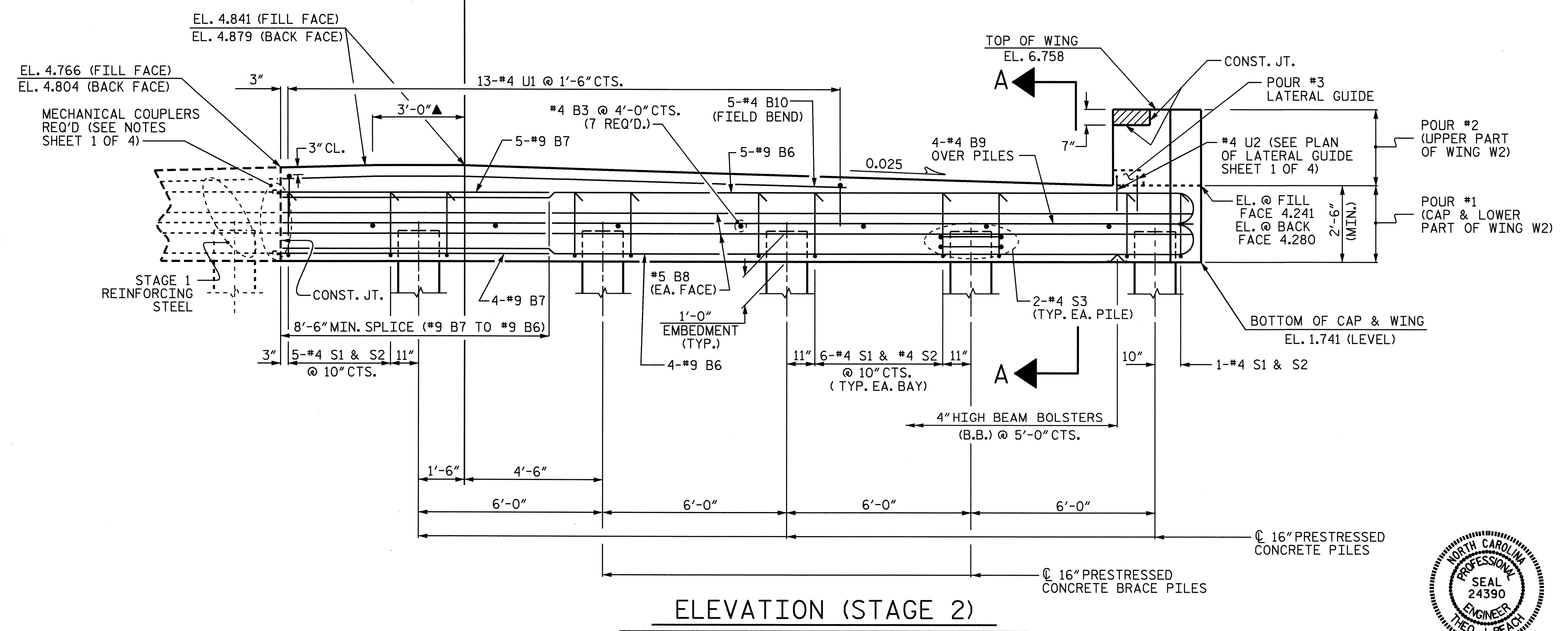
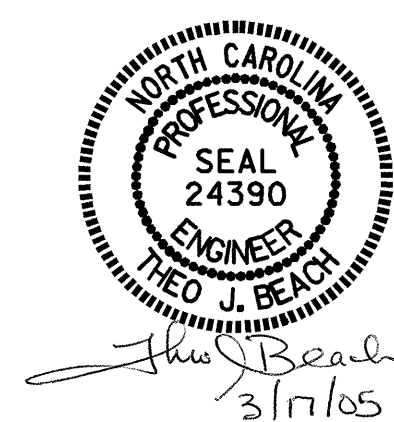


▲NOTE:  
THIS AREA IS LEVEL IN THE TRANSVERSE DIRECTION AND  
SLOPED IN THE LONGITUDINAL DIRECTION AS SHOWN.



PROJECT NO. B-3349  
HYDE COUNTY  
STATION: 15+69.00 -L-  
SHEET 2 OF 4

STATE OF NORTH CAROLINA  
DEPARTMENT OF TRANSPORTATION  
RALEIGH  
SUBSTRUCTURE  
END BENT No. 1  
(STAGE 2)



DRAWN BY : S.B. WILLIAMS DATE : 11-03  
CHECKED BY : MIKE BRITT DATE : 1-04

REVISIONS						SHEET NO.
NO.	BY:	DATE:	NO.	BY:	DATE:	S-22
1			3			TOTAL SHEETS 44
2			4			