

NOTES:

STIRRUPS AND U1 BARS IN CAP MAY BE SHIFTED AS NECESSARY TO CLEAR DOWELS.

ALL REINFORCING STEEL AND BAR SUPPORTS SHALL BE EPOXY COATED ACCORDING TO THE STANDARD SPECIFICATIONS.

CLASS AA CONCRETE SHALL BE USED IN THE END BENT CAP.

THE CONCRETE IN THE SHADED AREA OF THE WINGS SHALL BE POURED AFTER THE PARAPET AND END POST ARE CAST IF SLIP FORMING IS USED.

THE LATERAL GUIDE AT EACH END OF THE CAP IS NOT TO BE POURED UNTIL AFTER THE CORED SLAB UNITS IN THAT STAGE ARE IN PLACE.

THE CONTRACTOR SHALL PROVIDE FOR INSTALLATION OF THE 4" DIAMETER DRAIN PIPE THROUGH THE WING WALL AS REQUIRED FOR REINFORCED BRIDGE APPROACH FILLS, SEE THE ROADWAY PLANS. REINFORCING STEEL IN THE WING WALL MAY BE SHIFTED AS NECESSARY TO CLEAR THE DRAIN PIPE.

THE CONTRACTOR'S ATTENTION IS CALLED TO THE FACT THAT THE LENGTHS OF THE STAGE 1 AND STAGE 2 #9 "B" BARS REINFORCING STEEL AT THE STAGED CONSTRUCTION JOINT MAY NEED TO BE ADJUSTED DUE TO THE TYPE OF MECHANICAL BUTT SPLICE CHOSEN BY THE CONTRACTOR. NO ADDITIONAL PAYMENT WILL BE MADE FOR ANY ADJUSTMENTS REQUIRED. THE #9 B8 BARS ARE DETAILED WITH 9" OF EXTRA LENGTH.

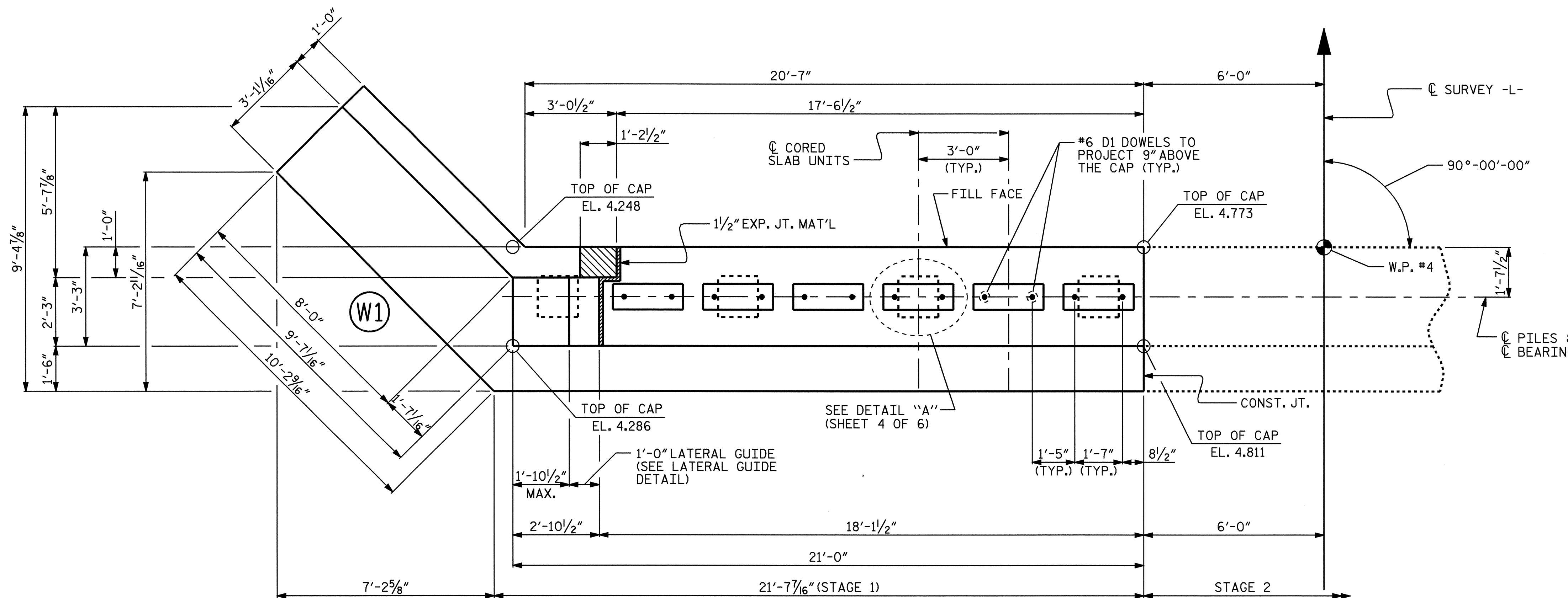
MECHANICAL COUPLERS SHALL BE USED TO JOIN THE #9 B1 IN STAGE 1 WITH THE #9 B8 IN STAGE 2. THE LOCATION OF THE COUPLERS SHALL NOT EXTEND BEYOND THE STAGE 1 CONSTRUCTION JOINT.

THE MECHANICAL COUPLERS ARE TO BE PLUGGED DURING POURING OF THE END BENT CAP AS RECOMMENDED BY THE MANUFACTURER.

FOR MECHANICAL COUPLERS, SEE MECHANICAL BUTT SPLICES FOR REINFORCING STEEL SPECIAL PROVISIONS.

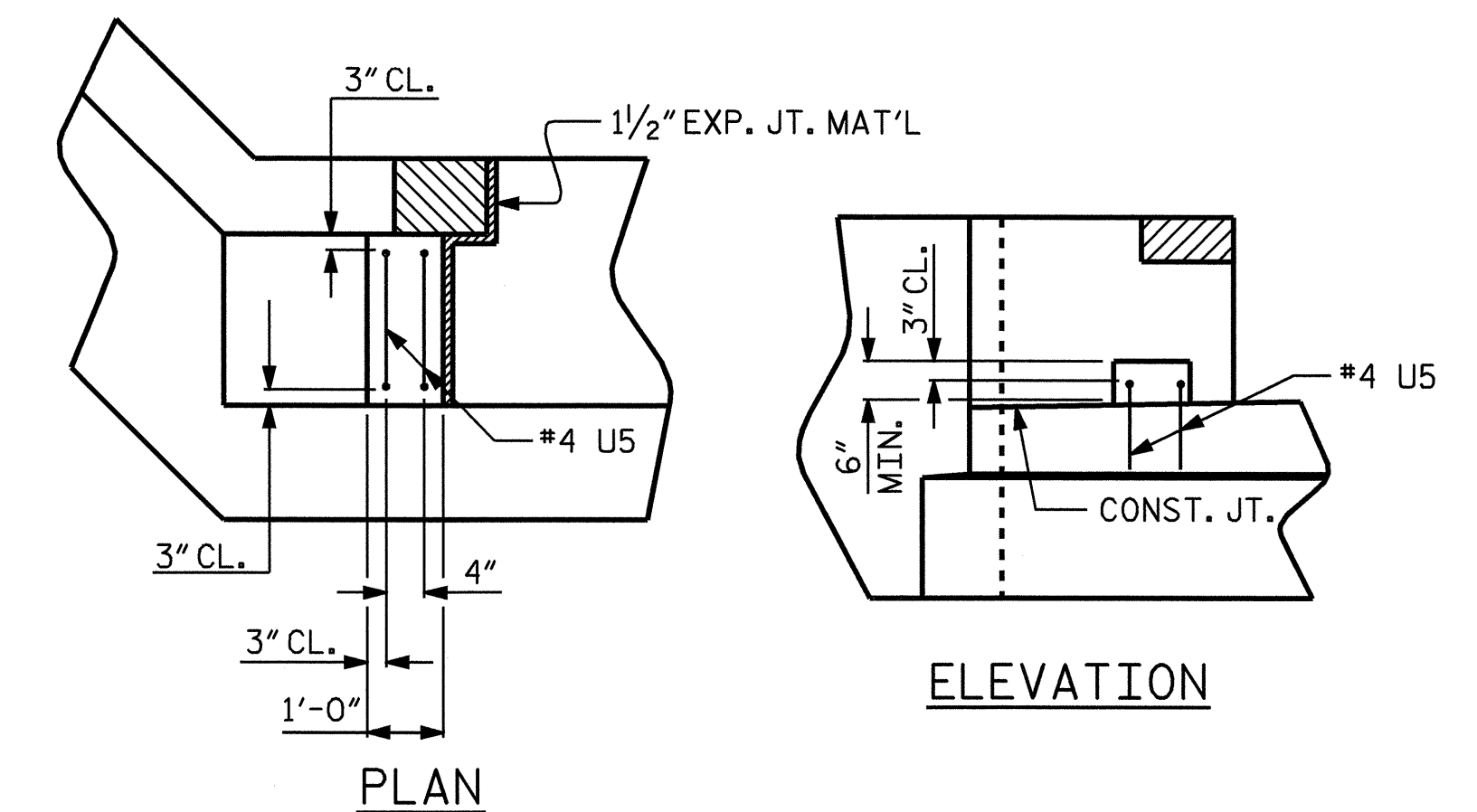
CONCRETE DISPLACED BY THE 16" PRESTRESSED CONCRETE PILES HAS BEEN DEDUCTED FROM THE CONCRETE QUANTITY.

ALL STEEL SHEET PILES SHALL BE ASTM A690 MARINE GRADE STEEL AND SHALL BE GALVANIZED IN ACCORDANCE WITH THE STANDARD SPECIFICATIONS.



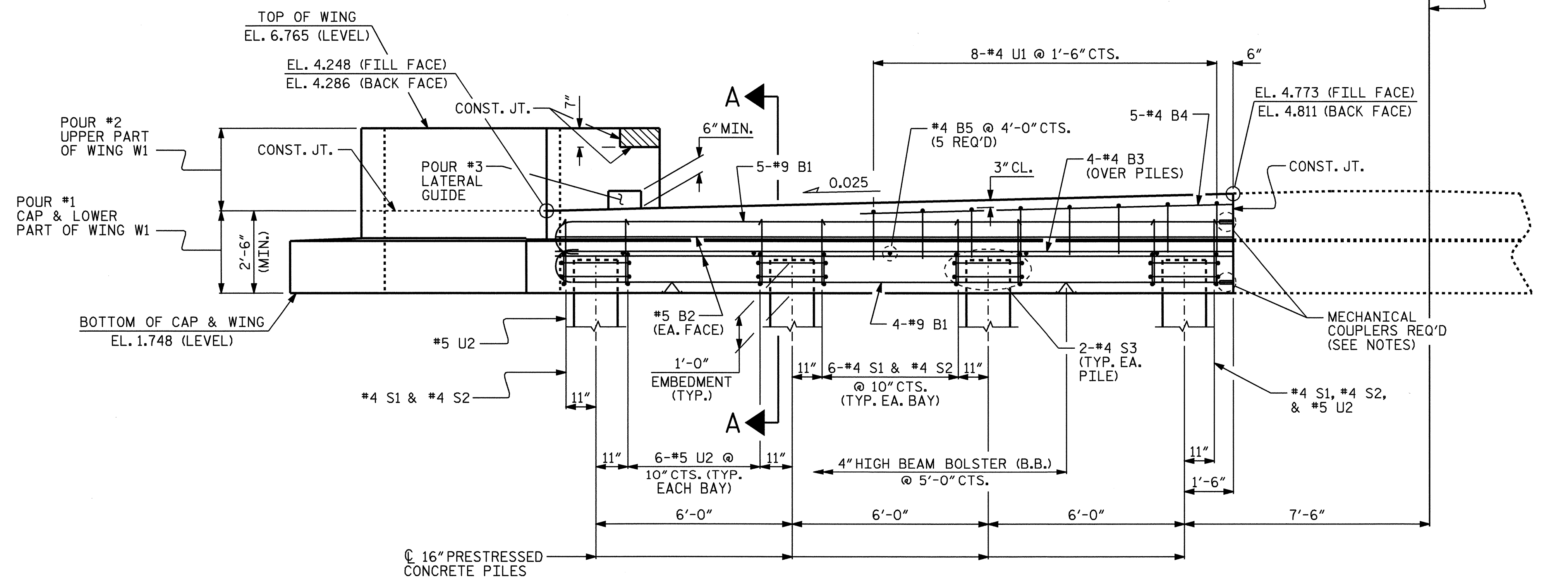
PLAN (STAGE 1)

(FOR CLARITY, SHEET PILES NOT SHOWN IN PLAN VIEW)



LATERAL GUIDE DETAIL

(STAGE 1 SHOWN, STAGE 2 SIMILAR)



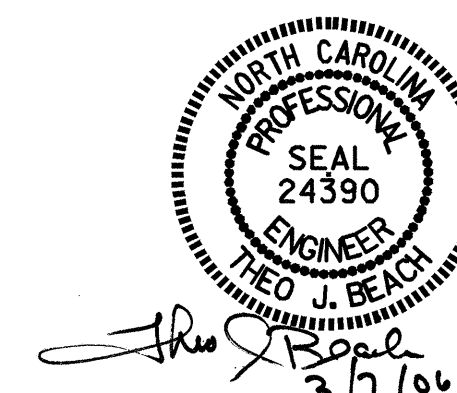
ELEVATION (STAGE 1)

(FOR CLARITY, SHEET PILES NOT SHOWN)

PROJECT NO. B-3349
 HYDE COUNTY
 STATION: 15+69.00 -L-

SHEET 2 OF 6

STATE OF NORTH CAROLINA
 DEPARTMENT OF TRANSPORTATION
 RALEIGH
 SUBSTRUCTURE
 END BENT No. 2
 STAGE 1



REVISIONS						SHEET NO.
NO.	BY:	DATE:	NO.	BY:	DATE:	S-36
1			3			TOTAL SHEETS
2			4			44

DRAWN BY : P.C. BREWER DATE : 2/8/05
 CHECKED BY : S.B. WILLIAMS DATE : 2/21/05