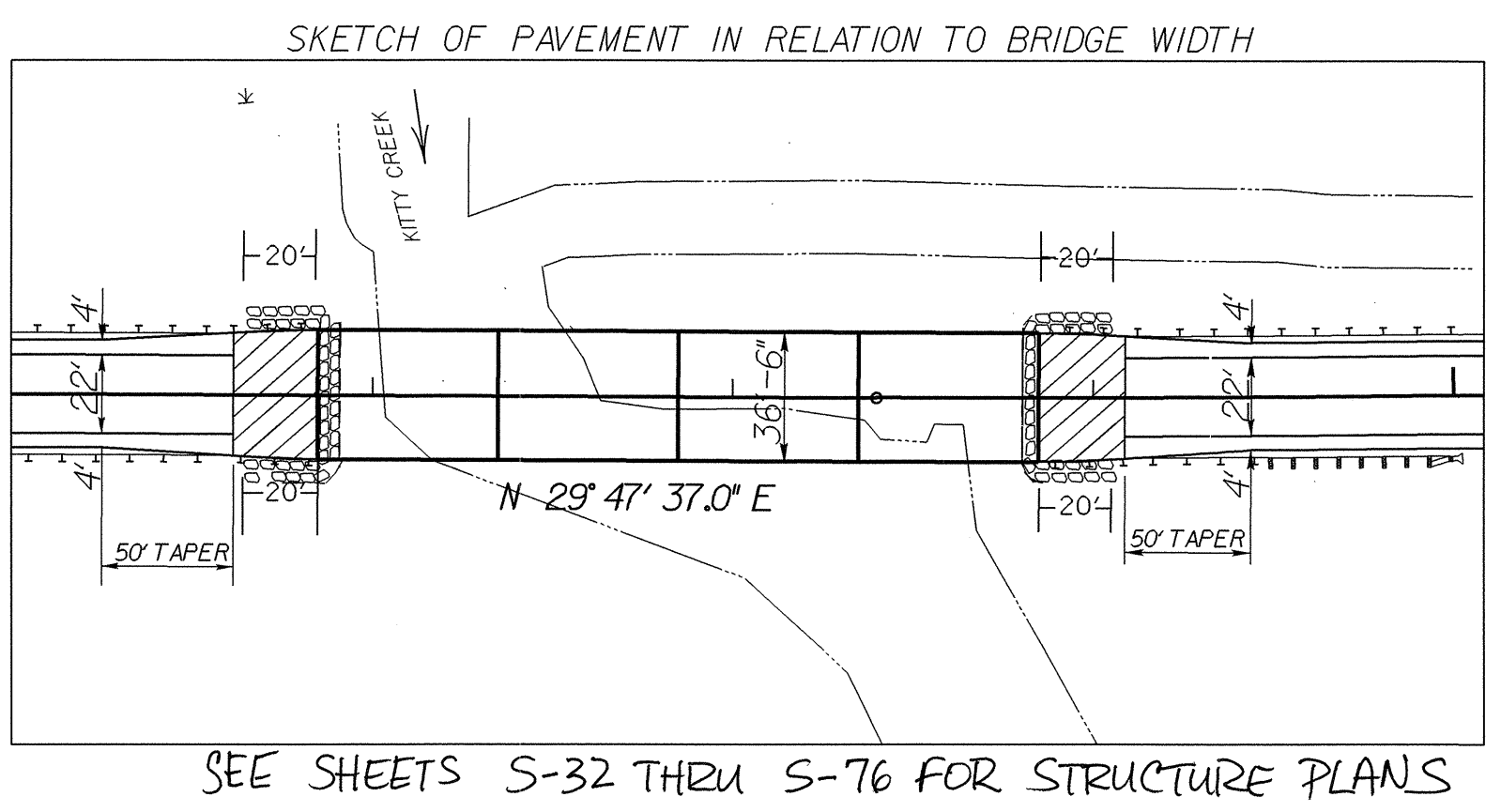
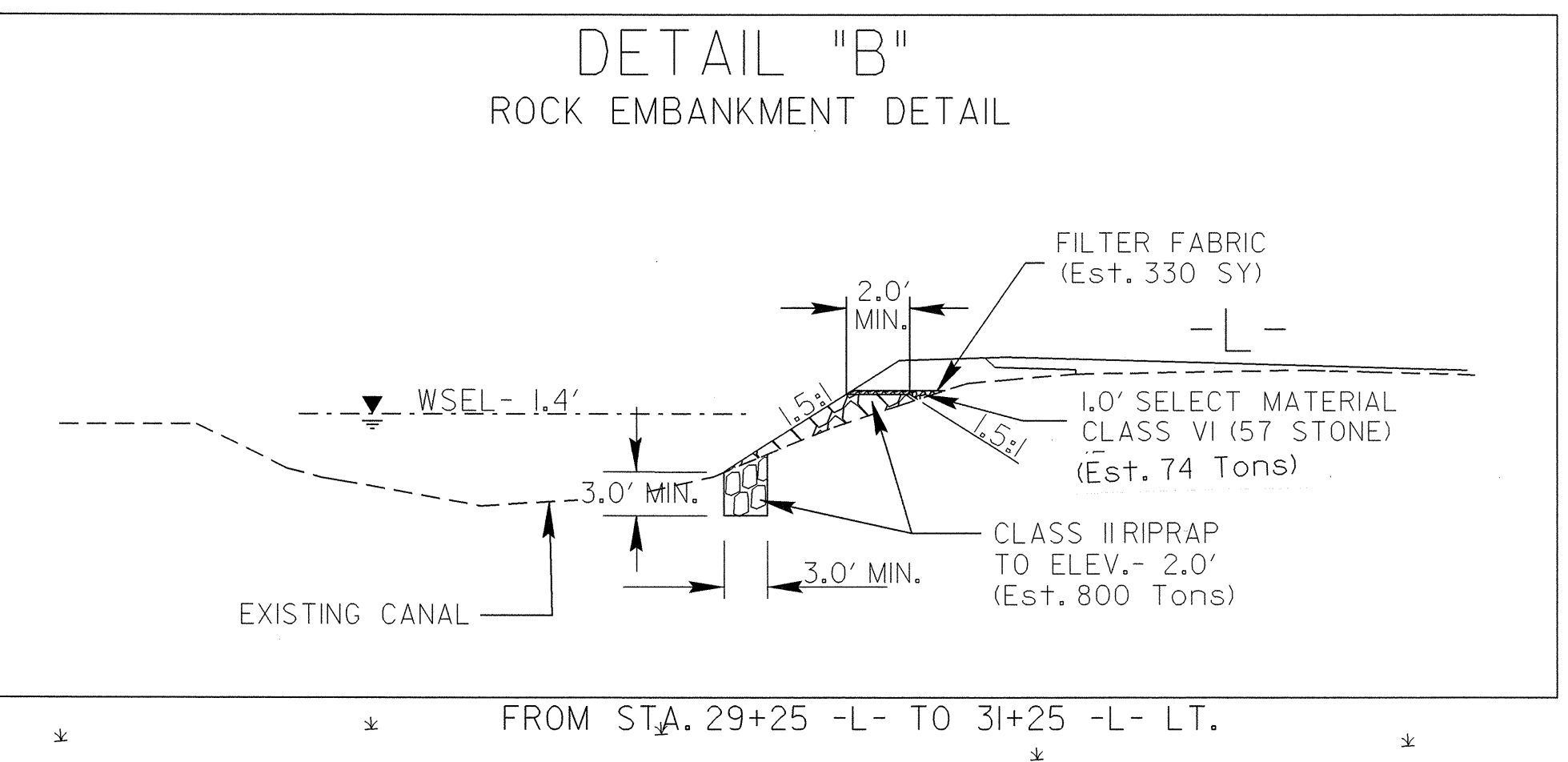


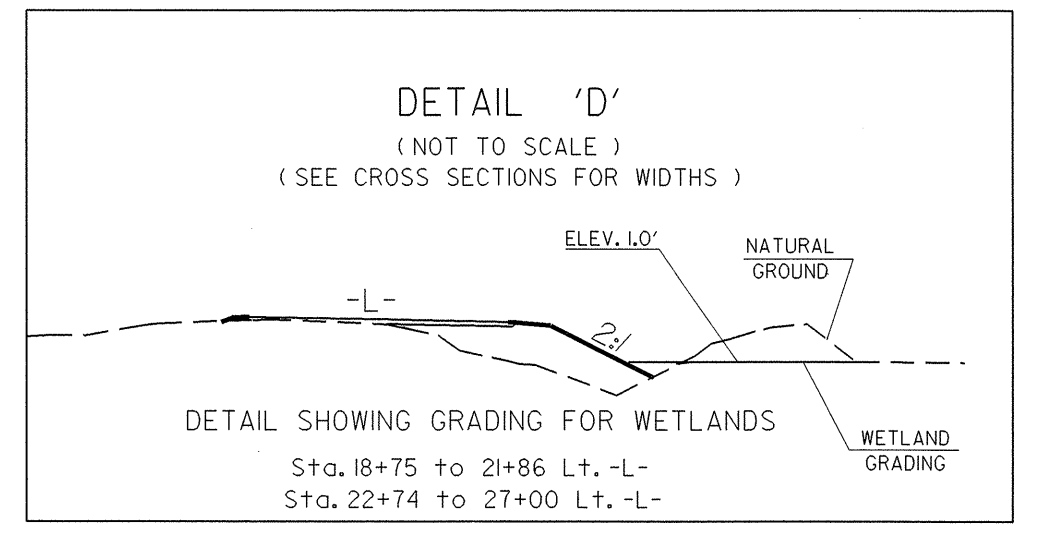
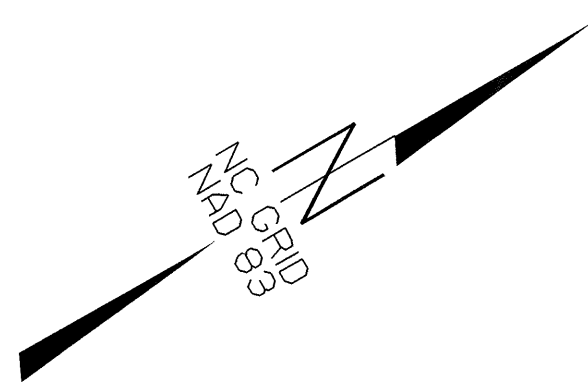
PROJECT REFERENCE NO. B-3348		SHEET NO. 5
RW SHEET NO.		
ROADWAY DESIGN ENGINEER SEAL 15435 JOHN C. LANSFORD	HYDRAULICS ENGINEER SEAL 18600 RANDALL C. HEGER	



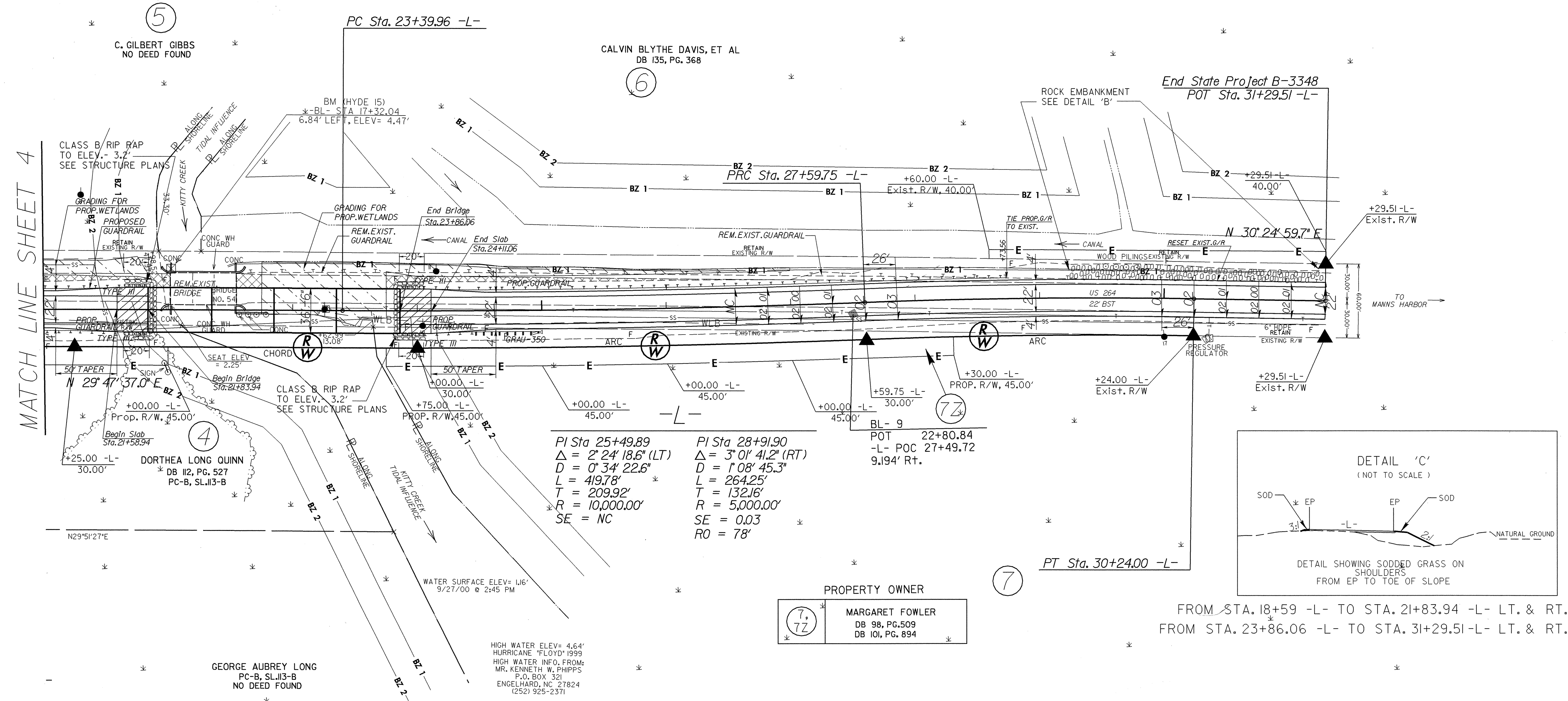
SEE SHEETS S-32 THRU S-76 FOR STRUCTURE PLANS



FROM STA. 29+25 -L- TO 31+25 -L- LT.



FROM STA. 10+00-L- TO STA. 18+09 -L- LT. & RT.
FROM STA. 18+59 -L- TO STA. 21+83.94 -L- LT. & RT.

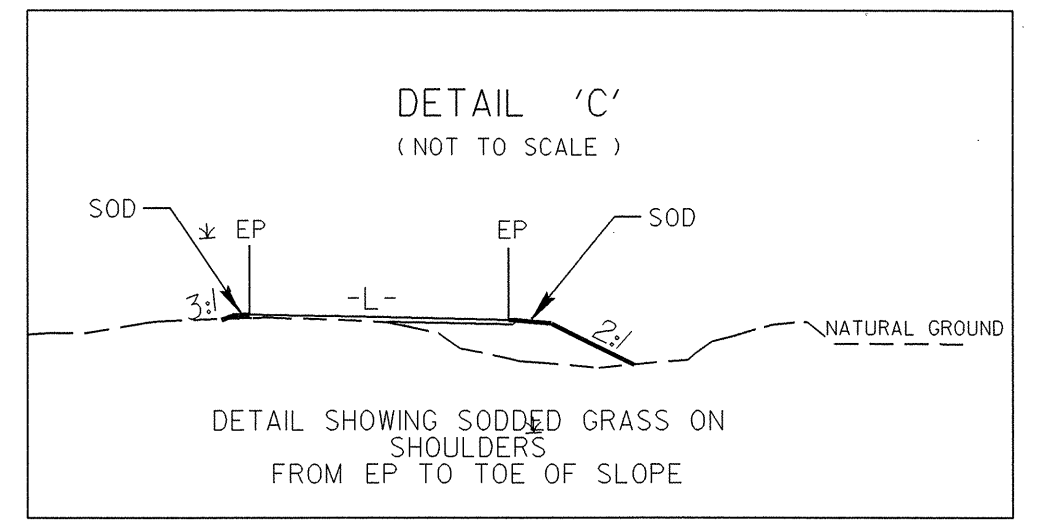
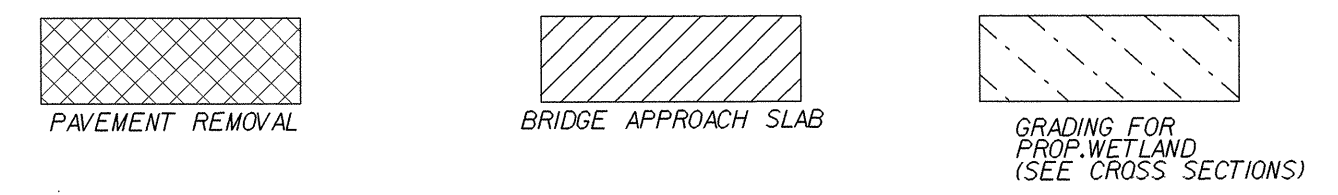


MATCH LINE SHEET 4

PI Sta 25+49.89
 $\Delta = 2' 24' 18.6''$ (LT)
 $D = 0' 34' 22.6''$
 $L = 419.78'$
 $T = 209.92'$
 $R = 10,000.00'$
 $SE = NC$

PI Sta 28+91.90
 $\Delta = 3' 0' 41.2''$ (RT)
 $D = 1' 08' 45.3''$
 $L = 264.25'$
 $T = 132.16'$
 $R = 5,000.00'$
 $SE = 0.03$
 $RO = 78'$

PROPERTY OWNER
 (7) MARGARET FOWLER
 DB 98, PG. 509
 DB 101, PG. 894



FROM STA. 18+59 -L- TO STA. 21+83.94 -L- LT. & RT.
FROM STA. 23+86.06 -L- TO STA. 31+29.51 -L- LT. & RT.