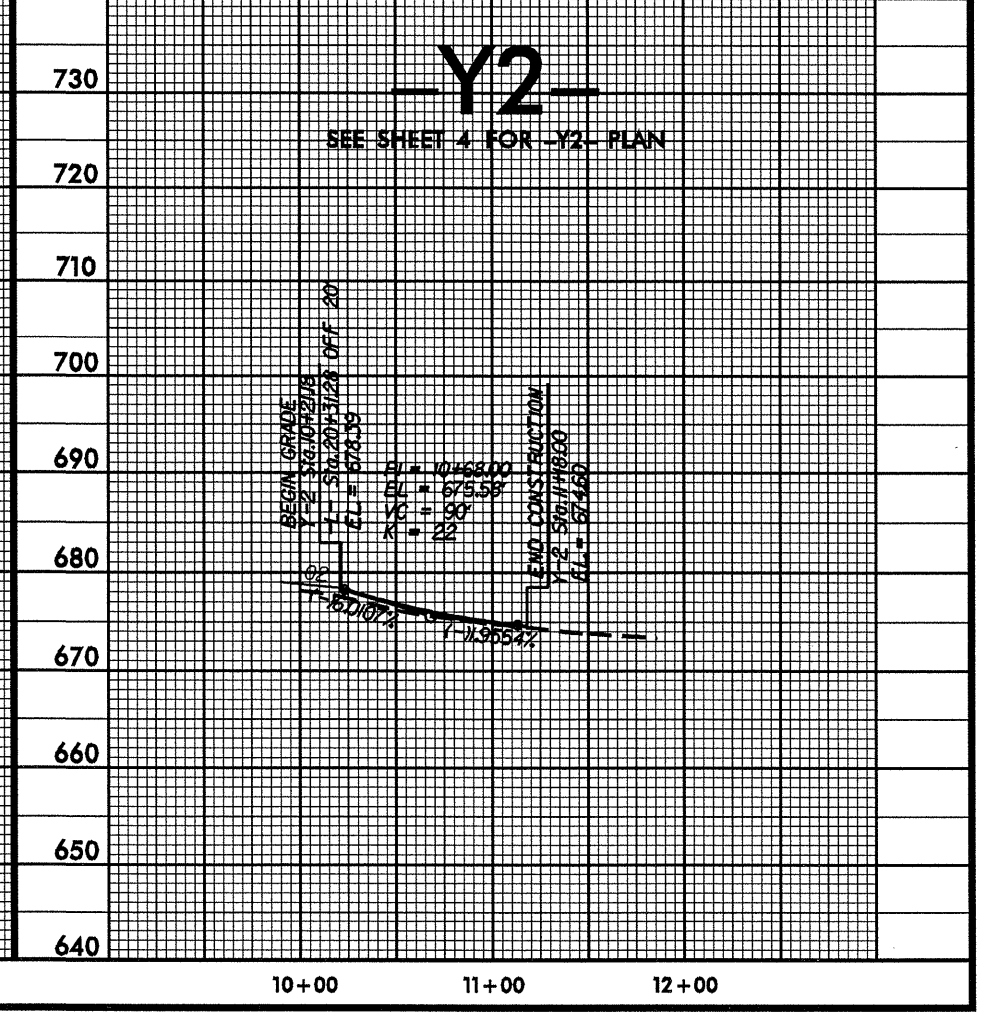
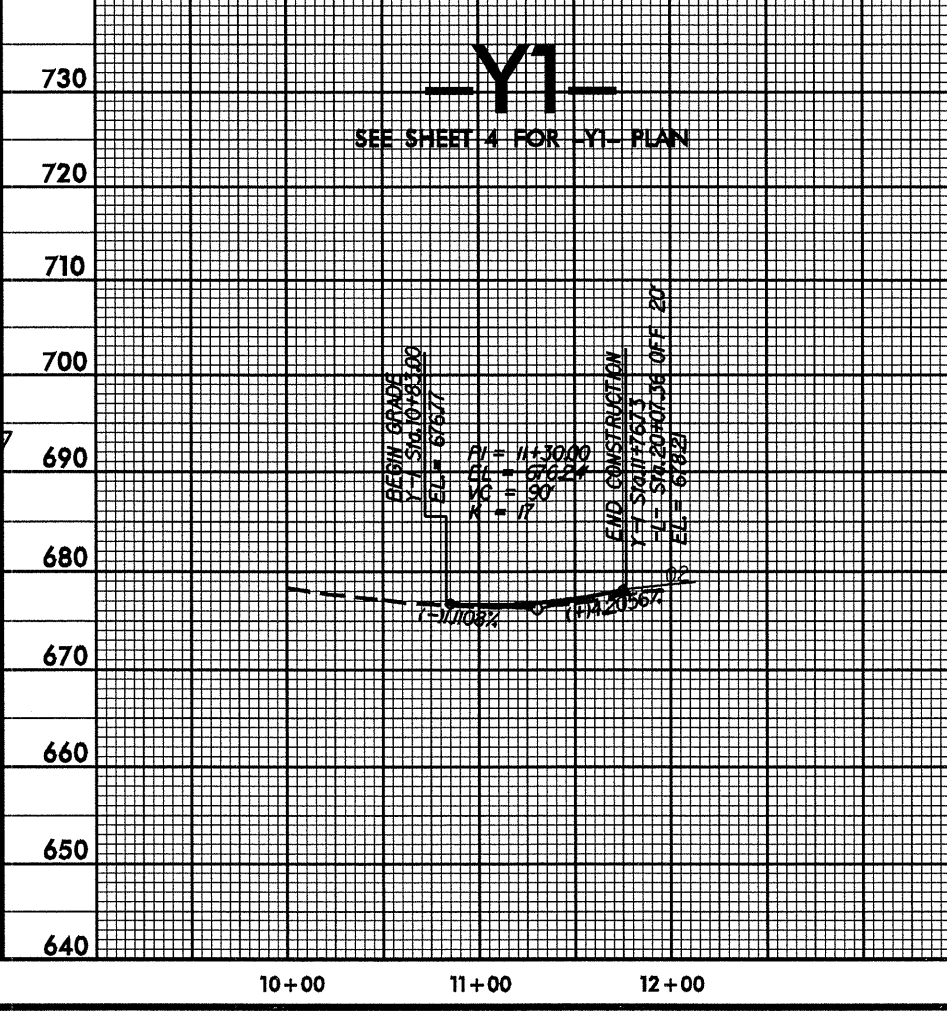
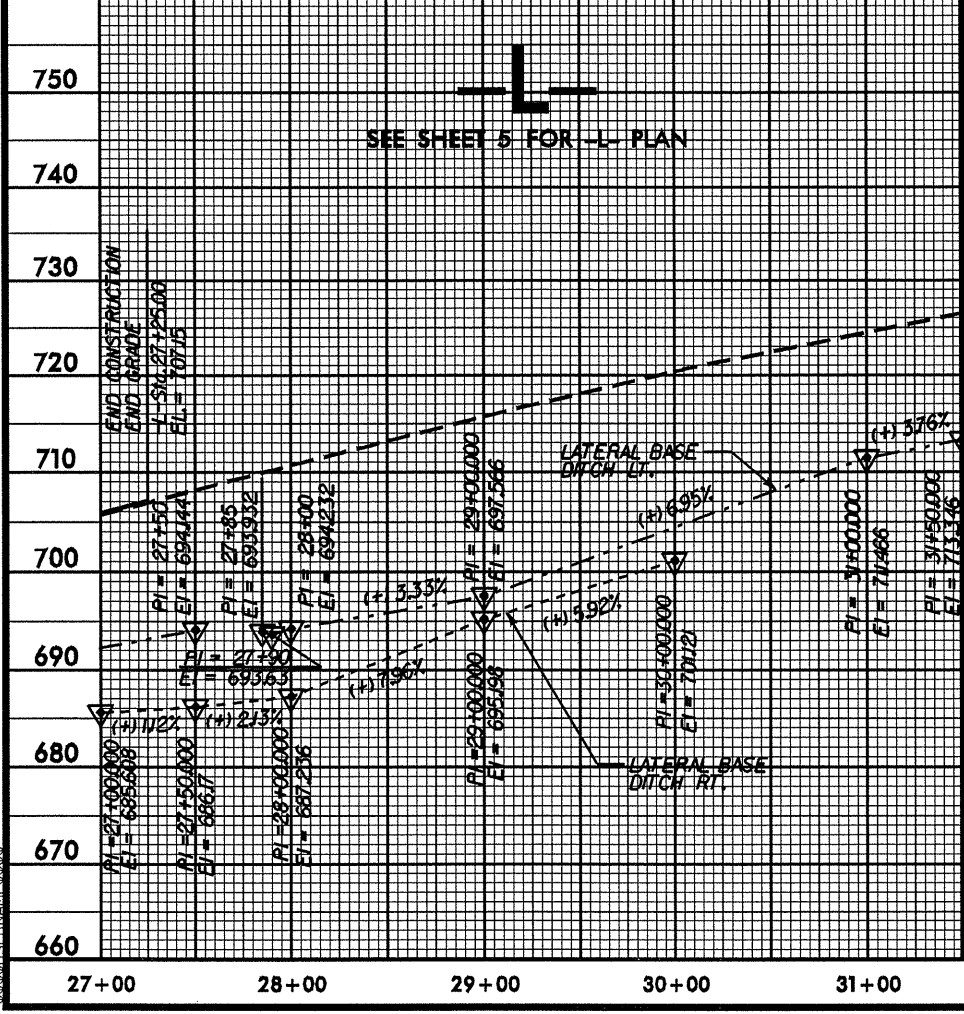
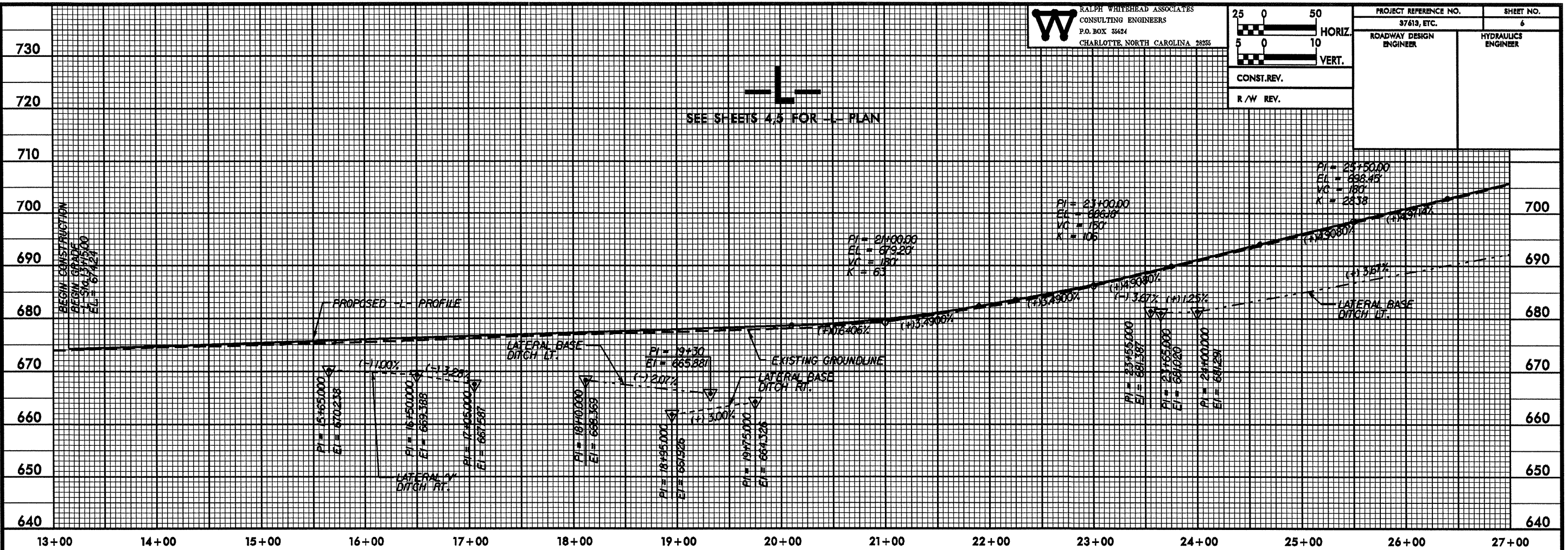


5/28/99

25	0	50
HORIZ.		
5	0	10
VERT.		
CONST. REV.		
R/W REV.		

PROJECT REFERENCE NO. 37619, ETC.	SHEET NO. 6
ROADWAY DESIGN ENGINEER	HYDRAULICS ENGINEER



SYSTEMS
 5/28/99