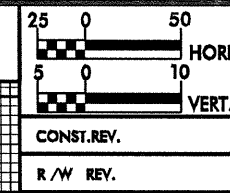
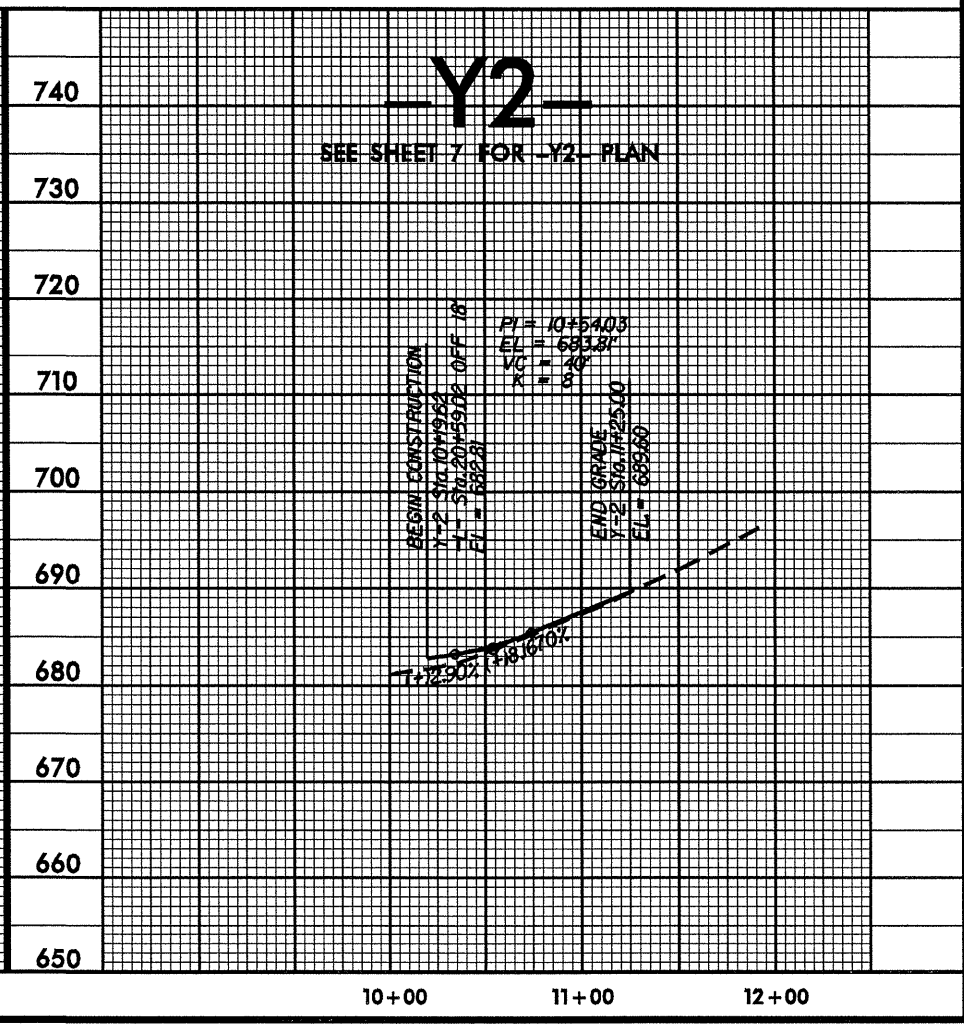
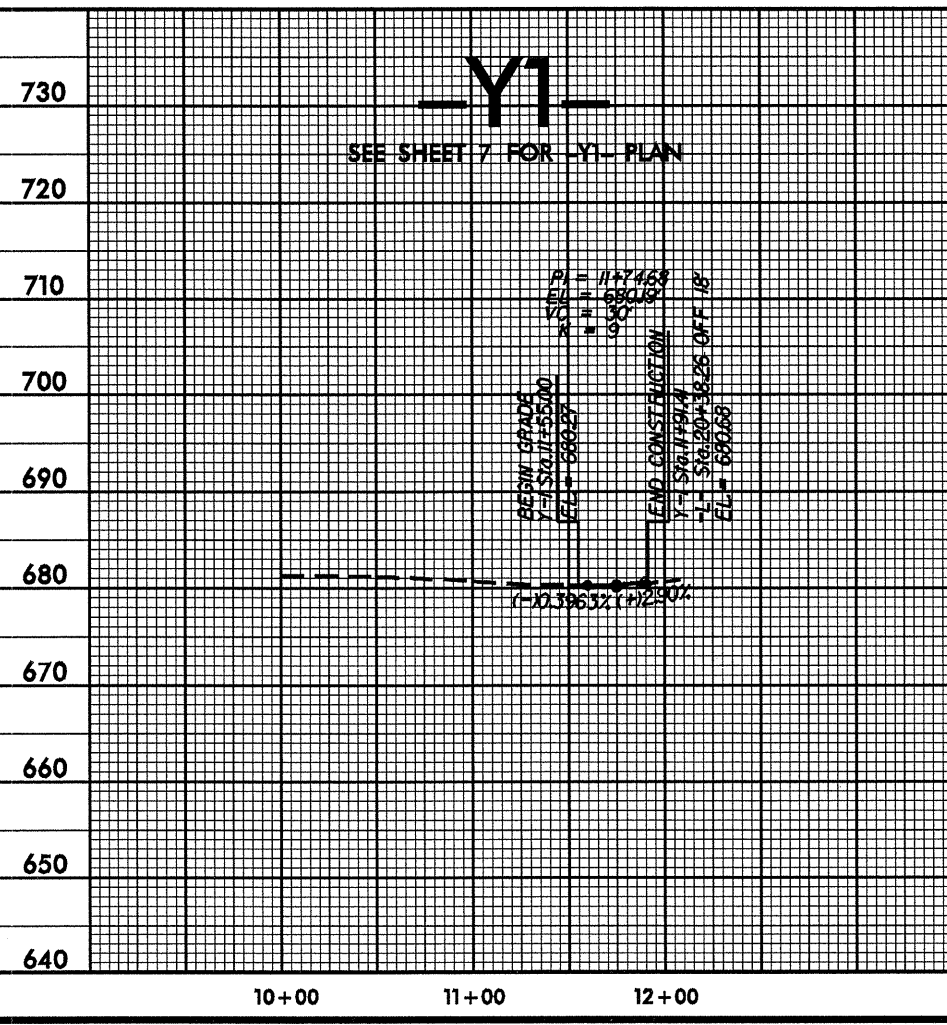
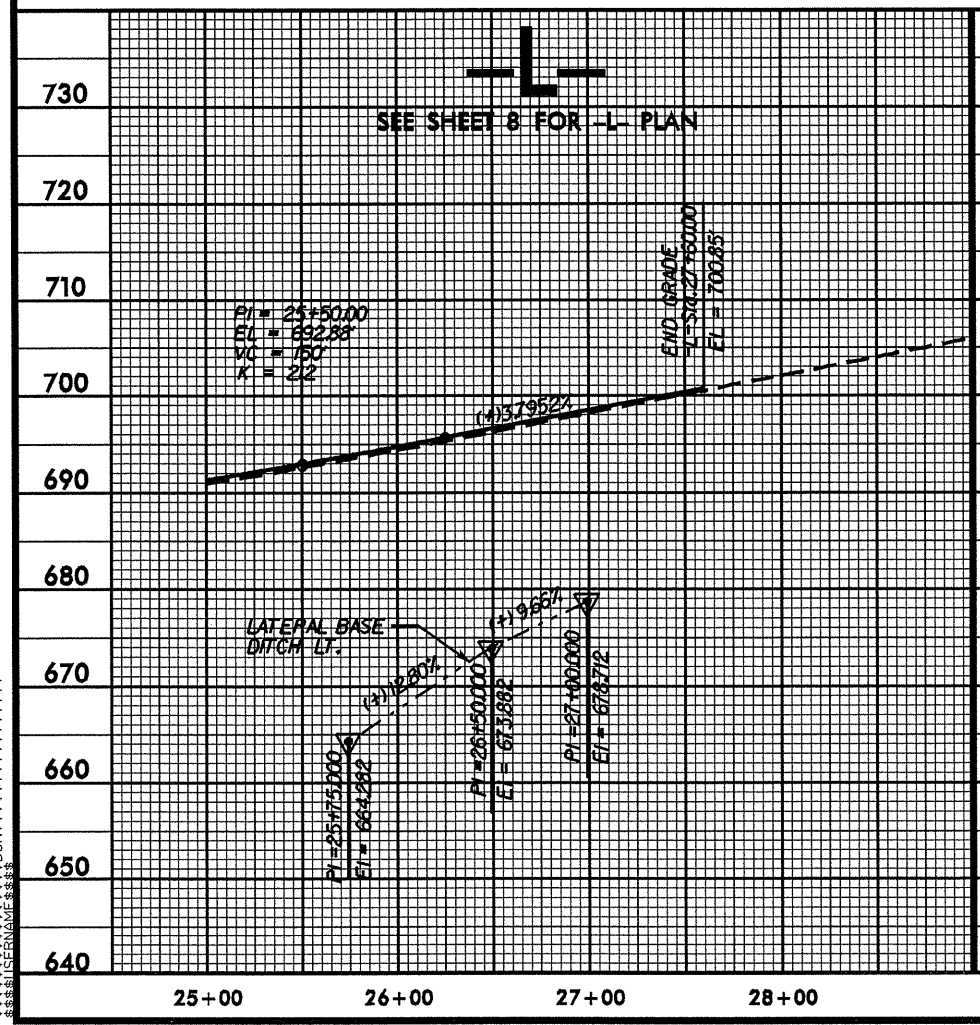
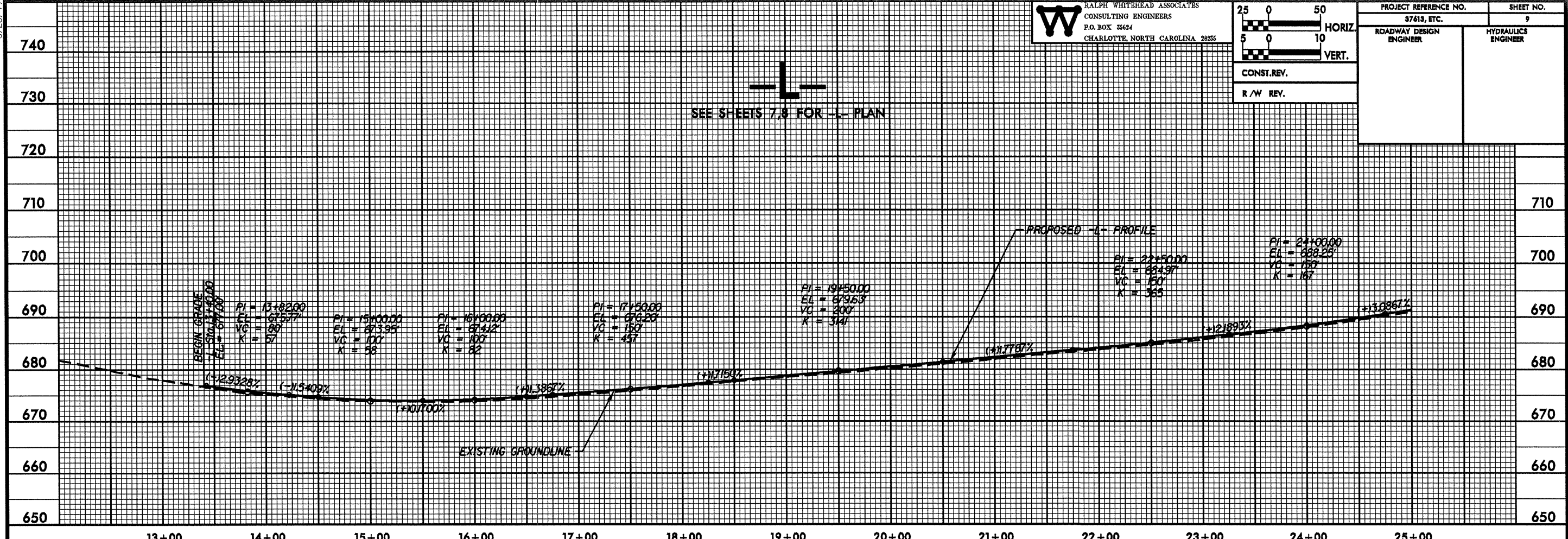


5/26/99

W RALPH WHITEHEAD ASSOCIATES
CONSULTING ENGINEERS
P.O. BOX 3624
CHARLOTTE, NORTH CAROLINA 28225



PROJECT REFERENCE NO. 37618, ETC.	SHEET NO. 9
ROADWAY DESIGN ENGINEER	HYDRAULICS ENGINEER
CONST. REV.	
R/W REV.	



SYSTEMS DESIGN