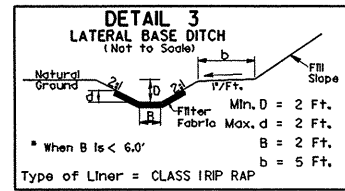


# MAP #4 US 64 / SR 1344,1390 & SR 1311

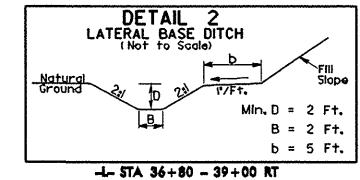
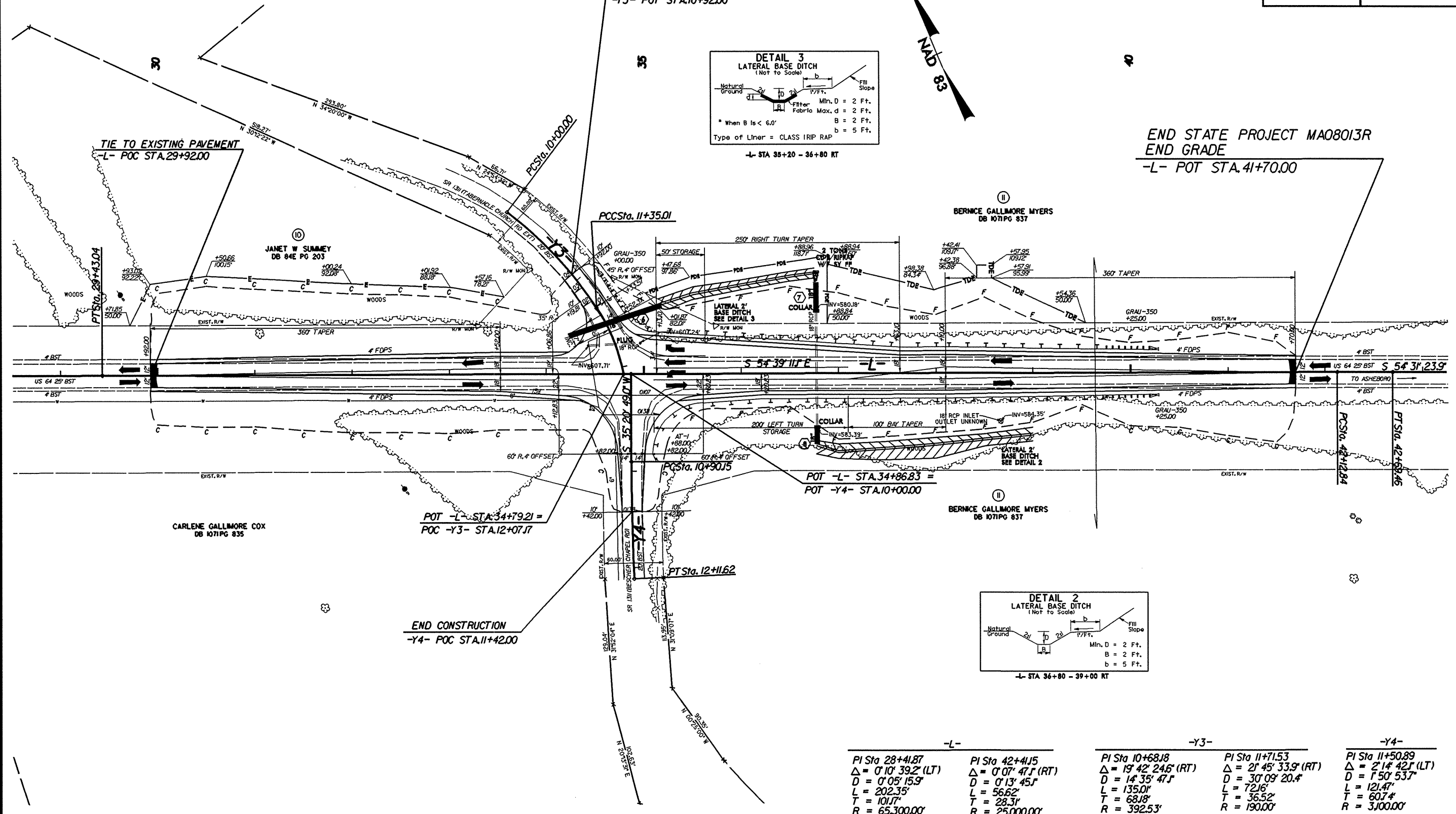
**W** RALPH WHITEHEAD ASSOCIATES  
CONSULTING ENGINEERS  
P.O. BOX 33624  
CHARLOTTE, NORTH CAROLINA 28235

PROJECT REFERENCE NO. 37613, ETC.	SHEET NO. 11
RW SHEET NO.	
ROADWAY DESIGN ENGINEER	HYDRAULICS ENGINEER

BEGIN CONSTRUCTION  
-Y3- POT STA.10+92.00



END STATE PROJECT MA08013R  
END GRADE  
-L- POT STA.41+70.00



-L-		-Y3-		-Y4-	
PI Sta 28+41.87	PI Sta 42+41.5	PI Sta 10+68.8	PI Sta 11+71.53	PI Sta 11+50.89	PI Sta 12+42.1 (LT)
$\Delta = 0' 10' 39.2''$ (LT)	$\Delta = 0' 07' 47.1''$ (RT)	$\Delta = 19' 42' 24.6''$ (RT)	$\Delta = 2' 45' 33.9''$ (RT)	$\Delta = 1' 50' 53.7''$	$\Delta = 2' 14' 42.1''$ (LT)
D = 0' 05' 15.9"	D = 0' 13' 45.1"	D = 14' 35' 47.1"	D = 30' 09' 20.4"	L = 121.47'	L = 121.47'
L = 202.35'	L = 56.62'	L = 135.01'	L = 72.16'	T = 68.18'	T = 60.74'
T = 101.71'	T = 28.31'	T = 68.18'	T = 36.52'	R = 392.53'	R = 3,000.00'
R = 65,300.00'	R = 25,000.00'	R = 392.53'	R = 190.00'		

SEE SHEET 12 FOR -L- PROFILE.  
SEE SHEET 13 FOR -Y- PROFILES.

B/17/99  
SYSTEMS  
DESIGN  
CONSULTING