

8/17/99

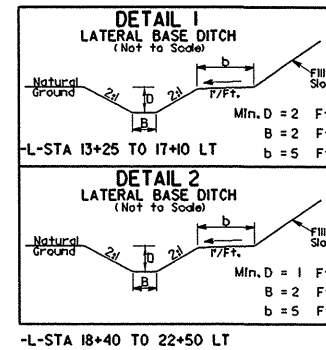
REVISIONS

MAP #7 US 64 / SR 1416,1318

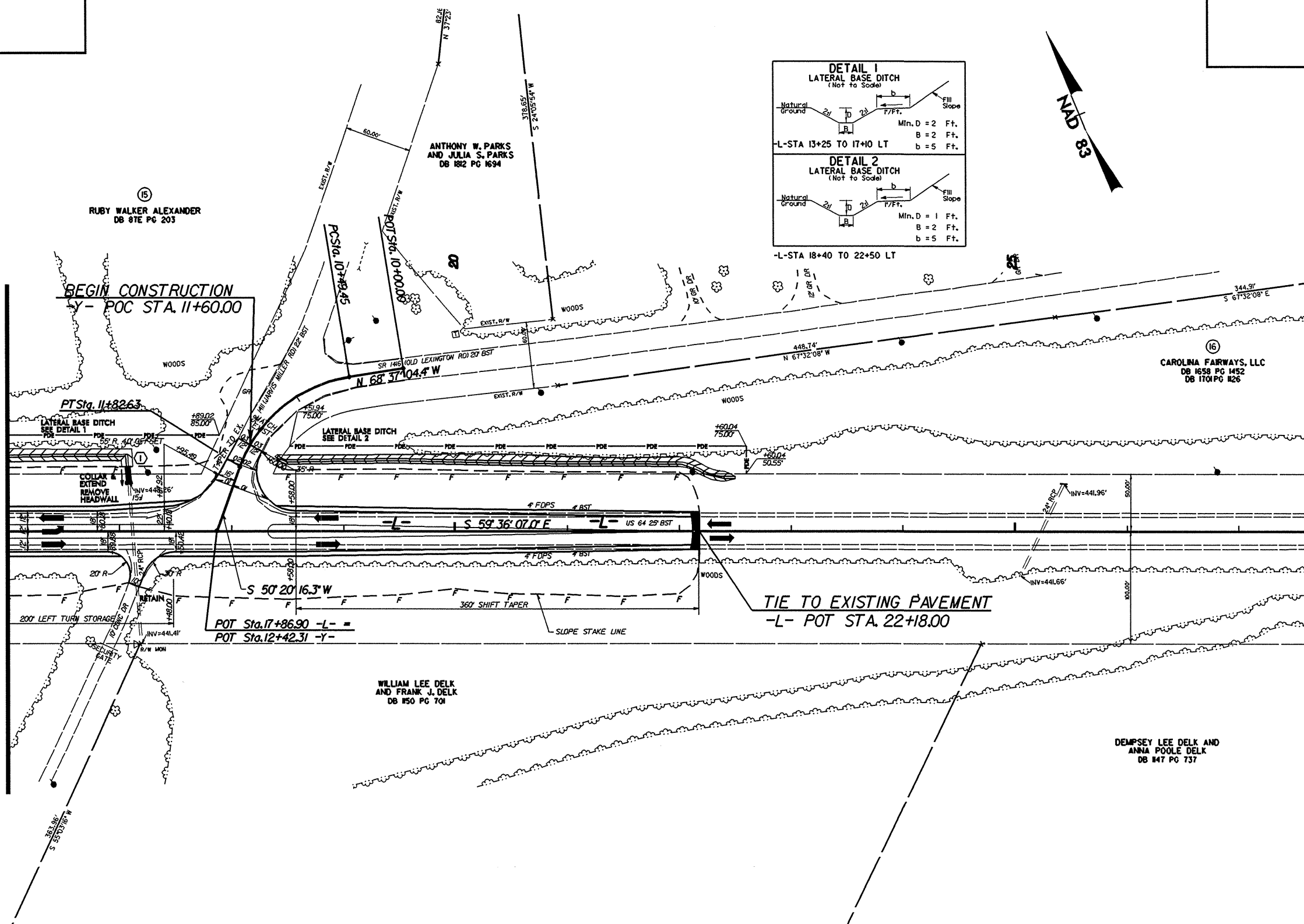


RALPH WHITEHEAD ASSOCIATES
CONSULTING ENGINEERS
P.O. BOX 35624
CHARLOTTE, NORTH CAROLINA 28235

PROJECT REFERENCE NO. 37613, ETC.	SHEET NO. 20
RW SHEET NO.	
ROADWAY DESIGN ENGINEER	HYDRAULICS ENGINEER



MATCHLINE -L- STA. 16+00.00
SEE SHEET 19



-Y-

PI Sta 11+23.15
 $\Delta = 61^{\circ}02'39.3"$ (LT)
 $D = 45^{\circ}50'11.8"$
 $L = 133.18'$
 $T = 73.70'$
 $R = 125.00'$

SEE SHEET 23 FOR -L- PROFILE.
SEE SHEET 25 FOR -Y- PROFILES.

SYSTEMS
CONSULTING
ENGINEERS