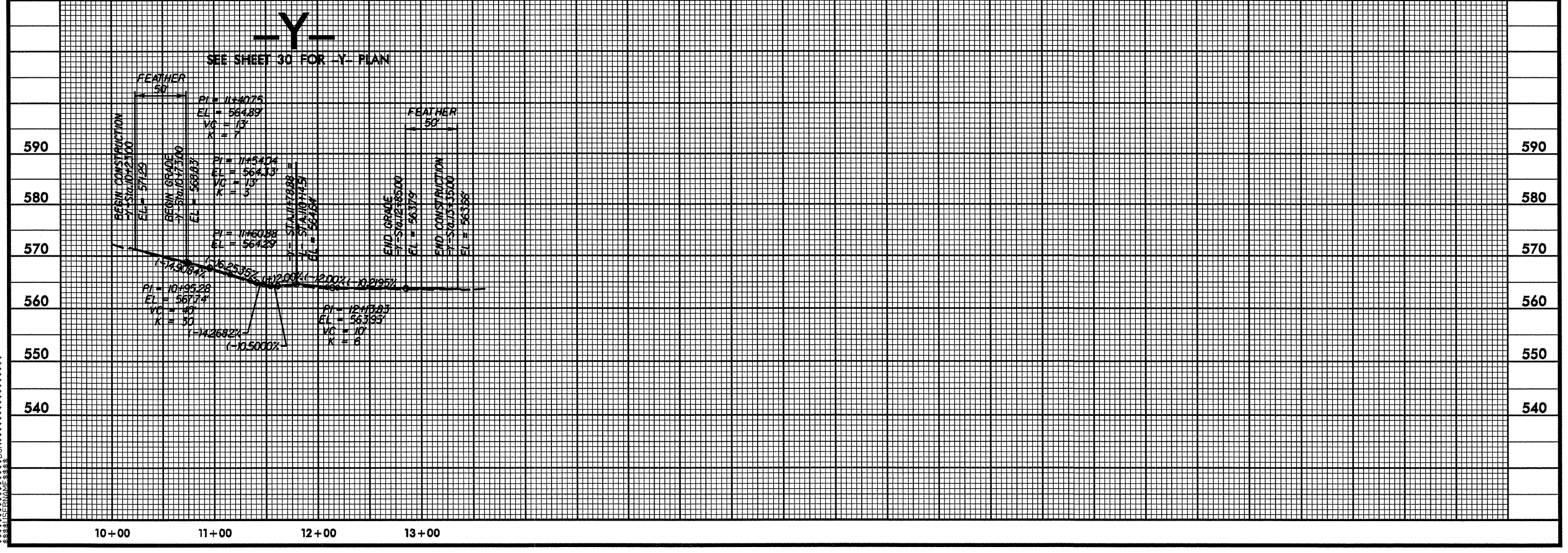
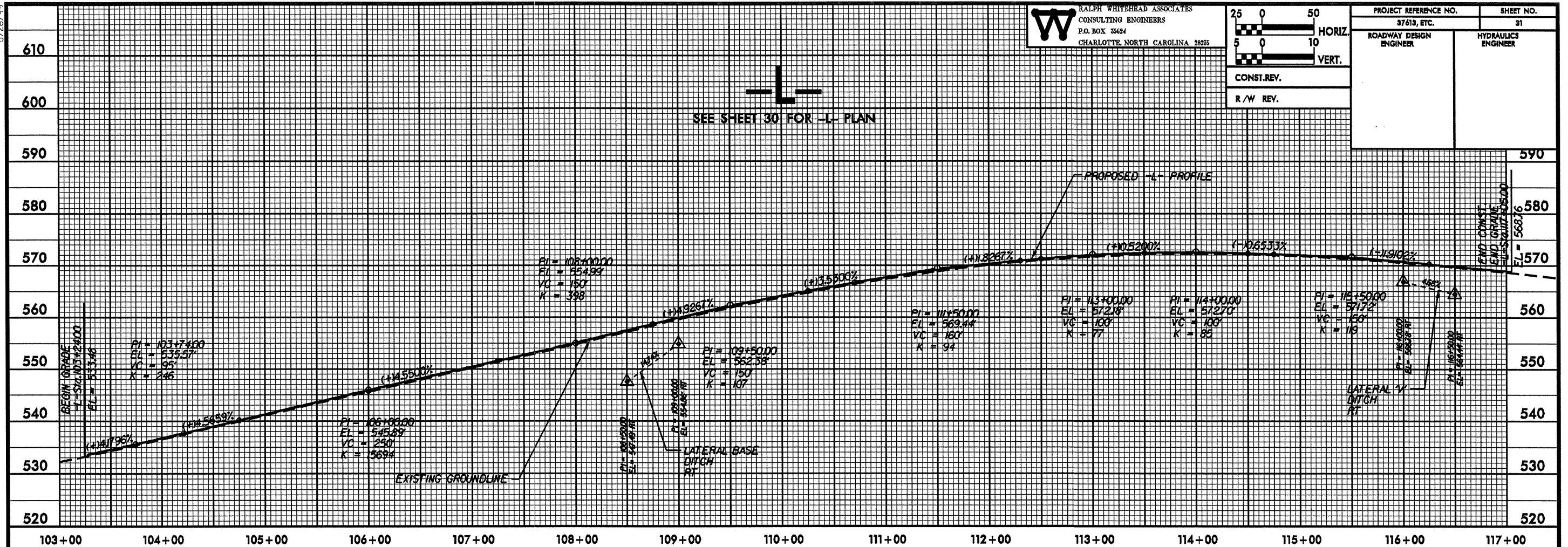


5/28/99

**W** RALPH WHITEHEAD ASSOCIATES  
CONSULTING ENGINEERS  
P.O. BOX 36624  
CHARLOTTE, NORTH CAROLINA 28235

25	0	50
HORIZ.		
5	0	10
VERT.		
CONST. REV.		
R/W REV.		

PROJECT REFERENCE NO. 37613, ETC.	SHEET NO. 31
ROADWAY DESIGN ENGINEER	HYDRAULICS ENGINEER



5/28/99