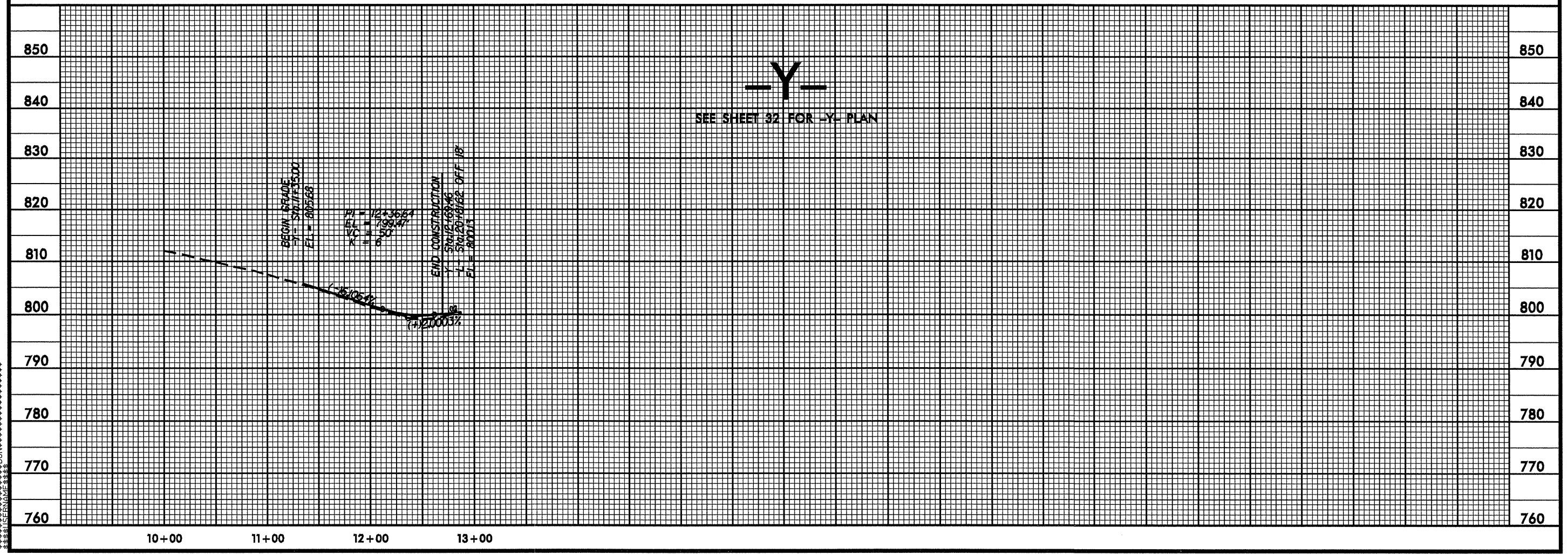
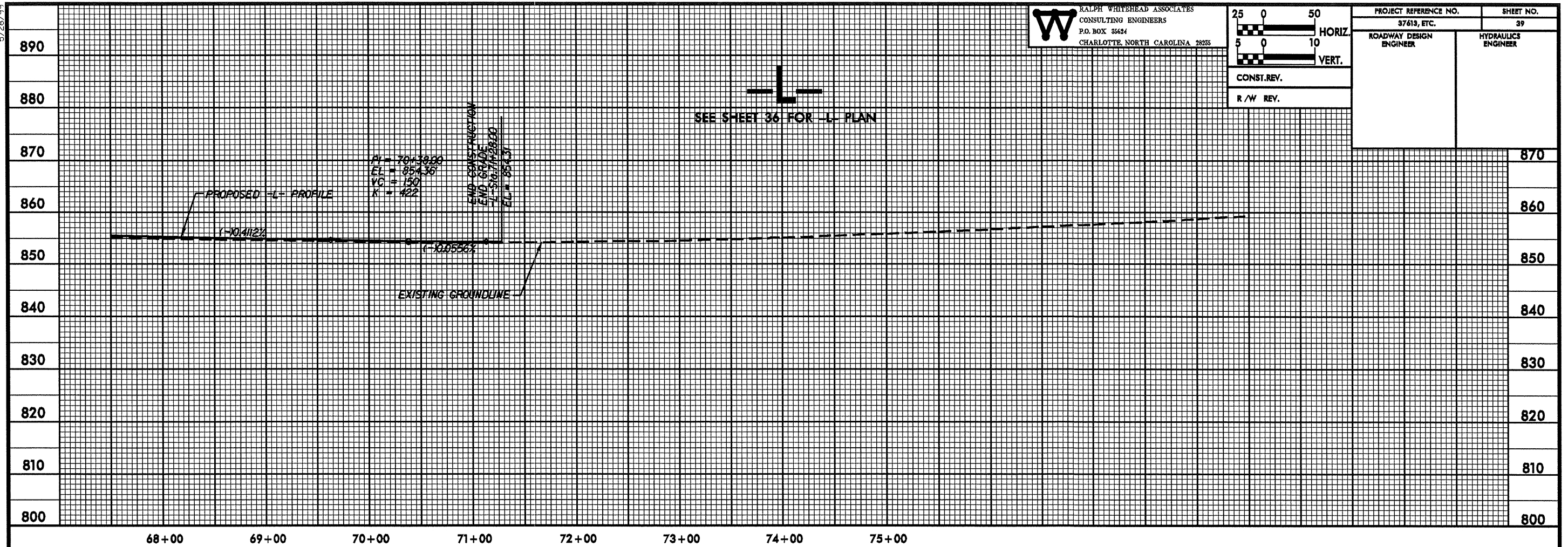


5/28/99

W RALPH WHITEHEAD ASSOCIATES
CONSULTING ENGINEERS
P.O. BOX 36624
CHARLOTTE, NORTH CAROLINA 28235

25	0	50
HORIZ.		
5	0	10
VERT.		
CONST. REV.		
R/W REV.		

PROJECT REFERENCE NO. 37613, ETC.	SHEET NO. 39
ROADWAY DESIGN ENGINEER	HYDRAULICS ENGINEER



SYTIME
DESIGN