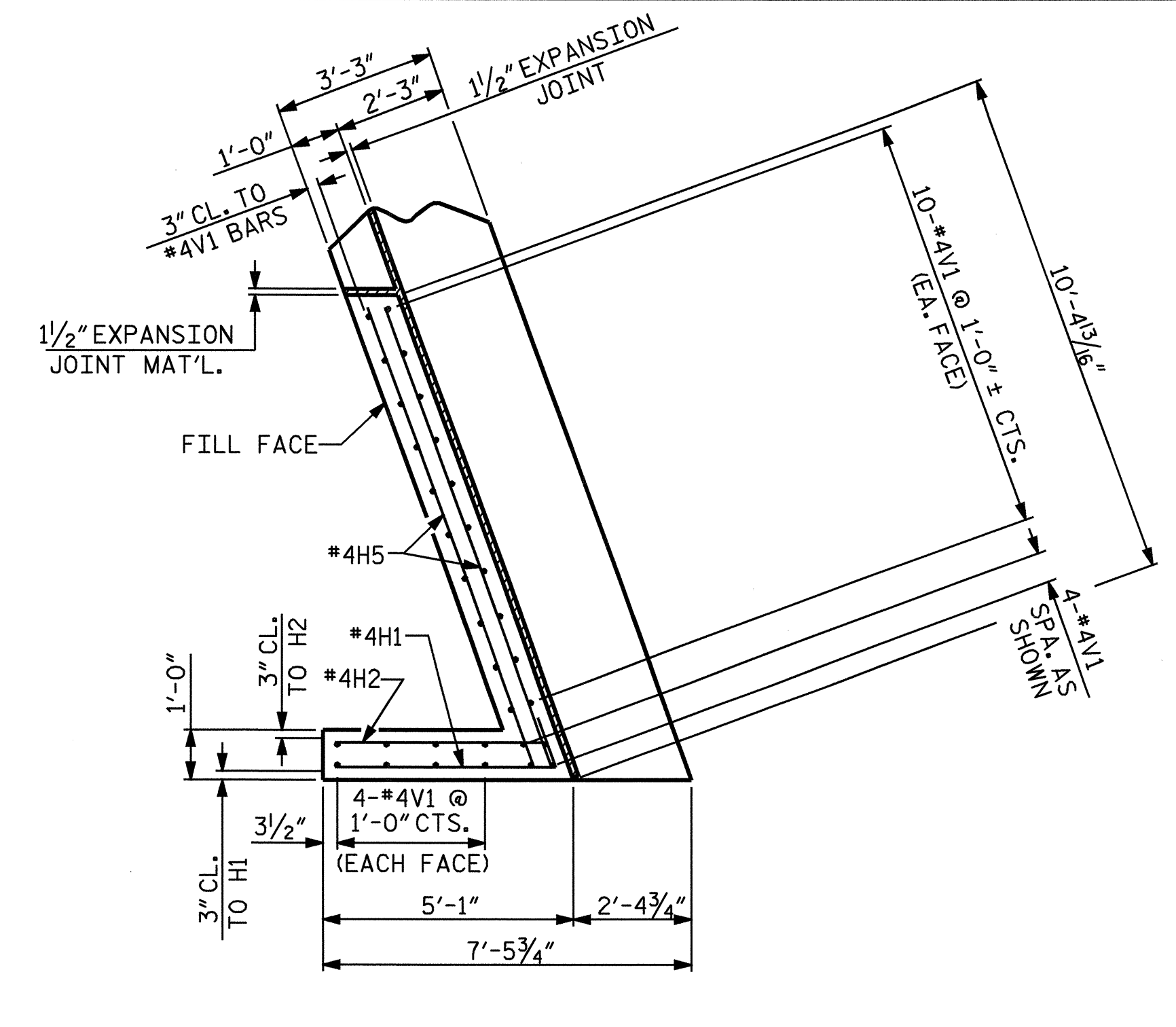
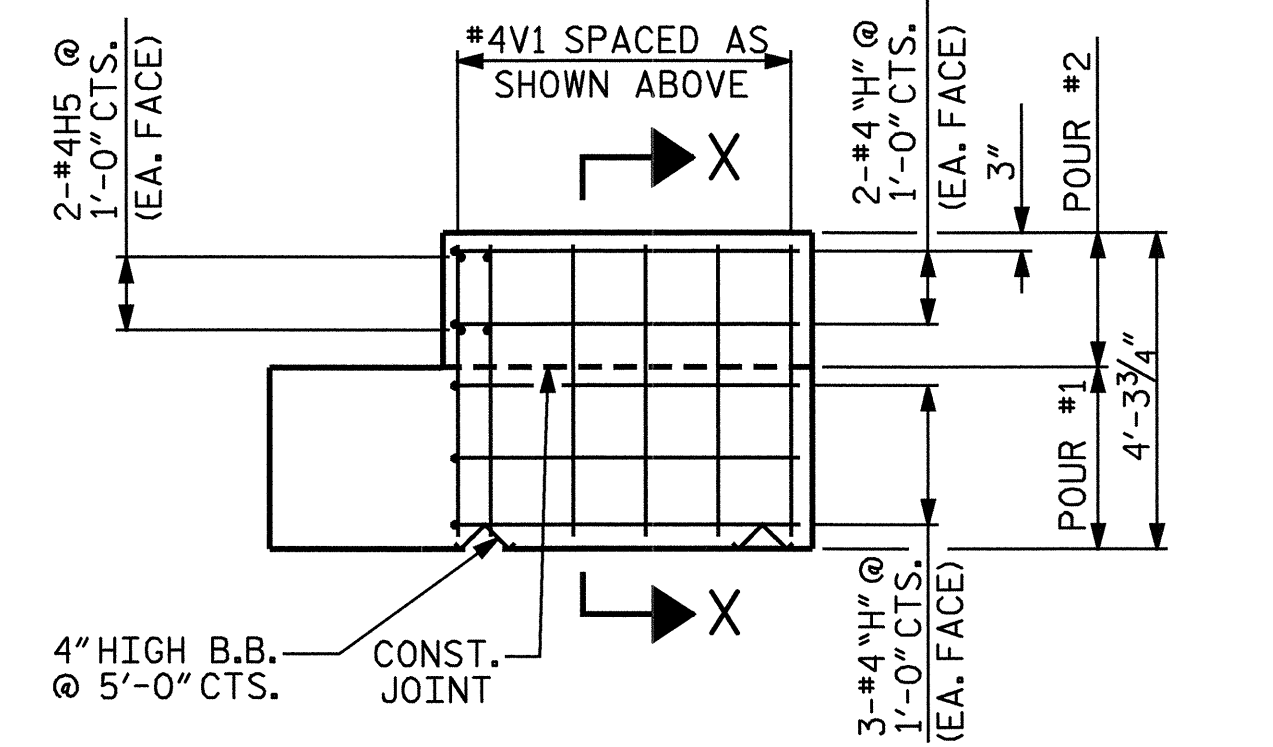


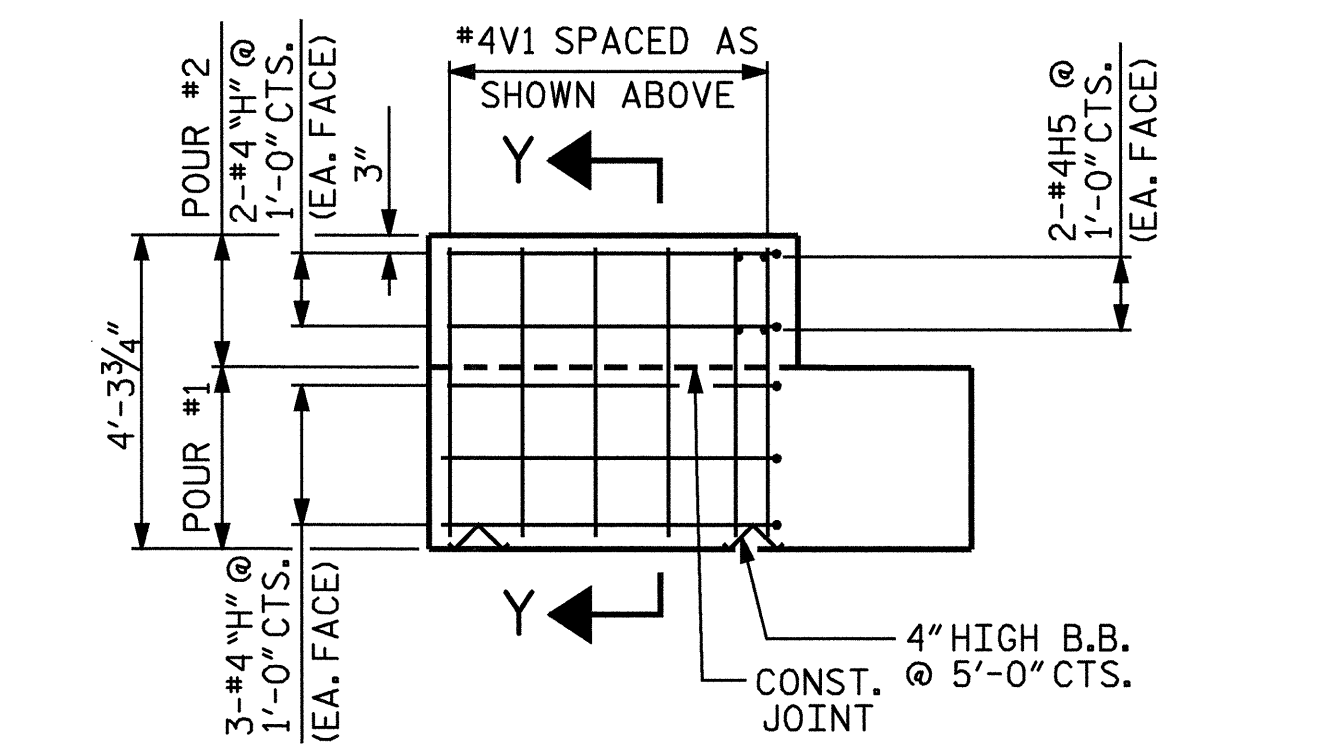
PLAN OF LEFT WING - W1



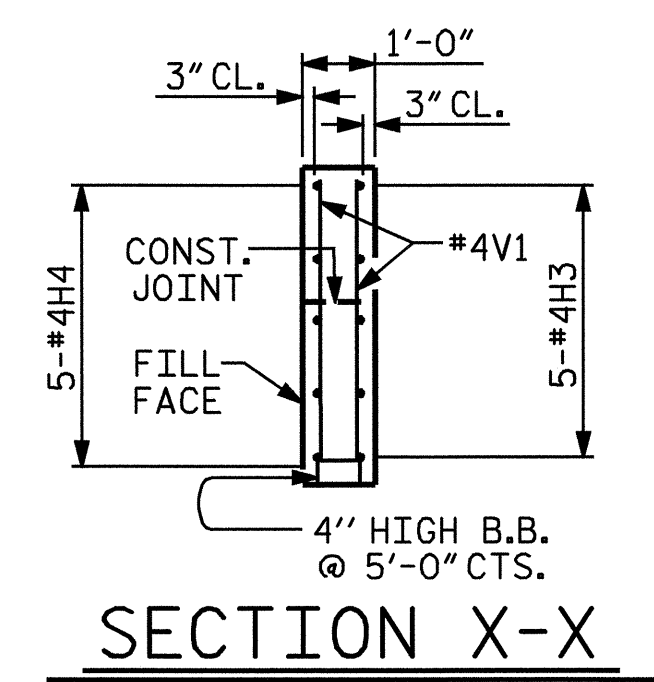
PLAN OF RIGHT WING - W2



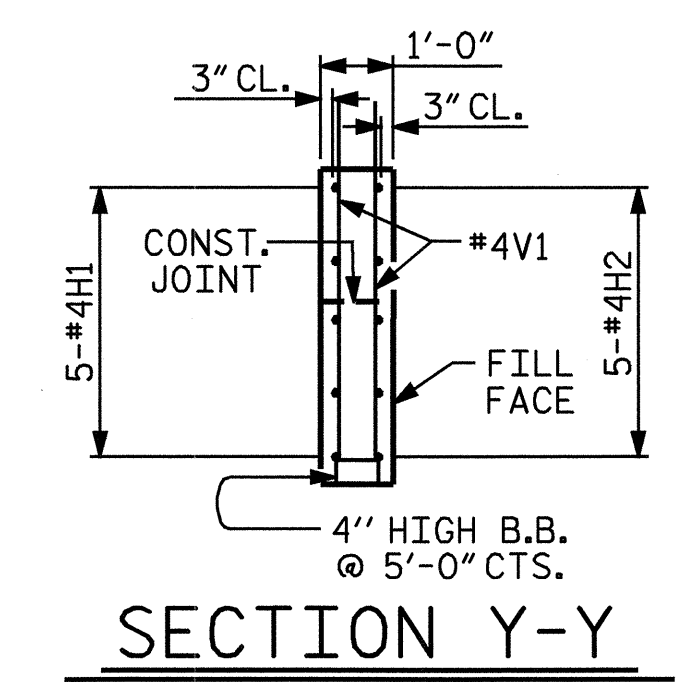
ELEVATION OF LEFT WING - W1



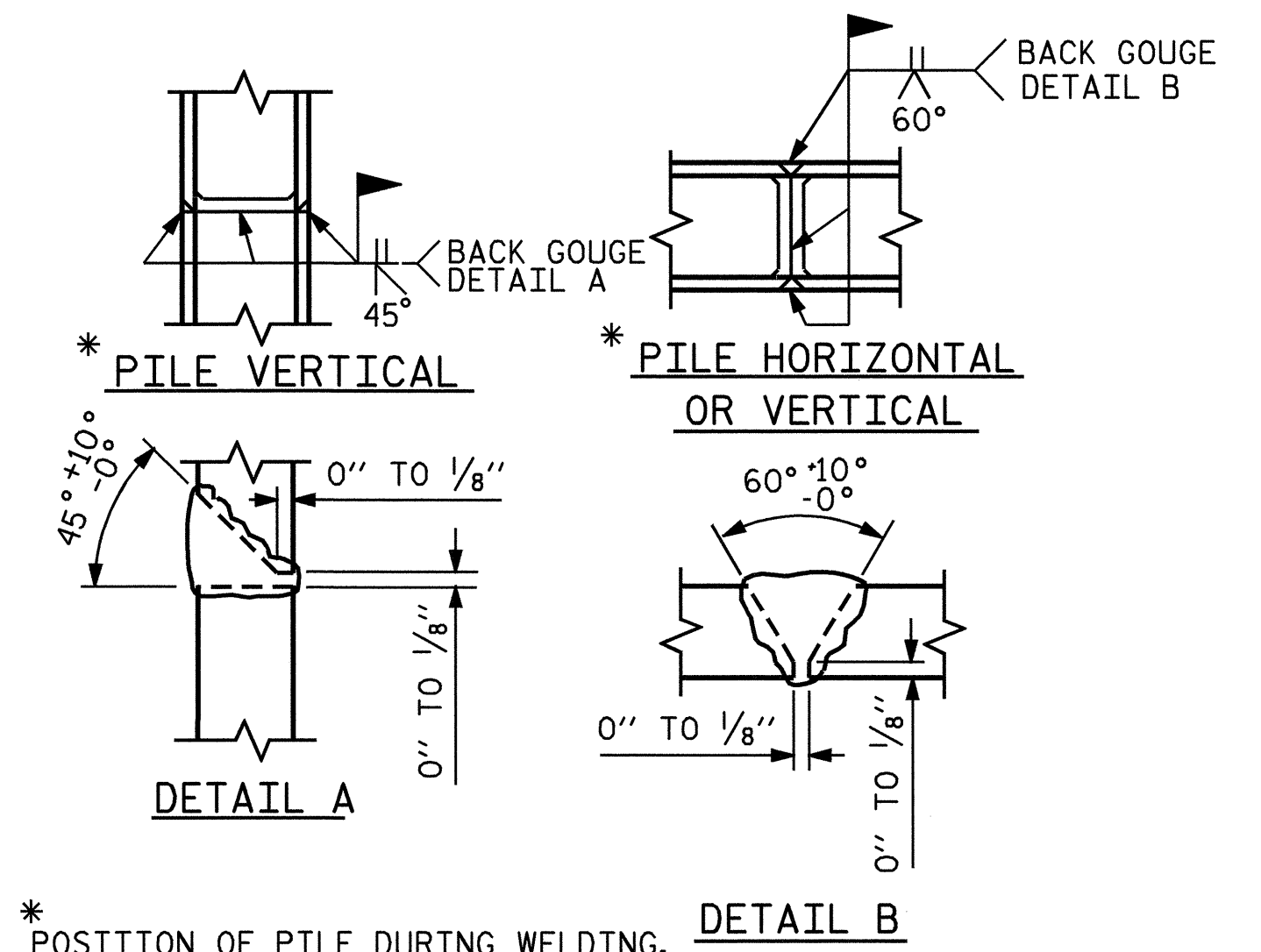
ELEVATION OF RIGHT WING - W2



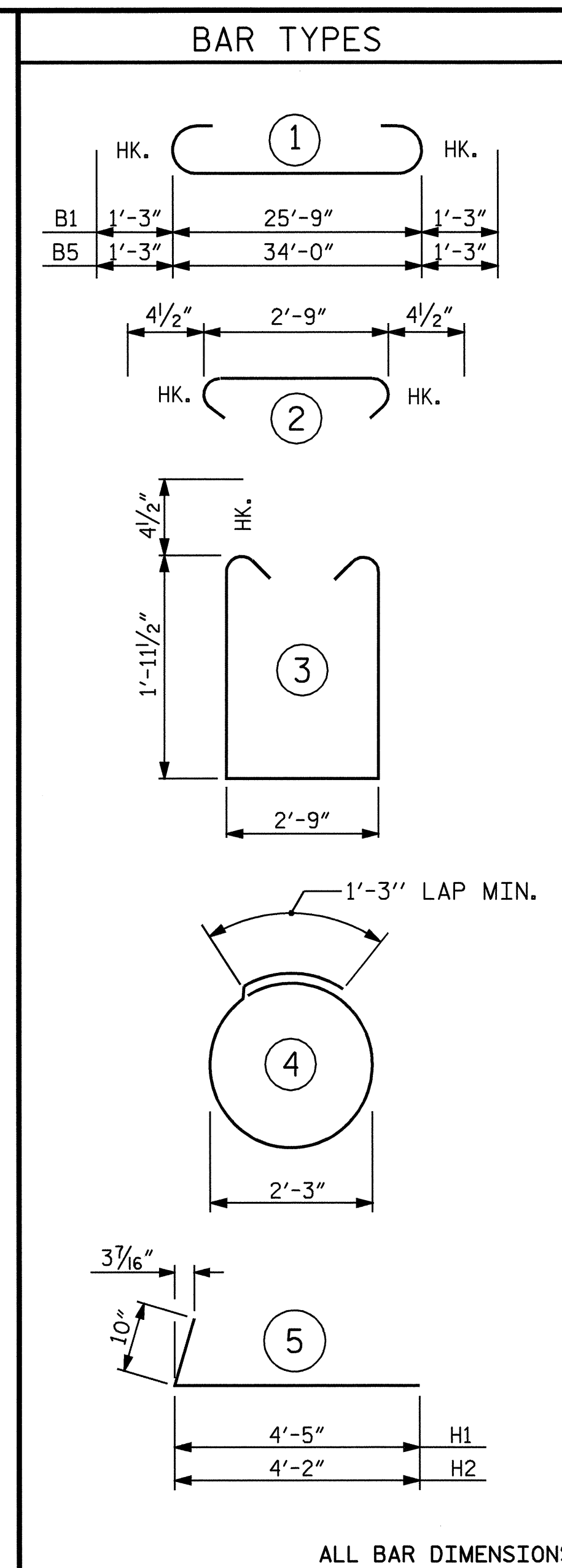
SECTION X-X



SECTION Y-Y

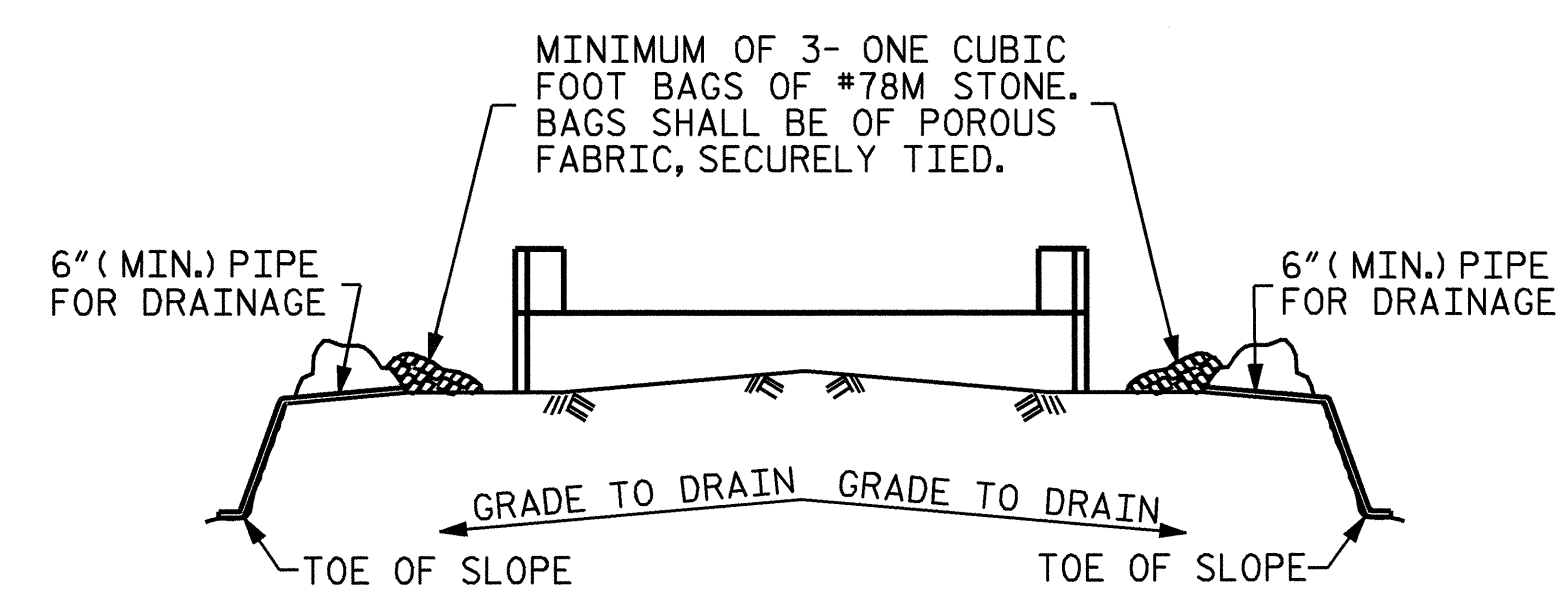


PILE SPLICE DETAILS



ALL BAR DIMENSIONS ARE OUT TO OUT.

BAR TYPES		BILL OF MATERIAL					BILL OF MATERIAL						
		END BENT 1 (STAGE 1)					END BENT 1 (STAGE 2)						
BAR	NO.	SIZE	TYPE	LENGTH	WEIGHT	BAR	NO.	SIZE	TYPE	LENGTH	WEIGHT		
*B1	9	9	1	28-3	864	*B4	9	4	STR	2-9	17		
*B2	2	5	STR	25-9	54	*B5	9	9	1	36-6	1117		
*B3	4	4	STR	25-9	69	*B6	2	5	STR	34-0	71		
*B4	6	4	STR	2-9	11	*B7	8	4	STR	18-5	98		
*D1	16	6	STR	1-6	36	*D1	20	6	STR	1-6	45		
*H1	5	4	5	5-3	18	*D2	6	6	STR	3-0	27		
*H2	5	4	5	5-0	17	*H3	5	4	6	5-5	18		
*H5	4	4	STR	9-10	26	*H4	5	4	6	5-8	19		
*S1	23	4	2	3-6	54	*H5	4	4	STR	9-10	26		
*S2	23	4	3	7-5	114	*S1	31	4	2	3-6	72		
*S3	10	4	4	8-4	56	*S2	31	4	3	7-5	154		
						*S3	12	4	4	8-4	67		
*V1	32	4	STR	3-10	82	*V1	30	4	STR	3-10	77		
*EPOXY COATED REINFORCING STEEL					LBS.	1401	*EPOXY COATED REINFORCING STEEL					LBS.	1808
CLASS AA CONCRETE BREAKDOWN							CLASS AA CONCRETE BREAKDOWN						
POUR #1 (CAP & LOWER WING)=					8.3 CY.		POUR #1 (CAP & LOWER WING)=					10.8 CY.	
POUR #2 (BACKWALL & UPPER WING)=					1.0 CY.		POUR #2 (BACKWALL & UPPER WING)=					1.0 CY.	
CLASS AA CONCRETE TOTAL =					9.3 CY.		CLASS AA CONCRETE TOTAL =					11.8 CY.	
HP 14X73 STEEL PILES							HP 14X73 STEEL PILES						
No. = 5					LIN. FT. = 375		No. = 6					LIN. FT. = 450	
TOTAL BILL OF MATERIAL													
EPOXY COATED REINFORCING STEEL						3209 LBS.							
CLASS AA CONCRETE						21.1 CY.							
HP 14X73 STEEL PILES					No. = 11		825 LIN. FT.						



MINIMUM OF 3- ONE CUBIC FOOT BAGS OF #78M STONE. BAGS SHALL BE OF POROUS FABRIC, SECURELY TIED.

BAGGED STONE AND PIPE SHALL BE PLACED IMMEDIATELY AFTER COMPLETION OF END BENT EXCAVATION. PIPE MAY BE EITHER CONCRETE, CORRUGATED STEEL, CORRUGATED ALUMINUM ALLOY, OR CORRUGATED PLASTIC. PERFORATED PIPE WILL NOT BE ALLOWED.

BAGGED STONE SHALL REMAIN IN PLACE UNTIL THE ENGINEER DIRECTS THAT IT BE REMOVED. THE CONTRACTOR SHALL REMOVE AND DISPOSE OF SILT ACCUMULATIONS AT BAGGED STONE WHEN SO DIRECTED BY THE ENGINEER. BAGS SHALL BE REMOVED AND REPLACED WHENEVER THE ENGINEER DETERMINES THAT THEY HAVE DETERIORATED AND LOST THEIR EFFECTIVENESS.

NO SEPARATE PAYMENT WILL BE MADE FOR THIS WORK AND THE ENTIRE COST OF THIS WORK SHALL BE INCLUDED IN THE UNIT CONTRACT PRICE BID FOR THE SEVERAL PAY ITEMS.

TEMPORARY DRAINAGE AT END BENT

PROJECT NO. B-3445
CURRITUCK COUNTY
 STATION: 24+18.00 -L-

SHEET 2 OF 2

STATE OF NORTH CAROLINA
 DEPARTMENT OF TRANSPORTATION
 RALEIGH

SUBSTRUCTURE
 END BENT 1
 (STAGE 1 & 2)



REVISIONS						SHEET NO.
NO.	BY:	DATE:	NO.	BY:	DATE:	
1			3			TOTAL SHEETS
2			4			44

DRAWN BY: H. A. LOCKLEAR DATE: 03/1/02
 CHECKED BY: D. B. MOORE DATE: 3/26/02