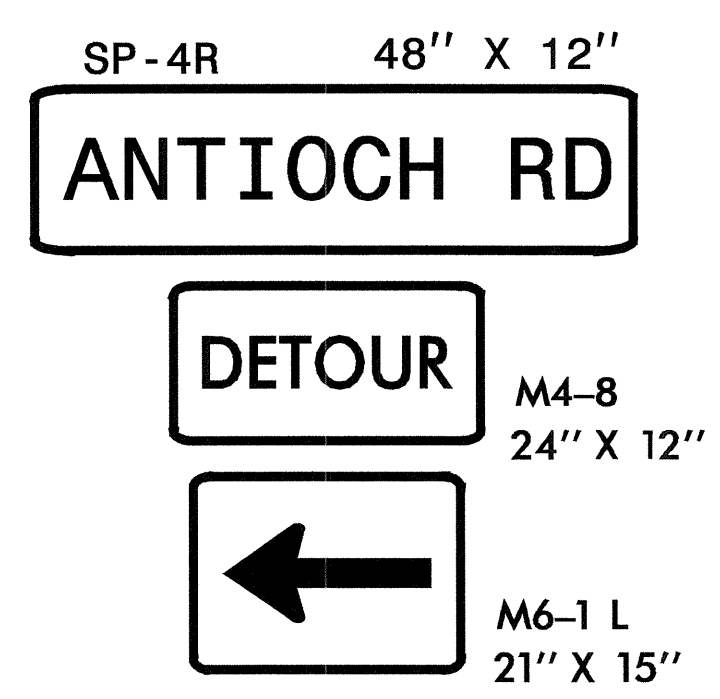


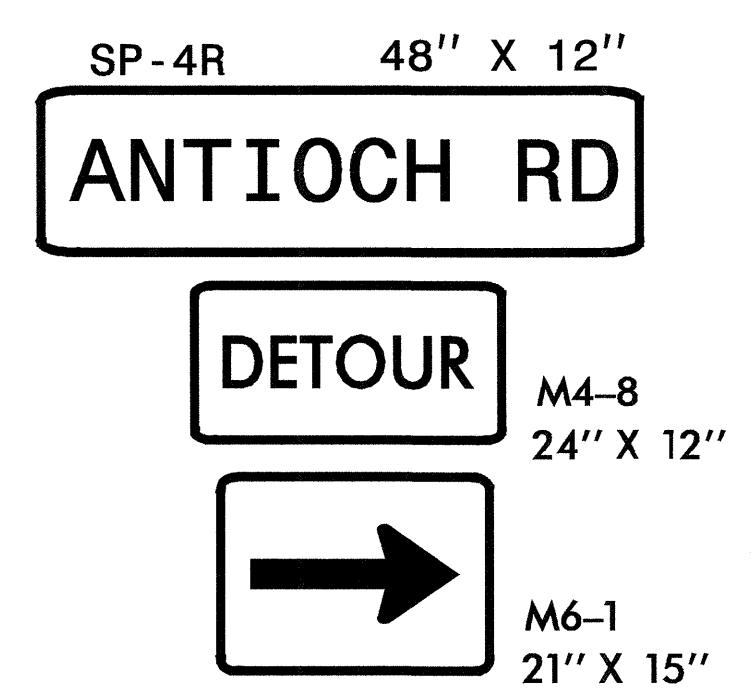
PHASING

PHASE I

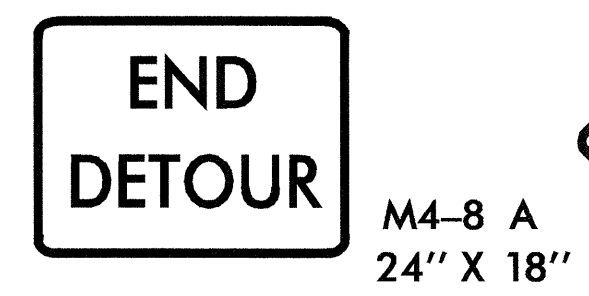
- STEP 1.**
 INSTALL OFFSITE DETOUR SIGNING AND TYPE III BARRICADES TO CLOSE SR 1223 TO THRU TRAFFIC FROM STA 13+20+/- TO STA 21+50+/- . (SEE TCP-2 & ROADWAY PLANS)
- STEP 2.**
 A. REMOVE THE EXISTING BRIDGE AND CONSTRUCT THE PROPOSED BRIDGE AND APPROACHES AS SHOWN ON THE ROADWAY PLAN.
 B. USING ROADWAY STANDARD DRAWINGS 1205.01, 1205.02 AND 1205.12, INSTALL PAVEMENT MARKINGS.
 C. REMOVE TYPE III BARRICADES, ALL WORK ZONE TRAFFIC CONTROL DETOUR SIGNING, AND REOPEN SR 1223.



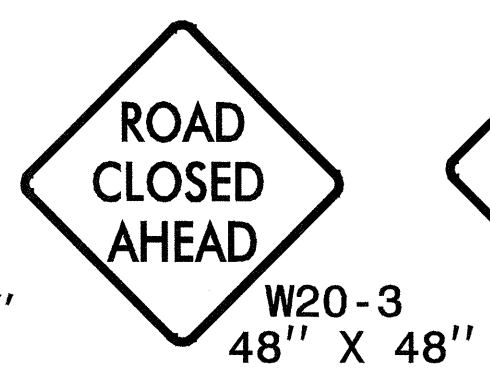
A



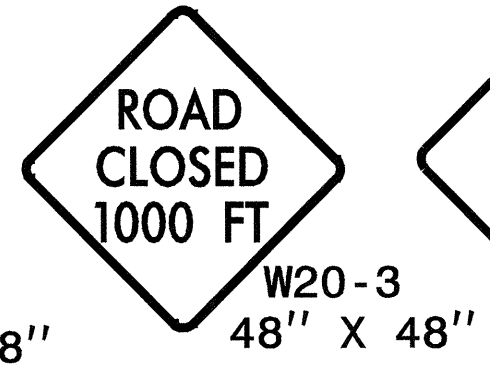
B



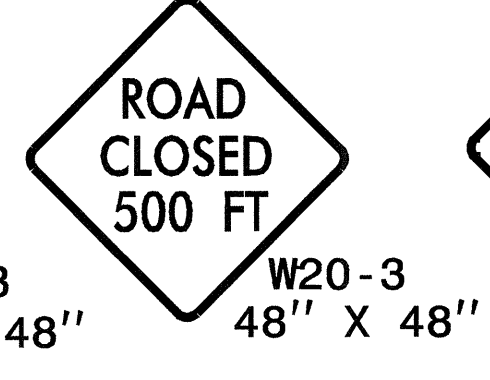
C



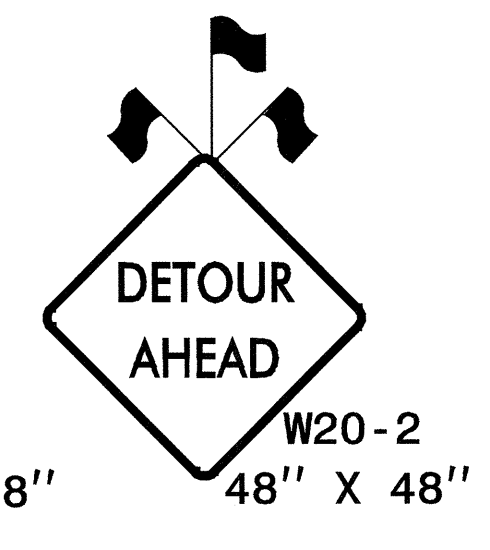
E



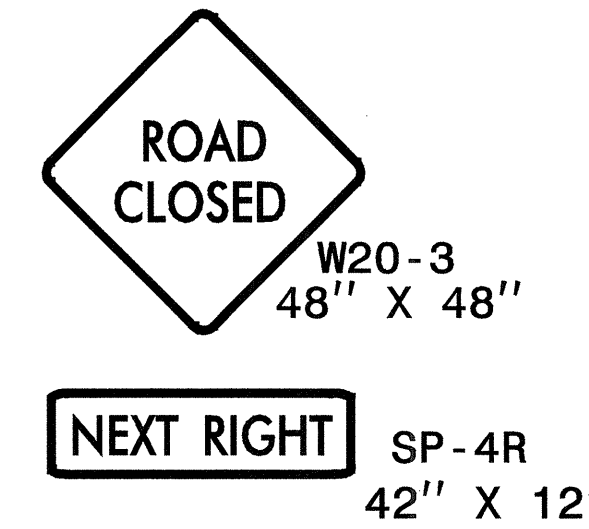
F



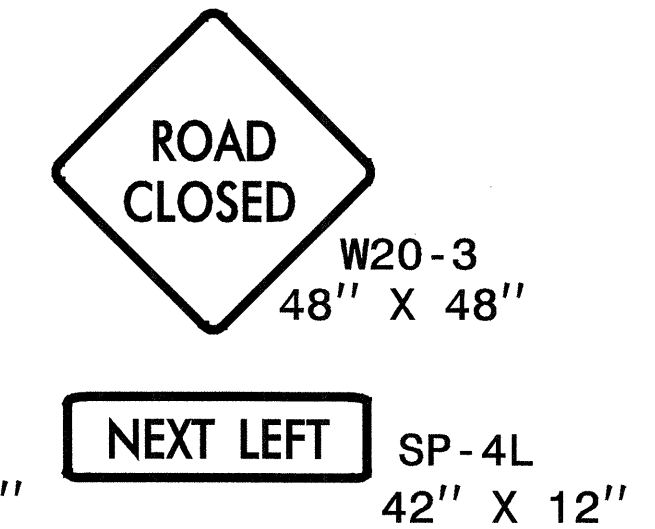
G



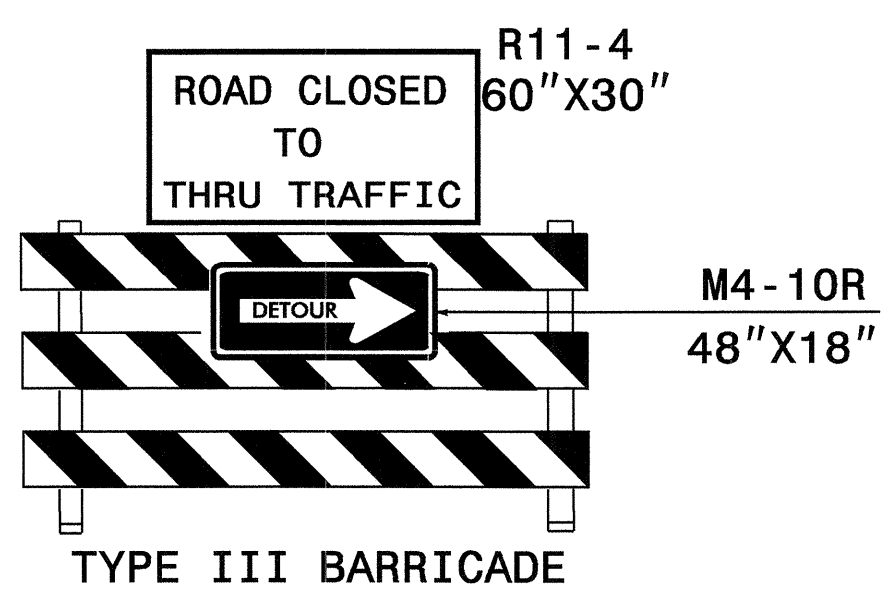
H



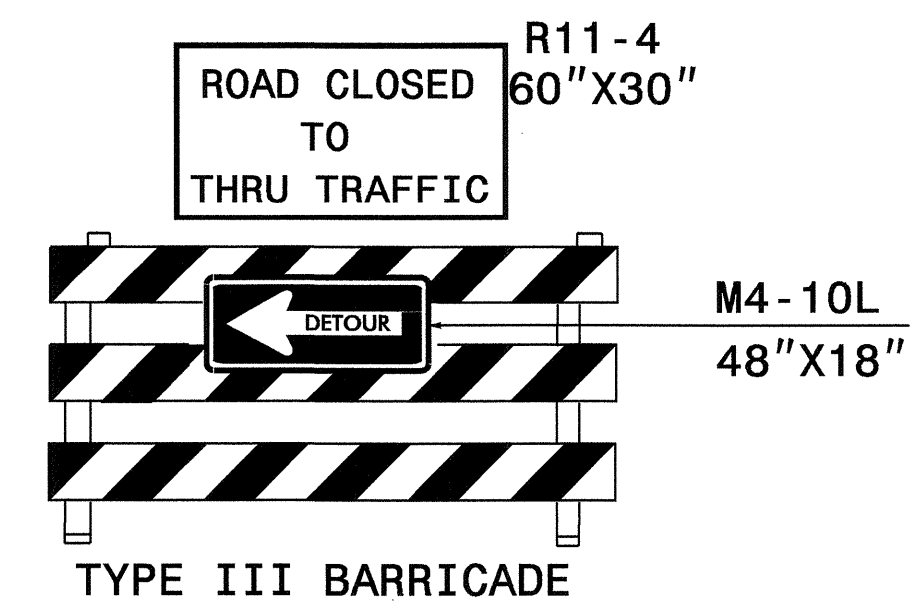
I



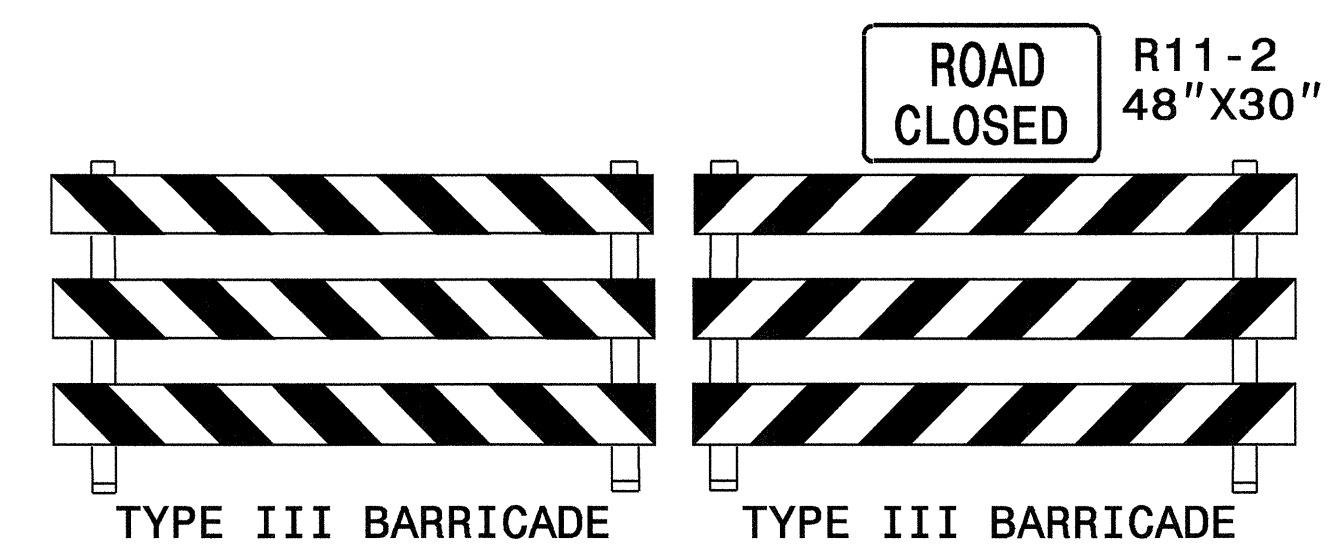
J



L



K



M

APPROVED: <i>Jessica D. Kuse</i> DATE: 11/16/05	OFFSITE DETOUR SIGNING	
	SCALE: NONE	
	DATE: 11/16/05	
	DWG. BY: WRH	
	DESIGN BY: WRH	
REVIEWED BY: JDK	REVISIONS	

03-JAN-2006 08:57
 \\E:\S-CG\SOS\053639\tr\afficoontr\top\b3639TCdetour_TCP2.dgn
 imgarrt\811 AT WZ1222291