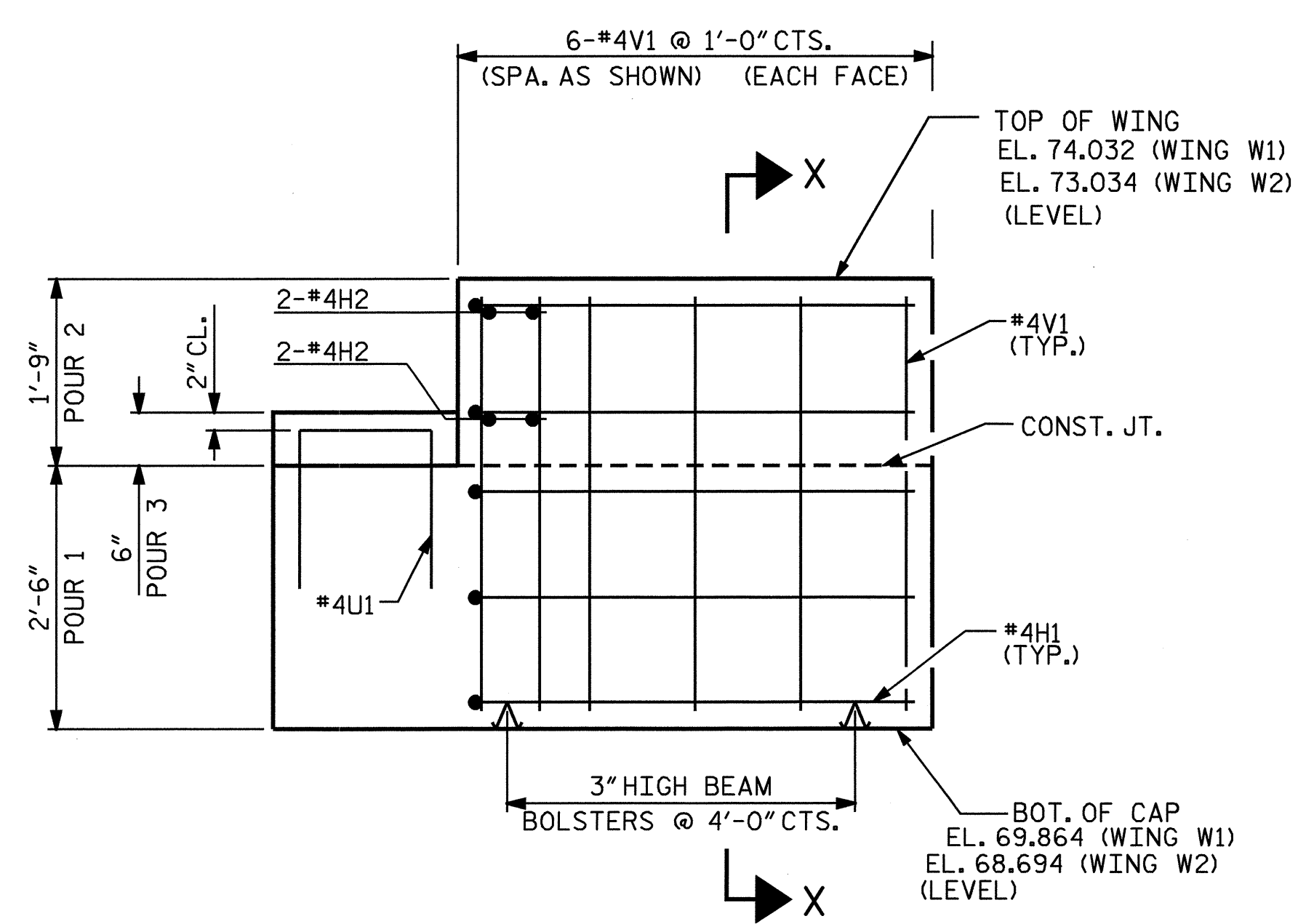
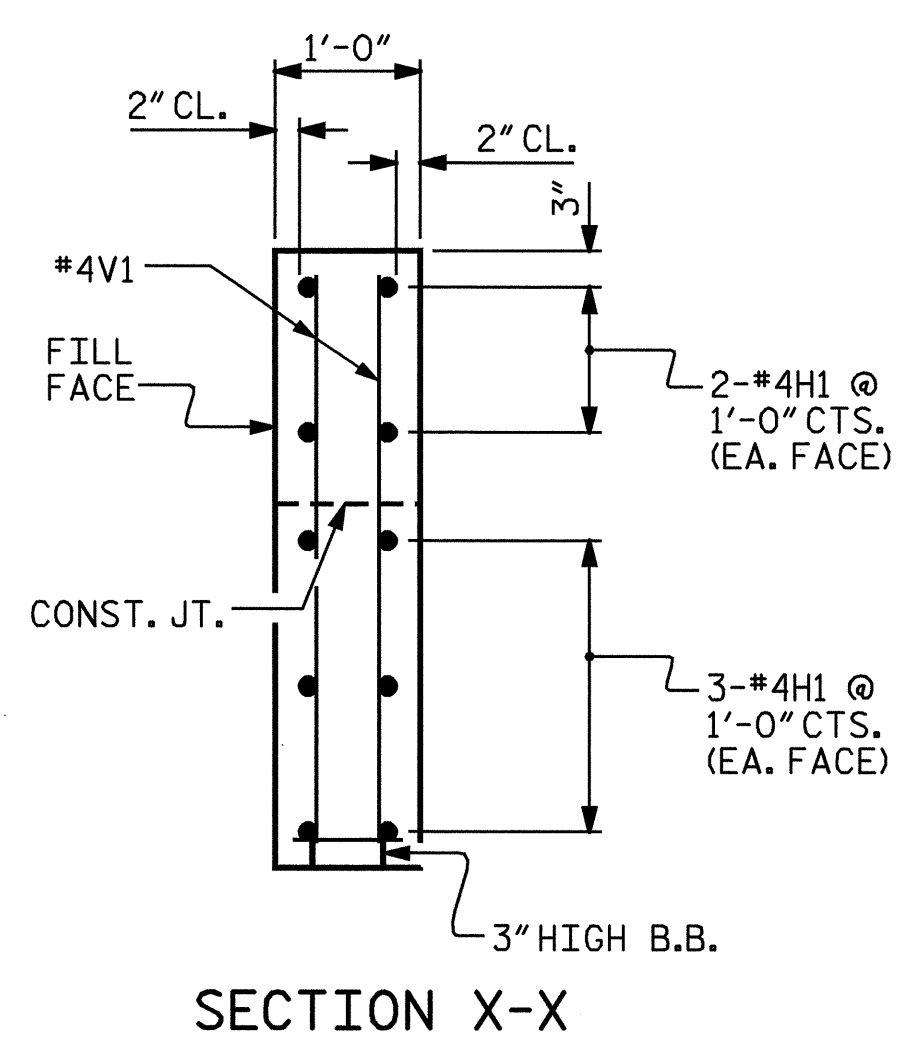


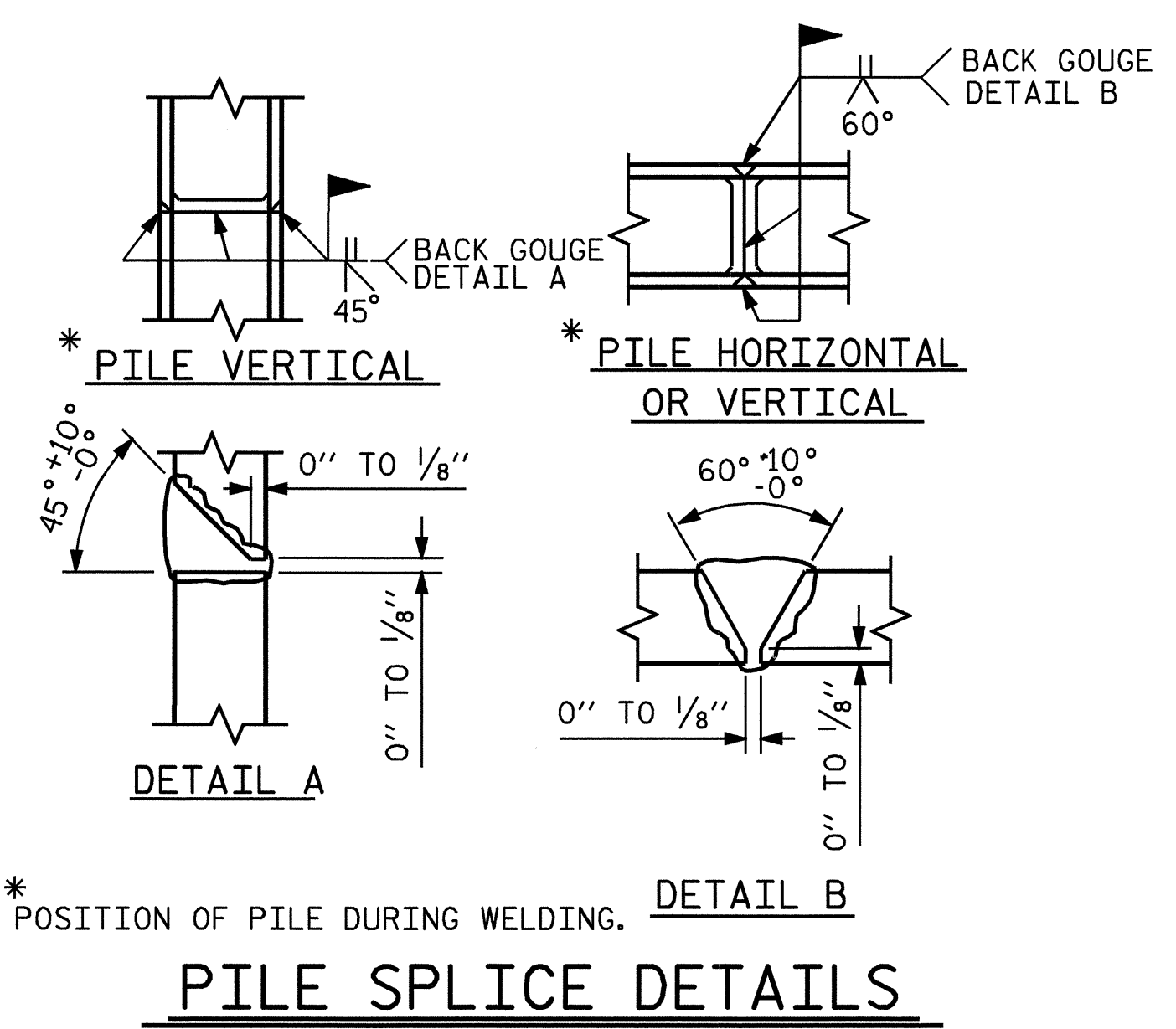
PLAN OF WING W1
WING W1 SHOWN, WING W2 SIMILAR



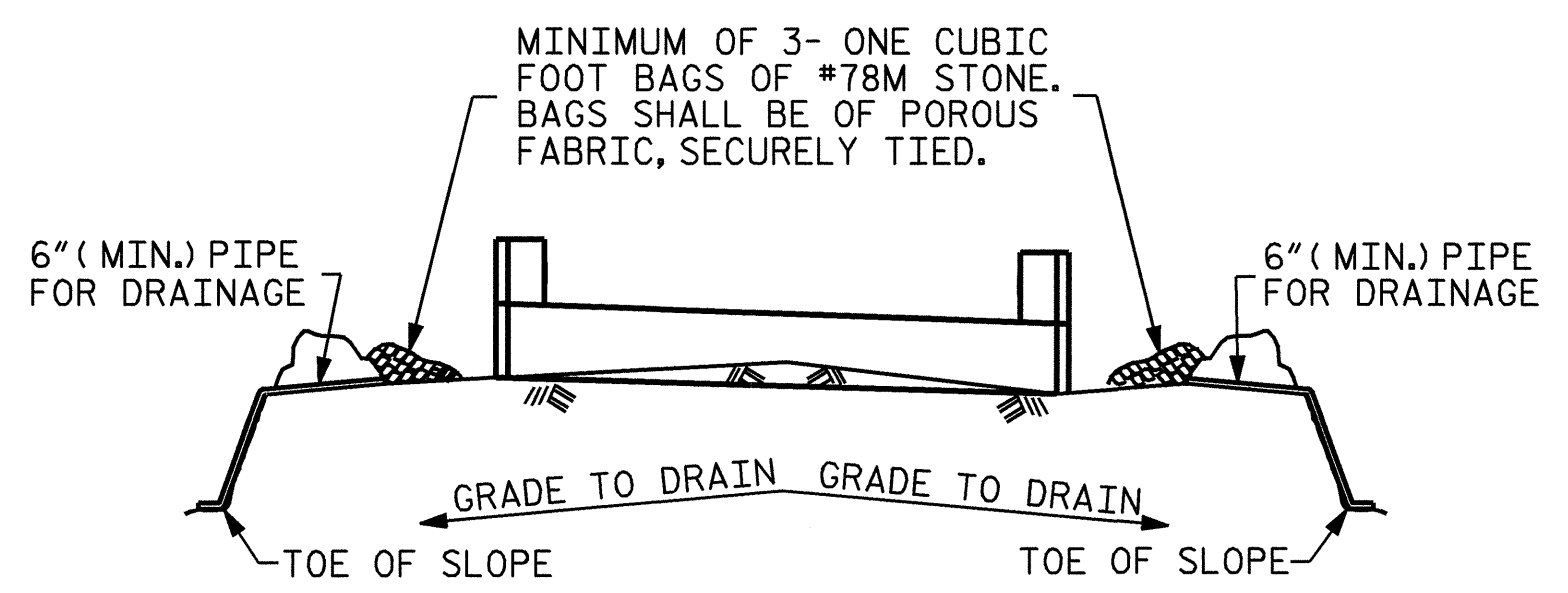
ELEVATION OF WING W1
WING W1 SHOWN, WING W2 SIMILAR



SECTION X-X



BAR TYPES		BILL OF MATERIAL	
HK. (1) 38'-8" 1'-3" 1'-3"	(2) 3'-11"	BAR NO.	SIZE TYPE LENGTH WEIGHT
(3) 2'-1 1/2" 2'-5"	(4) 2'-5" 4 1/2" 2'-5" 4 1/2"	B1	8 9 1 41'-2" 1120
(5) 1'-8" 1'-3" LAP	(6) 1'-5" 1'-6"	B2	2 5 STR 38'-8" 81
ALL BAR DIMENSIONS ARE OUT TO OUT.		B3	8 4 STR 20'-7" 110
		B4	10 4 STR 2'-5" 16
		D1	22 6 STR 1'-6" 50
		H1	20 4 2 4'-7" 61
		H2	8 4 STR 2'-6" 13
		S1	38 4 3 7'-5" 188
		S2	38 4 4 3'-2" 80
		S3	10 4 5 6'-6" 43
		U1	4 4 6 4'-5" 12
		V1	32 4 STR 3'-11" 84
		REINFORCING STEEL 1858 LBS.	
		CLASS A CONCRETE BREAKDOWN	
		POUR 1 - CAP AND LOWER PORTION OF WINGS 10.5 C.Y.	
		POUR 2 - UPPER PORTION OF WINGS 0.8 C.Y.	
		POUR 3 - LATERAL GUIDES 0.1 C.Y.	
		CLASS A CONCRETE TOTAL 11.4 C.Y.	
		HP 12 x 53 STEEL PILES	
		NO. 5 200 LIN. FEET	

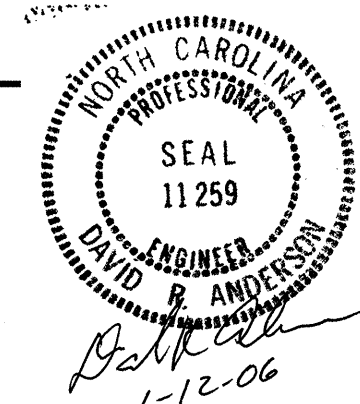


BAGGED STONE AND PIPE SHALL BE PLACED IMMEDIATELY AFTER COMPLETION OF END BENT EXCAVATION. PIPE MAY BE EITHER CONCRETE, CORRUGATED STEEL, CORRUGATED ALUMINUM ALLOY, OR CORRUGATED PLASTIC. PERFORATED PIPE WILL NOT BE ALLOWED.

BAGGED STONE SHALL REMAIN IN PLACE UNTIL THE ENGINEER DIRECTS THAT IT BE REMOVED. THE CONTRACTOR SHALL REMOVE AND DISPOSE OF SILT ACCUMULATIONS AT BAGGED STONE WHEN SO DIRECTED BY THE ENGINEER. BAGS SHALL BE REMOVED AND REPLACED WHENEVER THE ENGINEER DETERMINES THAT THEY HAVE DETERIORATED AND LOST THEIR EFFECTIVENESS.

NO SEPARATE PAYMENT WILL BE MADE FOR THIS WORK AND THE ENTIRE COST OF THIS WORK SHALL BE INCLUDED IN THE UNIT CONTRACT PRICE BID FOR THE SEVERAL PAY ITEMS.

TEMPORARY DRAINAGE AT END BENT



PROJECT NO. B-3639
EDGEcombe COUNTY
STATION: 17+59.40 -L-

SHEET 2 OF 2
STATE OF NORTH CAROLINA
DEPARTMENT OF TRANSPORTATION
RALEIGH
SUBSTRUCTURE
END BENT 1

REVISIONS				SHEET NO.	
NO.	BY:	DATE:	NO.	BY:	DATE:
1			3		
2			4		

TOTAL SHEETS 20