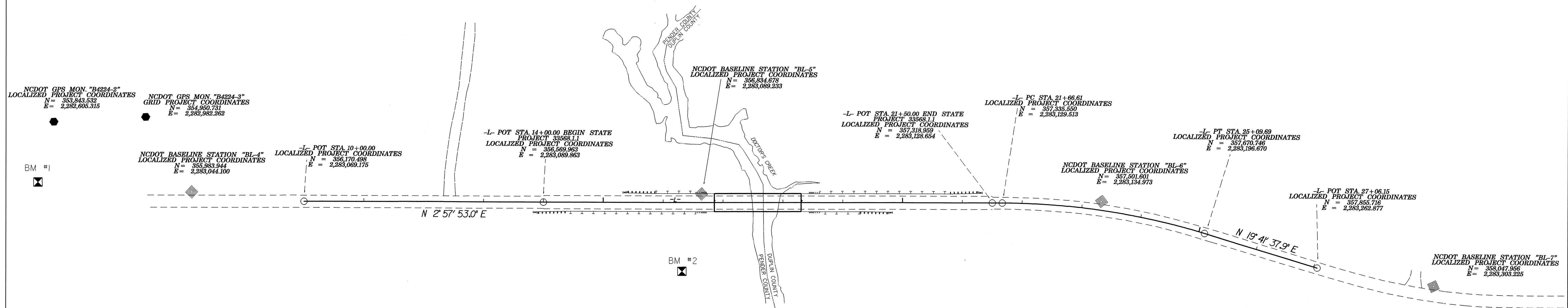
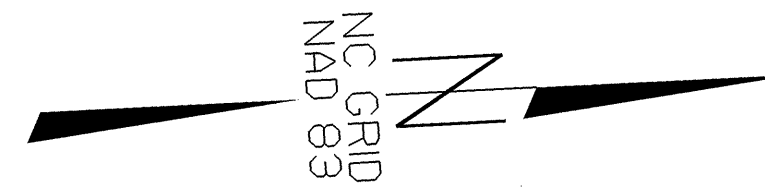


6/12/09

# SURVEY CONTROL SHEET

PROJECT REFERENCE NO.	SHEET NO.
B-4224	I-C
Location and Surveys	



### CONTROL DATA

BL- POINT	DESC.	NORTH	EAST	ELEVATION	L STATION	OFFSET
3	NCDOT GPS MON. 'B4224-3'	354950.7310	2282982.2620	62.14	OUTSIDE PROJECT LIMITS	
4	BL-4	353983.9440	2283044.1000	49.09	OUTSIDE PROJECT LIMITS	
5	BL-5	356834.6780	2283089.2330	40.62	16+64.33	14.32 LT
6	BL-6	357501.6010	2283134.9730	40.54	23+31.20	14.79 LT
7	BL-7	358047.9560	2283303.2250	40.67	OUTSIDE PROJECT LIMITS	

### BENCHMARK DATA

.....  
 BM1 ELEVATION = 59.16  
 N 355652 E 2282993  
 L STATION 10+00  
 S 8° 23' 47.8" W DIST 523.71  
 RR SPIKE SET IN POWER POLE  
 .....

.....  
 BM2 ELEVATION = 34.00  
 N 356795 E 2283216  
 L STATION 16+32 114 RIGHT  
 RR SPIKE SET IN 17' MAPLE  
 .....

.....  
 BM3 ELEVATION = 44.18  
 N 358291 E 2283381  
 L STATION 27+06  
 N 15° 08' 16.9" E DIST 450.41  
 RR SPIKE SET IN 20' PINE  
 .....

### DATUM DESCRIPTION

THE LOCALIZED COORDINATE SYSTEM DEVELOPED FOR THIS PROJECT IS BASED ON THE STATE PLANE COORDINATES ESTABLISHED BY NCDOT FOR MONUMENT "B-4224-3" WITH NAD 83 STATE PLANE GRID COORDINATES OF NORTHING: 354950.731(E) EASTING: 2282982.262(F) THE AVERAGE COMBINED GRID FACTOR USED ON THIS PROJECT (GROUND TO GRID) IS: 0.999917 THE N.C. LAMBERT GRID BEARING AND LOCALIZED HORIZONTAL GROUND DISTANCE FROM "B-4224-3" TO -L- STATION 14+00.00 IS N 03° 48' 07" E 1,622.80' ALL LINEAR DIMENSIONS ARE LOCALIZED HORIZONTAL DISTANCES VERTICAL DATUM USED IS NAVD 88

### NOTES:

THE CONTROL DATA FOR THIS PROJECT CAN BE FOUND ELECTRONICALLY BY SELECTING PROJECT CONTROL DATA AT:

HTTP://WWW.DOH.DOT.STATE.NC.US/PRECONSTRUCT/HIGHWAY/LOCATION/PROJECT  
 FILE NAME: b4224\_ls\_control\_050110.txt

SITE CALIBRATION INFORMATION HAS NOT BEEN PROVIDED FOR THIS PROJECT. IF FURTHER INFORMATION IS NEEDED, PLEASE CONTACT THE LOCATION AND SURVEYS UNIT.

● INDICATES GEODETIC CONTROL MONUMENTS USED OR SET FOR HORIZONTAL PROJECT CONTROL BY THE NCDOT LOCATION AND SURVEYS UNIT.

PROJECT CONTROL ESTABLISHED USING GLOBAL POSITIONING SYSTEM. NETWORK ESTABLISHED FROM EXISTING HARN MONUMENTS NAD 83/95

NOTE: DRAWING NOT TO SCALE

16-DEC-2005 07:16 b4224\_ls\_1c.dgn