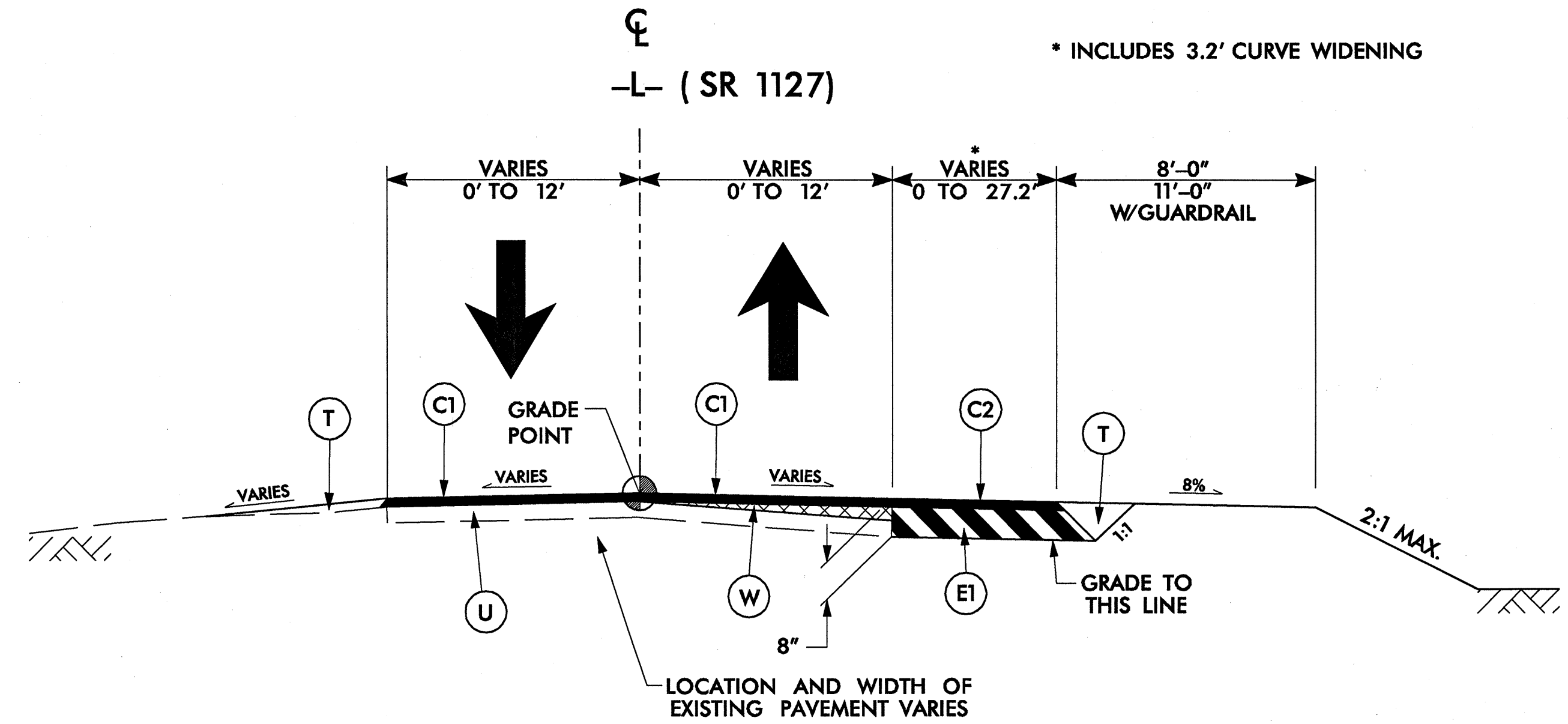
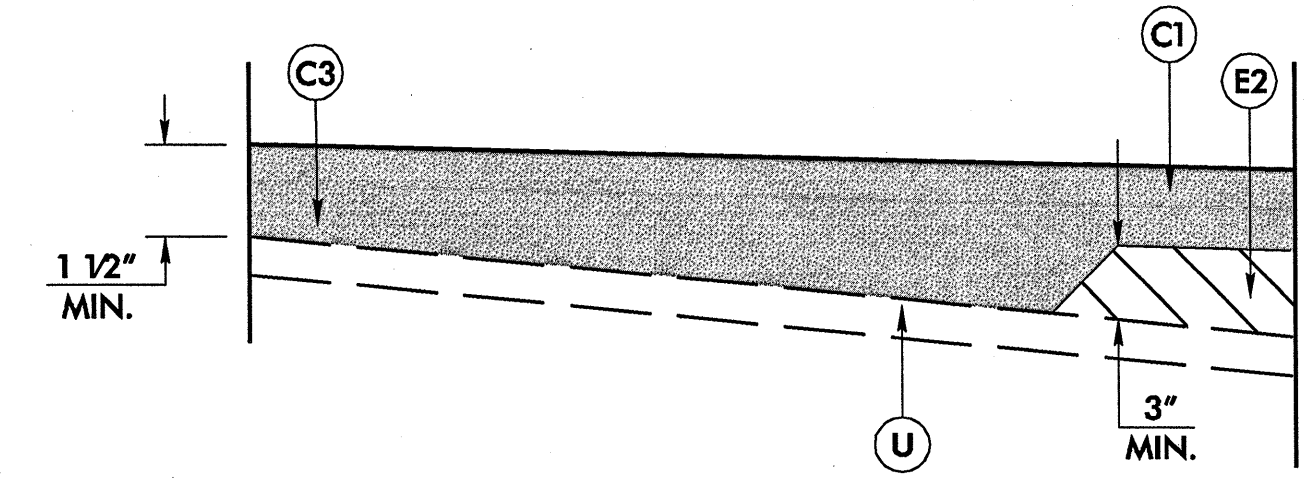


6/2/99



TRANSITION FROM EXIST. TO TS NO. 1
 FROM 10+00.00 TO STA. 10+50.00
 FROM 18+50.00 TO STA. 19+00.00
 USE TYPICAL SECTION NO. 1
 -L- STA. 10+50.00 TO STA. 12+72.08
 -L- STA. 16+23.41 TO STA. 18+50.00

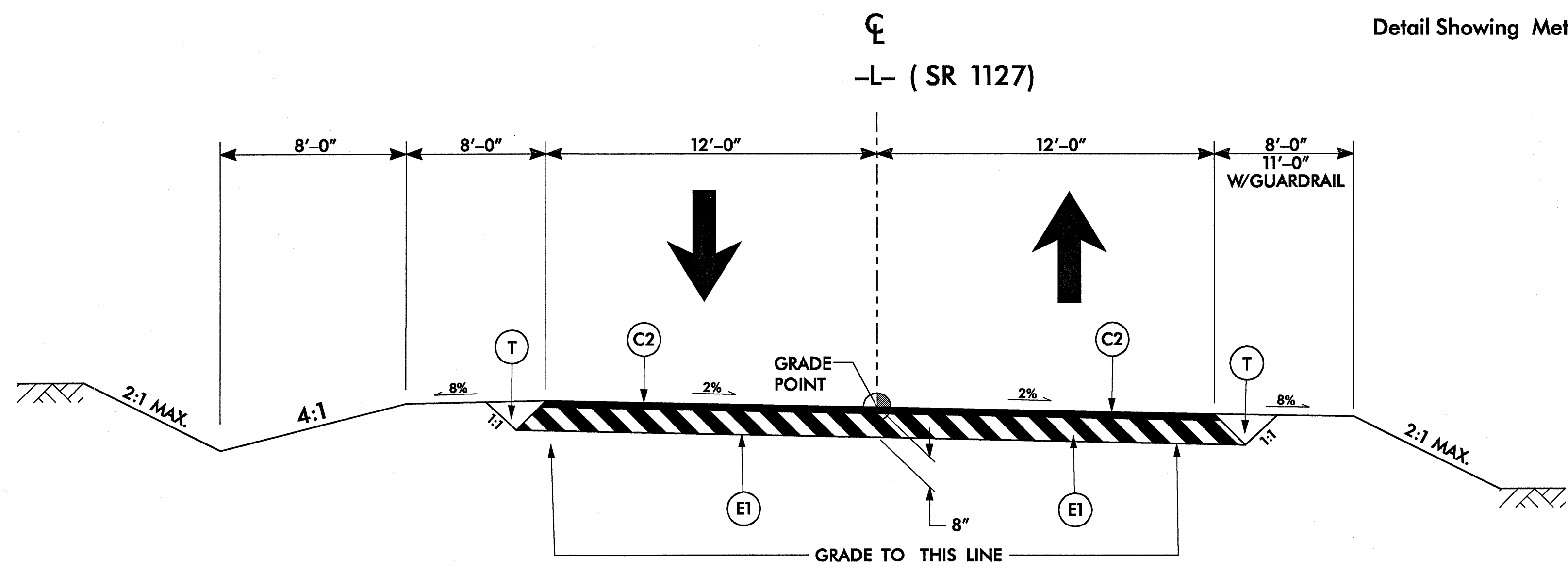
TYPICAL SECTION NO. 1



Detail Showing Method of Wedging

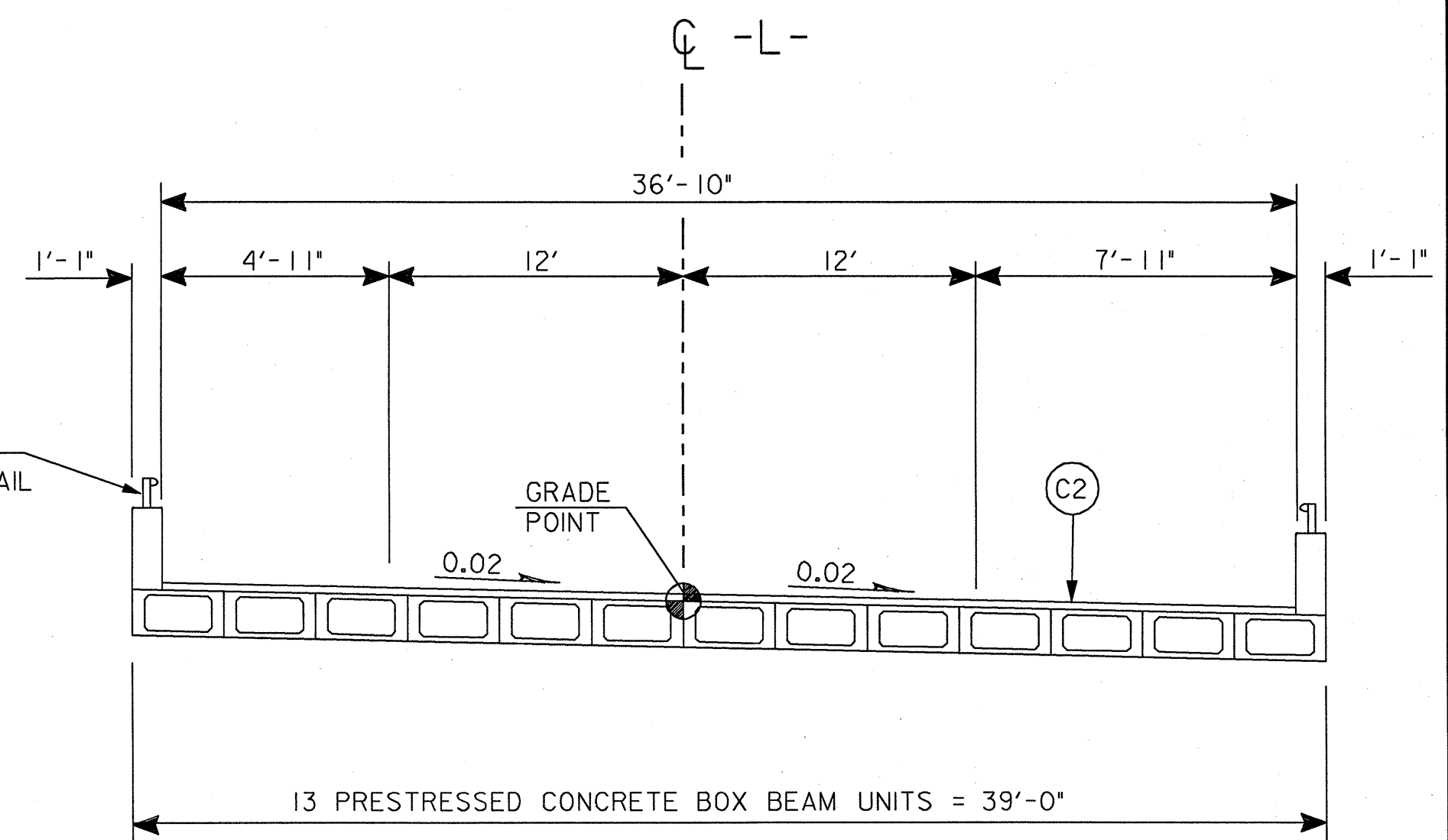
PAVEMENT SCHEDULE	
C1	PROP. APPROX. 1 1/4" ASPHALT CONCRETE SURFACE COURSE, TYPE SF9.5A, AT AN AVERAGE RATE OF 137.5 LBS. PER SQ. YD. IN ONE LAYER.
C2	PROP. APPROX. 2 1/2" ASPHALT CONCRETE SURFACE COURSE, TYPE SF9.5A, AT AN AVERAGE RATE OF 137.5 LBS. PER SQ. YD. IN EACH OF TWO LAYERS.
C3	PROP. VAR. DEPTH ASPHALT CONCRETE SURFACE COURSE, TYPE SF9.5A, AT AN AVERAGE RATE OF 110 LBS. PER SQ. YD. PER 1" DEPTH TO PLACED IN LAYERS NOT TO EXCEED 1 1/2" IN DEPTH.
E1	PROP. APPROX. 5 1/2" ASPHALT CONCRETE BASE COURSE, TYPE B25.0B, AT AN AVERAGE RATE OF 627 LBS. PER SQ. YD.
E2	PROP. VAR. DEPTH ASPHALT CONCRETE BASE COURSE, TYPE B25.0B, AT AN AVERAGE RATE OF 114 LBS. PER SQ. YD. PER 1" DEPTH TO PLACED IN LAYERS NOT LESS THAN 3" IN DEPTH OR GREATER THAN 5 1/2" IN DEPTH.
T	EARTH MATERIAL.
U	EXISTING PAVEMENT.
W	VARIABLE DEPTH ASPHALT PAVEMENT (SEE WEDGING DETAIL THIS SHEET)

NOTE: PAVEMENT EDGE SLOPES ARE 1:1 UNLESS SHOWN OTHERWISE.



USE TYPICAL SECTION NO. 2
 -L- STA. 12+72.08 TO STA. 13+52.00 (BEGIN BRIDGE)
 -L- STA. 14+72.00 (END BRIDGE) TO STA. 16+23.41

TYPICAL SECTION NO. 2



STRUCTURE DETAIL

NOTE: EXTRA SHOULDER WIDTH DUE TO HYDRAULIC REQUIREMENTS